

- County Clerk
- Interested Parties

**COUNTY OF LAKE  
NOTICE OF INTENT  
TO ADOPT A MITIGATED NEGATIVE DECLARATION**

**Project Title: Konocti Harbor Kids Camp Access Road;** Grading Complex (GR 19-1772);  
Lot Line Adjustment (LLA 20-03); Initial Study (IS 19-69)

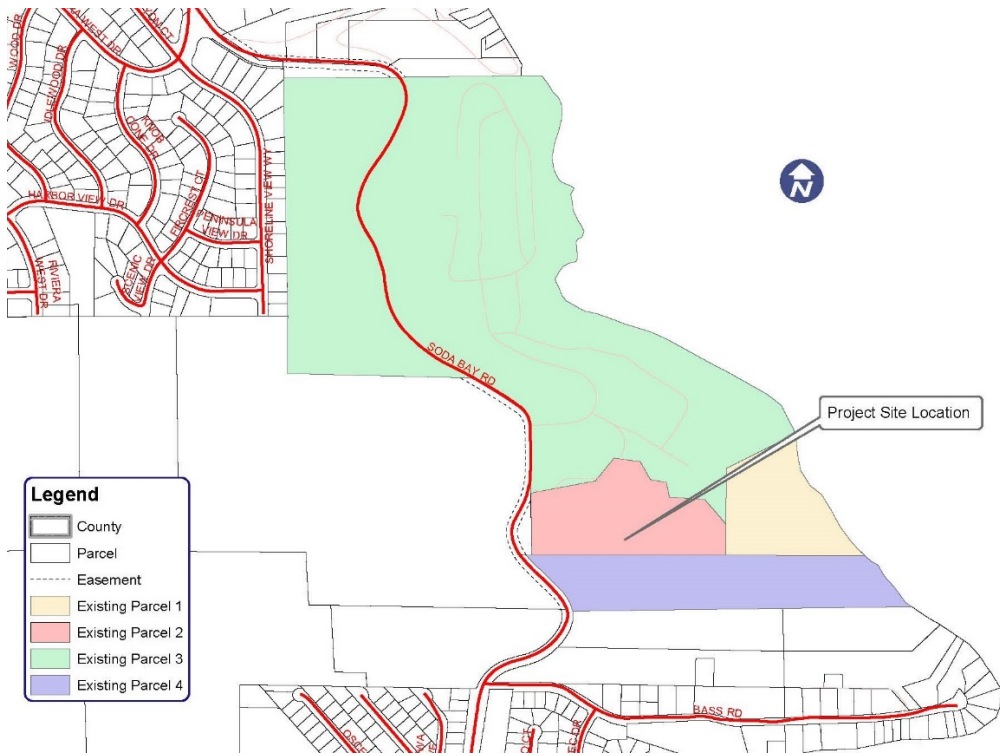
**Project Location:** 8800 & 8810 Soda Bay Road, Kelseyville, CA 95451

**APN No.:**

**009-002-25 and 009-010-01** (associated APNs: 009-002-36, 009-002-35, 009-002-34,  
009-002-33, 009-002-29, 009-002-14, and 009-011-01)

**Project Description:** The applicant is processing a lot line adjustment [with associated parcels] concurrently with a complex grading that will require an environmental analysis due to the amount of earth movement for the proposed project taking place between 8800 & 8810 Soda Bay Road, Kelseyville, CA. The lot line adjustment is a ministerial act and will be subjected to some degree of an environmental analysis in the initial study. The proposed project consists of an exclusive legal access road from Soda Bay Road to a specific destination, the Konocti Harbor Kids Camp. The project will include demolition of fence line, concrete drainage ditches, irrigation system and removal of several trees. New road improvements will include 20' wide paved access road with 1' shoulders, underground utilities, rock retaining walls, concrete pour in place retaining walls, and stormwater infrastructure.

**The public review period for the respective proposed Mitigated Negative Declaration based on Initial Study IS 19-69 will begin on December 30, 2020 and end on February 2, 2021.** You are encouraged to submit written comments regarding the proposed Mitigated Negative Declaration. You may do so by submitting written comments to the Planning Division prior to the end of the review period. Copies of the application, environmental documents, and all reference documents associated with the project are available for review through the **Community Development Department, Planning Division; telephone (707) 263-2221**. Written comments may be submitted to the Planning Division or via email at [sateur.ham@lakecountycalifornia.gov](mailto:sateur.ham@lakecountycalifornia.gov).



Vicinity Map of Konocti Harbor Kids Camp Road Access