

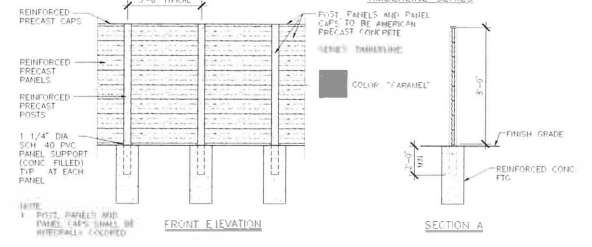
Revised SITE PLAN

Application # **PA 1900284**

Received By TRM On 2 Oct 2020



AMERICAN PRECAST CONCRETE TIMBERLINE SERIES



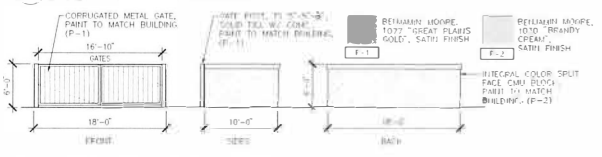
SITE LEGEND

- NEW CONCRETE SIDEWALK/PARKING
- NEW LIGHTCAFE
- NEW BUILT WALL

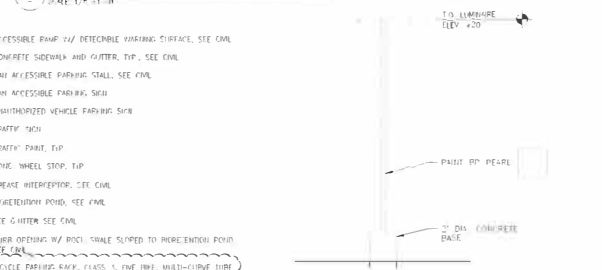
KEYED NOTES

- 1 PROPERTY LINE
- 2 (E) 15 FEET PUBLIC UTILITY EASEMENT TO REMAIN
- 3 (E) STORM DRAIN TO REMAIN
- 4 (E) FENCE TO REMAIN
- 5 (E) UN-GRAVING UTILITY BOX TO REMAIN
- 6 (E) UN-GRAVING WATER METER TO REMAIN
- 7 (E) UTILITY POLE TO REMAIN
- 8 (E) TRAFFIC LIGHT TO REMAIN
- 9 (E) TRAFFIC SIGNAL TO REMAIN, ADJUST LOCATION AS REQUIRED TO AVOID PEDESTRIAN PATH OF TRAVEL
- 10 (E) FIRE HYDRANT TO BE RELOCATED SOUTH OF (10) DRIVEWAY. SEE CIVIL
- 11 8 FEET HIGH PRECAST CONCRETE WALL. SEE 02/02
- 12 ACCESSIBLE DRIVE
- 13 SOLID FUEL SIGN (NO OTHERS). SEE 02/07
- 14 LINE OF FIRE LAMPY. SEE 01, 02, 03, W/10/07
- 15 LINE OF SOLAR READY ZONE ABOVE FUEL CANOPY
- 16 FUEL PUMP W/ ORIGINAL CURB ISLAND. TOP OF 6" SLOPE SLAB TO REMAIN. SEE CIVIL
- 17 UNDERGROUND FUEL TANKS
- 18 FUEL VENT RIVER PIPES AND CLEAN AIR SEPARATOR TANK. PAINT BP PEARL
- 19 NEW GRATING PROGRAM BANK AND EXPANDED ON ZONE PAD W/ 1/4" 4" BOLD-DIAMETER TIEBARS WITH CURB. PAINT BP PEARL
- 20 SOLID PNEUMATIC CYLINDER STORAGE CAGE. MOUNT TO CURB.
- 21 TRASH ENCLOSURE W/ CONC. FAD & APRON. SEE 02/02
- 22 GAS METER
- 23 MAIN ELECTRICAL SWITCHGEAR ON CONC. PAD
- 24 TRANSFORMER ON CONC. PAD
- 25 ACCESSIBLE AIR/WATER DENSIFIER. W/ HAF

PRECAST CONCRETE WALL

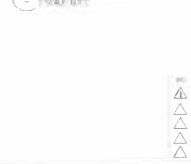


TRASH ENCLOSURE ELEVATIONS



- 27 ACCESSIBLE RAMP W/ DETECTABLE WARNING SURFACE. SEE CIVIL
- 28 CONCRETE SIDEWALK AND CUTTER. TOP. SEE CIVIL
- 29 VAN ACCESSIBLE PARKING STALL. SEE CIVIL
- 30 VAN ACCESSIBLE PARKING SIGN
- 31 UNAUTHORIZED VEHICLE PARKING SIGN
- 32 TRAFFIC SIGN
- 33 TRAFFIC PANEL. EIP
- 34 CURB WHEEL STOP. TOP
- 35 ASPHALT INTERSECTOR. SEE CIVIL
- 36 BIURELATION POINT. SEE CIVIL
- 37 VEE G LITER. SEE CIVIL
- 38 CURB OPENING W/ ROCK SHALE SLOPED TO INCREENTION POINT. SEE CIVIL
- 39 TRUCK PARKING BAY. CLASS 1. ONE (1) ONE MULTI-CURVE TURN PATH (LOWER CURVE). LCC MODEL. BRIDGE-G-0000 (PREPARED BY CIVIL). CALIFORNIA
- 40 BI-CYCLE PARKING LOCKER (PALMER G-BIKE). LCC MODEL. BRIDGE-G-0000 (PREPARED BY CIVIL). CALIFORNIA
- 41 UNDERGROUND CANVIAL INTERCEPT. SEE CIVIL
- 42 4" RANXED FRAMING/BLIND CLAD WITH 45 DEGREE REVEAL/ VISIBLE CURB. SEE CIVIL
- 43 FENCE/ DRAIN TILE. SEE CIVIL
- 44 BUBBLER FOR BIORETENTION POND. SEE CIVIL
- 45 BACK FLOW PREVENTERS. SEE CIVIL

SITE LIGHT POLE



PARKING COUNT	
ARCO GAS STATION (4 SPACES PER 1000 S.F.) X 2900 (0.67 SPACE PER 1 EMPLOYEE) X 2 EMPLOYEES TOTAL PARKING REQUIRED	12 SPACES - SPACES 14 SPACES
RESTAURANT (4 SPACES PER 1000 S.F.) X 900 (0.67 SPACE PER 1 EMPLOYEE) X 2 EMPLOYEES TOTAL PARKING REQUIRED	5 SPACES 2 SPACES 7 SPACES
PARKING PROVIDED	
VAN ACCESSIBLE PARKING (12' X 20')	1 SPACE
STANDARD PARKING (8' X 20')	8 SPACES
PARKING UNDER FUEL CANOPY	12 SPACES
TOTAL - 22 PARKING SPACES (ON SITE)	
1 SHORT TERM IN-VOLE PARKING	
1 LONG TERM IN-VOLE PARKING	



ARCO 75'

FIRST PART WIDTH :8.50	LOCK TO LOCK TIME :6.0
TRAILER WIDTH :8.50	STEERING ANGLE :36.0
FIRST PART TRACK :8.50	ARTICULATING ANGLE :70.0



701 UNIVERSITY AVE., STE 210
SACRAMENTO, CA 95825
916.231.0881

SITE PLAN & DETAILS

ARCO ampm

4010 E Fremont St. (Hwy 26) @ N Oro Ave.
Stockton, California

A2

September 22, 2020
PROJECT NO. 19131.0