

Appendix L

Arborist Report



One San Pedro Specific Plan Project

Arborist Report

prepared for

Housing Authority of the City of Los Angeles
2600 Wilshire Boulevard
Los Angeles, California 90057
Contact: Zoe Kranemann, Development Officer

prepared by

Rincon Consultants, Inc.
250 East 1st Street, Suite 301
Los Angeles, California 90012

April 2023



RINCON CONSULTANTS, INC.

Environmental Scientists | Planners | Engineers

rinconconsultants.com

Rincon Consultants, Inc.

2023 *One San Pedro Specific Plan Project Arborist Report*. Rincon Project 20-09918.
April 2023.

Table of Contents

1	Summary.....	1
2	Introduction.....	2
2.1	Background.....	2
2.2	Assignment.....	2
	Limits of Assignment.....	2
2.3	Purpose and Use of this Report.....	3
3	Observations.....	4
3.1	Site.....	4
3.2	Tree Survey Methodology.....	4
3.3	Protected Tree Results.....	6
3.4	Protected Tree Impacts.....	6
3.5	Conclusion.....	12
4	Assumptions and Limiting Conditions.....	20
5	Arborist Disclosure Statement.....	21
6	List of Preparers.....	22

Tables

Table 1	Overall Condition Rating Criteria.....	6
Table 2	Tree Impacts.....	7
Table 3	Protected Tree Removals and Tree Replacement Summary.....	13
Table 4	Street Tree Removals and City Tree Replacement Summary.....	13
Table 5	Non-Protected Significant Tree Removals and Tree Replacement Summary.....	14

Figures

Figure 1	Project Site and Location.....	5
----------	--------------------------------	---

Appendices

Appendix A	Protected Tree Matrix
Appendix B	Tree Photograph Log

This page intentionally left blank.

1 Summary

This Arborist Report was prepared by Registered Consulting Arborist Kelly Lewis at the request of the Housing Authority of the City of Los Angeles (HACLA) to support the One San Pedro Specific Plan project (project), located in the community of San Pedro in the city of Los Angeles, California. The proposed project includes redevelopment of its current 478 public housing complex. The project site is located at 275 West 1st Street and encompasses approximately nine city blocks between West Santa Cruz Street, North Palos Verdes Street, North Beacon Street, North Harbor Boulevard, West 1st Street, West 2nd Street, West 3rd Street, North Mesa Street, and North Centre Street. The Project site consists of approximately 20 acres, all of which are part of the redevelopment.

This report specifically addresses potential impacts to protected and non-protected significant trees from the site redevelopment. The project is anticipated to require demolition and grading of the entire site. There are 219 non-protected significant trees on site and one City of Los Angeles protected tree, coast live oak (*Quercus agrifolia*). The project is anticipated to require removal of all non-protected significant trees and the protected tree within the Project site. Protected trees require a permit from the City prior to removal.

2 Introduction

2.1 Background

The project is designed to provide up to 1,600 multi-family residential units and 85,000 square feet (sf) of services, amenities and administration uses, such as a health clinic, workforce development center, senior and childcare centers, and business incubator. In addition, there will be 45,000 sf of local-servicing commercial/retail uses including restaurants, grocery stores, pharmacies, and fitness studios. Architecturally, the project will be characterized by modern building materials with metal accents and a variety of textures. The residential areas of the project site will provide an innovative mixture of mid-rise and townhome-style buildings, encouraging street level interactions through stoops and ground floor patios. HACLA aims to focus on a unique and affordable living space that promotes the diversity of San Pedro's surrounding businesses, while keeping the positive impact towards the neighborhood at the forefront of its development and success. The project is anticipated to require demolition and grading of the entire site in three stages over the span of 14 years as part of the redevelopment process.

The City's Preservation of Protected Trees Ordinance (Protected Tree Ordinance) enshrined in Article 6, § 46.00 et seq. of the City's Municipal Code (Ordinance No. 177404) defines protected trees as any of the following southern California native tree species measuring 4 inches or more in cumulative diameter at 4.5 feet above the ground level at the base of the tree: Oak trees including valley oak (*Quercus lobata*), California live oak or coast live oak (*Quercus agrifolia*), or any of tree of the oak genus indigenous to California but excluding scrub oak (*Quercus dumosa*); southern California black walnut (*Juglans californica*); western sycamore (*Platanus racemosa*); and California bay (*Umbellularia californica*), and protected shrubs, including Mexican Elderberry (*Sambucus Mexicana*) and Toyon (*Heteromeles arbutifolia*). In accordance with the Protected Tree Ordinance, no person shall relocate or remove any protected tree without obtaining a permit from the City.

In addition, the City requires a permit for removal or cutting of any tree (regardless of size) in or upon any street or parkway in the city, per Section 62.171 of the Municipal Code. To apply for the permit, all City trees proposed for removal must be highlighted and color photos of each tree provided. Typically, an inventory of non-protected significant trees is required by the City Planning Department for development permits. A significant tree includes any non-protected tree with a cumulative trunk diameter of 8 inches or more.

2.2 Assignment

The assignment included surveying and mapping protected, significant and street trees on the property or that may be impacted by the project; identifying potential project impacts to trees; prescribing avoidance/minimization measures; and providing tree protection suggestions during construction activities. No protected shrubs were present within the project survey area and were not included in this report.

Limits of Assignment

The survey was limited to ground-level visual inspections of trees.

2.3 Purpose and Use of this Report

The purpose of this report is to document the health and condition of the 220 trees surveyed on and immediately adjacent to the project site and to identify which trees would be avoided, encroached upon, or removed based on the proposed site plan. This report is intended to be used by HACLA and upon submission will be the property of HACLA.

3 Observations

3.1 Site

The project is located on approximately 21 acres next to the Port of Los Angeles (Figure 1). The site is located within an existing affordable housing complex comprised of apartment buildings, landscaped areas, sidewalks, community gardens, and a park on the corner of 2nd Street and South Centre Street. The project site is located at 275 West 1st Street and encompasses approximately nine city blocks between West Santa Cruz Street, North Palos Verdes Street, North Beacon Street, North Harbor Boulevard, West 1st Street, West 2nd Street, West 3rd Street, North Mesa Street, and North Centre Street. Additionally, a community garden plot lies at the southeast corner of the intersection of South Palos Verdes Street and West 2nd Street. Small trees and fruit trees within this plot were not surveyed because they did not meet the size requirements designated by the City's Protected Tree Ordinance. All remaining trees that were surveyed are growing throughout the complex in landscaped areas and along the sidewalks.

3.2 Tree Survey Methodology

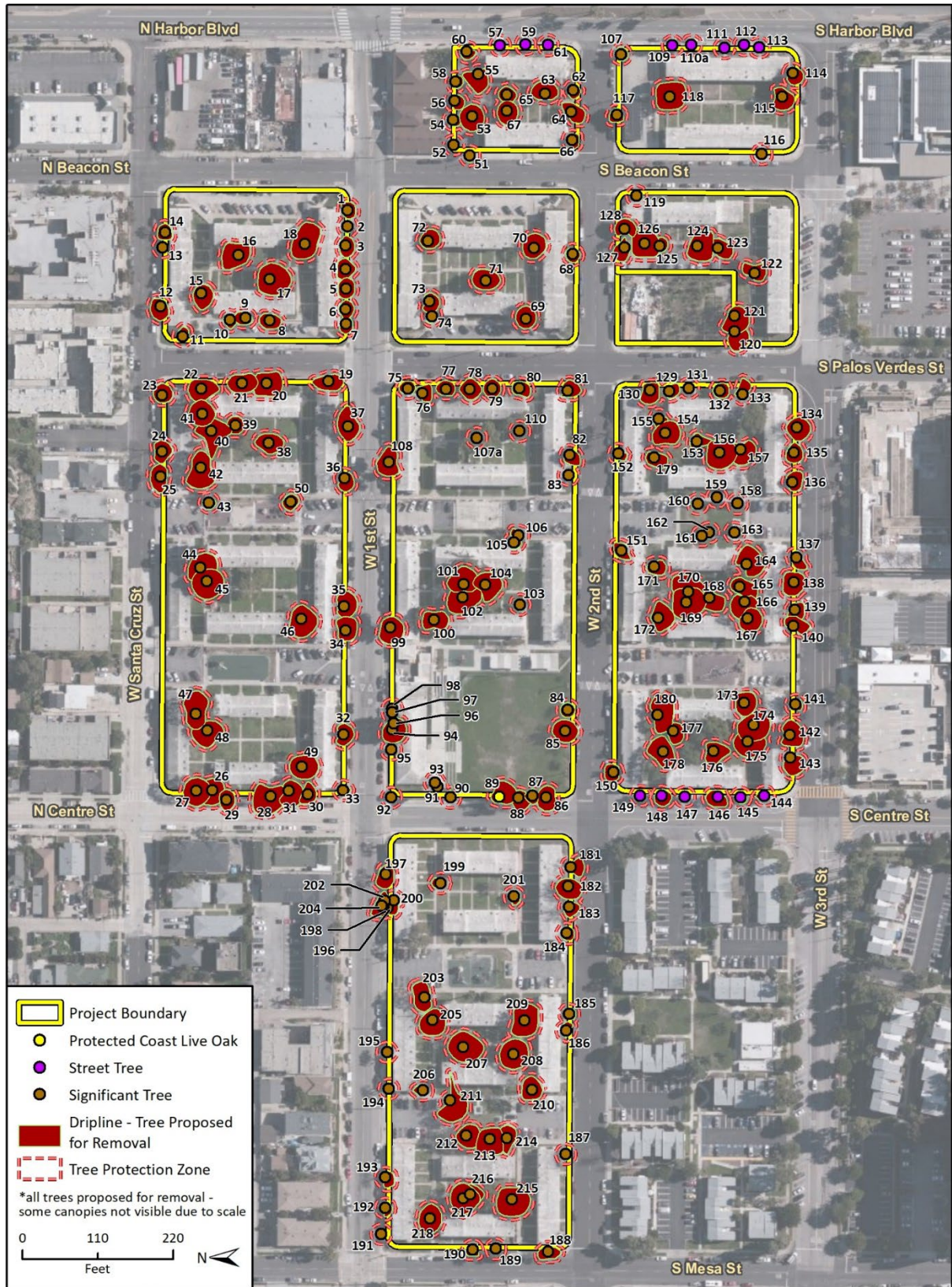
On August 3 and 4, 2021; American Society of Consulting Arborists (ASCA) Registered Consulting Arborist (RCA) Kelly Lewis and International Society of Arboriculture (ISA) Certified Arborists Yuling Huo and Genelle Watkins, and biologist Kaitlyn Weaver, surveyed for protected trees, street trees, and non-protected significant trees located on or immediately adjacent to the project site.

Tree locations were mapped using a Geode global positioning system (GPS) device with submeter accuracy. Trees that were inaccessible due to an active crime scene investigation during the survey were mapped by visually estimating the location of the tree from the nearest accessible location using aerial imagery. All trees were assigned a unique identification number and tagged with corresponding metal tag on the north-side of the trunk or most accessible side of the trunk, where feasible. Trees that were previously tagged were not retagged or assigned a new number, and City street trees were not tagged as the City does not permit the tagging of street trees with metal tags. An assessment of risks or hazardous conditions was not included as part of this survey.

For each tree, the arborist measured trunk diameter at breast height (DBH) at 4.5 feet above mean natural grade, estimated tree height, estimated crown spread in 8 cardinal directions, and conducted a general health assessment. Health condition, including evidence of disease, insect pests, structure, damage, and vigor, were considered to determine an overall condition rating using the criteria described in Appendix A-Tree Matrix, and summarized in Table 1 below. Photographs of each tree are included in Appendix B -Tree Photograph Log.

The RCA also confirmed that impacts to the protected tree on site would be significant based on the project site plan.

Figure 1 Project Site and Location



Imagery provided by Microsoft Bing and its licensors © 2021.

Fig X Arborist

Table 1 Overall Condition Rating Criteria

Rating	Structure
Excellent	Trunk is well developed with well attached limbs and branches. Good foliage cover and density, annual shoot growth above average. Excellent health, vigor and physical condition. No noticeable structural or aesthetic flaws. Well-balanced and ideal dendriform for species. Provides shading or wildlife habitat.
Good	Trunk is well developed with well attached limbs and branches; some flaws exist but are hardly visible. Good foliage cover and density, annual shoot growth above average. Provides shading or wildlife habitat and has minor aesthetic flaws.
Fair	Flaw in trunk, limb and branch development are minimal and are typical of this species and geographic region. Minimal visual damage from existing insect or disease, average foliage cover and annual growth.
Poor	Limbs or branches are poorly attached or developed. Canopy is not symmetrical. Trunk has lean. Branches or trunks have physical contact with the ground. May exhibit fire damage, responses to external encroachment/obstructions or existing insect/disease damage.
Dead	Trunk, limbs or branches have extensive visible decay or are broken. Canopy leaves are non-seasonally absent or uniformly brown throughout, with no evidence of new growth.

Impacts were categorized as no impact, minor, major, and removal based on the criteria below:

- Minor impacts generally include trees where encroachments into the tree protection zone (TPZ) would not compromise the health or structural integrity of the tree, and/or generally would encompass less than 20 percent of the TPZ.
- Major impact is one that may result in future decline or mortality of a tree, such as from grading, excavation, fill, soil compaction, or substantial branch removal, and/or would encroach 20 percent or more of the TPZ.
- No impact includes trees that would be completely avoided by construction activities and post-project conditions are not expected to negatively impact the tree.
- Removal includes trees that are located within the grading footprint or would be encroached significantly to the point where mortality would be expected.

3.3 Protected Tree Results

Of the 220 trees surveyed, 219 are non-protected significant trees (including 14 street trees) and one is a protected tree. The protected tree is a coast live oak in fair health growing in a landscaped park. Data collected for each tree is summarized in Appendix A—Protected Tree Matrix.

3.4 Protected Tree Impacts

All 220 trees surveyed are conservatively assumed to be removed for demolition and clearing/grading of the site. Table 2 below summarizes tree impacts. As shown in Figure 1, the tree data was overlaid onto the project boundary, and any trees located within the project boundary are considered removed. All trees are assumed to be impacted by project activities for the purposes of conservative analysis. Nonetheless, the applicant intends to preserve existing trees, where possible, by protecting them in place during proposed construction activities in accordance with the City of Los Angeles Tree Care Manual - Appendix G: Tree Protection Guidelines for Designers and Project Managers. Because construction conditions can be highly variable (e.g., due to equipment staging areas or tree health at the time of proposed development), preservation of existing trees on the site

cannot be predetermined. However, protection measures should consider staging of equipment, minimization of mechanical damage, compaction and root damages, and protective fencing when avoiding impacts to trees. In the project area, where existing trees cannot be preserved, they will be replaced at their respective replacement ratios.

Table 2 Tree Impacts

Tree ID Number	Species	Aggregate Trunk Diameter (inches)	Tree Height (feet)	Overall Health Rating	Proposed Impact Status	Proposed Impact Percentage
1	Gold medallion	8	20	Good	Removal	100%
2	Gold medallion	7	20	Good	Removal	100%
3	Gold medallion	9	20	Good	Removal	100%
4	Gold medallion	9	25	Good	Removal	100%
5	Gold medallion	8	20	Fair	Removal	100%
6	Gold medallion	8	20	Good	Removal	100%
7	Gold medallion	8	20	Good	Removal	100%
8	Mimosa	20.5	20	Good	Removal	100%
9	Mimosa	11	20	Fair	Removal	100%
10	Mimosa	8.5	15	Good	Removal	100%
11	Strawberry madrone	8	15	Poor	Removal	100%
12	Carob	27	35	Good	Removal	100%
13	Floss silk	9	15	Good	Removal	100%
14	Carob	25	35	Good	Removal	100%
15	Jacaranda	20	60	Fair	Removal	100%
16	Jacaranda	25	40	Good	Removal	100%
17	Jacaranda	25	60	Good	Removal	100%
18	Jacaranda	28	55	Fair	Removal	100%
19	Chinese elm	23	50	Fair	Removal	100%
20	Chinese elm	21.5	45	Fair	Removal	100%
21	Jacaranda	21	50	Good	Removal	100%
22	Brisbane box	25	40	Fair	Removal	100%
23	London plane	16	50	Good	Removal	100%
24	Brisbane box	22	60	Fair	Removal	100%
25	Jacaranda	21	55	Good	Removal	100%
26	Jacaranda	20.5	40	Good	Removal	100%
27	Chinese elm	26	50	Good	Removal	100%
28	Brisbane box	25	45	Good	Removal	100%
29	Jacaranda	11	30	Fair	Removal	100%
30	Chinese elm	19	35	Dead	Removal	100%
31	Jacaranda	20	50	Fair	Removal	100%
32	Brisbane box	20.5	35	Fair	Removal	100%
33	Mondell pine	11	15	Good	Removal	100%
34	Chinese elm	23	45	Good	Removal	100%
35	Chinese elm	20	40	Good	Removal	100%

Housing Authority of the City of Los Angeles
One San Pedro Specific Plan Project

Tree ID Number	Species	Aggregate Trunk Diameter (inches)	Tree Height (feet)	Overall Health Rating	Proposed Impact Status	Proposed Impact Percentage
36	Chinese elm	22	45	Poor	Removal	100%
37	Brisbane box	28	50	Good	Removal	100%
38	Jacaranda	25	45	Fair	Removal	100%
39	Olive	28	20	Poor	Removal	100%
40	Jacaranda	29	60	Good	Removal	100%
41	Jacaranda	22	40	Good	Removal	100%
42	Jacaranda	25.5	55	Fair	Removal	100%
43	Olive	22	16	Fair	Removal	100%
44	Jacaranda	30.5	60	Good	Removal	100%
45	Jacaranda	27	50	Good	Removal	100%
46	Jacaranda	31.5	35	Fair	Removal	100%
47	Jacaranda	36	50	Good	Removal	100%
48	Jacaranda	48	55	Fair	Removal	100%
49	Jacaranda	26	45	Fair	Removal	100%
50	Arizona ash	11	25	Good	Removal	100%
51	Carob	17	20	Good	Removal	100%
52	Carob	20	25	Good	Removal	100%
53	Chinese elm	17	40	Good	Removal	100%
54	Carob	15	25	Fair	Removal	100%
55	Chinese elm	17	40	Good	Removal	100%
56	Carob	19.5	35	Good	Removal	100%
57	Mexican fan palm	17	25	Good	Removal	100%
58	Carob	12.5	30	Poor	Removal	100%
59	Mexican fan palm	17	25	Good	Removal	100%
60	Carob	19.5	35	Poor	Removal	100%
61	Mexican fan palm	17	25	Fair	Removal	100%
62	Carob	23	35	Good	Removal	100%
63	Jacaranda	17	22	Good	Removal	100%
64	Carob	24	35	Fair	Removal	100%
65	Jacaranda	12	30	Fair	Removal	100%
66	Carob	26.5	40	Fair	Removal	100%
67	Jacaranda	16	25	Good	Removal	100%
68	Carob	23	35	Good	Removal	100%
69	Shamel ash	25	45	Good	Removal	100%
70	Jacaranda	24.5	50	Good	Removal	100%
71	Jacaranda	25	40	Fair	Removal	100%
72	Weeping fig	28	40	Good	Removal	100%
73	Jacaranda	22	45	Fair	Removal	100%
74	Southern magnolia	9	25	Poor	Removal	100%
75	Siberian elm	24	40	Fair	Removal	100%
76	Jacaranda	23.5	50	Fair	Removal	100%

Tree ID Number	Species	Aggregate Trunk Diameter (inches)	Tree Height (feet)	Overall Health Rating	Proposed Impact Status	Proposed Impact Percentage
77	Siberian elm	27	40	Fair	Removal	100%
78	Brisbane box	26	60	Good	Removal	100%
79	Weeping fig	27	50	Good	Removal	100%
80	Brisbane box	18.5	45	Fair	Removal	100%
81	Carob	28	35	Good	Removal	100%
82	Carob	41.5	40	Fair	Removal	100%
83	Carob	29	35	Poor	Removal	100%
84	London plane	11	30	Fair	Removal	100%
85	London plane	18	40	Fair	Removal	100%
86	London plane	21	55	Good	Removal	100%
87	London plane	12	35	Fair	Removal	100%
88	London plane	16.5	55	Fair	Removal	100%
89	Coast live oak	27	35	Fair	Removal	100%
90	Indian coral	24	20	Good	Removal	100%
91	Mexican fan palm	16	25	Good	Removal	100%
92	Pygmy date palm	41	15	Good	Removal	100%
93	Mexican fan palm	16	25	Good	Removal	100%
94	Jacaranda	23	60	Fair	Removal	100%
95	King palm	14	10	Good	Removal	100%
96	King palm	12.5	20	Good	Removal	100%
97	King palm	12	10	Good	Removal	100%
98	King palm	13.5	20	Good	Removal	100%
99	Brisbane box	27	45	Good	Removal	100%
100	Jacaranda	26	50	Fair	Removal	100%
101	Jacaranda	27	50	Fair	Removal	100%
102	Jacaranda	33	65	Good	Removal	100%
103	Umbrella tree	16	20	Fair	Removal	100%
104	Jacaranda	25	65	Fair	Removal	100%
105	Western Australia peppermint	10	15	Fair	Removal	100%
106	Western Australia peppermint	10	15	Poor	Removal	100%
107	Carob	21	25	Good	Removal	100%
107a ¹	Jacaranda	29	45	Good	Removal	100%
108	Brisbane box	25	50	Fair	Removal	100%
109	Mexican fan palm	17	25	Fair	Removal	100%
110	Jacaranda	15	55	Fair	Removal	100%
110a ¹	Mexican fan palm	21	25	Good	Removal	100%
111	Mexican fan palm	13	30	Fair	Removal	100%
112	Mexican fan palm	12	25	Fair	Removal	100%
113	Mexican fan palm	14	25	Fair	Removal	100%

Housing Authority of the City of Los Angeles
One San Pedro Specific Plan Project

Tree ID Number	Species	Aggregate Trunk Diameter (inches)	Tree Height (feet)	Overall Health Rating	Proposed Impact Status	Proposed Impact Percentage
114	Carrotwood	24.5	40	Good	Removal	100%
115	Jacaranda	21	30	Good	Removal	100%
116	Arizona ash	8	15	Good	Removal	100%
117	Carob	27	30	Fair	Removal	100%
118	Jacaranda	26	45	Good	Removal	100%
119	Carob	12	15	Good	Removal	100%
120	Chinese elm	20	45	Good	Removal	100%
121	Chinese elm	21	40	Good	Removal	100%
122	Jacaranda	19.5	35	Good	Removal	100%
123	Chinese elm	20	25	Fair	Removal	100%
124	Chinese elm	19	45	Good	Removal	100%
125	Jacaranda	11	15	Fair	Removal	100%
126	Chinese elm	17	45	Fair	Removal	100%
127	Chinese elm	13	20	Good	Removal	100%
128	Jacaranda	18.5	30	Fair	Removal	100%
129	Jacaranda	20	30	Good	Removal	100%
130	Jacaranda	21	50	Poor	Removal	100%
131	Siberian elm	17	17	Good	Removal	100%
132	Chinese elm	19	35	Fair	Removal	100%
133	Jacaranda	16	35	Fair	Removal	100%
134	Chinese elm	19	40	Good	Removal	100%
135	Brisbane box	18	35	Good	Removal	100%
136	Brisbane box	18.5	30	Good	Removal	100%
137	Chinese elm	22	40	Good	Removal	100%
138	Chinese elm	21	50	Good	Removal	100%
139	Chinese elm	20	35	Good	Removal	100%
140	Chinese elm	20	30	Poor	Removal	100%
141	Brisbane box	20	35	Good	Removal	100%
142	Brisbane box	29.5	55	Good	Removal	100%
143	Chinese elm	21	35	Good	Removal	100%
144	Carrotwood	21	30	Fair	Removal	100%
145	Carrotwood	16	20	Good	Removal	100%
146	Carrotwood	18.5	25	Poor	Removal	100%
147	Carrotwood	18	20	Poor	Removal	100%
148	Carrotwood	17	35	Good	Removal	100%
149	Carrotwood	19	20	Fair	Removal	100%
150	Mondell pine	12.5	30	Fair	Removal	100%
151	Brisbane box	20	35	Good	Removal	100%
152	Cook pine	14	45	Good	Removal	100%
153	Jacaranda	22	45	Fair	Removal	100%
154	Jacaranda	23.5	60	Good	Removal	100%

Tree ID Number	Species	Aggregate Trunk Diameter (inches)	Tree Height (feet)	Overall Health Rating	Proposed Impact Status	Proposed Impact Percentage
155	Jacaranda	20	40	Fair	Removal	100%
156	Jacaranda	23	60	Good	Removal	100%
157	Jacaranda	23	45	Good	Removal	100%
158	Mondell pine	10	25	Fair	Removal	100%
159	Mondell pine	10	15	Good	Removal	100%
160	Mondell pine	11.5	20	Fair	Removal	100%
161	Mondell pine	10	12	Good	Removal	100%
162	Mondell pine	10.5	20	Fair	Removal	100%
163	Mondell pine	10	15	Good	Removal	100%
164	Jacaranda	23	55	Good	Removal	100%
165	Jacaranda	23	40	Fair	Removal	100%
166	Jacaranda	17.5	55	Fair	Removal	100%
167	Jacaranda	24	40	Good	Removal	100%
168	Jacaranda	23.5	50	Good	Removal	100%
169	Jacaranda	24	60	Good	Removal	100%
170	Jacaranda	18	45	Poor	Removal	100%
171	Jacaranda	21	40	Fair	Removal	100%
172	Jacaranda	23.5	40	Fair	Removal	100%
173	Jacaranda	24	30	Good	Removal	100%
174	Jacaranda	26.5	60	Good	Removal	100%
175	Jacaranda	26	45	Good	Removal	100%
176	Jacaranda	18	40	Good	Removal	100%
177	Jacaranda	19	30	Fair	Removal	100%
178	Jacaranda	24.5	65	Good	Removal	100%
179	Jacaranda	24	40	Fair	Removal	100%
180	Jacaranda	25.5	50	Fair	Removal	100%
181	London plane	19	30	Fair	Removal	100%
182	London plane	22	55	Fair	Removal	100%
183	London plane	19	30	Fair	Removal	100%
184	London plane	12	35	Fair	Removal	100%
185	Gold medallion	8	20	Fair	Removal	100%
186	Brisbane box	16	30	Fair	Removal	100%
187	Carob	32	30	Fair	Removal	100%
188	Carob	38.5	35	Fair	Removal	100%
189	Carob	26	20	Poor	Removal	100%
190	Carrotwood	27.5	30	Good	Removal	100%
191	Arizona ash	12	20	Poor	Removal	100%
192	Arizona ash	20	30	Fair	Removal	100%
193	Arizona ash	17	25	Poor	Removal	100%
194	Carob	20	30	Good	Removal	100%
195	Carob	19	35	Good	Removal	100%

Tree ID Number	Species	Aggregate Trunk Diameter (inches)	Tree Height (feet)	Overall Health Rating	Proposed Impact Status	Proposed Impact Percentage
196	Carob	25	30	Poor	Removal	100%
197	Carob	43	45	Good	Removal	100%
198	Carob	28	25	Fair	Removal	100%
199	Arizona ash	11.5	30	Fair	Removal	100%
200	Arizona ash	12	20	Fair	Removal	100%
201	Arizona ash	13	25	Fair	Removal	100%
202	Jacaranda	29	42	Fair	Removal	100%
203	Jacaranda	25	50	Fair	Removal	100%
204	Mexican fan palm	20	24	Fair	Removal	100%
205	Jacaranda	24	35	Poor	Removal	100%
206	Jacaranda	19	25	Poor	Removal	100%
207	Jacaranda	23	60	Fair	Removal	100%
208	Jacaranda	26	35	Good	Removal	100%
209	Jacaranda	27.5	60	Fair	Removal	100%
210	Jacaranda	23	35	Good	Removal	100%
211	Chinese elm	18.5	30	Fair	Removal	100%
212	Chinese elm	22	25	Good	Removal	100%
213	Chinese elm	20	45	Fair	Removal	100%
214	Chinese elm	18	35	Poor	Removal	100%
215	Jacaranda	27.5	50	Good	Removal	100%
216	Jacaranda	23	35	Fair	Removal	100%
217	Jacaranda	26.5	55	Good	Removal	100%
218	Jacaranda	20	40	Good	Removal	100%

¹For tree ID numbers that were duplicated due to tagging errors, the letter “a” was attached to duplicate tree ID numbers for differentiation.

3.5 Conclusion

The proposed project activities require the demolition of the 21-acre current public housing complex to construct a new mixed-use and mixed-income housing development that will support existing and incoming residents to the city. This project is anticipated to require the removal of all 220 trees present on site and immediately adjacent (refer to Table 2). This includes 219 non-protected significant trees (14 of which are street trees) and one protected coast live oak tree. It could be highly difficult to maintain tree health during construction because the proposed project development could impact trees above and below ground within their root systems and canopies, and trees would not withstand such significant damage. Therefore, a permit will be required from the City prior to the removal of these trees.

In accordance with the City’s Protected Tree Ordinance, the Board of Public Works may require the following for the removal of a protected tree, as summarized in Table 3:

1. Replacement with at least four specimens of a protected variety. Each replacement tree shall be at least a 15-gallon, or larger specimen, such as a 24-inch box tree, measuring one inch or more in diameter one foot above the base, and be not less than seven feet in height

measured from the base. The size and number of replacement trees shall approximate the value of the tree to be replaced.

2. Replacement with trees of a lesser size or of a different protected species to be planted as replacement trees, if replacement trees of the size and species otherwise required pursuant to this Code are not available. In such event, a greater number of replacement trees may be required.
3. Relocation of a protected tree to another location on the property, provided that the environmental conditions of said new location are favorable to the survival of the tree and there is a reasonable probability that the tree will survive.

In addition, the City Planning Department policy requires mitigation at a 1:1 ratio for removal of the non-protected significant trees (including street trees). The Board of Public Works requires a minimum of 1:1 replacement ratio for every street tree removed and may charge an in-lieu fee for removal of street trees, per Section 62.171 and 62.177 of the Municipal Code.

The applicant plans to mitigate the protected tree and non-protected significant tree removals in accordance with the City's replacement ratios discussed above. Project tree replacement details are shown in Table 3, Table 4, and Table 5.

Table 3 Protected Tree Removals and Tree Replacement Summary

Tree ID Number	Species	Health Rating	Aggregate Trunk Diameter (inches)	Number of Replacement Trees	Replacement Trees
89	Coast live oak	Fair	27	4	24-in box sized oak tree
Total				4	24-in box sized oak tree

Table 4 Street Tree Removals and City Tree Replacement Summary

Tree ID Number	Species	Health Rating	Aggregate Trunk Diameter (inches)	Number of Replacement Trees	Replacement Trees
57	Mexican fan palm	Good	17	Minimum 1:1	24-in box sized tree
59	Mexican fan palm	Good	17	Minimum 1:1	24-in box sized tree
61	Mexican fan palm	Fair	17	Minimum 1:1	24-in box sized tree
109	Mexican fan palm	Fair	17	Minimum 1:1	24-in box sized tree
110a	Mexican fan palm	Good	21	Minimum 1:1	24-in box sized tree
111	Mexican fan palm	Fair	13	Minimum 1:1	24-in box sized tree
112	Mexican fan palm	Fair	12	Minimum 1:1	24-in box sized tree
113	Mexican fan palm	Good	14	Minimum 1:1	24-in box sized tree
144	Carrotwood	Fair	21	Minimum 1:1	24-in box sized tree
145	Carrotwood	Good	16	Minimum 1:1	24-in box sized tree
146	Carrotwood	Poor	18.5	Minimum 1:1	24-in box sized tree
147	Carrotwood	Poor	18	Minimum 1:1	24-in box sized tree
148	Carrotwood	Good	17	Minimum 1:1	24-in box sized tree
149	Carrotwood	Fair	19	Minimum 1:1	24-in box sized tree
Total				14	24-in box sized tree

Table 5 Non-Protected Significant Tree Removals and Tree Replacement Summary

Tree ID Number	Species	Health Rating	Aggregate Trunk Diameter (inches)	Number of Replacement Trees	Replacement Trees
1	Gold medallion	Good	8	1	24-in box sized tree
2	Gold medallion	Good	7	1	24-in box sized tree
3	Gold medallion	Fair	9	1	24-in box sized tree
4	Gold medallion	Fair	9	1	24-in box sized tree
5	Gold medallion	Good	8	1	24-in box sized tree
6	Gold medallion	Fair	8	1	24-in box sized tree
7	Gold medallion	Fair	8	1	24-in box sized tree
8	Mimosa	Good	20.5	1	24-in box sized tree
9	Mimosa	Fair	11	1	24-in box sized tree
10	Mimosa	Good	8.5	1	24-in box sized tree
11	Strawberry madrone	Poor	8	1	24-in box sized tree
12	Carob	Poor	27	1	24-in box sized tree
13	Floss silk	Good	9	1	24-in box sized tree
14	Carob	Fair	25	1	24-in box sized tree
15	Jacaranda	Fair	20	1	24-in box sized tree
16	Jacaranda	Good	25	1	24-in box sized tree
17	Jacaranda	Good	25	1	24-in box sized tree
18	Jacaranda	Fair	28	1	24-in box sized tree
19	Chinese elm	Fair	23	1	24-in box sized tree
20	Chinese elm	Fair	21.5	1	24-in box sized tree
21	Jacaranda	Good	21	1	24-in box sized tree
22	Brisbane box	Fair	25	1	24-in box sized tree
23	London plane	Good	16	1	24-in box sized tree
24	Brisbane box	Fair	22	1	24-in box sized tree
25	Jacaranda	Good	21	1	24-in box sized tree
26	Jacaranda	Good	20.5	1	24-in box sized tree
27	Chinese elm	Good	26	1	24-in box sized tree
28	Brisbane box	Good	25	1	24-in box sized tree
29	Jacaranda	Fair	11	1	24-in box sized tree
30	Chinese elm	Dead	19	1	24-in box sized tree
31	Jacaranda	Fair	20	1	24-in box sized tree
32	Brisbane box	Fair	20.5	1	24-in box sized tree
33	Mondell pine	Good	11	1	24-in box sized tree
34	Chinese elm	Good	23	1	24-in box sized tree
35	Chinese elm	Good	20	1	24-in box sized tree
36	Chinese elm	Poor	22	1	24-in box sized tree
37	Brisbane box	Good	28	1	24-in box sized tree
38	Jacaranda	Fair	25	1	24-in box sized tree
39	Olive	Poor	28	1	24-in box sized tree

Tree ID Number	Species	Health Rating	Aggregate Trunk Diameter (inches)	Number of Replacement Trees	Replacement Trees
40	Jacaranda	Good	29	1	24-in box sized tree
41	Jacaranda	Good	22	1	24-in box sized tree
42	Jacaranda	Fair	25.5	1	24-in box sized tree
43	Olive	Fair	22	1	24-in box sized tree
44	Jacaranda	Good	30.5	1	24-in box sized tree
45	Jacaranda	Good	27	1	24-in box sized tree
46	Jacaranda	Fair	31.5	1	24-in box sized tree
47	Jacaranda	Good	36	1	24-in box sized tree
48	Jacaranda	Fair	48	1	24-in box sized tree
49	Jacaranda	Fair	26	1	24-in box sized tree
50	Arizona ash	Good	11	1	24-in box sized tree
51	Carob	Good	17	1	24-in box sized tree
52	Carob	Good	20	1	24-in box sized tree
53	Chinese elm	Good	17	1	24-in box sized tree
54	Carob	Fair	15	1	24-in box sized tree
55	Chinese elm	Good	17	1	24-in box sized tree
56	Carob	Good	19.5	1	24-in box sized tree
58	Carob	Poor	12.5	1	24-in box sized tree
60	Carob	Poor	19.5	1	24-in box sized tree
62	Carob	Good	23	1	24-in box sized tree
63	Jacaranda	Good	17	1	24-in box sized tree
64	Carob	Fair	24	1	24-in box sized tree
65	Jacaranda	Fair	12	1	24-in box sized tree
66	Carob	Fair	26.5	1	24-in box sized tree
67	Jacaranda	Good	16	1	24-in box sized tree
68	Carob	Good	23	1	24-in box sized tree
69	Shamel ash	Good	25	1	24-in box sized tree
70	Jacaranda	Good	24.5	1	24-in box sized tree
71	Jacaranda	Fair	25	1	24-in box sized tree
72	Weeping fig	Good	28	1	24-in box sized tree
73	Jacaranda	Fair	22	1	24-in box sized tree
74	Southern magnolia	Poor	9	1	24-in box sized tree
75	Siberian elm	Fair	24	1	24-in box sized tree
76	Jacaranda	Fair	23.5	1	24-in box sized tree
77	Siberian elm	Fair	27	1	24-in box sized tree
78	Brisbane box	Good	26	1	24-in box sized tree
79	Weeping fig	Good	27	1	24-in box sized tree
80	Brisbane box	Fair	18.5	1	24-in box sized tree
81	Carob	Good	28	1	24-in box sized tree
82	Carob	Fair	41.5	1	24-in box sized tree

Housing Authority of the City of Los Angeles
One San Pedro Specific Plan Project

Tree ID Number	Species	Health Rating	Aggregate Trunk Diameter (inches)	Number of Replacement Trees	Replacement Trees
83	Carob	Poor	29	1	24-in box sized tree
84	London plane	Fair	11	1	24-in box sized tree
85	London plane	Fair	18	1	24-in box sized tree
86	London plane	Good	21	1	24-in box sized tree
87	London plane	Fair	12	1	24-in box sized tree
88	London plane	Fair	16.5	1	24-in box sized tree
89	Coast live oak	Fair	27	1	24-in box sized tree
90	Indian coral	Good	24	1	24-in box sized tree
91	Mexican fan palm	Good	16	1	24-in box sized tree
92	Pygmy date palm	Good	41	1	24-in box sized tree
93	Mexican fan palm	Good	16	1	24-in box sized tree
94	Jacaranda	Fair	23	1	24-in box sized tree
95	King palm	Good	14	1	24-in box sized tree
96	King palm	Good	12.5	1	24-in box sized tree
97	King palm	Good	12	1	24-in box sized tree
98	King palm	Good	13.5	1	24-in box sized tree
99	Brisbane box	Good	27	1	24-in box sized tree
100	Jacaranda	Fair	26	1	24-in box sized tree
101	Jacaranda	Fair	27	1	24-in box sized tree
102	Jacaranda	Good	33	1	24-in box sized tree
103	Umbrella tree	Fair	16	1	24-in box sized tree
104	Jacaranda	Fair	25	1	24-in box sized tree
105	Western Australia peppermint	Fair	10	1	24-in box sized tree
106	Western Australia peppermint	Poor	10	1	24-in box sized tree
107	Carob	Good	21	1	24-in box sized tree
107a ¹	Jacaranda	Good	29	1	24-in box sized tree
108	Brisbane box	Fair	25	1	24-in box sized tree
110	Jacaranda	Fair	15	1	24-in box sized tree
114	Carrotwood	Good	24.5	1	24-in box sized tree
115	Jacaranda	Good	21	1	24-in box sized tree
116	Arizona ash	Good	8	1	24-in box sized tree
117	Carob	Fair	27	1	24-in box sized tree
118	Jacaranda	Good	26	1	24-in box sized tree
119	Carob	Good	12	1	24-in box sized tree
120	Chinese elm	Good	20	1	24-in box sized tree
121	Chinese elm	Good	21	1	24-in box sized tree
122	Jacaranda	Good	19.5	1	24-in box sized tree
123	Chinese elm	Fair	20	1	24-in box sized tree
124	Chinese elm	Good	19	1	24-in box sized tree

Tree ID Number	Species	Health Rating	Aggregate Trunk Diameter (inches)	Number of Replacement Trees	Replacement Trees
125	Jacaranda	Fair	11	1	24-in box sized tree
126	Chinese elm	Fair	17	1	24-in box sized tree
127	Chinese elm	Good	13	1	24-in box sized tree
128	Jacaranda	Fair	18.5	1	24-in box sized tree
129	Jacaranda	Good	20	1	24-in box sized tree
130	Jacaranda	Poor	21	1	24-in box sized tree
131	Siberian elm	Good	17	1	24-in box sized tree
132	Chinese elm	Fair	19	1	24-in box sized tree
133	Jacaranda	Fair	16	1	24-in box sized tree
134	Chinese elm	Good	19	1	24-in box sized tree
135	Brisbane box	Good	18	1	24-in box sized tree
136	Brisbane box	Good	18.5	1	24-in box sized tree
137	Chinese elm	Good	22	1	24-in box sized tree
138	Chinese elm	Good	21	1	24-in box sized tree
139	Chinese elm	Good	20	1	24-in box sized tree
140	Chinese elm	Poor	20	1	24-in box sized tree
141	Brisbane box	Good	20	1	24-in box sized tree
142	Brisbane box	Good	29.5	1	24-in box sized tree
143	Chinese elm	Good	21	1	24-in box sized tree
150	Mondell pine	Fair	12.5	1	24-in box sized tree
151	Brisbane box	Good	20	1	24-in box sized tree
152	Cook pine	Good	14	1	24-in box sized tree
153	Jacaranda	Fair	22	1	24-in box sized tree
154	Jacaranda	Good	23.5	1	24-in box sized tree
155	Jacaranda	Fair	20	1	24-in box sized tree
156	Jacaranda	Good	23	1	24-in box sized tree
157	Jacaranda	Good	23	1	24-in box sized tree
158	Mondell pine	Fair	10	1	24-in box sized tree
159	Mondell pine	Good	10	1	24-in box sized tree
160	Mondell pine	Fair	11.5	1	24-in box sized tree
161	Mondell pine	Good	10	1	24-in box sized tree
162	Mondell pine	Fair	10.5	1	24-in box sized tree
163	Mondell pine	Good	10	1	24-in box sized tree
164	Jacaranda	Good	23	1	24-in box sized tree
165	Jacaranda	Fair	23	1	24-in box sized tree
166	Jacaranda	Fair	17.5	1	24-in box sized tree
167	Jacaranda	Good	24	1	24-in box sized tree
168	Jacaranda	Good	23.5	1	24-in box sized tree
169	Jacaranda	Good	24	1	24-in box sized tree
170	Jacaranda	Poor	18	1	24-in box sized tree

Housing Authority of the City of Los Angeles
One San Pedro Specific Plan Project

Tree ID Number	Species	Health Rating	Aggregate Trunk Diameter (inches)	Number of Replacement Trees	Replacement Trees
171	Jacaranda	Fair	21	1	24-in box sized tree
172	Jacaranda	Fair	23.5	1	24-in box sized tree
173	Jacaranda	Good	24	1	24-in box sized tree
174	Jacaranda	Good	26.5	1	24-in box sized tree
175	Jacaranda	Good	26	1	24-in box sized tree
176	Jacaranda	Good	18	1	24-in box sized tree
177	Jacaranda	Fair	19	1	24-in box sized tree
178	Jacaranda	Good	24.5	1	24-in box sized tree
179	Jacaranda	Fair	24	1	24-in box sized tree
180	Jacaranda	Fair	25.5	1	24-in box sized tree
181	London plane	Fair	19	1	24-in box sized tree
182	London plane	Fair	22	1	24-in box sized tree
183	London plane	Fair	19	1	24-in box sized tree
184	London plane	Fair	12	1	24-in box sized tree
185	Gold medallion	Fair	8	1	24-in box sized tree
186	Brisbane box	Fair	16	1	24-in box sized tree
187	Carob	Fair	32	1	24-in box sized tree
188	Carob	Fair	38.5	1	24-in box sized tree
189	Carob	Poor	26	1	24-in box sized tree
190	Carrotwood	Good	27.5	1	24-in box sized tree
191	Arizona ash	Poor	12	1	24-in box sized tree
192	Arizona ash	Fair	20	1	24-in box sized tree
193	Arizona ash	Poor	17	1	24-in box sized tree
194	Carob	Good	20	1	24-in box sized tree
195	Carob	Good	19	1	24-in box sized tree
196	Carob	Poor	25	1	24-in box sized tree
197	Carob	Good	43	1	24-in box sized tree
198	Carob	Fair	28	1	24-in box sized tree
199	Arizona ash	Fair	11.5	1	24-in box sized tree
200	Arizona ash	Fair	12	1	24-in box sized tree
201	Arizona ash	Fair	13	1	24-in box sized tree
202	Jacaranda	Fair	29	1	24-in box sized tree
203	Jacaranda	Fair	25	1	24-in box sized tree
204	Mexican fan palm	Fair	20	1	24-in box sized tree
205	Jacaranda	Poor	24	1	24-in box sized tree
206	Jacaranda	Poor	19	1	24-in box sized tree
207	Jacaranda	Fair	23	1	24-in box sized tree
208	Jacaranda	Good	26	1	24-in box sized tree
209	Jacaranda	Fair	27.5	1	24-in box sized tree
210	Jacaranda	Good	23	1	24-in box sized tree

Tree ID Number	Species	Health Rating	Aggregate Trunk Diameter (inches)	Number of Replacement Trees	Replacement Trees
211	Chinese elm	Fair	18.5	1	24-in box sized tree
212	Chinese elm	Good	22	1	15-gal tree
213	Chinese elm	Fair	20	1	24-in box sized tree
214	Chinese elm	Poor	18	1	24-in box sized tree
215	Jacaranda	Good	27.5	1	24-in box sized tree
216	Jacaranda	Fair	23	1	24-in box sized tree
217	Jacaranda	Good	26.5	1	24-in box sized tree
218	Jacaranda	Good	20	1	24-in box sized tree
214	Chinese elm	Good	22	1	24-in box sized tree
215	Jacaranda	Fair	20	1	24-in box sized tree
216	Jacaranda	Poor	18	1	24-in box sized tree
217	Jacaranda	Good	27.5	1	24-in box sized tree
218	Jacaranda	Fair	23	1	24-in box sized tree
Total				205	24-in box sized tree

4 Assumptions and Limiting Conditions

1. Any legal description provided to the consultant / appraiser is assumed to be correct. Any titles and ownership to any property are assumed to be good and marketable.
2. Care has been taken to obtain all information from reliable sources. All data has been verified in so far as possible for the accuracy of information provided by others.
3. The Consultant/appraiser shall not be required to give testimony or attend court by reason of this report unless subsequent contractual arrangements are made, including payment of an additional fee for such services as described in the fee schedule and contract of engagement.
4. Loss or alteration of any part of this report invalidates the entire report.
5. Possession of this report or a copy thereof does not imply right of publication or use for any purpose by any other than the person to whom is addressed, without the prior expressed written consent of the consultant/appraiser.
6. This report and values expressed herein represent the opinion of the consultant, and the consultant's fees is in no way contingent upon the reporting of a specified value, a stipulated result, the occurrence of a subsequent event, nor upon any finding to be reported.
7. Sketches, diagrams, graphs, photographs in this report, being intended as visual aids, are not necessarily to scale and should not be construed as engineering or architectural reports or surveys.
8. Unless expressed otherwise: 1) information contained in this report covers only those items that were examined and reflects the condition of those items at the time of inspection: and 2) the inspection is limited to visual examination of accessible items without dissection, excavation, probing or coring. There is no warranty or guarantee, expressed or implied, that problems or deficiencies of the trees or property on question may not arise in the future.

5 Arborist Disclosure Statement

Arborists are tree specialists who use their education, knowledge, training and experience to examine trees, recommend measures to enhance the beauty and health of trees, and attempt to reduce the risk of living near trees. Clients may choose to accept or disregard the recommendations of the arborist, or to seek additional advice.

Arborists cannot detect every condition that could possibly lead to the structural failure of a tree. Trees are living organisms that fail in ways we do not fully understand. Conditions are often hidden within trees and below ground. Arborists cannot guarantee that a tree will be healthy or safe under all circumstances, or for a specified period of time. Likewise, remedial treatments, like any medicine, cannot be guaranteed.

Treatment, pruning and removal of trees may involve considerations beyond the scope of the arborist's services such as property boundaries, property ownership, site lines, disputes between neighbors, and other issues. Arborists cannot take such considerations into account unless complete and accurate information is disclosed to the arborist. An arborist should then be expected to reasonably rely upon the completeness and accuracy of the information provided.

Trees can be managed but they cannot be controlled. To live near trees is to accept some degree of risk. The only way to eliminate all risk associated with trees is to eliminate all trees.

6 List of Preparers

Kelly Lewis

ASCA Registered Consulting Arborist #669

ISA Certified Arborist WC-4395

ISA Certified Tree Worked 1430C

ISA Tree Risk Assessor Qualified

ASCA Tree and Plant Appraisal Qualified

Appendix A

Protected Tree Matrix

Tree ID Number	Species Name	Number of Trunks	Individual Trunk Diameters (inches)	Aggregate Trunk Diameters (inches)	Tree Height (feet)	Crown Spread (N, NE, E, SE, S, SW, W, NW)	Overall Health	Notes	Damage/Issues
1	Gold medallion (<i>Cassia leptophylla</i>)	1	8	8	20	7, 13, 13, 13, 12, 13, 12, 9	Good		
2	Gold medallion (<i>Cassia leptophylla</i>)	1	7	7	20	5, 7, 11, 8, 7, 8, 10, 9	Good		mechanical damage on trunk
3	Gold medallion (<i>Cassia leptophylla</i>)	1	9	9	20	9, 10, 14, 13, 13, 15, 18, 12	Good		Good
4	Gold medallion (<i>Cassia leptophylla</i>)	1	9	9	25	12, 15, 16, 13, 15, 12, 15, 16	Good		
5	Gold medallion (<i>Cassia leptophylla</i>)	1	8	8	20	11, 13, 16, 15, 13, 14, 15, 14	Fair		
6	Gold medallion (<i>Cassia leptophylla</i>)	1	8	8	20	10, 11, 14, 13, 12, 12, 15, 10	Good	damage on trunk	
7	Gold medallion (<i>Cassia leptophylla</i>)	1	8	8	20	8, 10, 12, 11, 10, 12, 14, 12	Good		
8	Mimosa (<i>Albizia julibrissin</i>)	3	8.5, 5.5, 6.5	20.5	20	15, 13, 9, 11, 17, 16, 13, 14	Good		
9	Mimosa (<i>Albizia julibrissin</i>)	2	8, 3	11	20	18, 13, 7, 8, 9, 10, 10, 13	Fair		
10	Mimosa (<i>Albizia julibrissin</i>)	2	4, 4.5	8.5	15	10, 8, 8, 8, 12, 11, 13, 9	Good		
11	Strawberry madrone (<i>Arbutus unedo</i>)	2	4, 4	8	15	4, 9, 14, 12, 6, 6, 6, 7	Poor		severe mechanical damage at tree base
12	Carob (<i>Ceratonia siliqua</i>)	1	27	27	35	15, 15, 11, 10, 10, 16, 21, 18	Good		
13	Floss silk (<i>Ceiba speciosa</i>)	1	9	9	15	7, 7, 4, 7, 7, 6, 7, 6	Good		
14	Carob (<i>Ceratonia siliqua</i>)	1	25	25	35	11, 12, 13, 11, 10, 13, 11, 13	Good	seepage on trunk	
15	Jacaranda (<i>Jacaranda mimosifolia</i>)	1	20	20	60	12, 12, 13, 15, 17, 19, 24, 15	Fair		
16	Jacaranda (<i>Jacaranda mimosifolia</i>)	1	25	25	40	24, 24, 16, 21, 16, 15, 16, 29	Good		
17	Jacaranda (<i>Jacaranda mimosifolia</i>)	1	25	25	60	17, 20, 23, 26, 31, 28, 23, 22	Good		
18	Jacaranda (<i>Jacaranda mimosifolia</i>)	1	28	28	55	19, 18, 31, 32, 18, 20, 22, 25	Fair		
19	Chinese elm (<i>Ulmus parvifolia</i>)	1	23	23	50	24, 11, 9, 15, 22, 18, 13, 16	Fair		
20	Chinese elm (<i>Ulmus parvifolia</i>)	1	21.5	21.5	45	19, 20, 15, 23, 23, 24, 18, 23	Fair		
21	Chinese elm (<i>Ulmus parvifolia</i>)	1	21	21	50	22, 17, 12, 20, 23, 17, 14, 18	Good		
22	Jacaranda (<i>Jacaranda mimosifolia</i>)	1	25	25	40	19, 18, 13, 18, 26, 17, 20, 20	Fair		
23	Brisbane box (<i>Lophostemon confertus</i>)	1	16	16	50	13, 15, 17, 16, 15, 13, 11, 12	Good		
24	London planetree (<i>Platanus × acerifolia</i>)	1	22	22	60	10, 16, 16, 15, 15, 12, 18, 15	Fair	curling leaves, anthracnose	
25	Brisbane box (<i>Lophostemon confertus</i>)	1	21	21	55	15, 17, 18, 13, 9, 12, 24, 18	Good		

Housing Authority of the City of Los Angeles
One San Pedro Specific Plan Project

Tree ID Number	Species Name	Number of Trunks	Individual Trunk Diameters (inches)	Aggregate Trunk Diameters (inches)	Tree Height (feet)	Crown Spread (N, NE, E, SE, S, SW, W, NW)	Overall Health	Notes	Damage/Issues
26	Jacaranda (<i>Jacaranda mimosifolia</i>)	1	20.5	20.5	40	14, 17, 17, 18, 18, 21, 22, 24	Good		
27	Jacaranda (<i>Jacaranda mimosifolia</i>)	1	26	26	50	19, 19, 19, 20, 21, 21, 23, 21	Good		
28	Chinese elm (<i>Ulmus parvifolia</i>)	1	25	25	45	26, 25, 13, 22, 25, 21, 25, 32	Good	uneven canopy	
29	Brisbane box (<i>Lophostemon confertus</i>)	1	11	11	30	10, 13, 15, 14, 13, 14, 16, 12	Fair		trunk gall
30	Jacaranda (<i>Jacaranda mimosifolia</i>)	1	19	19	35	10, 10, 18, 13, 12, 13, 14, 17	Dead	decay on trunk	
31	Jacaranda (<i>Jacaranda mimosifolia</i>)	1	20	20	50	6, 11, 15, 17, 21, 24, 26, 20	Fair		unbalanced crown
32	Brisbane box (<i>Lophostemon confertus</i>)	1	20.5	20.5	35	6, 13, 16, 15, 15, 14, 17, 15	Fair		
33	Mondell pine (<i>Pinus eldarica</i>)	1	11	11	15	8, 8, 9, 8, 11, 7, 8, 7	Good		
34	Chinese elm (<i>Ulmus parvifolia</i>)	1	23	23	45	10, 19, 20, 21, 16, 17, 16, 15	Good	previously pruned	
35	Chinese elm (<i>Ulmus parvifolia</i>)	1	20	20	40	9, 15, 23, 21, 19, 18, 18, 13	Good		
36	Chinese elm (<i>Ulmus parvifolia</i>)	1	22	22	45	5, 8, 7, 11, 13, 18, 20, 13	Poor	sparse canopy, epicormic growth	
37	Brisbane box (<i>Lophostemon confertus</i>)	1	28	28	50	15, 20, 30, 15, 17, 18, 22, 16	Good		
38	Jacaranda (<i>Jacaranda mimosifolia</i>)	1	25	25	45	20, 17, 14, 17, 22, 18, 16, 13	Fair	dieback	
39	Olive (<i>Olea europaea</i>)	3	10, 10, 8	28	20	13, 13, 13, 13, 13, 13, 13, 13	Poor		
40	Jacaranda (<i>Jacaranda mimosifolia</i>)	1	29	29	60	24, 18, 18, 20, 30, 20, 41, 15	Good	uneven canopy	
41	Jacaranda (<i>Jacaranda mimosifolia</i>)	1	22	22	40	20, 20, 21, 18, 19, 18, 18, 19	Good		
42	Jacaranda (<i>Jacaranda mimosifolia</i>)	1	25.5	25.5	55	13, 17, 25, 19, 14, 28, 31, 30	Fair		
43	Olive (<i>Olea europaea</i>)	3	7, 8, 7	22	16	10, 9, 8, 9, 10, 9, 10, 9	Fair		
44	Jacaranda (<i>Jacaranda mimosifolia</i>)	1	30.5	30.5	60	17, 17, 20, 26, 25, 21, 18, 23	Good		
45	Jacaranda (<i>Jacaranda mimosifolia</i>)	1	27	27	50	22, 20, 18, 22, 25, 25, 26, 24	Good		
46	Jacaranda (<i>Jacaranda mimosifolia</i>)	1	31.5	31.5	35	15, 17, 21, 19, 24, 24, 27, 24	Fair	somewhat sparse canopy	
47	Jacaranda (<i>Jacaranda mimosifolia</i>)	1	36	36	50	13, 25, 34, 26, 13, 19, 23, 18	Good	somewhat sparse canopy	
48	Jacaranda (<i>Jacaranda mimosifolia</i>)	1	48	48	55	23, 15, 14, 18, 24, 19, 25, 23	Fair	somewhat sparse canopy, epicormic growth	
49	Jacaranda (<i>Jacaranda mimosifolia</i>)	1	26	26	45	18, 18, 16, 22, 24, 22, 18, 18	Fair	somewhat sparse canopy, epicormic growth	
50	Arizona ash (<i>Fraxinus velutina</i>)	1	11	11	25	12, 10, 12, 12, 12, 10, 13, 12	Good		

Tree ID Number	Species Name	Number of Trunks	Individual Trunk Diameters (inches)	Aggregate Trunk Diameters (inches)	Tree Height (feet)	Crown Spread (N, NE, E, SE, S, SW, W, NW)	Overall Health	Notes	Damage/Issues
51	Carob (<i>Ceratonia siliqua</i>)	1	17	17	20	6, 6, 5, 5, 6, 8, 10, 8	Good		
52	Carob (<i>Ceratonia siliqua</i>)	1	20	20	25	5, 5, 4, 5, 6, 6, 7, 7	Good		
53	Chinese elm (<i>Ulmus parvifolia</i>)	1	17	17	40	19, 18, 18, 17, 17, 19, 22, 20	Good		
54	Carob (<i>Ceratonia siliqua</i>)	1	15	15	25	2, 3, 2, 6, 11, 11, 9, 5	Fair		
55	Chinese elm (<i>Ulmus parvifolia</i>)	1	17	17	40	23, 6, 4, 12, 12, 20, 28, 20	Good		leaning
56	Carob (<i>Ceratonia siliqua</i>)	1	19.5	19.5	35	1, 3, 8, 11, 15, 16, 13, 2	Good		
57	Mexican fan palm (<i>Washingtonia robusta</i>)	1	17	17	25	5, 5, 5, 5, 5, 5, 5	Good	not tagged, city parkway tree	frond chlorosis
58	Carob (<i>Ceratonia siliqua</i>)	1	12.5	12.5	30	4, 4, 7, 11, 11, 10, 10, 4	Poor	somewhat sparse canopy, chlorosis	
59	Mexican fan palm (<i>Washingtonia robusta</i>)	1	17	17	25	5, 5, 5, 5, 5, 5, 5	Good	not tagged, city parkway tree	
60	Carob (<i>Ceratonia siliqua</i>)	1	19.5	19.5	35	8, 4, 3, 3, 13, 12, 12, 11	Poor	dead branches	
61	Mexican fan palm (<i>Washingtonia robusta</i>)	1	17	17	25	5, 5, 5, 5, 5, 5, 5	Fair	not tagged, city parkway tree	frond chlorosis
62	Carob (<i>Ceratonia siliqua</i>)	1	23	23	35	7, 7, 9, 7, 11, 11, 13, 10	Good		
63	Jacaranda (<i>Jacaranda mimosifolia</i>)	1	17	17	22	21, 20, 19, 19, 19, 12, 7, 12	Good		
64	Carob (<i>Ceratonia siliqua</i>)	1	24	24	35	10, 18, 13, 13, 20, 22, 13, 7	Fair	chlorosis	
65	Jacaranda (<i>Jacaranda mimosifolia</i>)	1	12	12	30	13, 12, 12, 11, 14, 13, 14, 12	Fair		galls on trunk
66	Carob (<i>Ceratonia siliqua</i>)	1	26.5	26.5	40	4, 4, 7, 12, 10, 12, 14, 6	Fair	decay on trunk	
67	Jacaranda (<i>Jacaranda mimosifolia</i>)	1	16	16	25	14, 14, 15, 15, 16, 18, 21, 17	Good		
68	Carob (<i>Ceratonia siliqua</i>)	1	23	23	35	10, 10, 9, 8, 11, 12, 13, 11	Good	seepage on trunk	
69	Shamel ash (<i>Fraxinus uhdei</i>)	1	25	25	45	15, 17, 19, 17, 15, 14, 14, 14	Good		
70	Jacaranda (<i>Jacaranda mimosifolia</i>)	1	24.5	24.5	50	17, 19, 21, 21, 17, 14, 16, 17	Good		
71	Jacaranda (<i>Jacaranda mimosifolia</i>)	1	25	25	40	20, 20, 16, 18, 21, 16, 13, 16	Fair		
72	Weeping fig (<i>Ficus benjamina</i>)	1	28	28	40	13, 13, 17, 19, 17, 13, 11, 11	Good		
73	Jacaranda (<i>Jacaranda mimosifolia</i>)	1	22	22	45	5, 10, 13, 13, 15, 16, 17, 14	Fair		
74	Southern magnolia (<i>Magnolia grandiflora</i>)	1	9	9	25	8, 6, 6, 6, 6, 6, 10, 10	Poor	dead branches	
75	Siberian elm (<i>Ulmus pumila</i>)	1	24	24	40	13, 12, 12, 12, 11, 10, 6, 9	Fair		epicormic growth and gall on trunk

Housing Authority of the City of Los Angeles
One San Pedro Specific Plan Project

Tree ID Number	Species Name	Number of Trunks	Individual Trunk Diameters (inches)	Aggregate Trunk Diameters (inches)	Tree Height (feet)	Crown Spread (N, NE, E, SE, S, SW, W, NW)	Overall Health	Notes	Damage/Issues
76	Jacaranda (<i>Jacaranda mimosifolia</i>)	1	23.5	23.5	50	6, 11, 11, 17, 14, 17, 11,	Fair	sparse canopy	
77	Siberian elm (<i>Ulmus pumila</i>)	1	27	27	40	15, 14, 13, 13, 13, 12, 9, 11	Fair		epicormic growth and gall on trunk
78	Brisbane box (<i>Lophostemon confertus</i>)	1	26	26	60	15, 13, 16, 15, 18, 16, 16, 13	Good		
79	Weeping fig (<i>Ficus benjamina</i>)	1	27	27	50	13, 13, 14, 13, 13, 13, 14, 13	Good		mechanical damage to roots
80	Brisbane box (<i>Lophostemon confertus</i>)	1	18.5	18.5	45	11, 11, 10, 12, 16, 18, 10, 11	Fair		
81	Carob (<i>Ceratonia siliqua</i>)	1	28	28	35	6, 10, 15, 17, 20, 13, 9, 12	Good	decay on trunk	
82	Carob (<i>Ceratonia siliqua</i>)	1	41.5	41.5	40	6, 3, 5, 10, 14, 20, 13, 11	Fair	somewhat sparse canopy	
83	Carob (<i>Ceratonia siliqua</i>)	1	29	29	35	5, 14, 18, 19,	Poor		decay on base and cavity in trunk
84	London planetree (<i>Platanus × acerifolia</i>)	1	11	11	30	11, 11, 11, 11, 11, 11, 11, 11	Fair	sooty mold	
85	London planetree (<i>Platanus × acerifolia</i>)	1	18	18	40	19, 18, 17, 17, 19, 18, 17, 17	Fair		bulge at trunk base, sooty mold
86	London planetree (<i>Platanus × acerifolia</i>)	1	21	21	55	13, 14, 17, 17, 13, 20, 20, 17	Good		
87	London planetree (<i>Platanus × acerifolia</i>)	1	12	12	35	12, 9, 11, 9, 8, 11, 12, 10	Fair		sooty mold, epicormic growth on trunk
88	London planetree (<i>Platanus × acerifolia</i>)	1	16.5	16.5	55	9, 11, 11, 12, 19, 19, 20, 12	Fair	powdery mildew, dieback	
89	Coast live oak (<i>Quercus agrifolia</i>)	1	27	27	35	13, 12, 23, 25, 27, 15, 9, 11	Fair		leaning, epicormic growth on trunk,
90	Indian coral (<i>Erythrina variegata</i>)	3	10.5, 7, 6.5	24	20	5, 5, 11, 5, 7, 4, 6, 5	Good		
91	Mexican fan palm (<i>Washingtonia robusta</i>)	1	16	16	25	5, 5, 5, 5, 5, 5, 5, 5	Good		leaning, roots exposed, leaf chlorosis
92	Pygmy date palm (<i>Phoenix roebelenii</i>)	4	10, 10, 10, 11	41	15	4, 3, 7, 3, 3, 7, 3, 6	Good		
93	Mexican fan palm (<i>Washingtonia robusta</i>)	1	16	16	25	5, 5, 5, 5, 5, 5, 5, 5	Good		
94	Jacaranda (<i>Jacaranda mimosifolia</i>)	1	23	23	60	14, 13, 16, 20, 20, 20, 20, 19	Fair	somewhat sparse canopy	
95	King palm (<i>Archontophoenix alexandrae</i>)	3	4, 5, 5	14	10	5, 5, 5, 5, 5, 5, 5, 5	Good		
96	King palm (<i>Archontophoenix alexandrae</i>)	2	8, 4.5	12.5	20	7, 7, 7, 7, 7, 7, 7, 7	Good		
97	King palm (<i>Archontophoenix alexandrae</i>)	2	5	12	10	5, 5, 5, 5, 5, 5, 5, 5	Good		
98	King palm (<i>Archontophoenix alexandrae</i>)	2	9, 4.5	13.5	20	6, 6, 6, 6, 6, 6, 6, 6	Good		
99	Brisbane box (<i>Lophostemon confertus</i>)	1	27	27	45	14, 15, 16, 17, 20, 22, 24, 22	Good		
100	Jacaranda (<i>Jacaranda mimosifolia</i>)	1	26	26	50	17, 17, 11, 18, 21, 19, 11, 19	Fair	dieback, sparse canopy	

Tree ID Number	Species Name	Number of Trunks	Individual Trunk Diameters (inches)	Aggregate Trunk Diameters (inches)	Tree Height (feet)	Crown Spread (N, NE, E, SE, S, SW, W, NW)	Overall Health	Notes	Damage/Issues
101	Jacaranda (<i>Jacaranda mimosifolia</i>)	1	27	27	50	24, 22, 26, 24, 22, 16, 10, 17	Fair		root bulge, leaning
102	Jacaranda (<i>Jacaranda mimosifolia</i>)	1	33	33	65	22, 20, 15, 28, 28, 21, 24, 28	Good	some dieback	root bulge, leaning
103	Umbrella tree (<i>Heptapleurum actinophyllum</i>)	1	16	16	20	5, 6, 6, 7, 7, 8, 9, 8	Fair		gall on trunk, mechanical damage on roots, leaf chlorosis
104	Jacaranda (<i>Jacaranda mimosifolia</i>)	1	25	25	65	18, 18, 18, 22, 25, 22, 25, 11	Fair	dieback	
105	Western Australia peppermint (<i>Agonis flexuosa</i>)	1	10	10	15	7, 8, 11, 8, 11, 10, 10, 9	Fair		twig dieback
106	Western Australia peppermint (<i>Agonis flexuosa</i>)	1	10	10	15	11, 13, 8, 6, 8, 8, 5, 5	Poor	very sparse canopy	
107	Carob (<i>Ceratonia siliqua</i>)	1	21	21	25	8, 10, 11, 10, 10, 10, 10, 9	Good		leaf chlorosis
107a ¹	Jacaranda (<i>Jacaranda mimosifolia</i>)	1	29	29	45	28, 28, 28, 25, 19, 22, 28, 28	Good		
108	Brisbane box (<i>Lophostemon confertus</i>)	1	25	25	50	17, 15, 23, 18, 11, 21, 20, 20	Fair		
109	Mexican fan palm (<i>Washingtonia robusta</i>)	1	17	17	25	5, 5, 5, 5, 5, 5, 5, 5	Fair	not tagged, city parkway tree	leaf chlorosis, mechanical damage to roots
110	Jacaranda (<i>Jacaranda mimosifolia</i>)	1	15	15	55	19, 22, 20, 19, 14, 9, 8, 8	Fair		
110a ¹	Mexican fan palm (<i>Washingtonia robusta</i>)	1	21	21	25	5, 5, 5, 5, 5, 5, 5, 5	Good	not tagged, city parkway tree	
111	Mexican fan palm (<i>Washingtonia robusta</i>)	1	13	13	30	5, 5, 5, 5, 5, 5, 5, 5	Fair	not tagged, city parkway tree	
112	Mexican fan palm (<i>Washingtonia robusta</i>)	1	12	12	25	5, 5, 5, 5, 5, 5, 5,	Fair	not tagged, city parkway tree	
113	Mexican fan palm (<i>Washingtonia robusta</i>)	1	14	14	25	5, 5, 5, 5, 5, 5, 5, 5	Fair	not tagged, city parkway tree	
114	Carrotwood (<i>Cupaniopsis anacardioides</i>)	1	24.5	24.5	40	5, 5, 6, 10, 15, 18, 17, 12	Good		
115	Jacaranda (<i>Jacaranda mimosifolia</i>)	1	21	21	30	10, 16, 13, 11, 18, 20, 20, 20	Good		trunk exudation from old cuts
116	Arizona ash	1	8	8	15	5, 5, 5, 5, 5, 5, 5, 5	Good		
117	Carob (<i>Ceratonia siliqua</i>)	1	27	27	30	11, 9, 10, 7, 8, 12, 11, 14	Fair		cavity
118	Jacaranda (<i>Jacaranda mimosifolia</i>)	1	26	26	45	20, 24, 21, 27, 23, 22, 19, 23	Good		
119	Carob (<i>Ceratonia siliqua</i>)	1	12	12	15	8, 7, 5, 8, 9, 9, 5, 9	Good		leaning, leaf chlorosis
120	Chinese Elm (<i>Ulmus parvifolia</i>)	1	20	20	45	6, 5, 6, 11, 19, 26, 29, 15	Good	previously pruned	
121	Chinese Elm (<i>Ulmus parvifolia</i>)	1	21	21	40	10, 11, 14, 17, 21, 25, 26, 26	Good		gummosis from old wound
122	Jacaranda (<i>Jacaranda mimosifolia</i>)	1	19.5	19.5	35	16, 21, 11, 20, 17, 15, 10, 7	Good	previously pruned	
123	Chinese Elm (<i>Ulmus parvifolia</i>)	1	20	20	25	11, 16, 14, 14, 22, 22, 12, 9	Fair		bulge mid trunk, twig dieback, gummosis
124	Chinese Elm (<i>Ulmus parvifolia</i>)	1	19	19	45	13, 13, 20, 29, 23, 27, 21, 20	Good		

Housing Authority of the City of Los Angeles
One San Pedro Specific Plan Project

Tree ID Number	Species Name	Number of Trunks	Individual Trunk Diameters (inches)	Aggregate Trunk Diameters (inches)	Tree Height (feet)	Crown Spread (N, NE, E, SE, S, SW, W, NW)	Overall Health	Notes	Damage/Issues
125	Jacaranda (<i>Jacaranda mimosifolia</i>)	1	11	11	15	7, 11, 13, 14, 12, 10, 9, 7	Fair		galls on trunk, twig dieback
126	Chinese Elm (<i>Ulmus parvifolia</i>)	1	17	17	45	18, 25, 19, 21, 22, 25, 20, 23	Fair	somewhat sparse. suckers at base	
127	Chinese Elm (<i>Ulmus parvifolia</i>)	1	13	13	20	15, 10, 15, 6, 8, 10, 20, 22	Good		bulge at trunk base
128	Jacaranda (<i>Jacaranda mimosifolia</i>)	1	18.5	18.5	30	15, 15, 15, 15, 17, 17, 5, 15	Fair	previously topped	
129	Jacaranda (<i>Jacaranda mimosifolia</i>)	1	20	20	30	8, 7, 9, 16, 15, 11, 10, 8	Good		
130	Jacaranda (<i>Jacaranda mimosifolia</i>)	1	21	21	50	11, 13, 11, 15, 13, 17, 20, 20	Poor	previously topped	
131	Siberian elm (<i>Ulmus pumila</i>)	1	17	17	17	5, 4, 6, 6, 6, 6, 6, 7	Good		epicormic growth on trunk
132	Chinese elm (<i>Ulmus parvifolia</i>)	1	19	19	35	11, 11, 11, 13, 13, 13, 11, 11	Fair	previously pruned sprinkler adjacent to trunk, X spray painted on trunk	
133	Jacaranda (<i>Jacaranda mimosifolia</i>)	1	16	16	35	12, 10, 23, 18, 6, 5, 5, 7	Fair		small cavity on trunk, sparse canopy
134	Chinese elm (<i>Ulmus parvifolia</i>)	1	19	19	40	15, 13, 15, 17, 20, 20, 20, 15	Good		
135	Brisbane box (<i>Lophostemon confertus</i>)	1	18	18	35	11, 11, 15, 13, 13, 15, 15, 15	Good		
136	Brisbane box (<i>Lophostemon confertus</i>)	1	18.5	18.5	30	6, 11, 15, 20, 14, 15, 13, 8	Good		
137	Chinese elm (<i>Ulmus parvifolia</i>)	1	22	22	40	6, 8, 10, 9, 8, 22, 16, 9	Good		leaning
138	Chinese elm (<i>Ulmus parvifolia</i>)	1	21	21	50	15, 18, 15, 17, 17, 17, 20, 21	Good	epicormic growth	
139	Chinese elm (<i>Ulmus parvifolia</i>)	1	20	20	35	8, 7, 10, 15, 14, 16, 20, 15	Good		epicormic growth on branches
140	Chinese elm (<i>Ulmus parvifolia</i>)	1	20	20	30	11, 16, 15, 15, 24, 17, 3, 3	Poor	previously pruned, uneven canopy	
141	Brisbane box (<i>Lophostemon confertus</i>)	1	20	20	35	6, 6, 7, 10, 10, 11, 7, 10	Good		
142	Brisbane box (<i>Lophostemon confertus</i>)	1	29.5	29.5	55	8, 15, 22, 20, 20, 22, 16, 17	Good		
143	Chinese elm (<i>Ulmus parvifolia</i>)	1	21	21	35	6, 6, 7, 7, 18, 25, 26, 15	Good		leaning
144	Carrotwood (<i>Cupaniopsis anacardioides</i>)	1	21	21	30	13, 8, 8, 7, 7, 7, 8, 9	Fair	not tagged, city parkway trees	dieback
145	Carrotwood (<i>Cupaniopsis anacardioides</i>)	1	16	16	20	5, 5, 5, 8, 9, 10, 9, 9	Good	not tagged, city parkway tree	galls and cavity on trunk, branch dieback
146	Carrotwood (<i>Cupaniopsis anacardioides</i>)	1	18.5	18.5	25	18, 13, 9, 6, 11, 18, 15, 17	Poor	not tagged, city parkway trees	heavy dieback, sparse canopy, suckers
147	Carrotwood (<i>Cupaniopsis anacardioides</i>)	1	18	18	20	7, 7, 6, 6, 6, 6, 6	Poor	not tagged, city parkway tree	dieback on branch and trunk, galls on trunk
148	Carrotwood (<i>Cupaniopsis anacardioides</i>)	1	17	17	35	10, 10, 10, 11, 15, 15, 15, 13	Good	not tagged, city parkway trees	
149	Carrotwood (<i>Cupaniopsis anacardioides</i>)	1	19	19	20	6, 6, 6, 6, 6, 6, 6	Fair	not tagged, city parkway trees	mechanical damage to trunk and roots, branch dieback

Tree ID Number	Species Name	Number of Trunks	Individual Trunk Diameters (inches)	Aggregate Trunk Diameters (inches)	Tree Height (feet)	Crown Spread (N, NE, E, SE, S, SW, W, NW)	Overall Health	Notes	Damage/Issues
150	Mondell pine (<i>Pinus eldarica</i>)	1	12.5	12.5	30	13, 15, 12, 11, 6, 11, 13, 15	Fair		
151	Brisbane box (<i>Lophostemon confertus</i>)	1	20	20	35	11, 15, 11, 10, 8, 18, 12, 11	Good		
152	Cook pine (<i>Araucaria columnaris</i>)	1	14	14	45	4, 1, 1, 2, 12, 13, 9, 8	Good		
153	Jacaranda (<i>Jacaranda mimosifolia</i>)	1	22	22	45	10, 10, 13, 11, 26, 9, 7, 12	Fair		small cavity on trunk, sparse canopy
154	Jacaranda (<i>Jacaranda mimosifolia</i>)	1	23.5	23.5	60	18, 15, 17, 22, 22, 21, 14, 22	Good		
155	Jacaranda (<i>Jacaranda mimosifolia</i>)	1	20	20	40	9, 10, 7, 7, 13, 12, 16, 10	Fair		galls and cavity on trunk
156	Jacaranda (<i>Jacaranda mimosifolia</i>)	1	23	23	60	18, 21, 18, 23, 26, 24, 24, 24	Good		
157	Jacaranda (<i>Jacaranda mimosifolia</i>)	1	23	23	45	14, 12, 7, 19, 23, 23, 23, 20	Good		
158	Mondell pine (<i>Pinus eldarica</i>)	1	10	10	25	6, 6, 6, 6, 6, 6, 6, 6	Fair		inner canopy necrosis
159	Mondell pine (<i>Pinus eldarica</i>)	1	10	10	15	6, 5, 5, 5, 5, 6, 5, 6	Good		
160	Mondell pine (<i>Pinus eldarica</i>)	1	11.5	11.5	20	10, 7, 7, 5, 7, 5, 5, 9	Fair		inner canopy necrosis
161	Mondell pine (<i>Pinus eldarica</i>)	1	10	10	12	6, 5, 6, 5, 6, 5, 5, 6	Good		
162	Mondell pine (<i>Pinus eldarica</i>)	1	10.5	10.5	20	10, 8, 6, 6, 6, 6, 9, 9	Fair		inner canopy necrosis
163	Mondell pine (<i>Pinus eldarica</i>)	1	10	10	15	6, 6, 6, 6, 6, 6, 6, 6	Good		mechanical damage to trunk
164	Jacaranda (<i>Jacaranda mimosifolia</i>)	1	23	23	55	15, 18, 28, 24, 26, 22, 17, 3	Good		
165	Jacaranda (<i>Jacaranda mimosifolia</i>)	1	23	23	40	13, 14, 14, 14, 26, 30, 10, 10	Fair		galls on trunk, mechanical damage to trunk and roots, epicormic growth on trunk and branches
166	Jacaranda (<i>Jacaranda mimosifolia</i>)	1	17.5	17.5	55	20, 15, 7, 13, 19, 20, 27, 25	Fair		somewhat sparse canopy
167	Jacaranda (<i>Jacaranda mimosifolia</i>)	1	24	24	40	12, 10, 15, 19, 21, 21, 19, 16	Good		mechanical damage to roots, epicormic growth on branches
168	Jacaranda (<i>Jacaranda mimosifolia</i>)	1	23.5	23.5	50	12, 11, 15, 10, 22, 26, 18, 15	Good		uneven canopy
169	Jacaranda (<i>Jacaranda mimosifolia</i>)	1	24	24	60	20, 24, 21, 27, 29, 25, 25, 25	Good		some dieback
170	Jacaranda (<i>Jacaranda mimosifolia</i>)	1	18	18	45	22, 30, 24, 23, 29, 22, 4, 4	Poor		sparse canopy, heavy dieback
171	Jacaranda (<i>Jacaranda mimosifolia</i>)	1	21	21	40	11, 7, 7, 14, 18, 17, 11, 11	Fair		epicormic growth on trunk and branches
172	Jacaranda (<i>Jacaranda mimosifolia</i>)	1	23.5	23.5	40	11, 12, 24, 22, 24, 20, 20, 10	Fair	somewhat sparse canopy, epicormic growth	
173	Jacaranda (<i>Jacaranda mimosifolia</i>)	1	24	24	30	12, 17, 15, 19, 18, 18, 20, 16	Good		galls and epicormic growth on trunk

Housing Authority of the City of Los Angeles
One San Pedro Specific Plan Project

Tree ID Number	Species Name	Number of Trunks	Individual Trunk Diameters (inches)	Aggregate Trunk Diameters (inches)	Tree Height (feet)	Crown Spread (N, NE, E, SE, S, SW, W, NW)	Overall Health	Notes	Damage/Issues
174	Jacaranda (<i>Jacaranda mimosifolia</i>)	1	26.5	26.5	60	24, 17, 18, 24, 24, 24, 23, 27	Good		some epicormic growth and suckers
175	Jacaranda (<i>Jacaranda mimosifolia</i>)	1	26	26	45	21, 18, 14, 20, 27, 25, 23, 21	Good		mechanical damage to roots ,cavity on trunk
176	Jacaranda (<i>Jacaranda mimosifolia</i>)	1	18	18	40	10, 15, 13, 15, 25, 16, 21, 17	Good		
177	Jacaranda (<i>Jacaranda mimosifolia</i>)	1	19	19	30	9, 13, 12, 14, 15, 19, 20, 10	Fair		small cavity in trunk, mechanical damage to roots
178	Jacaranda (<i>Jacaranda mimosifolia</i>)	1	24.5	24.5	65	23, 22, 23, 15, 15, 23, 23, 15	Good		some dieback
179	Jacaranda (<i>Jacaranda mimosifolia</i>)	1	24	24	40	12, 12, 8, 10, 20, 21, 12, 12	Fair		epicormic growth on branches and trunk
180	Jacaranda (<i>Jacaranda mimosifolia</i>)	1	25.5	25.5	50	4, 15, 30, 30, 23, 27, 26, 6	Fair		some dieback
181	London planetree (<i>Platanus × acerifolia</i>)	1	19	19	30	6, 4, 6, 20, 20, 20, 6, 5	Fair		sooty mold, epicormic growth on trunk and branches
182	London planetree (<i>Platanus × acerifolia</i>)	1	22	22	55	18, 14, 12, 14, 20, 22, 19, 18	Fair		dieback, powdery mildew
183	London planetree (<i>Platanus × acerifolia</i>)	1	19	19	30	7, 9, 6, 10, 16, 14, 15, 10	Fair		sooty mold, epicormic growth on trunk and branches
184	London planetree (<i>Platanus × acerifolia</i>)	1	12	12	35	4, 4, 5, 11, 11, 13, 11, 9	Fair		dieback, powdery mildew
185	Gold medallion (<i>Cassia leptophylla</i>)	1	8	8	20	3, 3, 8, 10, 10, 10, 8, 4	Fair		mechanical damage to trunk, snapped branches
186	Brisbane box (<i>Lophostemon confertus</i>)	1	16	16	30	3, 7, 13, 13, 6, 4, 11, 4	Fair		uneven canopy
187	Carob (<i>Ceratonia siliqua</i>)	1	32	32	30	6, 6, 5, 6, 8, 9, 9, 6	Fair		mechanical damage to trunk and roots, branch dieback
188	Carob (<i>Ceratonia siliqua</i>)	1	38.5	38.5	35	14, 9, 7, 10, 19, 14, 10, 16	Fair		flagging, dieback, epicormic growth
189	Carob (<i>Ceratonia siliqua</i>)	1	26	26	20	6, 6, 6, 6, 6, 6, 6, 6	Poor		epicormic growth on trunk and roots, branch dieback
190	Carrotwood (<i>Cupaniopsis anacardioides</i>)	1	27.5	27.5	30	11, 8, 5, 10, 6, 12, 10, 12	Good		cavity in trunk
191	Arizona ash (<i>Fraxinus velutina</i>)	1	12	12	20	4, 5, 5, 5, 5, 5, 5, 5	Poor		epicormic growth on trunk and branches
192	Arizona ash (<i>Fraxinus velutina</i>)	1	20	20	30	4, 6, 9, 10, 10, 11, 13, 4	Fair		dieback, epicormic growth
193	Arizona ash (<i>Fraxinus velutina</i>)	1	17	17	25	5, 5, 7, 12, 13, 16, 15, 5	Poor		mechanical damage to roots
194	Carob (<i>Ceratonia siliqua</i>)	1	20	20	30	8, 8, 8, 8, 8, 8, 8, 8	Good	not tagged due to crime scene	
195	Carob (<i>Ceratonia siliqua</i>)	1	19	19	35	8, 8, 8, 8, 8, 8, 8, 8	Good	not tagged due to crime scene	
196	Carob (<i>Ceratonia siliqua</i>)	1	25	25	30	4, 4, 9, 15, 15, 15, 10, 9	Poor		trunk hollowed all the way through
197	Carob (<i>Ceratonia siliqua</i>)	1	43	43	45	11, 11, 14, 14, 12, 16, 21, 19	Good		some cavities on trunk
198	Carob (<i>Ceratonia siliqua</i>)	1	28	28	25	8, 11, 10, 9, 8, 14, 9, 12	Fair		epicormic growth on trunk and branches

Tree ID Number	Species Name	Number of Trunks	Individual Trunk Diameters (inches)	Aggregate Trunk Diameters (inches)	Tree Height (feet)	Crown Spread (N, NE, E, SE, S, SW, W, NW)	Overall Health	Notes	Damage/Issues
199	Arizona ash (<i>Fraxinus velutina</i>)	1	11.5	11.5	30	13, 11, 5, 1, 1, 1, 3, 10	Fair		chlorosis
200	Arizona ash (<i>Fraxinus velutina</i>)	1	12	12	20	7, 7, 7, 7, 7, 7, 7	Fair		epicormic growth on trunk and branches
201	Arizona ash (<i>Fraxinus velutina</i>)	1	13	13	25	3, 5, 9, 9, 9, 11, 13, 5	Fair		chlorosis, epicormic growth
202	Jacaranda (<i>Jacaranda mimosifolia</i>)	1	29	29	42	12, 12, 14, 7, 6, 9, 21, 28	Fair		previously trimmed for utility clearance, epicormic growth on branches
203	Jacaranda (<i>Jacaranda mimosifolia</i>)	1	25	25	50	15, 24, 23, 11, 7, 15, 21, 19	Fair		previously pruned
204	Mexican fan palm (<i>Washingtonia robusta</i>)	1	20	20	24	5, 5, 5, 5, 5, 5, 5	Fair		eroded roots
205	Jacaranda (<i>Jacaranda mimosifolia</i>)	1	24	24	35	18, 14, 16, 19, 19, 23, 23, 23	Poor		sparse canopy dieback. previously topped
206	Jacaranda (<i>Jacaranda mimosifolia</i>)	1	19	19	25	14, 10, 7, 8, 7, 8, 8, 9	Poor		galls on trunk, crown dieback, epicormic growth on trunk
207	Jacaranda (<i>Jacaranda mimosifolia</i>)	1	23	23	60	23, 22, 23, 22, 30, 26, 22, 21	Fair		some dieback, somewhat sparse
208	Jacaranda (<i>Jacaranda mimosifolia</i>)	1	26	26	35	20, 20, 22, 24, 22, 22, 22, 22	Good		twig dieback, trunk gall at base
209	Jacaranda (<i>Jacaranda mimosifolia</i>)	1	27.5	27.5	60	15, 21, 25, 26, 20, 23, 24, 26	Fair		dieback, previously pruned
210	Jacaranda (<i>Jacaranda mimosifolia</i>)	1	23	23	35	15, 18, 20, 15, 15, 15, 14, 18	Good		mechanical damage to roots, twig dieback, epicormic growth on branches
211	Chinese elm (<i>Ulmus parvifolia</i>)	1	18.5	18.5	30	1, 1, 41, 15, 24, 30, 31, 27	Fair		somewhat sparse
212	Chinese elm (<i>Ulmus parvifolia</i>)	1	22	22	25	15, 12, 15, 20, 21, 22, 18, 15	Good		gummosis on trunk
213	Chinese elm (<i>Ulmus parvifolia</i>)	1	20	20	45	19, 18, 16, 21, 18, 26, 23, 26	Fair		somewhat sparse
214	Chinese elm (<i>Ulmus parvifolia</i>)	1	18	18	35	7, 16, 19, 18, 14, 12, 23, 14	Poor		mechanical damage to trunk and roots, epicormic growth on trunk and branches, leaf chlorosis
215	Jacaranda (<i>Jacaranda mimosifolia</i>)	1	27.5	27.5	50	22, 21, 17, 23, 27, 27, 25, 27	Good		previously pruned
216	Jacaranda (<i>Jacaranda mimosifolia</i>)	1	23	23	35	12, 12, 15, 15, 20, 17, 20, 14	Fair		twig dieback, mechanical damage to roots, epicormic growth on trunk
217	Jacaranda (<i>Jacaranda mimosifolia</i>)	1	26.5	26.5	55	19, 21, 23, 21, 25, 21, 23, 20	Good		some dieback and epicormic growth. previously pruned
218	Jacaranda (<i>Jacaranda mimosifolia</i>)	1	20	20	40	16, 17, 21, 19, 17, 19, 22, 20	Good		some dieback

¹ For tree ID numbers that were duplicated due to tagging errors, the letter "a" was attached to duplicate tree ID numbers for differentiation.

This page intentionally left blank.

Appendix B

Tree Photograph Log



Photograph 1. Tree number 1. Gold Medallion.



Photograph 2. Tree number 2. Gold Medallion.



Photograph 3. Tree number 3. Gold medallion.



Photograph 4. Tree number 4. Gold Medallion.

Housing Authority of the City of Los Angeles
One San Pedro Specific Plan Project



Photograph 5. Tree number 5. Gold medallion.



Photograph 6. Tree number 6. Gold medallion.



Photograph 7. Tree number 7. Gold medallion.



Photograph 8. Tree number 8. Mimosa.



Photograph 9. Tree number 9. Mimosa.



Photograph 10. Tree number 10. Mimosa.



Photograph 11. Tree number 11. Strawberry madrone.



Photograph 12. Tree number 12. Carob.

Housing Authority of the City of Los Angeles
One San Pedro Specific Plan Project



Photograph 13. Tree number 13. Floss silk.



Photograph 14. Tree number 14. Carob.



Photograph 15. Tree number 15. Jacaranda.



Photograph 16. Tree number 16. Jacaranda.



Photograph 17. Tree number 17. Jacaranda.



Photograph 18. Tree number 18. Jacaranda.



Photograph 19. Tree number 19. Chinese elm.



Photograph 20. Tree number 20. Chinese elm.

Housing Authority of the City of Los Angeles
One San Pedro Specific Plan Project



Photograph 21. Tree number 21. Chinese elm.



Photograph 22. Tree number 22. Jacaranda.



Photograph 23. Tree number 23. Brisbane box.



Photograph 24. Tree number 24. London planetree.



Photograph 25. Tree number 25. Brisbane box.



Photograph 26. Tree number 26. Jacaranda.



Photograph 27. Tree number 27. Jacaranda.



Photograph 28. Tree number 28. Chinese elm.



Photograph 29. Tree number 29. Brisbane box.



Photograph 30. Tree number 30. Jacaranda.



Photograph 31. Tree number 31. Jacaranda.



Photograph 32. Tree number 32. Brisbane box.



Photograph 33. Tree number 33. Mondell pine.



Photograph 34. Tree number 34. Chinese elm.



Photograph 35. Tree number 35. Chinese elm.



Photograph 36. Tree number 36. Chinese elm.

Housing Authority of the City of Los Angeles
One San Pedro Specific Plan Project



Photograph 37. Tree number 37. Brisbane box.



Photograph 38. Tree number 38. Jacaranda.



Photograph 39. Tree number 39. Olive.



Photograph 40. Tree number 40. Jacaranda.



Photograph 41. Tree number 41. Jacaranda.



Photograph 42. Tree number 42. Jacaranda.



Photograph 43. Tree number 43. Olive.



Photograph 44. Tree number 44. Jacaranda.



Photograph 45. Tree number 45. Jacaranda.



Photograph 46. Tree number 46. Jacaranda.



Photograph 47. Tree number 47. Jacaranda.



Photograph 48. Tree number 48. Jacaranda.



Photograph 49. Tree number 49. Jacaranda.



Photograph 50. Tree number 50. Arizona ash.



Photograph 51. Tree number 51. Carob.



Photograph 52. Tree number 52. Carob.

Housing Authority of the City of Los Angeles
One San Pedro Specific Plan Project



Photograph 53. Tree number 53. Chinese elm.



Photograph 54. Tree number 54. Carob.



Photograph 55. Tree number 55. Chinese elm.



Photograph 56. Tree number 56. Carob.



Photograph 57. Tree number 57. Mexican fan palm.



Photograph 58. Tree number 58. Carob.



Photograph 59. Tree number 59. Mexican fan palm.



Photograph 60. Tree number 60. Carob.

Housing Authority of the City of Los Angeles
One San Pedro Specific Plan Project



Photograph 61. Tree number 61. Mexican fan palm.



Photograph 62. Tree number 62. Carob.



Photograph 63. Tree number 63. Jacaranda.



Photograph 64. Tree number 64. Carob.



Photograph 65. Tree number 65. Carob.



Photograph 66. Tree number 66. Carob.



Photograph 67. Tree number 67. Jacaranda.



Photograph 68. Tree number 68. Carob.



Photograph 69. Tree number 69. Shamel ash.



Photograph 70. Tree number 70. Jacaranda.



Photograph 71. Tree number 71. Jacaranda.



Photograph 72. Tree number 72. Weeping fig.



Photograph 73. Tree number 73. Jacaranda.



Photograph 74. Tree number 74. Southern magnolia.



Photograph 75. Tree number 75. Siberian elm.



Photograph 76. Tree number 76. Jacaranda.

Housing Authority of the City of Los Angeles
One San Pedro Specific Plan Project



Photograph 77. Tree number 77. Siberian elm.



Photograph 78. Tree number 78. Brisbane box.



Photograph 79. Tree number 79. Weeping fig.



Photograph 80. Tree number 80. Brisbane box.



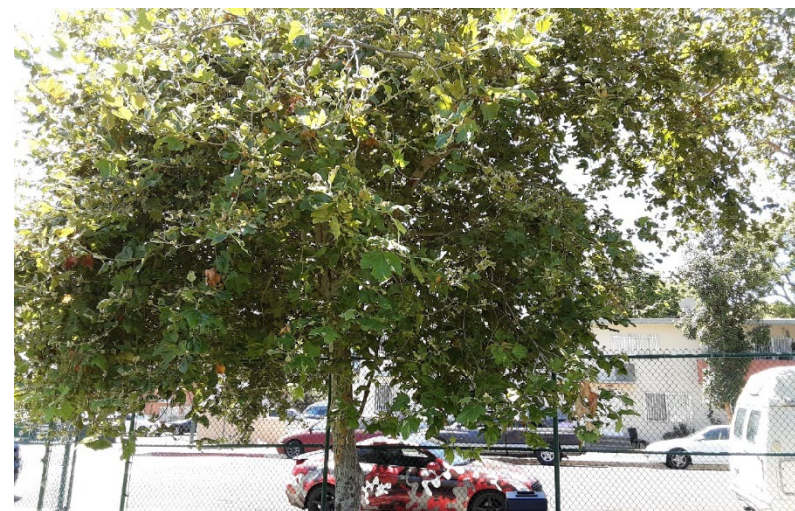
Photograph 81. Tree number 81. Carob.



Photograph 82. Tree number 82. Jacaranda.



Photograph 83. Tree number 83. Carob.



Photograph 84. Tree number 84. London planetree.



Photograph 85. Tree number 85. London planetree.



Photograph 86. Tree number 86. London planetree.



Photograph 87. Tree number 87. London planetree.



Photograph 88. Tree number 88. London planetree.



Photograph 89. Tree number 89. Coast live oak.



Photograph 90. Tree number 90. Indian coral tree.



Photograph 91. Tree number 91. Mexican fan palm.



Photograph 92. Tree number 92. Pygmy date palm.



Photograph 93. Tree number 93. Mexican fan palm.



Photograph 94. Tree number 94. Jacaranda.



Photograph 95. Tree number 95. King palm.



Photograph 96. Tree number 96. King palm.



Photograph 97. Tree number 97. King palm.



Photograph 98. Tree number 98. King palm.



Photograph 99. Tree number 99. Brisbane box.



Photograph 100. Tree number 100. Jacaranda.



Photograph 101. Tree number 101. Jacaranda.



Photograph 102. Tree number 102. Jacaranda.



Photograph 103. Tree number 103. Umbrella tree.



Photograph 104. Tree number 104. Jacaranda.



Photograph 105. Tree number 105. Western Australian peppermint.



Photograph 106. Tree number 106. Western Australian peppermint.



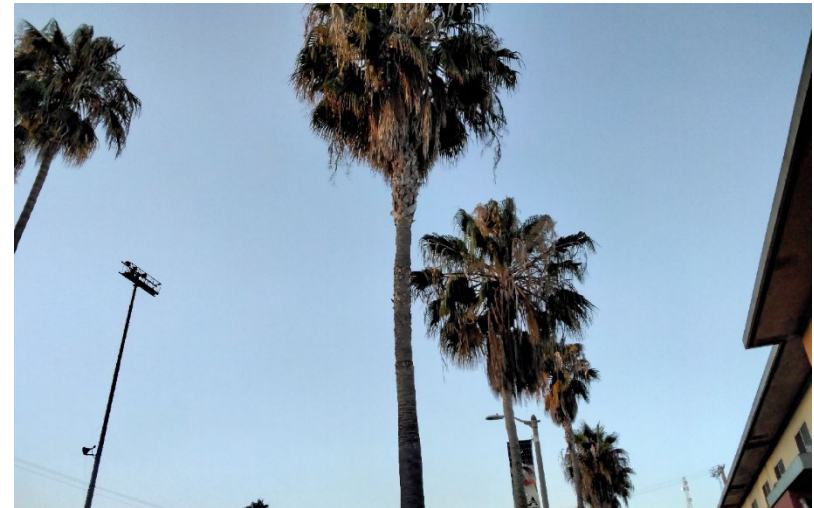
Photograph 107. Tree number 107. Carob.



Photograph 108. Tree number 107a. Jacaranda.



Photograph 109. Tree number 108. Brisbane box.



Photograph 110. Tree number 109. Mexican fan palm.



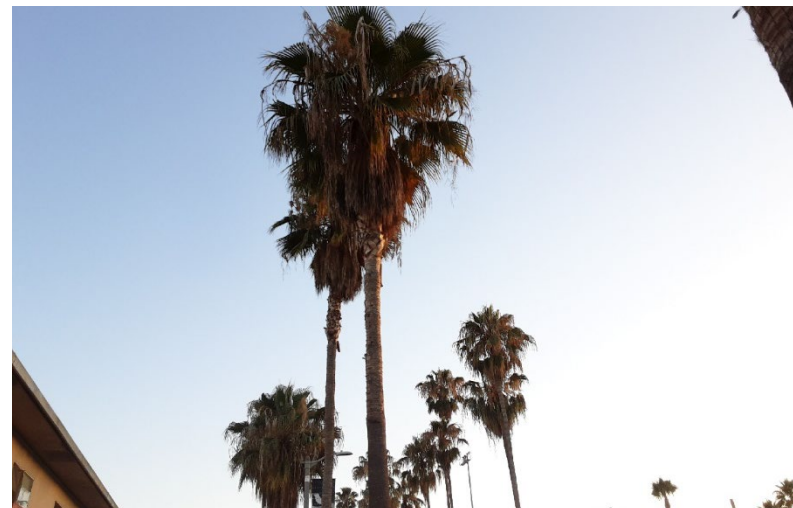
Photograph 111. Tree number 110. Jacaranda.



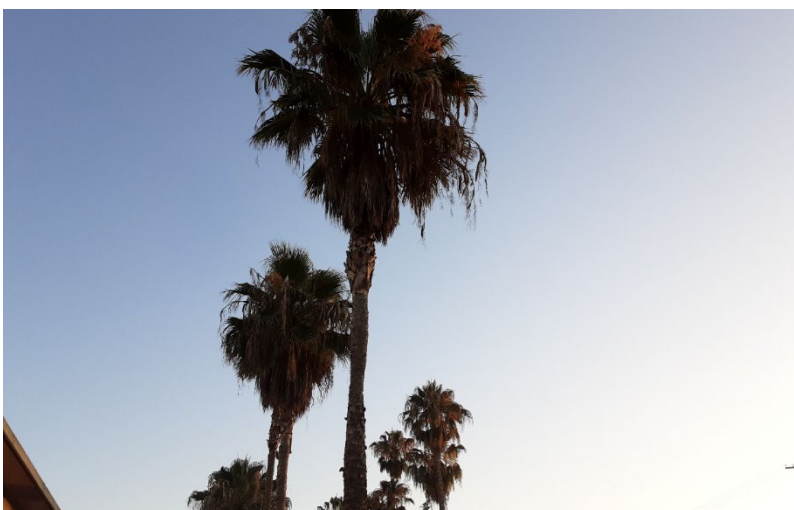
Photograph 112. Tree number 110a. Mexican fan palm.



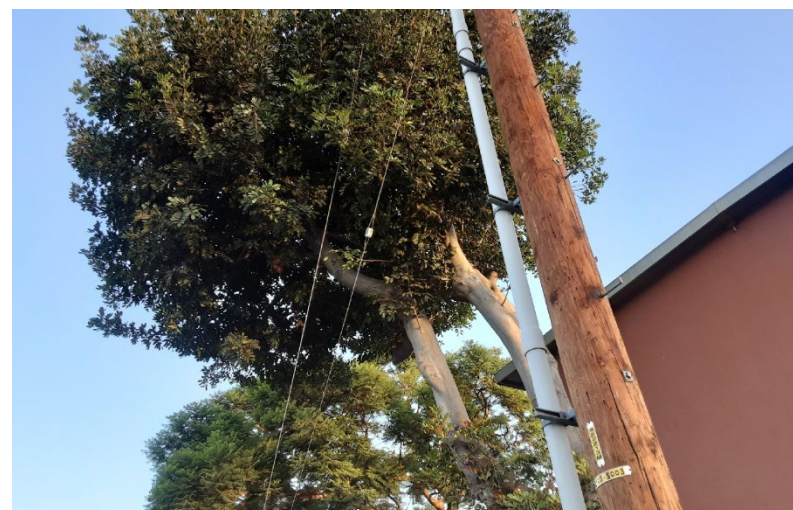
Photograph 113. Tree number 111. Mexican fan palm.



Photograph 114. Tree number 112. Mexican fan palm.



Photograph 115. Tree number 113. Mexican fan palm.



Photograph 116. Tree number 114. Carrotwood.

Housing Authority of the City of Los Angeles
One San Pedro Specific Plan Project



Photograph 117. Tree number 115. Jacaranda.



Photograph 118. Tree number 116. Arizona ash.



Photograph 119. Tree number 117. Carob.



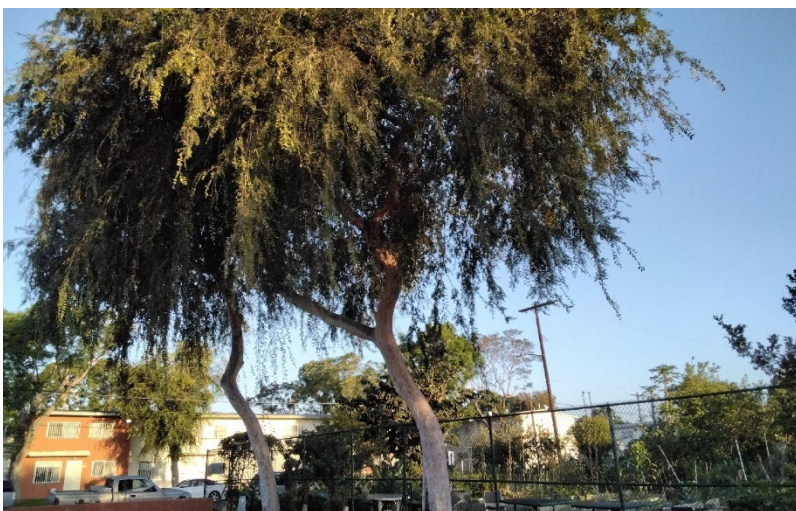
Photograph 120. Tree number 118. Jacaranda.



Photograph 121. Tree number 119. Carob.



Photograph 122. Tree number 120. Chinese elm.



Photograph 123. Tree number 121. Chinese elm.



Photograph 124. Tree number 122. Jacaranda.

Housing Authority of the City of Los Angeles
One San Pedro Specific Plan Project



Photograph 125. Tree number 123. Chinese elm.



Photograph 126. Tree number 124. Chinese elm.



Photograph 127. Tree number 125. Jacaranda.



Photograph 128. Tree number 126. Chinese elm.



Photograph 129. Tree number 127. Chinese elm.



Photograph 130. Tree number 128. Jacaranda.



Photograph 131. Tree number 129. Jacaranda.



Photograph 132. Tree number 130. Jacaranda.

Housing Authority of the City of Los Angeles
One San Pedro Specific Plan Project



Photograph 133. Tree number 131. Siberian elm.



Photograph 134. Tree number 132. Siberian elm.



Photograph 135. Tree number 133. Jacaranda.



Photograph 136. Tree number 134. Chinese elm.



Photograph 137. Tree number 135. Brisbane box.



Photograph 138. Tree number 136. Brisbane box.



Photograph 139. Tree number 137. Chinese elm.



Photograph 140. Tree number 138. Chinese elm.

Housing Authority of the City of Los Angeles
One San Pedro Specific Plan Project



Photograph 141. Tree number 139. Chinese elm.



Photograph 142. Tree number 140. Chinese elm.



Photograph 143. Tree number 141. Brisbane box.



Photograph 144. Tree number 142. Brisbane box.



Photograph 145. Tree number 143. Chinese elm.



Photograph 146. Tree number 144. Carrotwood.



Photograph 147. Tree number 145. Carrotwood.



Photograph 148. Tree number 146. Carrotwood.



Photograph 149. Tree number 147. Carrotwood.



Photograph 150. Tree number 148. Carrotwood.



Photograph 151. Tree number 149. Carrotwood.



Photograph 152. Tree number 150. Mondell pine.



Photograph 153. Tree number 151. Brisbane box.



Photograph 154. Tree number 152. Cook pine.



Photograph 155. Tree number 153. Jacaranda.



Photograph 156. Tree number 154. Jacaranda.



Photograph 157. Tree number 155. Jacaranda.



Photograph 158. Tree number 156. Jacaranda.



Photograph 159. Tree number 157. Jacaranda.



Photograph 160. Tree number 158. Mondell pine.



Photograph 161. Tree number 159. Mondell pine.



Photograph 162. Tree number 160. Mondell pine.



Photograph 163. Tree number 161. Mondell pine.



Photograph 164. Tree number 162. Mondell pine.

Housing Authority of the City of Los Angeles
One San Pedro Specific Plan Project



Photograph 165. Tree number 163. Mondell pine.



Photograph 166. Tree number 164. Jacaranda.



Photograph 167. Tree number 165. Jacaranda.



Photograph 168. Tree number 166. Jacaranda.



Photograph 169. Tree number 167. Jacaranda.



Photograph 170. Tree number 168. Jacaranda.

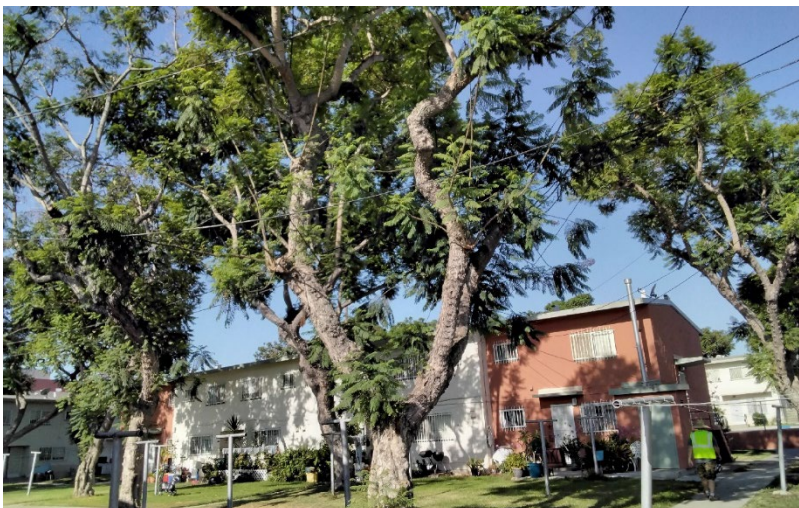


Photograph 171. Tree number 169. Jacaranda.

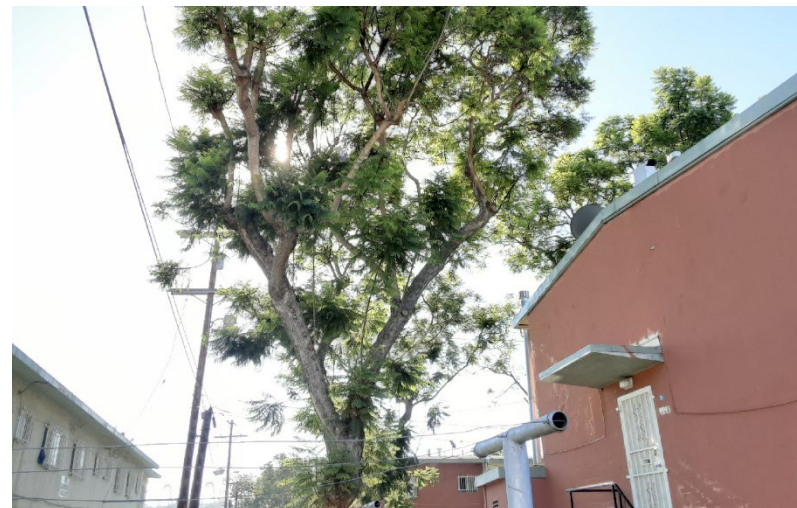


Photograph 172. Tree number 170. Jacaranda.

Housing Authority of the City of Los Angeles
One San Pedro Specific Plan Project



Photograph 173. Tree number 171. Jacaranda.



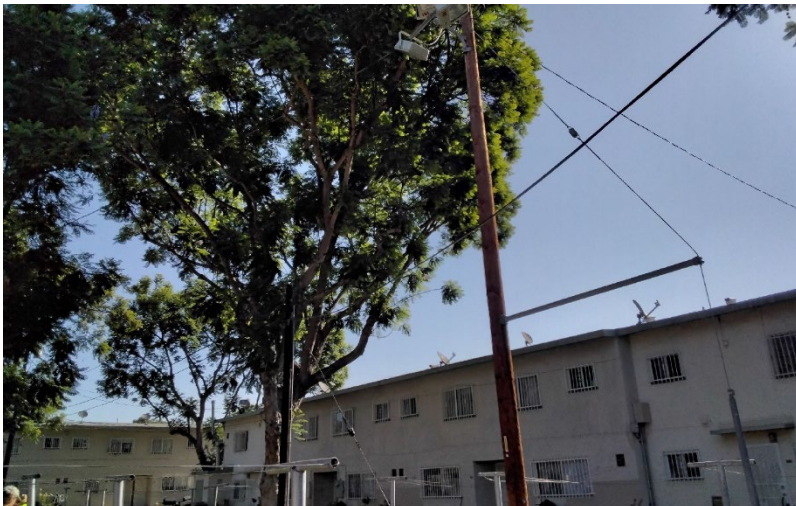
Photograph 174. Tree number 172. Jacaranda.



Photograph 175. Tree number 173. Jacaranda.



Photograph 176. Tree number 174. Jacaranda.



Photograph 177. Tree number 175. Jacaranda.



Photograph 178. Tree number 176. Jacaranda.



Photograph 179. Tree number 177. Jacaranda.



Photograph 180. Tree number 178. Jacaranda.



Photograph 181. Tree number 179. Jacaranda.



Photograph 182. Tree number 180. Jacaranda.



Photograph 183. Tree number 181. London planetree.



Photograph 184. Tree number 182. London planetree.



Photograph 185. Tree number 183. London planetree.



Photograph 186. Tree number 184. London planetree.



Photograph 187. Tree number 185. Jacaranda.



Photograph 188. Tree number 186. Brisbane box.

Housing Authority of the City of Los Angeles
One San Pedro Specific Plan Project



Photograph 189. Tree number 187. Carob.



Photograph 190. Tree number 188. Carob.



Photograph 191. Tree number 189. Carob.



Photograph 192. Tree number 190. Carrotwood.



Photograph 193. Tree number 191. Arizona ash.



Photograph 194. Tree number 192. Arizona ash.



Photograph 195. Tree number 193. Arizona ash.



Photograph 196. Tree number 194. Carob.

Housing Authority of the City of Los Angeles
One San Pedro Specific Plan Project



Photograph 197. Tree number 195. Carob.



Photograph 198. Tree number 196. Carob.



Photograph 199. Tree number 197. Carob.



Photograph 200. Tree number 198. Carob.



Photograph 201. Tree number 199. Arizona ash.



Photograph 202. Tree number 200. Arizona ash.



Photograph 203. Tree number 201. Arizona ash.



Photograph 204. Tree number 202. Jacaranda.



Photograph 205. Tree number 203. Jacaranda.



Photograph 206. Tree number 204. Mexican fan palm.



Photograph 207. Tree number 205. Jacaranda.



Photograph 208. Tree number 206. Jacaranda.



Photograph 209. Tree number 207. Jacaranda.



Photograph 210. Tree number 208. Jacaranda.



Photograph 211. Tree number 209. Jacaranda.



Photograph 212. Tree number 210. Jacaranda.

Housing Authority of the City of Los Angeles
One San Pedro Specific Plan Project



Photograph 213. Tree number 211. Chinese elm.



Photograph 214. Tree number 212. Chinese elm.



Photograph 215. Tree number 213. Chinese elm.



Photograph 216. Tree number 214. Chinese elm.



Photograph 217. Tree number 215. Jacaranda.



Photograph 218. Tree number 216. Jacaranda.



Photograph 219. Tree number 217. Jacaranda.



Photograph 220. Tree number 218. Jacaranda.

This page intentionally left blank.