

- County Clerk
- Interested Parties

**COUNTY OF LAKE
NOTICE OF INTENT
TO ADOPT A MITIGATED NEGATIVE DECLARATION**

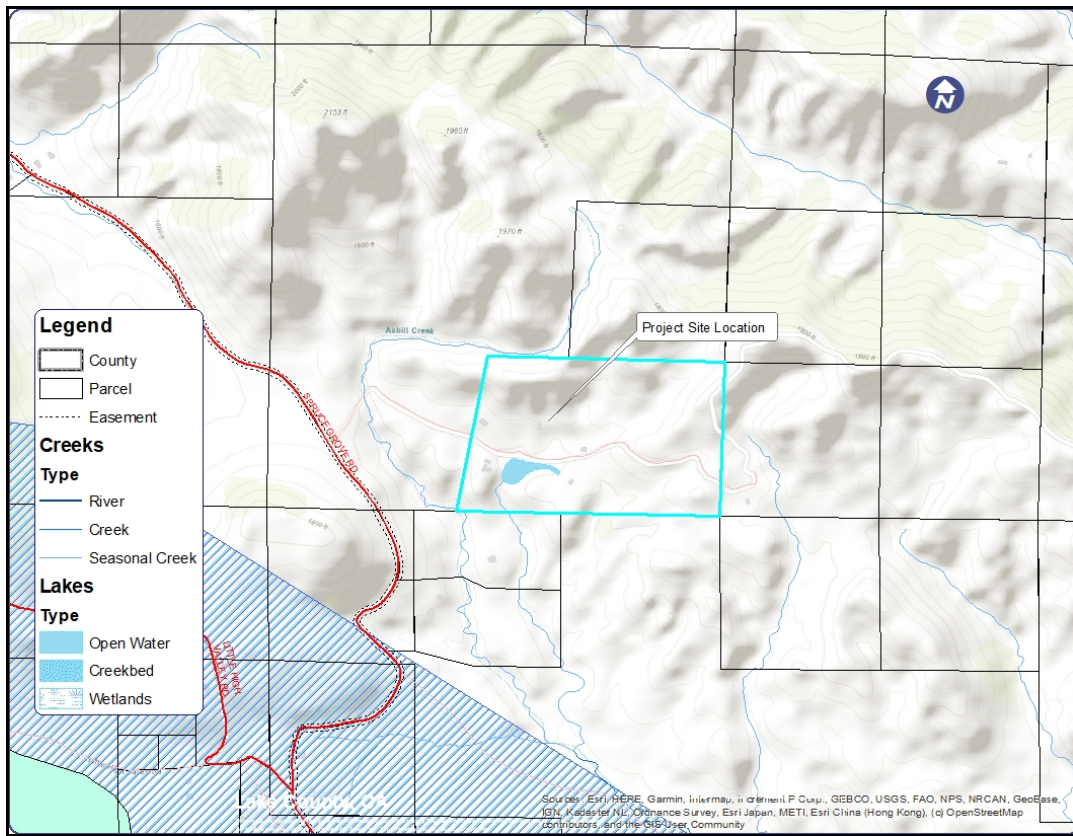
Project Title: Alvarez Farms; Major Use Permit (UP 20-03); Initial Study (IS 20-02)

Project Location: 12990 Spruce Grove Road, Lower Lake, CA

APN No.: 012-067-40

Project Description: The project site location will take place on 12990 Spruce Grove Road, Lower Lake, CA (APN: 012-067-40). The 65.08 acres parcel property designated zoning is rural lands used for single-family residences and agricultural uses such as crop farming and livestock grazing. The proposed cultivation area will take place in four site locations totaling up to 3.6 acres with 131,000 square feet of the canopy area and include indoor cultivation within a 600 square feet metal building with a total canopy area of 500 square feet. This project proposes several site improvements to ensure that the cultivation site meets all local and state regulations and guidelines. The proposed improvements consist of a security fence, security system, employee parking, trash bins, storage sheds, portable toilets, etc. Plants are to be planted in planter beds upon use permit approval. Each cultivation site was chosen in currently disturbed areas such as existing gardens, pig enclosure, and within existing structures. The proposal may adversely impact the environment due to significant changes, however, with mitigation measures implemented, the project will be to less than significant impact.

The public review period for the respective proposed Mitigated Negative Declaration based on Initial Study IS 20-02 will begin on February 8, 2021, and end on March 15, 2021. You are encouraged to submit written comments regarding the proposed Mitigated Negative Declaration. You may do so by submitting written comments to the Planning Division prior to the end of the review period. Copies of the application, environmental documents, and all reference documents associated with the project are available for review through the **Community Development Department, Planning Division; telephone (707) 263-2221**. Written comments may be submitted to the Planning Division or via email at sateur.ham@lakecountyca.gov.



Vicinity Map of Alvarez Farm's Cannabis Cultivation Project