



## 11.1G Noise Analysis

---



<b>Site Number:</b> 1			
<b>Recorded By:</b> Eddie Torres			
<b>Job Number:</b> 179033			
<b>Date:</b> June 30, 2020			
<b>Time:</b> 8:50 am			
<b>Location:</b> 141 Kenwood Street			
<b>Source of Peak Noise:</b> traffic noise			
Noise Data			
<b>Leq (dB)</b>	<b>Lmax(dB)</b>	<b>Lmin (dB)</b>	<b>Peak (dB)</b>
55.3	67.1	51.8	92.3

Equipment						
Category	Type	Vendor	Model	Serial No.	Cert. Date	Note
Sound	Sound Level Meter	Brüel & Kjær	2250	3011133	04/08/2019	
	Microphone	Brüel & Kjær	4189	3086765	04/08/2019	
	Preamp	Brüel & Kjær	ZC 0032	25380	04/08/2019	
	Calibrator	Brüel & Kjær	4231	2545667	04/08/2019	
Weather Data						
Est.	<b>Duration:</b> 10 minutes			<b>Sky:</b> clear		
	<b>Note:</b> dBA Offset =			<b>Sensor Height (ft):</b> 5 ft		
	<b>Wind Ave Speed (mph / m/s)</b>		<b>Temperature (degrees Fahrenheit)</b>		<b>Barometer Pressure (inches)</b>	
	1.8		73.1		56.3	

**Photo of Measurement Location**



2250

Instrument:		2250
Application:		BZ7225 Version 4.7.4
Start Time:		06/30/2020 08:49:02
End Time:		06/30/2020 08:59:02
Elapsed Time:		00:10:00
Bandwidth:		1/3-octave
Max Input Level:		142.09

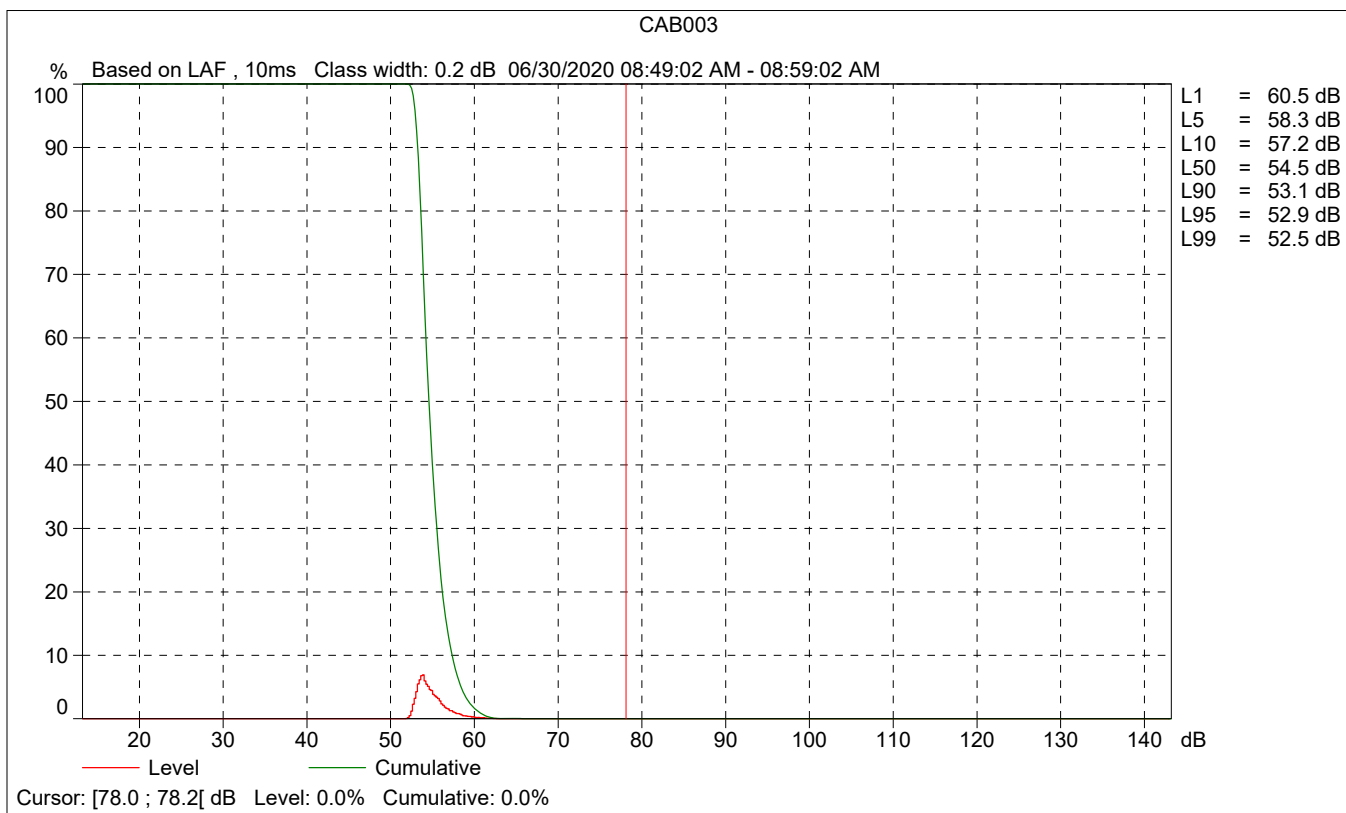
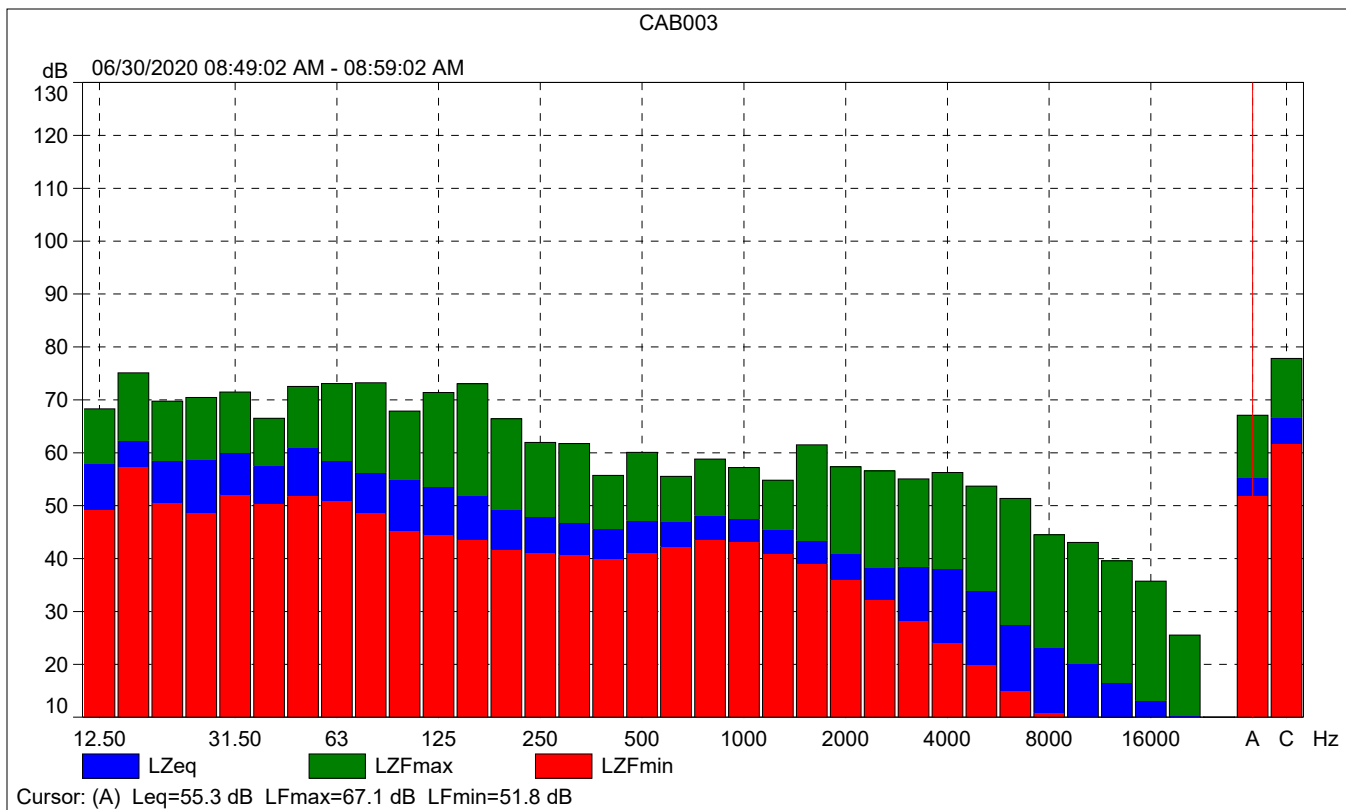
	Time	Frequency
Broadband (excl. Peak):	FSI	AC
Broadband Peak:		C
Spectrum:	FS	Z

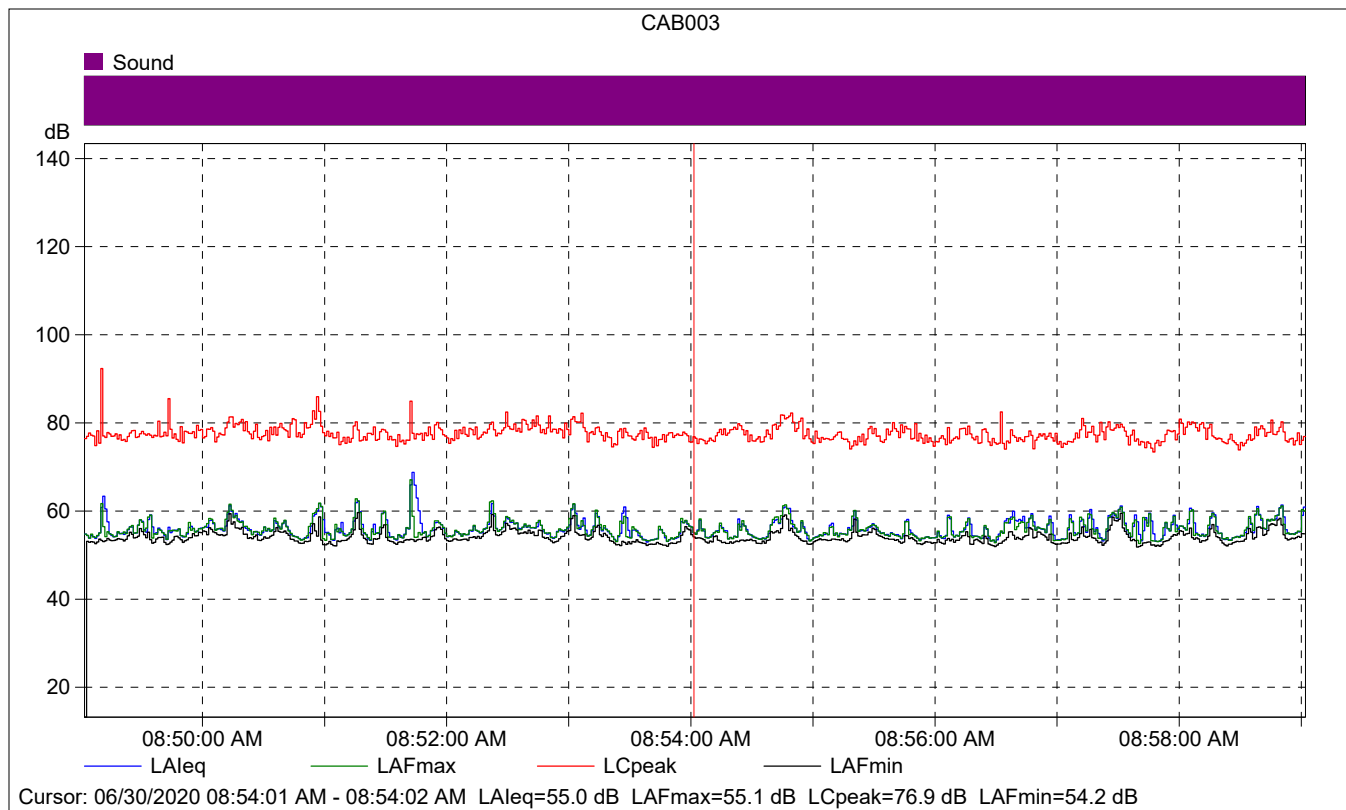
Instrument Serial Number:		3011133
Microphone Serial Number:		3086765
Input:		Top Socket
Windscreen Correction:		UA-1650
Sound Field Correction:		Free-field

Calibration Time:		03/04/2020 16:07:16
Calibration Type:		External reference
Sensitivity:		43.8021086156368 mV/Pa

CAB003

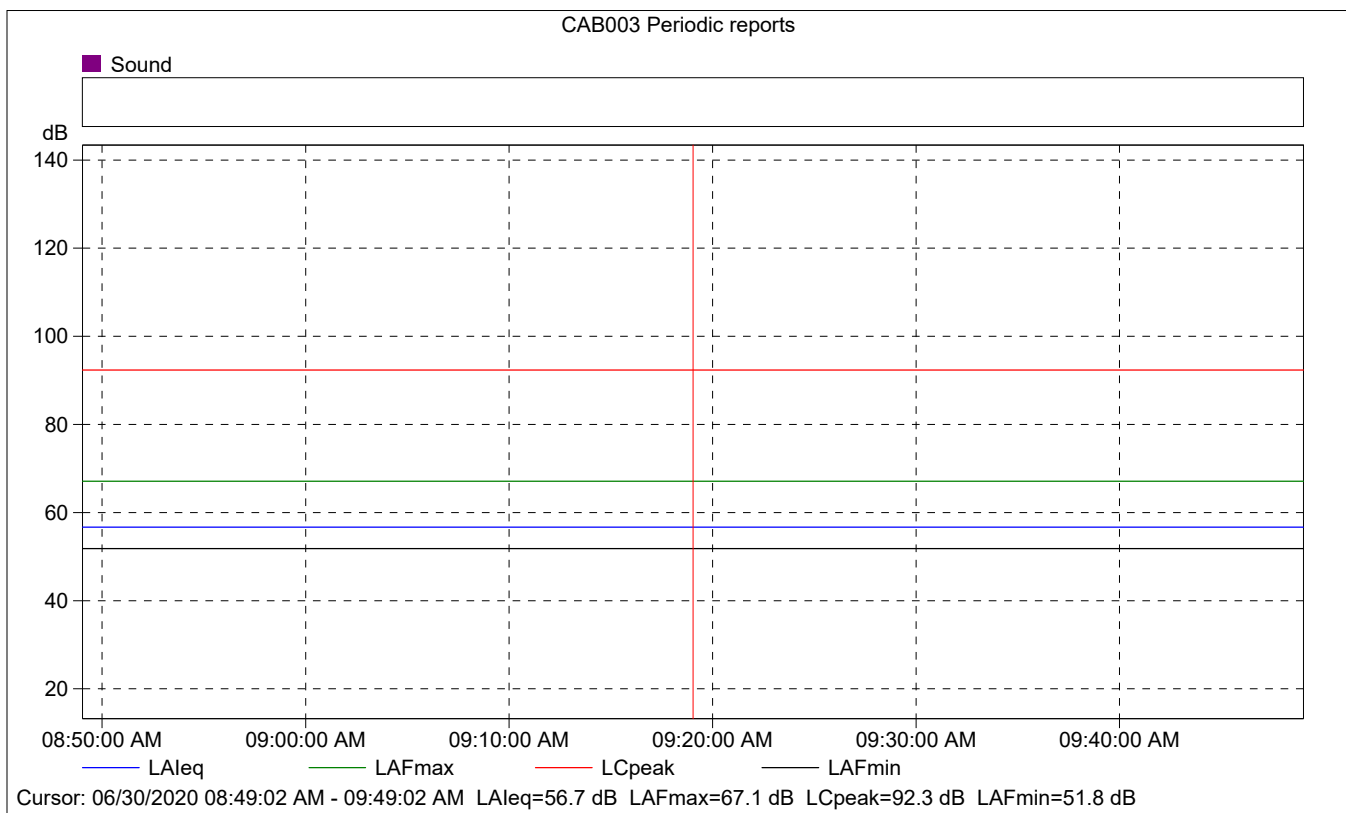
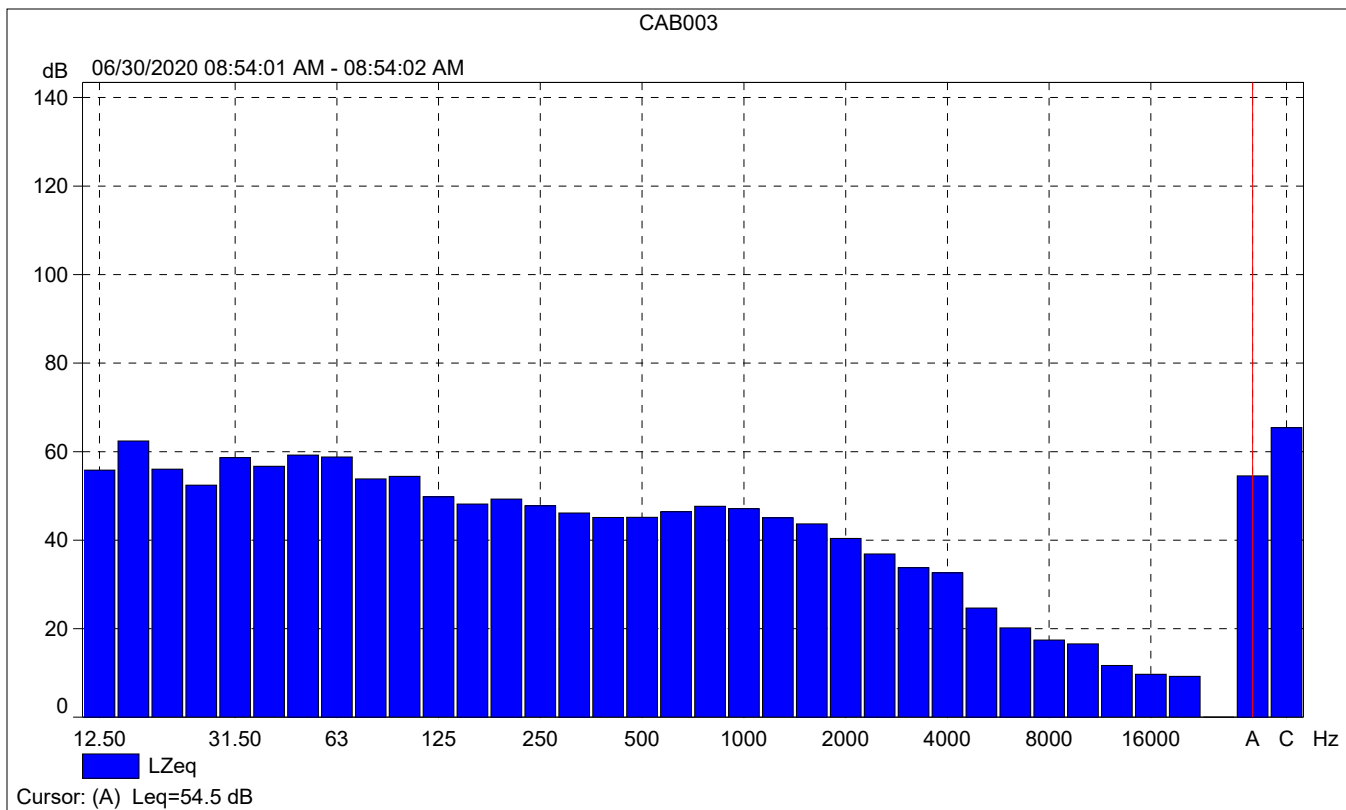
	Start time	End time	Elapsed time	Overload [%]	LAeq [dB]	LAFmax [dB]	LAFmin [dB]
Value				0.00	55.3	67.1	51.8
Time	08:49:02 AM	08:59:02 AM	0:10:00				
Date	06/30/2020	06/30/2020					





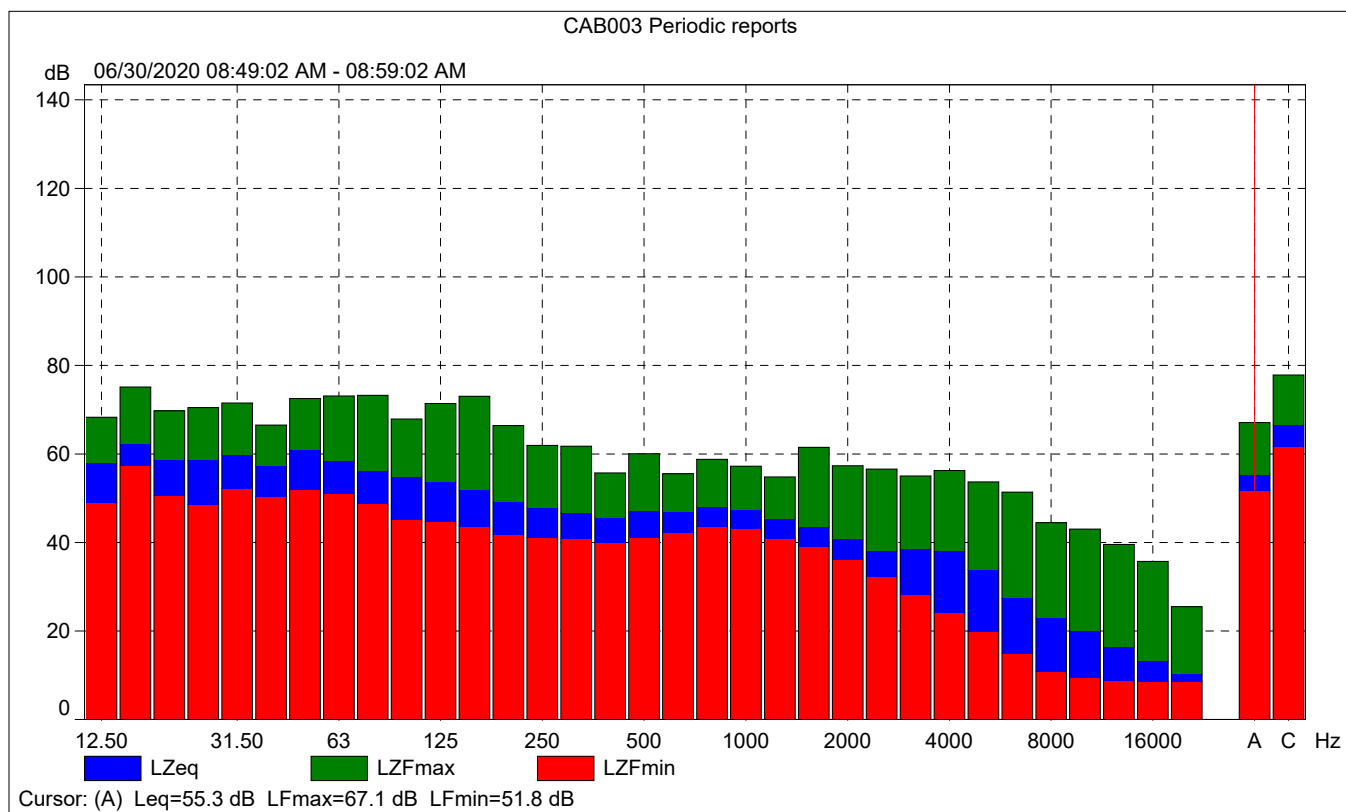
### CAB003

	Start time	Elapsed time	LAeq [dB]	LAFmax [dB]	LAFmin [dB]
Value			55.0	55.1	54.2
Time	08:54:01 AM	0:00:01			
Date	06/30/2020				



# CAB003 Periodic reports

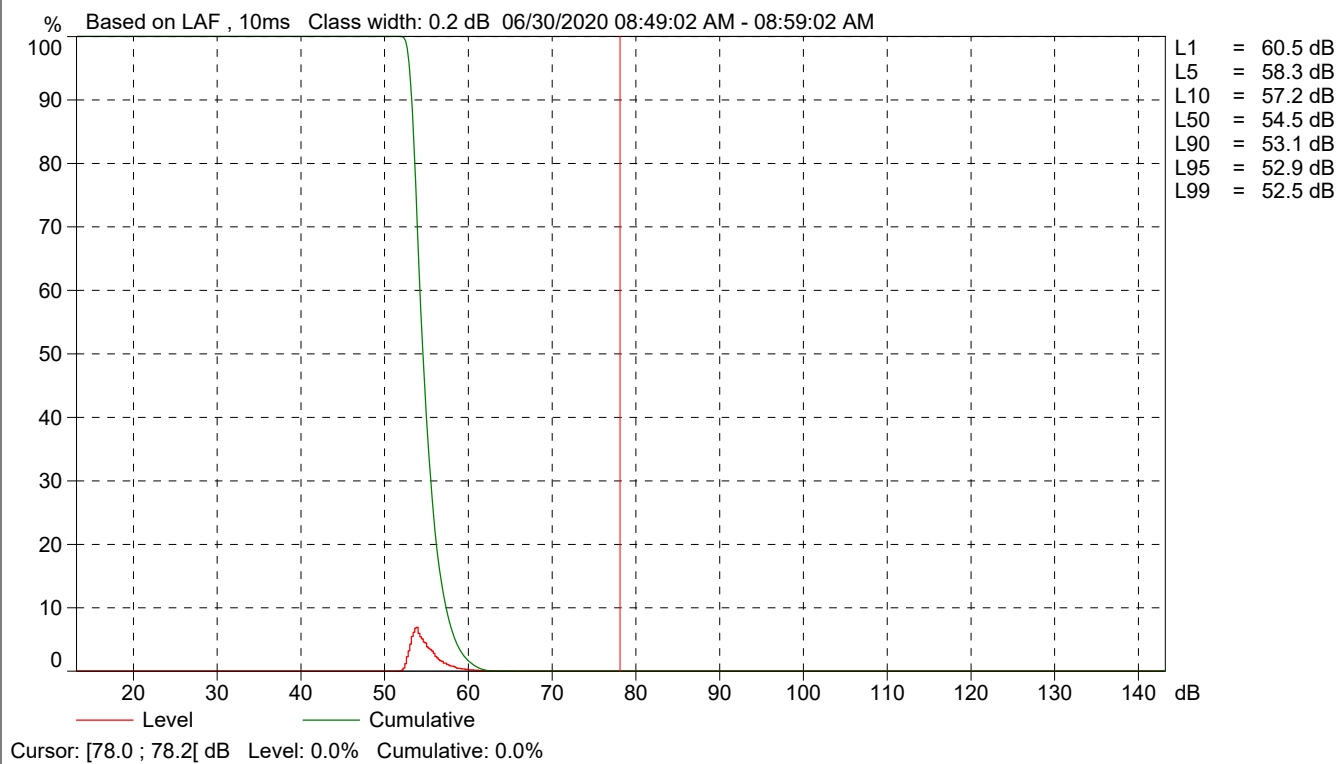
	Start time	Elapsed time	Overload [%]	LALeq [dB]	LAFmax [dB]	LAFmin [dB]
Value			0.00	56.7	67.1	51.8
Time	08:49:02 AM	0:10:00				
Date	06/30/2020					







CAB003 Periodic reports



<b>Site Number:</b> 2			
<b>Recorded By:</b> Eddie Torres			
<b>Job Number:</b> 179033			
<b>Date:</b> June 30, 2020			
<b>Time:</b> 9:06 am			
<b>Location:</b> Daycare adjacent to site – 115 North Hollywood Way			
<b>Source of Peak Noise:</b> traffic noise			
Noise Data			
<b>Leq (dB)</b>	<b>Lmax(dB)</b>	<b>Lmin (dB)</b>	<b>Peak (dB)</b>
66.5	83.4	57.1	99.5

Equipment						
Category	Type	Vendor	Model	Serial No.	Cert. Date	Note
Sound	Sound Level Meter	Brüel & Kjær	2250	3011133	04/08/2019	
	Microphone	Brüel & Kjær	4189	3086765	04/08/2019	
	Preamp	Brüel & Kjær	ZC 0032	25380	04/08/2019	
	Calibrator	Brüel & Kjær	4231	2545667	04/08/2019	
Weather Data						
Est.	<b>Duration:</b> 10 minutes			<b>Sky:</b> clear		
	<b>Note:</b> dBA Offset =			<b>Sensor Height (ft):</b> 5 ft		
	<b>Wind Ave Speed (mph / m/s)</b>		<b>Temperature (degrees Fahrenheit)</b>		<b>Barometer Pressure (inches)</b>	
	1.0		73.5		62.6	

**Photo of Measurement Location**



## 2250

Instrument:		2250
Application:		BZ7225 Version 4.7.4
Start Time:		06/30/2020 09:05:23
End Time:		06/30/2020 09:15:23
Elapsed Time:		00:10:00
Bandwidth:		1/3-octave
Max Input Level:		142.09

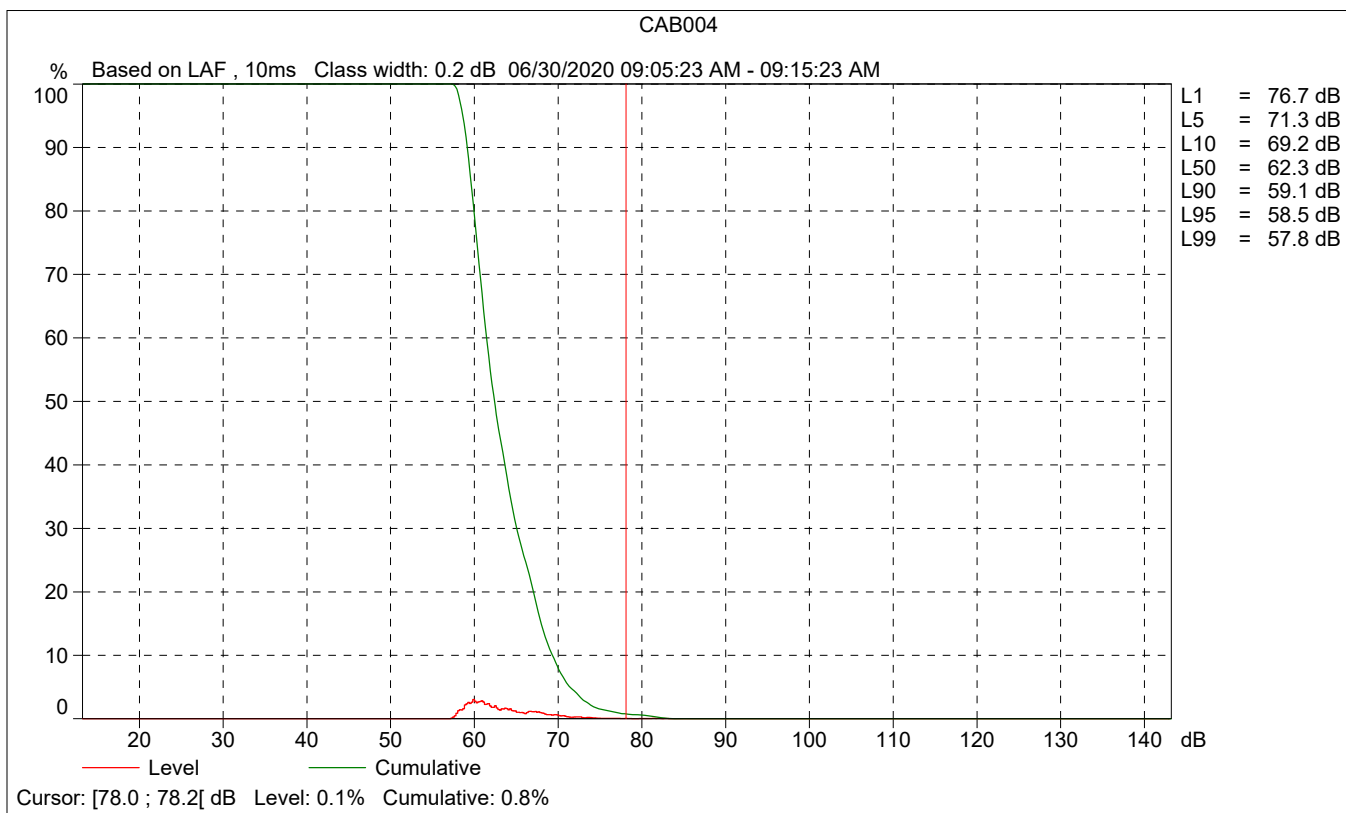
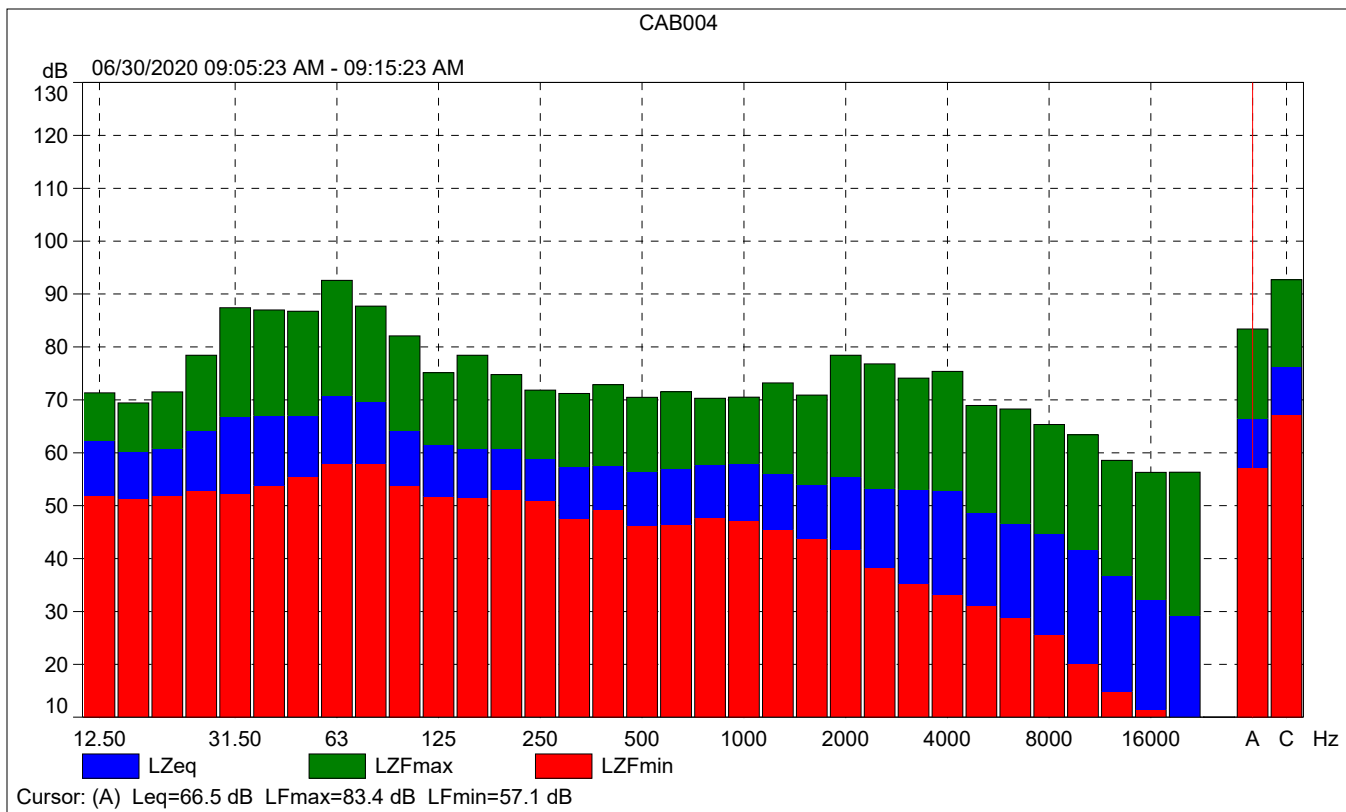
	Time	Frequency
Broadband (excl. Peak):	FSI	AC
Broadband Peak:		C
Spectrum:	FS	Z

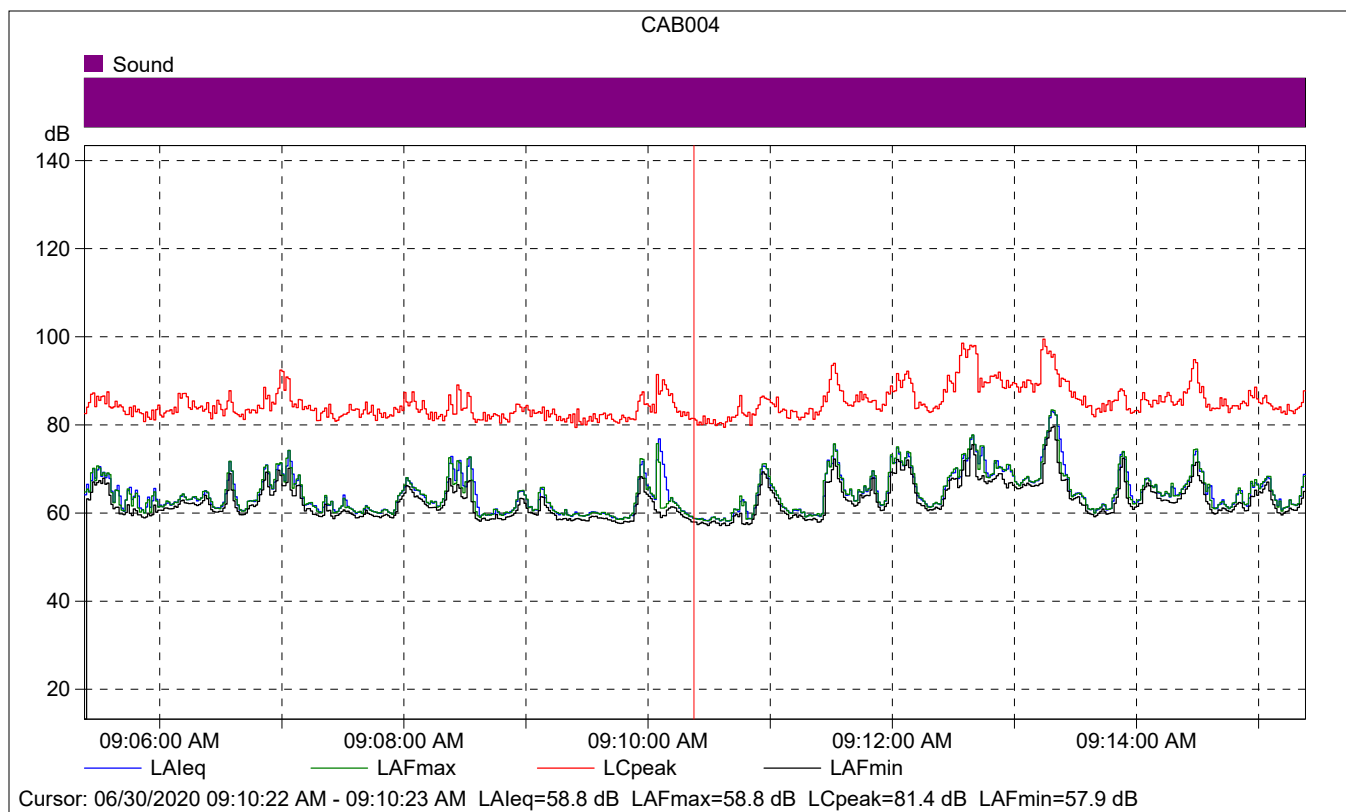
Instrument Serial Number:		3011133
Microphone Serial Number:		3086765
Input:		Top Socket
Windscreen Correction:		UA-1650
Sound Field Correction:		Free-field

Calibration Time:		03/04/2020 16:07:16
Calibration Type:		External reference
Sensitivity:		43.8021086156368 mV/Pa

## CAB004

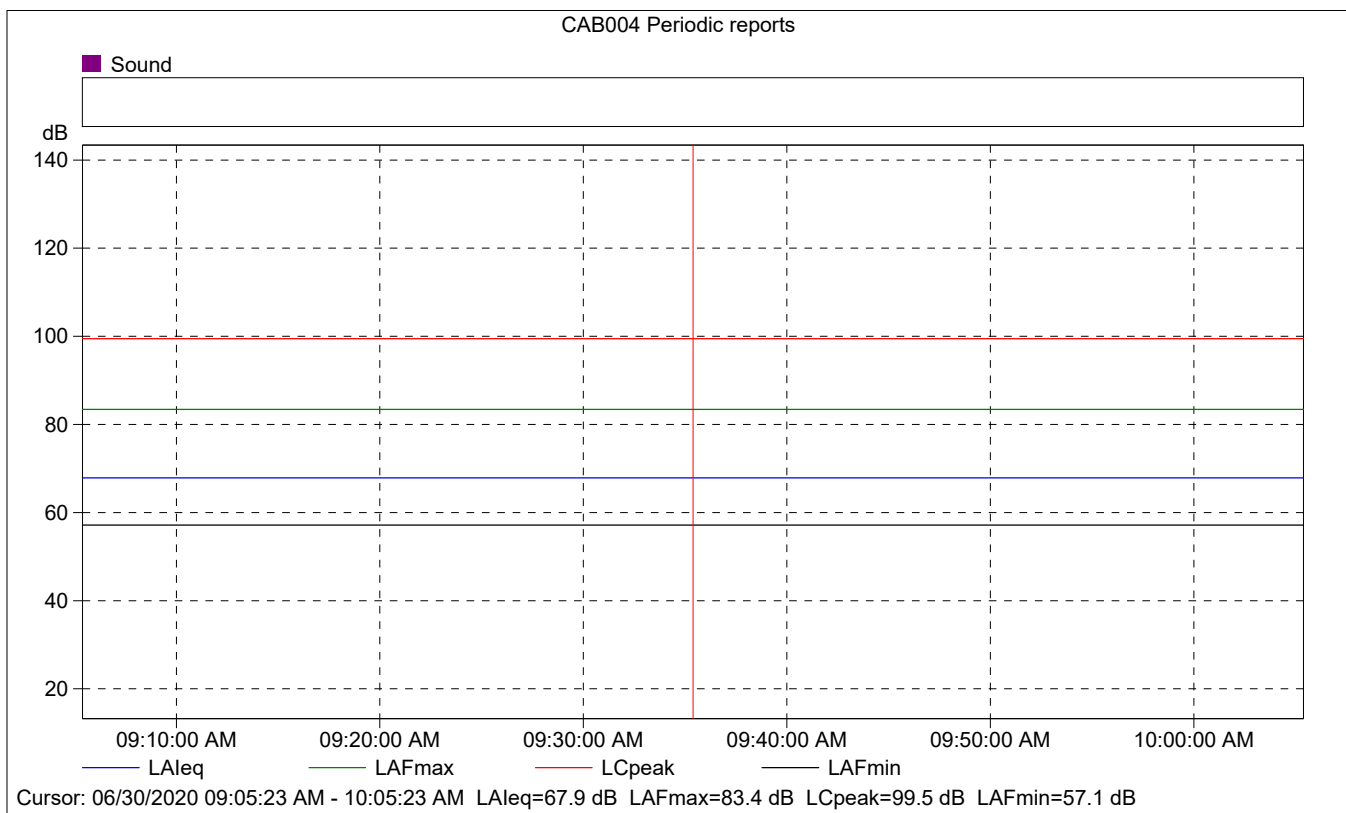
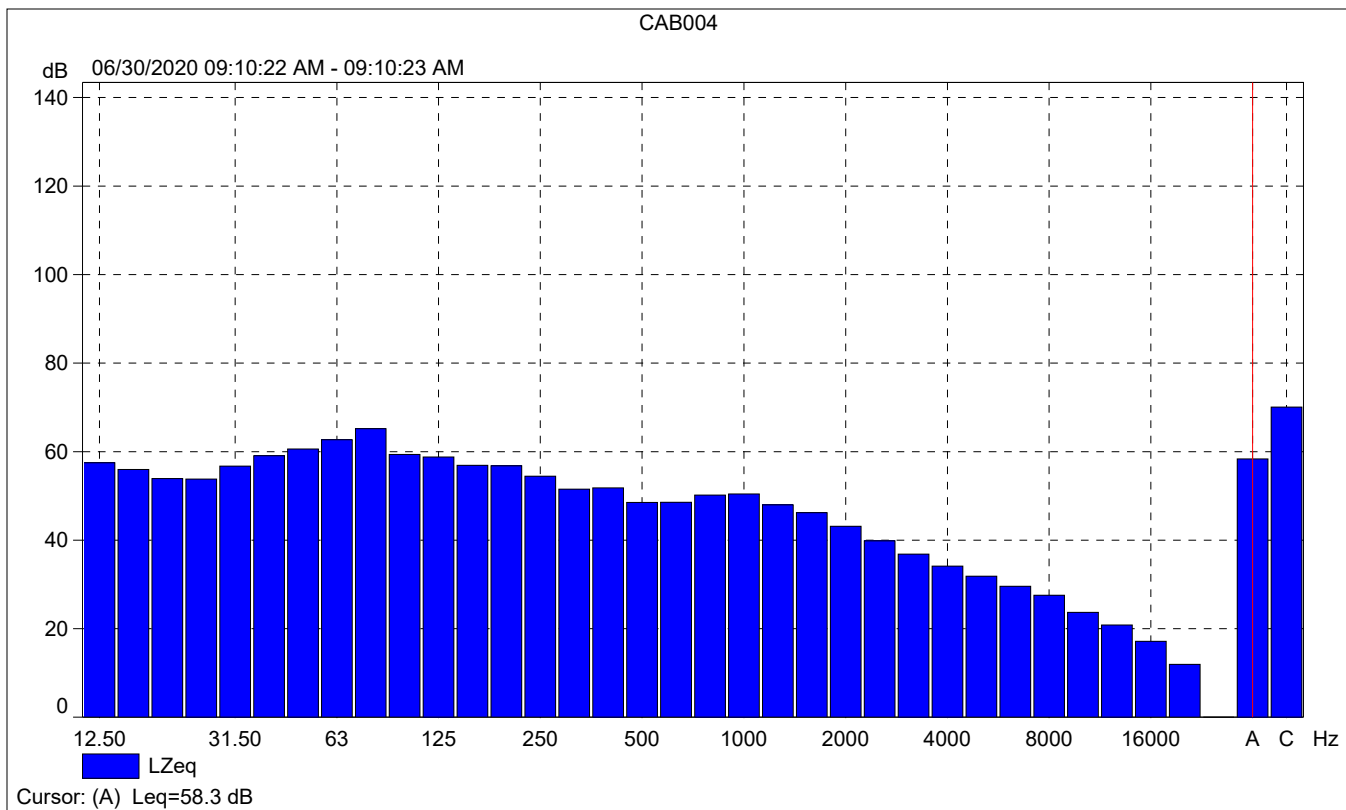
	Start time	End time	Elapsed time	Overload [%]	LAeq [dB]	LAFmax [dB]	LAFmin [dB]
Value				0.00	66.5	83.4	57.1
Time	09:05:23 AM	09:15:23 AM	0:10:00				
Date	06/30/2020	06/30/2020					





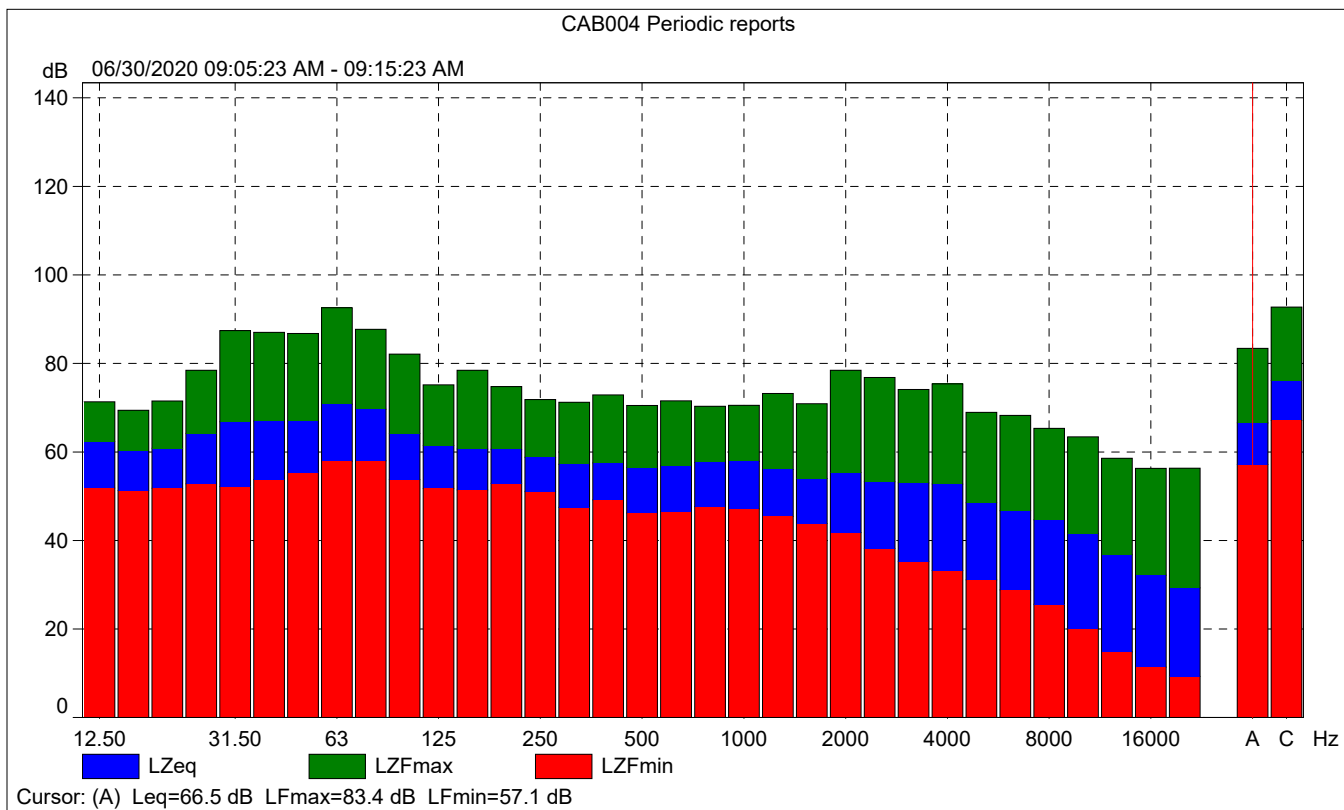
### CAB004

	Start time	Elapsed time	LAeq [dB]	LAFmax [dB]	LAFmin [dB]
Value			58.8	58.8	57.9
Time	09:10:22 AM	0:00:01			
Date	06/30/2020				



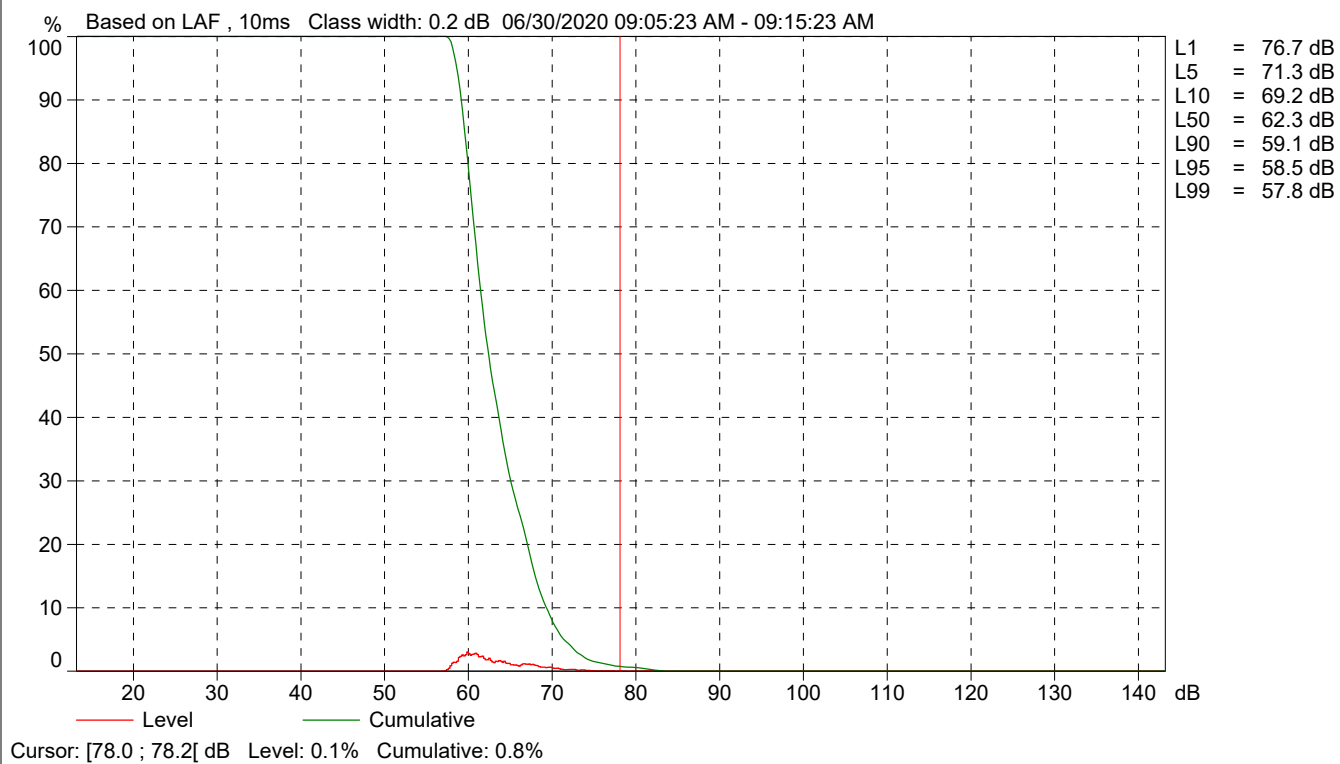
# CAB004 Periodic reports

	Start time	Elapsed time	Overload [%]	LAFeq [dB]	LAFmax [dB]	LAFmin [dB]
Value			0.00	67.9	83.4	57.1
Time	09:05:23 AM	0:10:00				
Date	06/30/2020					





CAB004 Periodic reports





Roadway Construction Noise Model (RCNM), Version 1.1

Report date: 5/7/2021  
 Case Description: Demolition (No Mitigation)\_3700 Riverside Drive Construction

---- Receptor #1 ----

Description	Land Use	Baselines (dBA)		
		Daytime	Evening	Night
Bright Horizons Daycare Center	Commercial	1	1	1

Description	Impact Device	Usage(%)	Equipment		Receptor Distance (feet)	Estimated Shielding (dBA)
			Spec Lmax (dBA)	Actual Lmax (dBA)		
Dozer	No	40	40	81.7	30	0
Tractor	No	40	40	84	30	0
Tractor	No	40	40	84	30	0

Equipment	Results														
	Calculated (dBA)				Noise Limits (dBA)				Noise Limit Exceedance (dBA)						
	Day		Evening		Night		Day		Evening		Night				
*Lmax	Leq	Lmax	Leq	Lmax	Leq	Lmax	Leq	Lmax	Leq	Lmax	Leq	Lmax	Leq	Lmax	Leq
Dozer	86.1	82.1	N/A	N/A	N/A	N/A	N/A	N/A	N/A	N/A	N/A	N/A	N/A	N/A	N/A
Tractor	88.4	84.5	N/A	N/A	N/A	N/A	N/A	N/A	N/A	N/A	N/A	N/A	N/A	N/A	N/A
Tractor	88.4	84.5	N/A	N/A	N/A	N/A	N/A	N/A	N/A	N/A	N/A	N/A	N/A	N/A	N/A
Total	88.4	88.6	N/A	N/A	N/A	N/A	N/A	N/A	N/A	N/A	N/A	N/A	N/A	N/A	N/A

\*Calculated Lmax is the Loudest value.

Roadway Construction Noise Model (RCNM), Version 1.1

Report date: 5/7/2021  
 Case Description: Demolition (Mitigation)\_3700 Riverside Drive Construction

---- Receptor #1 ----

Description	Land Use	Baselines (dBA)		
		Daytime	Evening	Night
Bright Horizons Daycare Center	Commercial	1	1	1

Description	Impact Device	Usage(%)	Equipment			
			Spec Lmax (dBA)	Actual Lmax (dBA)	Receptor Distance (feet)	Estimated Shielding (dBA)
Dozer	No	40		81.7	30	20
Tractor	No	40	84		30	20
Tractor	No	40	84		30	20

Equipment	Results													
	Calculated (dBA)				Noise Limits (dBA)				Noise Limit Exceedance (dBA)					
	*Lmax	Leq	Day Lmax	Leq	Evening Lmax	Leq	Night Lmax	Leq	Day Lmax	Leq	Evening Lmax	Leq	Night Lmax	Leq
Dozer	66.1	62.1	N/A	N/A	N/A	N/A	N/A	N/A	N/A	N/A	N/A	N/A	N/A	N/A
Tractor	68.4	64.5	N/A	N/A	N/A	N/A	N/A	N/A	N/A	N/A	N/A	N/A	N/A	N/A
Tractor	68.4	64.5	N/A	N/A	N/A	N/A	N/A	N/A	N/A	N/A	N/A	N/A	N/A	N/A
Total	68.4	68.6	N/A	N/A	N/A	N/A	N/A	N/A	N/A	N/A	N/A	N/A	N/A	N/A

\*Calculated Lmax is the Loudest value.

Roadway Construction Noise Model (RCNM), Version 1.1

Report date: 5/7/2021  
 Case Description: Grading (No Mitigation)\_3700 Riverside Drive Construction

---- Receptor #1 ----

Description	Land Use	Baselines (dBA)		
		Daytime	Evening	Night
Bright Horizons Daycare Center	Commercial	1	1	1

Description	Impact Device	Usage(%)	Equipment			
			Spec Lmax (dBA)	Actual Lmax (dBA)	Receptor Distance (feet)	Estimated Shielding (dBA)
Auger Drill Rig	No	20		84.4	30	0
Excavator	No	40		80.7	30	0
Dozer	No	40		81.7	30	0
Tractor	No	40	84		30	0

Equipment	Results														
	Calculated (dBA)				Noise Limits (dBA)				Noise Limit Exceedance (dBA)						
	Day		Evening		Night		Day		Evening		Night		Leq		
*Lmax	Leq	Lmax	Leq	Lmax	Leq	Lmax	Leq	Lmax	Leq	Lmax	Leq	Lmax	Leq	Lmax	Leq
Auger Drill Rig	88.8	81.8	N/A	N/A	N/A	N/A	N/A	N/A	N/A	N/A	N/A	N/A	N/A	N/A	N/A
Excavator	85.1	81.2	N/A	N/A	N/A	N/A	N/A	N/A	N/A	N/A	N/A	N/A	N/A	N/A	N/A
Dozer	86.1	82.1	N/A	N/A	N/A	N/A	N/A	N/A	N/A	N/A	N/A	N/A	N/A	N/A	N/A
Tractor	88.4	84.5	N/A	N/A	N/A	N/A	N/A	N/A	N/A	N/A	N/A	N/A	N/A	N/A	N/A
<b>Total</b>	<b>88.8</b>	<b>88.6</b>	<b>N/A</b>	<b>N/A</b>	<b>N/A</b>	<b>N/A</b>	<b>N/A</b>	<b>N/A</b>	<b>N/A</b>	<b>N/A</b>	<b>N/A</b>	<b>N/A</b>	<b>N/A</b>	<b>N/A</b>	<b>N/A</b>

\*Calculated Lmax is the Loudest value.

Roadway Construction Noise Model (RCNM), Version 1.1

Report date: 5/7/2021

Case Description: Grading (Mitigation)\_3700 Riverside Drive Construction

---- Receptor #1 ----

Description	Land Use	Baselines (dBA)		
		Daytime	Evening	Night
Bright Horizons Daycare Center	Commercial	1	1	1

Description	Impact Device	Usage(%)	Equipment			
			Spec Lmax (dBA)	Actual Lmax (dBA)	Receptor Distance (feet)	Estimated Shielding (dBA)
Auger Drill Rig	No	20		84.4	30	20
Excavator	No	40		80.7	30	20
Dozer	No	40		81.7	30	20
Tractor	No	40	84		30	20

Equipment	Results														
	Calculated (dBA)				Noise Limits (dBA)				Noise Limit Exceedance (dBA)						
	Day		Evening		Night		Day		Evening		Night				
*Lmax	Leq	Lmax	Leq	Lmax	Leq	Lmax	Leq	Lmax	Leq	Lmax	Leq	Lmax	Leq	Lmax	Leq
Auger Drill Rig	68.8	61.8	N/A	N/A	N/A	N/A	N/A	N/A	N/A	N/A	N/A	N/A	N/A	N/A	N/A
Excavator	65.1	61.2	N/A	N/A	N/A	N/A	N/A	N/A	N/A	N/A	N/A	N/A	N/A	N/A	N/A
Dozer	66.1	62.1	N/A	N/A	N/A	N/A	N/A	N/A	N/A	N/A	N/A	N/A	N/A	N/A	N/A
Tractor	68.4	64.5	N/A	N/A	N/A	N/A	N/A	N/A	N/A	N/A	N/A	N/A	N/A	N/A	N/A
<b>Total</b>	<b>68.8</b>	<b>68.6</b>	<b>N/A</b>	<b>N/A</b>	<b>N/A</b>	<b>N/A</b>	<b>N/A</b>	<b>N/A</b>	<b>N/A</b>	<b>N/A</b>	<b>N/A</b>	<b>N/A</b>	<b>N/A</b>	<b>N/A</b>	<b>N/A</b>

\*Calculated Lmax is the Loudest value.

Roadway Construction Noise Model (RCNM),Version 1.1

Report date: 5/7/2021  
 Case Description: Building Construction (No Mitigation)\_3700 Riverside Drive Construction

---- Receptor #1 ----

Description	Land Use	Baselines (dBA)		
		Daytime	Evening	Night
Bright Horizons Daycare Center	Commercial	1	1	1

Description	Impact Device	Usage(%)	Equipment			
			Spec Lmax (dBA)	Actual Lmax (dBA)	Receptor Distance (feet)	Estimated Shielding (dBA)
Crane	No	16		80.6	30	0
Front End Loader	No	40		79.1	30	0
Tractor	No	40	84		30	0
Tractor	No	40	84		30	0

Equipment	Results													
	Calculated (dBA)				Noise Limits (dBA)						Noise Limit Exceedance (dBA)			
	*Lmax	Leq	Day Lmax	Day Leq	Evening Lmax	Evening Leq	Night Lmax	Night Leq	Day Lmax	Day Leq	Evening Lmax	Evening Leq	Night Lmax	Night Leq
Crane	85	77	N/A	N/A	N/A	N/A	N/A	N/A	N/A	N/A	N/A	N/A	N/A	N/A
Front End Loader	83.5	79.6	N/A	N/A	N/A	N/A	N/A	N/A	N/A	N/A	N/A	N/A	N/A	N/A
Tractor	88.4	84.5	N/A	N/A	N/A	N/A	N/A	N/A	N/A	N/A	N/A	N/A	N/A	N/A
Tractor	88.4	84.5	N/A	N/A	N/A	N/A	N/A	N/A	N/A	N/A	N/A	N/A	N/A	N/A
Total	88.4	88.4	N/A	N/A	N/A	N/A	N/A	N/A	N/A	N/A	N/A	N/A	N/A	N/A

\*Calculated Lmax is the Loudest value.

Roadway Construction Noise Model (RCNM),Version 1.1

Report date: 5/7/2021  
 Case Description: Building Construction (Mitigation)\_3700 Riverside Drive Construction

---- Receptor #1 ----

Description	Land Use	Baselines (dBA)		
		Daytime	Evening	Night
Bright Horizons Daycare Center	Commercial	1	1	1

Description	Impact Device	Usage(%)	Equipment		Receptor Distance (feet)	Estimated Shielding (dBA)
			Spec Lmax (dBA)	Actual Lmax (dBA)		
Crane	No		16	80.6	30	20
Front End Loader	No		40	79.1	30	20
Tractor	No		40	84	30	20
Tractor	No		40	84	30	20

Equipment	Calculated (dBA)		Results						Noise Limit Exceedance (dBA)					
	*Lmax	Leq	Day		Evening		Night		Day		Evening		Night	
			Lmax	Leq	Lmax	Leq	Lmax	Leq	Lmax	Leq	Lmax	Leq		
Crane	65	57	N/A	N/A	N/A	N/A	N/A	N/A	N/A	N/A	N/A	N/A	N/A	N/A
Front End Loader	63.5	59.6	N/A	N/A	N/A	N/A	N/A	N/A	N/A	N/A	N/A	N/A	N/A	N/A
Tractor	68.4	64.5	N/A	N/A	N/A	N/A	N/A	N/A	N/A	N/A	N/A	N/A	N/A	N/A
Tractor	68.4	64.5	N/A	N/A	N/A	N/A	N/A	N/A	N/A	N/A	N/A	N/A	N/A	N/A
Total	68.4	68.4	N/A	N/A	N/A	N/A	N/A	N/A	N/A	N/A	N/A	N/A	N/A	N/A

\*Calculated Lmax is the Loudest value.

Roadway Construction Noise Model (RCNM), Version 1.1

Report date: 5/7/2021  
 Case Description: Paving (No Mitigation)\_3700 Riverside Drive Construction

---- Receptor #1 ----

Description	Land Use	Baselines (dBA)		
		Daytime	Evening	Night
Bright Horizons Daycare Center	Commercial	1	1	1

Description	Impact Device	Usage (%)	Equipment			
			Spec Lmax (dBA)	Actual Lmax (dBA)	Receptor Distance (feet)	Estimated Shielding (dBA)
Paver	No	50		77.2	20	0
Roller	No	20		80	20	0
Tractor	No	40	84		20	0

Equipment	Calculated (dBA)		Noise Limits (dBA)						Noise Limit Exceedance (dBA)					
	*Lmax	Leq	Day		Evening		Night		Day		Evening		Night	
			Lmax	Leq	Lmax	Leq	Lmax	Leq	Lmax	Leq	Lmax	Leq	Lmax	Leq
Paver	85.2	82.2	N/A	N/A	N/A	N/A	N/A	N/A	N/A	N/A	N/A	N/A	N/A	N/A
Roller	88	81	N/A	N/A	N/A	N/A	N/A	N/A	N/A	N/A	N/A	N/A	N/A	N/A
Tractor	92	88	N/A	N/A	N/A	N/A	N/A	N/A	N/A	N/A	N/A	N/A	N/A	N/A
Total	92	89.6	N/A	N/A	N/A	N/A	N/A	N/A	N/A	N/A	N/A	N/A	N/A	N/A

\*Calculated Lmax is the Loudest value.

Roadway Construction Noise Model (RCNM), Version 1.1

Report date: 5/7/2021  
 Case Description: Paving (Mitigation)\_3700 Riverside Drive Construction

		---- Receptor #1 ----		
		Baselines (dBA)		
Description	Land Use	Daytime	Evening	Night
Bright Horizons Daycare Center	Commercial	1	1	1

		Equipment				
		Impact	Spec Lmax (dBA)	Actual Lmax (dBA)	Receptor Distance (feet)	Estimated Shielding (dBA)
Description	Device	Usage(%)				
Paver	No	50		77.2	20	20
Roller	No	20		80	20	20
Tractor	No	40	84		20	20

		Results													
		Calculated (dBA)				Noise Limits (dBA)				Noise Limit Exceedance (dBA)					
		Day		Evening		Night		Day		Evening		Night			
Equipment		*Lmax	Leq	Lmax	Leq	Lmax	Leq	Lmax	Leq	Lmax	Leq	Lmax	Leq	Lmax	Leq
Paver		65.2	62.2	N/A	N/A	N/A	N/A	N/A	N/A	N/A	N/A	N/A	N/A	N/A	N/A
Roller		68	61	N/A	N/A	N/A	N/A	N/A	N/A	N/A	N/A	N/A	N/A	N/A	N/A
Tractor		72	68	N/A	N/A	N/A	N/A	N/A	N/A	N/A	N/A	N/A	N/A	N/A	N/A
	Total	72	69.6	N/A	N/A	N/A	N/A	N/A	N/A	N/A	N/A	N/A	N/A	N/A	N/A

\*Calculated Lmax is the Loudest value.



Roadway Construction Noise Model (RCNM), Version 1.1

Report date: 5/7/2021  
 Case Description: Architectural Coating (No Mitigation)\_3700 Riverside Drive Construction

---- Receptor #1 ----

Description	Land Use	Baselines (dBA)		
		Daytime	Evening	Night
Bright Horizons Daycare Center	Commercial	1	1	1

Description	Impact Device	Usage(%)	Equipment			Estimated Shielding (dBA)
			Spec Lmax (dBA)	Actual Lmax (dBA)	Receptor Distance (feet)	
Compressor (air)	No	40	77.7	30	0	

Equipment	Calculated (dBA)	Results								Noise Limit Exceedance (dBA)					
		Noise Limits (dBA)				Noise Limit Exceedance (dBA)				Day		Evening		Night	
		*Lmax	Leq	Day Lmax	Day Leq	Evening Lmax	Evening Leq	Night Lmax	Night Leq	Lmax	Leq	Lmax	Leq	Lmax	Leq
Compressor (air)	82.1	78.1	N/A	N/A	N/A	N/A	N/A	N/A	N/A	N/A	N/A	N/A	N/A	N/A	N/A
Total	82.1	78.1	N/A	N/A	N/A	N/A	N/A	N/A	N/A	N/A	N/A	N/A	N/A	N/A	N/A

\*Calculated Lmax is the Loudest value.

Roadway Construction Noise Model (RCNM), Version 1.1

Report date: 5/7/2021

Case Description: Architectural Coating (Mitigation)\_3700 Riverside Drive Construction

---- Receptor #1 ----

Description	Land Use	Baselines (dBA)		
		Daytime	Evening	Night
Bright Horizons Daycare Center	Commercial	1	1	1

Description	Impact Device	Usage(%)	Equipment			Estimated Shielding (dBA)
			Spec Lmax (dBA)	Actual Lmax (dBA)	Receptor Distance (feet)	
Compressor (air)	No	40	77.7	30	20	

Equipment	Calculated (dBA)	Results													
		Noise Limits (dBA)				Noise Limit Exceedance (dBA)									
		Day		Evening		Night		Day		Evening		Night			
Compressor (air)		*Lmax	Leq	Lmax	Leq	Lmax	Leq	Lmax	Leq	Lmax	Leq	Lmax	Leq	Lmax	Leq
		62.1	58.1	N/A	N/A	N/A	N/A	N/A	N/A	N/A	N/A	N/A	N/A	N/A	N/A
	Total	62.1	58.1	N/A	N/A	N/A	N/A	N/A	N/A	N/A	N/A	N/A	N/A	N/A	N/A

\*Calculated Lmax is the Loudest value.