

APPENDIX E:
REVISED NOISE DATA

.....

TRANSORATION NOISE MODELING

Traffic Noise Calculator: FHWA 77-108

Hollister General Plan Update (HOLL-01) Existing Traffic Noise

ID	Output			Distance to CNEL Contour			Inputs											Auto Inputs				
	L _{eq-24hr}	L _{dn}	CNEL	70 dBA	65 dBA	60 dBA	Roadway	Segment	ADT	Posted Speed Limit	Grade	% Autos	% Med Trucks	% Heavy Trucks	% Daytime	% Evening	% Night	Number of Lanes	Site Condition	Distance to Receiver	Ground Absorption	Lane Distance
1	70.6	74.3	74.7	103	223	480	San Felipe Rd	North of Flynn Rd	13,450	55	0.0%	91.3%	0.0%	8.7%	75.0%	10.0%	15.0%	4	Soft	50	0.5	44
2	65.2	68.9	69.3	45	97	209	San Felipe Rd	South of Flynn Rd	13,700	40	0.0%	98.1%	0.0%	1.9%	75.0%	10.0%	15.0%	4	Soft	50	0.5	44
3	59.1	62.9	63.2	18	38	82	Flynn Rd	West of San Felipe Rd	1,930	40	0.0%	93.1%	0.0%	6.9%	75.0%	10.0%	15.0%	2	Soft	50	0.5	20
4	67.3	71.0	71.4	62	134	288	San Felipe Rd	North of Wright Rd	13,780	40	0.0%	94.3%	0.0%	5.7%	75.0%	10.0%	15.0%	4	Soft	50	0.5	44
5	66.3	70.1	70.4	53	115	248	San Felipe Rd	South of Wright Rd	16,410	40	0.0%	97.6%	0.0%	2.4%	75.0%	10.0%	15.0%	4	Soft	50	0.5	44
6	62.6	66.3	66.7	30	65	140	McCloskey Rd	East of San Felipe Rd	3,800	50	0.0%	96.3%	0.0%	3.7%	75.0%	10.0%	15.0%	2	Soft	50	0.5	20
7	66.8	70.5	70.9	57	124	266	San Felipe Rd	North of SR-25	16,090	40	0.0%	96.7%	0.0%	3.3%	75.0%	10.0%	15.0%	4	Soft	50	0.5	44
8	66.1	69.8	70.1	51	110	237	San Felipe Rd	South of SR-25	16,300	40	0.0%	98.0%	0.0%	2.0%	75.0%	10.0%	15.0%	4	Soft	50	0.5	44
9	68.7	72.4	72.8	77	166	357	SR-25	East of San Felipe Rd	13,150	55	0.0%	97.2%	0.0%	2.8%	75.0%	10.0%	15.0%	4	Soft	50	0.5	44
10	70.2	74.0	74.3	97	210	451	SR-25	West of San Felipe Rd	12,020	55	0.0%	90.4%	0.0%	9.6%	75.0%	10.0%	15.0%	2	Soft	50	0.5	20
11	71.2	74.9	75.2	112	241	520	SR-156	North of Buena Vista Rd	6,540	55	0.0%	67.5%	0.0%	32.5%	75.0%	10.0%	15.0%	2	Soft	50	0.5	20
12	69.0	72.7	73.1	80	172	371	SR-156	South of Buena Vista Rd	7,210	55	0.0%	86.0%	0.0%	14.0%	75.0%	10.0%	15.0%	2	Soft	50	0.5	20
13	56.6	60.3	60.7	12	26	56	Buena Vista Rd	East of SR-156	2,710	30	0.0%	96.7%	0.0%	3.3%	75.0%	10.0%	15.0%	2	Soft	50	0.5	20
14	53.1	56.8	57.2	7	15	32	Buena Vista Rd	East of Beresini Ln	1,110	35	0.0%	97.9%	0.0%	2.1%	75.0%	10.0%	15.0%	2	Soft	50	0.5	20
15	56.6	60.3	60.7	12	26	56	Buena Vista Rd	West of Beresini Ln	1,600	30	0.0%	92.7%	0.0%	7.3%	75.0%	10.0%	15.0%	2	Soft	50	0.5	20
16	53.1	56.8	57.2	7	15	32	Buena Vista Rd	East of Miller Rd	2,380	25	0.0%	98.3%	0.0%	1.7%	75.0%	10.0%	15.0%	2	Soft	50	0.5	20
17	53.1	56.8	57.2	7	15	32	Buena Vista Rd	West of Miller Rd	1,810	30	0.0%	98.6%	0.0%	1.4%	75.0%	10.0%	15.0%	2	Soft	50	0.5	20
18	55.0	58.7	59.0	9	20	43	Westside Rd	North of Buena Vista Rd	2,430	35	0.0%	99.5%	0.0%	0.5%	75.0%	10.0%	15.0%	2	Soft	50	0.5	20
19	57.5	61.2	61.6	14	30	64	Westside Blvd	South of Buena Vista Rd	4,150	35	0.0%	99.3%	0.0%	0.7%	75.0%	10.0%	15.0%	2	Soft	50	0.5	20
20	55.2	58.9	59.3	10	21	45	Buena Vista Rd	West of Westside Blvd	2,390	30	0.0%	97.7%	0.0%	2.3%	75.0%	10.0%	15.0%	2	Soft	50	0.5	20
21	65.9	69.6	70.0	50	108	233	San Felipe Rd	North of North St	16,550	35	0.0%	96.5%	0.0%	3.5%	75.0%	10.0%	15.0%	4	Soft	50	0.5	44
22	60.5	64.2	64.6	22	47	101	San Benito St	South of North St	12,100	25	0.0%	98.1%	0.0%	1.9%	75.0%	10.0%	15.0%	4	Soft	50	0.5	44
23	58.1	61.8	62.2	15	33	70	Santa Ana Rd	East of San Felipe Rd	6,460	25	0.0%	97.7%	0.0%	2.3%	75.0%	10.0%	15.0%	2	Soft	50	0.5	20
24	57.2	60.9	61.3	13	28	61	North St	West of San Felipe Rd	6,310	25	0.0%	98.4%	0.0%	1.6%	75.0%	10.0%	15.0%	2	Soft	50	0.5	20
25	70.7	74.4	74.8	104	224	482	SR-25	North of Santa Ana Rd	13,110	55	0.0%	90.7%	0.0%	9.3%	75.0%	10.0%	15.0%	4	Soft	50	0.5	44
26	67.4	71.1	71.5	63	136	293	SR-25	South of Santa Ana Rd	16,420	45	0.0%	97.7%	0.0%	2.3%	75.0%	10.0%	15.0%	4	Soft	50	0.5	44
27	60.4	64.1	64.5	22	47	100	Santa Ana Rd	East of SR-25	6,160	35	0.0%	98.0%	0.0%	2.0%	75.0%	10.0%	15.0%	2	Soft	50	0.5	20
28	60.4	64.1	64.5	21	46	100	Santa Ana Rd	West of SR-25	7,050	35	0.0%	98.7%	0.0%	1.3%	75.0%	10.0%	15.0%	2	Soft	50	0.5	20
29	66.4	70.1	70.5	54	116	249	San Juan Hollister Rd	East of Felice Dr	13,110	40	0.0%	95.6%	0.0%	4.4%	75.0%	10.0%	15.0%	2	Soft	50	0.5	20
30	62.8	66.5	66.9	31	67	144	San Juan Hollister Rd	West of Felice Dr	12,870	30	0.0%	97.4%	0.0%	2.6%	75.0%	10.0%	15.0%	2	Soft	50	0.5	20
31	69.3	73.0	73.4	84	182	392	SR-25	North of Meridian St	16,560	45	0.0%	93.5%	0.0%	6.5%	75.0%	10.0%	15.0%	4	Soft	50	0.5	44
32	68.3	72.1	72.4	73	157	338	SR-25	South of Meridian St	19,110	45	0.0%	97.2%	0.0%	2.8%	75.0%	10.0%	15.0%	4	Soft	50	0.5	44
33	61.5	65.3	65.6	26	55	119	Meridian St	East of SR-25	6,480	40	0.0%	98.7%	0.0%	1.3%	75.0%	10.0%	15.0%	4	Soft	50	0.5	44
34	61.9	65.6	66.0	27	58	126	Meridian St	West of SR-25	8,210	40	0.0%	99.5%	0.0%	0.5%	75.0%	10.0%	15.0%	4	Soft	50	0.5	44
35	69.4	73.1	73.4	85	183	394	SR-25	North of Hillcrest Rd	18,890	45	0.0%	94.9%	0.0%	5.1%	75.0%	10.0%	15.0%	4	Soft	50	0.5	44
36	68.5	72.3	72.6	75	161	348	SR-25	South of Hillcrest Rd	20,460	45	0.0%	97.4%	0.0%	2.6%	75.0%	10.0%	15.0%	4	Soft	50	0.5	44
37	64.5	68.2	68.6	40	86	186	Hillcrest Rd	East of SR-25	9,270	45	0.0%	98.5%	0.0%	1.5%	75.0%	10.0%	15.0%	4	Soft	50	0.5	44
38	63.7	67.5	67.8	36	77	167	Hillcrest Rd	West of SR-25	8,060	35	0.0%	94.6%	0.0%	5.4%	75.0%	10.0%	15.0%	2	Soft	50	0.5	20
39	57.9	61.6	62.0	15	31	68	San Benito St	North of Nash Rd	6,630	30	0.0%	99.3%	0.0%	0.7%	75.0%	10.0%	15.0%	2	Soft	50	0.5	20
40	57.9	61.6	62.0	15	31	68	San Benito St	South of Nash Rd	6,880	30	0.0%	99.4%	0.0%	0.6%	75.0%	10.0%	15.0%	2	Soft	50	0.5	20
41	58.7	62.4	62.8	17	36	77	Nash Rd	East of San Benito St	10,340	30	0.0%	100.0%	0.0%	0.0%	75.0%	10.0%	15.0%	2	Soft	50	0.5	20
42	56.3	60.0	60.4	11	25	53	Nash Rd	West of San Benito St	3,790	35	0.0%	100.0%	0.0%	0.0%	75.0%	10.0%	15.0%	2	Soft	50	0.5	20
43	59.9	63.6	64.0	20	43	93	San Benito St	North of Union Rd	6,900	30	0.0%	97.6%	0.0%	2.4%	75.0%	10.0%	15.0%	2	Soft	50	0.5	20
44	64.0	67.7	68.1	37	80	173	Union Rd	East of San Benito St	9,060	40	0.0%	97.0%	0.0%	3.0%	75.0%	10.0%	15.0%	2	Soft	50	0.5	20
45	66.0	69.7	70.1	51	109	235	Union Rd	West of San Benito St	10,540	40	0.0%	94.4%	0.0%	5.6%	75.0%	10.0%	15.0%	2	Soft	50	0.5	20
46	57.5	61.2	61.5	14	29	63	Southside Rd	North of Union Rd	1,980	45	0.0%	98.8%	0.0%	1.2%	75.0%	10.0%	15.0%	2	Soft	50	0.5	20
47	60.7	64.4	64.8	23	49	105	Southside Rd	South of Union Rd	3,800	45	0.0%	98.1%	0.0%	1.9%	75.0%	10.0%	15.0%	2	Soft	50	0.5	20
48	67.5	71.2	71.6	64	138	297	Union Rd	East of Southside Rd	9,440	55	0.0%	96.2%	0.0%	3.8%	75.0%	10.0%	15.0%	2	Soft	50	0.5	20
49	65.3	69.0	69.4	46	98	212	Union Rd	West of Southside Rd	8,940	45	0.0%	96.4%	0.0%	3.6%	75.0%	10.0%	15.0%	2	Soft	50	0.5	20
50	69.6	73.3	73.7	88	190	410	Airline Hwy/SR-25	North of Union Rd	12,400	55	0.0%	93.3%	0.0%	6.7%	75.0%	10.0%	15.0%	2	Soft	50	0.5	20
51	67.2	70.9	71.3	61	131	283	Airline Hwy/SR-25	South of Union Rd	8,880	55	0.0%	96.3%	0.0%	3.7%	75.0%	10.0%	15.0%	2	Soft	50	0.5	20
52	59.8	63.5	63.9	20	42	91	Avenida Cesar Chavez	East of Airline Hwy/SR-25	7,050	35	0.0%	99.3%	0.0%	0.7%	75.0%	10.0%	15.0%	2	Soft	50	0.5	20
53	67.3	71.0	71.4	62	134	288	Union Rd	West of Airline Hwy/SR-25	9,330	55	0.0%	96.6%	0.0%	3.4%	75.0%	10.0%	15.0%	2	Soft	50	0.5	20
54	59.5	63.2	63.6	19	40	87	San Benito St	North of 4th St	7,670	25	0.0%	97.2%	0.0%	2.8%	75.0%	10.0%	15.0%	4	Soft	50	0.5	44
55	51.5	55.2	55.6	6	12	26	San Benito St	South of 4th St	3,370	25	0.0%	100.0%	0.0%	0.0%	75.0%	10.0%	15.0%	1	Soft	50	0.5	6
56	62.4	66.1	66.5	29	63	136	4th St	East of San Benito St	7,000	35	0.0%	95.9%	0.0%	4.1%	75.0%	10.0%	15.0%	2	Soft	50	0.5	20
57	62.8	66.5	66.9	31	67	144	4th St	West of San Benito St	9,560	35	0.0%	97.4%	0.0%	2.6%	75.0%	10.0%	15.0%	2	Soft	50	0.5	20
58	63.4	67.1	67.5	34	73	157	Fairview Rd	North of Hillcrest Rd	9,290	35	0.0%	96.4%	0.0%	3.6%	75.0%	10.0%	15.0%	2	Soft	50	0.5	20
59	61.8	65.5	65.9	26	57	123	Fairview Rd	South of Hillcrest Rd	7,560	35	0.0%	97.5%	0.0%	2.5%	75.0%	10.0%	15.0%	3	Soft	50	0.5	32
60	57.2	60.9	61.3	13	28	61	Hillcrest Rd	East of Fairview Rd	1,400	45	0.0%	96.6%	0.0%	3.4%	75.0%	10.0%	15.0%	2	Soft	50	0.5	20
61	61.3	65.0	65.4	25	53	115	Hillcrest Rd	West of Fairview Rd	3,330	50	0.0%	97.9%	0.0%	2.1%	75.0%	10.0%	15.0%	2	Soft	50	0.5	20
62	64.2	67.9	68.3	38	83	178	Fairview Rd	North of Sunnyslope Rd	7,440	35	0.0%	93.2%	0.0%	6.8%	75.0%	10.0%	15.0%	4	Soft	50	0.5	44
63	60.7	64.4	64.8	23	49	105	Fairview Rd	South of Sunnyslope Rd	5,730	35	0.0%	97.2%	0.0%	2.8								

Traffic Noise Calculator: FHWA 77-108

Hollister General Plan Update (HOLL-01) Existing Traffic Noise

ID	Output			Inputs											Auto Inputs							
	dBA at 50 feet			Distance to CNEL Contour			Roadway	Segment	ADT	Posted Speed Limit	Grade	% Autos	% Med Trucks	% Heavy Trucks	% Daytime	% Evening	% Night	Number of Lanes	Site Condition	Distance to Receiver	Ground Absorption	Lane Distance
	L _{avg,24hr}	L _{dn}	CNEL	70 dBA	65 dBA	60 dBA																
1	71.6	75.3	75.7	120	260	559	San Felipe Rd	North of Flynn Rd	16,930	55	0.0%	91.3%	0.0%	8.7%	75.0%	10.0%	15.0%	4	Soft	50	0.5	44
2	65.6	69.3	69.7	47	102	220	San Felipe Rd	South of Flynn Rd	14,770	40	0.0%	98.1%	0.0%	1.9%	75.0%	10.0%	15.0%	4	Soft	50	0.5	44
3	62.8	66.5	66.9	31	67	144	Flynn Rd	West of San Felipe Rd	4,480	40	0.0%	93.1%	0.0%	6.9%	75.0%	10.0%	15.0%	2	Soft	50	0.5	20
4	67.8	71.5	71.9	67	145	312	San Felipe Rd	North of Wright Rd	15,520	40	0.0%	94.3%	0.0%	5.7%	75.0%	10.0%	15.0%	4	Soft	50	0.5	44
5	66.9	70.6	70.9	58	125	268	San Felipe Rd	South of Wright Rd	18,430	40	0.0%	97.6%	0.0%	2.4%	75.0%	10.0%	15.0%	4	Soft	50	0.5	44
6	64.0	67.7	68.1	37	80	173	McCloskey Rd	East of San Felipe Rd	5,220	50	0.0%	96.3%	0.0%	3.7%	75.0%	10.0%	15.0%	2	Soft	50	0.5	20
7	67.8	71.5	71.9	67	144	311	San Felipe Rd	North of SR-25	20,240	40	0.0%	96.7%	0.0%	3.3%	75.0%	10.0%	15.0%	4	Soft	50	0.5	44
8	67.7	71.4	71.8	66	142	306	San Felipe Rd	South of SR-25	23,900	40	0.0%	98.0%	0.0%	2.0%	75.0%	10.0%	15.0%	4	Soft	50	0.5	44
9	69.8	73.5	73.9	91	197	424	SR-25	East of San Felipe Rd	17,040	55	0.0%	97.2%	0.0%	2.8%	75.0%	10.0%	15.0%	4	Soft	50	0.5	44
10	72.9	76.6	77.0	147	317	683	SR-25	West of San Felipe Rd	22,360	55	0.0%	90.4%	0.0%	9.6%	75.0%	10.0%	15.0%	2	Soft	50	0.5	20
11	71.3	75.0	75.4	114	246	531	SR-156	North of Buena Vista Rd	6,750	55	0.0%	67.5%	0.0%	32.5%	75.0%	10.0%	15.0%	2	Soft	50	0.5	20
12	69.5	73.2	73.6	87	187	402	SR-156	South of Buena Vista Rd	8,120	55	0.0%	86.0%	0.0%	14.0%	75.0%	10.0%	15.0%	2	Soft	50	0.5	20
13	56.9	60.6	61.0	13	27	58	Buena Vista Rd	East of SR-156	2,890	30	0.0%	96.7%	0.0%	3.3%	75.0%	10.0%	15.0%	2	Soft	50	0.5	20
14	53.6	57.3	57.7	8	16	35	Buena Vista Rd	East of Beresini Ln	1,250	35	0.0%	97.9%	0.0%	2.1%	75.0%	10.0%	15.0%	2	Soft	50	0.5	20
15	57.0	60.7	61.1	13	27	59	Buena Vista Rd	West of Beresini Ln	1,740	30	0.0%	92.7%	0.0%	7.3%	75.0%	10.0%	15.0%	2	Soft	50	0.5	20
16	54.6	58.3	58.7	9	19	41	Buena Vista Rd	East of Miller Rd	3,400	25	0.0%	98.3%	0.0%	1.7%	75.0%	10.0%	15.0%	2	Soft	50	0.5	20
17	54.8	58.5	58.9	9	20	42	Buena Vista Rd	West of Miller Rd	2,680	30	0.0%	98.6%	0.0%	1.4%	75.0%	10.0%	15.0%	2	Soft	50	0.5	20
18	55.1	58.8	59.2	10	21	44	Westside Rd	North of Buena Vista Rd	2,530	35	0.0%	99.5%	0.0%	0.5%	75.0%	10.0%	15.0%	2	Soft	50	0.5	20
19	57.8	61.5	61.9	14	31	67	Westside Blvd	South of Buena Vista Rd	4,430	35	0.0%	99.3%	0.0%	0.7%	75.0%	10.0%	15.0%	2	Soft	50	0.5	20
20	57.8	61.5	61.8	14	31	66	Buena Vista Rd	West of Westside Blvd	4,260	30	0.0%	97.7%	0.0%	2.3%	75.0%	10.0%	15.0%	2	Soft	50	0.5	20
21	67.5	71.3	71.6	64	138	296	San Felipe Rd	North of North St	23,710	35	0.0%	96.5%	0.0%	4.4%	75.0%	10.0%	15.0%	4	Soft	50	0.5	44
22	61.0	64.7	65.1	23	51	109	San Benito St	South of North St	13,460	25	0.0%	98.1%	0.0%	1.9%	75.0%	10.0%	15.0%	4	Soft	50	0.5	44
23	60.0	63.7	64.1	20	44	94	Santa Ana Rd	East of San Felipe Rd	9,990	25	0.0%	97.7%	0.0%	2.3%	75.0%	10.0%	15.0%	2	Soft	50	0.5	20
24	58.5	62.2	62.6	16	35	74	North St	West of San Felipe Rd	8,560	25	0.0%	98.4%	0.0%	1.6%	75.0%	10.0%	15.0%	2	Soft	50	0.5	20
25	71.8	75.5	75.9	124	267	576	SR-25	North of Santa Ana Rd	17,100	55	0.0%	90.7%	0.0%	9.3%	75.0%	10.0%	15.0%	4	Soft	50	0.5	44
26	68.2	71.9	72.2	71	152	328	SR-25	South of Santa Ana Rd	19,430	45	0.0%	97.7%	0.0%	2.3%	75.0%	10.0%	15.0%	4	Soft	50	0.5	44
27	61.6	65.3	65.7	26	55	119	Santa Ana Rd	East of SR-25	7,990	35	0.0%	98.0%	0.0%	2.0%	75.0%	10.0%	15.0%	2	Soft	50	0.5	20
28	61.0	64.7	65.1	24	51	109	Santa Ana Rd	West of SR-25	8,100	35	0.0%	98.7%	0.0%	1.3%	75.0%	10.0%	15.0%	2	Soft	50	0.5	20
29	67.3	71.1	71.4	62	134	289	San Juan Hollister Rd	East of Felice Dr	16,410	40	0.0%	95.6%	0.0%	4.4%	75.0%	10.0%	15.0%	4	Soft	50	0.5	44
30	63.8	67.6	67.9	36	78	169	San Juan Hollister Rd	West of Felice Dr	16,290	30	0.0%	97.4%	0.0%	2.6%	75.0%	10.0%	15.0%	2	Soft	50	0.5	20
31	70.0	73.8	74.1	94	203	438	SR-25	North of Meridian St	19,560	45	0.0%	93.5%	0.0%	6.5%	75.0%	10.0%	15.0%	4	Soft	50	0.5	44
32	69.3	73.0	73.4	84	181	390	SR-25	South of Meridian St	23,740	45	0.0%	97.2%	0.0%	2.8%	75.0%	10.0%	15.0%	4	Soft	50	0.5	44
33	62.2	65.9	66.3	28	61	131	Meridian St	East of SR-25	7,550	40	0.0%	98.7%	0.0%	1.3%	75.0%	10.0%	15.0%	4	Soft	50	0.5	44
34	62.5	66.2	66.6	30	64	138	Meridian St	West of SR-25	9,430	40	0.0%	99.5%	0.0%	0.5%	75.0%	10.0%	15.0%	4	Soft	50	0.5	44
35	70.3	74.0	74.4	98	212	456	SR-25	North of Hillcrest Rd	23,520	45	0.0%	94.9%	0.0%	5.1%	75.0%	10.0%	15.0%	4	Soft	50	0.5	44
36	69.6	73.3	73.7	88	189	408	SR-25	South of Hillcrest Rd	25,970	45	0.0%	97.4%	0.0%	2.5%	75.0%	10.0%	15.0%	4	Soft	50	0.5	44
37	64.7	68.4	68.8	42	89	193	Hillcrest Rd	East of SR-25	9,760	45	0.0%	98.5%	0.0%	1.5%	75.0%	10.0%	15.0%	4	Soft	50	0.5	44
38	64.6	68.3	68.7	41	89	191	Hillcrest Rd	West of SR-25	9,870	35	0.0%	94.6%	0.0%	5.4%	75.0%	10.0%	15.0%	2	Soft	50	0.5	20
39	58.5	62.2	62.6	16	35	75	San Benito St	North of Nash Rd	7,690	30	0.0%	99.3%	0.0%	0.7%	75.0%	10.0%	15.0%	2	Soft	50	0.5	20
40	59.5	63.2	63.6	19	40	87	San Benito St	South of Nash Rd	9,940	30	0.0%	99.4%	0.0%	0.6%	75.0%	10.0%	15.0%	2	Soft	50	0.5	20
41	59.0	62.7	63.1	17	37	81	Nash Rd	East of San Benito St	11,100	30	0.0%	100.0%	0.0%	0.0%	75.0%	10.0%	15.0%	2	Soft	50	0.5	20
42	56.8	60.5	60.9	12	26	57	Nash Rd	West of San Benito St	4,230	35	0.0%	100.0%	0.0%	0.0%	75.0%	10.0%	15.0%	2	Soft	50	0.5	20
43	61.8	65.5	65.9	27	58	124	San Benito St	North of Union Rd	10,690	30	0.0%	97.6%	0.0%	2.4%	75.0%	10.0%	15.0%	2	Soft	50	0.5	20
44	65.4	69.1	69.5	46	99	214	Union Rd	East of San Benito St	12,440	40	0.0%	97.0%	0.0%	3.0%	75.0%	10.0%	15.0%	2	Soft	50	0.5	20
45	67.1	70.8	71.2	60	130	280	Union Rd	West of San Benito St	13,730	40	0.0%	94.4%	0.0%	5.6%	75.0%	10.0%	15.0%	2	Soft	50	0.5	20
46	57.7	61.5	61.8	14	31	66	Southside Rd	North of Union Rd	2,120	45	0.0%	98.8%	0.0%	1.2%	75.0%	10.0%	15.0%	2	Soft	50	0.5	20
47	62.3	66.0	66.4	29	62	133	Southside Rd	South of Union Rd	5,430	45	0.0%	98.1%	0.0%	1.9%	75.0%	10.0%	15.0%	2	Soft	50	0.5	20
48	68.8	72.5	72.9	78	168	362	Union Rd	East of Southside Rd	12,740	55	0.0%	96.2%	0.0%	3.8%	75.0%	10.0%	15.0%	2	Soft	50	0.5	20
49	66.8	70.5	70.9	57	123	266	Union Rd	West of Southside Rd	12,530	45	0.0%	96.4%	0.0%	3.6%	75.0%	10.0%	15.0%	2	Soft	50	0.5	20
50	70.8	74.5	74.9	105	227	489	Airline Hwy/SR-25	North of Union Rd	16,140	55	0.0%	93.3%	0.0%	6.7%	75.0%	10.0%	15.0%	2	Soft	50	0.5	20
51	68.4	72.2	72.5	74	159	342	Airline Hwy/SR-25	South of Union Rd	11,800	55	0.0%	96.3%	0.0%	3.7%	75.0%	10.0%	15.0%	2	Soft	50	0.5	20
52	61.3	65.0	65.4	25	53	115	Avenida Cesar Chavez	East of Airline Hwy/SR-25	5,970	35	0.0%	99.3%	0.0%	0.7%	75.0%	10.0%	15.0%	2	Soft	50	0.5	20
53	68.6	72.3	72.7	75	162	349	Union Rd	West of Airline Hwy/SR-25	12,470	55	0.0%	96.6%	0.0%	3.4%	75.0%	10.0%	15.0%	2	Soft	50	0.5	20
54	60.6	64.3	64.7	22	48	103	San Benito St	North of 4th St	9,920	25	0.0%	97.2%	0.0%	2.8%	75.0%	10.0%	15.0%	4	Soft	50	0.5	44
55	54.3	58.0	58.4	8	18	39	San Benito St	South of 4th St	6,330	25	0.0%	100.0%	0.0%	0.0%	75.0%	10.0%	15.0%	1	Soft	50	0.5	6
56	63.5	67.2	67.6	35	75	161	4th St	East of San Benito St	9,000	35	0.0%	95.9%	0.0%	4.1%	75.0%	10.0%	15.0%	2	Soft	50	0.5	20
57	64.2	67.9	68.3	38	82	178	4th St	West of San Benito St	13,050	35	0.0%	97.4%	0.0%	2.6%	75.0%	10.0%	15.0%	2	Soft	50	0.5	20
58	63.4	67.2	67.5	34	74	159	Fairview Rd	North of Hillcrest Rd	9,470	35	0.0%	96.4%	0.0%	3.6%	75.0%	10.0%	15.0%	2	Soft	50	0.5	20
59	61.9	65.6	66.0	27	59	126	Fairview Rd	South of Hillcrest Rd	7,850	35	0.0%	97.4%	0.0%	2.5%	75.0%	10.0%	15.0%	3	Soft	50	0.5	32
60	58.2	61.9	62.3	15	33	71	Hillcrest Rd	East of Fairview Rd	1,760	45	0.0%	96.6%	0.0%	3.4%	75.0%	10.0%	15.0%	2	Soft	50	0.5	20
61	62.0	65.7	66.1	28	59	128	Hillcrest Rd	West of Fairview Rd	3,900	50	0.0%	97.9%	0.0%	2.1%	75.0%	10.0%	15.0%	2	Soft	50	0.5	20
62	64.4	68.1	68.4	39	85	183	Fairview Rd	North of Sunnyslope Rd	7,750	35	0.0%	93.2%	0.0%	6.8%	75.0%	10.0%	15.0%	4	Soft	50	0.5	44
63	61.0	64.7	65.1																			

FRA Grade Crossing Noise Model

User Input	
Noise Situation (Pick from List)	1
Horn Lmax (dBA) @ 100 feet	110
Horn Location on Locomotive(Pick from List)	1
Non Train Noise Environment (pick from list)	2
Shielding (Pick from List)	4
Length of Impact Area (pick from list)	1
Existing Train Speed (mph)	10
Future Train Speed (mph)	10
Number of Existing Trains in one Direction	1
Number of Future Trains in one Direction	1
Existing Number of Day Trains (7 am to 10 p.m.)	1
Future Number of Day Trains (7 am to 10 p.m.)	1
Existing Number of Night Trains (10 p.m. to 7 am)	0
Future Number of Night Trains (10 p.m. to 7 am)	0
Existing Average Number of Cars	8
Future Average Number of Cars	8
Existing Average Number of Locomotives	2
Future Average Number of Locomotives	2

Noise Situation	
Horns Existing and Future	1
Horns in Future Only	2
No Horns Existing and Future	3

Horn Location on Locomotive	
National Average (50% front, 50% middle)	1
All Front Mounted	2
All Middle Mounted	3
User Defined	9 % front mounted horns
	4

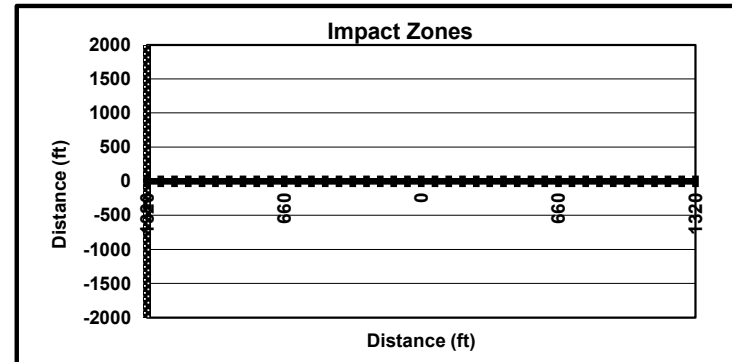
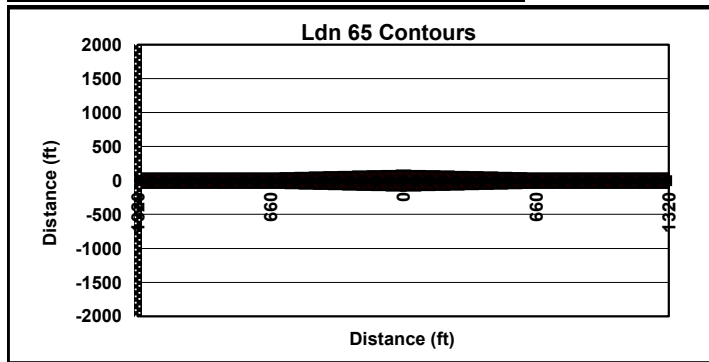
Non Train Noise Environment	
Urban	1
Suburban	2
Rural	3
User Defined Ldn =	50 dBA
	4

Shielding	
Dense Urban	1
Light Urban	2
Dense Suburban	3
Light Suburban	4
Rural	5
No Shielding	6

Length of Impact Area	
1/4 mile	1
20 seconds	2
15 seconds	3

Ldn 65 Contours Numeric Output (in feet)	
Existing 65 Ldn Contour at X-ing	145
Future 65 Ldn Contour at X-ing	145
Existing 65 Ldn Contour at 1/2 zone length	102
Future 65 Ldn Contour at 1/2 zone length	102
Zone Length	1320
1/2 Zone Length	660

Impact Zones Numeric Output (in feet)	
Impact Distance at X-ing	0
Severe Impact Distance at X-ing	0
Impact Distance at 1/2 zone length	0
Severe Impact Distance at 1/2 zone length	0
Zone Length	1320
1/2 Zone Length	660



Noise Model

Noise Model Based on Federal Transit Administration General Transit Noise Assessment
 Developed for Chicago Create Project
 Copyright 2006, HMMH Inc.

Case: Hollister GP Existing and Future Conditions

RESULTS			
Noise Source	Ldn (dB)	Leq - daytime (dB)	Leq - nighttime (dB)
All Sources	65	66	51
Source 1	64	65	51
Source 2	54	56	34
Source 3	0	0	0
Source 4	0	0	0
Source 5	0	0	0
Source 6	0	0	0
Source 7	0	0	0
Source 8	0	0	0

Enter noise receiver land use category below.

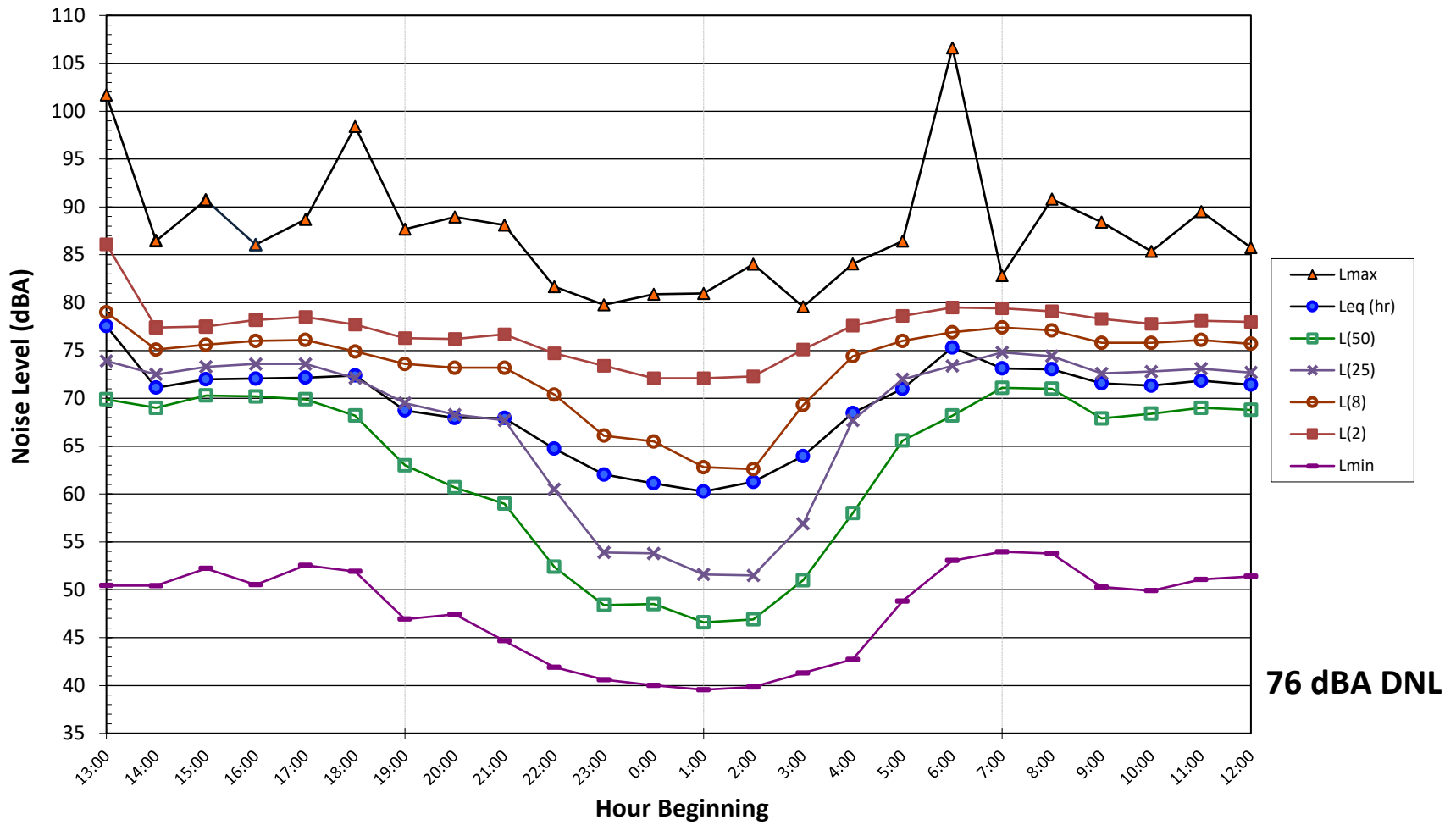
LAND USE CATEGORY	
Noise receiver land use category (1, 2 or 3)	2

Enter data for up to 8 noise sources below - see reference list for source numbers.

NOISE SOURCE PARAMETERS					
Parameter	Source 1		Source 2		Source 3
Source Num.	Freight Locomotive	9	Freight Cars	10	
Distance (source to receiver)	distance (ft)	7	distance (ft)	7	
Daytime Hours (7 AM - 10 PM)	speed (mph)	10	speed (mph)	10	
	trains/hour	0.13	trains/hour	0.13	
	locos/train	2	length of cars (ft) / train	480	
Nighttime Hours (10 PM - 7 AM)	speed (mph)	10	speed (mph)	10	
	trains/hour	0	trains/hour	0	
	locos/train	0	length of cars (ft) / train	0	
Wheel Flats?		0.00%	% of cars w/ wheel flats	0.00%	
Jointed Track?	Y/N	n	Y/N	n	
Embedded Track?	Y/N	n	Y/N	n	
Aerial Structure?	Y/N	n	Y/N	n	
Barrier Present?	Y/N	n	Y/N	n	
Intervening Rows of Buildings	number of rows	0	number of rows	0	

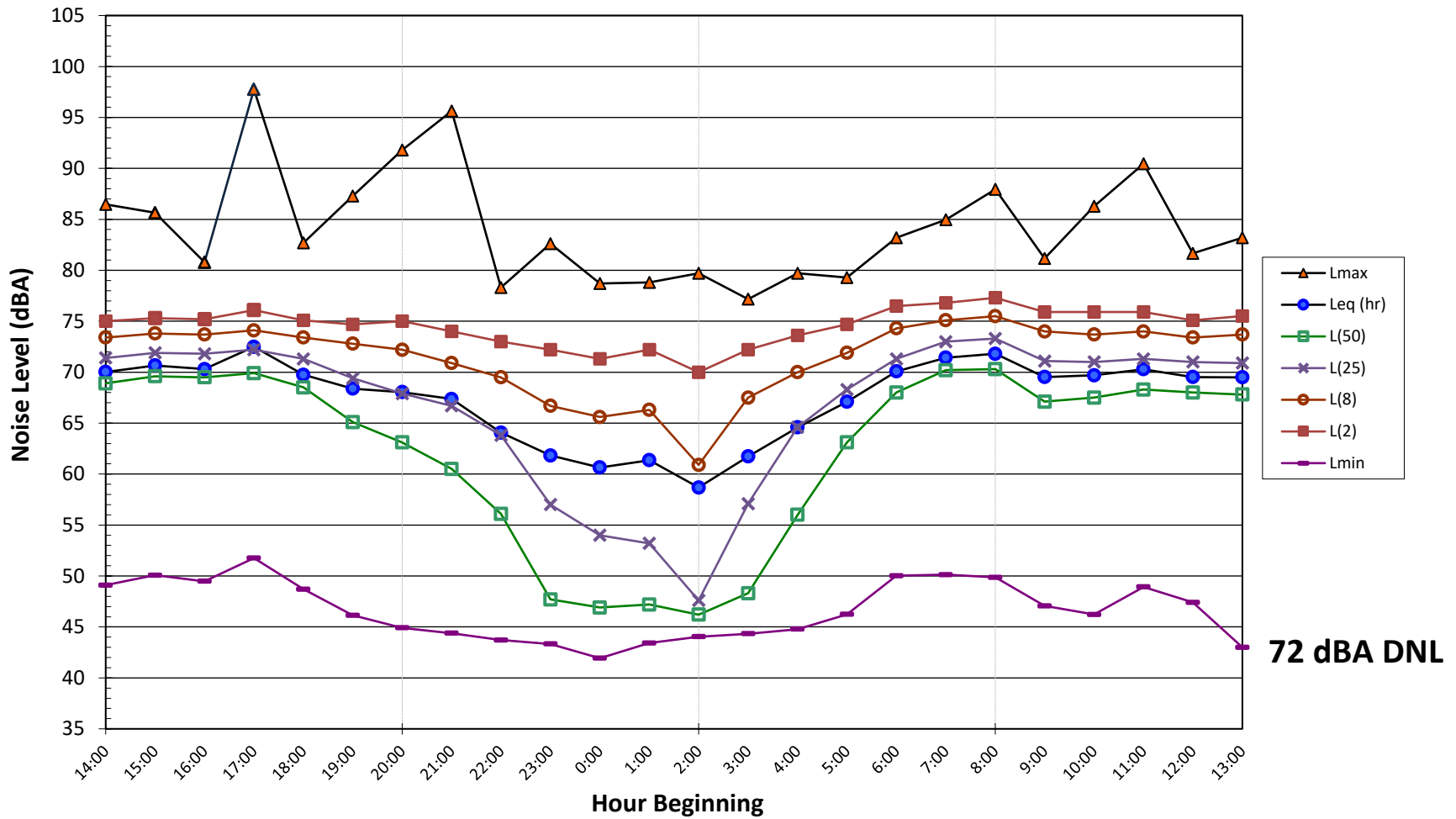
NOISE MONITORING LONG-TERM GRAPHS

Noise Levels at LT-1
1st Street & San Benito Street, Hollister, CA
Monday, January 24 through Tuesday, January 25, 2022



76 dBA DNL

**Noise Levels at LT-2
SR 156B e/o Rajkovich, Hollister, CA
Monday, January 24 through Tuesday, January 25, 2022**



72 dBA DNL

Noise Levels at LT-3
SR-25 s/o Sunnyslope Rd, Hollister, CA
Monday, January 24 through Tuesday, January 25, 2022

