

**Noise & Vibration Study
First Industrial Warehouse at Rider/Redlands
City of Perris**



Prepared for:

Albert Webb Associates
3788 McCray Street,
Riverside, CA 92506

Prepared by:



43410 Business Park Drive
Temecula, CA 92590
(951) 506-0055

April 2021

Table of Contents

1.0 INTRODUCTION	3
1.1 Project Location and Site Description	3
1.2 Project Description	3
2.0 FUNDAMENTALS OF SOUND	7
2.1. Effects of Noise on People	9
2.2. Noise Attenuation	10
2.3. Fundamentals of Vibration.....	10
3.0 REGULATORY FRAMEWORK	12
3.1 Federal Regulations and Standards	12
3.2 Federal Transit Authority Vibration Standards	12
3.2 State Regulations and Standards	13
3.3 Local Regulations and Standards	15
4.0 THRESHOLDS OF SIGNIFICANCE	18
4.1. Perris Valley Commerce Center Specific Plan Thresholds.....	18
4.2. Operational and Construction Thresholds.....	18
5.0 EXISTING NOISE MEASUREMENTS	21
5.1 Measurement Procedure and Criteria	21
5.2 Noise Measurement Locations.....	21
6.0 ANALYSIS METHODS AND PROCEDURES	23
6.1 Construction	24
6.1.1 Noise Analysis Methods	24
6.1.2 Vibration Analysis Methods.....	24
6.2 Operational Noise & Vibration Analysis	24
6.2.1 Operational Traffic Noise Analysis Methods.....	24
6.2.2 Operational Traffic Noise Analysis Inputs.....	24
6.2.3 Operational Traffic Vibration Analysis.....	25
7.0 OFF-SITE TRANSPORTATION NOISE IMPACTS	26
8.0 STATIONARY-RELATED NOISE IMPACTS	29
9.0 OPERATIONAL VIBRATION ANALYSIS.....	34
10.0 SHORT-TERM CONSTRUCTION NOISE & VIBRATION IMPACTS	36
10.1 Noise Sensitive Uses and Construction Noise Standards	36
10.2 Construction Schedule	36
10.3 Construction Noise Levels	37
10.4 Construction Vibration.....	38
10.5 Construction Mitigation Measures	39
11.0 REFERENCES	40
Appendix A Noise Monitoring Data	41
Appendix B-TNM Files	43
Appendix C-RCNM Results	58

List of Figures

Figure 1. Project Vicinity Map	4
Figure 2. Aerial Map.....	5
Figure 3. Site Plan	6
Figure 4. City of Perris Land Use Compatibility Guidelines.....	17
Figure 5. MARB Compatibility Zones	20
Figure 6. Noise Monitoring Location.....	23
Figure 7. Traffic Residential Receiver Locations	27
Figure 8. Operational Residential Receiver Locations	31
Figure 9. Maximum Truck Traffic Vibration Levels vs. Distance	35

List of Tables

Table 2-1. Typical A-Weighted Noise Levels	8
Table 3-1. Construction Vibration Damage Criteria.....	12
Table 3-2. Ground-borne Vibration Impact Criteria for General Assessment.....	13
Table 3-3. California Community Noise Exposure (Ldn or CNEL)	14
Table 5-1. Existing (Ambient) Long-Term (24-hour) Noise Level Measurements ¹	22
Table 6.1 Reference Noise Levels	25
Table 7-1. Traffic Noise Levels Near Sensitive Receiver Locations (dBA, CNEL) ¹	28
Table 8-1. Project Only Operational Noise levels (dBA L _{max})	29
Table 8-2. Project Only Operational Noise levels (dBA L _{eq}) & CNEL.....	30
Table 8-3. Operational Daytime Operational Noise levels (dBA L _{eq}).....	32
Table 8-4. Operational Nighttime Operational Noise levels (dBA L _{eq}).....	33
Table 10-1. Construction Schedule	36
Table 10-2. Equipment by Construction Activity	37
Table 10-3. Construction Noise Levels by Construction Phase	38
Table 10-4. Construction Equipment Vibration Levels	38

1.0 INTRODUCTION

First Industrial Warehouse at Rider/Redlands Avenue (project) is being proposed within the Perris Valley Commerce Center Specific Plan (PVCCSP) planning area in the City of Perris. The project has the potential to generate changes in the existing noise environment. Under the California Environmental Quality Act (CEQA), projects of this type must undergo an environmental review to assess potential impacts. The following noise analysis has been prepared to support the Mitigated Negative Declaration (MND) for the project and to demonstrate consistency with all applicable federal, state, and local noise regulations.

The following noise study describes the project, provides information regarding noise fundamentals, describes the applicable federal, state, and local noise guidelines, characterizes the existing noise environment, provides the study methods and procedures used to perform the traffic noise analysis, and evaluates off-site traffic noise impacts, presents stationary-related noise impacts from loading and unloading activities and construction noise impacts near sensitive residential communities. The project must incorporate the recommended noise mitigation measures presented in the Perris Valley Commerce Center Specific Plan Environmental Impact Report (PVCC SP EIR, July 2011).

1.1 Project Location and Site Description

The project site is located on a partially developed parcel at the intersection of Rider Street and Redlands Avenue in the City of Perris, Riverside County, California. **Figure 1** depicts the project area in a regional context, while **Figure 2** presents the project site. The site is accessible by three driveway entrances, one on Rider Street and the two on Redlands Avenue. Existing structures that currently exist at the project site will be demolished. **Figure 3** provides the proposed site plan of the proposed warehouse.

1.2 Project Description

The project site is located within the Perris Valley Commerce Center Specific Plan (PVCCSP) planning area of the City of Perris. The PVCCSP was adopted in 2012. The project applicant proposes the development of an approximate 324,147 square foot (sf) non-refrigerated warehouse building that includes 8,000 sf office and 4,000 sf mezzanine, on approximately 16.25 gross acres on the southeast corner of Rider Street and Redlands Avenue, in the City of Perris, California. The project site currently comprises of five contiguous parcels, with four out of five parcels containing structures, outbuildings, greenhouses, or storage yards for the previous owners. The project is located within the Perris Valley Commerce Center Specific Plan (PVCC SP) adopted in 2012 and last amended in 2019. The project's water, sewer, recycled water, and storm drain pipelines will connect to existing pipelines along Rider Street and Redlands Avenue's frontage. It is also anticipated that Redlands Avenue and Rider Street will be improved along the project frontage. The speculative warehouse building is assumed to operate 24 hours a day, 7 days a week.

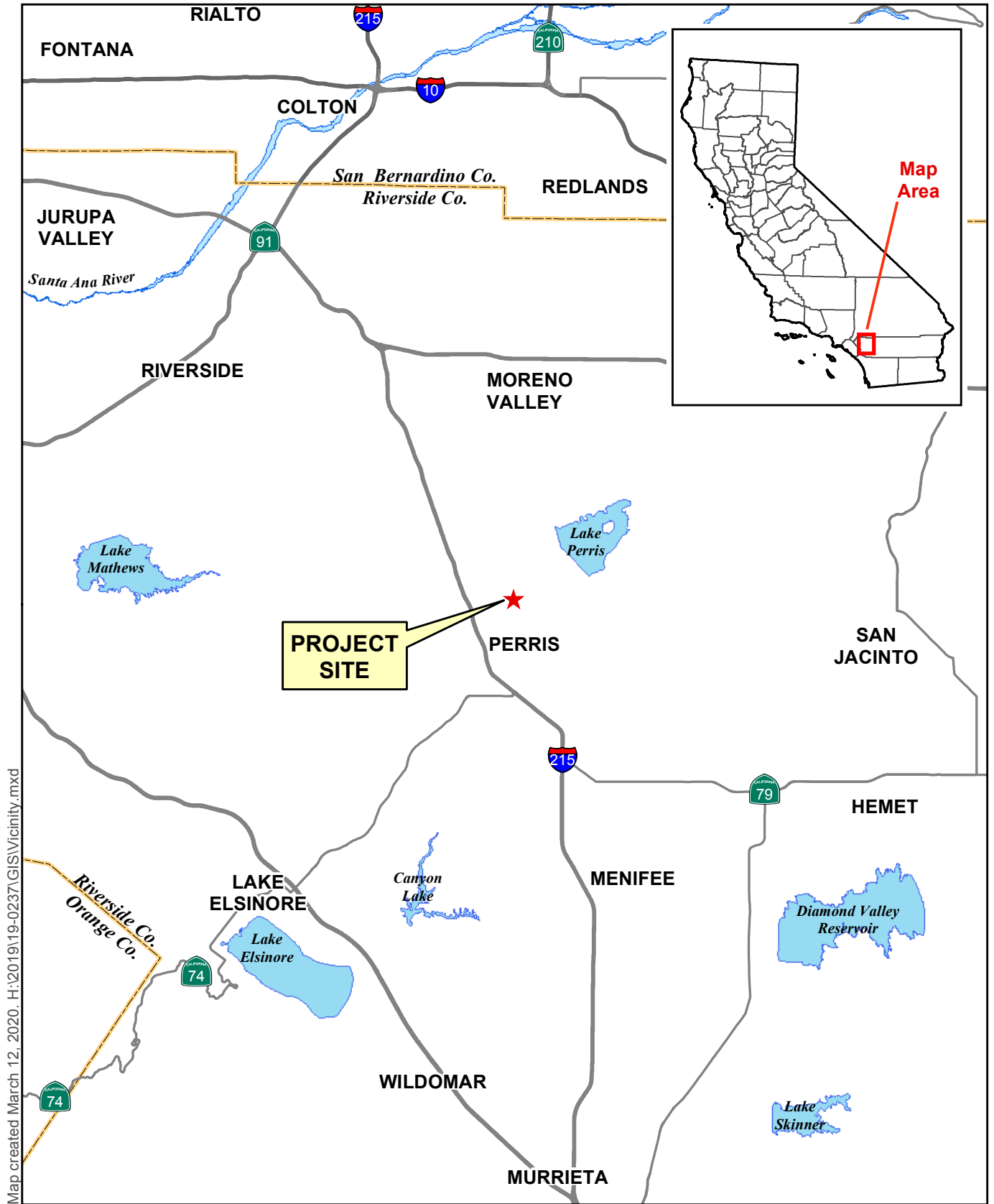
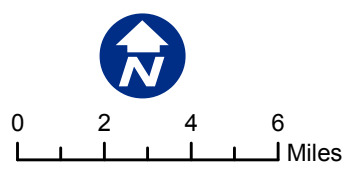


Figure 1 – Vicinity Map
First Industrial Rider





H:\2019\19-0237\GIS\Aerial.mxd; Map created 12 Mar 2020

LEGEND

Project Site

Sources: Riverside Co. GIS, 2020, (parcels, streets) and 2016 (imagery).



0 400 800
 Feet

Figure 2 - Aerial Map
 First Industrial Rider

OWNER/APPLICANT
 FIRST INDUSTRIAL REALTY TRUST
 ATTN: MICHAEL GOODWIN
 2428 N PACIFIC COAST HWY, SUITE 175
 EL SEGUNDO, CA 90245
 TEL: (951) 686-1070
 TEL: (310) 606-1634

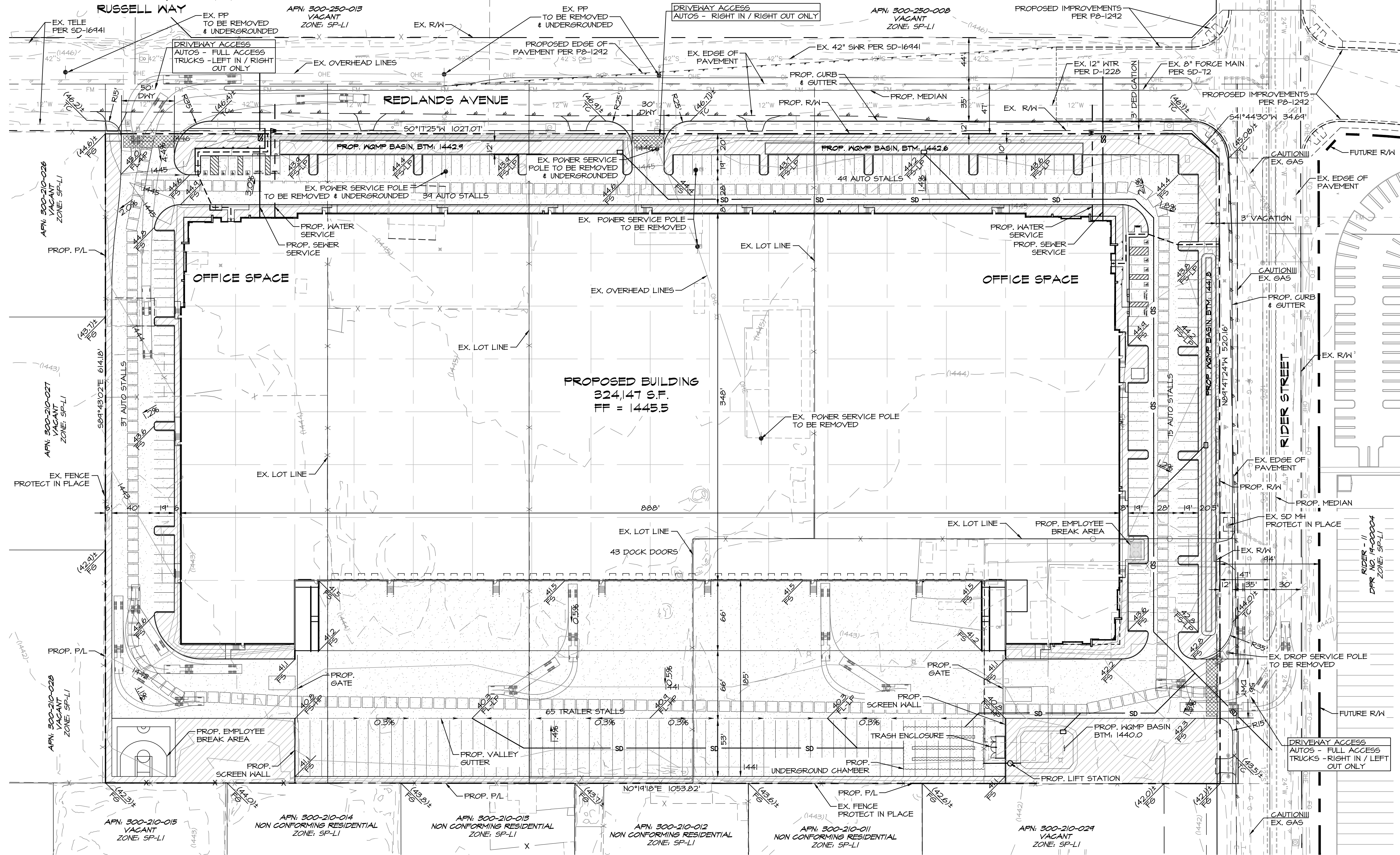
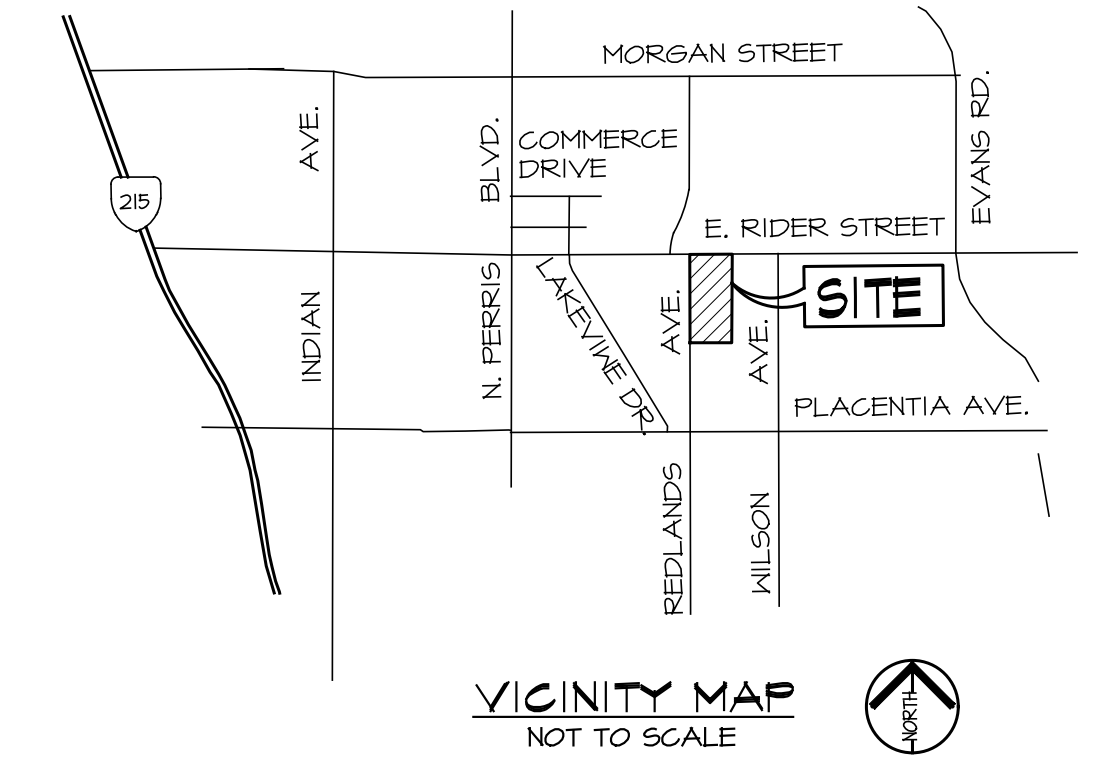
ENGINEER
 ALBERT A. WEBB ASSOCIATES
 ATTN: DJ ARELLANO
 3788 MCCRAY STREET
 RIVERSIDE, CA 92506
 TEL: (951) 686-1070
 FAX: (951) 788-1256

TOPOGRAPHY
 INLAND AERIAL SURVEYS, INC
 ATTN: DEREK C. HOOD
 7117 ARRLINGTON AVENUE, SUITE A
 RIVERSIDE, CA 92503
 TEL: (951) 687-4252
 FAX: (951) 687-4120

ARCHITECT
 RGA
 ATTN: MIKE GILL
 15231 ALTON PARKWAY, SUITE 100
 IRVINE, CA 92618
 TEL: (414) 341-0420
 FAX: (414) 341-0422

DEVELOPMENT PLAN REVIEW NO. 19 - 00016

**FIRST INDUSTRIAL REALTY - RIDER STREET
 CONCEPTUAL GRADING & DRAINAGE PLAN**



PROJECT DATA

ACREAGE			
GROSS SITE AREA:	108,031 S.F.	16.25 A.C.	
STREET DEDICATION:	61,005 S.F.	1.40 A.C.	
NET SITE AREA:	64,102 S.F.	1.48 A.C.	

BUILDING AREA	
OFFICE	8,000 S.F.
WAREHOUSE	312,147 S.F.
MEZZANINE	4,000 S.F.
FOOTPRINT	320,147 S.F.
TOTAL AREA*	324,147 S.F.

LOT COVERAGE, PROPOSED: 49.47% MAX. ALLOWED: 50%

PARKING REQUIREMENTS	
IST. 20K @ 11,000 S.F.	20 STALLS
ABOVE 20K @ 17,000 S.F.	81 STALLS
TOTAL PARKING REQUIRED	101 STALLS

PARKING PROVIDED	
AUTO	
STANDARD (9'x14')	142 STALLS
HANDICAP (9'x14')	8 STALLS
TOTAL AUTO:	200 STALLS
TRAILER (10'x53') PROVIDED	65 STALLS

LANDSCAPED AREA	
LANDSCAPED AREA REQUIRED:	12%
LANDSCAPED AREA PROVIDED:	12.6%
LANDSCAPED AREA PROVIDED:	81,804 S.F.

EARTHWORK ESTIMATE:

CUT:	82,360 CY
FILL:	86,060 CY
SHRINKAGE:	3,100 CY
NET:	0 CY (BALANCED)

LEGEND

PROPOSED CONCRETE PAVEMENT	EXISTING CONTOURS
PROPOSED LANDSCAPE AREA	PROPOSED CONTOURS
PROPOSED DECORATIVE PAVEMENT	EXISTING WATER LINE
FIRE ACCESS LANE	EXISTING SEWER LINE
ADA PATH OF TRAVEL	EXISTING STORM DRAIN
SCREEN WALL	EXISTING GAS LINE
FENCE LINE	EXISTING ELECTRICAL LINE
GRADEBREAK/RIDGELINE	FF FINISHED FLOOR
FIRE LINE	F6 FINISHED GROUND
FIRE LINE	F0 FINISHED SURFACE
	FL FLOW LINE
	GB GRADE BREAK
	INV INVERT
	LS LANDSCAPE AREA
	LP LOW POINT
	MAX MAXIMUM
	FL PROPERTY LINE
	R/W RIGHT OF WAY
	TYP TYPICAL
	DM DRIVEWAY
	RL RIDGELINE

LEGAL DESCRIPTION

THIS PROPERTY SURVEYED AND SHOWN HEREON IS THE SAME PROPERTY AS DESCRIBED IN SCHEDULE A OF FIRST AMERICAN TITLE INSURANCE COMPANY COMMITMENT NO. NC5-965175-CH12 WITH COMMITMENT DATE OF JUNE 03, 2019.

THE LAND REFERRED TO HEREIN BELOW IS SITUATED IN THE CITY OF FERRIS, COUNTY OF RIVERSIDE, STATE OF CALIFORNIA, AND IS DESCRIBED AS FOLLOWS:

PARCEL 2 AS SHOWN ON PARCEL MAP 7470, IN THE CITY OF FERRIS, COUNTY OF RIVERSIDE, STATE OF CALIFORNIA, RECORDED JULY 21, 1971 IN BOOK 37, PAGE 54 OF PARCEL MAPS, THE OFFICE OF THE COUNTY RECORDER OF SAID COUNTY.

FOR CONVEYANCING PURPOSES ONLY: APN 300-210-002-4

PROJECT DESCRIPTION

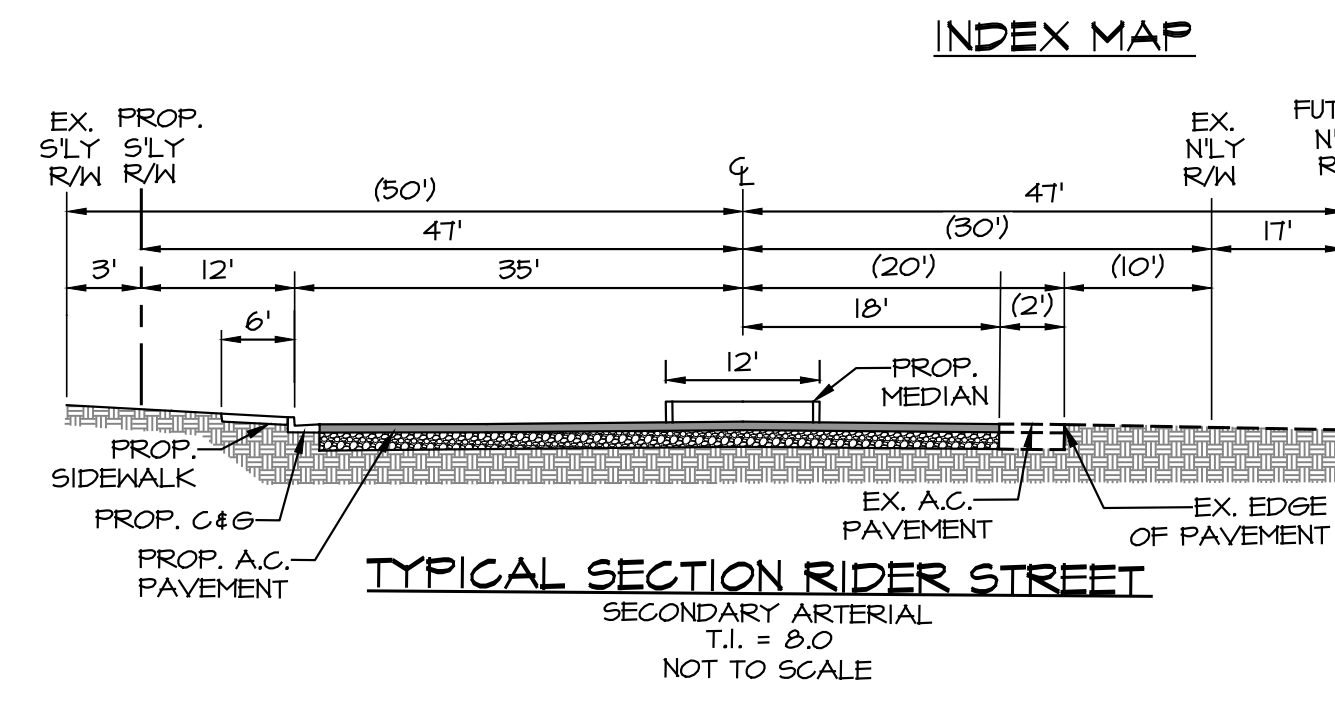
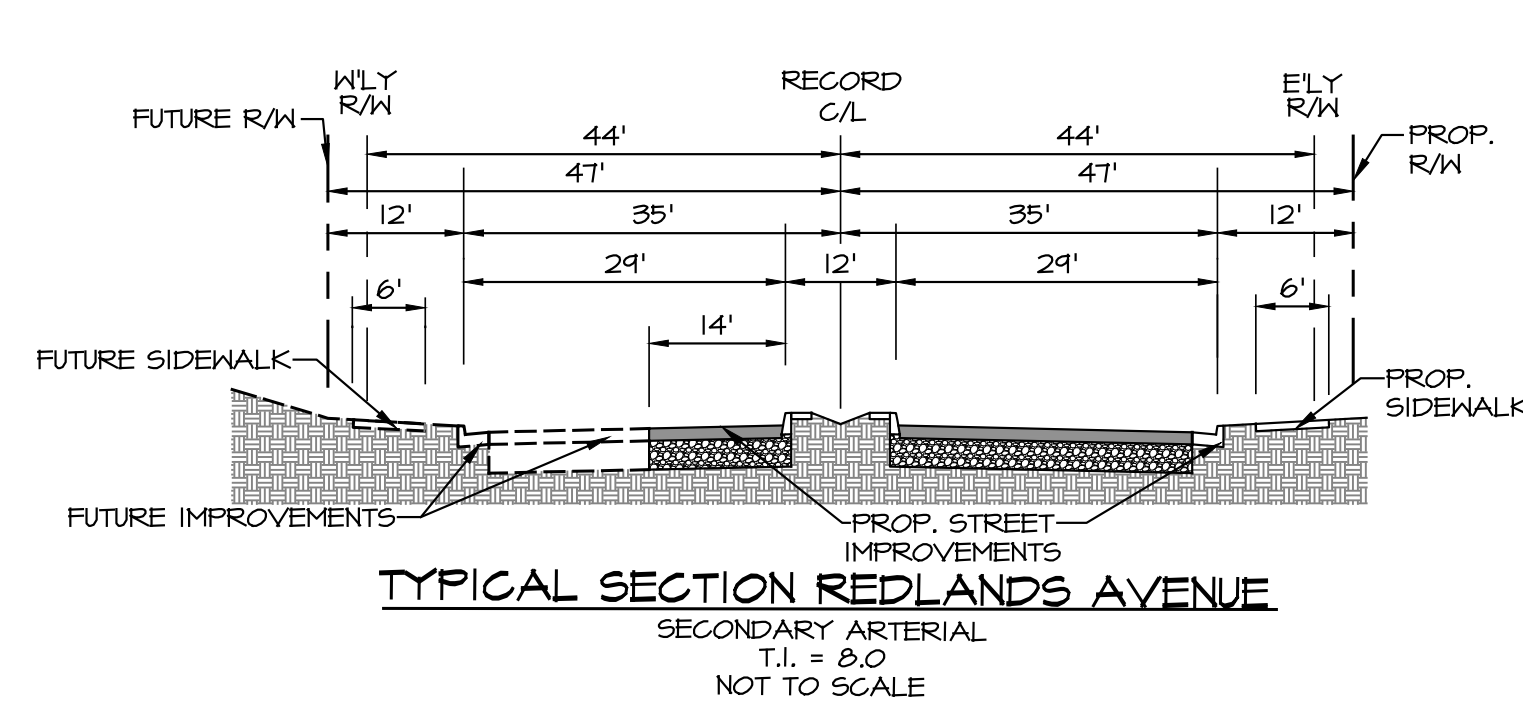
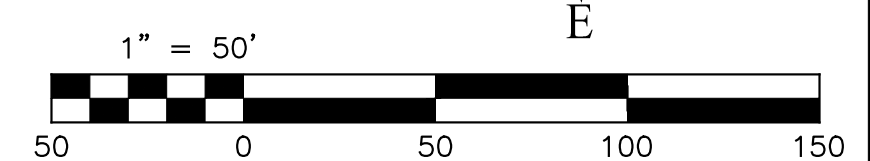
DEVELOPMENT PLAN REVIEW FOR A NEW INDUSTRIAL WAREHOUSE BUILDING TOTALING 324,147 SQUARE FEET ON 14.85± NET ACRES.

LAND USE

EXISTING/PROPOSED ZONING: SP-LI
 EXISTING/PROPOSED GENERAL PLAN USE: SP-LI
 EXISTING LAND USE: LOW DENSITY RESIDENTIAL/VACANT
 PROPOSED LAND USE: WAREHOUSE DISTRIBUTION

APN

300-210-001, 300-210-002, 300-210-003, 300-210-004, 300-210-005



NOTES:

- 2005 THOMAS BROTHERS MAP, PAGE TTI, GRID H-3 #H-4.
- THIS AREA IS SUBJECT TO LOW TO MODERATE LIQUEFACTION AND IS SUSCEPTIBLE TO SUBSIDENCE.
- THIS AREA IS WITHIN THE FERRIS VALLEY COMMERCE SPECIFIC PLAN.
- THIS PROJECT IS NOT WITHIN A COMMUNITY SERVICES DISTRICT.
- THIS PROJECT IS WITHIN THE AIRPORT COMPATIBILITY ZONES C-1 & B-2.
- FEMA COMMUNITY PANEL NO. 06065C1430H, ZONE X.
- ALL EXISTING STRUCTURES WILL BE DEMOLISHED.

UTILITY COMPANIES:

- WATER: EASTERN MUNICIPAL WATER DISTRICT
PHONE: (800) 426-3643
- SEWER: EASTERN MUNICIPAL WATER DISTRICT
PHONE: (800) 426-3643
- ELECTRIC: SOUTHERN CALIFORNIA EDISON COMPANY
PHONE: (800) 684-8123
- TELEPHONE: CHARTER COMMUNICATIONS
PHONE: (833) 644-4254
- GAS: SOUTHERN CALIFORNIA GAS COMPANY
PHONE: (800) 427-2200
- SCHOOL: VAL VERDE UNIFIED SCHOOL DISTRICT
PHONE: (951) 940-6100

ALBERT A. WEBB ASSOCIATES
 ENGINEERING CONSULTANTS
 3788 MCCRAY STREET
 RIVERSIDE, CA 92506
 PH. (951) 686-1070
 FAX (951) 788-1256

SCALE AS SHOWN
 DATE: 1/15/20
 DESIGNED: EA
 CHECKED: DJA
 PLN CK REF: F.B.

PLOT DATE: 11-Jun-20

CITY OF FERRIS
 DEVELOPMENT PLAN REVIEW NO. 19-00016
 FIRST INDUSTRIAL REALTY - RIDER STREET

W.D. 2019-0187
 SHEET 1
 OF 1 SHEETS
 DWG. NO.

2.0 FUNDAMENTALS OF SOUND

Sound is mechanical energy transmitted by pressure waves in a compressible medium such as air. Noise is generally defined as unwanted or excessive sound, which can vary in intensity by over one million times within the range of human hearing; therefore, a logarithmic scale, known as the decibel scale (dB), is used to quantify sound intensity. Community noise varies continuously over a period of time with respect to the contributing sound sources of the community noise environment. Community noise is primarily the product of many distant noise sources, which constitute a relatively stable background noise exposure, with the individual contributors unidentifiable. As such, background noise level changes throughout a typical day, corresponding with the addition and subtraction of distant noise sources such as traffic and single-event noise sources (e.g., aircraft flyovers, motor vehicles, sirens), which are readily identifiable to the individual.

Because the noise environment is continually changing, average noise over a period of time is generally used to describe the community noise environment, which requires the measurement of noise over a period of time to accurately characterize a community noise environment. This time-varying characteristic of environmental noise is described using various noise descriptors, which are defined below:

- L_{eq}:** The L_{eq}, or equivalent sound level, is used to describe noise over a specified period of time in terms of a single numerical value; the L_{eq} of a time-varying signal and that of a steady signal are the same if they deliver the same acoustic energy over a given time. The L_{eq} may also be referred to as the average sound level.
- L_{max}:** The maximum instantaneous noise level experienced during a given period of time.
- L_{min}:** The minimum instantaneous noise level experienced during a given period of time.
- L_x:** The noise level exceeded a percentage of a specified time period. The “x” represents the percentage of time a noise level is exceeded. For instance, L₅₀ and L₉₀ represent the noise levels that are exceeded 50 percent and 90 percent of the time, respectively.
- L_{dn}:** Also termed the day-night average noise level (DNL), the L_{dn} is the average A-weighted noise level during a 24-hour day, obtained after the addition of 10 dBA to measured noise levels between the hours of 10:00 pm to 7:00 am to account for nighttime noise sensitivity.
- CNEL:** CNEL, or Community Noise Equivalent Level, is the average A-weighted noise level during a 24-hour day that is obtained after the addition of 5 dBA to measured noise levels between the hours of 7:00 pm to 10:00 pm and after the addition of 10 dBA to noise levels between the hours of 10:00 pm to 7:00 am to account for noise sensitivity in the evening and nighttime, respectively.

In addition, the sound is characterized by both its amplitude and frequency (or pitch). The human ear does not hear all frequencies equally. In particular, the ear deemphasizes low and very high frequencies. To approximate the sensitivity of human hearing, the A-weighted decibel scale (dBA) is

used. On this scale, the human range of hearing extends from approximately 3 dBA to around 140 dBA. **Table 2-1** includes examples of A-weighted noise levels from common indoor and outdoor activities.

Table 2-1. Typical A-Weighted Noise Levels

Common Outdoor Noise	Noise Level (dBA)	Common Indoor Noise
	— 110 —	Rock band (noise to some, music to others)
Jet fly-over at 1000 feet		
	— 100 —	
Gas lawn mower at 3 feet		
	— 90 —	
Diesel truck at 50 feet at 50 mph		Food blender at 3 feet
	— 80 —	Garbage disposal at 3 feet
Noisy urban area, daytime		
Gas lawn mower, 100 feet	— 70 —	Vacuum cleaner at 10 feet
Commercial area		Normal speech at 3 feet
Heavy traffic at 300 feet	— 60 —	
		Large business office
Quiet urban daytime	— 50 —	Dishwasher in a neighboring room
Quiet urban nighttime	— 40 —	Theater, large conference room (background)
Quiet suburban nighttime		
	— 30 —	Library
Quiet rural nighttime		Bedroom at night
	— 20 —	
		Broadcast/recording studio
	— 10 —	
Lowest threshold of human hearing	— 0 —	Lowest threshold of human hearing

SOURCE: Caltrans, 1998.

Using the decibel scale, sound levels from two or more sources cannot be directly added together to determine the overall sound level. Rather, the combination of two sounds at the same level yields an increase of 3 dBA. The smallest recognizable change in sound levels is approximately 1 dBA. A 3-dBA increase is generally considered perceptible, whereas a 5-dBA increase is readily perceptible. Most people judge a 10-dBA increase as an approximate doubling of the sound loudness.

Two of the primary factors that reduce levels of environmental sounds are increasing the distance between the sound source to the receiver and having intervening obstacles such as walls, buildings, or terrain features between the sound source and the receiver. Factors that act to increase the loudness of environmental sounds include moving the sound source closer to the receiver, sound enhancements caused by reflections, and focusing caused by various meteorological conditions.

2.1. Effects of Noise on People

Noise is generally loud, unpleasant, unexpected, or undesired sound that is typically associated with human activity that is a nuisance or disruptive. The effects of noise on people can be placed into four general categories:

- Subjective effects (e.g., dissatisfaction, annoyance)
- Interference effects (e.g., communication, sleep, and learning interference)
- Physiological effects (e.g., startle response)
- Physical effects (e.g., hearing loss)

Although exposure to high noise levels has been demonstrated to cause physical and physiological effects, the principal human responses to typical environmental noise exposure are related to subjective effects and interference with activities. Interference effects refer to interruption of daily activities and include interference with human communication activities, such as normal conversations, watching television, telephone conversations, and interference with sleep. Sleep interference effects can consist of both awakening and arousal to a lesser state of sleep. With regard to the subjective effects, the responses of individuals to similar noise events are diverse. They are influenced by many factors, including the type of noise, the perceived importance of the noise, the appropriateness of the noise to the setting, the duration of the noise, the time of day, and the type of activity during which the noise occurs, and individual noise sensitivity.

Overall, a wide variation of tolerance to noise exists, based on an individual's past experiences with sound. Thus, an important way of predicting a human reaction to a new noise environment is the way it compares to the existing environment to which one has adapted (i.e., comparison to the ambient noise environment). In general, the more a new noise level exceeds the previously existing ambient noise level, the less acceptable the new noise level will be judged by those hearing it. With regard to increases in A-weighted noise level, the following relationships generally occur:

- Except in carefully controlled laboratory experiments, a change of 1 dBA cannot be perceived.
- A 3 dBA change in noise levels is considered to be a barely perceivable difference outside of the laboratory.
- A change in noise levels of 5 dBA is considered to be a readily perceivable difference.
- A change in noise levels of 10 dBA is subjectively heard as doubling of the perceived loudness.

These relationships occur in part because of the logarithmic nature of sound and the decibel system. The human ear perceives sound in a non-linear fashion; hence the decibel scale was developed.

Because the decibel scale is based on logarithms, two noise sources do not combine in a simple additive fashion but rather logarithmically. For example, if two identical noise sources produce noise levels of 50 dBA, the combined sound level would be 53 dBA, not 100 dBA.

2.2. Noise Attenuation

Stationary point sources of noise, including stationary, mobile sources such as idling vehicles, attenuate (lessen) at a rate between 6 dBA for hard sites and 7.5 dBA for soft sites for each doubling of distance from the reference measurement. Hard sites are those with a reflective surface between the source and the receiver, such as asphalt or concrete surfaces or smooth bodies of water. No excess ground attenuation is assumed for hard sites, and the changes in noise levels with distance (drop-off rate) are simply the geometric spreading of the noise from the source. Soft sites have an absorptive ground surface such as soft dirt, grass, or scattered bushes and trees. In addition to geometric spreading, an excess ground attenuation value of 1.5 dBA (per doubling distance) is normally assumed for soft sites. Noise from line sources (such as traffic noise from vehicles) attenuates at a rate between 3 dBA for hard sites and 4.5 dBA for soft sites for each doubling of distance from the reference measurement (Caltrans 2013).

Physical barriers between the noise source and the receiving property are also useful in reducing noise levels. Effective noise barriers can lower noise levels by 10 to 15dBA. A noise barrier is more effective when it's placed closest to the noise source or receiver, depending upon site geometry. However, there is a limitation on the effectiveness of a noise barrier. Noise barriers must block the line of sight between the receiving property and the noise source. When this occurs, a noise barrier can achieve a 5-dBA noise level reduction. This may require the noise barrier to be sufficiently long and high enough to block the view of a road to reduce traffic noise.

2.3. Fundamentals of Vibration

Vibration is energy transmitted in waves through the ground or man-made structures. These energy waves generally dissipate with distance from the vibration source. Familiar sources of ground-borne vibration are trains, buses on rough roads, and construction activities such as blasting, pile-driving, and operation of heavy earth-moving equipment. As described in the Federal Transit Administration's (FTA) Transit Noise and Vibration Impact Assessment (FTA 2006), ground-borne vibration can be a serious concern for nearby neighbors of a transit system route or maintenance facility causing buildings to shake and rumbling sounds to be heard.

Several different methods are used to quantify vibration. The peak particle velocity (PPV) is defined as the maximum instantaneous peak of the vibration signal. The PPV is most frequently used to describe vibration impacts to buildings. The root mean square (RMS) amplitude is most frequently used to describe the effect of vibration on the human body. The RMS amplitude is defined as the average of the squared amplitude of the signal. Decibel notation (VdB) is commonly used to measure RMS. The relationship of PPV to RMS velocity is expressed in terms of the "crest factor," defined as the ratio of the PPV amplitude to the RMS amplitude. Peak particle velocity is typically a factor of 1.7 to 6 times greater than RMS vibration velocity (FTA 2006). The decibel notation acts to compress the range of numbers required to describe vibration. Typically, ground-borne vibration generated by man-made activities attenuates rapidly with distance from the source of the vibration. Sensitive

receptors for vibration include structures (especially older masonry structures), people (especially residents, the elderly, and sick), and vibration-sensitive equipment.

The effects of ground-borne vibration include movement of the building floors, rattling of windows, shaking of items on shelves or hanging on walls, and rumbling sounds. In extreme cases, the vibration can cause damage to buildings. Building damage is not a factor for most projects, with the occasional exception of blasting and pile-driving during construction. Annoyance from vibration often occurs when the vibration levels exceed the threshold of perception by only a small margin. A vibration level that causes annoyance will be well below the damage threshold for normal buildings. The FTA measure of the threshold of architectural damage for conventional sensitive structures is 0.2 in/sec PPV (FTA 2006).

In residential areas, the background vibration velocity level is usually around 50 VdB (approximately 0.0013 in/sec PPV). This level is well below the vibration velocity level threshold of perception for humans, which is approximately 65 VdB. A vibration velocity level of 75 VdB is considered to be the approximate dividing line between barely perceptible and distinctly perceptible levels for many people (FTA 2006).

3.0 REGULATORY FRAMEWORK

The project's governing regulatory framework within the City of Perris includes federal, state, and local noise and vibration standards. These standards are summarized below.

3.1 Federal Regulations and Standards

There are no federal noise standards that directly regulate environmental noise related to the construction or operation of the project. With regard to noise exposure and workers, the Office of Safety and Health Administration (OSHA) regulations safeguard the hearing of workers exposed to occupational noise. Federal regulations also establish noise limits for medium and heavy trucks (more than 4.5 tons, gross vehicle weight rating) under 40 Code of Federal Regulations (CFR), Part 205, Subpart B. The federal truck pass-by noise standard is 80 dBA at 15 meters (approximately 50 feet) from the vehicle pathway centerline. These controls are implemented through regulatory restrictions on truck manufacturers.

3.2 Federal Transit Authority Vibration Standards

The City of Perris does not have vibration standards for evaluating building damage. In lieu of specific vibration criteria, FTA vibration criteria will be utilized as a guide. The FTA has adopted vibration standards to evaluate potential building damage impacts related to construction activities. The vibration damage criteria adopted by the FTA are shown in **Table 3-1**.

Table 3-1. Construction Vibration Damage Criteria

Building Category	PPV (in/sec)
I. Reinforced-concrete, steel, or timber (no plaster)	0.5
II. Engineered concrete and masonry (no plaster)	0.3
III. Non-engineered timber and masonry buildings	0.2
IV. Buildings extremely susceptible to vibration damage	0.12
SOURCE: FTA, 2006.	

The FTA has also adopted the following standards for ground-borne vibration impacts related to human annoyance: Vibration Category 1 – High Sensitivity, Vibration Category 2 – Residential, and Vibration Category 3 – Institutional. The FTA defines Category 1 as buildings where vibration would interfere with operations, such as vibration-sensitive research and manufacturing facilities, hospitals with vibration-sensitive equipment, and research operations. Category 2 refers to all residential land uses and any buildings where people sleep, such as hotels and hospitals. Category 3 refers to

institutional land uses such as schools, churches, other institutions, and quiet offices that do not have vibration-sensitive equipment but still have the potential for activity interference. The vibration thresholds associated with human annoyance for these three land-use categories are shown in **Table 3-2**. No thresholds have been adopted or recommended for industrial, commercial, and office uses.

Table 3-2. Ground-borne Vibration Impact Criteria for General Assessment

Land Use Category	Frequent Events ^a	Occasional Events ^b	Infrequent Events ^c
Category 1: Buildings where vibration would interfere with interior operations.	65 VdB ^d	65 VdB ^d	65 VdB ^d
Category 2: Residences and buildings where people normally sleep.	72 VdB	75 VdB	80 VdB
Category 3: Institutional land uses with primarily daytime use.	75 VdB	78 VdB	83 VdB
^a Frequent Events” is defined as more than 70 vibration events of the same source per day. ^b Occasional Events” is defined as between 30 and 70 vibration events of the same source per day. ^c Infrequent Events” is defined as fewer than 30 vibration events of the same kind per day. ^d This criterion is based on levels that are acceptable for most moderately sensitive equipment such as optical microscopes. SOURCE: FTA, 2006			

3.2 State Regulations and Standards

Noise Standards

The California Department of Health Services has established guidelines for land use and noise exposure compatibility that are listed in **Table 3-3**. In addition, the California Government Code (Section 65302(g)) requires a noise element to be included in general plans and requires that the noise element: (1) identify and appraise noise problems in the community; (2) recognize Office of Noise Control guidelines; and (3) analyze and quantify current and projected noise levels.

Table 3-3. California Community Noise Exposure (Ldn or CNEL)

Land Use	Normally Acceptable ^a	Conditionally Acceptable ^b	Normally Unacceptable ^c	Clearly Unacceptable ^d
Single-family, Duplex, Mobile Homes	50 - 60	55 - 70	70 - 75	above 75
Multi-Family Homes	50 - 65	60 - 70	70 - 75	above 75
Schools, Libraries, Churches, Hospitals, Nursing Homes	50 - 70	60 - 70	70 - 80	above 80
Transient Lodging – Motels, Hotels	50 - 65	60 - 70	70 - 80	above 75
Auditoriums, Concert Halls, Amphitheaters	---	50 - 70	---	above 70
Sports Arena, Outdoor Spectator Sports	---	50 - 75	---	above 75
Playgrounds, Neighborhood Parks	50 - 70	---	67 - 75	above 75
Golf Courses, Riding Stables, Water Recreation, Cemeteries	50 - 75	---	70 - 80	above 80
Office Buildings, Business, and Professional Commercial	50 - 70	67 - 77	above 75	---
Industrial, Manufacturing, Utilities, Agriculture	50 - 75	70 - 80	above 75	---

a Normally Acceptable: Specified land use is satisfactory, based upon the assumption that any buildings involved are of normal conventional construction without any special noise insulation requirements.

b Conditionally Acceptable: New construction or development should be undertaken only after a detailed analysis of the noise reduction requirements is made and needed noise insulation features included in the design. Conventional construction, but with closed windows and fresh air supply systems or air conditioning, will normally suffice.

c Normally Unacceptable: New construction or development should generally be discouraged. If new construction or development does proceed, a detailed analysis of the noise reduction requirements must be made and needed noise insulation features included in the design.

d Clearly Unacceptable: New construction or development should generally not be undertaken.

SOURCE: FTA, 2006.

The State of California has noise limits for vehicles licensed to operate on public roads. For heavy trucks, the state pass-by standard is consistent with the federal limit of 80 dBA. The state pass-by standard for light trucks and passenger cars (less than 4.5 tons, gross vehicle rating) is also 80 dBA at 15 meters (50 feet) from the centerline. These standards are implemented through controls on vehicle manufacturers and by state and local law enforcement officials' legal sanctions.

3.3 Local Regulations and Standards

City of Perris Municipal Code

The City of Perris Municipal Code, Chapter 19.44 (Industrial Zones) Section 19.44.070 b(1) and b(2), outlines performance standards for Industrial uses as follows;

- Noise generated on-site shall be controlled for compatibility with surrounding land uses. Any proposed use that may generate noise during evening hours (7:00 pm to 7:00 am) must submit a detailed noise assessment and plan to address and mitigating potential noise impacts.
- Vibrations generated on-site shall not be detectable off-site. Any proposed use that may generate vibrations detectable off-site must submit a detailed vibration assessment and plan to address and mitigate potential impacts.

The City of Perris Municipal Code, under Chapter 7.34 (Noise Control), provides the local government ordinance relative to community noise level exposure, guidelines, and regulations.

The City of Perris Municipal Code, Chapter 7.34 *Noise Control*, Section 7.34.040, establishes the following permissible noise levels that may intrude into a neighbor's property from the use of sound-amplifying equipment. The maximum permissible noise level shall not exceed 60 dBA during the hours of 10:01 pm to 7:00 am, and 80 dBA between the house or 7:01 am to 10:00 pm at the property line of the affected residential land use

The Municipal Code exterior noise level criteria for residential properties affected by operational noise sources are included in Section 7.34.050 *General Prohibition*, which states that the Section 7.34.040 sound-amplifying equipment noise standards shall apply.

Construction Noise Levels Pursuant to Section 7.34.060 (Construction Noise), the construction, demolition, excavation, alteration, or repair of any building or structure in such a manner as to create disturbing, excessive, or offensive noise is prohibited between the hours of 7:00 pm, and 7:00 am, on Sundays, and a legal holiday. Construction activity shall not exceed 80 dBA Lmax in residential zones within the city.

City of Perris General Plan

The City of Perris General Plan Noise Element includes Land Use/Noise Compatibility Guidelines, as shown in **Figure 4** (on page 17), which generally establishes acceptable exterior noise levels for specified land uses.

Under Policy V.A, the City of Perris General Plan states that new large-scale commercial or industrial facilities located within 160 feet of sensitive land uses shall mitigate noise impacts to attain an acceptable level as required by the State of California Noise/Land Use Compatibility Criteria. Under this policy, the City of Perris General Plan Noise Element lists Implementation Measure V.A.1. This

implementation measure requires an acoustical impact analysis to be prepared for new industrial and large-scale commercial facilities that are constructed within 160 feet of the property line of any existing noise-sensitive land use. This analysis shall document the nature of the commercial or industrial facility and all interior or exterior facility operations that would generate exterior noise. The analysis shall document the placement of any existing or proposed noise-sensitive land uses situated within the 160-foot distance. The analysis shall determine the potential noise levels that could be received at these sensitive land uses and specify specific measures to be employed by the large-scale commercial or industrial facility to ensure that these levels do not exceed 60 dBA CNEL at the property line of the adjoining sensitive land use. No development permits or approval of land use applications shall be issued until the acoustic analysis is received and approved by the City Staff.

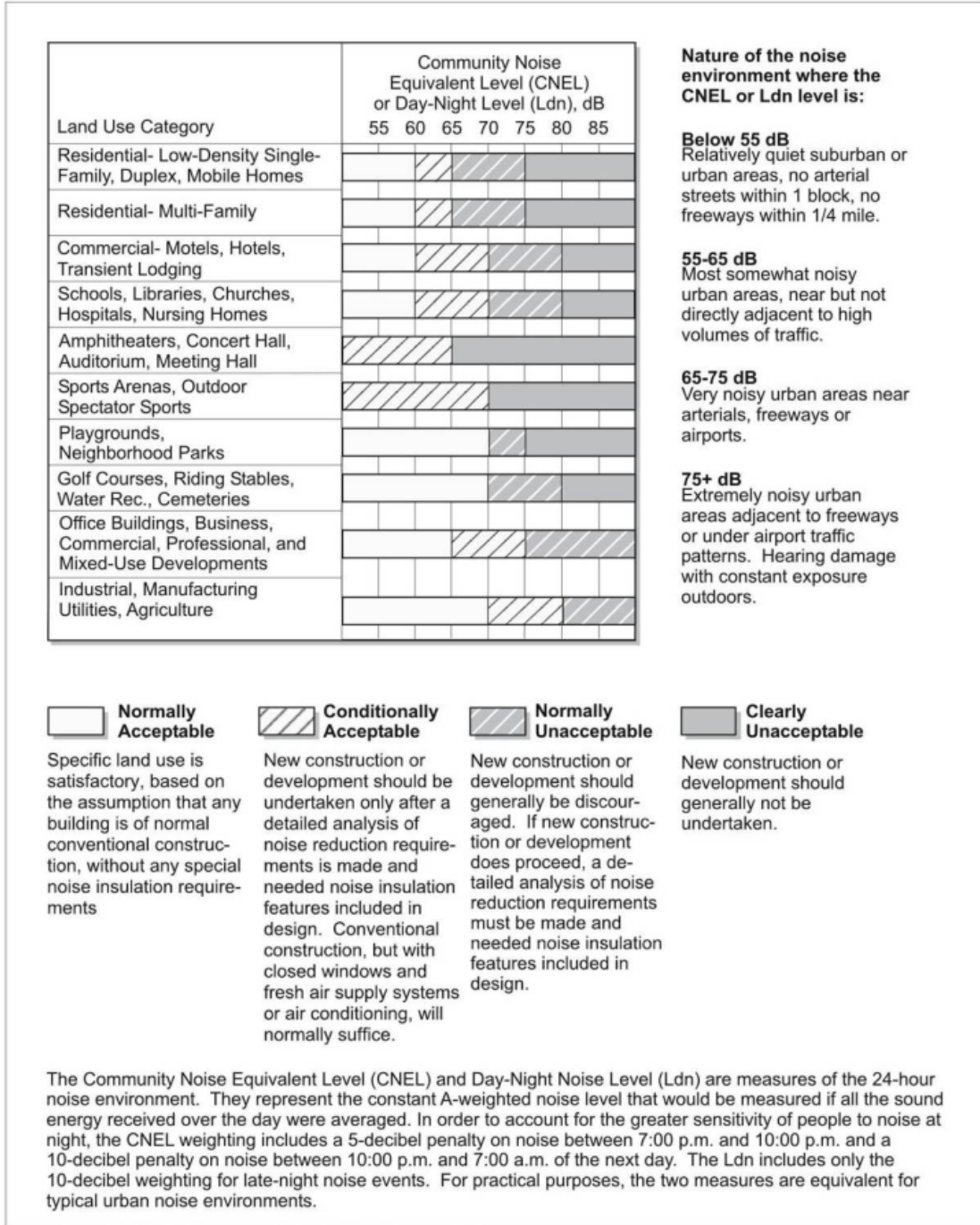


Figure 4. City of Perris Land Use Compatibility Guidelines

4.0 THRESHOLDS OF SIGNIFICANCE

Appendix G of the 2019 California Environmental Quality Act (CEQA) Guidelines states that a project could have a noise impact if any of the following would occur:

- a) Generation of a substantial temporary or permanent increase in ambient noise levels in the vicinity of the project in excess of standards established in the local general plan or noise ordinance or applicable standards of other agencies?
- b) Generation of excessive ground-borne vibration or ground-borne noise levels?
- c) For a project located within the vicinity of a private airstrip or an airport land use plan or, where such a plan has not been adopted, within two miles of a public airport or public use airport, would the project expose people residing or working in the project area to excessive noise levels?

4.1. Perris Valley Commerce Center Specific Plan Thresholds

While the CEQA Guidelines and the City of Perris General Plan Guidelines provide direction on noise compatibility and establish noise standards by land-use type, CEQA thresholds are not defined for the levels at which increases are considered substantial. However, according to the PVCC SP Environmental Impact Report (EIR), *there is no official "industry standard" of determining the significance of noise impacts. However, typically, a jurisdiction will identify either 3 dBA or 5 dBA increase as being the threshold because these levels represent varying levels of perceived noise increases* (page 4.9-20, PVCC SP EIR, July 2011).

The PVCC SP EIR indicates that a 5-dBA noise level increase is considered *discernable to most people in an exterior environment* when the existing noise levels are below 60 dBA. Further, it identifies a 3-dBA increase threshold when the existing ambient noise levels already exceed 60 dBA (page 4.9-20, PVCC SP EIR, July 2011).

4.2. Operational and Construction Thresholds

Noise levels exceed CEQA thresholds if any of the following occur due to the proposed development.

OFF-SITE TRAFFIC NOISE

Traffic noise impacts exceed the CEQA thresholds when the resulting noise levels at noise-sensitive land uses (e.g., residential, etc.):

- are less than 60 dBA CNEL and the project creates a 5 dBA CNEL or greater project-related noise level increase (PVCC SP EIR, Page 4.9-20); or
- exceed 60 dBA CNEL, and the project creates a 3 dBA CNEL or greater project-related noise level increase (PVCC SP EIR, Page 4.9-20).

OPERATIONAL NOISE AND VIBRATION

The noise CEQA threshold is exceeded if one of the following occurs:

- Project-related operational noise levels resulting from stationary sources, such as on-site noise such as idling trucks, delivery truck activities, backup alarms, loading and unloading, air conditioning units, and parking lot vehicle movements, exceed the 80 dBA L_{max} daytime or 60 dBA L_{max} nighttime noise level standards at the nearby sensitive receiver locations in the City of Perris (City of Perris Municipal Code, Section 7.34.040); or
- Project-related operational noise levels from industrial or commercial facilities located within 160 feet of the property line of the affected residential land use exceed 60 dBA CNEL; or
- Ambient noise levels at the nearby noise-sensitive receivers near the Project site:
 - are less than 60 dBA L_{eq} and the project creates a 5 dBA L_{eq} or greater project-related noise level increase (PVCC SP EIR, Page 4.9-20); or
 - exceed 60 dBA L_{eq} , and the project creates a 3 dBA L_{eq} or greater project-related noise level increase (PVCC SP EIR, Page 4.9-20).

Although the City of Perris does not have any specified thresholds for vibration, the FTA vibration criteria, as referenced in the PVCC SP EIR pages 4.9-27 and 4.9-28, will be utilized to evaluate vibration impacts. If long-term project generated operational source vibration levels exceed the FTA maximum acceptable vibration standard of 80 vibration decibels (VdB) at noise-sensitive receiver locations, noise levels will exceed the vibration CEQA threshold.

CONSTRUCTION NOISE AND VIBRATION

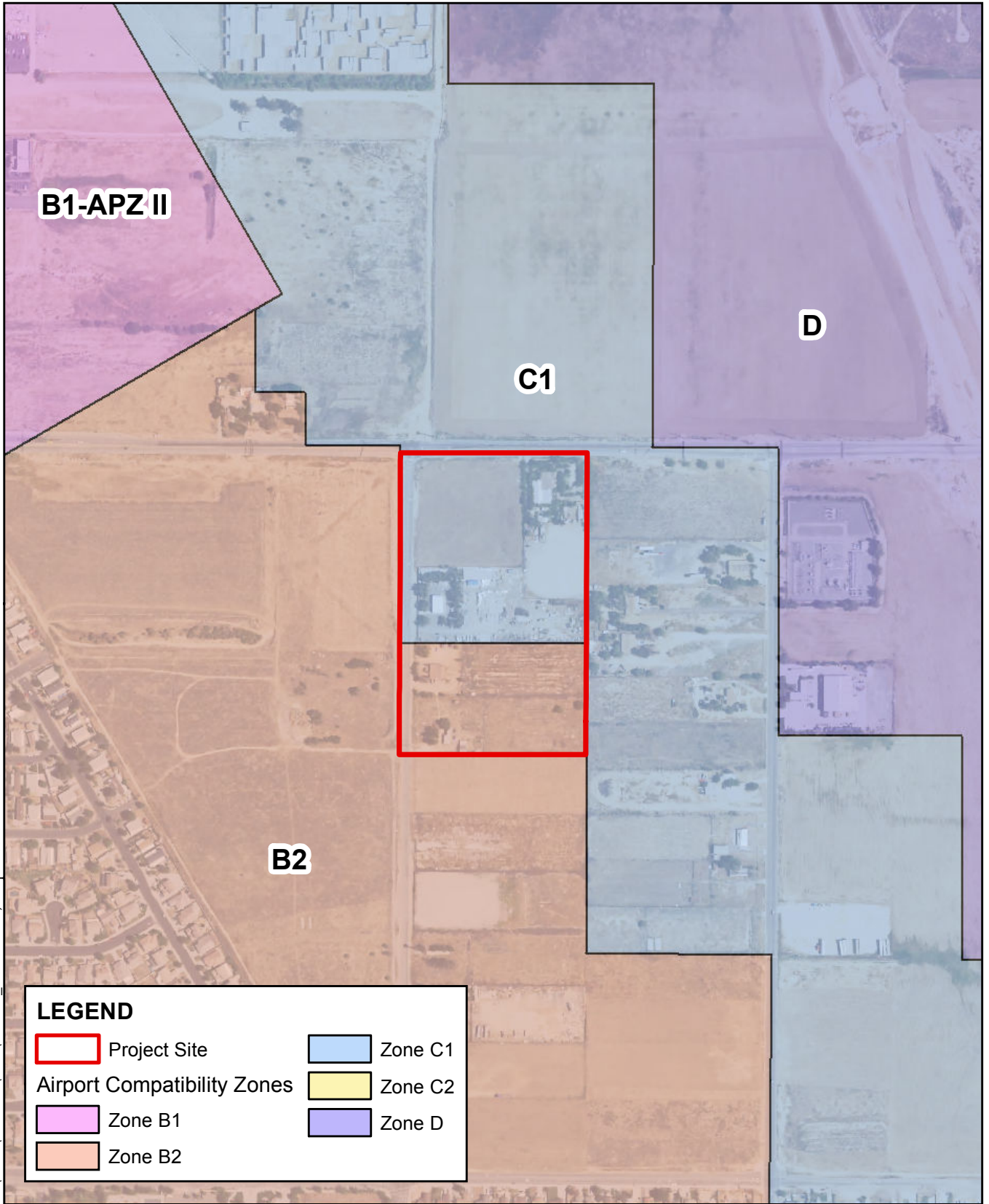
If project-related construction activities create noise levels at sensitive receiver locations in the City of Perris above the construction noise level limit of 80 dBA L_{eq} (City of Perris Municipal Code 7.34.060), noise levels will exceed the noise CEQA threshold.

Although the City of Perris does not have any specified thresholds for vibration, the FTA vibration criteria, as referenced PVCC SP EIR pages 4.9-27 and 4.9-28, will be utilized to evaluate vibration impacts. If short-term project-generated construction source vibration levels exceed the FTA maximum acceptable vibration standard of 80 vibration decibels (VdB) at noise-sensitive receiver locations, noise levels will exceed the vibration CEQA threshold.


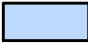
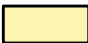



AIRPORT NOISE

The nearest airport, which is approximately 2.5 miles northwest of the project site, is March Air Reserve Base/Inland Port Airport. The Riverside County Airport Land Use Commission adopted the March Air Reserve Base/Inland Port Airport Land Use Compatibility Plan. This Plan provides noise contours for this airport to assist in setting policies for establishing new land uses and appropriate mitigation for properties that will continue to be exposed to higher noise levels. As shown in **Figure 5**, the project is located within the March Air Reserve Base land use Compatibility Zones C1 and B2. For these zones, the noise contour is 60 and 65 CNEL, respectively. The project is consistent with the type of land use for this compatibility zone. Standard building construction for the project is presumed to provide adequate sound attenuation where the difference between the exterior noise exposure and the interior standard is 20 dB or less. Compliance with the land use type for this compatibility zone meets the CEQA threshold for airport noise.

H:\2019\19-0237\GIS\MARB_Zones.mxd; Map created 12 Mar 2020

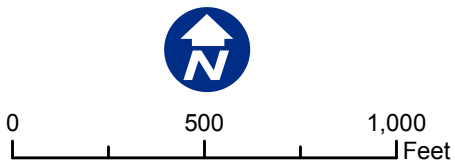


LEGEND

	Project Site		Zone C1
Airport Compatibility Zones			Zone C2
	Zone B1		Zone D
	Zone B2		

Sources: Riverside Co. GIS, 2020; USDA NAIP, 2016.

Figure 5 - MARB Compatibility Zones
First Industrial Rider



5.0 EXISTING NOISE MEASUREMENTS

The existing noise environment was characterized by collecting field noise measurements at sensitive residential properties within the project area. A total of one (1) long-term 24-hour measurement was taken at the project site on December 16 and December 17, 2019. **Table 5-1** presents the CNEL values and hourly day and night noise levels for the project site for the sensitive receivers identified in **Figure 5**. Appendix A includes the field monitoring data for each monitoring location.

5.1 Measurement Procedure and Criteria

Hourly noise levels were measured during typical weekday conditions over 24 hours to describe the existing noise environment, the daytime, nighttime hourly noise levels, and associated 24-hour CNEL. The 24-hour measurements provide the hourly noise levels to calculate the CNEL for the project area. Long-term noise measurements were taken using a Larson Davis Type 1 precision sound level meter. All noise meters were programmed in “slow” mode to record noise levels in the “A” weighted form. The sound level meter and microphone were mounted, five feet above the ground, and equipped with a windscreen during all measurements. The Larson Davis sound level meter was calibrated before the monitoring using a CAL200 calibrator. All noise level measurement equipment meets American National Standards Institute (ANSI) specifications for sound level meters (S1.4-1983 identified in Chapter 19.68.020.AA).

5.2 Noise Measurement Locations

The noise monitoring location was selected based on the proximity to nearby residential property and local roadways. Noise measurement location at Site 1, as shown in **Figure 6**, was monitored for 24 hours. Site 1 is located near 475 E. Rider Street, adjacent to the eastern edge of the project site's property boundary. The background ambient noise levels in the Project study area are dominated by the transportation-related noise associated with the arterial roadway network (i.e., Rider Street). The background ambient noise levels include the auto and heavy truck activities near the noise level measurement location. **Table 5-1** identifies the hourly daytime (7:01 am to 10:00 pm) and nighttime (10:01 pm to 7:00 am) noise levels at each noise level measurement location consistent with the City of Perris Municipal Code. Appendix A provides a summary of the existing hourly ambient noise levels as described below:

Site 1 represents the noise levels adjacent to the eastern portion of the Project site boundary near Rider Street. The noise level measurements collected show an overall 24-hour exterior noise level of 64 dBA CNEL. The energy (logarithmic) average daytime noise level was calculated at 60 dBA L_{eq} with an average nighttime noise level of 58.1 dBA L_{eq} .

Table 5-1. Existing (Ambient) Long-Term (24-hour) Noise Level Measurements¹

Noise Monitoring Location ID ^{2,3}	Description	Hourly Noise Levels (1hr- L_{eq})						24-hour Noise Levels (CNEL)
		Daytime Minimum	Daytime Maximum	Average Daytime	Nighttime Minimum	Nighttime Maximum	Average Nighttime	
Site 1	475 E. Rider Street (east of the project site)	57.9	62.3	60	50.9	61.3	58.1	64

¹ Noise measurement was taken on December 16, 2019, and December 17, 2019. See Appendix A for monitoring data.

² See Figure 5 for the location of the monitoring sites.

³ Taken with Larson Davis Type 1 noise meter

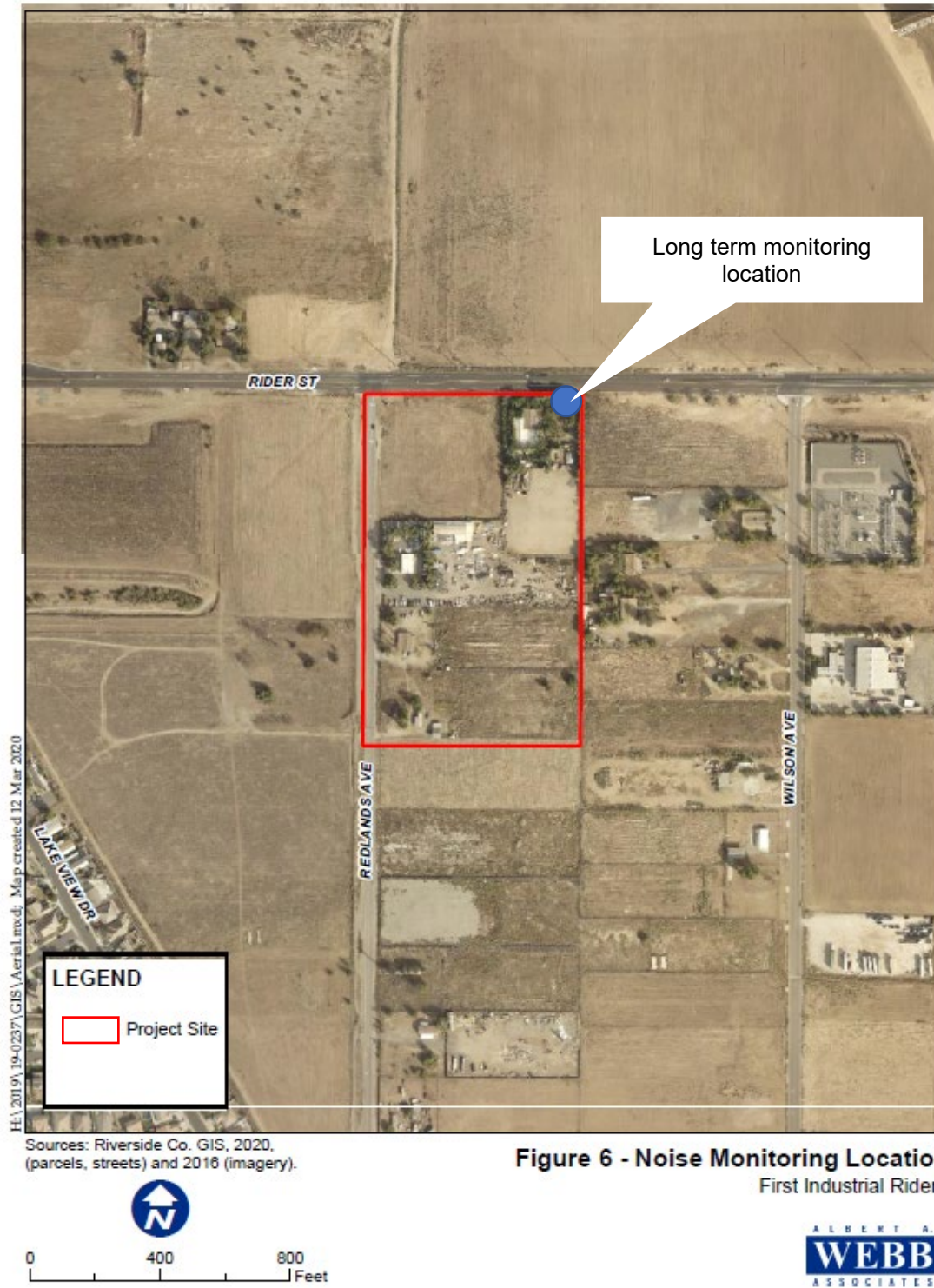


Figure 6 - Noise Monitoring Location
First Industrial Rider

6.0 ANALYSIS METHODS AND PROCEDURES

The following section outlines the analysis methods utilized to predict future noise and vibration levels from the construction and operation of the project.

6.1 Construction

6.1.1 Noise Analysis Methods

The assessment of the construction noise impacts must be relatively general at this phase of the project because many of the decisions affecting noise will be at the discretion of the contractor. However, an assessment based on the type of equipment expected to be used by the contractor can provide a reasonable estimate of potential noise impacts and the need for noise mitigation. A worst-case construction noise scenario was developed to estimate the loudest activities occurring at the project site. Pile driving and blasting activities are not anticipated; therefore, the loudest construction activities are centered around the movement of heavy construction equipment during site preparation, grading operations, and the erection of buildings. Noise levels were estimated based on a worst-case scenario, which assumed all pieces of equipment would be operating simultaneously during each construction phase. The calculated noise level was then compared to the respective local noise regulation to determine if construction would exceed the City of Perris's exterior noise standard of 80 dBA at nearby residential land uses. Construction of the project is expected to occur over nine months. Receiver distance to the construction activity along with the construction equipment operating at the maximum load will have the greatest influence on construction noise levels experienced at residential land uses.

6.1.2 Vibration Analysis Methods

Ground-borne vibration levels resulting from construction activities within the project area were estimated using the FTA data in its Transit Noise and Vibration Impact Assessment Manual (FTA, 2018). Predicted construction vibration levels were identified at the nearest off-site residential land use and compared to the FTA damage criteria and the human annoyance criteria, as shown previously in **Table 3-1** and **Table 3-2**, respectively.

6.2 Operational Noise & Vibration Analysis

6.2.1 Operational Traffic Noise Analysis Methods

The project roadway noise impacts from vehicular traffic were predicted using the FHWA-TNM 2.5 Model. The FHWA TNM 2.5 Model arrives at a predicted noise level through several adjustments to the Reference Energy Mean Emission Level (REMEL). Adjustments are then made to the REMEL to account for: roadway classifications (e.g., collector, secondary, major, or arterial), active roadway width (i.e., the distance between the center of the outermost travel lanes on each side of the roadway), traffic volumes, travel speed, percentages of automobiles, medium trucks, and heavy trucks, roadway grade, angle of view (e.g., whether the roadway view is blocked), the site conditions ("hard" or "soft" relates to the adsorption of the ground, pavement, or landscaping).

6.2.2 Operational Traffic Noise Analysis Inputs

Roadway parameters, peak hour traffic volumes, and traffic flow distributions (vehicle mix) used in this analysis were obtained from traffic data provided by Webb Associates (2020), as shown in Appendix B (TNM

Traffic Inputs). The vehicle mix provides the distribution percentages of the automobile, medium trucks, and heavy trucks for input into the FHWA Model.

Soft site conditions were used to develop the noise contours to analyze the study area's traffic noise impacts. Soft site conditions account for the sound propagation loss over natural surfaces such as normal earth and ground vegetation.

6.2.3 Operational Traffic Vibration Analysis

As a conservative measure, the vibration vs. distance curve obtained from the Caltrans Transportation and Construction Vibration Guidance Manual will be used to represent worst-case vibration levels from truck traffic at the nearest receiver locations along Rider Street and Redlands Avenue. This curve provides empirical data collected from several freeways and local roadways to determine auto and truck traffic vibration levels. This curve will make a qualitative assessment of anticipated vibration levels at residential land uses along local roadways near the project site. These vibration levels will be compared to the Caltrans and FTA vibration criteria, as shown previously in **Table 3-1 and Table 3-2**. These criteria will be utilized to evaluate the vibration effects of continuous auto and truck traffic.

6.2.4 Stationary Noise Analysis Method

The primary non-transportation noise sources associated with the project are HVAC equipment, on-site parking lot circulation, and the 43-bay loading dock. In order to evaluate these noise sources at the nearest residential noise-sensitive receptors, existing short-term measurements were taken to obtain a reference noise level of similar operational activities. These reference noise levels were used to describe the anticipated operational noise levels generated from idling trucks, delivery truck activities, backup alarms, loading and unloading, air conditioning units, and parking lot vehicle movements. **Table 6.1** provides the reference noise level measurements that were collected from similar existing operational noise sources. The reference noise levels were obtained at a Costco Distribution Center located at 26610 Ynez Rd, Temecula, CA 92591. Measurements were taken at this location of similar stationary source activity of a typical warehouse.

Table 6.1 Reference Noise Levels							
Noise source ¹	Duration of measurement	Reference Distance from the source (ft)	Noise source height (ft)	L _{eq} @Reference distance	L _{max} @Reference distance	L _{eq} @ 50 feet	L _{max} @ 50 feet
unloading/loading ²	15min	10	8	69.6 dBA	76.1 dBA	55.6 dBA	62.1 dBA
Parking lot circulation ³	30min	12	5	71.3 dBA	81.2 dBA	58.9 dBA	68.8 dBA
Air conditioning units ⁴	30min	5	25	68.6 dBA	87.5dBA	48.6dBA	67.5dBA

¹ Noise measurements were taken at the Temecula Costco Distribution Center on 12/13/2019.
² Activities included in this measurement-Backup alarms, unloading a docked truck container.
³ Activities included in this measurement-cars pulling in and out of spaces, exiting, and entering the parking lot.
⁴ Activities included in this measurement- mechanical roof-top air conditioning unit on the roof.

7.0 OFF-SITE TRANSPORTATION NOISE IMPACTS

Roadway Noise

The primary off-site noise-related effects are attributable to increases in traffic. The Traffic Noise Model (TNM 2.5) was utilized to assess noise impacts at sensitive residential receiver locations. The project, along with future regional growth and other projects to be developed within the Project vicinity, would result in vehicle trips that would increase traffic noise. Further, the Riverside County Transportation Commission (RCTC) will be constructing the new Placentia Avenue interchange in cooperation with the Federal Highway Administration (FHWA) and Caltrans District 8. The new interchange is anticipated to improve traffic flow by adding new on and off-ramps, widening the existing Placentia Avenue overcrossing, and adding lanes Placentia Avenue between Harvill Avenue and Indian Avenue. These improvements will affect circulation routes near the project site. Construction of this interchange will begin construction in the fall of 2020 and open to drivers in the fall of 2022. The traffic assumptions utilized for assessing off-site transportation noise impacts were consistent with the Traffic Impact Assessment (Webb, 2020), which accounted for the effects of traffic with and without the interchange improvements.

The roadway noise analysis focused on segments that experienced the greatest increase in truck traffic near sensitive residential receiver locations. The affected traffic receiver locations (R_T-1 through R_T-8) within the project area are shown in **Figure 7**.

A potential noise impact when the resulting noise levels at noise-sensitive land uses (e.g., residential, etc.):

- are less than 60 dBA CNEL and the project creates a 5 dBA CNEL or greater project-related noise level increase (PVCC SP EIR, Page 4.9-20); or
- exceed 60 dBA CNEL, and the project creates a 3 dBA CNEL or greater project-related noise level increase (PVCC SP EIR, Page 4.9-20).

The TNM modeling was performed for the following scenarios: existing; existing plus project with and without the Placentia Interchange, existing plus ambient growth plus cumulative projects, existing plus ambient growth plus cumulative projects plus project; existing plus ambient plus cumulative projects with Placentia Interchange and existing plus ambient plus cumulative projects plus projects with Placentia Interchange (Webb Associates, 2020). The TNM model takes into account the posted vehicle speed, peak hour traffic volumes, the estimated vehicle mixes, and the sound-attenuating effects of intervening structures, barriers, vegetation, or topography. The model assumed “pavement” site propagation conditions. **Table 7-1** presents the Existing and Future Roadway Traffic Noise Levels (dBA L_{eq} CNEL).

As shown in **Table 7-1**, Project noise levels do not have noticeable increases above existing noise levels. A majority of the noise levels are above 60 dBA CNEL, except at receivers R_T-6, R_T-7, and R_T-8. These three receivers are the only receivers that have current noise levels below 60 dBA CNEL. However, the project does not have a noticeable increase above 1 dBA at any receiver location. Therefore, these increases will not exceed the CEQA threshold.

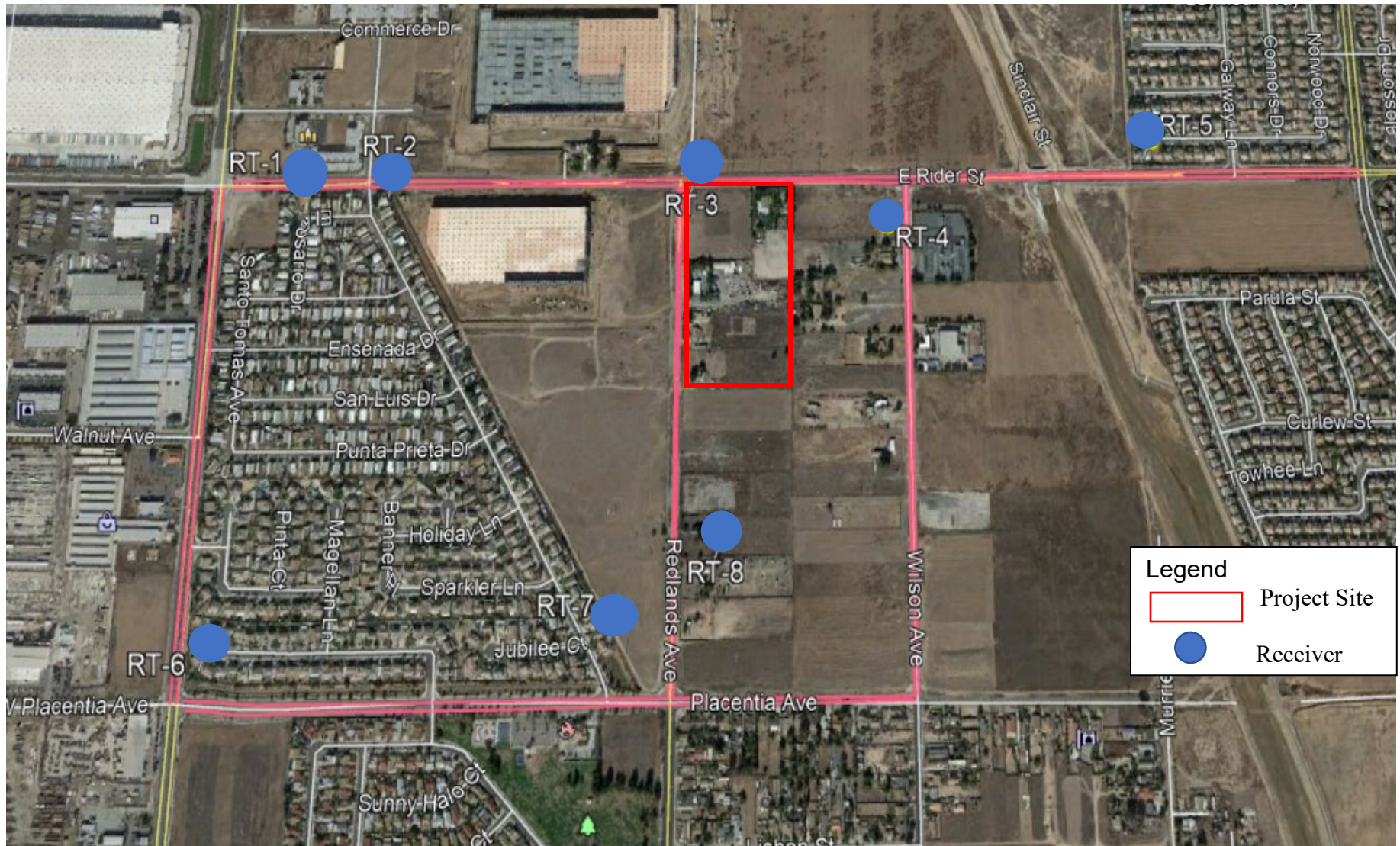


Figure 7. Traffic Residential Receiver Locations



Table 7-1. Traffic Noise Levels Near Sensitive Receiver Locations (dBA, CNEL)¹

Receiver	Existing	Existing Plus Project Year of Opening	Change in Noise Level	Existing Plus Project Year of Opening with Placentia Interchange	Change in Noise Level	Existing Plus Ambient Growth Plus Cumulative Projects	Existing Plus Ambient Growth Projects Plus Cumulative Projects Plus Project	Change in Noise Level	Existing Plus Ambient Growth Projects Plus Cumulative Projects with Placentia Interchange	Existing Plus Ambient Growth Projects Plus Cumulative Projects with Placentia Interchange	Change in Noise Level
R _{T-1}	63.1	63.7	0.6	63.9	0.8	64.5	65	0.5	64.7	65.3	0.6
R _{T-2}	61.4	61.5	0.1	62.3	0.9	63.0	63.1	0.1	64.1	64.7	0.6
R _{T-3}	60.4	60.5	0.1	61.3	0.9	62.1	62.1	0.0	63.2	63.8	0.6
R _{T-4}	61.3	61.4	0.1	61.4	0.1	62.8	62.8	0.0	62.8	62.8	0.0
R _{T-5}	61.3	61.4	0.1	61.4	0.1	62.8	62.8	0.0	62.8	62.8	0.0
R _{T-6}	31.5	31.7	0.2	32.3	0.8	33.1	33.3	0.2	34.0	34.5	0.5
R _{T-7}	41.7	41.9	0.2	41.9	0.2	42.7	42.9	0.2	42.9	43.1	0.2
R _{T-8}	46.0	46.3	0.3	46.2	0.2	47.0	47.1	0.1	47.2	47.3	0.1

¹ Traffic noise levels are based on peak hour traffic volumes as a worst-case scenario. The 1-hour TNM L_{eq} dBA results for each receiver location were then converted to dBA CNEL for each receiver location.

8.0 STATIONARY-RELATED NOISE IMPACTS

The project was evaluated for stationary noise impacts. The City of Perris Municipal Code, Section 7.34.040, requires operational noise levels not to exceed the 80 dBA L_{max} daytime or 60 dBA L_{max} nighttime noise level standards at the nearby sensitive receiver locations in the City of Perris. Although the surrounding land uses are not residential zones, several non-conforming residential homes are located around the project site, therefore these standards will be utilized for the evaluation of noise impacts. Stationary-related noise impacts were evaluated utilizing the maximum noise levels assumptions outlined in section 6.2.4 for the HVAC equipment, on-site parking lot circulation, and the proposed 43-bay loading dock (including backup beeps and air brake releases).

Table 8-1 provides a listing of the sensitive residential receiver locations near the project site. Distances from the sensitive receiver location to the project site were from receivers R_{op-1} through R_{op-10} .

The reference noise levels for various operational noise sources provided in **Table 6.1** were utilized to calculate the predicted operational source noise levels at residential receiving properties, R_{OP-1} through R_{OP-10} . The noise propagation attenuation formula was used to account for distance attenuation due to geometric spreading when sound from a localized stationary source propagates. Sound attenuates at a rate of 6 dB for each doubling of distance from a point source. This attenuation factor was applied to each reference noise level to obtain the predicted operational noise level. The predicted operational noise levels for each operational source type were combined to obtain the total project-only operational noise level at each nearby sensitive residential receiver location. The combined project operational noise levels at receivers R_{OP-1} through R_{op-10} range from 43.7 to 59.9 dBA L_{max} as shown in Table 8-1. Table 8-2 shows the combined operational CNEL values range from 37 to 56. Therefore, operational noise levels associated with the project will satisfy the City of Perris Municipal Code exterior noise level standards of 80 dBA L_{max} daytime and 60 dBA L_{max} nighttime and the General Plan Standard of 60 CNEL.

Table 8-1. Project Only Operational Noise levels (dBA L_{max})

Receiver Location ¹	Distance	Noise Sources (dBA L_{max}) ²			Combined Project Only Operational Noise Level (dBA L_{max}) ³
		Unloading /loading	Parking lot Circulation	Air Conditioning units	
R_{op-1}	835	37.7	44.4	43.0	47.1
R_{op-2}	645	40.0	46.6	45.3	49.5
R_{op-3}	185	40.5	57.4	56.1	59.9
R_{op-4}	185	40.5	57.4	56.1	59.9
R_{op-5}	604	50.8	47.2	45.9	53.3
R_{op-6}	785	38.2	44.9	43.6	47.8
R_{op-7}	726	38.9	45.6	44.3	48.5
R_{op-8}	854	37.5	44.2	43.9	47.5
R_{op-9}	1,068	35.5	42.2	40.9	45.1
R_{op-10}	1,262	34.1	40.8	39.5	43.7

¹ Figure 8 shows the construction receiver locations.

² Calculated by taking the reference noise levels provided in Table 6-1 and applying the 6dBA doubling of distance propagation attenuation noise formula.

³ Calculated logarithmically by adding the reference noise levels for each operating source type together to obtain a total noise level.

Table 8-2. Project Only Operational Noise levels (dBA L_{eq}) & CNEL

Receiver Location ¹	Distance	Noise Sources (dBA L _{eq}) ²			Combined Project Only Operational Noise Level (dBA L _{eq}) ³	CNEL
		Unloading /loading	Parking lot Circulation	Air Conditioning units		
R _{op} -1	835	31.1	34.4	24.1	36.3	43
R _{op} -2	645	33.3	36.7	26.4	38.6	45
R _{op} -3	185	44.2	47.5	37.2	49.4	56
R _{op} -4	185	44.2	47.5	37.2	49.4	56
R _{op} -5	604	34.0	37.7	27.0	39.5	46
R _{op} -6	785	31.7	35.0	24.7	37.0	44
R _{op} -7	726	32.4	35.7	25.4	37.6	44
R _{op} -8	854	31.0	34.3	24.0	36.2	43
R _{op} -9	1,068	22.0	29.0	22.0	30.5	37
R _{op} -10	1,262	27.6	30.9	20.6	32.8	39

¹ Figure 8 shows the construction receiver locations.

² Calculated by taking the reference noise levels provided in Table 6-1 and applying the 6dBA doubling of distance propagation attenuation noise formula.

³ Calculated logarithmically by adding the reference noise levels for each operating source type together to obtain a total noise level.

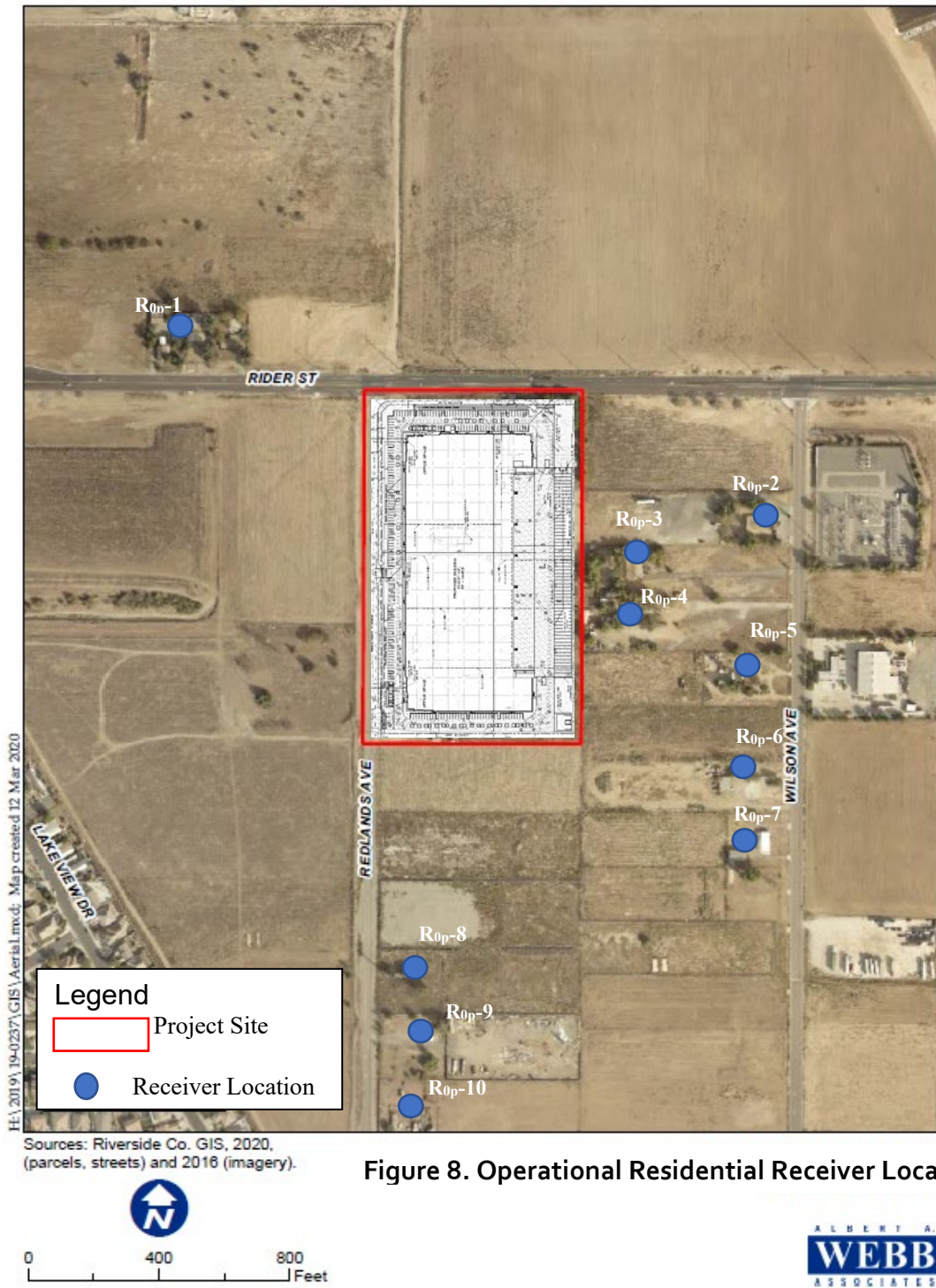


Figure 8. Operational Residential Receiver Locations

As shown in **Tables 8-3 and 8-4**, the combined project only operational noise levels provided in **Table 8.2** were added to the average measured ambient noise level to determine the total combined operational noise level and the increase over existing ambient noise levels.

The project will contribute a daytime operational noise level increase of up to 0.4 dBA L_{eq} and a nighttime operational noise level increase of up to 0.6 dBA L_{eq} at the sensitive residential receiver locations. The project-related operational noise level contributions would not exceed the CEQA threshold of 5-dBA L_{eq} when the without project noise levels are below 60 dBA or a 3-dBA increase when the project noise levels are above 60 dBA as discussed in Section 4. Therefore, the increases at the sensitive residential receiver locations will not exceed the CEQA threshold.

Receiver Location ¹	Combined Operational Noise Level (dBA L_{eq}) ²	Average Measured Ambient Noise Level (dBA L_{eq}) ³	Combined Noise level (dBA L_{eq}) ⁴	Project Increase
R _{op} -1	36.3	60.0	60.0	0.0
R _{op} -2	38.6	60.0	60.0	0.0
R _{op} -3	49.4	60.0	60.4	0.4
R _{op} -4	49.4	60.0	60.4	0.4
R _{op} -5	39.5	60.0	60.0	0.0
R _{op} -6	37.0	60.0	60.0	0.0
R _{op} -7	37.6	60.0	60.0	0.0
R _{op} -8	36.2	60.0	60.0	0.0
R _{op} -9	30.5	60.0	60.0	0.0
R _{op} -10	32.8	60.0	60.0	0.0

¹ Figure 6 shows the receiver locations.

² Combined Noise Level from Table 8-2.

³ Site 1 average measured daytime noise level was used for receiver closest to Rider St.

⁴ Calculated logarithmically by adding the average measured daytime ambient noise level listed in Table 5.1 for the nearest respective monitoring site to the combine operational noise level.

Table 8-4. Operational Nighttime Operational Noise levels (dBA L_{eq})

Receiver Location ¹	Combined Operational Noise Level (dBA L _{eq}) ²	Measured Ambient Noise Level (dBA L _{eq}) ³	Combined Noise level (dBA L _{eq}) ⁴	Project Increase
R _{op-1}	36.3	58.1	58.1	0.0
R _{op-2}	38.6	58.1	58.2	0.1
R _{op-3}	49.4	58.1	58.7	0.6
R _{op-4}	49.4	58.1	58.7	0.6
R _{op-5}	39.5	58.1	58.2	0.0
R _{op-6}	37.0	58.1	58.1	0.0
R _{op-7}	37.6	58.1	58.1	0.0
R _{op-8}	36.2	58.1	58.1	0.0
R _{op-9}	30.5	58.1	58.1	0.0
R _{op-10}	32.8	58.1	58.1	0.0
R _{op-1}	36.3	58.1	58.1	0.0

¹ Figure 8 shows the receiver locations.

² Combined Noise Level from Table 8-2.

³ Site 1 average measured nighttime noise level was used for receiver closest to Rider St.

⁴ Calculated logarithmically by adding the average measured nighttime ambient noise level listed in Table 5.1 for the nearest respective monitoring site to the combine operational noise level.

9.0 OPERATIONAL VIBRATION ANALYSIS

The operation of the project will increase auto and truck traffic within the project area. Per the Caltrans Transportation Noise and Vibration Manual, traffic, auto, and heavy trucks traveling on roadways rarely generate vibration amplitudes high enough to cause structural or cosmetic damage. However, a qualitative analysis was provided in this study to evaluate the likelihood of vibration impacts from the project utilizing the empirical vibration curve developed by Caltrans.

The Caltrans Noise and Vibration Manual provides a collection of measured vibration data for truck pass-bys. This data demonstrates that truck pass-bys can be characterized by a peak in vibration that is considerably higher than those generated by automobiles for a few seconds. Vibration from these trucks drops off dramatically with distance. As truck volumes increases, more peaks will occur but not necessarily higher peaks. Vibration wavefronts emanating from several trucks closely together may either cancel or partially cancel (destructive interference) or reinforce or partially reinforce (constructive interference) each other, depending on their phases and frequencies. Since traffic vibrations can be considered random, the probabilities of total destructive or constructive interference are minimal. Coupled with the fact that two trucks cannot occupy the same space and the rapid drop-off rates, it is understandable that two or more trucks normally do not contribute significantly to each other's peaks.

In order to predict the maximum truck traffic vibrations from the project, the Caltrans empirical curve, as shown in **Figure 8**, was obtained from the Caltrans Noise and Vibration Manual (Caltrans, 2013). This curve was used to predict operational vibration impacts. **Figure 8** shows a graph of measured vibration data collected from truck traffic traveling on freeways and local roadways plotted by truck traffic vibrations vs. distance from the nearest travel lane's centerline. The graph indicates that the highest traffic generated vibrations measured on freeway shoulders (5 m from the centerline of the nearest lane) have never exceeded 2.0 mm/s or (0.08 in/sec) with the worst combinations of heavy trucks. This amplitude coincides with the maximum recommended "safe amplitude" for historical buildings. The graph illustrates the rapid attenuation of vibration amplitudes, which dips below the threshold of perception for most people at about 45 m (150 ft). Caltrans states that sensitive receivers adjacent to local roadways, within 15 m(50 feet) of the nearest travel lane's centerline, similar to receivers R_{T-1} through R_{T-8}, will have maximum worse-case vibration levels near 0.08 mm/s or (0.0032 in/sec or 70 VdB).

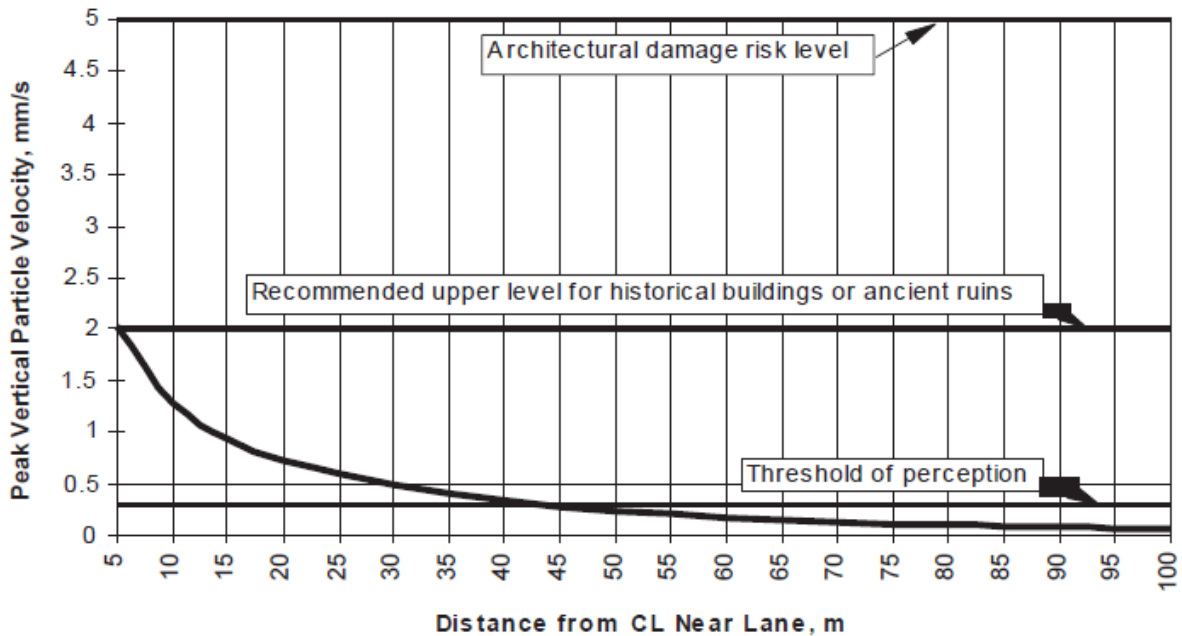


Figure 9. Maximum Truck Traffic Vibration Levels vs. Distance

Caltrans and FTA provide a range of perceptible annoyance levels, and this predicted vibration level falls well below the distinctly perceptible level of 0.08 PPV (in/sec), below the FTA damage criteria of 0.3 PPV (in/sec) and the human annoyance level of 80 VdB. Further, this worst-case vibration level from truck traffic would not exceed the Caltrans threshold of 0.2 PPV (in/sec). It is expected that actual vibration levels within the project area from truck traffic will be lower than this worst-case level when soil type and pavement conditions are considered. On this basis, the potential for the Project to result in the exposure of persons to, or generation of, excessive ground-borne vibration is determined to be below the 80 VdB FTA vibration threshold.

10.0 SHORT-TERM CONSTRUCTION NOISE & VIBRATION IMPACTS

Construction noise represents a temporary impact on ambient noise levels. Construction noise is primarily caused by diesel engines (trucks, dozers, backhoes), impacts (jackhammers, pile drivers, hoe rams), and backup alarms. Construction equipment can be stationary or mobile. Stationary equipment operates in one location for hours or days in a constant mode (generators, compressors) or generates variable noise operations (pile drivers, jackhammers), producing constant noise for a period of time. Mobile equipment moves around the site and is characterized by variations in power and location, resulting in significant variations in noise levels over time. Grading activities and rock blasting typically generate the greatest noise impacts during construction. This section assesses the potential noise impacts to the existing sensitive residential land uses during construction.

10.1 Noise Sensitive Uses and Construction Noise Standards

Pursuant to the City of Perris Municipal Code Section 7.34.060 (Construction Noise), the following construction activities such as demolition, excavation, alteration, or repair of any building or structure are prohibited from creating disturbing, excessive, or offensive noise between the hours of 7:00 pm and 7:00 am, on Sundays, and on a legal holiday. Construction activities within the City of Perris shall not exceed 80 dBA in residential zones within the city. Although the surrounding land uses are not residential zones, several non-conforming residential homes are located around the project site, therefore these standards will be utilized to evaluate construction noise impacts.

10.2 Construction Schedule

The construction schedule for the project is described below.

As shown in **Table 10-1**, the estimated construction period for the project is approximately nine months. Construction is anticipated to begin with grading in September 2021 and end with architectural coatings (painting) in September 2022, as shown in **Table 10-1**.

Table 10-1. Construction Schedule

Construction Activity	Start Date	End Date	Total Working Days
Demolition	09/01/2021	09/28/2021	20
Site Preparation	09/29/2021	10/26/2021	20
Grading	10/27/2021	12/07/2021	30
Building Construction	12/08/2021	09/08/2022	197

Table 10-2 presents the equipment for each construction activity based on engineering estimates and the Applicant.

Table 10-2. Equipment by Construction Activity

Construction Activity	Off-Road Equipment	Unit Amount
Demolition	Concrete/Industrial Saws	1
	Forklifts	3
	Generator Sets	1
	Tractors/Loaders/Backhoes	3
	Welders	1
Site Preparation	Rubber Tired Dozers	3
	Tractors/Loaders/Backhoes	4
Grading	Excavators	2
	Graders	1
	Rubber Tired Dozers	1
	Scrapers	2
	Tractors/Loaders/Backhoes	2
Building Construction	Cranes	1
	Forklifts	3
	Generator Sets	1
	Tractors/Loaders/Backhoes	3
	Welders	1
Paving	Pavers	1
	Paving Equipment	1
	Rollers	1
Architectural Coating	Air Compressors	1

¹Percentage of the time in use during an 8-hour day

10.3 Construction Noise Levels

The RCNM model was used to determine which phase of construction activity for the project would generate the greatest construction noise level. It was assumed that each construction activity would occur within a distance of 185 feet of the nearest residential receivers, R_{op-3} and R_{op-4}. The receiver distance was measured from the loading dock to the adjacent property line of the affected residential land uses to the east of the project site. Table 10-3 presents the noise levels in L_{max} for each construction phase. As shown in Table 10-3, the highest noise level that would be experienced at R_{op-3} and R_{op-4} is 78.2 dBA L_{max}. This noise level occurs during the demolition and grading phases of the project. This noise level is less than the City of Perris's noise standard of 80 dBA L_{max} within residential zones.

Construction Phases	Construction Hourly dBA, L _{max} ¹
Demolition	78.2
Site Preparation	70.3
Grading	73.6
Building	69.2
Paving	78.1
Painting	66.3

¹Worst-case construction noise levels evaluated at the property line of receivers Rop-3 & Rop-4, the closest receivers to the project site.

10.4 Construction Vibration

Ground-borne vibration levels resulting from construction activities occurring within the project site were estimated using the FTA data. Construction activities that would occur within the project site include grading, building construction, paving, and painting. These activities have the potential to generate low levels of ground-borne vibration.

Using the vibration source level of construction equipment provided in Table 7-4 and the FTA's construction vibration assessment methodology, it is possible to estimate the project vibration impacts. **Table 10-4** presents the expected project-related vibration levels at 185 feet at the nearest residential land use. The receiver distance was measured from the loading dock to the adjacent property line of the affected residential land uses to the east of the project site.

Noise Receiver	Distance to Property Line ¹	Large Bulldozer Reference Vibration Level PPV _{ref} (VdB) at 25ft	Peak Vibration PPV (VdB) at 185 ft	Exceed Threshold? (Below 80 VdB)
Rop-3 & Rop-4	185 feet	87VdB	59VdB	No

¹ Reference noise level obtained from the FTA Noise and Vibration Manual, Table 7-4. (FTA, 2018)

Based on the FTA's reference vibration levels, a large bulldozer represents the peak source of vibration with a reference level of 87 VdB at a distance of 25 feet. At 185 feet, construction vibration levels are expected to approach 59VdB. Using the construction vibration assessment annoyance criteria provided by the FTA for infrequent events, as shown in **Table 3-2**, the construction of the project site will not result in a perceptible human response (annoyance). Impacts at the site of the closest sensitive receptor are unlikely to be sustained during the entire construction period. Moreover, construction at the project site will be restricted to daytime hours, thereby eliminating potential vibration impacts during sensitive nighttime hours. Further, the predicted construction noise level is below the PVCC SP vibration threshold of 80 VdB.

10.5 Construction Mitigation Measures

As discussed previously, the project site is located within the PVCCSP planning area of the City of Perris. Although the project's construction noise and vibration impacts will be below City standards and CEQA thresholds, the project is subject to all applicable mitigation measures from the PVCCSP EIR. The PVCCSP EIR mitigation measures that are applicable to the project are as follows:

- **PVCCSP EIR MM Noise 1:** During all demolition project site excavation and grading on-site, the construction contractors shall equip all construction equipment, fixed or mobile, with properly operating and maintained mufflers, consistent with the manufacturers' standards. The construction contractors shall place all stationary construction equipment, so that emitted noise is directed away from the noise-sensitive receptors nearest the project site.
- **PVCCSP EIR MM Noise 2:** During construction, stationary construction equipment, stockpiling and vehicle staging areas will be placed a minimum of 446 feet away from the closest sensitive receptor.
- **PVCCSP EIR MM Noise 3:** No combustion-powered equipment, such as pumps or generators, shall be allowed to operate within 446 feet of any occupied residence unless the equipment is surrounded by a noise protection barrier.
- **PVCCSP EIR MM Noise 4:** Construction contractors of implementing development projects shall limit haul truck deliveries to the same hours specified for construction equipment. To the extent feasible, haul routes shall not pass sensitive land uses or residential dwellings.

11.0 REFERENCES

California Department of Transportation's (Caltrans). 2013. *Transportation- and Construction-Vibration Guidance Manual*.

California Department of Transportation (Caltrans). 2013. Technical Noise Supplement (TeNS), A Technical Supplement to the Traffic Noise Analysis Protocol.

http://www.dot.ca.gov/hq/env/noise/pub/TeNS_Sept_2013B.pdf

Federal Highway Administration (FHWA) Construction Noise Handbook Section 9.o. Accessed at:

https://www.fhwa.dot.gov/environment/noise/construction_noise/handbook/handbook09.cfm

Federal Highway Administration (FHWA) Construction Noise Handbook Section 8.o. Accessed at:

https://www.fhwa.dot.gov/environment/noise/construction_noise/handbook/handbook08.cfm

Federal Highway Administration (FHWA), Roadway Construction Noise Model (RCNM) (2008).

Federal Transit Administration (FTA). 2018. Transit Noise and Vibration Impact Assessment.

<https://www.transit.dot.gov/regulations-and-guidance/environmental-programs/fta-noise-and-vibration-impact-assessment>

March Air Reserve Base/Inland Port Airport Land Use Compatibility Plan Mead Hunt, November 13, 2014

Perris Valley Commerce Center Specific Plan Draft Environmental Impact Report (PVCC SP EIR), July 2011.

<http://www.cityofperris.org/city-hall/specific-plans/PVCC/PVCC-DEIR%2007-20-11.pdf>

Webb Associates (2020) Traffic Impact Analysis Report for First Industrial Warehouse at Rider and Redlands Avenue in the City of Perris, CA.

Appendix A Noise Monitoring Data

Site 1 - CNEL Values, November 22, 2019					
Background Leq and Hour Averaging DNL					
Hour	Background Leq	Penalty	Leq DNL (Leq + 10 or 5)		Leq DNL (10^(D/10))
0	52.1	10	54.4	DNL	275422.8703
1	50.9	10	53.9	DNL	245470.8916
2	52	10	52.1	DNL	162181.0097
3	55.3	10	51.1	DNL	128824.9552
4	58.2	10	54.9	DNL	309029.5433
5	59.9	10	56.9	DNL	489778.8194
6	59.5	10	60.2	DNL	1047128.548
7	60.9		59.7		933254.3008
8	60.8		63.5		2238721.139
9	61.3		71.2		13182567.39
10	60.5		69.6		9120108.394
11	59.5		67.4		5495408.739
12	60.5		67.4		5495408.739
13	62.3		62.5		1778279.41
14	57.9		60.3		1071519.305
15	58.6		57.2		524807.4602
16	58.9		57.9		616595.0019
17	60.5		57.1		512861.384
18	58.3		61.4		1380384.265
19	56.7	5	64.6	CNEL	2884031.503
20	58	5	61.3	CNEL	1348962.883
21	56.6	5	68.3	CNEL	6760829.754
22	59.6	10	58.7	DNL	741310.2413
23	62	10	54.2	DNL	263026.7992
(Hour 23 is 23:00 to 23:59)				Average=	2375246.389
	10LOG10 of (Average=)				64

Appendix B-TNM Files

Traffic Input Data for TNM Modeling

Existing	Assumes ADT divided by 24 hours divided by 2 directions multiplied by 2 for peak					
	ADT	Total Volume	Vehicle type	Volume	Speed	
EB Rider – Perris to Redlands	8140	339	Cars	339	40	
	170	7	M. Trucks	7	40	
	30	3	H. Trucks	3	40	
	30		Buses			
EB Rider – Redlands to E Project Driveway	10300	429	Cars	429	40	
	220	9	M. Trucks	9	40	
	40	3	H. Trucks	3	40	
	40		Buses			
EB Rider – E Project Driveway to E	10300	429	Cars	429	40	
	220	9	M. Trucks	9	40	
	40	3	H. Trucks	3	40	
	40		Buses			
WB Rider – E to E Project Driveway	10300	429	Cars	429	40	
	220	9	M. Trucks	9	40	
	40	3	H. Trucks	3	40	
	40		Buses			
WB Rider – E Project Driveway to Perris	10300	429	Cars	429	40	
	220	9	M. Trucks	9	40	
	40	3	H. Trucks	3	40	
	40		Buses			
WB Rider – Perris to Redlands	8140	339	Cars	339	40	
	170	7	M. Trucks	7	40	
	30	3	H. Trucks	3	40	
	30		Buses			
SB Redlands – Rider to N Driveway	2550	106	Cars	106	40	
	60	3	M. Trucks	3	40	
	10	1	H. Trucks	1	40	
	10		Buses			
SB Redlands – N Driveway to S Driveway	2550	106	Cars	106	40	
	60	3	M. Trucks	3	40	
	10	1	H. Trucks	1	40	
	10		Buses			
SB Redlands – S Driveway to South	2550	106	Cars	106	40	
	60	3	M. Trucks	3	40	
	10	1	H. Trucks	1	40	
	10		Buses			
NB Redlands – S to S Driveway	2550	106	Cars	106	40	
	60	3	M. Trucks	3	40	
	10	1	H. Trucks	1	40	
	10		Buses			
NB Redlands – S Driveway to N Driveway	2550	106	Cars	106	40	
	60	3	M. Trucks	3	40	
	10	1	H. Trucks	1	40	
	10		Buses			
NB Redlands – N Driveway to N	2550	106	Cars	106	40	
	60	3	M. Trucks	3	40	
	10	1	H. Trucks	1	40	
	10		Buses			

Existing Plus Project- Assumes ADT divided by 24 hours divided by 2 directions multiplied by 2 for peak						
	ADT	Total Volume	Vehicle Type	Volume	Speed	
EB Rider – Perris to Redlands	8293	346	Cars	346	40	
	170	7	M. Trucks	7	40	
	30	3	H. Trucks	3	40	
	30		Buses			
EB Rider – Redlands to E Project Driveway	10300	429	Cars	429	40	
	220	9	M. Trucks	9	40	
	40	3	H. Trucks	3	40	
	40		Buses			
EB Rider – E Project Driveway to E	10415	434	Cars	434	40	
	220	9	M. Trucks	9	40	
	40	3	H. Trucks	3	40	
	40		Buses			
WB Rider – E to E Project Driveway	10415	434	Cars	434	40	
	220	9	M. Trucks	9	40	
	40	3	H. Trucks	3	40	
	40		Buses			
WB Rider – E Project Driveway to Perris	10300	429	Cars	429	40	
	220	9	M. Trucks	9	40	
	40	3	H. Trucks	3	40	
	40		Buses			
WB Rider – Perris to Redlands	8293	346	Cars	346	40	
	170	7	M. Trucks	7	40	
	30	3	H. Trucks	3	40	
	30		Buses			
SB Redlands – Rider to N Driveway	2703	113	Cars	113	40	
	90	4	M. Trucks	4	40	
	49	7	H. Trucks	7	40	
	123		Buses			
SB Redlands – N Driveway to S Driveway	2550	106	Cars	106	40	
	90	4	M. Trucks	4	40	
	49	7	H. Trucks	7	40	
	123		Buses			
SB Redlands – S Driveway to South	2665	111	Cars	111	40	
	60	3	M. Trucks	3	40	
	10	1	H. Trucks	1	40	
	10		Buses			
NB Redlands – S to S Driveway	2665	111	Cars	111	40	
	60	3	M. Trucks	3	40	
	10	1	H. Trucks	1	40	
	10		Buses			
NB Redlands – S Driveway to N Driveway	2550	106	Cars	106	40	
	90	4	M. Trucks	4	40	
	49	7	H. Trucks	7	40	
	123		Buses			
NB Redlands – N Driveway to N	2703	113	Cars	113	40	
	90	4	M. Trucks	4	40	
	49	7	H. Trucks	7	40	
	123		Buses			

Existing Plus Project Plus Placentia Interchange- Assumes ADT divided by 24 hours divided by 2 directions multiplied by 2 for

	ADT	Total Volume	Vehicle Type	Volume	Speed
EB Rider – Perris to Redlands	8331	347	Cars	347	40
	200	8	M. Trucks	8	40
	69	9	H. Trucks	9	40
	143		Buses		
EB Rider – Redlands to E Project Driveway	10300	429	Cars	429	40
	220	9	M. Trucks	9	40
	40	3	H. Trucks	3	40
	40		Buses		
EB Rider – E Project Driveway to E	10415	434	Cars	434	40
	220	9	M. Trucks	9	40
	40	3	H. Trucks	3	40
	40		Buses		
WB Rider – E to E Project Driveway	10415	434	Cars	434	40
	220	9	M. Trucks	9	40
	40	3	H. Trucks	3	40
	40		Buses		
WB Rider – E Project Driveway to Perris	10300	429	Cars	429	40
	220	9	M. Trucks	9	40
	40	3	H. Trucks	3	40
	40		Buses		
WB Rider – Perris to Redlands	8331	347	Cars	347	40
	200	8	M. Trucks	8	40
	69	9	H. Trucks	9	40
	143		Buses		
SB Redlands – Rider to N Driveway	2741	114	Cars	114	40
	90	4	M. Trucks	4	40
	49	7	H. Trucks	7	40
	123		Buses		
SB Redlands – N Driveway to S Driveway	2550	106	Cars	106	40
	90	4	M. Trucks	4	40
	49	7	H. Trucks	7	40
	123		Buses		
SB Redlands – S Driveway to South	2626	109	Cars	109	40
	60	3	M. Trucks	3	40
	10	1	H. Trucks	1	40
	10		Buses		
NB Redlands – S to S Driveway	2626	109	Cars	109	40
	60	3	M. Trucks	3	40
	10	1	H. Trucks	1	40
	10		Buses		
NB Redlands – S Driveway to N Driveway	2550	106	Cars	106	40
	90	4	M. Trucks	4	40
	49	7	H. Trucks	7	40
	123		Buses		
NB Redlands – N Driveway to N	2741	114	Cars	114	40
	90	4	M. Trucks	4	40
	49	7	H. Trucks	7	40
	123		Buses		

Existing Plus Ambient Growth Plus Cumulative Projects	Assumes ADT divided by 24 hours divided by 2 directions multiplied by 2 for peak				
	ADT	Total Volume			
EB Rider – Perris to Redlands	10433	435	Cars	435	40
	214	9	M. Trucks	9	40
	69	9	H. Trucks	9	40
	138		Buses		
EB Rider – Redlands to E Project Driveway	13613	567	Cars	567	40
	255	11	M. Trucks	11	40
	63	7	H. Trucks	7	40
	100		Buses		
EB Rider – E Project Driveway to E	13613	567	Cars	567	40
	255	11	M. Trucks	11	40
	63	7	H. Trucks	7	40
	100		Buses		
WB Rider – E to E Project Driveway	13613	567	Cars	567	40
	255	11	M. Trucks	11	40
	63	7	H. Trucks	7	40
	100		Buses		
WB Rider – E Project Driveway to Perris	13613	567	Cars	567	40
	255	11	M. Trucks	11	40
	63	7	H. Trucks	7	40
	100		Buses		
WB Rider – Perris to Redlands	10433	435	Cars	435	40
	214	9	M. Trucks	9	40
	69	9	H. Trucks	9	40
	138		Buses		
SB Redlands – Rider to N Driveway	3467	144	Cars	144	40
	66	3	M. Trucks	3	40
	11	1	H. Trucks	1	40
	11		Buses		
SB Redlands – N Driveway to S Driveway	3467	144	Cars	144	40
	66	3	M. Trucks	3	40
	11	1	H. Trucks	1	40
	11		Buses		
SB Redlands – S Driveway to South	3467	144	Cars	144	40
	66	3	M. Trucks	3	40
	11	1	H. Trucks	1	40
	11		Buses		
NB Redlands – S to S Driveway	3467	144	Cars	144	40
	66	3	M. Trucks	3	40
	11	1	H. Trucks	1	40
	11		Buses		
NB Redlands – S Driveway to N Driveway	3467	144	Cars	144	40
	66	3	M. Trucks	3	40
	11	1	H. Trucks	1	40
	11		Buses		
NB Redlands – N Driveway to N	3467	144	Cars	144	40
	66	3	M. Trucks	3	40
	11	1	H. Trucks	1	40
	11		Buses		

Existing Plus Ambient Growth Plus Cummulative Projects with Placentia Interchange						
	ADT	Total Volume	Vehicle Type	Volume	Speed	
EB Rider – Perris to Redlands	10586	441	Cars	441	40	
	214	9	M. Trucks	9	40	
	69	9	H. Trucks	9	40	
	138		Buses			
EB Rider – Redlands to E Project Driveway	13613	567	Cars	567	40	
	255	11	M. Trucks	11	40	
	63	7	H. Trucks	7	40	
	100		Buses			
EB Rider – E Project Driveway to E	13728	572	Cars	572	40	
	255	11	M. Trucks	11	40	
	63	7	H. Trucks	7	40	
	100		Buses			
WB Rider – E to E Project Driveway	13728	572	Cars	572	40	
	255	11	M. Trucks	11	40	
	63	7	H. Trucks	7	40	
	100		Buses			
WB Rider – E Project Driveway to Perris	13613	567	Cars	567	40	
	255	11	M. Trucks	11	40	
	63	7	H. Trucks	7	40	
	100		Buses			
WB Rider – Perris to Redlands	10586	441	Cars	441	40	
	214	9	M. Trucks	9	40	
	69	9	H. Trucks	9	40	
	138		Buses			
SB Redlands – Rider to N Driveway	3620	151	Cars	151	40	
	96	4	M. Trucks	4	40	
	50	7	H. Trucks	7	40	
	124		Buses			
SB Redlands – N Driveway to S Driveway	3467	144	Cars	144	40	
	96	4	M. Trucks	4	40	
	50	7	H. Trucks	7	40	
	124		Buses			
SB Redlands – S Driveway to South	3582	149	Cars	149	40	
	66	3	M. Trucks	3	40	
	11	1	H. Trucks	1	40	
	11		Buses			
NB Redlands – S to S Driveway	3582	149	Cars	149	40	
	66	3	M. Trucks	3	40	
	11	1	H. Trucks	1	40	
	11		Buses			
NB Redlands – S Driveway to N Driveway	3467	144	Cars	144	40	
	96	4	M. Trucks	4	40	
	50	7	H. Trucks	7	40	
	124		Buses			
NB Redlands – N Driveway to N	3620	151	Cars	151	40	
	96	4	M. Trucks	4	40	
	50	7	H. Trucks	7	40	
	124		Buses			

Existing Plus Ambient Growth Plus Cumulative Projects with Placentia Interchange						
	ADT	Total				
EB Rider – Perris to Redlands	10433	435	Cars	435	40	
	290	12	M. Trucks	12	40	
	145	21	H. Trucks	21	40	
	365		Buses			
EB Rider – Redlands to E Project Driveway	13613	567	Cars	567	40	
	255	11	M. Trucks	11	40	
	63	7	H. Trucks	7	40	
	100		Buses			
EB Rider – E Project Driveway to E	13613	567	Cars	567	40	
	255	11	M. Trucks	11	40	
	63	7	H. Trucks	7	40	
	100		Buses			
WB Rider – E to E Project Driveway	13613	567	Cars	567	40	
	255	11	M. Trucks	11	40	
	63	7	H. Trucks	7	40	
	100		Buses			
WB Rider – E Project Driveway to Perris	13613	567	Cars	567	40	
	255	11	M. Trucks	11	40	
	63	7	H. Trucks	7	40	
	100		Buses			
WB Rider – Perris to Redlands	10433	435	Cars	435	40	
	290	12	M. Trucks	12	40	
	145	21	H. Trucks	21	40	
	365		Buses			
SB Redlands – Rider to N Driveway	3467	144	Cars	144	40	
	66	3	M. Trucks	3	40	
	11	1	H. Trucks	1	40	
	11		Buses			
SB Redlands – N Driveway to S Driveway	3467	144	Cars	144	40	
	66	3	M. Trucks	3	40	
	11	1	H. Trucks	1	40	
	11		Buses			
SB Redlands – S Driveway to South	3467	144	Cars	144	40	
	66	3	M. Trucks	3	40	
	11	1	H. Trucks	1	40	
	11		Buses			
NB Redlands – S to S Driveway	3467	144	Cars	144	40	
	66	3	M. Trucks	3	40	
	11	1	H. Trucks	1	40	
	11		Buses			
NB Redlands – S Driveway to N Driveway	3467	144	Cars	144	40	
	66	3	M. Trucks	3	40	
	11	1	H. Trucks	1	40	
	11		Buses			
NB Redlands – N Driveway to N	3467	144	Cars	144	40	
	66	3	M. Trucks	3	40	
	11	1	H. Trucks	1	40	
	11		Buses			

Existing Plus Ambient Growth Plus Cumulative Projects Plus Project with Placentia Interchange						
	ADT	Total				
EB Rider – Perris to Redlands	10624	443	Cars	443	40	
	320	13	M. Trucks	13	40	
	184	28	H. Trucks	28	40	
	478		Buses			
EB Rider – Redlands to E Project Driveway	13613	567	Cars	567	40	
	255	11	M. Trucks	11	40	
	63	7	H. Trucks	7	40	
	100		Buses			
EB Rider – E Project Driveway to E	13728	572	Cars	572	40	
	255	11	M. Trucks	11	40	
	63	7	H. Trucks	7	40	
	100		Buses			
WB Rider – E to E Project Driveway	13728	572	Cars	572	40	
	255	11	M. Trucks	11	40	
	63	7	H. Trucks	7	40	
	100		Buses			
WB Rider – E Project Driveway to Perris	13613	567	Cars	567	40	
	255	11	M. Trucks	11	40	
	63	7	H. Trucks	7	40	
	100		Buses			
WB Rider – Perris to Redlands	10624	443	Cars	443	40	
	320	13	M. Trucks	13	40	
	184	28	H. Trucks	28	40	
	478		Buses			
SB Redlands – Rider to N Driveway	3658	152	Cars	152	40	
	96	4	M. Trucks	4	40	
	50	7	H. Trucks	7	40	
	124		Buses			
SB Redlands – N Driveway to S Driveway	3467	144	Cars	144	40	
	96	4	M. Trucks	4	40	
	50	7	H. Trucks	7	40	
	124		Buses			
SB Redlands – S Driveway to South	3543	148	Cars	148	40	
	66	3	M. Trucks	3	40	
	11	1	H. Trucks	1	40	
	11		Buses			
NB Redlands – S to S Driveway	3543	148	Cars	148	40	
	66	3	M. Trucks	3	40	
	11	1	H. Trucks	1	40	
	11		Buses			
NB Redlands – S Driveway to N Driveway	3467	144	Cars	144	40	
	96	4	M. Trucks	4	40	
	50	7	H. Trucks	7	40	
	124		Buses			
NB Redlands – N Driveway to N	3658	152	Cars	152	40	
	96	4	M. Trucks	4	40	
	50	7	H. Trucks	7	40	
	124		Buses			

Receiver	X	Y	Z
R1	467.6	2594.1	1455.7
R2	1001.3	2587	1454.7
R3	2742.9	2593.8	1444.3
R4	3831.3	2318.3	1445.7
R5	5371.3	2766.8	1448
R6	147.2	199.6	1452.4
R7	2338.5	321.8	1446.2
R8	2904.1	710.4	1442.8

Roadway geometry			
EB Rider - Perris to Lake View-1	x	y	altitude(ft)
EB Rider - Perris to Lake View-1		97.4	2648.3 1454
EB Rider - Perris to Lake View-2		407.4	2648.7 1451.9
EB Rider - Perris to Lake View-3		725	2649.1 1449.9
EB Rider - Perris to Lake View-4		886.2	2650.4 1449.3
EB Rider - Lake View to Redlands-1	x	y	altitude(ft)
EB Rider - Lake View to Redlands-1		887.9	2650.3 1449.3
EB Rider - Lake View to Redlands-2		1192.1	2649.8 1446.1
EB Rider - Lake View to Redlands-3		1494.8	2651.6 1445
EB Rider - Lake View to Redlands-4		1762.4	2652.1 1444.3
EB Rider - Lake View to Redlands-5		2057.8	2652 1443.6
EB Rider - Lake View to Redlands-6		2340.7	2652 1442.9
EB Rider - Lake View to Redlands-7		2681.5	2647.5 1443.7
EB Rider - Redlands to E Driveway-1	x	y	altitude(ft)
EB Rider - Redlands to E Driveway-1		2693.6	2647.7 1443.5
EB Rider - Redlands to E Driveway-2		2874.5	2651.6 1442.1
EB Rider - Redlands to E Driveway-3		3050.6	2658.4 1440.6
EB Rider - E Driveway to Wilson-1	x	y	altitude(ft)
EB Rider - E Driveway to Wilson-1		3052.6	2658.4 1440.6
EB Rider - E Driveway to Wilson-2		3128.5	2662.2 1441.9
EB Rider - E Driveway to Wilson-3		3363.8	2665.5 1441.1
EB Rider - E Driveway to Wilson-4		3567	2665.9 1439.9
EB Rider - E Driveway to Wilson-5		3888.2	2654.1 1440.1
EB Rider - E Driveway to Wilson-6		3982.2	2654.5 1440.4
EB Rider - Wilson to Galway-1	x	y	altitude(ft)
EB Rider - Wilson to Galway-1		3993.3	2654.2 1440.4
EB Rider - Wilson to Galway-2		4258.4	2659.9 1439.4
EB Rider - Wilson to Galway-3		4426.4	2665.1 1438.3
EB Rider - Wilson to Galway-4		4636.1	2670.8 1437.3
EB Rider - Wilson to Galway-5		4839.8	2674.6 1437
EB Rider - Wilson to Galway-6		5081.6	2675.1 1438.3
EB Rider - Wilson to Galway-7		5303	2674.6 1438.6
EB Rider - Wilson to Galway-8		5600.4	2672.6 1438.6
EB Rider - Wilson to Galway-9		5887.5	2673.5 1439.7
EB Rider - Galway to Evans-1	x	y	altitude(ft)
EB Rider - Galway to Evans-1		5898.4	2672 1439.7
EB Rider - Galway to Evans-2		6227.2	2676.1 1441.2
EB Rider - Galway to Evans-3		6625.5	2676.1 1441.9
WB Rider - Evans to Galway-1	x	y	altitude(ft)
WB Rider - Evans to Galway-1		6625.6	2709.5 1441.9
WB Rider - Evans to Galway-2		6370.8	2711.2 1442.6
WB Rider - Evans to Galway-3		6068.9	2709.6 1440.4
WB Rider - Evans to Galway-4		5896.7	2709 1440.1
WB Rider - Galway to Wilson-1	x	y	altitude(ft)
WB Rider - Galway to Wilson-1		5892.8	2708.5 1440.1
WB Rider - Galway to Wilson-2		5621.3	2706.3 1438.8
WB Rider - Galway to Wilson-3		5349.1	2700.6 1438.3
WB Rider - Galway to Wilson-4		5091.6	2698.4 1438.3

WB Rider - Galway to Wilson-5		4816.3	2696.2	1437.2
WB Rider - Galway to Wilson-6		4587.2	2693.4	1438.5
WB Rider - Galway to Wilson-7		4337.7	2690.6	1440.8
WB Rider - Galway to Wilson-8		3990.1	2684.2	1440.6
WB Rider - Wilson to E Driveway-1	x		y	altitude(ft)
WB Rider - Wilson to E Driveway-1		3986.1	2683.7	1440.6
WB Rider - Wilson to E Driveway-2		3770.4	2686.6	1440.1
WB Rider - Wilson to E Driveway-3		3533.9	2683.7	1439.9
WB Rider - Wilson to E Driveway-4		3169.9	2681.4	1441.7
WB Rider - Wilson to E Driveway-5		3055.3	2681.9	1440.4
WB Rider - E Driveway to Redlands-1	x		y	altitude(ft)
WB Rider - E Driveway to Redlands-1		3051.4	2681.4	1440.5
WB Rider - E Driveway to Redlands-2		2689	2682.9	1442.8
WB Rider - Redlands to Lake View-1	x		y	altitude(ft)
WB Rider - Redlands to Lake View-1		2686.8	2683.8	1442.8
WB Rider - Redlands to Lake View-2		2441.6	2680.3	1442.7
WB Rider - Redlands to Lake View-3		2125.9	2676.9	1444.4
WB Rider - Redlands to Lake View-4		1796.9	2676.9	1444.3
WB Rider - Redlands to Lake View-5		1478.4	2680.9	1445.5
WB Rider - Redlands to Lake View-6		1178.8	2685	1446.6
WB Rider - Redlands to Lake View-7		890.2	2687.3	1449
WB Rider - Lake View to Perris-1	x		y	altitude(ft)
WB Rider - Lake View to Perris-1		881.2	2687.2	1449.1
WB Rider - Lake View to Perris-2		456.2	2689.2	1451.6
WB Rider - Lake View to Perris-3		92.7	2687.2	1454.8
EB Placentia - Perris to Spokane-1	x		y	altitude(ft)
EB Placentia - Perris to Spokane-1		89.2	23.3	1446.8
EB Placentia - Perris to Spokane-2		222.1	20.8	1445.2
EB Placentia - Perris to Spokane-3		323.8	3.3	1444.6
EB Placentia - Perris to Spokane-4		474.9	0	1443.5
EB Placentia - Perris to Spokane-5		630.4	8.3	1443.8
EB Placentia - Perris to Spokane-6		893.1	10.9	1443.2
EB Placentia - Perris to Spokane-7		1198.2	13.4	1442.2
EB Placentia - Perris to Spokane-8		1406.1	14.2	1442.2
EB Placentia - Spokane to Redlands-1	x		y	altitude(ft)
EB Placentia - Spokane to Redlands-1		1413.3	14.4	1442.2
EB Placentia - Spokane to Redlands-2		1814.4	17.1	1444.4
EB Placentia - Spokane to Redlands-3		2198.8	25.3	1441.1
EB Placentia - Spokane to Redlands-4		2434.3	33	1442.9
EB Placentia - Spokane to Redlands-5		2674.9	34.4	1443.2
EB Placentia - Redlands to Wilson-1	x		y	altitude(ft)
EB Placentia - Redlands to Wilson-1		2679.4	34.4	1443.2
EB Placentia - Redlands to Wilson-2		2798.5	37.8	1442.8
EB Placentia - Redlands to Wilson-3		2980.3	38.2	1442.6
EB Placentia - Redlands to Wilson-4		3223.9	38.2	1440.9
EB Placentia - Redlands to Wilson-5		3476.9	38.2	1441.2
EB Placentia - Redlands to Wilson-6		3773.3	45.9	1441.2
EB Placentia - Redlands to Wilson-7		3996	48.2	1440.2

WB Placentia - Wilson to Redlands-1	x	y	altitude(ft)
WB Placentia - Wilson to Redlands-1	3995.1	67.9	1439.8
WB Placentia - Wilson to Redlands-2	3713.6	65.1	1440.2
WB Placentia - Wilson to Redlands-3	3406.5	63.8	1441
WB Placentia - Wilson to Redlands-4	3074.9	62.8	1442.4
WB Placentia - Wilson to Redlands-5	2680.7	64.7	1442.9
WB Placentia - Redlands to Spokane-1	x	y	altitude(ft)
WB Placentia - Redlands to Spokane-1	2674	64.5	1442.8
WB Placentia - Redlands to Spokane-2	2227.8	62.2	1441.1
WB Placentia - Redlands to Spokane-3	1844.2	56.7	1443.2
WB Placentia - Redlands to Spokane-4	1407.2	53.1	1441.9
WB Placentia - Spokane to Perris-1	x	y	altitude(ft)
WB Placentia - Spokane to Perris-1	1402.2	53.1	1441.8
WB Placentia - Spokane to Perris-2	1060.1	49.4	1443
WB Placentia - Spokane to Perris-3	716.1	47.5	1443.9
WB Placentia - Spokane to Perris-4	464.5	45.7	1443.5
WB Placentia - Spokane to Perris-5	345.6	53.9	1443.6
WB Placentia - Spokane to Perris-6	226.7	64.9	1444.8
WB Placentia - Spokane to Perris-7	79.9	67.1	1446.3
NB Perris - Placentia to Rider-1	x	y	altitude(ft)
NB Perris - Placentia to Rider-1	43.7	54.2	1445.6
NB Perris - Placentia to Rider-2	43.1	277.4	1451.1
NB Perris - Placentia to Rider-3	44.3	535.6	1452.4
NB Perris - Placentia to Rider-4	43.8	795.3	1452.6
NB Perris - Placentia to Rider-5	44.8	1060.1	1454.5
NB Perris - Placentia to Rider-6	47.3	1315	1456.7
NB Perris - Placentia to Rider-7	47.3	1585	1458.7
NB Perris - Placentia to Rider-8	49.3	1787.3	1455.4
NB Perris - Placentia to Rider-9	44.1	2221.5	1457.3
NB Perris - Placentia to Rider-10	48.5	2448.7	1455.8
NB Perris - Placentia to Rider-11	46.3	2659.6	1454.2
SB Perris - Rider to Placentia-1	x	y	altitude(ft)
SB Perris - Rider to Placentia-1	3.1	2658.6	1454.2
SB Perris - Rider to Placentia-2	0	2436.6	1458.7
SB Perris - Rider to Placentia-3	3.7	2208.9	1457.9
SB Perris - Rider to Placentia-4	4.7	2004.3	1457.3
SB Perris - Rider to Placentia-5	5.8	1808.6	1455.6
SB Perris - Rider to Placentia-6	5.8	1581	1458.7
SB Perris - Rider to Placentia-7	6.9	1345.9	1456.8
SB Perris - Rider to Placentia-8	7.4	1108.8	1454.4
SB Perris - Rider to Placentia-9	6.9	892.5	1453.4
SB Perris - Rider to Placentia-10	7	618	1452.3
SB Perris - Rider to Placentia-11	6.5	342.8	1449.3
SB Perris - Rider to Placentia-12	7.5	51.2	1445.8
NB Redlands - Placentia to S Driveway-1	x	y	altitude(ft)
NB Redlands - Placentia to S Driveway-1	2693.9	67.5	1443.1
NB Redlands - Placentia to S Driveway-2	2694.8	269	1443.9
NB Redlands - Placentia to S Driveway-3	2694.3	472.5	1443.7
NB Redlands - Placentia to S Driveway-4	2692.5	668.4	1442.7
NB Redlands - Placentia to S Driveway-5	2691.4	900.8	1443.7
NB Redlands - Placentia to S Driveway-6	2690.7	1146	1443.3

NB Redlands - Placentia to S Driveway-7		2689.2	1366.1	1442.9
NB Redlands - Placentia to S Driveway-8		2688.7	1623.5	1444
NB Redlands - S Driveway to N Driveway-1	x		y	altitude(ft)
NB Redlands - S Driveway to N Driveway-1		2688.3	1627.9	1444
NB Redlands - S Driveway to N Driveway-2		2689.7	1805.9	1447.3
NB Redlands - S Driveway to N Driveway-3		2690.7	1949.3	1447.9
NB Redlands - S Driveway to N Driveway-4		2691.2	2080.8	1447.3
NB Redlands - N Driveway to Rider-1	x		y	altitude(ft)
NB Redlands - N Driveway to Rider-1		2690.7	2083.2	1447.3
NB Redlands - N Driveway to Rider-2		2691.2	2254.2	1445.3
NB Redlands - N Driveway to Rider-3		2696.5	2348.5	1444.4
NB Redlands - N Driveway to Rider-4		2696.5	2439.7	1443.9
NB Redlands - N Driveway to Rider-5		2691.2	2521	1443.8
NB Redlands - N Driveway to Rider-6		2692.1	2643.4	1443.6
SB Redlands - S Driveway to Placentia-1	x		y	altitude(ft)
SB Redlands - S Driveway to Placentia-1		2678.3	1623	1444
SB Redlands - S Driveway to Placentia-2		2679.2	1262.5	1443.5
SB Redlands - S Driveway to Placentia-3		2679.6	1003.4	1443.4
SB Redlands - S Driveway to Placentia-4		2680.3	810.4	1442.4
SB Redlands - S Driveway to Placentia-5		2681.8	556.6	1443.3
SB Redlands - S Driveway to Placentia-6		2680.7	436.8	1443.8
SB Redlands - S Driveway to Placentia-7		2673.3	346.4	1443.7
SB Redlands - S Driveway to Placentia-8		2669.2	190.4	1443.6
SB Redlands - S Driveway to Placentia-9		2667.3	68.2	1442.7
NB Wilson - Placentia to Rider-1	x		y	altitude(ft)
NB Wilson - Placentia to Rider-1		4008.9	71	1439.8
NB Wilson - Placentia to Rider-2		4006.5	357.1	1437.6
NB Wilson - Placentia to Rider-3		4005.2	643.7	1437.2
NB Wilson - Placentia to Rider-4		4004	959.7	1437.2
NB Wilson - Placentia to Rider-5		4002.8	1209.5	1436.9
NB Wilson - Placentia to Rider-6		4003.6	1495.4	1438.8
NB Wilson - Placentia to Rider-7		4002.4	1754.1	1441.8
NB Wilson - Placentia to Rider-8		4001.2	1981.6	1438.7
NB Wilson - Placentia to Rider-9		4000.7	2228.4	1443.1
NB Wilson - Placentia to Rider-10		3999.9	2468.6	1443
NB Wilson - Placentia to Rider-11		3999.1	2651.9	1440.4
SB Wilson - Rider to Placentia-1	x		y	altitude(ft)
SB Wilson - Rider to Placentia-1		3978.4	2651.5	1440.4
SB Wilson - Rider to Placentia-2		3979.7	2414.6	1441.6
SB Wilson - Rider to Placentia-3		3980.5	2110.8	1440.8
SB Wilson - Rider to Placentia-4		3981.3	1832	1439.7
SB Wilson - Rider to Placentia-5		3983.4	1567.5	1439.6
SB Wilson - Rider to Placentia-6		3982.5	1328.3	1437
SB Wilson - Rider to Placentia-7		3983.4	1071.3	1436.9
SB Wilson - Rider to Placentia-8		3983.4	857	1437.1
SB Wilson - Rider to Placentia-9		3984.6	583.5	1437.3
SB Wilson - Rider to Placentia-10		3984.2	298.8	1438.3
SB Wilson - Rider to Placentia-11		3987.1	70	1439.8
SB Redlands - Rider to N Driveway-1	x		y	altitude(ft)
SB Redlands - Rider to N Driveway-1		2676.4	2642.6	1443.9

SB Redlands - Rider to N Driveway-2	2675.3	2511.3	1443.8
SB Redlands - Rider to N Driveway-3	2675.1	2370.5	1444.7
SB Redlands - Rider to N Driveway-4	2679.1	2191.9	1445.6
SB Redlands - Rider to N Driveway-5	2678.7	2084.9	1446.8
SB Redlands - N Driveway to S Driveway-1	x	y	altitude(ft)
SB Redlands - N Driveway to S Driveway-1	2678.7	2082.7	1446.8
SB Redlands - N Driveway to S Driveway-2	2678.3	1969.3	1447.1
SB Redlands - N Driveway to S Driveway-3	2677.9	1769.6	1445.6
SB Redlands - N Driveway to S Driveway-4	2677.9	1626.6	1444

Appendix C-RCNM Results

Roadway Construction Noise Model (RCNM),Version 1.1															
Report date:	7/27/2020														
Case Description:	First Industrial Warehouse at E. Rider St/Redlands Avenue														
Demolition															
	---- Receptor #2 ----														
	Baselines (dBA)														
Description	Land Use	Daytime	Evening	Night											
Rep-3	Residential	60	57.1	58.1											
	Equipment														
		Spec	Actual	Receptor	Estimated										
		Impact	Lmax	Lmax	Distance	Shielding									
Description		Device	Usage(%)	(dBA)	(dBA)	(feet)	(dBA)								
Concrete Saw		No	20		89.6	185	0								
Front End Loader		No	40		79.1	185	0								
Forklift-FIRR		No	20		80	185	0								
Forklift-FIRR		No	20		80	185	0								
Generator		No	74	82		185	0								
Tractor/Loader/Backhoe-FIRR		No	37	80		185	0								
Tractor/Loader/Backhoe-FIRR		No	37	80		185	0								
Tractor/Loader/Backhoe-FIRR		No	37	80		185	0								
Welder-FIRR		No	45		74	185	0								
	Results														
	Calculated (dBA)			Noise Limits (dBA)				Noise Limit Exceedance (dBA)							
			Day		Evening		Night		Day		Evening		Night		
Equipment	*Lmax	Leq	Lmax	Leq	Lmax	Leq	Lmax	Leq	Lmax	Leq	Lmax	Leq	Lmax	Leq	
Concrete Saw	78.2	71.2	N/A	N/A	N/A	N/A	N/A	N/A	N/A	N/A	N/A	N/A	N/A	N/A	
Front End Loader	67.7	63.8	N/A	N/A	N/A	N/A	N/A	N/A	N/A	N/A	N/A	N/A	N/A	N/A	
Forklift-FIRR	68.6	61.6	N/A	N/A	N/A	N/A	N/A	N/A	N/A	N/A	N/A	N/A	N/A	N/A	
Forklift-FIRR	68.6	61.6	N/A	N/A	N/A	N/A	N/A	N/A	N/A	N/A	N/A	N/A	N/A	N/A	
Generator	70.6	69.3	N/A	N/A	N/A	N/A	N/A	N/A	N/A	N/A	N/A	N/A	N/A	N/A	
Tractor/Loader/Backhoe-FIRR	68.6	64.3	N/A	N/A	N/A	N/A	N/A	N/A	N/A	N/A	N/A	N/A	N/A	N/A	
Tractor/Loader/Backhoe-FIRR	68.6	64.3	N/A	N/A	N/A	N/A	N/A	N/A	N/A	N/A	N/A	N/A	N/A	N/A	
Tractor/Loader/Backhoe-FIRR	68.6	64.3	N/A	N/A	N/A	N/A	N/A	N/A	N/A	N/A	N/A	N/A	N/A	N/A	
Welder-FIRR	62.6	59.2	N/A	N/A	N/A	N/A	N/A	N/A	N/A	N/A	N/A	N/A	N/A	N/A	
	Total	78.2	75.6	N/A	N/A	N/A	N/A	N/A	N/A	N/A	N/A	N/A	N/A	N/A	
	*Calculated Lmax is the Loudest value.														

Roadway Construction Noise Model (RCNM),Version 1.1															
Report date:	7/27/2020														
Case Description:	First Industrial Warehouse at E. Rider St/Redlands Avenue														
Site Preparation															
	---- Receptor #2 ----														
	Baselines (dBA)														
Description	Land Use	Daytime	Evening	Night											
Rop-3	Residential	60	57.1	58.1											
	Equipment														
				Spec	Actual	Receptor	Estimated								
		Impact		Lmax	Lmax	Distance	Shielding								
Description		Device	Usage(%)	(dBA)	(dBA)	(feet)	(dBA)								
Tractor/Loader/Backhoe-FIRR		No	37	80		185	0								
Tractor/Loader/Backhoe-FIRR		No	37	80		185	0								
Tractor/Loader/Backhoe-FIRR		No	37	80		185	0								
Tractor/Loader/Backhoe-FIRR		No	37		77.6	185	0								
Rubber Tired Dozer-FIRR		No	40		81.7	185	0								
	Results														
	Calculated (dBA)			Noise Limits (dBA)				Noise Limit Exceedance (dBA)							
				Day		Evening		Night		Day		Evening		Night	
Equipment	*Lmax	Leq		Lmax	Leq	Lmax	Leq	Lmax	Leq	Lmax	Leq	Lmax	Leq	Lmax	Leq
Tractor/Loader/Backhoe-FIRR	68.6	64.3	N/A	N/A	N/A	N/A	N/A	N/A	N/A	N/A	N/A	N/A	N/A	N/A	N/A
Tractor/Loader/Backhoe-FIRR	68.6	64.3	N/A	N/A	N/A	N/A	N/A	N/A	N/A	N/A	N/A	N/A	N/A	N/A	N/A
Tractor/Loader/Backhoe-FIRR	68.6	64.3	N/A	N/A	N/A	N/A	N/A	N/A	N/A	N/A	N/A	N/A	N/A	N/A	N/A
Tractor/Loader/Backhoe-FIRR	66.2	61.9	N/A	N/A	N/A	N/A	N/A	N/A	N/A	N/A	N/A	N/A	N/A	N/A	N/A
Rubber Tired Dozer-FIRR	70.3	66.4	N/A	N/A	N/A	N/A	N/A	N/A	N/A	N/A	N/A	N/A	N/A	N/A	N/A
	Total	70.3	71.5	N/A	N/A	N/A	N/A	N/A	N/A	N/A	N/A	N/A	N/A	N/A	N/A
	*Calculated Lmax is the Loudest value.														

Roadway Construction Noise Model (RCNM),Version 1.1																
Report date:	7/27/2020															
Case Description:	First Industrial Warehouse at E. Rider St/Redlands Avenue															
Grading																
	---- Receptor #2 ----															
	Baselines (dBA)															
Description	Land Use	Daytime	Evening	Night												
Rop-3	Residential	60	57.1	58.1												
					Equipment											
					Spec	Actual	Receptor	Estimated								
		Impact			Lmax	Lmax	Distance	Shielding								
Description		Device	Usage(%)	(dBA)	(dBA)	(feet)	(dBA)									
Excavator-FIRR		No	38		80.7	185	0									
Excavator-FIRR		No	38		80.7	185	0									
Grader		No	40	85		185	0									
Rubber Tired Dozer-FIRR		No	40		81.7	185	0									
Scraper-FIRR		No	48		83.6	185	0									
Scraper-FIRR		No	48		83.6	185	0									
					Results											
		Calculated (dBA)			Noise Limits (dBA)				Noise Limit Exceedance (dBA)							
				Day	Evening		Night		Day	Evening		Night				
Equipment		*Lmax	Leq	Lmax	Leq	Lmax	Leq	Lmax	Leq	Lmax	Leq	Lmax	Leq	Lmax	Leq	
Excavator-FIRR		69.3	65.1	N/A	N/A	N/A	N/A	N/A	N/A	N/A	N/A	N/A	N/A	N/A	N/A	
Excavator-FIRR		69.3	65.1	N/A	N/A	N/A	N/A	N/A	N/A	N/A	N/A	N/A	N/A	N/A	N/A	
Grader		73.6	69.7	N/A	N/A	N/A	N/A	N/A	N/A	N/A	N/A	N/A	N/A	N/A	N/A	
Rubber Tired Dozer-FIRR		70.3	66.4	N/A	N/A	N/A	N/A	N/A	N/A	N/A	N/A	N/A	N/A	N/A	N/A	
Scraper-FIRR		72.2	69	N/A	N/A	N/A	N/A	N/A	N/A	N/A	N/A	N/A	N/A	N/A	N/A	
Scraper-FIRR		72.2	69	N/A	N/A	N/A	N/A	N/A	N/A	N/A	N/A	N/A	N/A	N/A	N/A	
	Total	73.6	75.6	N/A	N/A	N/A	N/A	N/A	N/A	N/A	N/A	N/A	N/A	N/A	N/A	
	*Calculated Lmax is the Loudest value.															

Roadway Construction Noise Model (RCNM),Version 1.1																
Report date:	7/27/2020															
Case Description:	First Industrial Warehouse at E. Rider St/Redlands Avenue															
Building Construction	----- Receptor #2 -----															
	Baselines (dBA)															
Description	Land Use	Daytime	Evening	Night												
Rop-3	Residential	60	57.1	58.1												
	Equipment															
				Spec	Actual	Receptor	Estimated									
		Impact		Lmax	Lmax	Distance	Shielding									
Description		Device	Usage(%)	(dBA)	(dBA)	(feet)	(dBA)									
Cranes		No	29		80.6	185	0									
Forklift-FIRR		No	20		80	185	0									
Forklift-FIRR		No	20		80	185	0									
Forklift-FIRR		No	20		80	185	0									
Generator		No	74		80.6	185	0									
Tractor/Loader/Backhoe-FIRR		No	37		77.6	185	0									
Tractor/Loader/Backhoe-FIRR		No	37		77.6	185	0									
Tractor/Loader/Backhoe-FIRR		No	37		77.6	185	0									
Welder-FIRR		No	45		74	185	0									
	Results															
	Calculated (dBA)			Noise Limits (dBA)				Noise Limit Exceedance (dBA)								
				Day		Evening		Night		Day		Evening		Night		
Equipment		*Lmax	Leq	Lmax	Leq	Lmax	Leq	Lmax	Leq	Lmax	Leq	Lmax	Leq	Lmax	Leq	
Cranes		69.2	63.9	N/A	N/A	N/A	N/A	N/A	N/A	N/A	N/A	N/A	N/A	N/A	N/A	
Forklift-FIRR		68.6	61.6	N/A	N/A	N/A	N/A	N/A	N/A	N/A	N/A	N/A	N/A	N/A	N/A	
Forklift-FIRR		68.6	61.6	N/A	N/A	N/A	N/A	N/A	N/A	N/A	N/A	N/A	N/A	N/A	N/A	
Forklift-FIRR		68.6	61.6	N/A	N/A	N/A	N/A	N/A	N/A	N/A	N/A	N/A	N/A	N/A	N/A	
Generator		69.2	67.9	N/A	N/A	N/A	N/A	N/A	N/A	N/A	N/A	N/A	N/A	N/A	N/A	
Tractor/Loader/Backhoe-FIRR		66.2	61.9	N/A	N/A	N/A	N/A	N/A	N/A	N/A	N/A	N/A	N/A	N/A	N/A	
Tractor/Loader/Backhoe-FIRR		66.2	61.9	N/A	N/A	N/A	N/A	N/A	N/A	N/A	N/A	N/A	N/A	N/A	N/A	
Tractor/Loader/Backhoe-FIRR		66.2	61.9	N/A	N/A	N/A	N/A	N/A	N/A	N/A	N/A	N/A	N/A	N/A	N/A	
Welder-FIRR		62.6	59.2	N/A	N/A	N/A	N/A	N/A	N/A	N/A	N/A	N/A	N/A	N/A	N/A	
	Total	69.2	72.7	N/A	N/A	N/A	N/A	N/A	N/A	N/A	N/A	N/A	N/A	N/A	N/A	
	*Calculated Lmax is the Loudest value.															

Roadway Construction Noise Model (RCNM),Version 1.1																
Report date:	7/27/2020															
Case Description:	First Industrial Warehouse at E. Rider St/Redlands Avenue															
Paving																
	---- Receptor #2 ----															
	Baselines (dBA)															
Description	Land Use	Daytime	Evening	Night												
Pop-3	Residential	60	57.1	58.1												
	Equipment															
				Spec	Actual	Receptor	Estimated									
		Impact		Lmax	Lmax	Distance	Shielding									
Description		Device	Usage(%)	(dBA)	(dBA)	(feet)	(dBA)									
Paving Equipment-FIRR		No	36		89.5	185	0									
Pavers-FIRR		No	42		77.2	185	0									
Rollers-FIRR		No	38		80	185	0									
	Results															
		Calculated (dBA)			Noise Limits (dBA)				Noise Limit Exceedance (dBA)							
				Day	Evening			Night			Day		Evening		Night	
Equipment		*Lmax	Leq	Lmax	Leq	Lmax	Leq	Lmax	Leq	Lmax	Leq	Lmax	Leq	Lmax	Leq	
Paving Equipment-FIRR		78.1	73.7	N/A	N/A	N/A	N/A	N/A	N/A	N/A	N/A	N/A	N/A	N/A	N/A	
Pavers-FIRR		65.8	62.1	N/A	N/A	N/A	N/A	N/A	N/A	N/A	N/A	N/A	N/A	N/A	N/A	
Rollers-FIRR		68.6	64.4	N/A	N/A	N/A	N/A	N/A	N/A	N/A	N/A	N/A	N/A	N/A	N/A	
	Total	78.1	74.4	N/A	N/A	N/A	N/A	N/A	N/A	N/A	N/A	N/A	N/A	N/A	N/A	
		*Calculated Lmax is the Loudest value.														

Roadway Construction Noise Model (RCNM),Version 1.1																
Report date:	7/27/2020															
Case Description:	First Industrial Warehouse at E. Rider St/Redlands Avenue															
Painting																
	---- Receptor #2 ----															
	Baselines (dBA)															
Description	Land Use	Daytime	Evening	Night												
Rop-3	Residential	60	57.1	58.1												
	Equipment															
				Spec	Actual	Receptor	Estimated									
		Impact		Lmax	Lmax	Distance	Shielding									
Description		Device	Usage(%)	(dBA)	(dBA)	(feet)	(dBA)									
Air Compressor-FIRR		No	48		77.7	185	0									
	Results															
	Calculated (dBA)				Noise Limits (dBA)				Noise Limit Exceedance (dBA)							
				Day		Evening		Night		Day		Evening		Night		
Equipment		*Lmax	Leq	Lmax	Leq	Lmax	Leq	Lmax	Leq	Lmax	Leq	Lmax	Leq	Lmax	Leq	
Air Compressor-FIRR		66.3	63.1	N/A	N/A	N/A	N/A	N/A	N/A	N/A	N/A	N/A	N/A	N/A	N/A	
	Total	66.3	63.1	N/A	N/A	N/A	N/A	N/A	N/A	N/A	N/A	N/A	N/A	N/A	N/A	
	*Calculated Lmax is the Loudest value.															