



**Daniel Kim**  
**Interim County Administrator**

Office of the County Administrator  
**COUNTY OF YOLO**

---

**NATURAL RESOURCES DIVISION**  
625 Court Street, Room 202  
Woodland, CA 95695  
P: 530-666-8150 • F: 530-668-4029  
[www.yolonaturalresources.org](http://www.yolonaturalresources.org)  
[naturalresources@yolocounty.org](mailto:naturalresources@yolocounty.org)

**NOTICE OF INTENT TO  
ADOPT A MITIGATED NEGATIVE DECLARATION**

Notice is hereby given that Yolo County, as lead agency, has prepared an Initial Study/Mitigated Negative Declaration (IS/MND) for the below referenced project. The IS/MND analyzes the potential physical environmental effects associated with project implementation. Yolo County has prepared this Notice of Intent (NOI) in accordance with California Environmental Quality Act (CEQA) requirements (Section 15072). The purpose of the NOI is to provide responsible agencies and other interested parties with written notice of the availability of the IS/MND, and solicit comments and concerns regarding environmental issues associated with the proposed project.

**LEAD AGENCY:** Yolo County Administrator's Office  
625 Court Street, Room 202  
Woodland, CA 95695

**CONTACT PERSON:** Casey Liebler, Natural Resources Program Coordinator  
(530) 666-8236  
[Casey.Liebler@yolocounty.org](mailto:Casey.Liebler@yolocounty.org)

**PROJECT TITLE:** Huff's Corner Levee Raise & Channel Reconfiguration Project

**PROJECT LOCATION:** Rural Yolo County along the right bank and within the active channel of Lower Cache Creek, upstream of Interstate 5, north of the City of Woodland.

The Project occurs on portions of the following parcels: 025-320-004; 025-320-010; 027-180-019; 025-310-025; 025-310-044; and 025-320-005.

**PROJECT INFORMATION:**

General Background

The section of Cache Creek known as "Huff's Corner" is a small reach on the right bank extending approximately 2,700-feet upstream from Interstate 5 (I-5), north of Woodland, in unincorporated Yolo County. The levee at Huff's Corner was initially constructed by the U.S. Army Corps of Engineers (USACE), although the precise date of construction is unknown. Topographic maps suggest this segment of the levee was constructed by 1951 and previous site records indicated as early as 1938.

In October 2012, Yolo County, through the Central Valley Flood Protection Board (CVFPB), initiated the process of forming a Maintenance Area. The Maintenance Area was not formed due to the initial cost of completing the deferred maintenance required for the formation of a Maintenance Area was prohibitive to Yolo County and local landowners.

## **Notice of Intent to Adopt a Mitigated Negative Declaration Huff's Corner Levee Raise and Channel Reconfiguration Project**

In early 2018, Yolo County initiated engineering recommendations to determine what would be required to catch up on the deferred maintenance.

In addition to the deferred maintenance, two major improvement projects were identified: (1) a raise of the entire reach of levee to restore it to original design height; and (2) a channel reconfiguration to control erosion and remove excess sedimentation. These components are collectively referred to as the Huff's Corner Levee Raise and Channel Reconfiguration Project (Project).

Yolo County is the Lead Agency for this Project as defined by the CEQA, and the California Department of Water Resources (DWR) is a Responsible Agency as also defined by CEQA. Yolo County determined that the appropriate CEQA disclosure documentation for the Project is an Initial Study/Mitigated Negative Declaration.

### Project Description

The Project was developed by Yolo County and is funded through a cost-share grant administered by the DWR via their Flood System Repair Program (FSRP) – Contract Number 460013693. While the majority of costs to design and construct the Project are funded by FSRP, Yolo County provides a significant share of costs in the form of direct expenditures and in-kind services with multiple Yolo County Staff.

There are two distinct components of this Project. The first is the levee “raise,” which is more accurately described as a restoration action to return the levee to the original design height. The second component is the Cache Creek channel reconfiguration. Both components are fully analyzed and discussed in greater detail in this IS/MND.

### Levee Restoration

USACE Periodic Inspection Reports identify the entire 2,700-foot reach as being “freeboard deficient” (i.e., below the design height). The Project will raise the entire reach approximately 4.0 to 6.0 feet to meet the 1957 design profile, which includes 3-feet of freeboard (i.e., levee that is not under water during a particular water level to which it is designed). County Road 18 is located on the levee crown over the western 1,100-feet of the proposed levee raise; the Project includes removal and replacement of the affected section of County Road 18.

To accomplish this required elevation, the design includes widening the base of the levee on the land side by approximately 12 to 15 feet and will include a revised Operations & Maintenance (O&M) Easement corridor extending an additional 15 feet beyond the new land side toe of the levee.

Furthermore, the portion of the levee that extends northward from the hairpin turn of County Road 18 to I-5 will be completely degraded down to level earth and a new levee will be built in the same location.

### Channel Reconfiguration

The right bank of Cache Creek at Huff's Corner has approximately 100 linear feet of near-vertical bank, 30 to 50 feet high, which is undercut into the levee slope. The Project will repair this erosion site and is designed to address the root cause of the problem, namely an abrupt, near 90-degree bend of Cache Creek at the site of the worst erosion, before reaching the I-5 bridge. Significant point bar deposition has occurred on the inside edge of the bend opposite the eroded scarp. A vegetated island is also in the channel at this location.

The point bar and mid-channel island both have the effect of constraining the river flow, thereby increasing erosive potential, and pushing that highly erosive flow up against the eroding scarp and threatening to erode a bank stabilization project implemented in 2009. The Project will address these issues with a three-pronged approach.

**Notice of Intent to Adopt a Mitigated Negative Declaration  
Huff's Corner Levee Raise and Channel Reconfiguration Project**

First, sediment will be removed and off-hauled from the left-side secondary channel. Second, some of the vegetation currently stabilizing the mid-channel island will be removed. Finally, a sacrificial terrace will be constructed along the right bank which will serve to reduce flow velocity against the bank and direct flow more towards the center of the channel.

*Project Details*

Both components of this Project will be constructed concurrently in 2022. The Project may also initiate some pre-construction activities such as tree removal, vegetation removal, general site preparation, and utility relocations in advance of major construction with proper approvals and permissions in place.

Mitigation to address potential impacts to aesthetics, biological resources, cultural resources, tribal cultural resources, and mandatory findings of significance are proposed to reduce project-related environmental impacts to less-than-significant levels.

The parcels within the Project area are not listed on the Hazardous Waste and Substances Sites List as set forth in Government Code Section 65962.5.

**PUBLIC REVIEW PERIOD:**

A 30-day public review period of the IS/MND will commence on Wednesday, May 12, 2021, and end on Thursday, June 10, 2021, at 5:00 pm. During this time, public agencies and interested individuals may submit written comments on the document. Any written comments on the IS/MND must be received by the point of contact listed below within the public review period.

**AVAILABILITY OF DOCUMENTS:**

The IS/MND is available for public review at the following locations during normal business hours:

Yolo County Administrator's Office, 625 Court Street, Room 202, Woodland, CA 95695  
Yolo County Department of Community Services, 292 W. Beamer Street, Woodland, CA 95695

Please note that County offices may have modified public hours in response to the COVID-19 pandemic. It is recommended to verify hours by calling (530) 666-8150 (County Administrator) or (530) 666-8775 (Community Services).

The IS/MND is also posted to [www.yolonaturalresources.org](http://www.yolonaturalresources.org) for electronic access.

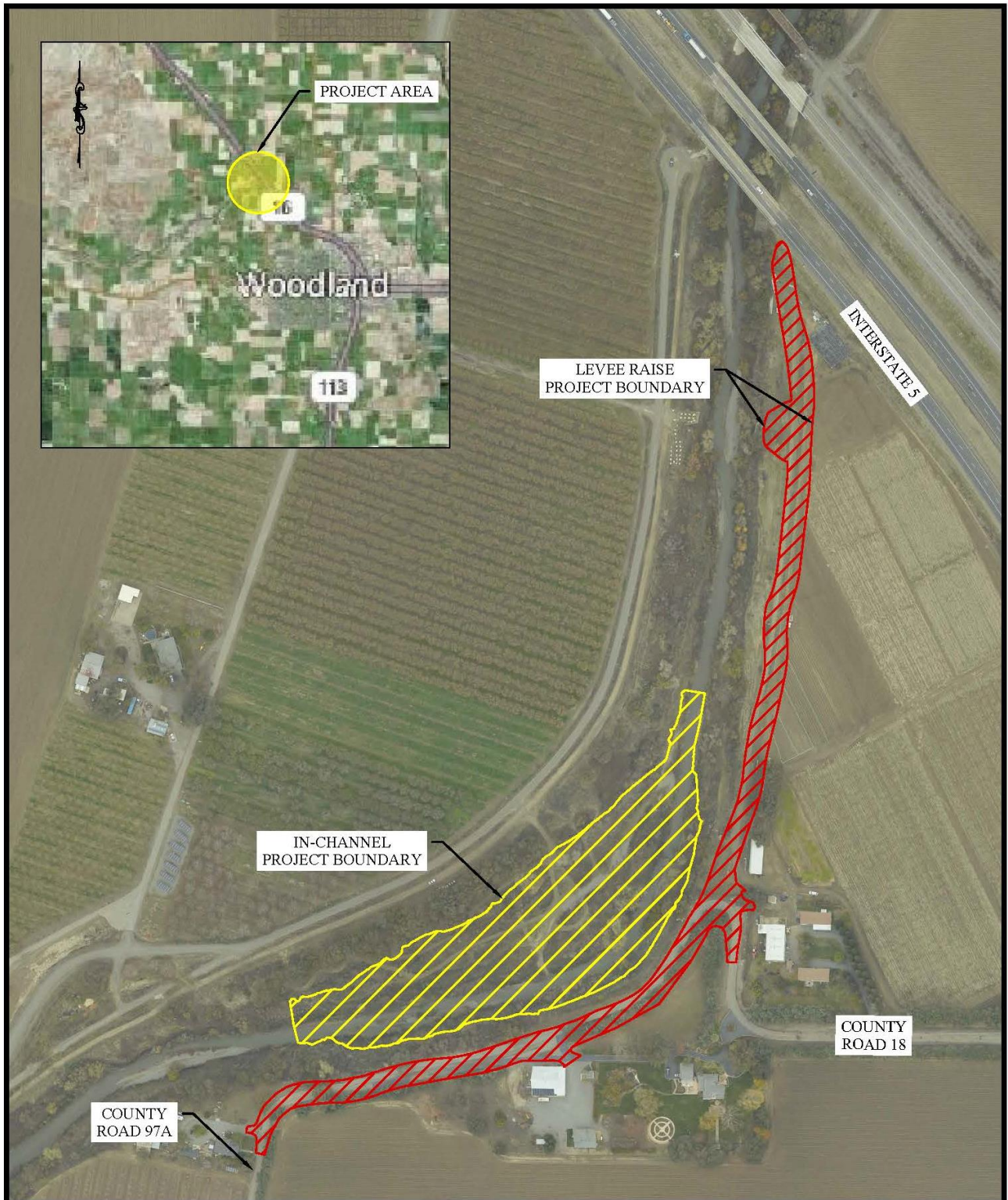
Please direct all questions about the IS/MND, as well as comments on the document to:

Casey Liebler, Natural Resources Program Coordinator  
Yolo County Administrator's Office  
625 Court Street, Room 202  
Woodland, CA 95695  
(530) 666-8236  
[Casey.Liebler@yolocounty.org](mailto:Casey.Liebler@yolocounty.org)

**ATTACHMENTS:**

Figure - Overall Project Plan View

Notice of Intent to Adopt a Mitigated Negative Declaration  
 Huff's Corner Levee Raise and Channel Reconfiguration Project



**MBK**  
**ENGINEERS**  
 455 University Avenue, Suite 100  
 Sacramento, California 95825  
 Phone: (916) 456-4400 • Fax: (916) 456-0253

**HUFF'S CORNER LEVEE RAISE &  
 CHANNEL RECONFIGURATION PROJECT**

**FIGURE 2-1 - PLAN VIEW  
 OVERALL PROJECT**

SCALE:	1" = 300'
JOB NUMBER:	5327-5.3.1
DRAWN BY:	MC
DATE:	4/26/2021
SHEET:	N/A