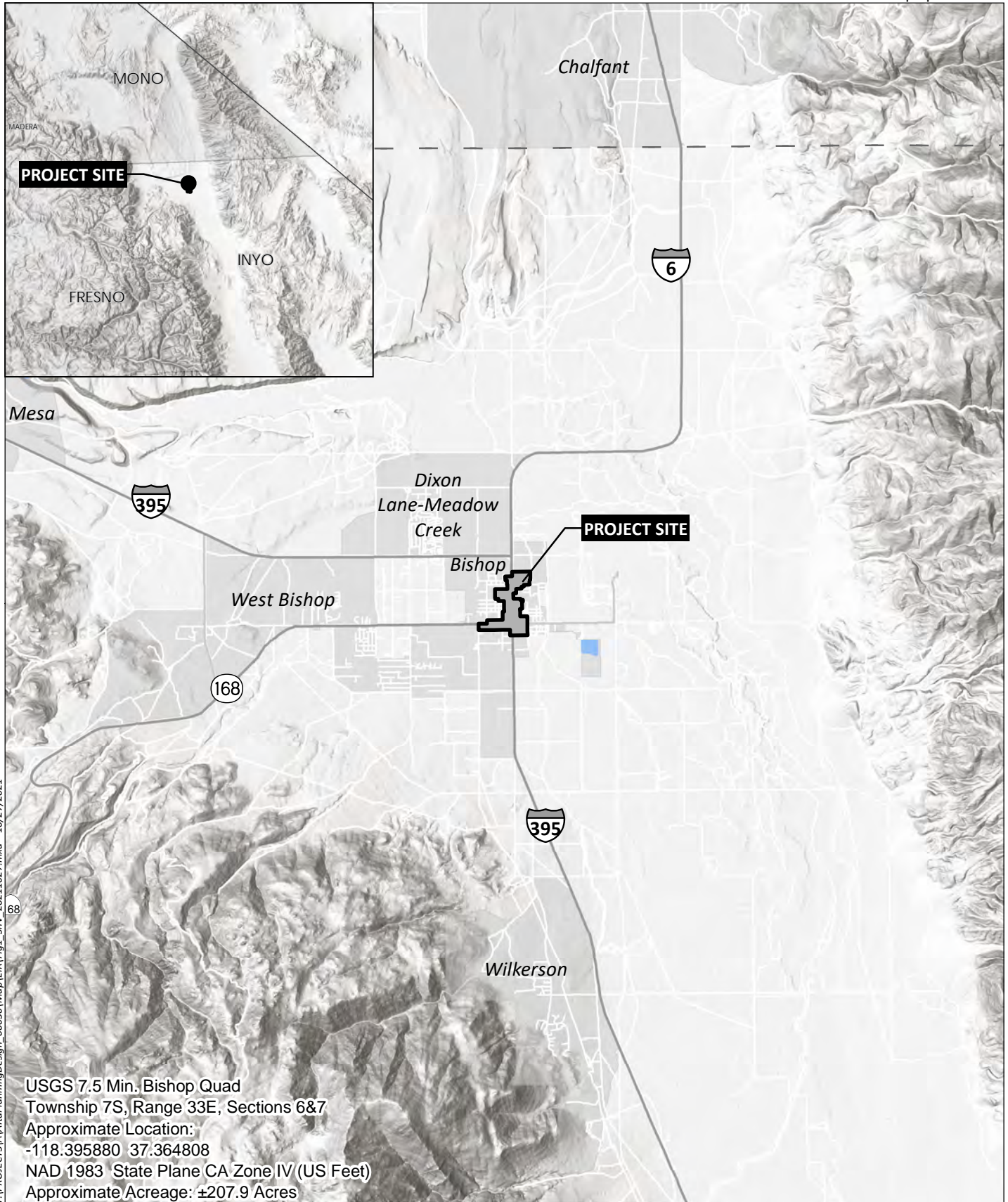


Appendix A

Figures

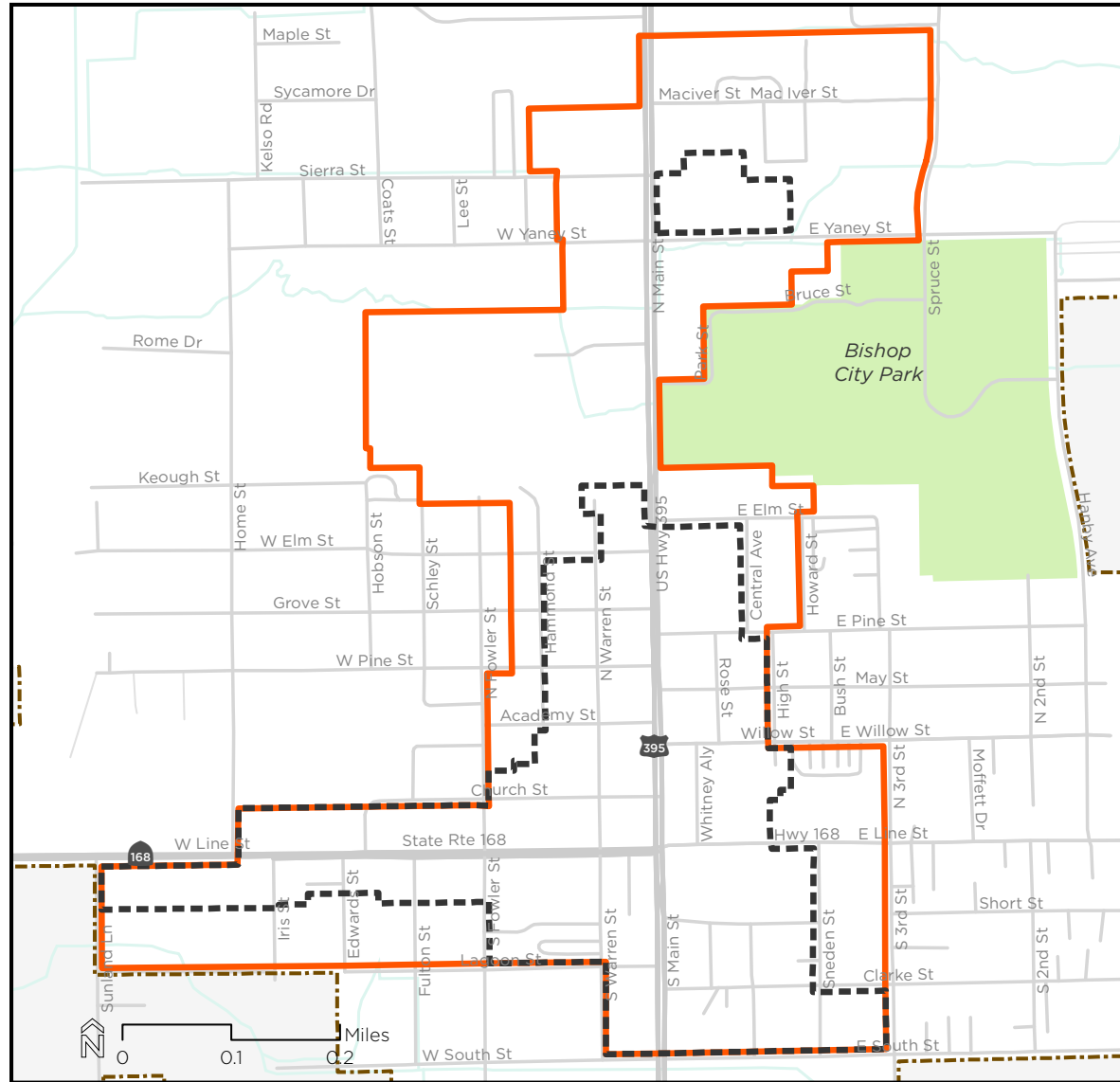







T:\PROJECTS\A\A\ItaPlanningDesign_00030\Map\IR\Fig1_SnV_20211027.mxd 10/27/2021



Source: Base Map Layers (Esri, USGS, NGA, NASA)

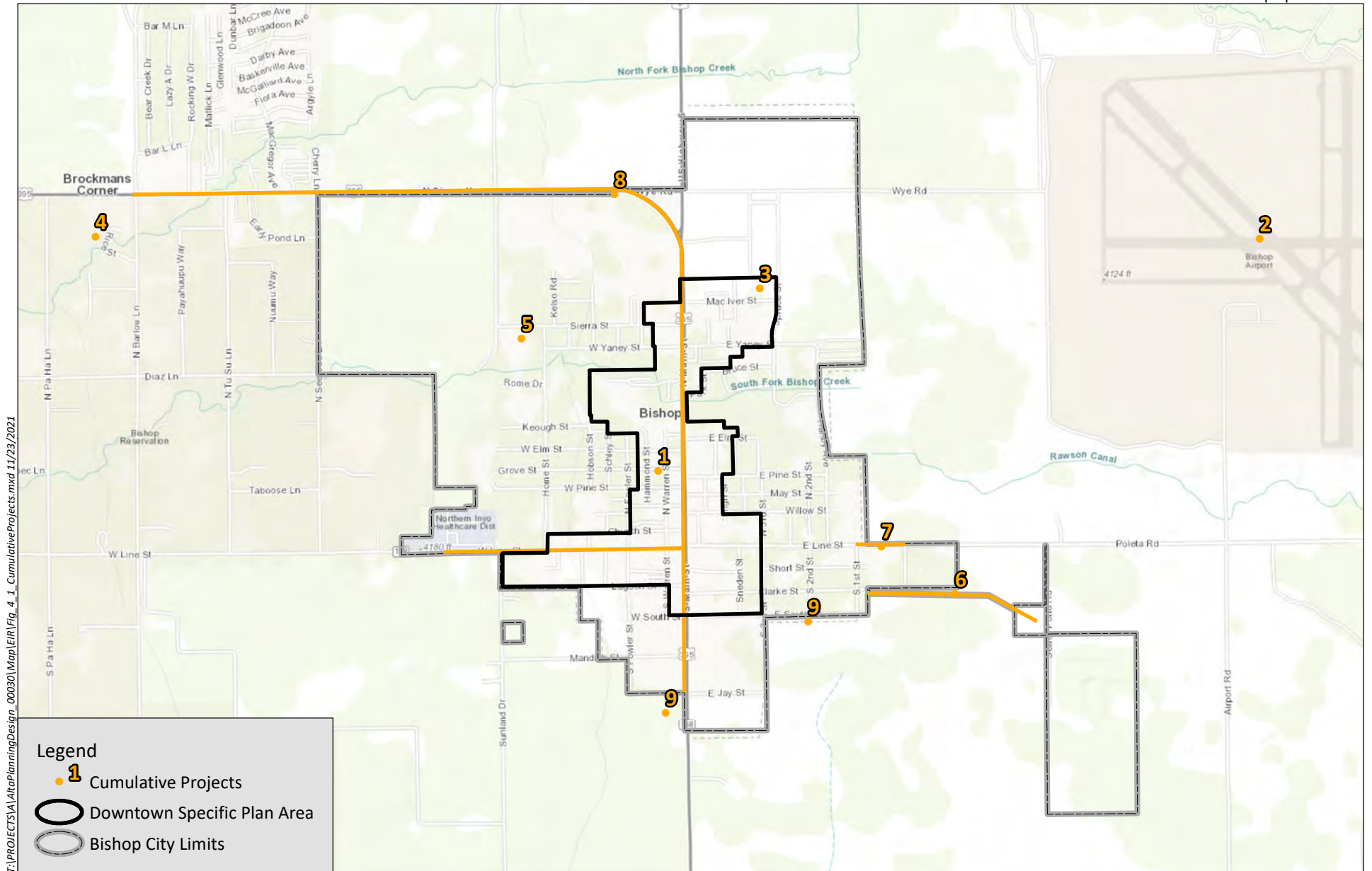
T:\PROJECTS\Alta\Planning\Design_00030\Map\ERA\Fig.2.2-1_SpecificPlan.indd



-  Mixed Use Overlay Boundary
-  Downtown Specific Plan Area
-  Park
-  Bishop City Boundary
-  Waterway

Data provided by the City of Bishop, TIGER, Caltrans

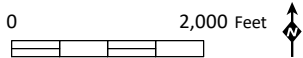
Sources: Alta Planning, 2021



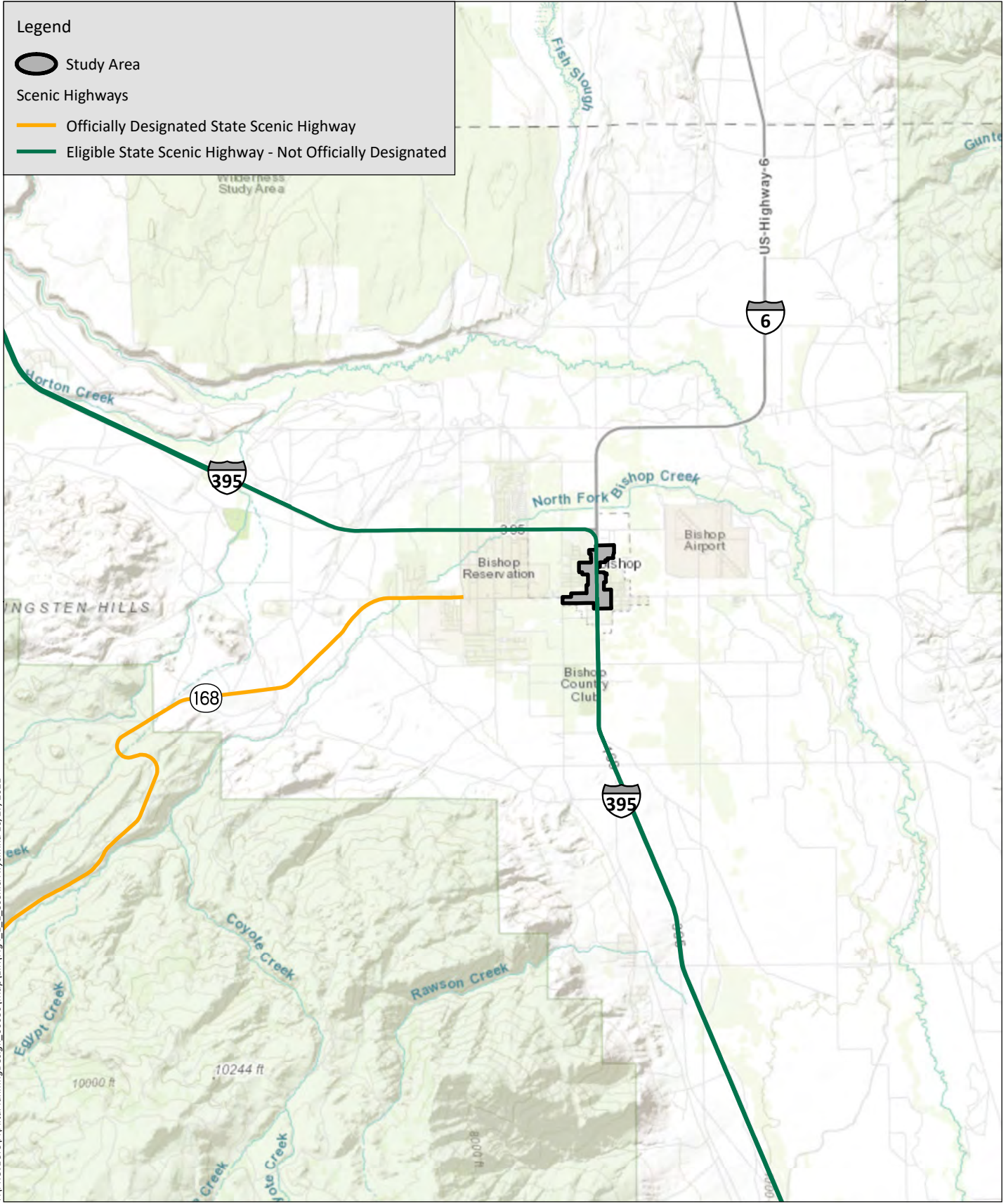
T:\PROJECTS\Alta\Planning\Design_00030\Map\EIR\Fig_4_1_CumulativeProjects.mxd 11/23/2021

Legend

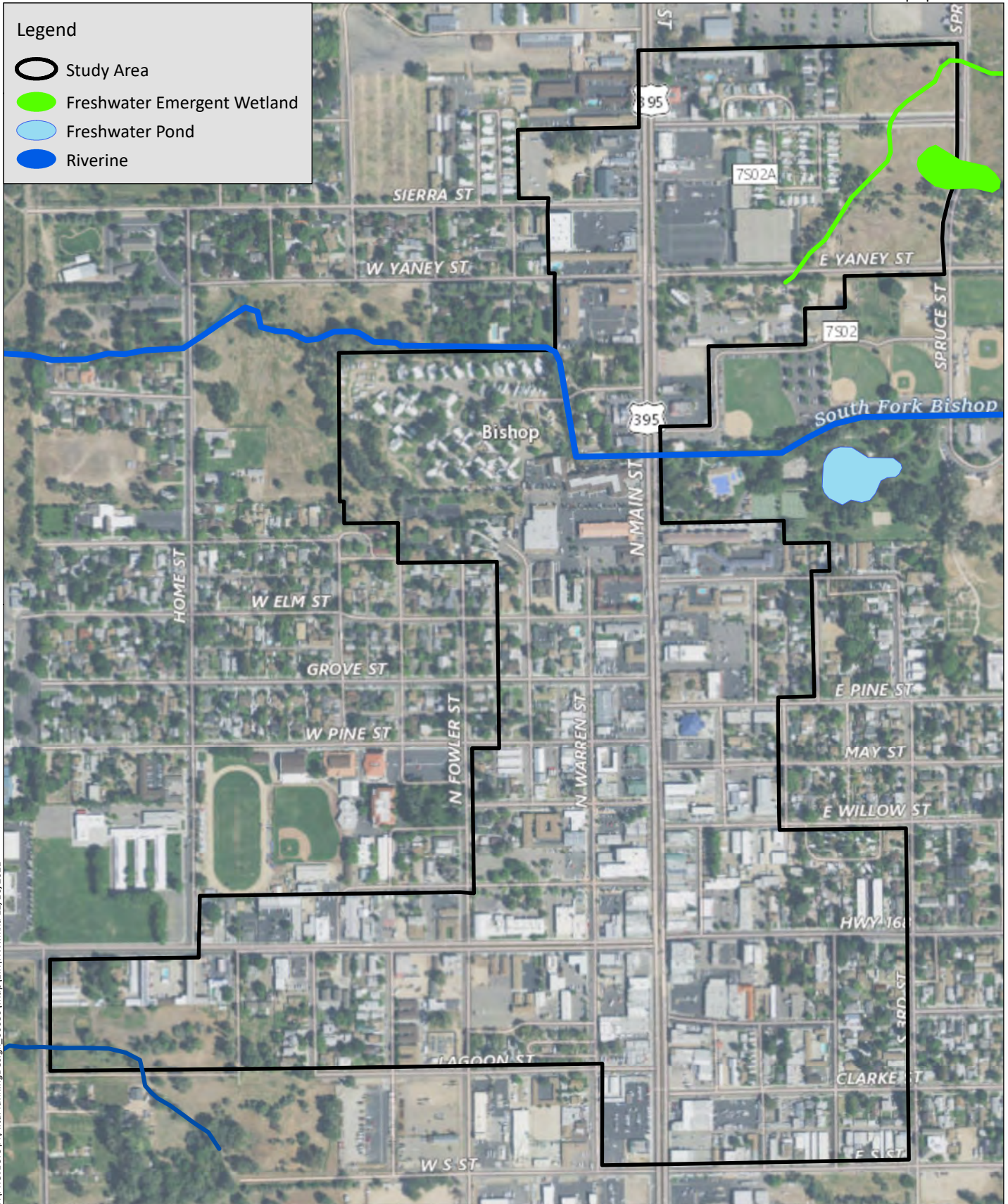
- 1 Cumulative Projects
- Downtown Specific Plan Area
- Bishop City Limits



Source: ESRI Basemaps, 2021





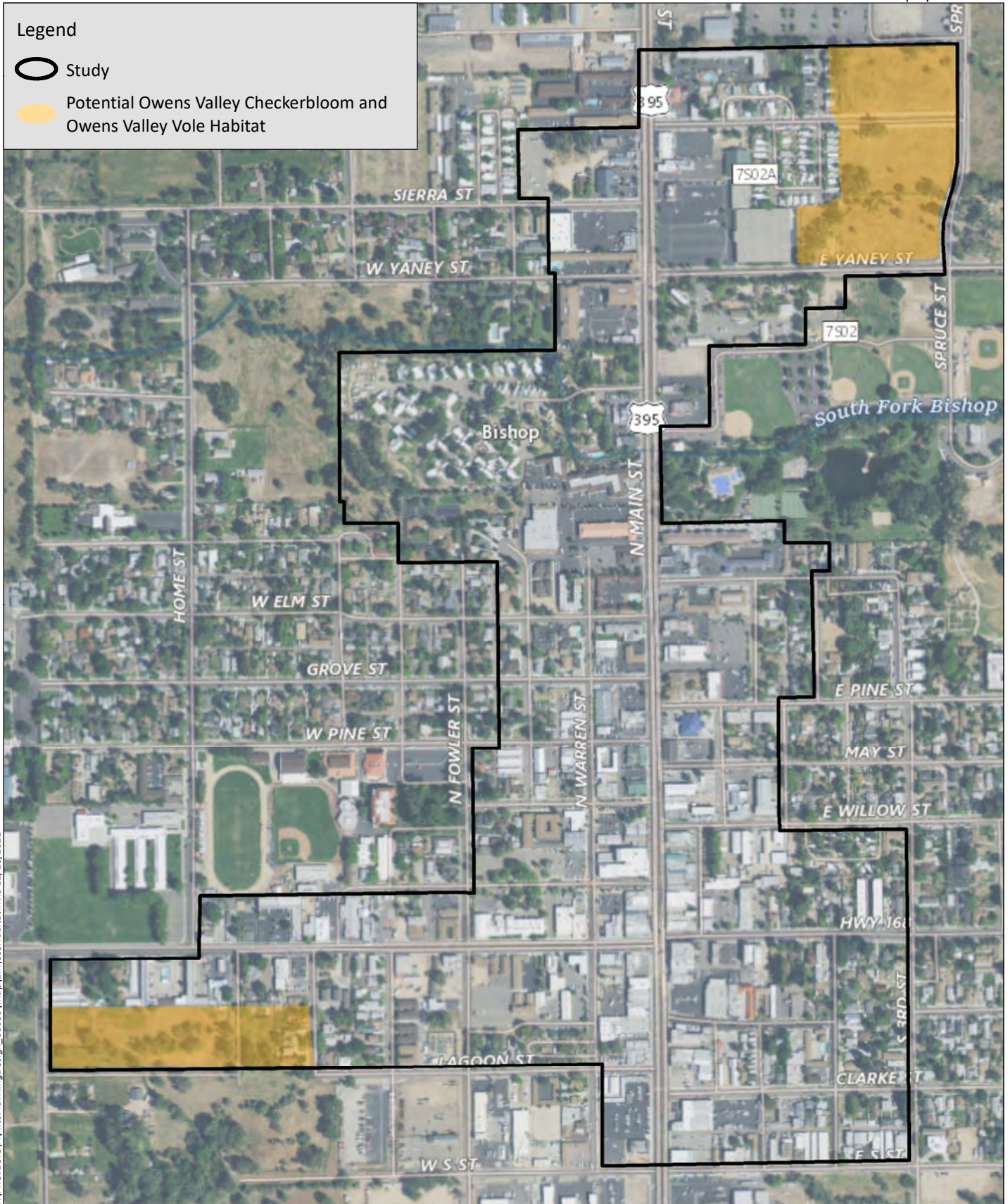
T:\PROJECTS\A\A\Map\PlanningDesign_00030\Map\LEIR\Fig4_1_1_ScenicHwys.mxd 10/27/2021



T:\PROJECTS\A\A\MapLEIR\NWLI.mxd 12/10/2021

Legend

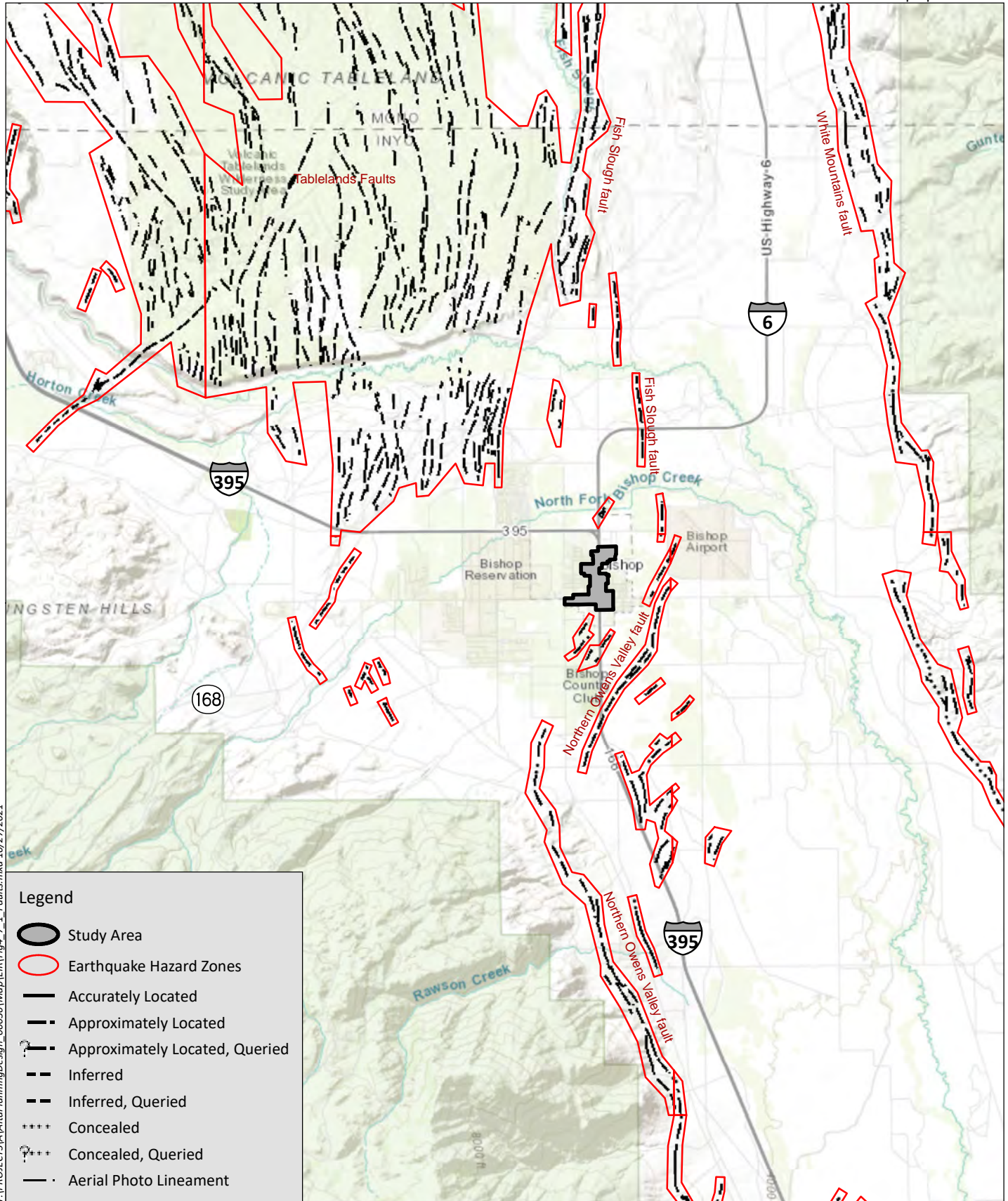
-  Study
-  Potential Owens Valley Checkerbloom and Owens Valley Vole Habitat



T:\PROJECTS\A\A\Map\LEIR\SSSHabitat.mxd 12/10/2021

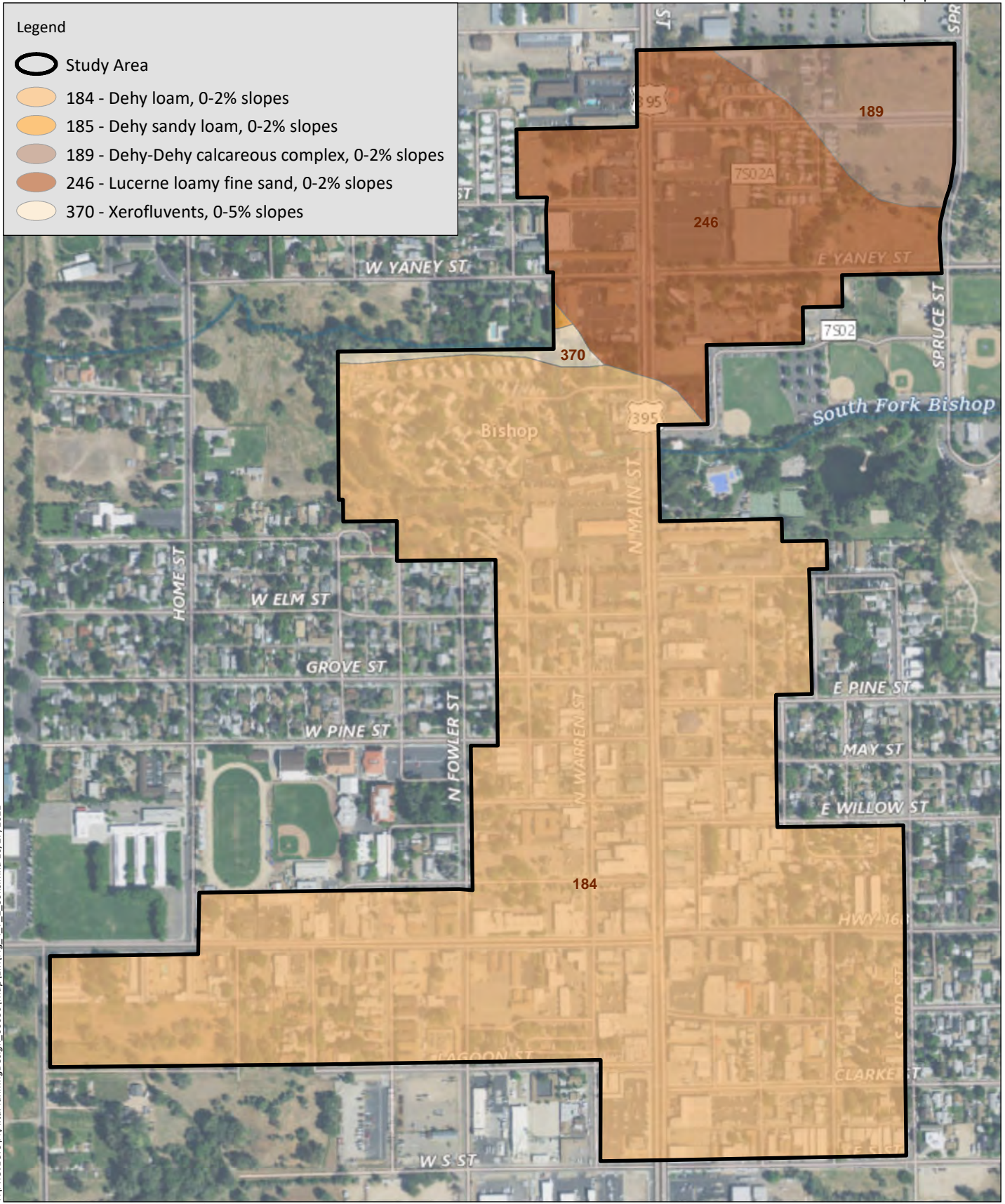


Source: USGS, 2021; Aerial (USGS, 2021)



T:\PROJECTS\A\A\ItaPlanningDesign_00030\Map\ER\Fig4_7_1_Faults.mxd 10/27/2021

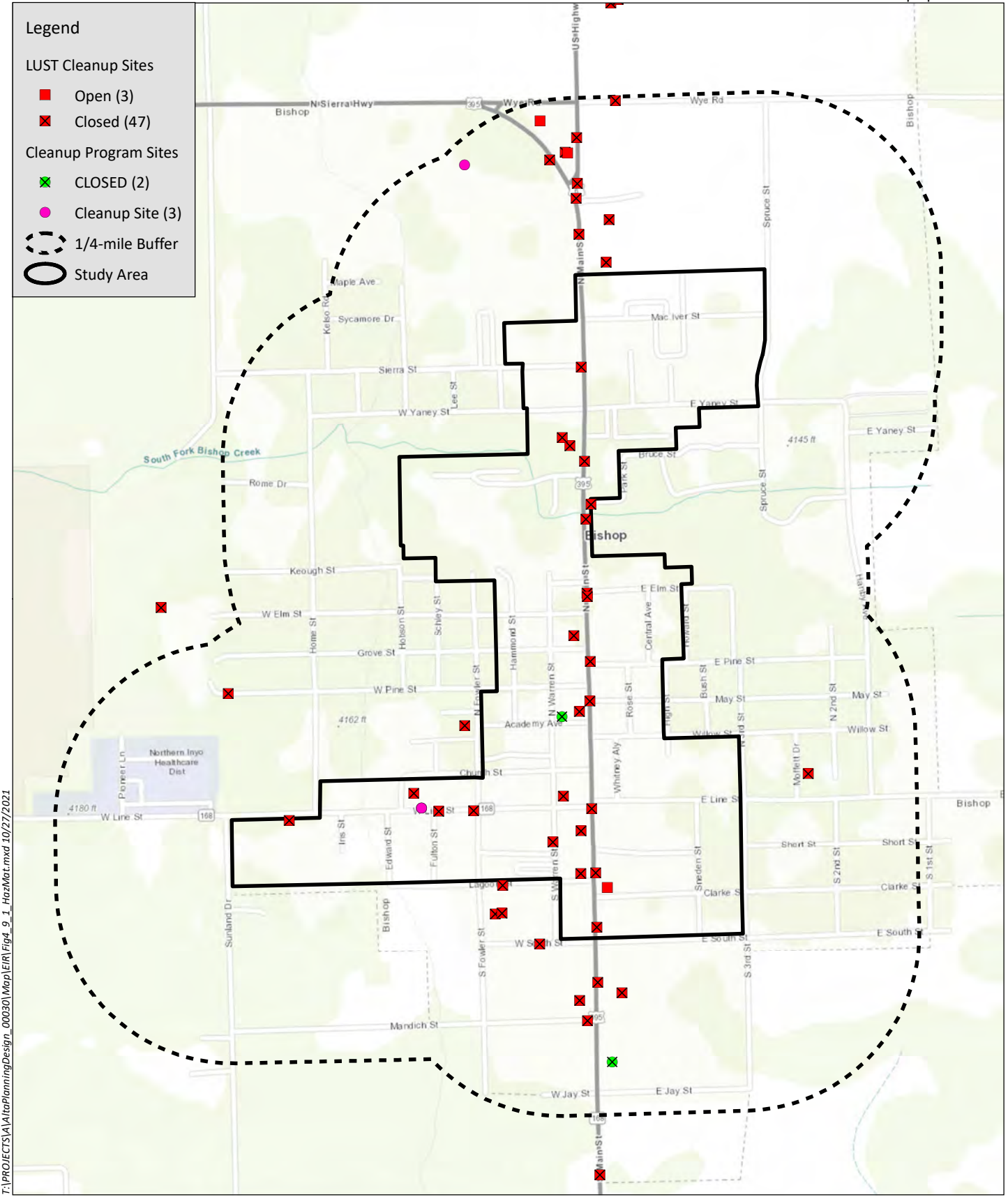
Source: CA Dept of Conservation, 2021



T:\PROJECTS\A\ItaPlanningDesign_00030\MapLEIR\Fig_4_7_2_Soils.mxd 10/27/2021

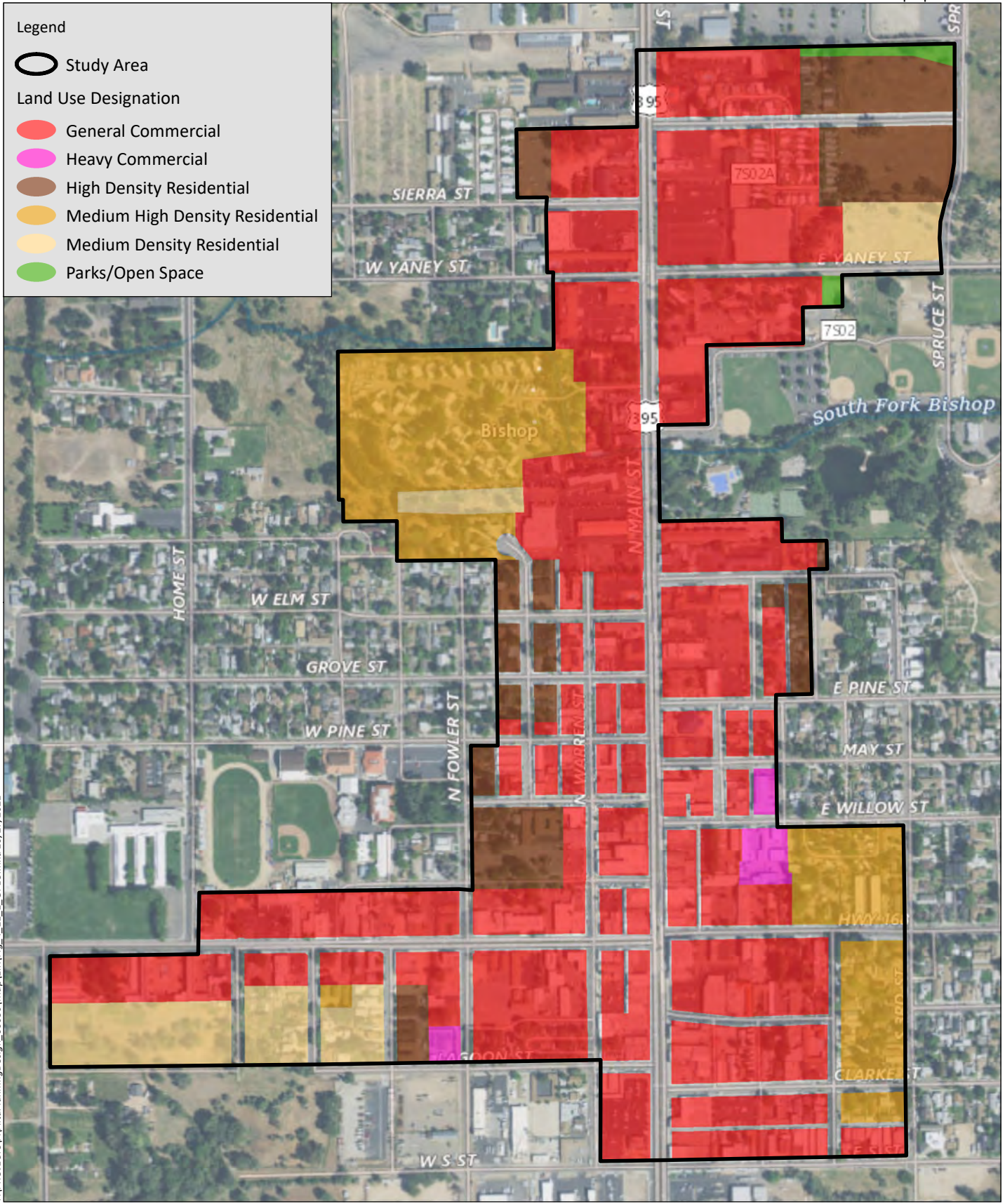
Source: NRCS, 2021; Aerial (USGS, 2021)



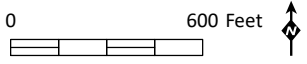


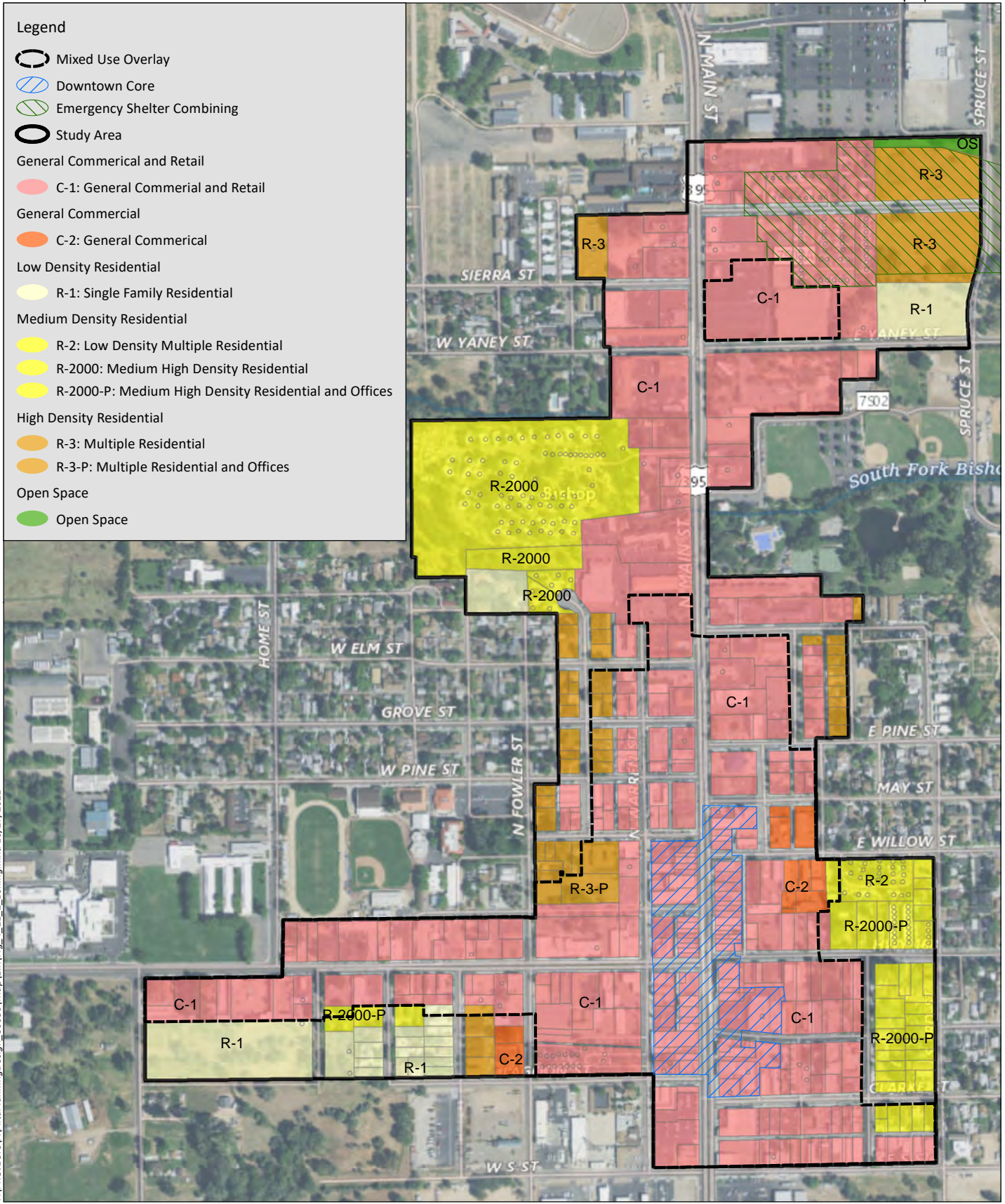
Source: CA Dept of Toxic Substances Control, CA State Water Resources Control Board, 2021





T:\PROJECTS\A\Ita\PlanningDesign_00030\Map\EIR\Fig. 4.11.1_GPLU.mxd 10/27/2021





T:\PROJECTS\A\A\ItaPlanningDesign_00030\Map\LR\Fig_4.11.2_zoning.mxd 10/27/2021

Source: City of Bishop/The Planning Center, 1994