

BPR REG. NO.	STATE	FEDERAL PROJECT NO.	FISCAL YEAR	SHEET NO.	TOTAL SHEETS
7	CALIF	E-1-805-1(74)12			
DIST.	COUNTY	ROUTE	POST MILES	SHEET NO.	TOTAL SHEETS
II	SD	805	13.5		
II	SD	94	3.7		

*R.H. Sayre*  
DISTRICT R/W ENGINEER, DISTRICT II

"N" W  
R: 800.000'  
Δ: 100° 58' 15"  
L: 1,409.819'

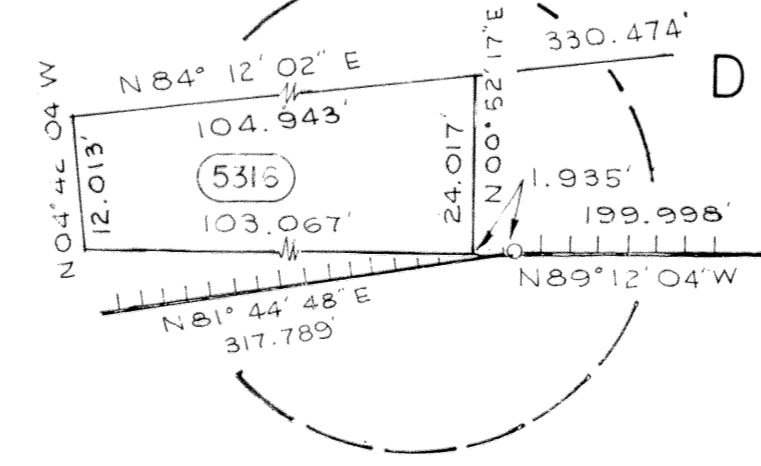
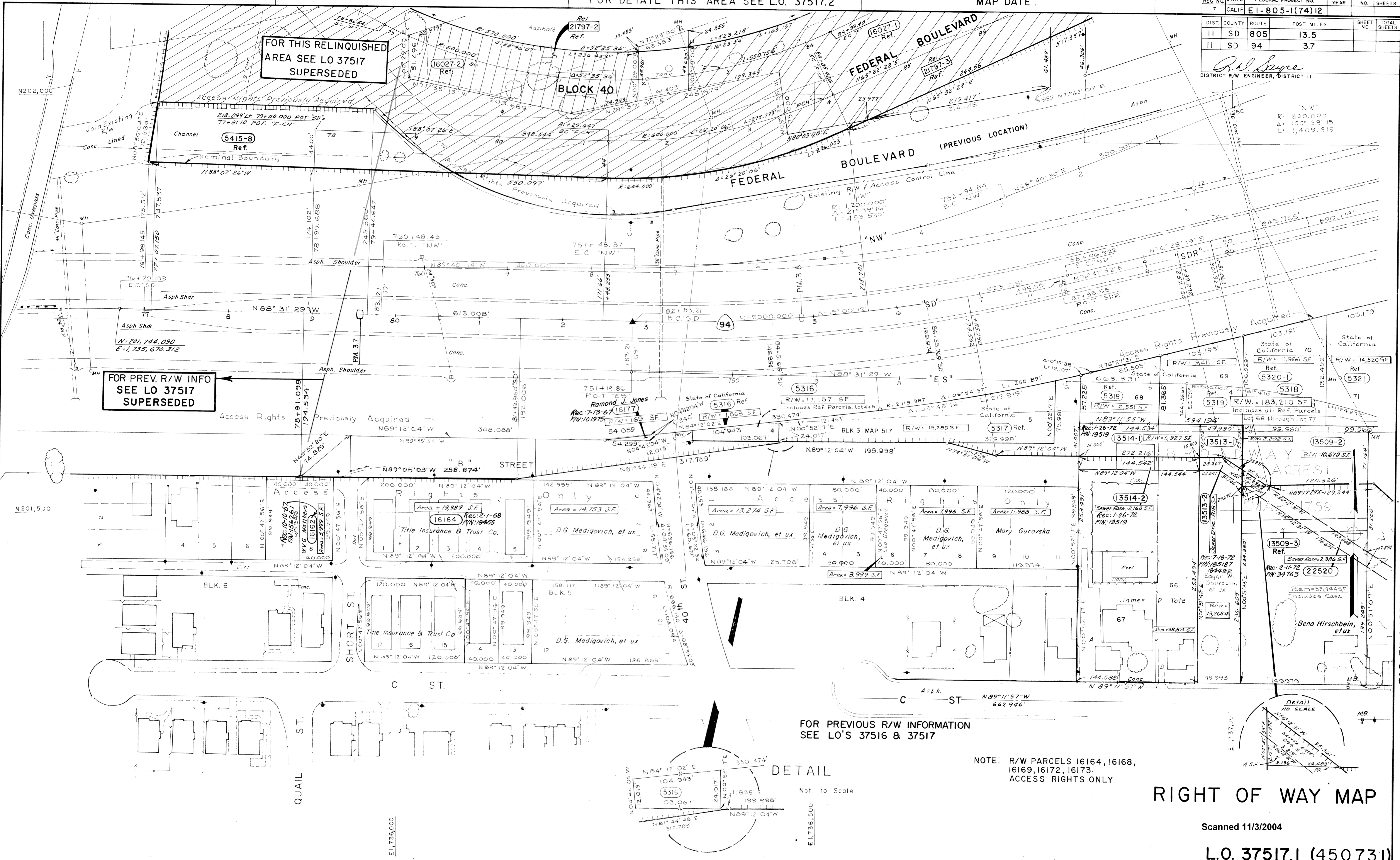
FOR THIS AREA SEE MAP 37516A

**FOR PREV. R/W INFO  
SEE LO 37517  
SUPERSEDED**

**FOR THIS RELINQUISHED  
AREA SEE LO 37517  
SUPERSEDED**

**BLOCK 40**

DATE RELEASED
3-3-67
REVISED
3-3-70 J.R.K.
8-10-70 W.F.S.
9-28-70
11-18-71



FOR PREVIOUS R/W INFORMATION  
SEE LO'S 37516 & 37517

NOTE: R/W PARCELS 16164, 16168,  
16169, 16172, 16173.  
ACCESS RIGHTS ONLY

**RIGHT OF WAY MAP**

Scanned 11/3/2004

**L.O. 37517.1 (45073.1)**

II-SD-94 - P.M. 3.7 SCALE 1" = 50'  
II-SD-805-P.M.13.5 SHEET OF

COORDINATES, BEARINGS AND DISTANCES SHOWN ARE ON THE CALIFORNIA COORDINATE SYSTEM, ZONE 6.  
MULTIPLY DISTANCES SHOWN BY 1.0000060 TO OBTAIN GROUND LEVEL DISTANCES.

FOR THIS AREA SEE L.O. 45071 II-SD-805