

**Appendix C**  
**Cultural/Paleontological Resources**  
**Assessment**

October 29, 2020

Emily Elliott  
Michael Baker International  
3536 Concours, Suite 100  
Ontario, CA 91764

Subject: Cultural/Paleontological Resources Assessment for the Bergamot Specific Plan, City of Redlands, County of San Bernardino, California.

Dear Ms. Elliot:

At the request of Michael Baker International (CLIENT), Duke Cultural Resources Management, LLC (DUKE CRM) has conducted a cultural and paleontological resources assessment for the Bergamot Specific Plan (Project), located in the City of Redlands, San Bernardino County, California (see Attachment A, Project Vicinity). The Project is subject to the California Environmental Quality Act (CEQA) and the City of Redlands (CITY) is the lead agency for CEQA.

The Project is a new development consisting of a variety of single-family residences, clustered into unique neighborhoods, integrating an abundant amount of passive and active space between 7 parcels (APN 0167-031-02, 0167-031-03, 0167-031-04, 0167-031-05, 0167-031-06, 0167-031-07, 0167-031-16). The property's land use was originally designated as an agricultural zone and had been actively farmed with citrus trees for decades. The Project is 58.07 acres in size. It is located in Section 16, Township 1 South, Range 3 West, as shown on the USGS *Redlands, Calif 7.5-minute* quadrangle map (see Attachment A, Project Location). Specifically, the Project is bounded by Domestic Avenue and Citrus Valley High School to the south, Texas Street and newer single-family residential neighborhoods to the east, vacant land and the Santa Ana River Wash to the north, and the I-210 freeway to the west (see Attachment A, Project Aerial).

On September 3, 2020, DUKE CRM requested a records search through the South Central Coastal Information Center (SCCIC). The SCCIC provided the records search results on October 12, 2020. The SCCIC is part of the California Historical Resources Information System (CHRIS) and is located at California State University, Fullerton. The records search included a review of all recorded cultural resources and reports within a quarter mile radius of the Project. In addition, we examined the California Built Environment Resources Directory (BERD), which includes the National Register of Historic Places (NRHP), California Register of Historical Resources (CRHR), California Historical Landmarks (CHL), and California Points of Historical Interest (CPHI).

According to the SCCIC, a total of 12 cultural resource reports have been completed within a ¼-mile radius of the Project; none of these included the Project boundaries. The cultural resource reports consist of 2 medium-size surveys, 2 linear highway surveys, 1 small-size survey, and 7 studies of unknown size. DUKE CRM requested two studies within the ¼-mile radius. The first is *Cultural Resource Assessment: Upper Santa Ana River Wash Land Management and Habitat Conservation Plan, San*

*Bernardino County, California*, prepared by David Brunzell and Curt Duke with LSA Associates, Inc. in 2005 (SCCIC report no. SB-04831). This report was a field study of 4,330 acres in the upper Santa Ana River Wash just north of the Project. The study identified 81 cultural resources within the project boundaries, 79 were historic and two are prehistoric. The second report is *Archaeological Survey Report State Route 210 Mixed Flow Lane Addition from Highland Avenue to San Bernardino Avenue, Cities of Highland, San Bernardino, Redlands and Portions of San Bernardino County, California*, prepared by Shelly Long with ICF International in 2014 (SCCIC report no. SB-08097). This report was a field study of a lane addition to the I-210 freeway just west of the Project, it included no recorded cultural resources within the Project boundaries

In addition to the investigative reports, two cultural resources (historic single-family residences) are recorded within ¼-mile of the Project. Both resources are recorded ¼-mile south of the Project and were demolished during construction of the Citrus Valley High School in 2003. No cultural resources are recorded within the Project boundaries.

On September 24, 2020, DUKE CRM requested a paleontological records search from the San Bernardino County Museum (SBCM). The SBCM provided the records search results on October 27, 2020. According to the SBCM, 10 fossil localities have been documented within 3 miles of the Project, but they are contained within a different formation than the Holocene alluvial deposits underlying the Project area (Attachment B). Holocene deposits are considered to have a low potential for paleontological resources.

On September 25, 2020 DUKE CRM archaeologist Edgar Alvarez conducted an intensive pedestrian field survey of the 58.07-acre Project area. Survey transects were 15 meters apart. Access to the Project was limited from the north due to an active construction site; however, the entrance on Domestic Avenue from the south was accessible. The two western parcels (APN 0167-031-16, 0167-031-02) had approximately 70 percent excellent ground visibility (~70% - 100%), 25 percent moderate ground visibility (~35% to 50%), and 5 percent low to no ground visibility (~0% - 20%). The parcel directly to the east (APN 0167-031-03) had approximately 90 – 95 percent excellent ground visibility (~70% to 100%), and 5 – 10 percent low to no ground visibility (~0% - 20%). The fourth parcel to the east (APN 0167-031-04) had approximately 80 percent excellent ground visibility (~70% - 100%), 15 percent moderate ground visibility (~35% to 50%), and 5 percent low to no ground visibility (~0% - 20%). Parcels 0167-031-05, 0167-031-06, and 0167-031-07 in the eastern end of the Project area contained an abundance of foliage and large overgrown thistle. Excellent ground visibility accounts for 10 percent (~70% - 100%), moderate ground visibility accounts for 20 percent (~35% to 50%), and low to no ground visibility accounts for 70 percent (~0% - 20%) . Digital photos were taken to document the Project area and its surroundings (Attachment C, Project Photographs).

The topography of the Project is a relatively flat slope with an approximately 2 percent grade from east to west. Sediment in the Project consists of a light gray silty loam with fine silt (<.08 mm) to fine sand (.43 - .08mm). Vegetation within the Project included citrus trees, thistle, and invasive weeds. Disturbances within the Project derive from citriculture, encampments in the northwest corner and an abundance of modern refuse throughout. No cultural resources were observed during the field survey.

DUKE CRM evaluated the proposed Project for impacts to cultural and paleontological resources according to CEQA. The Project has no previously recorded cultural resources or fossil localities within its boundaries and the field survey yielded negative results. Therefore, the Project is considered

to have low sensitivity for prehistoric and historic cultural resources and a low sensitivity for paleontological resources, and it is not likely that any cultural or paleontological resources will be impacted by the Project. DUKE CRM does not recommend any additional work for cultural or paleontological resources.

If archaeological and/or paleontological discoveries are made during construction, it is recommended that work in the immediate vicinity of the find be halted and a qualified archaeologist or paleontologist be retained to assess the nature and significance of the find and make recommendations prior to further disturbance. If the discovery is prehistoric in age, it is recommended that local Native Americans representatives be consulted. If human remains are encountered, State Health and Safety Code Section 7050.5 states that no further disturbance shall occur until the County Coroner has made a determination of origin and disposition pursuant to Public Resources Code Section 5097.98. The County Coroner must be notified of the find immediately.

Thank you for contacting DUKE CRM on this Project. If you have any questions or comments, you can contact me at (949) 356-6660, or by e-mail at [curt@dukecrm.com](mailto:curt@dukecrm.com).

Sincerely,

**DUKE CULTURAL RESOURCES MANAGEMENT, LLC**



Curt Duke, M.A., RPA  
President/Principal Archaeologist

Attachments

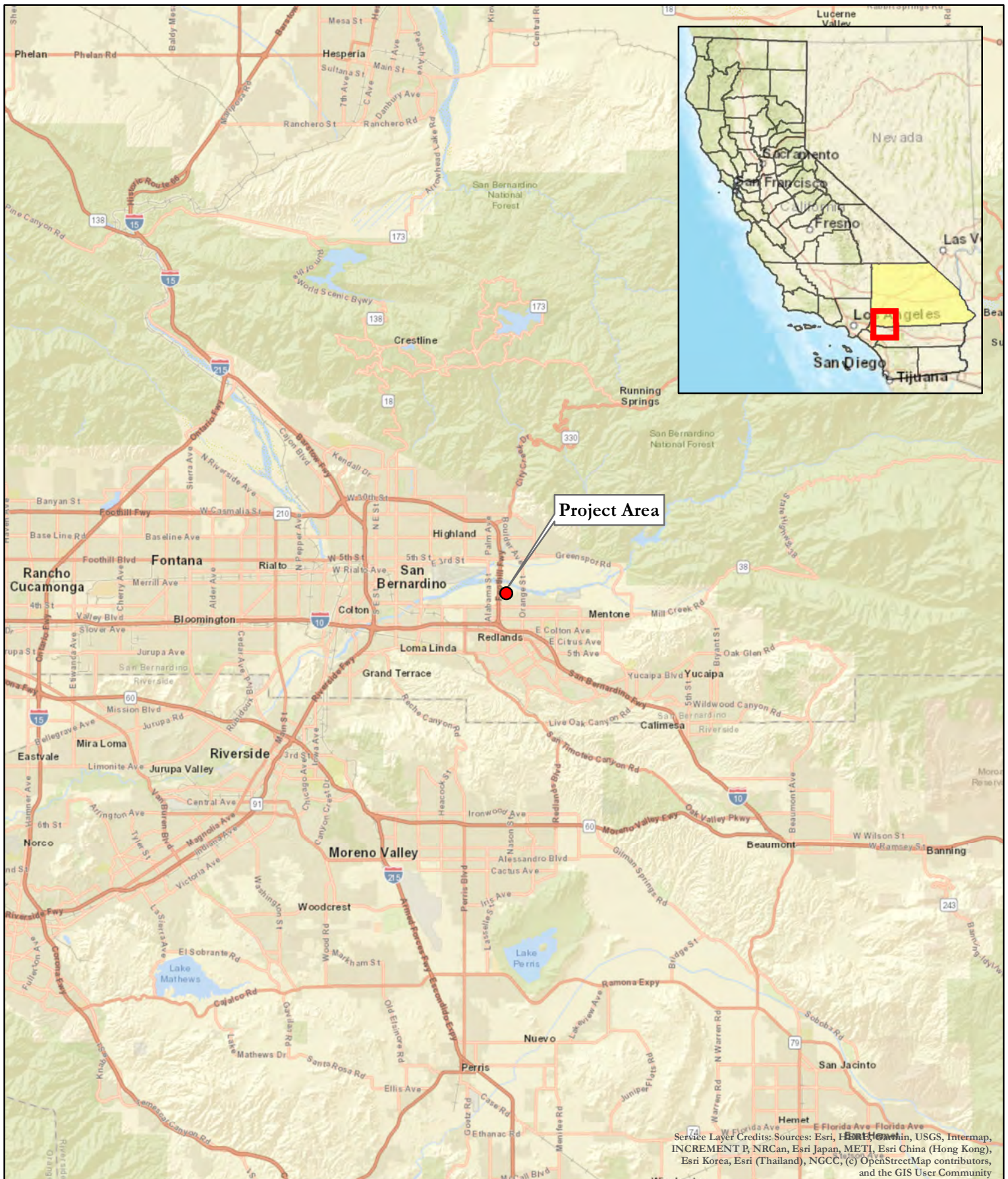
- A: Project Maps
- B: SBCM Paleontological Records Search Results
- C: Project Photographs



# **ATTACHMENT A**

## **PROJECT MAPS**



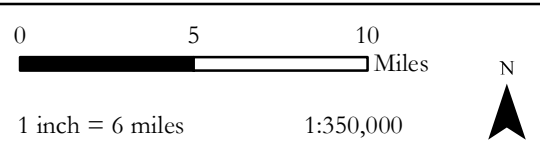


**Map 1 - Project Vicinity**

Bergamot SP, C-0335

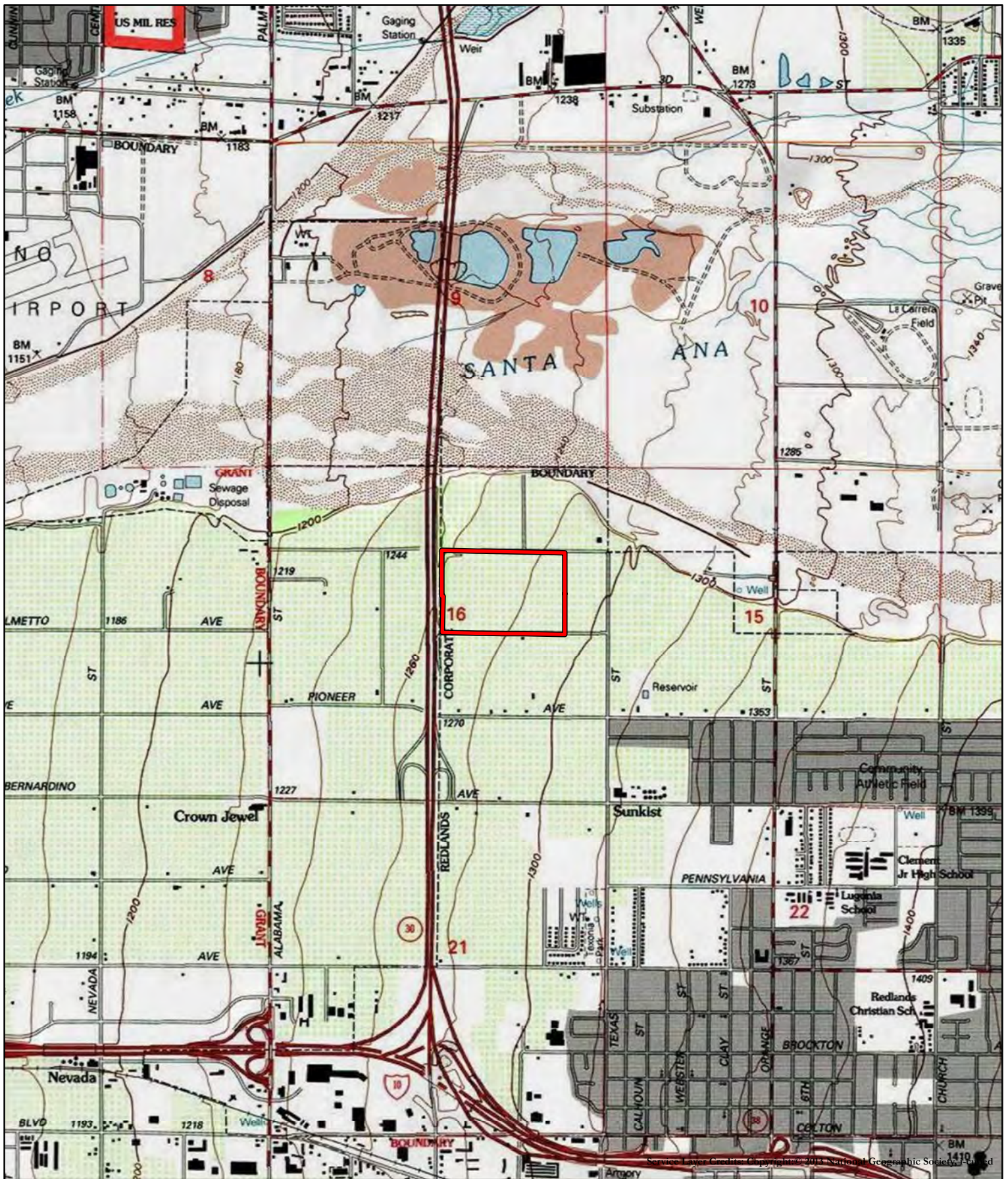


● Project Area



Service Layer Credits: Sources: Esri, Intel, DeLorme, USGS, Intermap, INCREMENT P, NRCan, Esri Japan, METI, Esri China (Hong Kong), Esri Korea, Esri (Thailand), NGCC, (c) OpenStreetMap contributors, and the GIS User Community





Map 2 - Project Location

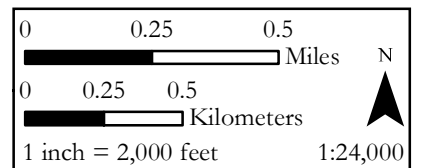
Bergamot SP, C-0335



Redlands, Calif 7.5' Quadrangle

T1S R3W Section 16

Project Area



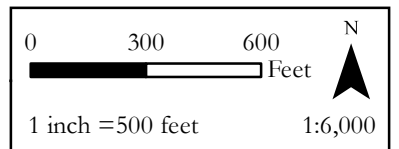




**Map 3 - Project Aerial**  
Bergamot SP, C-0335



 Project Area



**ATTACHMENT B**

**SBCM AND SCCIC  
RECORDS SEARCH RESULTS**

**South Central Coastal Information Center**

California State University, Fullerton  
Department of Anthropology MH-426  
800 North State College Boulevard  
Fullerton, CA 92834-6846  
657.278.5395 / FAX 657.278.5542  
[sccic@fullerton.edu](mailto:sccic@fullerton.edu)

*California Historical Resources Information System*  
*Orange, Los Angeles, and Ventura Counties*

10/12/2020

Records Search File No.: 21668.7824

Edgar Alvarez  
DUKECRM  
18 Technology Drive, Suite 103  
Irvine, CA 92618

Re: Record Search Results for the Citrus Valley SP / C-0335

The South Central Coastal Information Center received your records search request for the project area referenced above, located on the Redlands, CA USGS 7.5' quadrangle. Due to the COVID-19 emergency, we have implemented new records search protocols, which limits the deliverables available to you at this time. **WE ARE ONLY PROVIDING DATA THAT IS ALREADY DIGITAL AT THIS TIME.** Please see the attached document on COVID-19 Emergency Protocols for what data is available and for future instructions on how to submit a records search request during the course of this crisis. If your selections on your data request form are in conflict with this document, we reserve the right to default to emergency protocols and provide you with what we stated on this document. You may receive more than you asked for or less than you wanted. The following reflects the results of the records search for the project area and a ¼-mile radius:

As indicated on the data request form, the locations of resources and reports are provided in the following format:  custom GIS maps  shape files  hand-drawn maps

Resources within project area: 0	None
Resources within ¼-mile radius: 2	SEE ATTACHED MAP or LIST
Reports within project area: 0	None
Reports within ¼-mile radius: 12	SEE ATTACHED MAP or LIST

- Resource Database Printout (list):**  enclosed  not requested  nothing listed
- Resource Database Printout (details):**  enclosed  not requested  nothing listed
- Resource Digital Database (spreadsheet):**  enclosed  not requested  nothing listed
- Report Database Printout (list):**  enclosed  not requested  nothing listed
- Report Database Printout (details):**  enclosed  not requested  nothing listed
- Report Digital Database (spreadsheet):**  enclosed  not requested  nothing listed
- Resource Record Copies:**  enclosed  not requested  nothing listed
- Report Copies:**  enclosed  not requested  nothing listed



**OHP Built Environment Resources Directory (BERD) 2019:**  available online; please go to [https://ohp.parks.ca.gov/?page\\_id=30338](https://ohp.parks.ca.gov/?page_id=30338)

**Archaeo Determinations of Eligibility 2012:**  enclosed  not requested  nothing listed

**Los Angeles Historic-Cultural Monuments**  enclosed  not requested  nothing listed

**Historical Maps:**  not available at SCCIC; please go to <https://ngmdb.usgs.gov/topoview/viewer/#4/39.98/-100.02>

**Ethnographic Information:**  not available at SCCIC

**Historical Literature:**  not available at SCCIC

**GLO and/or Rancho Plat Maps:**  not available at SCCIC

**Caltrans Bridge Survey:**  not available at SCCIC; please go to <http://www.dot.ca.gov/hq/structur/strmaint/historic.htm>

**Shipwreck Inventory:**  not available at SCCIC; please go to [http://shipwrecks.slc.ca.gov/ShipwrecksDatabase/Shipwrecks\\_Database.asp](http://shipwrecks.slc.ca.gov/ShipwrecksDatabase/Shipwrecks_Database.asp)

**Soil Survey Maps: (see below)**  not available at SCCIC; please go to <http://websoilsurvey.nrcs.usda.gov/app/WebSoilSurvey.aspx>

Please forward a copy of any resulting reports from this project to the office as soon as possible. Due to the sensitive nature of archaeological site location data, we ask that you do not include resource location maps and resource location descriptions in your report if the report is for public distribution. If you have any questions regarding the results presented herein, please contact the office at the phone number listed above.

The provision of CHRIS Data via this records search response does not in any way constitute public disclosure of records otherwise exempt from disclosure under the California Public Records Act or any other law, including, but not limited to, records related to archeological site information maintained by or on behalf of, or in the possession of, the State of California, Department of Parks and Recreation, State Historic Preservation Officer, Office of Historic Preservation, or the State Historical Resources Commission.

Due to processing delays and other factors, not all of the historical resource reports and resource records that have been submitted to the Office of Historic Preservation are available via this records search. Additional information may be available through the federal, state, and local agencies that produced or paid for historical resource management work in the search area. Additionally, Native American tribes have historical resource information not in the CHRIS Inventory, and you should contact the California Native American Heritage Commission for information on local/regional tribal contacts.

Should you require any additional information for the above referenced project, reference the record search number listed above when making inquiries. Requests made after initial invoicing will result in the preparation of a separate invoice.

Thank you for using the [California Historical Resources Information System](#),

Isabela Kott  
GIS Technician/Staff Researcher

**San Bernardino  
County Museum  
Division of Earth  
Sciences**

**Crystal Cortez**  
Curator of Earth Sciences

email: [Crystal.cortez@sbcm.sbcounty.org](mailto:Crystal.cortez@sbcm.sbcounty.org)

13 October, 2020

Duke CRM  
Attn: Ben Scherzer  
18 Technology Dr., Ste. 103  
Irvine, CA 92618

---

**PALEONTOLOGY RECORDS REVIEW for proposed Citrus Valley SP Project , San  
Bernardino County, California**

---

Dear Ben,

The Division of Earth Sciences of the San Bernardino County Museum (SBCM) has completed a records search for the above-named project in San Bernardino County, California. The proposed Citrus Valley SP Project is located near in the City of Redlands, California as shown on the United States Geological Survey (USGS) 7.5 minute Redlands, California quadrangles.

Geologic mapping of that region indicates that the proposed development is located on Quaternary younger alluvial deposits from the San Gorgonio pass of Holocene (recent) age (Dibblee and Minch, 2003). These sediments have low potential to contain significant paleontological resources. However, these sediments may overlay older Pleistocene fan deposits. These potentially-fossiliferous sediments were deposited between ~1.8 million years ago to ~11,000 years ago. Older Pleistocene deposits in the area have been found to be highly fossiliferous yielding the remains of ground sloths, bison and horse.

For this review, I conducted a search of the Regional Paleontological Locality Inventory (RPLI) at the SBCM. The results of this search indicate that no paleontological resources have been discovered within the proposed project. However, ten (10) localities are present 3 miles south of the site (SBCM 5.3.79, 5.3.80, 5.3.81, 5.3.82, 5.3.83, 5.3.84, 5.3.85, 5.3.86, 5.3.88, and SBCM 5.3.129). Several of these sites yielded Plantae and Algae remains from the dark shale, and silty sand facies of the San Timoteo Formation (SBCM 5.3.79, 5.3.80, 5.3.81, 5.3.82, 5.3.83 and 5.3.129). Sites 5.3.84, 5.3.85 and 5.3.86 yielded fragmentary material of large mammals along

**BOARD OF SUPERVISORS**

**ROBERT A. LOVINGOOD**  
First District

**JANICE RUTHERFORD**  
Second District

**DAWN ROWE**  
Third District

**CURT HAGMAN**  
Chairman, Fourth District

**JOSIE GONZALES**  
Vice Chair, Fifth District

**Gary McBride**  
Chief Executive Officer

Citrus Valley SP Project Redlands, CA

13 October, 2020

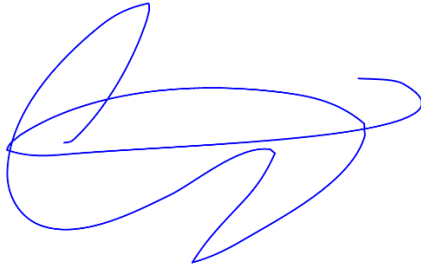
PAGE 2 of 2

with enamel of a possible proboscidean (SBCM 5.3.86). SBCM 5.3.88, recovered fossil remains of *Telesotei*, Gastropods, Plantae, and *Calamites* sp. from a silty shale deposit. In addition, 4.5 miles north of the project is another fossil locality (SBCM 1.95.5) of a Pleistocene in age sandy loam with specimens of *Tracheophyta* and *Camelops* sp.

This records search covers only the paleontological records of the San Bernardino County Museum. It is not intended to be a thorough paleontological survey of the proposed project area covering other institutional records, a literature survey, or any potential on-site survey.

Please do not hesitate to contact us with any further questions that you may have.

Sincerely,



Crystal Cortez, Curator of Earth Sciences  
Division of Earth Sciences  
San Bernardino County Museum

**BOARD OF SUPERVISORS**

**ROBERT A. LOVINGOOD**  
First District

**JANICE RUTHERFORD**  
Second District

**DAWN ROWE**  
Third District

**CURT HAGMAN**  
Chairman, Fourth District

**JOSIE GONZALES**  
Vice Chair, Fifth District

**Gary McBride**  
Chief Executive Officer





## **ATTACHMENT C**

### **PROJECT PHOTOGRAPHS**



**Figure 1:** Overview of dirt access road (left) and citrus trees from southwest corner of Project boundary, view north.



**Figure 2:** Aerial of citrus orchard from southwest corner of Project boundary, view northeast.





**Figure 3:** Overview of Texas Road from southeast corner of Project boundary, view north.



**Figure 4:** Overview of citrus orchard end from southeast corner of Project boundary, view northwest.



**Figure 5:** Overview citrus orchard from northeast corner of Project boundary, view southwest.



**Figure 6:** Aerial of citrus orchard from northeast corner of Project boundary, view southwest.





**Figure 7:** Overview of citrus orchard from northern edge of Project boundary, view south.



**Figure 8:** Aerial view of vegetation from southeast corner of Project boundary, plan view.