

LEGEND
(Locations are Approximate)


Geologic Earth Units


- Afu** - Artificial Fill, Undocumented
- Qya** - Quaternary Young Alluvium (Circled Where Buried)


Symbols

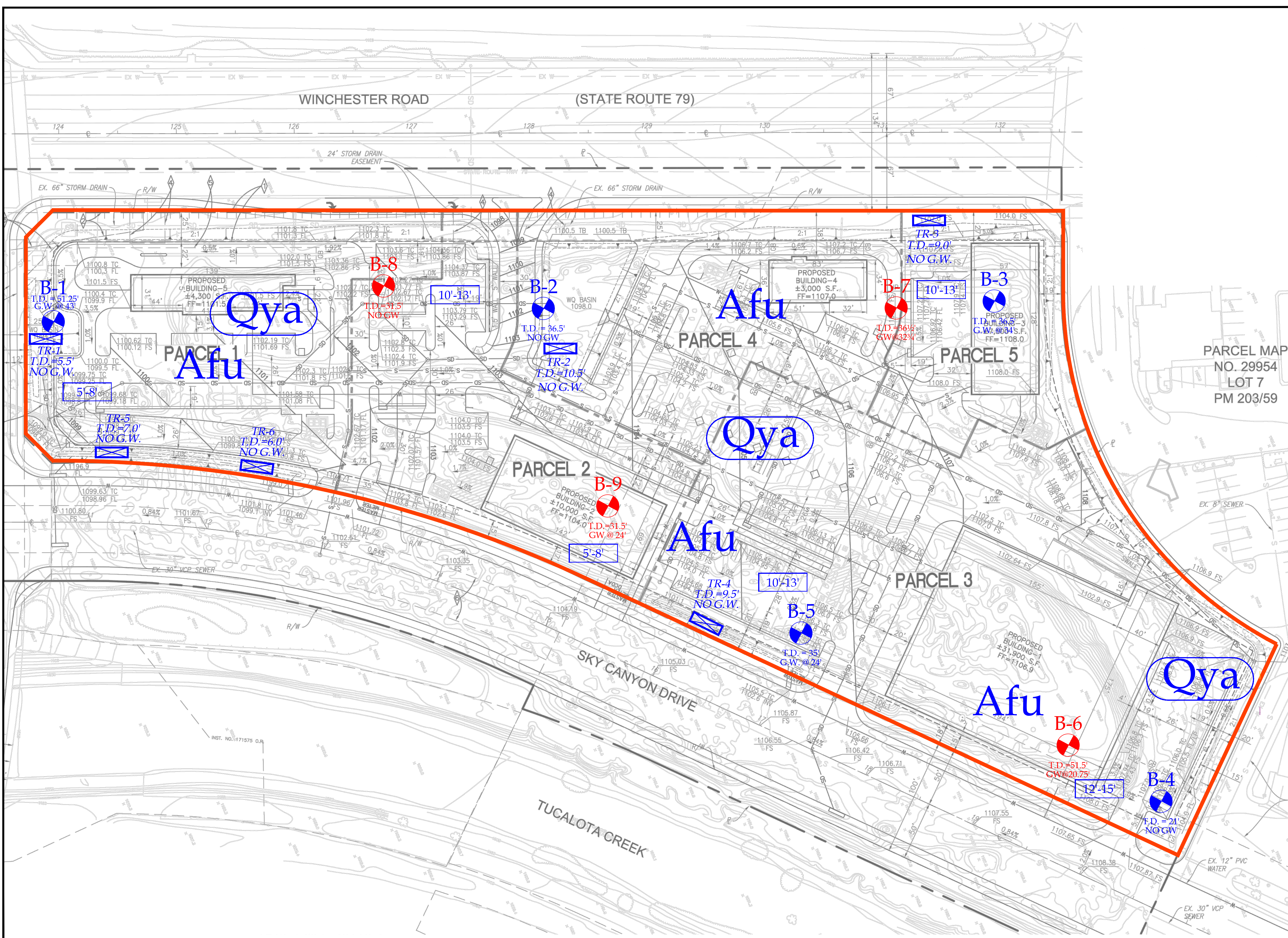
 - Limits of This Report

 12'-15' - Depths of Overexcavation

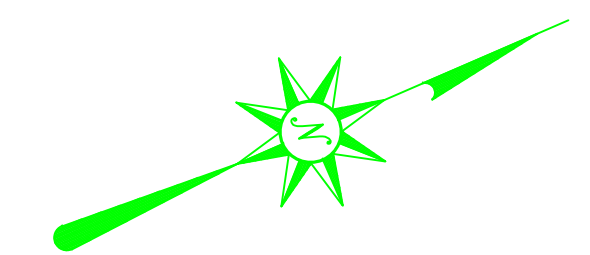
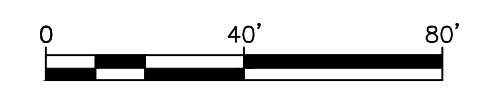
 TR-6
T.D.=6.0'
NO G.W. - Infiltration Test Trench Location

 B-5
T.D.=31.5'
NO GW - Boring Location (Drilled February 16, 2005)

 B-9
T.D.=31.5'
NO GW - Boring Location (Drilled April 22, 2008)



PARCEL MAP
NO. 29954
LOT 7
PM 203/59



LOGICAL GEOTECHNICAL CONSULTANTS
 GEOTECHNICAL • ENVIRONMENTAL • MATERIALS TESTING • SWPPP
 27570 COMMERCE CENTER DR., #128, TEMECULA, CA 92590
 PHONE: 951.297.2450 FAX: 951.719.2998
WWW.LGCGEOENV.COM

Robert L. Gregorek, II Engineering Geologist	Larry D. Cooley Project Engineer
---	-------------------------------------

GEOTECHNICAL AND INFILTRATION MAP
 APN: 920-120-034 & 920-120-035
 CITY OF TEMECULA, RIVERSIDE COUNTY, CALIFORNIA

Name:	SKY CANYON RETAIL CENTER
Project No.:	G17-1567-10
Client:	AVA PROPERTY INVESTMENT, LLC
Scale:	1" = 40'
Date:	DECEMBER 2017
Reference:	PROACTIVE ENGINEERING CONSULTANTS WEST, INC., PLOT PLAN NO. 37398 COUNTY OF RIVERSIDE, SHEET 1 OF 1
Plate No.:	1 OF 1