

- County Clerk
- Interested Parties

**COUNTY OF LAKE
NOTICE OF INTENT
TO ADOPT A MITIGATED NEGATIVE DECLARATION**

Project Title: 2000 Clover Valley Road Cannabis Cultivation; Major Use Permit (UP 20-68); Early Activation (EA 20-87); Initial Study (IS 20-83)

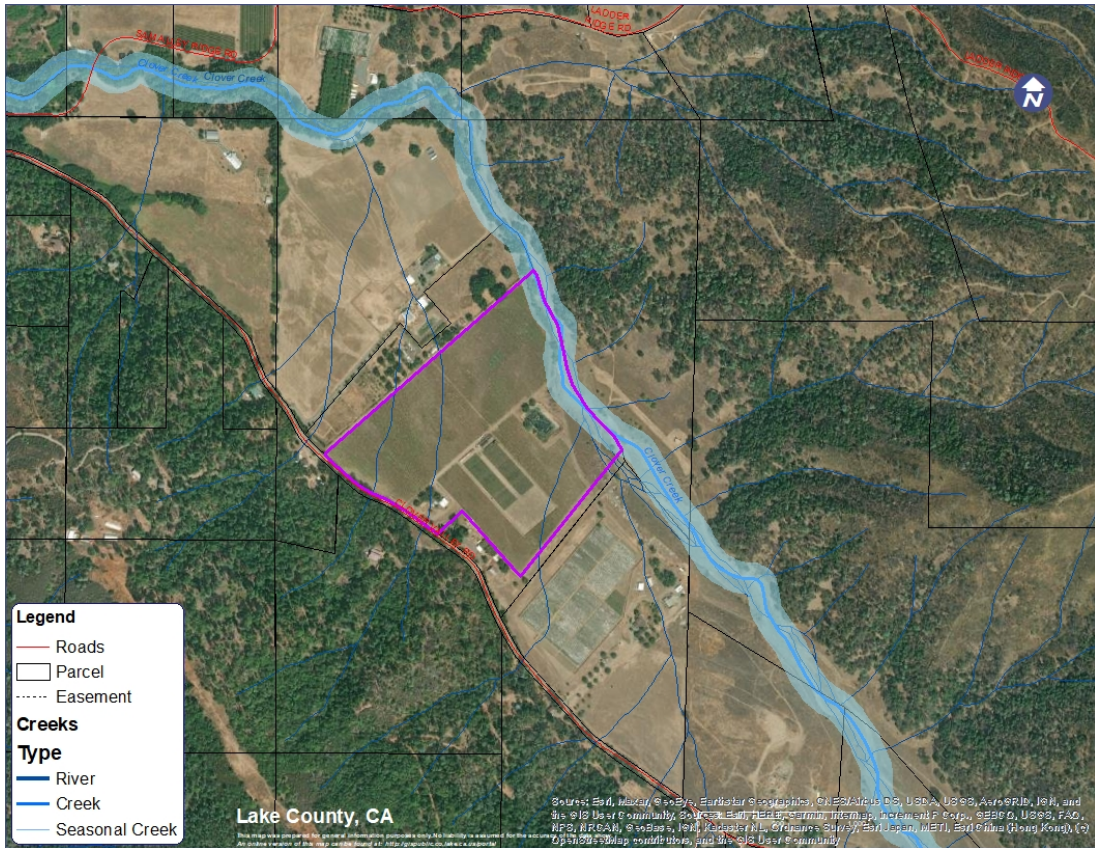
Project Location: 2000 Clover Valley Road, Upper Lake, CA 95485

APN No.: 004-007-25

Project Description:

The project will contain a total of 87,120 s.f. of commercial cannabis canopy area within the first phase and 65,560 s.f. of commercial canopy area in the last phase (phase 2), with a total of 172,800 s.f. of cultivation area at 2000 Clover Valley Road, Upper Lake, CA, APN 014-006-16. The proposed project will be completed in two phases. The first phase will consist of two acres of outdoor cultivation for one year. Phase 2 will consist of a transition to one acre of outdoor cultivation and less than one-half acre of mixed light cultivation in greenhouses. The transition to Phase 2 of the proposed project will likely occur during the summer of 2022. The cultivation area and associated ancillary facilities will be surrounded by a 270 feet x 640 feet fence to allow for expansion in Phase 2 and will be moved into greenhouse structures. The fence will be 6 feet tall, constructed with wood, and surrounded on all sides by at least 100 feet of vineyard. There will be a 30 feet wide open corridor that runs the length of the fenced area to allow fire trucks clear access and easy exit without the need for turnarounds. The proposed ancillary facilities include (12) 8 feet x 40 feet shipping containers for harvest storage, a locked shed for agricultural chemicals, outdoor drying tents, a compost area, and six 5,000-gallon water tanks, one of which will be steel or fiberglass. Additionally, an approximate 4,000 sq. ft. solar grid will be installed on top of the shipping containers to provide a supplementary electrical source for the mixed light cultivation in Phase 2 and other developments associated with cultivation activities.

The public review period for the respective proposed Mitigated Negative Declaration based on Initial Study IS 20-83 will begin on July 16, 2021, and end on August 18, 2021. You are encouraged to submit written comments regarding the proposed Mitigated Negative Declaration. You may do so by submitting written comments to the Planning Division prior to the end of the review period. Copies of the application, environmental documents, and all reference documents associated with the project are available for review through the **Community Development Department, Planning Division; telephone (707) 263-2221 and the State Clearinghouse, SCH #: _____**. Written comments may be submitted to the Planning Division or via email at sateur.ham@lakecountyca.gov.



Vicinity Map of 2000 Clover Valley Road Cannabis Cultivation