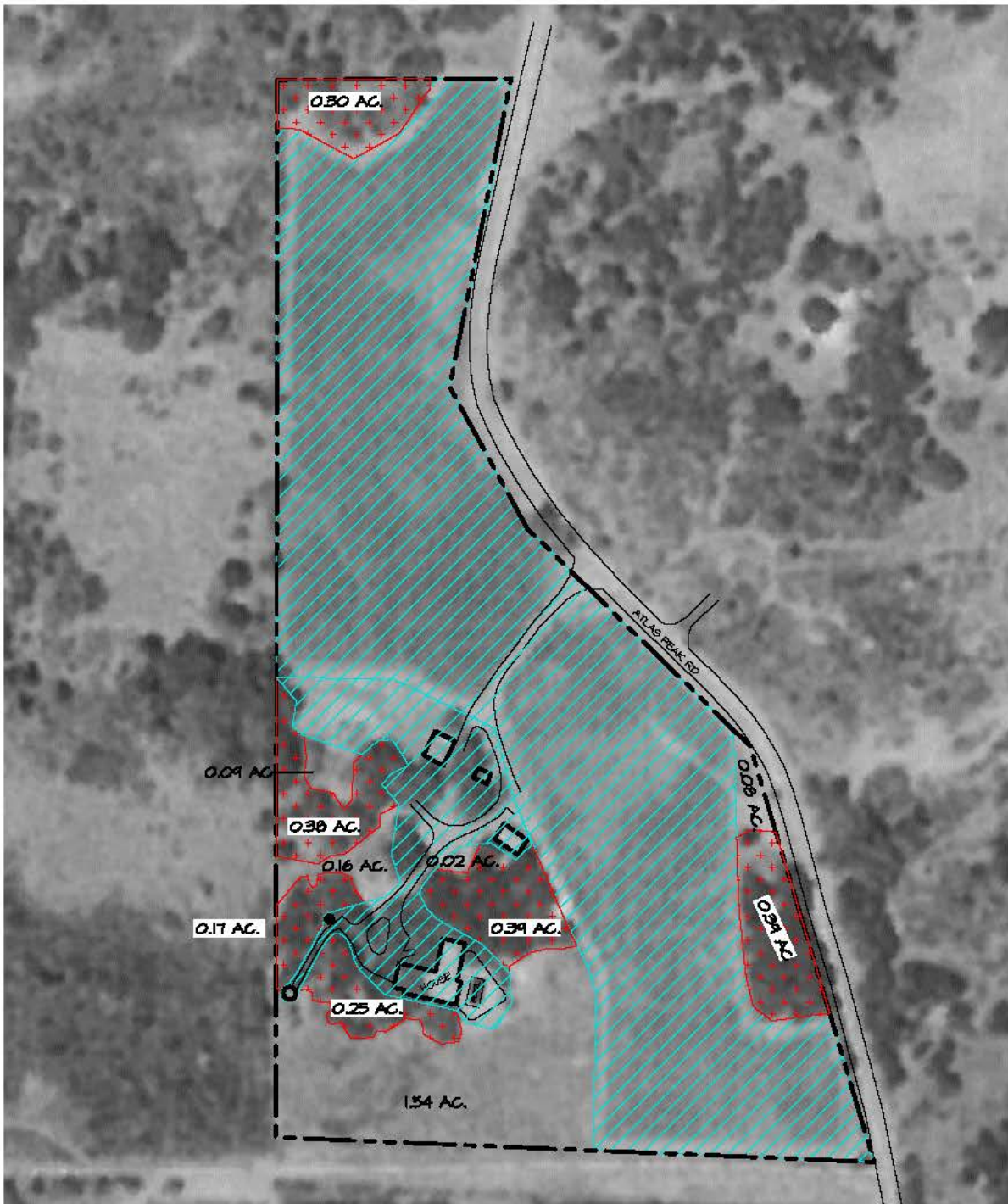


EXHIBIT A-1



SCALE: 1"=200'

1993 GOOGLE EARTH PHOTO

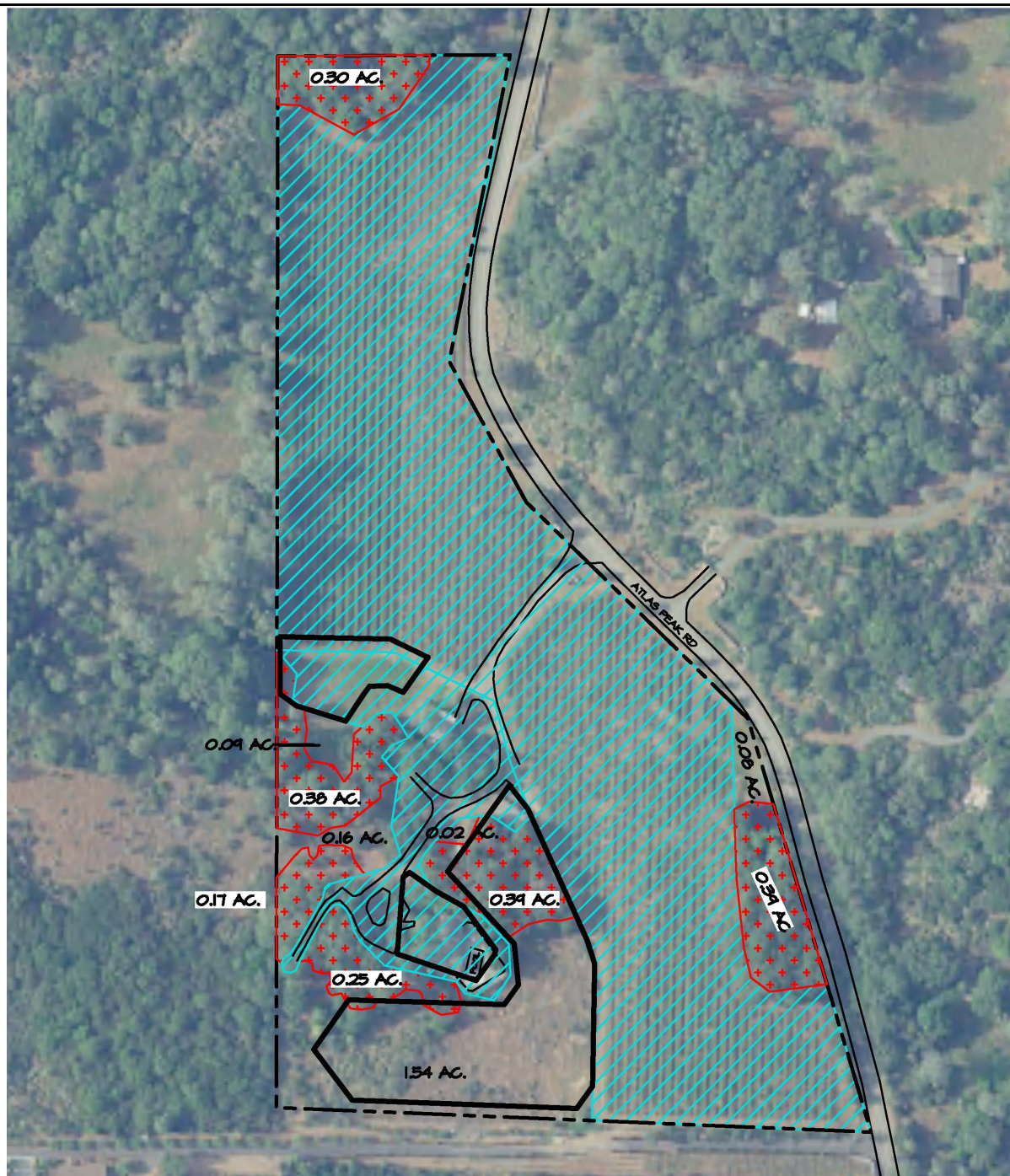
APN: 033-010-056 (13.00 ac)

1993 Brush/Grass (1.89 ac.)

 1993 Tree Canopy (1.88 ac)

 1993 Developed Area (9.23 ac.)

HARDTEN VINEYARD
3393 ATLAS PEAK RD.
APN: 033-010-056
Canopy Retention Analysis
1993 Baseline Photo
Napa Valley Vineyard Engineering
January 10, 2020

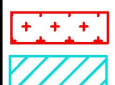


SCALE: 1"=200'

NAPA COUNTY 2016 ORTHO PHOTO

APN: 033-010-056

Acres	Allowable Removal		Proposed Removal
	%	Ac.	
1.89	60	1.13	1.12
1.88	30	0.56	0.37
9.23	100	9.23	0.54
Total		10.92	2.01



1993 Brush/Grass
 1993 Tree Canopy
 1993 Developed Area

HARDTEN VINEYARD
 3393 ATLAS PEAK RD.
 APN: 033-010-056
 Canopy Retention Analysis
 Project Overlay
 Napa Valley Vineyard Engineering
 January 10, 2020