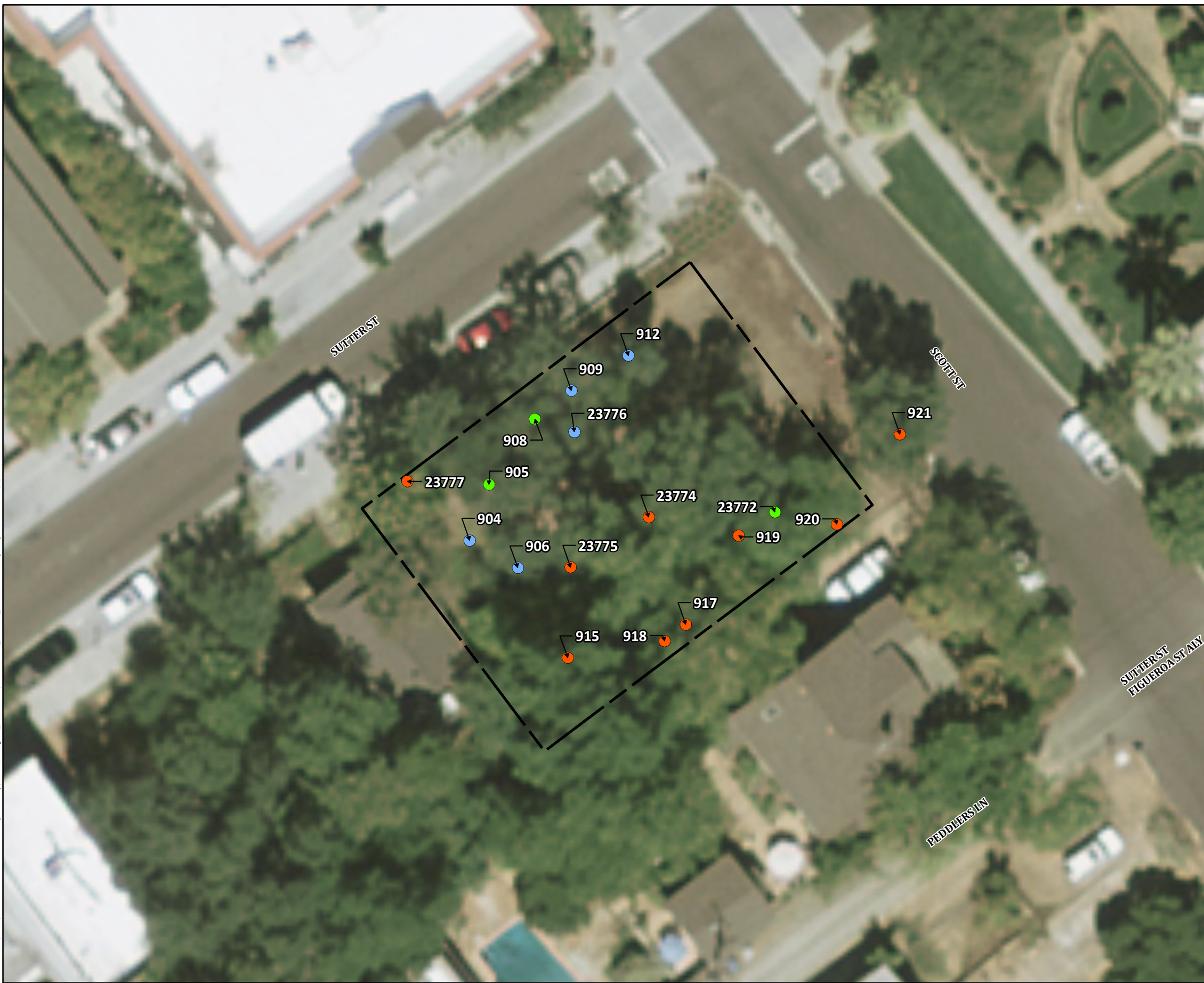

APPENDIX B

Tree Survey Data

This page intentionally
left blank.

Location: N:\2019\2019-024 603 Sutter Street (Z Global)\MAPS\Biological_Resources\SutterStreet_Arboris_20190228.mxd (CCH)-chinkelman 3/6/2019



Attachment A - Tree Inventory for 603 Sutter Street

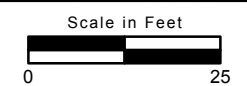
Map Features

603 Sutter Street Parcel (0.171 acres)

Tree Species

- Blue Oak
- Live Oak
- Valley Oak

Service Layer Credits: Sources: Esri, HERE, Garmin, USGS, Intermap, INCREMENT P, NRCan, Esri Japan, METI, Esri China (Hong Kong), Esri Korea, Esri (Thailand), NGCC, © OpenStreetMap contributors, and the GIS User Community



DRAFT



Attachment B -
 Tree Survey Data (February 26, 2019)
 for 603 Sutter Street

Tree #	Native/Non-native	Common Name	Species Name	DBH (inches)	# of Stems	Dripline (feet)	Condition
904	Native	Blue Oak	<i>Quercus douglassii</i>	9.5	0	15	3
905	Native	Interior Live Oak	<i>Quercus wislizenii</i>	9.5	2	23	3
906	Native	Blue Oak	<i>Quercus douglassii</i>	9	0	15	3
908	Native	Interior Live Oak	<i>Quercus wislizenii</i>	11	2	18	3
909	Native	Blue Oak	<i>Quercus douglassii</i>	12	0	24	3
912	Native	Blue Oak	<i>Quercus douglassii</i>	8	0	23	3
915	Native	Valley Oak	<i>Quercus lobata</i>	13	0	35	3
917	Native	Valley Oak	<i>Quercus lobata</i>	14.5	0	18	3
918	Native	Valley Oak	<i>Quercus lobata</i>	16.5	0	20	3
919	Native	Valley Oak	<i>Quercus lobata</i>	5.5	0	10	3
920	Native	Valley Oak	<i>Quercus lobata</i>	6.5	2	18	4
921	Native	Valley Oak	<i>Quercus lobata</i>	18	1	22	4
23772	Native	Interior Live Oak	<i>Quercus wislizenii</i>	5.5	2	9	3
23774	Native	Valley Oak	<i>Quercus lobata</i>	16	0	28	4
23775	Native	Valley Oak	<i>Quercus lobata</i>	10.5	0	25	4
23776	Native	Blue Oak	<i>Quercus douglassii</i>	12.5	2	16	3
23777	Native	Valley Oak	<i>Quercus lobata</i>	11	0	25	3