



December 1, 2017

Ms. Grace P. Brandt  
Division of Oil, Gas, and Geothermal Resources - Southern District  
5816 Corporate Avenue, Suite 200  
Cypress, California 90630-4731

Re: Leak Test Report  
Court 1300 Partners, LLC Residential Redevelopment  
1346, 1350, and 1354 West Court Street  
Los Angeles, California 90026

Dear Ms. Brandt:

Roux Associates, Inc. (Roux Associates), on behalf of Court 1300 Partners, LLC, is submitting this Leak Test Report to the Division of Oil, Gas, and Geothermal Resources (DOGGR) documenting well head leak testing performed at the reported plugged and abandoned oil well "Courtland Cty. Lights Assoc. Well No. 1" (API No. 03719064), located at 1346, 1350, and 1354 West Court Street in Los Angeles, California (Site; Figures 1 and 2).

On November 15, 2017, Roux Associates met DOGGR inspector Kathryn Honeycutt-Larios at the Site to inspect the reported exposed well head, which had been excavated at approximately 6 feet below ground surface. Although its location was consistent with DOGGR's Well Finder map, the casing appeared to be constructed of 2-inch diameter black polyvinylchloride (PVC) and no welded steel plate cover was observed. The interior of the casing was not visible due to blockage by dirt. Roux Associates utilized a RAE Systems QRAE-3 wireless 4-gas meter to measure oxygen, hydrogen sulfide, and carbon monoxide concentrations and percent lower explosive limit (LEL) at and around the exposed well head. Oxygen levels were normal (20.9 percent) and no measurable hydrogen sulfide, carbon monoxide, or percent LEL was observed.

Based on the results of the gas test, **no leaks** of hazardous gases were observed at the well head of "Courtland Cty. Lights Assoc. Well No. 1" (API No. 03719064). However, excavation of the Site will continue to a depth of approximately 20 feet bgs, and the steel casing and cover plate for "Courtland Cty. Lights Assoc. Well No. 1" (API No. 03719064) may be encountered at a deeper depth. Roux Associates will notify DOGGR for an additional inspection if/when the steel casing and plate are encountered.

## **CLOSING**

Roux Associates is available to answer any questions that DOGGR may have regarding this Leak Test Report. Please contact Mauricio H. Escobar at 310-879-4920 or via email

Ms. Grace Brandt  
December 1, 2017  
Page 2

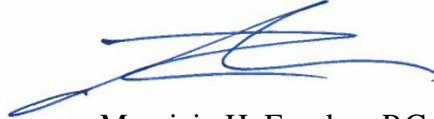
at [mescobar@rouxinc.com](mailto:mescobar@rouxinc.com); or Jo'l Chapman at 310-879-4926 or via email at [jchapman@rouxinc.com](mailto:jchapman@rouxinc.com).

Sincerely,

ROUX ASSOCIATES, INC.



Jo'l Chapman, P.G.  
Senior Geologist



Mauricio H. Escobar, P.G.  
Principal Geologist

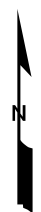
Encl.:

Figure 1: Site Vicinity

Figure 2: Site Plan



LOCATION OF DETAIL

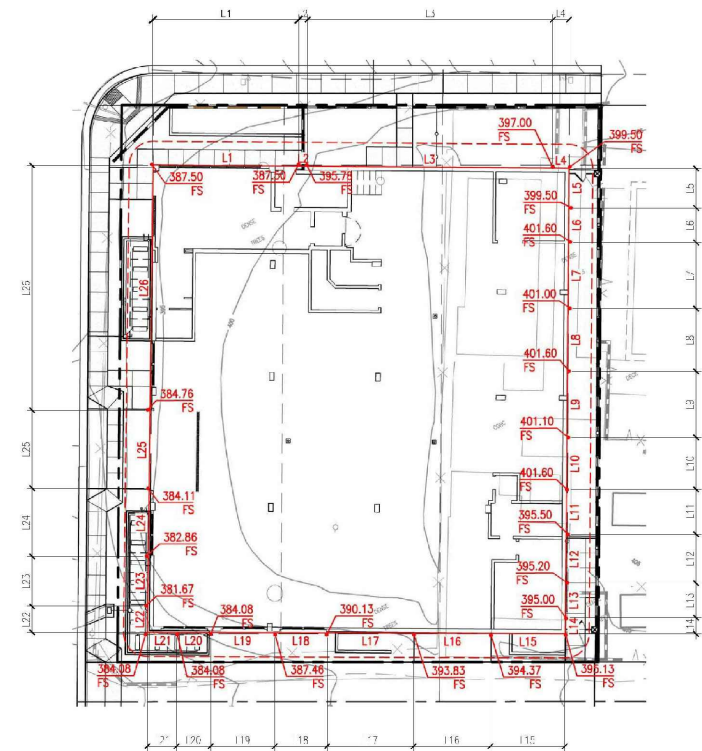
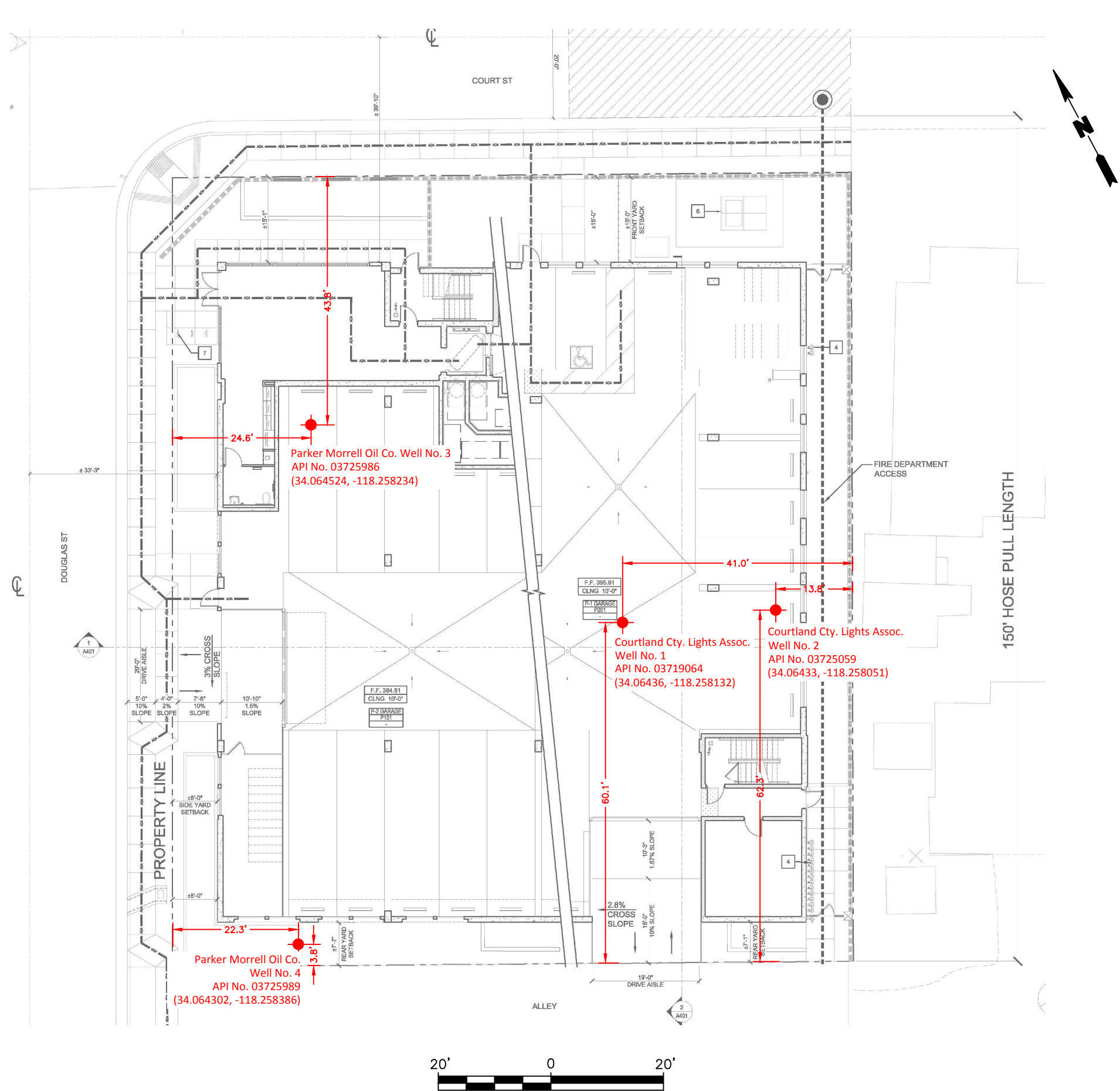


Title:  
**SITE VICINITY**  
 1346-1352 WEST COURT STREET  
 LOS ANGELES, CALIFORNIA

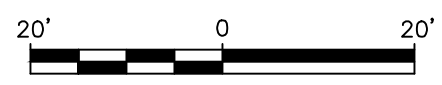
Prepared For:  
**COURT 1300 PARTNERS, LLC**

	Compiled by: PDF	Date: 11/1/2016	FIGURE <b>1</b>
	Prepared by: KJ	Scale: 1:31,680	
	Project Mgr: PGB	Office: LA	
	File No: F(AP)	Project: 2758.0001L00	

V:\CAD\PROJECTS\2765L\0001L\109\2765.0001L109.01.DWG



GRADE PLAN ELEVATION CALCS					
PERIMETER SECTION	ELEV. 1	ELEV. 2	AVERAGE ELEV.	DISTANCE	AVERAGE ELEV x DISTANCE
L1	387.50	387.50	387.50	36.95	14318.13
L2	387.50	395.78	391.64	1.55	607.04
L3	395.78	397.00	396.39	61.95	24558.36
L4	397.00	399.50	398.25	4.04	1908.03
L5	399.50	399.50	399.50	9.85	3935.08
L6	399.50	401.60	400.55	8.83	3536.66
L7	401.60	401.00	401.30	16.33	6553.23
L8	401.00	401.60	401.30	16.04	6436.85
L9	401.60	401.10	401.35	16.54	6838.33
L10	401.10	401.60	401.35	13.22	5305.65
L11	401.60	395.50	398.55	11.43	4555.43
L12	395.50	395.20	395.35	11.98	4738.29
L13	395.20	395.00	395.10	8.85	3496.64
L14	395.00	395.13	395.07	3.91	1544.70
L15	395.13	394.37	394.75	18.66	7366.04
L16	394.37	393.83	394.10	19.25	7566.43
L17	393.83	390.13	391.98	22.06	8847.08
L18	390.13	387.46	388.80	12.89	5011.57
L19	387.46	384.08	385.77	16.43	6338.20
L20	384.08	384.08	384.08	8.20	3149.46
L21	384.08	384.08	384.08	7.00	2888.56
L22	384.08	384.08	384.08	6.62	2542.61
L23	384.08	384.08	384.08	12.59	4835.57
L24	384.08	384.11	384.10	16.71	6418.23
L25	384.11	384.76	384.44	19.94	7865.63
L26	384.76	387.50	386.13	61.15	23611.85
TOTAL				442.97	173690.92
GRADE PLANE					173690.92 / 442.97 = 392.11
*LOWEST ADJACENT GRADE					384.08



**Title:**

**SITE PLAN**

1346, 1350 AND 1354 WEST COURT STREET  
LOS ANGELES, CALIFORNIA

**Prepared For:**

DB COMPANIES

	Compiled by: M.S.	Date: 06JUN17	FIGURE
	Prepared by: B.H.C.	Scale: AS SHOWN	
	Project Mgr: J.C.	Project: 2765.0001L000	
	File: 2765.0001L109.01.DWG	<b>1</b>	