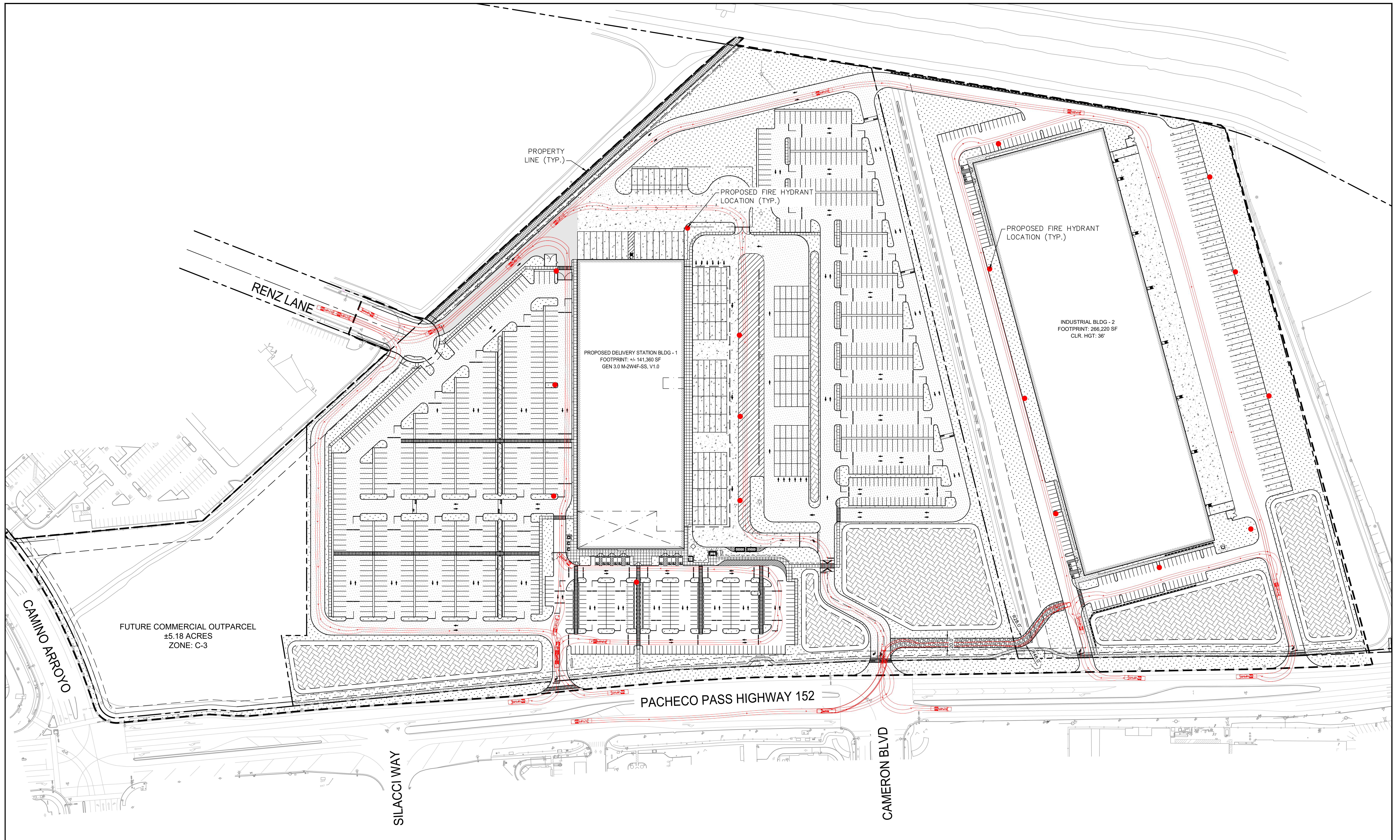

APPENDIX B

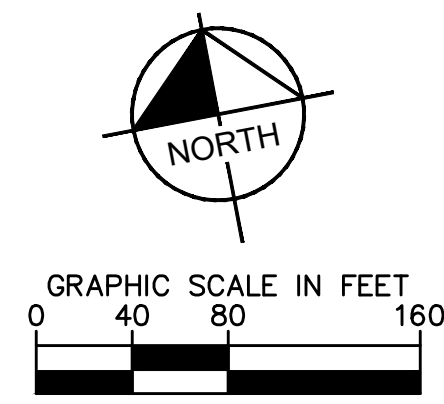
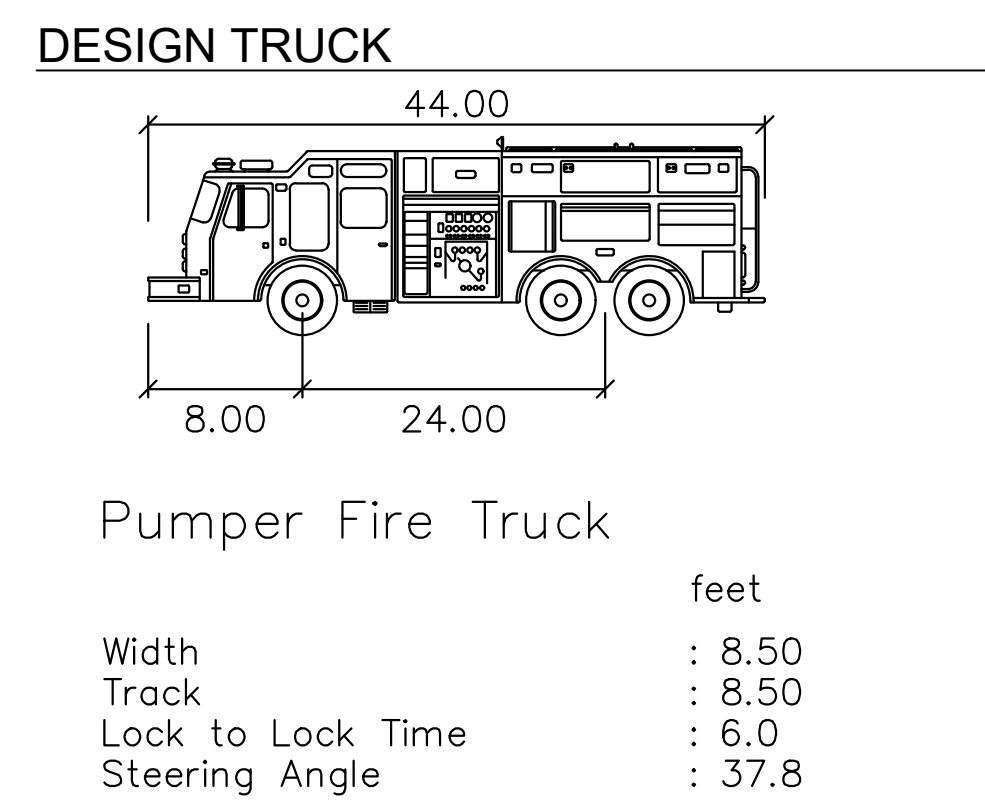
SECONDARY CHANNEL ACCESS ROUTE

K:\SAC_DEV\097913007\Project_Gilroy\DXC1\08_CADD\PlanSheets\097913007 - C601_fire_01.dwg



LEGEND

	PROPERTY LINE
	EASEMENT/SETBACK
	PROPOSED ASPHALT PAVEMENT (CAR PARKING)
	PROPOSED ASPHALT PAVEMENT (VAN PARKING)
	PROPOSED HEAVY DUTY ASPHALT PAVEMENT (TRUCK ROUTE)
	PROPOSED HEAVY DUTY CONCRETE PAVEMENT
	PROPOSED BIKE TRAIL
	PROPOSED SIDEWALK
	PROPOSED LANDSCAPE AREA
	PROPOSED STORMWATER BASIN
	PRELIMINARY FIRE HYDRANT PLACEMENT
	AUTOTURN MOVEMENTS OF DESIGN TRUCK
	REQUIRED FIRE 20' WIDE ROUTE WITH INTERNAL AND EXTERNAL RADII OF 32' AND 40'



DATE	REMARKS
1	
2	
3	
4	
5	
6	
8	

FIRE TRUCK CIRCULATION PLAN

PA / PM:	SKB
DRAWN BY:	AJP
JOB NO.:	097913007
DATE:	04/05/2021

SHEET

C700

8 OF 13

Kimley»Horn

© 2021 KIMLEY-HORN AND ASSOCIATES, INC.
 555 CAPITOL MALL, SUITE 300
 SACRAMENTO, CA 95814
 PHONE: 916-858-5800
 WWW.KIMLEY-HORN.COM

PROJECT GILROY
 CAMINO ARROYO & HWY 152
 GILROY, CALIFORNIA 95020