

**A NEGATIVE CULTURAL
RESOURCES SURVEY REPORT
FOR THE DOLLAR GENERAL CAMPO
PROJECT**

SAN DIEGO COUNTY, CALIFORNIA

PDS2019-LDGRMJ-30250

Lead Agency:

**County of San Diego
Planning & Development Services
Contact: Donna Beddow
5510 Overland Avenue, Suite 310
San Diego, California 92123
(858) 694-3656**

Preparer:

**Jillian L. Hahnen, B.A. and
Brian F. Smith, M.A., Principal Investigator
Brian F. Smith and Associates, Inc.
14010 Poway Road, Suite A
Poway, California 92064
(858) 484-0915**



Signature

Project Proponent:

**NNN Retail Development
15882 Wakefield Lane
San Diego, California 92127**

February 27, 2019

Archaeological Database Information

Authors: Jillian L. Hahnen, B.A. and Brian F. Smith, M.A., Principal Investigator

Consulting Firm: Brian F. Smith and Associates, Inc.
14010 Poway Road, Suite A
Poway, California 92064
(858) 484-0915

Client/Project Proponent: NNN Retail Development
15882 Wakefield Lane
San Diego, California 92127

Report Date: February 27, 2019

Report Title: A Negative Cultural Resources Survey Report for the Dollar General Campo Project, San Diego County, California (PDS2019-LDGRMJ-30250)

Type of Study: Phase I Intensive Pedestrian Survey

New Sites: Three isolates identified

Updated Sites: No sites updated

USGS Quadrangles: *Cameron Corners* and *Campo, California* (7.5 minute)

Acreage: Approximately 2.8 acres

Key Words: USGS *Cameron Corners* and *Campo* Quadrangles (7.5 minute); archaeological survey; isolates; disturbed; negative; no significant effects; monitoring recommended.

February 27, 2019

Donna Beddow
County of San Diego
Planning & Development Services
5510 Overland Avenue, Suite 310
San Diego, California 92123

RE: Cultural Resources Negative Findings for the Dollar General Campo Project, San Diego County, California (PDS2019-LDGRMJ-30250)

Please be advised that a survey has been conducted for the above-referenced project. It has been determined that there are no intact cultural resources present on this property. Three isolates have been identified from within disturbed contexts. The project has been plotted on the attached USGS *Cameron Corners* and *Campo, California* 7.5-minute topographic quadrangle maps for your information. The pertinent survey data is presented below:

County: San Diego

USGS 7.5' Quadrangles: *Cameron Corners* and *Campo*

Date: Digital (no date)

Sections: 3 and 10

Township: 18 South

Range: 5 East

Other Locational Data: The project can be found on Campo Road, east/northeast of the intersection of Highway 94/Campo Road and Dewey Place in the community of Campo, San Diego County, California

Assessor's Parcel Number (APN): 655-120-09

UTM: 549749.84 mE / 361395.84 mN

Elevation: 2,631 to 2,667 feet

Owner and Address: NNN Retail Development, 15882 Wakefield Lane, San Diego, California 92127

Survey Type: Phase I Intensive Pedestrian Survey

Date of Survey: February 12, 2019

Field Crew: Principal Investigator Brian F. Smith directed the field survey with assistance from field technician David Grabski. Native American monitor Jason Pinto of the Jamul Indian Village of California was present for the cultural resources survey of the project area.

INTRODUCTION

Brian F. Smith and Associates, Inc. (BFSA) conducted an archaeological assessment for the Dollar General Campo Project to assess the potential for cultural resources within the Area of Potential Effect (APE). The proposed development consists of a 9,100 square-foot commercial building, 42 parking spaces, a retention pond, landscaping, and associated improvements on APN 655-120-09 in San Diego County, California. The property is mostly vacant, with transmission lines and access roads throughout the APE. Additionally, a modern utility shed is located in the northeast corner of the project area. The parcel is characterized as a disturbed undeveloped field that gently slopes from northwest to southeast. The APE was covered in native chaparral vegetation and grasses and trees at the time of survey.

RESULTS OF THE INSTITUTIONAL RECORDS SEARCHES AND RESEARCH

BFSA reviewed an archaeological records search for a one-mile radius around the project area (Attachment D) that was conducted by the South Coastal Information Center (SCIC) at San Diego State University (SDSU). The SCIC reported that one previously recorded historic building (P-37-014087) was mapped within the project boundaries. However, upon closer inspection, it was identified outside of the APE. Within a one-mile radius of the project, a total of 60 cultural resource locations have been recorded (Table 1 [Attachment C]). The majority of the previously recorded sites are historic (N=33), and include 26 historic structures, 18 of which are associated with the Camp Lockett Historic District, the historic Campo Road/State Route 94 alignment, the historic Union Pacific Railroad alignment, a historic earthen dam, two historic refuse scatters, and two historic isolates. Twenty of the previously recorded sites are prehistoric, including one prehistoric artifact scatter, one prehistoric habitation site, five bedrock milling feature sites with associated lithic scatters, two lithic scatters, and 11 prehistoric isolates. The remaining seven sites are multicomponent sites, including one scatter of prehistoric and historic artifacts, three prehistoric habitation sites with historic refuse scatters, and three sites consisting of bedrock milling features with associated scatters of prehistoric and historic artifacts.

BFSA also reviewed the following historic sources:

- The National Register of Historic Places Index
- The Office of Historic Preservation, Archaeological Determinations of Eligibility
- The Office of Historic Preservation, Directory of Properties in the Historic Property Data File
- The USGS 7.5-minute *Cameron Corners* and *Campo* Quadrangle maps (n.d., digital)
- San Diego County Historic Roads Map (1769 to 1885)
- Official Map of San Diego County (1872)

BFSA requested a records search of the Sacred Lands File (SLF) by the Native American Heritage Commission (NAHC) (Attachment E). The NAHC SLF search was positive, but did not indicate that sites or Tribal Cultural Resources have been located directly within the project (see Attachment E). In accordance with the recommendations of the NAHC, BFSA contacted all Native American consultants listed in the NAHC response letter. As of the date of this report, one response has been received. The Campo Band of Mission Indians requested that a Kumeyaay monitor be present during any future surveys and ground disturbing activities associated with the project.

RESULTS OF THE FIELD SURVEY

The archaeological survey of the subject property was conducted on February 12, 2019. The intensive pedestrian survey was directed by Principal Investigator Brian F. Smith with assistance from field technician David Grabski. Native American monitor Jason Pinto of the Jamul Indian Village of California was present for the cultural resources survey of the project.

The entire project was accessible for the survey, which included an intensive reconnaissance consisting of a series of parallel survey transects spaced at approximately 10-meter intervals oriented from east to west across the property, as appropriate. The entire property was accessible and ground surface visibility was approximately 80.00 percent, with short green grasses, weeds, and bushes obscuring ground visibility in some areas. In general, the property consists of a disturbed, undeveloped field that gently slopes from northwest to southeast and contains native chaparral bushes, and trees. A single, highly exfoliated bedrock outcrop is located in the east portion of the APE. Given the high frequency of prehistoric archaeological sites in the region, the bedrock was closely inspected for signs of prehistoric milling features, but none were identified. An access road crosses into the project area along the northern border. Throughout the project area, tire treads are visible and transmission lines are present. A single modern utility shed is located in the northwestern corner of the project area. Aerial photographs are only available for the project as far back as 1994. These photographs show that the property was left undeveloped, with the exception of the transmission lines and tire treads that are currently visible. The property is bound on the south by Campo Road, on the east by an unnamed residential access road, and on the north and west by wire fencing.

The pedestrian survey indicated that the property had been affected by the construction of transmission power lines and by recreational driving throughout the APE. The characterization of the property as disturbed is relevant to the consideration of cultural resources on the property. For the current APE, if surface deposits of cultural resources were present, they would have been readily observable within the APE. Photographs were taken to document project conditions at the time of the survey (Plates 1 and 2).



Plate 1: Overview of the project from the northwest corner, looking east.



Plate 2: Overview of the project from the southeast corner, looking northwest.

The survey resulted in the identification of three isolates. Isolate 1 consisted of one historic can fragment (Plate 3). The can likely dates to the mid-twentieth century and contained food items; however, the fragmentary nature of the can limits the diagnostic potential of the object. Isolate 2 is an historic hole-in-top soldered can which also likely contained food items (Plate 4). Hole-in-top soldered cans became popular in the 1840s and were manufactured through the 1940s (Rock 1990). Isolate 3 consists of two fragments of marine shell: one *Pecten sp.* fragment and one *Chione sp.* Fragment (Plate 5). All isolates were left in situ, photographed, and their locations were recorded with sub-meter GPS equipment. State of California Department of Parks and Recreation forms were completed and submitted to the SCIC at SDSU (Attachment A).



Plate 3: View of Isolate 1, a historic can fragment.



Plate 4: View of Isolate 2, a historic hole-in-top solder can.



Plate 5: View of Isolate 3, shell fragments.

The Phase I archaeological assessment for the Dollar General Campo Project was negative for the presence of intact cultural resources. Three isolates were discovered on the surface of the disturbed project APE. While these isolates were identified and recorded, they do not retain any further research value. Based upon the results of the survey and the lack of significant, undisturbed cultural resources on this property, no site-specific mitigation measures will be required. However, because of the number of recorded sites in close proximity to the project APE, mitigation monitoring will be recommended as a condition of approval. Monitoring would be conditioned to include both an archaeologist and a Native American representative during the grading.

Sincerely,



Brian F. Smith
Principal Investigator
Brian F. Smith and Associates, Inc.
14010 Poway Road, Suite A
Poway, California 92064
(858) 484-0915

Attachments:

Attachment A – New Isolate Forms
Attachment B – Figures
Attachment C – Table 1
Attachment D – Archaeological Records Search Results
Attachment E – NAHC Sacred Lands File Search Results

ATTACHMENT A

New Isolate Forms

(Deleted for Public Review; Bound Separately)

ATTACHMENT B

Figures

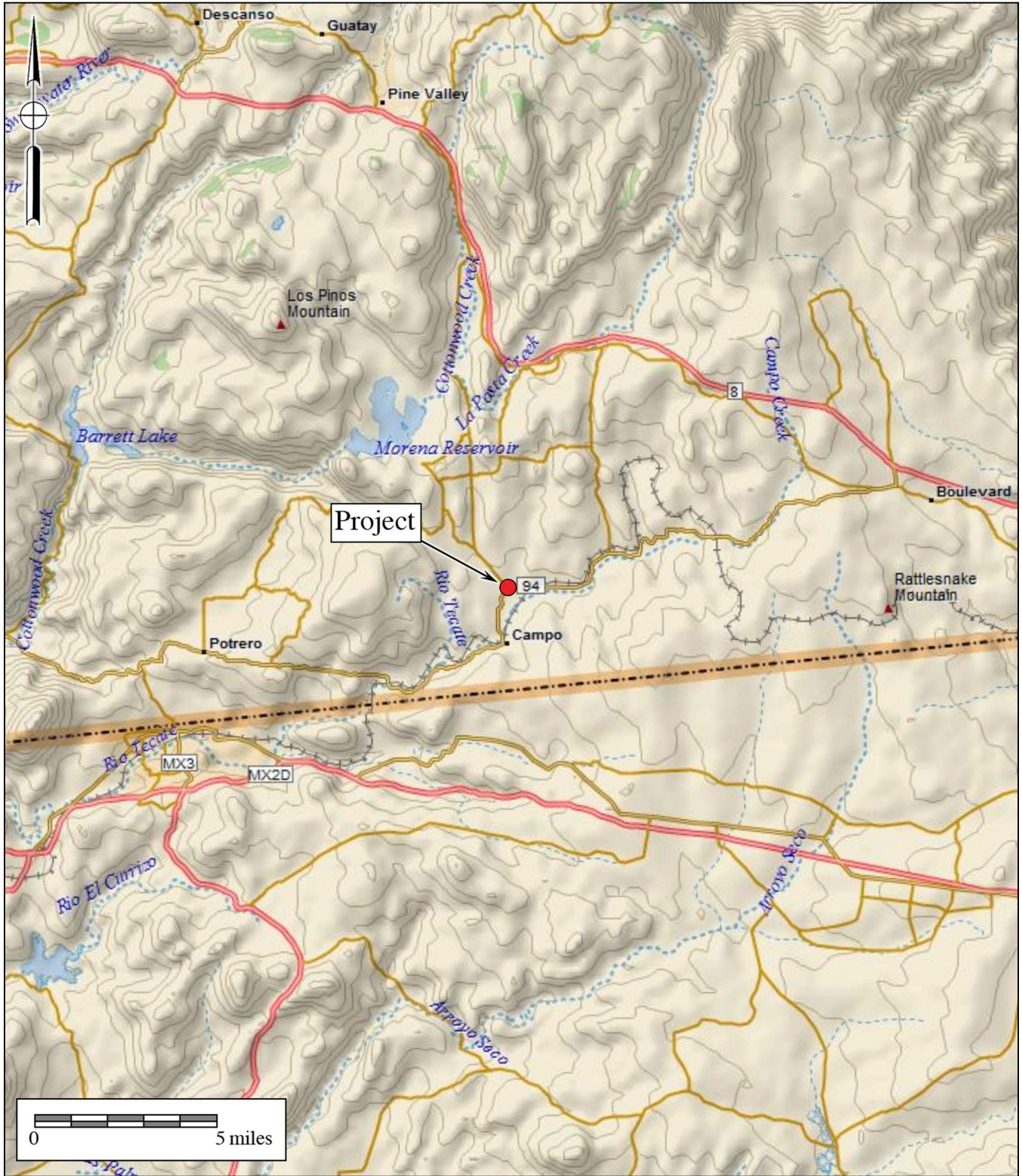


Figure 1

General Location Map

The Dollar General Campo Project

DeLorme (1:250,000)



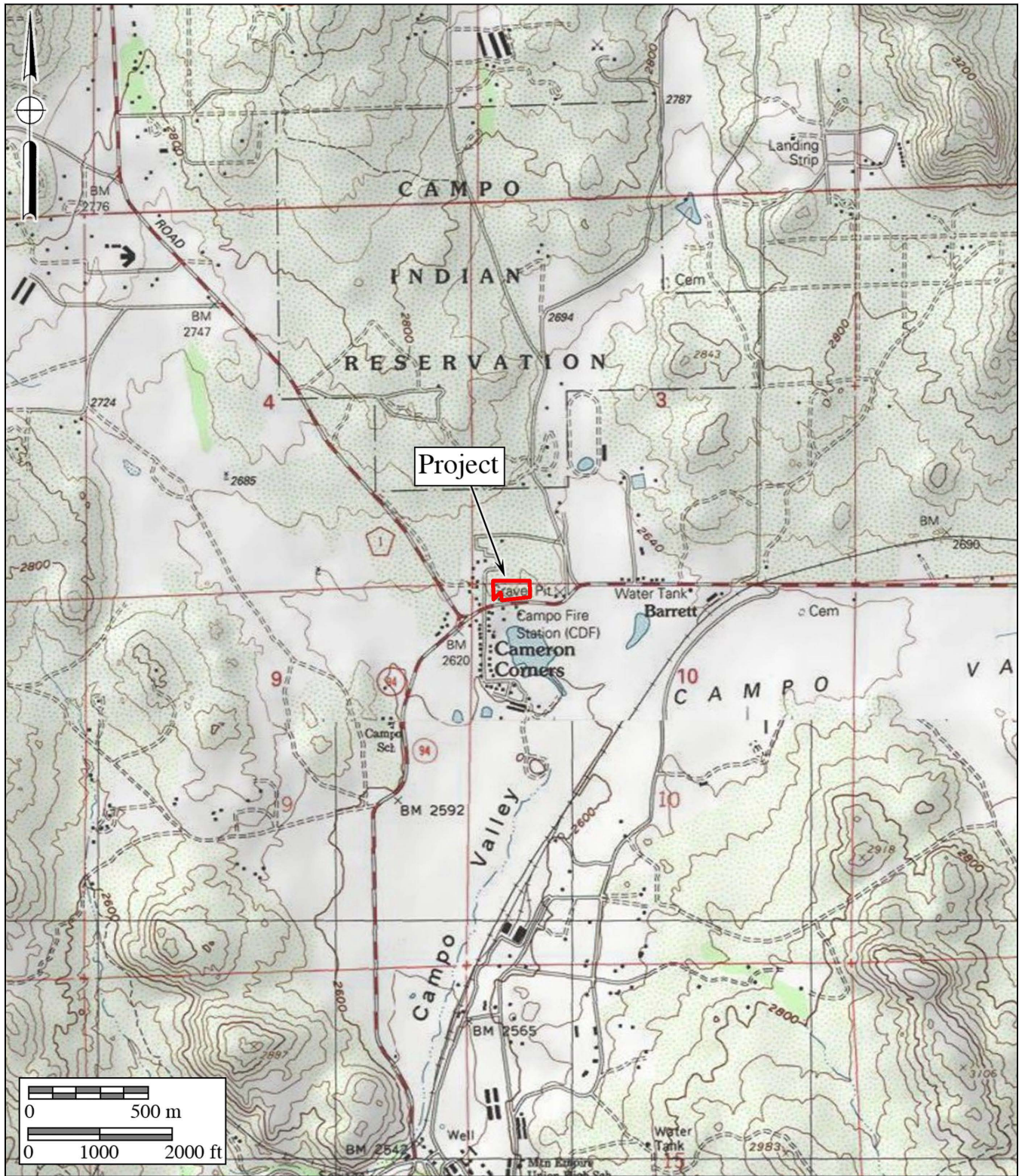


Figure 2

Project Location Map

The Dollar General Campo Project

USGS *Cameron Corners* and *Campo* Quadrangles (7.5-minute series)



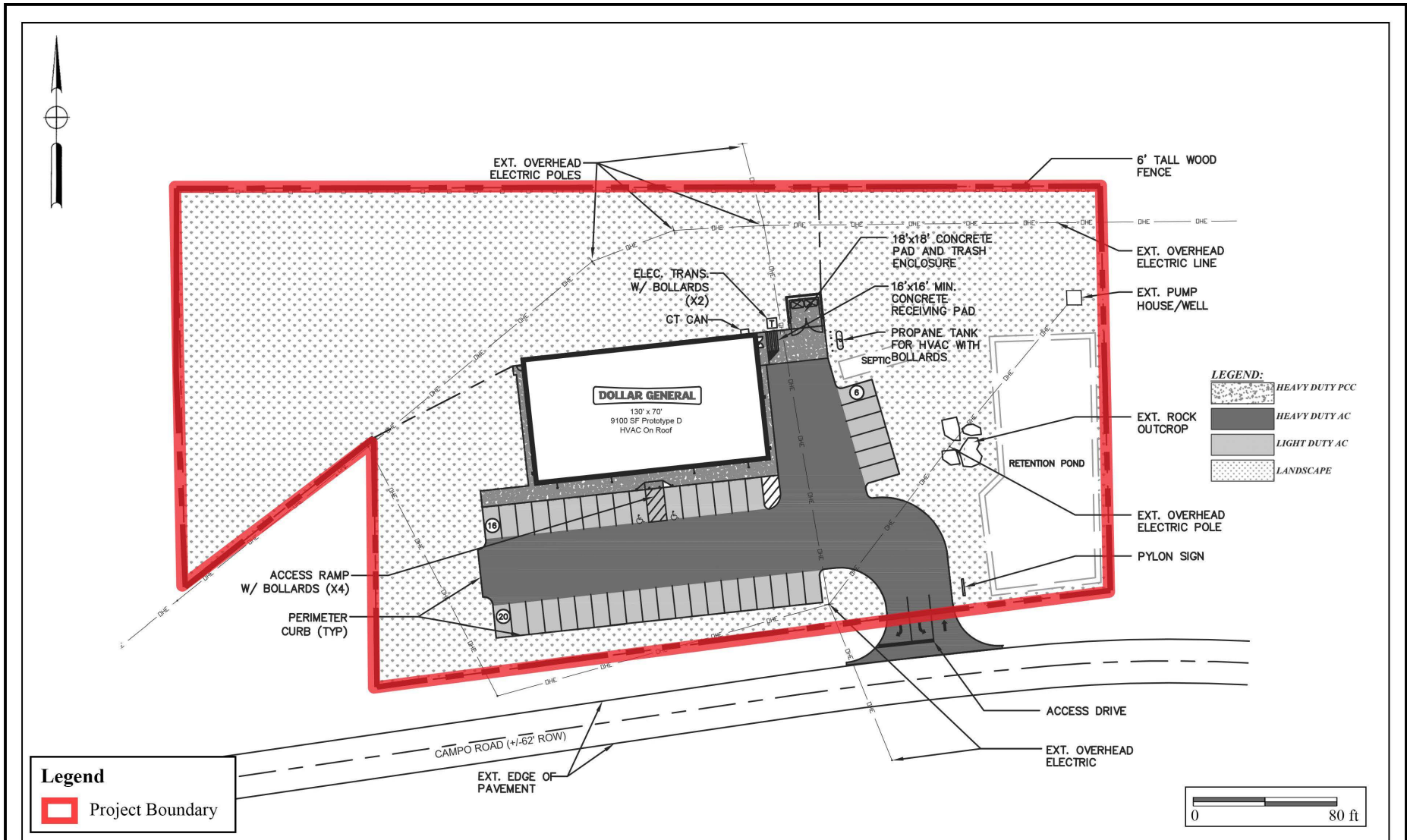


Figure 3
Project Development Map
The Dollar General Campo Project



ATTACHMENT C

Table 1

Table 1
 Archaeological Sites Located Within
 a One-Mile Radius of the Dollar General Campo Project

Site Number	Site Type	Site Dimensions	Report Reference / Reported By
SDI-9612H	Historic structure(s) associated with the Camp Lockett Historic District	90 acres	J. Elliott; subsequently updated by S. Wade et al.
SDI-9613H		N/A	J. Elliott; subsequently updated by S. Wade et al.
SDI-16,740		N/A	H. Thomson et al.
SDI-16,742		N/A	H. Thomson et al.
SDI-16,744		N/A	H. Thomson et al.
SDI-16,745		N/A	H. Thomson et al.
SDI-16,746		N/A	H. Thomson et al.
SDI-16,747		N/A	H. Thomson et al.
SDI-16,748		N/A	H. Thomson et al.
SDI-16,749		N/A	H. Thomson et al.
SDI-16,750		N/A	H. Thomson et al.
SDI-16,751		N/A	H. Thomson et al.
SDI-16,752		N/A	S. Wade et al.
SDI-16,753		N/A	H. Thomson et al.
SDI-16,754		N/A	H. Thomson et al.
SDI-16,766		N/A	B. Bruce et al.
SDI-16,767		N/A	B. Bruce et al.
SDI-16,768		N/A	B. Bruce et al.
SDI-11,714H	Historic structure(s)	20 x 20 meters; 400 square meters	S. Crull and K. Smith, Ghost Rider Ltd.; subsequently updated by D. Palette, ASM Affiliates, Inc.
P-37-014087		1,387 square feet	M. Thornton, California Department of Forestry
P-37-027795		N/A	D. Laylander and D. Palette, ASM Affiliates
P-37-027863		N/A	D. Laylander and D. Palette, ASM Affiliates
P-37-027864		N/A	D. Laylander and D. Palette, ASM Affiliates
P-37-027865		N/A	D. Laylander and D. Palette, ASM Affiliates
P-37-027866		N/A	D. Laylander and D. Palette, ASM Affiliates
P-37-027868		N/A	D. Laylander and D.

Site Number	Site Type	Site Dimensions	Report Reference / Reported By
			Pallette, ASM Affiliates
SDI-6981H	Historic Campo Road/State Route 94	Unknown	D. Burkenroad; subsequently updated by S. Bholat and K. Lauki, ECORP Consulting, Inc; subsequently updated by D. Dominici and K. Tsunoda, Caltrans District 11; subsequently updated by D.E. Supernowicz, Caltrans Headquarters
P-37-025680	Historic Union Pacific Railroad	150 miles	S. Wee and P. Ferrell, JRP Historical Consulting Services; subsequently updated by D. Iversen, ASM Affiliates; subsequently updated by D. Pallette, ASM Affiliates, Inc.; subsequently updated by S. Ni Ghabhlain and S. Stringer-Bowsher, ASM Affiliates; subsequently updated by B. Williams, ASM Affiliates, Inc.; subsequently updated by A. Giacinto and S. Wolf, ASM Affiliates; most recently updated by B. Comeau
P-37-029175	Historic dam	N/A	D. Gallegos and L. Tift, Gallegos and Associates
P-37-029167	Historic isolate	N/A	D. Gallegos and L. Tift, Gallegos and Associates
P-37-029169		N/A	D. Gallegos and L. Tift, Gallegos and Associates
SDI-18,683	Historic refuse scatter	120 x 60 meters	D. Gallegos and L. Tift, Gallegos and Associates
SDI-18,684		60 x 40 meters	D. Gallegos and L. Tift, Gallegos and Associates
SDI-15,097	Prehistoric artifact scatter and a historic	45 x 25 meters	J. Eighmey, ASM Affiliates, Inc.

Site Number	Site Type	Site Dimensions	Report Reference / Reported By
	refuse scatter		
SDI-18,678	Prehistoric habitation site and a historic refuse scatter	740 x 400 meters	N. Doose, Gallegos and Associates; subsequently updated by ASM Affiliates
SDI-18,680		300 x 200 meters	L. Tift and N. Doose, Gallegos and Associates; subsequently updated by ASM Affiliates
SDI-18,681		480 x 250 meters	L. Tift and N. Doose, Gallegos and Associates; subsequently updated by ASM Affiliates
SDI-18,682	Multicomponent site with prehistoric milling features, a prehistoric artifact scatter, and a historic refuse scatter	200 x 200 meters	D. Gallegos and L. Tift, Gallegos and Associates; subsequently updated by S. Castells, ASM Affiliates, Inc.
SDI-18,688		40 x 120 meters	D. Gallegos and L. Tift, Gallegos and Associates; subsequently updated by S. Castells, ASM Affiliates, Inc.
SDI-18,697		140 x 220 meters	D. Gallegos and L. Tift, Gallegos and Associates; subsequently updated by S. Castells, ASM Affiliates, Inc.
SDI-15,098	Prehistoric artifact scatter	19 x 19 meters	J. Eighmey, ASM Affiliates, Inc.
SDI-18,679	Prehistoric habitation site	320 x 260 meters	N. Doose, Gallegos and Associates; subsequently updated by ASM Affiliates
SDI-9614	Prehistoric lithic scatter with bedrock milling features	75 x 105 meters	M. Roeder, SRS
SDI-18,685		160 x 280 meters	D. Gallegos and L. Tift, Gallegos and Associates; subsequently updated by S. Castells et al., ASM Affiliates
SDI-18,689		200 x 200 meters	D. Gallegos and L. Tift, Gallegos and Associates; subsequently updated by

Site Number	Site Type	Site Dimensions	Report Reference / Reported By
			S. Castells et al., ASM Affiliates
SDI-18,690		10 x 10 meters	D. Gallegos and L. Tift, Gallegos and Associates
SDI-18,698		20 x 20 meters	D. Gallegos and L. Tift, Gallegos and Associates; subsequently updated by S. Castells et al., ASM Affiliates
SDI-12,712		450 x 100 meters; 45,000 square meters	A Pigniolo et al., WESTEC Services, Inc.
P-37-017054	Prehistoric lithic scatter	30 x 30 meters	J. Eighmey, ASM Affiliates, Inc.; subsequently updated by A. Pigniolo and J. Smallwood, Tierra Environmental Services
P-37-029148		N/A	D. Gallegos and L. Tift, Gallegos and Associates
P-37-029149		N/A	D. Gallegos and L. Tift, Gallegos and Associates
P-37-029150		N/A	D. Gallegos and L. Tift, Gallegos and Associates
P-37-029166		N/A	D. Gallegos and L. Tift, Gallegos and Associates
P-37-029168		N/A	D. Gallegos and L. Tift, Gallegos and Associates
P-37-029170	Prehistoric isolate	N/A	D. Gallegos and L. Tift, Gallegos and Associates
P-37-029171		N/A	D. Gallegos and L. Tift, Gallegos and Associates
P-37-029172		N/A	D. Gallegos and L. Tift, Gallegos and Associates
P-37-029173		N/A	D. Gallegos and L. Tift, Gallegos and Associates
P-37-029174		N/A	D. Gallegos and L. Tift, Gallegos and Associates
P-37-035580		N/A	I. Cordova, PanGIS, Inc.

ATTACHMENT D

Archaeological Records Search Results

(Deleted for Public Review; Bound Separately)

ATTACHMENT E

NAHC Sacred Lands File Search Results

(Deleted for Public Review; Bound Separately)