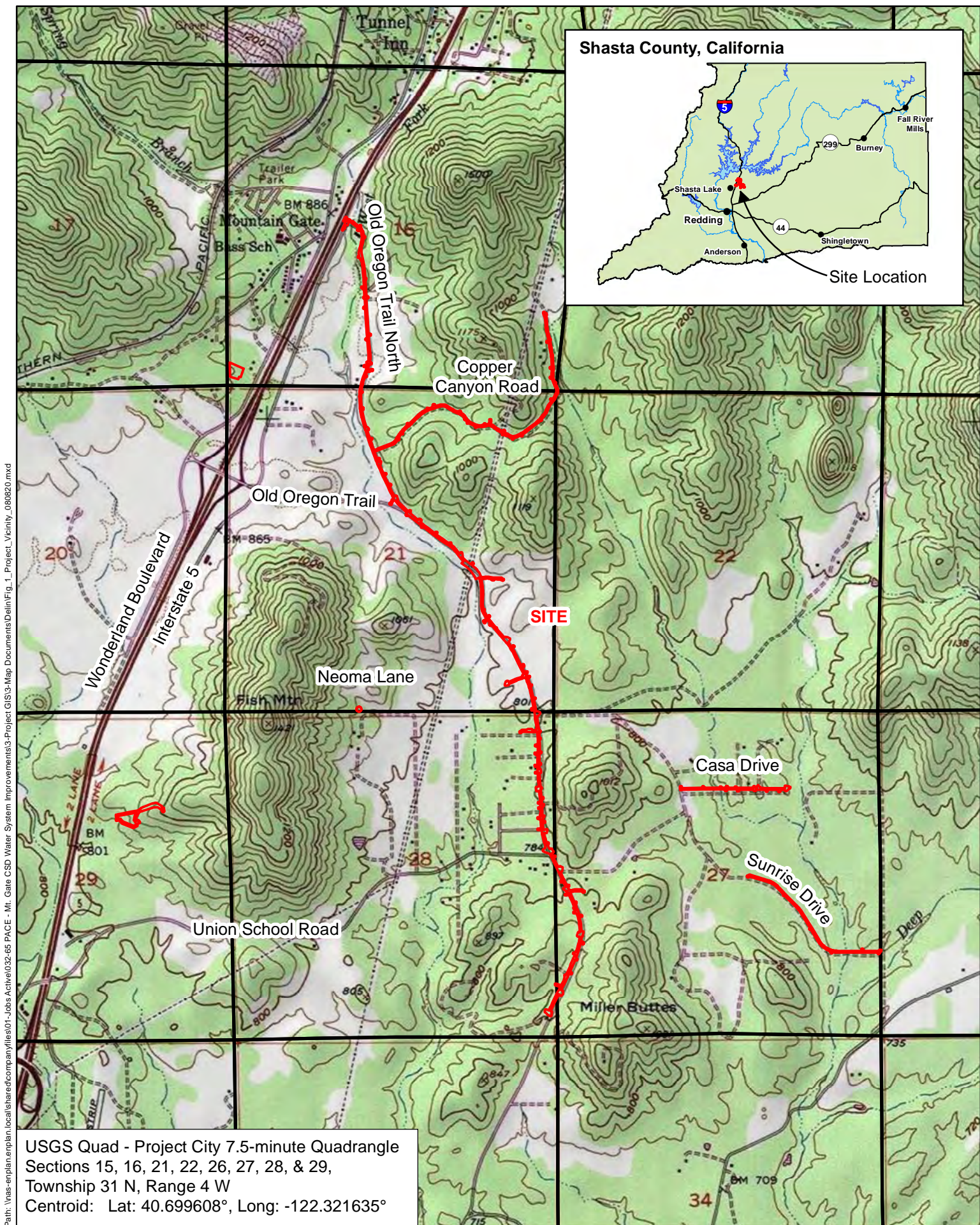

APPENDIX C

WETLANDS AND OTHER WATERS OF THE U.S. AND/OR STATE
(MAP EXHIBITS)



Path: \\nas-enplan\enplan\local\share\company\files\01-jobs\active\032-65 PACE - Mt. Gate CSD Water System Improvements\3-Project GIS\3-Map Documents\Delin\Fig_1_Project_Vicinity_080820.mxd

All depictions are approximate. Not a survey product. 02.18.21



Figure 1
Project Vicinity

-122.329742
40.717228

Potential Waters by Map ID					
Map ID	Type	Average Width (feet)	Length (feet)	Area	
				sq. ft.	acres
Wetlands					
21:SW	Seasonal Wetland	—	—	387	0.009
Other Waters					
1:IS	Intermittent Stream	—	—	1,546	0.035
2:CD	Constructed Ditch	2.0	10	20	0.000
3:CD	Constructed Ditch	1.5	17	26	0.001
4:CD	Constructed Ditch	1.0	290	290	0.007
5:CD	Constructed Ditch	2.0	852	1,704	0.039
6:CD	Constructed Ditch	2.0	772	1,544	0.035
7:CD	Constructed Ditch	2.5	688	1,720	0.039
8:ES	Ephemeral Stream	3.0	6	18	<0.001
9:CD	Constructed Ditch	1.5	170	255	0.006
10:CD	Constructed Ditch	1.5	287	431	0.010
11:ES	Ephemeral Stream	2.0	2	4	<0.001
12:CD	Constructed Ditch	1.5	495	743	0.017
13:CD	Constructed Ditch	1.5	216	324	0.007
14:CD	Constructed Ditch	1.0	182	182	0.004
15:IS	Intermittent Stream	4.0	3	12	<0.001
16:CD	Constructed Ditch	1.0	140	140	0.003
17:IS	Intermittent Stream	4.0	14	56	0.001
18:CD	Constructed Ditch	1.0	193	193	0.004
19:CD	Constructed Ditch	1.0	254	254	0.006
20:CD	Constructed Ditch	1.0	92	92	0.002
22:IS	Intermittent Stream	4.0	3	12	<0.001
23:CD	Constructed Ditch	1.5	30	45	0.001
24:CD	Constructed Ditch	2.0	164	328	0.008
25:IS	Intermittent Stream	2.0	3	6	<0.001
26:CD	Constructed Ditch	1.0	148	148	0.003
27:CD	Constructed Ditch	1.0	285	285	0.007
28:CD	Constructed Ditch	1.5	56	84	0.002
29:CD	Constructed Ditch	1.5	53	80	0.002
30:CD	Constructed Ditch	1.0	591	591	0.014
31:CD	Constructed Ditch	1.5	64	96	0.002
32:CD	Constructed Ditch	1.0	34	34	0.001
33:CD	Constructed Ditch	1.0	80	80	0.002
34:CD	Constructed Ditch	1.5	176	264	0.006
35:CD	Constructed Ditch	1.0	35	35	0.001
36:CD	Constructed Ditch	2.0	111	222	0.005
37:CD	Constructed Ditch	1.0	31	31	0.001
38:CD	Constructed Ditch	1.0	9	9	<0.001
39:IS	Intermittent Stream	3.0	27	81	0.002
40:CD	Constructed Ditch	1.0	26	26	0.001
41:ES	Ephemeral Stream	2.0	73	146	0.003
42:IS	Intermittent Stream	4.0	33	132	0.003
43:CD	Constructed Ditch	1.0	259	259	0.006
44:CD	Constructed Ditch	1.0	62	62	0.001
45:CD	Constructed Ditch	1.0	435	435	0.010
46:IS	Intermittent Stream	—	—	21	<0.001
47:CD	Constructed Ditch	1.5	231	347	0.008
48:CD	Constructed Ditch	1.0	30	30	0.001
49:IS	Intermittent Stream	—	—	256	0.006
50:CD	Constructed Ditch	1.0	791	791	0.018
51:ES	Ephemeral Stream	1.5	7	11	<0.001
52:CD	Constructed Ditch	2.0	42	84	0.002
53:IS	Intermittent Stream	4.0	3	12	<0.001
54:IS	Intermittent Stream	4.0	11	44	0.001
55:CD	Constructed Ditch	1.0	564	564	0.013
56:CD	Constructed Ditch	1.5	558	837	0.019
57:CD	Constructed Ditch	1.0	232	232	0.005
58:CD	Constructed Ditch	1.0	85	85	0.002
59:CD	Constructed Ditch	2.0	644	1,288	0.030
60:IS	Intermittent Stream	—	—	2,775	0.064
61:CD	Constructed Ditch	1.0	307	307	0.007
62:IS	Intermittent Stream	4.0	18	72	0.002
63:CD	Constructed Ditch	1.0	34	34	0.001
64:ES	Ephemeral Stream	1.5	88	132	0.003
65:CD	Constructed Ditch	1.0	6	6	<0.001
66:CD	Constructed Ditch	1.2	320	384	0.009
67:CD	Constructed Ditch	1.0	152	152	0.003
68:ES	Ephemeral Stream	1.5	16	24	0.001
69:CD	Constructed Ditch	1.0	231	231	0.005
70:CD	Constructed Ditch	1.0	92	92	0.002
Total Waters				22,273	0.509

Figure 4 Waters of the U.S. and/or State	
Project:	Mountain Gate Water System Improvements Project
Delineator:	John Luper
Date:	April 19 & 26; August 2, 2020
Date Revised:	February 28, 2021
Map Preparer:	Allison Loveless

- ▭ Study Area Boundary (±25.4 acres)
- ▬ Intermittent Stream (±0.115 acres)
- ▬ Ephemeral Stream (±0.007 acres)
- ▬ Constructed Ditch (±0.378 acres)
- Flow Direction
- Culvert
- Match Line
- 2-foot Contours

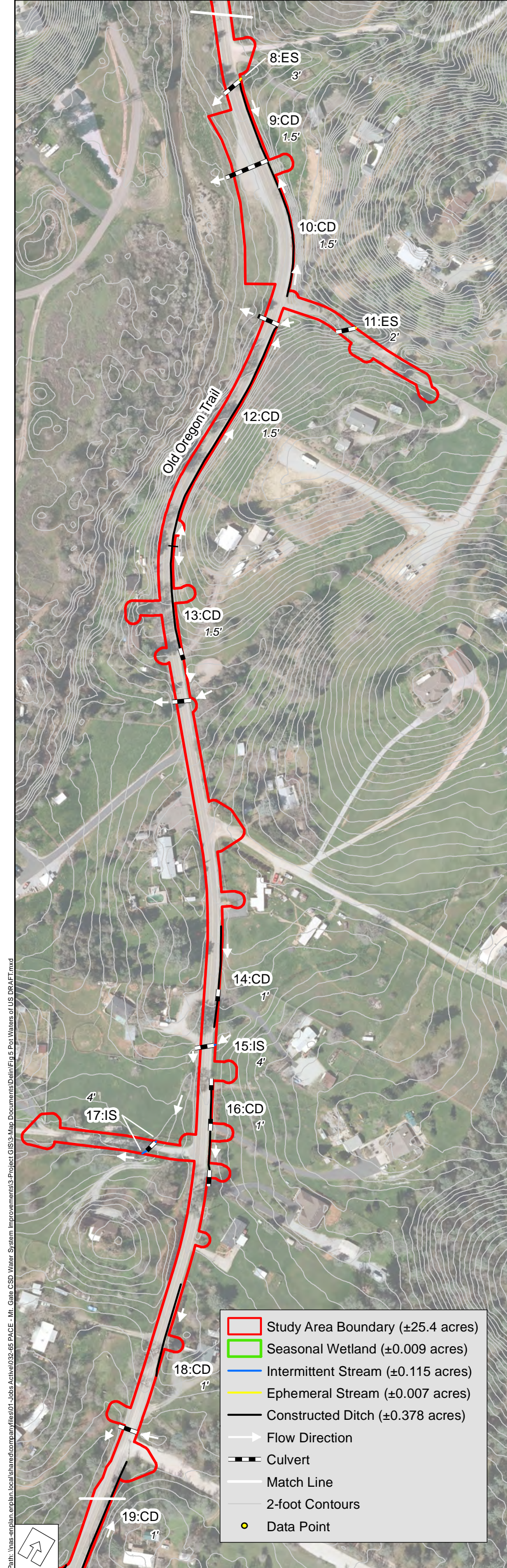
1 inch = 200 feet
0 200 Feet

NAVD 1988

Boundaries are preliminary until verified by the Army Corps of Engineers and Regional Water Quality Control Board. All depictions are approximate. Not a survey product. 02.18.21



Path: \\nas-enplan-enplan.local\share\companyfiles\01-Jobs Active\032-65 PACE - Mt. Gate CSD Water System Improvements\3-Project\GIS\3-Map_Documents\Dein\Fig 4 Pot Waters of US DRAFT.mxd



- ▬ Study Area Boundary (±25.4 acres)
- ▬ Seasonal Wetland (±0.009 acres)
- ▬ Intermittent Stream (±0.115 acres)
- ▬ Ephemeral Stream (±0.007 acres)
- ▬ Constructed Ditch (±0.378 acres)
- ▬ Flow Direction
- ▬ Culvert
- ▬ Match Line
- ▬ 2-foot Contours
- Data Point

1 inch = 200 feet
 0 200 Feet

NAVD 1988

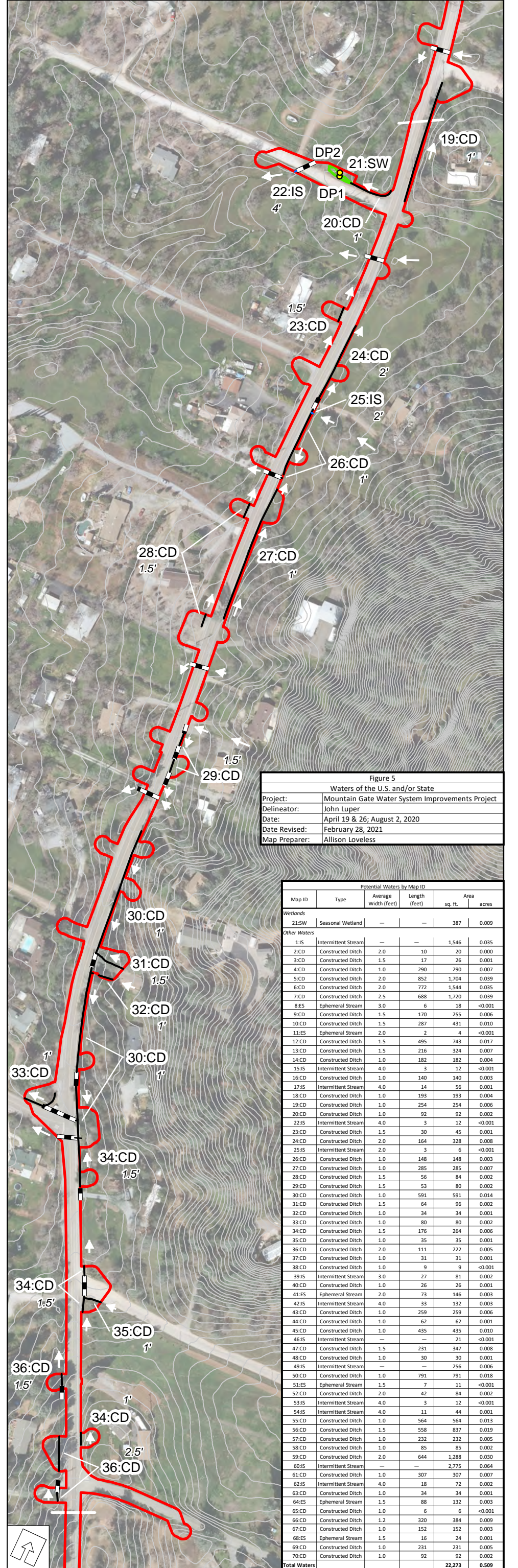


Figure 5
 Waters of the U.S. and/or State
 Project: Mountain Gate Water System Improvements Project
 Delineator: John Luper
 Date: April 19 & 26; August 2, 2020
 Date Revised: February 28, 2021
 Map Preparer: Allison Loveless

Potential Waters by Map ID					
Map ID	Type	Average Width (feet)	Length (feet)	sq. ft.	Area acres
Wetlands					
21:SW	Seasonal Wetland	—	—	387	0.009
Other Waters					
1:IS	Intermittent Stream	—	—	1,546	0.035
2:CD	Constructed Ditch	2.0	10	20	0.000
3:CD	Constructed Ditch	1.5	17	26	0.001
4:CD	Constructed Ditch	1.0	290	290	0.007
5:CD	Constructed Ditch	2.0	852	1,704	0.039
6:CD	Constructed Ditch	2.0	772	1,544	0.035
7:CD	Constructed Ditch	2.5	688	1,720	0.039
8:ES	Ephemeral Stream	3.0	6	18	<0.001
9:CD	Constructed Ditch	1.5	170	255	0.006
10:CD	Constructed Ditch	1.5	287	431	0.010
11:ES	Ephemeral Stream	2.0	2	4	<0.001
12:CD	Constructed Ditch	1.5	495	743	0.017
13:CD	Constructed Ditch	1.5	216	324	0.007
14:CD	Constructed Ditch	1.0	182	182	0.004
15:IS	Intermittent Stream	4.0	3	12	<0.001
16:CD	Constructed Ditch	1.0	140	140	0.003
17:IS	Intermittent Stream	4.0	14	56	0.001
18:CD	Constructed Ditch	1.0	193	193	0.004
19:CD	Constructed Ditch	1.0	254	254	0.006
20:CD	Constructed Ditch	1.0	92	92	0.002
22:IS	Intermittent Stream	4.0	3	12	<0.001
23:CD	Constructed Ditch	1.5	30	45	0.001
24:CD	Constructed Ditch	2.0	164	328	0.008
25:IS	Intermittent Stream	2.0	3	6	<0.001
26:CD	Constructed Ditch	1.0	148	148	0.003
27:CD	Constructed Ditch	1.0	285	285	0.007
28:CD	Constructed Ditch	1.5	56	84	0.002
29:CD	Constructed Ditch	1.5	53	80	0.002
30:CD	Constructed Ditch	1.0	591	591	0.014
31:CD	Constructed Ditch	1.5	64	96	0.002
32:CD	Constructed Ditch	1.0	34	34	0.001
33:CD	Constructed Ditch	1.0	80	80	0.002
34:CD	Constructed Ditch	1.5	176	264	0.006
35:CD	Constructed Ditch	1.0	35	35	0.001
36:CD	Constructed Ditch	2.0	111	222	0.005
37:CD	Constructed Ditch	1.0	31	31	0.001
38:CD	Constructed Ditch	1.0	9	9	<0.001
39:IS	Intermittent Stream	3.0	27	81	0.002
40:CD	Constructed Ditch	1.0	26	26	0.001
41:ES	Ephemeral Stream	2.0	73	146	0.003
42:IS	Intermittent Stream	4.0	33	132	0.003
43:CD	Constructed Ditch	1.0	259	259	0.006
44:CD	Constructed Ditch	1.0	62	62	0.001
45:CD	Constructed Ditch	1.0	435	435	0.010
46:IS	Intermittent Stream	—	—	21	<0.001
47:CD	Constructed Ditch	1.5	231	347	0.008
48:CD	Constructed Ditch	1.0	30	30	0.001
49:IS	Intermittent Stream	—	—	256	0.006
50:CD	Constructed Ditch	1.0	791	791	0.018
51:ES	Ephemeral Stream	1.5	7	11	<0.001
52:CD	Constructed Ditch	2.0	42	84	0.002
53:IS	Intermittent Stream	4.0	3	12	<0.001
54:IS	Intermittent Stream	4.0	11	44	0.001
55:CD	Constructed Ditch	1.0	564	564	0.013
56:CD	Constructed Ditch	1.5	558	837	0.019
57:CD	Constructed Ditch	1.0	232	232	0.005
58:CD	Constructed Ditch	1.0	85	85	0.002
59:CD	Constructed Ditch	2.0	644	1,288	0.030
60:IS	Intermittent Stream	—	—	2,775	0.064
61:CD	Constructed Ditch	1.0	307	307	0.007
62:IS	Intermittent Stream	4.0	18	72	0.002
63:CD	Constructed Ditch	1.0	34	34	0.001
64:ES	Ephemeral Stream	1.5	88	132	0.003
65:CD	Constructed Ditch	1.0	6	6	<0.001
66:CD	Constructed Ditch	1.2	320	384	0.009
67:CD	Constructed Ditch	1.0	152	152	0.003
68:ES	Ephemeral Stream	1.5	16	24	0.001
69:CD	Constructed Ditch	1.0	231	231	0.005
70:CD	Constructed Ditch	1.0	92	92	0.002
Total Waters				22,273	0.589

Boundaries are preliminary until verified by the Army Corps of Engineers and Regional Water Quality Control Board. All depictions are approximate. Not a survey product. 02.18.21



- ▭ Study Area Boundary (±25.4 acres)
- Intermittent Stream (±0.115 acres)
- Ephemeral Stream (±0.007 acres)
- Constructed Ditch (±0.378 acres)
- ▬▬▬ Culvert
- Flow Direction
- Match Line
- 2-foot Contours

Figure 6 Waters of the U.S. and/or State	
Project:	Mountain Gate Water System Improvements Project
Delineator:	John Luper
Date:	April 19 & 26; August 2, 2020
Date Revised:	February 28, 2021
Map Preparer:	Allison Loveless



Potential Waters by Map ID						Potential Waters by Map ID							
Map ID	Type	Average Width (feet)	Length (feet)	Area sq. ft.	Area acres	Map ID	Type	Average Width (feet)	Length (feet)	Area sq. ft.	Area acres		
21:SW	Seasonal Wetland	—	—	387	0.009	37:CD	Constructed Ditch	1.0	31	31	0.001		
Wetlands						Other Waters							
2:CD	Constructed Ditch	2.0	20	<0.001	<0.001	38:CD	Constructed Ditch	1.0	9	9	<0.001		
1:IS	Intermittent Stream	—	—	1,546	0.035	39:IS	Intermittent Stream	3.0	27	81	0.002		
3:CD	Constructed Ditch	1.5	17	26	0.001	40:CD	Constructed Ditch	1.0	26	26	0.001		
4:CD	Constructed Ditch	1.0	290	290	0.007	41:ES	Ephemeral Stream	2.0	73	146	0.003		
5:CD	Constructed Ditch	2.0	852	1,704	0.039	42:IS	Intermittent Stream	4.0	33	132	0.003		
6:CD	Constructed Ditch	2.0	772	1,544	0.035	43:CD	Constructed Ditch	1.0	259	259	0.006		
7:CD	Constructed Ditch	2.5	688	1,720	0.039	44:CD	Constructed Ditch	1.0	62	62	0.001		
8:ES	Ephemeral Stream	3.0	6	18	<0.001	45:CD	Constructed Ditch	—	—	435	0.010		
9:CD	Constructed Ditch	1.5	170	255	0.006	46:IS	Intermittent Stream	—	—	21	<0.001		
10:CD	Constructed Ditch	1.5	287	431	0.010	47:CD	Constructed Ditch	1.5	231	347	0.008		
11:ES	Ephemeral Stream	2.0	2	4	<0.001	48:CD	Constructed Ditch	1.0	30	30	0.001		
12:CD	Constructed Ditch	1.5	495	743	0.017	49:IS	Intermittent Stream	—	—	256	0.006		
13:CD	Constructed Ditch	1.5	216	324	0.007	50:CD	Constructed Ditch	1.0	791	791	0.018		
14:CD	Constructed Ditch	1.0	182	182	0.004	51:ES	Ephemeral Stream	1.5	7	11	<0.001		
15:IS	Intermittent Stream	4.0	3	12	<0.001	52:CD	Constructed Ditch	2.0	42	84	0.002		
16:CD	Constructed Ditch	1.0	140	140	0.003	53:IS	Intermittent Stream	4.0	3	12	<0.001		
17:IS	Intermittent Stream	4.0	14	56	0.001	54:IS	Intermittent Stream	4.0	11	44	0.001		
18:CD	Constructed Ditch	1.0	193	193	0.004	55:CD	Constructed Ditch	1.0	564	564	0.013		
19:CD	Constructed Ditch	1.0	254	254	0.006	56:CD	Constructed Ditch	1.5	558	837	0.019		
20:CD	Constructed Ditch	1.0	92	92	0.002	57:CD	Constructed Ditch	1.0	232	232	0.005		
22:IS	Intermittent Stream	4.0	3	12	<0.001	58:CD	Constructed Ditch	1.0	85	85	0.002		
23:CD	Constructed Ditch	1.5	30	45	0.001	59:CD	Constructed Ditch	2.0	644	1,288	0.030		
24:CD	Constructed Ditch	2.0	164	328	0.008	60:IS	Intermittent Stream	1.0	307	307	0.007		
25:IS	Intermittent Stream	2.0	3	6	<0.001	61:CD	Constructed Ditch	2.0	18	72	0.002		
26:CD	Constructed Ditch	1.0	148	148	0.003	62:IS	Intermittent Stream	1.0	34	34	0.001		
27:CD	Constructed Ditch	1.0	285	285	0.007	63:CD	Constructed Ditch	1.5	88	132	0.003		
28:CD	Constructed Ditch	1.5	56	84	0.002	64:ES	Ephemeral Stream	1.5	88	132	0.003		
29:CD	Constructed Ditch	1.5	53	80	0.002	65:CD	Constructed Ditch	1.0	6	6	0.000		
30:CD	Constructed Ditch	1.0	591	591	0.014	66:CD	Constructed Ditch	1.2	320	384	0.009		
31:CD	Constructed Ditch	1.5	64	96	0.002	67:CD	Constructed Ditch	1.0	152	152	0.003		
32:CD	Constructed Ditch	1.0	34	34	0.001	68:ES	Ephemeral Stream	1.5	16	24	0.001		
33:CD	Constructed Ditch	1.0	80	80	0.002	69:CD	Constructed Ditch	1.0	231	231	0.005		
34:CD	Constructed Ditch	1.5	176	264	0.006	70:CD	Constructed Ditch	1.0	92	92	0.002		
35:CD	Constructed Ditch	1.0	35	35	0.001	Total Waters						22,273	0.509
36:CD	Constructed Ditch	2.0	111	222	0.005								

Old Oregon Trail

-122.317468
40.681431

Path: \\nas-enplan.enplan.local\share\comfiles\01-Jobs Active\032-65 PACE - Mt. Gate CSD Water System Improvements\3-Map Documents\Delin\Fig 6 Pot Waters of US DRAFT.mxd

1 inch = 200 feet

NAVD 1988

Boundaries are preliminary until verified by the Army Corps of Engineers and Regional Water Quality Control Board.

All depictions are approximate. Not a survey product.

02.18.21

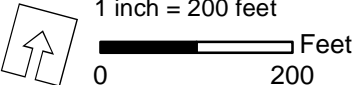
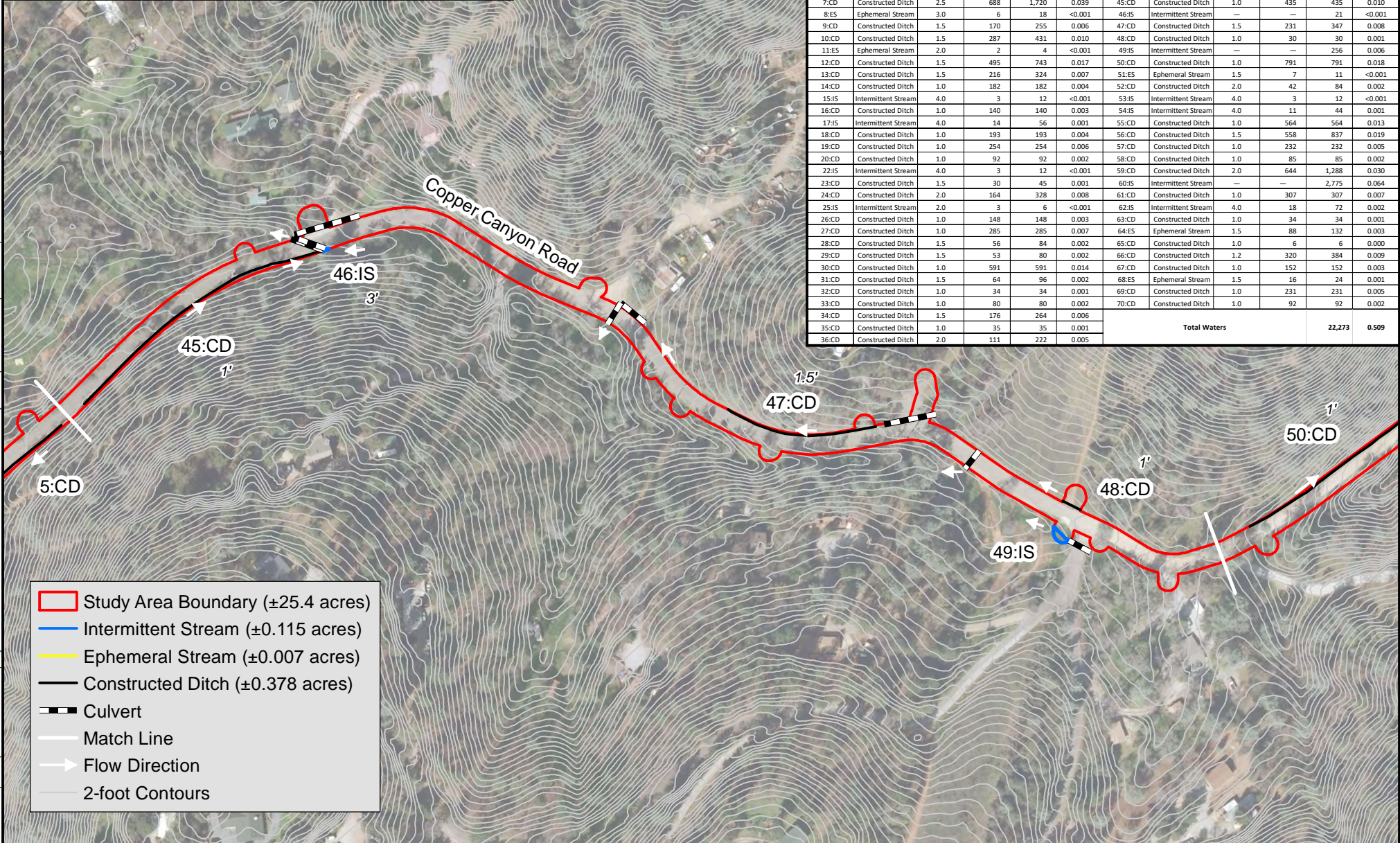


Figure 7
Waters of the U.S. and/or State

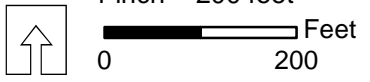
Project:	Mountain Gate Water System Improvements Project
Delineator:	John Luper
Date:	April 19 & 26; August 2, 2020
Date Revised:	February 28, 2021
Map Preparer:	Allison Loveless

Potential Waters by Map ID						Potential Waters by Map ID					
Map ID	Type	Average Width (feet)	Length (feet)	Area		Map ID	Type	Average Width (feet)	Length (feet)	Area	
				sq. ft.	acres					sq. ft.	acres
Wetlands						Other Waters					
21:SW	Seasonal Wetland	—	—	387	0.009	37:CD	Constructed Ditch	1.0	31	31	<0.001
Other Waters						Other Waters					
1:IS	Intermittent Stream	—	—	1,546	0.035	39:IS	Intermittent Stream	3.0	27	81	0.002
2:CD	Constructed Ditch	2.0	10	20	<0.001	40:CD	Constructed Ditch	1.0	26	26	<0.001
3:CD	Constructed Ditch	1.5	17	26	0.001	41:ES	Ephemeral Stream	2.0	73	146	0.003
4:CD	Constructed Ditch	1.0	290	290	0.007	42:IS	Intermittent Stream	4.0	33	132	0.003
5:CD	Constructed Ditch	2.0	852	1,704	0.039	43:CD	Constructed Ditch	1.0	259	259	0.006
6:CD	Constructed Ditch	2.0	772	1,544	0.035	44:CD	Constructed Ditch	1.0	62	62	0.001
7:CD	Constructed Ditch	2.5	688	1,720	0.039	45:CD	Constructed Ditch	1.0	435	435	0.010
8:ES	Ephemeral Stream	3.0	6	18	<0.001	46:IS	Intermittent Stream	—	—	21	<0.001
9:CD	Constructed Ditch	1.5	170	255	0.006	47:CD	Constructed Ditch	1.5	231	347	0.008
10:CD	Constructed Ditch	1.5	287	431	0.010	48:CD	Constructed Ditch	1.0	30	30	0.001
11:ES	Ephemeral Stream	2.0	2	4	<0.001	49:IS	Intermittent Stream	—	—	256	0.006
12:CD	Constructed Ditch	1.5	495	743	0.017	50:CD	Constructed Ditch	1.0	791	791	0.018
13:CD	Constructed Ditch	1.5	216	324	0.007	51:ES	Ephemeral Stream	1.5	7	11	<0.001
14:CD	Constructed Ditch	1.0	182	182	0.004	52:CD	Constructed Ditch	2.0	42	84	0.002
15:IS	Intermittent Stream	4.0	3	12	<0.001	53:IS	Intermittent Stream	4.0	3	12	<0.001
16:CD	Constructed Ditch	1.0	140	140	0.003	54:IS	Intermittent Stream	4.0	11	44	0.001
17:IS	Intermittent Stream	4.0	14	56	0.001	55:CD	Constructed Ditch	1.0	564	564	0.013
18:CD	Constructed Ditch	1.0	193	193	0.004	56:CD	Constructed Ditch	1.5	558	837	0.019
19:CD	Constructed Ditch	1.0	254	254	0.006	57:CD	Constructed Ditch	1.0	232	232	0.005
20:CD	Constructed Ditch	1.0	92	92	0.002	58:CD	Constructed Ditch	1.0	85	85	0.002
22:IS	Intermittent Stream	4.0	3	12	<0.001	59:CD	Constructed Ditch	2.0	644	1,288	0.030
23:CD	Constructed Ditch	1.5	30	45	0.001	60:IS	Intermittent Stream	—	—	2,775	0.064
24:CD	Constructed Ditch	2.0	164	328	0.008	61:CD	Constructed Ditch	1.0	307	307	0.007
25:IS	Intermittent Stream	2.0	3	6	<0.001	62:IS	Intermittent Stream	4.0	18	72	0.002
26:CD	Constructed Ditch	1.0	148	148	0.003	63:CD	Constructed Ditch	1.0	34	34	0.001
27:CD	Constructed Ditch	1.0	285	285	0.007	64:ES	Ephemeral Stream	1.5	88	132	0.003
28:CD	Constructed Ditch	1.5	56	84	0.002	65:CD	Constructed Ditch	1.0	6	6	0.000
29:CD	Constructed Ditch	1.5	53	80	0.002	66:CD	Constructed Ditch	1.2	320	384	0.009
30:CD	Constructed Ditch	1.0	591	591	0.014	67:CD	Constructed Ditch	1.0	152	152	0.003
31:CD	Constructed Ditch	1.5	64	96	0.002	68:ES	Ephemeral Stream	1.5	16	24	0.001
32:CD	Constructed Ditch	1.0	34	34	0.001	69:CD	Constructed Ditch	1.0	231	231	0.005
33:CD	Constructed Ditch	1.0	80	80	0.002	70:CD	Constructed Ditch	1.0	92	92	0.002
34:CD	Constructed Ditch	1.5	176	264	0.006						
35:CD	Constructed Ditch	1.0	35	35	0.001						
36:CD	Constructed Ditch	2.0	111	222	0.005						
Total Waters										22,273	0.509



- ▭ Study Area Boundary (±25.4 acres)
- ▬ Intermittent Stream (±0.115 acres)
- ▬ Ephemeral Stream (±0.007 acres)
- ▬ Constructed Ditch (±0.378 acres)
- Culvert
- ▬ Match Line
- ➔ Flow Direction
- ▬ 2-foot Contours

1 inch = 200 feet



NAVD 1988

Boundaries are preliminary until verified by the Army Corps of Engineers and Regional Water Quality Control Board. All depictions are approximate. Not a survey product.

02.18.21



Path: \\nas-enplan.local\shared\companyfiles\01-jobs\active\032-65 PACE - Mt. Gate CSD Water System Improvements\3-Map Documents\Delin\Fig 7 Pot Waters of US DRAFT.rxd

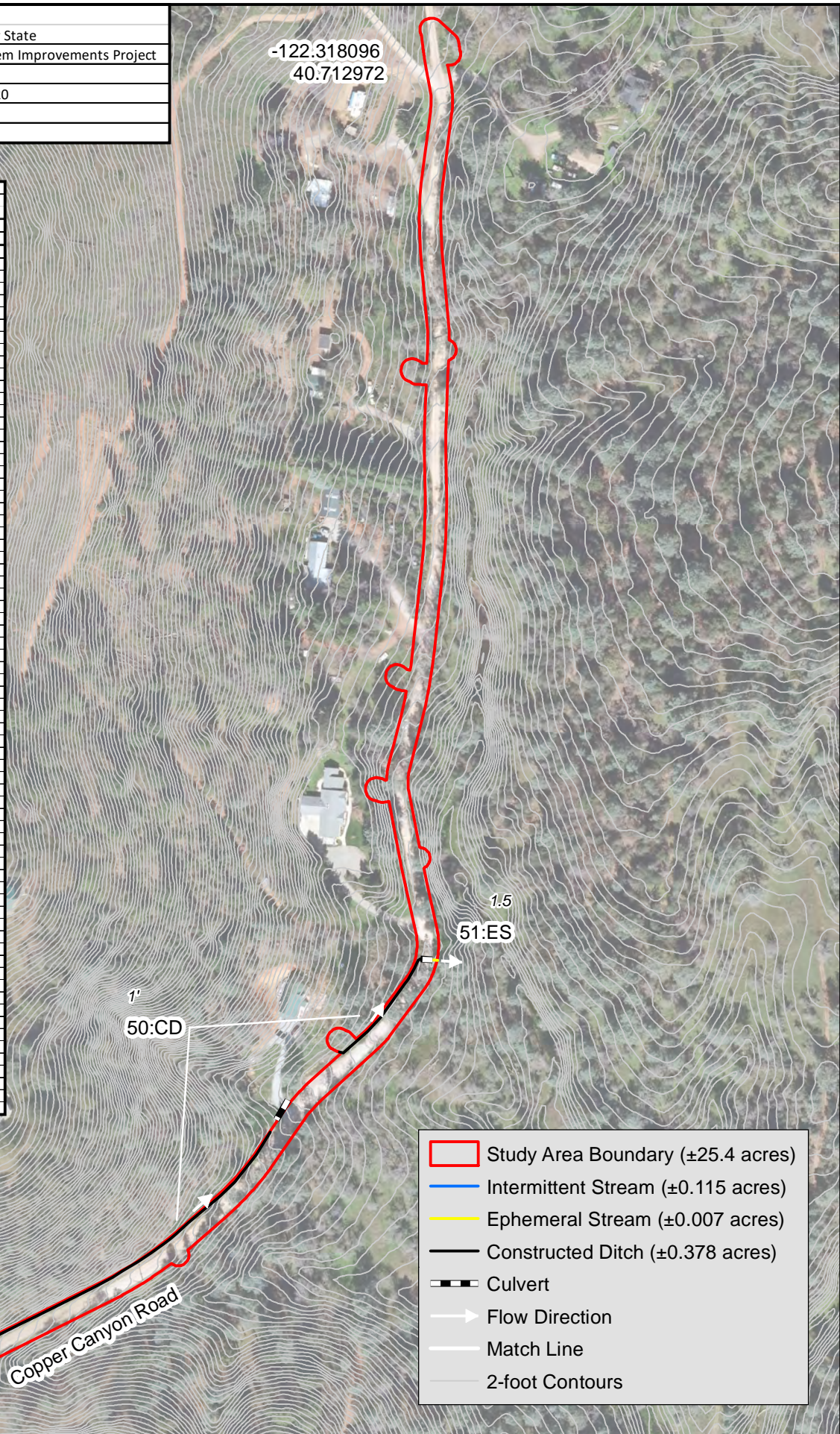
Figure 8

Waters of the U.S. and/or State

Project:	Mountain Gate Water System Improvements Project
Delineator:	John Luper
Date:	April 19 & 26; August 2, 2020
Date Revised:	February 28, 2021
Map Preparer:	Allison Loveless

-122.318096
40.712972

Potential Waters by Map ID					
Map ID	Type	Average Width (feet)	Length (feet)	Area	
				sq. ft.	acres
Wetlands					
21:SW	Seasonal Wetland	—	—	387	0.009
Other Waters					
1:IS	Intermittent Stream	—	—	1,546	0.035
2:CD	Constructed Ditch	2.0	10	20	0.000
3:CD	Constructed Ditch	1.5	17	26	0.001
4:CD	Constructed Ditch	1.0	290	290	0.007
5:CD	Constructed Ditch	2.0	852	1,704	0.039
6:CD	Constructed Ditch	2.0	772	1,544	0.035
7:CD	Constructed Ditch	2.5	688	1,720	0.039
8:ES	Ephemeral Stream	3.0	6	18	<0.001
9:CD	Constructed Ditch	1.5	170	255	0.006
10:CD	Constructed Ditch	1.5	287	431	0.010
11:ES	Ephemeral Stream	2.0	2	4	<0.001
12:CD	Constructed Ditch	1.5	495	743	0.017
13:CD	Constructed Ditch	1.5	216	324	0.007
14:CD	Constructed Ditch	1.0	182	182	0.004
15:IS	Intermittent Stream	4.0	3	12	<0.001
16:CD	Constructed Ditch	1.0	140	140	0.003
17:IS	Intermittent Stream	4.0	14	56	0.001
18:CD	Constructed Ditch	1.0	193	193	0.004
19:CD	Constructed Ditch	1.0	254	254	0.006
20:CD	Constructed Ditch	1.0	92	92	0.002
22:IS	Intermittent Stream	4.0	3	12	<0.001
23:CD	Constructed Ditch	1.5	30	45	0.001
24:CD	Constructed Ditch	2.0	164	328	0.008
25:IS	Intermittent Stream	2.0	3	6	<0.001
26:CD	Constructed Ditch	1.0	148	148	0.003
27:CD	Constructed Ditch	1.0	285	285	0.007
28:CD	Constructed Ditch	1.5	56	84	0.002
29:CD	Constructed Ditch	1.5	53	80	0.002
30:CD	Constructed Ditch	1.0	591	591	0.014
31:CD	Constructed Ditch	1.5	64	96	0.002
32:CD	Constructed Ditch	1.0	34	34	0.001
33:CD	Constructed Ditch	1.0	80	80	0.002
34:CD	Constructed Ditch	1.5	176	264	0.006
35:CD	Constructed Ditch	1.0	35	35	0.001
36:CD	Constructed Ditch	2.0	111	222	0.005
37:CD	Constructed Ditch	1.0	31	31	0.001
38:CD	Constructed Ditch	1.0	9	9	<0.001
39:IS	Intermittent Stream	3.0	27	81	0.002
40:CD	Constructed Ditch	1.0	26	26	0.001
41:ES	Ephemeral Stream	2.0	73	146	0.003
42:IS	Intermittent Stream	4.0	33	132	0.003
43:CD	Constructed Ditch	1.0	259	259	0.006
44:CD	Constructed Ditch	1.0	62	62	0.001
45:CD	Constructed Ditch	1.0	435	435	0.010
46:IS	Intermittent Stream	—	—	21	<0.001
47:CD	Constructed Ditch	1.5	231	347	0.008
48:CD	Constructed Ditch	1.0	30	30	0.001
49:IS	Intermittent Stream	—	—	256	0.006
50:CD	Constructed Ditch	1.0	791	791	0.018
51:ES	Ephemeral Stream	1.5	7	11	<0.001
52:CD	Constructed Ditch	2.0	42	84	0.002
53:IS	Intermittent Stream	4.0	3	12	<0.001
54:IS	Intermittent Stream	4.0	11	44	0.001
55:CD	Constructed Ditch	1.0	564	564	0.013
56:CD	Constructed Ditch	1.5	558	837	0.019
57:CD	Constructed Ditch	1.0	232	232	0.005
58:CD	Constructed Ditch	1.0	85	85	0.002
59:CD	Constructed Ditch	2.0	644	1,288	0.030
60:IS	Intermittent Stream	—	—	2,775	0.064
61:CD	Constructed Ditch	1.0	307	307	0.007
62:IS	Intermittent Stream	4.0	18	72	0.002
63:CD	Constructed Ditch	1.0	34	34	0.001
64:ES	Ephemeral Stream	1.5	88	132	0.003
65:CD	Constructed Ditch	1.0	6	6	<0.001
66:CD	Constructed Ditch	1.2	320	384	0.009
67:CD	Constructed Ditch	1.0	152	152	0.003
68:ES	Ephemeral Stream	1.5	16	24	0.001
69:CD	Constructed Ditch	1.0	231	231	0.005
70:CD	Constructed Ditch	1.0	92	92	0.002
Total Waters				22,273	0.509



- Study Area Boundary (±25.4 acres)
- Intermittent Stream (±0.115 acres)
- Ephemeral Stream (±0.007 acres)
- Constructed Ditch (±0.378 acres)
- Culvert
- Flow Direction
- Match Line
- 2-foot Contours

1 inch = 200 feet
0 200 Feet

Boundaries are preliminary until verified by the Army Corps of Engineers and Regional Water Quality Control Board. All depictions are approximate. Not a survey product. 02.18.21

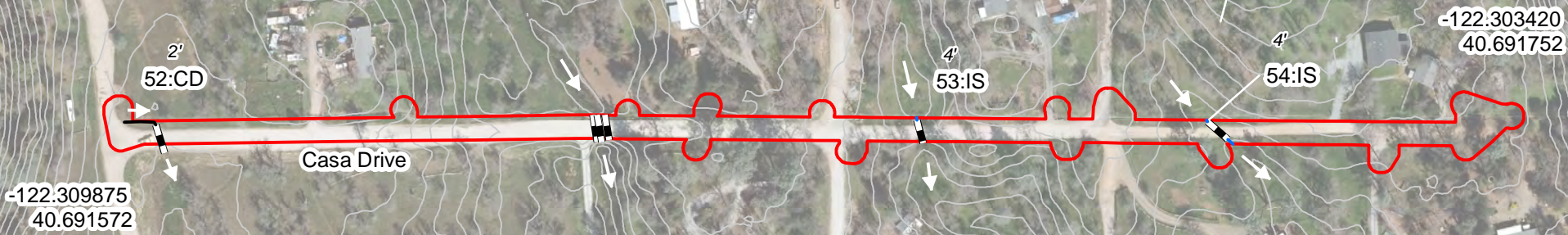


Path: \\nas-enplan.local\share\companyfiles\01-Jobs Active\032-65 PACE - Mt. Gate CSD Water System Improvements\3-Project GIS\3-Map Documents\Delin\Fig 8 Pot Waters of US DRAFT.mxd

Figure 9
Waters of the U.S. and/or State

Project: Mountain Gate Water System Improvements Project
 Delineator: John Luper
 Date: April 19 & 26; August 2, 2020
 Date Revised: February 28, 2021
 Map Preparer: Allison Loveless

Potential Waters by Map ID						Potential Waters by Map ID					
Map ID	Type	Average Width (feet)	Length (feet)	Area		Map ID	Type	Average Width (feet)	Length (feet)	Area	
				sq. ft.	acres					sq. ft.	acres
Wetlands						Other Waters					
21:SW	Seasonal Wetland	—	—	387	0.009	37:CD	Constructed Ditch	1.0	31	31	0.001
Other Waters						38:CD	Constructed Ditch	1.0	9	9	<0.001
1:IS	Intermittent Stream	—	—	1,546	0.035	39:IS	Intermittent Stream	3.0	27	81	0.002
2:CD	Constructed Ditch	2.0	10	20	<0.001	40:CD	Constructed Ditch	1.0	26	26	0.001
3:CD	Constructed Ditch	1.5	17	26	0.001	41:ES	Ephemeral Stream	2.0	73	146	0.003
4:CD	Constructed Ditch	1.0	290	290	0.007	42:IS	Intermittent Stream	4.0	33	132	0.003
5:CD	Constructed Ditch	2.0	852	1,704	0.039	43:CD	Constructed Ditch	1.0	259	259	0.006
6:CD	Constructed Ditch	2.0	772	1,544	0.035	44:CD	Constructed Ditch	1.0	62	62	0.001
7:CD	Constructed Ditch	2.5	688	1,720	0.039	45:CD	Constructed Ditch	1.0	435	435	0.010
8:ES	Ephemeral Stream	3.0	6	18	<0.001	46:IS	Intermittent Stream	—	—	21	<0.001
9:CD	Constructed Ditch	1.5	170	255	0.006	47:CD	Constructed Ditch	1.5	231	347	0.008
10:CD	Constructed Ditch	1.5	287	431	0.010	48:CD	Constructed Ditch	1.0	30	30	0.001
11:ES	Ephemeral Stream	2.0	2	4	<0.001	49:IS	Intermittent Stream	—	—	256	0.006
12:CD	Constructed Ditch	1.5	495	743	0.017	50:CD	Constructed Ditch	1.0	791	791	0.018
13:CD	Constructed Ditch	1.5	216	324	0.007	51:ES	Ephemeral Stream	1.5	7	11	<0.001
14:CD	Constructed Ditch	1.0	182	182	0.004	52:CD	Constructed Ditch	2.0	42	84	0.002
15:IS	Intermittent Stream	4.0	3	12	<0.001	53:IS	Intermittent Stream	4.0	3	12	<0.001
16:CD	Constructed Ditch	1.0	140	140	0.003	54:IS	Intermittent Stream	4.0	11	44	0.001
17:IS	Intermittent Stream	4.0	14	56	0.001	55:CD	Constructed Ditch	1.0	564	564	0.013
18:CD	Constructed Ditch	1.0	193	193	0.004	56:CD	Constructed Ditch	1.5	558	837	0.019
19:CD	Constructed Ditch	1.0	254	254	0.006	57:CD	Constructed Ditch	1.0	232	232	0.005
20:CD	Constructed Ditch	1.0	92	92	0.002	58:CD	Constructed Ditch	1.0	85	85	0.002
22:IS	Intermittent Stream	4.0	3	12	<0.001	59:CD	Constructed Ditch	2.0	644	1,288	0.030
23:CD	Constructed Ditch	1.5	30	45	0.001	60:IS	Intermittent Stream	—	—	2,775	0.064
24:CD	Constructed Ditch	2.0	164	328	0.008	61:CD	Constructed Ditch	1.0	307	307	0.007
25:IS	Intermittent Stream	2.0	3	6	<0.001	62:IS	Intermittent Stream	4.0	18	72	0.002
26:CD	Constructed Ditch	1.0	148	148	0.003	63:CD	Constructed Ditch	1.0	34	34	0.001
27:CD	Constructed Ditch	1.0	285	285	0.007	64:ES	Ephemeral Stream	1.5	88	132	0.003
28:CD	Constructed Ditch	1.5	56	84	0.002	65:CD	Constructed Ditch	1.0	6	6	0.000
29:CD	Constructed Ditch	1.5	53	80	0.002	66:CD	Constructed Ditch	1.2	320	384	0.009
30:CD	Constructed Ditch	1.0	591	591	0.014	67:CD	Constructed Ditch	1.0	152	152	0.003
31:CD	Constructed Ditch	1.5	64	96	0.002	68:ES	Ephemeral Stream	1.5	16	24	0.001
32:CD	Constructed Ditch	1.0	34	34	0.001	69:CD	Constructed Ditch	1.0	231	231	0.005
33:CD	Constructed Ditch	1.0	80	80	0.002	70:CD	Constructed Ditch	1.0	92	92	0.002
34:CD	Constructed Ditch	1.5	176	264	0.006						
35:CD	Constructed Ditch	1.0	35	35	0.001						
36:CD	Constructed Ditch	2.0	111	222	0.005						
Total Waters										22,273	0.509



- ▭ Study Area Boundary (±25.4 acres)
- Intermittent Stream (±0.115 acres)
- Ephemeral Stream (±0.007 acres)
- Constructed Ditch (±0.378 acres)
- Culvert
- ➔ Flow Direction
- 2-foot Contours

1 inch = 200 feet
 0 ————— 200 Feet

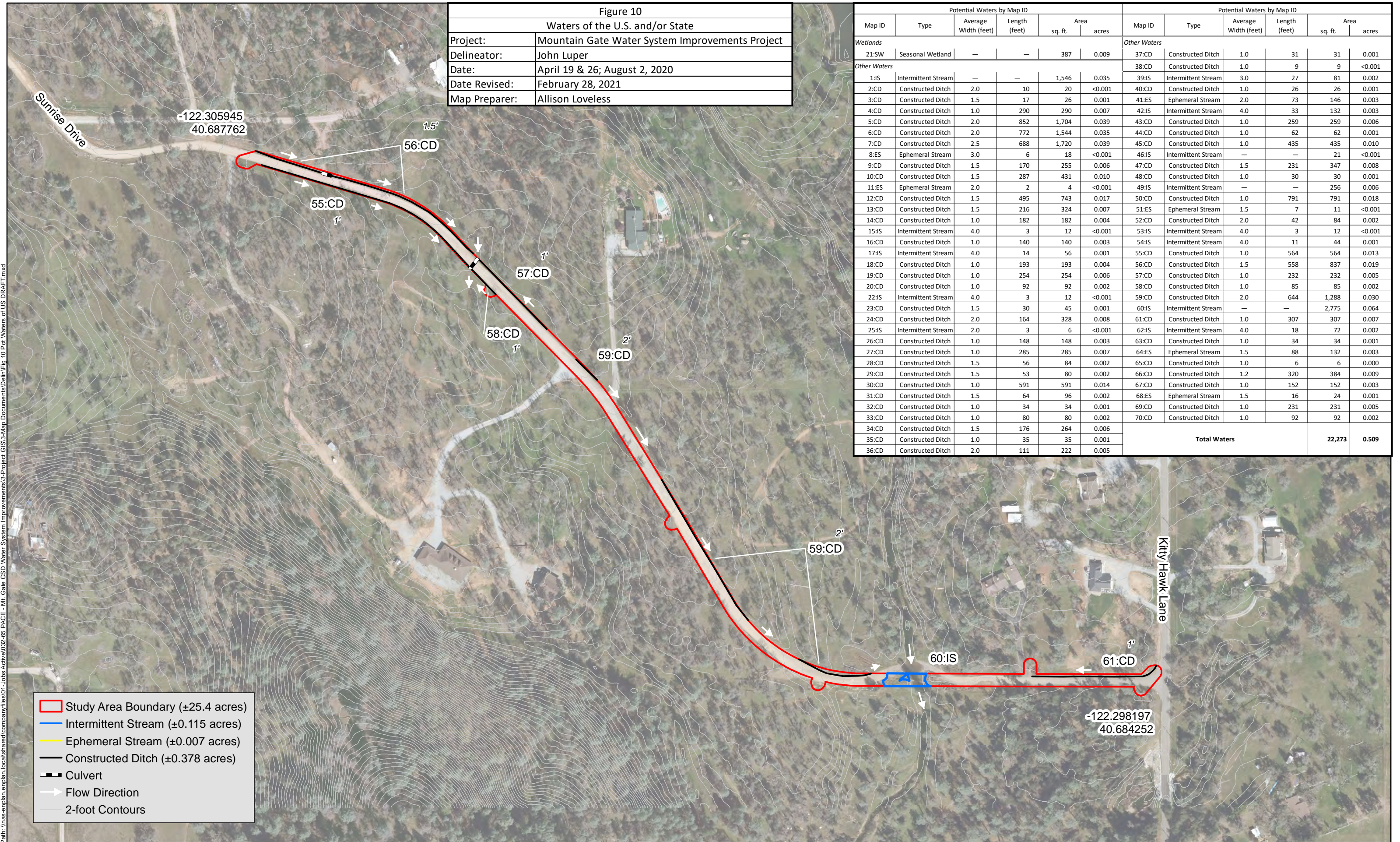
NAVD 1988 Boundaries are preliminary until verified by the Army Corps of Engineers and Regional Water Quality Control Board. All depictions are approximate. Not a survey product. 02.18.21



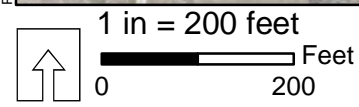
Path: \\nas-enplan.enplan.local\shared\companyfiles\01-jobs\active\032-65 PACE - Mt. Gate CSD Water System Improvements\3-Map Documents\Delim\Fig 9 Pot Waters of US DRAFT.mxd

Figure 10 Waters of the U.S. and/or State	
Project:	Mountain Gate Water System Improvements Project
Delineator:	John Luper
Date:	April 19 & 26; August 2, 2020
Date Revised:	February 28, 2021
Map Preparer:	Allison Loveless

Potential Waters by Map ID						Potential Waters by Map ID					
Map ID	Type	Average Width (feet)	Length (feet)	Area sq. ft.	Area acres	Map ID	Type	Average Width (feet)	Length (feet)	Area sq. ft.	Area acres
Wetlands						Other Waters					
21:SW	Seasonal Wetland	—	—	387	0.009	37:CD	Constructed Ditch	1.0	31	31	0.001
Other Waters						38:CD	Constructed Ditch	1.0	9	9	<0.001
1:IS	Intermittent Stream	—	—	1,546	0.035	39:IS	Intermittent Stream	3.0	27	81	0.002
2:CD	Constructed Ditch	2.0	10	20	<0.001	40:CD	Constructed Ditch	1.0	26	26	0.001
3:CD	Constructed Ditch	1.5	17	26	0.001	41:ES	Ephemeral Stream	2.0	73	146	0.003
4:CD	Constructed Ditch	1.0	290	290	0.007	42:IS	Intermittent Stream	4.0	33	132	0.003
5:CD	Constructed Ditch	2.0	852	1,704	0.039	43:CD	Constructed Ditch	1.0	259	259	0.006
6:CD	Constructed Ditch	2.0	772	1,544	0.035	44:CD	Constructed Ditch	1.0	62	62	0.001
7:CD	Constructed Ditch	2.5	688	1,720	0.039	45:CD	Constructed Ditch	1.0	435	435	0.010
8:ES	Ephemeral Stream	3.0	6	18	<0.001	46:IS	Intermittent Stream	—	—	21	<0.001
9:CD	Constructed Ditch	1.5	170	255	0.006	47:CD	Constructed Ditch	1.5	231	347	0.008
10:CD	Constructed Ditch	1.5	287	431	0.010	48:CD	Constructed Ditch	1.0	30	30	0.001
11:ES	Ephemeral Stream	2.0	2	4	<0.001	49:IS	Intermittent Stream	—	—	256	0.006
12:CD	Constructed Ditch	1.5	495	743	0.017	50:CD	Constructed Ditch	1.0	791	791	0.018
13:CD	Constructed Ditch	1.5	216	324	0.007	51:ES	Ephemeral Stream	1.5	7	11	<0.001
14:CD	Constructed Ditch	1.0	182	182	0.004	52:CD	Constructed Ditch	2.0	42	84	0.002
15:IS	Intermittent Stream	4.0	3	12	<0.001	53:IS	Intermittent Stream	4.0	3	12	<0.001
16:CD	Constructed Ditch	1.0	140	140	0.003	54:IS	Intermittent Stream	4.0	11	44	0.001
17:IS	Intermittent Stream	4.0	14	56	0.001	55:CD	Constructed Ditch	1.0	564	564	0.013
18:CD	Constructed Ditch	1.0	193	193	0.004	56:CD	Constructed Ditch	1.5	558	837	0.019
19:CD	Constructed Ditch	1.0	254	254	0.006	57:CD	Constructed Ditch	1.0	232	232	0.005
20:CD	Constructed Ditch	1.0	92	92	0.002	58:CD	Constructed Ditch	1.0	85	85	0.002
22:IS	Intermittent Stream	4.0	3	12	<0.001	59:CD	Constructed Ditch	2.0	644	1,288	0.030
23:CD	Constructed Ditch	1.5	30	45	0.001	60:IS	Intermittent Stream	—	—	2,775	0.064
24:CD	Constructed Ditch	2.0	164	328	0.008	61:CD	Constructed Ditch	1.0	307	307	0.007
25:IS	Intermittent Stream	2.0	3	6	<0.001	62:IS	Intermittent Stream	4.0	18	72	0.002
26:CD	Constructed Ditch	1.0	148	148	0.003	63:CD	Constructed Ditch	1.0	34	34	0.001
27:CD	Constructed Ditch	1.0	285	285	0.007	64:ES	Ephemeral Stream	1.5	88	132	0.003
28:CD	Constructed Ditch	1.5	56	84	0.002	65:CD	Constructed Ditch	1.0	6	6	0.000
29:CD	Constructed Ditch	1.5	53	80	0.002	66:CD	Constructed Ditch	1.2	320	384	0.009
30:CD	Constructed Ditch	1.0	591	591	0.014	67:CD	Constructed Ditch	1.0	152	152	0.003
31:CD	Constructed Ditch	1.5	64	96	0.002	68:ES	Ephemeral Stream	1.5	16	24	0.001
32:CD	Constructed Ditch	1.0	34	34	0.001	69:CD	Constructed Ditch	1.0	231	231	0.005
33:CD	Constructed Ditch	1.0	80	80	0.002	70:CD	Constructed Ditch	1.0	92	92	0.002
34:CD	Constructed Ditch	1.5	176	264	0.006						
35:CD	Constructed Ditch	1.0	35	35	0.001						
36:CD	Constructed Ditch	2.0	111	222	0.005						
Total Waters										22,273	0.509



Path: \\nas-enplan.local\shared\company\files\01-Jobs\Active\032-05 PACE - Mt. Gate CSD Water System Improvements\3-Project GIS\Map Documents\Delin\Fig 10 Pot Waters of US DRAFT.mxd



NAVD 1988 Boundaries are preliminary until verified by the Army Corps of Engineers and Regional Water Quality Control Board. Feature and boundary locations depicted are approximate only. This is not a survey product. 02.18.21



Potential Waters by Map ID					Potential Waters by Map ID						
Map ID	Type	Average Width (feet)	Length (feet)	Area		Map ID	Type	Average Width (feet)	Length (feet)	Area	
				sq. ft.	acres					sq. ft.	acres
Wetlands					Other Waters						
21:SW	Seasonal Wetland	—	—	387	0.009	37:CD	Constructed Ditch	1.0	31	31	0.001
Other Waters					Other Waters						
1:IS	Intermittent Stream	—	—	1,546	0.035	39:IS	Intermittent Stream	3.0	27	81	0.002
2:CD	Constructed Ditch	2.0	10	20	<0.001	40:CD	Constructed Ditch	1.0	26	26	0.001
3:CD	Constructed Ditch	1.5	17	26	0.001	41:ES	Ephemeral Stream	2.0	73	146	0.003
4:CD	Constructed Ditch	1.0	290	290	0.007	42:IS	Intermittent Stream	4.0	33	132	0.003
5:CD	Constructed Ditch	2.0	852	1,704	0.039	43:CD	Constructed Ditch	1.0	259	259	0.006
6:CD	Constructed Ditch	2.0	772	1,544	0.035	44:CD	Constructed Ditch	1.0	62	62	0.001
7:CD	Constructed Ditch	2.5	688	1,720	0.039	45:CD	Constructed Ditch	1.0	435	435	0.010
8:ES	Ephemeral Stream	3.0	6	18	<0.001	46:IS	Intermittent Stream	—	—	21	<0.001
9:CD	Constructed Ditch	1.5	170	255	0.006	47:CD	Constructed Ditch	1.5	231	347	0.008
10:CD	Constructed Ditch	1.5	287	431	0.010	48:CD	Constructed Ditch	1.0	30	30	0.001
11:ES	Ephemeral Stream	2.0	2	4	<0.001	49:IS	Intermittent Stream	—	—	256	0.006
12:CD	Constructed Ditch	1.5	495	743	0.017	50:CD	Constructed Ditch	1.0	791	791	0.018
13:CD	Constructed Ditch	1.5	216	324	0.007	51:ES	Ephemeral Stream	1.5	7	11	<0.001
14:CD	Constructed Ditch	1.0	182	182	0.004	52:CD	Constructed Ditch	2.0	42	84	0.002
15:IS	Intermittent Stream	4.0	3	12	<0.001	53:IS	Intermittent Stream	4.0	3	12	<0.001
16:CD	Constructed Ditch	1.0	140	140	0.003	54:IS	Intermittent Stream	4.0	11	44	0.001
17:IS	Intermittent Stream	4.0	14	56	0.001	55:CD	Constructed Ditch	1.0	564	564	0.013
18:CD	Constructed Ditch	1.0	193	193	0.004	56:CD	Constructed Ditch	1.5	558	837	0.019
19:CD	Constructed Ditch	1.0	254	254	0.006	57:CD	Constructed Ditch	1.0	232	232	0.005
20:CD	Constructed Ditch	1.0	92	92	0.002	58:CD	Constructed Ditch	1.0	85	85	0.002
22:IS	Intermittent Stream	4.0	3	12	<0.001	59:CD	Constructed Ditch	2.0	644	1,288	0.030
23:CD	Constructed Ditch	1.5	30	45	0.001	60:IS	Intermittent Stream	—	—	2,775	0.064
24:CD	Constructed Ditch	2.0	164	328	0.008	61:CD	Constructed Ditch	1.0	307	307	0.007
25:IS	Intermittent Stream	2.0	3	6	<0.001	62:IS	Intermittent Stream	4.0	18	72	0.002
26:CD	Constructed Ditch	1.0	148	148	0.003	63:CD	Constructed Ditch	1.0	34	34	0.001
27:CD	Constructed Ditch	1.0	285	285	0.007	64:ES	Ephemeral Stream	1.5	88	132	0.003
28:CD	Constructed Ditch	1.5	56	84	0.002	65:CD	Constructed Ditch	1.0	6	6	0.000
29:CD	Constructed Ditch	1.5	53	80	0.002	66:CD	Constructed Ditch	1.2	320	384	0.009
30:CD	Constructed Ditch	1.0	591	591	0.014	67:CD	Constructed Ditch	1.0	152	152	0.003
31:CD	Constructed Ditch	1.5	64	96	0.002	68:ES	Ephemeral Stream	1.5	16	24	0.001
32:CD	Constructed Ditch	1.0	34	34	0.001	69:CD	Constructed Ditch	1.0	231	231	0.005
33:CD	Constructed Ditch	1.0	80	80	0.002	70:CD	Constructed Ditch	1.0	92	92	0.002
34:CD	Constructed Ditch	1.5	176	264	0.006						
35:CD	Constructed Ditch	1.0	35	35	0.001						
36:CD	Constructed Ditch	2.0	111	222	0.005						
Total Waters									22,273	0.509	

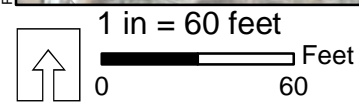
Figure 11 Waters of the U.S. and/or State	
Project:	Mountain Gate Water System Improvements Project
Delineator:	John Luper
Date:	April 19 & 26; August 2, 2020
Date Revised:	February 28, 2021
Map Preparer:	Allison Loveless



Path: \\nas-enplan.local\shared\company\files\01-Jobs\Active\032-05 PACE - Mt. Gate CSD Water System Improvements\3-Project_GIS\3-Map_Documents\Delin\Fig 11 Pot Waters of US DRAFT.mxd



- ▭ Study Area Boundary (±25.4 acres)
- ▬ Intermittent Stream (±0.115 acres)
- ▬ Ephemeral Stream (±0.007 acres)
- ▬ Constructed Ditch (±0.378 acres)
- Flow Direction
- Culvert
- ▬ 2-foot Contours



Boundaries are preliminary until verified by the Army Corps of Engineers and Regional Water Quality Control Board. Feature and boundary locations depicted are approximate only. This is not a survey product. 02.18.21

Figure 12 Waters of the U.S. and/or State	
Project:	Mountain Gate Water System Improvements Project
Delineator:	John Luper
Date:	April 19 & 26; August 2, 2020
Date Revised:	February 28, 2021
Map Preparer:	Allison Loveless

Potential Waters by Map ID						Potential Waters by Map ID					
Map ID	Type	Average Width (feet)	Length (feet)	Area		Map ID	Type	Average Width (feet)	Length (feet)	Area	
				sq. ft.	acres					sq. ft.	acres
Wetlands						Other Waters					
21:SW	Seasonal Wetland	—	—	387	0.009	37:CD	Constructed Ditch	1.0	31	31	0.001
Other Waters						38:CD	Constructed Ditch	1.0	9	9	<0.001
1:IS	Intermittent Stream	—	—	1,546	0.035	39:IS	Intermittent Stream	3.0	27	81	0.002
2:CD	Constructed Ditch	2.0	10	20	<0.001	40:CD	Constructed Ditch	1.0	26	26	0.001
3:CD	Constructed Ditch	1.5	17	26	0.001	41:ES	Ephemeral Stream	2.0	73	146	0.003
4:CD	Constructed Ditch	1.0	290	290	0.007	42:IS	Intermittent Stream	4.0	33	132	0.003
5:CD	Constructed Ditch	2.0	852	1,704	0.039	43:CD	Constructed Ditch	1.0	259	259	0.006
6:CD	Constructed Ditch	2.0	772	1,544	0.035	44:CD	Constructed Ditch	1.0	62	62	0.001
7:CD	Constructed Ditch	2.5	688	1,720	0.039	45:CD	Constructed Ditch	1.0	435	435	0.010
8:ES	Ephemeral Stream	3.0	6	18	<0.001	46:IS	Intermittent Stream	—	—	21	<0.001
9:CD	Constructed Ditch	1.5	170	255	0.006	47:CD	Constructed Ditch	1.5	231	347	0.008
10:CD	Constructed Ditch	1.5	287	431	0.010	48:CD	Constructed Ditch	1.0	30	30	0.001
11:ES	Ephemeral Stream	2.0	2	4	<0.001	49:IS	Intermittent Stream	—	—	256	0.006
12:CD	Constructed Ditch	1.5	495	743	0.017	50:CD	Constructed Ditch	1.0	791	791	0.018
13:CD	Constructed Ditch	1.5	216	324	0.007	51:ES	Ephemeral Stream	1.5	7	11	<0.001
14:CD	Constructed Ditch	1.0	182	182	0.004	52:CD	Constructed Ditch	2.0	42	84	0.002
15:IS	Intermittent Stream	4.0	3	12	<0.001	53:IS	Intermittent Stream	4.0	3	12	<0.001
16:CD	Constructed Ditch	1.0	140	140	0.003	54:IS	Intermittent Stream	4.0	11	44	0.001
17:IS	Intermittent Stream	4.0	14	56	0.001	55:CD	Constructed Ditch	1.0	564	564	0.013
18:CD	Constructed Ditch	1.0	193	193	0.004	56:CD	Constructed Ditch	1.5	558	837	0.019
19:CD	Constructed Ditch	1.0	254	254	0.006	57:CD	Constructed Ditch	1.0	232	232	0.005
20:CD	Constructed Ditch	1.0	92	92	0.002	58:CD	Constructed Ditch	1.0	85	85	0.002
22:IS	Intermittent Stream	4.0	3	12	<0.001	59:CD	Constructed Ditch	2.0	644	1,288	0.030
23:CD	Constructed Ditch	1.5	30	45	0.001	60:IS	Intermittent Stream	—	—	2,775	0.064
24:CD	Constructed Ditch	2.0	164	328	0.008	61:CD	Constructed Ditch	1.0	307	307	0.007
25:IS	Intermittent Stream	2.0	3	6	<0.001	62:IS	Intermittent Stream	4.0	18	72	0.002
26:CD	Constructed Ditch	1.0	148	148	0.003	63:CD	Constructed Ditch	1.0	34	34	0.001
27:CD	Constructed Ditch	1.0	285	285	0.007	64:ES	Ephemeral Stream	1.5	88	132	0.003
28:CD	Constructed Ditch	1.5	56	84	0.002	65:CD	Constructed Ditch	1.0	6	6	0.000
29:CD	Constructed Ditch	1.5	53	80	0.002	66:CD	Constructed Ditch	1.2	320	384	0.009
30:CD	Constructed Ditch	1.0	591	591	0.014	67:CD	Constructed Ditch	1.0	152	152	0.003
31:CD	Constructed Ditch	1.5	64	96	0.002	68:ES	Ephemeral Stream	1.5	16	24	0.001
32:CD	Constructed Ditch	1.0	34	34	0.001	69:CD	Constructed Ditch	1.0	231	231	0.005
33:CD	Constructed Ditch	1.0	80	80	0.002	70:CD	Constructed Ditch	1.0	92	92	0.002
34:CD	Constructed Ditch	1.5	176	264	0.006						
35:CD	Constructed Ditch	1.0	35	35	0.001						
36:CD	Constructed Ditch	2.0	111	222	0.005						
Total Waters										22,273	0.509

Study Area Boundary (±25.4 acres)

1 inch = 200 feet



NAVD 1988

Boundaries are preliminary until verified by the Army Corps of Engineers and Regional Water Quality Control Board. All depictions are approximate. Not a survey product.

02.18.21