

APPENDIX F
Hazardous Materials General Plan Review and
Environmental Evaluation Reports

LAND USE AND GENERAL PLAN REVIEW

**MOFFETT PARK SPECIFIC PLAN AREA
SUNNYVALE, CALIFORNIA**

**Submitted by:
Farallon Consulting, L.L.C.
330 Franklin Street, Suite 200
Oakland, California 94607**

Farallon PN: 2481-002

**For:
David J. Powers & Associates, Inc.
1871 The Alameda, Suite 200
San Jose, California 95126**

October 27, 2021

Prepared by:

Margie DeRose, P.G.
Compliance Specialist

Reviewed by:

James Schwartz, P.G.
Principal Geologist



TABLE OF CONTENTS

1.0	INTRODUCTION.....	1-1
1.1	OBJECTIVE	1-1
1.2	ORGANIZATION	1-1
2.0	ENVIRONMENTAL EVALUTION REPORT SUMMARY	2-1
3.0	CITY OF SUNNYVALE LAND USE AND GENERAL PLAN REVIEW..	3-1
4.0	RECOMMENDED MITIGATIONS	4-1
4.1	MITIGATION MEASURE 1 (MM-1) – COMPLETE A PHASE I ENVIRONMENTAL SITE ASSESSMENT	4-1
4.2	MITIGATION MEASURE 2 (MM-2) – PREPARE A SITE MANAGEMENT PLAN	4-1
4.3	MITIGATION MEASURE 3 (MM-3) – COMPLETE A PHASE II ENVIRONMENTAL SITE ASSESSMENT	4-2
4.4	MITIGATION MEASURE 4 (MM-4) – COMPLETE APPROPRIATE ENVIRONMENTAL REMEDIATION AND MANAGEMENT	4-2
4.5	MITIGATION MEASURE 5 (MM-5) – PREPARE A DEWATERING MANAGEMENT PLAN	4-3
5.0	APPLICATION OF MITIGATION MEASURES IN THE PLAN AREA..	5-1
6.0	CONCLUSIONS	6-1
7.0	LIMITATIONS.....	7-1
7.1	GENERAL LIMITATIONS	7-1
7.2	LIMITATION ON RELIANCE BY THIRD PARTIES	7-1

FIGURES

Figure 1	<i>Environmental Evaluation Report Risk Values</i>
Figure 2	<i>Proposed Moffett Park Specific Plan Land Uses</i>

TABLES

Table 1	<i>Environmental Evaluation Report Relative Risk Values</i>
Table 2	<i>Applicable Sunnyvale General Plan Policies</i>
Table 3	<i>Mitigation Measure Applicability</i>



1.0 INTRODUCTION

Farallon Consulting, L.L.C. (Farallon) prepared the *Environmental Evaluation Report, Moffett Park Specific Plan Area, Sunnyvale, California*, dated September 17, 2021, prepared by Farallon Consulting, L.L.C. (EE Report) for the Moffett Park Specific Plan Area (herein referred to as the Plan Area) in Sunnyvale, California. The Plan Area (Figure 1) encompasses approximately 1,200 acres and is bounded by Caribbean Drive to the north, Sunnyvale Baylands Park to the east, State Route 237 and Highway 101 to the south, and Moffett Federal Airfield to the west. Farallon conducted a review (herein referred to as the Review) of the existing Sunnyvale General Plan,¹ including the Moffett Park Specific Plan,² and proposed amendments to the Moffett Park Specific Plan (Figure 2).

The Moffett Park Specific Plan Area (Plan Area) is located at the southern end of San Francisco Bay on relatively flat bay margin land. Historically, this area was used for agriculture as early as the 1930s, followed by gradual development into commercial and industrial use during the 1960s, 1970s, and 1980s. The City of Sunnyvale (City) is developing a plan that will realign how this area is used and is considering additional uses in the amended Moffett Park Specific Plan.

This Review was conducted for David J. Powers & Associates, Inc. in accordance with the letter regarding Proposal for Environmental Evaluation, Moffett Park Specific Plan Area, Sunnyvale, California dated September 11, 2020, from Craig Ware and James Schwartz of Farallon to Kristy Weis of David J. Powers & Associates, Inc.

1.1 OBJECTIVE

The objective of this Review was to assess the applicability of existing and proposed land use and Sunnyvale General Plan policies regarding hazardous materials, EE Report conclusions, and recommend any environmental mitigation measures for the Plan Area to reduce potential impacts due to hazardous materials.

1.2 ORGANIZATION

This Review has been organized into the following sections:

- **Section 2, Environmental Evaluation Report Summary**, a summary of the EE Report dated September 17, 2021 prepared by Farallon for the Plan Area.
- **Section 3, City of Sunnyvale Land Use and General Plan Review**, summarizes land use and Sunnyvale General Plan policies as they relate to hazardous materials from the

¹ Sunnyvale General Plan, Sunnyvale, California, dated July 26, 2011, updated September 2021
<<https://sunnyvale.ca.gov/civicax/filebank/blobdload.aspx?BlobID=25317>>

² Moffett Park Specific Plan, Sunnyvale, California, no date, <<https://www.moffettparksp.com/>>



Sunnyvale General Plan, existing Moffett Park Specific Plan, and proposed amendments to the Moffett Park Specific Plan for the Plan Area.

- **Section 4, Recommended Mitigations**, provides recommended mitigation measures and applicability within the Plan Area to reduce potential impacts from hazardous materials based on the conclusions in the EE Report.
- **Section 5, Application of Mitigation Measures in the Plan Area**, provides recommendations for the application of specific mitigation measures in the Plan Area.
- **Section 6, Conclusions**, summarizes the conclusions of this Review.
- **Section 7, Limitations**, presents Farallon’s standard limitations applicable to this Review.



2.0 ENVIRONMENTAL EVALUTION REPORT SUMMARY

This section provides a summary of the EE Report. The EE Report is an evaluation of the current environmental property conditions within the Plan Area to inform future use planning. Farallon conducted an environmental database review, online repository research, aerial photograph review, and site reconnaissance. Farallon used the information collected and reviewed for the EE Report to assess the relative risk of environmental impacts on parcels within the Plan Area as shown on Figure 1. A summary of the relative risk values in the EE Report is shown in Table 1.

In addition, the EE Report noted the following potential environmental issues in the Plan Area:

- Widespread agricultural use of the Plan Area can be expected to result in the presence of pesticides and related metals in surface soil. If orchards and other row crops were present in the Plan Area, isolated releases of petroleum hydrocarbons related to use of heating equipment during cold weather also may have impacted surface soil.
- Widespread commercial and industrial use of the Plan Area can be expected to result in the presence of polycyclic aromatic hydrocarbons in surface soil. Polycyclic aromatic hydrocarbons are a general concern in regions with significant industrial activity and have been found extensively on land surrounding San Francisco Bay.

Prior to redevelopment of the Plan Area, Farallon recommends, at minimum, additional file review to further assess the potential extent of environmental impacts associated with historical releases of hazardous substances.



3.0 CITY OF SUNNYVALE LAND USE AND GENERAL PLAN REVIEW

Farallon conducted a review of the Sunnyvale General Plan, existing Moffett Park Specific Plan, and a land use map showing proposed amendments to the Moffett Park Specific Plan zoning (Figure 2). The documents were reviewed as they relate to hazardous materials policies and the EE Report conclusions for the Plan Area.

The General Plan includes policies for the purpose of avoiding or mitigating impacts resulting from planned development projects. The Plan Area would be subject to the General Plan hazards and hazardous materials policies as summarized in Table 2. The Moffett Park Specific Plan Area includes unique zoning guidelines separate from the General Plan policies. The proposed amendment to the Moffett Park Specific Plan includes modifications to zoning and land use as shown on Figure 2. Amendments to the land use and zoning policies have not yet been established for the Plan Area. Farallon’s Review considered existing land use and General Plan policies, proposed generalized zoning amendments, and the EE Report conclusions to develop recommended mitigation measures to reduce potential human or environmental exposure to hazardous materials.



4.0 RECOMMENDED MITIGATIONS

This section describes recommended mitigation measures as part of this Review. The results of the EE Report indicate that hazardous materials may be present in the Plan Area that could be disturbed during demolition, construction, or earthmoving activities. This disturbance could cause unacceptable exposure of humans and the environment to contaminated groundwater, soils, and soil gas. Farallon recommends implementation of environmental mitigation measures to reduce potential human or environmental exposure to hazardous materials.

Implementation of these environmental mitigation measures is recommended for changes in use, such as new development, additions, or redevelopment, regardless of existing or amended zoning. Professional evaluations, assessments, and plan preparation recommended as part of the mitigations should be performed by an Environmental Professional and submitted to the City and overseeing regulatory agency (e.g., U.S. Environmental Protection Agency, California Department of Toxic Substances Control (DTSC), San Francisco Bay Regional Water Quality Control Board (Water Board), Santa Clara County Department of Environmental Health (SCCDEH), or local oversight program) for review and approval. Documentation of a regulatory agency's approval or decision declining involvement in the project will be submitted to the City.

4.1 MITIGATION MEASURE 1 (MM-1) – COMPLETE A PHASE I ENVIRONMENTAL SITE ASSESSMENT

For any renovation, modification, or redevelopment of a property within the Plan Area that includes subsurface disturbance and requires City review, a current property-specific Phase I Environmental Site Assessment (ESA) will be completed in accordance with ASTM Standard Designation E 1527-13 (or the standard that is effective at the time the Phase I ESA is conducted) to identify Recognized Environmental Conditions, evaluate the property history, and establish if the property has been or is likely to have environmental impacts. The City or its designated environmental professional will review the Phase I ESA to determine if additional mitigation measures are required based on currently available information, which may supersede the designated property's risk value in the EE Report. A Phase I ESA report will be considered current if it was prepared within 180 days of submittal to the City.

4.2 MITIGATION MEASURE 2 (MM-2) – PREPARE A SITE MANAGEMENT PLAN

At properties with known or suspected minor environmental impacts that can be addressed safely and effectively during subsurface disturbance activities, a Site Management Plan will be prepared prior to development activities to establish management practices for handling contaminated soil, soil vapor, groundwater, or other materials during construction activities. Management of site risks during earthwork activities in areas where impacted soil, soil vapor, and/or groundwater are present or suspected, will be described. Worker training requirements and health and safety will



be described. The Site Management Plan will be reviewed and approved by a qualified environmental regulatory agency such as DTSC, Water Board, or SCCDEH

4.3 MITIGATION MEASURE 3 (MM-3) – COMPLETE A PHASE II ENVIRONMENTAL SITE ASSESSMENT

At properties with known or suspected environmental impacts that require additional investigation prior to subsurface disturbance activities, a Phase II ESA will be prepared and implemented prior to development activities to determine the nature and extent of impacts. The Phase II ESA will be reviewed and approved by a qualified environmental regulatory agency such as DTSC, Water Board, or SCCDEH. Consideration should be given to obtaining approval for an investigation plan from the oversight agency prior to conducting the Phase II investigation. The scope of work will include soil, groundwater, and/or soil vapor sampling in areas of potential concern to evaluate if mitigation measures are needed to protect the health and safety of property occupants and construction workers.

Field techniques that may be employed under this mitigation measure include but are not limited to:

- Drilling using methods such as direct-push, hollow-stem auger, vibrocore, air rotary, and mud rotary;
- Trenching, potholing, and excavating;
- Constructing temporary or permanent soil vapor or groundwater wells or sampling points;
- Profiling geologic, hydrologic, geophysical, and chemical parameters of the subsurface using invasive and noninvasive tools; and
- Collecting samples of soil, soil vapor, groundwater, sediment, indoor air, outdoor air, and other media of interest for laboratory analysis.

4.4 MITIGATION MEASURE 4 (MM-4) – COMPLETE APPROPRIATE ENVIRONMENTAL REMEDIATION AND MANAGEMENT

At properties with known environmental impacts that must be addressed to make the property compatible with its future use, appropriate remediation and/or management measures must be implemented under the oversight and to the satisfaction of a qualified environmental regulatory agency such as DTSC, Water Board, or SCCDEH. Remediation techniques may include but are not limited to excavation, extraction, bioremediation, oxidation, reduction, phytoremediation, and thermal treatment. Management measures may include engineering and administrative controls such as but not limited to impermeable surface caps, vapor intrusion mitigation systems, permeable reactive barriers, land use covenants, and deed restrictions.



Field techniques that may be employed under this mitigation measure include but are not limited to:

- Excavation, extraction, or removal of impacted material for off-site disposal or temporary on-site storage or treatment;
- Ex-situ (i.e., above ground) treatment of impacted material via physical and/or chemical processing; and
- In-situ (i.e., below ground) treatment of impacted material via intrusive physical and/or chemical processing.

These field techniques include those currently known and used (e.g., dig-and-haul, landfarming, groundwater and soil vapor extraction and treatment, subsurface injection, etc.) and those that will become state of the art in the future.

4.5 MITIGATION MEASURE 5 (MM-5) – PREPARE A DEWATERING MANAGEMENT PLAN

For proposed projects that require dewatering, a Dewatering Management Plan will be prepared to determine how the dewatering activities will affect local groundwater quality, especially regarding movement of known or interpolated contaminated groundwater plumes. The Dewatering Management Plan also will include protocols to evaluate extracted water quality and perform proper disposal of the water. Compliance with permitting requirements will be described if required by the disposal method. The Dewatering Management Plan will be prepared by a California Certified Hydrogeologist and approved by a qualified environmental regulatory agency such as DTSC, Water Board, or SCCDEH.



5.0 APPLICATION OF MITIGATION MEASURES IN THE PLAN AREA

This section describes recommended mitigation measures as part of this Review and their applicability, regardless of existing or amended zoning. The application of the proposed mitigation measures within the Plan Area is suggested for locations identified in the EE Report and for dewatering activities in any portion of the Plan Area. Under the oversight of appropriate regulatory agencies, the application of mitigations for investigation, mitigation, and remediation will be performed to the satisfaction of the appropriate agency with regulatory oversight responsibilities for the intended land use. Table 3 provides a summary of the application of each mitigation measure to assigned risk values of parcels in the EE Report (Figure 1).



6.0 CONCLUSIONS

The results of the EE Report indicate the potential for environmental issues from hazardous materials in the Plan Area, regardless of existing or proposed zoning. The application of recommended mitigation measures prior to implementation of project activities for changes in use, such as new development, additions, or redevelopment, will help to identify the presence of contaminated groundwater, soils, and soil gas and reduce the risk of exposure to humans and the environment.



7.0 LIMITATIONS

7.1 GENERAL LIMITATIONS

The conclusions contained in this assessment/review are based on professional opinions with regard to the subject matter. These opinions have been arrived at in accordance with currently accepted hydrogeologic, engineering, and land use planning standards and practices applicable to this location. The conclusions contained herein are subject to the following inherent limitations:

- **Accuracy of Information.** Farallon obtained, reviewed, and evaluated certain information used in this assessment from sources that were believed to be reliable. Draft information was provided to Farallon for review regarding proposed amendments to the Moffett Park Specific Plan. Farallon's conclusions, opinions, and recommendations are based in part on such information. Farallon's services did not include verification of its accuracy or authenticity. Should the information upon which Farallon relied prove to be inaccurate or unreliable, Farallon reserves the right to amend or revise its conclusions, opinions, and/or recommendations.
- **Reconnaissance and/or Characterization.** Farallon performed a reconnaissance and/or characterization of the Plan Area for the EE Report to document current conditions, which is considered as part of this assessment. Recommendations are made in this assessment based on conclusions made in the EE Report. In the EE Report, Farallon focused on areas deemed more likely to exhibit hazardous materials conditions. Contamination may exist in other areas of the Plan Area that were not investigated or were inaccessible. Mitigation measures are recommended to help facilitate further investigation where information may be lacking. Plan Area activities beyond Farallon's control could change at any time after the completion of this assessment.

For the foregoing reasons, Farallon cannot and does not warrant or guarantee that the Plan Area is free of hazardous or potentially hazardous substances or conditions, or that latent or undiscovered conditions will not become evident in the future. Farallon's observations, findings, and opinions can be considered valid only as of the date of the report.

This assessment has been prepared in accordance with the contract for services between Farallon and David J. Powers & Associates, Inc., and currently accepted industry standards. No other warranties, representations, or certifications are made.

7.2 LIMITATION ON RELIANCE BY THIRD PARTIES

Reliance by third parties is prohibited. This assessment has been prepared for the exclusive use of David J. Powers & Associates, Inc. to address the unique needs of specific plan development at a specific point in time. The City of Sunnyvale is recognized as an intended user of this report/assessment, subject to the same limitations as David J. Powers & Associates, Inc.



This is not a general grant of reliance. No one other than David J. Powers & Associates, Inc. may rely on this report unless Farallon agrees in advance to such reliance in writing. Any unauthorized use, interpretation, or reliance on this report/assessment is at the sole risk of that party and Farallon will have no liability for such unauthorized use, interpretation, or reliance.

FIGURES

LAND USE AND GENERAL PLAN REVIEW
Moffett Park Specific Plan Area
Sunnyvale, California

Farallon PN: 2481-002



LEGEND

- I NO LISTINGS; NO ADDRESS IDENTIFIED
- II LISTINGS FOR STORAGE OR HANDLING OF HAZARDOUS MATERIAL; LOW RISK DUE TO TYPE OF HAZMAT USED AT SITE, NO VIOLATIONS OR ONLY MINOR ADMINISTRATIVE VIOLATIONS (e.g. LACK OF SIGNATURE OR PROPER FILING)
- III LISTED FOR STORAGE OR HANDLING OF HAZARDOUS MATERIALS; LOW-MEDIUM RISK, FEW VIOLATIONS FOR HANDLING PRACTICES BUT RETURNED TO COMPLIANCE
- IV LISTED FOR STORAGE OR HANDLING OF HAZARDOUS MATERIALS; MEDIUM RISK, FEW VIOLATIONS FOR HANDLING PRACTICES BUT RETURNED TO COMPLIANCE;
- V HAZARDOUS MATERIALS INCLUDE HALOGENATED SOLVENTS
- VI KNOWN CONTAMINATION REGARDLESS OF STATUS
- Open Geotracker Listing
- Red Outline SITE BOUNDARY

NOTES:

1. ALL LOCATIONS ARE APPROXIMATE.
2. FIGURES WERE PRODUCED IN COLOR. GRAYSCALE COPIES MAY NOT REPRODUCE ALL ORIGINAL INFORMATION.



FARALLON
CONSULTING

Your Challenges. Our Priority. | farallonconsulting.com

Washington
Issaquah | Bellingham | Seattle

Oregon
Portland | Baker City

California
Oakland | Irvine

Drawn By: j Jones Checked By: GF Date: 10/26/2021

FIGURE 1

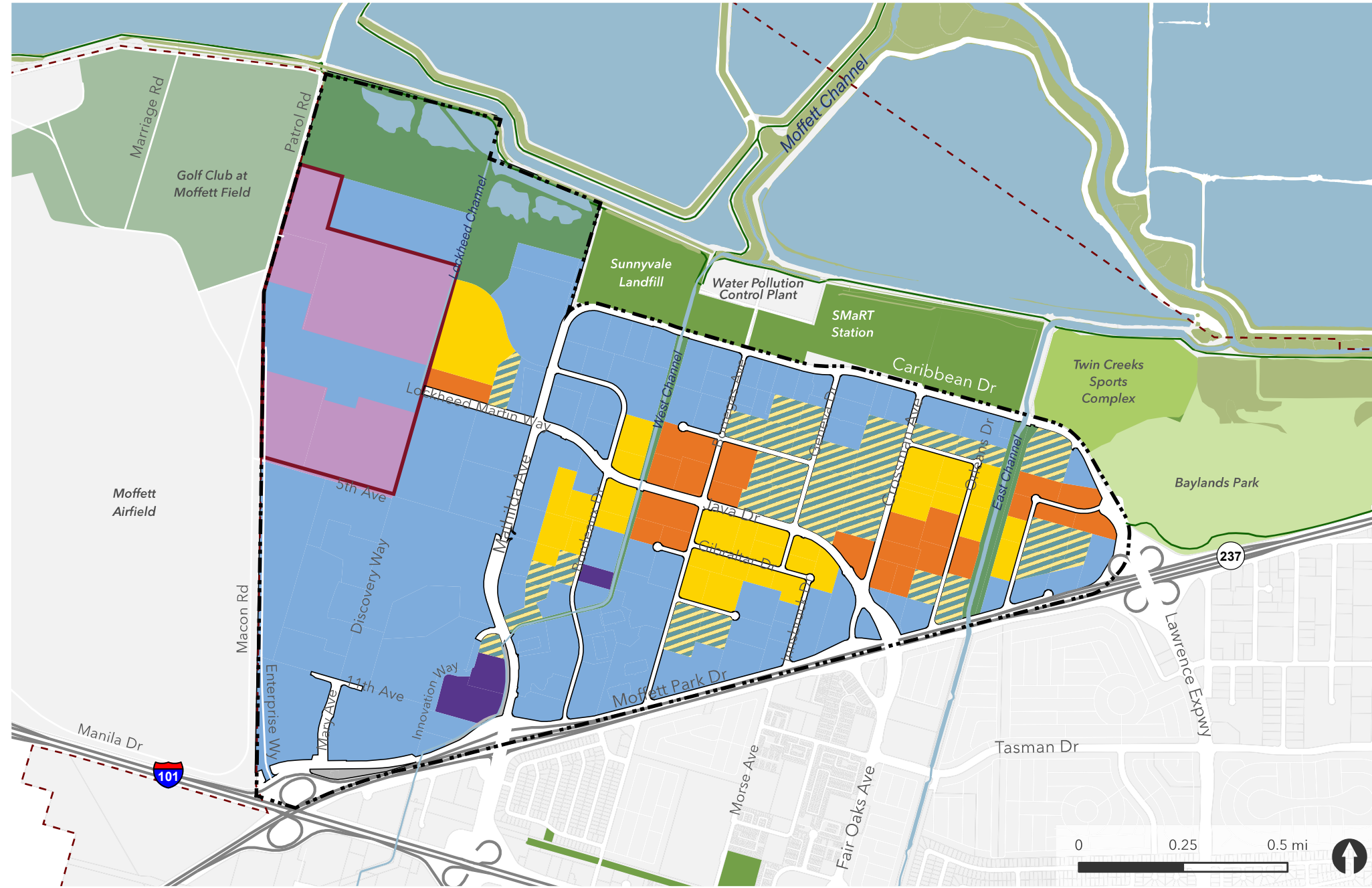
ENVIRONMENTAL EVALUATION REPORT RISK VALUES
MOFFETT PARK SPECIFIC PLAN AREA
SUNNYVALE, CALIFORNIA

FARALLON PN: 2481-002

Disc Reference:
Q:\Projects\2481 Moffett Park Specific Plan Area\000 Proposal\Mapfiles\005\Figure-01_parcels_w_Coloring_LandUse.mxd

Moffett Park Specific Plan Update: Alternative - Land Uses, Simplified

August 2021



- | | | |
|-------------------------|---------------------------|------------------------------|
| Specific Plan Boundary | Office/R+D | Ponds/Natural Areas/Channels |
| City of Sunnyvale Limit | Residential | Lockheed Martin Core Campus |
| Parcels | Residential or Office | Lockheed - Industrial |
| Freeways | Mixed-Use Activity Center | |
| Water/Creek | Institutional | |

Data Sources: City of Sunnyvale (2020); County of Santa Clara (2020); ESRI (2020)



Washington
Issaquah | Bellingham | Seattle

Oregon
Portland | Baker City

California
Oakland | Irvine

FARALLON
CONSULTING

Your Challenges. Our Priority. | farallonconsulting.com

FIGURE 2
PROPOSED MOFFETT PARK
SPECIFIC PLAN LAND USES
SUNNYVALE, CALIFORNIA

DRAFT

TABLES

**LAND USE AND GENERAL PLAN REVIEW
Moffett Park Specific Plan Area
Sunnyvale, California**

Farallon PN: 2481-002

Table 1
Environmental Evaluation Report Relative Risk Values
Moffett Park Specific Plan Area
Sunnyvale, California
Farallon PN: 2481-002

RELATIVE RISK VALUE	DESCRIPTION
I.	No listings; no address identified
II.	Listings for storage or handling of hazardous material; low risk due to type of hazardous materials used at site, no violations or only minor administrative violations (e.g., lack of signature or proper filing)
III.	Listed for storage or handling of hazardous materials; low to medium risk, few violations for handling practices but returned to compliance
IV.	Listed for storage or handling of hazardous materials; medium risk, few violations for handling practices but returned to compliance; hazardous materials include halogenated solvents
V.	Known contamination regardless of status

NOTE:

Refer to *Environmental Evaluation Report, Moffett Park Specific Plan Area, Sunnyvale, California*, dated September 17, 2021, prepared by Farallon Consulting, L.L.C. for information on how relative risk values were assigned.

Table 2
Applicable Sunnyvale General Plan¹ Policies
Moffett Park Specific Plan Area
Sunnyvale, California
Farallon PN: 2481-002

Policy	Description
Land Use and Transportation	
LT-14.5f	Rezone industrial sites for conversion to residential uses only after environmental remediation sufficient to enable residential use of the sites is completed and any deed restrictions are removed from subject properties. Such sites may be counted toward Regional Housing Needs Allocation obligations after environmental remediation is completed and any deed restrictions are removed.
LT-14.12	Recognize childcare and places of assembly as essential services and land uses that support the diverse needs of the community. Avoid locating these sensitive uses near hazardous materials, noise, dust, etc.
Safety and Noise	
SN-1.1	Evaluate and consider existing and potential hazards in developing land use policies. Make land use decisions based on an awareness of the hazards and potential hazards for the specific parcel of land.
SN-1.5	Promote a living and working environment safe from exposure to hazardous materials.
SN-1.7	Make planning decisions that establish and/or maintain a safe mix of aviation and land use for the areas affected by Moffett Federal Air Field.

¹ Sunnyvale General Plan, Sunnyvale, California, dated July 26, 2011, updated September 2021
<<https://sunnyvale.ca.gov/civicax/filebank/blobdload.aspx?BlobID=25317>>.

Table 3
Mitigation Measure Applicability
Moffett Park Specific Plan Area
Sunnyvale, California
Farallon PN: 2481-002

Mitigation Measure	Applicability				
	Risk Value I	Risk Value II	Risk Value III	Risk Value IV	Risk Value V
MM-1	X	X	X	X	X
MM-2			X	X	X
MM-3			X	X	X
MM-4					X
MM-5	X	X	X	X	X

NOTE:

Mitigation measures may include recommendations to implement additional mitigation measures if certain criteria are met.

ENVIRONMENTAL EVALUATION REPORT

MOFFETT PARK SPECIFIC PLAN AREA SUNNYVALE, CALIFORNIA

Submitted by:
Farallon Consulting, L.L.C.
330 Franklin Street, Suite 200
Oakland, California 94607

Farallon PN: 2481-002

For:
David J. Powers & Associates, Inc.
1871 The Alameda, Suite 200
San Jose, California 95126

November 10, 2021

Prepared by:

Kevin Halpin
Project Scientist

Gabi Ferreira
Project Geologist

Reviewed by:

James Schwartz, P.G.
Principal Geologist



TABLE OF CONTENTS

EXECUTIVE SUMMARY	iii
1.0 INTRODUCTION.....	1-1
1.1 OBJECTIVE	1-1
1.2 ORGANIZATION	1-1
2.0 ENVIRONMENTAL DATABASE REVIEW.....	2-1
2.1 DATABASE SOURCE AND SEARCH PARAMETERS.....	2-1
2.2 DATA ANALYSIS PROCESS	2-1
2.3 DATA SUMMARY	2-1
3.0 ONLINE REPOSITORY RESEARCH	3-1
3.1 GEOTRACKER.....	3-1
3.2 ENVIROSTOR	3-3
3.3 NAVY PUBLIC INFORMATION ACCESS.....	3-3
4.0 LAND USE RESEARCH	4-1
4.1 LAND USE RESTRICTION INFORMATION SOURCES	4-1
5.0 AERIAL PHOTOGRAPH REVIEW.....	5-1
5.1 PHOTOGRAPH SOURCE AND SEARCH PARAMETERS	5-1
5.2 PHOTOGRAPH ANALYSIS PROCESS	5-1
5.3 FINDINGS	5-1
5.3.1 General Review of Photographs	5-1
5.3.2 Notable Development Gaps	5-3
6.0 SITE RECONNAISSANCE.....	6-1
6.1 IDENTIFICATION OF INSPECTION SITES	6-1
6.2 FINDINGS	6-1
7.0 CONCLUSIONS AND RECOMMENDATIONS.....	7-1
8.0 REFERENCES.....	8-1
9.0 LIMITATIONS.....	9-1
9.1 GENERAL LIMITATIONS	9-1
9.2 LIMITATION ON RELIANCE BY THIRD PARTIES	9-1



FIGURE

Figure 1 *Moffett Park Specific Plan Area*

TABLES

Table 1 *Environmental Risk Review Summary*

Table 2 *Properties Requiring Further Evaluation*

APPENDICES

Appendix A *ERIS Historical Aerials, Moffett Park Specific Plan Area*

Appendix B *Site Reconnaissance Photolog*



EXECUTIVE SUMMARY

Farallon Consulting, L.L.C. (Farallon) has prepared this Environmental Evaluation Report (EE Report) for the Moffett Park Specific Plan Area (Plan Area) in Sunnyvale, California. The Plan Area encompasses approximately 1,200 acres and is bounded by State Route 237 and Highway 101 to the south, Moffett Federal Airfield to the west, Caribbean Drive to the north, and Sunnyvale Baylands Park to the east. This EE Report was prepared for David J. Powers & Associates, Inc. in accordance with the letter regarding Proposal for Environmental Evaluation, Moffett Park Specific Plan Area, Sunnyvale, California dated September 11, 2020, from Craig Ware and James Schwartz of Farallon to Kristy Weis of David J. Powers & Associates, Inc.

The EE Report is an evaluation of the current environmental property conditions within the Plan Area to inform future use planning. Farallon has conducted an environmental database review, online repository research, aerial photograph review, and site reconnaissance.

Farallon used the information collected and reviewed for this EE Report to assess the relative risk of environmental impacts existing on a given parcel. The cumulative results are shown on Figure 1 and Tables 1 and 2.

In addition, the following potential general Plan Area environmental issues were noted:

- Wide-spread agricultural use of the Plan Area can be expected to result in the presence of pesticides and related metals in surface soil. If orchards and other row crops were present in the Plan Area, isolated releases of petroleum hydrocarbons related to use of heating equipment during cold weather may have also impacted surface soil.
- Wide-spread commercial and industrial use of the Plan Area can be expected to result in the presence of polycyclic aromatic hydrocarbons (PAHs) in surface soil. PAHs are a general concern within regions with significant industrial activity and have been found extensively on land surrounding San Francisco Bay.

Prior to redevelopment, Farallon recommends additional file review to further assess the potential extent of environmental impacts associated with historical releases of hazardous substances at these specific sites:

- Former DII Orbit Semiconductor (1230 Bordeaux Drive);
- 1320-1322 Bourdoux (sic) Drive;
- AC Ball Menlo Caspian (141 Caspian Court);
- Lockheed Corporation (480 East Java Drive);
- Lockheed Sunnyvale – Plant One and Lockheed Corporation (1111 Lockheed Martin Way);

- Consolidated Freightways, Inc. (1319 Moffett Park Drive);
- Moffett Park Auto Center (1135 North Mathilda Avenue); and
- Onizuka Air Force Base (1080 Lockheed Martin Way).

Most of these sites are listed as ‘Completed – Case Closed’ on GeoTracker with the exception of Lockheed Sunnyvale – Plane One Facility (Open – Remediation), Lockheed Corporation (Informational Item), and Onizuka Air Force Base (Informational Item).



1.0 INTRODUCTION

Farallon Consulting, L.L.C. (Farallon) has prepared this Environmental Evaluation Report (EE Report) for the Moffett Park Specific Plan Area (herein referred to as the Plan Area) in Sunnyvale, California. The Plan Area (Figure 1) encompasses approximately 1,200 acres and is bounded by State Route 237 and Highway 101 to the south, Moffett Federal Airfield to the west, Caribbean Drive to the north, and Sunnyvale Baylands Park to the east. This EE Report was prepared for David J. Powers & Associates, Inc. in accordance with the letter regarding Proposal for Environmental Evaluation, Moffett Park Specific Plan Area, Sunnyvale, California dated September 11, 2020, from Craig Ware and James Schwartz of Farallon to Kristy Weis of David J. Powers & Associates, Inc.

The Plan Area is located at the southern end of San Francisco Bay on relatively flat, bay margin land. This area was historically used for agriculture as early as the 1930s, followed by gradual development into commercial and industrial use during the 1960s, 1970s, and 1980s. The City of Sunnyvale is developing a plan that will realign how this area is utilized and is considering residential use as part of the mix.

1.1 OBJECTIVE

The objective of this investigation was to evaluate the current environmental property conditions within the Plan Area to inform future use planning. To achieve these objectives, Farallon was commissioned to perform the following specific tasks:

- Environmental database review;
- GeoTracker, Envirostor, and Navy Public Information Access online repository research;
- Land use research;
- Aerial photograph review; and
- Site reconnaissance.

The nature of each these tasks and their outcomes are discussed in detail within this report.

1.2 ORGANIZATION

This EE Report has been organized into the following sections:

- **Section 2, Environmental Database Review**, describes the acquisition and review of a regulatory agency database report of public records for the Plan Area to evaluate potential impacts from reported contamination incidents.



- **Section 3, Online Repository Research**, describes the acquisition and review of selected data and documents obtained from GeoTracker,¹ Envirostor,² and Navy Public Information Access,³ the online repositories of environmental information maintained by the California State Water Resources Control Board, California Department of Toxic Substances Control, and U.S. Department of the Navy (Navy), respectively.
- **Section 4, Land Use Research**, describes the acquisition and review of land use restriction records available from the above online repositories and the Santa Clara County Recorder for properties within the Plan Area.
- **Section 5, Aerial Photograph Review**, describes the acquisition and review of readily available historical aerial photographs to evaluate past and current uses of the Plan Area that may be of environmental concern or note.
- **Section 6, Site Reconnaissance**, describes selected reconnaissance of the Plan Area conducted to note readily observable indications of hazardous materials releases to structures or the subsurface.
- **Section 7, Conclusions and Recommendations**, presents Farallon’s conclusions and recommendations based on the results.
- **Section 8, References**, lists the documents used in preparing this EE Report.
- **Section 9, Limitations**, presents Farallon’s standard limitations applicable to this EE Report.

¹ <https://geotracker.waterboards.ca.gov/>

² <https://www.envirostor.dtsc.ca.gov/public/>

³ https://www.enic.navy.mil/regions/cnsw/om/environmental_support/Public_Review_of_Navy_Projects.html



2.0 ENVIRONMENTAL DATABASE REVIEW

This section describes the acquisition and review of a regulatory agency database report of public records for the Plan Area to evaluate potential impacts from reported contamination incidents.

2.1 DATABASE SOURCE AND SEARCH PARAMETERS

Farallon contracted Environmental Risk Information Services (ERIS) to conduct a review of environmental regulatory agency database listings to identify reported environmental issues related to facilities in the Plan Area. Farallon reviewed the results from the *ERIS Database Report* prepared for the Site dated October 8, 2020 (ERIS Report) to note reported facilities within the boundaries of the Plan Area that were considered to have a potential to adversely impact the Site (i.e., are known to have resulted in or are expected to result in a release of hazardous materials to the subsurface).

2.2 DATA ANALYSIS PROCESS

Farallon reviewed all facilities in the Plan Area that were identified within the Plan Area. Property addresses for each parcel in the Plan Area as reported by the Office of the Assessor for Santa Clara County⁴ were compared to addresses identified in the ERIS Report. Reported facilities identified in the ERIS Report were evaluated with respect to the nature and extent of a given release, reported use of hazardous materials (e.g., halogenated or hydrocarbon solvents, waste oils, laboratory and photochemical wastes), age of reported listing, presence of subsurface features, and reported violations related to handling hazardous materials. Complete reference listings for the records and other information reviewed for this Environmental Evaluation are presented in Section 8.0, References.

2.3 DATA SUMMARY

The results from the environmental evaluation are summarized in Tables 1 and 2. Table 1 presents a preliminary risk evaluation of every property identified within the Plan Area. Qualitative risk assessments were performed for each property based on the criteria presented in Section 2.2., Data Analysis Process. The properties which were identified as moderate to higher risk were further evaluated in Table 2, which summarizes the nature of release (if reported) or basis for further evaluation.

⁴ <https://www.sccassessor.org/index.php/online-services/property-search/real-property>



3.0 ONLINE REPOSITORY RESEARCH

This section describes the acquisition and review of selected data and documents obtained from GeoTracker,⁵ Envirostor,⁶ and Navy Public Information Access,⁷ the online repositories of environmental information maintained by the California State Water Resources Control Board, California Department of Toxic Substances Control, and the Navy, respectively.

3.1 GEOTRACKER

Based on review of the GeoTracker map interface, 22 cases were identified within the Plan Area. The cases include three categories: Leaking Underground Storage Tank Cleanup Sites, Cleanup Program Sites, and Military Sites. Each of the three categories can be subdivided into “open” and “closed” cases, as determined by the California State Water Resources Control Board. Of the 22 facilities, four are listed as “open” while the remaining 18 are listed as “closed.” Parcels associated with the four open GeoTracker listings are outlined by a dashed yellow line on Figure 1. Below is a summary of each facility listed as “open” at the time of writing; the GeoTracker database listing number is provided in parentheses following each facility name:

Cleanup Program Sites:

- **Moffett Park Dr/ McCandless Dev, APN 11034006** (T10000008180), case open – inactive as of June 15, 2016. GeoTracker lists the potential contaminants of concern as “other chlorinated hydrocarbons” and the potential media of concern is “aquifer used for drinking water.” There is no site history listed on GeoTracker; however, the most recent report available is a groundwater monitoring report dated November 5, 2004 prepared by ATC Associates. The report states, “The subject site has historic use as a commercial office space since its development circa 1970. Prior to development, the site was agricultural or undeveloped since 1954.” The report noted that a scan for volatile organic compounds (VOCs) was conducted on soil from boring B-1 and three tentatively identified compounds were detected at very low concentrations. The first compound detected at 2.3 parts per billion (ppb) was unknown. The other two compounds detected at 1.1 and 1.2 ppb were 2,4-dimethyl-1-(1-methylpropyl)benzene and pentamethylbenzene, respectively.
- **Google Caribbean Campus, multiple APNs** (T10000011817), case open – verification monitoring as of March 11, 2019. GeoTracker lists the potential contaminants of concern as “1,4-dioxane, dichloroethane, dichloroethene, tetrachloroethylene (PCE), trichloroethylene (TCE), and vinyl chloride.” The potential media of concern is “other groundwater (uses other than drinking water), soil, and soil vapor.” GeoTracker describes the site’s history as follows: “The site was historically used for agricultural purposes until the late 1970s when the existing commercial buildings were constructed. Several tenants

⁵ <https://geotracker.waterboards.ca.gov/>

⁶ <https://www.envirostor.dtsc.ca.gov/public/>

⁷ https://www.cnrc.navy.mil/regions/cnrs/om/environmental_support/Public_Review_of_Navy_Projects.html



have occupied the properties with various uses including research and development, warehouse and storage, and light industrial. One tenant, A.C. Ball Company used VOCs in their operations. A Site Cleanup Case was overseen by the Regional Water Quality Control Board (Water Board) and closed in 2004 with residual contamination remaining beneath the site.” The facility reportedly comprises ten parcels across 40 acres.

- **Lockheed Sunnyvale - Plant One Facility, APNs 11001026, 11001025, 11002015, and 11002068 (SL1821F605),** case open – remediation as of March 12, 2009. GeoTracker lists the potential contaminants of concern as “1,1,1-trichloroethane, benzene, chromium, gasoline, nitrate, PCE, toluene, TCE, and xylene.” The potential media of concern is “other groundwater (uses other than drinking water).” GeoTracker describes the site’s history as, “Prior to 1956, the site location was farmland. Emplacement of the first Lockheed facilities began in 1956 with the construction of Building 103. Manufacturing operations began in 1958. By 1963, most of the Lockheed manufacturing and chemical processing facilities were in place. The site covers about 660 acres and historically included about 35 large buildings and structures used as research, testing, manufacturing, laboratory, and office facilities. The facility also included about 30 smaller, fixed buildings and mobile structures used for storage, maintenance, office, and covered workspace. Over the past few years, several buildings and structures have been demolished or decommissioned as portions of the site have been divested.”

Military Cleanup Sites:

Sunnyvale Naval Industrial Reserve Ordnance Plant, APN 11002015 (T0608576849), case open – remediation as of June 12, 2018. GeoTracker lists the potential contaminants of concern as “none specified” and the potential media of concern is “none specified.” GeoTracker describes the site’s history as, “The Sunnyvale Naval Industrial Reserve Ordnance Plant (NIROP) manufactured, assembled and tested ballistic missiles. Groundwater contamination has been identified in the area and is undergoing remediation by Lockheed Missiles and Space Company under the oversight of the San Francisco Bay Regional Water Quality Control Board.” This facility is located in the same area as the Lockheed Sunnyvale – Plant One Facility. Farallon was provided with the *Proposed Plan for Site 9 Groundwater, Naval Industrial Reserve Ordnance Plant, Sunnyvale California* dated December 2019 and notes summarizing a call dated August 24, 2020 between the City of Sunnyvale and Navy consultants. According to the information provided, the Water Board issued concurrence with the Final Proposed Plan in January 2020. The purpose of the plan is to conduct remedial action consisting of in-situ bioremediation and chemical reduction, in addition to groundwater monitoring and land use controls. The remedial action appears to be adequate to address the groundwater contamination; however, further review would be recommended to evaluate vapor intrusion risks and appropriate mitigation.

There are also four facilities listed on the ERIS Report that are identified as GeoTracker cases. These cases are summarized in Table 2: Onizuka Air Force Base and Lockheed Corporation (T10000007981). The Onizuka Air Force Base at 1080 Lockheed Martin Way, was listed as an Informational Item as of August 3, 2017. Based on a preliminary review of GeoTracker records,



at least three underground storage tanks (USTs) were removed from this facility prior to 1994. Impacted soil was removed from the facility as part of the UST removal. The UST files were closed in 1994. No other environmental impacts were identified in association with this listing.

The Lockheed Corporation (T10000007981) at 1111 Lockheed Martin Way, was listed as an Informational Item as of November 16, 2015. Based on a preliminary review of GeoTracker records, shallow soils appeared to be impacted by metals and VOCs. A soil remediation and management plan was prepared in 2017.

Farallon used the information collected and reviewed above to assess the relative risk of environmental impacts associated with the GeoTracker cases discussed above. The cumulative results are shown on Figure 1 and Table 2.

3.2 ENVIROSTOR

Sixty-five facilities were identified on the EnviroStor database. Of these 65 facilities, several were duplicate listings for multiple operators at the same address. A total of 47 of the listings were related to ongoing compliance associated with industrial operations. The remaining 18 listings were related to documented releases of hazardous substances to the subsurface, which are summarized in Table 2. Six of the 18 release listings are associated with the Lockheed Corporation facility at 1111 Lockheed Martin Way.

3.3 NAVY PUBLIC INFORMATION ACCESS

One facility was identified within the Plan Area on the Navy Public Information Access repository as the Naval Industrial Reserve Ordnance Plant (NIROP) at 1235 North Mathilda Avenue, Assessor Parcel Number 11002015. According to the draft *Environmental Assessment for Naval Industrial Reserve Ordnance Plan Land Exchange at Sunnyvale, California* dated September 2020, prepared by the Navy (Draft Environmental Assessment), proposes to carry out a land exchange between the Navy and an Exchange Partner. Through the exchange, the Navy would convey NIROP for replacement real property and facilities that meet the Navy's readiness requirements. It is anticipated that Lockheed Martin-owned property and privately developed facilities in Titusville, Florida would be provided as the exchange property.

Following the exchange of the properties and the facilities and the certification of use, the facilities would operate as government-owned, contractor-operated Fleet Ballistic Missile (FBM) design and production program. The purpose of the proposed land exchange is to ensure that the Navy continues to own the means of production needed to ensure the continued oversight of the FBM program. This "proposed action" is the Navy's response to Lockheed Martin Space's independent business decision to relocate the FBM design and production program from Sunnyvale, California to Titusville, Florida. The "no action alternative" would result in the Navy retaining the approximately 50-acre property within the Plan Area and relocate the FBM design and production program to Titusville, Florida but there would be no transfer of property or facilities in Titusville to the Navy in exchange for the Sunnyvale site.



The Draft Environmental Assessment evaluated the potential environmental impacts associated with the Proposed Action and the No Action Alternative and determined that the land exchange would have no to negligible impact to the following resource areas: Land Use, Hazardous Materials and Waste, Cultural Resources, Socioeconomics, Environmental Justice, Air Quality, Noise, Transportation, and Infrastructure.



4.0 LAND USE RESEARCH

This section describes the attempted acquisition and review of land use restriction records available from the above online repositories and the Office of the Santa Clara County Clerk-Recorder (Clerk-Recorder's Office) for properties within the Plan Area.

4.1 LAND USE RESTRICTION INFORMATION SOURCES

Land use restrictions are required to be filed with the Clerk-Recorder's Office. Copies of land use restrictions for sites with environmental issues may also be available on GeoTracker and Envirostor; posting of land use restriction documents is handled on a case-by-case basis by the regulatory case officers and is not consistent.

Farallon reviewed available deed records for the following sites, which were identified during the environmental database reviewed as suspect sites requiring further evaluation:

- Moffett Park Drive / McCandless Dev, 215 East Moffett Park Drive (APN 11034006)
- Lockheed Sunnyvale - Plant One Facility, 1111 Lockheed Martin Way (APNs 11001025, 11001026, 11002015, 11002068)
- Sunnyvale Naval Industrial Reserve Ordnance Plant, 1235 North Mathilda Avenue (APN 11002015)
- Vacant lot, 1350 Geneva Drive (APN 11032035)
- Vacant lot, 245 Caspian Drive (APN 11033037)
- Vacant lot, 1333 Bordeaux Drive (APN 11026033)
- Vacant lot, 1235 Bordeaux Drive (APN 11025044)
- DII Orbit Semiconductor (former), 1230 Bordeaux Drive (APN 11025027)
- AC Ball Menlo Caspian, 141 Caspian Court (APN 11026031)
- Consolidated Freightways, Inc., 1319 Moffett Park Drive (APN 11037006)

Farallon did not identify any deed restrictions related to environmental contamination for the above-listed sites.

In addition to reviewing files at the Clerk-Recorder's Office, Farallon reviewed available documents on GeoTracker and Envirostor for land use restrictions. No relevant documents were identified during the search.



5.0 AERIAL PHOTOGRAPH REVIEW

This section describes the acquisition and review of readily available historical aerial photographs to evaluate past and current uses of the Plan Area that may be of environmental concern or note.

5.1 PHOTOGRAPH SOURCE AND SEARCH PARAMETERS

Historical aerial photographs were provided to Farallon by ERIS based on a search of ERIS records for the Plan Area. ERIS completed the search of their records on October 8, 2020 and produced photos from the years 1939, 1948, 1954, 1960, 1968, 1974, 1982, 1991, 2003, 2004, 2005, 2006, 2009, 2010, 2012, 2014, 2016, 2018, and 2020. Original sources of the photos include the National Agriculture Information Program, United States Geological Survey, National High Altitude Photography, Army Mapping Service, Agriculture and Soil Conservation Service, and an unspecified private company. Copies of the photographs are included in Appendix A.

5.2 PHOTOGRAPH ANALYSIS PROCESS

Historical aerial photographs were reviewed in chronological order to identify property uses which may have had an environmental impact. Given the size of the Plan Area and the resolution of many older photographs, it was difficult to positively identify relatively small objects of interest such as 55-gallon drums, low-capacity aboveground storage tanks, and distressed vegetation.

5.3 FINDINGS

5.3.1 General Review of Photographs

Overall Plan Area conditions in each historical aerial photograph are described below.

- **1939** – The entire Plan Area is being used for agricultural purposes. Isolated farmhouses and agricultural structures are visible along southern and western edges.
- **1948** – The Plan Area continues to be used for agricultural purposes. Additional farmhouses and agricultural structures are visible in the eastern interior.
- **1954** – No significant changes are visible relative to land uses and structures in 1948.
- **1960** – Wide-spread agricultural use within eastern two-thirds of the Plan Area continues. Industrial development west of present-day North Mathilda Avenue, including several large-footprint buildings with surrounding parking, is visible in the western third of the Plan Area.
- **1968** – Wide-spread agricultural use within eastern two-thirds of the Plan Area continues. Industrial development west of present-day North Mathilda Avenue seen in the 1960 photograph has expanded further to the west and north, including several additional large-footprint buildings with surrounding parking.



- **1974** – The balance between industrial and agricultural uses within the Plan Area is now roughly equal, with industry on the western side and agriculture on the eastern side. Some of the new buildings constructed around the periphery of the core industrial area are smaller and appear to be offices or light industrial.
- **1982** – Commercial and industrial development of Plan Area is nearly complete; very little agricultural use remains. New buildings east of North Mathilda Avenue are within a fairly narrow range of sizes. These new buildings are still relatively large, but not as large as the industrial buildings west of North Mathilda Avenue. The sizes and configurations of these buildings indicate the eastern portion of the Project Area has become predominated by office, light industrial, and research and development uses. The configuration of major and most minor streets in 1982 matches the present-day layout.
- **1991** – No significant changes are visible relative to land uses and structures in 1982.
- **2003** – Minor redevelopment is visible on the western side of the Plan Area, but otherwise the Plan Area appears very similar to the 1991 photograph.
- **2004, 2005, 2006 and 2010** – No significant changes are visible relative to land uses and structures in 2003.
- **2012** – The industrial area in the southwestern portion of Plan Area has been redeveloped into offices. Otherwise, the Plan Area appears very similar to the 2003 to 2010 photographs.
- **2014, 2016, 2018 and 2020** – No significant changes are visible relative to land uses and structures in 2012.

Based on the general review, the following potential environmental issues were noted:

- Wide-spread agricultural use of the Plan Area can be expected to result in the presence of pesticides and related metals in surface soil. If orchards and other row crops were present in the Plan Area, isolated releases of petroleum hydrocarbons related to use of heating equipment during cold weather may have also impacted surface soil.
- Wide-spread commercial and industrial use of the Plan Area can be expected to result in the presence of polycyclic aromatic hydrocarbons (PAHs) in surface soil. PAHs are a general concern within regions with significant industrial activity and have been found extensively on land surrounding San Francisco Bay. PAHs are a class of chemicals that occur naturally in gasoline, crude oil, and coal. They are produced when gas, oil, coal, wood, garbage, and tobacco are burned.⁸

The impacts discussed above are unlikely to pose a significant risk to workers in the current configuration of the Plan Area given the predominance of soil coverings such as buildings and hardscape. However, consideration should be given to assessing potential environmental impacts

⁸ https://www.cdc.gov/biomonitoring/PAHs_FactSheet.html



to surface soil from agricultural use and PAHs during redevelopment projects, especially for sites with residential or other sensitive uses such as childcare or medical facilities.

Farallon also recommends the detailed history of individual properties be reviewed on a case-by-case basis prior to redevelopment to identify specific issues that would not be discernible from a high-level review such as this one.

5.3.2 Notable Development Gaps

The Plan Area has been densely developed since the 1980s; as a result, properties that have subsequently remained vacant for significant periods are potentially indicative of an unresolved environmental issue preventing development. The properties with notable development gaps since the 1980s include the following:

- **East side of Geneva Drive between East Caribbean Drive and Caspian Drive** – There is a building present at this location in photographs ranging from 1991 to 2010. The building is missing from the 2012 photograph and instead there are indications of possible earthwork. This location has remained vacant since 2012.

This location appears to correlate to the address 1350 Geneva Drive and APN 11032035. Netapp Inc. was listed on the ERIS Report for the address 1350 Geneva Drive in 2011. According to the ERIS Report, operations at the facility formerly included use or disposal of waste oil and mixed oil; off-specification, aged, or surplus organics; and other organic solids. No other environmental listings were identified in connection with this location.

- **Center of block bounded by East Caribbean Drive, Borregas Drive, Caspian Drive and Geneva Drive** – This location has no history of structures but has been surrounded by commercial and/or industrial buildings since at least 1982. There have been no changes to surrounding buildings since 1982. The location appears to correlate to the address 245 Caspian Drive and APN 11033037.

This location is adjacent to listed facilities at 255 Caspian Drive; 265 Caspian Drive; 1380 Borregas Avenue; 1376 Borregas Avenue; 1366 Borregas Avenue; 1390 Borregas Avenue; 1398 Borregas Avenue; 250 East Caribbean Drive; 230 East Caribbean Drive; 232 East Caribbean Drive; 238 Caribbean Drive; and 240 East Caribbean Drive. None of the facilities identified immediately adjacent to this location were associated with a reported release of hazardous materials to the subsurface although several of the adjacent facilities had environmental listings for the storage, use, and disposal of hazardous materials.

- **Intersection of Bordeaux Drive and West Java Drive, Northwest and Southwest Corners** – There are a trio of commercial and/or industrial buildings, one south of West Java Drive and two north of West Java Drive, present in photographs ranging from 1982 to 2004. In 2005, the photograph shows the two northern buildings removed; these northern lots have been vacant since 2005. In 2018, the photograph shows the southern building has also been removed; the southern lot has remained vacant since 2018.



The two northern buildings appear to be historically associated with addresses 399 West Java Drive (APN 11026047) and 1333 Bordeaux Drive (APN 11026033). The building south of West Java Drive appears to be associated with the address 1235 Bordeaux Drive (APN 11025044). Former occupants of 1235 Bordeaux Drive listed in the ERIS Report are Supertex Inc; Lockheed Missiles & Space Co; and Disonics, Inc. Former occupants of 399 West Java Drive listed in the ERIS Report are ILC Technology, Perkin Elmer ILC, and Perkin Elmer Optoelectronics, and are listed from 1982 to 2002. The former occupant of 1333 Bordeaux Drive listed in the ERIS Report is Higgins Developmental Partners LLC, which was listed only in 2002 for disposal of asbestos-containing waste, likely associated with demolition of the building. The listings associated with all three locations were primarily for the storage, use, and disposal of hazardous materials. None of the facilities listed in association with these locations were associated with a reported release of hazardous materials to the subsurface.

A facility east of this location, at 1320 and 1322 Bordeaux Drive, was listed on Geotracker due to a detected release of PCE. The source of PCE was unknown and presumed to migrate from an upgradient location. The location is also east-adjacent of a large military facility associated with four separate cleanup records, under the address 1111 Lockheed Martin Way.

Further file review is recommended to determine if the undeveloped area is impacted by any known releases of hazardous substances.

- **Former Industrial Area Northeast of E Street and 11th Avenue** – This was the first portion of the Plan Area to be developed industrially as seen in the 1960 photograph. The configuration of buildings remained largely unchanged until 2009 when demolition of the buildings in this area commenced; the demolition and redevelopment process can be seen in the 2010 and 2012 photographs. Despite the redevelopment, several portions of this area have remained vacant since 2012.

This location was historically within the boundaries of a Lockheed Martin facility associated with APN 11002068; referred to as the Plant One Facility and associated with a cleanup file. The Plant One Facility is impacted by a release of chlorinated solvents to groundwater and undergoing active remediation since discovery in 1987. Further file review is recommended to determine if the undeveloped area is impacted by any known releases of hazardous substances.



6.0 SITE RECONNAISSANCE

This section describes selected reconnaissance of the Plan Area conducted to note readily observable indications of hazardous materials releases to structures or the subsurface.

6.1 IDENTIFICATION OF INSPECTION SITES

The sites that were deemed suitable for inspection were those identified as having had known releases from the list of moderate to higher risk properties identified in Table 2. In addition to the 17 facilities identified in Table 2, Farallon also inspected the four properties identified from historical aerial photograph analysis listed in Section 5.3.2 that have remained undeveloped since the 1980s.

6.2 FINDINGS

Farallon conducted the site reconnaissance on February 18, 2021, by driving to each property and inspecting the property by foot, where accessible. A photolog of the site reconnaissance is included in Appendix B.

- **1111 Lockheed Martin Way and 1235 North Mathilda Avenue** (APNs 11001026, 11001025, 11002015, and 11002068) – Farallon was not granted access to the Lockheed Martin facility and was not able to inspect the properties associated with these addresses.
- **1135 North Mathilda Avenue** (APNs 11027029, 11027004, and portion of 11002068) – This address is now a grass park with a concrete walking path associated with the Juniper Networks buildings at 1133 Innovation Way (Photograph 1). The east portion of the grass park appears to be associated with APN 11027029, which had a reported release
- **1194 North Mathilda Avenue** (APNs 11025057 and 11025058)– This address is not listed on GeoTracker or EnviroStor. This location has been redeveloped and is currently occupied by Google Building 1194 (Photograph 2).
- **1230 Bordeaux Drive** (APN 11025027) – This address is listed as DII Orbit Semiconductor (former) (SL1823J1134) on GeoTracker and appears to be owned or operated by Panorama Research Inc. The building associated with the address appears to contain a possible groundwater treatment enclosure, most likely associated with the minor concentrations of PCE that migrated from an upgradient source that impacted a tidal stream approximately 100 feet from the building (Photograph 3).
- **1319 Moffett Park Drive** (APN 11037006) – This address is listed as Consolidated Freightways, Inc. (T0608500454) on GeoTracker and the building is now owned or operated by Bay Area Furniture Bank. Three USTs were removed from this property in 1989 following the discovery of a release of gasoline due to unknown circumstances. The building is marked with several hazardous material classification signs indicating fire hazards with flashpoints below 100° Fahrenheit. The north face of the building contains several rolling doors associated with the delivery or shipping of materials (Photograph 4).



- **1320 Bordeaux Drive** (APN 11026024)– This address is listed as 1320-1322 Bourdoux (sic) Drive (SL0608552478) on GeoTracker and the building is currently owned or operated by Infinera Corporation. The east side of the building contains several enclosures possibly related to a groundwater treatment system associated with minor concentrations of PCE that migrated onto the property from an upgradient source (Photograph 5).
- **141 Caspian Court** (APN 11026031) – This address is listed as AC Ball Menlo Caspian (T0608591628) on GeoTracker and is currently under development. The development at this address is also associated with a much larger developmental area spanning between Borregas Avenue to the east, Bordeaux Drive to the west, Caspian Court to the south, and West Caribbean Parkway to the north. Historic operations at this address included aluminum finishing, vapor degreasing, painting, welding, assembly, and testing of materials. A leaking UST released chlorinated solvents to soil and groundwater during site operations (Photograph 6).
- **165 Gibraltar Court** (APN 11035004) – This address is listed as Pan American Savings (T0608591767) on GeoTracker and the location has been redeveloped recently as a commercial office building. There were no indications of a release to the subsurface (Photograph 7).
- **215 East Moffett Park Drive** (APN 11034006) – This address is not listed on GeoTracker or EnviroStor and the location has been recently redeveloped as a commercial office building. There were no indications of a release to the subsurface (Photograph 8).
- **480 East Java Drive** (APN 11034026) – This address is listed on GeoTracker as Lockheed Corporation (T10000006816) and is currently a parking lot associated with Google Building 1265 located at 1265 Crossman Avenue. Soil excavation took place at this address in 2000 and 2001. Soil vapor sampling identified elevated concentrations of benzene within the subsurface. The location was redeveloped in 2014.
- **495 East Java Drive** (APN 11032025) – This address is not listed on GeoTracker or EnviroStor and the location has been redeveloped recently as a commercial office building. There were no indications of a release to the subsurface.
- **East side of Geneva Drive between East Caribbean Drive and Caspian Drive** (1350 Geneva Drive and APN 11032035) – Based on the inspection of historical aerial photographs, this location has remained vacant since 2012. At the time of the site reconnaissance, this location contained a large stockpile and a newly installed parking lot with a fence surrounding the perimeter of the location. There was no indication of where the stockpile soil originated from or who was managing this location (Photographs 9 and 10).
- **Center of block bounded by East Caribbean Drive, Borregas Drive, Caspian Drive and Geneva Drive** (245 Caspian Drive and APN 11033037) – Based on the inspection of historical aerial photographs, this location has remained vacant since 1982. At the time of the site reconnaissance, this location was an L-shaped vacant lot with a paved parking lot



to the south and surrounded by a chain-link fence. There was no indication of a release to the subsurface (Photographs 11 and 12).

- **Intersection of Bordeaux Drive and West Java Drive, Northwest and Southwest Corners** (399 West Java Drive, APN 11026047; 1333 Bordeaux Drive, APN 11026033; 1235 Bordeaux Drive, APN 11025044)– Based on the inspection of historical aerial photographs, this location is split into a northern and southern lot. The northern lot has remained vacant since 2005 and the southern lot has remained vacant since 2018. At the time of the site reconnaissance, both lots were vacant and surrounded by a chain-link fence. The southern lot is a flat grade with several wooden parking lot lights. The northern lot contains several small stockpiles, wooden parking lot lights, and building foundation remnants that have not been removed or construction that started and stopped for reasons unknown (Photographs 13 and 14).
- **Former Industrial Area Northeast of E Street and 11th Avenue** (portion of APN 11002068) – Based on the inspection of historical aerial photographs, several portions of this area have remained vacant since 2012, despite redevelopment of buildings at 1133 Innovation Way. At the time of the site reconnaissance, the location was empty lots surrounded by privacy fencing with indications of building foundation columns installed within the gravel grade. There was construction debris littered across the location and several stockpile mounds in the center of the lot. One uncovered 55-gallon drum was observed near the northern portion of the location (Photographs 15 and 16).



7.0 CONCLUSIONS AND RECOMMENDATIONS

Farallon has prepared this EE Report for the Moffett Park Specific Plan Area in Sunnyvale, California. The EE Report is an evaluation of the current environmental property conditions within the Plan Area to inform future use planning. Farallon has conducted an environmental database review, online repository research, aerial photograph review, and site reconnaissance. Farallon was unable to schedule an appointment with the Clerk-Recorder's Office for land use restriction research due to ongoing COVID-19 health concerns.

Farallon used the information collected and reviewed for this EE Report to assess the relative risk of environmental impacts existing on a given parcel. The cumulative results are shown on Figure 1 and Table 2.

In addition, the following potential environmental issues in the general Plan Area were noted:

- Wide-spread agricultural use of the Plan Area can be expected to result in the presence of pesticides and related metals in surface soil. If orchards and other row crops were present in the Plan Area, isolated releases of petroleum hydrocarbons related to use of heating equipment during cold weather may have also impacted surface soil.
- Wide-spread commercial and industrial use of the Plan Area can be expected to result in the presence of PAHs in surface soil. PAHs are a general concern within regions with significant industrial activity and have been found extensively on land surrounding San Francisco Bay.

Many listed facilities with known contamination appear to be managed or redeveloped under Media Management Plans; the exact handling procedures and land use restrictions limitations would vary depending on the nature and extent of contamination. Farallon recommends a more thorough file review of individual facilities to determine development and media management options and to further assess the potential extent of environmental impacts associated with historical releases of hazardous substances, particularly the following listings:

- Former DII Orbit Semiconductor (1230 Bordeaux Drive);
- 1320-1322 Bourdoux (sic) Drive (SL0608552478);
- AC Ball Menlo Caspian (141 Caspian Court);
- Lockheed Corporation (480 East Java Drive);
- Lockheed Sunnyvale – Plant One and Lockheed Corporation (1111 Lockheed Martin Way);
- Consolidated Freightways, Inc. (1319 Moffett Park Drive);
- Moffett Park Auto Center (1135 North Mathilda Avenue); and
- Onizuka Air Force Base (1080 Lockheed Martin Way).

Most of these Sites are listed as ‘Completed – Case Closed’ on GeoTracker with the exception of Lockheed Sunnyvale – Plane One Facility (Open – Remediation), Lockheed Corporation (Informational Item), and Onizuka Air Force Base (Informational Item).



8.0 REFERENCES

- Department of Toxic Substances Control EnviroStor (EnviroStor). 2021. Database Search for Sites with the Moffett Park Specific Plan Area. < <https://www.envirostor.dtsc.ca.gov/public/>>. (January 25, 26, and 28, 2021; February 17, 2021.)
- Environmental Risk Information Services (ERIS). 2020. *Historical Aerials, Moffett Park Specific Plan Area, Sunnyvale, CA*. October 8.
- . 2020. *Database Report, Moffett Park Specific Plan Area, Sunnyvale, CA*. October 8.
- Office of the Assessor, County of Santa Clara. 2016. Real Property Database Search for Sites with the Moffett Park Specific Plan Area. < <https://www.sccassessor.org/index.php/online-services/property-search/real-property>>. (2021.)
- State Water Resources Control Board GeoTracker ESI (GeoTracker). 2021. GeoTracker Database Search for Sites with the Moffett Park Specific Plan Area. < <https://geotracker.waterboards.ca.gov/>>. (January 25, 26, 27, 28, and 29, 2021; February 16 and 17, 2021.)
- Naval Facilities Engineering Systems Command. 2019. *Proposed Plan for Site 9 Groundwater, Naval Industrial Reserve Ordnance Plant, Sunnyvale California*. December.
- The United States Department of the Navy (Navy). 2020. *Draft Environmental Assessment for Naval Industrial Reserve Ordnance Plan Land Exchange at Sunnyvale, California*, September.
- . 2021. Public Information Access Online Repository Search for Sites with the Moffett Park Specific Plan Area. < https://www.cnic.navy.mil/regions/cnrsw/om/environmental_support/Public_Review_of_Navy_Projects.html>. (March 16, 2021.)



9.0 LIMITATIONS

9.1 GENERAL LIMITATIONS

The conclusions contained in this report/assessment are based on professional opinions with regard to the subject matter. These opinions have been arrived at in accordance with currently accepted hydrogeologic and engineering standards and practices applicable to this location. The conclusions contained herein are subject to the following inherent limitations:

- **Accuracy of Information.** Farallon obtained, reviewed, and evaluated certain information used in this report/assessment from sources that were believed to be reliable. Farallon's conclusions, opinions, and recommendations are based in part on such information. Farallon's services did not include verification of its accuracy or authenticity. Should the information upon which Farallon relied prove to be inaccurate or unreliable, Farallon reserves the right to amend or revise its conclusions, opinions, and/or recommendations.
- **Reconnaissance and/or Characterization.** Farallon performed a reconnaissance and/or characterization of the Plan Area that is the subject of this report/assessment to document current conditions. Farallon focused on areas deemed more likely to exhibit hazardous materials conditions. Contamination may exist in other areas of the Plan Area that were not investigated or were inaccessible. Plan Area activities beyond Farallon's control could change at any time after the completion of this report/assessment.

For the foregoing reasons, Farallon cannot and does not warrant or guarantee that the Plan Area is free of hazardous or potentially hazardous substances or conditions, or that latent or undiscovered conditions will not become evident in the future. Farallon's observations, findings, and opinions can be considered valid only as of the date of the report.

This report/assessment has been prepared in accordance with the contract for services between Farallon and Intuitive Surgical Operations, Inc., and currently accepted industry standards. No other warranties, representations, or certifications are made.

9.2 LIMITATION ON RELIANCE BY THIRD PARTIES

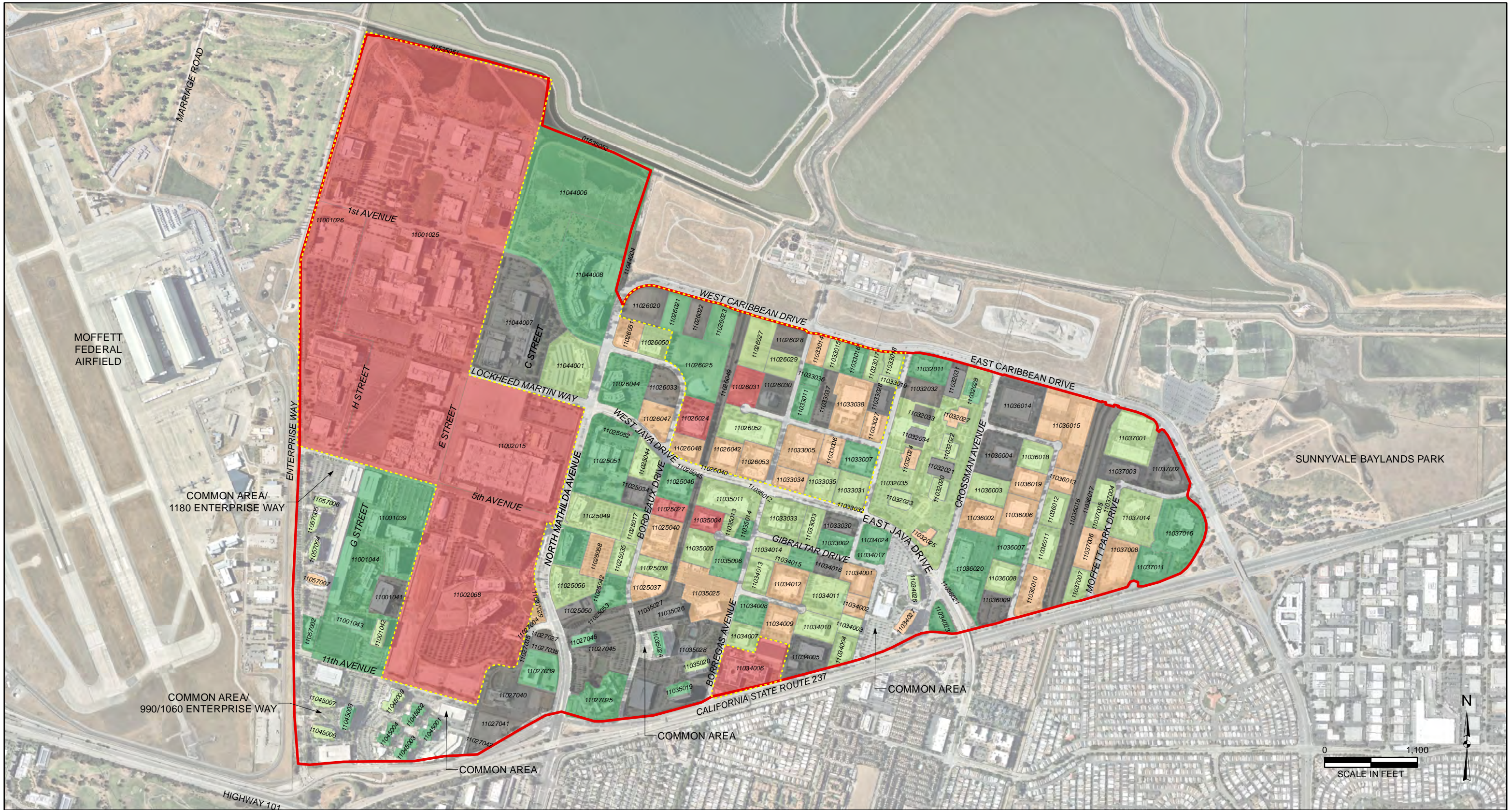
Reliance by third parties is prohibited. This report/assessment has been prepared for the exclusive use of David J. Powers & Associates, Inc. to address the unique needs of specific plan development at a specific point in time. The City of Sunnyvale is recognized as an intended user of this report/assessment, subject to the same limitations as David J. Powers & Associates, Inc.

This is not a general grant of reliance. No one other than David J. Powers & Associates, Inc. may rely on this report unless Farallon agrees in advance to such reliance in writing. Any unauthorized use, interpretation, or reliance on this report/assessment is at the sole risk of that party and Farallon will have no liability for such unauthorized use, interpretation, or reliance.

FIGURE

**ENVIRONMENTAL EVALUATION REPORT
Moffett Park Specific Plan
Sunnyvale, California**

Farallon PN: 2481-002



LEGEND

- NO LISTINGS; NO ADDRESS IDENTIFIED
- LISTINGS FOR STORAGE OR HANDLING OF HAZARDOUS MATERIAL; LOW RISK DUE TO TYPE OF HAZMAT USED AT SITE, NO VIOLATIONS OR ONLY MINOR ADMINISTRATIVE VIOLATIONS (e.g. LACK OF SIGNATURE OR PROPER FILING)
- LISTED FOR STORAGE OR HANDLING OF HAZARDOUS MATERIALS; LOW-MEDIUM RISK, FEW VIOLATIONS FOR HANDLING PRACTICES BUT RETURNED TO COMPLIANCE
- LISTED FOR STORAGE OR HANDLING OF HAZARDOUS MATERIALS; MEDIUM RISK, FEW VIOLATIONS FOR HANDLING PRACTICES BUT RETURNED TO COMPLIANCE;
- HAZARDOUS MATERIALS INCLUDE HALOGENATED SOLVENTS
- KNOWN CONTAMINATION REGARDLESS OF STATUS
- OPEN GEOTRACKER LISTING
- SITE BOUNDARY

NOTES:
 1. ALL LOCATIONS ARE APPROXIMATE.
 2. FIGURES WERE PRODUCED IN COLOR. GRAYSCALE COPIES MAY NOT REPRODUCE ALL ORIGINAL INFORMATION.



FARALLON
CONSULTING

Your Challenges. Our Priority. | farallonconsulting.com

Washington
Issaquah | Bellingham | Seattle

Oregon
Portland | Baker City

California
Oakland | Irvine

FIGURE 1

**MOFFETT PARK SPECIFIC PLAN AREA
SUNNYVALE, CALIFORNIA**

FARALLON PN: 2481-002

TABLES

**ENVIRONMENTAL EVALUATION REPORT
Moffett Park Specific Plan
Sunnyvale, California**

Farallon PN: 2481-002

**Table 1
Environmental Risk Review Summary
Moffett Park Specific Plan Area
Sunnyvale, California
Farallon PN: 2481-002**

Draft—Issued for Agency Review

Address	APN	Listed Owners or Operators	Database Listings																				
			AST	CERS HAZ	CERS TANK	CLEANUP SITES	ENVIROSTOR	GEOTRACKER	HAZNET	HHSS	HIST TANK	LUST	RCRA CESQG	RCRA LQG	RCRA NONGEN	RCRA TSD	SANTACLARA CUPA	SANTACLARA HSOL	SANTACLARA LO	SUNNYVALE SUPA	TRIS	UST	
No address	11032033	Not identified																					
160 Gibraltar Avenue	11035005	CREE MICROWAVE; SPECTRIAN CORPORATION; JUNIPER NETWORKS, INC; ULTRARF		X			X			X					X	X	X						
1120 Innovation Way	11027027																						
1170 Bordeaux Drive	11035024	Google LLC - MP3; Moffett Place LLC		X																			
1240 Crossman Avenue	11036020	Network Appliance; NetApp Inc; Google LLC; NetApp Inc. Building 11	X							X				X	X								
328 Gibraltar Drive	11034001	EXXON ENTERPRISES INC								X		X											
225 Humboldt Court	11034011	AMPRIUS INC; PRODUCTIVITY TECHNOLOGY; AMPRIUS INC; LUMISYS; PARACOR MEDICAL INC								X				X									
275 Gibraltar Drive	11033002	GOOGLE LLC; LOCKHEED MISSILES & SPACE CO; LUCENT TECHNOLOGIES INC; PETER CHANG; ALLIANCE FIBER OPTION PRODUCTS INC								X				X									
1299 Orleans Drive	11036007	CREDENCE; A M B PROPERTY LP								X													
1308 E. Moffett Park Drive	11037008	Bloom Energy; PACIFIC MONOLITHS INC; FINISAR CORPORATION		X						X				X		X							
1108 N. Mathilda Avenue	11027025	Faz Restaurants		X																			
1333 Bordeaux Drive	11026033	None identified																					
1235 N. Mathilda Avenue	11002015	SUNNYVALE NIROP; SUPERTEX INC; LOCKEED MISSILES & SPACE CO; DIASONICS INC; SUPERTEX INC				X				X			X		X								
250 Java Drive	11033030	None identified																					
165 Gibraltar Court	11035004	PAN AMERICAN SAVINGS; TEXAS INSTRUMENTS, INC.; TERTELING ELECTRONICS; SPECTRIAN CORP; SITE ONE LLC				X																	
815 11th Avenue	11045009	Google LLC - TC6; Building 6 Underground Parking Structure		X																			
1365 Geneva Drive	11033028	None identified																					
905 11th Avenue	11001043	MT2B2; AMAZON - SJC14; AMAZON LAB126		X								X											
905 11th Avenue	11001039			X								X											
	11026049	None identified																					
1100 Enterprise Way	11057007	AMAZON - SJC11; AMAZON LAB126		X						X			X										
111 Java Drive	11026053	SANDISK CORPORATION; LOCKHEED MISSILES & SPACE CO								X				X		X							
390 Caribbean Drive	11026020	None identified																					
1120 Enterprise Way	11057004	Amazon - SJC10; Moffett Towers Building E; Amazon Lab126; Jay Paul Company		X	X									X									
1213 Innsbruck Drive	11034004	SILK ROAD MEDICAL, INC		X										X									
1305 Crossman Avenue	11032021	None identified																					
1200 Crossman Avenue	11034023	JO-EL ASSOCIATES								X													
241 Java Drive	11033035	CTT INC; ASYST TECHNOLOGIES INC; TRW AVIONICS & SURVEILLANCE GROUP								X	X			X									
141 Caspian Court	11026031	BALL A C CO; A C BALL COMPANY; ESL INCORPORATED; CBRE INC; MENLO CASPIAN PROPERTY; etc		X		X	X			X				X			X						
1380 Bordeaux Drive	11026051	CONTACT INTERNATIONAL CORPORATION; GREAT WESTERN BANK; CALIFORNIA BAVARIAN CORPORATION; KOLTRON CORPORATION								X	X		X		X	X					X		
1225 Crossman Avenue	11034027	Google LLC - CRSM1225												X	X								
220 Humboldt Court	11034009	INFINERA CORPORATION; VARIAN ANALYTICAL INSTRUMENTS; VARIOUS INC.; SCREEN TECH INC; HEWLETT PACKARD; MERCURY INTERACTIVE INC		X						X				X									
1339 E. Moffett Park Drive	11037004	RAE SYSTEMS								X													
1355 Geneva Drive	11033027	INVAX TECHNOLOGIES INC; GENMARK AUTOMATION INC		X						X				X									

**Table 1
Environmental Risk Review Summary
Moffett Park Specific Plan Area
Sunnyvale, California
Farallon PN: 2481-002**

Draft—Issued for Agency Review

Address	APN	Listed Owners or Operators	Historical Findings										Risk Evaluation	
			Halogenated Solvents	Petroleum products	Waste oil	Laboratory or photochemical waste	Other hazardous materials	Administrative violations	Handling violations	Historic tanks or sumps	Listed prior to 1990	Known release of hazardous substances		
No address	11032033	Not identified												None identified
160 Gibraltar Avenue	11035005	CREE MICROWAVE; SPECTRIAN CORPORATION; JUNIPER NETWORKS, INC; ULTRARF	X						X					Storage and handling of hazardous materials
1120 Innovation Way	11027027													None identified
1170 Bordeaux Drive	11035024	Google LLC - MP3; Moffett Place LLC							X					No significant use of hazardous materials or violations
1240 Crossman Avenue	11036020	Network Appliance; NetApp Inc; Google LLC; NetApp Inc. Building 11												No significant use of hazardous materials or violations
328 Gibraltar Drive	11034001	EXXON ENTERPRISES INC	X	X								X		Storage and handling of hazardous materials
225 Humboldt Court	11034011	AMPRIUS INC; PRODUCTIVITY TECHNOLOGY; AMPRIUS INC; LUMISYS; PARACOR MEDICAL INC	X			X								Storage and handling of hazardous materials
275 Gibraltar Drive	11033002	GOOGLE LLC; LOCKHEED MISSILES & SPACE CO; LUCENT TECHNOLOGIES INC; PETER CHANG; ALLIANCE FIBER OPTION PRODUCTS INC												No significant use of hazardous materials or violations
1299 Orleans Drive	11036007	CREDESCENCE; A M B PROPERTY LP												No significant use of hazardous materials or violations
1308 E. Moffett Park Drive	11037008	Bloom Energy; PACIFIC MONOLITHS INC; FINISAR CORPORATION	X									X		Storage and handling of hazardous materials
1108 N. Mathilda Avenue	11027025	Faz Restaurants							X					No significant use of hazardous materials
1333 Bordeaux Drive	11026033	None identified												None identified
1235 N. Mathilda Avenue	11002015	SUNNYVALE NIROP; SUPERTEX INC; LOCKEED MISSILES & SPACE CO; DIASONICS INC; SUPERTEX INC	X	X							X		X	Reported release of hazardous substances; requires further review
250 Java Drive	11033030	None identified												None identified
165 Gibraltar Court	11035004	PAN AMERICAN SAVINGS; TEXAS INSTRUMENTS, INC.; TERTELING ELECTRONICS; SPECTRIAN CORP; SITE ONE LLC	X										X	Reported release of hazardous substances; requires further review
815 11th Avenue	11045009	Google LLC - TC6; Building 6 Underground Parking Structure							X	X				No significant use of hazardous materials (used batteries, solder waste)
1365 Geneva Drive	11033028	None identified												None identified
905 11th Avenue	11001043	MT2B2; AMAZON - SJC14; AMAZON LAB126												No significant use of hazardous materials or violations
905 11th Avenue	11001039													No significant use of hazardous materials or violations
	11026049	None identified												None identified
1100 Enterprise Way	11057007	AMAZON - SJC11; AMAZON LAB126	X	X					X	X				Storage and handling of hazardous materials and violations
111 Java Drive	11026053	SANDISK CORPORATION; LOCKHEED MISSILES & SPACE CO	X			X						X		Storage and handling of hazardous materials
390 Caribbean Drive	11026020	None identified												None identified
1120 Enterprise Way	11057004	Amazon - SJC10; Moffett Towers Building E; Amazon Lab126; Jay Paul Company							X					No significant use of hazardous materials or violations
1213 Innsbruck Drive	11034004	SILK ROAD MEDICAL, INC							X					No significant use of hazardous materials or violations
1305 Crossman Avenue	11032021	None identified												None identified
1200 Crossman Avenue	11034023	JO-EL ASSOCIATES							X					No significant use of hazardous materials or violations
241 Java Drive	11033035	CTT INC; ASYST TECHNOLOGIES INC; TRW AVIONICS & SURVEILLANCE GROUP						X					X	Storage and handling of hazardous materials
141 Caspian Court	11026031	BALL A C CO; A C BALL COMPANY; ESL INCORPORATED; CBRE INC; MENLO CASPIAN PROPERTY; etc	X	X							X		X	Reported release of hazardous substances; requires further review
1380 Bordeaux Drive	11026051	CONTACT INTERNATIONAL CORPORATION; GREAT WESTERN BANK; CALIFORNIA BAVARIAN CORPORATION; KOLTRON CORPORATION	X	X	X					X		X		Storage and handling of hazardous materials and violations
1225 Crossman Avenue	11034027	Google LLC - CRSM1225	X	X	X		X		X		X			Storage and handling of hazardous materials and violations
220 Humboldt Court	11034009	INFINERA CORPORATION; VARIAN ANALYTICAL INSTRUMENTS; VARIOUS INC.; SCREEN TECH INC; HEWLETT PACKARD; MERCURY INTERACTIVE INC	X	X	X				X			X		Storage and handling of hazardous materials
1339 E. Moffett Park Drive	11037004	RAE SYSTEMS						X						No significant use of hazardous materials or violations
1355 Geneva Drive	11033027	INVAX TECHNOLOGIES INC; GENMARK AUTOMATION INC		X				X		X				Storage and handling of hazardous materials and violations

**Table 1
Environmental Risk Review Summary
Moffett Park Specific Plan Area
Sunnyvale, California
Farallon PN: 2481-002**

Draft—Issued for Agency Review

Address	APN	Listed Owners or Operators	Database Listings																				
			AST	CERS HAZ	CERS TANK	CLEANUP SITES	ENVIROSTOR	GEOTRACKER	HAZNET	HHSS	HIST TANK	LUST	RCRA CESQG	RCRA LQG	RCRA NONGEN	RCRA TSD	SANTACLARA CUPA	SANTACLARA HSOL	SANTACLARA LO	SUNNYVALE SUPA	TRIS	UST	
1345 Moffett Park Drive	11037003	None identified																					
1395 Crossman Avenue	11032028	NETAPP, INC; NETWORK APPLIANCE INC									X												
246 Caspian Drive	11033006	R O ASSOCIATES, INC											X					X					
1390 Borregas Avenue	11033014	LICONIX; CERMETEK MICROELECTRONICS INC									X												
	11035026	None identified																					
212 Gibraltar Drive	11034014	LOCKHEED MISSILES & SPACE CO; GOOGLE LLC; CLOUD SHIELD TECHNOLOGIES INC; LOCKHEED MARTIN-BLDG 589									X			X			X						
1345 Crossman Avenue	11032022	NetApp Building 3; ESL INCORPORATED; NETAPP BUILDING 7		X								X							X				
1194 N. Mathilda Avenue	11025058	Google LLC - MAT2; JUNIPER NETWORKS CORP; JUNIPER NETWORKS, INC.		X							X								X				
1194 N. Mathilda Avenue	11025057	INC.		X							X								X				
	01535052	None identified																					
250 Caribbean Drive	11033016	CALIFORNIA COMPUTER SYSTEMS									X												
1111 Lockheed Martin Way	11002068	LOCKHEED MARTIN; Lockheed Plant One Facility - UNREGS; Lockheed Sunnyvale; Verizon Wireless Lockheed West;	X	X	X	X	X	X	X	X	X			X	X	X	X	X	X			X	X
1111 Lockheed Martin Way	11001026		X	X	X	X	X	X	X	X				X	X	X	X	X	X			X	X
1111 Lockheed Martin Way	11001025		X	X	X	X	X	X	X	X				X	X	X	X	X	X			X	X
1311 Orleans Drive	11036006	Molecular Devices, LLC.; MOLECULAR DEVICES INC; MDS ANALYTICAL TECHNOLOGIES INC; LOCKHEED MISSILES & SPACE CO; MOLECULAR DEVICES CORP						X			X				X			X					
1322 Crossman Avenue	11036003	LOCKHEED MISSILES & SPACE CO; FAIR CHILD;									X				X			X					
1362 Borregas Avenue	11033011	1X COMPUTER POWER SUPPLIES INC									X												
1310 Chesapeake Trail	11037016	ACCURAY INCORPORATED									X			X									
701 1st Avenue	11044008	Verizon; Yahoo;			X																		
133 Caspian Court	11026030	None identified																					
1376 Borregas Avenue	11033036	VALMARK IND, INC									X			X									
1310 Orleans Drive	11036011	ACCURAY INCORPORATED; AEROGEN		X							X			X									
641 Baltic Way	11036015	LOCKHEED MISSLES & SPACE CO									X				X								
1135 N. Mathilda Avenue	11027029	MOFFETT PARK AUTO CENTER; 1X LOCKHEED MISSLES & SPACE CO; 1X MOFFETT PARK AUTO REPAIR; MOFFETT PARK AUTO REPAIR CENTE									X			X				X			X		
343 GIBRALTAR DR	11034017	KURDEX CORPORATION																					
1160 Borregas Avenue	11035028	None identified																					
809 11th Avenue	11045004	GOOGLENA INC - TC4; MOTOROLA INC; MOTOROLA MOBILITY INC									X												
1252 Orleans Drive	11036010	BLOOM ENERGY CORP; The Spill Center; PRAXAIR INC; BLUE29; MICROBAR INCORPORATED; LOCKHEED MARTIN WESTERN DEVELOPMENT LAB; LOCKHEED MARTIN SP & RANGE SYS		X							X				X	X	X	X					
904 Caribbean Drive	11037001	Verizon Wireless Lockheed East; AT&T Mobility - SUNNYVALE/CROSSMAN (USID116662); CEPHEID INC; 1X APPLE COMPUTERCO.; AETNA LIFE INSURANCE CO		X							X				X								
807 11th Avenue	11045002	Google LLC - TC2; GOOGLENA INC. - TC2; ARIBA INC		X							X												
1190 Bordeaux Drive	11035025	Google LLC - MP4; Moffett Place Building 4; UTAH INTERNATIONAL INC; THE MINERALS LABORATORY; AMCELL CORPORATION; CLINGENIX; VIRTUAL ARRAYS INC		X							X	X	X		X		X	X					
207 Java Drive	11033034	REXNORD GAS DETECTION PRODUCTS; 1X DETECTOR ELECTRONICS									X				X								
400 Caribbean Drive	11032011	Google Caribbean; MOZART DEVELOPMENT COMPANY; BROADCOM CORP; GOOGLE LLC, C/O CBRE INC; 400 CARIBBEAN ASSOCIATESNA LP		X							X												
1260 N. Mathilda Avenue	11025051	SOUTHBAY CONSTRUCTION; JSR MICROELECTRONICS INC									X							X					

**Table 1
Environmental Risk Review Summary
Moffett Park Specific Plan Area
Sunnyvale, California
Farallon PN: 2481-002**

Draft—Issued for Agency Review

Address	APN	Listed Owners or Operators	Historical Findings									Risk Evaluation	
			Halogenated Solvents	Petroleum products	Waste oil	Laboratory or photochemical waste	Other hazardous materials	Administrative violations	Handling violations	Historic tanks or sumps	Listed prior to 1990		Known release of hazardous substances
1345 Moffett Park Drive	11037003	None identified											None identified
1395 Crossman Avenue	11032028	NETAPP, INC; NETWORK APPLIANCE INC											No significant use of hazardous materials or violations
246 Caspian Drive	11033006	R O ASSOCIATES, INC	X		X						X		Storage and handling of hazardous materials
1390 Borregas Avenue	11033014	LICONIX; CERMETEK MICROELECTRONICS INC	X								X		Storage and handling of hazardous materials
	11035026	None identified											None identified
212 Gibraltar Drive	11034014	LOCKHEED MISSILES & SPACE CO; GOOGLE LLC; CLOUD SHIELD TECHNOLOGIES INC; LOCKHEED MARTIN-BLDG 589				X							No significant use of hazardous materials or violations
1345 Crossman Avenue	11032022	NetApp Building 3; ESL INCORPORATED; NETAPP BUILDING 7						X					No significant use of hazardous materials or violations
1194 N. Mathilda Avenue	11025058	Google LLC - MAT2; JUNIPER NETWORKS CORP; JUNIPER NETWORKS, INC.		X						X	X	X	Reported release of hazardous substances; requires further review
1194 N. Mathilda Avenue	11025057	INC.										X	No significant use of hazardous materials; Reported release of 0.0625
	01535052	None identified											None identified
250 Caribbean Drive	11033016	CALIFORNIA COMPUTER SYSTEMS				X							No significant use of hazardous materials or violations
1111 Lockheed Martin Way	11002068	LOCKHEED MARTIN; Lockheed Plant One Facility - UNREGS; Lockheed Sunnyvale; Verizon Wireless Lockheed West;					X	X	X	X	X	X	Reported release of hazardous substances; requires further review
1111 Lockheed Martin Way	11001026						X	X	X	X	X	X	Reported release of hazardous substances; requires further review
1111 Lockheed Martin Way	11001025						X	X	X	X	X	X	Reported release of hazardous substances; requires further review
1311 Orleans Drive	11036006	Molecular Devices, LLC.; MOLECULAR DEVICES INC; MDS ANALYTICAL TECHNOLOGIES INC; LOCKHEED MISSILES & SPACE CO; MOLECULAR DEVICES CORP	X	X			X						Storage and handling of hazardous materials
1322 Crossman Avenue	11036003	LOCKHEED MISSILES & SPACE CO; FAIR CHILD;					X						No significant use of hazardous materials or violations
1362 Borregas Avenue	11033011	1X COMPUTER POWER SUPPLIES INC									X		No significant use of hazardous materials or violations
1310 Chesapeake Trail	11037016	ACCURAY INCORPORATED				X	X						No significant use of hazardous materials or violations
701 1st Avenue	11044008	Verizon; Yahoo;						X					No significant use of hazardous materials or violations
133 Caspian Court	11026030	None identified											None identified
1376 Borregas Avenue	11033036	VALMARK IND, INC					X				X		No significant use of hazardous materials or violations
1310 Orleans Drive	11036011	ACCURAY INCORPORATED; AEROGEN					X	X					No significant use of hazardous materials or violations
641 Baltic Way	11036015	LOCKHEED MISSLES & SPACE CO	X			X	X				X		Storage and handling of hazardous materials
1135 N. Mathilda Avenue	11027029	MOFFETT PARK AUTO CENTER; 1X LOCKHEED MISSLES & SPACE CO; 1X MOFFETT PARK AUTO REPAIR; MOFFETT PARK AUTO REPAIR CENTE		X	X						X	X	Reported release of hazardous substances; requires further review
343 GIBRALTAR DR	11034017	KURDEX CORPORATION											No significant use of hazardous materials or violations
1160 Borregas Avenue	11035028	None identified											None identified
809 11th Avenue	11045004	GOOGLENA INC - TC4; MOTOROLA INC; MOTOROLA MOBILITY INC											No significant use of hazardous materials or violations
1252 Orleans Drive	11036010	BLOOM ENERGY CORP; The Spill Center; PRAXAIR INC; BLUE29; MICROBAR INCORPORATED; LOCKHEED MARTIN WESTERN DEVELOPMENT LAB; LOCKHEED MARTIN SP & RANGE SYS		X	X			X	X				Storage and handling of hazardous materials and violations
904 Caribbean Drive	11037001	Verizon Wireless Lockheed East; AT&T Mobility - SUNNYVALE/CROSSMAN (USID116662); CEPHEID INC; 1X APPLE COMPUTERCO.; AETNA LIFE INSURANCE CO					X	X					Storage and handling of hazardous materials
807 11th Avenue	11045002	Google LLC - TC2; GOOGLENA INC. - TC2; ARIBA INC					X	X					No significant use of hazardous materials or violations
1190 Bordeaux Drive	11035025	Google LLC - MP4; Moffett Place Building 4; UTAH INTERNATIONAL INC; THE MINERALS LABORATORY; AMCELL CORPORATION; CLINGENIX; VIRTUAL ARRAYS INC	X			X				X	X		Storage and handling of hazardous materials; waste sump since 1977
207 Java Drive	11033034	REXNORD GAS DETECTION PRODUCTS; 1X DETECTOR ELECTRONICS	X								X		Storage and handling of hazardous materials
400 Caribbean Drive	11032011	Google Caribbean; MOZART DEVELOPMENT COMPANY; BROADCOM CORP; GOOGLE LLC, C/O CBRE INC; 400 CARIBBEAN ASSOCIATESNA LP											No significant use of hazardous materials or violations
1260 N. Mathilda Avenue	11025051	SOUTHBAY CONSTRUCTION; JSR MICROELECTRONICS INC											No significant use of hazardous materials or violations

**Table 1
Environmental Risk Review Summary
Moffett Park Specific Plan Area
Sunnyvale, California
Farallon PN: 2481-002**

Address	APN	Listed Owners or Operators	Database Listings																				
			AST	CERS HAZ	CERS TANK	CLEANUP SITES	ENVIROSTOR	GEOTRACKER	HAZNET	HHSS	HIST TANK	LUST	RCRA CESQG	RCRA LQG	RCRA NONGEN	RCRA TSD	SANTACLARA CUPA	SANTACLARA HSOL	SANTACLARA LO	SUNNYVALE SUPA	TRIS	UST	
399 Java Drive	11026047	PERKIN ELMER ILC; ILC TECHNOLOGY; PERKIN ELMER OPTOELECTRONICS ILC TE															X						
1158 N. Mathilda Avenue	11027045	None identified																					
1210 Bordeaux Drive	11025038	City of Sunnyvale - Fire Station No 5			X															X			
	11027042	None identified																					
1277 Borregas Avenue	11035014	DEZCON INC								X													
	11032031	None identified																					
	11027041	None identified																					
1140 Enterprise Way	11057005	Moffett Towers- Building F; MICROFOCUS; HEWLETT PACKARD ENTERPRISE; SJC32		X						X			X	X									
1272 Borregas Avenue	11033033	FAIRCHILD SEMICONDUCTOR; TATUM OPERATIONS INC; LOCKHEED MARTIN SPACE SYSTEMS CO		X						X				X		X							
1221 Innsbruck Drive	11034003	GOOGLE LLC; GYNECARE DIVISION OF ETHICON INC; OCE GRAPHICS_INC								X				X		X							
	11025053	None identified																					
Mathilda Avenue	11027004	None identified																					
372 Caribbean Drive	11026022	None identified																					
589 Java Drive	11026044	YAHOO! BLDG G																					
1341 Orleans Drive	11036018	LOCKHEED; OMNIVISION TECHNOLOGIES INC								X				X									
1100 Discovery Way	11001042	MT2B1		X																			
1185 Bordeaux Drive	11025036	MEVICON INC								X													
	11035012	None identified																					
1350 Geneva Drive	11032035	NETAPP INC								X													
1215 Bordeaux Drive	11025017	MEGASENSE INC; AHERN RENTALS; DEERFIELD 1215 BORD LLC; E-FLOW INC						X		X			X	X									
242 Humboldt Court	11034010	MODIFIED POLYMER COMPONENTSNA INC.; CONFLUENT MEDICAL TECHNOLOGIES INC; GOOGLE LLC; CAVRO SCIENTIFIC								X				X									
1220 N. Mathilda Avenue	11025049	None identified																					
1000 Enterprise Way	11045006	Google LLC - MOT1; Moffett Towers Building A; MOTOROLA MOBILITY, INC		X						X													
	11025045	None identified																					
Mathilda Avenue	11027028	None identified																					
1319 Moffett Park Drive	11037006	Plamar USA Inc.; CONSOLIDATED FREIGHTWAYS; PLAMAR USA INC.; JIM'S MOBIL TRUCK REPAIR; CF MOTOR FREIGHT; AIRBORNE EXPRESS								X	X	X	X							X			
140 Caspian Court	11026052	INFINERA CORPORATION; SANDISK CORPORATION		X						x				X		X							
475 E. Java Drive	11032023	Network Appliance; ESL, INCORPORATED; 475 JAVA DRIVE LP																					
N. Mathilda Avenue	11044004	None identified																					
1150 Discovery Way	11001041	None identified																					
1393 Borregas Avenue	11026028	None identified																					
151 Gibraltar Court	11035013	LOCKHEED MARTIN SPACE SYSTEMS CO								X						X							

Table 1
Environmental Risk Review Summary
Moffett Park Specific Plan Area
Sunnyvale, California
Farallon PN: 2481-002

Draft—Issued for Agency Review

Address	APN	Listed Owners or Operators	Historical Findings										Risk Evaluation	
			Halogenated Solvents	Petroleum products	Waste oil	Laboratory or photochemical waste	Other hazardous materials	Administrative violations	Handling violations	Historic tanks or sumps	Listed prior to 1990	Known release of hazardous substances		
399 Java Drive	11026047	PERKIN ELMER ILC; ILC TECHNOLOGY; PERKIN ELMER OPTOELECTRONICS ILC TE	X			X	X			X		X		Storage and handling of hazardous materials and violations
1158 N. Mathilda Avenue	11027045	None identified												None identified
1210 Bordeaux Drive	11025038	City of Sunnyvale - Fire Station No 5												No significant use of hazardous materials or violations
	11027042	None identified												None identified
1277 Borregas Avenue	11035014	DEZCON INC					X							No significant use of hazardous materials or violations
	11032031	None identified												None identified
	11027041	None identified												None identified
1140 Enterprise Way	11057005	Moffett Towers- Building F; MICROFOCUS; HEWLETT PACKARD ENTERPRISE; SJC32												No significant use of hazardous materials or violations
1272 Borregas Avenue	11033033	FAIRCHILD SEMICONDUCTOR; TATUM OPERATIONS INC; LOCKHEED MARTIN SPACE SYSTEMS CO												No significant use of hazardous materials or violations
1221 Innsbruck Drive	11034003	GOOGLE LLC; GYNECARE DIVISION OF ETHICON INC; OCE GRAPHICS_INC	X			X								Storage and handling of hazardous materials and violations
	11025053	None identified												None identified
Mathilda Avenue	11027004	None identified												None identified
372 Caribbean Drive	11026022	None identified												None identified
589 Java Drive	11026044	YAHOO! BLDG G												No significant use of hazardous materials or violations
1341 Orleans Drive	11036018	LOCKHEED; OMNIVISION TECHNOLOGIES INC					X				X			No significant use of hazardous materials or violations
1100 Discovery Way	11001042	MT2B1						X						No significant use of hazardous materials or violations
1185 Bordeaux Drive	11025036	MEVICON INC												No significant use of hazardous materials or violations
	11035012	None identified												None identified
1350 Geneva Drive	11032035	NETAPP INC			X		X							No significant use of hazardous materials or violations
1215 Bordeaux Drive	11025017	MEGASENSE INC; AHERN RENTALS; DEERFIELD 1215 BORD LLC; E-FLOW INC			X		X							No significant use of hazardous materials or violations
242 Humboldt Court	11034010	MODIFIED POLYMER COMPONENTSNA INC.; CONFLUENT MEDICAL TECHNOLOGIES INC; GOOGLE LLC; CAVRO SCIENTIFIC			X		X							No significant use of hazardous materials or violations
1220 N. Mathilda Avenue	11025049	None identified				X	X							No significant use of hazardous materials or violations
1000 Enterprise Way	11045006	Google LLC - MOT1; Moffett Towers Building A; MOTOROLA MOBILITY, INC			X			X						No significant use of hazardous materials or violations
	11025045	None identified												None identified
Mathilda Avenue	11027028	None identified												None identified
1319 Moffett Park Drive	11037006	Plamar USA Inc.; CONSOLIDATED FREIGHTWAYS; PLAMAR USA INC.; JIM'S MOBIL TRUCK REPAIR; CF MOTOR FREIGHT; AIRBORNE EXPRESS	X	X	X		X				X		X	Reported release of hazardous substances; requires further review
140 Caspian Court	11026052	INFINERA CORPORATION; SANDISK CORPORATION			X			X						Storage and handling of hazardous materials
475 E. Java Drive	11032023	Network Appliance; ESL, INCORPORATED; 475 JAVA DRIVE LP			X		X	X						No significant use of hazardous materials or violations
N. Mathilda Avenue	11044004	None identified												None identified
1150 Discovery Way	11001041	None identified												None identified
1393 Borregas Avenue	11026028	None identified												None identified
151 Gibraltar Court	11035013	LOCKHEED MARTIN SPACE SYSTEMS CO					X							No significant use of hazardous materials or violations

**Table 1
Environmental Risk Review Summary
Moffett Park Specific Plan Area
Sunnyvale, California
Farallon PN: 2481-002**

Draft—Issued for Agency Review

Address	APN	Listed Owners or Operators	Database Listings																				
			AST	CERS HAZ	CERS TANK	CLEANUP SITES	ENVIROSTOR	GEOTRACKER	HAZNET	HHSS	HIST TANK	LUST	RCRA CESQG	RCRA LQG	RCRA NONGEN	RCRA TSD	SANTA CLARA CUPA	SANTA CLARA HSOL	SANTA CLARA LO	SUNNYVALE SUPA	TRIS	UST	
1230 Bordeaux Drive	11025027	FormuMax Scientific Inc.; Lucidant Polymers, LLC; Aravasc Inc; PANORAMA RESEARCH, INC.; BridGene Biosciences, Inc; DII ORBIT SEMICONDUCTOR (FORMER); Senova Systems; MagArray Inc; Galaxy Biotech LLC; CytoDesign, Inc.; NETWORK DEVICE INC; ORBIT SEMICONDUCTOR, INC; ALPHA INDUSTRIES; SKYWORKS SOLUTIONS; TARGEAD SCIENCES INC; ALLOSTEROS THERAPEUTICS; IN-VIVO SCIENCE INTERNATIONAL INC; NEUCYTE; CO MENTIS;		X		X	X		X	X	X		X		X	X	X					X	
1170 Discovery Way	11001044	MT2A		X																			
1327 Orleans Drive	11036019	WL Gore & Associates; BOSTON SCIENTIC CORP; CARDIOVASCULAR IMAGING SYSTEMS							X					X		X							
Lockheed Martin Way	11027035	None identified																					
	11036016	None identified																					
	11036017	None identified																					
	11027038	None identified																					
1221 Bordeaux Drive	11025034	None identified																					
1330 Bordeaux Drive	11026025	HYUNDAI							X														
526 Baltic Way	11036004	None identified																					
310 Caribbean Drive	11033018	GENMARK AUTOMATION INC; DUSAN TOOLS INC.							X														
1050 Enterprise Way	11045007	Rambus Inc.; Moffett Towers Building C; NRC; MT SPE LLC; JAY PAUL COMPANY		X	X				X														
169 Java Drive	11026042	LOCKHEED MISSILES & SPACE CO; INFINERA CORP; FLEXTRONICS							X				X										
1325 Geneva Drive	11033007	1325 GENEVA DRIVE																					
495 E. Java Drive	11032025	ESL INC; PG&E; NETAPP INC; GOOGLE INC; XL CONSTRUCTION							X					X									
1175 Borregas Avenue	11035020	Google LLC - MP2; SANMINA CORP; PRAGMATECH,INC; 1X RREEF USA FUND-II; LOCKHEED MARTIN SPACE SYSTEMS CO		X					X														
1275 Crossman Avenue	11032020	NETWORK APPLIANCE INC; ESL, INCORPORATED; TRW SYSTEMS INTEGRATION GROUP				X			X					X									
	11033032	None identified																					
1383 Borregas Avenue	11026029	DHL WORLDWIDE EXPRESS INC; FIRST VEHICLE SERVICES; MINDHAM COMPANY INC; AMB PROPERTY CORPORATION;							X														
805 11th Avenue	11045003	GOOGLENA INC - TC3																					
1020 Enterprise Way	11045008	Microsoft SVMT; Moffett Towers Building B		X	X																		
	11025052	None identified																					
232 Java Drive	11033003	MIRAGE SYSTEMS INC; MARTIN MARIETTA SPACE SYSTEMS							X														
1320 Bordeaux Drive	11026024	DHL AIRWAYS INC; 1X PROPERTY MANAGEMENT SYSTEMS; 1X CITICORP INVESTMENT MANAGEMENT INC; M P OPTICOM; CUSHMAN & WAKEFIELD INC				X			X														
1190 Borregas Avenue	11034007	Labcyte, Inc.; LOCKHEED MISSILES & SPACE CO; CONTROL DATA CORP; PICOLITER, INC; ALEXON BIOMEDICAL INC; ARBOR VITA; CEPHEID;							X				X		X		X						
803 11th Avenue	11045001	GOOGLE LLC; ONE MEDICAL @ GOOGLE TC1							X					X									
222 Caspian Drive	11033005	VERIAS SOFTWARE INC.; Google LLC; 222 CASPIAN DRIVE OWNERNA LLC; DAZIK COMPANY, INC; RACAL-VADIC; TCI- BR COMMUNICATIONS	X	X					X								X						
1070 Innovation Way	11027039	FOOTHILL DE ANZA EDUCATION CENTER							X					X									
1188 Bordeaux Drive	11025037	HANDAR; ELEXSYS INTERNATIONAL INC.; PROFESSIONAL GRAPHICS & EXHIBIT INC; MICRO TEST SYSTEMS; MOFFETT PLACE LLC							X				X			X							

**Table 1
Environmental Risk Review Summary
Moffett Park Specific Plan Area
Sunnyvale, California
Farallon PN: 2481-002**

Draft—Issued for Agency Review

Address	APN	Listed Owners or Operators	Historical Findings										Risk Evaluation		
			Halogenated Solvents	Petroleum products	Waste oil	Laboratory or photochemical waste	Other hazardous materials	Administrative violations	Handling violations	Historic tanks or sumps	Listed prior to 1990	Known release of hazardous substances			
1230 Bordeaux Drive	11025027	FormuMax Scientific Inc.; Lucidant Polymers, LLC; Aravasc Inc; PANORAMA RESEARCH, INC.; BridGene Biosciences, Inc; DII ORBIT SEMICONDUCTOR (FORMER); Senova Systems; MagArray Inc; Galaxy Biotech LLC; CytoDesign, Inc.; NETWORK DEVICE INC; ORBIT SEMICONDUCTOR, INC; ALPHA INDUSTRIES; SKYWORKS SOLUTIONS; TARGEAD SCIENCES INC; ALLOSTEROS THERAPEUTICS; IN-VIVO SCIENCE INTERNATIONAL INC; NEUCYTE; CO MENTIS;	X						X	X				X	Reported release of hazardous substances; requires further review
1170 Discovery Way	11001044	MT2A													No significant use of hazardous materials or violations
1327 Orleans Drive	11036019	WL Gore & Associates; BOSTON SCIENTIC CORP; CARDIOVASCULAR IMAGING SYSTEMS	X	X		X	X								Storage and handling of hazardous materials
Lockheed Martin Way	11027035	None identified													None identified
	11036016	None identified													None identified
	11036017	None identified													None identified
	11027038	None identified													None identified
1221 Bordeaux Drive	11025034	None identified													None identified
1330 Bordeaux Drive	11026025	HYUNDAI													No significant use of hazardous materials or violations
526 Baltic Way	11036004	None identified													None identified
310 Caribbean Drive	11033018	GENMARK AUTOMATION INC; DUSAN TOOLS INC.			X	X						X			Storage and handling of hazardous materials
1050 Enterprise Way	11045007	Rambus Inc.; Moffett Towers Building C; NRC; MT SPE LLC; JAY PAUL COMPANY							X					X	Reported release of hazardous substances (hydraulic oil); requires further review
169 Java Drive	11026042	LOCKHEED MISSILES & SPACE CO; INFINERA CORP; FLEXTRONICS	X		X	X						X			Storage and handling of hazardous materials
1325 Geneva Drive	11033007	1325 GENEVA DRIVE													None identified
495 E. Java Drive	11032025	ESL INC; PG&E; NETAPP INC; GOOGLE INC; XL CONSTRUCTION	X		X							X	X		Reported release of approx. 3 gallons of non-PCB transformer oil, contained and cleaned; requires further review
1175 Borregas Avenue	11035020	Google LLC - MP2; SANMINA CORP; PRAGMATECH,INC; 1X RREEF USA FUND-II; LOCKHEED MARTIN SPACE SYSTEMS CO						X	X						Storage and handling of hazardous materials
1275 Crossman Avenue	11032020	NETWORK APPLIANCE INC; ESL, INCORPORATED; TRW SYSTEMS INTEGRATION GROUP							X					X	Storage and handling of hazardous materials; Reported release of PCB materials, requires further review
	11033032	None identified													None identified
1383 Borregas Avenue	11026029	DHL WORLDWIDE EXPRESS INC; FIRST VEHICLE SERVICES; MINDHAM COMPANY INC; AMB PROPERTY CORPORATION;			X									X	Reported release of 2.5L of ethylene glycol monomethyl ether acetate
805 11th Avenue	11045003	GOOGLENA INC - TC3					X	X							No significant use of hazardous materials or violations
1020 Enterprise Way	11045008	Microsoft SVMT; Moffett Towers Building B						X							Storage and handling of hazardous materials
	11025052	None identified													None identified
232 Java Drive	11033003	MIRAGE SYSTEMS INC; MARTIN MARIETTA SPACE SYSTEMS				X	X					X			Storage and handling of hazardous materials
1320 Bordeaux Drive	11026024	DHL AIRWAYS INC; 1X PROPERTY MANAGEMENT SYSTEMS; 1X CITICORP INVESTMENT MANAGEMENT INC; M P OPTICOM; CUSHMAN & WAKEFIELD INC						X				X	X		Reported release of phosphoric acid, none to ground; requires further review
1190 Borregas Avenue	11034007	Labcyte, Inc.; LOCKHEED MISSILES & SPACE CO; CONTROL DATA CORP; PICOLITER, INC; ALEXON BIOMEDICAL INC; ARBOR VITA; CEPHEID;			X	X	X					X			Storage and handling of hazardous materials
803 11th Avenue	11045001	GOOGLE LLC; ONE MEDICAL @ GOOGLE TC1													No significant use of hazardous materials or violations
222 Caspian Drive	11033005	VERIAS SOFTWARE INC.; Google LLC; 222 CASPIAN DRIVE OWNERS LLC; DAZIK COMPANY, INC; RACAL-VADIC; TCI- BR COMMUNICATIONS	X		X			X	X			X			Storage and handling of hazardous materials
1070 Innovation Way	11027039	FOOTHILL DE ANZA EDUCATION CENTER						X							No significant use of hazardous materials or violations
1188 Bordeaux Drive	11025037	HANDAR; ELEXSYS INTERNATIONAL INC.; PROFESSIONAL GRAPHICS & EXHIBIT INC; MICRO TEST SYSTEMS; MOFFETT PLACE LLC	X		X							X			Storage and handling of hazardous materials

**Table 1
Environmental Risk Review Summary
Moffett Park Specific Plan Area
Sunnyvale, California
Farallon PN: 2481-002**

Draft—Issued for Agency Review

Address	APN	Listed Owners or Operators	Database Listings																				
			AST	CERS HAZ	CERS TANK	CLEANUP SITES	ENVIROSTOR	GEOTRACKER	HAZNET	HHSS	HIST TANK	LUST	RCRA CESQG	RCRA LQG	RCRA NONGEN	RCRA TSD	SANTACLARA CUPA	SANTACLARA HSOL	SANTACLARA LO	SUNNYVALE SUPA	TRIS	UST	
	11025050	None identified																					
1212 Bordeaux Drive	11025040	Space Systems/Loral LLC; ESL, INCORPORATED; TRW SYSTEMS INTEGRATION GROUP; NORTHROP GRUMMAN MISSION SYSTEMS; MCLARNEY CONSTRUCTION COMPANY; TRW ELECTROMAGNETIC SYSTEMS DIVISION; ADEPT TECHNOLOGY INC; GOOGLE INC											X						X				
1309 Moffett Park Drive	11037007	LOCKHEED MARTIN SPACE SYSTEMS CO; ETNA CORP; AETRA LIFE INS																	X				
215 E. Moffett Park Drive	11034006	MOFFETT PARK DR/ MCCANDLESS DEV; Applied Micro; CONTROL DATA CORP				X								X						X			
Java Drive	11026040	None identified																					
1196 Borregas Drive	11034008	FRORE SYSTEMS INC																	X	X			
1315 Chesapeake Terrace	11037014	CEPHEID, INC; TELEBIT CORP; REVO INC; SOUTH BAY DEVELOPMENT INC		X																			
255 Caspian Drive	11033038	Equinix LLC; GLOBAL CROSSING; EQUINIX OPERATING COMPANY, INC; MISSION WEST PROPERTIES, INC; MICROUNITY SYSTEMS ENGINEERING; INTERCONNECT USA/INTERCONNECT TECH; SARES REGIS GROUP; COM DISCO ELECTRONICS GROUP; SAMMIS CO;			X		X								X				X				X
1235 Bordeaux Drive	11025044	Supertex Inc; LOCKHEED MISSILES & SPACE CO; DIASONICS, INC.;												X					X				
1265 Crossman Avenue	11034026	Google LLC - CRSM1265		X																			
1300 Chesapeake Terrace	11037011	AT&T MOBILITY - NORTH SUNNYVALE (13260)																					
	11033029	None identified																					
741 1st Avenue	11044006	Verizon Media Bldg B; YAHOO! BLDG B.			X																		
920 Caribbean Drive	11037002	None identified																					
140 Caribbean Drive	11026027	RREEF FUNDS; LOCKHEED MARTIN SPACE SYSTEMS													X								
1184 N. Mathilda Avenue	11025056	Google LLC - MAT1; VERIZON WIRELESS (LOCKHEED); AT&T Mobility - 5TH - BORDEAUX (USID47736); JUNIPER NETWORKS; L E WENTZ CO		X																			
390 Java Drive	11025046	EXIDY INC																					
1250 Borregas Avenue	11034013	CATALYST SEMICONDUCTOR INC; LORAL SPACE AND RANGE SYSTEMS																	X				
1330 Orleans Drive	11036013	ULTRA SYSTEMS; PULNIX AMERICA													X								
335 E MOFFETT PARK DR	11034005	None identified																					
395 JAVA DR	11026048	TERRASENSE, INC; INSIGNIA COMMERCIAL GROUP; GEOMETRICS INC; E.G & G GEOMETRICS; ETNA LIFE INSURANCE																					
292 Gibraltar Drive	11034016	None identified																					
1312 Crossman Avenue	11036002	Molecular Devices, LLC; MEDTRONIC ANEURX; GOOGLE INC.; MEDTRONIC CARDIO RHYTHM																	X				
1376 Bordeaux Drive	11026050	MAGIC LEAP		X																X			
1330 Geneva Drive	11032024	NETWORK APPLIANCE; ESL, INC.; ESLNA INC.																				X	
1329 Moffett Park Drive MOFFETT	11037005	LIQUID ROBOTICS INC; LOCKHEED MISSILES AND SPACE CO		X																			
	11032032	None identified																					
217 Humboldt Court	11034012	BLOOM ENERGY CORPORATION; LOCKHEED MISSILES & SPACE CO; DEVONG SYSTEMS INCORP.		X																X			
1265 Borregas Avenue	11035006	TATEM OPERATIONS; DCMC SAN FRANCISCO																					
	11044007	None identified																					
1249 Innsbruck Drive	11034002	BR COMMUNICATIONS; GOOGLE LLC													X					X			
1391 Geneva Drive	11033019	FIRST SOLAR INC; TRANSLATIONAL BIOSCIENCE													X					X			
	11025042	None identified																					

**Table 1
Environmental Risk Review Summary
Moffett Park Specific Plan Area
Sunnyvale, California
Farallon PN: 2481-002**

Draft—Issued for Agency Review

Address	APN	Listed Owners or Operators	Historical Findings										Risk Evaluation	
			Halogenated Solvents	Petroleum products	Waste oil	Laboratory or photochemical waste	Other hazardous materials	Administrative violations	Handling violations	Historic tanks or sumps	Listed prior to 1990	Known release of hazardous substances		
	11025050	None identified												None identified
1212 Bordeaux Drive	11025040	Space Systems/Loral LLC; ESL, INCORPORATED; TRW SYSTEMS INTEGRATION GROUP; NORTHROP GRUMMAN MISSION SYSTEMS; MCLARNEY CONSTRUCTION COMPANY; TRW ELECTROMAGNETIC SYSTEMS DIVISION; ADEPT TECHNOLOGY INC; GOOGLE INC	X		X			X						Storage and handling of hazardous materials
1309 Moffett Park Drive	11037007	LOCKHEED MARTIN SPACE SYSTEMS CO; ETNA CORP; AETRA LIFE INS						X				X		Storage and handling of hazardous materials
215 E. Moffett Park Drive	11034006	MOFFETT PARK DR/ MCCANDLESS DEV; Applied Micro; CONTROL DATA CORP	X		X	X	X					X	X	Reported release of hazardous substances to aquifer; requires further review
Java Drive	11026040	None identified												None identified
1196 Borregas Drive	11034008	FRORE SYSTEMS INC												No significant use of hazardous materials or violations
1315 Chesapeake Terrace	11037014	CEPHEID, INC; TELEBIT CORP; REVO INC; SOUTH BAY DEVELOPMENT INC				X								Storage and handling of hazardous materials
255 Caspian Drive	11033038	Equinix LLC; GLOBAL CROSSING; EQUINIX OPERATING COMPANY, INC; MISSION WEST PROPERTIES, INC; MICROUNITY SYSTEMS ENGINEERING; INTERCONNECT USA/INTERCONNECT TECH; SARES REGIS GROUP; COM DISCO ELECTRONICS GROUP; SAMMIS CO;			X	X	X					X		Storage and handling of hazardous materials, permitted UST
1235 Bordeaux Drive	11025044	Supertex Inc; LOCKHEED MISSILES & SPACE CO; DIASONICS, INC.;				X	X					X		Storage and handling of hazardous materials
1265 Crossman Avenue	11034026	Google LLC - CRSM1265							X					No significant use of hazardous materials or violations
1300 Chesapeake Terrace	11037011	AT&T MOBILITY - NORTH SUNNYVALE (13260)												No significant use of hazardous materials or violations
	11033029	None identified												None identified
741 1st Avenue	11044006	Verizon Media Bldg B; YAHOO! BLDG B.		X										No significant use of hazardous materials or violations
920 Caribbean Drive	11037002	None identified												None identified
140 Caribbean Drive	11026027	RREEF FUNDS; LOCKHEED MARTIN SPACE SYSTEMS			X									Storage and handling of hazardous materials
1184 N. Mathilda Avenue	11025056	Google LLC - MAT1; VERIZON WIRELESS (LOCKHEED); AT&T Mobility - 5TH - BORDEAUX (USID47736); JUNIPER NETWORKS; L E WENTZ CO		X					X					Storage and handling of hazardous materials
390 Java Drive	11025046	EXIDY INC										X		No significant use of hazardous materials or violations
1250 Borregas Avenue	11034013	CATALYST SEMICONDUCTOR INC; LORAL SPACE AND RANGE SYSTEMS												No significant use of hazardous materials or violations
1330 Orleans Drive	11036013	ULTRA SYSTEMS; PULNIX AMERICA	X					X				X		Storage and handling of hazardous materials
335 E MOFFETT PARK DR	11034005	None identified												None identified
395 JAVA DR	11026048	TERRASENSE, INC; INSIGNIA COMMERCIAL GROUP; GEOMETRICS INC; E.G & G GEOMETRICS; ETNA LIFE INSURANCE	X			X	X					X		Storage and handling of hazardous materials
292 Gibraltar Drive	11034016	None identified												None identified
1312 Crossman Avenue	11036002	Molecular Devices, LLC; MEDTRONIC ANEURX; GOOGLE INC.; MEDTRONIC CARDIO RHYTHM	X	X		X	X							Storage and handling of hazardous materials
1376 Bordeaux Drive	11026050	MAGIC LEAP						X	X	X				Storage and handling of hazardous materials
1330 Geneva Drive	11032024	NETWORK APPLIANCE; ESL, INC.; ESLNA INC.		X							X	X		Reported release of hazardous substances; requires further review
1329 Moffett Park Drive MOFFETT	11037005	LIQUID ROBOTICS INC; LOCKHEED MISSILES AND SPACE CO				X	X	X				X		Storage and handling of hazardous materials
	11032032	None identified												None identified
217 Humboldt Court	11034012	BLOOM ENERGY CORPORATION; LOCKHEED MISSILES & SPACE CO; DEVONG SYSTEMS INCORP.	X		X							X		Storage and handling of hazardous materials
1265 Borregas Avenue	11035006	TATEM OPERATIONS; DCMC SAN FRANCISCO												No significant use of hazardous materials or violations
	11044007	None identified												None identified
1249 Innsbruck Drive	11034002	BR COMMUNICATIONS; GOOGLE LLC	X		X		X					X		Storage and handling of hazardous materials
1391 Geneva Drive	11033019	FIRST SOLAR INC; TRANSLATIONAL BIOSCIENCE			X	X	X							Storage and handling of hazardous materials
	11025042	None identified												None identified

**Table 1
Environmental Risk Review Summary
Moffett Park Specific Plan Area
Sunnyvale, California
Farallon PN: 2481-002**

Draft—Issued for Agency Review

Address	APN	Listed Owners or Operators	Database Listings																				
			AST	CERS HAZ	CERS TANK	CLEANUP SITES	ENVIROSTOR	GEOTRACKER	HAZNET	HHSS	HIST TANK	LUST	RCRA CESQG	RCRA LQG	RCRA NONGEN	RCRA TSD	SANTACLARA CUPA	SANTACLARA HSOL	SANTACLARA LO	SUNNYVALE SUPA	TRIS	UST	
	01535051	None identified																					
1080 Lockheed Martin Way	11027042	ONIZUKA AIR FORCE STATION; ACE SURFACES INC	X					X	X														
360 Caribbean Drive	11026023	RREEFF INC; RREEF U S A FUND 2							X														
1277 Orleans Drive	11036008	ANDERSON GROUP; QUICKLOGIC CORP; ORCHARD PROPERTIES							X														
1313 Geneva Drive	11033031	SOLETRON CORP; DEERFIELD REALITY CO INC; CRYSTALVISION							X					X									
230 Caribbean Drive	11033015	SYSTEMATIC PRECISION INC							X														
1375 Crossman Avenue	11032027	BUILDING M5								X													
1195 Bordeaux Drive	11025035	Baidu USA LLC; Google LLC - MP6; LOCKHEED MISSILES & SPACE CO; SANMINA CORPORATION		X					X					X									
551 Caribbean Drive	11036014	None identified																					
700 1st Avenue	11044001	Verizon Media Bldg E; Yahoo! Bldg E; SVL-NM5 Building E; MARVELL SEMICONDUCTOR		X																			
350 Java Drive	11035011	SPECTRIAN							X														
270 Caribbean Drive	11033017	Iron Construction, Inc.; LOCKHEED MISSILES & SPACE CO; EXLEY MIXON INC DBA M-CUBEDL; M-CUBED							X					X									
1320 Orleans Drive	11036012	Parker Hannifin Corp.; ARTIFICIAL MUSCLE INC							X														
1155 Borregas Avenue	11035019	GOOGLE LLC		X										X									
380 Caribbean Drive	11026021	LORAL SPACE & RANGE SYSTEM; ORCHARD FACILITY SERVICES							X														
352 Java Drive	11034024	Asante Solutions, Inc.; ASANTE SOLUTIONSNA INC.							X														
1080 Enterprise Way	11057002	MOFFETT TOWERS		X																			
	11035027	None identified																					
1255 Orleans Drive	11036009	None identified																					
	11032034	None identified																					
256 Gibraltar Drive	11034015	GOOGLE LLC												X									
245 Caspian Drive	11033037	None identified																					
1160 N. Mathilda Avenue	11027046	GOOGLE LLC - MP5; BUILDING 5		X																			
1050 Innovation Way	11027040	None identified																					
1230 Crossman Avenue	11036021	None identified																					
1160 Enterprise Way	11057006	Micro Focus- Building G; MOFFETT TOWERS BUILDING G; JAY PAULCO; RUDOLPH & SLECTEN CONSTRUCTION INC		X					X					X									

Table 1
Environmental Risk Review Summary
Moffett Park Specific Plan Area
Sunnyvale, California
Farallon PN: 2481-002

Draft—Issued for Agency Review

Address	APN	Listed Owners or Operators	Historical Findings									Risk Evaluation		
			Halogenated Solvents	Petroleum products	Waste oil	Laboratory or photochemical waste	Other hazardous materials	Administrative violations	Handling violations	Historic tanks or sumps	Listed prior to 1990		Known release of hazardous substances	
	01535051	None identified											None identified	
1080 Lockheed Martin Way	11027042	ONIZUKA AIR FORCE STATION; ACE SURFACES INC		X						X	X	X	X	Reported release of hazardous substances; requires further review
360 Caribbean Drive	11026023	RREEFF INC; RREEF U S A FUND 2												No significant use of hazardous materials or violations
1277 Orleans Drive	11036008	ANDERSON GROUP; QUICKLOGIC CORP; ORCHARD PROPERTIES			X									Storage and handling of hazardous materials
1313 Geneva Drive	11033031	SOLECTRON CORP; DEERFIELD REALITY CO INC; CRYSTALVISION			X		X					X		Storage and handling of hazardous materials
230 Caribbean Drive	11033015	SYSTEMATIC PRECISION INC			X									Storage and handling of hazardous materials
1375 Crossman Avenue	11032027	BUILDING M5								X				Historic tank, requires further review
1195 Bordeaux Drive	11025035	Baidu USA LLC; Google LLC - MP6; LOCKHEED MISSILES & SPACE CO; SANMINA CORPORATION					X	X	X					Storage and handling of hazardous materials
551 Caribbean Drive	11036014	None identified												None identified
700 1st Avenue	11044001	Verizon Media Bldg E; Yahoo! Bldg E; SVL-NM5 Building E; MARVELL SEMICONDUCTOR					X	X	X					Storage and handling of hazardous materials
350 Java Drive	11035011	SPECTRIAN	X				X					X		Storage and handling of hazardous materials
270 Caribbean Drive	11033017	Iron Construction, Inc.; LOCKHEED MISSILES & SPACE CO; EXLEY MIXON INC DBA M-CUBEDL; M-CUBED					X					X		Storage and handling of hazardous materials
1320 Orleans Drive	11036012	Parker Hannifin Corp.; ARTIFICIAL MUSCLE INC					X							Storage and handling of hazardous materials
1155 Borregas Avenue	11035019	GOOGLE LLC												No significant use of hazardous materials or violations
380 Caribbean Drive	11026021	LORAL SPACE & RANGE SYSTEM; ORCHARD FACILITY SERVICES					X							No significant use of hazardous materials or violations
352 Java Drive	11034024	Asante Solutions, Inc.; ASANTE SOLUTIONSNA INC.					X							No significant use of hazardous materials or violations
1080 Enterprise Way	11057002	MOFFETT TOWERS						X						No significant use of hazardous materials or violations
	11035027	None identified												None identified
1255 Orleans Drive	11036009	None identified												None identified
	11032034	None identified												None identified
256 Gibraltar Drive	11034015	GOOGLE LLC												No significant use of hazardous materials or violations
245 Caspian Drive	11033037	None identified												None identified
1160 N. Mathilda Avenue	11027046	GOOGLE LLC - MP5; BUILDING 5						X						No significant use of hazardous materials or violations
1050 Innovation Way	11027040	None identified												None identified
1230 Crossman Avenue	11036021	None identified												None identified
1160 Enterprise Way	11057006	Micro Focus- Building G; MOFFETT TOWERS BUILDING G; JAY PAULCO; RUDOLPH & SLECTEN CONSTRUCTION INC			X		X	X						Storage and handling of hazardous materials

**Table 2
Properties Requiring Further Evaluation
Moffett Park Specific Plan Area
Sunnyvale, California
Farallon PN: 2481-002**

Address	Facility Name	Cleanup Status	Potential Contaminants of Concern	Potential Media of Concern	Notes	Recommendations
1230 Bordeaux Drive	DII Orbit Semiconductor (former) (SL1823J1134)	Completed - Case Closed as of 3/20/2003	Tetrachloroethylene (PCE)	None specified	No source was found on-site and minor concentrations of PCE were found to impact the tidal stream 100' from the building; Site visit - older building, contains several external enclosures (GW treatment system?)	File Review
1320 Bordeaux Drive	1320-1322 Bourdoux Drive (SL0608552478)	Completed - Case Closed as of 7/24/2015	Tetrachloroethylene (PCE)	Aquifer used for drinking water supply	No source was found on-site and minor concentrations of PCE were thought to have come from an up gradient source; Site visit - external enclosures (GW treatment system?), large AST type structure?	None
141 Caspian Court	AC Ball Menlo Caspian (T0608591628)	Completed - Case Closed as of 2/18/2004	None specified (GeoTracker); tetrachloroethylene, trichloroethylene, 1,1,1-trichloroethane, 1,1-dichloroethylene, 1,2-dichloroethylene, 1,1-dichloroethane, and 1,4-dioxane (NFA)	Groundwater	Site operations included aluminum finishing, vapor degreasing, painting, welding, assembly, and testing; LUSTs released chlorinated solvents to soil and GW during site operations; NFA indicates that "The groundwater extraction and treatment system has reduced groundwater pollution to asymptotic levels and it is expected that natural attenuation will further reduce contaminant levels."; Site visit - Currently being developed as part of a much larger development project that extends from Borregas Ave to Bordeaux Dr and Caspian Ct to W Caribbean Pkwy	File Review
495 E. Java Drive		Hazardous material spill; stopped and contained	Non-PCB Transformer oil	surface soil	a release of approx 3 gallons of non-PCB transformer oil was reported; spill was contained and no further action required; Site visit - Recently redeveloped into commercial office building, no indications of spills or leaks	None
215 E. Moffett Park Drive	Moffett Park Dr / McCandless Dev	Open - Inactive as of 6/15/2016	Other chlorinated hydrocarbons	Aquifer used for drinking water supply	elevated butylbenzene in 1988; follow-up sampling in 2004 did not identify elevated VOCs; SVOCs and TPH were ND ; Site visit - recently redeveloped commercial office building, no signs of spills or leaks	None
480 East Java Drive	Lockheed Corporation (T10000006816)	Completed - Case Closed as of 1/23/2020	Benzene, chromium, ethylbenzene, nickel, waste oil / motor / hydraulic / lubricating, xylene	Groundwater, sediments, soil, soil vapor, surface water	soil excavation in 2000 and 2001; soil vapor sampling identified elevated benzene; redeveloped in 2014; Site visit - New parking lot, no indications of spills or leaks	File Review
165 Gibraltar Court	Pan American Savings (T0608591767)	Completed - Case Closed as of 5/26/1993	Solvents	Groundwater	No source was found on-site and minor concentrations of VOCs were thought to have come from an up gradient source; Site visit - recently redeveloped into a commercial office building, no signs of spills or leaks	None
1111 Lockheed Martin Way	Lockheed Sunnyvale - Plant One Facility (SL1821F605)	Open - Remediation	1,1,1-Trichloroethane, benzene, chromium, gasoline, nitrate, tetrachloroethylene, toluene, trichloroethylene, xylene	Groundwater	Two distinct zones of gw impact; extraction and treatment in operation since 1993; in-situ biological remediation is under consideration. TPH in soil and gw associated with UST leaks and spills; all TPH impacts have been remediated and no further cleanup action requirements.	File Review
1111 Lockheed Martin Way	Lockheed Sunnyvale - Moffett Towers II (Former Parcels 2 and 4SW)	Completed - Case Closed as of 5/12/2020	Chromium VI, total petroleum hydrocarbons, trichloroethylene	Soil, soil vapor	identified in 2015 during redevelopment. most impacts related to hex chrome; soil removal performed; remediation has resulted in removal of all potential residual VOC sources.	None
1111 Lockheed Martin Way	Lockheed Corporation (T10000007981)	Informational Item as of 11/16/2015	Arsenic, chromium, copper, lead, mercury, nickel, silver, zinc	None specified	PhI/PhII identified PCE, TCE, benzene in soil gas and soil near sumps (Bldg 204/205); soil remediation and mgmt plan in 2017 but unclear if redevelopment occurred	File Review
1111 Lockheed Martin Way	Lockheed Sunnyvale - Plant One Facility - Building 109 USTs	Completed - Case Closed as of 11/2/2009	Gasoline	Groundwater	Three 10,000-gallon gasoline USTs removed in 1989; TPH has been remediated and no requirements	None
1111 Lockheed Martin Way	Lockheed Sunnyvale - PWTRF (L10006914105)	Open - operating as of 9/21/2015	None specified	None specified	land disposal site for wastewater holding ponds and evaporation ponds; gw is monitored	None
1111 Lockheed Martin Way						

**Table 2
Properties Requiring Further Evaluation
Moffett Park Specific Plan Area
Sunnyvale, California
Farallon PN: 2481-002**

Address	Facility Name	Cleanup Status	Potential Contaminants of Concern	Potential Media of Concern	Notes	Recommendations
1319 Moffett Park Drive	Consolidated Freightways, Inc. (T0608500454)	Completed - Case Closed as of 1/25/1996	Gasoline	Groundwater	three 10,000 gallon and one 550 gallon USTs removed from the site in 1989; cause of release unknown; NFA letter doesn't provide case summary; Site visit - building has multiple haz mat signs posted, rollup doors across north face of the building	File Review
1135 N. Mathilda Avenue	Moffett Park Auto Center	Completed - Case Closed as of 6/23/2000	Gasoline	Groundwater	two 5,000 gallon; two 6,000 gallon; one 20,000 gallon gasoline tanks and one unknown waste oil tank; closed with contamination in place; Site visit - park with walking path, no buildings built on top of this address	File Review
1235 N. Mathilda Avenue	Sunnyvale Naval Industrial Reserve Ordnance Plant (T0608576849)	Open - Remediation as of 6/1/2018	None specified	None specified	See: Lockheed Plant One Facility for info	None
1194 N. Mathilda Avenue		Hazardous material spill; stopped and contained	Paint and associated products	Surface soil	leaking package from truck was identified; leak was cleaned up and no further action reported; Site visit - address contains Google building 1194, no evidence of impacts/spill	None
1080 Lockheed Martin Way	Onizuka Air Force Base	Informational Item as of 8/3/2017	Gasoline, BTEX, jet fuel	Shallow groundwater, shallow soil	Several tanks removed in 1994; confirmation sampling indicated all contaminated soil was removed. Relatively low levels of groundwater dewatered from tank pit and discharged to sanitary sewer.	File review

APPENDIX A
ERIS HISTORICAL AERIALS, MOFFETT PARK SPECIFIC PLAN AREA

ENVIRONMENTAL EVALUATION REPORT
Moffett Park Specific Plan
Sunnyvale, California

Farallon PN: 2481-002



HISTORICAL AERIALS

Project Property: Moffett Park Specific Plan Area
Moffett Park Specific Plan Area
Sunnyvale CA

Requested By: Farallon Consulting

Order No: 20300100487

Data Completed: October 08,2020

Date	Source	Source Scale	Comments
2020	National Agriculture Information Program	1" to 1500'	
2018	National Agriculture Information Program	1" to 1500'	
2016	National Agriculture Information Program	1" to 1500'	
2014	National Agriculture Information Program	1" to 1500'	
2012	National Agriculture Information Program	1" to 1500'	
2010	National Agriculture Information Program	1" to 1500'	
2009	National Agriculture Information Program	1" to 1500'	
2006	National Agriculture Information Program	1" to 1500'	
2005	National Agriculture Information Program	1" to 1500'	
2004	National Agriculture Information Program	1" to 1500'	
2003	National Agriculture Information Program	1" to 1500'	
1991	US Geological Survey	1" to 1500'	
1982	National High Altitude Photography	1" to 1500'	
1974	US Geological Survey	1" to 1500'	
1968	US Geological Survey	1" to 1500'	
1960	US Geological Survey	1" to 1500'	
1954	Army Mapping Service	1" to 1500'	
1948	Agriculture and Soil Conservation Service	1" to 1500'	
1939	Private Company	1" to 1500'	Best Copy Available

Environmental Risk Information Services

A division of Glacier Media Inc.

1.866.517.5204 | info@erisinfo.com | erisinfo.com

one inch



Year:2020
Source:NAIP
Scale:1" to 1500'
Comment:

Address:Moffett Park Specific Plan Area,
Sunnyvale, CA
Approx Center:37.41405/-122.01821

Order No:20300100487

ERIS
ENVIRONMENTAL RISK INFORMATION SERVICES



one inch



Year:2018
Source:NAIP
Scale:1" to 1500'
Comment:

Address:Moffett Park Specific Plan Area,
Sunnyvale, CA
Approx Center:37.41405/-122.01821

Order No:20300100487

ERIS
ENVIRONMENTAL RISK INFORMATION SERVICES



one inch



Year:2016
Source:NAIP
Scale:1" to 1500'
Comment:

Address:Moffett Park Specific Plan Area,
Sunnyvale, CA
Approx Center:37.41405/-122.01821

Order No:20300100487

ERIS
ENVIRONMENTAL RISK INFORMATION SERVICES



one inch



Year:2014
Source:NAIP
Scale:1" to 1500'
Comment:

Address:Moffett Park Specific Plan Area,
Sunnyvale, CA
Approx Center:37.41405/-122.01821

Order No:20300100487

ERIS
ENVIRONMENTAL RISK INFORMATION SERVICES



one inch



Year:2012
Source:NAIP
Scale:1" to 1500'
Comment:

Address:Moffett Park Specific Plan Area,
Sunnyvale, CA
Approx Center:37.41405/-122.01821

Order No:20300100487

ERIS
ENVIRONMENTAL RISK INFORMATION SERVICES



one inch



Year:2010
Source:NAIP
Scale:1" to 1500'
Comment:

Address:Moffett Park Specific Plan Area,
Sunnyvale, CA
Approx Center:37.41405/-122.01821

Order No:20300100487



one inch



Year:2009

Address:Moffett Park Specific Plan Area,
Sunnyvale, CA

Order No:20300100487

Source:NAIP

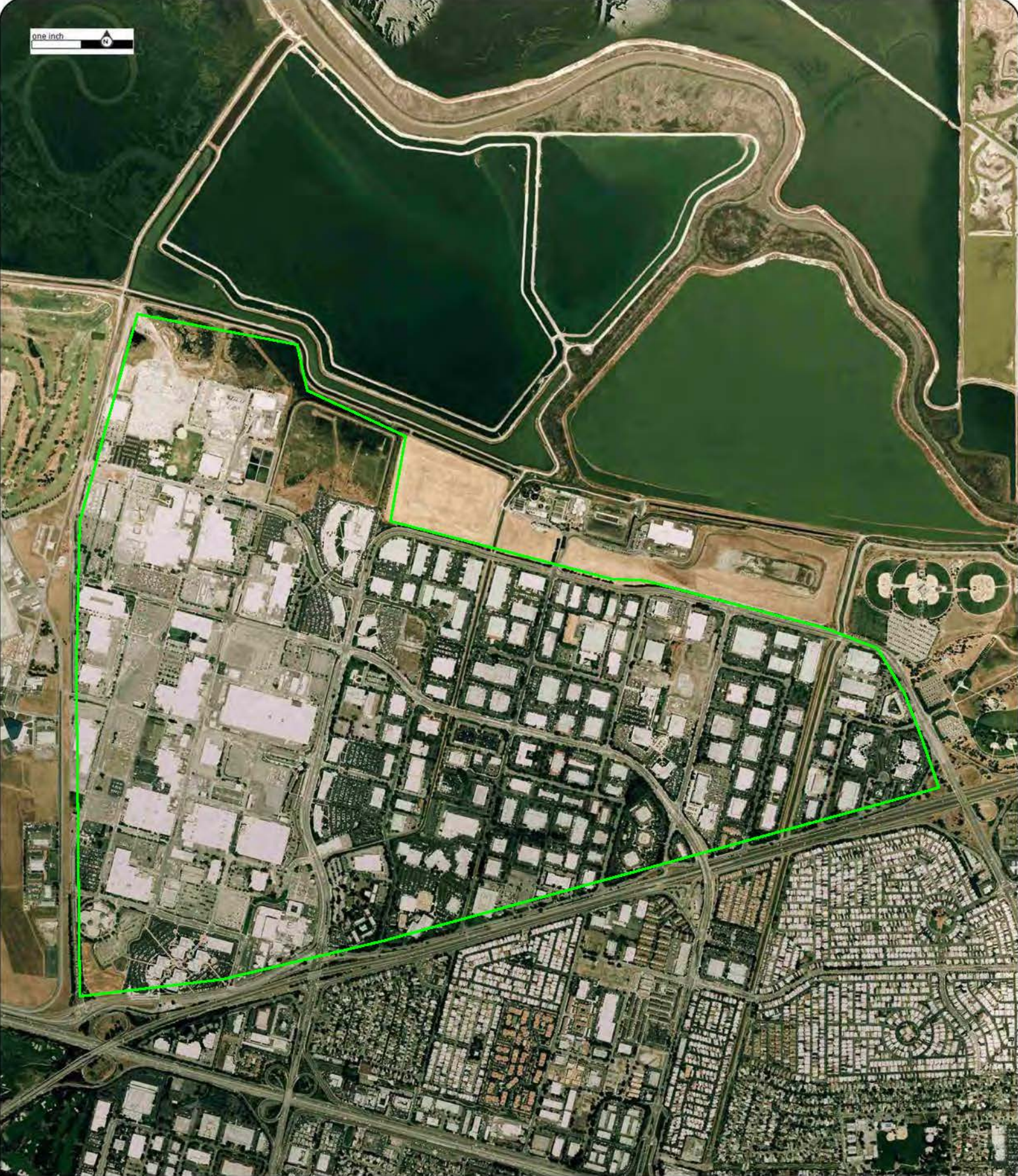
Scale:1" to 1500'

Approx Center:37.41405/-122.01821

Comment:



one inch



Year:2006
Source:NAIP
Scale:1" to 1500'
Comment:

Address:Moffett Park Specific Plan Area,
Sunnyvale, CA
Approx Center:37.41405/-122.01821

Order No:20300100487



one inch



Year:2005
Source:NAIP
Scale:1" to 1500'
Comment:

Address:Moffett Park Specific Plan Area,
Sunnyvale, CA
Approx Center:37.41405/-122.01821

Order No:20300100487

ERIS
ENVIRONMENTAL RISK INFORMATION SERVICES



one inch 



Year:2004
Source:NAIP
Scale:1" to 1500'
Comment:

Address:Moffett Park Specific Plan Area,
Sunnyvale, CA
Approx Center:37.41405/-122.01821

Order No:20300100487



one inch



Year:2003
Source:NAIP
Scale:1" to 1500'
Comment:

Address:Moffett Park Specific Plan Area,
Sunnyvale, CA
Approx Center:37.41405/-122.01821

Order No:20300100487

ERIS
ENVIRONMENTAL RISK INFORMATION SERVICES



one inch



Year:1991
Source:USGS
Scale:1" to 1500'
Comment:

Address:Moffett Park Specific Plan Area,
Sunnyvale, CA
Approx Center:37.41405/-122.01821

Order No:20300100487



one inch



Year:1982

Address:Moffett Park Specific Plan Area,
Sunnyvale, CA

Order No:20300100487

Source:NHAP

Approx Center:37.41405/-122.01821

Scale:1" to 1500'

Comment:

ERIS
ENVIRONMENTAL RISK INFORMATION SERVICES



one inch

6-144



Year:1974
Source:USGS
Scale:1" to 1500'
Comment:

Address:Moffett Park Specific Plan Area,
Sunnyvale, CA
Approx Center:37.41405/-122.01821

Order No:20300100487

ERIS
ENVIRONMENTAL RISK INFORMATION SERVICES



one inch

- 68

1 - 159



Year:1968
Source:USGS
Scale:1" to 1500'
Comment:

Address:Moffett Park Specific Plan Area,
Sunnyvale, CA
Approx Center:37.41405/-122.01821

Order No:20300100487



one inch



Year:1960
Source:USGS
Scale:1" to 1500'
Comment:

Address:Moffett Park Specific Plan Area,
Sunnyvale, CA
Approx Center:37.41405/-122.01821

Order No:20300100487

ERIS
ENVIRONMENTAL RISK INFORMATION SERVICES



one inch



Year:1954
Source:AMS
Scale:1" to 1500'
Comment:

Address:Moffett Park Specific Plan Area,
Sunnyvale, CA
Approx Center:37.41405/-122.01821

Order No:20300100487

ERIS
ENVIRONMENTAL RISK INFORMATION SERVICES



one inch



Year:1948
Source:ASCS
Scale:1" to 1500'
Comment:

Address:Moffett Park Specific Plan Area,
Sunnyvale, CA
Approx Center:37.41405/-122.01821

Order No:20300100487

ERIS
ENVIRONMENTAL RISK INFORMATION SERVICES



one inch 



Year:1939

Address:Moffett Park Specific Plan Area,
Sunnyvale, CA

Order No:20300100487

Source:FAIRCHILD

Scale:1" to 1500'

Approx Center:37.41405/-122.01821

Comment:Best Copy Available

ERIS
ENVIRONMENTAL RISK INFORMATION SERVICES



**APPENDIX B
SITE RECONNAISSANCE PHOTOLOG**

ENVIRONMENTAL EVALUATION REPORT
Moffett Park Specific Plan
Sunnyvale, California

Farallon PN: 2481-002

SITE RECONNAISSANCE PHOTOLOG

Environmental Evaluation Report

Moffett Park Specific Plan Area

Sunnyvale, California

Farallon PN: 2481-002

Photograph 1: 1135 North Mathilda Avenue, a grass park associated with 1133 Innovation Way.

Photograph 2: 1194 North Mathilda Avenue, Google Building 1194.

Photograph 3: 1230 Bordeaux Drive, possible groundwater treatment system enclosure.

Photograph 4: 1319 Moffett Park Drive, hazardous materials sign and rolling doors.

Photograph 5: 1320 Bordeaux Drive, enclosures possibly associated with a groundwater treatment system.

Photograph 6: 141 Caspian Court, development includes this address within a much larger development area.

Photograph 7: 165 Gibraltar Court, recently redeveloped into a commercial office building.

Photograph 8: 215 East Moffett Park Drive, recently redeveloped into a commercial office building.

Photograph 9: East side of Geneva Drive between East Caribbean Drive and Caspian Drive, large stockpile.

Photograph 10: East side of Geneva Drive between East Caribbean Drive and Caspian Drive, new parking lot.

Photograph 11: Center of block bounded by East Caribbean Drive, Borregas Drive, Caspian Drive and Geneva Drive, empty lot.

Photograph 12: Center of block bounded by East Caribbean Drive, Borregas Drive, Caspian Drive and Geneva Drive, empty lot with parking lot.

Photograph 13: Intersection of Bordeaux Drive and West Java Drive, Northwest and Southwest Corners, southern lot.

Photograph 14: Intersection of Bordeaux Drive and West Java Drive, Northwest and Southwest Corners, northern lot.

Photograph 15: Former Industrial Area northeast of E Street and 11th Avenue, stockpile mounds and construction debris.

Photograph 16: Former Industrial Area northeast of E Street and 11th Avenue, stockpile mounds and construction debris.



SITE RECONNAISSANCE PHOTOLOG (continued)
Environmental Evaluation Report
Moffett Park Specific Plan Area



Photograph 1: 1135 North Mathilda Avenue, a grass park associated with 1133 Innovation Way.



Photograph 2: 1194 North Mathilda Avenue, Google Building 1194.



SITE RECONNAISSANCE PHOTOLOG (continued)
Environmental Evaluation Report
Moffett Park Specific Plan Area
Sunnyvale, California



Photograph 3: 1230 Bordeaux Drive, possible groundwater treatment system enclosure.



Photograph 4: 1319 Moffett Park Drive, hazardous materials sign and rolling doors.



SITE RECONNAISSANCE PHOTOLOG (continued)
Environmental Evaluation Report
Moffett Park Specific Plan Area
Sunnyvale, California



Photograph 5: 1320 Bordeaux Drive, enclosures possibly associated with a groundwater treatment system.



Photograph 6: 141 Caspian Court, development includes this address within a much larger development area.



SITE RECONNAISSANCE PHOTOLOG (continued)
Environmental Evaluation Report
Moffett Park Specific Plan Area
Sunnyvale, California



Photograph 7: 165 Gibraltar Court, recently redeveloped into a commercial office building.



Photograph 8: 215 East Moffett Park Drive, recently redeveloped into a commercial office building.



SITE RECONNAISSANCE PHOTOLOG (continued)
Environmental Evaluation Report
Moffett Park Specific Plan Area
Sunnyvale, California



Photograph 9: East side of Geneva Drive between East Caribbean Drive and Caspian Drive, large stockpile.



Photograph 10: East side of Geneva Drive between East Caribbean Drive and Caspian Drive, new parking lot.



SITE RECONNAISSANCE PHOTOLOG (continued)
Environmental Evaluation Report
Moffett Park Specific Plan Area
Sunnyvale, California



Photograph 11: Center of block bounded by East Caribbean Drive, Borregas Drive, Caspian Drive and Geneva Drive, empty lot.



Photograph 12: Center of block bounded by East Caribbean Drive, Borregas Drive, Caspian Drive and Geneva Drive, empty lot with parking lot.



SITE RECONNAISSANCE PHOTOLOG (continued)
Environmental Evaluation Report
Moffett Park Specific Plan Area
Sunnyvale, California



Photograph 13: Intersection of Bordeaux Drive and West Java Drive, Northwest and Southwest Corners, southern lot.



Photograph 14: Intersection of Bordeaux Drive and West Java Drive, Northwest and Southwest Corners, northern lot.



SITE RECONNAISSANCE PHOTOLOG (continued)
Environmental Evaluation Report
Moffett Park Specific Plan Area
Sunnyvale, California



Photograph 15: Former Industrial Area northeast of E Street and 11th Avenue, stockpile mounds and construction debris.



Photograph 16: Former Industrial Area northeast of E Street and 11th Avenue, stockpile mounds and construction debris.