

Technical Memorandum

TO: AECOM
c/o Allie Beauregard

FROM: Terry A. Hayes Associates Inc.

DATE: November 19, 2021

RE: **Energy Resources Impacts Assessment for the Alta Cuvee Mixed Use Project**

SUMMARY

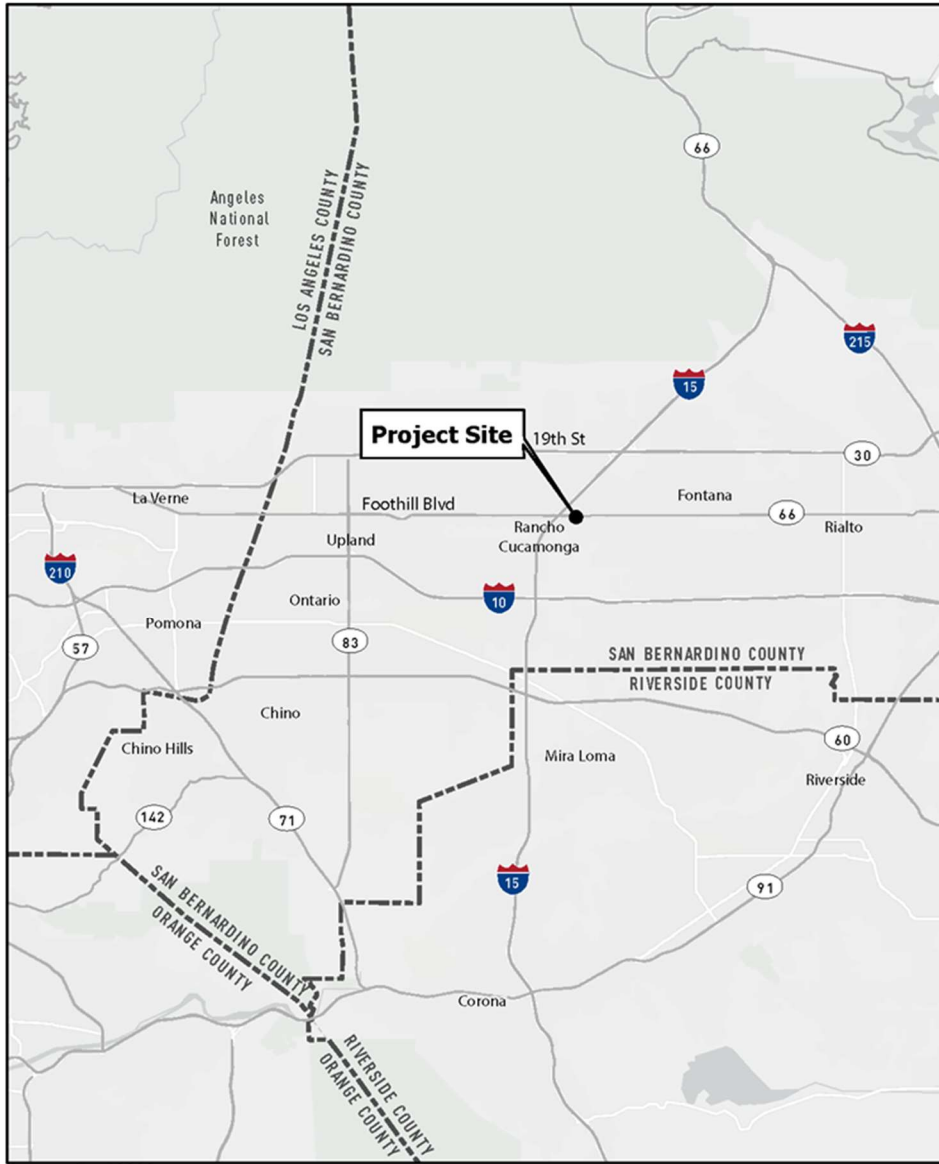
The purpose of this Technical Memorandum is to evaluate potential energy resource impacts in accordance with California Environmental Quality Act (CEQA) requirements for the Alta Cuvee Mixed-Use Project (proposed project). The proposed project would not result in a significant energy resource impact in the context of the Appendix G Environmental Checklist criteria of the CEQA Guidelines during construction or operational activities.

PROJECT DESCRIPTION

The proposed project involves the construction of two four-story, 260-unit apartment community located at 12901-12939 Foothill Boulevard in the City of Rancho Cucamonga. The project site is bound by Foothill Boulevard, a vacant lot, and condominiums to the north; Etiwanda Avenue and a shopping center to the west; and residential single-family homes to the south and east. The 5.56-acre vacant and undeveloped site is comprised of two parcels (Assessor's Parcel Numbers (APN) 0229-311-14 and 0229-311-15). **Figures 1 and 2** show the Regional Location and the Project Location, respectively. **Figure 3** illustrates the Site Plan.

The proposed project would include two four-story buildings with 259 apartments units (approximately 225,079 square feet) and one live-work unit (approximately 1,570 square feet). The center of the west building would have a courtyard with a pool and spa (comprising approximately 3,572 square feet), and the center of the east building would have a courtyard. The proposed project would also include commercial space totaling 2,436 square feet, and approximately 5,537 square feet of ancillary office and lobby space. Vehicular access to the project site would be provided off Etiwanda Avenue and along eastbound Foothill Boulevard. Both locations would provide access to the surface parking area and to the south-facing entrance/exit of the subterranean garage. The proposed project would provide 465 total parking spaces: 200 surface parking spaces and 265 garage parking spaces. The proposed project would also construct an 11-foot wide and 62-foot long bus bay on eastbound Foothill Boulevard to accommodate the Omnitrans Transit Agency's bus transit Route 66 and other potential future bus service.

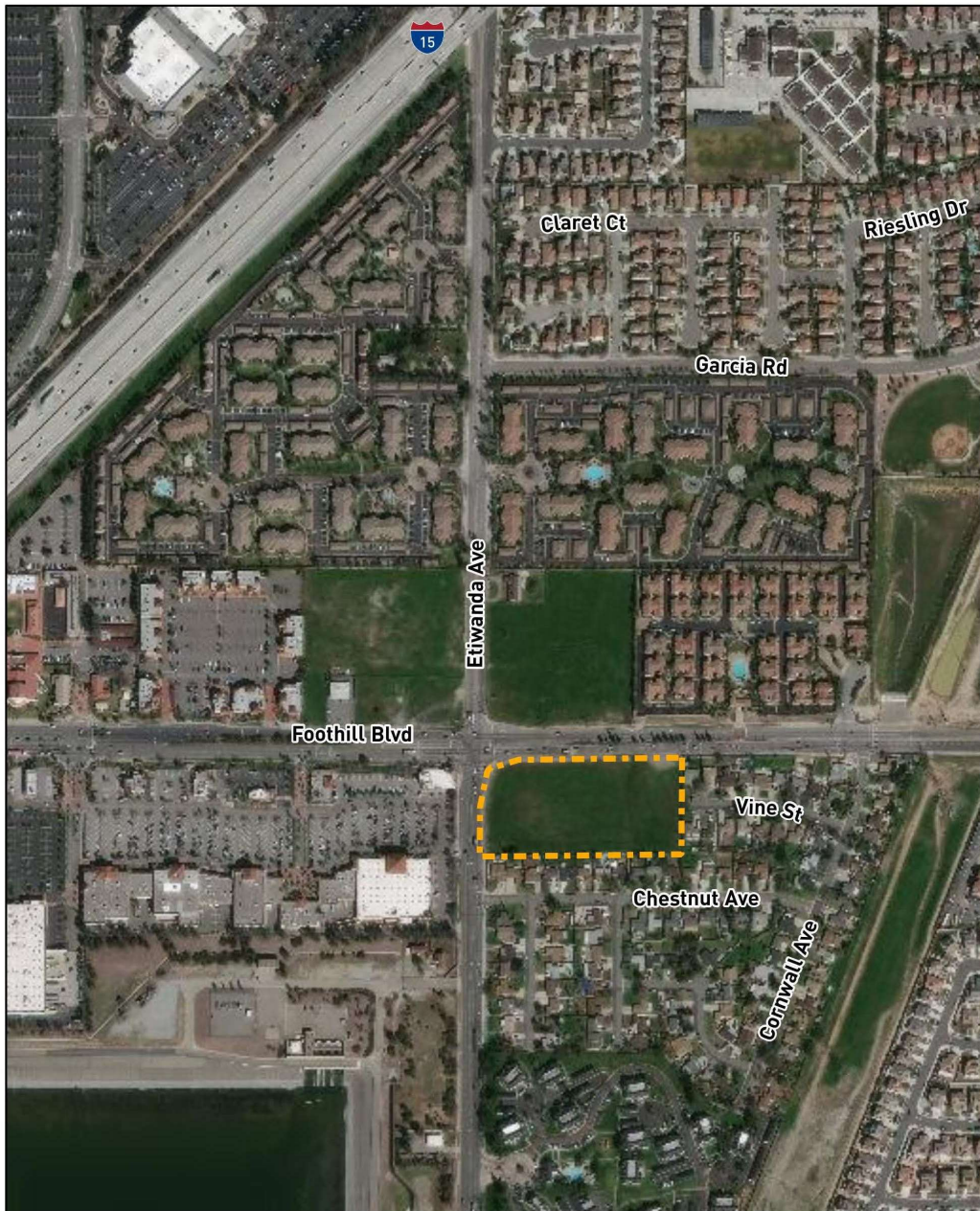
Figure 1: Regional Location



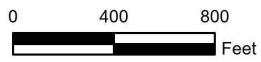
Source: Esri 2021



Figure 2: Project Location



Source: ESRI 2018



 Project Site

Figure 3: Site Plan



Construction of the proposed project is anticipated to begin in March 2022 and take approximately 24 months to complete, concluding in early 2024. Construction activities would occur Monday through Saturday from 7:00 a.m. to 7:00 p.m. The construction period would include excavation and grading activities, installation of building foundations and utilities, and installation of landscaping and hardscape elements. Approximately, 52,010 cubic yards of material would be excavated as part of the proposed project of which approximately 31,770 cubic yards would be hauled away from the project site. Approximately 20,240 cubic yards of material would remain on the project site to be used as backfill.

ENERGY TOPICAL INFORMATION

Transportation Fuels

California was the fourth largest producer of crude oil among the 50 states in 2017, after Texas, North Dakota, and Alaska, and, as of January 2018, third in oil refining capacity after Texas and Louisiana. In 2018, California produced approximately 169,166 thousand barrels of crude oil.¹ In California, approximately 16.3 billion gallons of gasoline and 4.3 billion gallons of diesel, including off-road diesel were sold and consumed in 2018. Approximately 97 percent of all gasoline consumed in California is utilized by light-duty cars, pickup trucks, and sport utility vehicles. Nearly all heavy-duty trucks, delivery vehicles, buses, trains, ships, boats and barges, farm, construction, and heavy-duty military vehicles have diesel engines.²

Electricity Supply

California consumed approximately 201,784,204 megawatt hours (mWh) of electricity in 2019.³ Approximately 35 percent of electricity was consumed by residential users and 45 percent by commercial users. Industrial users consumed approximately 19 percent of electricity and approximately one percent was used to power vehicles. Electricity to the project site will be provided by Rancho Cucamonga Municipal Utility (RCMU). RCMU's energy portfolio is made up of approximately 70.0 percent unspecified sources of power (electricity from transactions that are not traceable to specific generation sources), 23.7 percent renewables (wind, solar, eligible hydroelectric, and geothermal), and 6.3 percent large hydroelectric.⁴

Natural Gas

California consumed approximately 2,136,907 million cubic feet of natural gas in 2018.⁵ Approximately 37 percent of natural gas was consumed by industrial users, followed by 30 percent for electric power generation, 20 percent for residential, 12 percent for commercial, and one percent for vehicle fuel in 2018.⁶ Natural gas is provided and distributed to the project area by the Southern California Gas Company (SoCalGas). According to the 2018 California Gas Report, SoCalGas is expected to provide an average of 5,738 million metric cubic feet (MMcf) per day by 2022. SoCalGas anticipates total gas demand to decline at an annual rate of 0.5 percent from 2018 to 2035. This decline in throughput demand can be attributed to modest economic growth, California Public Utilities Commission (CPUC) energy efficiency standards mandates and programs, tighter standards created by revised Title 24 Codes and Standards, renewable

¹U.S. Energy Information Administration, *California State Energy Profile 2019*, November 2, 2020.

²California Energy Commission, *Energy Almanac*, <https://www.energy.ca.gov/data-reports/energy-almanac>, accessed October 13, 2020.

³U.S. Energy Information Administration, *California State Electricity Profile 2019*, November 2, 2020.

⁴Rancho Cucamonga Municipal Utility, 2019 Power Content Label, October 2020.

⁵U.S. Energy Information Administration, *California Natural Gas Consumption by End Use*, December 31, 2019.

⁶*Ibid.*

electricity goals, the decline in commercial and industrial demand, and conservation savings linked to Advanced Metering Infrastructure.⁷

REGULATORY FRAMEWORK

The following provides a brief summary of energy regulations and policies. This is a not an exhaustive list of all regulations and policies.

Federal

Federal Energy Policy and Conservation Act. In 1975, Congress enacted the Federal Energy Policy and Conservation Act, which established the first fuel economy standards for on-road motor vehicles in the United States. Pursuant to the Act, the National Highway Traffic Safety Administration is responsible for establishing additional vehicle standards. In 2012, new fuel economy standards for passenger cars and light trucks were approved for model years 2017 through 2021 (*77 Federal Register* 62624–63200). Fuel economy is determined based on each manufacturer’s average fuel economy for the fleet of vehicles available for sale in the United States.

Energy Independence and Security Act of 2007. On December 19, 2007, the Energy Independence and Security Act of 2007 (EISA) was signed into law. In addition to setting increased Corporate Average Fuel Economy standards for motor vehicles, the EISA includes the following provisions related to energy efficiency:

- Renewable Fuel Standard (RFS) (Section 202)
- Appliance and Lighting Efficiency Standards (Sections 301–325)
- Building Energy Efficiency (Sections 411–441)

This federal legislation requires ever-increasing levels of renewable fuels to replace petroleum. The U.S. Environmental Protection Agency (USEPA) is responsible for developing and implementing regulations to ensure that transportation fuel sold in the United States contains a minimum volume of renewable fuel. The RFS program regulations were developed in collaboration with refiners, renewable fuel producers, and many other stakeholders.

The RFS program was created under the Energy Policy Act of 2005 and established the first renewable fuel volume mandate in the United States. As required under the Act, the original RFS program (RFS1) required 7.5 billion gallons of renewable fuel to be blended into gasoline by 2012. Under the EISA, the RFS program was expanded in several key ways that lay the foundation for achieving significant reductions in greenhouse gas (GHG) emissions from the use of renewable fuels, reducing imported petroleum, and encouraging the development and expansion of the renewable fuels sector in the United States. The updated program is referred to as “RFS2” and includes the following:

- EISA expanded the RFS program to include diesel, in addition to gasoline.
- EISA increased the volume of renewable fuel required to be blended into transportation fuel from nine billion.
- EISA established new categories of renewable fuel, and set separate volume requirements for each one.
- EISA required the USEPA to apply lifecycle GHG performance threshold standards to ensure that each category of renewable fuel emits fewer GHGs than the petroleum fuel it replaces.

⁷California Gas and Electric Utilities, *2018 California Gas Report*, 2018.

Additional provisions of the EISA address energy savings in government and public institutions, research for alternative energy, additional research in carbon capture, international energy programs, and the creation of “green” jobs.

State

Warren-Alquist Act. The California Legislature passed the Warren-Alquist Act in 1974. The Warren-Alquist Act created the California Energy Commission (CEC). The legislation also incorporated the following three key provisions designed to address the demand side of the energy equation:

- It directed the CEC to formulate and adopt the nation’s first energy conservation standards for both buildings constructed and appliances sold in California.
- The Act removed the responsibility of electricity demand forecasting from the utilities, which had a financial interest in high-demand projections, and transferred it to a more impartial CEC.
- The CEC was directed to embark on an ambitious research and development program, with a particular focus on fostering what were characterized as non-conventional energy sources.

State of California Energy Action Plan. The CEC and CPUC approved the first State of California Energy Action Plan in 2003. The plan established shared goals and specific actions to ensure that adequate, reliable, and reasonably priced electrical power and natural gas supplies are provided, and identified policies, strategies, and actions that are cost-effective and environmentally sound for California’s consumers and taxpayers. In 2005, a second Energy Action Plan was adopted by the CEC and CPUC to reflect various policy changes and actions of the prior two years.

At the beginning of 2008, the CEC and CPUC determined that it was not necessary or productive to prepare a new energy action plan. This determination was based, in part, on a finding that the state’s energy policies have been significantly influenced by the passage of Assembly Bill (AB) 32, the California Global Warming Solutions Act of 2006 (discussed below). Rather than produce a new energy action plan, the CEC and CPUC prepared an “update” that examines the state’s ongoing actions in the context of global climate change.

Senate Bills 1078 (2002), 107 (2006), X1-2 (2011), 350 (2015), and 100 (2018). Senate Bill (SB) 1078 established the California Renewables Portfolio Standard (RPS) Program and required that a retail seller of electricity purchase a specified minimum percentage of electricity generated by eligible renewable energy resources as defined in any given year, culminating in a 20-percent standard by December 31, 2017. These retail sellers include electrical corporations, community choice aggregators, and electric service providers. The bill also required the CEC to certify eligible renewable energy resources, design and implement an accounting system to verify compliance with the RPS by retail sellers, and allocate and award supplemental energy payments to cover above-market costs of renewable energy. SB 107 accelerated the RPS established by SB 1078 by requiring that 20 percent of electricity retail sales be served by renewable energy resources by 2010 (not 2017). Additionally, SB X1-2 requires all California utilities to generate 33 percent of their electricity from eligible renewable energy resources by 2020. Specifically, SB X1-2 sets a three-stage compliance period: by December 31, 2013, 20 percent had to come from renewables; by December 31, 2016, 25 percent had to come from renewables; and by December 31, 2020, 33 percent will come from renewables.

SB 350 expanded the RPS because it requires retail seller and publicly owned utilities to procure 50 percent of their electricity from eligible renewable energy resources by 2030, with interim goals of 40 percent by 2024 and 45 percent by 2027.

SB 100 accelerated and expanded the standards set forth in SB 350 by establishing that 44 percent of the total electricity sold to retail customers in California per year by December 31, 2024, 52 percent by December 31, 2027, and 60 percent by December 31, 2030 be secured from qualifying renewable energy sources. SB 100 also states that it is the policy of the state that eligible renewable energy resources and zero-carbon resources supply 100 percent of the retail sales of electricity to California. This bill requires that the achievement of 100 percent zero-carbon electricity resources does not increase the carbon emissions elsewhere in the western grid and that the achievement not be achieved through resource shuffling.

Consequently, utility energy generation from non-renewable resources is expected to be reduced based on implementation of the 60-percent RPS in 2030. Therefore, any project's reliance on non-renewable energy sources would also be reduced.

Assembly Bill 1007 (2005). Assembly Bill (AB) 1007 required the CEC to prepare a statewide plan to increase the use of alternative fuels in California (State Alternative Fuels Plan). The CEC prepared the plan in partnership with the California Air Resources Board (CARB) and in consultation with other state agencies, plus federal and local agencies. The State Alternative Fuels Plan assessed various alternative fuels and developed fuel portfolios to meet California's goals to reduce petroleum consumption, increase alternative fuels use, reduce GHG emissions, and increase in-state production of biofuels without causing significant degradation of public health and environmental quality.

Assembly Bill 32 (2006) and Senate Bill 32 (2016). In 2006, the State Legislature enacted AB 32, the California Global Warming Solutions Act of 2006. AB 32 requires California to reduce its GHG emissions to 1990 levels by 2020. In 2016, the Legislature enacted SB 32, which extended the horizon year of the state's codified GHG reduction planning targets from 2020 to 2030, requiring California to reduce its GHG emissions to 40 percent below 1990 levels by 2030. In accordance with AB 32 and SB 32, CARB prepares scoping plans to guide the development of statewide policies and regulations for the reduction of GHG emissions. Many of the policy and regulatory concepts identified in the scoping plans focus on increasing energy efficiencies, using renewable resources, and reducing the consumption of petroleum-based fuels (such as gasoline and diesel). As such, the state's GHG emissions reduction planning framework creates co-benefits for energy-related resources.

California Building Energy Efficiency Standards (Title 24, Part 6). The California Building Energy Efficiency Standards for Residential and Nonresidential Buildings (California Code of Regulations, Title 24, Part 6) were adopted to ensure that building construction and system design and installation achieve energy efficiency and preserve outdoor and indoor environmental quality. The 2019 Title 24 Standards went into effect on January 1, 2020. The 2019 Title 24 Standards represent "challenging but achievable design and construction practices" that represent a major step towards meeting the Zero Net Energy (ZNE) goal." Homes built with the 2019 standards will use about 7 percent less energy due to energy efficiency measures versus those built under the 2016 standards. Once rooftop solar electricity generation is factored in, homes built under the 2019 standards will use about 53 percent less energy than those built under the 2016 standards. The California Building Code is updated triennially and is expected to become more energy efficient with each update.

California Green Building Standards (Title 24, Part 11). The California Green Building Standards Code (California Code of Regulations, Title 24, Part 11), commonly referred to as the CALGreen Code, includes mandatory measures related to energy efficiency, water efficiency and conservation, material conservation, resource efficiency, and environmental quality. Compliance with the CALGreen Code is enforced through the building permit process.

Integrated Energy Policy Report. The CEC is responsible for preparing integrated energy policy reports that identify emerging trends related to energy supply, demand, conservation, public health and safety, and maintenance of a healthy economy. The CEC’s Integrated Energy Policy Report discusses the state’s policy goals of decarbonizing buildings, doubling energy efficiency savings, and increasing flexibility in the electricity grid system to integrate more of renewable energy. Specific to the decarbonizing of building energy, the goal would be achieved by designing future commercial and residential buildings to source their energy almost entirely from electricity in place of natural gas. Regarding the increase in renewable energy flexibility, the goal would be achieved through increases in energy storage capacity within the state, increases in energy efficiency, and adjusting energy use to the time of day when the most amount of renewable energy is being generated. Over time as they are implemented, these policies and trends would serve to beneficially reduce the GHG emissions profile and energy consumption from projects. The latest version of the report was published in March 2021 and is titled *Final 2020 Integrated Energy Policy Report Update*.

State Vehicle Standards. In response to the transportation sector accounting for more than half of California’s carbon dioxide (CO₂) emissions, AB 1493 was enacted in 2002. AB 1493 required CARB to set GHG emissions standards for passenger vehicles, light-duty trucks, and other vehicles determined by CARB to be vehicles whose primary use is noncommercial personal transportation in the state. The bill required that CARB set GHG emissions standards for motor vehicles manufactured in 2009 and all subsequent model years. The 2009-2012 standards resulted in a reduction in approximately 22 percent of GHG emissions compared to emissions from the 2002 fleet, and the 2013-2016 standards resulted in a reduction of approximately 30 percent.

In 2012, CARB approved a new emissions-control program for model years 2017 through 2025. The program combines the control of smog, soot, and global-warming gases with requirements for greater numbers of zero-emissions vehicles into a single package of standards called Advanced Clean Cars. By 2025, when the rules would be fully implemented, new automobiles would emit 34 percent fewer global-warming gases and 75 percent fewer smog-forming emissions. Although the focus of the state’s vehicle standards is on the reduction of air pollutants and GHG emissions, one co-benefit of implementation of these standards is a reduced demand for petroleum-based fuels.

Sustainable Communities Strategy. The Sustainable Communities and Climate Protection Act of 2008, or SB 375, coordinates land use planning, regional transportation plans, and funding priorities to help California meet its GHG emissions reduction mandates established in AB 32. As codified in California Government Code Section 65080, SB 375 requires metropolitan planning organizations (MPOs; e.g., the Southern California Association of Governments [SCAG]) to include a Sustainable Communities Strategy (SCS) in their Regional Transportation Plan (RTP). The main focus of the SCS is to plan for growth in a fashion that will ultimately reduce GHG emissions, but the strategy is also part of a bigger effort to address other development issues, including transit and vehicle miles traveled, which influence the consumption of petroleum-based fuels.

Regional

Southern California Association of Governments (SCAG) 2020–2045 Regional Transportation Plan/ Sustainable Communities Strategy (RTP/SCS). The SCAG Regional Council formally adopted the *Connect SoCal 2020–2045 RTP/SCS* (Connect SoCal) on September 3, 2020. Rooted in the 2008 and 2012 RTP/SCS plans, Connect SoCal’s “Core Vision” focuses on maintaining and enhancing management of the transportation network while also expanding mobility choices by creating hubs that connect housing, jobs, and transit accessibility. The “Core Vision” of Connect SoCal is organized into six key focus areas that expand upon progress made in the 2016 RTP/SCS: Sustainable Development, System Preservation and Resilience, Demand & System Management, Transit Backbone, Complete Streets, and Goods Movement.

Connect SoCal incorporates a range of best practices for increasing transportation choices, reducing dependence on personal automobiles, further improving air quality and reducing GHG emissions, and encouraging growth in walkable, mixed-use communities with convenient access to transit infrastructure and employment.

San Bernardino Regional Greenhouse Gas Reduction Plan. In response to State initiatives, an informal project partnership, led by the San Bernardino Council of Government, compiled a GHG emissions inventory and an evaluation of reduction measures that could be adopted by the 25 Partnership Cities of San Bernardino County. The Regional Reduction Plan forecasts each city's emissions to the year 2030, including for the City of Rancho Cucamonga,. In addition to city-specific GHG emissions inventory, the Regional Reduction Plan includes a comprehensive list of measures applicable to the region and presented to each city to identify measures that would be feasible for implementation locally. Partnership cities provided a selection of potential GHG reduction strategies that were used to identify the level of reduction that would be achieved locally toward achieving a 2030 emissions reduction target.

Through the Regional Reduction Plan, the City selected a goal to reduce community GHG emissions to a level 40 percent below 2016 GHG emissions by 2030. Through policies in the City's 2010 General Plan and reduction measures identified in the Regional Reduction Plan, GHG emissions in the city would be reduced through implementation of the following general strategies:

- Promoting sustainable development that reduces environmental impacts;
- Working towards a sustainable jobs-housing balance;
- Implementing land use patterns and policies that incorporate smart growth practices;
- Reducing operational energy requirements through sustainable and complementary land use patterns;
- Promoting pedestrian-friendly development; and
- Supporting development projects that are designed to facilitate convenient access for pedestrians, bicycles, transit, and automobiles.

Resilient IE. Western Riverside Council of Governments (WRCOG) in partnership with the SBCOG/SBCTA developed the Resilient IE program to support regional and local efforts to prepare for and mitigate risks associated with climate adaptation and transportation infrastructure. The Resilient IE program includes six primary components:

- Establish a regional climate collaborative, referred to as the Inland Southern California Climate Collaborative (ISC3);
- Revise WRCOG's community vulnerability assessment and establish a vulnerability assessment for San Bernardino County;
- Develop city-level, climate-related transportation hazards and evacuation maps;
- Develop a climate resilient transportation infrastructure guidebook;
- Prepare a regional climate adaptation and resiliency general plan element template; and
- Serve as a pilot project to assess the community cost of downed or damaged transportation assets.

Through the development of the San Bernardino County Vulnerability Assessment and Adaptation Strategies, the Resilient IE program includes a vulnerability assessment that summarizes projected climate change—related hazards that would affect the county and cities within it. The project also includes a summary of climate change adaptation measures developed through a regional context for consideration by local agencies to implement in their own general plans or other planning documents.

Local

City of Rancho Cucamonga 2010 General Plan. The 2010 General Plan addresses the impact of communitywide activities on global warming and climate change within the Public Health and Safety chapter. Further, the 2010 General Plan Environmental Impact Report Climate Change section analyzes GHG emissions and climate change impacts associated with the implementation of the City's General Plan. The 2010 General Plan includes goals and policies to address vehicle trip reduction, energy conservation, water conservation, and reduction in solid waste generation. Motor vehicles represent the major source of regional emissions throughout the South Coast Air Basin and the City. Transportation and energy production (i.e., electricity generation) are the primary local activities associated with the generation of GHGs. The 2010 General Plan goals and policies for Public Health and Safety are designed to guide long-range planning decisions and daily activities to reduce emissions of GHGs and reduce the impact of local activities on climate change. Many actions identified in the 2010 General Plan undertaken by the City would also directly or indirectly reduce GHG emissions. These actions include building residential units near the Metrolink station, pursuing mixed-use development, supporting transit use, developing bicycle routes and trails, and supporting the use of alternative fuel vehicles in the City's vehicle fleet.

Rancho Cucamonga Sustainable Community Action Plan. As discussed previously, the City adopted the Sustainable Community Action Plan in 2017. The SAP uses the inventory and forecasts prepared through the Regional Reduction Plan to aspire to reduce GHG emissions 15 percent below 2008 levels by 2020. The City's SAP is a visionary document that identified a menu of goals and actions the City could take locally to reduce citywide GHG emissions in key areas, including transportation and mobility, land use and open space, energy efficiency and renewables, green building performance, water and wastewater, waste and recycling.

Greenhouse Gas Emissions and Climate Change Vulnerability Assessment Exiting Conditions Report. The City of Rancho Cucamonga has taken several steps to begin addressing climate change and reduce communitywide GHG emissions. These efforts include partnerships with regional agencies, including the SBCOG/SBCTA, to prepare the San Bernardino Regional Greenhouse Gas Reduction Plan and the City's Sustainable Community Action Plan, which identify strategies for reducing GHG emissions. Similarly, the Resilient IE program, developed through a partnership between WRCOG and SBCOG/SBCTA, identifies regional adaptation measures to assist cities in building resilience and adapting to anticipated climate change impacts. SBCOG/SBCTA is currently in the process of preparing an updated GHG inventory for the region for the year 2016.

The City's Greenhouse Gas Emissions and Climate Change Vulnerability Assessment includes two chapters. Chapter 1, Greenhouse Gas Emissions, includes a summary of climate change science and existing guidance for setting communitywide reduction targets, and developing plans for GHG reduction. Further, the chapter acknowledges the City's communitywide GHG emissions inventory. The inventory will provide an accounting of communitywide GHG emissions from activities within the city for a single year, forecast GHG emissions into the future consistent with State milestone years and the General Plan Update horizon year, and set emissions reduction targets consistent with State goals. Chapter 2, Climate Change Vulnerability Assessment, summarizes current and potential future climate-related impacts that may affect the City, evaluates how these impacts would potentially affect the community's populations, assets, and functions, and prioritizes how the City should address each vulnerability through the General Plan Update and Local Hazard Mitigation Plan.

EXISTING CONDITIONS

California contains abundant sources of nonrenewable and renewable energy. Nonrenewable resources include large crude oil and natural gas deposits that are located within six geological basins in the Central Valley and along the coast. Much of these reserves are concentrated in the southern San Joaquin Basin. Regarding renewable resources, the State leads the nation in net electricity generation from solar, geothermal, and biomass. California has considerable solar potential, especially in the southeastern deserts and several of the world's largest solar thermal plants are located in California's Mojave Desert. Although California's wind power potential is widespread, especially along the eastern and southern mountain ranges, much of the State is excluded from development of this resource because it is in wilderness areas, parks, or urban areas. The transportation sector is responsible for the most energy consumption of any sector within the State. More motor vehicles are registered in California than in any other state, and commute times in California rank among some of the longest in the country.

The project area is characterized by low-rise single and multi-family residential structures with various commercial uses located along busier roadways in the neighborhood. The NRG Etiwanda Generating Station, a gas-fired power plant located approximately 0.9 mile south of the project site, was retired from operations on June 1, 2018. No other electricity or natural gas facilities have been identified that may be affected by the project. Electricity at the project site would be provided by RCMU and natural gas by SoCalGas.

SIGNIFICANCE THRESHOLDS

This assessment was undertaken to determine whether construction or operation of the proposed project would have the potential to result in significant environmental impacts related to Energy Resources in the context of the Appendix G Environmental Checklist criteria of the CEQA Statute and Guidelines. Implementation of the proposed project may result in a significant environmental impact related to Energy Resources if the proposed project would:

- a) Result in potentially significant environment impact due to wasteful, inefficient, or unnecessary consumption of energy resources during project construction or operation; and/or
- b) Conflict with or obstruct a State or local plan for renewable energy or energy efficiency.

METHODOLOGY

Appendix F of the CEQA Guidelines states that the goal of conserving energy implies the wise and efficient use of energy, to be achieved by decreasing overall per capita energy consumption; decreasing reliance on natural gas and oil; and increasing reliance on renewable energy resources. To assure energy implications are considered in project decisions, CEQA requires that environmental impact reports include a discussion of the potential energy impacts of proposed projects, with particular emphasis on avoiding or reducing inefficient, wasteful and unnecessary consumption of energy. The air quality analysis prepared for the proposed project, included in the appendix for the environmental documentation, includes a quantification of construction-related carbon dioxide (CO₂) emissions using the California Emissions Estimator Model (CalEEMod, Version 2016.3.2). These emissions were used to estimate construction energy from CO₂ emission factors derived for the CARB GHG emissions inventory. The 2018 Climate Registry indicates that for gasoline fuel, approximately 8.78 kilograms of CO₂ are generated per gallon combusted, and for diesel fuel, approximately 10.21 kilograms of CO₂ are generated per gallon combusted. The fuel consumption was estimated from the equipment and vehicles that would be employed in construction activities. Diesel engines are installed in heavy-duty off-road construction equipment and on-road haul trucks. Gasoline engines are typically found in passenger vehicles that would be used for construction worker daily commutes.

IMPACT ASSESSMENT

- a) *Would the proposed project result in potentially significant environmental impact due to wasteful, inefficient, or unnecessary consumption of energy resources, during project construction or operation? (Less-than-Significant Impact)*

Electricity

Construction. Construction of the proposed project would require electricity for security lighting, construction trailers, and operation of electrically powered hand tools. Consumption of electricity for construction would be minimal as the majority of construction equipment would be powered by diesel fuel rather than the electrical grid. Low-level safety lighting does not consume substantial electricity and trailers would be occupied intermittently during the construction process. The proposed project would facilitate the construction of housing that would meet the needs of the City and electricity used during the construction process is not considered to be a wasteful, inefficient, or unnecessary consumption of electricity. Therefore, construction of the proposed project would result in a less-than-significant impact regarding electricity consumption.

Operation. Operation of the proposed project would require electricity for indoor and outdoor lighting, appliances, elevators, and powering other equipment typically associated with multi-family housing. Maintenance activities during operations, such as landscape maintenance, would involve the use of electric or gas-powered equipment. In addition to on-site energy use, the proposed project would result in transportation energy use associated with vehicle trips generated by multi-family residential uses. The proposed project is estimated to consume 1,594,787 kWh of electricity per year. Compliance with all State and federal regulations, including the 2019 Title 6 California Energy Code and California Green Building Standards, would reduce and/or minimize the operational energy demands of the proposed project. The proposed project is comparable to other multi-family residential developments of similar size and does not involve any characteristics or uses that would require more intensive electricity consumption, nor involve the use of equipment that would not conform to current emissions standards and related fuel efficiencies. Therefore, operation of the proposed project would result in a less than significant impact related to wasteful, inefficient, or unnecessary consumption of electricity.

Natural Gas

Construction. Construction activities typically do not require the consumption of natural gas to power equipment or heavy machinery. Natural gas to the project site would be provided by SoCalGas. Natural gas that would be consumed during construction would be negligible and would not result in a significant drain on natural gas resources. Therefore, construction of the proposed project would result in a less than significant impact related to wasteful, inefficient, or unnecessary consumption of natural gas.

Operation. SoCalGas reports a declining use in natural gas per meter for residential customers due to conservation measures, Title 24 standards, improved building and appliance standards, aggressive energy efficiency programs, and demand reductions anticipated. Natural gas use associated with operation of the proposed project would be typical of multi-family residential uses, including heating, ventilation, and air conditioning, machinery, appliances, and more. The proposed project is estimated to consume 3.77 million British Thermal Units (MMBTUs) per year of natural gas. The proposed project would comply with all regional, State, and federal regulations related to natural gas consumption efficiency, and the proposed project does not involve any uses that would require more intensive natural gas consumption than comparable activities or would lead to wasteful natural gas consumption. Therefore, operation of the proposed project would not result in a significant impact related to wasteful, inefficient, or unnecessary consumption of natural gas.

Petroleum

Construction. Petroleum would be consumed during the demolition, excavation, and construction phases of the proposed project by heavy-duty equipment, which is usually diesel powered. Construction of the proposed project would result in an increased consumption of gasoline and diesel fuels associated with haul trucks, deliveries, and worker commute trips. **Table 1** shows that a one-time expenditure of approximately 193,255 gallons of diesel fuel and 98,858 gallons of gasoline would be needed to construct the proposed project. The proposed project would use best practices to eliminate the potential for the wasteful consumption of petroleum. Exported materials (e.g., demolition debris and soil hauling) would be disposed of at the closest facility that accepts such materials, and the proposed project would be required to comply with CARB’s Airborne Toxics Control Measure, which restricts heavy-duty diesel vehicle idling time to five minutes. Compliance with State and federal regulations would reduce and/or minimize short-term petroleum consumption during the project’s construction to the extent feasible, and project construction would not result in a wasteful or inefficient use of petroleum. Therefore, because petroleum use would be minimized to the extent feasible, construction of the proposed project would result in a less than significant impact related to wasteful, inefficient, or unnecessary consumption of petroleum-based fuels.

TABLE 1: CONSTRUCTION PETROLEUM DEMAND			
Source	CO₂ (kg)	Gallons/kgCO₂	Gallons
DIESEL			
Equipment	1,255,131.1	0.098	122,932
Trucks	717,990.3	0.098	70,323
Total Diesel Consumption			193,255
GASOLINE			
Worker Vehicles	867,966.3	0.114	98,858
Total Gasoline Consumption			98,858
SOURCE: The Climate Registry, 2018; TAHA, 2021.			

Operation. Petroleum consumption during operation of the proposed project would be related to vehicle trips for residents and employees to driving to and from the project site. Operational activities would generate approximately 1,503 daily vehicle trips producing 16,382.7 daily vehicle miles traveled. The project site is located within 0.5 mile of a stop on the Omnitrans Route 66 alignment which provides 15-minute headways along Foothill Boulevard during commute periods. Due to the 15-minute headways, Foothill Boulevard is classified as a high-quality transit corridor, and the proposed project is located within a Transit Priority Area (TPA). The land use growth assumed in the RTP/SCS includes an increase in multi-family housing units in the project location greater than the number of multi-family housing units proposed, which indicates the project is consistent with the RTP/SCS. There are no unusual project characteristics or processes that would require more intensive petroleum consumption than is used for comparable multi-family residential projects, or the use of equipment that would not conform to current emissions standards and related fuel efficiencies. In addition, the proposed project includes 15 electric vehicle charging stations in the subterranean parking garage, which would lessen long-term petroleum consumption. Implementation of the proposed project would not require the development of additional petroleum fuels infrastructure or supply. Therefore, operation of the proposed project would not result in a significant impact related to wasteful, inefficient, or unnecessary consumption of petroleum.

Mitigation Measures

No mitigation measures are required.

b) Would the proposed project conflict with or obstruct a State or local plan for renewable energy or energy efficiency? (Less-than-Significant Impact)

There is no potential for the proposed project to conflict with renewable energy or energy efficiency plans. Electricity will be provided from the RCMU system, and RCMU must comply with the State mandate (SB 100) to provide 60 percent renewable energy by 2030 and 100 percent carbon free electricity by 2045. Interim SB 100 targets include 44 percent renewable power sources by the end of 2024 and 52 percent by the end of 2027. It is reasonable to assume that 40 percent of the RCMU power mix would be sourced from renewables by the time the proposed project is operational.

Additionally, the proposed project would implement sustainable design features to enhance building energy efficiency and conserve energy, including, but not limited to:

- The proposed project would be designed to exceed the 2019 Title 24 energy efficiency standards by approximately 7.2 percent in one building and by approximately 2.5 percent in the other.
- The proposed project would also feature enhanced wall and window insulation to improve energy efficiency and reduce ambient heat flow across the building envelop.
- Water- and energy- efficient mechanical equipment and electric appliances (i.e., heating, ventilation, and air conditioning [HVAC], water heaters, kitchen appliances, and plumbing fixtures) that require less usage intensity for operation and comply with the CALGreen Code.
- Water-efficient landscaping and irrigation systems in compliance with California State law regarding water conservation measures.
- Installation of 15 electric vehicle charging stations in the subterranean parking garage.

The proposed Project would be consistent with the existing Mixed-Use land use designation in the City's General Plan thereby ensuring consistency with RCMU long-term plans for renewable energy and energy efficiency. Regarding natural gas use, SoCalGas would provide natural gas to the project site, and SoCalGas forecasts that a declining per meter consumption rate across Southern California will secure adequate future capacity. The 2020-2045 RTP/SCS includes various policies and recommendations related to energy efficiency. As described above, the proposed project would exceed the minimum building energy efficiency standards of Title 24. The proposed project would also be consistent with RTP/SCS goals to reduce petroleum use by being locating in a TPA. The proposed project would not conflict with the RTP/SCS.

Therefore, the proposed project would result in a less than significant impact related to energy plans and energy efficiency.

Mitigation Measures

No mitigation measures are required.

REFERENCES

- 42 United States Code, *Section 13201 et seq. Energy Policy Act*, 2005.
- California Code of Regulations, *Title 24 Building Energy Efficiency Standards*, 2019.
- California Energy Commission, *Energy Almanac*, <https://www.energy.ca.gov/data-reports/energy-almanac>, accessed October 13, 2020.
- California Energy Commission, *Final 2020 Integrated Energy Policy Report Update*, , March 23, 2021.
- California Energy Commission, *Warren-Alquist Act*, Enacted 1974.
- California Gas and Electric Utilities, *2020 California Gas Report*, 2020.
- California Public Utilities Commission, *2018 California Renewables Portfolio Standard Annual Report*, November 2018.
- California State Legislature, *Assembly Bill 1007*, Enacted September 29, 2005.
- California State Legislature, *Assembly Bill 1493*, Enacted July 22, 2002.
- California State Legislature, *Assembly Bill 32*, Enacted September 27, 2006.
- California State Legislature, *SB 375*, Enacted September 30, 2008.
- California State Legislature, *Senate Bill 100*, Enacted September 10, 2018.
- California State Legislature, *Senate Bill 107*, Enacted September 26, 2006.
- California State Legislature, *Senate Bill 1078*, Enacted September 12, 2020.
- California State Legislature, *Senate Bill 32*, Enacted September 8, 2016.
- California State Legislature, *Senate Bill 350*, Enacted October 7, 2015.
- California State, Legislature, *Senate Bill XI-2*, Enacted February 1, 2011.
- County of San Bernardino, *Regional Greenhouse Gas Reduction Plan*, March 2021.
- Rancho Cucamonga Municipal Utility, *2019 Power Content Label*, October 2020.
- Southern California Association of Governments (SCAG), *2020-2045 Regional Transportation Plan/Sustainable Communities Strategy*, 2020.
- The Climate Registry, *General Reporting Protocol*, 2019.
- U.S. Energy Information Administration, *California Natural Gas Consumption by End Use*, December 31, 2019.
- U.S. Energy Information Administration, *California State Electricity Profile 2019*, November 2, 2020.
- U.S. Energy Information Administration, *California State Energy Profile*, November 15, 2018.

United States, Congress, *Energy Independence and Security Act of 2007*, 110th Congress, 19 December 19, 2007.

United States, Congress, *Energy Policy Act of 2005*, 109th Congress, enacted August 8, 2005.

United States, Congress, *Energy Policy and Conservation Act of 1975*, 94th Congress, enacted December 22, 1975.

Appendix

Construction Activity Energy Calculations

Transportation Fuels Consumption

	<u>Fuel Type</u>	<u>Emissions (MTCO2)</u>	<u>Emissions (kgCO2)</u>	<u>Conversion (kgCO2/gal)</u>	<u>Total Gallons</u>	
Equipment	Diesel	1,255.1	1,255,131.1	10.21	122,932	Diesel
Hauling + Vendor	Diesel	718.0	717,990.3	10.21	70,323	Diesel
Worker	Gasoline	868.0	867,966.3	8.78	98,858	Gasoline
					193,255	Diesel

Year	CALEEMOD Phase	Source	Metric Tons	KG
			CO2	CO2
2022	Demo	E	10.9785	10978.5
2022	Demo	H		0
2022	Demo	V		0
2022	Demo	W	2.1051	2105.1
2022	Grading - East Building	E	45.0454	45045.4
2022	Grading - East Building	H		0
2022	Grading - East Building	V		0
2022	Grading - East Building	W	4.2102	4210.2
2022	Trenching/Utilities - East Building	E	26.9238	26923.8
2022	Trenching/Utilities - East Building	H	105.4147	105414.7
2022	Trenching/Utilities - East Building	V		0
2022	Trenching/Utilities - East Building	W	4.2102	4210.2
2022	Construction - East Building	E	185.4548	185454.8
2022	Construction - East Building	H		0
2022	Construction - East Building	V	93.7047	93704.7
2022	Construction - East Building	W	163.1432	163143.2
2023	Construction - East Building	E	311.0993	311099.3
2023	Construction - East Building	H		0
2023	Construction - East Building	V	152.8593	152859.3
2023	Construction - East Building	W	263.384	263384
2024	Construction - East Building	E	41.8762	41876.2
2024	Construction - East Building	H		0
2024	Construction - East Building	V	20.5543	20554.3
2024	Construction - East Building	W	34.3054	34305.4
2022	Grading - West Building	E	33.7841	33784.1
2022	Grading - West Building	H		0
2022	Grading - West Building	V		0
2022	Grading - West Building	W	3.1576	3157.6
2022	Trenching/Utilities - West Building	E	13.4619	13461.9
2022	Trenching/Utilities - West Building	H	52.7073	52707.3
2022	Trenching/Utilities - West Building	V		0
2022	Trenching/Utilities - West Building	W	2.1051	2105.1
2022	Construction - West Building	E	15.6237	15623.7
2022	Construction - West Building	H		0
2022	Construction - West Building	V	9.0682	9068.2
2022	Construction - West Building	W	15.7881	15788.1
2023	Construction - West Building	E	270.825	270825
2023	Construction - West Building	H		0
2023	Construction - West Building	V	152.8593	152859.3
2023	Construction - West Building	W	263.384	263384
2024	Construction - West Building	E	52.0781	52078.1
2024	Construction - West Building	H		0
2024	Construction - West Building	V	29.3632	29363.2
2024	Construction - West Building	W	49.0077	49007.7
2023	Paving - East Building	E	108.145	108145
2023	Paving - East Building	H		0
2023	Paving - East Building	V	52.9128	52912.8
2023	Paving - East Building	W	18.2343	18234.3
2023	Architectual Coatings - East	E	11.7843	11784.3
2023	Architectual Coatings - East	H		0
2023	Architectual Coatings - East	V		0

Construction Activity Energy Calculations
Transportation Fuels Consumption

Year	CALEEMOD Phase	Source	Metric Tons	KG
			CO2	CO2
2023	Architectural Coatings - East	W	12.1562	12156.2
2023	Paving - West Building	E	96.1288	96128.8
2023	Paving - West Building	H		0
2023	Paving - West Building	V	47.0336	47033.6
2023	Paving - West Building	W	16.2083	16208.3
2023	Architectural Coatings - West	E	11.7842	11784.2
2023	Architectural Coatings - West	H		0
2023	Architectural Coatings - West	V		0
2023	Architectural Coatings - West	W	12.1562	12156.2
2024	Bus Bay - Demo	E	4.4153	4415.3
2024	Bus Bay - Demo	H	0.7053	705.3
2024	Bus Bay - Demo	V		0
2024	Bus Bay - Demo	W	0.9802	980.2
2024	Bus Bay - Site Prep	E	6.4881	6488.1
2024	Bus Bay - Site Prep	H		0
2024	Bus Bay - Site Prep	V		0
2024	Bus Bay - Site Prep	W	1.9603	1960.3
2024	Bus Bay - Construction	E	7.7934	7793.4
2024	Bus Bay - Construction	H		0
2024	Bus Bay - Construction	V	0.7341	734.1
2024	Bus Bay - Construction	W	1.2252	1225.2
2024	Bus Bay - Paving	E	1.4412	1441.2
2024	Bus Bay - Paving	H		0
2024	Bus Bay - Paving	V	0.0735	73.5
2024	Bus Bay - Paving	W	0.245	245

Annual CalEEMod Output Files

- Alta Cuvee Mixed-Use Project CalEEMod Output
- Alta Cuvee Bus Bay CalEEMod Output

Alta Cuvee Mixed-Use Project - San Bernardino-South Coast County, Annual

Alta Cuvee Mixed-Use Project
San Bernardino-South Coast County, Annual

1.0 Project Characteristics

1.1 Land Usage

Land Uses	Size	Metric	Lot Acreage	Floor Surface Area	Population
General Office Building	5.54	1000sqft	0.13	5,537.00	0
Enclosed Parking with Elevator	265.00	Space	0.00	89,810.00	0
Parking Lot	200.00	Space	1.80	64,690.00	0
City Park	0.33	Acre	0.33	14,375.00	0
Recreational Swimming Pool	3.58	1000sqft	0.00	3,572.00	0
Apartments Mid Rise	259.00	Dwelling Unit	3.00	225,079.00	785
Condo/Townhouse	1.00	Dwelling Unit	0.00	1,570.00	3
Strip Mall	2.44	1000sqft	0.00	2,436.00	0

1.2 Other Project Characteristics

Urbanization	Urban	Wind Speed (m/s)	2.2	Precipitation Freq (Days)	32
Climate Zone	10			Operational Year	2024
Utility Company	Southern California Edison				
CO2 Intensity (lb/MW hr)	627.49	CH4 Intensity (lb/MW hr)	0.029	N2O Intensity (lb/MW hr)	0.006

1.3 User Entered Comments & Non-Default Data

Project Characteristics - RCMU 2020 Power Content Label for CO2e Intensity: 630 lbCO2e/MWh

Land Use - Project Design Land Uses:
 Apartments: 226,649 SF (Includes Live/Work Unit)
 Retail: 2,436 SF

Alta Cuvee Mixed-Use Project - San Bernardino-South Coast County, Annual

Sub. Parking: 89,810 SF

Sfc. Parking: 64,690 SF

Leasing Office: 5,537 SF

Construction Phase - Schedule Provided by Applicant.

Site Preparation = Grading - East Building

Grading = Grading - West Building

Off-road Equipment - Project Equipment Inventory Provided by Applicant

Off-road Equipment - Project Inventory Provided by Applicant

Off-road Equipment - Project Inventory provided by Applicant.

Off-road Equipment - Project Inventory provided by Applicant.

Off-road Equipment - Project Inventory provided by Applicant.

Off-road Equipment - Project Inventory provided by Applicant.

"Grading" - West Grading

Off-road Equipment - Project Inventory

Off-road Equipment - Project Inventory provided by Applicant.

Off-road Equipment -

Off-road Equipment - Project Inventory provided by Applicant.

"Site Preparation" = East Grading

Off-road Equipment - Project Inventory provided by Applicant.

Off-road Equipment - Project Inventory provided by Applicant.

Trips and VMT - Max 60 haul loads per day during excavation/trenching.

Assume 20 vendor deliveries per day during construction.

Approximately 50-300 workers on-site during construction.

Grading - 31,770 total exported

Architectural Coating - SCAQMD Rule 1113 Compliance for Building Envelope and residential coatings - 50 g/L

Vehicle Trips - 1,420 daily residential trips/259 apartments = 5.483 trips/du

83 daily shopping trips/2.436 ksf = 34.08trips/ksf

Woodstoves - No Fireplaces in units per Project Design

1 Outdoor Fireplace Included

Area Coating - SCAQMD Rule 1113 Compliance for Building Envelope coatings: 50 g/L

Energy Use - Updated to 2019 Title 24 Energy Factors (CAPCOA, 2020)

Water And Wastewater - MND Estimated Project Water Use: Residential: 66,560 gal/day; Non-residential: 8,164 gal/day

Alta Cuvee Mixed-Use Project - San Bernardino-South Coast County, Annual

Solid Waste - Waste Generation from MND Calculations: 12.23 lb/DU/day x 260 DU x 365 days/yr = 580.3135 tons solid waste

Construction Off-road Equipment Mitigation - Best management practices to comply with SCAQMD Rule 403 include watering exposed areas thrice daily.

Mobile Land Use Mitigation - Electric Vehicle Charging Provided (Not Quantified)

Area Mitigation - SCAQMD Rule 1113 Compliance for Building Envelop
Project Design does not include hearths/fireplaces in units, only 1 outdoor fireplace.

Energy Mitigation - High-Efficiency Appliances.

Water Mitigation -

Fleet Mix - Residential Trips

Table Name	Column Name	Default Value	New Value
tblArchitecturalCoating	EF_Nonresidential_Exterior	100.00	50.00
tblArchitecturalCoating	EF_Nonresidential_Exterior	100.00	50.00
tblAreaCoating	Area_EF_Nonresidential_Exterior	100	50
tblConstEquipMitigation	NumberOfEquipmentMitigated	0.00	2.00
tblConstEquipMitigation	NumberOfEquipmentMitigated	0.00	1.00
tblConstEquipMitigation	NumberOfEquipmentMitigated	0.00	8.00
tblConstEquipMitigation	NumberOfEquipmentMitigated	0.00	1.00
tblConstEquipMitigation	NumberOfEquipmentMitigated	0.00	6.00
tblConstEquipMitigation	NumberOfEquipmentMitigated	0.00	2.00
tblConstEquipMitigation	NumberOfEquipmentMitigated	0.00	4.00
tblConstEquipMitigation	NumberOfEquipmentMitigated	0.00	4.00
tblConstEquipMitigation	NumberOfEquipmentMitigated	0.00	8.00
tblConstEquipMitigation	NumberOfEquipmentMitigated	0.00	4.00
tblConstEquipMitigation	NumberOfEquipmentMitigated	0.00	2.00
tblConstEquipMitigation	NumberOfEquipmentMitigated	0.00	3.00
tblConstEquipMitigation	NumberOfEquipmentMitigated	0.00	4.00

Alta Cuvee Mixed-Use Project - San Bernardino-South Coast County, Annual

tblConstEquipMitigation	Tier	No Change	Tier 4 Final
tblConstEquipMitigation	Tier	No Change	Tier 4 Final
tblConstEquipMitigation	Tier	No Change	Tier 4 Final
tblConstEquipMitigation	Tier	No Change	Tier 4 Final
tblConstEquipMitigation	Tier	No Change	Tier 4 Final
tblConstEquipMitigation	Tier	No Change	Tier 4 Final
tblConstEquipMitigation	Tier	No Change	Tier 4 Final
tblConstEquipMitigation	Tier	No Change	Tier 4 Final
tblConstEquipMitigation	Tier	No Change	Tier 4 Final
tblConstEquipMitigation	Tier	No Change	Tier 4 Final
tblConstEquipMitigation	Tier	No Change	Tier 4 Final
tblConstEquipMitigation	Tier	No Change	Tier 4 Final
tblConstEquipMitigation	Tier	No Change	Tier 4 Final
tblConstEquipMitigation	Tier	No Change	Tier 4 Final
tblConstructionPhase	NumDays	20.00	72.00
tblConstructionPhase	NumDays	20.00	72.00
tblConstructionPhase	NumDays	230.00	540.00
tblConstructionPhase	NumDays	230.00	390.00
tblConstructionPhase	NumDays	20.00	12.00
tblConstructionPhase	NumDays	20.00	24.00
tblConstructionPhase	NumDays	20.00	18.00
tblConstructionPhase	NumDays	20.00	96.00
tblConstructionPhase	NumDays	20.00	108.00
tblConstructionPhase	NumDays	10.00	24.00
tblConstructionPhase	NumDays	10.00	12.00
tblConstructionPhase	NumDaysWeek	5.00	6.00
tblConstructionPhase	NumDaysWeek	5.00	6.00
tblConstructionPhase	NumDaysWeek	5.00	6.00

Alta Cuvee Mixed-Use Project - San Bernardino-South Coast County, Annual

tblConstructionPhase	NumDaysWeek	5.00	6.00
tblConstructionPhase	NumDaysWeek	5.00	6.00
tblConstructionPhase	NumDaysWeek	5.00	6.00
tblConstructionPhase	NumDaysWeek	5.00	6.00
tblConstructionPhase	NumDaysWeek	5.00	6.00
tblConstructionPhase	NumDaysWeek	5.00	6.00
tblConstructionPhase	NumDaysWeek	5.00	6.00
tblConstructionPhase	NumDaysWeek	5.00	6.00
tblEnergyUse	T24E	772.17	164.47
tblEnergyUse	T24E	845.95	177.65
tblEnergyUse	T24E	3.92	3.50
tblEnergyUse	T24E	3.07	2.74
tblEnergyUse	T24E	4.58	4.09
tblEnergyUse	T24NG	8,764.08	8,352.00
tblEnergyUse	T24NG	16,633.53	15,070.00
tblEnergyUse	T24NG	3.47	3.00
tblFireplaces	FireplaceDayYear	25.00	0.00
tblFireplaces	FireplaceDayYear	25.00	365.00
tblFireplaces	FireplaceHourDay	3.00	0.00
tblFireplaces	FireplaceHourDay	3.00	6.00
tblFireplaces	FireplaceWoodMass	1,019.20	0.00
tblFireplaces	FireplaceWoodMass	1,019.20	0.00
tblFireplaces	NumberGas	220.15	0.00
tblFireplaces	NumberGas	0.85	1.00
tblFireplaces	NumberNoFireplace	25.90	0.00
tblFireplaces	NumberNoFireplace	0.10	0.00
tblFireplaces	NumberWood	12.95	0.00

Alta Cuvee Mixed-Use Project - San Bernardino-South Coast County, Annual

tblFireplaces	NumberWood	0.05	0.00
tblFleetMix	HHD	0.07	0.00
tblFleetMix	HHD	0.07	0.00
tblFleetMix	LDA	0.56	0.60
tblFleetMix	LDA	0.56	0.60
tblFleetMix	LDT1	0.04	0.06
tblFleetMix	LDT1	0.04	0.06
tblFleetMix	LDT2	0.18	0.19
tblFleetMix	LDT2	0.18	0.19
tblFleetMix	LHD1	0.01	0.02
tblFleetMix	LHD1	0.01	0.02
tblFleetMix	LHD2	4.7940e-003	5.0000e-003
tblFleetMix	LHD2	4.7940e-003	5.0000e-003
tblFleetMix	MCY	5.7250e-003	0.01
tblFleetMix	MCY	5.7250e-003	0.01
tblFleetMix	MDV	0.11	0.12
tblFleetMix	MDV	0.11	0.12
tblFleetMix	MH	8.3000e-004	0.00
tblFleetMix	MH	8.3000e-004	0.00
tblFleetMix	MHD	0.02	0.00
tblFleetMix	MHD	0.02	0.00
tblFleetMix	OBUS	1.3650e-003	0.00
tblFleetMix	OBUS	1.3650e-003	0.00
tblFleetMix	SBUS	7.9900e-004	0.00
tblFleetMix	SBUS	7.9900e-004	0.00
tblFleetMix	UBUS	1.4910e-003	0.00
tblFleetMix	UBUS	1.4910e-003	0.00

Alta Cuvee Mixed-Use Project - San Bernardino-South Coast County, Annual

tblGrading	MaterialExported	0.00	21,180.00
tblGrading	MaterialExported	0.00	10,590.00
tblLandUse	LandUseSquareFeet	5,540.00	5,537.00
tblLandUse	LandUseSquareFeet	106,000.00	89,810.00
tblLandUse	LandUseSquareFeet	80,000.00	64,690.00
tblLandUse	LandUseSquareFeet	14,374.80	14,375.00
tblLandUse	LandUseSquareFeet	3,580.00	3,572.00
tblLandUse	LandUseSquareFeet	259,000.00	225,079.00
tblLandUse	LandUseSquareFeet	1,000.00	1,570.00
tblLandUse	LandUseSquareFeet	2,440.00	2,436.00
tblLandUse	LotAcreage	2.38	0.00
tblLandUse	LotAcreage	0.08	0.00
tblLandUse	LotAcreage	6.82	3.00
tblLandUse	LotAcreage	0.06	0.00
tblLandUse	LotAcreage	0.06	0.00
tblLandUse	Population	741.00	785.00
tblOffRoadEquipment	HorsePower	78.00	15.00
tblOffRoadEquipment	HorsePower	78.00	15.00
tblOffRoadEquipment	OffRoadEquipmentUnitAmount	1.00	5.00
tblOffRoadEquipment	OffRoadEquipmentUnitAmount	1.00	5.00
tblOffRoadEquipment	OffRoadEquipmentUnitAmount	3.00	1.00
tblOffRoadEquipment	OffRoadEquipmentUnitAmount	1.00	2.00
tblOffRoadEquipment	OffRoadEquipmentUnitAmount	1.00	2.00
tblOffRoadEquipment	OffRoadEquipmentUnitAmount	4.00	1.00
tblOffRoadEquipment	OffRoadEquipmentUnitAmount	4.00	1.00
tblOffRoadEquipment	UsageHours	6.00	8.00
tblOffRoadEquipment	UsageHours	6.00	8.00

Alta Cuvee Mixed-Use Project - San Bernardino-South Coast County, Annual

tblProjectCharacteristics	CO2IntensityFactor	702.44	627.49
tblSolidWaste	SolidWasteGenerationRate	119.14	580.32
tblSolidWaste	SolidWasteGenerationRate	0.03	0.00
tblSolidWaste	SolidWasteGenerationRate	0.46	0.00
tblSolidWaste	SolidWasteGenerationRate	20.41	0.00
tblSolidWaste	SolidWasteGenerationRate	2.56	20.45
tblTripsAndVMT	HaulingTripNumber	2,648.00	2,880.00
tblTripsAndVMT	HaulingTripNumber	1,324.00	1,440.00
tblTripsAndVMT	VendorTripNumber	0.00	40.00
tblTripsAndVMT	VendorTripNumber	57.00	40.00
tblTripsAndVMT	VendorTripNumber	57.00	40.00
tblTripsAndVMT	VendorTripNumber	0.00	40.00
tblTripsAndVMT	WorkerTripNumber	13.00	40.00
tblTripsAndVMT	WorkerTripNumber	15.00	40.00
tblTripsAndVMT	WorkerTripNumber	52.00	40.00
tblTripsAndVMT	WorkerTripNumber	15.00	40.00
tblTripsAndVMT	WorkerTripNumber	13.00	40.00
tblTripsAndVMT	WorkerTripNumber	262.00	200.00
tblTripsAndVMT	WorkerTripNumber	15.00	40.00
tblTripsAndVMT	WorkerTripNumber	13.00	40.00
tblTripsAndVMT	WorkerTripNumber	262.00	200.00
tblTripsAndVMT	WorkerTripNumber	15.00	40.00
tblTripsAndVMT	WorkerTripNumber	52.00	40.00
tblVehicleTrips	CC_TL	8.40	10.06
tblVehicleTrips	CNW_TL	6.90	10.06
tblVehicleTrips	CW_TL	16.60	10.06
tblVehicleTrips	DV_TP	11.00	0.00

Alta Cuvee Mixed-Use Project - San Bernardino-South Coast County, Annual

tblVehicleTrips	DV_TP	11.00	0.00
tblVehicleTrips	DV_TP	40.00	0.00
tblVehicleTrips	HO_TL	8.70	10.06
tblVehicleTrips	HO_TTP	40.60	40.00
tblVehicleTrips	HO_TTP	40.60	40.00
tblVehicleTrips	HS_TL	5.90	10.06
tblVehicleTrips	HS_TTP	19.20	20.00
tblVehicleTrips	HS_TTP	19.20	20.00
tblVehicleTrips	HW_TL	14.70	10.06
tblVehicleTrips	HW_TTP	40.20	40.00
tblVehicleTrips	HW_TTP	40.20	40.00
tblVehicleTrips	PB_TP	3.00	0.00
tblVehicleTrips	PB_TP	3.00	0.00
tblVehicleTrips	PB_TP	15.00	0.00
tblVehicleTrips	PR_TP	86.00	100.00
tblVehicleTrips	PR_TP	86.00	100.00
tblVehicleTrips	PR_TP	45.00	100.00
tblVehicleTrips	ST_TR	6.39	5.48
tblVehicleTrips	ST_TR	22.75	0.00
tblVehicleTrips	ST_TR	5.67	0.00
tblVehicleTrips	ST_TR	2.46	0.00
tblVehicleTrips	ST_TR	9.10	0.00
tblVehicleTrips	ST_TR	42.04	34.08
tblVehicleTrips	SU_TR	5.86	5.48
tblVehicleTrips	SU_TR	16.74	0.00
tblVehicleTrips	SU_TR	4.84	0.00
tblVehicleTrips	SU_TR	1.05	0.00

Alta Cuvee Mixed-Use Project - San Bernardino-South Coast County, Annual

tblVehicleTrips	SU_TR	13.60	0.00
tblVehicleTrips	SU_TR	20.43	34.08
tblVehicleTrips	WD_TR	6.65	5.48
tblVehicleTrips	WD_TR	1.89	0.00
tblVehicleTrips	WD_TR	5.81	0.00
tblVehicleTrips	WD_TR	11.03	0.00
tblVehicleTrips	WD_TR	33.82	0.00
tblVehicleTrips	WD_TR	44.32	34.08
tblWater	IndoorWaterUseRate	16,874,892.64	24,294,400.00
tblWater	IndoorWaterUseRate	65,154.03	0.00
tblWater	IndoorWaterUseRate	984,644.96	0.00
tblWater	IndoorWaterUseRate	211,732.46	0.00
tblWater	IndoorWaterUseRate	180,736.95	2,979,860.00
tblWater	OutdoorWaterUseRate	603,492.07	0.00
tblWater	OutdoorWaterUseRate	110,774.26	0.00
tblWoodstoves	NumberCatalytic	12.95	0.00
tblWoodstoves	NumberCatalytic	0.05	0.00
tblWoodstoves	NumberNoncatalytic	12.95	0.00
tblWoodstoves	NumberNoncatalytic	0.05	0.00
tblWoodstoves	WoodstoveDayYear	25.00	0.00
tblWoodstoves	WoodstoveDayYear	25.00	0.00
tblWoodstoves	WoodstoveWoodMass	999.60	0.00
tblWoodstoves	WoodstoveWoodMass	999.60	0.00

2.0 Emissions Summary

Alta Cuvee Mixed-Use Project - San Bernardino-South Coast County, Annual

2.1 Overall Construction

Unmitigated Construction

	ROG	NOx	CO	SO2	Fugitive PM10	Exhaust PM10	PM10 Total	Fugitive PM2.5	Exhaust PM2.5	PM2.5 Total	Bio- CO2	NBio- CO2	Total CO2	CH4	N2O	CO2e
Year	tons/yr										MT/yr					
2022	0.3077	2.9439	2.9131	8.6700e-003	0.3829	0.0913	0.4741	0.0906	0.0866	0.1772	0.0000	786.8868	786.8868	0.0941	0.0000	789.2398
2023	2.2446	5.3238	8.0025	0.0201	0.8649	0.1773	1.0423	0.2321	0.1703	0.4024	0.0000	1,800.9552	1,800.9552	0.1945	0.0000	1,805.8182
2024	0.0833	0.5883	0.9628	2.5300e-003	0.1247	0.0167	0.1414	0.0334	0.0162	0.0496	0.0000	227.1850	227.1850	0.0187	0.0000	227.6522
Maximum	2.2446	5.3238	8.0025	0.0201	0.8649	0.1773	1.0423	0.2321	0.1703	0.4024	0.0000	1,800.9552	1,800.9552	0.1945	0.0000	1,805.8182

Mitigated Construction

	ROG	NOx	CO	SO2	Fugitive PM10	Exhaust PM10	PM10 Total	Fugitive PM2.5	Exhaust PM2.5	PM2.5 Total	Bio- CO2	NBio- CO2	Total CO2	CH4	N2O	CO2e
Year	tons/yr										MT/yr					
2022	0.1648	1.2345	3.2302	8.6700e-003	0.3362	9.0700e-003	0.3452	0.0855	8.8700e-003	0.0944	0.0000	786.8864	786.8864	0.0941	0.0000	789.2394
2023	1.9803	2.2449	8.7719	0.0201	0.8649	0.0283	0.8932	0.2321	0.0278	0.2600	0.0000	1,800.9542	1,800.9542	0.1945	0.0000	1,805.8173
2024	0.0550	0.2541	1.0423	2.5300e-003	0.1247	2.3900e-003	0.1271	0.0334	2.3300e-003	0.0358	0.0000	227.1849	227.1849	0.0187	0.0000	227.6520
Maximum	1.9803	2.2449	8.7719	0.0201	0.8649	0.0283	0.8932	0.2321	0.0278	0.2600	0.0000	1,800.9542	1,800.9542	0.1945	0.0000	1,805.8173

Alta Cuvee Mixed-Use Project - San Bernardino-South Coast County, Annual

	ROG	NOx	CO	SO2	Fugitive PM10	Exhaust PM10	PM10 Total	Fugitive PM2.5	Exhaust PM2.5	PM2.5 Total	Bio- CO2	NBio-CO2	Total CO2	CH4	N20	CO2e
Percent Reduction	16.52	57.84	-9.82	0.00	3.40	86.07	17.63	1.43	85.70	38.00	0.00	0.00	0.00	0.00	0.00	0.00

Quarter	Start Date	End Date	Maximum Unmitigated ROG + NOX (tons/quarter)	Maximum Mitigated ROG + NOX (tons/quarter)
1	3-7-2022	6-6-2022	1.0456	0.3929
2	6-7-2022	9-6-2022	0.6314	0.3212
3	9-7-2022	12-6-2022	1.0903	0.4516
4	12-7-2022	3-6-2023	1.1546	0.5418
5	3-7-2023	6-6-2023	1.5955	0.8762
6	6-7-2023	9-6-2023	2.4149	1.3079
7	9-7-2023	12-6-2023	2.4722	1.5384
8	12-7-2023	3-6-2024	0.9413	0.4330
9	3-7-2024	6-6-2024	0.0164	0.0069
		Highest	2.4722	1.5384

Alta Cuvee Mixed-Use Project - San Bernardino-South Coast County, Annual

2.2 Overall Operational

Unmitigated Operational

	ROG	NOx	CO	SO2	Fugitive PM10	Exhaust PM10	PM10 Total	Fugitive PM2.5	Exhaust PM2.5	PM2.5 Total	Bio- CO2	NBio- CO2	Total CO2	CH4	N2O	CO2e
Category	tons/yr										MT/yr					
Area	1.0161	0.0370	2.6888	1.8000e-004		0.0154	0.0154		0.0154	0.0154	0.0000	11.4037	11.4037	4.3700e-003	1.3000e-004	11.5512
Energy	0.0203	0.1737	0.0744	1.1100e-003		0.0140	0.0140		0.0140	0.0140	0.0000	662.8195	662.8195	0.0252	8.1000e-003	665.8636
Mobile	0.4708	0.8495	6.1092	0.0183	2.0571	0.0134	2.0705	0.5470	0.0124	0.5594	0.0000	1,658.1154	1,658.1154	0.0598	0.0000	1,659.6103
Waste						0.0000	0.0000		0.0000	0.0000	122.9963	0.0000	122.9963	7.2689	0.0000	304.7181
Water						0.0000	0.0000		0.0000	0.0000	8.6529	136.5056	145.1584	0.8950	0.0223	174.1769
Total	1.5072	1.0602	8.8723	0.0196	2.0571	0.0428	2.0999	0.5470	0.0418	0.5888	131.6491	2,468.8441	2,600.4932	8.2533	0.0305	2,815.9201

Alta Cuvee Mixed-Use Project - San Bernardino-South Coast County, Annual

2.2 Overall Operational

Mitigated Operational

	ROG	NOx	CO	SO2	Fugitive PM10	Exhaust PM10	PM10 Total	Fugitive PM2.5	Exhaust PM2.5	PM2.5 Total	Bio- CO2	NBio- CO2	Total CO2	CH4	N2O	CO2e
Category	tons/yr										MT/yr					
Area	1.0161	0.0370	2.6888	1.8000e-004		0.0154	0.0154		0.0154	0.0154	0.0000	11.4037	11.4037	4.3700e-003	1.3000e-004	11.5512
Energy	0.0203	0.1737	0.0744	1.1100e-003		0.0140	0.0140		0.0140	0.0140	0.0000	654.9937	654.9937	0.0248	8.0300e-003	658.0065
Mobile	0.4708	0.8495	6.1092	0.0183	2.0571	0.0134	2.0705	0.5470	0.0124	0.5594	0.0000	1,658.1154	1,658.1154	0.0598	0.0000	1,659.6103
Waste						0.0000	0.0000		0.0000	0.0000	122.9963	0.0000	122.9963	7.2689	0.0000	304.7181
Water						0.0000	0.0000		0.0000	0.0000	7.8741	125.2474	133.1215	0.8145	0.0203	159.5324
Total	1.5072	1.0602	8.8723	0.0196	2.0571	0.0428	2.0999	0.5470	0.0418	0.5888	130.8704	2,449.7602	2,580.6306	8.1724	0.0285	2,793.4185

	ROG	NOx	CO	SO2	Fugitive PM10	Exhaust PM10	PM10 Total	Fugitive PM2.5	Exhaust PM2.5	PM2.5 Total	Bio- CO2	NBio-CO2	Total CO2	CH4	N2O	CO2e
Percent Reduction	0.00	0.00	0.00	0.00	0.00	0.00	0.00	0.00	0.00	0.00	0.59	0.77	0.76	0.98	6.78	0.80

3.0 Construction Detail

Construction Phase

Alta Cuvee Mixed-Use Project - San Bernardino-South Coast County, Annual

Phase Number	Phase Name	Phase Type	Start Date	End Date	Num Days Week	Num Days	Phase Description
1	Demolition	Demolition	3/5/2022	3/18/2022	6	12	
2	Site Preparation	Grading	4/4/2022	4/30/2022	6	24	
3	Trenching/Utilities - East Building	Site Preparation	5/2/2022	5/28/2022	6	24	
4	Construction - East Building	Building Construction	5/30/2022	2/17/2024	6	540	
5	Grading	Grading	11/7/2022	11/26/2022	6	18	
6	Trenching/Utilities - West Building	Site Preparation	11/28/2022	12/10/2022	6	12	
7	Construction - West Building	Building Construction	12/12/2022	3/9/2024	6	390	
8	Paving - East Building	Paving	5/8/2023	9/9/2023	6	108	
9	Architectural Coatings - East Bldg	Architectural Coating	5/8/2023	7/29/2023	6	72	
10	Paving - West Building	Paving	8/7/2023	11/25/2023	6	96	
11	Architectural Coatings - West Bldg	Architectural Coating	9/11/2023	12/2/2023	6	72	

Acres of Grading (Site Preparation Phase): 60

Acres of Grading (Grading Phase): 45

Acres of Paving: 1.8

Residential Indoor: 458,964; Residential Outdoor: 152,988; Non-Residential Indoor: 11,960; Non-Residential Outdoor: 3,987; Striped Parking Area: 9,270 (Architectural Coating – sqft)

OffRoad Equipment

Phase Name	Offroad Equipment Type	Amount	Usage Hours	Horse Power	Load Factor
Demolition	Concrete/Industrial Saws	1	8.00	81	0.73
Demolition	Excavators	1	8.00	158	0.38
Demolition	Generator Sets	2	4.00	84	0.74
Demolition	Tractors/Loaders/Backhoes	1	8.00	97	0.37
Site Preparation	Crawler Tractors	2	8.00	212	0.43

Alta Cuvee Mixed-Use Project - San Bernardino-South Coast County, Annual

Site Preparation	Graders	1	8.00	187	0.41
Site Preparation	Rollers	2	8.00	80	0.38
Site Preparation	Scrapers	1	8.00	367	0.48
Trenching/Utilities - East Building	Crawler Tractors	2	8.00	212	0.43
Trenching/Utilities - East Building	Tractors/Loaders/Backhoes	1	8.00	97	0.37
Trenching/Utilities - East Building	Trenchers	2	8.00	78	0.50
Construction - East Building	Aerial Lifts	2	7.00	63	0.31
Construction - East Building	Generator Sets	2	8.00	84	0.74
Construction - East Building	Rough Terrain Forklifts	2	8.00	100	0.40
Grading	Crawler Tractors	2	8.00	212	0.43
Grading	Graders	1	8.00	187	0.41
Grading	Rollers	2	8.00	80	0.38
Grading	Scrapers	1	8.00	367	0.48
Trenching/Utilities - West Building	Crawler Tractors	2	8.00	212	0.43
Trenching/Utilities - West Building	Tractors/Loaders/Backhoes	1	8.00	97	0.37
Trenching/Utilities - West Building	Trenchers	2	8.00	78	0.50
Construction - West Building	Generator Sets	2	8.00	84	0.74
Construction - West Building	Rough Terrain Forklifts	2	8.00	100	0.40
Paving - East Building	Pavers	2	8.00	130	0.42
Paving - East Building	Paving Equipment	2	8.00	132	0.36
Paving - East Building	Rollers	2	8.00	80	0.38
Architectural Coatings - East Bldg	Air Compressors	5	8.00	15	0.48
Paving - West Building	Pavers	2	8.00	130	0.42
Paving - West Building	Paving Equipment	2	8.00	132	0.36
Paving - West Building	Rollers	2	8.00	80	0.38
Architectural Coatings - West Bldg	Air Compressors	5	8.00	15	0.48

Alta Cuvee Mixed-Use Project - San Bernardino-South Coast County, Annual

Trips and VMT

Phase Name	Offroad Equipment Count	Worker Trip Number	Vendor Trip Number	Hauling Trip Number	Worker Trip Length	Vendor Trip Length	Hauling Trip Length	Worker Vehicle Class	Vendor Vehicle Class	Hauling Vehicle Class
Demolition	5	40.00	0.00	0.00	14.70	6.90	20.00	LD_Mix	HDT_Mix	HHDT
Site Preparation	6	40.00	0.00	0.00	14.70	6.90	20.00	LD_Mix	HDT_Mix	HHDT
Trenching/Utilities - East Building	5	40.00	0.00	2,880.00	14.70	6.90	20.00	LD_Mix	HDT_Mix	HHDT
Construction - East Building	6	200.00	40.00	0.00	14.70	6.90	20.00	LD_Mix	HDT_Mix	HHDT
Grading	6	40.00	0.00	0.00	14.70	6.90	20.00	LD_Mix	HDT_Mix	HHDT
Trenching/Utilities - West Building	5	40.00	0.00	1,440.00	14.70	6.90	20.00	LD_Mix	HDT_Mix	HHDT
Construction - West Building	4	200.00	40.00	0.00	14.70	6.90	20.00	LD_Mix	HDT_Mix	HHDT
Paving - East Building	6	40.00	40.00	0.00	14.70	6.90	20.00	LD_Mix	HDT_Mix	HHDT
Architectural Coatings - East Bldg	5	40.00	0.00	0.00	14.70	6.90	20.00	LD_Mix	HDT_Mix	HHDT
Paving - West Building	6	40.00	40.00	0.00	14.70	6.90	20.00	LD_Mix	HDT_Mix	HHDT
Architectural Coatings - West Bldg	5	40.00	0.00	0.00	14.70	6.90	20.00	LD_Mix	HDT_Mix	HHDT

3.1 Mitigation Measures Construction

Use Cleaner Engines for Construction Equipment

Water Exposed Area

Alta Cuvee Mixed-Use Project - San Bernardino-South Coast County, Annual

3.2 Demolition - 2022

Unmitigated Construction On-Site

	ROG	NOx	CO	SO2	Fugitive PM10	Exhaust PM10	PM10 Total	Fugitive PM2.5	Exhaust PM2.5	PM2.5 Total	Bio- CO2	NBio- CO2	Total CO2	CH4	N2O	CO2e
Category	tons/yr										MT/yr					
Off-Road	6.3300e-003	0.0551	0.0770	1.3000e-004		2.8400e-003	2.8400e-003		2.7500e-003	2.7500e-003	0.0000	10.9785	10.9785	1.7500e-003	0.0000	11.0222
Total	6.3300e-003	0.0551	0.0770	1.3000e-004		2.8400e-003	2.8400e-003		2.7500e-003	2.7500e-003	0.0000	10.9785	10.9785	1.7500e-003	0.0000	11.0222

Unmitigated Construction Off-Site

	ROG	NOx	CO	SO2	Fugitive PM10	Exhaust PM10	PM10 Total	Fugitive PM2.5	Exhaust PM2.5	PM2.5 Total	Bio- CO2	NBio- CO2	Total CO2	CH4	N2O	CO2e
Category	tons/yr										MT/yr					
Hauling	0.0000	0.0000	0.0000	0.0000	0.0000	0.0000	0.0000	0.0000	0.0000	0.0000	0.0000	0.0000	0.0000	0.0000	0.0000	0.0000
Vendor	0.0000	0.0000	0.0000	0.0000	0.0000	0.0000	0.0000	0.0000	0.0000	0.0000	0.0000	0.0000	0.0000	0.0000	0.0000	0.0000
Worker	1.0300e-003	7.5000e-004	7.8400e-003	2.0000e-005	2.6300e-003	2.0000e-005	2.6500e-003	7.0000e-004	2.0000e-005	7.1000e-004	0.0000	2.1051	2.1051	5.0000e-005	0.0000	2.1064
Total	1.0300e-003	7.5000e-004	7.8400e-003	2.0000e-005	2.6300e-003	2.0000e-005	2.6500e-003	7.0000e-004	2.0000e-005	7.1000e-004	0.0000	2.1051	2.1051	5.0000e-005	0.0000	2.1064

Alta Cuvee Mixed-Use Project - San Bernardino-South Coast County, Annual

3.2 Demolition - 2022

Mitigated Construction On-Site

	ROG	NOx	CO	SO2	Fugitive PM10	Exhaust PM10	PM10 Total	Fugitive PM2.5	Exhaust PM2.5	PM2.5 Total	Bio- CO2	NBio- CO2	Total CO2	CH4	N2O	CO2e
Category	tons/yr										MT/yr					
Off-Road	1.3800e-003	5.9800e-003	0.0851	1.3000e-004		1.8000e-004	1.8000e-004		1.8000e-004	1.8000e-004	0.0000	10.9785	10.9785	1.7500e-003	0.0000	11.0222
Total	1.3800e-003	5.9800e-003	0.0851	1.3000e-004		1.8000e-004	1.8000e-004		1.8000e-004	1.8000e-004	0.0000	10.9785	10.9785	1.7500e-003	0.0000	11.0222

Mitigated Construction Off-Site

	ROG	NOx	CO	SO2	Fugitive PM10	Exhaust PM10	PM10 Total	Fugitive PM2.5	Exhaust PM2.5	PM2.5 Total	Bio- CO2	NBio- CO2	Total CO2	CH4	N2O	CO2e
Category	tons/yr										MT/yr					
Hauling	0.0000	0.0000	0.0000	0.0000	0.0000	0.0000	0.0000	0.0000	0.0000	0.0000	0.0000	0.0000	0.0000	0.0000	0.0000	0.0000
Vendor	0.0000	0.0000	0.0000	0.0000	0.0000	0.0000	0.0000	0.0000	0.0000	0.0000	0.0000	0.0000	0.0000	0.0000	0.0000	0.0000
Worker	1.0300e-003	7.5000e-004	7.8400e-003	2.0000e-005	2.6300e-003	2.0000e-005	2.6500e-003	7.0000e-004	2.0000e-005	7.1000e-004	0.0000	2.1051	2.1051	5.0000e-005	0.0000	2.1064
Total	1.0300e-003	7.5000e-004	7.8400e-003	2.0000e-005	2.6300e-003	2.0000e-005	2.6500e-003	7.0000e-004	2.0000e-005	7.1000e-004	0.0000	2.1051	2.1051	5.0000e-005	0.0000	2.1064

Alta Cuvee Mixed-Use Project - San Bernardino-South Coast County, Annual

3.3 Site Preparation - 2022

Unmitigated Construction On-Site

	ROG	NOx	CO	SO2	Fugitive PM10	Exhaust PM10	PM10 Total	Fugitive PM2.5	Exhaust PM2.5	PM2.5 Total	Bio- CO2	NBio- CO2	Total CO2	CH4	N2O	CO2e
Category	tons/yr										MT/yr					
Fugitive Dust					0.0318	0.0000	0.0318	3.4400e-003	0.0000	3.4400e-003	0.0000	0.0000	0.0000	0.0000	0.0000	0.0000
Off-Road	0.0306	0.3560	0.1974	5.1000e-004		0.0140	0.0140		0.0129	0.0129	0.0000	45.0455	45.0455	0.0146	0.0000	45.4097
Total	0.0306	0.3560	0.1974	5.1000e-004	0.0318	0.0140	0.0458	3.4400e-003	0.0129	0.0163	0.0000	45.0455	45.0455	0.0146	0.0000	45.4097

Unmitigated Construction Off-Site

	ROG	NOx	CO	SO2	Fugitive PM10	Exhaust PM10	PM10 Total	Fugitive PM2.5	Exhaust PM2.5	PM2.5 Total	Bio- CO2	NBio- CO2	Total CO2	CH4	N2O	CO2e
Category	tons/yr										MT/yr					
Hauling	0.0000	0.0000	0.0000	0.0000	0.0000	0.0000	0.0000	0.0000	0.0000	0.0000	0.0000	0.0000	0.0000	0.0000	0.0000	0.0000
Vendor	0.0000	0.0000	0.0000	0.0000	0.0000	0.0000	0.0000	0.0000	0.0000	0.0000	0.0000	0.0000	0.0000	0.0000	0.0000	0.0000
Worker	2.0700e-003	1.5000e-003	0.0157	5.0000e-005	5.2600e-003	3.0000e-005	5.3000e-003	1.4000e-003	3.0000e-005	1.4300e-003	0.0000	4.2102	4.2102	1.1000e-004	0.0000	4.2129
Total	2.0700e-003	1.5000e-003	0.0157	5.0000e-005	5.2600e-003	3.0000e-005	5.3000e-003	1.4000e-003	3.0000e-005	1.4300e-003	0.0000	4.2102	4.2102	1.1000e-004	0.0000	4.2129

Alta Cuvee Mixed-Use Project - San Bernardino-South Coast County, Annual

3.3 Site Preparation - 2022

Mitigated Construction On-Site

	ROG	NOx	CO	SO2	Fugitive PM10	Exhaust PM10	PM10 Total	Fugitive PM2.5	Exhaust PM2.5	PM2.5 Total	Bio- CO2	NBio- CO2	Total CO2	CH4	N2O	CO2e
Category	tons/yr										MT/yr					
Fugitive Dust					0.0124	0.0000	0.0124	1.3400e-003	0.0000	1.3400e-003	0.0000	0.0000	0.0000	0.0000	0.0000	0.0000
Off-Road	6.3000e-003	0.0273	0.2502	5.1000e-004		8.4000e-004	8.4000e-004		8.4000e-004	8.4000e-004	0.0000	45.0454	45.0454	0.0146	0.0000	45.4096
Total	6.3000e-003	0.0273	0.2502	5.1000e-004	0.0124	8.4000e-004	0.0133	1.3400e-003	8.4000e-004	2.1800e-003	0.0000	45.0454	45.0454	0.0146	0.0000	45.4096

Mitigated Construction Off-Site

	ROG	NOx	CO	SO2	Fugitive PM10	Exhaust PM10	PM10 Total	Fugitive PM2.5	Exhaust PM2.5	PM2.5 Total	Bio- CO2	NBio- CO2	Total CO2	CH4	N2O	CO2e
Category	tons/yr										MT/yr					
Hauling	0.0000	0.0000	0.0000	0.0000	0.0000	0.0000	0.0000	0.0000	0.0000	0.0000	0.0000	0.0000	0.0000	0.0000	0.0000	0.0000
Vendor	0.0000	0.0000	0.0000	0.0000	0.0000	0.0000	0.0000	0.0000	0.0000	0.0000	0.0000	0.0000	0.0000	0.0000	0.0000	0.0000
Worker	2.0700e-003	1.5000e-003	0.0157	5.0000e-005	5.2600e-003	3.0000e-005	5.3000e-003	1.4000e-003	3.0000e-005	1.4300e-003	0.0000	4.2102	4.2102	1.1000e-004	0.0000	4.2129
Total	2.0700e-003	1.5000e-003	0.0157	5.0000e-005	5.2600e-003	3.0000e-005	5.3000e-003	1.4000e-003	3.0000e-005	1.4300e-003	0.0000	4.2102	4.2102	1.1000e-004	0.0000	4.2129

Alta Cuvee Mixed-Use Project - San Bernardino-South Coast County, Annual

3.4 Trenching/Utilities - East Building - 2022

Unmitigated Construction On-Site

	ROG	NOx	CO	SO2	Fugitive PM10	Exhaust PM10	PM10 Total	Fugitive PM2.5	Exhaust PM2.5	PM2.5 Total	Bio- CO2	NBio- CO2	Total CO2	CH4	N2O	CO2e
Category	tons/yr										MT/yr					
Fugitive Dust					0.0139	0.0000	0.0139	1.5600e-003	0.0000	1.5600e-003	0.0000	0.0000	0.0000	0.0000	0.0000	0.0000
Off-Road	0.0225	0.2454	0.1448	3.1000e-004		0.0123	0.0123		0.0113	0.0113	0.0000	26.9238	26.9238	8.7100e-003	0.0000	27.1415
Total	0.0225	0.2454	0.1448	3.1000e-004	0.0139	0.0123	0.0262	1.5600e-003	0.0113	0.0129	0.0000	26.9238	26.9238	8.7100e-003	0.0000	27.1415

Unmitigated Construction Off-Site

	ROG	NOx	CO	SO2	Fugitive PM10	Exhaust PM10	PM10 Total	Fugitive PM2.5	Exhaust PM2.5	PM2.5 Total	Bio- CO2	NBio- CO2	Total CO2	CH4	N2O	CO2e
Category	tons/yr										MT/yr					
Hauling	8.2500e-003	0.3078	0.0524	1.0900e-003	0.0248	7.7000e-004	0.0256	6.8100e-003	7.4000e-004	7.5500e-003	0.0000	105.4147	105.4147	5.8500e-003	0.0000	105.5610
Vendor	0.0000	0.0000	0.0000	0.0000	0.0000	0.0000	0.0000	0.0000	0.0000	0.0000	0.0000	0.0000	0.0000	0.0000	0.0000	0.0000
Worker	2.0700e-003	1.5000e-003	0.0157	5.0000e-005	5.2600e-003	3.0000e-005	5.3000e-003	1.4000e-003	3.0000e-005	1.4300e-003	0.0000	4.2102	4.2102	1.1000e-004	0.0000	4.2129
Total	0.0103	0.3093	0.0680	1.1400e-003	0.0300	8.0000e-004	0.0309	8.2100e-003	7.7000e-004	8.9800e-003	0.0000	109.6248	109.6248	5.9600e-003	0.0000	109.7739

Alta Cuvee Mixed-Use Project - San Bernardino-South Coast County, Annual

3.4 Trenching/Utilities - East Building - 2022

Mitigated Construction On-Site

	ROG	NOx	CO	SO2	Fugitive PM10	Exhaust PM10	PM10 Total	Fugitive PM2.5	Exhaust PM2.5	PM2.5 Total	Bio- CO2	NBio- CO2	Total CO2	CH4	N2O	CO2e
Category	tons/yr										MT/yr					
Fugitive Dust					5.4300e-003	0.0000	5.4300e-003	6.1000e-004	0.0000	6.1000e-004	0.0000	0.0000	0.0000	0.0000	0.0000	0.0000
Off-Road	3.7600e-003	0.0163	0.1741	3.1000e-004		5.0000e-004	5.0000e-004		5.0000e-004	5.0000e-004	0.0000	26.9238	26.9238	8.7100e-003	0.0000	27.1415
Total	3.7600e-003	0.0163	0.1741	3.1000e-004	5.4300e-003	5.0000e-004	5.9300e-003	6.1000e-004	5.0000e-004	1.1100e-003	0.0000	26.9238	26.9238	8.7100e-003	0.0000	27.1415

Mitigated Construction Off-Site

	ROG	NOx	CO	SO2	Fugitive PM10	Exhaust PM10	PM10 Total	Fugitive PM2.5	Exhaust PM2.5	PM2.5 Total	Bio- CO2	NBio- CO2	Total CO2	CH4	N2O	CO2e
Category	tons/yr										MT/yr					
Hauling	8.2500e-003	0.3078	0.0524	1.0900e-003	0.0248	7.7000e-004	0.0256	6.8100e-003	7.4000e-004	7.5500e-003	0.0000	105.4147	105.4147	5.8500e-003	0.0000	105.5610
Vendor	0.0000	0.0000	0.0000	0.0000	0.0000	0.0000	0.0000	0.0000	0.0000	0.0000	0.0000	0.0000	0.0000	0.0000	0.0000	0.0000
Worker	2.0700e-003	1.5000e-003	0.0157	5.0000e-005	5.2600e-003	3.0000e-005	5.3000e-003	1.4000e-003	3.0000e-005	1.4300e-003	0.0000	4.2102	4.2102	1.1000e-004	0.0000	4.2129
Total	0.0103	0.3093	0.0680	1.1400e-003	0.0300	8.0000e-004	0.0309	8.2100e-003	7.7000e-004	8.9800e-003	0.0000	109.6248	109.6248	5.9600e-003	0.0000	109.7739

Alta Cuvee Mixed-Use Project - San Bernardino-South Coast County, Annual

3.5 Construction - East Building - 2022

Unmitigated Construction On-Site

	ROG	NOx	CO	SO2	Fugitive PM10	Exhaust PM10	PM10 Total	Fugitive PM2.5	Exhaust PM2.5	PM2.5 Total	Bio- CO2	NBio- CO2	Total CO2	CH4	N2O	CO2e
Category	tons/yr										MT/yr					
Off-Road	0.0881	0.9112	1.2874	2.1400e-003		0.0386	0.0386		0.0377	0.0377	0.0000	185.4550	185.4550	0.0310	0.0000	186.2294
Total	0.0881	0.9112	1.2874	2.1400e-003		0.0386	0.0386		0.0377	0.0377	0.0000	185.4550	185.4550	0.0310	0.0000	186.2294

Unmitigated Construction Off-Site

	ROG	NOx	CO	SO2	Fugitive PM10	Exhaust PM10	PM10 Total	Fugitive PM2.5	Exhaust PM2.5	PM2.5 Total	Bio- CO2	NBio- CO2	Total CO2	CH4	N2O	CO2e
Category	tons/yr										MT/yr					
Hauling	0.0000	0.0000	0.0000	0.0000	0.0000	0.0000	0.0000	0.0000	0.0000	0.0000	0.0000	0.0000	0.0000	0.0000	0.0000	0.0000
Vendor	9.1900e-003	0.3428	0.0682	9.8000e-004	0.0235	5.2000e-004	0.0240	6.7700e-003	5.0000e-004	7.2700e-003	0.0000	93.7047	93.7047	6.1500e-003	0.0000	93.8584
Worker	0.0801	0.0582	0.6078	1.8000e-003	0.2039	1.2900e-003	0.2052	0.0542	1.1900e-003	0.0554	0.0000	163.1432	163.1432	4.2500e-003	0.0000	163.2494
Total	0.0892	0.4009	0.6760	2.7800e-003	0.2274	1.8100e-003	0.2292	0.0609	1.6900e-003	0.0626	0.0000	256.8479	256.8479	0.0104	0.0000	257.1079

Alta Cuvee Mixed-Use Project - San Bernardino-South Coast County, Annual

3.5 Construction - East Building - 2022

Mitigated Construction On-Site

	ROG	NOx	CO	SO2	Fugitive PM10	Exhaust PM10	PM10 Total	Fugitive PM2.5	Exhaust PM2.5	PM2.5 Total	Bio- CO2	NBio- CO2	Total CO2	CH4	N2O	CO2e
Category	tons/yr										MT/yr					
Off-Road	0.0268	0.2407	1.4474	2.1400e-003		3.1300e-003	3.1300e-003		3.1300e-003	3.1300e-003	0.0000	185.4548	185.4548	0.0310	0.0000	186.2291
Total	0.0268	0.2407	1.4474	2.1400e-003		3.1300e-003	3.1300e-003		3.1300e-003	3.1300e-003	0.0000	185.4548	185.4548	0.0310	0.0000	186.2291

Mitigated Construction Off-Site

	ROG	NOx	CO	SO2	Fugitive PM10	Exhaust PM10	PM10 Total	Fugitive PM2.5	Exhaust PM2.5	PM2.5 Total	Bio- CO2	NBio- CO2	Total CO2	CH4	N2O	CO2e
Category	tons/yr										MT/yr					
Hauling	0.0000	0.0000	0.0000	0.0000	0.0000	0.0000	0.0000	0.0000	0.0000	0.0000	0.0000	0.0000	0.0000	0.0000	0.0000	0.0000
Vendor	9.1900e-003	0.3428	0.0682	9.8000e-004	0.0235	5.2000e-004	0.0240	6.7700e-003	5.0000e-004	7.2700e-003	0.0000	93.7047	93.7047	6.1500e-003	0.0000	93.8584
Worker	0.0801	0.0582	0.6078	1.8000e-003	0.2039	1.2900e-003	0.2052	0.0542	1.1900e-003	0.0554	0.0000	163.1432	163.1432	4.2500e-003	0.0000	163.2494
Total	0.0892	0.4009	0.6760	2.7800e-003	0.2274	1.8100e-003	0.2292	0.0609	1.6900e-003	0.0626	0.0000	256.8479	256.8479	0.0104	0.0000	257.1079

Alta Cuvee Mixed-Use Project - San Bernardino-South Coast County, Annual

3.5 Construction - East Building - 2023

Unmitigated Construction On-Site

	ROG	NOx	CO	SO2	Fugitive PM10	Exhaust PM10	PM10 Total	Fugitive PM2.5	Exhaust PM2.5	PM2.5 Total	Bio- CO2	NBio- CO2	Total CO2	CH4	N2O	CO2e
Category	tons/yr										MT/yr					
Off-Road	0.1379	1.4294	2.1566	3.5900e-003		0.0566	0.0566		0.0552	0.0552	0.0000	311.0997	311.0997	0.0513	0.0000	312.3832
Total	0.1379	1.4294	2.1566	3.5900e-003		0.0566	0.0566		0.0552	0.0552	0.0000	311.0997	311.0997	0.0513	0.0000	312.3832

Unmitigated Construction Off-Site

	ROG	NOx	CO	SO2	Fugitive PM10	Exhaust PM10	PM10 Total	Fugitive PM2.5	Exhaust PM2.5	PM2.5 Total	Bio- CO2	NBio- CO2	Total CO2	CH4	N2O	CO2e
Category	tons/yr										MT/yr					
Hauling	0.0000	0.0000	0.0000	0.0000	0.0000	0.0000	0.0000	0.0000	0.0000	0.0000	0.0000	0.0000	0.0000	0.0000	0.0000	0.0000
Vendor	0.0116	0.4433	0.0987	1.6000e-003	0.0393	4.3000e-004	0.0398	0.0114	4.1000e-004	0.0118	0.0000	152.8593	152.8593	8.2900e-003	0.0000	153.0665
Worker	0.1258	0.0878	0.9345	2.9100e-003	0.3421	2.1100e-003	0.3442	0.0909	1.9400e-003	0.0928	0.0000	263.3840	263.3840	6.3800e-003	0.0000	263.5436
Total	0.1374	0.5311	1.0332	4.5100e-003	0.3814	2.5400e-003	0.3840	0.1022	2.3500e-003	0.1046	0.0000	416.2433	416.2433	0.0147	0.0000	416.6101

Alta Cuvee Mixed-Use Project - San Bernardino-South Coast County, Annual

3.5 Construction - East Building - 2023

Mitigated Construction On-Site

	ROG	NOx	CO	SO2	Fugitive PM10	Exhaust PM10	PM10 Total	Fugitive PM2.5	Exhaust PM2.5	PM2.5 Total	Bio- CO2	NBio- CO2	Total CO2	CH4	N2O	CO2e
Category	tons/yr										MT/yr					
Off-Road	0.0450	0.4038	2.4279	3.5900e-003		5.2500e-003	5.2500e-003		5.2500e-003	5.2500e-003	0.0000	311.0993	311.0993	0.0513	0.0000	312.3828
Total	0.0450	0.4038	2.4279	3.5900e-003		5.2500e-003	5.2500e-003		5.2500e-003	5.2500e-003	0.0000	311.0993	311.0993	0.0513	0.0000	312.3828

Mitigated Construction Off-Site

	ROG	NOx	CO	SO2	Fugitive PM10	Exhaust PM10	PM10 Total	Fugitive PM2.5	Exhaust PM2.5	PM2.5 Total	Bio- CO2	NBio- CO2	Total CO2	CH4	N2O	CO2e
Category	tons/yr										MT/yr					
Hauling	0.0000	0.0000	0.0000	0.0000	0.0000	0.0000	0.0000	0.0000	0.0000	0.0000	0.0000	0.0000	0.0000	0.0000	0.0000	0.0000
Vendor	0.0116	0.4433	0.0987	1.6000e-003	0.0393	4.3000e-004	0.0398	0.0114	4.1000e-004	0.0118	0.0000	152.8593	152.8593	8.2900e-003	0.0000	153.0665
Worker	0.1258	0.0878	0.9345	2.9100e-003	0.3421	2.1100e-003	0.3442	0.0909	1.9400e-003	0.0928	0.0000	263.3840	263.3840	6.3800e-003	0.0000	263.5436
Total	0.1374	0.5311	1.0332	4.5100e-003	0.3814	2.5400e-003	0.3840	0.1022	2.3500e-003	0.1046	0.0000	416.2433	416.2433	0.0147	0.0000	416.6101

Alta Cuvee Mixed-Use Project - San Bernardino-South Coast County, Annual

3.5 Construction - East Building - 2024

Unmitigated Construction On-Site

	ROG	NOx	CO	SO2	Fugitive PM10	Exhaust PM10	PM10 Total	Fugitive PM2.5	Exhaust PM2.5	PM2.5 Total	Bio- CO2	NBio- CO2	Total CO2	CH4	N2O	CO2e
Category	tons/yr										MT/yr					
Off-Road	0.0175	0.1829	0.2902	4.8000e-004		6.7100e-003	6.7100e-003		6.5500e-003	6.5500e-003	0.0000	41.8762	41.8762	6.8300e-003	0.0000	42.0469
Total	0.0175	0.1829	0.2902	4.8000e-004		6.7100e-003	6.7100e-003		6.5500e-003	6.5500e-003	0.0000	41.8762	41.8762	6.8300e-003	0.0000	42.0469

Unmitigated Construction Off-Site

	ROG	NOx	CO	SO2	Fugitive PM10	Exhaust PM10	PM10 Total	Fugitive PM2.5	Exhaust PM2.5	PM2.5 Total	Bio- CO2	NBio- CO2	Total CO2	CH4	N2O	CO2e
Category	tons/yr										MT/yr					
Hauling	0.0000	0.0000	0.0000	0.0000	0.0000	0.0000	0.0000	0.0000	0.0000	0.0000	0.0000	0.0000	0.0000	0.0000	0.0000	0.0000
Vendor	1.5400e-003	0.0600	0.0128	2.1000e-004	5.3000e-003	6.0000e-005	5.3500e-003	1.5300e-003	6.0000e-005	1.5800e-003	0.0000	20.5543	20.5543	1.1200e-003	0.0000	20.5821
Worker	0.0160	0.0107	0.1171	3.8000e-004	0.0461	2.8000e-004	0.0463	0.0122	2.6000e-004	0.0125	0.0000	34.3054	34.3054	7.8000e-004	0.0000	34.3250
Total	0.0175	0.0707	0.1299	5.9000e-004	0.0514	3.4000e-004	0.0517	0.0138	3.2000e-004	0.0141	0.0000	54.8597	54.8597	1.9000e-003	0.0000	54.9072

Alta Cuvee Mixed-Use Project - San Bernardino-South Coast County, Annual

3.5 Construction - East Building - 2024

Mitigated Construction On-Site

	ROG	NOx	CO	SO2	Fugitive PM10	Exhaust PM10	PM10 Total	Fugitive PM2.5	Exhaust PM2.5	PM2.5 Total	Bio- CO2	NBio- CO2	Total CO2	CH4	N2O	CO2e
Category	tons/yr										MT/yr					
Off-Road	6.0600e-003	0.0544	0.3268	4.8000e-004		7.1000e-004	7.1000e-004		7.1000e-004	7.1000e-004	0.0000	41.8762	41.8762	6.8300e-003	0.0000	42.0469
Total	6.0600e-003	0.0544	0.3268	4.8000e-004		7.1000e-004	7.1000e-004		7.1000e-004	7.1000e-004	0.0000	41.8762	41.8762	6.8300e-003	0.0000	42.0469

Mitigated Construction Off-Site

	ROG	NOx	CO	SO2	Fugitive PM10	Exhaust PM10	PM10 Total	Fugitive PM2.5	Exhaust PM2.5	PM2.5 Total	Bio- CO2	NBio- CO2	Total CO2	CH4	N2O	CO2e
Category	tons/yr										MT/yr					
Hauling	0.0000	0.0000	0.0000	0.0000	0.0000	0.0000	0.0000	0.0000	0.0000	0.0000	0.0000	0.0000	0.0000	0.0000	0.0000	0.0000
Vendor	1.5400e-003	0.0600	0.0128	2.1000e-004	5.3000e-003	6.0000e-005	5.3500e-003	1.5300e-003	6.0000e-005	1.5800e-003	0.0000	20.5543	20.5543	1.1200e-003	0.0000	20.5821
Worker	0.0160	0.0107	0.1171	3.8000e-004	0.0461	2.8000e-004	0.0463	0.0122	2.6000e-004	0.0125	0.0000	34.3054	34.3054	7.8000e-004	0.0000	34.3250
Total	0.0175	0.0707	0.1299	5.9000e-004	0.0514	3.4000e-004	0.0517	0.0138	3.2000e-004	0.0141	0.0000	54.8597	54.8597	1.9000e-003	0.0000	54.9072

Alta Cuvee Mixed-Use Project - San Bernardino-South Coast County, Annual

3.6 Grading - 2022

Unmitigated Construction On-Site

	ROG	NOx	CO	SO2	Fugitive PM10	Exhaust PM10	PM10 Total	Fugitive PM2.5	Exhaust PM2.5	PM2.5 Total	Bio- CO2	NBio- CO2	Total CO2	CH4	N2O	CO2e
Category	tons/yr										MT/yr					
Fugitive Dust					0.0239	0.0000	0.0239	2.5800e-003	0.0000	2.5800e-003	0.0000	0.0000	0.0000	0.0000	0.0000	0.0000
Off-Road	0.0230	0.2670	0.1480	3.8000e-004		0.0105	0.0105		9.6800e-003	9.6800e-003	0.0000	33.7841	33.7841	0.0109	0.0000	34.0573
Total	0.0230	0.2670	0.1480	3.8000e-004	0.0239	0.0105	0.0344	2.5800e-003	9.6800e-003	0.0123	0.0000	33.7841	33.7841	0.0109	0.0000	34.0573

Unmitigated Construction Off-Site

	ROG	NOx	CO	SO2	Fugitive PM10	Exhaust PM10	PM10 Total	Fugitive PM2.5	Exhaust PM2.5	PM2.5 Total	Bio- CO2	NBio- CO2	Total CO2	CH4	N2O	CO2e
Category	tons/yr										MT/yr					
Hauling	0.0000	0.0000	0.0000	0.0000	0.0000	0.0000	0.0000	0.0000	0.0000	0.0000	0.0000	0.0000	0.0000	0.0000	0.0000	0.0000
Vendor	0.0000	0.0000	0.0000	0.0000	0.0000	0.0000	0.0000	0.0000	0.0000	0.0000	0.0000	0.0000	0.0000	0.0000	0.0000	0.0000
Worker	1.5500e-003	1.1300e-003	0.0118	3.0000e-005	3.9500e-003	2.0000e-005	3.9700e-003	1.0500e-003	2.0000e-005	1.0700e-003	0.0000	3.1576	3.1576	8.0000e-005	0.0000	3.1597
Total	1.5500e-003	1.1300e-003	0.0118	3.0000e-005	3.9500e-003	2.0000e-005	3.9700e-003	1.0500e-003	2.0000e-005	1.0700e-003	0.0000	3.1576	3.1576	8.0000e-005	0.0000	3.1597

Alta Cuvee Mixed-Use Project - San Bernardino-South Coast County, Annual

3.6 Grading - 2022

Mitigated Construction On-Site

	ROG	NOx	CO	SO2	Fugitive PM10	Exhaust PM10	PM10 Total	Fugitive PM2.5	Exhaust PM2.5	PM2.5 Total	Bio- CO2	NBio- CO2	Total CO2	CH4	N2O	CO2e
Category	tons/yr										MT/yr					
Fugitive Dust					9.3100e-003	0.0000	9.3100e-003	1.0000e-003	0.0000	1.0000e-003	0.0000	0.0000	0.0000	0.0000	0.0000	0.0000
Off-Road	4.7200e-003	0.0205	0.1877	3.8000e-004		6.3000e-004	6.3000e-004		6.3000e-004	6.3000e-004	0.0000	33.7841	33.7841	0.0109	0.0000	34.0572
Total	4.7200e-003	0.0205	0.1877	3.8000e-004	9.3100e-003	6.3000e-004	9.9400e-003	1.0000e-003	6.3000e-004	1.6300e-003	0.0000	33.7841	33.7841	0.0109	0.0000	34.0572

Mitigated Construction Off-Site

	ROG	NOx	CO	SO2	Fugitive PM10	Exhaust PM10	PM10 Total	Fugitive PM2.5	Exhaust PM2.5	PM2.5 Total	Bio- CO2	NBio- CO2	Total CO2	CH4	N2O	CO2e
Category	tons/yr										MT/yr					
Hauling	0.0000	0.0000	0.0000	0.0000	0.0000	0.0000	0.0000	0.0000	0.0000	0.0000	0.0000	0.0000	0.0000	0.0000	0.0000	0.0000
Vendor	0.0000	0.0000	0.0000	0.0000	0.0000	0.0000	0.0000	0.0000	0.0000	0.0000	0.0000	0.0000	0.0000	0.0000	0.0000	0.0000
Worker	1.5500e-003	1.1300e-003	0.0118	3.0000e-005	3.9500e-003	2.0000e-005	3.9700e-003	1.0500e-003	2.0000e-005	1.0700e-003	0.0000	3.1576	3.1576	8.0000e-005	0.0000	3.1597
Total	1.5500e-003	1.1300e-003	0.0118	3.0000e-005	3.9500e-003	2.0000e-005	3.9700e-003	1.0500e-003	2.0000e-005	1.0700e-003	0.0000	3.1576	3.1576	8.0000e-005	0.0000	3.1597

Alta Cuvee Mixed-Use Project - San Bernardino-South Coast County, Annual

3.7 Trenching/Utilities - West Building - 2022

Unmitigated Construction On-Site

	ROG	NOx	CO	SO2	Fugitive PM10	Exhaust PM10	PM10 Total	Fugitive PM2.5	Exhaust PM2.5	PM2.5 Total	Bio- CO2	NBio- CO2	Total CO2	CH4	N2O	CO2e
Category	tons/yr										MT/yr					
Fugitive Dust					6.9600e-003	0.0000	6.9600e-003	7.8000e-004	0.0000	7.8000e-004	0.0000	0.0000	0.0000	0.0000	0.0000	0.0000
Off-Road	0.0113	0.1227	0.0724	1.5000e-004		6.1300e-003	6.1300e-003		5.6400e-003	5.6400e-003	0.0000	13.4619	13.4619	4.3500e-003	0.0000	13.5708
Total	0.0113	0.1227	0.0724	1.5000e-004	6.9600e-003	6.1300e-003	0.0131	7.8000e-004	5.6400e-003	6.4200e-003	0.0000	13.4619	13.4619	4.3500e-003	0.0000	13.5708

Unmitigated Construction Off-Site

	ROG	NOx	CO	SO2	Fugitive PM10	Exhaust PM10	PM10 Total	Fugitive PM2.5	Exhaust PM2.5	PM2.5 Total	Bio- CO2	NBio- CO2	Total CO2	CH4	N2O	CO2e
Category	tons/yr										MT/yr					
Hauling	4.1200e-003	0.1539	0.0262	5.5000e-004	0.0124	3.9000e-004	0.0128	3.4000e-003	3.7000e-004	3.7700e-003	0.0000	52.7073	52.7073	2.9300e-003	0.0000	52.7805
Vendor	0.0000	0.0000	0.0000	0.0000	0.0000	0.0000	0.0000	0.0000	0.0000	0.0000	0.0000	0.0000	0.0000	0.0000	0.0000	0.0000
Worker	1.0300e-003	7.5000e-004	7.8400e-003	2.0000e-005	2.6300e-003	2.0000e-005	2.6500e-003	7.0000e-004	2.0000e-005	7.1000e-004	0.0000	2.1051	2.1051	5.0000e-005	0.0000	2.1064
Total	5.1500e-003	0.1547	0.0340	5.7000e-004	0.0150	4.1000e-004	0.0154	4.1000e-003	3.9000e-004	4.4800e-003	0.0000	54.8124	54.8124	2.9800e-003	0.0000	54.8870

Alta Cuvee Mixed-Use Project - San Bernardino-South Coast County, Annual

3.7 Trenching/Utilities - West Building - 2022

Mitigated Construction On-Site

	ROG	NOx	CO	SO2	Fugitive PM10	Exhaust PM10	PM10 Total	Fugitive PM2.5	Exhaust PM2.5	PM2.5 Total	Bio- CO2	NBio- CO2	Total CO2	CH4	N2O	CO2e
Category	tons/yr										MT/yr					
Fugitive Dust					2.7200e-003	0.0000	2.7200e-003	3.0000e-004	0.0000	3.0000e-004	0.0000	0.0000	0.0000	0.0000	0.0000	0.0000
Off-Road	1.8800e-003	8.1500e-003	0.0870	1.5000e-004		2.5000e-004	2.5000e-004		2.5000e-004	2.5000e-004	0.0000	13.4619	13.4619	4.3500e-003	0.0000	13.5707
Total	1.8800e-003	8.1500e-003	0.0870	1.5000e-004	2.7200e-003	2.5000e-004	2.9700e-003	3.0000e-004	2.5000e-004	5.5000e-004	0.0000	13.4619	13.4619	4.3500e-003	0.0000	13.5707

Mitigated Construction Off-Site

	ROG	NOx	CO	SO2	Fugitive PM10	Exhaust PM10	PM10 Total	Fugitive PM2.5	Exhaust PM2.5	PM2.5 Total	Bio- CO2	NBio- CO2	Total CO2	CH4	N2O	CO2e
Category	tons/yr										MT/yr					
Hauling	4.1200e-003	0.1539	0.0262	5.5000e-004	0.0124	3.9000e-004	0.0128	3.4000e-003	3.7000e-004	3.7700e-003	0.0000	52.7073	52.7073	2.9300e-003	0.0000	52.7805
Vendor	0.0000	0.0000	0.0000	0.0000	0.0000	0.0000	0.0000	0.0000	0.0000	0.0000	0.0000	0.0000	0.0000	0.0000	0.0000	0.0000
Worker	1.0300e-003	7.5000e-004	7.8400e-003	2.0000e-005	2.6300e-003	2.0000e-005	2.6500e-003	7.0000e-004	2.0000e-005	7.1000e-004	0.0000	2.1051	2.1051	5.0000e-005	0.0000	2.1064
Total	5.1500e-003	0.1547	0.0340	5.7000e-004	0.0150	4.1000e-004	0.0154	4.1000e-003	3.9000e-004	4.4800e-003	0.0000	54.8124	54.8124	2.9800e-003	0.0000	54.8870

Alta Cuvee Mixed-Use Project - San Bernardino-South Coast County, Annual

3.8 Construction - West Building - 2022

Unmitigated Construction On-Site

	ROG	NOx	CO	SO2	Fugitive PM10	Exhaust PM10	PM10 Total	Fugitive PM2.5	Exhaust PM2.5	PM2.5 Total	Bio- CO2	NBio- CO2	Total CO2	CH4	N2O	CO2e
Category	tons/yr										MT/yr					
Off-Road	7.9500e-003	0.0794	0.1074	1.8000e-004		3.5700e-003	3.5700e-003		3.5000e-003	3.5000e-003	0.0000	15.6237	15.6237	2.2500e-003	0.0000	15.6799
Total	7.9500e-003	0.0794	0.1074	1.8000e-004		3.5700e-003	3.5700e-003		3.5000e-003	3.5000e-003	0.0000	15.6237	15.6237	2.2500e-003	0.0000	15.6799

Unmitigated Construction Off-Site

	ROG	NOx	CO	SO2	Fugitive PM10	Exhaust PM10	PM10 Total	Fugitive PM2.5	Exhaust PM2.5	PM2.5 Total	Bio- CO2	NBio- CO2	Total CO2	CH4	N2O	CO2e
Category	tons/yr										MT/yr					
Hauling	0.0000	0.0000	0.0000	0.0000	0.0000	0.0000	0.0000	0.0000	0.0000	0.0000	0.0000	0.0000	0.0000	0.0000	0.0000	0.0000
Vendor	8.9000e-004	0.0332	6.6000e-003	9.0000e-005	2.2700e-003	5.0000e-005	2.3200e-003	6.6000e-004	5.0000e-005	7.0000e-004	0.0000	9.0682	9.0682	5.9000e-004	0.0000	9.0831
Worker	7.7500e-003	5.6300e-003	0.0588	1.7000e-004	0.0197	1.2000e-004	0.0199	5.2400e-003	1.2000e-004	5.3600e-003	0.0000	15.7881	15.7881	4.1000e-004	0.0000	15.7983
Total	8.6400e-003	0.0388	0.0654	2.6000e-004	0.0220	1.7000e-004	0.0222	5.9000e-003	1.7000e-004	6.0600e-003	0.0000	24.8563	24.8563	1.0000e-003	0.0000	24.8814

Alta Cuvee Mixed-Use Project - San Bernardino-South Coast County, Annual

3.8 Construction - West Building - 2022

Mitigated Construction On-Site

	ROG	NOx	CO	SO2	Fugitive PM10	Exhaust PM10	PM10 Total	Fugitive PM2.5	Exhaust PM2.5	PM2.5 Total	Bio- CO2	NBio- CO2	Total CO2	CH4	N2O	CO2e
Category	tons/yr										MT/yr					
Off-Road	1.9500e-003	8.4300e-003	0.1200	1.8000e-004		2.6000e-004	2.6000e-004		2.6000e-004	2.6000e-004	0.0000	15.6237	15.6237	2.2500e-003	0.0000	15.6799
Total	1.9500e-003	8.4300e-003	0.1200	1.8000e-004		2.6000e-004	2.6000e-004		2.6000e-004	2.6000e-004	0.0000	15.6237	15.6237	2.2500e-003	0.0000	15.6799

Mitigated Construction Off-Site

	ROG	NOx	CO	SO2	Fugitive PM10	Exhaust PM10	PM10 Total	Fugitive PM2.5	Exhaust PM2.5	PM2.5 Total	Bio- CO2	NBio- CO2	Total CO2	CH4	N2O	CO2e
Category	tons/yr										MT/yr					
Hauling	0.0000	0.0000	0.0000	0.0000	0.0000	0.0000	0.0000	0.0000	0.0000	0.0000	0.0000	0.0000	0.0000	0.0000	0.0000	0.0000
Vendor	8.9000e-004	0.0332	6.6000e-003	9.0000e-005	2.2700e-003	5.0000e-005	2.3200e-003	6.6000e-004	5.0000e-005	7.0000e-004	0.0000	9.0682	9.0682	5.9000e-004	0.0000	9.0831
Worker	7.7500e-003	5.6300e-003	0.0588	1.7000e-004	0.0197	1.2000e-004	0.0199	5.2400e-003	1.2000e-004	5.3600e-003	0.0000	15.7881	15.7881	4.1000e-004	0.0000	15.7983
Total	8.6400e-003	0.0388	0.0654	2.6000e-004	0.0220	1.7000e-004	0.0222	5.9000e-003	1.7000e-004	6.0600e-003	0.0000	24.8563	24.8563	1.0000e-003	0.0000	24.8814

Alta Cuvee Mixed-Use Project - San Bernardino-South Coast County, Annual

3.8 Construction - West Building - 2023

Unmitigated Construction On-Site

	ROG	NOx	CO	SO2	Fugitive PM10	Exhaust PM10	PM10 Total	Fugitive PM2.5	Exhaust PM2.5	PM2.5 Total	Bio- CO2	NBio- CO2	Total CO2	CH4	N2O	CO2e
Category	tons/yr										MT/yr					
Off-Road	0.1284	1.2839	1.8585	3.1300e-003		0.0540	0.0540		0.0529	0.0529	0.0000	270.8250	270.8250	0.0383	0.0000	271.7829
Total	0.1284	1.2839	1.8585	3.1300e-003		0.0540	0.0540		0.0529	0.0529	0.0000	270.8250	270.8250	0.0383	0.0000	271.7829

Unmitigated Construction Off-Site

	ROG	NOx	CO	SO2	Fugitive PM10	Exhaust PM10	PM10 Total	Fugitive PM2.5	Exhaust PM2.5	PM2.5 Total	Bio- CO2	NBio- CO2	Total CO2	CH4	N2O	CO2e
Category	tons/yr										MT/yr					
Hauling	0.0000	0.0000	0.0000	0.0000	0.0000	0.0000	0.0000	0.0000	0.0000	0.0000	0.0000	0.0000	0.0000	0.0000	0.0000	0.0000
Vendor	0.0116	0.4433	0.0987	1.6000e-003	0.0393	4.3000e-004	0.0398	0.0114	4.1000e-004	0.0118	0.0000	152.8593	152.8593	8.2900e-003	0.0000	153.0665
Worker	0.1258	0.0878	0.9345	2.9100e-003	0.3421	2.1100e-003	0.3442	0.0909	1.9400e-003	0.0928	0.0000	263.3840	263.3840	6.3800e-003	0.0000	263.5436
Total	0.1374	0.5311	1.0332	4.5100e-003	0.3814	2.5400e-003	0.3840	0.1022	2.3500e-003	0.1046	0.0000	416.2433	416.2433	0.0147	0.0000	416.6101

Alta Cuvee Mixed-Use Project - San Bernardino-South Coast County, Annual

3.8 Construction - West Building - 2023

Mitigated Construction On-Site

	ROG	NOx	CO	SO2	Fugitive PM10	Exhaust PM10	PM10 Total	Fugitive PM2.5	Exhaust PM2.5	PM2.5 Total	Bio- CO2	NBio- CO2	Total CO2	CH4	N2O	CO2e
Category	tons/yr										MT/yr					
Off-Road	0.0337	0.1462	2.0800	3.1300e-003		4.5000e-003	4.5000e-003		4.5000e-003	4.5000e-003	0.0000	270.8247	270.8247	0.0383	0.0000	271.7825
Total	0.0337	0.1462	2.0800	3.1300e-003		4.5000e-003	4.5000e-003		4.5000e-003	4.5000e-003	0.0000	270.8247	270.8247	0.0383	0.0000	271.7825

Mitigated Construction Off-Site

	ROG	NOx	CO	SO2	Fugitive PM10	Exhaust PM10	PM10 Total	Fugitive PM2.5	Exhaust PM2.5	PM2.5 Total	Bio- CO2	NBio- CO2	Total CO2	CH4	N2O	CO2e
Category	tons/yr										MT/yr					
Hauling	0.0000	0.0000	0.0000	0.0000	0.0000	0.0000	0.0000	0.0000	0.0000	0.0000	0.0000	0.0000	0.0000	0.0000	0.0000	0.0000
Vendor	0.0116	0.4433	0.0987	1.6000e-003	0.0393	4.3000e-004	0.0398	0.0114	4.1000e-004	0.0118	0.0000	152.8593	152.8593	8.2900e-003	0.0000	153.0665
Worker	0.1258	0.0878	0.9345	2.9100e-003	0.3421	2.1100e-003	0.3442	0.0909	1.9400e-003	0.0928	0.0000	263.3840	263.3840	6.3800e-003	0.0000	263.5436
Total	0.1374	0.5311	1.0332	4.5100e-003	0.3814	2.5400e-003	0.3840	0.1022	2.3500e-003	0.1046	0.0000	416.2433	416.2433	0.0147	0.0000	416.6101

Alta Cuvee Mixed-Use Project - San Bernardino-South Coast County, Annual

3.8 Construction - West Building - 2024

Unmitigated Construction On-Site

	ROG	NOx	CO	SO2	Fugitive PM10	Exhaust PM10	PM10 Total	Fugitive PM2.5	Exhaust PM2.5	PM2.5 Total	Bio- CO2	NBio- CO2	Total CO2	CH4	N2O	CO2e
Category	tons/yr										MT/yr					
Off-Road	0.0233	0.2337	0.3572	6.0000e-004		9.1100e-003	9.1100e-003		8.9100e-003	8.9100e-003	0.0000	52.0781	52.0781	7.2500e-003	0.0000	52.2593
Total	0.0233	0.2337	0.3572	6.0000e-004		9.1100e-003	9.1100e-003		8.9100e-003	8.9100e-003	0.0000	52.0781	52.0781	7.2500e-003	0.0000	52.2593

Unmitigated Construction Off-Site

	ROG	NOx	CO	SO2	Fugitive PM10	Exhaust PM10	PM10 Total	Fugitive PM2.5	Exhaust PM2.5	PM2.5 Total	Bio- CO2	NBio- CO2	Total CO2	CH4	N2O	CO2e
Category	tons/yr										MT/yr					
Hauling	0.0000	0.0000	0.0000	0.0000	0.0000	0.0000	0.0000	0.0000	0.0000	0.0000	0.0000	0.0000	0.0000	0.0000	0.0000	0.0000
Vendor	2.2100e-003	0.0857	0.0183	3.1000e-004	7.5700e-003	8.0000e-005	7.6500e-003	2.1800e-003	8.0000e-005	2.2600e-003	0.0000	29.3632	29.3632	1.5900e-003	0.0000	29.4031
Worker	0.0228	0.0153	0.1673	5.4000e-004	0.0658	4.0000e-004	0.0662	0.0175	3.7000e-004	0.0178	0.0000	49.0077	49.0077	1.1200e-003	0.0000	49.0358
Total	0.0250	0.1010	0.1856	8.5000e-004	0.0734	4.8000e-004	0.0738	0.0197	4.5000e-004	0.0201	0.0000	78.3710	78.3710	2.7100e-003	0.0000	78.4388

Alta Cuvee Mixed-Use Project - San Bernardino-South Coast County, Annual

3.8 Construction - West Building - 2024

Mitigated Construction On-Site

	ROG	NOx	CO	SO2	Fugitive PM10	Exhaust PM10	PM10 Total	Fugitive PM2.5	Exhaust PM2.5	PM2.5 Total	Bio- CO2	NBio- CO2	Total CO2	CH4	N2O	CO2e
Category	tons/yr										MT/yr					
Off-Road	6.4900e-003	0.0281	0.4000	6.0000e-004		8.6000e-004	8.6000e-004		8.6000e-004	8.6000e-004	0.0000	52.0780	52.0780	7.2500e-003	0.0000	52.2592
Total	6.4900e-003	0.0281	0.4000	6.0000e-004		8.6000e-004	8.6000e-004		8.6000e-004	8.6000e-004	0.0000	52.0780	52.0780	7.2500e-003	0.0000	52.2592

Mitigated Construction Off-Site

	ROG	NOx	CO	SO2	Fugitive PM10	Exhaust PM10	PM10 Total	Fugitive PM2.5	Exhaust PM2.5	PM2.5 Total	Bio- CO2	NBio- CO2	Total CO2	CH4	N2O	CO2e
Category	tons/yr										MT/yr					
Hauling	0.0000	0.0000	0.0000	0.0000	0.0000	0.0000	0.0000	0.0000	0.0000	0.0000	0.0000	0.0000	0.0000	0.0000	0.0000	0.0000
Vendor	2.2100e-003	0.0857	0.0183	3.1000e-004	7.5700e-003	8.0000e-005	7.6500e-003	2.1800e-003	8.0000e-005	2.2600e-003	0.0000	29.3632	29.3632	1.5900e-003	0.0000	29.4031
Worker	0.0228	0.0153	0.1673	5.4000e-004	0.0658	4.0000e-004	0.0662	0.0175	3.7000e-004	0.0178	0.0000	49.0077	49.0077	1.1200e-003	0.0000	49.0358
Total	0.0250	0.1010	0.1856	8.5000e-004	0.0734	4.8000e-004	0.0738	0.0197	4.5000e-004	0.0201	0.0000	78.3710	78.3710	2.7100e-003	0.0000	78.4388

Alta Cuvee Mixed-Use Project - San Bernardino-South Coast County, Annual

3.9 Paving - East Building - 2023

Unmitigated Construction On-Site

	ROG	NOx	CO	SO2	Fugitive PM10	Exhaust PM10	PM10 Total	Fugitive PM2.5	Exhaust PM2.5	PM2.5 Total	Bio- CO2	NBio- CO2	Total CO2	CH4	N2O	CO2e
Category	tons/yr										MT/yr					
Off-Road	0.0558	0.5504	0.7876	1.2300e-003		0.0276	0.0276		0.0254	0.0254	0.0000	108.1451	108.1451	0.0350	0.0000	109.0195
Paving	2.3600e-003					0.0000	0.0000		0.0000	0.0000	0.0000	0.0000	0.0000	0.0000	0.0000	0.0000
Total	0.0581	0.5504	0.7876	1.2300e-003		0.0276	0.0276		0.0254	0.0254	0.0000	108.1451	108.1451	0.0350	0.0000	109.0195

Unmitigated Construction Off-Site

	ROG	NOx	CO	SO2	Fugitive PM10	Exhaust PM10	PM10 Total	Fugitive PM2.5	Exhaust PM2.5	PM2.5 Total	Bio- CO2	NBio- CO2	Total CO2	CH4	N2O	CO2e
Category	tons/yr										MT/yr					
Hauling	0.0000	0.0000	0.0000	0.0000	0.0000	0.0000	0.0000	0.0000	0.0000	0.0000	0.0000	0.0000	0.0000	0.0000	0.0000	0.0000
Vendor	4.0300e-003	0.1535	0.0342	5.5000e-004	0.0136	1.5000e-004	0.0138	3.9300e-003	1.4000e-004	4.0700e-003	0.0000	52.9128	52.9128	2.8700e-003	0.0000	52.9846
Worker	8.7100e-003	6.0800e-003	0.0647	2.0000e-004	0.0237	1.5000e-004	0.0238	6.2900e-003	1.3000e-004	6.4200e-003	0.0000	18.2343	18.2343	4.4000e-004	0.0000	18.2453
Total	0.0127	0.1595	0.0989	7.5000e-004	0.0373	3.0000e-004	0.0376	0.0102	2.7000e-004	0.0105	0.0000	71.1471	71.1471	3.3100e-003	0.0000	71.2299

Alta Cuvee Mixed-Use Project - San Bernardino-South Coast County, Annual

3.9 Paving - East Building - 2023

Mitigated Construction On-Site

	ROG	NOx	CO	SO2	Fugitive PM10	Exhaust PM10	PM10 Total	Fugitive PM2.5	Exhaust PM2.5	PM2.5 Total	Bio- CO2	NBio- CO2	Total CO2	CH4	N2O	CO2e
Category	tons/yr										MT/yr					
Off-Road	0.0152	0.0656	0.9340	1.2300e-003		2.0200e-003	2.0200e-003		2.0200e-003	2.0200e-003	0.0000	108.1450	108.1450	0.0350	0.0000	109.0194
Paving	2.3600e-003					0.0000	0.0000		0.0000	0.0000	0.0000	0.0000	0.0000	0.0000	0.0000	0.0000
Total	0.0175	0.0656	0.9340	1.2300e-003		2.0200e-003	2.0200e-003		2.0200e-003	2.0200e-003	0.0000	108.1450	108.1450	0.0350	0.0000	109.0194

Mitigated Construction Off-Site

	ROG	NOx	CO	SO2	Fugitive PM10	Exhaust PM10	PM10 Total	Fugitive PM2.5	Exhaust PM2.5	PM2.5 Total	Bio- CO2	NBio- CO2	Total CO2	CH4	N2O	CO2e
Category	tons/yr										MT/yr					
Hauling	0.0000	0.0000	0.0000	0.0000	0.0000	0.0000	0.0000	0.0000	0.0000	0.0000	0.0000	0.0000	0.0000	0.0000	0.0000	0.0000
Vendor	4.0300e-003	0.1535	0.0342	5.5000e-004	0.0136	1.5000e-004	0.0138	3.9300e-003	1.4000e-004	4.0700e-003	0.0000	52.9128	52.9128	2.8700e-003	0.0000	52.9846
Worker	8.7100e-003	6.0800e-003	0.0647	2.0000e-004	0.0237	1.5000e-004	0.0238	6.2900e-003	1.3000e-004	6.4200e-003	0.0000	18.2343	18.2343	4.4000e-004	0.0000	18.2453
Total	0.0127	0.1595	0.0989	7.5000e-004	0.0373	3.0000e-004	0.0376	0.0102	2.7000e-004	0.0105	0.0000	71.1471	71.1471	3.3100e-003	0.0000	71.2299

Alta Cuvee Mixed-Use Project - San Bernardino-South Coast County, Annual

3.10 Architectural Coatings - East Bldg - 2023

Unmitigated Construction On-Site

	ROG	NOx	CO	SO2	Fugitive PM10	Exhaust PM10	PM10 Total	Fugitive PM2.5	Exhaust PM2.5	PM2.5 Total	Bio- CO2	NBio- CO2	Total CO2	CH4	N2O	CO2e
Category	tons/yr										MT/yr					
Archit. Coating	0.7629					0.0000	0.0000		0.0000	0.0000	0.0000	0.0000	0.0000	0.0000	0.0000	0.0000
Off-Road	0.0160	0.0996	0.0802	1.8000e-004		4.4300e-003	4.4300e-003		4.4300e-003	4.4300e-003	0.0000	11.7843	11.7843	1.3100e-003	0.0000	11.8169
Total	0.7789	0.0996	0.0802	1.8000e-004		4.4300e-003	4.4300e-003		4.4300e-003	4.4300e-003	0.0000	11.7843	11.7843	1.3100e-003	0.0000	11.8169

Unmitigated Construction Off-Site

	ROG	NOx	CO	SO2	Fugitive PM10	Exhaust PM10	PM10 Total	Fugitive PM2.5	Exhaust PM2.5	PM2.5 Total	Bio- CO2	NBio- CO2	Total CO2	CH4	N2O	CO2e
Category	tons/yr										MT/yr					
Hauling	0.0000	0.0000	0.0000	0.0000	0.0000	0.0000	0.0000	0.0000	0.0000	0.0000	0.0000	0.0000	0.0000	0.0000	0.0000	0.0000
Vendor	0.0000	0.0000	0.0000	0.0000	0.0000	0.0000	0.0000	0.0000	0.0000	0.0000	0.0000	0.0000	0.0000	0.0000	0.0000	0.0000
Worker	5.8100e-003	4.0500e-003	0.0431	1.3000e-004	0.0158	1.0000e-004	0.0159	4.1900e-003	9.0000e-005	4.2800e-003	0.0000	12.1562	12.1562	2.9000e-004	0.0000	12.1636
Total	5.8100e-003	4.0500e-003	0.0431	1.3000e-004	0.0158	1.0000e-004	0.0159	4.1900e-003	9.0000e-005	4.2800e-003	0.0000	12.1562	12.1562	2.9000e-004	0.0000	12.1636

Alta Cuvee Mixed-Use Project - San Bernardino-South Coast County, Annual

3.10 Architectural Coatings - East Bldg - 2023

Mitigated Construction On-Site

	ROG	NOx	CO	SO2	Fugitive PM10	Exhaust PM10	PM10 Total	Fugitive PM2.5	Exhaust PM2.5	PM2.5 Total	Bio- CO2	NBio- CO2	Total CO2	CH4	N2O	CO2e
Category	tons/yr										MT/yr					
Archit. Coating	0.7629					0.0000	0.0000		0.0000	0.0000	0.0000	0.0000	0.0000	0.0000	0.0000	0.0000
Off-Road	0.0160	0.0996	0.0802	1.8000e-004		4.4300e-003	4.4300e-003		4.4300e-003	4.4300e-003	0.0000	11.7842	11.7842	1.3100e-003	0.0000	11.8169
Total	0.7789	0.0996	0.0802	1.8000e-004		4.4300e-003	4.4300e-003		4.4300e-003	4.4300e-003	0.0000	11.7842	11.7842	1.3100e-003	0.0000	11.8169

Mitigated Construction Off-Site

	ROG	NOx	CO	SO2	Fugitive PM10	Exhaust PM10	PM10 Total	Fugitive PM2.5	Exhaust PM2.5	PM2.5 Total	Bio- CO2	NBio- CO2	Total CO2	CH4	N2O	CO2e
Category	tons/yr										MT/yr					
Hauling	0.0000	0.0000	0.0000	0.0000	0.0000	0.0000	0.0000	0.0000	0.0000	0.0000	0.0000	0.0000	0.0000	0.0000	0.0000	0.0000
Vendor	0.0000	0.0000	0.0000	0.0000	0.0000	0.0000	0.0000	0.0000	0.0000	0.0000	0.0000	0.0000	0.0000	0.0000	0.0000	0.0000
Worker	5.8100e-003	4.0500e-003	0.0431	1.3000e-004	0.0158	1.0000e-004	0.0159	4.1900e-003	9.0000e-005	4.2800e-003	0.0000	12.1562	12.1562	2.9000e-004	0.0000	12.1636
Total	5.8100e-003	4.0500e-003	0.0431	1.3000e-004	0.0158	1.0000e-004	0.0159	4.1900e-003	9.0000e-005	4.2800e-003	0.0000	12.1562	12.1562	2.9000e-004	0.0000	12.1636

Alta Cuvee Mixed-Use Project - San Bernardino-South Coast County, Annual

3.11 Paving - West Building - 2023

Unmitigated Construction On-Site

	ROG	NOx	CO	SO2	Fugitive PM10	Exhaust PM10	PM10 Total	Fugitive PM2.5	Exhaust PM2.5	PM2.5 Total	Bio- CO2	NBio- CO2	Total CO2	CH4	N2O	CO2e
Category	tons/yr										MT/yr					
Off-Road	0.0496	0.4892	0.7000	1.0900e-003		0.0245	0.0245		0.0225	0.0225	0.0000	96.1290	96.1290	0.0311	0.0000	96.9062
Paving	2.3600e-003					0.0000	0.0000		0.0000	0.0000	0.0000	0.0000	0.0000	0.0000	0.0000	0.0000
Total	0.0519	0.4892	0.7000	1.0900e-003		0.0245	0.0245		0.0225	0.0225	0.0000	96.1290	96.1290	0.0311	0.0000	96.9062

Unmitigated Construction Off-Site

	ROG	NOx	CO	SO2	Fugitive PM10	Exhaust PM10	PM10 Total	Fugitive PM2.5	Exhaust PM2.5	PM2.5 Total	Bio- CO2	NBio- CO2	Total CO2	CH4	N2O	CO2e
Category	tons/yr										MT/yr					
Hauling	0.0000	0.0000	0.0000	0.0000	0.0000	0.0000	0.0000	0.0000	0.0000	0.0000	0.0000	0.0000	0.0000	0.0000	0.0000	0.0000
Vendor	3.5800e-003	0.1364	0.0304	4.9000e-004	0.0121	1.3000e-004	0.0122	3.4900e-003	1.3000e-004	3.6200e-003	0.0000	47.0336	47.0336	2.5500e-003	0.0000	47.0974
Worker	7.7400e-003	5.4000e-003	0.0575	1.8000e-004	0.0211	1.3000e-004	0.0212	5.5900e-003	1.2000e-004	5.7100e-003	0.0000	16.2083	16.2083	3.9000e-004	0.0000	16.2181
Total	0.0113	0.1418	0.0879	6.7000e-004	0.0332	2.6000e-004	0.0334	9.0800e-003	2.5000e-004	9.3300e-003	0.0000	63.2419	63.2419	2.9400e-003	0.0000	63.3155

Alta Cuvee Mixed-Use Project - San Bernardino-South Coast County, Annual

3.11 Paving - West Building - 2023

Mitigated Construction On-Site

	ROG	NOx	CO	SO2	Fugitive PM10	Exhaust PM10	PM10 Total	Fugitive PM2.5	Exhaust PM2.5	PM2.5 Total	Bio- CO2	NBio- CO2	Total CO2	CH4	N2O	CO2e
Category	tons/yr										MT/yr					
Off-Road	0.0135	0.0583	0.8302	1.0900e-003		1.8000e-003	1.8000e-003		1.8000e-003	1.8000e-003	0.0000	96.1288	96.1288	0.0311	0.0000	96.9061
Paving	2.3600e-003					0.0000	0.0000		0.0000	0.0000	0.0000	0.0000	0.0000	0.0000	0.0000	0.0000
Total	0.0158	0.0583	0.8302	1.0900e-003		1.8000e-003	1.8000e-003		1.8000e-003	1.8000e-003	0.0000	96.1288	96.1288	0.0311	0.0000	96.9061

Mitigated Construction Off-Site

	ROG	NOx	CO	SO2	Fugitive PM10	Exhaust PM10	PM10 Total	Fugitive PM2.5	Exhaust PM2.5	PM2.5 Total	Bio- CO2	NBio- CO2	Total CO2	CH4	N2O	CO2e
Category	tons/yr										MT/yr					
Hauling	0.0000	0.0000	0.0000	0.0000	0.0000	0.0000	0.0000	0.0000	0.0000	0.0000	0.0000	0.0000	0.0000	0.0000	0.0000	0.0000
Vendor	3.5800e-003	0.1364	0.0304	4.9000e-004	0.0121	1.3000e-004	0.0122	3.4900e-003	1.3000e-004	3.6200e-003	0.0000	47.0336	47.0336	2.5500e-003	0.0000	47.0974
Worker	7.7400e-003	5.4000e-003	0.0575	1.8000e-004	0.0211	1.3000e-004	0.0212	5.5900e-003	1.2000e-004	5.7100e-003	0.0000	16.2083	16.2083	3.9000e-004	0.0000	16.2181
Total	0.0113	0.1418	0.0879	6.7000e-004	0.0332	2.6000e-004	0.0334	9.0800e-003	2.5000e-004	9.3300e-003	0.0000	63.2419	63.2419	2.9400e-003	0.0000	63.3155

Alta Cuvee Mixed-Use Project - San Bernardino-South Coast County, Annual

3.12 Architectural Coatings - West Bldg - 2023

Unmitigated Construction On-Site

	ROG	NOx	CO	SO2	Fugitive PM10	Exhaust PM10	PM10 Total	Fugitive PM2.5	Exhaust PM2.5	PM2.5 Total	Bio- CO2	NBio- CO2	Total CO2	CH4	N2O	CO2e
Category	tons/yr										MT/yr					
Archit. Coating	0.7629					0.0000	0.0000		0.0000	0.0000	0.0000	0.0000	0.0000	0.0000	0.0000	0.0000
Off-Road	0.0160	0.0996	0.0802	1.8000e-004		4.4300e-003	4.4300e-003		4.4300e-003	4.4300e-003	0.0000	11.7843	11.7843	1.3100e-003	0.0000	11.8169
Total	0.7789	0.0996	0.0802	1.8000e-004		4.4300e-003	4.4300e-003		4.4300e-003	4.4300e-003	0.0000	11.7843	11.7843	1.3100e-003	0.0000	11.8169

Unmitigated Construction Off-Site

	ROG	NOx	CO	SO2	Fugitive PM10	Exhaust PM10	PM10 Total	Fugitive PM2.5	Exhaust PM2.5	PM2.5 Total	Bio- CO2	NBio- CO2	Total CO2	CH4	N2O	CO2e
Category	tons/yr										MT/yr					
Hauling	0.0000	0.0000	0.0000	0.0000	0.0000	0.0000	0.0000	0.0000	0.0000	0.0000	0.0000	0.0000	0.0000	0.0000	0.0000	0.0000
Vendor	0.0000	0.0000	0.0000	0.0000	0.0000	0.0000	0.0000	0.0000	0.0000	0.0000	0.0000	0.0000	0.0000	0.0000	0.0000	0.0000
Worker	5.8100e-003	4.0500e-003	0.0431	1.3000e-004	0.0158	1.0000e-004	0.0159	4.1900e-003	9.0000e-005	4.2800e-003	0.0000	12.1562	12.1562	2.9000e-004	0.0000	12.1636
Total	5.8100e-003	4.0500e-003	0.0431	1.3000e-004	0.0158	1.0000e-004	0.0159	4.1900e-003	9.0000e-005	4.2800e-003	0.0000	12.1562	12.1562	2.9000e-004	0.0000	12.1636

Alta Cuvee Mixed-Use Project - San Bernardino-South Coast County, Annual

3.12 Architectural Coatings - West Bldg - 2023

Mitigated Construction On-Site

	ROG	NOx	CO	SO2	Fugitive PM10	Exhaust PM10	PM10 Total	Fugitive PM2.5	Exhaust PM2.5	PM2.5 Total	Bio- CO2	NBio- CO2	Total CO2	CH4	N2O	CO2e
Category	tons/yr										MT/yr					
Archit. Coating	0.7629					0.0000	0.0000		0.0000	0.0000	0.0000	0.0000	0.0000	0.0000	0.0000	0.0000
Off-Road	0.0160	0.0996	0.0802	1.8000e-004		4.4300e-003	4.4300e-003		4.4300e-003	4.4300e-003	0.0000	11.7842	11.7842	1.3100e-003	0.0000	11.8169
Total	0.7789	0.0996	0.0802	1.8000e-004		4.4300e-003	4.4300e-003		4.4300e-003	4.4300e-003	0.0000	11.7842	11.7842	1.3100e-003	0.0000	11.8169

Mitigated Construction Off-Site

	ROG	NOx	CO	SO2	Fugitive PM10	Exhaust PM10	PM10 Total	Fugitive PM2.5	Exhaust PM2.5	PM2.5 Total	Bio- CO2	NBio- CO2	Total CO2	CH4	N2O	CO2e
Category	tons/yr										MT/yr					
Hauling	0.0000	0.0000	0.0000	0.0000	0.0000	0.0000	0.0000	0.0000	0.0000	0.0000	0.0000	0.0000	0.0000	0.0000	0.0000	0.0000
Vendor	0.0000	0.0000	0.0000	0.0000	0.0000	0.0000	0.0000	0.0000	0.0000	0.0000	0.0000	0.0000	0.0000	0.0000	0.0000	0.0000
Worker	5.8100e-003	4.0500e-003	0.0431	1.3000e-004	0.0158	1.0000e-004	0.0159	4.1900e-003	9.0000e-005	4.2800e-003	0.0000	12.1562	12.1562	2.9000e-004	0.0000	12.1636
Total	5.8100e-003	4.0500e-003	0.0431	1.3000e-004	0.0158	1.0000e-004	0.0159	4.1900e-003	9.0000e-005	4.2800e-003	0.0000	12.1562	12.1562	2.9000e-004	0.0000	12.1636

4.0 Operational Detail - Mobile

Alta Cuvee Mixed-Use Project - San Bernardino-South Coast County, Annual

4.1 Mitigation Measures Mobile

	ROG	NOx	CO	SO2	Fugitive PM10	Exhaust PM10	PM10 Total	Fugitive PM2.5	Exhaust PM2.5	PM2.5 Total	Bio- CO2	NBio- CO2	Total CO2	CH4	N2O	CO2e
Category	tons/yr										MT/yr					
Mitigated	0.4708	0.8495	6.1092	0.0183	2.0571	0.0134	2.0705	0.5470	0.0124	0.5594	0.0000	1,658.1154	1,658.1154	0.0598	0.0000	1,659.6103
Unmitigated	0.4708	0.8495	6.1092	0.0183	2.0571	0.0134	2.0705	0.5470	0.0124	0.5594	0.0000	1,658.1154	1,658.1154	0.0598	0.0000	1,659.6103

4.2 Trip Summary Information

Land Use	Average Daily Trip Rate			Unmitigated	Mitigated
	Weekday	Saturday	Sunday	Annual VMT	Annual VMT
Apartments Mid Rise	1,420.10	1,420.10	1420.10	5,200,168	5,200,168
City Park	0.00	0.00	0.00		
Condo/Townhouse	0.00	0.00	0.00		
Enclosed Parking with Elevator	0.00	0.00	0.00		
General Office Building	0.00	0.00	0.00		
Parking Lot	0.00	0.00	0.00		
Recreational Swimming Pool	0.00	0.00	0.00		
Strip Mall	83.16	83.16	83.16	304,501	304,501
Total	1,503.25	1,503.25	1,503.25	5,504,669	5,504,669

4.3 Trip Type Information

Alta Cuvee Mixed-Use Project - San Bernardino-South Coast County, Annual

Land Use	Miles			Trip %			Trip Purpose %		
	H-W or C-W	H-S or C-C	H-O or C-NW	H-W or C-W	H-S or C-C	H-O or C-NW	Primary	Diverted	Pass-by
Apartments Mid Rise	10.06	10.06	10.06	40.00	20.00	40.00	100	0	0
City Park	16.60	8.40	6.90	33.00	48.00	19.00	66	28	6
Condo/Townhouse	14.70	5.90	8.70	40.00	20.00	40.00	100	0	0
Enclosed Parking with Elevator	16.60	8.40	6.90	0.00	0.00	0.00	0	0	0
General Office Building	16.60	8.40	6.90	33.00	48.00	19.00	77	19	4
Parking Lot	16.60	8.40	6.90	0.00	0.00	0.00	0	0	0
Recreational Swimming Pool	16.60	8.40	6.90	33.00	48.00	19.00	52	39	9
Strip Mall	10.06	10.06	10.06	16.60	64.40	19.00	100	0	0

4.4 Fleet Mix

Land Use	LDA	LDT1	LDT2	MDV	LHD1	LHD2	MHD	HHD	OBUS	UBUS	MCY	SBUS	MH
Apartments Mid Rise	0.600000	0.060000	0.190000	0.120000	0.015000	0.005000	0.000000	0.000000	0.000000	0.000000	0.010000	0.000000	0.000000
City Park	0.558745	0.035303	0.181800	0.111169	0.014289	0.004794	0.018611	0.065078	0.001365	0.001491	0.005725	0.000799	0.000830
Condo/Townhouse	0.600000	0.060000	0.190000	0.120000	0.015000	0.005000	0.000000	0.000000	0.000000	0.000000	0.010000	0.000000	0.000000
Enclosed Parking with Elevator	0.558745	0.035303	0.181800	0.111169	0.014289	0.004794	0.018611	0.065078	0.001365	0.001491	0.005725	0.000799	0.000830
General Office Building	0.558745	0.035303	0.181800	0.111169	0.014289	0.004794	0.018611	0.065078	0.001365	0.001491	0.005725	0.000799	0.000830
Parking Lot	0.558745	0.035303	0.181800	0.111169	0.014289	0.004794	0.018611	0.065078	0.001365	0.001491	0.005725	0.000799	0.000830
Recreational Swimming Pool	0.558745	0.035303	0.181800	0.111169	0.014289	0.004794	0.018611	0.065078	0.001365	0.001491	0.005725	0.000799	0.000830
Strip Mall	0.558745	0.035303	0.181800	0.111169	0.014289	0.004794	0.018611	0.065078	0.001365	0.001491	0.005725	0.000799	0.000830

5.0 Energy Detail

Historical Energy Use: N

5.1 Mitigation Measures Energy

Install Energy Efficient Appliances

Alta Cuvee Mixed-Use Project - San Bernardino-South Coast County, Annual

	ROG	NOx	CO	SO2	Fugitive PM10	Exhaust PM10	PM10 Total	Fugitive PM2.5	Exhaust PM2.5	PM2.5 Total	Bio- CO2	NBio- CO2	Total CO2	CH4	N2O	CO2e
Category	tons/yr										MT/yr					
Electricity Mitigated						0.0000	0.0000		0.0000	0.0000	0.0000	453.9159	453.9159	0.0210	4.3400e-003	455.7337
Electricity Unmitigated						0.0000	0.0000		0.0000	0.0000	0.0000	461.7416	461.7416	0.0213	4.4200e-003	463.5908
NaturalGas Mitigated	0.0203	0.1737	0.0744	1.1100e-003		0.0140	0.0140		0.0140	0.0140	0.0000	201.0779	201.0779	3.8500e-003	3.6900e-003	202.2728
NaturalGas Unmitigated	0.0203	0.1737	0.0744	1.1100e-003		0.0140	0.0140		0.0140	0.0140	0.0000	201.0779	201.0779	3.8500e-003	3.6900e-003	202.2728

Alta Cuvee Mixed-Use Project - San Bernardino-South Coast County, Annual

5.2 Energy by Land Use - NaturalGas

Unmitigated

	NaturalGas Use	ROG	NOx	CO	SO2	Fugitive PM10	Exhaust PM10	PM10 Total	Fugitive PM2.5	Exhaust PM2.5	PM2.5 Total	Bio- CO2	NBio- CO2	Total CO2	CH4	N2O	CO2e
Land Use	kBTU/yr	tons/yr										MT/yr					
Apartments Mid Rise	3.72494e+006	0.0201	0.1716	0.0730	1.1000e-003		0.0139	0.0139		0.0139	0.0139	0.0000	198.7769	198.7769	3.8100e-003	3.6400e-003	199.9581
City Park	0	0.0000	0.0000	0.0000	0.0000		0.0000	0.0000		0.0000	0.0000	0.0000	0.0000	0.0000	0.0000	0.0000	0.0000
Condo/Townhouse	21100	1.1000e-004	9.7000e-004	4.1000e-004	1.0000e-005		8.0000e-005	8.0000e-005		8.0000e-005	8.0000e-005	0.0000	1.1260	1.1260	2.0000e-005	2.0000e-005	1.1327
Enclosed Parking with Elevator	0	0.0000	0.0000	0.0000	0.0000		0.0000	0.0000		0.0000	0.0000	0.0000	0.0000	0.0000	0.0000	0.0000	0.0000
General Office Building	16611	9.0000e-005	8.1000e-004	6.8000e-004	0.0000		6.0000e-005	6.0000e-005		6.0000e-005	6.0000e-005	0.0000	0.8864	0.8864	2.0000e-005	2.0000e-005	0.8917
Parking Lot	0	0.0000	0.0000	0.0000	0.0000		0.0000	0.0000		0.0000	0.0000	0.0000	0.0000	0.0000	0.0000	0.0000	0.0000
Recreational Swimming Pool	0	0.0000	0.0000	0.0000	0.0000		0.0000	0.0000		0.0000	0.0000	0.0000	0.0000	0.0000	0.0000	0.0000	0.0000
Strip Mall	5407.92	3.0000e-005	2.7000e-004	2.2000e-004	0.0000		2.0000e-005	2.0000e-005		2.0000e-005	2.0000e-005	0.0000	0.2886	0.2886	1.0000e-005	1.0000e-005	0.2903
Total		0.0203	0.1737	0.0744	1.1100e-003		0.0140	0.0140		0.0140	0.0140	0.0000	201.0779	201.0779	3.8600e-003	3.6900e-003	202.2728

Alta Cuvee Mixed-Use Project - San Bernardino-South Coast County, Annual

5.2 Energy by Land Use - NaturalGas

Mitigated

	NaturalGas Use	ROG	NOx	CO	SO2	Fugitive PM10	Exhaust PM10	PM10 Total	Fugitive PM2.5	Exhaust PM2.5	PM2.5 Total	Bio- CO2	NBio- CO2	Total CO2	CH4	N2O	CO2e
Land Use	kBTU/yr	tons/yr										MT/yr					
Apartments Mid Rise	3.72494e+006	0.0201	0.1716	0.0730	1.1000e-003		0.0139	0.0139		0.0139	0.0139	0.0000	198.7769	198.7769	3.8100e-003	3.6400e-003	199.9581
City Park	0	0.0000	0.0000	0.0000	0.0000		0.0000	0.0000		0.0000	0.0000	0.0000	0.0000	0.0000	0.0000	0.0000	0.0000
Condo/Townhouse	21100	1.1000e-004	9.7000e-004	4.1000e-004	1.0000e-005		8.0000e-005	8.0000e-005		8.0000e-005	8.0000e-005	0.0000	1.1260	1.1260	2.0000e-005	2.0000e-005	1.1327
Enclosed Parking with Elevator	0	0.0000	0.0000	0.0000	0.0000		0.0000	0.0000		0.0000	0.0000	0.0000	0.0000	0.0000	0.0000	0.0000	0.0000
General Office Building	16611	9.0000e-005	8.1000e-004	6.8000e-004	0.0000		6.0000e-005	6.0000e-005		6.0000e-005	6.0000e-005	0.0000	0.8864	0.8864	2.0000e-005	2.0000e-005	0.8917
Parking Lot	0	0.0000	0.0000	0.0000	0.0000		0.0000	0.0000		0.0000	0.0000	0.0000	0.0000	0.0000	0.0000	0.0000	0.0000
Recreational Swimming Pool	0	0.0000	0.0000	0.0000	0.0000		0.0000	0.0000		0.0000	0.0000	0.0000	0.0000	0.0000	0.0000	0.0000	0.0000
Strip Mall	5407.92	3.0000e-005	2.7000e-004	2.2000e-004	0.0000		2.0000e-005	2.0000e-005		2.0000e-005	2.0000e-005	0.0000	0.2886	0.2886	1.0000e-005	1.0000e-005	0.2903
Total		0.0203	0.1737	0.0744	1.1100e-003		0.0140	0.0140		0.0140	0.0140	0.0000	201.0779	201.0779	3.8600e-003	3.6900e-003	202.2728

Alta Cuvee Mixed-Use Project - San Bernardino-South Coast County, Annual

5.3 Energy by Land Use - Electricity

Unmitigated

	Electricity Use	Total CO2	CH4	N2O	CO2e
Land Use	kWh/yr	MT/yr			
Apartments Mid Rise	1.02564e+006	291.9232	0.0135	2.7900e-003	293.0923
City Park	0	0.0000	0.0000	0.0000	0.0000
Condo/Townhouse	4973.76	1.4157	7.0000e-005	1.0000e-005	1.4213
Enclosed Parking with Elevator	488566	139.0581	6.4300e-003	1.3300e-003	139.6150
General Office Building	50885	14.4831	6.7000e-004	1.4000e-004	14.5411
Parking Lot	22641.5	6.4443	3.0000e-004	6.0000e-005	6.4701
Recreational Swimming Pool	0	0.0000	0.0000	0.0000	0.0000
Strip Mall	29573	8.4172	3.9000e-004	8.0000e-005	8.4509
Total		461.7416	0.0214	4.4100e-003	463.5908

Alta Cuvee Mixed-Use Project - San Bernardino-South Coast County, Annual

5.3 Energy by Land Use - Electricity

Mitigated

	Electricity Use	Total CO2	CH4	N2O	CO2e
Land Use	kWh/yr	MT/yr			
Apartments Mid Rise	998148	284.0975	0.0131	2.7200e-003	285.2352
City Park	0	0.0000	0.0000	0.0000	0.0000
Condo/Townhouse	4973.76	1.4157	7.0000e-005	1.0000e-005	1.4213
Enclosed Parking with Elevator	488566	139.0581	6.4300e-003	1.3300e-003	139.6150
General Office Building	50885	14.4831	6.7000e-004	1.4000e-004	14.5411
Parking Lot	22641.5	6.4443	3.0000e-004	6.0000e-005	6.4701
Recreational Swimming Pool	0	0.0000	0.0000	0.0000	0.0000
Strip Mall	29573	8.4172	3.9000e-004	8.0000e-005	8.4509
Total		453.9159	0.0210	4.3400e-003	455.7337

6.0 Area Detail

6.1 Mitigation Measures Area

- Use Low VOC Paint - Residential Interior
- Use Low VOC Paint - Residential Exterior
- Use Low VOC Paint - Non-Residential Exterior
- Use only Natural Gas Hearths

Alta Cuvee Mixed-Use Project - San Bernardino-South Coast County, Annual

	ROG	NOx	CO	SO2	Fugitive PM10	Exhaust PM10	PM10 Total	Fugitive PM2.5	Exhaust PM2.5	PM2.5 Total	Bio- CO2	NBio- CO2	Total CO2	CH4	N2O	CO2e
Category	tons/yr										MT/yr					
Mitigated	1.0161	0.0370	2.6888	1.8000e-004		0.0154	0.0154		0.0154	0.0154	0.0000	11.4037	11.4037	4.3700e-003	1.3000e-004	11.5512
Unmitigated	1.0161	0.0370	2.6888	1.8000e-004		0.0154	0.0154		0.0154	0.0154	0.0000	11.4037	11.4037	4.3700e-003	1.3000e-004	11.5512

6.2 Area by SubCategory

Unmitigated

	ROG	NOx	CO	SO2	Fugitive PM10	Exhaust PM10	PM10 Total	Fugitive PM2.5	Exhaust PM2.5	PM2.5 Total	Bio- CO2	NBio- CO2	Total CO2	CH4	N2O	CO2e
SubCategory	tons/yr										MT/yr					
Architectural Coating	0.0763					0.0000	0.0000		0.0000	0.0000	0.0000	0.0000	0.0000	0.0000	0.0000	0.0000
Consumer Products	0.8579					0.0000	0.0000		0.0000	0.0000	0.0000	0.0000	0.0000	0.0000	0.0000	0.0000
Hearth	7.1000e-004	6.0500e-003	2.5800e-003	4.0000e-005		4.9000e-004	4.9000e-004		4.9000e-004	4.9000e-004	0.0000	7.0120	7.0120	1.3000e-004	1.3000e-004	7.0537
Landscaping	0.0812	0.0309	2.6862	1.4000e-004		0.0149	0.0149		0.0149	0.0149	0.0000	4.3917	4.3917	4.2300e-003	0.0000	4.4975
Total	1.0161	0.0370	2.6888	1.8000e-004		0.0154	0.0154		0.0154	0.0154	0.0000	11.4037	11.4037	4.3600e-003	1.3000e-004	11.5512

Alta Cuvee Mixed-Use Project - San Bernardino-South Coast County, Annual

6.2 Area by SubCategory

Mitigated

	ROG	NOx	CO	SO2	Fugitive PM10	Exhaust PM10	PM10 Total	Fugitive PM2.5	Exhaust PM2.5	PM2.5 Total	Bio- CO2	NBio- CO2	Total CO2	CH4	N2O	CO2e
SubCategory	tons/yr										MT/yr					
Architectural Coating	0.0763					0.0000	0.0000		0.0000	0.0000	0.0000	0.0000	0.0000	0.0000	0.0000	0.0000
Consumer Products	0.8579					0.0000	0.0000		0.0000	0.0000	0.0000	0.0000	0.0000	0.0000	0.0000	0.0000
Hearth	7.1000e-004	6.0500e-003	2.5800e-003	4.0000e-005		4.9000e-004	4.9000e-004		4.9000e-004	4.9000e-004	0.0000	7.0120	7.0120	1.3000e-004	1.3000e-004	7.0537
Landscaping	0.0812	0.0309	2.6862	1.4000e-004		0.0149	0.0149		0.0149	0.0149	0.0000	4.3917	4.3917	4.2300e-003	0.0000	4.4975
Total	1.0161	0.0370	2.6888	1.8000e-004		0.0154	0.0154		0.0154	0.0154	0.0000	11.4037	11.4037	4.3600e-003	1.3000e-004	11.5512

7.0 Water Detail

7.1 Mitigation Measures Water

Install Low Flow Bathroom Faucet

Install Low Flow Kitchen Faucet

Use Water Efficient Irrigation System

Alta Cuvee Mixed-Use Project - San Bernardino-South Coast County, Annual

	Total CO2	CH4	N2O	CO2e
Category	MT/yr			
Mitigated	133.1215	0.8145	0.0203	159.5324
Unmitigated	145.1584	0.8950	0.0223	174.1769

Alta Cuvee Mixed-Use Project - San Bernardino-South Coast County, Annual

7.2 Water by Land Use

Unmitigated

	Indoor/Outdoor Use	Total CO2	CH4	N2O	CO2e
Land Use	Mgal	MT/yr			
Apartments Mid Rise	24.2944 / 10.6385	131.3858	0.7974	0.0199	157.2423
City Park	0 / 0.393189	1.2433	6.0000e-005	1.0000e-005	1.2483
Condo/Townhouse	0 / 0.0410754	0.1299	1.0000e-005	0.0000	0.1304
Enclosed Parking with Elevator	0 / 0	0.0000	0.0000	0.0000	0.0000
General Office Building	0 / 0	0.0000	0.0000	0.0000	0.0000
Parking Lot	0 / 0	0.0000	0.0000	0.0000	0.0000
Recreational Swimming Pool	0 / 0.129772	0.4104	2.0000e-005	0.0000	0.4120
Strip Mall	2.97986 / 0	11.9890	0.0976	2.4000e-003	15.1440
Total		145.1584	0.8951	0.0223	174.1769

Alta Cuvee Mixed-Use Project - San Bernardino-South Coast County, Annual

7.2 Water by Land Use

Mitigated

	Indoor/Outdoor Use	Total CO2	CH4	N2O	CO2e
Land Use	Mgal	MT/yr			
Apartments Mid Rise	22.1079 / 9.98957	120.5367	0.7256	0.0181	144.0699
City Park	0 / 0.369204	1.1675	5.0000e-005	1.0000e-005	1.1722
Condo/Townhouse	0 / 0.0385698	0.1220	1.0000e-005	0.0000	0.1225
Enclosed Parking with Elevator	0 / 0	0.0000	0.0000	0.0000	0.0000
General Office Building	0 / 0	0.0000	0.0000	0.0000	0.0000
Parking Lot	0 / 0	0.0000	0.0000	0.0000	0.0000
Recreational Swimming Pool	0 / 0.121855	0.3853	2.0000e-005	0.0000	0.3869
Strip Mall	2.71167 / 0	10.9100	0.0888	2.1800e-003	13.7810
Total		133.1215	0.8145	0.0203	159.5324

8.0 Waste Detail

8.1 Mitigation Measures Waste

Alta Cuvee Mixed-Use Project - San Bernardino-South Coast County, Annual

Category/Year

	Total CO2	CH4	N2O	CO2e
	MT/yr			
Mitigated	122.9963	7.2689	0.0000	304.7181
Unmitigated	122.9963	7.2689	0.0000	304.7181

Alta Cuvee Mixed-Use Project - San Bernardino-South Coast County, Annual

8.2 Waste by Land Use

Unmitigated

	Waste Disposed	Total CO2	CH4	N2O	CO2e
Land Use	tons	MT/yr			
Apartments Mid Rise	580.32	117.7997	6.9618	0.0000	291.8438
City Park	0	0.0000	0.0000	0.0000	0.0000
Condo/Townhouse	0	0.0000	0.0000	0.0000	0.0000
Enclosed Parking with Elevator	0	0.0000	0.0000	0.0000	0.0000
General Office Building	5.15	1.0454	0.0618	0.0000	2.5899
Parking Lot	0	0.0000	0.0000	0.0000	0.0000
Recreational Swimming Pool	0	0.0000	0.0000	0.0000	0.0000
Strip Mall	20.45	4.1512	0.2453	0.0000	10.2843
Total		122.9963	7.2689	0.0000	304.7181

Alta Cuvee Mixed-Use Project - San Bernardino-South Coast County, Annual

8.2 Waste by Land Use

Mitigated

	Waste Disposed	Total CO2	CH4	N2O	CO2e
Land Use	tons	MT/yr			
Apartments Mid Rise	580.32	117.7997	6.9618	0.0000	291.8438
City Park	0	0.0000	0.0000	0.0000	0.0000
Condo/Townhouse	0	0.0000	0.0000	0.0000	0.0000
Enclosed Parking with Elevator	0	0.0000	0.0000	0.0000	0.0000
General Office Building	5.15	1.0454	0.0618	0.0000	2.5899
Parking Lot	0	0.0000	0.0000	0.0000	0.0000
Recreational Swimming Pool	0	0.0000	0.0000	0.0000	0.0000
Strip Mall	20.45	4.1512	0.2453	0.0000	10.2843
Total		122.9963	7.2689	0.0000	304.7181

9.0 Operational Offroad

Equipment Type	Number	Hours/Day	Days/Year	Horse Power	Load Factor	Fuel Type
----------------	--------	-----------	-----------	-------------	-------------	-----------

10.0 Stationary Equipment

Fire Pumps and Emergency Generators

Alta Cuvee Mixed-Use Project - San Bernardino-South Coast County, Annual

Equipment Type	Number	Hours/Day	Hours/Year	Horse Power	Load Factor	Fuel Type
----------------	--------	-----------	------------	-------------	-------------	-----------

Boilers

Equipment Type	Number	Heat Input/Day	Heat Input/Year	Boiler Rating	Fuel Type
----------------	--------	----------------	-----------------	---------------	-----------

User Defined Equipment

Equipment Type	Number
----------------	--------

11.0 Vegetation

Alta Cuvee Bus Bay - San Bernardino-South Coast County, Annual

Alta Cuvee Bus Bay
San Bernardino-South Coast County, Annual

1.0 Project Characteristics

1.1 Land Usage

Land Uses	Size	Metric	Lot Acreage	Floor Surface Area	Population
Other Asphalt Surfaces	1.00	1000sqft	0.02	1,000.00	0

1.2 Other Project Characteristics

Urbanization	Urban	Wind Speed (m/s)	2.2	Precipitation Freq (Days)	32
Climate Zone	10			Operational Year	2024
Utility Company	Southern California Edison				
CO2 Intensity (lb/MW hr)	627.49	CH4 Intensity (lb/MW hr)	0.029	N2O Intensity (lb/MW hr)	0.006

1.3 User Entered Comments & Non-Default Data

Alta Cuvee Bus Bay - San Bernardino-South Coast County, Annual

Project Characteristics - CO2 Intensity from 2020 RCMU Power Content Label: 630 lbCO2e/MWh (RCMU, 2021)

Land Use - Approximately 850 square feet + buffer.

Construction Phase - Schedule Provided

Off-road Equipment - Other material handling = concrete truck/pump.

Off-road Equipment - Project Inventory

Off-road Equipment - Project Inventory

Off-road Equipment - Project Inventory

Trips and VMT - Modeling accounts for 1 haul load/day during demolition.

Assume 10 workers/day throughout.

Demolition -

Grading -

Energy Use -

Construction Off-road Equipment Mitigation - Compliance with SCAQMD Rule 403 BMPs: watering thrice daily.

Clean Fleet BMP: Tier 4 Equipment > 25 hp

Table Name	Column Name	Default Value	New Value
tblConstEquipMitigation	NumberOfEquipmentMitigated	0.00	1.00
tblConstEquipMitigation	NumberOfEquipmentMitigated	0.00	2.00
tblConstEquipMitigation	NumberOfEquipmentMitigated	0.00	1.00
tblConstEquipMitigation	NumberOfEquipmentMitigated	0.00	1.00
tblConstEquipMitigation	NumberOfEquipmentMitigated	0.00	1.00
tblConstEquipMitigation	NumberOfEquipmentMitigated	0.00	1.00
tblConstEquipMitigation	NumberOfEquipmentMitigated	0.00	1.00
tblConstEquipMitigation	NumberOfEquipmentMitigated	0.00	1.00
tblConstEquipMitigation	NumberOfEquipmentMitigated	0.00	1.00
tblConstEquipMitigation	NumberOfEquipmentMitigated	0.00	8.00
tblConstEquipMitigation	NumberOfEquipmentMitigated	0.00	3.00
tblConstEquipMitigation	NumberOfEquipmentMitigated	0.00	4.00

Alta Cuvee Bus Bay - San Bernardino-South Coast County, Annual

tblConstEquipMitigation	Tier	No Change	Tier 4 Final
tblConstEquipMitigation	Tier	No Change	Tier 4 Final
tblConstEquipMitigation	Tier	No Change	Tier 4 Final
tblConstEquipMitigation	Tier	No Change	Tier 4 Final
tblConstEquipMitigation	Tier	No Change	Tier 4 Final
tblConstEquipMitigation	Tier	No Change	Tier 4 Final
tblConstEquipMitigation	Tier	No Change	Tier 4 Final
tblConstEquipMitigation	Tier	No Change	Tier 4 Final
tblConstEquipMitigation	Tier	No Change	Tier 4 Final
tblConstructionPhase	NumDays	100.00	15.00
tblConstructionPhase	NumDays	10.00	12.00
tblConstructionPhase	NumDays	5.00	3.00
tblConstructionPhase	NumDays	1.00	24.00
tblConstructionPhase	NumDaysWeek	5.00	6.00
tblConstructionPhase	NumDaysWeek	5.00	6.00
tblConstructionPhase	NumDaysWeek	5.00	6.00
tblConstructionPhase	NumDaysWeek	5.00	6.00
tblOffRoadEquipment	OffRoadEquipmentUnitAmount	2.00	1.00
tblOffRoadEquipment	OffRoadEquipmentUnitAmount	2.00	1.00
tblOffRoadEquipment	OffRoadEquipmentUnitAmount	4.00	2.00
tblOffRoadEquipment	UsageHours	8.00	2.00
tblOffRoadEquipment	UsageHours	8.00	6.00
tblOffRoadEquipment	UsageHours	8.00	6.00
tblProjectCharacteristics	CO2IntensityFactor	702.44	627.49
tblTripsAndVMT	HaulingTripNumber	2.00	20.00
tblTripsAndVMT	VendorTripNumber	0.00	4.00
tblTripsAndVMT	VendorTripNumber	0.00	2.00

Alta Cuvee Bus Bay - San Bernardino-South Coast County, Annual

tblTripsAndVMT	WorkerTripNumber	15.00	20.00
tblTripsAndVMT	WorkerTripNumber	15.00	20.00
tblTripsAndVMT	WorkerTripNumber	0.00	20.00
tblTripsAndVMT	WorkerTripNumber	18.00	20.00

2.0 Emissions Summary

Alta Cuvee Bus Bay - San Bernardino-South Coast County, Annual

Quarter	Start Date	End Date	Maximum Unmitigated ROG + NOX (tons/quarter)	Maximum Mitigated ROG + NOX (tons/quarter)
1	1-8-2024	4-7-2024	0.1225	0.0629
		Highest	0.1225	0.0629

2.2 Overall Operational

Unmitigated Operational

	ROG	NOx	CO	SO2	Fugitive PM10	Exhaust PM10	PM10 Total	Fugitive PM2.5	Exhaust PM2.5	PM2.5 Total	Bio- CO2	NBio- CO2	Total CO2	CH4	N2O	CO2e
Category	tons/yr										MT/yr					
Area	8.0000e-005	0.0000	1.0000e-005	0.0000		0.0000	0.0000		0.0000	0.0000	0.0000	2.0000e-005	2.0000e-005	0.0000	0.0000	3.0000e-005
Energy	0.0000	0.0000	0.0000	0.0000		0.0000	0.0000		0.0000	0.0000	0.0000	0.0000	0.0000	0.0000	0.0000	0.0000
Mobile	0.0000	0.0000	0.0000	0.0000	0.0000	0.0000	0.0000	0.0000	0.0000	0.0000	0.0000	0.0000	0.0000	0.0000	0.0000	0.0000
Waste						0.0000	0.0000		0.0000	0.0000	0.0000	0.0000	0.0000	0.0000	0.0000	0.0000
Water						0.0000	0.0000		0.0000	0.0000	0.0000	0.0000	0.0000	0.0000	0.0000	0.0000
Total	8.0000e-005	0.0000	1.0000e-005	0.0000	0.0000	0.0000	0.0000	0.0000	0.0000	0.0000	0.0000	2.0000e-005	2.0000e-005	0.0000	0.0000	3.0000e-005

Alta Cuvee Bus Bay - San Bernardino-South Coast County, Annual

2.2 Overall Operational

Mitigated Operational

	ROG	NOx	CO	SO2	Fugitive PM10	Exhaust PM10	PM10 Total	Fugitive PM2.5	Exhaust PM2.5	PM2.5 Total	Bio- CO2	NBio- CO2	Total CO2	CH4	N2O	CO2e
Category	tons/yr										MT/yr					
Area	8.0000e-005	0.0000	1.0000e-005	0.0000		0.0000	0.0000		0.0000	0.0000	0.0000	2.0000e-005	2.0000e-005	0.0000	0.0000	3.0000e-005
Energy	0.0000	0.0000	0.0000	0.0000		0.0000	0.0000		0.0000	0.0000	0.0000	0.0000	0.0000	0.0000	0.0000	0.0000
Mobile	0.0000	0.0000	0.0000	0.0000	0.0000	0.0000	0.0000	0.0000	0.0000	0.0000	0.0000	0.0000	0.0000	0.0000	0.0000	0.0000
Waste						0.0000	0.0000		0.0000	0.0000	0.0000	0.0000	0.0000	0.0000	0.0000	0.0000
Water						0.0000	0.0000		0.0000	0.0000	0.0000	0.0000	0.0000	0.0000	0.0000	0.0000
Total	8.0000e-005	0.0000	1.0000e-005	0.0000	0.0000	0.0000	0.0000	0.0000	0.0000	0.0000	0.0000	2.0000e-005	2.0000e-005	0.0000	0.0000	3.0000e-005

	ROG	NOx	CO	SO2	Fugitive PM10	Exhaust PM10	PM10 Total	Fugitive PM2.5	Exhaust PM2.5	PM2.5 Total	Bio- CO2	NBio- CO2	Total CO2	CH4	N2O	CO2e
Percent Reduction	0.00	0.00	0.00	0.00	0.00	0.00	0.00	0.00	0.00	0.00	0.00	0.00	0.00	0.00	0.00	0.00

3.0 Construction Detail

Construction Phase

Alta Cuvee Bus Bay - San Bernardino-South Coast County, Annual

Phase Number	Phase Name	Phase Type	Start Date	End Date	Num Days Week	Num Days	Phase Description
1	Demolition	Demolition	1/8/2024	1/20/2024	6	12	
2	Site Preparation	Site Preparation	1/22/2024	2/17/2024	6	24	
3	Building Construction	Building Construction	2/19/2024	3/6/2024	6	15	
4	Paving	Paving	3/7/2024	3/9/2024	6	3	

Acres of Grading (Site Preparation Phase): 0

Acres of Grading (Grading Phase): 0

Acres of Paving: 0.02

Residential Indoor: 0; Residential Outdoor: 0; Non-Residential Indoor: 0; Non-Residential Outdoor: 0; Striped Parking Area: 0 (Architectural Coating – sqft)

OffRoad Equipment

Alta Cuvee Bus Bay - San Bernardino-South Coast County, Annual

Phase Name	Offroad Equipment Type	Amount	Usage Hours	Horse Power	Load Factor
Demolition	Air Compressors	1	4.00	78	0.48
Demolition	Concrete/Industrial Saws	1	2.00	81	0.73
Demolition	Signal Boards	2	8.00	6	0.82
Demolition	Skid Steer Loaders	1	6.00	65	0.37
Demolition	Tractors/Loaders/Backhoes	1	6.00	97	0.37
Site Preparation	Plate Compactors	1	4.00	8	0.43
Site Preparation	Rubber Tired Dozers	1	1.00	247	0.40
Site Preparation	Signal Boards	2	8.00	6	0.82
Site Preparation	Skid Steer Loaders	1	6.00	65	0.37
Site Preparation	Tractors/Loaders/Backhoes	1	6.00	97	0.37
Building Construction	Other Material Handling Equipment	1	6.00	168	0.40
Building Construction	Rough Terrain Forklifts	1	6.00	100	0.40
Building Construction	Signal Boards	2	8.00	6	0.82
Building Construction	Skid Steer Loaders	1	6.00	65	0.37
Building Construction	Tractors/Loaders/Backhoes	1	6.00	97	0.37
Paving	Cement and Mortar Mixers	2	6.00	9	0.56
Paving	Pavers	1	7.00	130	0.42
Paving	Rollers	1	7.00	80	0.38
Paving	Signal Boards	2	8.00	6	0.82
Paving	Tractors/Loaders/Backhoes	1	7.00	97	0.37

Trips and VMT

Alta Cuvee Bus Bay - San Bernardino-South Coast County, Annual

Phase Name	Offroad Equipment Count	Worker Trip Number	Vendor Trip Number	Hauling Trip Number	Worker Trip Length	Vendor Trip Length	Hauling Trip Length	Worker Vehicle Class	Vendor Vehicle Class	Hauling Vehicle Class
Demolition	6	20.00	0.00	20.00	14.70	6.90	20.00	LD_Mix	HDT_Mix	HHDT
Site Preparation	6	20.00	0.00	0.00	14.70	6.90	20.00	LD_Mix	HDT_Mix	HHDT
Building Construction	6	20.00	4.00	0.00	14.70	6.90	20.00	LD_Mix	HDT_Mix	HHDT
Paving	7	20.00	2.00	0.00	14.70	6.90	20.00	LD_Mix	HDT_Mix	HHDT

3.1 Mitigation Measures Construction

Use Cleaner Engines for Construction Equipment

Water Exposed Area

3.2 Demolition - 2024

Unmitigated Construction On-Site

	ROG	NOx	CO	SO2	Fugitive PM10	Exhaust PM10	PM10 Total	Fugitive PM2.5	Exhaust PM2.5	PM2.5 Total	Bio- CO2	NBio- CO2	Total CO2	CH4	N2O	CO2e
Category	tons/yr										MT/yr					
Fugitive Dust					2.1000e-004	0.0000	2.1000e-004	3.0000e-005	0.0000	3.0000e-005	0.0000	0.0000	0.0000	0.0000	0.0000	0.0000
Off-Road	2.8100e-003	0.0231	0.0326	5.0000e-005		1.0000e-003	1.0000e-003		9.6000e-004	9.6000e-004	0.0000	4.4153	4.4153	8.1000e-004	0.0000	4.4357
Total	2.8100e-003	0.0231	0.0326	5.0000e-005	2.1000e-004	1.0000e-003	1.2100e-003	3.0000e-005	9.6000e-004	9.9000e-004	0.0000	4.4153	4.4153	8.1000e-004	0.0000	4.4357

Alta Cuvee Bus Bay - San Bernardino-South Coast County, Annual

3.2 Demolition - 2024

Unmitigated Construction Off-Site

	ROG	NOx	CO	SO2	Fugitive PM10	Exhaust PM10	PM10 Total	Fugitive PM2.5	Exhaust PM2.5	PM2.5 Total	Bio- CO2	NBio- CO2	Total CO2	CH4	N2O	CO2e
Category	tons/yr										MT/yr					
Hauling	4.0000e-005	1.4200e-003	3.2000e-004	1.0000e-005	1.7000e-004	0.0000	1.7000e-004	5.0000e-005	0.0000	5.0000e-005	0.0000	0.7053	0.7053	3.0000e-005	0.0000	0.7062
Vendor	0.0000	0.0000	0.0000	0.0000	0.0000	0.0000	0.0000	0.0000	0.0000	0.0000	0.0000	0.0000	0.0000	0.0000	0.0000	0.0000
Worker	4.6000e-004	3.1000e-004	3.3500e-003	1.0000e-005	1.3200e-003	1.0000e-005	1.3200e-003	3.5000e-004	1.0000e-005	3.6000e-004	0.0000	0.9802	0.9802	2.0000e-005	0.0000	0.9807
Total	5.0000e-004	1.7300e-003	3.6700e-003	2.0000e-005	1.4900e-003	1.0000e-005	1.4900e-003	4.0000e-004	1.0000e-005	4.1000e-004	0.0000	1.6855	1.6855	5.0000e-005	0.0000	1.6869

Mitigated Construction On-Site

	ROG	NOx	CO	SO2	Fugitive PM10	Exhaust PM10	PM10 Total	Fugitive PM2.5	Exhaust PM2.5	PM2.5 Total	Bio- CO2	NBio- CO2	Total CO2	CH4	N2O	CO2e
Category	tons/yr										MT/yr					
Fugitive Dust					8.0000e-005	0.0000	8.0000e-005	1.0000e-005	0.0000	1.0000e-005	0.0000	0.0000	0.0000	0.0000	0.0000	0.0000
Off-Road	1.3000e-003	0.0112	0.0343	5.0000e-005		2.3000e-004	2.3000e-004		2.3000e-004	2.3000e-004	0.0000	4.4153	4.4153	8.1000e-004	0.0000	4.4357
Total	1.3000e-003	0.0112	0.0343	5.0000e-005	8.0000e-005	2.3000e-004	3.1000e-004	1.0000e-005	2.3000e-004	2.4000e-004	0.0000	4.4153	4.4153	8.1000e-004	0.0000	4.4357

Alta Cuvee Bus Bay - San Bernardino-South Coast County, Annual

3.2 Demolition - 2024

Mitigated Construction Off-Site

	ROG	NOx	CO	SO2	Fugitive PM10	Exhaust PM10	PM10 Total	Fugitive PM2.5	Exhaust PM2.5	PM2.5 Total	Bio- CO2	NBio- CO2	Total CO2	CH4	N2O	CO2e
Category	tons/yr										MT/yr					
Hauling	4.0000e-005	1.4200e-003	3.2000e-004	1.0000e-005	1.7000e-004	0.0000	1.7000e-004	5.0000e-005	0.0000	5.0000e-005	0.0000	0.7053	0.7053	3.0000e-005	0.0000	0.7062
Vendor	0.0000	0.0000	0.0000	0.0000	0.0000	0.0000	0.0000	0.0000	0.0000	0.0000	0.0000	0.0000	0.0000	0.0000	0.0000	0.0000
Worker	4.6000e-004	3.1000e-004	3.3500e-003	1.0000e-005	1.3200e-003	1.0000e-005	1.3200e-003	3.5000e-004	1.0000e-005	3.6000e-004	0.0000	0.9802	0.9802	2.0000e-005	0.0000	0.9807
Total	5.0000e-004	1.7300e-003	3.6700e-003	2.0000e-005	1.4900e-003	1.0000e-005	1.4900e-003	4.0000e-004	1.0000e-005	4.1000e-004	0.0000	1.6855	1.6855	5.0000e-005	0.0000	1.6869

3.3 Site Preparation - 2024

Unmitigated Construction On-Site

	ROG	NOx	CO	SO2	Fugitive PM10	Exhaust PM10	PM10 Total	Fugitive PM2.5	Exhaust PM2.5	PM2.5 Total	Bio- CO2	NBio- CO2	Total CO2	CH4	N2O	CO2e
Category	tons/yr										MT/yr					
Fugitive Dust					9.0300e-003	0.0000	9.0300e-003	4.9700e-003	0.0000	4.9700e-003	0.0000	0.0000	0.0000	0.0000	0.0000	0.0000
Off-Road	4.5200e-003	0.0413	0.0458	8.0000e-005		1.7100e-003	1.7100e-003		1.6100e-003	1.6100e-003	0.0000	6.4881	6.4881	1.8200e-003	0.0000	6.5336
Total	4.5200e-003	0.0413	0.0458	8.0000e-005	9.0300e-003	1.7100e-003	0.0107	4.9700e-003	1.6100e-003	6.5800e-003	0.0000	6.4881	6.4881	1.8200e-003	0.0000	6.5336

Alta Cuvee Bus Bay - San Bernardino-South Coast County, Annual

3.3 Site Preparation - 2024

Unmitigated Construction Off-Site

	ROG	NOx	CO	SO2	Fugitive PM10	Exhaust PM10	PM10 Total	Fugitive PM2.5	Exhaust PM2.5	PM2.5 Total	Bio- CO2	NBio- CO2	Total CO2	CH4	N2O	CO2e
Category	tons/yr										MT/yr					
Hauling	0.0000	0.0000	0.0000	0.0000	0.0000	0.0000	0.0000	0.0000	0.0000	0.0000	0.0000	0.0000	0.0000	0.0000	0.0000	0.0000
Vendor	0.0000	0.0000	0.0000	0.0000	0.0000	0.0000	0.0000	0.0000	0.0000	0.0000	0.0000	0.0000	0.0000	0.0000	0.0000	0.0000
Worker	9.1000e-004	6.1000e-004	6.6900e-003	2.0000e-005	2.6300e-003	2.0000e-005	2.6500e-003	7.0000e-004	1.0000e-005	7.1000e-004	0.0000	1.9603	1.9603	4.0000e-005	0.0000	1.9614
Total	9.1000e-004	6.1000e-004	6.6900e-003	2.0000e-005	2.6300e-003	2.0000e-005	2.6500e-003	7.0000e-004	1.0000e-005	7.1000e-004	0.0000	1.9603	1.9603	4.0000e-005	0.0000	1.9614

Mitigated Construction On-Site

	ROG	NOx	CO	SO2	Fugitive PM10	Exhaust PM10	PM10 Total	Fugitive PM2.5	Exhaust PM2.5	PM2.5 Total	Bio- CO2	NBio- CO2	Total CO2	CH4	N2O	CO2e
Category	tons/yr										MT/yr					
Fugitive Dust					3.5200e-003	0.0000	3.5200e-003	1.9400e-003	0.0000	1.9400e-003	0.0000	0.0000	0.0000	0.0000	0.0000	0.0000
Off-Road	2.5700e-003	0.0228	0.0494	8.0000e-005		4.9000e-004	4.9000e-004		4.9000e-004	4.9000e-004	0.0000	6.4881	6.4881	1.8200e-003	0.0000	6.5336
Total	2.5700e-003	0.0228	0.0494	8.0000e-005	3.5200e-003	4.9000e-004	4.0100e-003	1.9400e-003	4.9000e-004	2.4300e-003	0.0000	6.4881	6.4881	1.8200e-003	0.0000	6.5336

Alta Cuvee Bus Bay - San Bernardino-South Coast County, Annual

3.3 Site Preparation - 2024

Mitigated Construction Off-Site

	ROG	NOx	CO	SO2	Fugitive PM10	Exhaust PM10	PM10 Total	Fugitive PM2.5	Exhaust PM2.5	PM2.5 Total	Bio- CO2	NBio- CO2	Total CO2	CH4	N2O	CO2e
Category	tons/yr										MT/yr					
Hauling	0.0000	0.0000	0.0000	0.0000	0.0000	0.0000	0.0000	0.0000	0.0000	0.0000	0.0000	0.0000	0.0000	0.0000	0.0000	0.0000
Vendor	0.0000	0.0000	0.0000	0.0000	0.0000	0.0000	0.0000	0.0000	0.0000	0.0000	0.0000	0.0000	0.0000	0.0000	0.0000	0.0000
Worker	9.1000e-004	6.1000e-004	6.6900e-003	2.0000e-005	2.6300e-003	2.0000e-005	2.6500e-003	7.0000e-004	1.0000e-005	7.1000e-004	0.0000	1.9603	1.9603	4.0000e-005	0.0000	1.9614
Total	9.1000e-004	6.1000e-004	6.6900e-003	2.0000e-005	2.6300e-003	2.0000e-005	2.6500e-003	7.0000e-004	1.0000e-005	7.1000e-004	0.0000	1.9603	1.9603	4.0000e-005	0.0000	1.9614

3.4 Building Construction - 2024

Unmitigated Construction On-Site

	ROG	NOx	CO	SO2	Fugitive PM10	Exhaust PM10	PM10 Total	Fugitive PM2.5	Exhaust PM2.5	PM2.5 Total	Bio- CO2	NBio- CO2	Total CO2	CH4	N2O	CO2e
Category	tons/yr										MT/yr					
Off-Road	3.9900e-003	0.0367	0.0590	9.0000e-005		1.5500e-003	1.5500e-003		1.4400e-003	1.4400e-003	0.0000	7.7934	7.7934	2.3700e-003	0.0000	7.8528
Total	3.9900e-003	0.0367	0.0590	9.0000e-005		1.5500e-003	1.5500e-003		1.4400e-003	1.4400e-003	0.0000	7.7934	7.7934	2.3700e-003	0.0000	7.8528

Alta Cuvee Bus Bay - San Bernardino-South Coast County, Annual

3.4 Building Construction - 2024

Unmitigated Construction Off-Site

	ROG	NOx	CO	SO2	Fugitive PM10	Exhaust PM10	PM10 Total	Fugitive PM2.5	Exhaust PM2.5	PM2.5 Total	Bio- CO2	NBio- CO2	Total CO2	CH4	N2O	CO2e
Category	tons/yr										MT/yr					
Hauling	0.0000	0.0000	0.0000	0.0000	0.0000	0.0000	0.0000	0.0000	0.0000	0.0000	0.0000	0.0000	0.0000	0.0000	0.0000	0.0000
Vendor	6.0000e-005	2.1400e-003	4.6000e-004	1.0000e-005	1.9000e-004	0.0000	1.9000e-004	5.0000e-005	0.0000	6.0000e-005	0.0000	0.7341	0.7341	4.0000e-005	0.0000	0.7351
Worker	5.7000e-004	3.8000e-004	4.1800e-003	1.0000e-005	1.6400e-003	1.0000e-005	1.6500e-003	4.4000e-004	1.0000e-005	4.5000e-004	0.0000	1.2252	1.2252	3.0000e-005	0.0000	1.2259
Total	6.3000e-004	2.5200e-003	4.6400e-003	2.0000e-005	1.8300e-003	1.0000e-005	1.8400e-003	4.9000e-004	1.0000e-005	5.1000e-004	0.0000	1.9593	1.9593	7.0000e-005	0.0000	1.9610

Mitigated Construction On-Site

	ROG	NOx	CO	SO2	Fugitive PM10	Exhaust PM10	PM10 Total	Fugitive PM2.5	Exhaust PM2.5	PM2.5 Total	Bio- CO2	NBio- CO2	Total CO2	CH4	N2O	CO2e
Category	tons/yr										MT/yr					
Off-Road	2.0000e-003	0.0156	0.0659	9.0000e-005		3.4000e-004	3.4000e-004		3.4000e-004	3.4000e-004	0.0000	7.7934	7.7934	2.3700e-003	0.0000	7.8527
Total	2.0000e-003	0.0156	0.0659	9.0000e-005		3.4000e-004	3.4000e-004		3.4000e-004	3.4000e-004	0.0000	7.7934	7.7934	2.3700e-003	0.0000	7.8527

Alta Cuvee Bus Bay - San Bernardino-South Coast County, Annual

3.4 Building Construction - 2024

Mitigated Construction Off-Site

	ROG	NOx	CO	SO2	Fugitive PM10	Exhaust PM10	PM10 Total	Fugitive PM2.5	Exhaust PM2.5	PM2.5 Total	Bio- CO2	NBio- CO2	Total CO2	CH4	N2O	CO2e
Category	tons/yr										MT/yr					
Hauling	0.0000	0.0000	0.0000	0.0000	0.0000	0.0000	0.0000	0.0000	0.0000	0.0000	0.0000	0.0000	0.0000	0.0000	0.0000	0.0000
Vendor	6.0000e-005	2.1400e-003	4.6000e-004	1.0000e-005	1.9000e-004	0.0000	1.9000e-004	5.0000e-005	0.0000	6.0000e-005	0.0000	0.7341	0.7341	4.0000e-005	0.0000	0.7351
Worker	5.7000e-004	3.8000e-004	4.1800e-003	1.0000e-005	1.6400e-003	1.0000e-005	1.6500e-003	4.4000e-004	1.0000e-005	4.5000e-004	0.0000	1.2252	1.2252	3.0000e-005	0.0000	1.2259
Total	6.3000e-004	2.5200e-003	4.6400e-003	2.0000e-005	1.8300e-003	1.0000e-005	1.8400e-003	4.9000e-004	1.0000e-005	5.1000e-004	0.0000	1.9593	1.9593	7.0000e-005	0.0000	1.9610

3.5 Paving - 2024

Unmitigated Construction On-Site

	ROG	NOx	CO	SO2	Fugitive PM10	Exhaust PM10	PM10 Total	Fugitive PM2.5	Exhaust PM2.5	PM2.5 Total	Bio- CO2	NBio- CO2	Total CO2	CH4	N2O	CO2e
Category	tons/yr										MT/yr					
Off-Road	9.3000e-004	8.0900e-003	0.0108	2.0000e-005		3.7000e-004	3.7000e-004		3.5000e-004	3.5000e-004	0.0000	1.4412	1.4412	4.1000e-004	0.0000	1.4515
Paving	3.0000e-005					0.0000	0.0000		0.0000	0.0000	0.0000	0.0000	0.0000	0.0000	0.0000	0.0000
Total	9.6000e-004	8.0900e-003	0.0108	2.0000e-005		3.7000e-004	3.7000e-004		3.5000e-004	3.5000e-004	0.0000	1.4412	1.4412	4.1000e-004	0.0000	1.4515

Alta Cuvee Bus Bay - San Bernardino-South Coast County, Annual

3.5 Paving - 2024

Unmitigated Construction Off-Site

	ROG	NOx	CO	SO2	Fugitive PM10	Exhaust PM10	PM10 Total	Fugitive PM2.5	Exhaust PM2.5	PM2.5 Total	Bio- CO2	NBio- CO2	Total CO2	CH4	N2O	CO2e
Category	tons/yr										MT/yr					
Hauling	0.0000	0.0000	0.0000	0.0000	0.0000	0.0000	0.0000	0.0000	0.0000	0.0000	0.0000	0.0000	0.0000	0.0000	0.0000	0.0000
Vendor	1.0000e-005	2.1000e-004	5.0000e-005	0.0000	2.0000e-005	0.0000	2.0000e-005	1.0000e-005	0.0000	1.0000e-005	0.0000	0.0734	0.0734	0.0000	0.0000	0.0735
Worker	1.1000e-004	8.0000e-005	8.4000e-004	0.0000	3.3000e-004	0.0000	3.3000e-004	9.0000e-005	0.0000	9.0000e-005	0.0000	0.2450	0.2450	1.0000e-005	0.0000	0.2452
Total	1.2000e-004	2.9000e-004	8.9000e-004	0.0000	3.5000e-004	0.0000	3.5000e-004	1.0000e-004	0.0000	1.0000e-004	0.0000	0.3185	0.3185	1.0000e-005	0.0000	0.3187

Mitigated Construction On-Site

	ROG	NOx	CO	SO2	Fugitive PM10	Exhaust PM10	PM10 Total	Fugitive PM2.5	Exhaust PM2.5	PM2.5 Total	Bio- CO2	NBio- CO2	Total CO2	CH4	N2O	CO2e
Category	tons/yr										MT/yr					
Off-Road	4.7000e-004	2.6300e-003	0.0120	2.0000e-005		1.0000e-004	1.0000e-004		1.0000e-004	1.0000e-004	0.0000	1.4412	1.4412	4.1000e-004	0.0000	1.4515
Paving	3.0000e-005					0.0000	0.0000		0.0000	0.0000	0.0000	0.0000	0.0000	0.0000	0.0000	0.0000
Total	5.0000e-004	2.6300e-003	0.0120	2.0000e-005		1.0000e-004	1.0000e-004		1.0000e-004	1.0000e-004	0.0000	1.4412	1.4412	4.1000e-004	0.0000	1.4515

Alta Cuvee Bus Bay - San Bernardino-South Coast County, Annual

3.5 Paving - 2024

Mitigated Construction Off-Site

	ROG	NOx	CO	SO2	Fugitive PM10	Exhaust PM10	PM10 Total	Fugitive PM2.5	Exhaust PM2.5	PM2.5 Total	Bio- CO2	NBio- CO2	Total CO2	CH4	N2O	CO2e
Category	tons/yr										MT/yr					
Hauling	0.0000	0.0000	0.0000	0.0000	0.0000	0.0000	0.0000	0.0000	0.0000	0.0000	0.0000	0.0000	0.0000	0.0000	0.0000	0.0000
Vendor	1.0000e-005	2.1000e-004	5.0000e-005	0.0000	2.0000e-005	0.0000	2.0000e-005	1.0000e-005	0.0000	1.0000e-005	0.0000	0.0734	0.0734	0.0000	0.0000	0.0735
Worker	1.1000e-004	8.0000e-005	8.4000e-004	0.0000	3.3000e-004	0.0000	3.3000e-004	9.0000e-005	0.0000	9.0000e-005	0.0000	0.2450	0.2450	1.0000e-005	0.0000	0.2452
Total	1.2000e-004	2.9000e-004	8.9000e-004	0.0000	3.5000e-004	0.0000	3.5000e-004	1.0000e-004	0.0000	1.0000e-004	0.0000	0.3185	0.3185	1.0000e-005	0.0000	0.3187

4.0 Operational Detail - Mobile

4.1 Mitigation Measures Mobile

Alta Cuvee Bus Bay - San Bernardino-South Coast County, Annual

	ROG	NOx	CO	SO2	Fugitive PM10	Exhaust PM10	PM10 Total	Fugitive PM2.5	Exhaust PM2.5	PM2.5 Total	Bio- CO2	NBio- CO2	Total CO2	CH4	N2O	CO2e
Category	tons/yr										MT/yr					
Mitigated	0.0000	0.0000	0.0000	0.0000	0.0000	0.0000	0.0000	0.0000	0.0000	0.0000	0.0000	0.0000	0.0000	0.0000	0.0000	0.0000
Unmitigated	0.0000	0.0000	0.0000	0.0000	0.0000	0.0000	0.0000	0.0000	0.0000	0.0000	0.0000	0.0000	0.0000	0.0000	0.0000	0.0000

4.2 Trip Summary Information

Land Use	Average Daily Trip Rate			Unmitigated	Mitigated
	Weekday	Saturday	Sunday	Annual VMT	Annual VMT
Other Asphalt Surfaces	0.00	0.00	0.00		
Total	0.00	0.00	0.00		

4.3 Trip Type Information

Land Use	Miles			Trip %			Trip Purpose %		
	H-W or C-W	H-S or C-C	H-O or C-NW	H-W or C-W	H-S or C-C	H-O or C-NW	Primary	Diverted	Pass-by
Other Asphalt Surfaces	16.60	8.40	6.90	0.00	0.00	0.00	0	0	0

4.4 Fleet Mix

Land Use	LDA	LDT1	LDT2	MDV	LHD1	LHD2	MHD	HHD	OBUS	UBUS	MCY	SBUS	MH
Other Asphalt Surfaces	0.558745	0.035303	0.181800	0.111169	0.014289	0.004794	0.018611	0.065078	0.001365	0.001491	0.005725	0.000799	0.000830

5.0 Energy Detail

Historical Energy Use: N

Alta Cuvee Bus Bay - San Bernardino-South Coast County, Annual

5.2 Energy by Land Use - Natural Gas

Mitigated

	Natural Gas Use	ROG	NOx	CO	SO2	Fugitive PM10	Exhaust PM10	PM10 Total	Fugitive PM2.5	Exhaust PM2.5	PM2.5 Total	Bio- CO2	NBio- CO2	Total CO2	CH4	N2O	CO2e
Land Use	kBTU/yr	tons/yr										MT/yr					
Other Asphalt Surfaces	0	0.0000	0.0000	0.0000	0.0000		0.0000	0.0000		0.0000	0.0000	0.0000	0.0000	0.0000	0.0000	0.0000	0.0000
Total		0.0000	0.0000	0.0000	0.0000		0.0000	0.0000		0.0000	0.0000	0.0000	0.0000	0.0000	0.0000	0.0000	0.0000

5.3 Energy by Land Use - Electricity

Unmitigated

	Electricity Use	Total CO2	CH4	N2O	CO2e
Land Use	kWh/yr	MT/yr			
Other Asphalt Surfaces	0	0.0000	0.0000	0.0000	0.0000
Total		0.0000	0.0000	0.0000	0.0000

Alta Cuvee Bus Bay - San Bernardino-South Coast County, Annual

5.3 Energy by Land Use - Electricity

Mitigated

	Electricity Use	Total CO2	CH4	N2O	CO2e
Land Use	kWh/yr	MT/yr			
Other Asphalt Surfaces	0	0.0000	0.0000	0.0000	0.0000
Total		0.0000	0.0000	0.0000	0.0000

6.0 Area Detail

6.1 Mitigation Measures Area

	ROG	NOx	CO	SO2	Fugitive PM10	Exhaust PM10	PM10 Total	Fugitive PM2.5	Exhaust PM2.5	PM2.5 Total	Bio- CO2	NBio- CO2	Total CO2	CH4	N2O	CO2e
Category	tons/yr										MT/yr					
Mitigated	8.0000e-005	0.0000	1.0000e-005	0.0000		0.0000	0.0000		0.0000	0.0000	0.0000	2.0000e-005	2.0000e-005	0.0000	0.0000	3.0000e-005
Unmitigated	8.0000e-005	0.0000	1.0000e-005	0.0000		0.0000	0.0000		0.0000	0.0000	0.0000	2.0000e-005	2.0000e-005	0.0000	0.0000	3.0000e-005

Alta Cuvee Bus Bay - San Bernardino-South Coast County, Annual

6.2 Area by SubCategory

Unmitigated

	ROG	NOx	CO	SO2	Fugitive PM10	Exhaust PM10	PM10 Total	Fugitive PM2.5	Exhaust PM2.5	PM2.5 Total	Bio- CO2	NBio- CO2	Total CO2	CH4	N2O	CO2e
SubCategory	tons/yr										MT/yr					
Architectural Coating	1.0000e-005					0.0000	0.0000		0.0000	0.0000	0.0000	0.0000	0.0000	0.0000	0.0000	0.0000
Consumer Products	6.0000e-005					0.0000	0.0000		0.0000	0.0000	0.0000	0.0000	0.0000	0.0000	0.0000	0.0000
Landscaping	0.0000	0.0000	1.0000e-005	0.0000		0.0000	0.0000		0.0000	0.0000	0.0000	2.0000e-005	2.0000e-005	0.0000	0.0000	3.0000e-005
Total	7.0000e-005	0.0000	1.0000e-005	0.0000		0.0000	0.0000		0.0000	0.0000	0.0000	2.0000e-005	2.0000e-005	0.0000	0.0000	3.0000e-005

Mitigated

	ROG	NOx	CO	SO2	Fugitive PM10	Exhaust PM10	PM10 Total	Fugitive PM2.5	Exhaust PM2.5	PM2.5 Total	Bio- CO2	NBio- CO2	Total CO2	CH4	N2O	CO2e
SubCategory	tons/yr										MT/yr					
Architectural Coating	1.0000e-005					0.0000	0.0000		0.0000	0.0000	0.0000	0.0000	0.0000	0.0000	0.0000	0.0000
Consumer Products	6.0000e-005					0.0000	0.0000		0.0000	0.0000	0.0000	0.0000	0.0000	0.0000	0.0000	0.0000
Landscaping	0.0000	0.0000	1.0000e-005	0.0000		0.0000	0.0000		0.0000	0.0000	0.0000	2.0000e-005	2.0000e-005	0.0000	0.0000	3.0000e-005
Total	7.0000e-005	0.0000	1.0000e-005	0.0000		0.0000	0.0000		0.0000	0.0000	0.0000	2.0000e-005	2.0000e-005	0.0000	0.0000	3.0000e-005

7.0 Water Detail

Alta Cuvee Bus Bay - San Bernardino-South Coast County, Annual

7.1 Mitigation Measures Water

	Total CO2	CH4	N2O	CO2e
Category	MT/yr			
Mitigated	0.0000	0.0000	0.0000	0.0000
Unmitigated	0.0000	0.0000	0.0000	0.0000

7.2 Water by Land Use

Unmitigated

	Indoor/Outdoor Use	Total CO2	CH4	N2O	CO2e
Land Use	Mgal	MT/yr			
Other Asphalt Surfaces	0 / 0	0.0000	0.0000	0.0000	0.0000
Total		0.0000	0.0000	0.0000	0.0000

Alta Cuvee Bus Bay - San Bernardino-South Coast County, Annual

7.2 Water by Land Use

Mitigated

	Indoor/Outdoor Use	Total CO2	CH4	N2O	CO2e
Land Use	Mgal	MT/yr			
Other Asphalt Surfaces	0 / 0	0.0000	0.0000	0.0000	0.0000
Total		0.0000	0.0000	0.0000	0.0000

8.0 Waste Detail

8.1 Mitigation Measures Waste

Category/Year

	Total CO2	CH4	N2O	CO2e
	MT/yr			
Mitigated	0.0000	0.0000	0.0000	0.0000
Unmitigated	0.0000	0.0000	0.0000	0.0000

Alta Cuvee Bus Bay - San Bernardino-South Coast County, Annual

8.2 Waste by Land Use

Unmitigated

	Waste Disposed	Total CO2	CH4	N2O	CO2e
Land Use	tons	MT/yr			
Other Asphalt Surfaces	0	0.0000	0.0000	0.0000	0.0000
Total		0.0000	0.0000	0.0000	0.0000

Mitigated

	Waste Disposed	Total CO2	CH4	N2O	CO2e
Land Use	tons	MT/yr			
Other Asphalt Surfaces	0	0.0000	0.0000	0.0000	0.0000
Total		0.0000	0.0000	0.0000	0.0000

9.0 Operational Offroad

Equipment Type	Number	Hours/Day	Days/Year	Horse Power	Load Factor	Fuel Type
----------------	--------	-----------	-----------	-------------	-------------	-----------

Alta Cuvee Bus Bay - San Bernardino-South Coast County, Annual

10.0 Stationary Equipment

Fire Pumps and Emergency Generators

Equipment Type	Number	Hours/Day	Hours/Year	Horse Power	Load Factor	Fuel Type
----------------	--------	-----------	------------	-------------	-------------	-----------

Boilers

Equipment Type	Number	Heat Input/Day	Heat Input/Year	Boiler Rating	Fuel Type
----------------	--------	----------------	-----------------	---------------	-----------

User Defined Equipment

Equipment Type	Number
----------------	--------

11.0 Vegetation
