

Date: October 1, 2021

To: Responsible and Trustee Agencies, Interested Parties, and Organizations

**Subject: NOTICE OF AVAILABILITY AND INTENT TO ADOPT A PROPOSED
MITIGATED NEGATIVE DECLARATION FOR THE GEORGIANA
SLOUGH SALMONID MIGRATORY BARRIER PROJECT**

The California Department of Water Resources (DWR) has directed the preparation of an Initial Study (IS) and intends to adopt the proposed Mitigated Negative Declaration (MND) for the Georgiana Slough Salmonid Migratory Barrier (GSSMB) Project (proposed project) in compliance with the California Environmental Quality Act (CEQA) and State CEQA Guidelines.

Project Title: Georgiana Slough Salmonid Migratory Barrier

Lead Agency: DWR

Project Location: The GSSMB project site is situated along the Sacramento River at its junction with Georgiana Slough in the northern Sacramento River–San Joaquin River Delta (Delta), with staging areas at the town of Hood, the Steamboat Slough junction, the Sutter Slough junction, adjacent to the Delta Cross Channel (DCC), and at the Georgiana Slough junction (Point Ranch Property) (see **Figures 1 and 2**).

DWR would construct and operate the Bio-Acoustic Fish Fence™ (BAFF) within the construction footprint (Figure 2). DWR proposes to use the Hood, Sutter Slough, Steamboat Slough, DCC, and Georgiana Slough staging areas each year during the GSSMB. The GSSMB staging area would be the primary staging area where equipment to operate the BAFF would be located. Other staging areas would accommodate monitoring support equipment for tracking tagged fish.

Project Description: The GSSMB would involve the installation and operation of a Bio-Acoustic Fish Fence™ (BAFF) at the Georgiana Slough junction for 8 years starting in late 2022/early 2023 through 2030. The BAFF would be operated as a behavioral deterrent to prevent juvenile winter-run Chinook salmon and spring-run Chinook salmon from entering Georgiana Slough during emigration (primarily between October 1 through June 1). The GSSMB is intended to reduce impacts of the State Water Project (SWP) and Central Valley Project (CVP) operations by deterring emigrating juvenile salmonid from entering Georgiana Slough and thereafter the central and south Delta, wherein survival is lower relative to remaining in the mainstem Sacramento River. Ongoing fish tagging, releases, and tracking would monitor survival.

Environmental Review Process: DWR has directed preparation of an initial study/proposed mitigated negative declaration (IS/MND) for the proposed project in accordance with the requirements of CEQA and the State CEQA Guidelines. The IS/MND describes the proposed project and provides an assessment of the proposed project's potentially significant adverse impacts on the physical environment. It concludes that the proposed project would not have any significant adverse effects on the environment after adoption and implementation of mitigation measures.

Public Review Period: The IS/MND is being circulated for public review and comment for a review period of 32 days from release of the document to the State Clearinghouse, starting on Friday, October 1, 2021. Written comments must be submitted to and received at the following address no later than close of business (5:00 p.m.) on Monday, November 1, 2021:

Department of Water Resources
Division of Operations and Maintenance
South Delta Branch
PO Box 942836
Sacramento, CA 94236

Email: SDMS.Comment@water.ca.gov

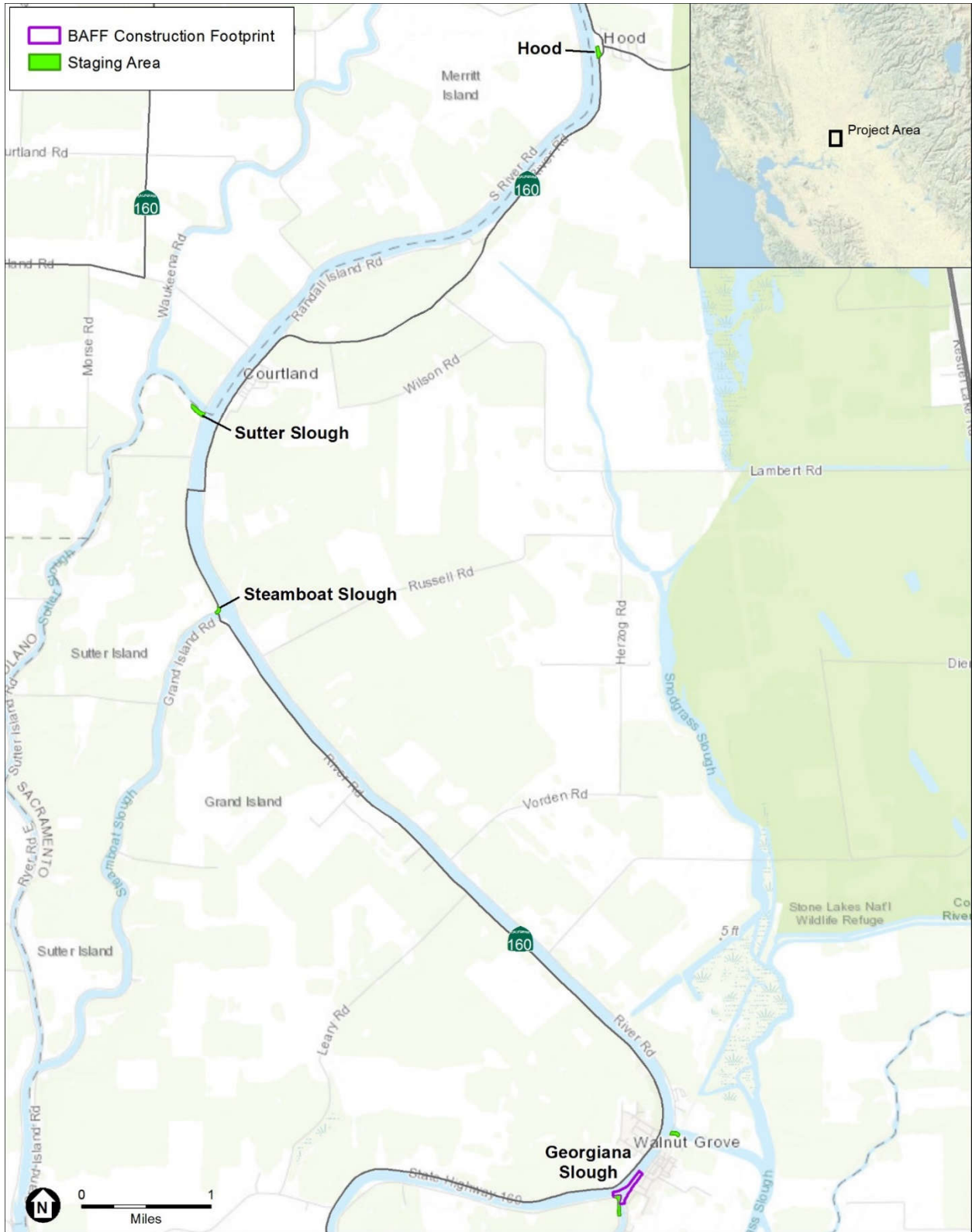
To Review or Obtain a Copy of the Environmental Document:

The IS/MND is available for review online at DWR's website:

<https://water.ca.gov/news/public-notice>

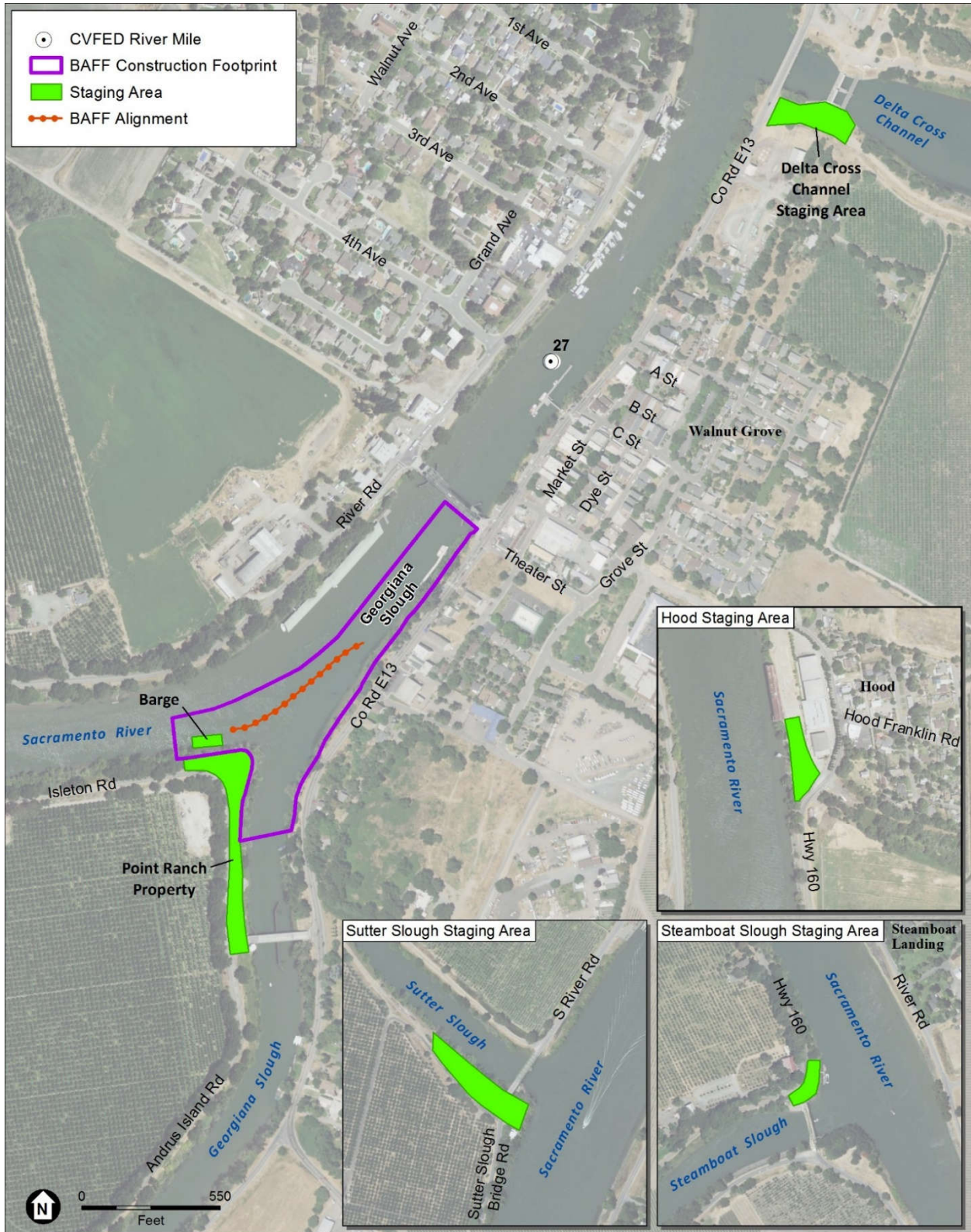
A paper copy of the IS/MND is available for review Tuesday-Saturday during normal business hours at:

Sacramento Central Public Library
828 I Street
Sacramento, CA 95814



Source: USGS Topo; AECOM adapted by ESA, 2020

Figure 1
Georgiana Slough Salmonid Migratory Barrier Overview Map



Source: USDA, 2018; AECOM adapted by ESA, 2020

Figure 2
Detailed Map—Georgiana Slough Junction and Staging Areas