

PARKING CALCS

Nº. BUILDING PROPOSED TOT.	10,556-SQ. FT.
EXISTING TOT.	30,816-SQ. FT.
PROPOSED BUILDING (A)	24,000-SQ. FT.
PROPOSED BUILDING (B)	6,500-SQ. FT.
TOT. SQ. FT. STORAGE	71,872-SQ. FT.
1/2500	(29) SPACES REQ'D.
TOT. PARKING PROVIDED	(29) SPACE PROVIDED

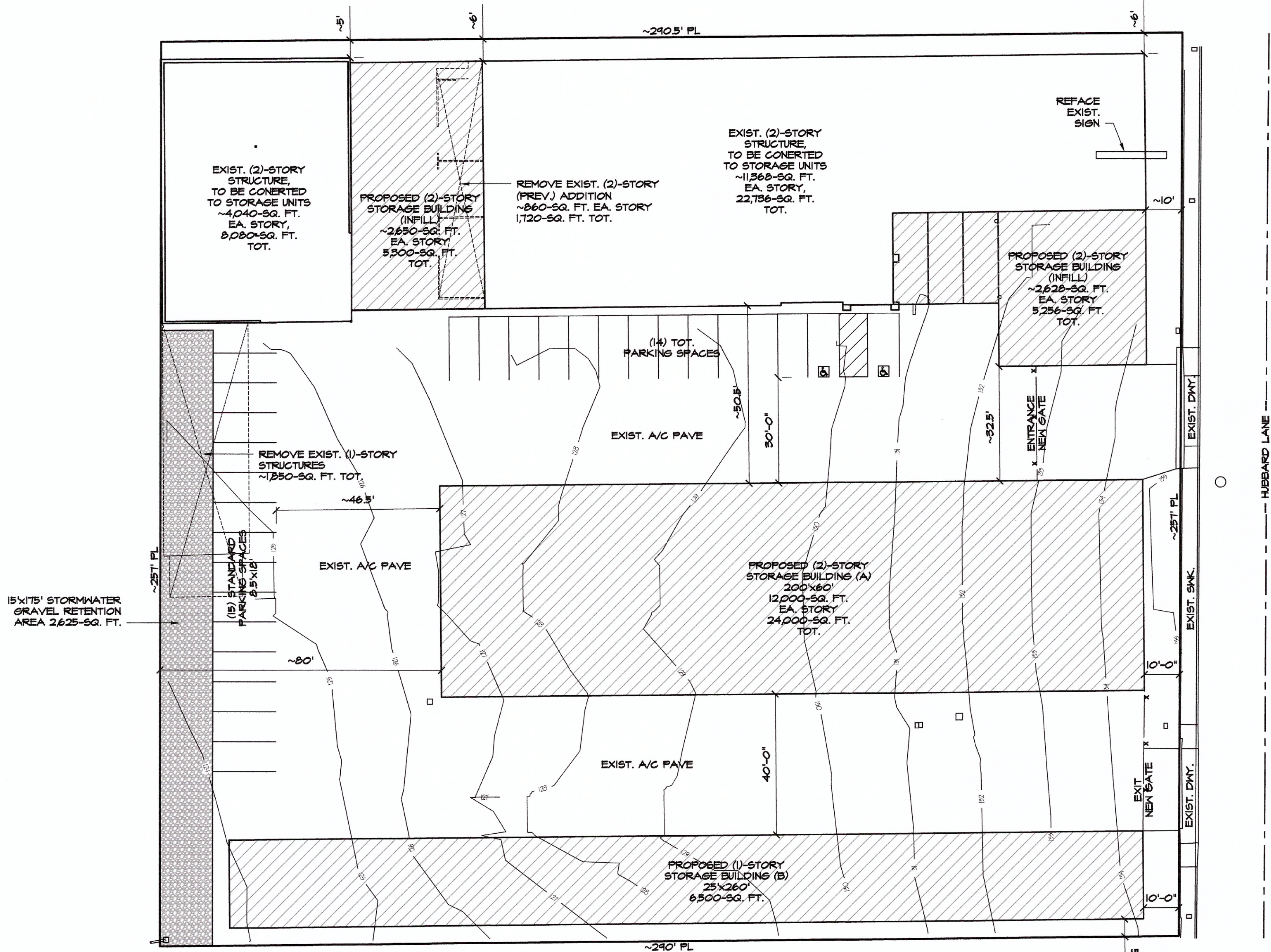
SCOPE OF WORK

PROPOSE TO CONVERT FORMER MCKENNY'S DO-IT-BEST BUILDING CENTER AND LUMBER YARD INTO RAINBOW SELF STORAGE FACILITY.

SCOPE OF WORK WILL INCLUDE BUILD OUT OF EXISTING TWO-STORY STRUCTURES, WITH INFILL /ADDITIONS, AND TWO PROPOSED DETACHED FACILITY STRUCTURES (BUILDING 'A' AND 'B').

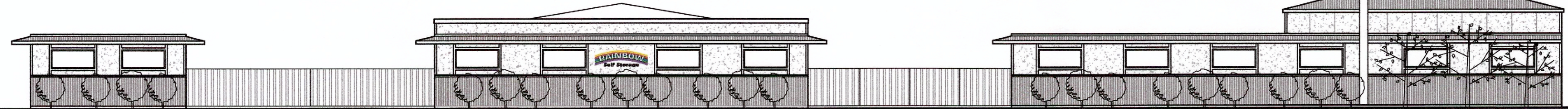
CURRENT LOT IS NEAR 100% DEVELOPED. CONSTRUCTION WILL OCCUR ON EXISTING PAVED LOT. NO INCREASE IN COVERAGE.

PROPOSE TO REMOVE ~2,625-SQ. FT. AC PAVE FOR STORMWATER GRAVEL RETENTION AREA.



SITE PLAN

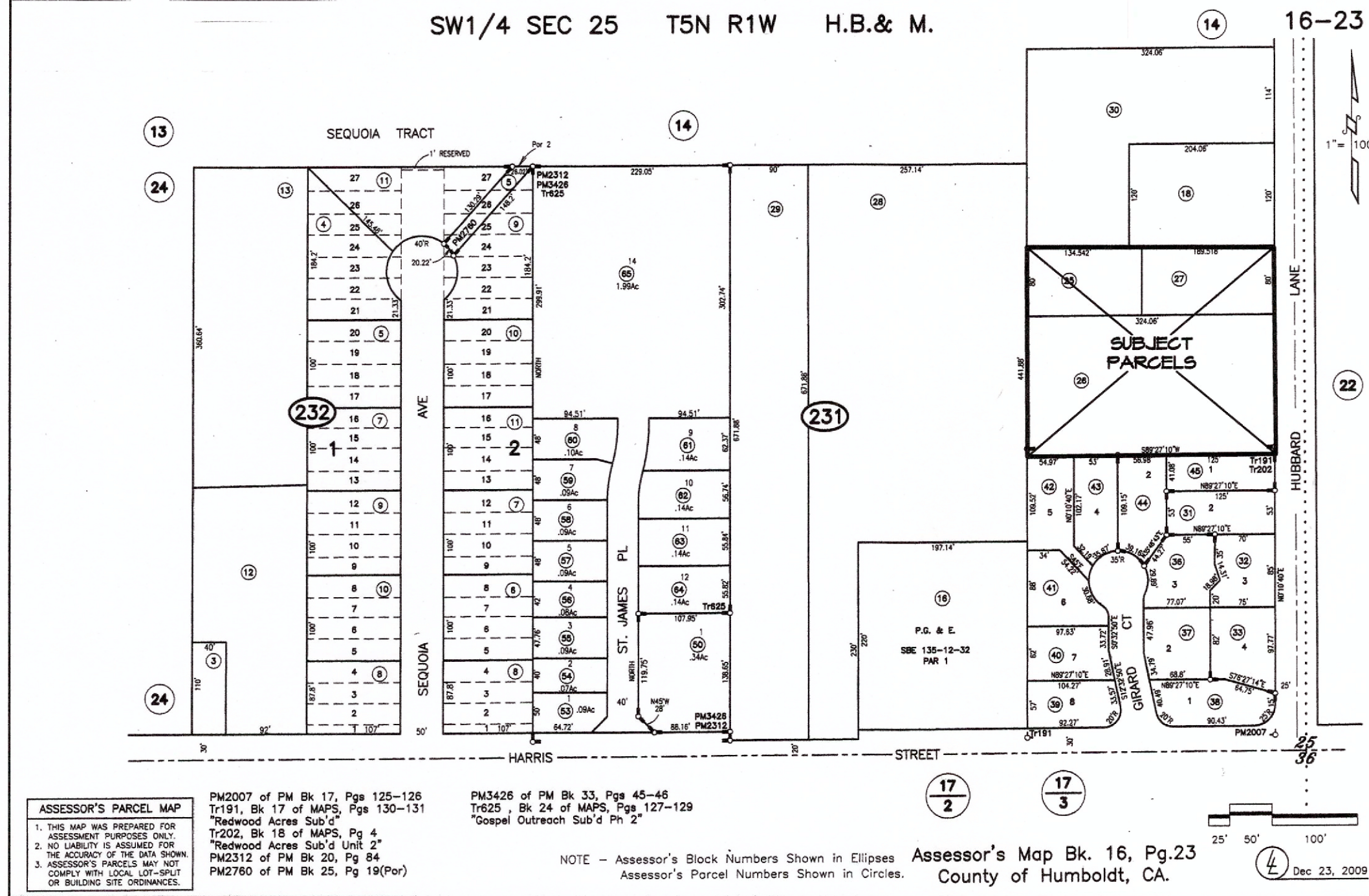
1"=20'-0"



STREETSCAPE

DO NOT SCALE

SW1/4 SEC 25 T5N R1W H.B.& M.



ASSESSOR'S PARCEL MAP
 1. THIS MAP WAS PREPARED FOR ASSESSMENT PURPOSES ONLY. NO LIABILITY IS ASSUMED FOR THE ACCURACY OF THE DATA. ASSESSOR'S PARCELS DO NOT CORRELATE WITH LOCAL JURISDICTION OR BUILDING SITE ORDINANCES.

PM2007 of PM Bk. 17, Pgs 125-126
 T191, Bk 17 of MAPS, Pgs 130-131
 Redwood Acres Sub 3
 T202, Bk 18 of MAPS, Pg 4
 Redwood Acres Sub 2 Unit 2
 PM2312 of PM Bk 20, Pg 84
 PM2760 of PM Bk 25, Pg 194(Pw)

PM3428 of PM Bk 33, Pgs 45-46
 T225, Bk 24 of MAPS, Pgs 127-129
 Special Outreach Sub 4 Pl 2

NOTE - Assessor's Block Numbers Shown in Ellipses
 Assessor's Parcel Numbers Shown in Circles

Assessor's Map Bk. 16, Pg.23
 County of Humboldt, CA.

Dec 23, 2009



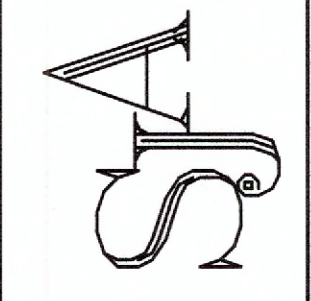
ArcGIS Web Map
 Humboldt County Planning and Building Department

Highways and Roads	Private or Unclassified	Intermittent
Principal Arterials	Major River or Stream	Subsurface
Minor Arterials	Blue Line Streams	City Boundary
Minor Collectors	Perennial 1-3	Countries
Minor Collectors	Perennial >4	Parcels
Local Roads		Parcels (no APN labels)

Printed: May 3, 2021
 Web AppBuilder 2.0 for ArcGIS
 Map Disclaimer: While every effort has been made to assure the accuracy of this information, it should be understood that it does not have the force & effect of law, rule, or regulation. Should any difference or error occur, the law will take precedence.
 Source: Source: Esri, Maxar, GeoEye, Earthstar Geographics, CNES/Airbus DS, USDA, USGS, AeroGRID, IGN, and the GIS User Community, Humboldt County GIS, Esri, HERE, Garmin, (c) OpenStreetMap contributors, and the GIS user community

REVISIONS	BY

Atkins Drafting ~ Sarah J. Atkins
 PO BOX 6572 EUREKA, CA 95502
 PH. (707) 655-8372
 Proj:saatk@atkinsdrafting.com



PROPOSED STORAGE FACILITY SITE PLAN

2800 HUBBARD LANE EUREKA, CA	APN 016-231-025, -026, -027	PH.
Date	MAY, 03, '21	
Scale	AS NOTED	
Design	SJA	
Drawn	SJA	
Job		
Sheet	1	