



1/12/2021

Albert A Webb Associates
3788 McCray Street
Riverside, CA 92506

Subject: SAN 53 – WS 202100000029 Will Serve – APN: 300-170-008 3175 - Wilson Ave

Eastern Municipal Water District (EMWD) is willing to provide water and sewer services to the subject project. The provisions of service are contingent upon the developer completing the necessary arrangements in accordance with EMWD rules and regulations. EMWD expects the developer to provide proper notification when a water demand assessment is required pursuant to Senate Bill 221 and/or 610. EMWD expects the developer to coordinate with the approving agency for the proper notification. Further arrangements for service from EMWD may also include plan check, facility construction, inspection, jurisdictional annexation, and payment of financial participation charges. The developer is advised to contact EMWD's Development Services Department early in the entitlement process to determine the necessary arrangements for service, and to receive direction on the preparation of facility Design Conditions, which is required prior to final engineering.

EMWD's ability to serve is subject to limiting conditions, such as regulatory requirements, legal issues, or conditions beyond EMWD's control.

Expiration – one year from date of issue

Thank you for your cooperation in serving our mutual customers. If you have any questions, please call me at (951) 928-3777 extension 4472.

Sincerely,

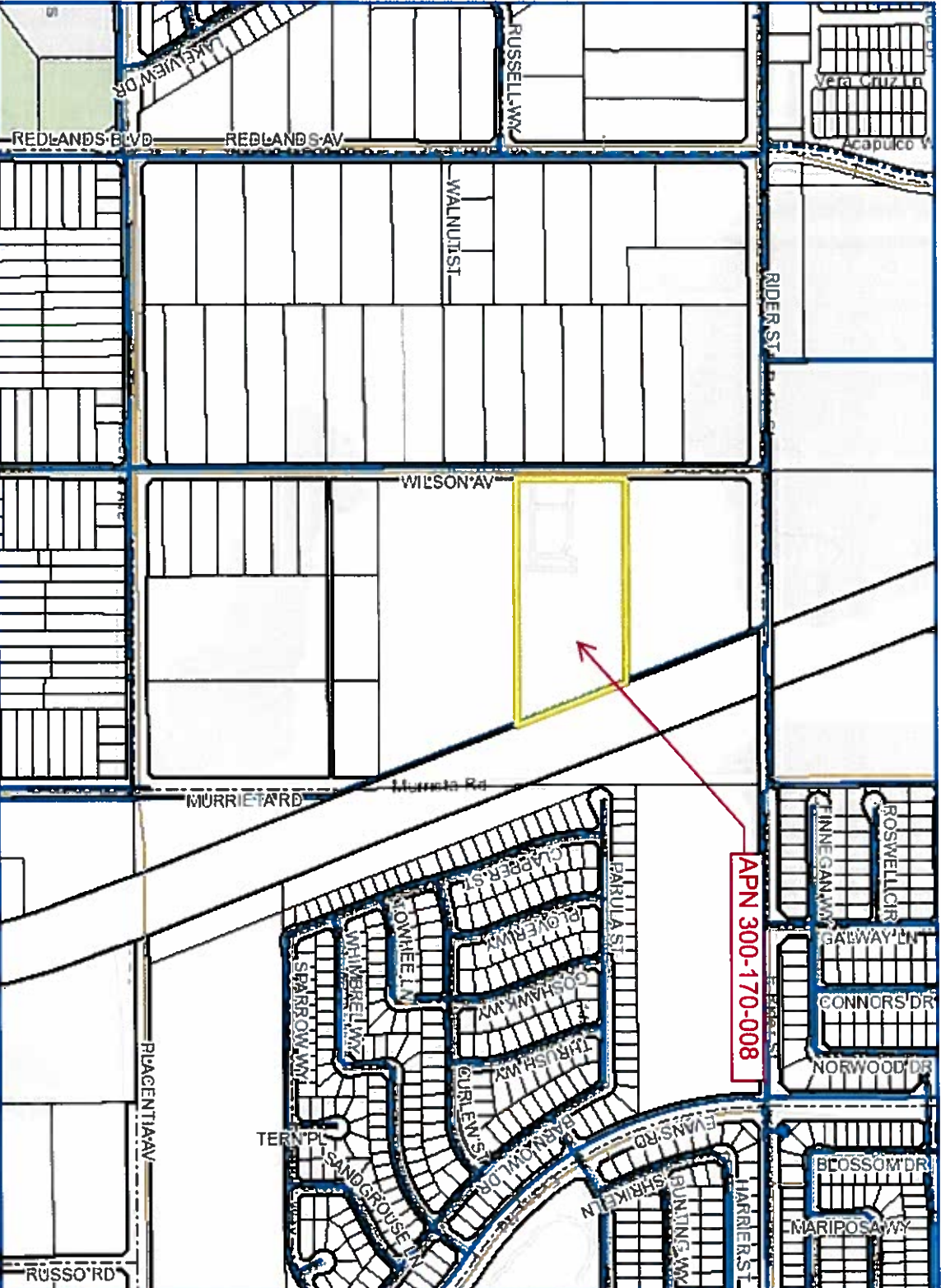
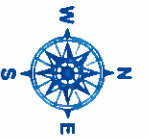
Rafael Resendiz, MS, PE
Associate Civil Engineer II
Development Services Department
Eastern Municipal Water District
RR/bd

Board of Directors
Philip E. Paule, *President* Randy A. Record, *Vice President* Jeff Armstrong Stephen J. Corona David J. Slawson

2270 Trumble Road • P.O. Box 8300 • Perris, CA 92572-8300
T 951.928.3777 • F 951.928.6177 www.emwd.org



EMWD Hydromapper



APN 300-170-008



Legend

- Wtr Main
- As Built
- - - CIP
- - - Wtr Main Abandoned
- - - Swr Interagency Tie
- - - Swr Main
- - - As Built, Collection
- - - As Built, Distribution
- - - As Built, Effluent Force
- - - As Built, Inflow Force
- - - As Built, Transmission
- - - CIP, Collection
- - - CIP, Effluent Force
- - - CIP, Inflow Force
- - - CIP, Transmission
- - - Swr Main Abandoned
- - - Swr Main Murrieta
- - - Streets
- - - Wtr Pump Station
- - - Wtr Pump Station Polygon
- - - Wtr Tank
- - - Wtr Well
- - - Wtr Treatment Plant
- - - Wtr Treatment Plant Polyg
- - - MWD Connections

Notes

GIS data shown is for informational purposes only, is subject to change without notice and may not be suitable for legal, engineering, construction, or surveying purposes. Information should be reviewed against reliable sources to ascertain its usability. Eastern Municipal Water District assumes no liability for any incorrect results, any lost profits and direct, special, indirect or consequential damages to any party, arising out of or in connection with the use of the inability to use the data hereon or the services.

SCALE 1: 7,505
 1,876 Feet
 Map Produced 01/12/2021 By EMWD Staff