

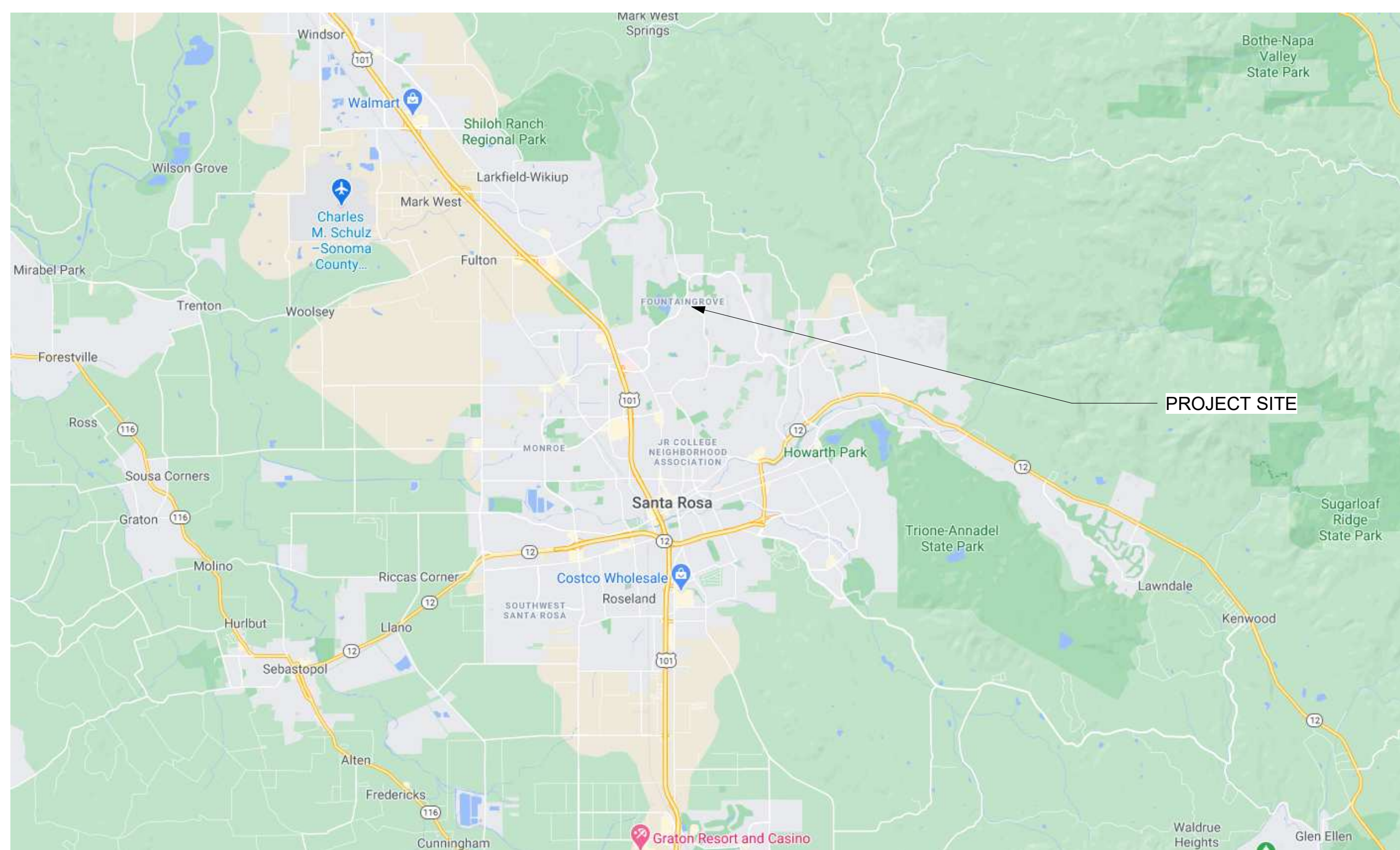


**PRELIMINARY ENGINEERING & ARCHITECTURAL DESIGN SUBMITTAL FOR
THE CITY OF SANTA ROSA FIRE STATION 5 REPLACEMENT
PORTION OF 1400 FOUNTAINGROVE PARKWAY
SANTA ROSA, CA**

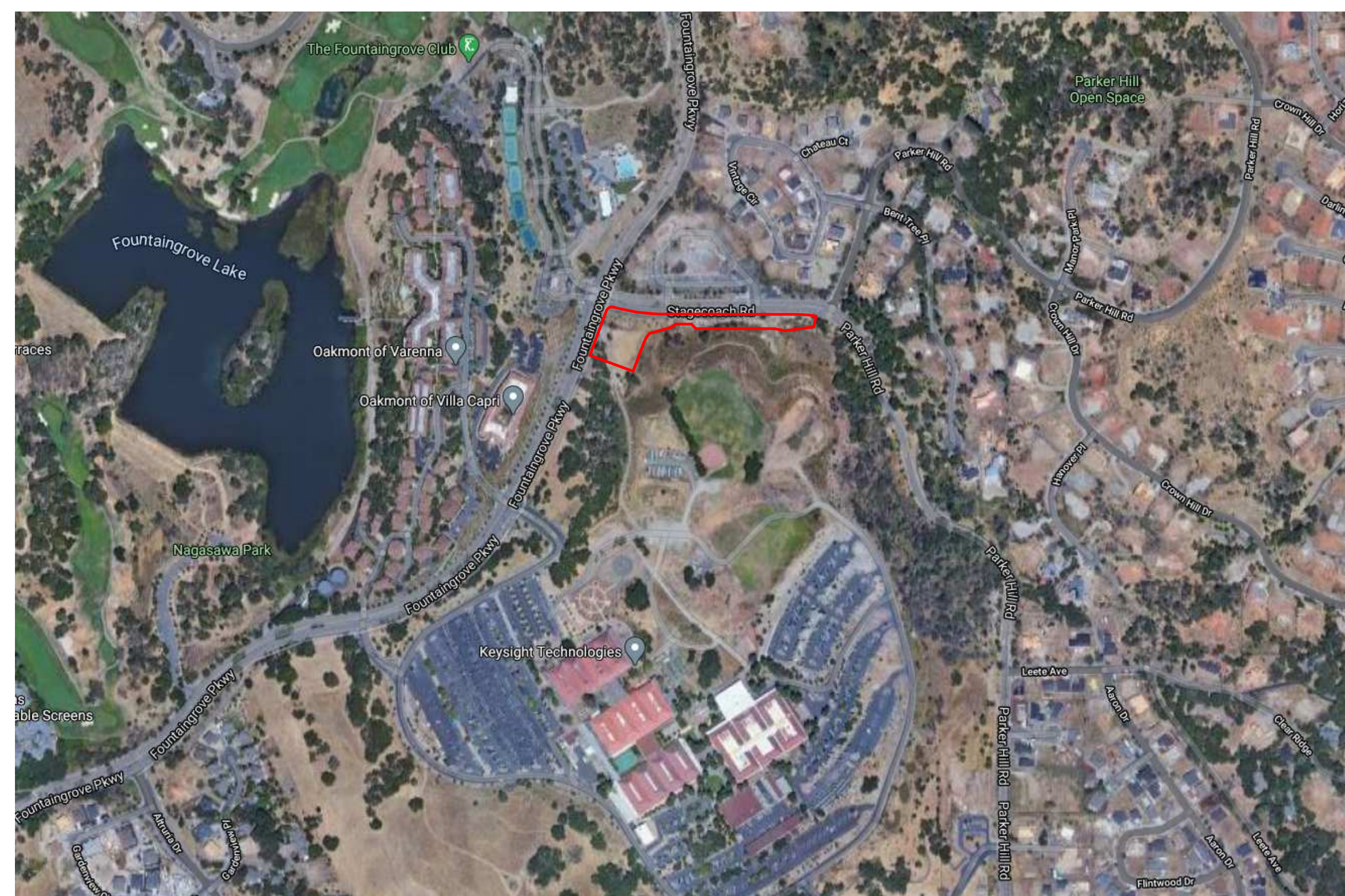
SANTA ROSA FIRE STATION 5
1400 FOUNTAINGROVE PARKWAY
SANTA ROSA, CA

REVISIONS		
No.	Description	Date

VICINITY MAP



PROJECT SITE



SHEET INDEX

01 COVER	
A0.00	COVER SHEET, VICINITY MAP AND PROJECT DIRECTORY
03 CIVIL	
C2.0	GRADING PLAN
C2.1	GRADING PLAN
C4.0	TRUCK TURNING MOVEMENTS
05 ARCH	
A1.10	OVERALL SITE PLAN
A1.11	SITE PLAN - WEST
A1.12	SITE PLAN - EAST
A2.10	FIRST FLOOR PLAN
A2.20	SECOND FLOOR PLAN
A2.30	ROOF PLAN
A3.10	EXTERIOR ELEVATIONS
A3.10a	EXTERIOR ELEVATIONS
A3.11	EXTERIOR ELEVATIONS
A3.11a	EXTERIOR ELEVATIONS
A3.12	EXTERIOR ELEVATIONS
A3.20	3D PROGRAM DIAGRAM

ARCHITECTURE & ENGINEERING DESIGN SUBMITTAL

Sheet Title
COVER SHEET, VICINITY MAP AND PROJECT DIRECTORY

PROJECT DIRECTORY

OWNER City of Santa Rosa 100 Santa Rosa Ave. Santa Rosa, CA 95404 Contact: Lisa Welsh	ARCHITECT RossDrulisCusenbery Architecture 18294 Highway 12 Sonoma, CA 95476 Contact: Mark Zall	GEOTECHNICAL & ENVIRONMENTAL SERVICES Ninyo & Moore 2020 Challenger Drive, Suite 103 Alameda, CA 94501 Contact: Bryan Fong	CIVIL ENGINEER BKF Engineers 200 4th Street, Suite 300 Santa Rosa, CA 95401 Contact: Becky Dower	BIOLOGICAL RESOURCES MIG 800 Hearst Ave. Berkeley, CA 94710 Contact: Ray Pendro	CULTURAL RESOURCES Tom Origer & Associates P.O. Box 1531 Rohnert Park, CA 95927 Contact: Taylor Alshuth	TRANSPORTATION W-Trans 490 Mendocino Ave., Suite 201 Santa Rosa, CA 95401 Contact: Dalene Whitlock
--	--	---	---	--	--	---

APPROVALS

NAME # 1 TITLE	Date
NAME # 1 TITLE	Date
NAME # 1 TITLE	Date

Drawn By Author Checked By Checker

Scale:
As Indicated
Date:
16 FEBRUARY 2021
Project No. Project Number

A0.00

Drawing No.

Preliminary Design. Not For Construction Purposes.

If this drawing is not 30" x 42", it is a reduced print - scale accordingly. All rights reserved. Material may not be reproduced in any form without permission from RossDrulisCusenbery Architecture, Inc.

ABBREVIATIONS

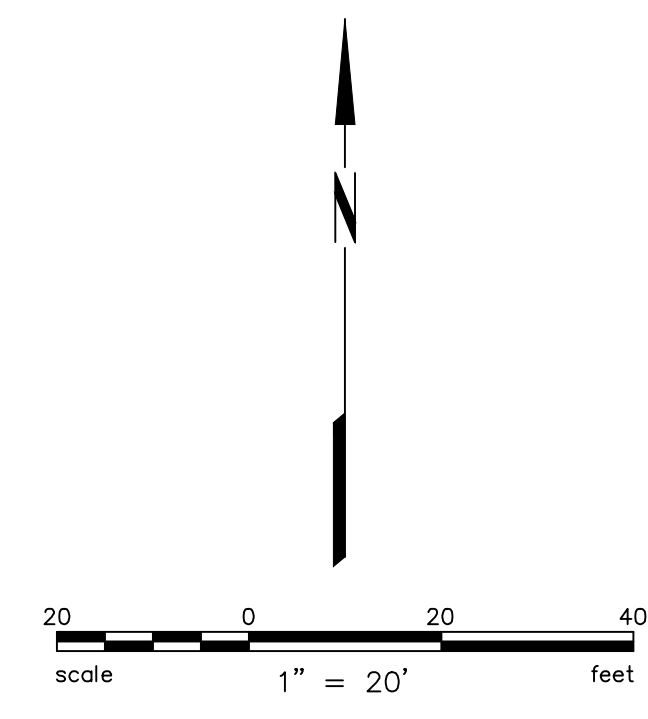
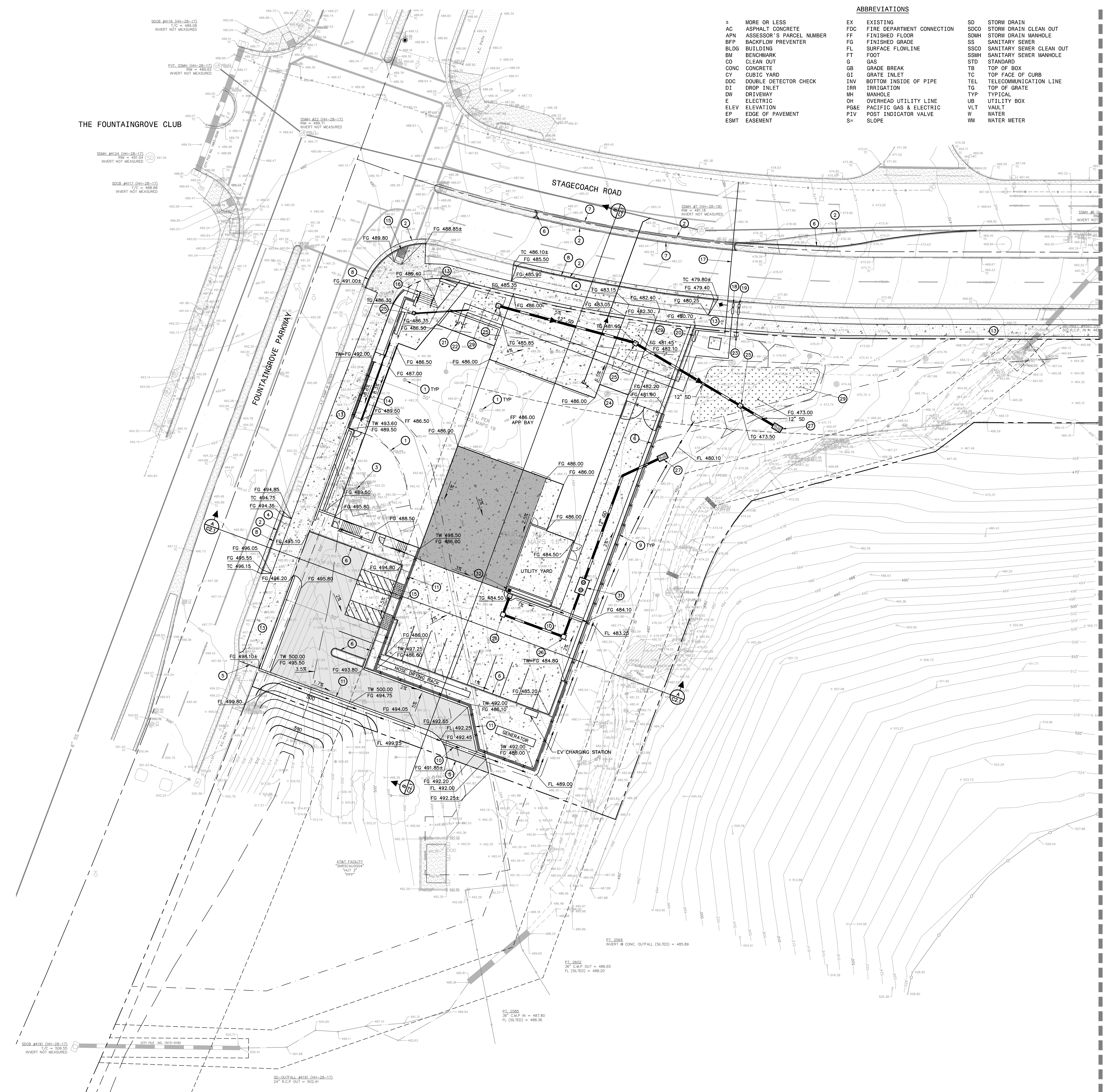
± MORE OR LESS	EX EXISTING	SD STORM DRAIN
AC ASPHALT CONCRETE	FDC FIRE DEPARTMENT CONNECTION	SDCO STORM DRAIN CLEAN OUT
APN ASSESSOR'S PARCEL NUMBER	FF FINISHED FLOOR	SDMH STORM DRAIN MANHOLE
BFP BACKFLOW PREVENTER	FG FINISHED GRADE	SS SANITARY SEWER
BLDG BUILDING	FL SURFACE FLOWLINE	SSCO SANITARY SEWER CLEAN OUT
BM BENCHMARK	FT FOOT	STD STANDARD
CO CLEAN OUT	GB GRADE BREAK	TS TOP OF BOX
CONC CONCRETE	GI GRATE INLET	TC TOP FACE OF CURB
CY CUBIC YARD	INV BOTTOM INSIDE OF PIPE	TEL TELECOMMUNICATION LINE
DDC DOUBLE DETECTOR CHECK	IRR IRRIGATION	TG TOP OF GRATE
DI DROP INLET	DW DRIVEWAY	TYP TYPICAL
DN DRIVEWAY	MH MANHOLE	UB UTILITY BOX
E ELECTRIC	OH OVERHEAD UTILITY LINE	VLT VAULT
ELEV ELEVATION	PG&E PACIFIC GAS & ELECTRIC	W WATER
EP EDGE OF PAVEMENT	PIV POST INDICATOR VALVE	WM WATER METER
ESMT EASEMENT	S- SLOPE	

- KEYNOTES:**
- 1 EXISTING MATERIAL OR FEATURE WILL BE REMOVED WITH THIS DEVELOPMENT
 - 2 EXISTING CURB AND GUTTER WILL BE REMOVED WHERE SHOWN ON THIS DRAWING
 - 3 EXISTING UTILITY WILL BE REMOVED WHERE SHOWN ON THIS DRAWING
 - 4 DRIVEWAY APRON
 - 5 CONFORM TO EXISTING SURFACE ELEVATION
 - 6 VERTICAL CONCRETE CURB
 - 7 FLUSH CONCRETE CURB
 - 8 CONCRETE CURB AND GUTTER
 - 9 CURB OPENING
 - 10 CONCRETE VALLEY GUTTER
 - 11 RETAINING WALL
 - 12 AC PEDESTRIAN SIDEWALK
 - 13 CONCRETE PEDESTRIAN SIDEWALK
 - 14 CONCRETE PEDESTRIAN RAMP WITH HANDRAILS
 - 15 PEDESTRIAN CURB RAMP AND DETECTABLE WARNING SURFACE
 - 16 STAIRS AND HANDRAILS
 - 17 COMBINATION FIRE, DOMESTIC AND IRRIGATION WATER SERVICE AND FIRE HYDRANT ASSEMBLY
 - 18 DOMESTIC WATER METER AND BACKFLOW PREVENTER
 - 19 IRRIGATION WATER METER AND BACKFLOW PREVENTER
 - 20 DOUBLE DETECTOR CHECK VALVE
 - 21 FIRE WATER SERVICE CONNECTION
 - 22 DOMESTIC WATER SERVICE CONNECTION
 - 23 IRRIGATION WATER SERVICE CONNECTION
 - 24 SANITARY SEWER SERVICE CONNECTION
 - 25 STORM DRAIN GRATE INLET
 - 26 STORM DRAIN DROP INLET
 - 27 STORM DRAIN OUTFALL
 - 28 STORMWATER BIORETENTION BASIN
 - 29 SAND OIL SEPARATOR
 - 30 FIRE HYDRANT AND LATERAL ASSEMBLY

SYMBOLS & LEGEND

EXISTING	PROPOSED	
		VALVE
		FIRE DEPARTMENT CONNECTION
		FIRE HYDRANT
		POST INDICATOR VALVE
		LIGHT POLE
		STREET SIGN
		STREET LIGHT
		UTILITY POLE
		TREE
		TREE CLUSTER
		TREE TO BE REMOVED
		PROPERTY LINE
		EASEMENT
		CENTERLINE
		GRADE BREAK
		FLOW LINE
		FENCE
		TREE PROTECTION FENCE
		SANITARY SEWER
		STORM DRAIN
		WATER
		OVERHEAD UTILITY LINE
		UNDERGROUND GAS LINE
		UNDERGROUND TELECOM LINE
		ASPHALT
		CONCRETE
		HEAVY WEIGHT CONCRETE
		DETECTABLE WARNING
		BIORETENTION AREA
		INVERT AT CLEANOUT
		KEYNOTE
		DETAIL IDENTIFICATION
		SHEET WHERE DETAIL IS SHOWN
		CROSS SECTION IDENTIFICATION
		SHEET WHERE CROSS SECTION IS SHOWN

MATCHLINE - SEE SHEET C2.1



Preliminary Design. Not For Construction Purposes.

PRELIMINARY
 NOT FOR CONSTRUCTION
 DATE: 02/03/2021
 STATE OF CALIFORNIA

**SANTA ROSA
 FIRE
 STATION 5**
 1400 FOUNTAIN GROVE
 PARKWAY
 SANTA ROSA, CA

REVISIONS

No.	Description	Date

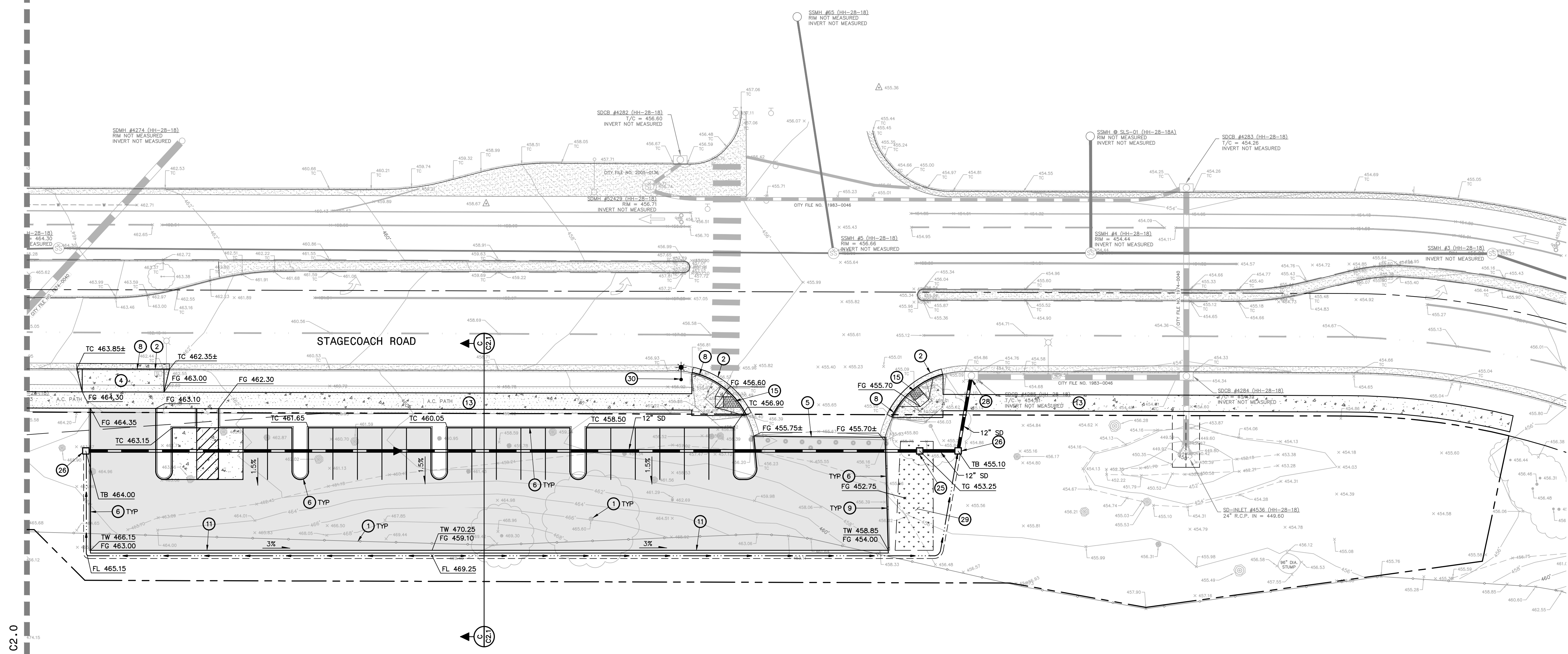
CEQA/NEPA DESIGN SET

Sheet Title
GRADING PLAN

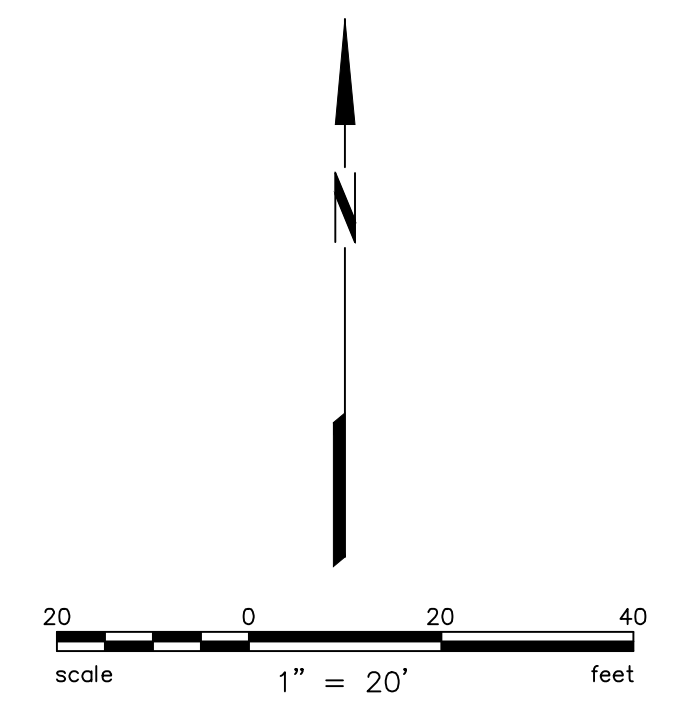
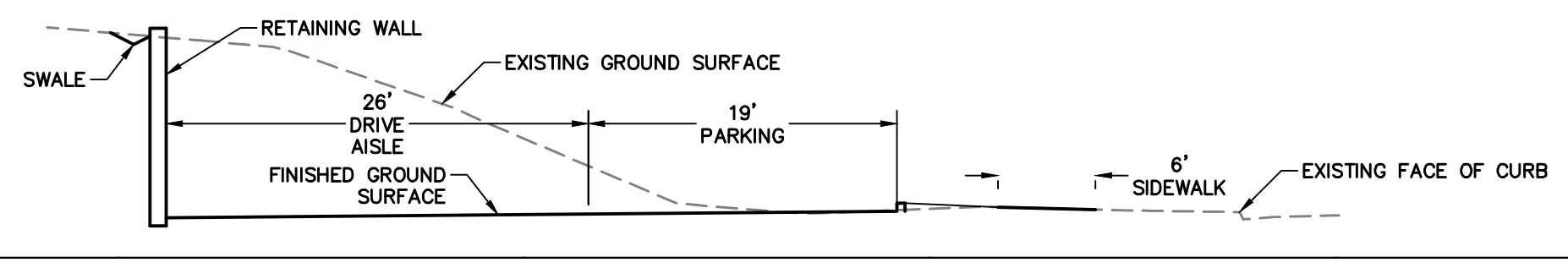
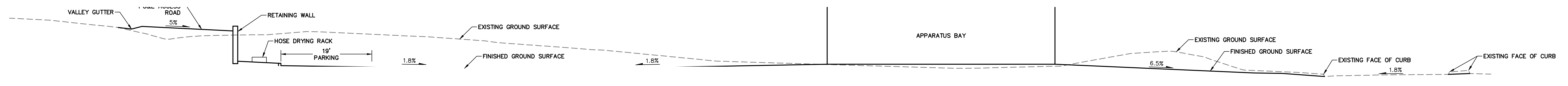
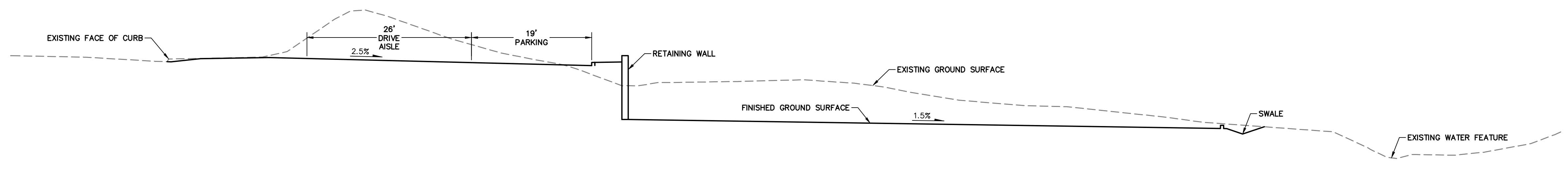
Drawn By: BTL Checked By: BD
 Scale: As Shown
 Date: 3 FEBRUARY 2021
 Project No.: 20201497

C2.1
 Drawing No.

- KEYNOTES:
- ① EXISTING MATERIAL OR FEATURE WILL BE REMOVED WITH THIS DEVELOPMENT
 - ② EXISTING CURB AND GUTTER WILL BE REMOVED WHERE SHOWN ON THIS DRAWING
 - ④ DRIVEWAY APRON
 - ⑤ CONFORM TO EXISTING SURFACE ELEVATION
 - ⑥ VERTICAL CONCRETE CURB
 - ⑧ CONCRETE CURB AND GUTTER
 - ⑨ CURB OPENING
 - ⑪ RETAINING WALL
 - ⑬ CONCRETE PEDESTRIAN SIDEWALK
 - ⑭ PEDESTRIAN CURB RAMP AND DETECTABLE WARNING SURFACE
 - ⑲ STORM DRAIN GRATE INLET
 - ⑳ STORM DRAIN DROP INLET
 - ㉑ STORM DRAIN CONNECTION TO EXISTING CATCH BASIN
 - ㉒ STORMWATER BIORETENTION BASIN
 - ㉓ STREET LIGHT



MATCHLINE - SEE SHEET C2-0



Preliminary Design. Not For Construction Purposes.



**SANTA ROSA
FIRE
STATION 5**
1400 FOUNTAIN GROVE
PARKWAY
SANTA ROSA, CA

REVISIONS

No.	Description	Date

**CEQA/NEPA DESIGN
SET**

Sheet Title
**TRUCK TURNING
MOVEMENTS**

Drawn By: BTL Checked By: BD

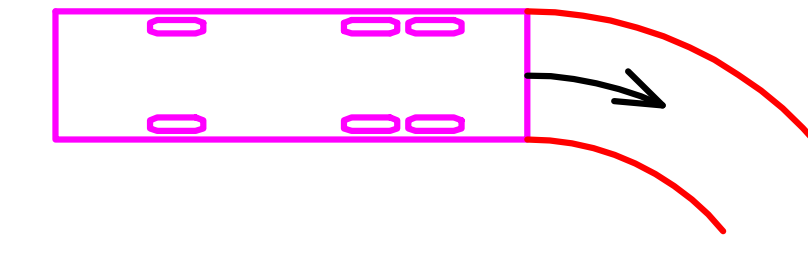
Scale:
As Shown

Date:
3 FEBRUARY 2021

Project No. 20201497

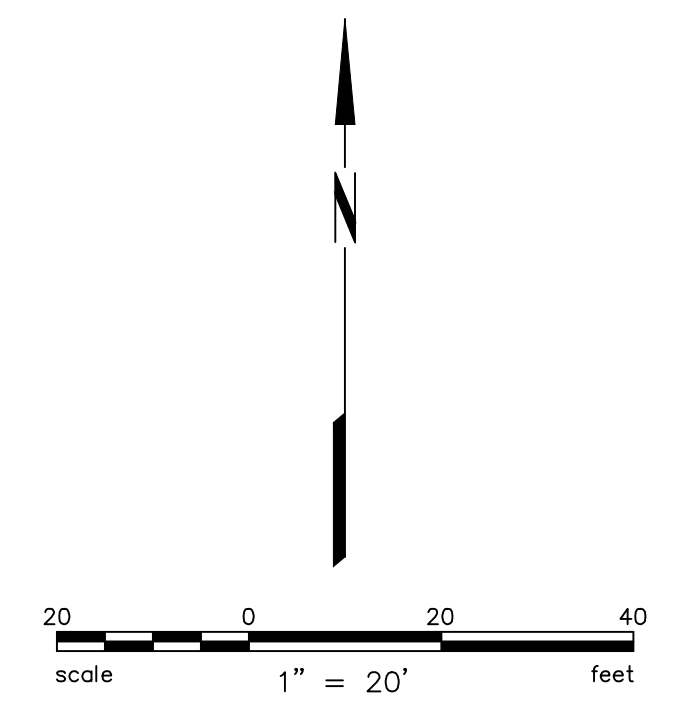
C4.0
Drawing No.

SYMBOLS & LEGEND



TYPE 1 FIRE ENGINE TURNING TEMPLATE

THE FOUNTAIN GROVE CLUB



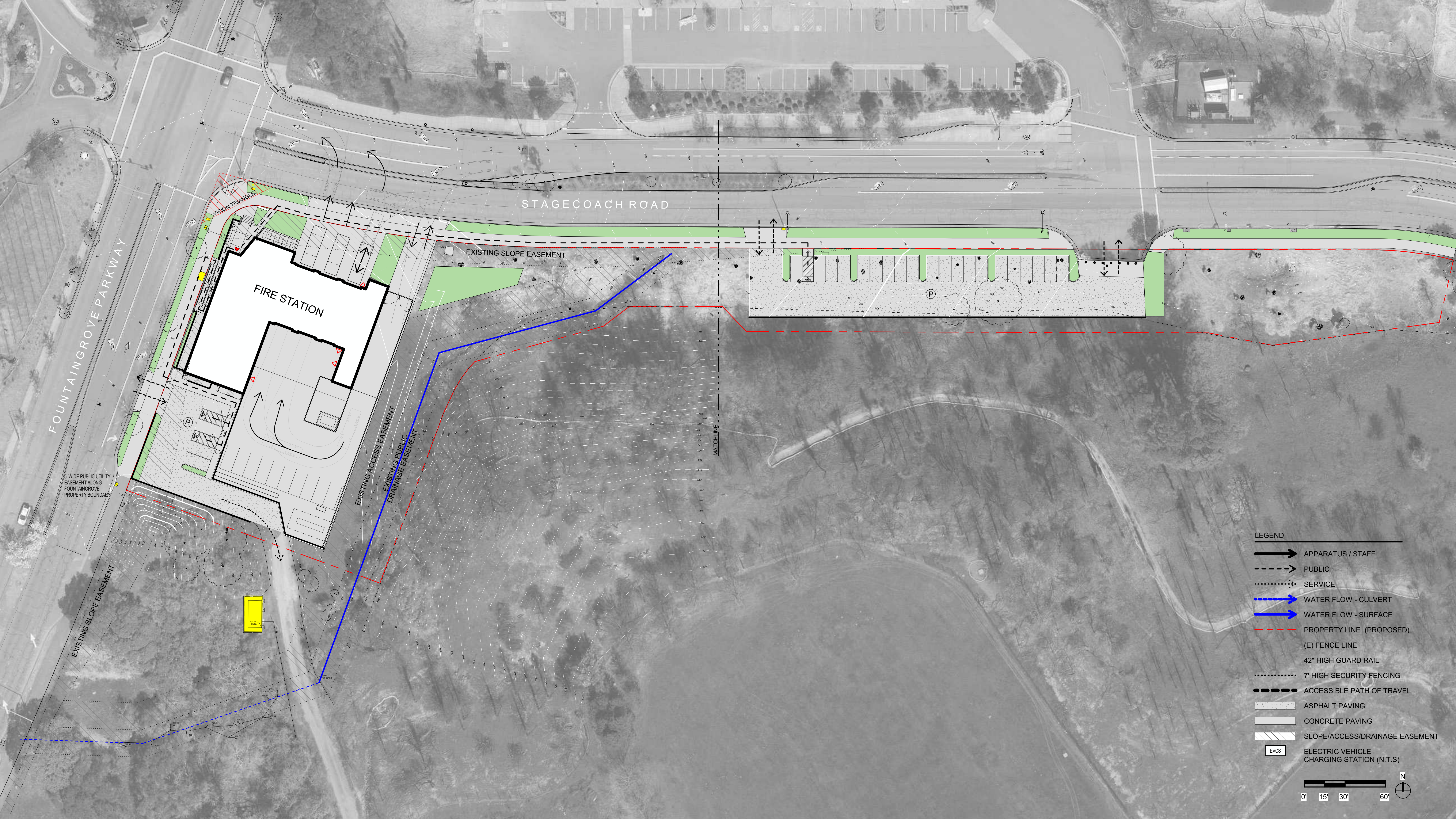
SANTA ROSA FIRE STATION 5
1400 FOUNTAIN GROVE PARKWAY
SANTA ROSA, CA

REVISIONS

No.	Description	Date

ARCHITECTURE & ENGINEERING DESIGN SUBMITTAL

Sheet Title
OVERALL SITE PLAN



1 OVERALL SITE PLAN
1" = 30'-0"

Drawn By Author Checked By Checker

Scale:
As indicated

Date:
16 FEBRUARY 2021

Project No. Project Number

A1.10
Drawing No.

SANTA ROSA FIRE STATION 5
1400 FOUNTAIN GROVE PARKWAY
SANTA ROSA, CA

REVISIONS

No.	Description	Date

ARCHITECTURE & ENGINEERING DESIGN SUBMITTAL

Sheet Title
SITE PLAN - WEST

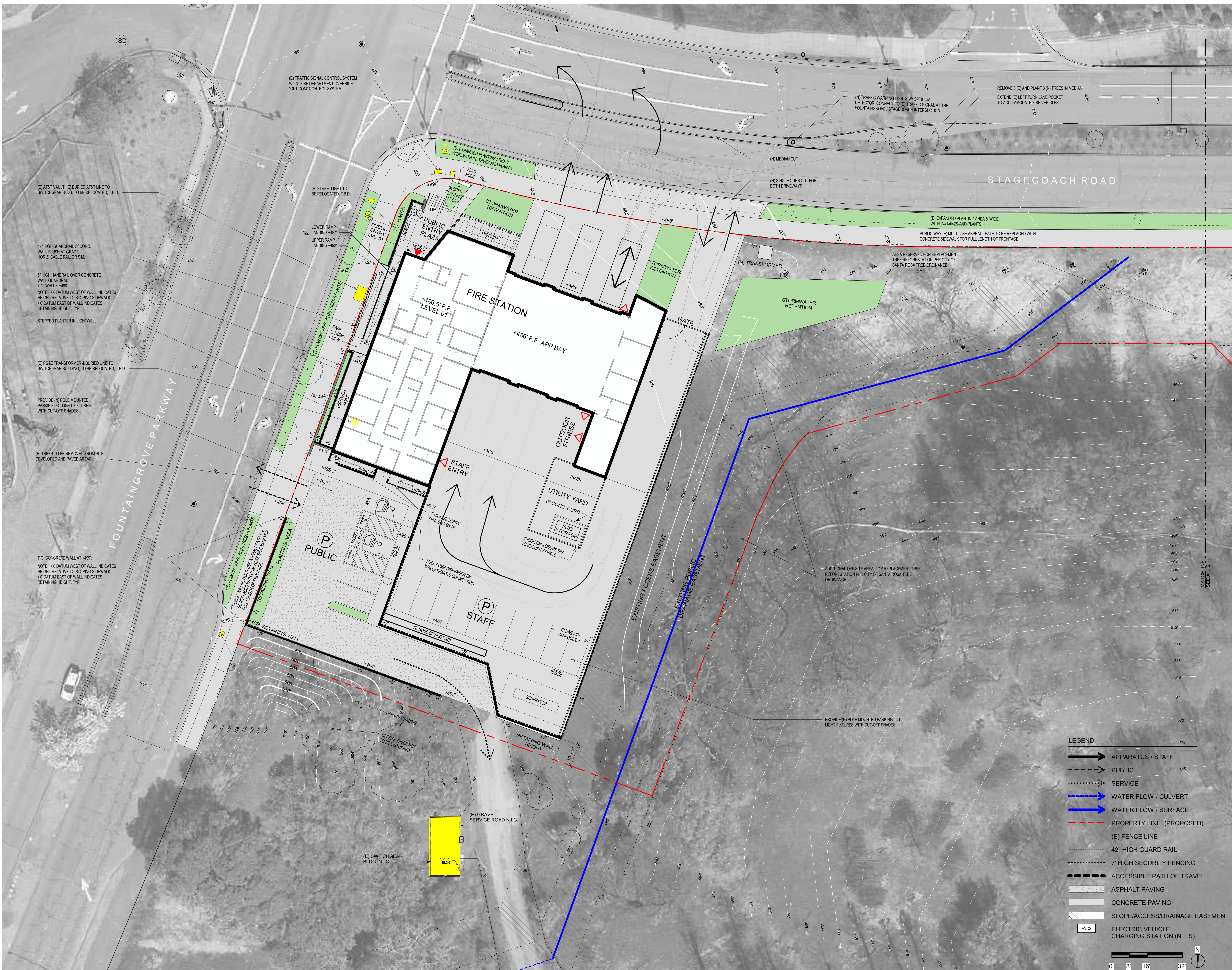
Drawn By Author Checked By Checker

Scale:
As Indicated

Date:
16 FEBRUARY 2021

Project No. Project Number

A1.11
Drawing No.



1 SITE PLAN - WEST
1/16" = 1'-0"

Preliminary Design. Not For Construction Purposes.

If this drawing is not 30" x 42", it is a reduced print - scale accordingly. All rights reserved. Material may not be reproduced in any form without permission from RossDrulisCusenbery Architecture, Inc.

SANTA ROSA FIRE STATION 5
1400 FOUNTAIN GROVE PARKWAY
SANTA ROSA, CA

REVISIONS

No.	Description	Date

ARCHITECTURE & ENGINEERING DESIGN SUBMITTAL

Sheet Title
SITE PLAN - EAST

Drawn By Author Checked By Checker

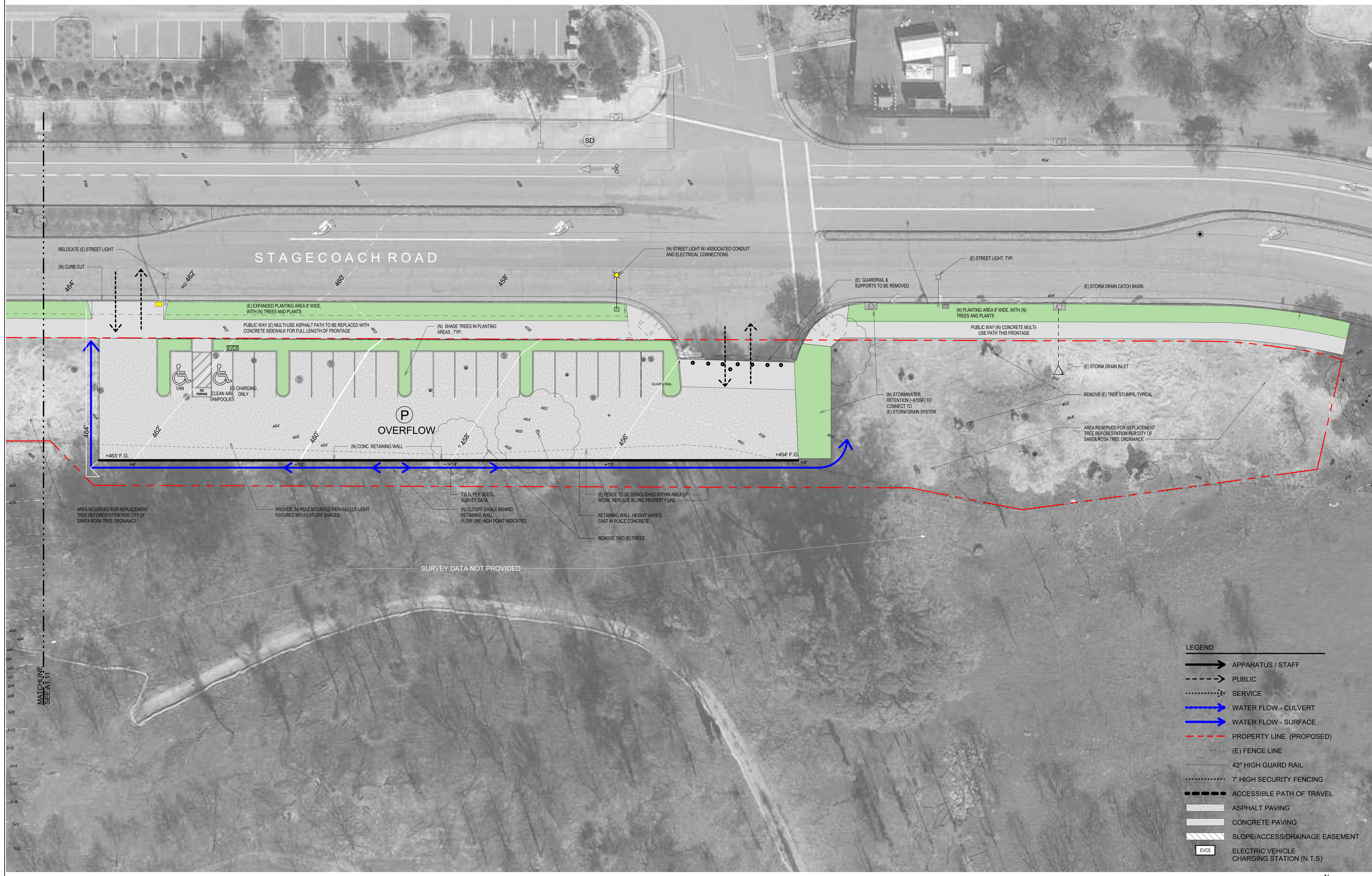
Scale:
As Indicated

Date:
16 FEBRUARY 2021

Project No. Project Number

A1.12
Drawing No.

If this drawing is not 30" x 42", it is a reduced print - scale accordingly. All rights reserved. Material may not be reproduced in any form without permission from RossDrulisCusenbery Architecture, Inc.



① SITE PLAN - EAST
1/16" = 1'-0"

Preliminary Design. Not For Construction Purposes.

SANTA ROSA FIRE STATION 5
1400 FOUNTAIN GROVE PARKWAY
SANTA ROSA, CA

REVISIONS

No.	Description	Date

ARCHITECTURE & ENGINEERING DESIGN SUBMITTAL

Sheet Title
FIRST FLOOR PLAN

Drawn By Author Checked By Checker

Scale:
1/8" = 1'-0"

Date:
16 FEBRUARY 2021

Project No. Project Number

A2.10

Drawing No.

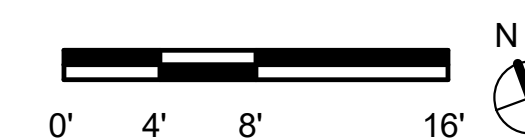
If this drawing is not 30" x 42", it is a reduced print - scale accordingly. All rights reserved. Material may not be reproduced in any form without permission from RossDrulisCusenbery Architecture, Inc.



① LEVEL ONE FLOOR PLAN
1/8" = 1'-0"

GROSS FLOOR AREA

LEVEL 01 8,889sf
LEVEL 02 1,874sf
TOTAL 10,763sf



SANTA ROSA FIRE STATION 5
1400 FOUNTAIN GROVE PARKWAY
SANTA ROSA, CA

REVISIONS

No.	Description	Date

ARCHITECTURE & ENGINEERING DESIGN SUBMITTAL

Sheet Title
SECOND FLOOR PLAN

Drawn By Author Checked By Checker

Scale:
1/8" = 1'-0"

Date:
16 FEBRUARY 2021

Project No. Project Number

A2.20
Drawing No.

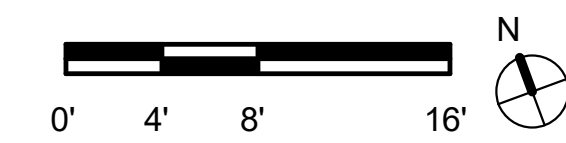
If this drawing is not 30" x 42", it is a reduced print - scale accordingly. All rights reserved. Material may not be reproduced in any form without permission from RossDrulisCusenbery Architecture, Inc.



① LEVEL TWO FLOOR PLAN
1/8" = 1'-0"

GROSS FLOOR AREA

LEVEL 01	8,889sf
LEVEL 02	1,874sf
TOTAL	10,763sf



SANTA ROSA FIRE STATION 5
1400 FOUNTAIN GROVE PARKWAY
SANTA ROSA, CA

REVISIONS		
No.	Description	Date

ARCHITECTURE & ENGINEERING DESIGN SUBMITTAL

Sheet Title
ROOF PLAN

Drawn By Author Checked By Checker

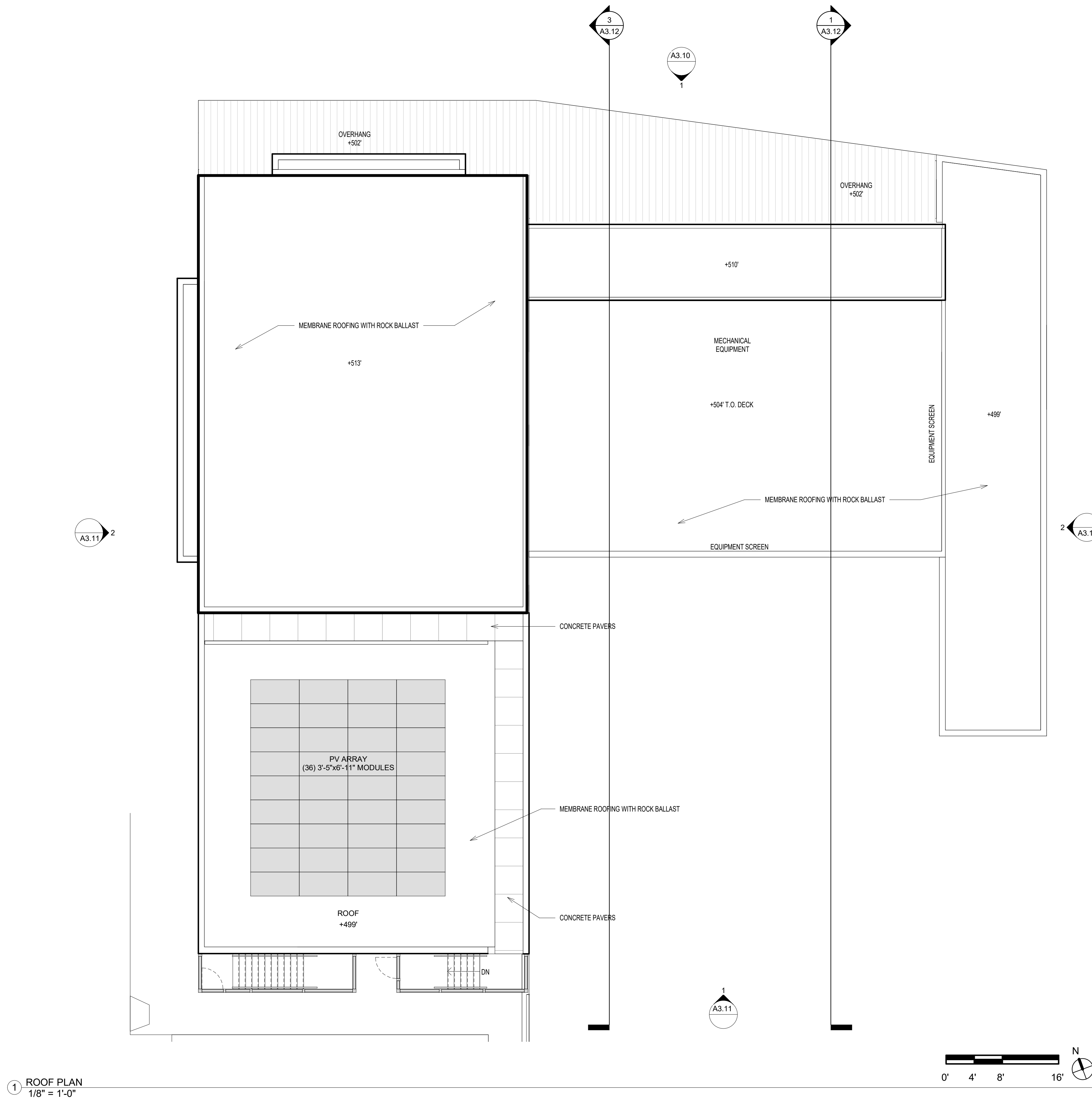
Scale:
1/8" = 1'-0"

Date:
16 FEBRUARY 2021

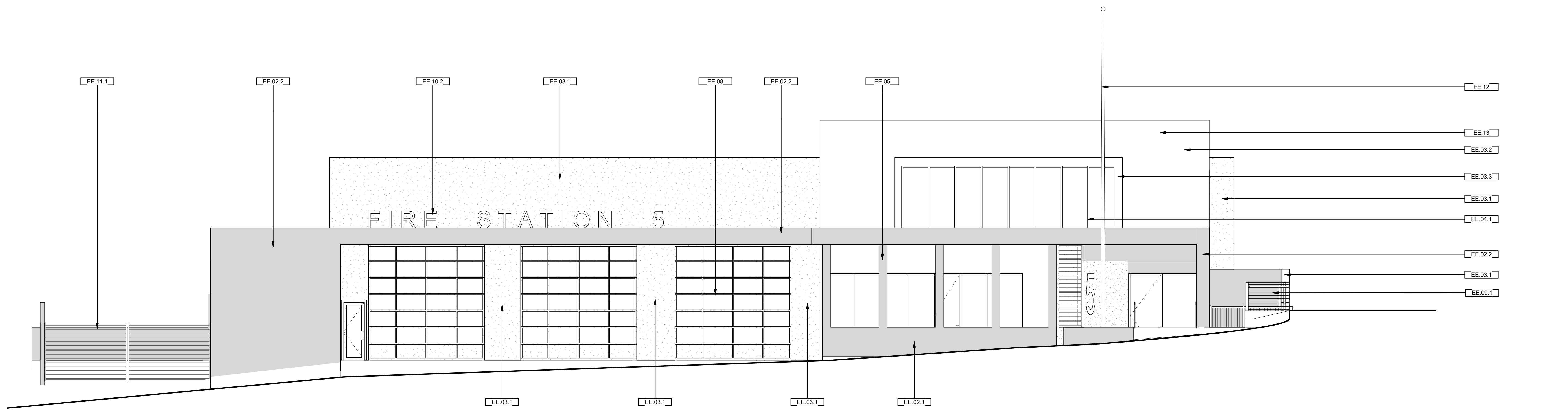
Project No. Project Number

A2.30
Drawing No.

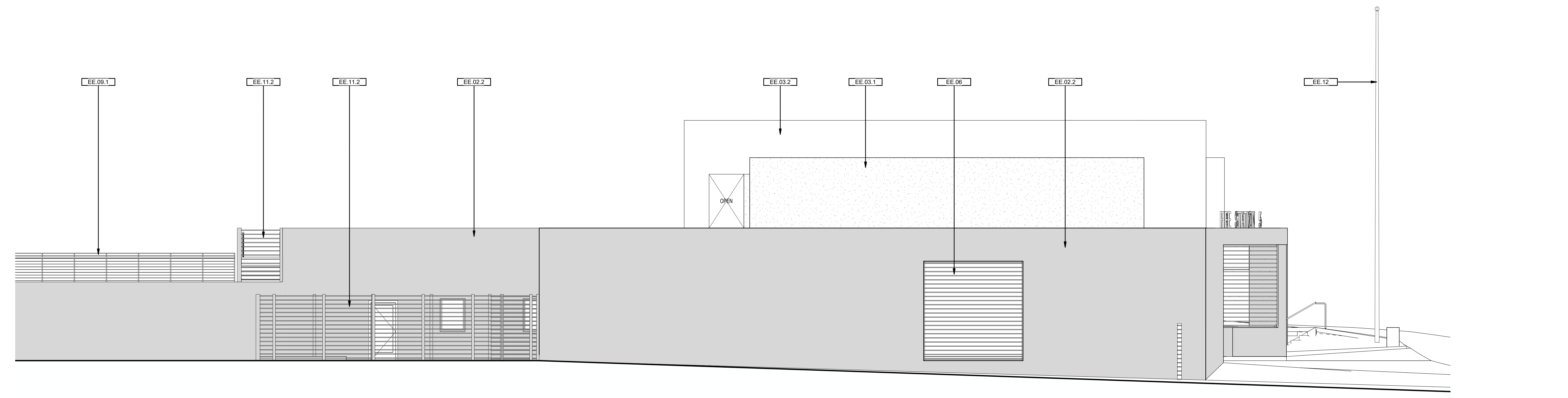
If this drawing is not 30" x 42", it is a reduced print - scale accordingly. All rights reserved. Material may not be reproduced in any form without permission from RossDrulisCusenbery Architecture, Inc.



1 ROOF PLAN
1/8" = 1'-0"



1 NORTH ELEVATION
3/16" = 1'-0"



2 EAST ELEVATION
3/16" = 1'-0"

KEYNOTES	
EE 02.1	HIGH DENSITY FIBERCEMENT PANELS, "SWISSPEARL" OR EQUAL. COST ADD A.L.T.: FLAGSTONE VENEER
EE 02.2	FIBERCEMENT PANELS, "SWISSPEARL" OR EQUAL. FASCIA & SOFFIT
EE 03.1	INTEGRAL COLOR CEMENT PLASTER - COLOR 01 "RED"
EE 03.2	INTEGRAL COLOR CEMENT PLASTER - COLOR 02 "CREAM"
EE 03.3	INTEGRAL COLOR CEMENT PLASTER ALL SIDES OF "BAY" WINDOW
EE 04.1	ALUMINUM STOREFRONT WINDOWS WITH TEMPERED GLASS
EE 05	PAINTED TUBE STEEL FINS
EE 06	POWDER COATED WALL LOUVER SYSTEM. MATCH COLOR OF ADJACENT WALL
EE 08	ALUMINUM ROLL-UP GLAZED APPARATUS BAY DOORS WITH TEMPERED GLASS, MOTOR OPERATED
EE 09.1	STAINLESS STEEL CABLE GUARDRAIL SYSTEM ALONG SIDEWALK
EE 10.2	SIGNAGE, PAINTED WALL MOUNTED DIMENSIONAL INDIVIDUAL LETTERS
EE 11.1	SITE SECURITY FENCING & GATE - ORSOGRIIL "TALIA LOUVER PANEL"
EE 11.2	UTILITY YARD SITE SECURITY FENCING & GATE - ORSOGRIIL "TALIA LOUVER PANEL"
EE 12	ALUMINUM TAPERED FLAGPOLE WITH INTERNAL HALO YARD AND BALL FINIAL
EE 13	ELECTRONIC PUBLIC EMERGENCY NOTIFICATION SIGN TO BE LOCATED ON THIS BUILDING ELEVATION. TYPE, SIZE, AND LOCATION T.B.D.

SANTA ROSA FIRE STATION 5
1400 FOUNTAIN GROVE PARKWAY
SANTA ROSA, CA

REVISIONS		
No.	Description	Date

ARCHITECTURE & ENGINEERING DESIGN SUBMITTAL

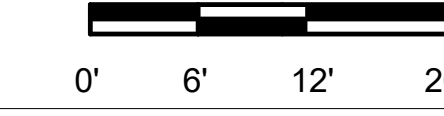
Sheet Title
EXTERIOR ELEVATIONS

Drawn By Author Checked By Checker
Scale:
3/16" = 1'-0"
Date:
16 FEBRUARY 2021
Project No. Project Number

A3.10
Drawing No.



① NORTH ELEVATION
3/32" = 1'-0"

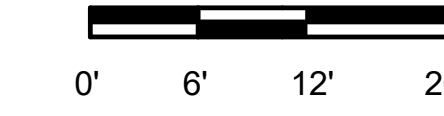


**SANTA ROSA FIRE
STATION 5**
1400 FOUNTAIN GROVE
PARKWAY
SANTA ROSA, CA

REVISIONS		
No.	Description	Date



② EAST ELEVATION
3/32" = 1'-0"



**ARCHITECTURE &
ENGINEERING DESIGN
SUBMITTAL**

Sheet Title
EXTERIOR ELEVATIONS

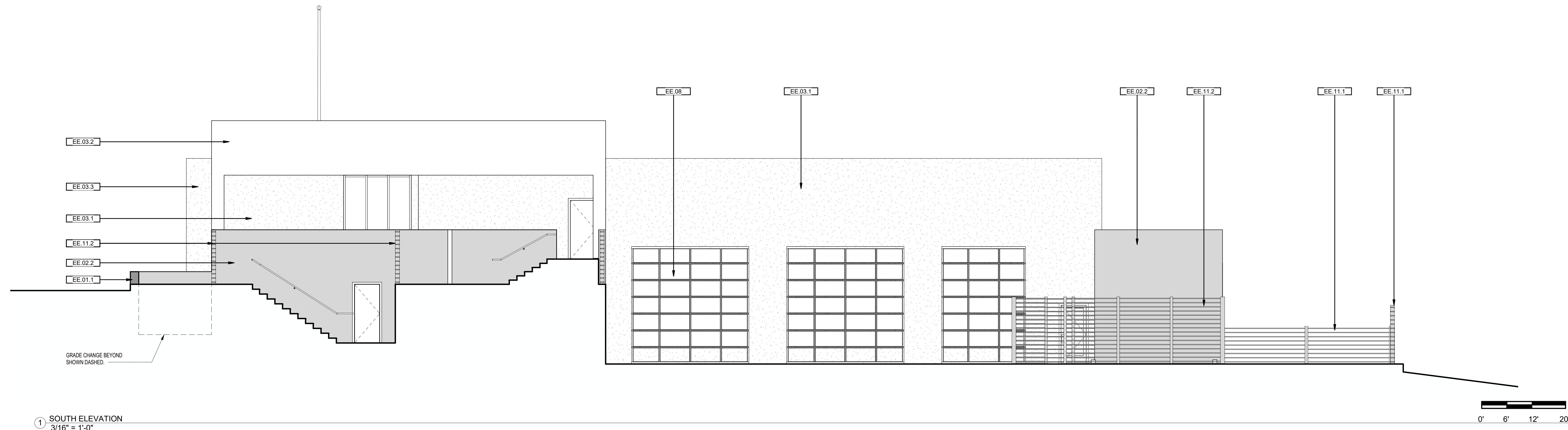
Drawn By Author Checked By Checker

Scale:
3/32" = 1'-0"

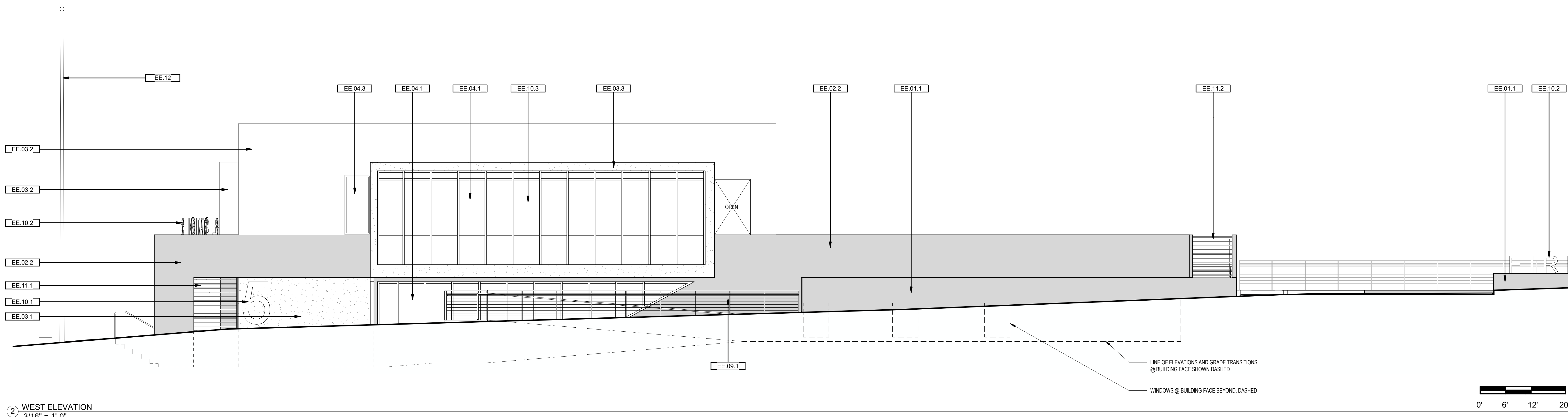
Date:
16 FEBRUARY 2021

Project No. Project Number

A3.10a
Drawing No.



1 SOUTH ELEVATION
3/16" = 1'-0"



2 WEST ELEVATION
3/16" = 1'-0"

KEYNOTES	
EE.01.1	COLOR CAST IN PLACE CONCRETE SITE WALL. COST ADD ALT.: STANDARD CONCRETE WITH FLAGSTONE VENEER ALL EXPOSED SIDES
EE.02.2	FIBERCEMENT PANELS - "SWISSPEARL" OR EQUAL FASCIA & SOFFIT
EE.03.1	INTEGRAL COLOR CEMENT PLASTER - COLOR 01 "RED"
EE.03.2	INTEGRAL COLOR CEMENT PLASTER - COLOR 02 "CREAM"
EE.03.3	INTEGRAL COLOR CEMENT PLASTER ALL SIDES OF "BAY" WINDOW
EE.04.1	ALUMINUM STOREFRONT WINDOWS WITH TEMPERED GLASS
EE.04.3	ALUMINUM WINDOW WITH TEMPERED GLASS
EE.08	ALUMINUM ROLL-UP GLAZED APPARATUS BAY DOORS WITH TEMPERED GLASS. MOTOR OPERATED
EE.09.1	STAINLESS STEEL CABLE GUARDRAIL SYSTEM ALONG SIDEWALK
EE.10.1	SUPER GRAPHIC SIGNAGE ON WALL
EE.10.2	SIGNAGE. PAINTED WALL MOUNTED DIMENSIONAL INDIVIDUAL LETTERS
EE.10.3	SIGNAGE. ETCHED GLASS SUPER GRAPHIC OF SANTA ROSA FIRE DEPARTMENT LOGO INTEGRAL WITH CURTAIN WALL GLAZING
EE.11.1	SITE SECURITY FENCING & GATE - ORSOGRIL "TALIA LOUVER PANEL"
EE.11.2	UTILITY YARD SITE SECURITY FENCING & GATE - ORSOGRIL "TALIA LOUVER PANEL"
EE.12	ALUMINUM TAPERED FLAGPOLE WITH INTERNAL HALYARD AND BALL FINIAL

SANTA ROSA FIRE STATION 5
1400 FOUNTAIN GROVE PARKWAY
SANTA ROSA, CA

REVISIONS

No.	Description	Date

ARCHITECTURE & ENGINEERING DESIGN SUBMITTAL

Sheet Title
EXTERIOR ELEVATIONS

Drawn By Author Checked By Checker

Scale:
3/16" = 1'-0"

Date:
16 FEBRUARY 2021

Project No. Project Number

A3.11
Drawing No.

SANTA ROSA FIRE STATION 5
1400 FOUNTAIN GROVE PARKWAY
SANTA ROSA, CA

REVISIONS

No.	Description	Date

ARCHITECTURE & ENGINEERING DESIGN SUBMITTAL

Sheet Title

EXTERIOR ELEVATIONS

Drawn By Author Checked By Checker

Scale:
3/32" = 1'-0"

Date:
16 FEBRUARY 2021

Project No. Project Number

A3.11a
Drawing No.

If this drawing is not 30" x 42", it is a reduced print - scale accordingly. All rights reserved. Material may not be reproduced in any form without permission from RossDrulisCusenbery Architecture, Inc.



① SOUTH ELEVATION
3/32" = 1'-0"



② WEST ELEVATION
3/32" = 1'-0"

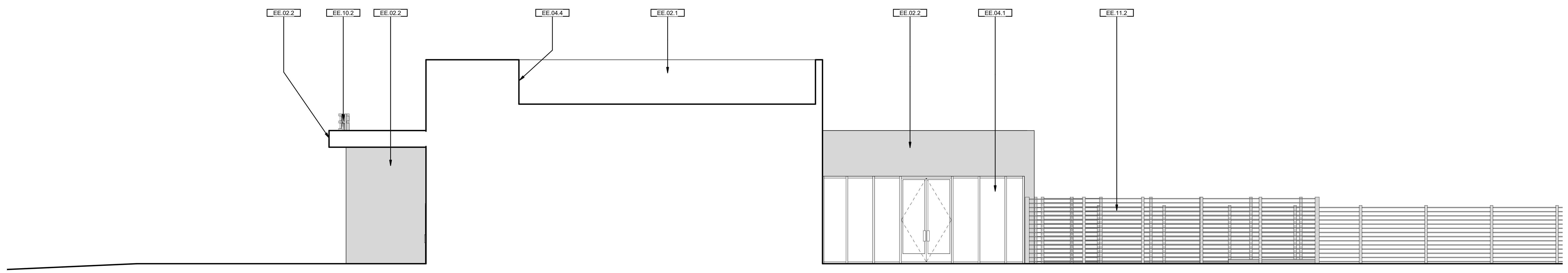
SANTA ROSA FIRE STATION 5
1400 FOUNTAIN GROVE PARKWAY
SANTA ROSA, CA

REVISIONS

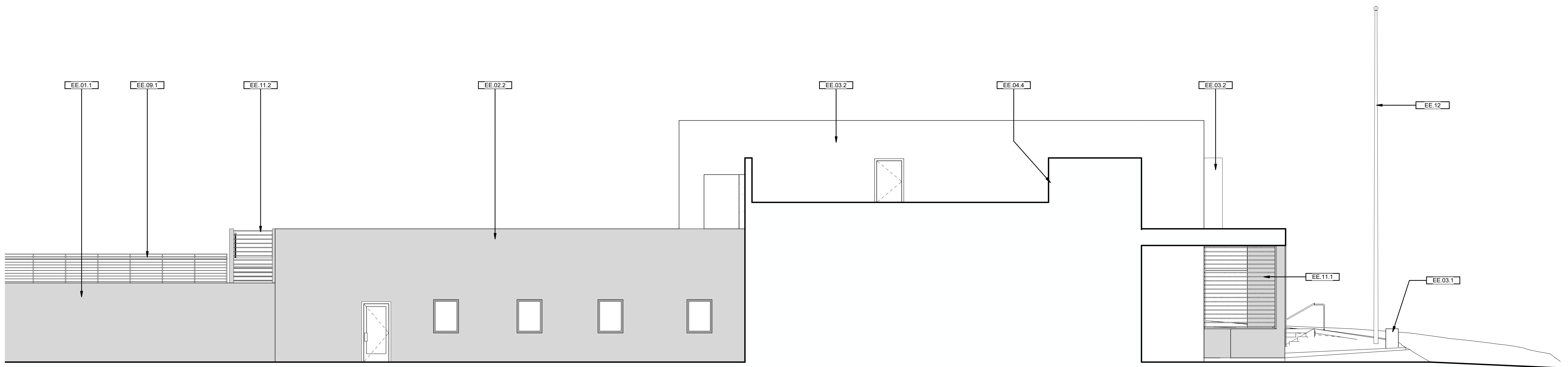
No.	Description	Date

ARCHITECTURE & ENGINEERING DESIGN SUBMITTAL

Sheet Title
EXTERIOR ELEVATIONS



1 WEST ELEVATION 2
3/16" = 1'-0"



3 EAST ELEVATION 2
3/16" = 1'-0"



KEYNOTES
EE.01.1 COLORED CAST IN PLACE CONCRETE SITE WALL. COST ADD ALT.: STANDARD CONCRETE WITH FLAGSTONE VENEER ALL EXPOSED SIDES
EE.02.1 HIGH DENSITY FIBERCEMENT PANELS, "SWISSPEARL" OR EQUAL. COST ADD ALT.: FLAGSTONE VENEER
EE.02.2 FIBERCEMENT PANELS, "SWISSPEARL" OR EQUAL FASCIA & SOFFIT
EE.03.1 INTEGRAL COLOR CEMENT PLASTER - COLOR 01 "RED"
EE.03.2 INTEGRAL COLOR CEMENT PLASTER - COLOR 02 "CREAM"
EE.04.1 ALUMINUM STOREFRONT WINDOWS WITH TEMPERED GLASS
EE.04.4 ALUMINUM FRAME TEMPERED GLASS CLERESTORY WINDOW AT ROOF
EE.09.1 STAINLESS STEEL CABLE GUARDRAIL SYSTEM ALONG SIDEWALK
EE.10.2 SIGNAGE, PAINTED WALL MOUNTED DIMENSIONAL INDIVIDUAL LETTERS
EE.11.1 SITE SECURITY FENCING & GATE - ORSOGRIL "TALIA LOUVER PANEL"
EE.11.2 UTILITY YARD SITE SECURITY FENCING & GATE - ORSOGRIL "TALIA LOUVER PANEL"
EE.12 ALUMINUM TAPERED FLAGPOLE WITH INTERNAL HALLYARD AND BALL FINIAL

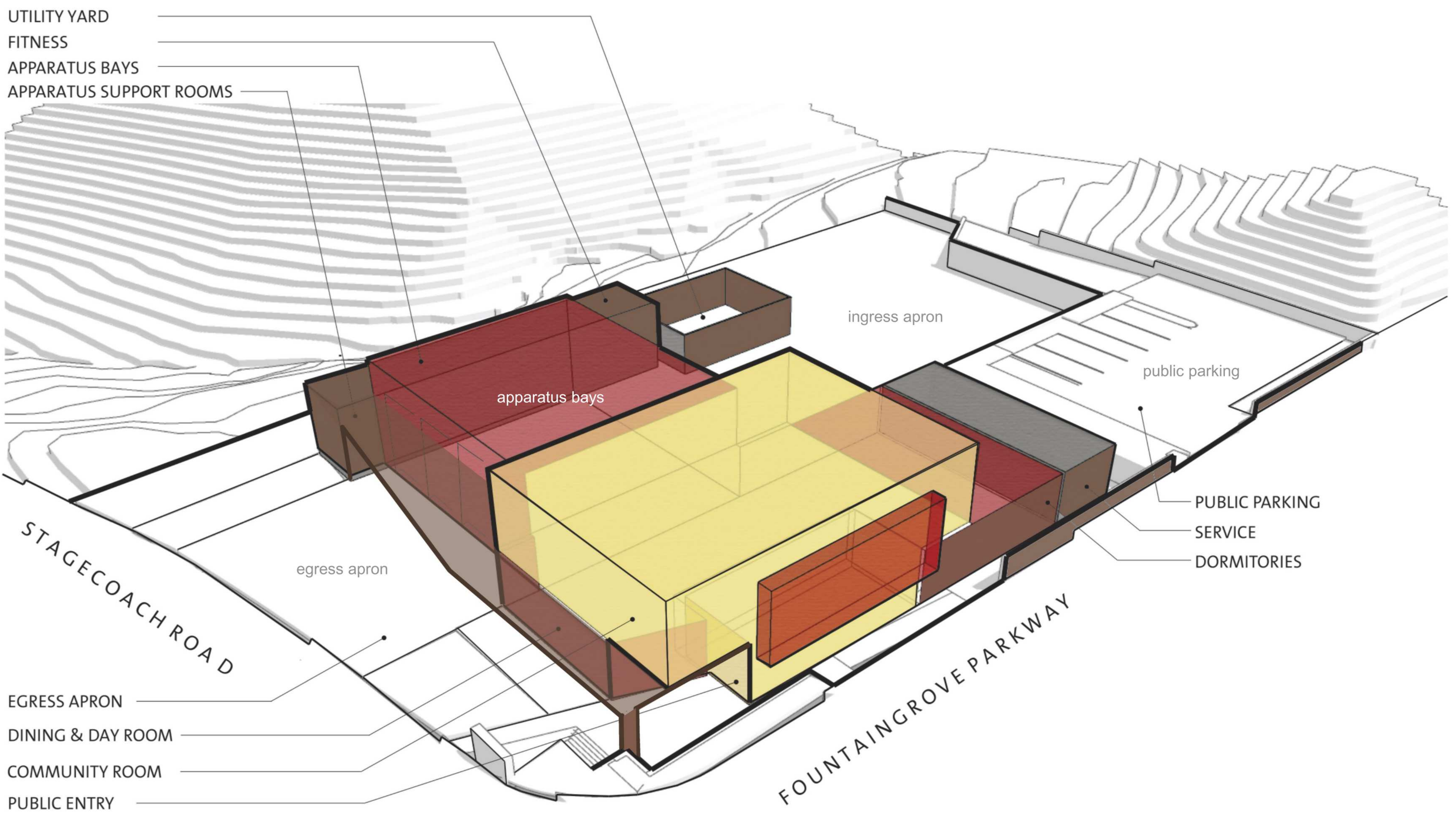
Drawn By Author Checked By Checker

Scale:
3/16" = 1'-0"

Date:
16 FEBRUARY 2021

Project No. Project Number

A3.12
Drawing No.



UTILITY YARD
FITNESS
APPARATUS BAYS
APPARATUS SUPPORT ROOMS

ingress apron

apparatus bays

public parking

egress apron

PUBLIC PARKING
SERVICE
DORMITORIES

STAGECOACH ROAD

EGRESS APRON
DINING & DAY ROOM
COMMUNITY ROOM
PUBLIC ENTRY

FOUNTAINGROVE PARKWAY

SANTA ROSA FIRE STATION 5
1400 FOUNTAINGROVE PARKWAY
SANTA ROSA, CA

REVISIONS

No.	Description	Date

ARCHITECTURE & ENGINEERING DESIGN SUBMITTAL

Sheet Title
3D PROGRAM DIAGRAM

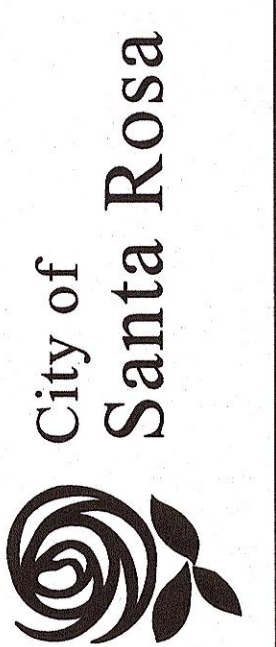
Drawn By Author Checked By Checker

Scale:

Date:
16 FEBRUARY 2021

Project No. Project Number

A3.20
Drawing No.



BASIS OF BEARINGS

NORTH 85° 39' 04" WEST BETWEEN CITY OF SANTA ROSA HORIZONTAL CONTROL NETWORK MONUMENTS G-475 & G-467. NAD83 - ZONE 2 - EPOCH 2010.00

BENCHMARK

CITY OF SANTA ROSA VERTICAL CONTROL NETWORK BENCHMARK C-290. ELEVATION = 456.42 FEET (NGVD 29).

SURVEY NOTES

- ALL EXISTING VISIBLE UTILITY MARKOUTS ARE SHOWN HEREON. CURRENT UTILITY MARKOUTS WERE NOT PERFORMED PRIOR TO OR DURING THIS SURVEY.
- SANITARY SEWER AND STORM DRAIN LINEWORK SHOWN ON THIS SURVEY ARE DRAFTED FROM RECORD DATA. NO SANITARY SEWER OR STORM DRAIN STRUCTURES WERE OPENED & INSPECTED DURING THIS SURVEY.
- ALL EXISTING SLOPE, DRAINAGE AND ACCESS EASEMENTS SHOWN HEREON ARE APPURTENANT TO THE CITY OF SANTA ROSA.

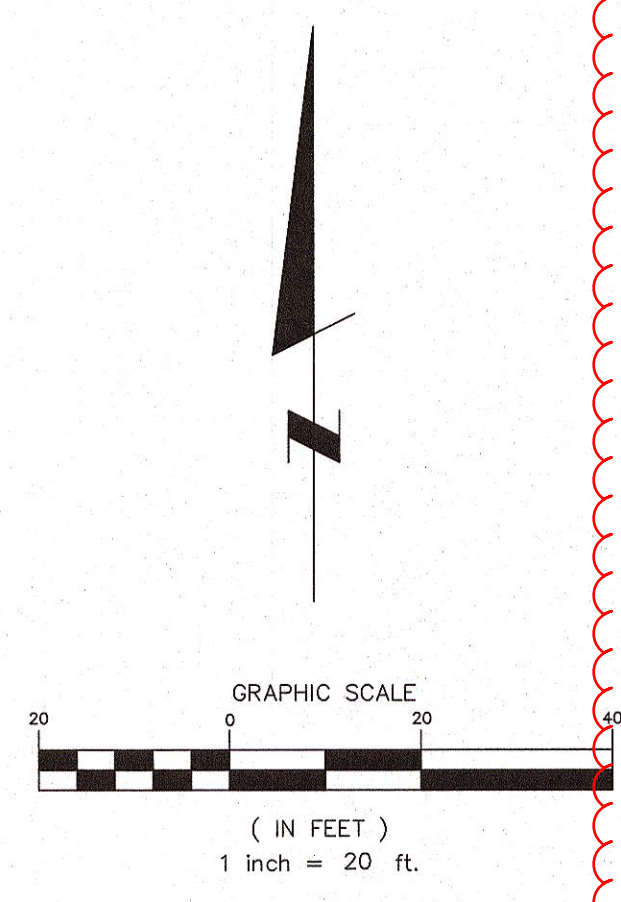
TREE REPLACEMENT*

- 22" OAK 8
- 10" OAK 4
- 5" OAK 2
- 20" OAK 8
- 16" OAK 6
- 15" OAK 6
- 10" OAK 4
- 10" OAK 4
- 6" BAY 2
- 5" BAY 2
- 24" OAK 8
- 8" OAK 4
- 12" OAK 4
- 18" OAK 6

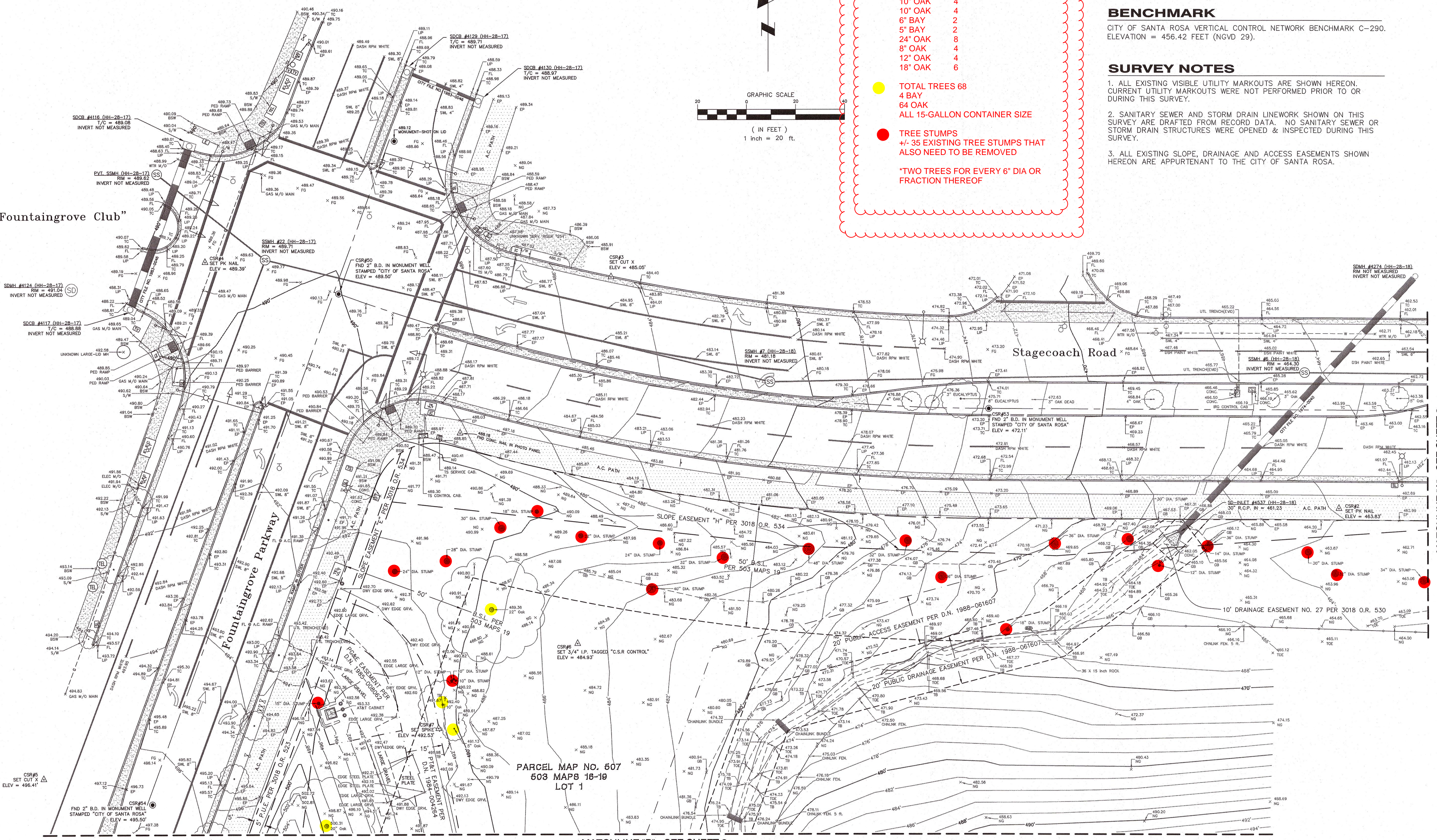
TOTAL TREES 68
4 BAY
64 OAK
ALL 15-GALLON CONTAINER SIZE

TREE STUMPS
+/- 35 EXISTING TREE STUMPS THAT ALSO NEED TO BE REMOVED

***TWO TREES FOR EVERY 6" DIA OR FRACTION THEREOF**



"The Fountaingrove Club"



MATCHLINE "A" - SEE SHEET 2

MATCHLINE "B" - SEE SHEET 3

LEGEND (ALL MAY NOT APPLY)		ELECTRIC - GUY ANCHOR		GAS - VALVE		STORM DRAIN - CATCH BASIN		TRAFFIC SIGNAL - CABINET, SERVICE		WATER - IRRIGATION VALVE		B.D. BRASS DISK		G.B. GRADE BREAK		N.T. NO TAG		S.S.M.H. SANITARY SEWER MANHOLE		U.T. UTILITY TRENCH	
●	FOUND IRON PIPE AS NOTED	-E-E-	ELECTRIC - MARKOUT	⊕	GAS - VAULT	⊕	STORM DRAIN - DROOP INLET	⊕	TRAFFIC SIGNAL - DETECTOR LOOP	⊕	WATER - MARKOUT	⊕	O.R. OFFICIAL RECORDS	⊕	S/W SIDEWALK	⊕	V.G. VALLEY GUTTER	⊕	U.T. VALLEY GUTTER	⊕	W.M. WATER METER
○	FOUND CENTERLINE MONUMENT, SIZE AS NOTED	-OHV-	ELECTRIC - OVERHEAD WIRE	⊕	MALIBOX	⊕	STORM DRAIN - MANHOLE	⊕	TRAFFIC SIGNAL - DETECTOR LOOP, BIKE	⊕	WATER - METER	⊕	D.W. DASHED WHITE	⊕	O.V. GAS VALVE	⊕	W.M. WATER METER	⊕	W.R. WATER	⊕	W.V. WATER VALVE
⊕	FOUND NAIL & TAG, STAMPED AS NOTED	⊕	ELECTRIC - METER	⊕	ROCK	⊕	TELEPHONE - MANHOLE	⊕	TRAFFIC SIGNAL - INTERCONNECT MARKOUT	⊕	WATER - MONITORING WELL	⊕	D.Y. DRIVEWAY	⊕	G.V. GAS VALVE	⊕	W.V. WATER VALVE	⊕	W.T. WATER	⊕	Y-Y DOUBLE YELLOW
⊕	SET SURVEY CONTROL POINT AS NOTED	⊕	ELECTRIC - SURFACE TRANSFORMER	⊕	SANITARY SEWER - CLEANOUT (MAIN)	⊕	TELEPHONE - MARKOUT	⊕	TRAFFIC SIGNAL - LOOPWIRE HANDHOLE	⊕	WATER - POST INDICATOR VALVE	⊕	D.W. DASHED YELLOW	⊕	H.O.H. HEADWALK	⊕	W.V. WATER VALVE	⊕	W.T. WATER	⊕	Y-Y DOUBLE YELLOW
⊕	BARRICADE - BOLLARD	⊕	ELECTRIC - VAULT	⊕	SANITARY SEWER - CLEANOUT (SERVICE)	⊕	TELEPHONE - PULLBOX	⊕	TRAFFIC SIGNAL - MARKOUT	⊕	WATER - SPRINKLER HEAD	⊕	E.D.C. EDGE OF CONCRETE BAND	⊕	I.C. INTERCONNECT	⊕	P.I.V. POST INDICATOR VALVE	⊕	W.T. WATER	⊕	Y-Y DOUBLE YELLOW
-TV-TV-	CABLE TV - MARKOUT	⊕	ELECTRIC - SURFACE TRANSFORMER	⊕	SANITARY SEWER - MANHOLE	⊕	TELEPHONE - SERVICE RISER	⊕	TRAFFIC SIGNAL - PEDESTRIAN SIGNAL POLE	⊕	WATER - TRENCH	⊕	E.V. EVERGREEN	⊕	I.N.V. INVERT	⊕	P.U.E. PUBLIC UTILITY EASEMENT	⊕	W.V. WATER VALVE	⊕	Y-Y DOUBLE YELLOW
⊕	CABLE TV - SERVICE RISER	⊕	ELECTRIC - VAULT	⊕	SANITARY SEWER - SCRIBED "S" (SERVICE)	⊕	TELEPHONE - VAULT	⊕	TRAFFIC SIGNAL - POLE W/45" MAST ARM	⊕	WATER - VAULT	⊕	E.P. EDGE OF PAVEMENT	⊕	I.R.R. IRRIGATION	⊕	R.C.P. REINFORCED CONCRETE PIPE	⊕	W.V. WATER VALVE	⊕	Y-Y DOUBLE YELLOW
⊕	CABLE TV - PULLBOX	⊕	ELECTRIC - CHAINLINK	⊕	SHRUB	⊕	TELEPHONE - SERVICE RISER	⊕	TRAFFIC SIGNAL - POLE W/35" MAST ARM	⊕	WATER - W/20" MAST ARM	⊕	E.V. EVERGREEN	⊕	I.N.V. INVERT	⊕	P.U.E. PUBLIC UTILITY EASEMENT	⊕	W.V. WATER VALVE	⊕	Y-Y DOUBLE YELLOW
⊕	CABLE TV - PULLBOX	⊕	ELECTRIC - FENCE - WIRE	⊕	SIGN	⊕	TELEPHONE - VAULT	⊕	TRAFFIC SIGNAL - POLE W/40" MAST ARM	⊕	WATER - W/15" MAST ARM	⊕	E.P. EDGE OF PAVEMENT	⊕	I.R.R. IRRIGATION	⊕	R.C.P. REINFORCED CONCRETE PIPE	⊕	W.V. WATER VALVE	⊕	Y-Y DOUBLE YELLOW
⊕	CABLE TV - SERVICE RISER	⊕	ELECTRIC - FENCE - WOOD	⊕	STREET LIGHT - STREET LIGHT	⊕	TELEPHONE - VAULT	⊕	TRAFFIC SIGNAL - POLE W/50" MAST ARM	⊕	WATER - W/15" MAST ARM	⊕	E.V. EVERGREEN	⊕	I.R.R. IRRIGATION	⊕	R.C.P. REINFORCED CONCRETE PIPE	⊕	W.V. WATER VALVE	⊕	Y-Y DOUBLE YELLOW
⊕	ELECTRIC - PULLBOX	⊕	ELECTRIC - GATE POST	⊕	STREET LIGHT - ELECTROLIGHT	⊕	TELEPHONE - VAULT	⊕	TRAFFIC SIGNAL - POLE W/20" MAST ARM	⊕	WATER - W/15" MAST ARM	⊕	E.P. EDGE OF PAVEMENT	⊕	I.R.R. IRRIGATION	⊕	R.C.P. REINFORCED CONCRETE PIPE	⊕	W.V. WATER VALVE	⊕	Y-Y DOUBLE YELLOW
⊕	ELECTRIC - JOINT POLE	⊕	ELECTRIC - ANODE	⊕	STREET LIGHT - STREET LIGHT	⊕	TELEPHONE - VAULT	⊕	TRAFFIC SIGNAL - POLE W/20" MAST ARM	⊕	WATER - W/15" MAST ARM	⊕	E.P. EDGE OF PAVEMENT	⊕	I.R.R. IRRIGATION	⊕	R.C.P. REINFORCED CONCRETE PIPE	⊕	W.V. WATER VALVE	⊕	Y-Y DOUBLE YELLOW
⊕	ELECTRIC - JOINT POLE W/LIGHT	⊕	ELECTRIC - ETS	⊕	STREET LIGHT - STREET LIGHT	⊕	TELEPHONE - VAULT	⊕	TRAFFIC SIGNAL - POLE W/20" MAST ARM	⊕	WATER - W/15" MAST ARM	⊕	E.P. EDGE OF PAVEMENT	⊕	I.R.R. IRRIGATION	⊕	R.C.P. REINFORCED CONCRETE PIPE	⊕	W.V. WATER VALVE	⊕	Y-Y DOUBLE YELLOW
⊕	ELECTRIC - JOINT POLE W/RISER	⊕	ELECTRIC - GAS - MARKOUT	⊕	STREET LIGHT - STREET LIGHT	⊕	TELEPHONE - VAULT	⊕	TRAFFIC SIGNAL - POLE W/20" MAST ARM	⊕	WATER - W/15" MAST ARM	⊕	E.P. EDGE OF PAVEMENT	⊕	I.R.R. IRRIGATION	⊕	R.C.P. REINFORCED CONCRETE PIPE	⊕	W.V. WATER VALVE	⊕	Y-Y DOUBLE YELLOW
⊕	ELECTRIC - JOINT POLE W/LIGHT & RISER	⊕	ELECTRIC - GAS - MARKOUT	⊕	STREET LIGHT - STREET LIGHT	⊕	TELEPHONE - VAULT	⊕	TRAFFIC SIGNAL - POLE W/20" MAST ARM	⊕	WATER - W/15" MAST ARM	⊕	E.P. EDGE OF PAVEMENT	⊕	I.R.R. IRRIGATION	⊕	R.C.P. REINFORCED CONCRETE PIPE	⊕	W.V. WATER VALVE	⊕	Y-Y DOUBLE YELLOW
⊕	ELECTRIC - JOINT POLE W/LIGHT & RISER	⊕	ELECTRIC - GAS - MARKOUT	⊕	STREET LIGHT - STREET LIGHT	⊕	TELEPHONE - VAULT	⊕	TRAFFIC SIGNAL - POLE W/20" MAST ARM	⊕	WATER - W/15" MAST ARM	⊕	E.P. EDGE OF PAVEMENT	⊕	I.R.R. IRRIGATION	⊕	R.C.P. REINFORCED CONCRETE PIPE	⊕	W.V. WATER VALVE	⊕	Y-Y DOUBLE YELLOW
⊕	ELECTRIC - JOINT POLE W/LIGHT & RISER	⊕	ELECTRIC - GAS - MARKOUT	⊕	STREET LIGHT - STREET LIGHT	⊕	TELEPHONE - VAULT	⊕	TRAFFIC SIGNAL - POLE W/20" MAST ARM	⊕	WATER - W/15" MAST ARM	⊕	E.P. EDGE OF PAVEMENT	⊕	I.R.R. IRRIGATION	⊕	R.C.P. REINFORCED CONCRETE PIPE	⊕	W.V. WATER VALVE	⊕	Y-Y DOUBLE YELLOW

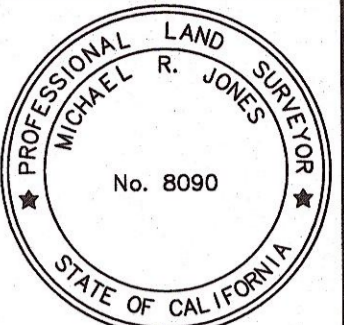
NO.	DATE	BY	REVISION

DATE: 10/14/2019
 CHK BY: MRJ
 THIS MAP REPRESENTS A FIELD SURVEY MADE BY ME OR UNDER MY DIRECTION IN SEPTEMBER 2019.
 Date: 10/14/2019
 By: MICHAEL R. JONES, P.L.S. 8090

TOPOGRAPHIC MAP
Permanent Fire Station 5 Rebuild
Fountaingrove Parkway & Stagecoach Road

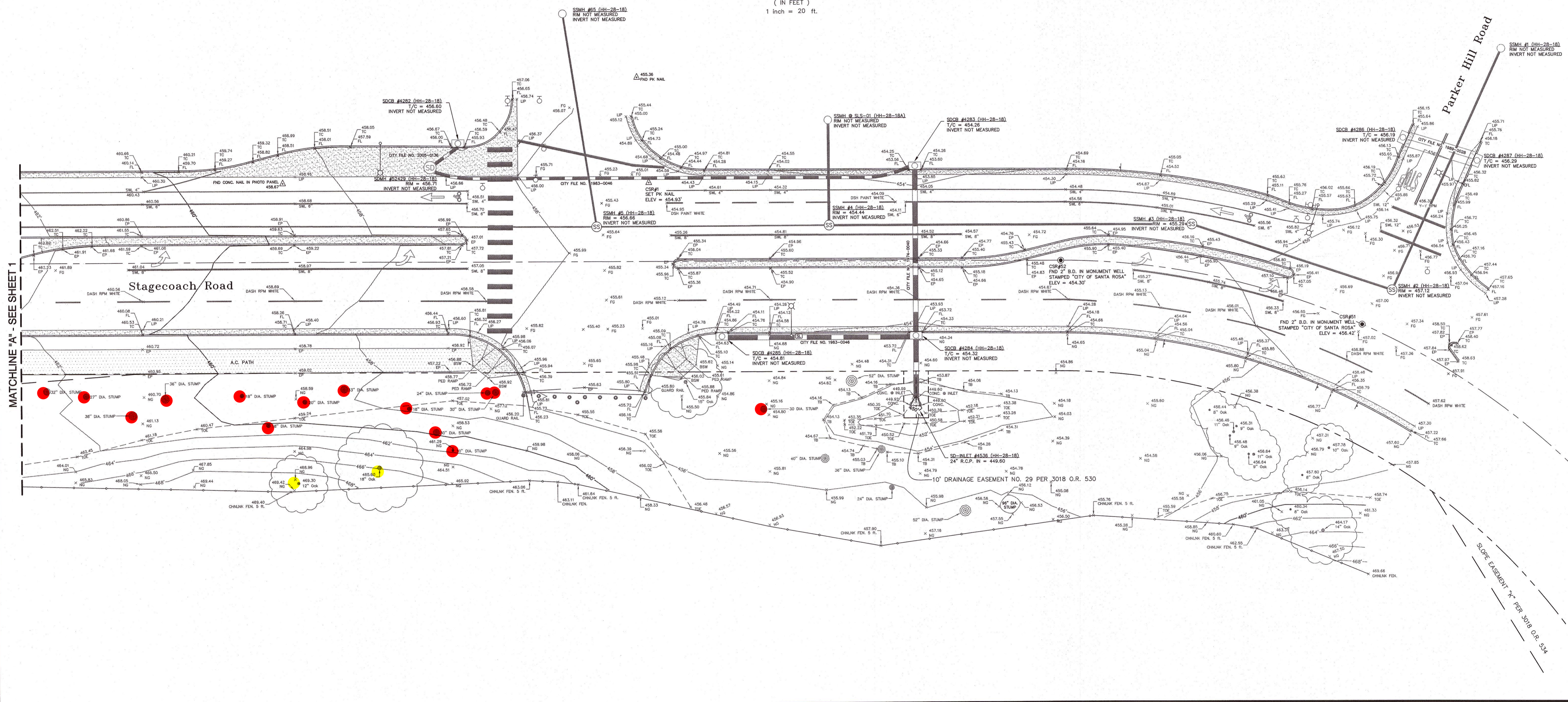
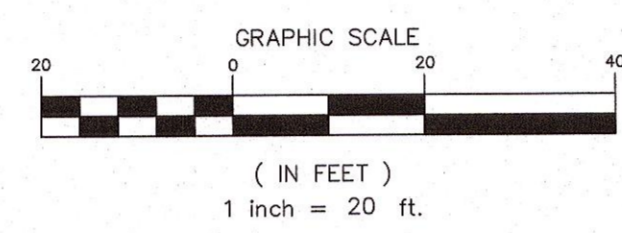
SCALE: 1" = 20'
 DWN BY: WCO
 FIELD BOOK NUMBER 184-M1
 SHEET: 1 OF 3
 PID NO.: 02184

10/18/2019 12:25 PM \\projects\2019_2018\02184 permanent fire station 5 rebuild\02-cad.dwg\02184 permanent fire station 5 rebuild.dwg



SURVEY NOTES

1. ALL EXISTING VISIBLE UTILITY MARKOUTS ARE SHOWN HEREON. CURRENT UTILITY MARKOUTS WERE NOT PERFORMED PRIOR TO OR DURING THIS SURVEY.
2. SANITARY SEWER AND STORM DRAIN LINEWORK SHOWN ON THIS SURVEY ARE DRAFTED FROM RECORD DATA. NO SANITARY SEWER OR STORM DRAIN STRUCTURES WERE OPENED & INSPECTED DURING THIS SURVEY.
3. ALL EXISTING SLOPE, DRAINAGE AND ACCESS EASEMENTS SHOWN HEREON ARE APPURTENANT TO THE CITY OF SANTA ROSA.



MATCHLINE "A" - SEE SHEET 1

LEGEND (ALL MAY NOT APPLY)	
● FOUND IRON PIPE AS NOTED	○ ELECTRIC - GUY ANCHOR
○ FOUND CENTERLINE MONUMENT, SIZE AS NOTED	-E-E-E- ELECTRIC - MARKOUT
○ FOUND NAIL & TAG, STAMP AS NOTED	-OHW- ELECTRIC - OVERHEAD WIRE
△ SET SURVEY CONTROL POINT AS NOTED	EM ELECTRIC - METER
△ BARRICADE - BOLLARD	EM TRANSFORMER
TV CABLE TV - MARKOUT	○ SANITARY SEWER - CLEANOUT (MAN)
TV CABLE TV - PULLBOX	○ SANITARY SEWER - CLEANOUT (SERVICE)
TV CABLE TV - SERVICE RISER	○ SANITARY SEWER - MANHOLE
○ ELECTRIC - PULLBOX	○ SANITARY SEWER - SCRIBED "S" (SERVICE)
○ ELECTRIC - JOINT POLE	○ SHRUB
○ ELECTRIC - JOINT POLE W/LIGHT	○ SIGN
○ ELECTRIC - JOINT POLE W/RISER	○ STREET LIGHT - STREET LIGHT
○ ELECTRIC - JOINT POLE W/LIGHT & RISER	○ STREET LIGHT - ELECTROLUER
○ GAS - VALVE	○ STREET LIGHT - PULLBOX
○ GAS - VAULT	○ GAS - ANODE
○ MAILBOX	○ GAS - ETS
○ ROCK	○ GAS - MARKOUT
○ SANITARY SEWER - CLEANOUT (MAN)	○ GAS - METER
○ SANITARY SEWER - CLEANOUT (SERVICE)	○ TELEPHONE - MANHOLE
○ SANITARY SEWER - MANHOLE	○ TELEPHONE - MARKOUT
○ SANITARY SEWER - SCRIBED "S" (SERVICE)	○ TELEPHONE - PULLBOX
○ SHRUB	○ TELEPHONE - SERVICE RISER
○ SIGN	○ TELEPHONE - VAULT
○ STREET LIGHT - STREET LIGHT	○ TREE - DECIDUOUS
○ STREET LIGHT - ELECTROLUER	○ TREE - EVERGREEN
○ STREET LIGHT - PULLBOX	○ TREE - PALM
○ GAS - VALVE	○ TRAFFIC SIGNAL - CABINET, CONTROL
○ GAS - VAULT	○ TRAFFIC SIGNAL - CABINET, SERVICE
○ MAILBOX	○ TRAFFIC SIGNAL - DETECTOR LOOP
○ ROCK	○ TRAFFIC SIGNAL - DETECTOR LOOP, BIKE
○ SANITARY SEWER - CLEANOUT (MAN)	○ TRAFFIC SIGNAL - INTERCONNECT MARKOUT
○ SANITARY SEWER - CLEANOUT (SERVICE)	○ TRAFFIC SIGNAL - LOOPWIRE HANDHOLE
○ SANITARY SEWER - MANHOLE	○ TRAFFIC SIGNAL - MARKOUT
○ SANITARY SEWER - SCRIBED "S" (SERVICE)	○ TRAFFIC SIGNAL - PEDESTRIAN SIGNAL POLE
○ SHRUB	○ TRAFFIC SIGNAL - PULLBOX
○ SIGN	○ TRAFFIC SIGNAL - POLE 1B
○ STREET LIGHT - STREET LIGHT	○ TRAFFIC SIGNAL - POLE W/25' MAST ARM
○ STREET LIGHT - ELECTROLUER	○ TRAFFIC SIGNAL - POLE W/35' MAST ARM
○ STREET LIGHT - PULLBOX	○ TRAFFIC SIGNAL - POLE W/40' MAST ARM
○ GAS - VALVE	○ TRAFFIC SIGNAL - POLE W/45' MAST ARM
○ GAS - VAULT	○ TRAFFIC SIGNAL - POLE W/50' MAST ARM
○ MAILBOX	○ TRAFFIC SIGNAL - POLE W/50' MAST ARM
○ ROCK	○ TRAFFIC SIGNAL - VAULT
○ SANITARY SEWER - CLEANOUT (MAN)	○ TRUNCATED DOMES
○ SANITARY SEWER - CLEANOUT (SERVICE)	○ UTILITY (UNKNOWN) TRENCH - CENTERLINE
○ SANITARY SEWER - MANHOLE	○ WATER - BLOW OFF VALVE
○ SANITARY SEWER - SCRIBED "S" (SERVICE)	○ WATER - FIRE HYDRANT
○ SHRUB	○ WATER - IRRIGATION VALVE
○ SIGN	○ WATER - MARKOUT
○ STREET LIGHT - STREET LIGHT	○ WATER - METER
○ STREET LIGHT - ELECTROLUER	○ WATER - MONITORING WELL
○ STREET LIGHT - PULLBOX	○ WATER - POST INDICATOR VALVE
○ GAS - VALVE	○ WATER - SPRINKLER HEAD
○ GAS - VAULT	○ WATER - VALVE
○ MAILBOX	○ WATER - VAULT
○ ROCK	○ WATER - VAULT
○ SANITARY SEWER - CLEANOUT (MAN)	○ 2 WY LT TWO WAY LEFT
○ SANITARY SEWER - CLEANOUT (SERVICE)	○ AC ASPHALT CONCRETE
○ SANITARY SEWER - MANHOLE	○ AG/CONC AGGREGATE CONCRETE
○ SANITARY SEWER - SCRIBED "S" (SERVICE)	○ B/F BASE @ FACE
○ SHRUB	○ BFP BACK FLOW PREVENTION VALVE
○ SIGN	○ B.D. BRASS DISK
○ STREET LIGHT - STREET LIGHT	○ BLDG BUILDING
○ STREET LIGHT - ELECTROLUER	○ BSW BACK OF SIDEWALK
○ STREET LIGHT - PULLBOX	○ CAB CABINET
○ GAS - VALVE	○ C&G CURB AND GUTTER
○ GAS - VAULT	○ CB CATCH BASIN
○ MAILBOX	○ CL CENTERLINE
○ ROCK	○ CSR CITY OF SANTA ROSA
○ SANITARY SEWER - CLEANOUT (MAN)	○ CMP CORRUGATED METAL PIPE
○ SANITARY SEWER - CLEANOUT (SERVICE)	○ CO CLEANOUT
○ SANITARY SEWER - MANHOLE	○ CONC CONCRETE
○ SANITARY SEWER - SCRIBED "S" (SERVICE)	○ C.S.S.C. COUNTY SURVEYOR SONOMA COUNTY
○ SHRUB	○ DECID. DECIDUOUS
○ SIGN	○ DETECT DETECTOR
○ STREET LIGHT - STREET LIGHT	○ DW DASHED WHITE
○ STREET LIGHT - ELECTROLUER	○ DWY DRIVEWAY
○ STREET LIGHT - PULLBOX	○ DYM DASHED YELLOW
○ GAS - VALVE	○ EDGE EDGE/CONCRETE BAND
○ GAS - VAULT	○ ELEC. ELECTRIC
○ MAILBOX	○ EP EDGE OF PAVEMENT
○ ROCK	○ EVGRN EVERGREEN
○ SANITARY SEWER - CLEANOUT (MAN)	○ F/C FACE OF CURB
○ SANITARY SEWER - CLEANOUT (SERVICE)	○ FEN FENCE
○ SANITARY SEWER - MANHOLE	○ FEN FENCE
○ SANITARY SEWER - SCRIBED "S" (SERVICE)	○ F/G FINISH GRADE
○ SHRUB	○ FH FIRE HYDRANT
○ SIGN	○ FL FLOWLINE
○ STREET LIGHT - STREET LIGHT	○ FND FOUND
○ STREET LIGHT - ELECTROLUER	○ GB GRADE BREAK
○ STREET LIGHT - PULLBOX	○ GM GAS METER
○ GAS - VALVE	○ GV GAS VALVE
○ GAS - VAULT	○ HDWL HEADWALL
○ MAILBOX	○ IC INTERCONNECT
○ ROCK	○ INV INVERT
○ SANITARY SEWER - CLEANOUT (MAN)	○ IP IRON PIPE
○ SANITARY SEWER - CLEANOUT (SERVICE)	○ IRR IRRIGATION
○ SANITARY SEWER - MANHOLE	○ JB JUNCTION BOX
○ SANITARY SEWER - SCRIBED "S" (SERVICE)	○ JRP JOINT POLE
○ SHRUB	○ LP LIP OF GUTTER
○ SIGN	○ MH MANHOLE
○ STREET LIGHT - STREET LIGHT	○ M/O MARKOUT
○ STREET LIGHT - ELECTROLUER	○ NG NATURAL GROUND
○ STREET LIGHT - PULLBOX	○ NT NO TAG
○ GAS - VALVE	○ OHW OVERHEAD WIRE
○ GAS - VAULT	○ ORN ORNAMENTAL TREE
○ MAILBOX	○ PB PULLBOX
○ ROCK	○ PIV POST INDICATOR VALVE
○ SANITARY SEWER - CLEANOUT (MAN)	○ PVC PVC PIPE
○ SANITARY SEWER - CLEANOUT (SERVICE)	○ RCP REINFORCED CONCRETE PIPE
○ SANITARY SEWER - MANHOLE	○ RPM RAISED PAVEMENT MARKER
○ SANITARY SEWER - SCRIBED "S" (SERVICE)	○ RR RAILROAD
○ SHRUB	○ RSR RISER
○ SIGN	○ SERV. SERVICE
○ STREET LIGHT - STREET LIGHT	○ SD STORM DRAIN
○ STREET LIGHT - ELECTROLUER	○ SDM STORM DRAIN MANHOLE
○ STREET LIGHT - PULLBOX	○ SL STREET LIGHT
○ GAS - VALVE	○ SSM SANITARY SEWER MANHOLE
○ GAS - VAULT	○ S/W SIDEWALK
○ MAILBOX	○ SWL SOLID YELLOW LINE
○ ROCK	○ SVL SOLID WHITE LINE
○ SANITARY SEWER - CLEANOUT (MAN)	○ TB TOP OF BANK
○ SANITARY SEWER - CLEANOUT (SERVICE)	○ TC TOP OF CURB
○ SANITARY SEWER - MANHOLE	○ TR TELEPHONE
○ SANITARY SEWER - SCRIBED "S" (SERVICE)	○ TOE TOE OF BANK OR SLOPE
○ SHRUB	○ TEE TEE WELL
○ SIGN	○ TS TRAFFIC SIGNAL
○ STREET LIGHT - STREET LIGHT	○ UT UTILITY TRENCH
○ STREET LIGHT - ELECTROLUER	○ VG VALLEY OUTER
○ STREET LIGHT - PULLBOX	○ VLT VAULT
○ GAS - VALVE	○ WM WATER METER
○ GAS - VAULT	○ WTR WATER
○ MAILBOX	○ WY WATER VALVE
○ ROCK	○ Y-Y DOUBLE YELLOW
○ SANITARY SEWER - CLEANOUT (MAN)	○ #XXX STRUCTURE NUMBER
○ SANITARY SEWER - CLEANOUT (SERVICE)	○ RIGHT OF WAY (RECORD)
○ SANITARY SEWER - MANHOLE	○ CENTERLINE (RECORD)
○ SANITARY SEWER - SCRIBED "S" (SERVICE)	
○ SHRUB	
○ SIGN	
○ STREET LIGHT - STREET LIGHT	
○ STREET LIGHT - ELECTROLUER	
○ STREET LIGHT - PULLBOX	

NO.	DATE	REVISION	BY

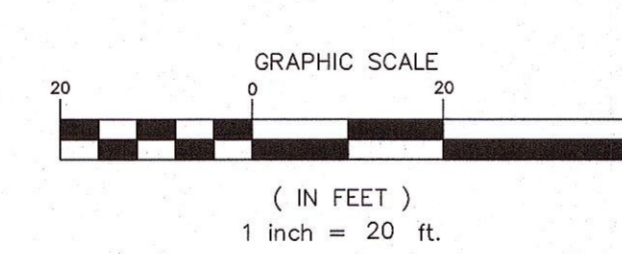
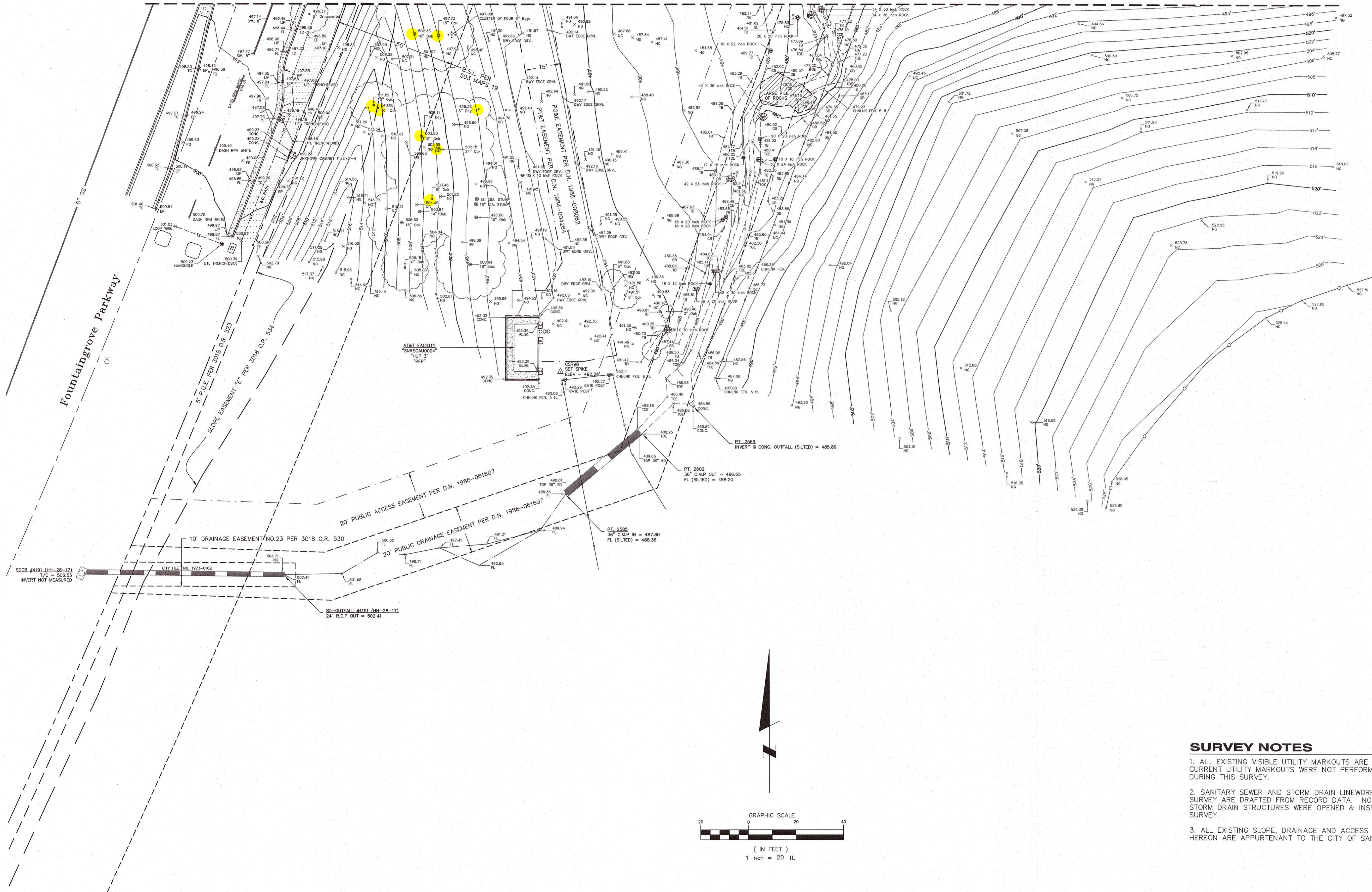
DATE: 10/14/2019
 SCALE: 1" = 20'
 DWN BY: WCO
 CHK BY: MRJ
 THIS MAP REPRESENTS A FIELD SURVEY MADE BY ME OR UNDER MY DIRECTION IN SEPTEMBER 2019.
 Date: 10/18/2019
 BY: Michael R. Jones
 MICHAEL R. JONES, P.L.S. 8090

TOPOGRAPHIC MAP
Permanent Fire Station 5 Rebuild
Fountaingrove Parkway & Stagecoach Road

FIELD BOOK NUMBER: 184-M1
 SHEET: 2 OF 3
 PID NO.: 02184

10/14/2019 12:15 PM \\projects\2019\2019\02184\permanent fire station 5 rebuild\02184 permanent fire station 5 rebuild.dwg

MATCHLINE "B" - SEE SHEET 1



LEGEND (ALL MAY NOT APPLY)	
● FOUND IRON PIPE AS NOTED	○ ELECTRIC - GUY ANCHOR
○ FOUND CENTERLINE MONUMENT, SIZE AS NOTED	-E-E-E- ELECTRIC - MARKOUT
○ FOUND NAIL & TAG, STAMPED AS NOTED	-OH-W- ELECTRIC - OVERHEAD WIRE
▲ SET SURVEY CONTROL POINT AS NOTED	Ⓜ ELECTRIC - METER
⚡ BARRICADE - BOLLARD	Ⓢ ELECTRIC - SURFACE TRANSFORMER
-TV-TV- CABLE TV - MARKOUT	Ⓥ ELECTRIC - VAULT
Ⓢ CABLE TV - PULLBOX	-O-O-O- FENCE - CHAINLINK
Ⓢ CABLE TV - SERVICE RISER	-X-X-X- FENCE - WIRE
Ⓢ ELECTRIC - PULLBOX	-D-D-D- FENCE - WOOD
Ⓢ ELECTRIC - JOINT POLE	Ⓢ FENCE - GATE POST
Ⓢ ELECTRIC - JOINT POLE W/LIGHT	Ⓢ GAS - ANODE
Ⓢ ELECTRIC - JOINT POLE W/RISER	Ⓢ GAS - ETS
Ⓢ ELECTRIC - JOINT POLE W/LIGHT & RISER	-G-G-G- GAS - MARKOUT
	Ⓢ GAS - METER
Ⓢ GAS - VALVE	Ⓢ GAS - VAULT
Ⓢ MAILBOX	Ⓢ ROCK
Ⓢ SANITARY SEWER - CLEANOUT (MAIN)	Ⓢ SANITARY SEWER - CLEANOUT (SERVICE)
Ⓢ SANITARY SEWER - MANHOLE	Ⓢ SANITARY SEWER - MANHOLE
Ⓢ SANITARY SEWER - SCRIBED "S" (SERVICE)	Ⓢ SHRUB
Ⓢ SIGN	Ⓢ STREET LIGHT - STREET LIGHT
Ⓢ STREET LIGHT - ELECTROLUX	Ⓢ STREET LIGHT - MARKOUT
Ⓢ STREET LIGHT - PULLBOX	Ⓢ STREET LIGHT - PULLBOX
Ⓢ STORM DRAIN - CATCH BASIN	Ⓢ STORM DRAIN - DETECTOR LOOP
Ⓢ STORM DRAIN - DROP INLET	Ⓢ STORM DRAIN - MANHOLE
Ⓢ TELEPHONE - MANHOLE	Ⓢ TELEPHONE - MARKOUT
Ⓢ TELEPHONE - MARKOUT	Ⓢ TELEPHONE - PULLBOX
Ⓢ TELEPHONE - SERVICE RISER	Ⓢ TELEPHONE - VAULT
Ⓢ TREE - DECIDUOUS	Ⓢ TREE - EVERGREEN
Ⓢ TREE - PALM	Ⓢ TRUNCATED DOMES
Ⓢ TREE - PALM	Ⓢ UTILITY (UNKNOWN) TRENCH - CENTERLINE
Ⓢ TRAFFIC SIGNAL - CABINET, CONTROL	Ⓢ TRAFFIC SIGNAL - CABINET, SERVICE
Ⓢ TRAFFIC SIGNAL - DETECTOR LOOP	Ⓢ TRAFFIC SIGNAL - INTERCONNECT MARKOUT
Ⓢ TRAFFIC SIGNAL - LOOPWIRE HANDHOLE	Ⓢ TRAFFIC SIGNAL - MARKOUT
Ⓢ TRAFFIC SIGNAL - PEDESTRIAN SIGNAL POLE	Ⓢ TRAFFIC SIGNAL - PULLBOX
Ⓢ TRAFFIC SIGNAL - POLE 1B	Ⓢ TRAFFIC SIGNAL - VAULT
Ⓢ TRAFFIC SIGNAL - POLE W/15' MAST ARM	Ⓢ TRAFFIC SIGNAL - POLE W/20' MAST ARM
Ⓢ TRAFFIC SIGNAL - POLE W/25' MAST ARM	Ⓢ TRAFFIC SIGNAL - POLE W/30' MAST ARM
Ⓢ TRAFFIC SIGNAL - POLE W/40' MAST ARM	Ⓢ TRAFFIC SIGNAL - POLE W/45' MAST ARM
Ⓢ TRAFFIC SIGNAL - POLE W/50' MAST ARM	Ⓢ TRAFFIC SIGNAL - VAULT
Ⓢ WATER - IRRIGATION VALVE	Ⓢ WATER - MARKOUT
Ⓢ WATER - METER	Ⓢ WATER - MONITORING WELL
Ⓢ WATER - POST INDICATOR VALVE	Ⓢ WATER - SPRINKLER HEAD
Ⓢ WATER - VALVE	Ⓢ WATER - VAULT
Ⓢ TWO WAY LEFT	Ⓢ ASPHALT CONCRETE
Ⓢ AG/CONC AGGREGATE CONCRETE	Ⓢ BASE @ FACE
Ⓢ B/F	Ⓢ BACK FLOW PREVENTION VALVE
Ⓢ BFP	Ⓢ BRASS DISK
Ⓢ BLDG BUILDING	Ⓢ BSW BACK OF SIDEWALK
Ⓢ CAB CABINET	Ⓢ C&G CURB AND GUTTER
Ⓢ CB CATCH BASIN	Ⓢ CL CENTERLINE
Ⓢ CSR CITY OF SANTA ROSA	Ⓢ CMP CORRUGATED METAL PIPE
Ⓢ CO CLEANOUT	Ⓢ CONC CONCRETE
Ⓢ C.S.S.C COUNTY SURVEYOR SONOMA COUNTY	Ⓢ DECOD DECIDUOUS
Ⓢ DETECT DETECTOR	Ⓢ DW DASHED WHITE
Ⓢ DI DROP INLET	Ⓢ DWY DRIVEWAY
Ⓢ DM DASHED WHITE	Ⓢ GM GAS METER
Ⓢ DWY DRIVEWAY	Ⓢ DY DASHED YELLOW
Ⓢ EDGE EDGE/CONCRETE BAND	Ⓢ ELEC ELECTRIC
Ⓢ EP EDGE OF PAVEMENT	Ⓢ IRR IRRIGATION
Ⓢ EVGRGN EVERGREEN	Ⓢ F/C FACE OF CURB
Ⓢ FEN FENCE	Ⓢ FDC FIRE DEPARTMENT CONNECT
Ⓢ FG FINISH GRADE	Ⓢ FH FIRE HYDRANT
Ⓢ FL FLOWLINE	Ⓢ FND FOUND
Ⓢ GS GRADE BREAK	Ⓢ GN GAS METER
Ⓢ GV GAS VALVE	Ⓢ GW VALLEY GUTTER
Ⓢ HWL HEADWALL	Ⓢ IC INTERCONNECT
Ⓢ INV INVERT	Ⓢ INV INVERT
Ⓢ IP IRON PIPE	Ⓢ JP JOINT POLE
Ⓢ JBS JUNCTION BOX	Ⓢ LIP LIP OF GUTTER
Ⓢ MH MANHOLE	Ⓢ M/O MARKOUT
Ⓢ M/O MARKOUT	Ⓢ NG NATURAL GROUND
Ⓢ NT NO TAG	Ⓢ OHW OVERHEAD WIRE
Ⓢ ORN ORNAMENTAL TREE	Ⓢ PB PULLBOX
Ⓢ PIV POST INDICATOR VALVE	Ⓢ PVC PVC PIPE
Ⓢ RCP REINFORCED CONCRETE PIPE	Ⓢ RSR RASER
Ⓢ RPM RAISED PAVEMENT MARKER	Ⓢ RR RAILROAD
Ⓢ SL STREET LIGHT	Ⓢ SS SANITARY SEWER
Ⓢ SS SANITARY SEWER	Ⓢ SSMH SANITARY SEWER MANHOLE
Ⓢ S/W SIDEWALK	Ⓢ SWL SOLID WHITE LINE
Ⓢ S/W VALLEY GUTTER	Ⓢ STL SOLID YELLOW LINE
Ⓢ T/W WATER METER	Ⓢ TB TOP OF BANK
Ⓢ WTR WATER	Ⓢ TC TOP OF CURB
Ⓢ WY WATER VALVE	Ⓢ TEL TELEPHONE
Ⓢ Y-Y DOUBLE YELLOW	Ⓢ TOE TOE OF BANK OR SLOPE
Ⓢ UT UTILITY TRENCH	Ⓢ VGT VALLEY GUTTER
Ⓢ VG VALLEY GUTTER	Ⓢ W/M WATER METER
Ⓢ W/M WATER METER	Ⓢ WY WATER VALVE
Ⓢ Y-Y DOUBLE YELLOW	Ⓢ TREE W TREE WELL
Ⓢ #XXX STRUCTURE NUMBER	Ⓢ TS TRAFFIC SIGNAL
Ⓢ RIGHT OF WAY (RECORD)	Ⓢ CENTERLINE (RECORD)

SURVEY NOTES

1. ALL EXISTING VISIBLE UTILITY MARKOUTS ARE SHOWN HEREON. CURRENT UTILITY MARKOUTS WERE NOT PERFORMED PRIOR TO OR DURING THIS SURVEY.
2. SANITARY SEWER AND STORM DRAIN LINEWORK SHOWN ON THIS SURVEY ARE DRAFTED FROM RECORD DATA. NO SANITARY SEWER OR STORM DRAIN STRUCTURES WERE OPENED & INSPECTED DURING THIS SURVEY.
3. ALL EXISTING SLOPE, DRAINAGE AND ACCESS EASEMENTS SHOWN HEREON ARE APPURTENANT TO THE CITY OF SANTA ROSA.



City of Santa Rosa

NO.	DATE	REVISION	BY

DATE: 10/14/2019
 CHK BY: MRJ
 THIS MAP REPRESENTS A FIELD SURVEY MADE BY ME OR UNDER MY DIRECTION IN SEPTEMBER 2019.
 By *Michael R. Jones* Date: 10/14/2019
 MICHAEL R. JONES, P.L.S. 8090

TOPOGRAPHIC MAP
Permanent Fire Station 5 Rebuild
Fountaingrove Parkway & Stagecoach Road

FIELD BOOK NUMBER
 184-M1
 SHEET: 3 OF 3
 PID NO.: 02184

10/18/2019 12:28 PM \\projects\2019_3318\02184 permanent fire station 5 rebuild\02-cod.dwg\02184 permanent fire station 5 rebuild.dwg