



**Notice to Intent to Adopt a Mitigated Negative Declaration
for the
Etiwanda Intervalley Water Quality and Water Resiliency Project
Cities of Jurupa Valley, Fontana, Rancho Cucamonga, and San Bernardino County**

NOTICE IS HEREBY GIVEN that the Jurupa Community Services District (hereinafter "JCSD") has completed an Initial Study for the Etiwanda Intervalley Water Quality and Water Resiliency Project (Resiliency Project) in accordance with the California Environmental Quality Act (CEQA), and will act as the Lead Agency. The Resiliency Project is a collaborative effort between JCSD and the Cucamonga Valley Water District (CVWD) to develop water supply and conveyance project that will benefit both JCSD and CVWD. The Initial Study was prepared to assess at a program level, the potential for any significant environmental effects associated with the Resiliency Project and to assess at a project-level, impacts resulting from the construction and operation of the Etiwanda Pipeline, which is a Resiliency Project component. The Resiliency Project and Etiwanda Pipeline are collectively referred to as the Project. Based on the analysis in the Initial Study, it has been determined that all Project-related environmental impacts will be reduced to a level that is less than significant with the incorporation of mitigation measures. Accordingly, a Mitigated Negative Declaration will meet the requirements of CEQA.

The Resiliency Project components include the Etiwanda Pipeline, storage reservoir(s), pressure reducing/flow control station(s), upgrades to existing pumping facilities, new water wells, upgrade/expansion of either CVWD's Lloyd Michaels Water Treatment Plant (LMWTP) or Royer Nesbitt Water Treatment Plant (RNWTP), groundwater treatment of existing JCSD groundwater wells, and hydroelectric generating facilities. Resiliency Project components would be located in the city of Jurupa Valley, in Riverside County, and the cities of Fontana and Rancho Cucamonga and unincorporated territory in San Bernardino County (refer to **Figure 1 – Regional Vicinity Map, Figure 2 – District Boundaries, and Figure 3 – Potential Well Sites**).

The Etiwanda Valley Water Resiliency Project (Resiliency Project) is a collaborative effort between the Jurupa Community Services District (JCSD) and the Cucamonga Valley Water District (CVWD) to develop a domestic water supply and conveyance project that will benefit both Districts by increasing water supply, improving water quality, enhancing infrastructure resiliency, and promoting sustainability. By working together, both Districts will benefit financially and operationally due to facilities that can be utilized by either or both Districts depending on needs and availability of the various water supplies.

The Initial Study evaluated the Recommended Alignment (**Figure 4 – Etiwanda Pipeline (Recommended Alignment)**) and six alternate alignments for the Etiwanda Pipeline. (**Figure 5 – Pipeline Alternatives**).

The Recommended Alignment for the Etiwanda Pipeline would be an approximately 70,420 linear feet 36-inch and 20-inch diameter welded steel transmission pipeline located within or along Country Village Road, Mulberry Avenue, Slover Avenue, Calabash Avenue, San Bernardino Avenue, Fourth Street, within San Bernardino County Flood Control right-of-way along San Sevaine Channel, Arrow Route, Etiwanda Avenue, Highland Avenue, Day Creek Boulevard, Coyote Drive to the LMWTP. If the Etiwanda Pipeline connects to the RNWTP, the Etiwanda Pipeline would also be located within or along Highland Avenue and Wilson Avenue. Trenchless construction techniques will be used where the Etiwanda Pipeline crosses the Riverside County Flood Control and Water Conservation District's Declaz Channel at Country Village Road, Interstate 10 and the Union Pacific Railroad at Calabash Avenue, and the San Sevaine Channel at Etiwanda Avenue. The Etiwanda Pipeline will be constructed in three phases.

Alternative A is approximately 57,550 LF in length. Alternative A traverses north in Country Village Road from JCSD's existing 30-inch diameter pipeline to Philadelphia Avenue, west in Philadelphia Avenue to Etiwanda Avenue, north in Etiwanda Avenue (crossing UPRR, I-10, I-15, and SR-60) to the LMWTP.)

Alternative B is approximately 60,310 LF in length. Alternative B traverses north in Country Village Road (which becomes Mulberry Avenue in San Bernardino County) from JCSD's existing 30-inch diameter pipeline to Slover Avenue, west in Slover Avenue to Etiwanda Avenue, north in Etiwanda Avenue (crossing I-10, UPRR, I-15, and SR-60) to the LMWTP.

Alternative C is approximately 63,990 LF in length. Alternative C traverses north in Country Village Road (which becomes Mulberry Avenue in San Bernardino County) from JCSD's existing 30-inch diameter pipeline to Slover Avenue, east in Slover Avenue to Calabash Avenue, north in Calabash Avenue to Valley Boulevard, west along Valley Boulevard to Etiwanda Avenue, north in Etiwanda Avenue (crossing I-15 and SR-210) to the LMWTP.

Alternative D is approximately 63,320 LF in length. Alternative D traverses north in Country Village Road (which becomes Mulberry Avenue in San Bernardino County) from JCSD's existing 30-inch diameter pipeline to Slover Avenue, west in Slover Avenue to East Avenue, north in East Avenue (crossing I-10 and UPRR) to Valley Boulevard, west in Valley Boulevard to Etiwanda Avenue, north in Etiwanda Avenue (crossing I-15 and SR-210) to the LMWTP.

Pursuant to *CEQA Guidelines* Section 15087(c)(6), no hazardous material waste sites are located within the Project area as reviewed by this Initial Study Mitigated Negative Declaration.

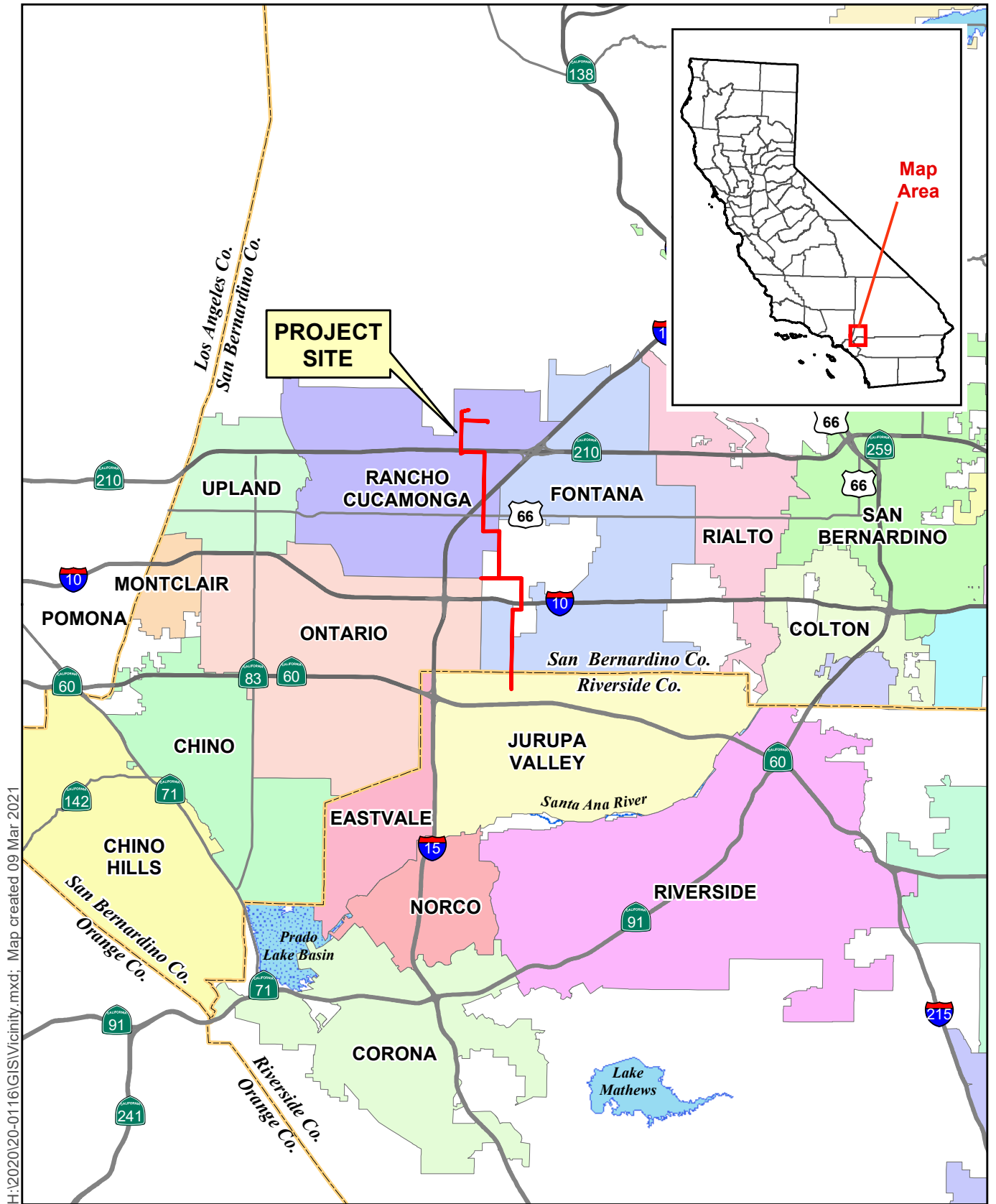
Copies of the Initial Study and the proposed Mitigated Negative Declaration are available for public review at the JCSD's office located at 11201 Harrel Street, Jurupa Valley, California 91752, and at the CVWD's office located at 10440 Ashford Street, Rancho Cucamonga, CA 91730. All documents referenced in the Initial Study are available for public review at those locations identified in the Initial Study.

In accordance with Section 15072(a) of the State CEQA Guidelines, this Public Notice is to officially notify the general public, public agencies, and landowners that a 30-day public review period will begin on October 22, 2021. Any comments on the proposed Initial Study and Mitigated Negative Declaration or requests for information should be sent to:

**Jurupa Community Services District
Attn: Keith Backus
Engineer Services Supervisor
11201 Harrel Street
Jurupa Valley, CA 91752
KBackus@jcsd.us**

Written comments must be received at the above address **by November 22, 2021**. Any written comments received will be forwarded to the District's Board of Directors and will be considered before the Mitigated Negative Declaration is approved for adoption. A public hearing of JCSD's Board of Directors to take action on the Initial Study and Mitigated Negative Declaration will be held at 7:00 p.m. on December 13, 2021 at the District's Boardroom located at 11201 Harrel Street, Jurupa Valley, CA 91752.

Questions or request for electronic copies of the Initial Study and Mitigated Negative Declaration should be directed to Keith Backus at the address provided above, by phone at (951) 685-7434, or by e-mail at KBackus@jcsd.us.

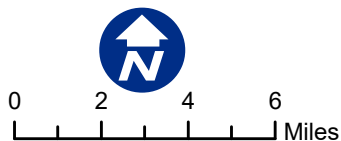


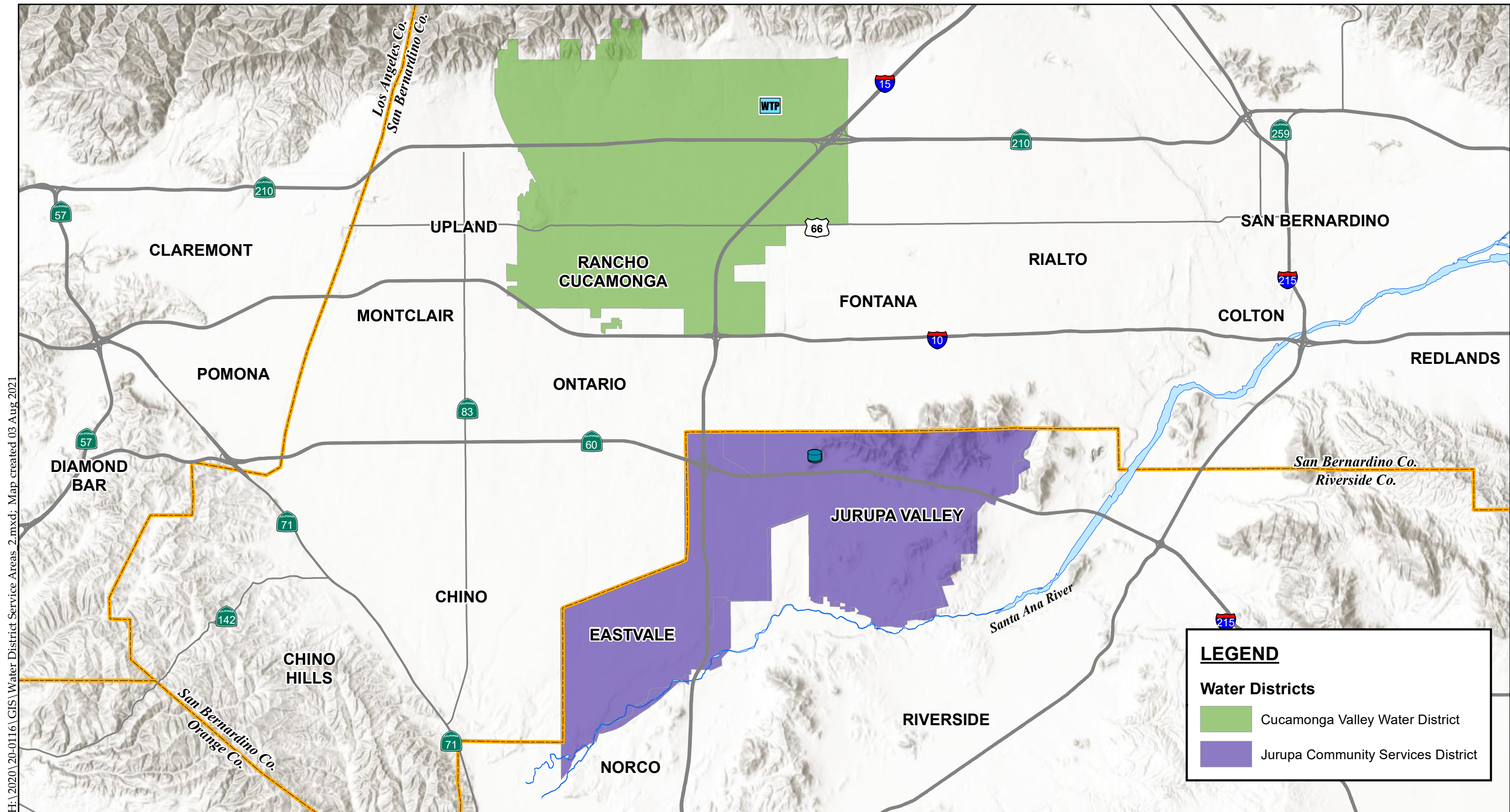
H:\2020\20-0116\GIS\Vicinity.mxd; Map created 09 Mar 2021

Sources: San Bernandino Co. GIMS, 2021;
Riverside County GIS, 2021

Figure 1 - Regional Vicinity Map

Etiwanda Intervalley Water Quality and Water Resiliency Project





H:\2020\20-01116\GIS\Water District Service Areas 2.mxd; Map created 03 Aug 2021

Sources: Riverside Co. GIS, 2019; San Bernardino USDA NAIP, 2020

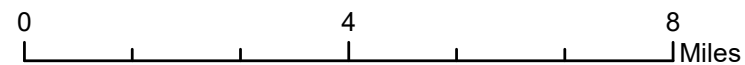
LEGEND

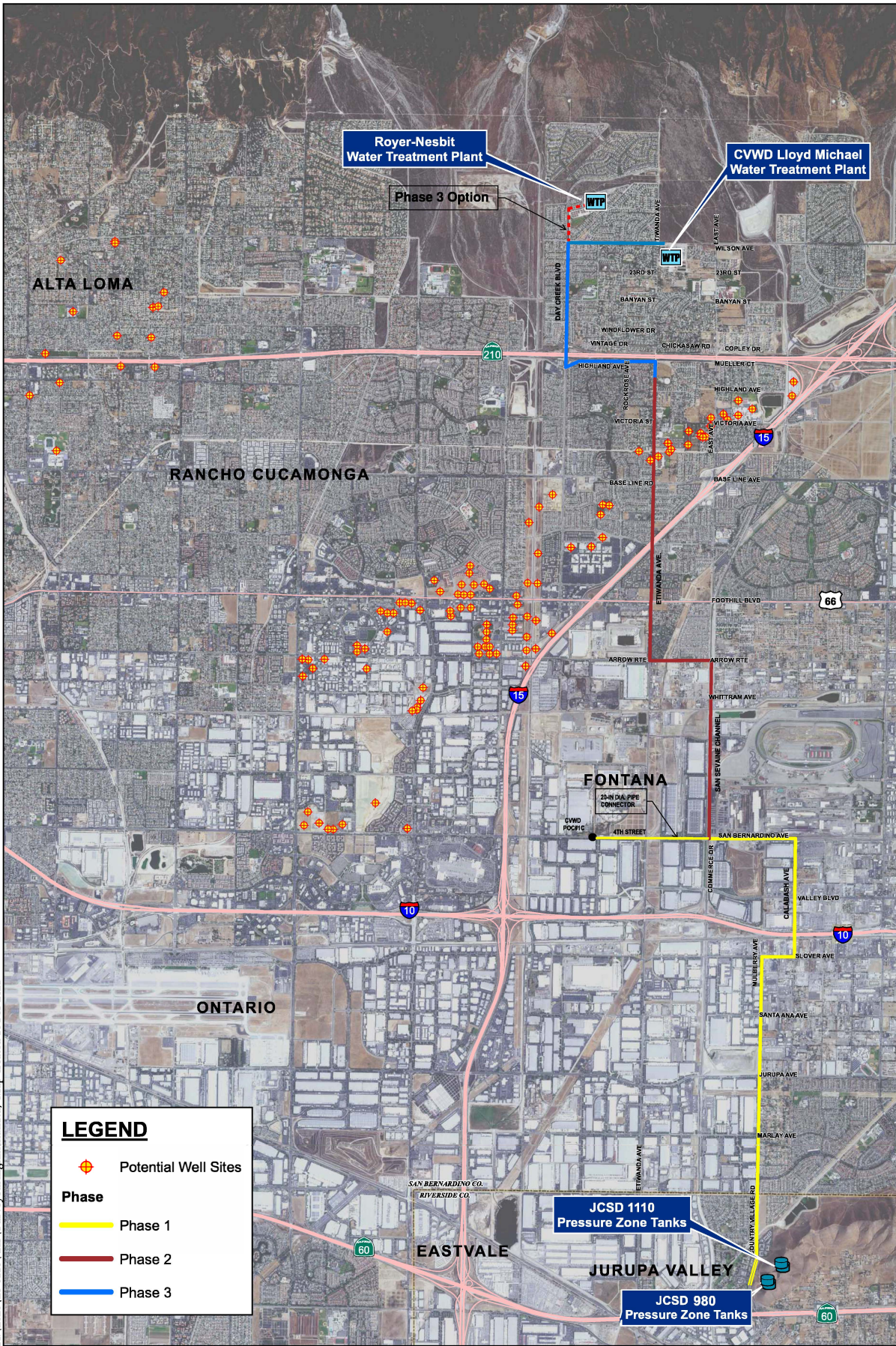
Water Districts

- Cucamonga Valley Water District
- Jurupa Community Services District

Figure 2 - District Boundaries

Etiwanda Intervalley Water Quality and Water Resiliency Project





H:\2020\20-0116\GIS\Surveyed\Alignment.mxd; Map created 10 Feb 2021

LEGEND

- ◆ Potential Well Sites

Phase

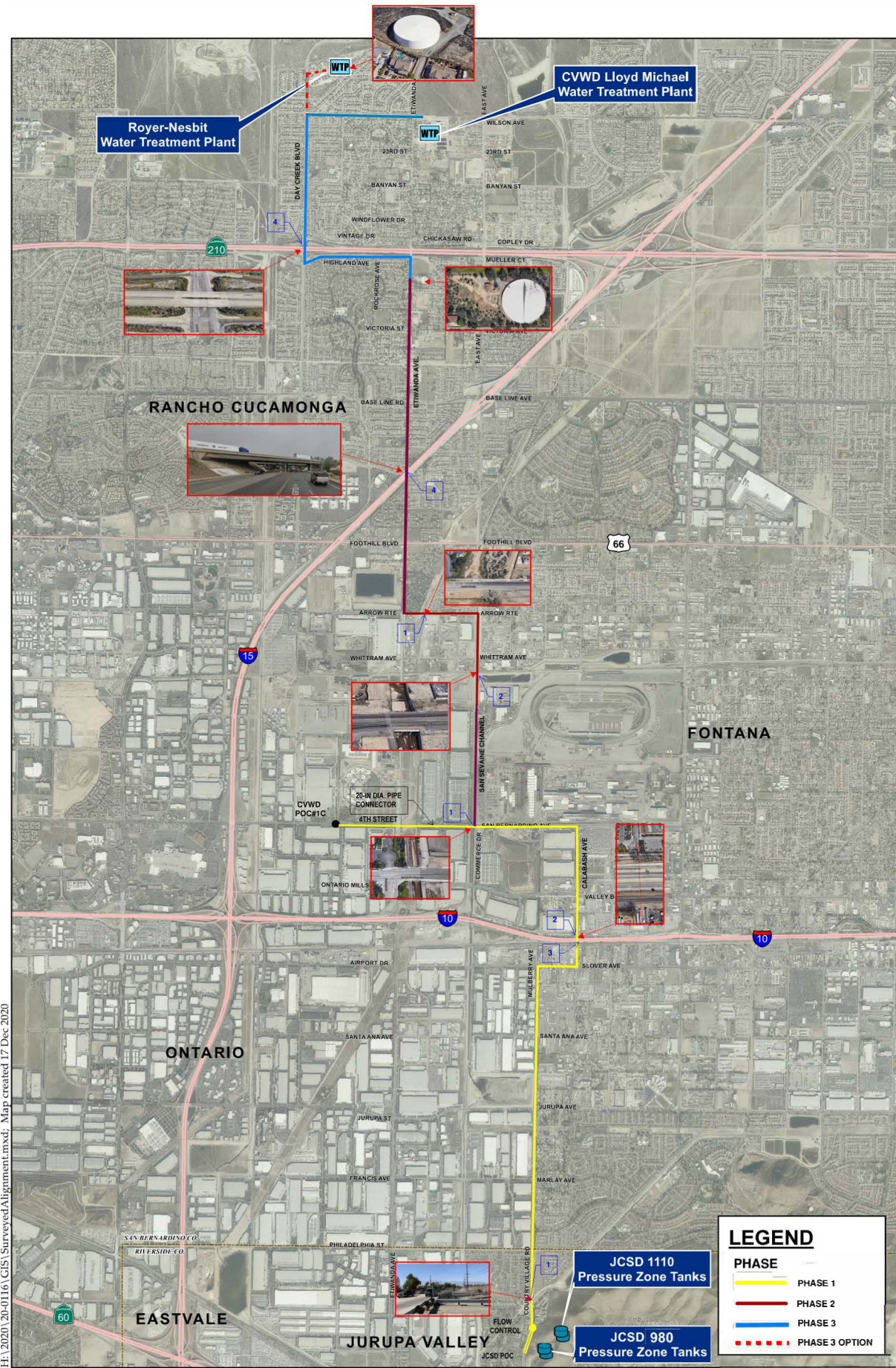
- Phase 1
- Phase 2
- Phase 3

Sources: Riverside Co. GIS, 2020; USDA NAIP, 2018.



0 0.5 1 1.5 Miles

Figure 3 - Potential Well Sites
Etiwanda Intervalley Water Quality and Water Resiliency Project



H:\2020\20-0116\GIS\Surveyed\Alignment.mxd; Map created 17 Dec 2020

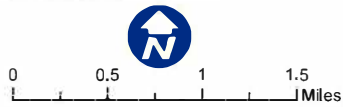
Sources: Riverside Co. GIS, 2020; USDA NAIP, 2016.

Figure 4 - Etiwanda Pipeline (Recommended Alignment)
Etiwanda Intervalley Water Quality and Water Resiliency Project

LEGEND

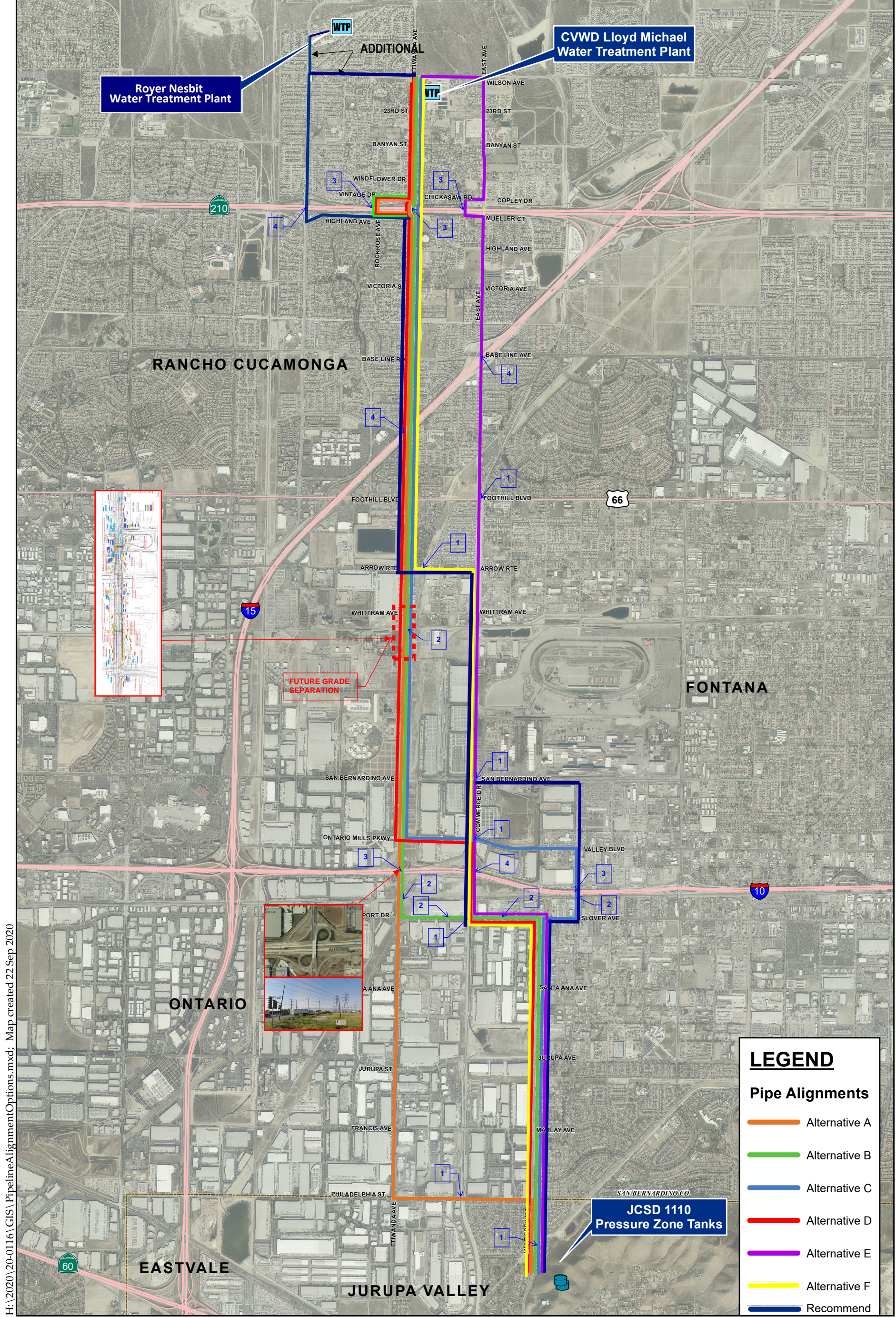
PHASE

- PHASE 1
- PHASE 2
- PHASE 3
- - - PHASE 3 OPTION



- 1 - CHANNEL/DRAINAGE CROSSING
- 2 - RAILROAD CROSSING
- 3 - FREEWAY CROSSING
- 4 - OVERPASS CROSSING





H:\2020\20-0116\GIS\PipelineAlignmentOptions.mxd; Map created 22 Sep 2020

Sources: Riverside Co. GIS, 2020; USDA NAIP, 2016.

- 1 - CHANNEL CROSSING
- 2 - RAILROAD CROSSING
- 3 - FREEWAY CROSSING
- 4 - OVERPASS CROSSING

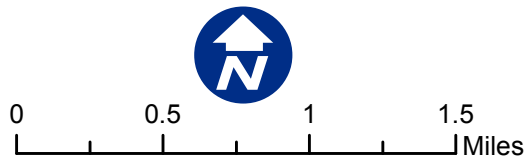


Figure 5 - Pipeline Alternatives
Etiwanda Intervalley Water Quality and Water Resiliency Project

