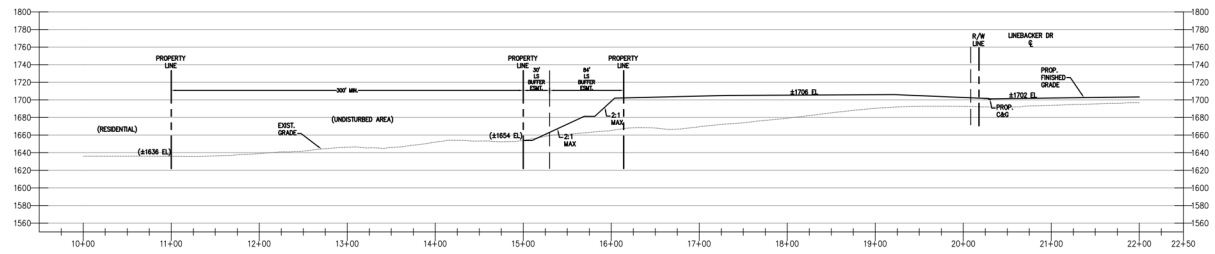


# Appendix B

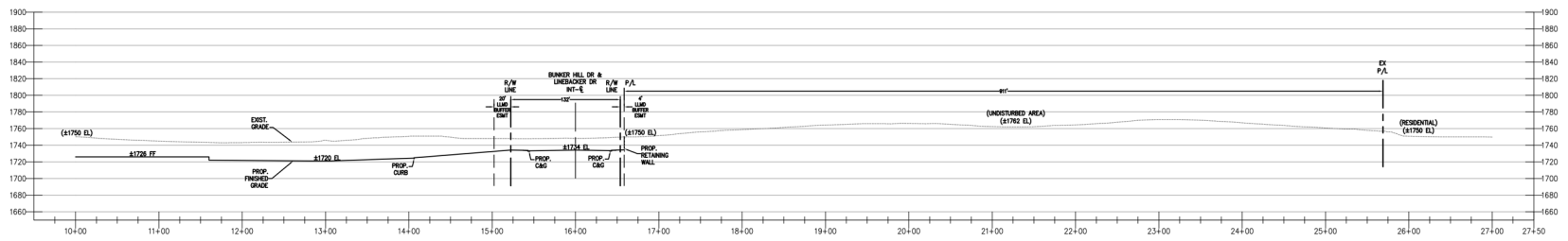
---

## Aesthetics

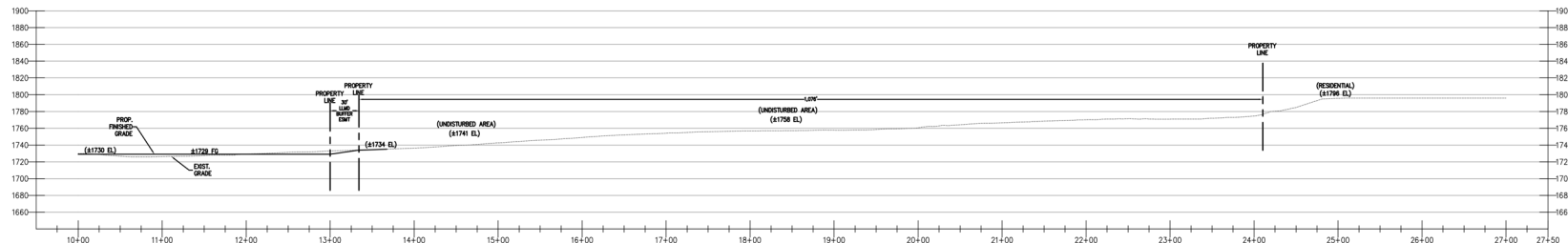




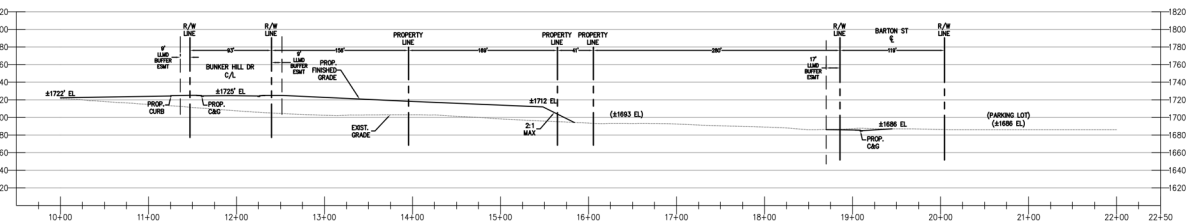
**SECTION M**  
HORIZ./VERT. SCALE: 1" = 80'



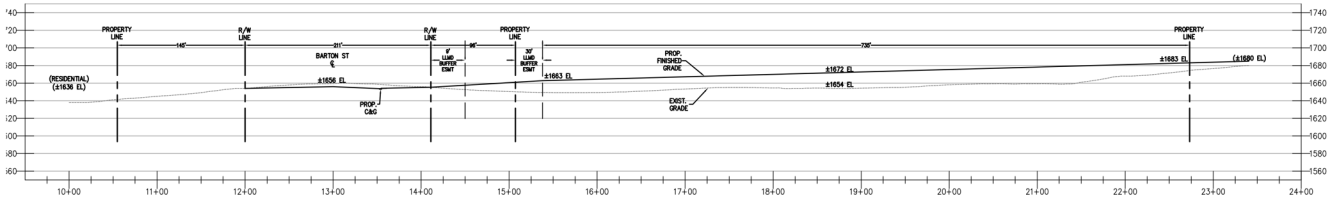
**SECTION N**  
HORIZ./VERT. SCALE: 1" = 80'



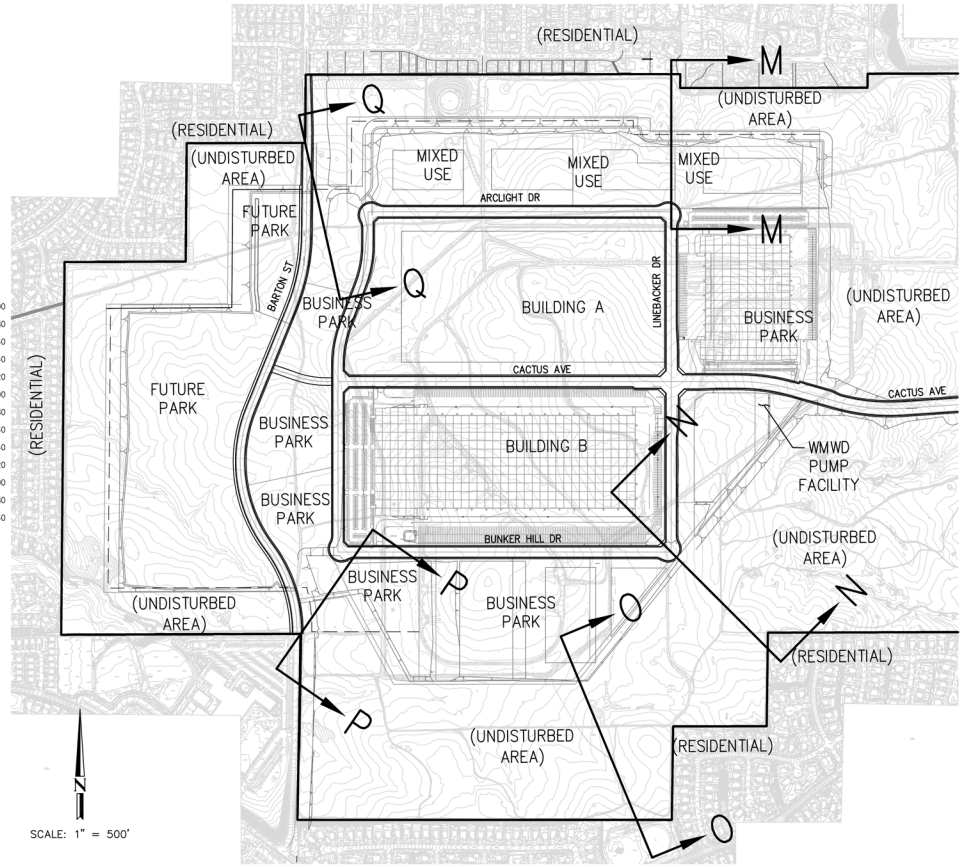
**SECTION O**  
HORIZ./VERT. SCALE: 1" = 80'



**SECTION P**  
HORIZ./VERT. SCALE: 1" = 80'



**SECTION Q**  
HORIZ./VERT. SCALE: 1" = 80'



NO.	REVISION	DATE

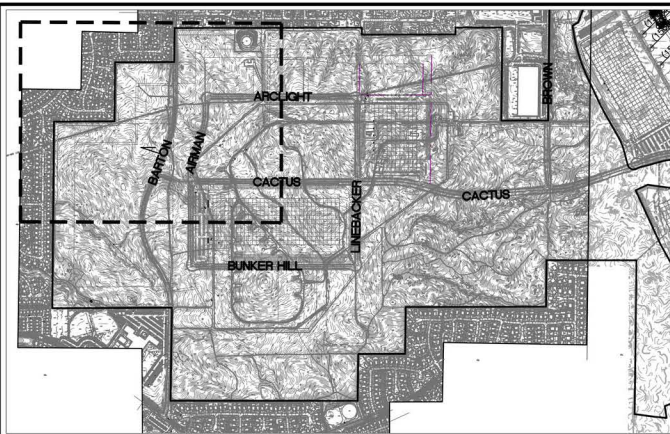
**PROJECT:** MERIDIAN UPPER PLATEAU  
RIVERSIDE COUNTY, CA

**DRAWING NAME:** SIGHT LINE SECTION

ISSUE:	EXHIBIT
DATE:	8/25/2022
CHECKED: CM	DRAWN: HM
DRAWING FILE:	
PROJECT NO.:	20-780
SHEET NUMBER:	1
OF	1 SHEETS
SCALE:	1" = 80'

NOT FOR CONSTRUCTION





**SHEET INDEX**  
SCALE: 1" = 1000'

**LLMD REQUIREMENTS:**

- PRIOR TO SITE GRADING THE GRADING CONTRACTOR SHALL CONTACT THE MARCH JPA LANDSCAPE AND LIGHTING MAINTENANCE DISTRICT (LLMD) MANAGER AT (951) 656-7000 TO COORDINATE ALL ACTIVITY AND IMPACTS UPON LLMD FACILITIES WITHIN THE PUBLIC RIGHT OF WAY AND LANDSCAPE EASEMENTS. THE COORDINATION SHALL ASSURE UNINTERRUPTED OPERATION OF THE LLMD IRRIGATION SYSTEM AND SHALL IDENTIFY ANY IMPACTS ON LLMD MAINLINES, WIRES, LATERALS AND IRRIGATION COMPONENTS, INCLUSIVE OF THE NEED TO MOVE OR SLEEVE LLMD FACILITIES AS DETERMINED BY THE LLMD MANAGER.
- ALL LLMD PRESSURE MAIN LINE AND LATERAL CROSSINGS BENEATH PAVED AREAS SHALL BE ENCASED IN SCHEDULE 40 PVC SLEEVES TWICE THE DIAMETER OF THE PIPE. SLEEVES SHALL BE PLACED AT A DEPTH OF 24" BENEATH FINISHED SURFACE, MEASURED FROM THE TOP OF THE SLEEVE. CONTROL WIRES SHALL BE SEPARATE SLEEVES WITH A MINIMUM DIAMETER OF 2". WIRE SLEEVES SHALL BE SIZED SO THAT WIRE BUNDLES MAY BE PULLED WITHOUT BINDING. ON EACH SIDE OF PAVED AREAS A 10" ROUND VALVE BOX WITH WIRE CONNECTIONS SHALL BE INSTALLED. PAI TE CONNECTORS SHALL BE USED IN WIRE CONNECTION BOX AND MUST BE BRANDED ON THE VALVE BOX LID WITH "SW" FOR FUTURE IDENTIFICATION.
- ALL CHANGES TO THE LLMD EASEMENT AREA SHALL BE COMPLETED IN ACCORDANCE WITH THE APPROVED LLMD LANDSCAPE PLANS AND AN "AS BUILT" DRAWING SHALL BE SUBMITTED AND APPROVED UPON COMPLETION AND INSPECTION OF THE WORK. ALL REPAIRS AND/OR INSTALLATIONS IN THE LLMD RIGHT OF WAY AND EASEMENT AREAS MUST BE INSPECTED BY THE LLMD MANAGER.
- ALL LLMD IRRIGATION DAMAGED BY CONSTRUCTION ACTIVITIES SHALL BE REPAIRED BY A QUALIFIED IRRIGATION TECHNICIAN WITHIN TWENTY FOUR (24) HOURS TO ENSURE LLMD PLANT MATERIAL DOES NOT INCUR ADDITIONAL DAMAGE OR LOSS OR A \$500 FINE PER DAY WILL BE ASSESSED UNTIL COMPLETED. ALTERNATIVELY THE M/JPA CAN HAVE THEIR LLMD CONTRACTOR REPAIR ANY DAMAGE AND BILL THE OWNER DIRECTLY AT THE REQUEST OF THE OWNER.
- ALL LLMD PLANT MATERIAL DAMAGED SHALL BE REPLACED WITH LIKE SIZED MATERIAL WITHIN THREE (3) BUSINESS DAYS UNLESS AN EXTENSION IS APPROVED IN WRITING BY THE LLMD MANAGER.
- AT NO TIME SHALL ANY CONTRACTOR STORE OR PLACE EQUIPMENT, SIGNS, TEMPORARY UTILITIES OR ANY OTHER ITEMS WITHIN THE PUBLIC RIGHT OF WAY OR LLMD LANDSCAPE EASEMENT AREAS.
- NO CONTRACTOR PARKING WILL BE ALLOWED ON THE M/JPA STREETS AT ANY TIME DURING CONSTRUCTION.
- NO CONSTRUCTION PERSONNEL OR SUBCONTRACTORS MAY CONDUCT THEIR BREAK TIME IN THE LLMD AREA. COST FOR DAMAGES WILL APPLY AS PER COA 69.
- NO CERTIFICATE OF OCCUPANCY WILL BE ISSUED UNTIL ALL LLMD IRRIGATION AND/OR PLANTINGS ARE RESTORED IN-KIND AND TO THE SATISFACTION OF THE M/JPA OPERATIONS DIRECTOR AND ANY OUTSTANDING FINES ARE PAID IN FULL.
- PRIOR TO ANY WALL AND FENCE CONSTRUCTION OR ENCRoACHMENT INTO THE LLMD THE M/JPA MUST BE NOTIFIED FOR LLMD PRE-INSPECTION AND SCHEDULE OF WORK.



SEE SHEET 3

SEE SHEET 2

160 S. Old Springs Road  
Suite 210  
Anaheim Hills, CA 92808  
714-685-6860

**ILORC**  
Civil Engineering/Land Surveying/Land Planning

NO.	REVISION	DATE

**PROJECT:** MERIDIAN - UPPER PLATEAU  
**COUNTY OF RIVERSIDE, CALIFORNIA**  
**CONCEPTUAL GRADING**

**DRAWING NAME:**

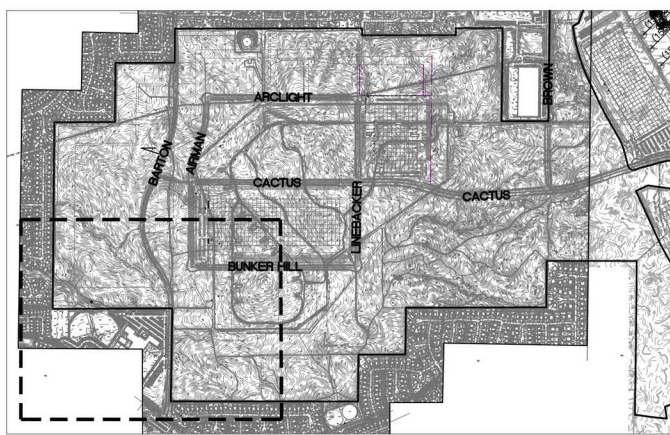
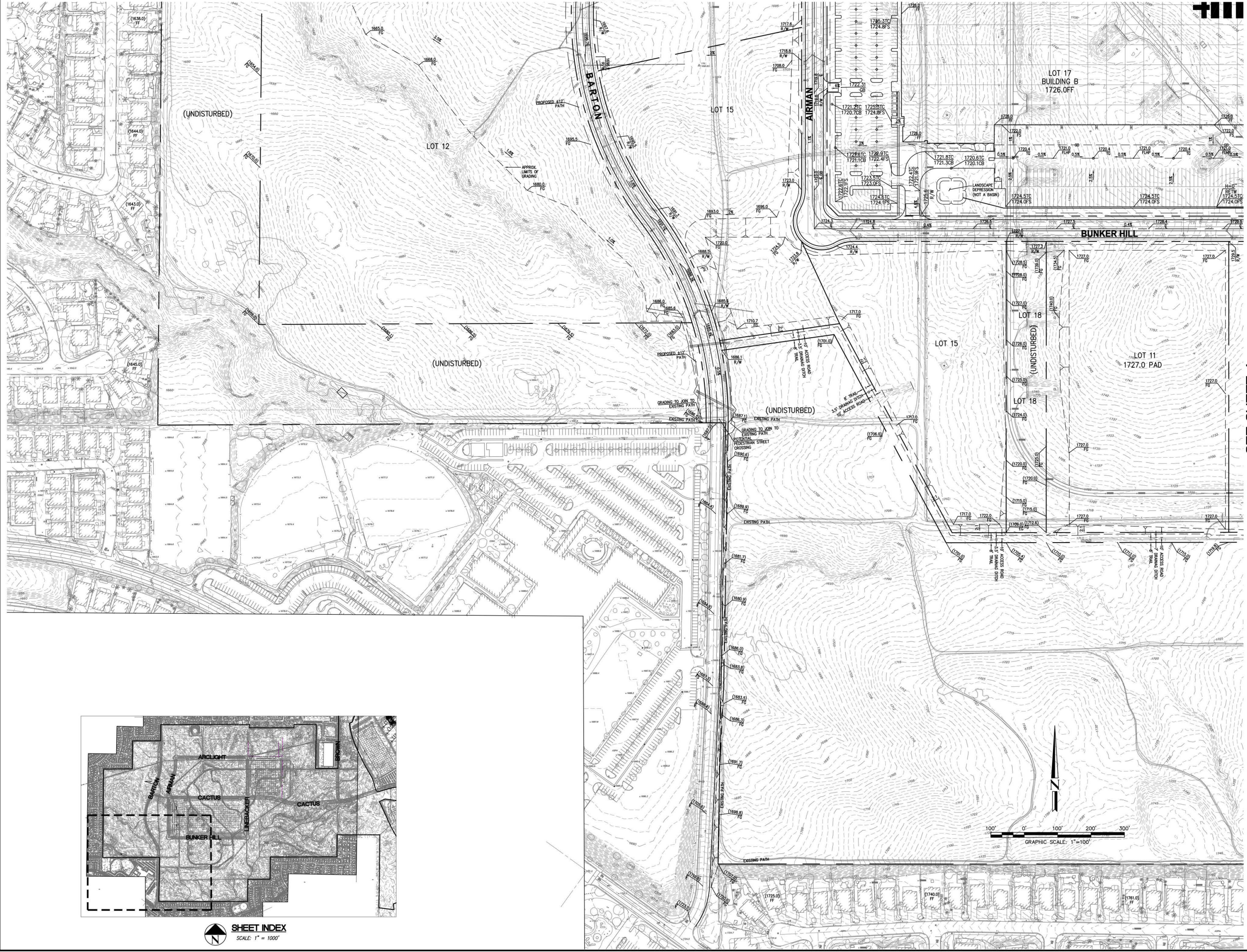
**ISSUE:** CONCEPTUAL  
**DATE:** 2022-10-12  
**CHECKED:** CM DRAWN:HM  
**DRAWING FILE:**  
**PROJECT NO.:** 20-760  
**SHEET NUMBER:**  
**1**  
**OF 4 SHEETS**  
**SCALE:** AS SHOWN

FILENAME: M:\2022\20-760 Meridian Upper Plateau\2076003.dwg, LAST SAVED: ON: Oct 12, 2022 10:51am, CPO

NOT FOR CONSTRUCTION



SEE SHEET 1



**SHEET INDEX**  
SCALE: 1" = 1000'

SEE SHEET 4

160 S. Old Springs Road  
Suite 210  
Anaheim Hills, CA 92808  
**JORC**  
Civil Engineering/Land Surveying/Land Planning

NO.	REVISION	DATE

PROJECT: **MERIDIAN - UPPER PLATEAU**  
 COUNTY OF RIVERSIDE, CALIFORNIA  
**CONCEPTUAL GRADING**

DRAWING NAME:

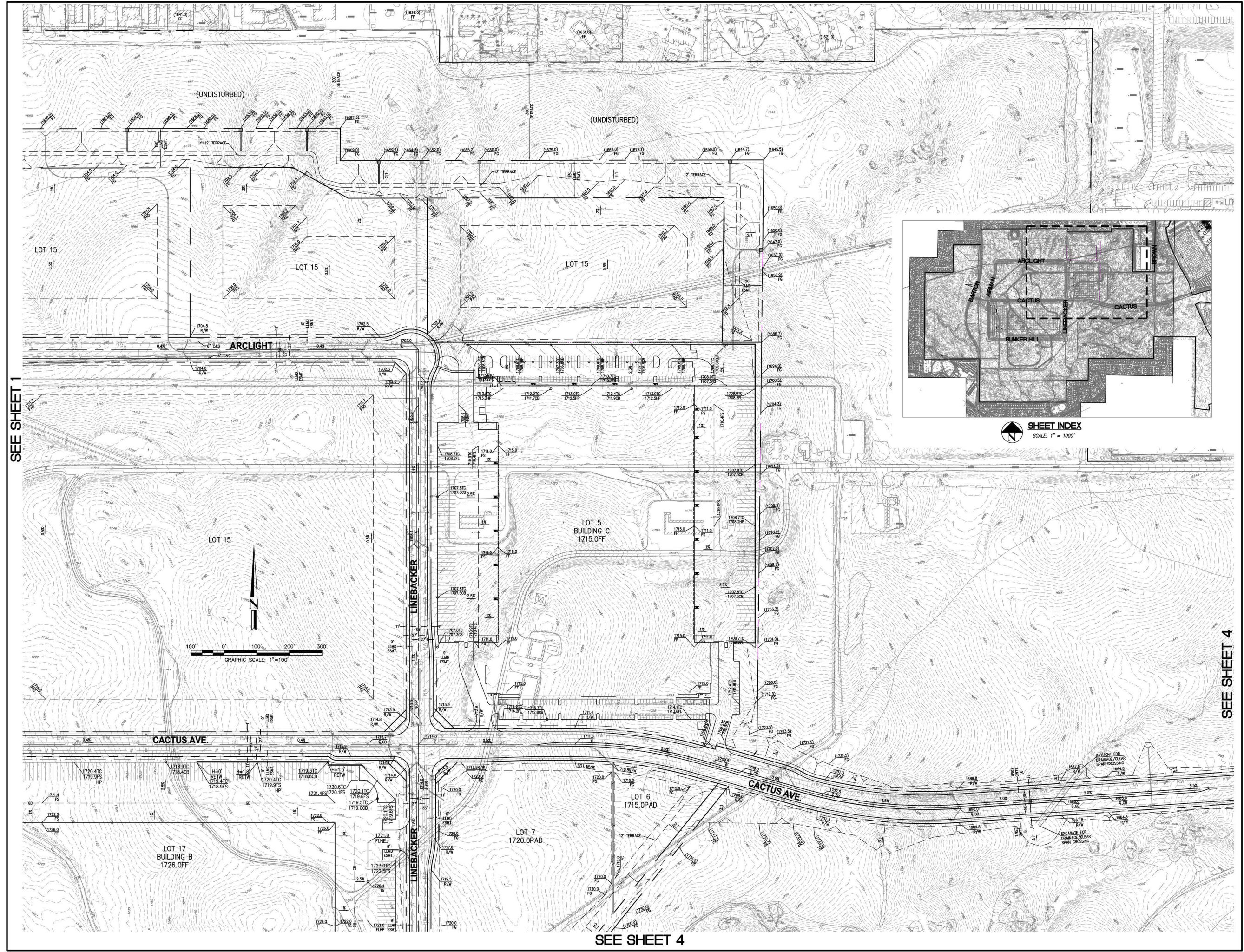
ISSUE: CONCEPTUAL  
 DATE: 2022-10-12  
 CHECKED: CM DRAWN:HM  
 DRAWING FILE:  
 PROJECT NO.: **20-750**  
 SHEET NUMBER:  
**2**  
 OF 4 SHEETS  
 SCALE: AS SHOWN

FILENAME: M:\2022\20-750 Meridian Upper Plateau\2075000.dwg, LAST SAVED: DN: Oct 10 2022 5:03pm PLOTTED BY: CHRIS, DN: Oct 12 2022 11:00am, GFC

NOT FOR CONSTRUCTION



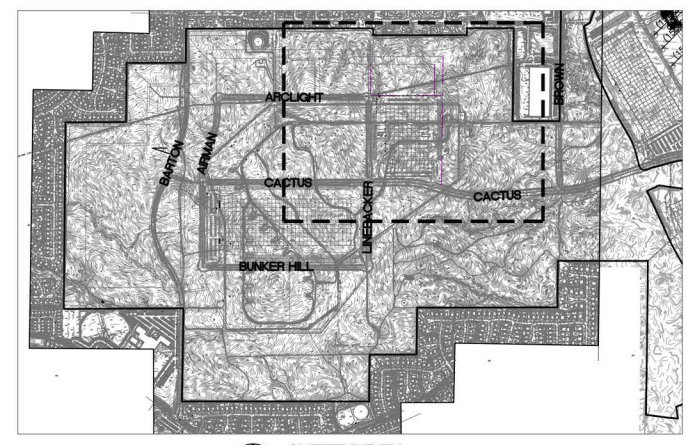




SEE SHEET 1

SEE SHEET 4

SEE SHEET 4



SHEET INDEX  
SCALE: 1" = 1000'

160 S. Old Springs Road  
Suite 210  
Anaheim Hills, CA 92808  
714-685-6860

**JORC**  
Civil Engineering/Land Surveying/Land Planning

NO.	REVISION	DATE

PROJECT: **MERIDIAN - UPPER PLATEAU**  
COUNTY OF RIVERSIDE, CALIFORNIA  
DRAWING NAME: **CONCEPTUAL GRADING**

ISSUE: CONCEPTUAL  
DATE: 2022-10-12  
CHECKED: CM DRANN:HM  
DRAWING FILE:  
PROJECT NO.: **20-780**  
SHEET NUMBER:  
**3**  
OF 4 SHEETS  
SCALE: AS SHOWN

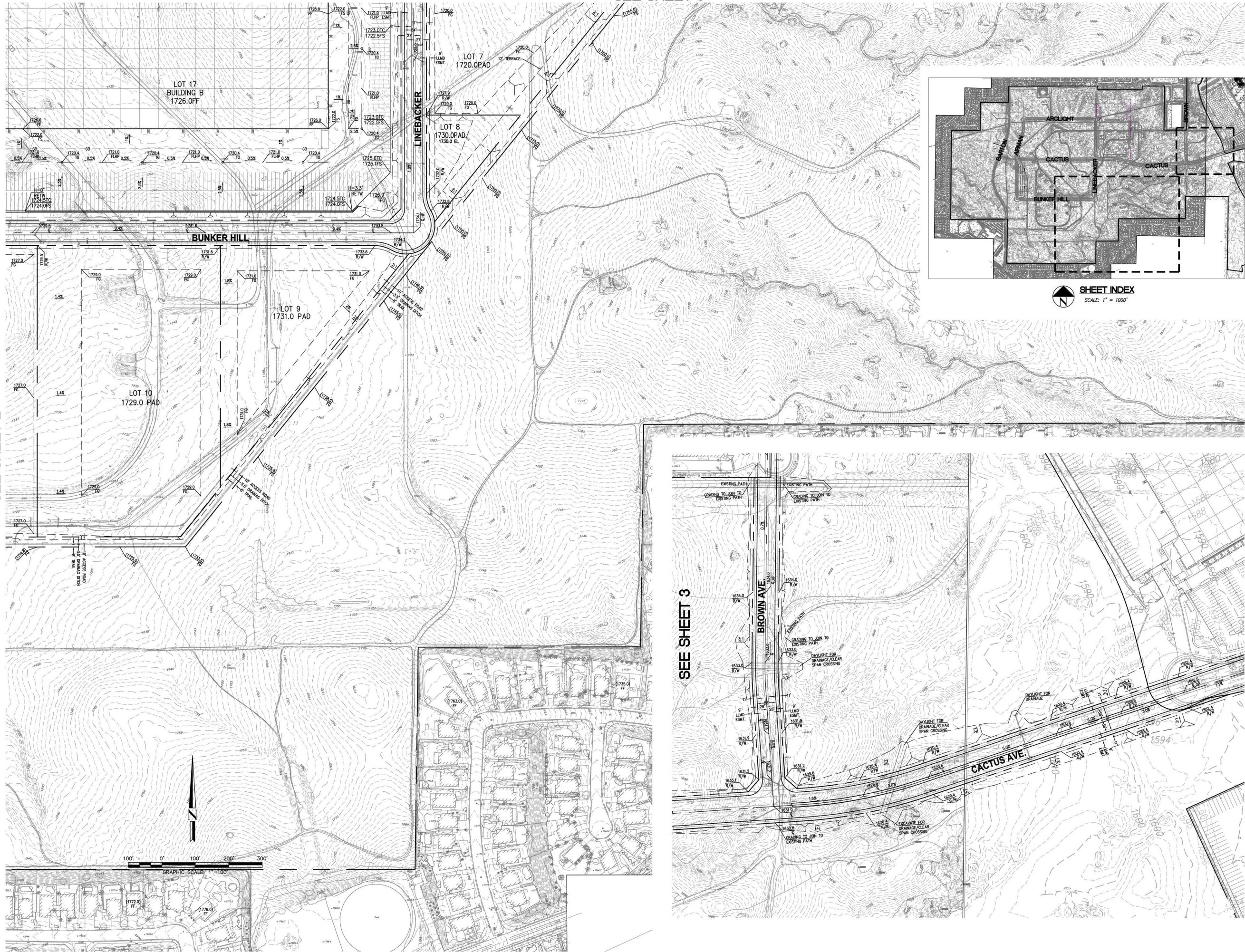
FILENAME: M:\2022\20-780 Meridian Upper Plateau\2078003.dwg, LAST SAVED ON: Oct 12, 2022 5:03pm, PLOTTED BY: CHRIS, DN: Oct 12, 2022 11:09am, CPO:

NOT FOR CONSTRUCTION



SEE SHEET 3

SEE SHEET 2



SEE SHEET 3

160 S. Old Springs Road  
 Suite 210  
 Anaheim Hills, CA 92808  
 714-685-6860

**DRRC**  
 Civil Engineering/Land Surveying/Land Planning

NO.	REVISION	DATE

PROJECT: **MERIDIAN - UPPER PLATEAU**  
 COUNTY OF RIVERSIDE, CALIFORNIA  
 DRAWING NAME: **CONCEPTUAL GRADING**

ISSUE: CONCEPTUAL  
 DATE: 2022-10-12  
 CHECKED: CM DRAWN:HM  
 DRAWING FILE:  
 PROJECT NO.: **20-760**  
 SHEET NUMBER:  
**4**  
 OF 4 SHEETS  
 SCALE: AS SHOWN

FILENAME: M:\2022\20-760 Meridian Upper Plateau\2075503.dwg, LAST SAVED ON: Oct 10 2022 5:03pm, PLOTTED BY: CHRIS, ON: Oct 12 2022 11:46am, GFC

NOT FOR CONSTRUCTION



# Meridian Upper Plateau Community Park

Riverside, CA

## Lighting System

Pole / Fixture Summary						
Pole ID	Pole Height	Mtg Height	Fixture Qty	Luminaire Type	Load	Circuit
S1, S4	70'	70'	4	TLC-LED-1200	4.68 kW	A
		70'	2	TLC-LED-900	1.78 kW	A
S2, S5	70'	70'	4	TLC-LED-1200	4.68 kW	A
		70'	4	TLC-LED-1200	4.68 kW	B
		70'	2	TLC-LED-900	1.78 kW	A
		70'	2	TLC-LED-900	1.78 kW	B
S3, S6	70'	70'	4	TLC-LED-1200	4.68 kW	B
		70'	2	TLC-LED-900	1.78 kW	B
S7, S10	70'	70'	4	TLC-LED-1200	4.68 kW	C
		70'	2	TLC-LED-900	1.78 kW	C
S8, S11	70'	70'	4	TLC-LED-1200	4.68 kW	C
		70'	4	TLC-LED-1200	4.68 kW	D
		70'	2	TLC-LED-900	1.78 kW	C
		70'	2	TLC-LED-900	1.78 kW	D
S9, S12	70'	70'	4	TLC-LED-1200	4.68 kW	D
		70'	2	TLC-LED-900	1.78 kW	D
S13, S16	70'	70'	4	TLC-LED-1200	4.68 kW	E
		70'	2	TLC-LED-900	1.78 kW	E
S14, S17	70'	70'	4	TLC-LED-1200	4.68 kW	E
		70'	4	TLC-LED-1200	4.68 kW	F
		70'	2	TLC-LED-900	1.78 kW	E
		70'	2	TLC-LED-900	1.78 kW	F
S15, S18	70'	70'	4	TLC-LED-1200	4.68 kW	F
		70'	2	TLC-LED-900	1.78 kW	F
<b>18</b>			<b>144</b>		<b>155.04 kW</b>	

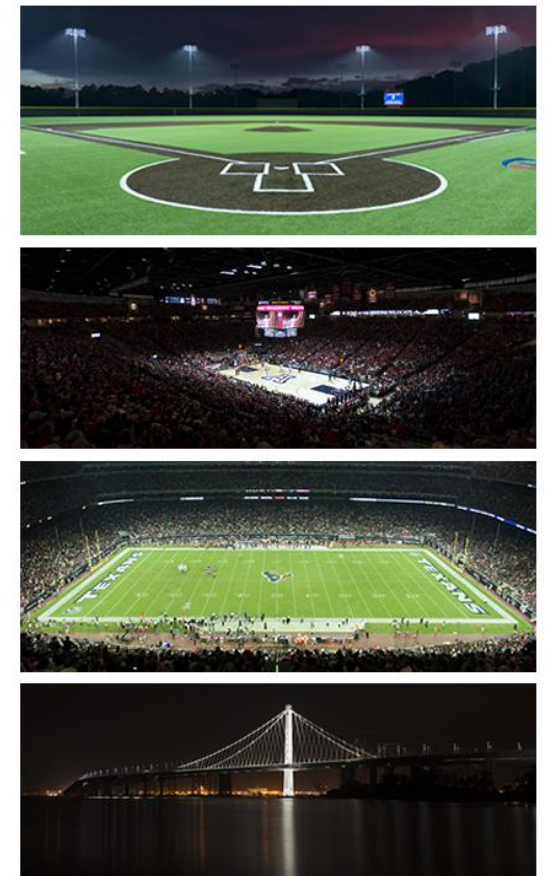
Circuit Summary			
Circuit	Description	Load	Fixture Qty
A	Soccer 1	25.84 kW	24
B	Soccer 2	25.84 kW	24
C	Soccer 3	25.84 kW	24
D	Soccer 4	25.84 kW	24
E	Soccer 5	25.84 kW	24
F	Soccer 6	25.84 kW	24

Fixture Type Summary							
Type	Source	Wattage	Lumens	L90	L80	L70	Quantity
TLC-LED-1200	LED 5700K - 75 CRI	1170W	136,000	>120,000	>120,000	>120,000	96
TLC-LED-900	LED 5700K - 75 CRI	890W	89,600	>120,000	>120,000	>120,000	48

## Light Level Summary

Calculation Grid Summary								
Grid Name	Calculation Metric	Illumination					Circuits	Fixture Qty
		Ave	Min	Max	Max/Min	Ave/Min		
Property Line Spill	Horizontal	0	0	0.01	0.00		A,B,C,D,E, F	144
Property Line Spill	Max Candela (by Fixture)	256	0	10838	0.00		A,B,C,D,E, F	144
Property Line Spill	Max Vertical Illuminance Metric	0	0	0.07	0.00		A,B,C,D,E, F	144
Soccer 1	Horizontal Illuminance	32.2	27	35	1.31	1.19	A	24
Soccer 2	Horizontal Illuminance	32.2	28	35	1.27	1.15	B	24
Soccer 3	Horizontal Illuminance	32.2	27	35	1.31	1.19	C	24
Soccer 4	Horizontal Illuminance	32.2	28	35	1.27	1.15	D	24
Soccer 5	Horizontal Illuminance	32.2	27	35	1.31	1.19	E	24
Soccer 6	Horizontal Illuminance	32.2	28	35	1.27	1.15	F	24
Spill Grid	Horizontal	7.99	0	46	0.00		A,B,C,D,E, F	144

## From Hometown to Professional



**We Make It Happen.**

Not to be reproduced in whole or part without the written consent of Musco Sports Lighting, LLC. ©1981, 2022 Musco Sports Lighting, LLC.



**EQUIPMENT LIST FOR AREAS SHOWN**

Pole				Luminaires				
QTY	LOCATION	SIZE	GRADE ELEVATION	MOUNTING HEIGHT	LUMINAIRE TYPE	QTY / POLE	THIS GRID	OTHER GRIDS
2	S1, S4	70'	-	70'	TLC-LED-900	2	2	0
				70'	TLC-LED-1200	4	4	0
2	S2, S5	70'	-	70'	TLC-LED-900	2/2*	2	2
				70'	TLC-LED-1200	4/4*	4	4
4	TOTALS					36	24	12

\* This structure utilizes a back-to-back mounting configuration

GRID SUMMARY	
Name:	Soccer 1
Size:	330' x 210'
Spacing:	30.0' x 30.0'
Height:	3.0' above grade

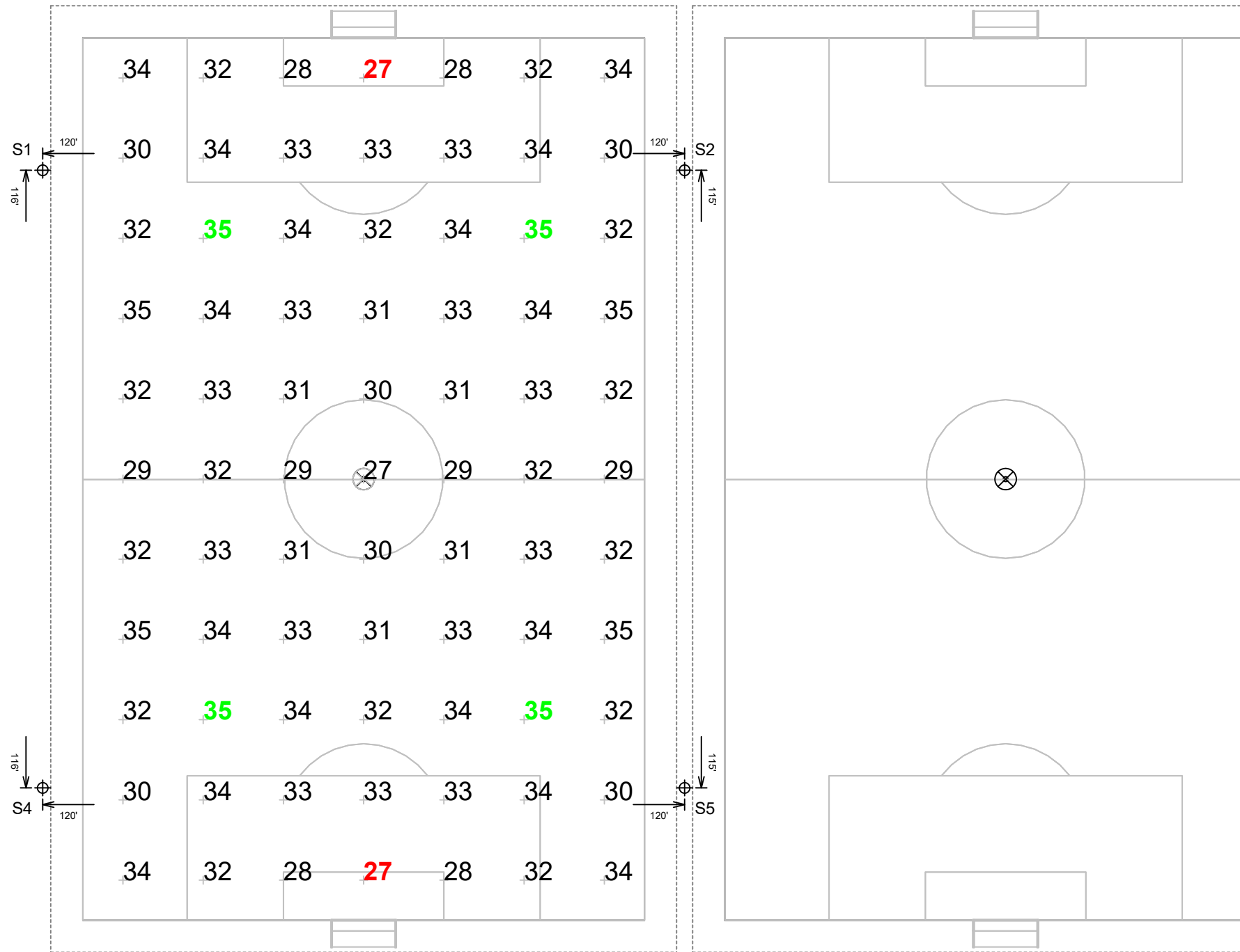
ILLUMINATION SUMMARY	
MAINTAINED HORIZONTAL FOOTCANDLES	
Entire Grid	
Guaranteed Average:	30
Scan Average:	32.15
Maximum:	35
Minimum:	27
Avg / Min:	1.19
Guaranteed Max / Min:	2.5
Max / Min:	1.31
UG (adjacent pts):	1.23
CU:	0.77
No. of Points:	77
LUMINAIRE INFORMATION	
Applied Circuits:	A
No. of Luminaires:	24
Total Load:	25.84 kW

**Guaranteed Performance:** The ILLUMINATION described above is guaranteed per your Musco Warranty document and includes a 0.95 dirt depreciation factor.

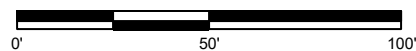
**Field Measurements:** Individual field measurements may vary from computer-calculated predictions and should be taken in accordance with IESNA RP-6-15.

**Electrical System Requirements:** Refer to Amperage Draw Chart and/or the "Musco Control System Summary" for electrical sizing.

**Installation Requirements:** Results assume ± 3% nominal voltage at line side of the driver and structures located within 3 feet (1m) of design locations.



SCALE IN FEET 1 : 50



**We Make It Happen.**





**EQUIPMENT LIST FOR AREAS SHOWN**

Pole		Luminaires						
QTY	LOCATION	SIZE	GRADE ELEVATION	MOUNTING HEIGHT	LUMINAIRE TYPE	QTY / POLE	THIS GRID	OTHER GRIDS
2	S2, S5	70'	-	70'	TLC-LED-900	2/2*	2	2
				70'	TLC-LED-1200	4/4*	4	4
2	S3, S6	70'	-	70'	TLC-LED-900	2	2	0
				70'	TLC-LED-1200	4	4	0
4	TOTALS					36	24	12

\* This structure utilizes a back-to-back mounting configuration

GRID SUMMARY	
Name:	Soccer 2
Size:	330' x 210'
Spacing:	30.0' x 30.0'
Height:	3.0' above grade

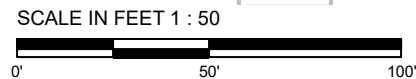
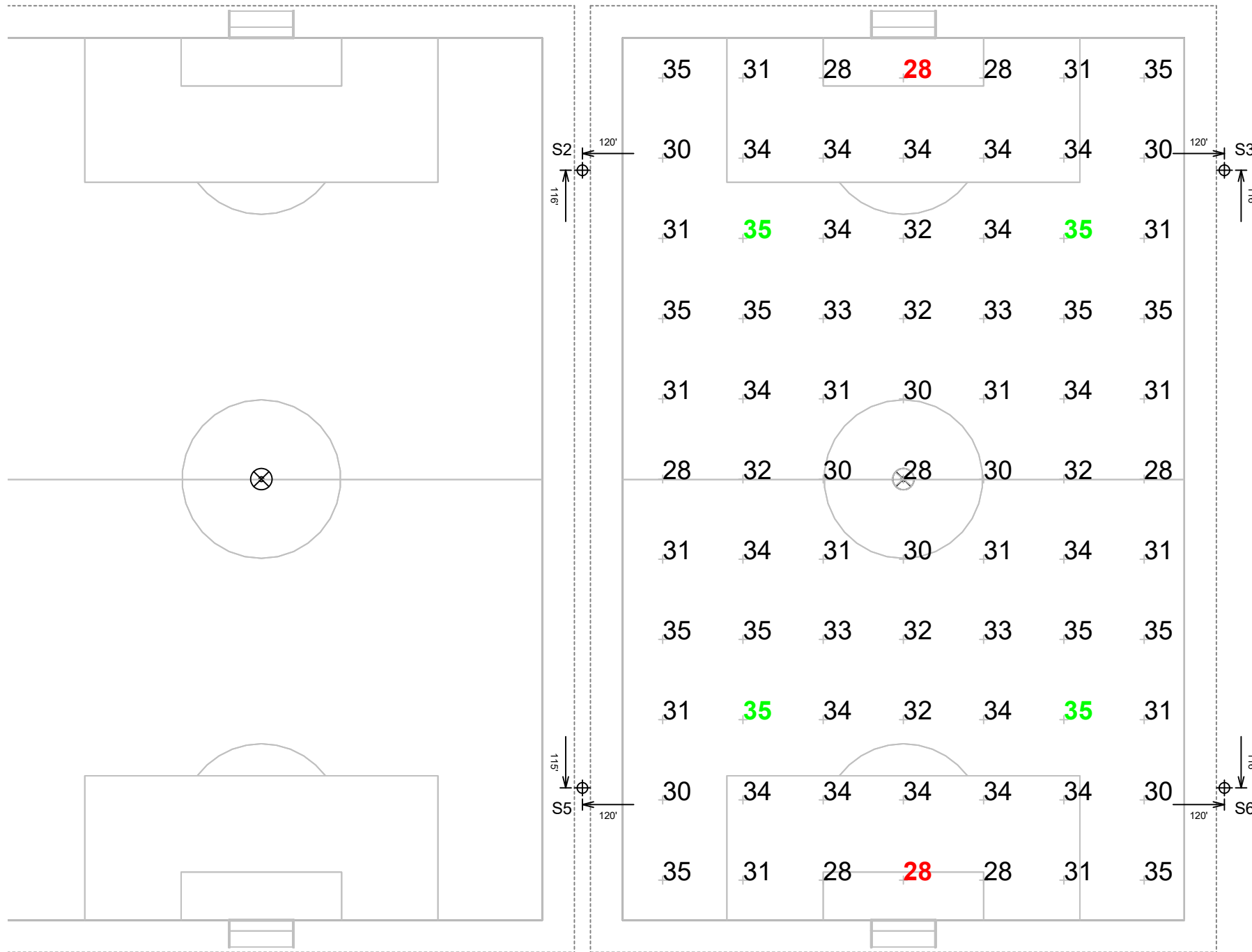
ILLUMINATION SUMMARY	
MAINTAINED HORIZONTAL FOOTCANDLES	
Entire Grid	
Guaranteed Average:	30
Scan Average:	32.21
Maximum:	35
Minimum:	28
Avg / Min:	1.16
Guaranteed Max / Min:	2.5
Max / Min:	1.27
UG (adjacent pts):	1.23
CU:	0.77
No. of Points:	77
LUMINAIRE INFORMATION	
Applied Circuits:	B
No. of Luminaires:	24
Total Load:	25.84 kW

**Guaranteed Performance:** The ILLUMINATION described above is guaranteed per your Musco Warranty document and includes a 0.95 dirt depreciation factor.

**Field Measurements:** Individual field measurements may vary from computer-calculated predictions and should be taken in accordance with IESNA RP-6-15.

**Electrical System Requirements:** Refer to Amperage Draw Chart and/or the "Musco Control System Summary" for electrical sizing.

**Installation Requirements:** Results assume ± 3% nominal voltage at line side of the driver and structures located within 3 feet (1m) of design locations.



Pole location(s) Ⓢ dimensions are relative to 0,0 reference point(s) ⊗



**We Make It Happen.**



EQUIPMENT LIST FOR AREAS SHOWN								
Pole				Luminaires				
QTY	LOCATION	SIZE	GRADE ELEVATION	MOUNTING HEIGHT	LUMINAIRE TYPE	QTY / POLE	THIS GRID	OTHER GRIDS
2	S7, S10	70'	-	70'	TLC-LED-900	2	2	0
				70'	TLC-LED-1200	4	4	0
2	S8, S11	70'	-	70'	TLC-LED-900	2/2*	2	2
				70'	TLC-LED-1200	4/4*	4	4
TOTALS						36	24	12

\* This structure utilizes a back-to-back mounting configuration

GRID SUMMARY	
Name:	Soccer 3
Size:	330' x 210'
Spacing:	30.0' x 30.0'
Height:	3.0' above grade

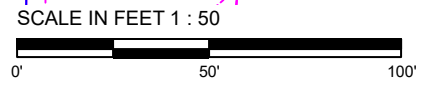
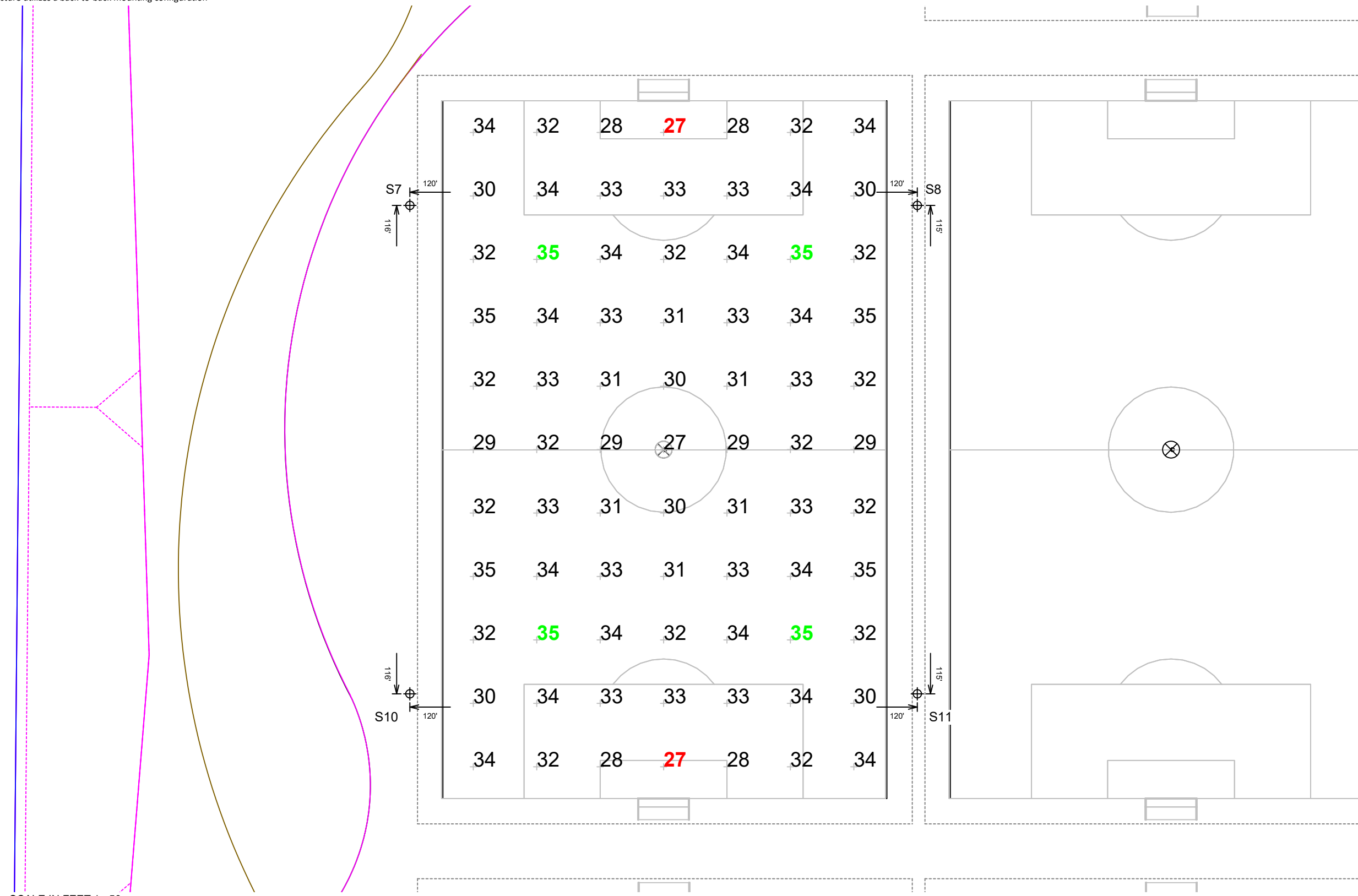
ILLUMINATION SUMMARY	
MAINTAINED HORIZONTAL FOOTCANDLES	
Entire Grid	
Guaranteed Average:	30
Scan Average:	32.15
Maximum:	35
Minimum:	27
Avg / Min:	1.19
Guaranteed Max / Min:	2.5
Max / Min:	1.31
UG (adjacent pts):	1.23
CU:	0.77
No. of Points:	77
LUMINAIRE INFORMATION	
Applied Circuits:	C
No. of Luminaires:	24
Total Load:	25.84 kW

**Guaranteed Performance:** The ILLUMINATION described above is guaranteed per your Musco Warranty document and includes a 0.95 dirt depreciation factor.

**Field Measurements:** Individual field measurements may vary from computer-calculated predictions and should be taken in accordance with IESNA RP-6-15.

**Electrical System Requirements:** Refer to Amperage Draw Chart and/or the "Musco Control System Summary" for electrical sizing.

**Installation Requirements:** Results assume ± 3% nominal voltage at line side of the driver and structures located within 3 feet (1m) of design locations.



Pole location(s) ⊕ dimensions are relative to 0,0 reference point(s) ⊗





**EQUIPMENT LIST FOR AREAS SHOWN**

Pole		Luminaires						
QTY	LOCATION	SIZE	GRADE ELEVATION	MOUNTING HEIGHT	LUMINAIRE TYPE	QTY / POLE	THIS GRID	OTHER GRIDS
2	S8, S11	70'	-	70'	TLC-LED-900	2/2*	2	2
				70'	TLC-LED-1200	4/4*	4	4
2	S9, S12	70'	-	70'	TLC-LED-900	2	2	0
				70'	TLC-LED-1200	4	4	0
<b>TOTALS</b>						<b>36</b>	<b>24</b>	<b>12</b>

\* This structure utilizes a back-to-back mounting configuration

GRID SUMMARY	
Name:	Soccer 4
Size:	330' x 210'
Spacing:	30.0' x 30.0'
Height:	3.0' above grade

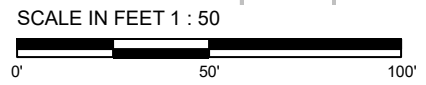
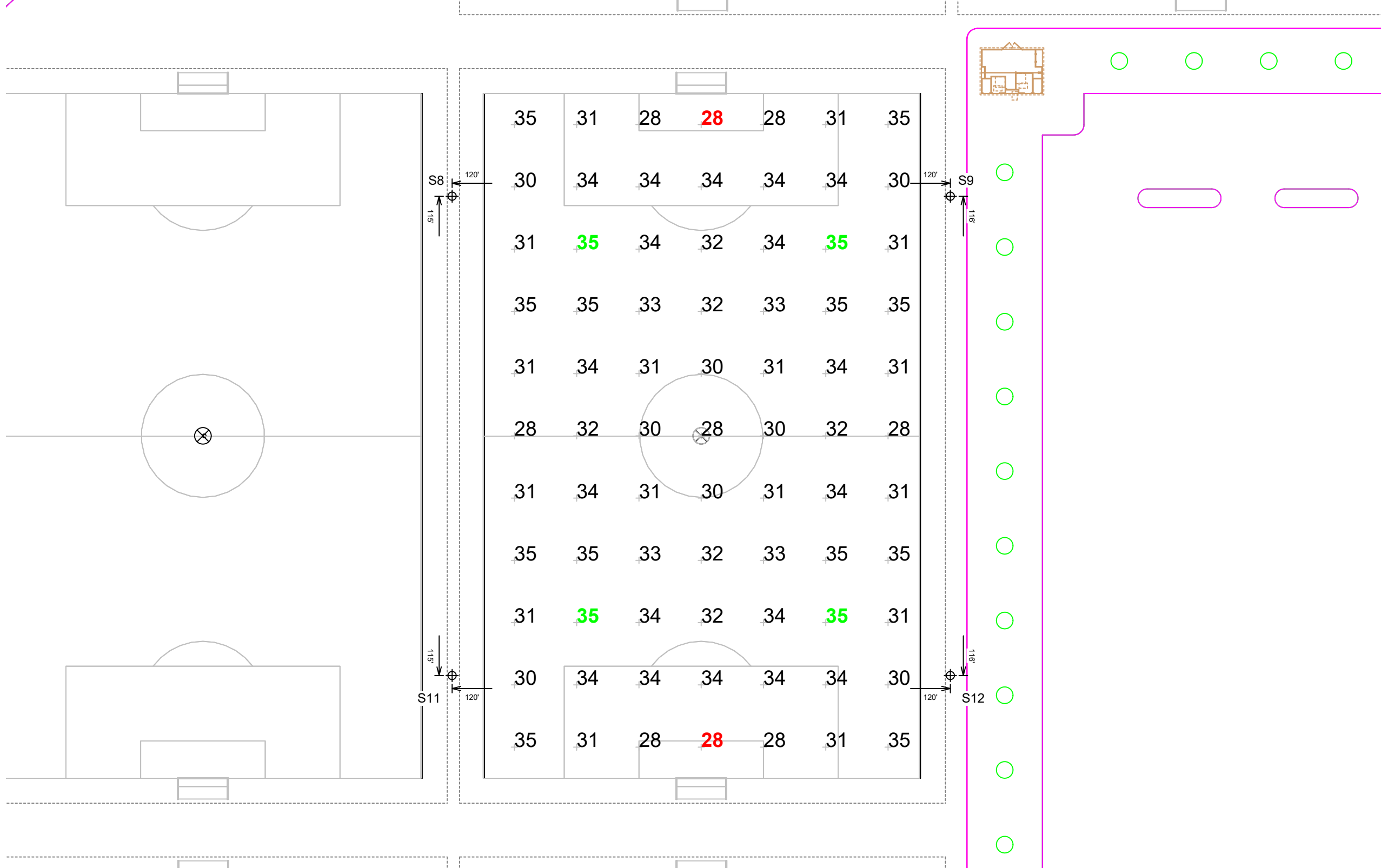
ILLUMINATION SUMMARY	
MAINTAINED HORIZONTAL FOOTCANDLES	
Entire Grid	
Guaranteed Average:	30
Scan Average:	32.21
Maximum:	35
Minimum:	28
Avg / Min:	1.16
Guaranteed Max / Min:	2.5
Max / Min:	1.27
UG (adjacent pts):	1.23
CU:	0.77
No. of Points:	77
LUMINAIRE INFORMATION	
Applied Circuits:	D
No. of Luminaires:	24
Total Load:	25.84 kW

**Guaranteed Performance:** The ILLUMINATION described above is guaranteed per your Musco Warranty document and includes a 0.95 dirt depreciation factor.

**Field Measurements:** Individual field measurements may vary from computer-calculated predictions and should be taken in accordance with IESNA RP-6-15.

**Electrical System Requirements:** Refer to Amperage Draw Chart and/or the "Musco Control System Summary" for electrical sizing.

**Installation Requirements:** Results assume ± 3% nominal voltage at line side of the driver and structures located within 3 feet (1m) of design locations.



Pole location(s)  $\oplus$  dimensions are relative to 0,0 reference point(s)  $\otimes$



**We Make It Happen.**

Not to be reproduced in whole or part without the written consent of Musco Sports Lighting, LLC. ©1981, 2022 Musco Sports Lighting, LLC.



EQUIPMENT LIST FOR AREAS SHOWN								
Pole				Luminaires				
QTY	LOCATION	SIZE	GRADE ELEVATION	MOUNTING HEIGHT	LUMINAIRE TYPE	QTY / POLE	THIS GRID	OTHER GRIDS
2	S13, S16	70'	-	70'	TLC-LED-900	2	2	0
				70'	TLC-LED-1200	4	4	0
2	S14, S17	70'	-	70'	TLC-LED-900	2/2*	2	2
				70'	TLC-LED-1200	4/4*	4	4
4	TOTALS					36	24	12

\* This structure utilizes a back-to-back mounting configuration

GRID SUMMARY	
Name:	Soccer 5
Size:	330' x 210'
Spacing:	30.0' x 30.0'
Height:	3.0' above grade

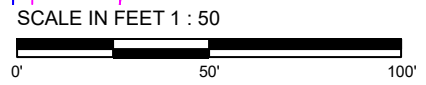
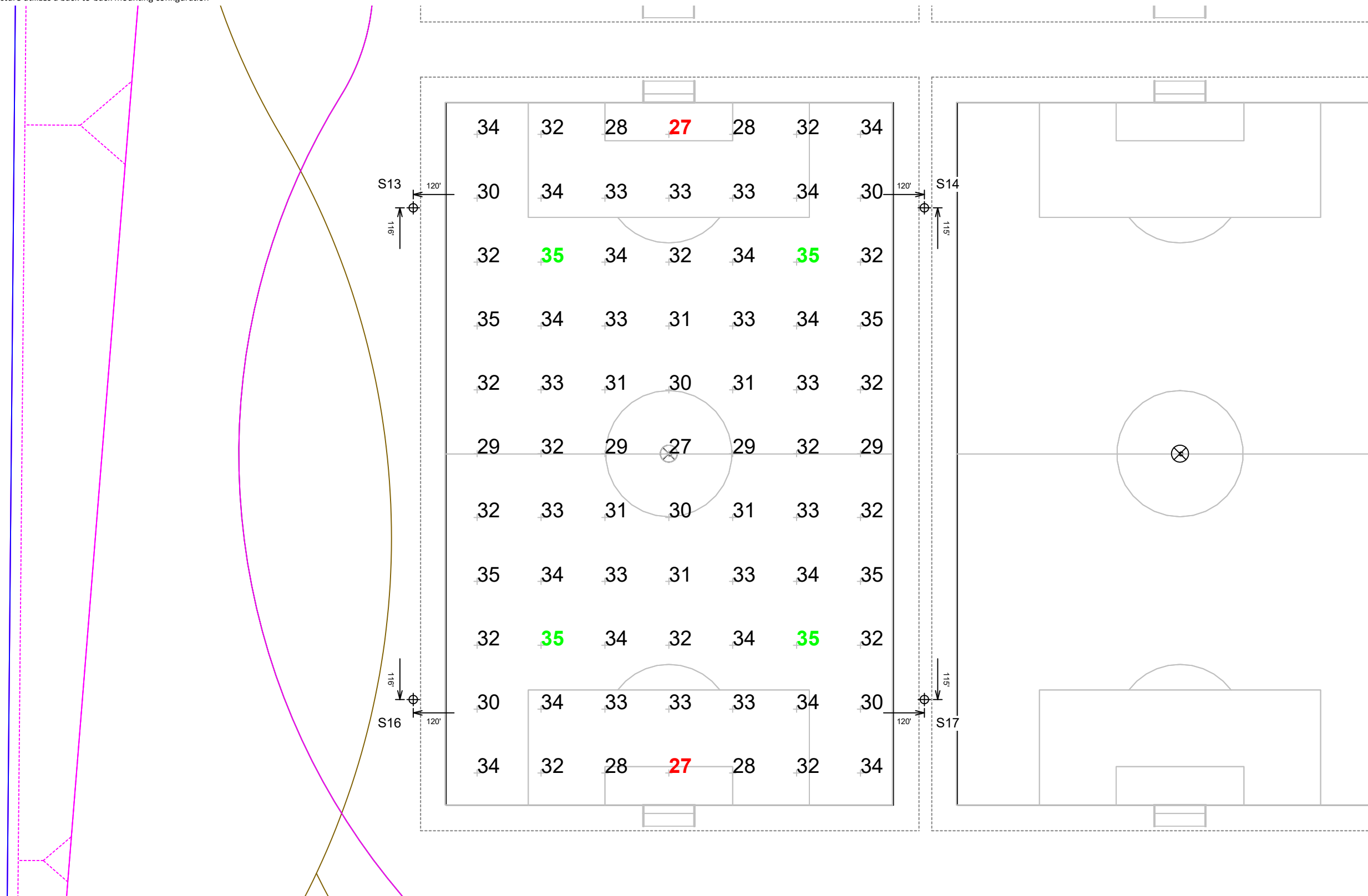
ILLUMINATION SUMMARY	
MAINTAINED HORIZONTAL FOOTCANDLES	
Entire Grid	
Guaranteed Average:	30
Scan Average:	32.15
Maximum:	35
Minimum:	27
Avg / Min:	1.19
Guaranteed Max / Min:	2.5
Max / Min:	1.31
UG (adjacent pts):	1.23
CU:	0.77
No. of Points:	77
LUMINAIRE INFORMATION	
Applied Circuits:	E
No. of Luminaires:	24
Total Load:	25.84 kW

**Guaranteed Performance:** The ILLUMINATION described above is guaranteed per your Musco Warranty document and includes a 0.95 dirt depreciation factor.

**Field Measurements:** Individual field measurements may vary from computer-calculated predictions and should be taken in accordance with IESNA RP-6-15.

**Electrical System Requirements:** Refer to Amperage Draw Chart and/or the "Musco Control System Summary" for electrical sizing.

**Installation Requirements:** Results assume ± 3% nominal voltage at line side of the driver and structures located within 3 feet (1m) of design locations.



Pole location(s) Ⓢ dimensions are relative to 0,0 reference point(s) ⊗







**EQUIPMENT LIST FOR AREAS SHOWN**

Pole		Luminaires						
QTY	LOCATION	SIZE	GRADE ELEVATION	MOUNTING HEIGHT	LUMINAIRE TYPE	QTY / POLE	THIS GRID	OTHER GRIDS
2	S14, S17	70'	-	70'	TLC-LED-900	2/2*	2	2
				70'	TLC-LED-1200	4/4*	4	4
2	S15, S18	70'	-	70'	TLC-LED-900	2	2	0
				70'	TLC-LED-1200	4	4	0
4	TOTALS					36	24	12

\* This structure utilizes a back-to-back mounting configuration

GRID SUMMARY	
Name:	Soccer 6
Size:	330' x 210'
Spacing:	30.0' x 30.0'
Height:	3.0' above grade

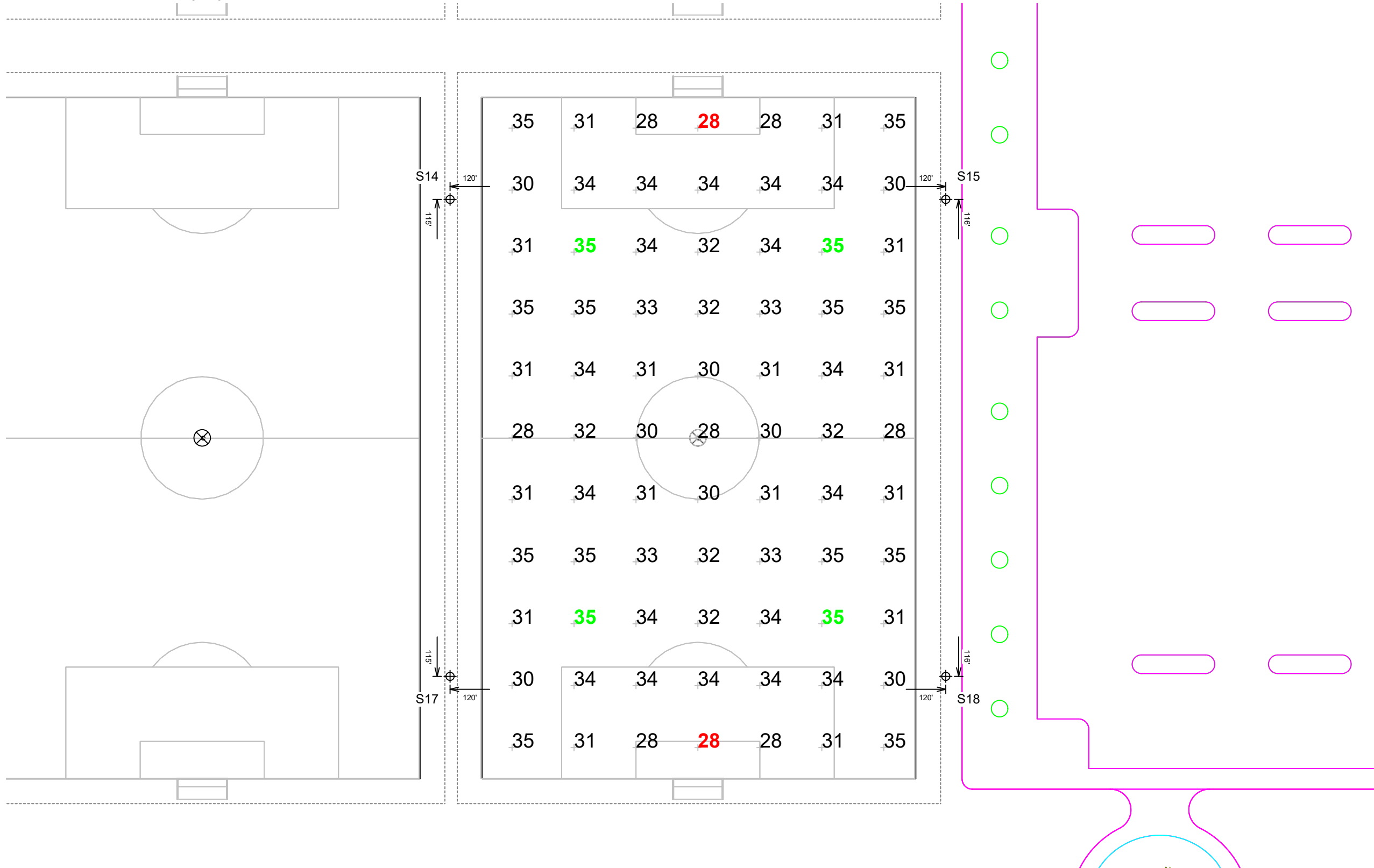
ILLUMINATION SUMMARY	
MAINTAINED HORIZONTAL FOOTCANDLES	
Entire Grid	
Guaranteed Average:	30
Scan Average:	32.21
Maximum:	35
Minimum:	28
Avg / Min:	1.16
Guaranteed Max / Min:	2.5
Max / Min:	1.27
UG (adjacent pts):	1.23
CU:	0.77
No. of Points:	77
LUMINAIRE INFORMATION	
Applied Circuits:	F
No. of Luminaires:	24
Total Load:	25.84 kW

**Guaranteed Performance:** The ILLUMINATION described above is guaranteed per your Musco Warranty document and includes a 0.95 dirt depreciation factor.

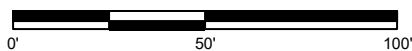
**Field Measurements:** Individual field measurements may vary from computer-calculated predictions and should be taken in accordance with IESNA RP-6-15.

**Electrical System Requirements:** Refer to Amperage Draw Chart and/or the "Musco Control System Summary" for electrical sizing.

**Installation Requirements:** Results assume ± 3% nominal voltage at line side of the driver and structures located within 3 feet (1m) of design locations.



SCALE IN FEET 1 : 50



Pole location(s) Ⓢ dimensions are relative to 0,0 reference point(s) ⊗



**We Make It Happen.**

Not to be reproduced in whole or part without the written consent of Musco Sports Lighting, LLC. ©1981, 2022 Musco Sports Lighting, LLC.



GRID SUMMARY	
Name:	Spill Grid
Spacing:	30.0' x 30.0'
Height:	3.0' above grade

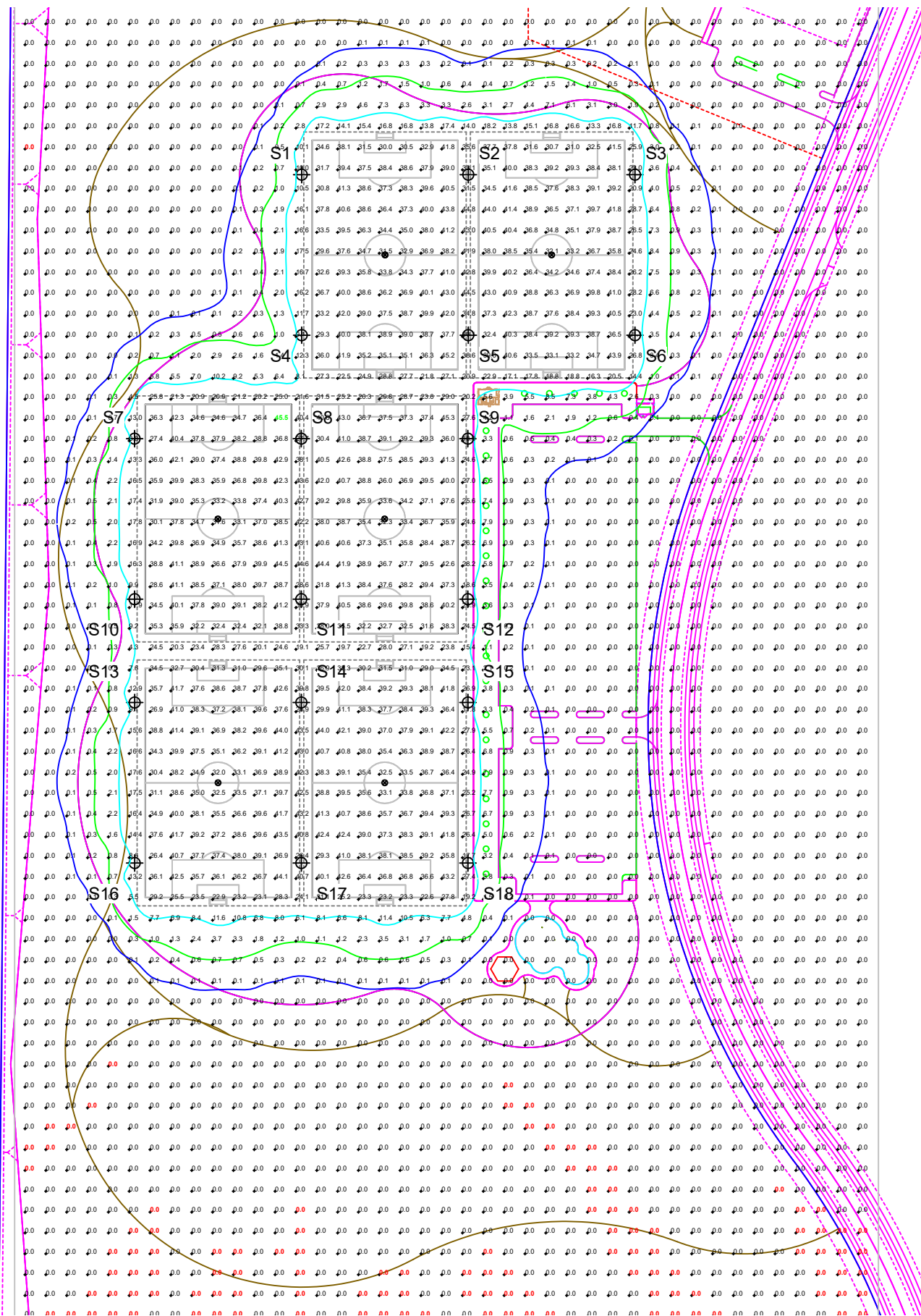
ILLUMINATION SUMMARY	
MAINTAINED HORIZONTAL FOOTCANDLES	
	Entire Grid
Scan Average:	7.99
Maximum:	46
Minimum:	0
No. of Points:	2788
LUMINAIRE INFORMATION	
Applied Circuits:	A, B, C, D, E, F
No. of Luminaires:	144
Total Load:	155.04 kW

**Guaranteed Performance:** The ILLUMINATION described above is guaranteed per your Musco Warranty document and includes a 0.95 dirt depreciation factor.

**Field Measurements:** Individual field measurements may vary from computer-calculated predictions and should be taken in accordance with IESNA RP-6-15.

**Electrical System Requirements:** Refer to Amperage Draw Chart and/or the "Musco Control System Summary" for electrical sizing.

**Installation Requirements:** Results assume ± 3% nominal voltage at line side of the driver and structures located within 3 feet (1m) of design locations.



NOTES: Contour lines indicate cutoff of horizontal light at 10.0, 1.0, and 0.1 footcandles, as modeled at 3' above common field grade.

SCALE IN FEET 1 : 200



Pole location(s) ⊕ dimensions are relative to 0,0 reference point(s) ⊗



We Make It Happen.

Not to be reproduced in whole or part without the written consent of Musco Sports Lighting, LLC. ©1981, 2022 Musco Sports Lighting, LLC.



GRID SUMMARY	
Name:	Property Line Spill
Spacing:	30.0'
Height:	3.0' above grade

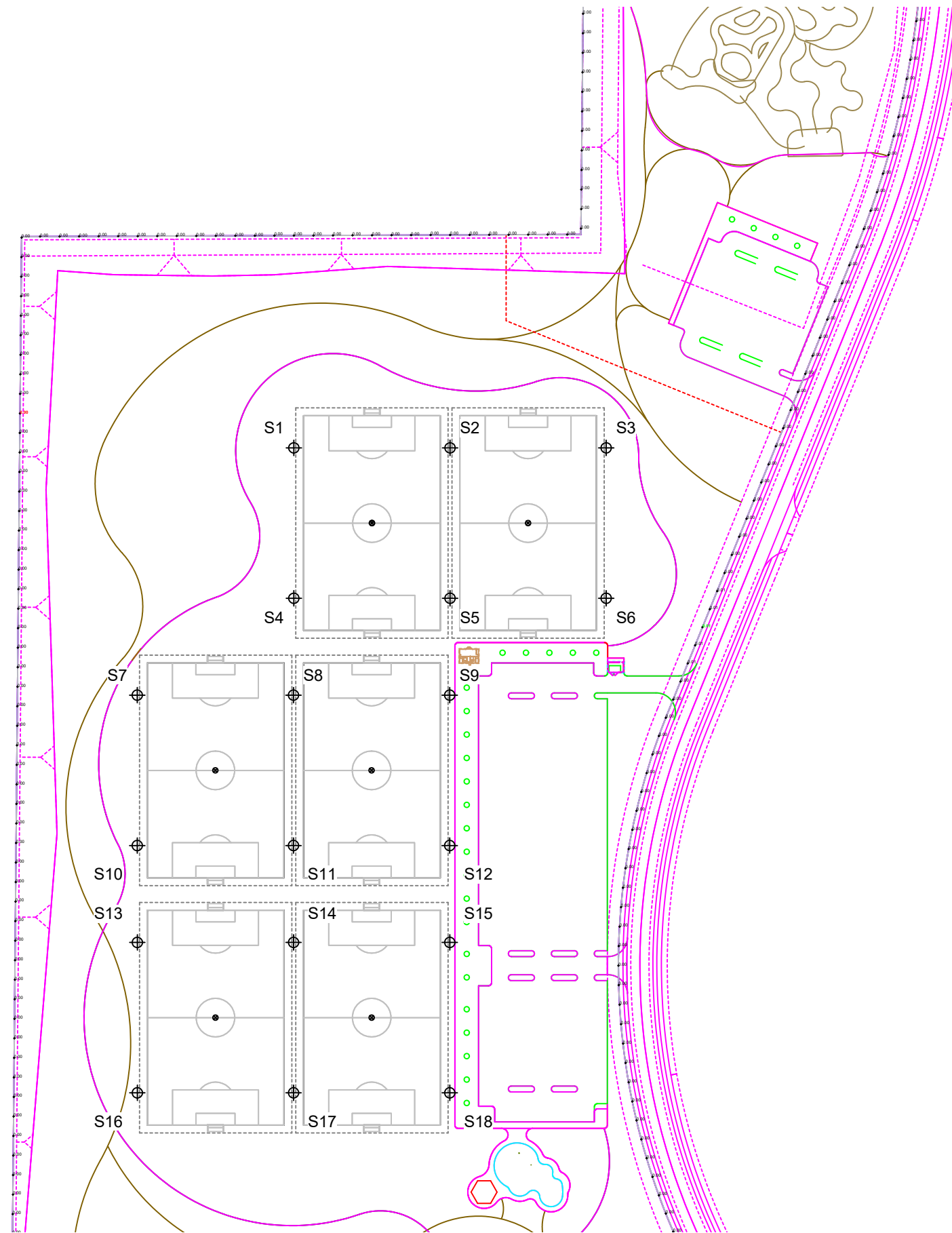
ILLUMINATION SUMMARY	
HORIZONTAL FOOTCANDLES	
Entire Grid	
Scan Average:	0.0003
Maximum:	0.01
Minimum:	0.00
No. of Points:	288
LUMINAIRE INFORMATION	
Applied Circuits:	A, B, C, D, E, F
No. of Luminaires:	144
Total Load:	155.04 kW

**Guaranteed Performance:** The ILLUMINATION described above is guaranteed per your Musco Warranty document.

**Field Measurements:** Individual field measurements may vary from computer-calculated predictions and should be taken in accordance with IESNA RP-6-15.

**Electrical System Requirements:** Refer to Amperage Draw Chart and/or the "Musco Control System Summary" for electrical sizing.

**Installation Requirements:** Results assume  $\pm 3\%$  nominal voltage at line side of the driver and structures located within 3 feet (1m) of design locations.



NOTES: Property line spill modeled at field grade.  
Field measurements may vary if elevation changes are present.

SCALE IN FEET 1 : 200



ENGINEERED DESIGN By: B.Guler · File #222286A · 26-Sep-22

Pole location(s) ⊕ dimensions are relative to 0,0 reference point(s) ⊗



**We Make It Happen.**

Not to be reproduced in whole or part without the written consent of Musco Sports Lighting, LLC. ©1981, 2022 Musco Sports Lighting, LLC.

ILLUMINATION SUMMARY



GRID SUMMARY	
Name:	Property Line Spill
Spacing:	30.0'
Height:	3.0' above grade

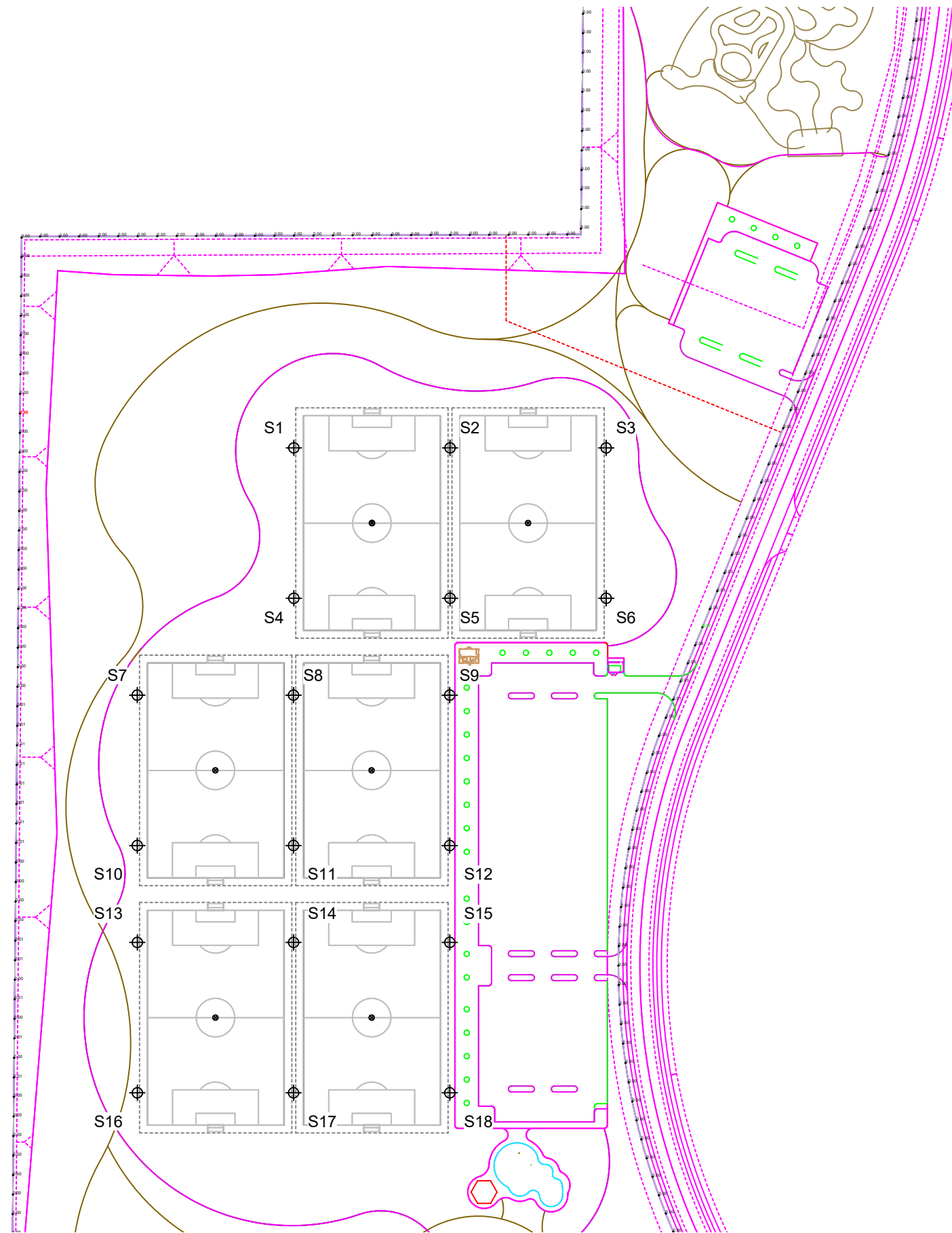
ILLUMINATION SUMMARY	
MAX VERTICAL FOOTCANDLES	
	Entire Grid
Scan Average:	0.0018
Maximum:	0.07
Minimum:	0.00
No. of Points:	288
LUMINAIRE INFORMATION	
Applied Circuits:	A, B, C, D, E, F
No. of Luminaires:	144
Total Load:	155.04 kW

**Guaranteed Performance:** The ILLUMINATION described above is guaranteed per your Musco Warranty document.

**Field Measurements:** Individual field measurements may vary from computer-calculated predictions and should be taken in accordance with IESNA RP-6-15.

**Electrical System Requirements:** Refer to Amperage Draw Chart and/or the "Musco Control System Summary" for electrical sizing.

**Installation Requirements:** Results assume  $\pm 3\%$  nominal voltage at line side of the driver and structures located within 3 feet (1m) of design locations.



NOTES: Property line spill modeled at field grade.  
Field measurements may vary if elevation changes are present.

SCALE IN FEET 1 : 200



Pole location(s)  $\oplus$  dimensions are relative to 0,0 reference point(s)  $\otimes$



We Make It Happen.





GRID SUMMARY	
Name:	Property Line Spill
Spacing:	30.0'
Height:	3.0' above grade

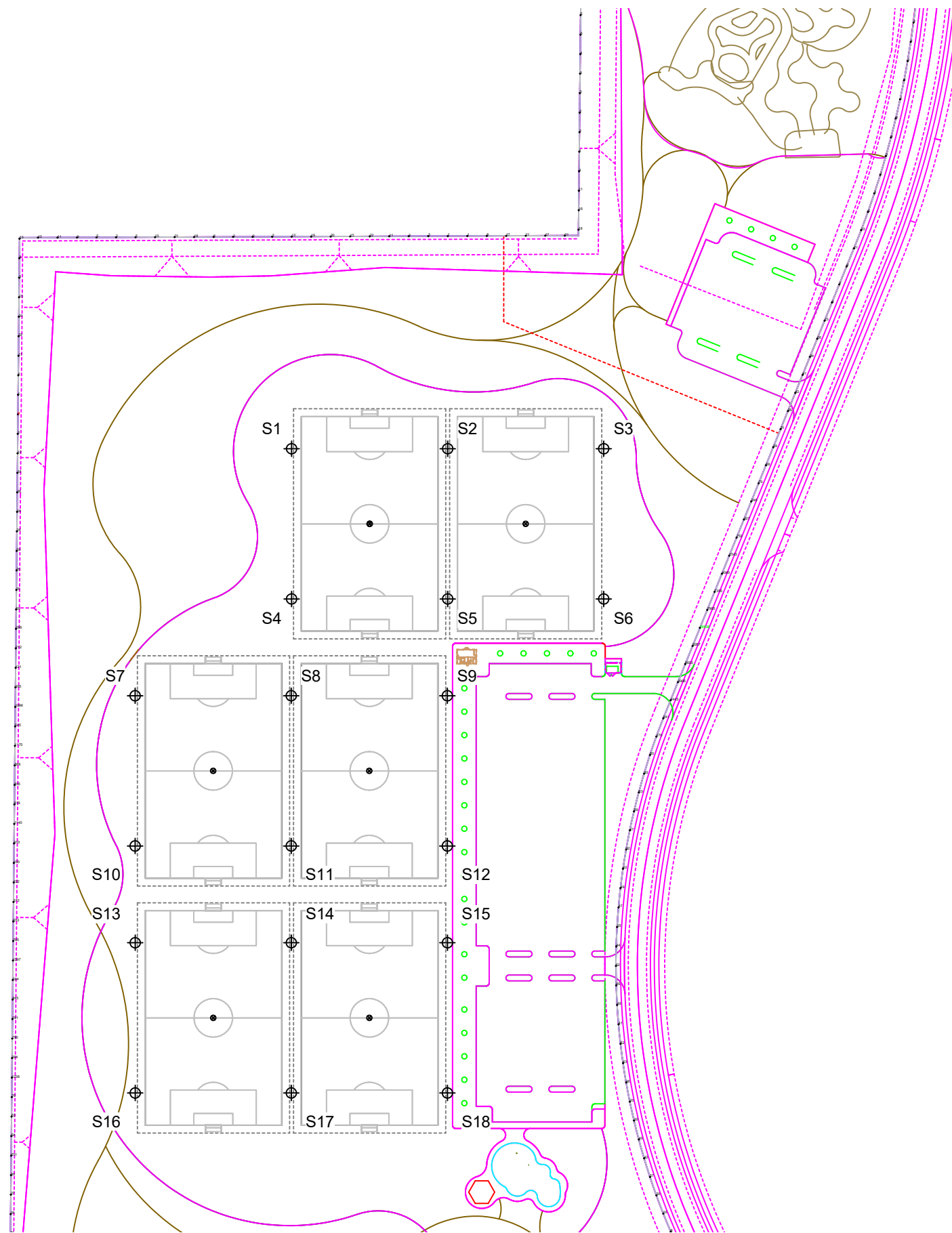
ILLUMINATION SUMMARY	
CANDELA (PER FIXTURE)	
Entire Grid	
Scan Average:	256.0853
Maximum:	10838.12
Minimum:	0.00
No. of Points:	288
LUMINAIRE INFORMATION	
Applied Circuits:	A, B, C, D, E, F
No. of Luminaires:	144
Total Load:	155.04 kW

**Guaranteed Performance:** The ILLUMINATION described above is guaranteed per your Musco Warranty document.

**Field Measurements:** Individual field measurements may vary from computer-calculated predictions and should be taken in accordance with IESNA RP-6-15.

**Electrical System Requirements:** Refer to Amperage Draw Chart and/or the "Musco Control System Summary" for electrical sizing.

**Installation Requirements:** Results assume  $\pm 3\%$  nominal voltage at line side of the driver and structures located within 3 feet (1m) of design locations.



NOTES: Property line spill modeled at field grade.  
Field measurements may vary if elevation changes are present.

SCALE IN FEET 1 : 200

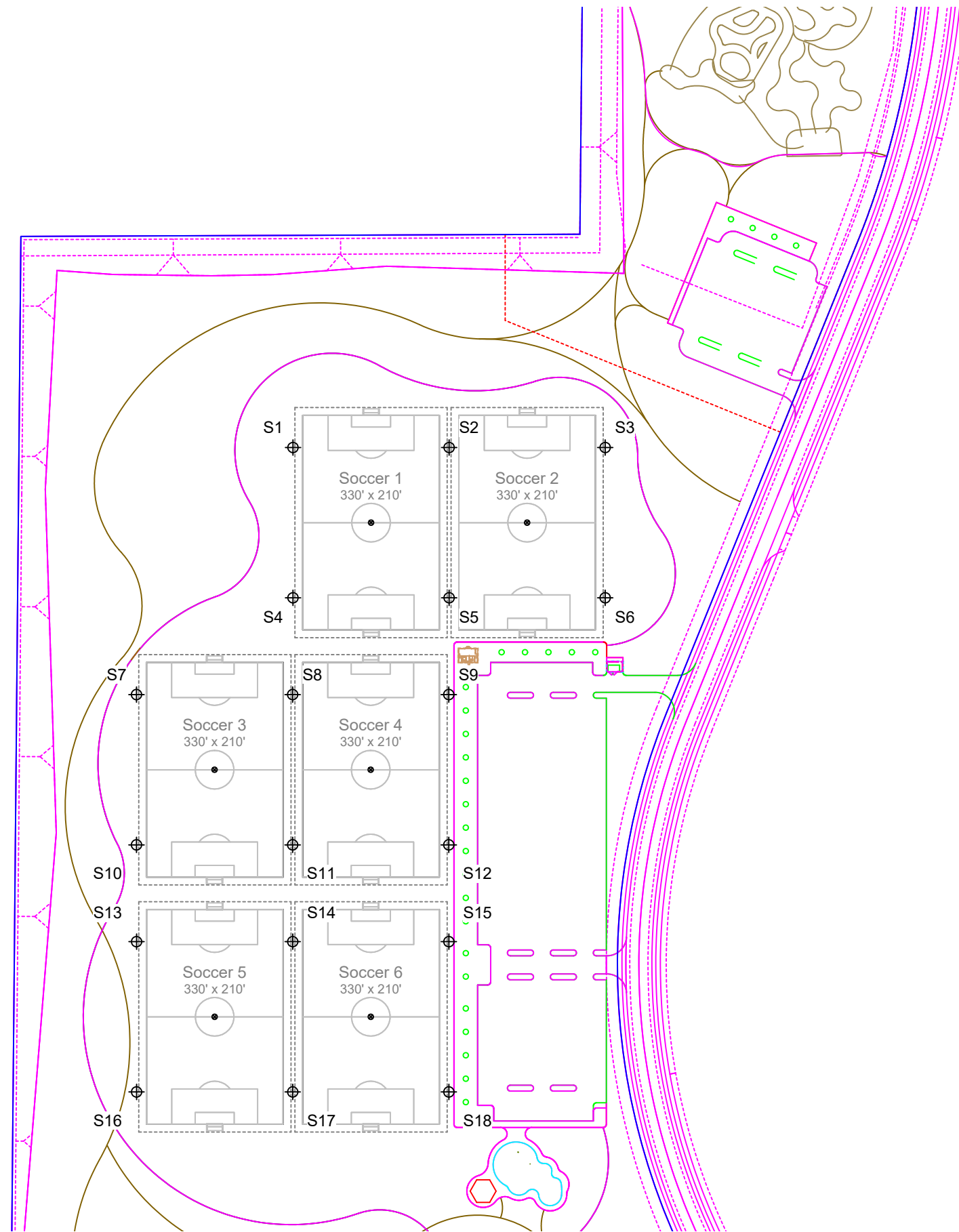


Pole location(s)  $\oplus$  dimensions are relative to 0,0 reference point(s)  $\otimes$



**We Make It Happen.**





**EQUIPMENT LAYOUT**

**INCLUDES:**

- Soccer 1
- Soccer 2
- Soccer 3
- Soccer 4
- Soccer 5
- Soccer 6

**Electrical System Requirements:** Refer to Amperage Draw Chart and/or the "Musco Control System Summary" for electrical sizing.

**Installation Requirements:** Results assume ± 3% nominal voltage at line side of the driver and structures located within 3 feet (1m) of design locations.

**EQUIPMENT LIST FOR AREAS SHOWN**

QTY	LOCATION	Pole		Luminaires		QTY / POLE					
		SIZE	GRADE ELEVATION	MOUNTING HEIGHT	LUMINAIRE TYPE						
12	S1, S3-S4 S12-S13 S15-S16 S18 S6-S7 S9-S10	70'	-	70'	TLC-LED-1200	4					
				70'	TLC-LED-900		2				
				6	S14, S17 S2, S5 S8, S11	70'		-	70'	TLC-LED-1200	4/4*
									70'	TLC-LED-900	2/2*
							TOTALS		144		

\* This structure utilizes a back-to-back mounting configuration

**SINGLE LUMINAIRE AMPERAGE DRAW CHART**

Ballast Specifications (.90 min power factor)	Line Amperage Per Luminaire (max draw)						
	208 (60)	220 (60)	240 (60)	277 (60)	347 (60)	380 (60)	480 (60)
Single Phase Voltage	7.0	6.6	6.1	5.2	4.2	4.0	3.0
TLC-LED-1200	5.3	5.0	4.6	4.0	3.2	2.9	2.3
TLC-LED-900							

SCALE IN FEET 1 : 200



Pole location(s) ⊕ dimensions are relative to 0,0 reference point(s) ⊗



**We Make It Happen.**

