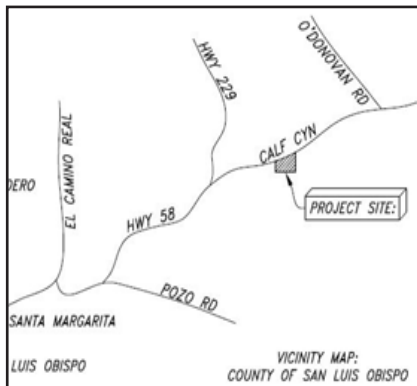
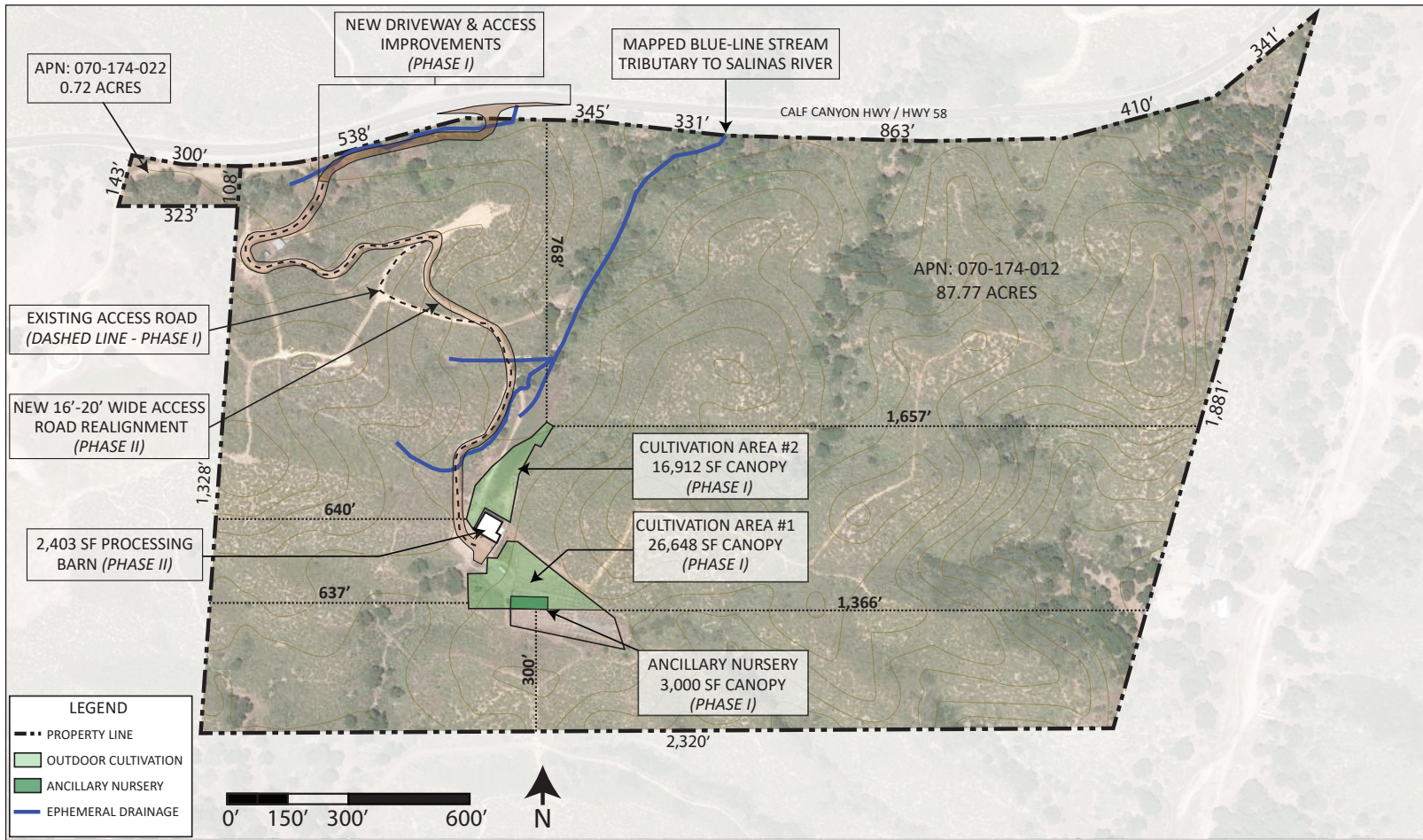


OVERALL SITE PLAN



SCOPE OF WORK

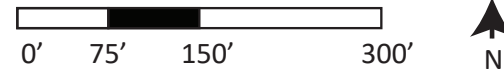
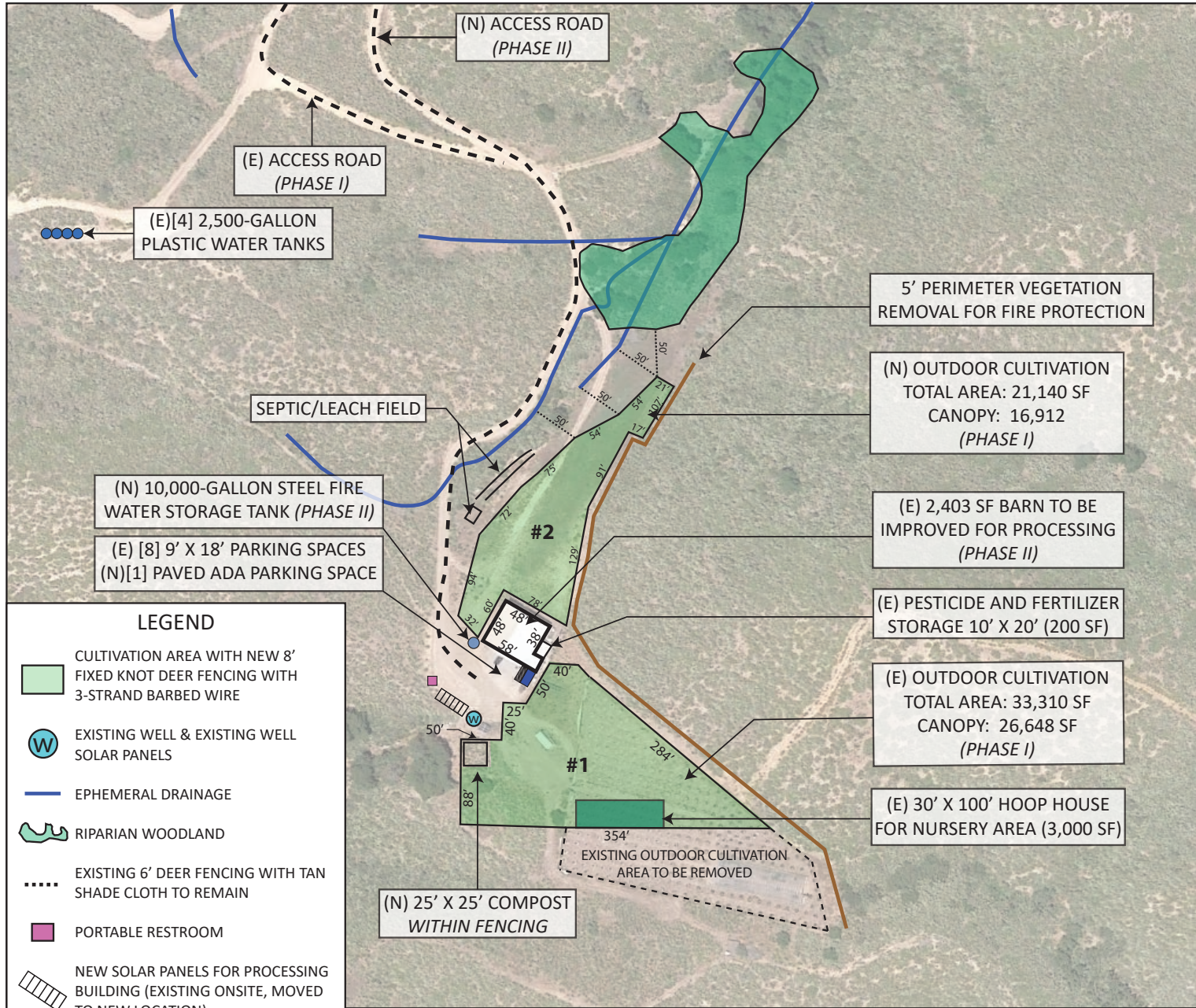
PHASE I:
 Outdoor Cultivation Canopy: 43,560
 Outdoor Ancillary Nursery Canopy: 3,000 sq. ft.
 Driveway Access Improvements: 40,560 sq. ft.
 Other Project Items: Compost Area, Portable Restroom, Parking, Pesticide and Fertilizer Storage, Solar Panels, Water Tanks, Vegetative Buffer

PHASE II:
 Processing Building: 2,403 sq. ft.
 Onsite Driveway Improvements: 63,440 sq. ft.
 10,000-Gallon Water Storage Tank for Fire Suppression: 100 SF
 (1) Paved ADA Parking Space: 162 SF

Sheet Index

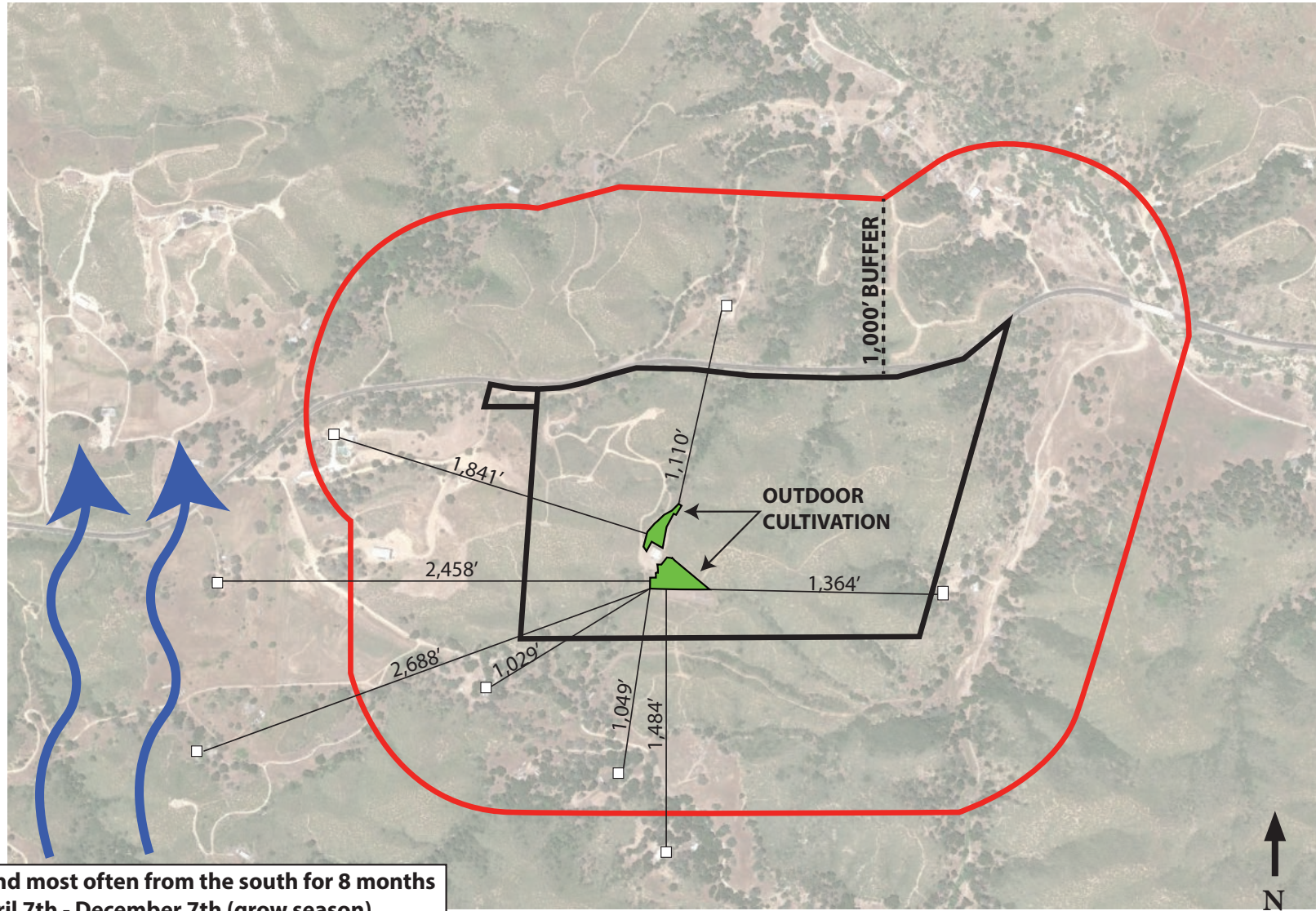
- 1) Overall Site Plan
- 2) Detailed Site Plan
- 3) Distance to Offsite Residences
- 4) Barn Floor plan
- 5) Barn Electrical Floor Plan

DETAILED SITE PLAN



DATE: May 2021	
Bigfoot Valley LLC	
Sheet	
2 of 5	

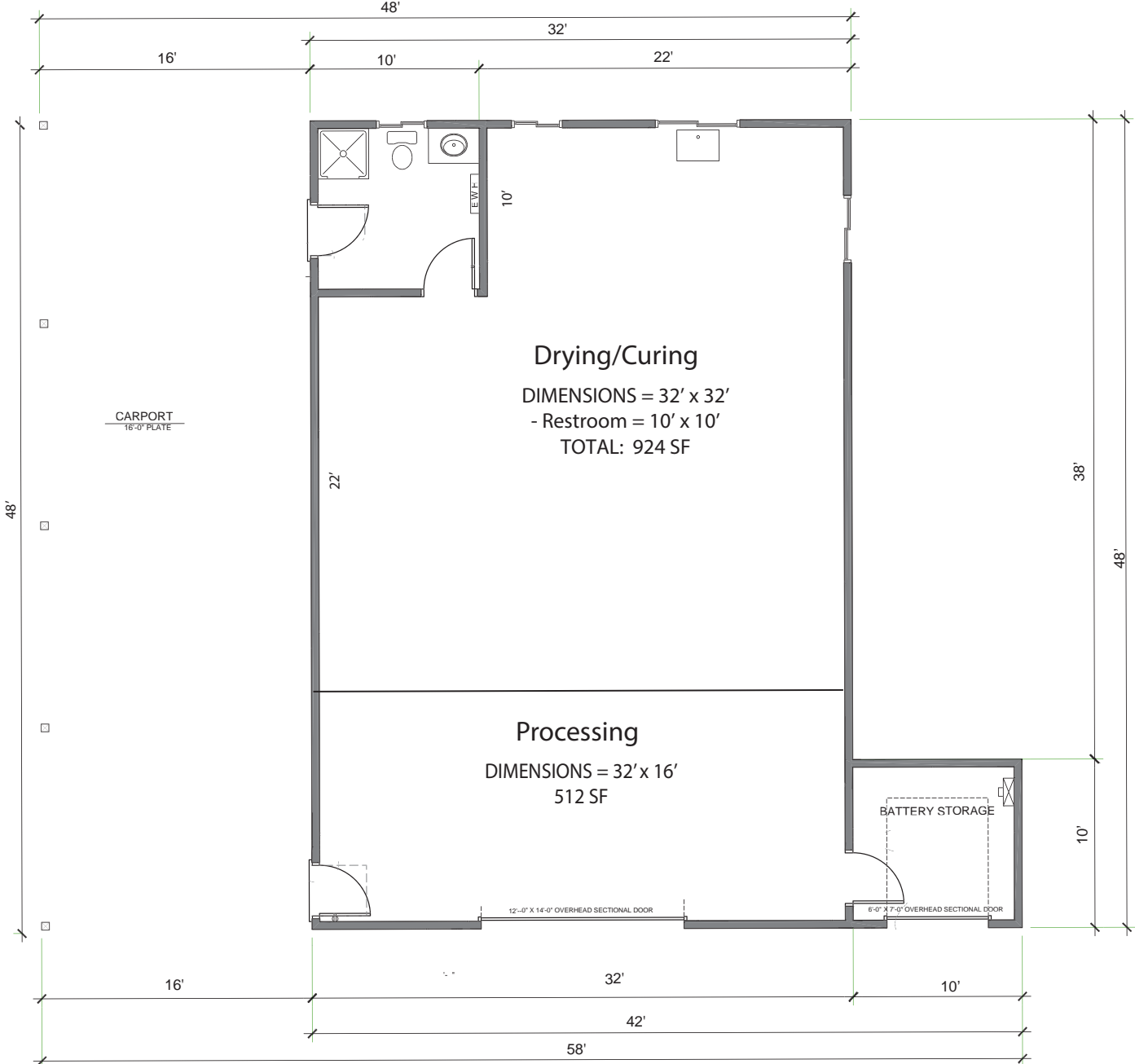
DISTANCE TO OFFSITE RESIDENCES



Wind most often from the south for 8 months
April 7th - December 7th (grow season)

DATE: May 2021	
Bigfoot Valley LLC	
Sheet	
3 of 5	

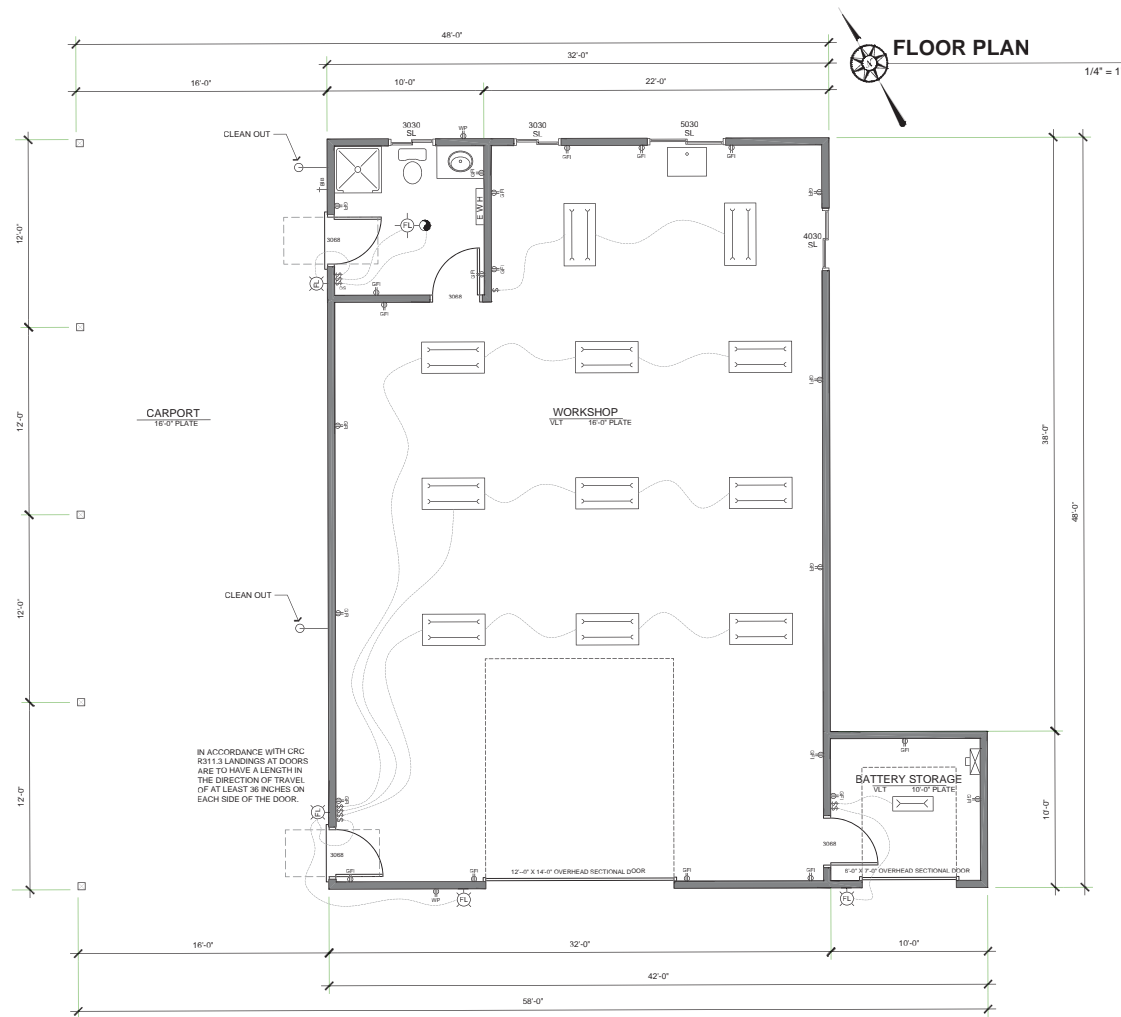
BARN FLOOR PLAN



Sheet 4: Barn Floor Plan
Bigfoot Valley LLC
5145 Calf Canyon Highway
Santa Margarita, CA
APN: 070-174-012/070-174-022

DATE: May 2021	
Bigfoot Valley LLC	
Sheet	
4 of 5	

BARN ELECTRICAL FLOOR PLAN



ELECTRICAL NOTES

1. PROVIDE A 200 AMP MINIMUM ELECTRIC SUB-PANEL WITH #4 UPPER GROUND TO FOUNDATION
2. GFCI OUTLETS ON ALL ABOVE COUNTER OUTLETS IN WORKSHOP MOUNTED AT 44" ABOVE FINISH FLOOR (TYP)
3. GFCI OUTLETS ON ALL ABOVE COUNTER OUTLETS IN BATHROOMS MOUNTED AT 42" ABOVE FINISH FLOOR (TYP)
4. BATHROOM RECEPTACLES SHALL BE ON A SEPARATE 20AMP CIRCUIT WITH NO OTHER OUTLETS BOTH OUTLETS MAY BE ON THE SAME CIRCUIT. 1996 NEC 210-52 (D)
5. WATER-PROOF GFCI OUTLETS AT 18" ABOVE FINISH FLOOR IN FRONT AND REAR OF BUILDING (TYP)
6. PROVIDE SCHEDULE 40 PVC CONDUIT FROM THE LOAD SIDE OF THE NEW ELECTRICAL PANEL DISCONNECT TO ATTIC AREA. CONDUIT SIZE SHALL BE AS FOLLOWS:
 100A 20 AMPS @ 120 VOLTS (1) 1/2" CONDUIT
 120A 24 AMPS @ 120 VOLTS (1) 1/2" CONDUIT
 150A 30 AMPS @ 120 VOLTS (1) 3/4" CONDUIT
 200A 40 AMPS @ 120 VOLTS (1) 1" CONDUIT
 400A 80 AMPS @ 120 VOLTS (1) 1 1/2" CONDUIT

FLOOR PLAN NOTES

1. PROVIDE ON-DEMAND INSTANTANEOUS ELECTRIC WATER HEATER
2. 36" HIGH MIRROR OVER ENTIRE LENGTH OF LAVATORY SET ABOVE BACK SPLASH (TYP).
3. SAFETY GLAZING REQUIRED BUT NOT LIMITED TO GLAZING IN FIXED PANELS ADJACENT TO A DOOR WHERE NEAREST EXPOSED EDGE OF THE GLAZING IS WITHIN A 24" ARC OF EITHER VERTICAL EDGE OF THE DOOR IN A CLOSED POSITION AND WHERE THE BOTTOM EDGE OF THE GLAZING IS LESS THAN 60" ABOVE WALKING SURFACE. CBC SECTION 2406.3 ALSO WITHIN 18" OF FLOORS, WITHIN TUB-SHOWER ENCLOSURES, WITHIN HOT-TUB WHIRLPOOL, SAUNA AND STEAM ROOM AND GLAZING IN ANY PORTION OF A BUILDING WALL ENCLOSING THESE COMPARTMENTS WHERE THE BOTTOM EDGE OF THE GLAZING IS LESS THAN 60" ABOVE A STANDING SURFACE AND DRAIN INLET.
4. PROVIDE SOFT WATER LOOP TIED TO INTERIOR DOMESTIC WATER SYSTEM.
5. ALL HOSE BIBS TO HAVE NON REMOVABLE BACKFLOW PREVENTION DEVICES PER CPC 603.3.7
6. INDIVIDUAL VALVES OF THE PRESSURE BALANCE OR THE THERMOSTATIC MIXING VALVE TYPE ARE REQUIRED AT THE SHOWERS AND TUB-SHOWER COMBINATION PER CPC 420
7. SHOWERS AND WALLS ABOVE BATHTUBS WITH SHOWER HEADS SHALL BE FINISHED WITH A SMOOTH, NONABSORBENT SURFACE TO A HEIGHT NOT LESS THAN 70" ABOVE THE DRAIN INLET. CBC 1210.3
8. ROOMS CONTAINING BATHTUBS, SHOWERS, SPAS AND SIMILAR BATHING FIXTURES SHALL BE MECHANICALLY VENTILATED IN ACCORDANCE WITH THE CMC 403.7.1-4.4
9. IN ACCORDANCE WITH CRC R311.3 LANDINGS AT DOORS ARE TO HAVE A LENGTH IN THE DIRECTION OF TRAVEL OF AT LEAST 36 INCHES ON EACH SIDE OF THE DOOR.

LEGEND

- CEILING MOUNTED EXHAUST FAN TO EXTERIOR
- 115 V GFCI DUPLEX RECEPTACLE
- 115 V WATER PROOF GFCI OUTLET
- SINGLE POLE SWITCH
- SWITCH W/ OCCUPANT SENSOR
- ELECTRIC SUB-PANEL
- HOSE BIB
- HIGH EFFICACY WALL MOUNTED EXTERIOR FIXTURE, DOWNCAST
- FLUORESCENT BAR LIGHT
- 2X4 FLUORESCENT LIGHT FIXTURE
- INSTANTANEOUS ELECTRIC WATER HEATER

DATE: May 2021

Bigfoot Valley LLC

Sheet

5 of 5