

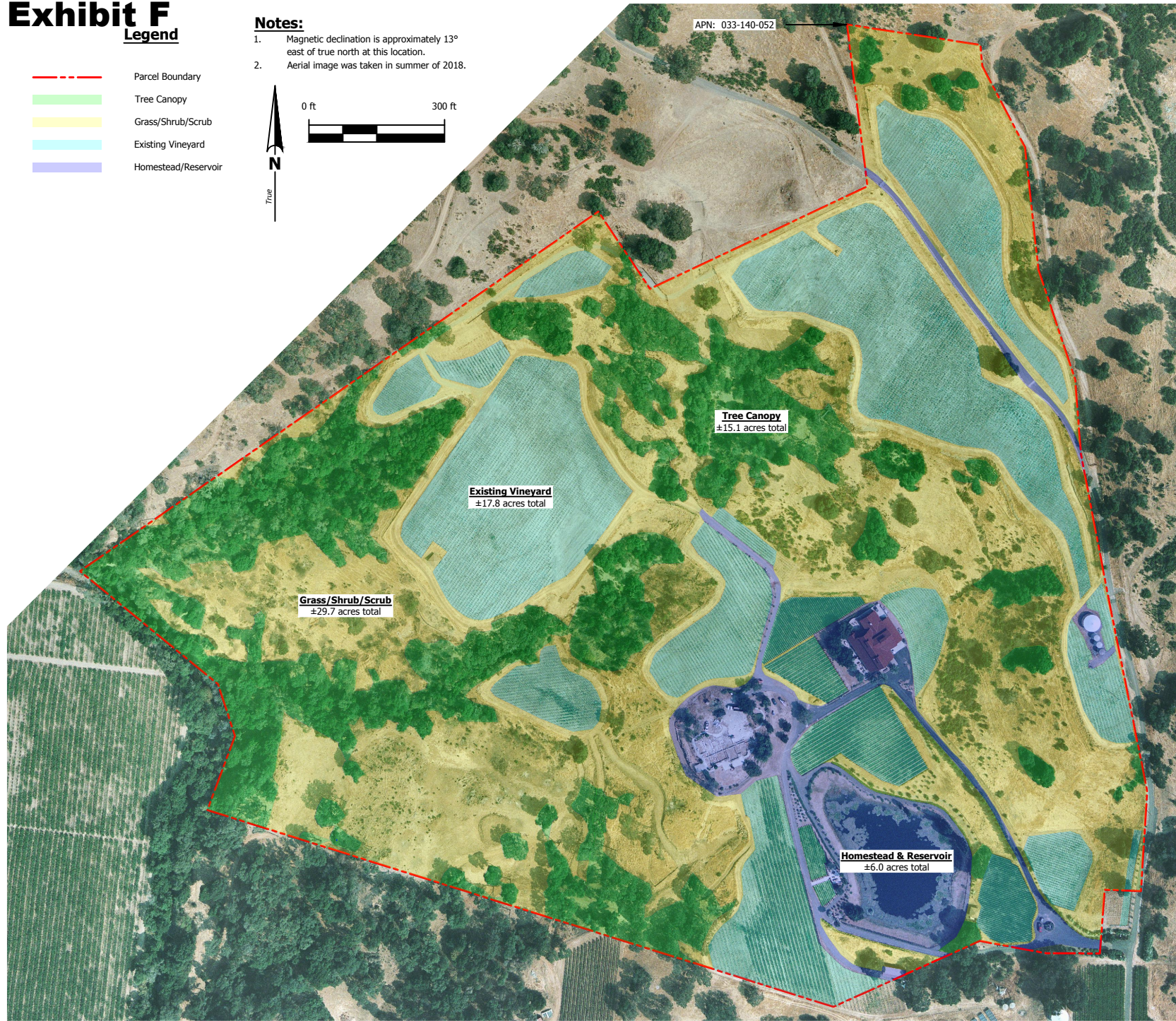
Exhibit F

Legend

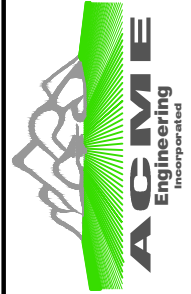
- Parcel Boundary
- Tree Canopy
- Grass/Shrub/Scrub
- Existing Vineyard
- Homestead/Reservoir

Notes:

1. Magnetic declination is approximately 13° east of true north at this location.
2. Aerial image was taken in summer of 2018.



DESIGNED BY	OR	OR
DRAWN BY	OR	OR
CHECKED BY	OR	OR



www.acmeng.com
 1700 Soscol Avenue
 Ste. 9, Napa, CA 94559
 707-253-ACME

QUANTUM LIMIT
VEGETATION CANOPY
PRE-DEVELOPMENT

PROJECT NO.	190101-0104	DATE	10/25/2019
DRAWING NO.	01 01	SCALE	1" = 300'

SHEET **1** OF 2

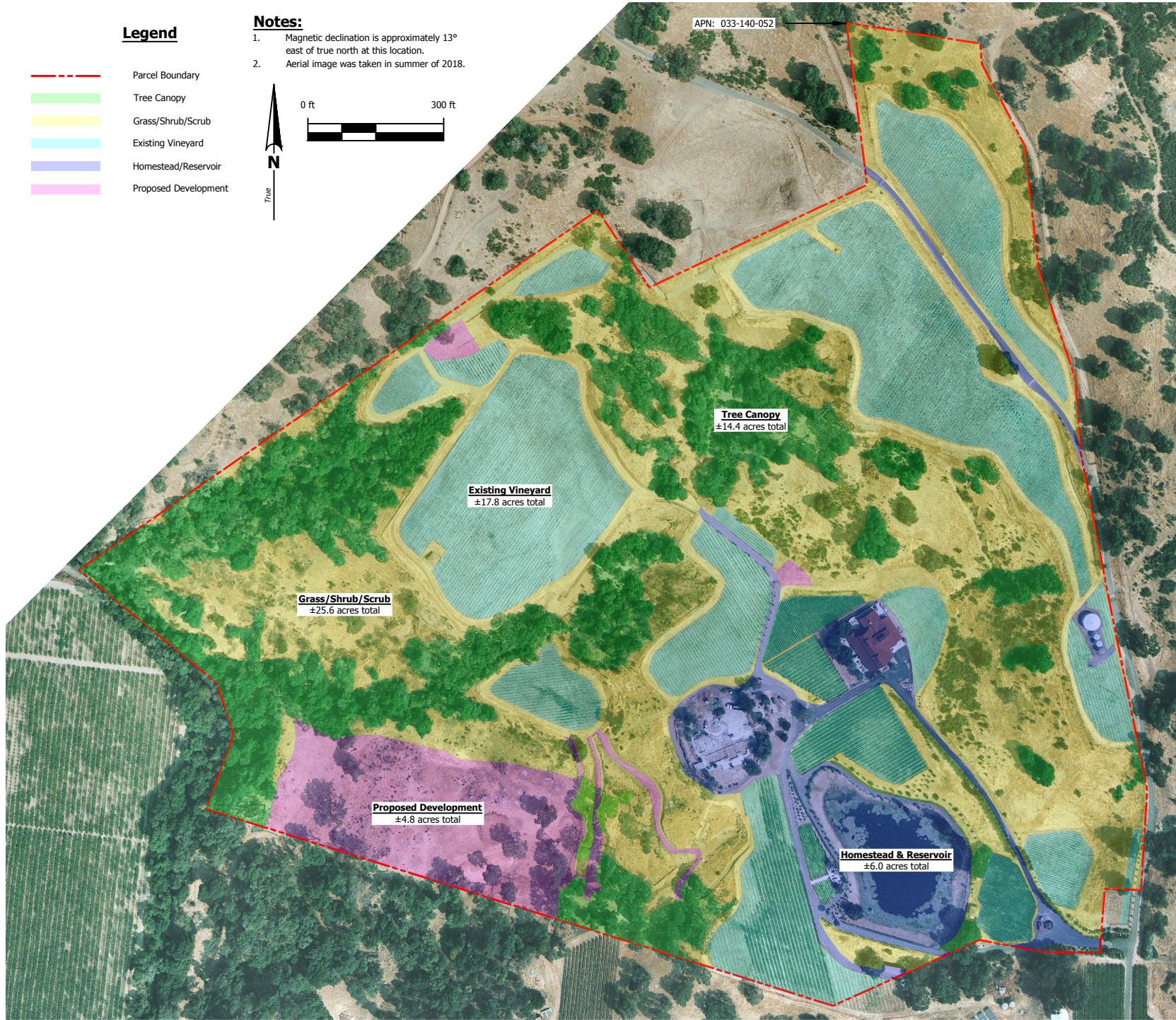
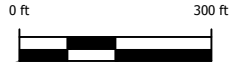
Exhibit F

Legend

- Parcel Boundary
- Tree Canopy
- Grass/Shrub/Scrub
- Existing Vineyard
- Homestead/Reservoir
- Proposed Development

Notes:

1. Magnetic declination is approximately 13° east of true north at this location.
2. Aerial image was taken in summer of 2018.



DESIGNED BY	OR	DRAWN BY	OR
CHECKED BY	OR		



www.acmeng.com
 1700 Soscol Avenue
 Ste. 9, Napa, CA 94559
 707-253-ACME

**QUANTUM LIMIT
 VEGETATION CANOPY
 POST-DEVELOPMENT**

PROJECT NO.	190101-0104	DRAWING NO.	01 02
SCALE	1" = 300'	DATE	10/25/2019

**Quantum Limit Vineyards
New Vineyard Development
Vegetation Retention Analysis**

Predevelopment Conditions (2018 Aerial)

Tree Canopy	15.1	acres
Vineyard	17.8	acres
Homestead/Reservoir	6.0	acres
Grass/Shrub/Scrub	29.7	acres

Areas Disturbed during Development

Tree Canopy to be removed	0.7	acres
Grass/Shrub/Scrub to be removed	4.1	acres
Proposed Development Area	4.8	acres

Post-Development Conditions (2018 Aerial)

Tree Canopy	14.4	acres
Vineyard	22.6	acres
Homestead/Reservoir	6.0	acres
Grass/Shrub/Scrub	25.6	acres

Tree Canopy % Retained	95%
Grass/Shrub/Scrub % Retained	86%