

Appendix B
Arborist Survey Report

Arborist Survey Report

650 NORTH KING ROAD
SAN JOSE, SANTA CLARA COUNTY, CALIFORNIA

Prepared For:

Black Creek Acquisitions
4675 MacArthur Court, Suite 626
Newport Beach, California 92660

Prepared By:

WRA, Inc.
2169-G East Francisco Boulevard
San Rafael, California 94901

Contacts:

Leslie Lazarotti
lazarotti@wra-ca.com

Gavin Albertoli, ISA-Certified Arborist
#WE-12027A
albertoli@wra-ca.com

Date:

September 2020

WRA Project No:

30209



This page intentionally left blank.

TABLE OF CONTENTS

1.0 INTRODUCTION..... 1
 1.1 Project Area Description 1
 1.2 Regulatory Background 1
2.0 METHODS 2
 2.1 Tree Inventory 2
 2.2 Tree Assessment..... 2
3.0 RESULTS..... 3
 3.1 Tree Inventory 3
 3.2 Tree Assessment..... 4
4.0 SUMMARY AND RECOMMENDATIONS 4
 4.1 Tree Protection Avoidance and Minimization Measures..... 5
5.0 REFERENCES..... 6

LIST OF TABLES

Table 1. Rating Narratives for Tree Assessment 3
Table 2. Tree Assessment Results Summary..... 4

APPENDICES

- Appendix A Tree Survey Table
- Appendix B Tree Survey Map
- Appendix C Representative Photographs

1.0 INTRODUCTION

On August 19, 2020, WRA, Inc. (WRA) conducted an arborist survey for the proposed 650 North King Road Project (Project), located in the City of San Jose (City), Santa Clara County County, California. The Project involves the redevelopment of an approximately 10.01-acre site (Project Area). The Project proposes the construction of an approximately 199,830-square-foot warehouse building. The Project Area is located within two adjoining parcels (Assessor Parcel Numbers: 254-54-023 and 254-55-013) located at 650 North King Road in the northeastern portion of the City. Both parcels that compose the Project Area are zoned light industrial. The purpose of the survey was to identify and document the presence of protected trees defined by Chapter 13.32, “Tree Removal Controls”, of the City of San Jose Municipal Code (Tree Ordinance; City of San Jose 2020) within the Project Area.

GPS locations for all trees surveyed within the Project Area and information regarding the species, diameter at breast height (DBH; as measured 4.5 feet above ground), estimated crown radius, estimated height, health, condition, and structure ratings were collected and are included in this report. A table with all relevant information pertaining to surveyed trees is provided in Appendix A. A tree survey location map is provided in Appendix B. Photographs of the Project Area are provided in Appendix C.

1.1 Project Area Description

The Project Area is located approximately 0.5 mile east of Highway 101 and approximately 2.8 miles northeast of downtown San Jose (Google Earth 2020). The entire Project Area consists of developed and/or landscaped land cover. Three existing structures that include a warehouse and offices occupy the majority of the Project Area. The structures are surrounded by paved parking areas and landscaped areas. The Project Area is bordered to the north by industrial warehouses, to the south by Las Plumas Avenue, to the west by North King Road, and to the east by storage units. The Project Area is flat throughout with minimal change in grade. All trees present within the Project Area are located in maintained planting strips and landscaped areas adjacent to paved parking areas and roadways.

1.2 Regulatory Background

City of San Jose Tree Ordinance

San Jose Municipal Code Chapter 13.32, “Tree Removal Controls”, establishes regulations controlling the removal of certain trees on private properties in the city to preserve and protect the economic, aesthetic, and environmental values trees provide to the citizens of San Jose. The San Jose City Council adopted changes to the Tree Ordinance on January 9, 2018, which have come into effect as of February 9, 2018. An ordinance-size tree is defined as:

- **Single Trunk** – 38 inches (12.1 inches diameter) or more in circumference at 4.5 feet above ground.
- **Multi-trunk** – The combined measurements of each trunk circumference (at 4.5 feet above ground) add up to 38 inches or more.

A permit is required for tree removals of any size on multifamily, commercial, and industrial properties. For ordinance-size trees, a tree removal permit application form is required, whereas for non-ordinance-size trees, a permit adjustment application is required. Tree removal permit conditions of approval may require replacement trees to be planted at a ratio determined by the City.

2.0 METHODS

On August 19, 2020, the Project Area was traversed on foot to inventory all trees. WRA's International Society of Arboriculture (ISA)-Certified Arborist, Gavin Albertoli (ISA #WE-12027A), surveyed the area and recorded relevant tree information for each surveyed tree.

2.1 Tree Inventory

Locations of surveyed trees within the Project Area were recorded using a handheld GPS unit capable of sub-meter accuracy. Each surveyed tree was given an aluminum tree tag with a unique identification number. However, in some cases inaccessibility prevented tagging trees. In these cases, the tree was given a unique sequential identification number but the tree was not tagged. Trees that were not tagged show "No tag" in the comment column of the tree survey table (Appendix A).

DBH was calculated for all trees located within the Project Area by measuring the trunk diameter at 4.5 ft. above grade. Diameter for trees that split into multiple trunks at or just below 4.5 feet were measured at the narrowest point beneath the split. DBH for multi-trunked trees was calculated by measuring each individual trunk and calculating the sum total of trunk diameters. In cases where multi-trunked trees had more than five trunks, only the five largest trunks were measured. In cases where an irregular buttress or bulge occurred at 4.5 feet above ground measurements were taken above or below the irregular feature to best represent the size of the tree. In cases where trees were not accessible due to fences, diameter was visually estimated. Tree circumferences were calculated by multiplying the diameter by 3.14. All tree inventory methods follow ISA's tree measurement best practices guidelines. A complete list of all surveyed trees is provided in Appendix A.

2.2 Tree Assessment

General notes on the condition of trees were taken, including health, structure, and overall condition. Assessment of the health, structure, and overall condition of each tree was conducted according to the narratives listed in Table 1.

Table 1. Rating Narratives for Tree Assessment

Health	
Good	Tree is free from symptoms of disease and stress
Fair	Tree shows some symptoms of disease or stress including twig and small branch dieback, evidence of fungal / parasitic infection, thinning of crown, or poor leaf color
Poor	Tree shows symptoms of severe decline
Structure	
Good	Tree is free from major structural defects
Fair	Tree shows some structural defects in branches but overall structure is stable
Poor	Tree shows structural failure of a major branch or co-dominant trunk
General Condition	
Good	Tree shows condition of foliage, bark, and overall structure characteristic of the species and lacking obvious defect, or disease
Fair	Tree shows condition of foliage, bark, and overall structure characteristic of the species with some evidence of stress, defect, or disease
Poor	Tree shows condition of foliage, bark, and overall structure uncharacteristic of the species with obvious evidence of stress, defect, or disease

3.0 RESULTS

3.1 Tree Inventory

A total of 163 trees were identified within the Project Area. Tree species surveyed included tree of heaven (*Ailanthus altissima*; five total), plume acacia (*Albizia lophantha*; two total), camphor tree (*Cinnamomum camphora*; two total), hop bush (*Dodonaea viscosa*; two total), Raywood ash (*Fraxinus angustifolia* 'Raywood'; nine total), evergreen ash (*Fraxinus uhdei*; six total), glossy privet (*Ligustrum lucidum*; two total), white mulberry (*Morus alba*; one total), common myrtle (*Myrtus communis*; 25 total), olive tree (*Olea europaea*; 15 total), Canary Island pine (*Pinus canariensis*; three total), Chinese pistache (*Pistacia chinensis*; one total), evergreen ash (*Fraxinus uhdei*; six total), Lombardy poplar (*Populus nigra*; four total), cherry plum (*Prunus cerasifera*; seven total), flowering ornamental pear (*Pyrus calleryana*; one total), interior live oak (*Quercus wislizeni*; nine total), and Mexican fan palm (*Washingtonia robusta*; 71 total). Of the 163 trees surveyed, 122 are considered ordinance-size trees per the City Tree Ordinance.

The trees surveyed in the Project Area ranged in size from 12.2 to 180.6 inches in circumference. The largest tree surveyed was a 180.6-inch circumference Mexican fan palm (Tree #256). Approximate canopy radii of all surveyed trees averaged from 4 to 30 feet. Approximate height of all surveyed trees ranged from 10 to 65 feet. A complete list of all trees surveyed is presented in Appendix A. The GPS locations of surveyed trees are shown on Figure 1, Appendix B. Photographs taken during the survey are provided in Appendix C.

3.2 Tree Assessment

The overall condition, health, and structure of trees inventoried during this assessment ranged from poor to good, with most trees ranking fair in all categories.

- Ninety-two (92) percent of the trees surveyed within the Project Area ranked fair in general condition with most trees displaying little to no signs of maladies or decline in vigor.
- Ninety-two (92) percent of the trees ranked fair in health with five (5) percent ranking good, further indicating the large quantity of visibly healthy trees surveyed in the Project Area.
- Eighty-six (86) percent of trees surveyed ranked fair in structure, with 11 percent of the trees surveyed ranking poor, mostly due to having poor growth forms due to previous poor pruning. Trees that received a poor structure rating had excessive, uncorrected leans, visible mechanical injuries, or other structural defects.

Table 2 below summarizes the assessment results for all trees surveyed.

Table 2. Tree Assessment Results Summary

Criteria Assessed/Rating	Condition (Tree Count [Percent])	Health (Tree Count [Percent])	Structure (Tree Count [Percent])
Good	8 (5)	8 (5)	4 (3)
Fair	151 (92)	151 (92)	141 (86)
Poor	4 (3)	4 (3)	18 (11)

Potential permit, mitigation, and tree protection requirements as required by the Tree Ordinance are provided below.

4.0 SUMMARY AND RECOMMENDATIONS

A total of 163 trees were inventoried during this assessment, including 122 ordinance-size trees protected by the San Jose Tree Ordinance. If any of the 163 trees within the Project Area are required to be removed to accommodate the Project, approval through the City will be required. Because the Project Area is located entirely within properties zoned as light industrial, any anticipated direct or indirect impact to any of the trees within the Project Area will require approval through the City.

For proposed impacts to ordinance-size trees, a tree removal permit application form shall be required, whereas for non-ordinance-size trees, a permit adjustment application shall be required. Tree removal permit conditions of approval for ordinance-size trees require replacement trees to be planted typically at a ratio of 1 to 1 (one replacement tree for one removed tree) or at another ratio determined by the City. There are no replacement requirements for non-ordinance-size trees. A tree removal permit fee based on the current fee schedule will also be required when the application form is submitted.

WRA recommends that any ordinance-size tree identified for potential removal is replaced onsite with a native tree species.

4.1 Tree Protection Avoidance and Minimization Measures

To avoid and minimize damage to existing trees that are not proposed for direct impact by Project activities, the following measures are recommended to be implemented during construction:

- Caution shall be taken when conducting construction activities (grading, filling, paving, etc.) in close proximity to the root protection zone (RPZ) around all protected trees within the vicinity of the Project Area that are not proposed for removal. The RPZ should be a distance of 1.0 times the dripline radius measured from the trunk of the tree. Exception to this standard could be considered on a case-by-case basis, provided that it is demonstrated that an encroachment into the RPZ will not affect the root system or the health of the tree, and is authorized by an ISA-Certified Arborist or comparable specialist.
- Temporary protective fencing shall be installed around the dripline of existing protected trees prior to commencement of any construction activity conducted within 25 feet of the tree canopy. The fence shall be clearly marked to prevent inadvertent encroachment by heavy machinery.
- Drainage shall not be allowed to pond around the base of any protected tree.
- An ISA-Certified Arborist or tree specialist shall be retained to perform any necessary pruning of trees during construction activity.
- Roots exposed, as a result of construction activities, shall be covered with wet burlap to avoid desiccation, and should be buried as soon as practicable.
- Construction materials or heavy equipment shall not be stored within the RPZ of protected trees.
- Only an ISA-Certified Arborist, or comparable specialist, shall make specific recommendations as to where any existing trees can safely tolerate some level of fill within the drip line.
- Trenching within RPZ shall be done under the field supervision of an ISA-Certified Arborist and shall be hand dug as much as possible in addition to using auger or drill.
- Construction materials shall be properly stored away from existing protected trees to avoid spillage or damage to trees.

5.0 REFERENCES

Google Earth. 2020. Aerial Photography 1993-2020.

City of San Jose. 2020. Chapter 13.32, "Tree Removal Controls" (Tree Ordinance) of the City of San Jose Municipal Code. Available online at: https://www.codepublishing.com/CA/san_jose/. Most recently accessed: August 2020.

APPENDIX A

TREE SURVEY TABLE

This page intentionally left blank.

Appendix A. 650 North Kind Road, San Jose, Tree Survey Table, August 2020

Tag ID	Species	Common Name	Multi-stem	DBH 1	DBH 2	DBH 3	DBH 4	DBH 5	Total DBH (inches)	Total Circumference (inches)	Ordinance Status	Comment	Dripline (feet)	Height (feet)	Condition	Health	Structure
110	<i>Cinnamomum camphora</i>	camphor tree	No	18.4	0.0	0.0	0.0	0.0	18.4	57.8	ordinance-size tree		20	35	Good	Good	Fair
111	<i>Cinnamomum camphora</i>	camphor tree	No	11.6	0.0	0.0	0.0	0.0	11.6	36.4	non-ordinance-size tree		15	30	Good	Good	Good
112	<i>Pinus canariensis</i>	Canary Island pine	No	16.5	0.0	0.0	0.0	0.0	16.5	51.8	ordinance-size tree		18	40	Fair	Fair	Fair
113	<i>Pinus canariensis</i>	Canary Island pine	No	11.5	0.0	0.0	0.0	0.0	11.5	36.1	non-ordinance-size tree		8	35	Fair	Fair	Fair
114	<i>Pinus canariensis</i>	Canary Island pine	No	15.5	0.0	0.0	0.0	0.0	15.5	48.7	ordinance-size tree		12	45	Fair	Fair	Poor
115	<i>Prunus cerasifera</i>	cherry plum	Yes	5.0	6.1	3.4	0.0	0.0	14.5	45.5	ordinance-size tree		8	18	Fair	Fair	Fair
116	<i>Prunus cerasifera</i>	cherry plum	Yes	3.6	4.9	4.0	5.2	0.0	17.7	55.6	ordinance-size tree		8	20	Fair	Fair	Poor
117	<i>Washingtonia robusta</i>	Mexican fan palm	No	15.5	0.0	0.0	0.0	0.0	15.5	48.7	ordinance-size tree		6	55	Fair	Fair	Fair
118	<i>Washingtonia robusta</i>	Mexican fan palm	No	14.6	0.0	0.0	0.0	0.0	14.6	45.8	ordinance-size tree		6	50	Fair	Fair	Fair
119	<i>Washingtonia robusta</i>	Mexican fan palm	No	17.6	0.0	0.0	0.0	0.0	17.6	55.3	ordinance-size tree		8	60	Fair	Fair	Fair
120	<i>Washingtonia robusta</i>	Mexican fan palm	No	20.9	0.0	0.0	0.0	0.0	20.9	65.6	ordinance-size tree		9	65	Fair	Fair	Fair
121	<i>Washingtonia robusta</i>	Mexican fan palm	No	15.2	0.0	0.0	0.0	0.0	15.2	47.7	ordinance-size tree		8	60	Fair	Fair	Fair
122	<i>Washingtonia robusta</i>	Mexican fan palm	No	19.8	0.0	0.0	0.0	0.0	19.8	62.2	ordinance-size tree		6	55	Fair	Fair	Fair
123	<i>Washingtonia robusta</i>	Mexican fan palm	No	17.9	0.0	0.0	0.0	0.0	17.9	56.2	ordinance-size tree		8	50	Fair	Fair	Fair
124	<i>Washingtonia robusta</i>	Mexican fan palm	No	20.6	0.0	0.0	0.0	0.0	20.6	64.7	ordinance-size tree		10	45	Fair	Fair	Poor
125	<i>Washingtonia robusta</i>	Mexican fan palm	No	15.8	0.0	0.0	0.0	0.0	15.8	49.6	ordinance-size tree		10	45	Fair	Fair	Fair
126	<i>Washingtonia robusta</i>	Mexican fan palm	No	15.0	0.0	0.0	0.0	0.0	15.0	47.1	ordinance-size tree		10	45	Fair	Fair	Fair
127	<i>Washingtonia robusta</i>	Mexican fan palm	Yes	18.9	8.1	0.0	0.0	0.0	27.0	84.8	ordinance-size tree		12	50	Fair	Fair	Fair
128	<i>Washingtonia robusta</i>	Mexican fan palm	No	16.8	0.0	0.0	0.0	0.0	16.8	52.8	ordinance-size tree		8	50	Fair	Fair	Fair
129	<i>Washingtonia robusta</i>	Mexican fan palm	No	17.5	0.0	0.0	0.0	0.0	17.5	55.0	ordinance-size tree		10	45	Fair	Fair	Fair
130	<i>Washingtonia robusta</i>	Mexican fan palm	No	15.5	0.0	0.0	0.0	0.0	15.5	48.7	ordinance-size tree		10	45	Fair	Fair	Fair
131	<i>Fraxinus uhdei</i>	evergreen ash	No	10.5	0.0	0.0	0.0	0.0	10.5	33.0	non-ordinance-size tree		15	35	Fair	Fair	Fair
132	<i>Washingtonia robusta</i>	Mexican fan palm	No	15.8	0.0	0.0	0.0	0.0	15.8	49.6	ordinance-size tree		8	50	Fair	Fair	Fair
133	<i>Washingtonia robusta</i>	Mexican fan palm	No	16.3	0.0	0.0	0.0	0.0	16.3	51.2	ordinance-size tree		8	50	Fair	Fair	Fair
134	<i>Washingtonia robusta</i>	Mexican fan palm	No	16.5	0.0	0.0	0.0	0.0	16.5	51.8	ordinance-size tree		8	40	Fair	Fair	Poor
135	<i>Washingtonia robusta</i>	Mexican fan palm	No	19.5	0.0	0.0	0.0	0.0	19.5	61.2	ordinance-size tree		8	50	Fair	Fair	Fair
136	<i>Washingtonia robusta</i>	Mexican fan palm	No	18.6	0.0	0.0	0.0	0.0	18.6	58.4	ordinance-size tree		6	45	Fair	Fair	Fair
137	<i>Washingtonia robusta</i>	Mexican fan palm	No	19.4	0.0	0.0	0.0	0.0	19.4	60.9	ordinance-size tree		8	45	Fair	Fair	Fair
138	<i>Washingtonia robusta</i>	Mexican fan palm	No	20.6	0.0	0.0	0.0	0.0	20.6	64.7	ordinance-size tree		8	40	Fair	Fair	Fair
139	<i>Washingtonia robusta</i>	Mexican fan palm	No	18.8	0.0	0.0	0.0	0.0	18.8	59.0	ordinance-size tree		8	40	Fair	Fair	Fair
140	<i>Washingtonia robusta</i>	Mexican fan palm	No	20.3	0.0	0.0	0.0	0.0	20.3	63.7	ordinance-size tree		8	40	Fair	Fair	Fair
141	<i>Washingtonia robusta</i>	Mexican fan palm	No	21.2	0.0	0.0	0.0	0.0	21.2	66.6	ordinance-size tree		8	45	Fair	Fair	Fair
142	<i>Washingtonia robusta</i>	Mexican fan palm	No	20.5	0.0	0.0	0.0	0.0	20.5	64.4	ordinance-size tree		8	45	Fair	Fair	Fair
143	<i>Washingtonia robusta</i>	Mexican fan palm	No	19.0	0.0	0.0	0.0	0.0	19.0	59.7	ordinance-size tree		8	45	Fair	Fair	Fair
144	<i>Washingtonia robusta</i>	Mexican fan palm	No	19.2	0.0	0.0	0.0	0.0	19.2	60.3	ordinance-size tree		8	40	Fair	Fair	Fair
145	<i>Albizia lophantha</i>	plume acacia	Yes	8.1	7.5	7.7	5.6	6.3	35.2	110.5	ordinance-size tree		28	30	Fair	Fair	Fair
146	<i>Washingtonia robusta</i>	Mexican fan palm	No	17.9	0.0	0.0	0.0	6.3	24.2	76.0	ordinance-size tree		6	35	Fair	Fair	Fair
147	<i>Ailanthus altissima</i>	tree of heaven	No	4.3	0.0	0.0	0.0	0.0	4.3	13.5	non-ordinance-size tree		5	18	Fair	Fair	Poor
148	<i>Populus nigra</i>	Lombardy poplar	No	29.6	0.0	0.0	0.0	0.0	29.6	92.9	ordinance-size tree		25	40	Fair	Fair	Fair
149	<i>Albizia lophantha</i>	plume acacia	Yes	5.5	5.5	0.0	0.0	0.0	11.0	34.5	non-ordinance-size tree		15	20	Fair	Fair	Fair
150	<i>Washingtonia robusta</i>	Mexican fan palm	No	18.5	0.0	0.0	0.0	0.0	18.5	58.1	ordinance-size tree		8	40	Fair	Fair	Fair
151	<i>Washingtonia robusta</i>	Mexican fan palm	No	18.3	0.0	0.0	0.0	0.0	18.3	57.5	ordinance-size tree		6	35	Fair	Fair	Fair
152	<i>Quercus wislizeni</i>	interior live oak	Yes	13.2	6.1	5.8	0.0	0.0	25.1	78.8	ordinance-size tree		20	35	Fair	Fair	Poor
153	<i>Washingtonia robusta</i>	Mexican fan palm	No	19.2	0.0	0.0	0.0	0.0	19.2	60.3	ordinance-size tree		6	40	Fair	Fair	Fair
154	<i>Quercus wislizeni</i>	interior live oak	No	6.9	0.0	0.0	0.0	0.0	6.9	21.7	non-ordinance-size tree		15	25	Fair	Fair	Poor
155	<i>Washingtonia robusta</i>	Mexican fan palm	No	20.4	0.0	0.0	0.0	0.0	20.4	64.1	ordinance-size tree		6	38	Fair	Fair	Fair
156	<i>Ailanthus altissima</i>	tree of heaven	No	18.1	0.0	0.0	0.0	0.0	18.1	56.8	ordinance-size tree		20	35	Fair	Fair	Fair
157	<i>Ailanthus altissima</i>	tree of heaven	No	7.8	0.0	0.0	0.0	0.0	7.8	24.5	non-ordinance-size tree		18	30	Fair	Fair	Poor
158	<i>Ailanthus altissima</i>	tree of heaven	Yes	4.3	4.9	0.0	0.0	0.0	9.2	28.9	non-ordinance-size tree		10	20	Fair	Fair	Poor
159	<i>Olea europaea</i>	olive tree	No	10.8	0.0	0.0	0.0	0.0	10.8	33.9	non-ordinance-size tree		12	25	Fair	Fair	Fair
160	<i>Washingtonia robusta</i>	Mexican fan palm	Yes	22.2	21.0	0.0	0.0	0.0	43.2	135.6	ordinance-size tree		15	45	Fair	Fair	Fair
161	<i>Washingtonia robusta</i>	Mexican fan palm	No	23.4	0.0	0.0	0.0	0.0	23.4	73.5	ordinance-size tree		8	45	Fair	Fair	Fair

Appendix A. 650 North Kind Road, San Jose, Tree Survey Table, August 2020

Tag ID	Species	Common Name	Multi-stem	DBH 1	DBH 2	DBH 3	DBH 4	DBH 5	Total DBH (inches)	Total Circumference (inches)	Ordinance Status	Comment	Dripline (feet)	Height (feet)	Condition	Health	Structure
162	<i>Quercus wislizeni</i>	interior live oak	No	7.7	0.0	0.0	0.0	0.0	7.7	24.2	non-ordinance-size tree		15	25	Fair	Fair	Fair
163	<i>Olea europaea</i>	olive tree	No	6.0	0.0	0.0	0.0	0.0	6.0	18.8	non-ordinance-size tree		8	20	Fair	Fair	Fair
164	<i>Dodonaea viscosa</i>	hop bush	Yes	3.1	3.0	2.9	1.2	0.0	10.2	32.0	non-ordinance-size tree		5	15	Fair	Fair	Poor
165	<i>Quercus wislizeni</i>	interior live oak	No	5.6	0.0	0.0	0.0	0.0	5.6	17.6	non-ordinance-size tree		8	20	Fair	Fair	Fair
166	<i>Olea europaea</i>	olive tree	Yes	6.4	9.5	0.0	0.0	0.0	15.9	49.9	ordinance-size tree		10	25	Fair	Fair	Fair
167	<i>Quercus wislizeni</i>	interior live oak	No	8.1	0.0	0.0	0.0	0.0	8.1	25.4	non-ordinance-size tree		10	25	Fair	Fair	Fair
168	<i>Quercus wislizeni</i>	interior live oak	Yes	7.6	6.1	0.0	0.0	0.0	13.7	43.0	ordinance-size tree		8	25	Fair	Fair	Fair
169	<i>Quercus wislizeni</i>	interior live oak	No	3.9	0.0	0.0	0.0	0.0	3.9	12.2	non-ordinance-size tree		6	20	Fair	Fair	Fair
170	<i>Olea europaea</i>	olive tree	Yes	9.8	5.4	5.3	5.1	3.9	29.5	92.6	ordinance-size tree		15	25	Fair	Fair	Fair
171	<i>Olea europaea</i>	olive tree	Yes	11.5	9.7	0.0	0.0	0.0	21.2	66.6	ordinance-size tree		16	25	Fair	Fair	Fair
172	<i>Pistacia chinensis</i>	Chinese pistache	Yes	8.1	8.0	0.0	0.0	0.0	16.1	50.6	ordinance-size tree		18	25	Fair	Fair	Fair
173	<i>Olea europaea</i>	olive tree	Yes	7.1	4.7	4.5	6.5	5.1	27.9	87.6	ordinance-size tree		16	20	Fair	Fair	Fair
174	<i>Olea europaea</i>	olive tree	Yes	5.9	5.1	4.2	2.3	0.0	17.5	54.9	ordinance-size tree		10	20	Fair	Fair	Fair
175	<i>Quercus wislizeni</i>	interior live oak	Yes	9.9	8.0	0.0	0.0	0.0	17.9	56.2	ordinance-size tree		15	35	Fair	Fair	Fair
176	<i>Myrtus communis</i>	common myrtle	No	8.6	0.0	0.0	0.0	0.0	8.6	27.0	non-ordinance-size tree		8	18	Fair	Fair	Fair
177	<i>Myrtus communis</i>	common myrtle	Yes	6.7	4.8	2.5	0.0	0.0	14.0	44.0	ordinance-size tree		6	15	Poor	Poor	Fair
178	<i>Myrtus communis</i>	common myrtle	No	4.3	0.0	0.0	0.0	0.0	4.3	13.5	non-ordinance-size tree		6	12	Fair	Fair	Fair
179	<i>Myrtus communis</i>	common myrtle	No	6.7	0.0	0.0	0.0	0.0	6.7	21.0	non-ordinance-size tree		5	15	Fair	Fair	Fair
180	<i>Myrtus communis</i>	common myrtle	No	8.2	0.0	0.0	0.0	0.0	8.2	25.7	non-ordinance-size tree		8	20	Fair	Fair	Fair
181	<i>Myrtus communis</i>	common myrtle	Yes	6.4	5.3	0.0	0.0	0.0	11.7	36.7	non-ordinance-size tree		7	20	Fair	Fair	Fair
182	<i>Olea europaea</i>	olive tree	Yes	10.2	8.7	0.0	0.0	0.0	18.9	59.3	ordinance-size tree	no tag	12	30	Fair	Fair	Fair
183	<i>Dodonaea viscosa</i>	hop bush	Yes	6.2	7.3	0.0	0.0	0.0	13.5	42.4	ordinance-size tree		15	20	Fair	Fair	Fair
184	<i>Ailanthus altissima</i>	tree of heaven	No	8.8	0.0	0.0	0.0	0.0	8.8	27.6	non-ordinance-size tree		15	35	Good	Good	Fair
185	<i>Quercus wislizeni</i>	interior live oak	No	6.4	0.0	0.0	0.0	0.0	6.4	20.1	non-ordinance-size tree		10	30	Poor	Poor	Poor
186	<i>Pyrus calleryana</i>	flowering ornamental pear	Yes	5.2	3.9	0.0	0.0	0.0	9.1	28.6	non-ordinance-size tree		12	20	Fair	Fair	Fair
187	<i>Washingtonia robusta</i>	Mexican fan palm	No	22.3	0.0	0.0	0.0	0.0	22.3	70.0	ordinance-size tree		8	45	Fair	Fair	Fair
188	<i>Washingtonia robusta</i>	Mexican fan palm	No	17.1	0.0	0.0	0.0	0.0	17.1	53.7	ordinance-size tree		6	45	Fair	Fair	Fair
189	<i>Washingtonia robusta</i>	Mexican fan palm	No	18.9	0.0	0.0	0.0	0.0	18.9	59.3	ordinance-size tree		6	50	Fair	Fair	Fair
190	<i>Washingtonia robusta</i>	Mexican fan palm	No	37.9	0.0	0.0	0.0	0.0	37.9	119.0	ordinance-size tree		15	30	Fair	Fair	Fair
191	<i>Washingtonia robusta</i>	Mexican fan palm	No	22.0	0.0	0.0	0.0	0.0	22.0	69.1	ordinance-size tree		8	40	Fair	Fair	Fair
192	<i>Washingtonia robusta</i>	Mexican fan palm	No	20.4	0.0	0.0	0.0	0.0	20.4	64.1	ordinance-size tree		8	40	Fair	Fair	Fair
193	<i>Washingtonia robusta</i>	Mexican fan palm	No	18.7	0.0	0.0	0.0	0.0	18.7	58.7	ordinance-size tree		8	50	Fair	Fair	Fair
194	<i>Washingtonia robusta</i>	Mexican fan palm	Yes	18.9	17.1	0.0	0.0	0.0	36.0	113.0	ordinance-size tree		12	30	Fair	Fair	Fair
195	<i>Washingtonia robusta</i>	Mexican fan palm	No	12.5	0.0	0.0	0.0	0.0	12.5	39.3	ordinance-size tree		6	15	Fair	Fair	Fair
196	<i>Washingtonia robusta</i>	Mexican fan palm	No	19.3	0.0	0.0	0.0	0.0	19.3	60.6	ordinance-size tree		8	40	Fair	Fair	Fair
197	<i>Washingtonia robusta</i>	Mexican fan palm	No	20.2	0.0	0.0	0.0	0.0	20.2	63.4	ordinance-size tree		8	40	Fair	Fair	Fair
198	<i>Washingtonia robusta</i>	Mexican fan palm	No	23.1	0.0	0.0	0.0	0.0	23.1	72.5	ordinance-size tree		8	35	Fair	Fair	Fair
199	<i>Washingtonia robusta</i>	Mexican fan palm	No	18.8	0.0	0.0	0.0	0.0	18.8	59.0	ordinance-size tree		10	28	Fair	Fair	Fair
200	<i>Washingtonia robusta</i>	Mexican fan palm	No	17.3	0.0	0.0	0.0	0.0	17.3	54.3	ordinance-size tree		6	55	Fair	Fair	Fair
201	<i>Washingtonia robusta</i>	Mexican fan palm	No	17.1	0.0	0.0	0.0	0.0	17.1	53.7	ordinance-size tree		6	55	Fair	Fair	Fair
202	<i>Washingtonia robusta</i>	Mexican fan palm	No	16.4	0.0	0.0	0.0	0.0	16.4	51.5	ordinance-size tree		10	25	Fair	Fair	Fair
203	<i>Washingtonia robusta</i>	Mexican fan palm	No	18.5	0.0	0.0	0.0	0.0	18.5	58.1	ordinance-size tree		6	55	Fair	Fair	Fair
204	<i>Fraxinus uhdei</i>	evergreen ash	No	17.6	0.0	0.0	0.0	0.0	17.6	55.3	ordinance-size tree		18	50	Fair	Fair	Poor
205	<i>Fraxinus uhdei</i>	evergreen ash	No	35.6	0.0	0.0	0.0	0.0	35.6	111.8	ordinance-size tree		20	55	Good	Good	Good
206	<i>Washingtonia robusta</i>	Mexican fan palm	No	14.6	0.0	0.0	0.0	0.0	14.6	45.8	ordinance-size tree		6	18	Fair	Fair	Fair
207	<i>Washingtonia robusta</i>	Mexican fan palm	No	18.4	0.0	0.0	0.0	0.0	18.4	57.8	ordinance-size tree		6	50	Fair	Fair	Fair
208	<i>Washingtonia robusta</i>	Mexican fan palm	No	15.5	0.0	0.0	0.0	0.0	15.5	48.7	ordinance-size tree		6	20	Fair	Fair	Fair
209	<i>Washingtonia robusta</i>	Mexican fan palm	No	17.9	0.0	0.0	0.0	0.0	17.9	56.2	ordinance-size tree		8	50	Fair	Fair	Fair
210	<i>Washingtonia robusta</i>	Mexican fan palm	No	20.4	0.0	0.0	0.0	0.0	20.4	64.1	ordinance-size tree		8	50	Fair	Fair	Fair
211	<i>Washingtonia robusta</i>	Mexican fan palm	No	15.0	0.0	0.0	0.0	0.0	15.0	47.1	ordinance-size tree		6	40	Fair	Fair	Fair
212	<i>Prunus cerasifera</i>	cherry plum	Yes	6.0	6.5	5.0	0.0	0.0	17.5	55.0	ordinance-size tree		8	20	Fair	Fair	Fair
213	<i>Fraxinus uhdei</i>	evergreen ash	Yes	17.8	16.0	17.1	0.0	0.0	50.9	159.8	ordinance-size tree		20	55	Good	Good	Fair

Appendix A. 650 North Kind Road, San Jose, Tree Survey Table, August 2020

Tag ID	Species	Common Name	Multi-stem	DBH 1	DBH 2	DBH 3	DBH 4	DBH 5	Total DBH (inches)	Total Circumference (inches)	Ordinance Status	Comment	Dripline (feet)	Height (feet)	Condition	Health	Structure
214	<i>Fraxinus uhdei</i>	evergreen ash	No	28.6	0.0	0.0	0.0	0.0	28.6	89.8	ordinance-size tree		18	50	Good	Good	Good
215	<i>Fraxinus uhdei</i>	evergreen ash	No	32.8	0.0	0.0	0.0	0.0	32.8	103.0	ordinance-size tree		30	55	Good	Good	Good
216	<i>Olea europaea</i>	olive tree	Yes	11.0	7.3	9.1	0.0	0.0	27.4	86.0	ordinance-size tree		12	30	Fair	Fair	Fair
217	<i>Washingtonia robusta</i>	Mexican fan palm	No	17.3	0.0	0.0	0.0	0.0	17.3	54.3	ordinance-size tree		8	40	Fair	Fair	Fair
218	<i>Washingtonia robusta</i>	Mexican fan palm	No	18.5	0.0	0.0	0.0	0.0	18.5	58.1	ordinance-size tree		8	45	Fair	Fair	Fair
219	<i>Fraxinus angustifolia</i> 'Raywood'	Raywood ash	No	16.3	0.0	0.0	0.0	0.0	16.3	51.2	ordinance-size tree		20	40	Fair	Fair	Fair
220	<i>Olea europaea</i>	olive tree	Yes	10.6	12.5	0.0	0.0	0.0	23.1	72.5	ordinance-size tree		10	30	Fair	Fair	Fair
221	<i>Washingtonia robusta</i>	Mexican fan palm	No	16.6	0.0	0.0	0.0	0.0	16.6	52.1	ordinance-size tree		6	45	Fair	Fair	Fair
222	<i>Washingtonia robusta</i>	Mexican fan palm	No	18.7	0.0	0.0	0.0	0.0	18.7	58.7	ordinance-size tree		6	50	Fair	Fair	Fair
223	<i>Fraxinus angustifolia</i> 'Raywood'	Raywood ash	No	17.7	0.0	0.0	0.0	0.0	17.7	55.6	ordinance-size tree		15	35	Fair	Fair	Fair
224	<i>Fraxinus angustifolia</i> 'Raywood'	Raywood ash	No	12.5	0.0	0.0	0.0	0.0	12.5	39.3	ordinance-size tree		15	30	Fair	Fair	Poor
225	<i>Fraxinus angustifolia</i> 'Raywood'	Raywood ash	No	20.0	0.0	0.0	0.0	0.0	20.0	62.8	ordinance-size tree		25	30	Good	Good	Fair
226	<i>Myrtus communis</i>	common myrtle	Yes	10.0	6.6	7.7	0.0	0.0	24.3	76.3	ordinance-size tree		20	25	Fair	Fair	Fair
227	<i>Myrtus communis</i>	common myrtle	Yes	10.5	10.5	11.6	0.0	0.0	32.6	102.4	ordinance-size tree		20	25	Fair	Fair	Fair
228	<i>Myrtus communis</i>	common myrtle	Yes	11.8	7.9	0.0	0.0	0.0	19.7	61.9	ordinance-size tree		18	25	Fair	Fair	Fair
229	<i>Myrtus communis</i>	common myrtle	Yes	13.3	10.4	0.0	0.0	0.0	23.7	74.4	ordinance-size tree		18	25	Fair	Fair	Fair
230	<i>Myrtus communis</i>	common myrtle	No	15.8	0.0	0.0	0.0	0.0	15.8	49.6	ordinance-size tree		18	25	Fair	Fair	Fair
231	<i>Myrtus communis</i>	common myrtle	Yes	13.5	10.1	9.5	0.0	0.0	33.1	103.9	ordinance-size tree		18	25	Fair	Fair	Fair
232	<i>Fraxinus angustifolia</i> 'Raywood'	Raywood ash	No	21.3	0.0	0.0	0.0	0.0	21.3	66.9	ordinance-size tree		10	30	Fair	Fair	Poor
233	<i>Fraxinus angustifolia</i> 'Raywood'	Raywood ash	No	18.6	0.0	0.0	0.0	0.0	18.6	58.4	ordinance-size tree		15	30	Fair	Fair	Poor
234	<i>Fraxinus angustifolia</i> 'Raywood'	Raywood ash	No	14.5	0.0	0.0	0.0	0.0	14.5	45.5	ordinance-size tree		15	25	Fair	Fair	Fair
235	<i>Prunus cerasifera</i>	cherry plum	Yes	7.0	7.2	0.0	0.0	0.0	14.2	44.6	ordinance-size tree		8	20	Fair	Fair	Fair
236	<i>Prunus cerasifera</i>	cherry plum	Yes	9.0	5.9	4.9	0.0	0.0	19.8	62.2	ordinance-size tree		8	20	Fair	Fair	Fair
237	<i>Prunus cerasifera</i>	cherry plum	Yes	7.0	6.7	0.0	0.0	0.0	13.7	43.0	ordinance-size tree		8	20	Fair	Fair	Fair
238	<i>Prunus cerasifera</i>	cherry plum	Yes	6.8	5.1	0.0	0.0	0.0	11.9	37.4	non-ordinance-size tree		6	20	Fair	Fair	Fair
239	<i>Washingtonia robusta</i>	Mexican fan palm	No	15.9	0.0	0.0	0.0	0.0	15.9	49.9	ordinance-size tree		7	50	Fair	Fair	Fair
240	<i>Ligustrum lucidum</i>	glossy privet	Yes	4.4	9.0	2.1	2.3	2.0	19.8	62.2	ordinance-size tree		12	30	Fair	Fair	Poor
241	<i>Ligustrum lucidum</i>	glossy privet	Yes	10.0	8.1	0.0	0.0	0.0	18.1	56.8	ordinance-size tree		15	35	Fair	Fair	Fair
242	<i>Populus nigra</i>	Lombardy poplar	No	7.8	0.0	0.0	0.0	0.0	7.8	24.5	non-ordinance-size tree		5	35	Fair	Fair	Fair
243	<i>Olea europaea</i>	olive tree	Yes	11.6	10.3	9.0	0.0	0.0	30.9	97.0	ordinance-size tree		18	30	Fair	Fair	Fair
244	<i>Morus alba</i>	white mulberry	No	8.4	0.0	0.0	0.0	0.0	8.4	26.4	non-ordinance-size tree		12	30	Fair	Fair	Fair
245	<i>Myrtus communis</i>	common myrtle	Yes	4.4	2.1	0.0	0.0	0.0	6.5	20.4	non-ordinance-size tree		5	10	Fair	Fair	Fair
246	<i>Myrtus communis</i>	common myrtle	No	4.5	0.0	0.0	0.0	0.0	4.5	14.1	non-ordinance-size tree		5	10	Fair	Fair	Fair
247	<i>Myrtus communis</i>	common myrtle	Yes	4.5	2.1	2.2	0.0	0.0	8.8	27.6	non-ordinance-size tree		5	10	Fair	Fair	Fair
248	<i>Myrtus communis</i>	common myrtle	Yes	3.2	2.1	2.2	0.0	0.0	7.5	23.6	non-ordinance-size tree		5	10	Fair	Fair	Fair
249	<i>Myrtus communis</i>	common myrtle	No	4.3	0.0	0.0	0.0	0.0	4.3	13.5	non-ordinance-size tree		5	10	Fair	Fair	Fair
250	<i>Myrtus communis</i>	common myrtle	Yes	7.1	3.2	0.0	0.0	0.0	10.3	32.3	non-ordinance-size tree		5	10	Fair	Fair	Fair
251	<i>Myrtus communis</i>	common myrtle	Yes	3.1	3.0	3.0	2.8	0.0	11.9	37.4	non-ordinance-size tree		5	10	Fair	Fair	Fair
252	<i>Olea europaea</i>	olive tree	Yes	21.5	9.5	9.5	0.0	0.0	40.5	127.2	ordinance-size tree		15	25	Fair	Fair	Fair
253	<i>Olea europaea</i>	olive tree	Yes	9.6	11.1	10.5	0.0	0.0	31.2	98.0	ordinance-size tree	no tag	15	30	Fair	Fair	Fair
254	<i>Olea europaea</i>	olive tree	Yes	8.5	10.6	9.8	9.3	7.5	45.7	143.5	ordinance-size tree		15	30	Fair	Fair	Fair
255	<i>Olea europaea</i>	olive tree	Yes	11.0	15.6	11.4	9.3	7.5	54.8	172.1	ordinance-size tree		18	30	Fair	Fair	Fair
256	<i>Washingtonia robusta</i>	Mexican fan palm	Yes	14.5	15.5	13.0	14.5	0.0	57.5	180.6	ordinance-size tree	no tag	15	45	Fair	Fair	Fair
257	<i>Washingtonia robusta</i>	Mexican fan palm	No	15.8	0.0	0.0	0.0	0.0	15.8	49.6	ordinance-size tree	no tag	6	20	Fair	Fair	Fair
258	<i>Washingtonia robusta</i>	Mexican fan palm	Yes	15.8	12.1	0.0	0.0	0.0	27.9	87.6	ordinance-size tree	no tag	10	40	Fair	Fair	Fair
259	<i>Washingtonia robusta</i>	Mexican fan palm	Yes	14.5	12.1	0.0	0.0	0.0	26.6	83.5	ordinance-size tree	no tag	10	45	Fair	Fair	Fair
260	<i>Washingtonia robusta</i>	Mexican fan palm	Yes	16.0	18.5	0.0	0.0	0.0	34.5	108.3	ordinance-size tree	no tag	10	50	Fair	Fair	Fair
261	<i>Washingtonia robusta</i>	Mexican fan palm	Yes	10.8	14.3	0.0	0.0	0.0	25.1	78.8	ordinance-size tree	no tag	6	40	Fair	Fair	Fair
262	<i>Washingtonia robusta</i>	Mexican fan palm	No	18.9	0.0	0.0	0.0	0.0	18.9	59.3	ordinance-size tree	no tag	6	40	Fair	Fair	Fair
263	<i>Washingtonia robusta</i>	Mexican fan palm	No	9.5	0.0	0.0	0.0	0.0	9.5	29.8	non-ordinance-size tree	no tag	6	25	Fair	Fair	Fair
264	<i>Myrtus communis</i>	common myrtle	Yes	5.5	3.4	0.0	0.0	0.0	8.9	27.9	non-ordinance-size tree	no tag	10	20	Fair	Fair	Fair
265	<i>Myrtus communis</i>	common myrtle	Yes	2.2	3.4	2.2	0.0	0.0	7.8	24.5	non-ordinance-size tree	no tag	10	20	Fair	Fair	Fair

Appendix A. 650 North Kind Road, San Jose, Tree Survey Table, August 2020

Tag ID	Species	Common Name	Multi-stem	DBH_1	DBH_2	DBH_3	DBH_4	DBH_5	Total DBH (inches)	Total Circumference (inches)	Ordinance Status	Comment	Dripline (feet)	Height (feet)	Condition	Health	Structure
266	<i>Myrtus communis</i>	common myrtle	No	5.6	0.0	0.0	0.0	0.0	5.6	17.6	non-ordinance-size tree	no tag	10	20	Fair	Fair	Fair
267	<i>Myrtus communis</i>	common myrtle	No	6.2	0.0	0.0	0.0	0.0	6.2	19.5	non-ordinance-size tree	no tag	10	20	Fair	Fair	Fair
268	<i>Myrtus communis</i>	common myrtle	Yes	6.5	5.2	0.0	0.0	0.0	11.7	36.7	non-ordinance-size tree	no tag	10	20	Fair	Fair	Fair
269	<i>Myrtus communis</i>	common myrtle	Yes	7.8	5.5	0.0	0.0	0.0	13.3	41.8	ordinance-size tree	no tag	10	20	Fair	Fair	Fair
270	<i>Populus nigra</i>	Lombardy poplar	No	6.5	0.0	0.0	0.0	0.0	6.5	20.4	non-ordinance-size tree	no tag	8	35	Poor	Poor	Poor
271	<i>Populus nigra</i>	Lombardy poplar	No	4.8	0.0	0.0	0.0	0.0	4.8	15.1	non-ordinance-size tree	no tag	4	35	Poor	Poor	Poor
272	<i>Washingtonia robusta</i>	Mexican fan palm	No	16.5	0.0	0.0	0.0	0.0	16.5	51.8	ordinance-size tree	no tag	6	40	Fair	Fair	Fair

APPENDIX B
TREE SURVEY MAP

This page intentionally left blank.

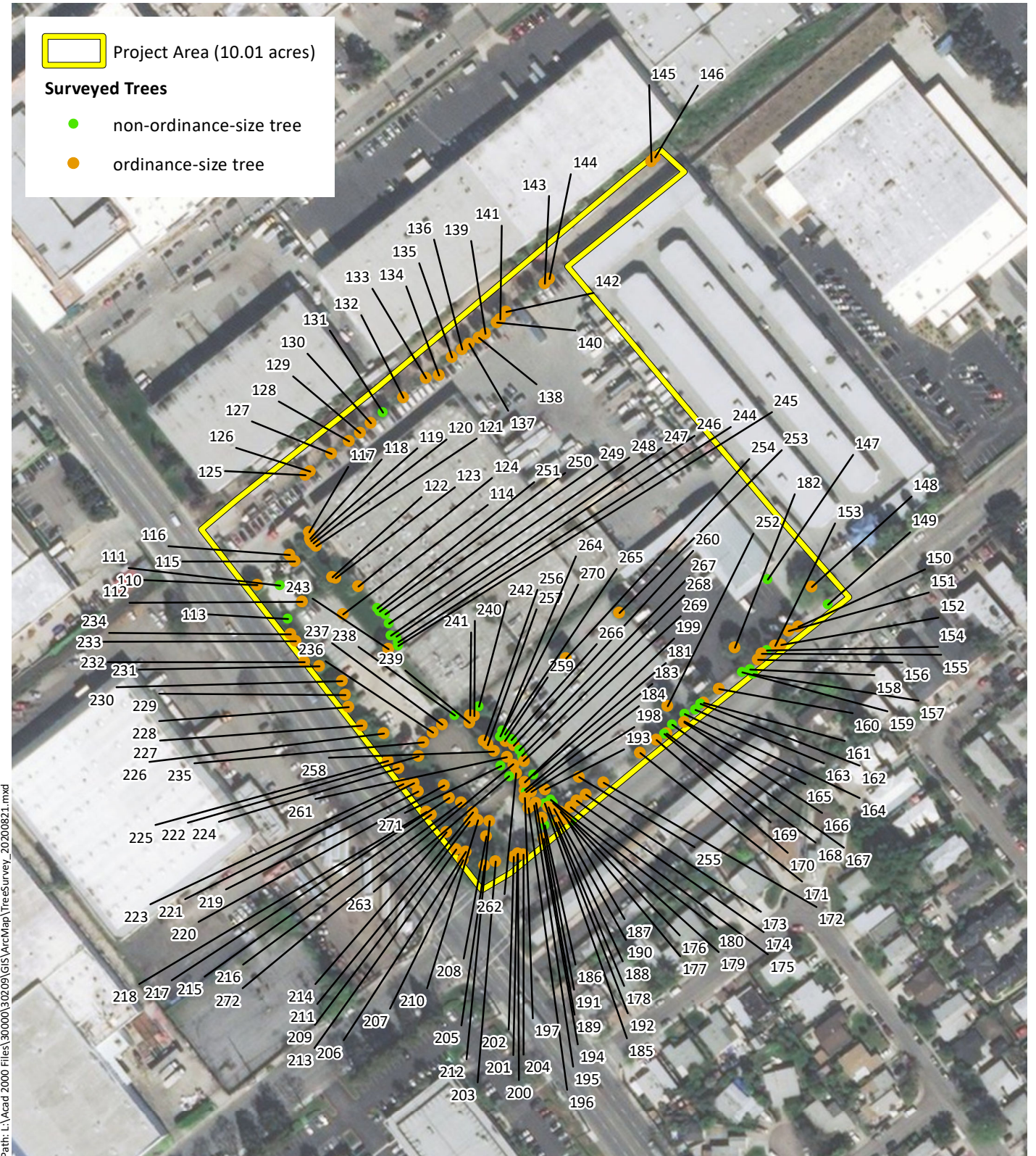
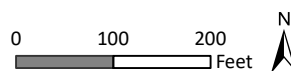


Figure 1. Tree Survey Map

650 North King Road
 Tree Survey and Arborist Report
 San Jose, Santa Clara County, California



APPENDIX C
REPRESENTATIVE PHOTOGRAPHS

This page intentionally left blank.



Photograph 1. Tree #110, a 57.8" circumference camphor (*Cinnamomum camphora*) ordinance-size tree in the northwest portion of the Project Area.



Photograph 2. Tree #114, a 48.7" circumference Canary Island pine (*Pinus canariensis*) ordinance-size tree in the northern portion of the Project Area.



Photograph 3. Tree #'s 117, 118, 119, 120, and 121 in the northern portion of the Project Area. All trees are considered ordinance-size trees.



Photograph 4. Tree #145, a 110.5" circumference plume acacia (*Albizia lophantha*) ordinance-size tree in the northeast corner of the Project Area.



Photograph 5. Tree #189, a 59.3" circumference Mexican fan palm (*Washingtonia robusta*) ordinance-size tree along Las Plumas Avenue.



Photograph 6. Tree #205, a 111.8" circumference evergreen ash (*Fraxinus uhdei*) ordinance-size tree in the southern corner of the Project Area.



Photograph 7. Tree #255, a 172.1" circumference olive (*Olea europaea*) ordinance-size tree in the southern portion of the Project Area.