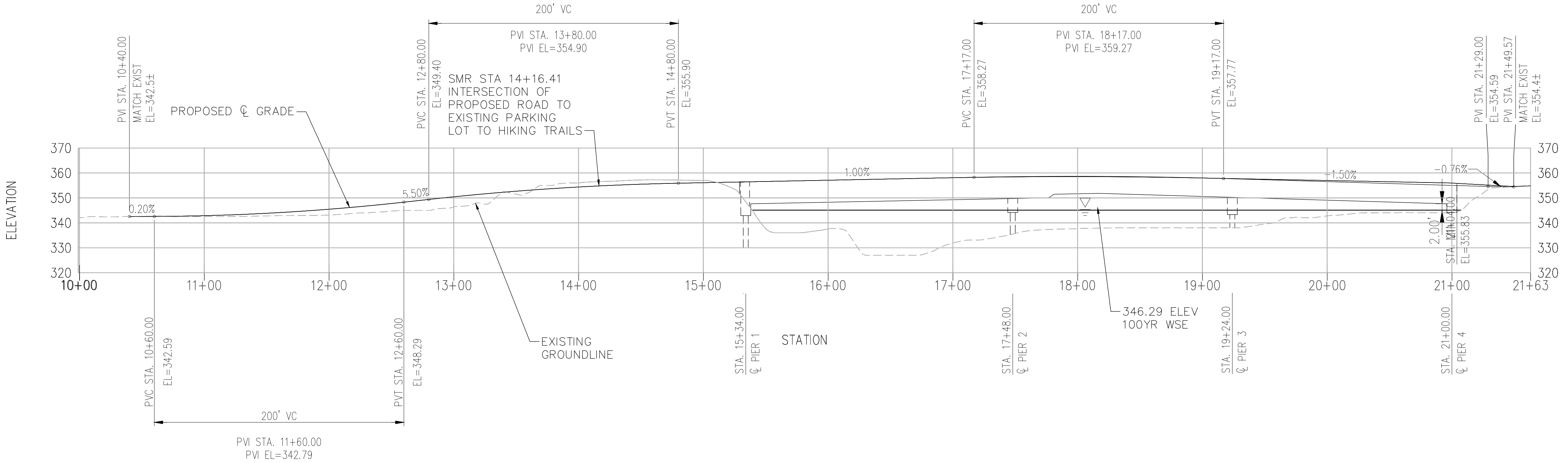


LEGEND:

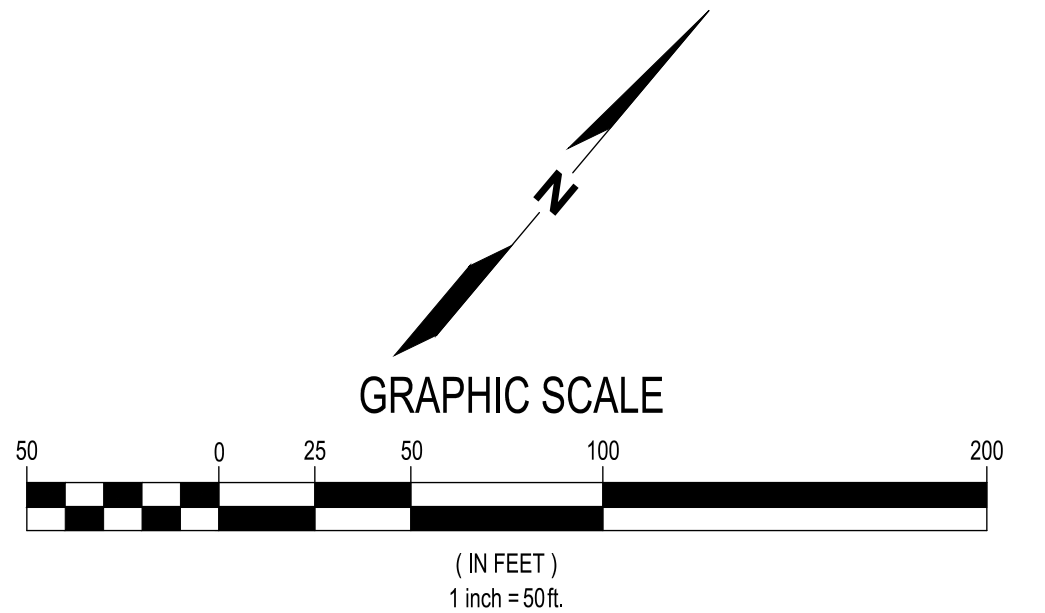
FILLED SCOUR HOLE (IN CHANNEL)

CURVE DATA							
ALIGNMENT	PI STATION	DELTA	RADIUS	TANGENT	LENGTH	NORTHING	EASTING
SANDIA CREEK DRIVE	11+72.83	12°50'02"	500'	56.23'	112.00'	2095471.81	6258572.83
ACCESS ROAD	5+51.67	41°47'43"	60'	22.91'	43.77'	2095590.65	6258792.16

PLAN
1"=50'

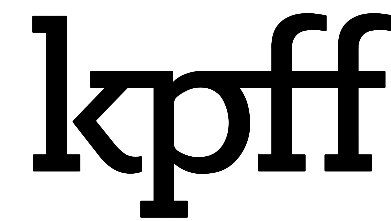


PROFILE
HOR: 1"=50'
VER: 1"=10'



Full Size = 22" x 34", Half Size = 11" x 17"

Plotted: Dec 16, 2021 - 1:31am lthoo Layout: C9
M:\2017\1700232 Santa Margarita River Fish Passage\Drawings\Current\xxxxxx-C9-Roadway Plan.dwg



1601 5th Avenue, Suite 1300
Seattle, Washington 98101
(206) 382-0600 Fax (206) 382-0500

NO.	DATE	BY	REVISION

SANDIA CREEK ROAD BRIDGE REPLACEMENT

APPROACH ROADWAY PLAN AND PROFILE

DRAWN: DYU	PROJECT NO.: 2000118
DESIGN: RO	SCALE: AS SHOWN
CHECKED: TG	DATE: 2021-10-08
DRAWING NO.	C9
SHEET NO.	09 OF 54

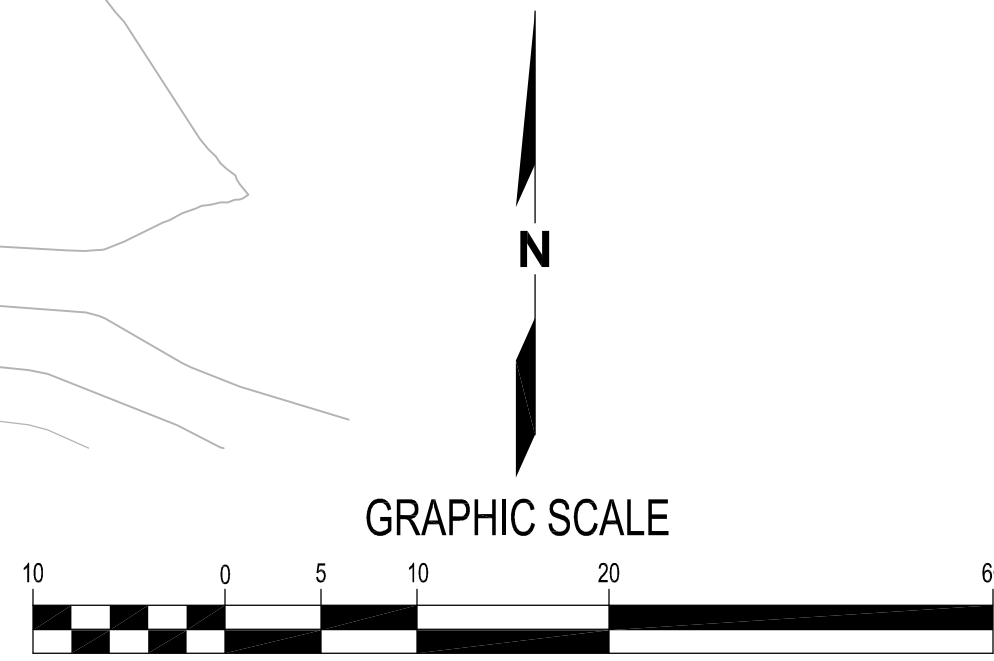
FIRST IMPROVEMENT PLAN SUBMITTAL - NOT FOR CONSTRUCTION

Plotted: Dec 16, 2021 - 2:37am
 M:\2017\1700232_Santa Margarita River Fish Passage\Drawings\Current\xxxxxx-C10_C11-Wingwall.dwg

Layout: C10
 amunez

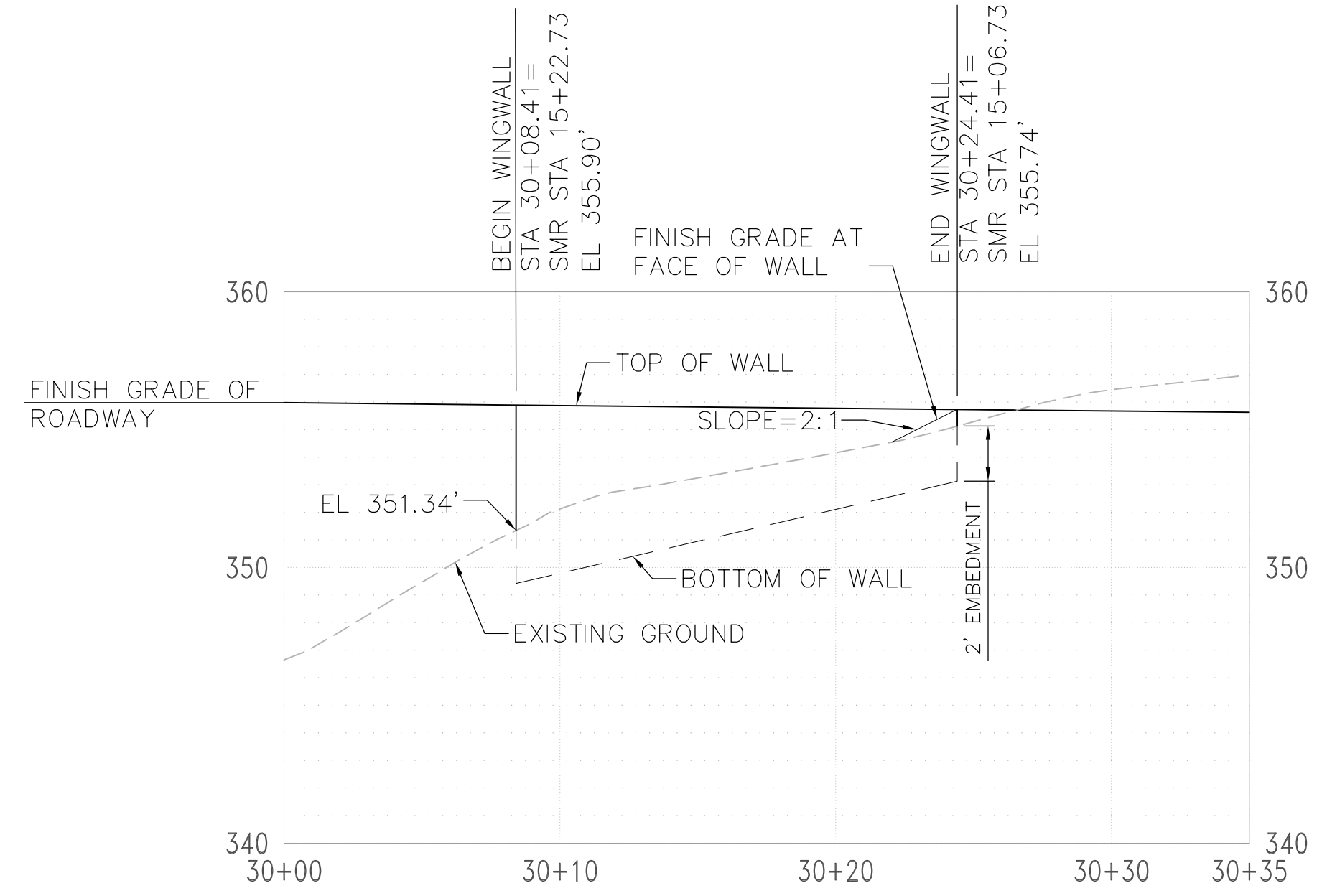


PLAN



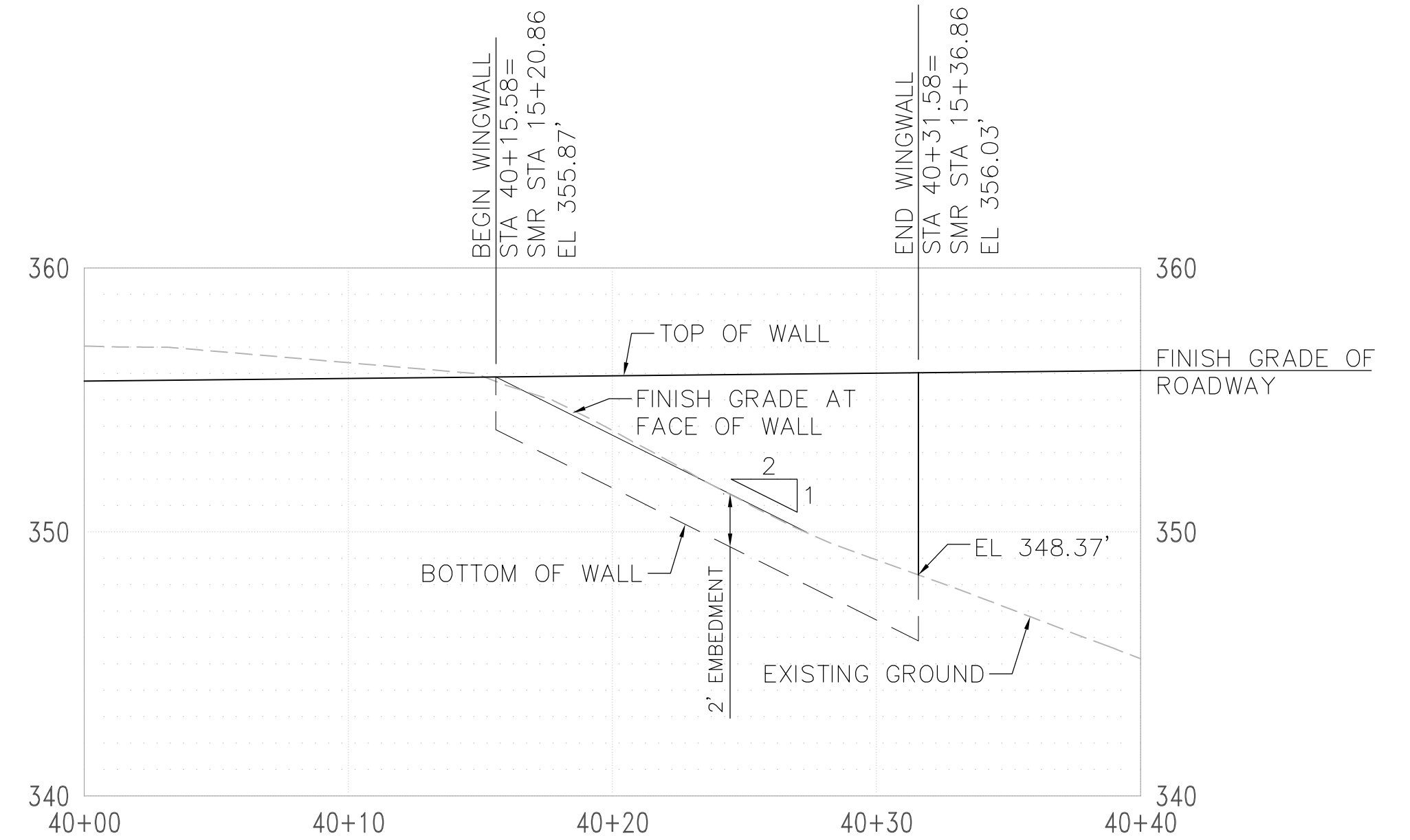
(IN FEET)
 1 inch = 10ft.
 Full Size = 22" x 34", Half Size = 11" x 17"

LEGEND: WINGWALL



SOUTHERN WINGWALL 1 - SWW1

SCALE: 1 inch = 5 ft.



SOUTHERN WINGWALL 2 - SWW2

SCALE: 1 inch = 5 ft.

kpff

1601 5th Avenue, Suite 1300
 Seattle, Washington 98101
 (206) 382-0600 Fax (206) 382-0500

NO.	DATE	BY	REVISION

SANDIA CREEK ROAD BRIDGE REPLACEMENT

**WINGWALL PLAN
 SWW1 AND SWW2**

DRAWN: XXX	PROJECT NO.: 2000118
DESIGN: XXX	SCALE: AS SHOWN
CHECKED: XXX	DATE: 2021-10-08
DRAWING NO.	C10
SHEET NO.	10 OF 54

FIRST IMPROVEMENT PLAN SUBMITTAL - NOT FOR CONSTRUCTION