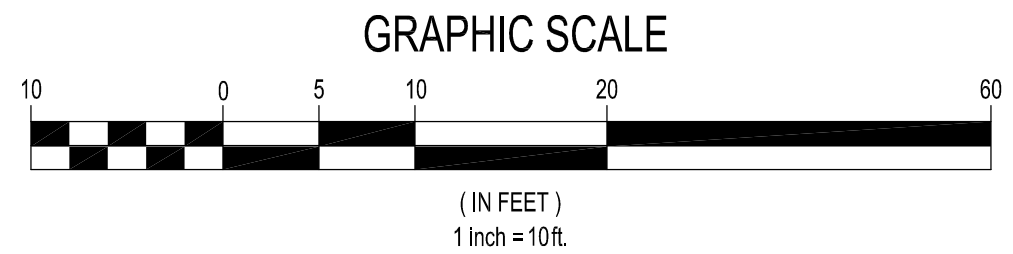


Plotted: Dec 16, 2021 - 2:35am  
 M:\2017\1700232\_Santa Margarita River Fish Passage\Drawings\Current\xxxxxx-C10\_C11-Wingwall.dwg  
 Layout: C11  
 amunez

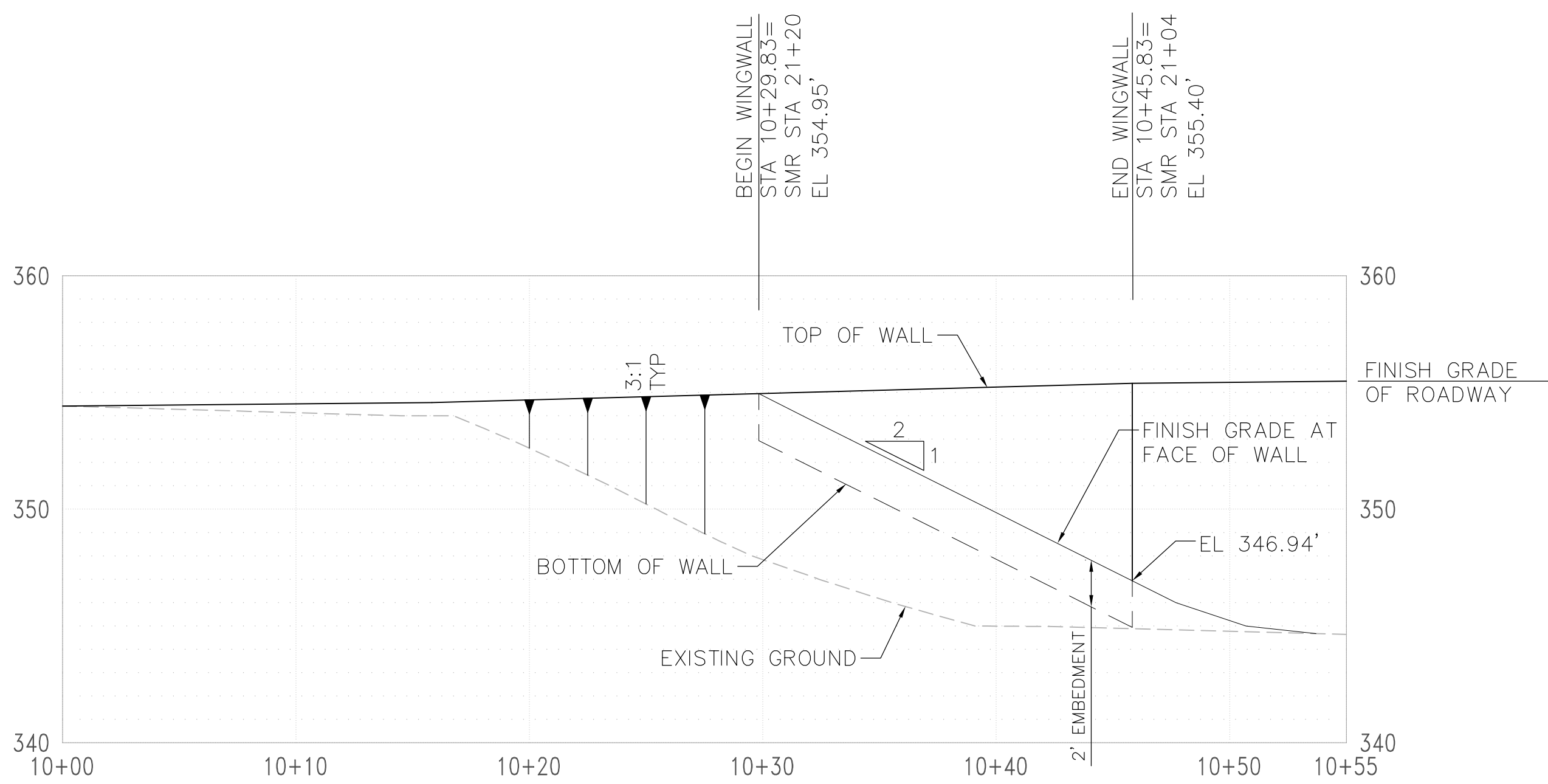


PLAN



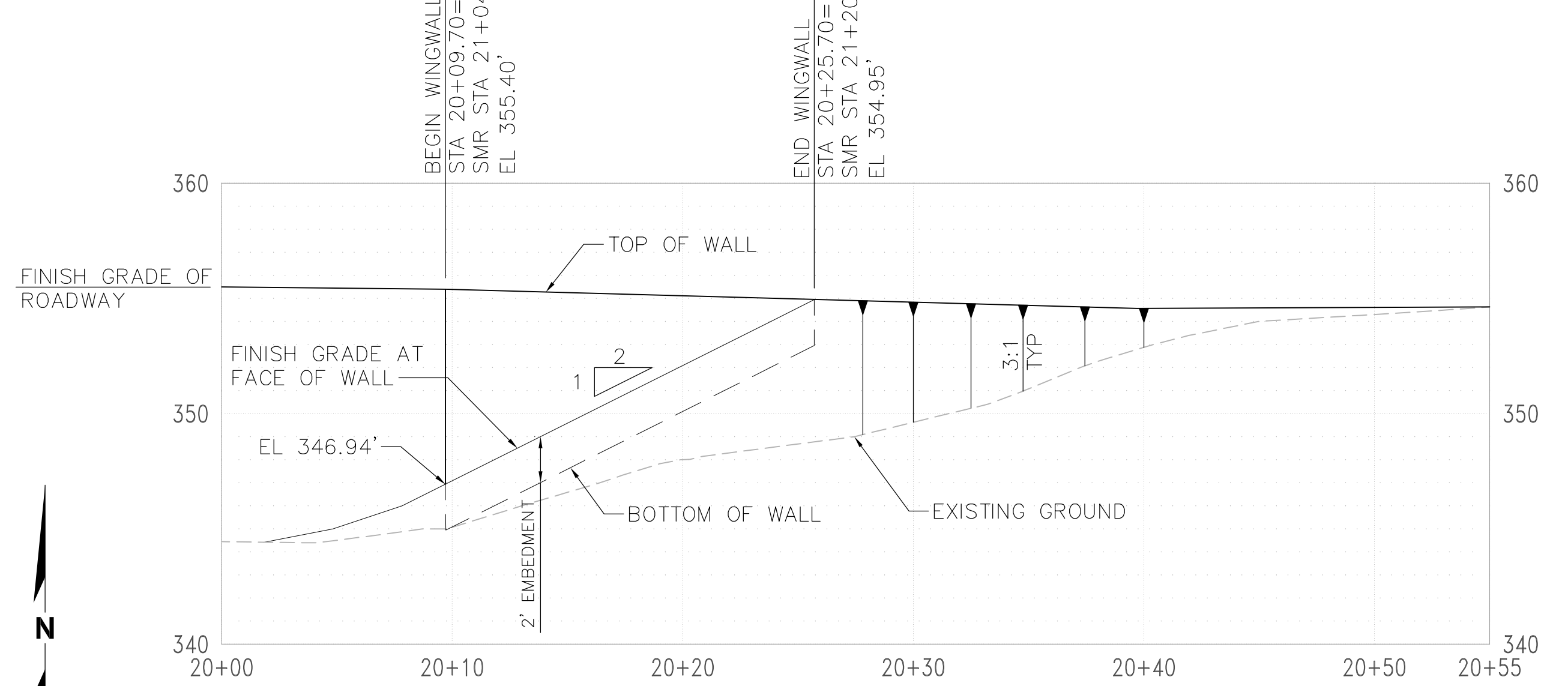
Full Size = 22" x 34", Half Size = 11" x 17"

**LEGEND:** WINGWALL



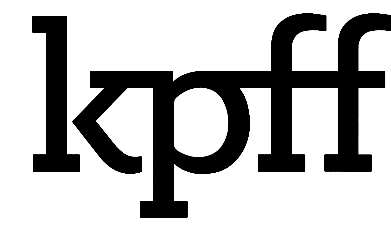
**NORTHERN WINGWALL 1 - NWW1**

SCALE: 1 inch = 5 ft.



**NORTHERN WINGWALL 2 - NWW2**

SCALE: 1 inch = 5 ft.



1601 5th Avenue, Suite 1300  
 Seattle, Washington 98101  
 (206) 382-0600 Fax (206) 382-0500

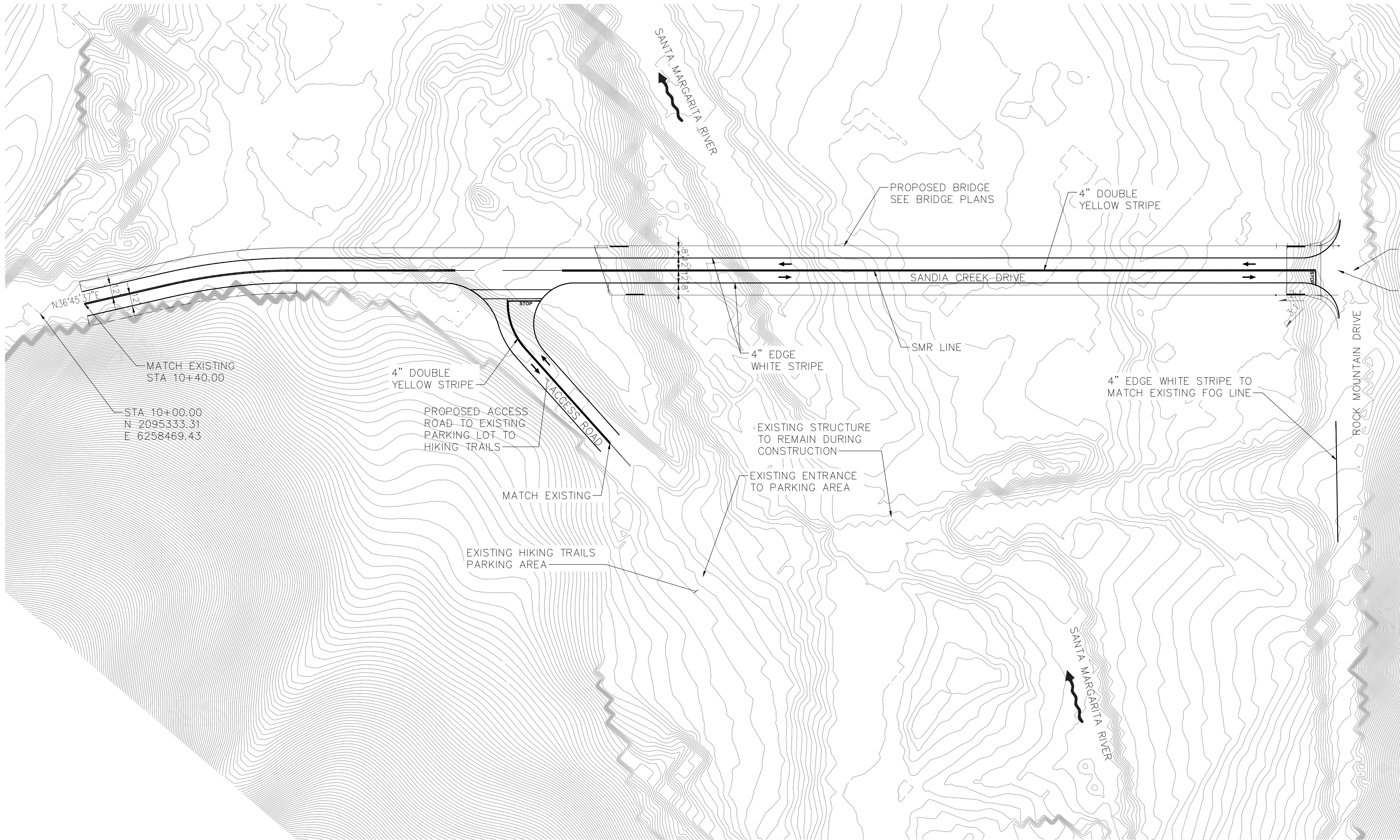
NO.	DATE	BY	REVISION

**SANDIA CREEK ROAD BRIDGE REPLACEMENT**

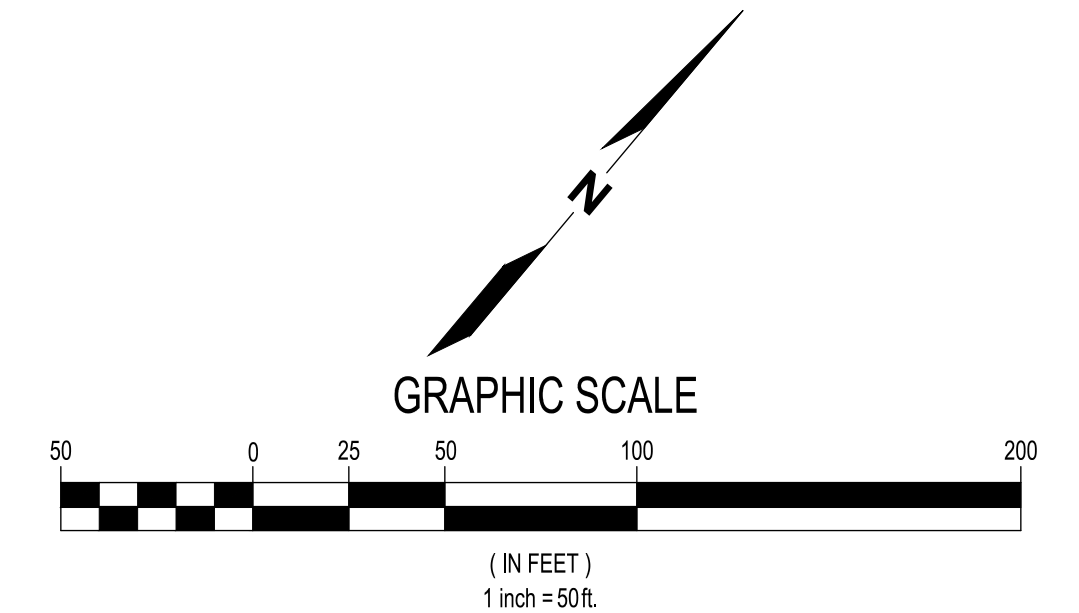
**WINGWALL PLAN  
 NWW1 AND NWW2**

DRAWN: XXX	PROJECT NO.: 2000118
DESIGN: XXX	SCALE: AS SHOWN
CHECKED: XXX	DATE: 2021-10-08
DRAWING NO.	<b>C11</b>
SHEET NO.	<b>11 OF 54</b>

**FIRST IMPROVEMENT PLAN SUBMITTAL - NOT FOR CONSTRUCTION**

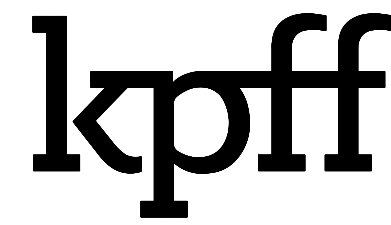


PLAN  
1" = 50'



Full Size = 22" x 34", Half Size = 11" x 17"

Plotted: Dec 16, 2021 - 1:42pm lthao Layout: C12  
M:\2017\1700232 Santa Margarita River Fish Passage\Drawings\Current\xxxxxx-C12-Striping Plan.dwg



1601 5th Avenue, Suite 1300  
Seattle, Washington 98101  
(206) 382-0600 Fax (206) 382-0500

NO.	DATE	BY	REVISION

**SANDIA CREEK ROAD BRIDGE REPLACEMENT**

**STRIPING PLAN**

DRAWN: DYU	PROJECT NO.: 2000118
DESIGN: RO	SCALE: AS SHOWN
CHECKED: TG	DATE: 2021-10-08
DRAWING NO.	<b>C12</b>
SHEET NO.	<b>12</b> OF <b>54</b>

FIRST IMPROVEMENT PLAN SUBMITTAL - NOT FOR CONSTRUCTION