

**APPENDIX C:
NOISE DATA**



TRAFFIC NOISE MODELING

ID	Output						Inputs													Auto Inputs		
	dBA at 50 feet			Distance to CNEL Contour			Roadway	Segment	ADT	Posted Speed Limit	Grade	% Autos	% Med Trucks	% Heavy Trucks	% Daytime	% Evening	% Night	Number of Lanes	Site Condition	Distance to Receiver	Ground Absorption	Lane Distance
	L _{eq-24hr}	L _{dn}	CNEL	70 dBA	65 dBA	60 dBA																
1	73.3	76.1	76.8	142	306	659	SR 152	Badger Flat Road to Ortigalita Rd	41,010	45	0.0%	91.0%	3.5%	5.6%	75.0%	15.0%	10.0%	4	Soft	50	0.5	44
2	73.6	76.4	77.1	149	321	692	SR 152	Ortigalita Road to 7th Street	44,090	45	0.0%	91.0%	3.5%	5.6%	75.0%	15.0%	10.0%	4	Soft	50	0.5	44
3	73.9	76.7	77.4	156	335	723	SR 152	7th Street to SR 165	47,060	45	0.0%	91.0%	3.5%	5.6%	75.0%	15.0%	10.0%	4	Soft	50	0.5	44
4	73.7	76.5	77.2	151	326	702	SR 152	SR 165 to Ward Road	45,030	45	0.0%	91.0%	3.5%	5.6%	75.0%	15.0%	10.0%	4	Soft	50	0.5	44
5	72.0	74.8	75.4	115	248	535	SR 152	Ward Road to East City Limit	29,930	45	0.0%	91.0%	3.5%	5.6%	75.0%	15.0%	10.0%	4	Soft	50	0.5	44
6	69.1	71.9	72.6	74	160	346	SR 165	Northern City Limit to Overland Av	20,090	35	0.0%	90.9%	1.0%	8.1%	75.0%	15.0%	10.0%	4	Soft	50	0.5	44
7	68.1	70.9	71.6	64	138	297	SR 165	Overland Avenue to B Street	16,010	35	0.0%	90.9%	1.0%	8.1%	75.0%	15.0%	10.0%	4	Soft	50	0.5	44
8	69.1	71.8	72.5	74	159	342	SR 165	B Street to SR 152	19,770	35	0.0%	90.9%	1.0%	8.1%	75.0%	15.0%	10.0%	4	Soft	50	0.5	44
9	66.2	69.0	69.7	48	103	221	SR 165	SR 152 to Pioneer Road	10,300	35	0.0%	90.9%	1.0%	8.1%	75.0%	15.0%	10.0%	4	Soft	50	0.5	44
10	61.9	64.7	65.4	25	53	114	Overland Avenue	SR 165 to Place Road (Used ST1)	9,920	35	0.0%	95.3%	4.7%	0.0%	75.0%	15.0%	10.0%	2	Soft	50	0.5	20
11	61.8	64.6	65.3	24	52	113	Ward Road	B Street to SR 152 (ST3)	9,620	35	0.0%	98.1%	1.0%	1.0%	75.0%	15.0%	10.0%	4	Soft	50	0.5	44
12	65.5	68.3	69.0	43	92	198	Ward Road	South of SR 152 (ST 7)	3,600	35	0.0%	75.0%	0.0%	25.0%	75.0%	15.0%	10.0%	4	Soft	50	0.5	44
13	61.3	64.1	64.7	22	48	104	B Street	SR 165 to Place Road (ST1)	8,590	35	0.0%	95.3%	4.7%	0.0%	75.0%	15.0%	10.0%	2	Soft	50	0.5	20
14	62.6	65.4	66.0	27	59	126	B Street	Place Road to Ward Road (used ST1)	8,300	40	0.0%	95.3%	4.7%	0.0%	75.0%	15.0%	10.0%	2	Soft	50	0.5	20
15	64.8	67.6	68.3	38	83	178	Pioneer Road	West of SR 165 (use Mercy - ST 6)	8,110	45	0.0%	96.9%	0.0%	3.1%	75.0%	15.0%	10.0%	4	Soft	50	0.5	44

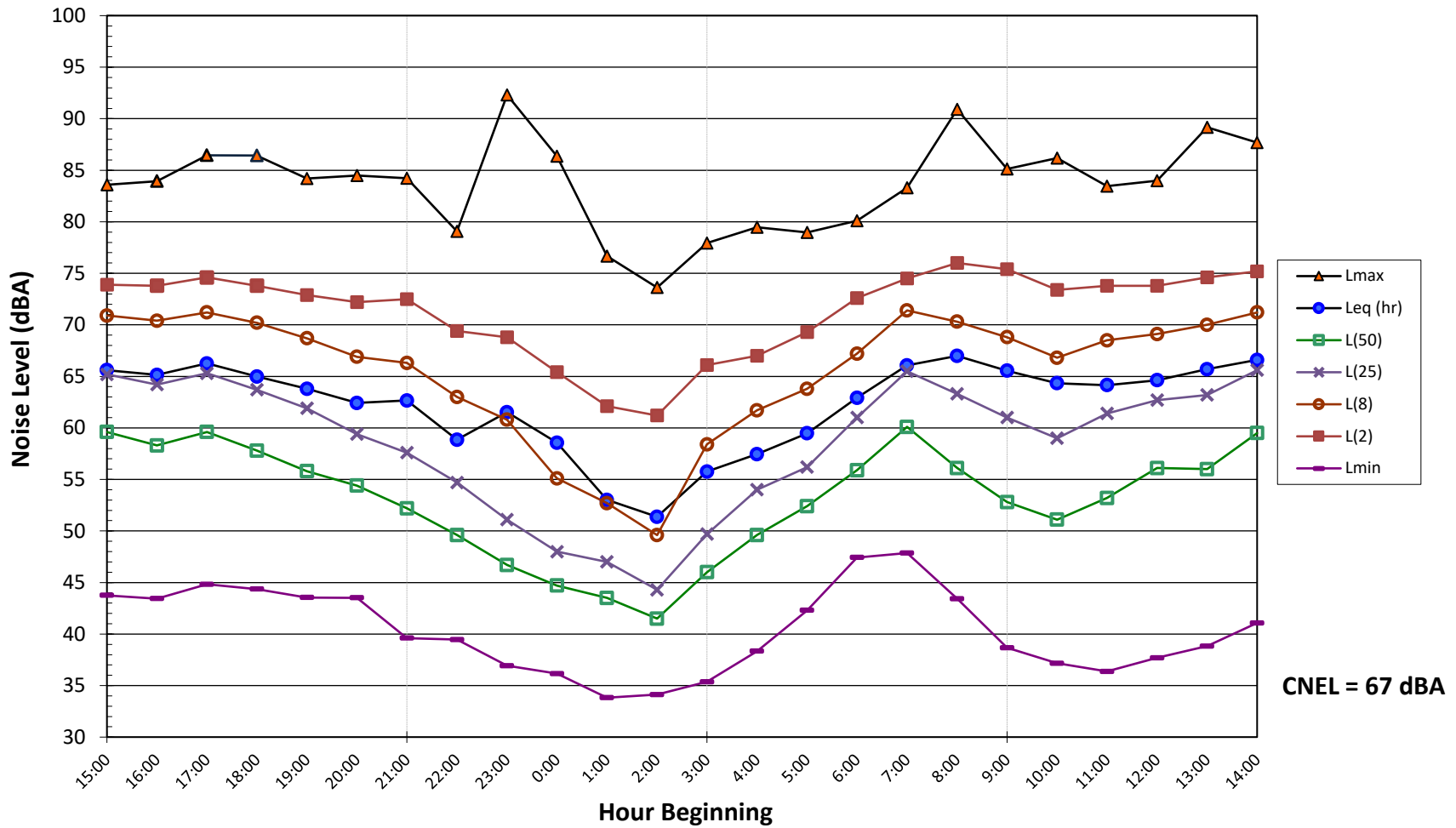
Traffic Noise Calculator: FHWA 77-108

Project Title: Los Banos GP EIR Existing

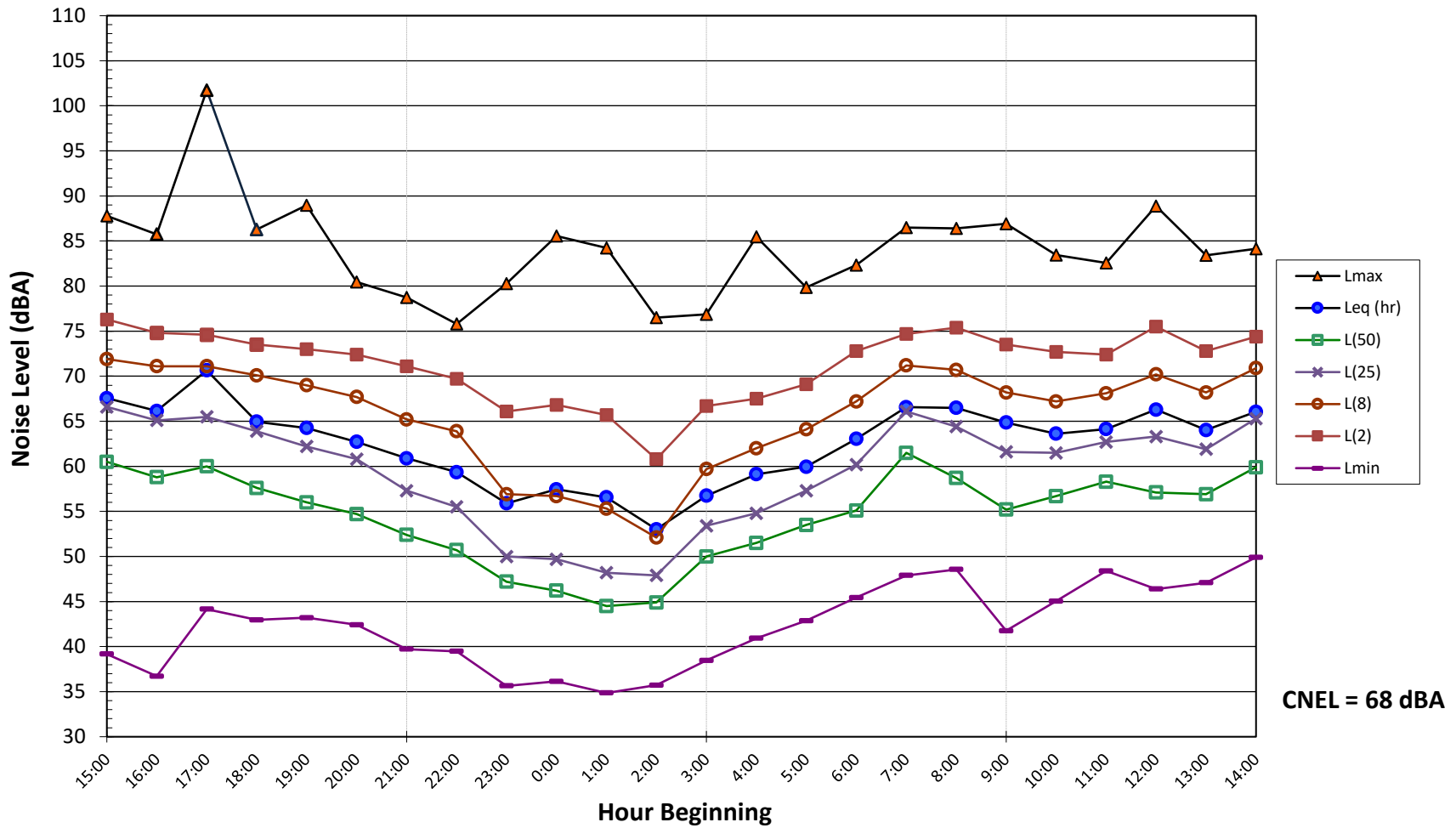
ID	Output						Inputs													Auto Inputs		
	dBA at 50 feet			Distance to CNEL Contour			Roadway	Segment	ADT	Posted Speed Limit	Grade	% Autos	% Med Trucks	% Heavy Trucks	% Daytime	% Evening	% Night	Number of Lanes	Site Condition	Distance to Receiver	Ground Absorption	Lane Distance
	L _{eq-24hr}	L _{dn}	CNEL	70 dBA	65 dBA	60 dBA																
1	70.8	73.6	74.2	96	206	445	SR 152	Badger Flat Road to Ortigalita Rd	22,710	45	0.0%	91.0%	3.5%	5.6%	75.0%	15.0%	10.0%	4	Soft	50	0.5	44
2	72.3	75.1	75.7	121	260	560	SR 152	Ortigalita Road to 7th Street	32,130	45	0.0%	91.0%	3.5%	5.6%	75.0%	15.0%	10.0%	4	Soft	50	0.5	44
3	72.5	75.3	76.0	126	271	584	SR 152	7th Street to SR 165	34,170	45	0.0%	91.0%	3.5%	5.6%	75.0%	15.0%	10.0%	4	Soft	50	0.5	44
4	72.5	75.3	76.0	126	271	584	SR 152	SR 165 to Ward Road	34,170	45	0.0%	91.0%	3.5%	5.6%	75.0%	15.0%	10.0%	4	Soft	50	0.5	44
5	70.5	73.3	74.0	92	198	426	SR 152	Ward Road to East City Limit	21,290	45	0.0%	91.0%	3.5%	5.6%	75.0%	15.0%	10.0%	4	Soft	50	0.5	44
6	67.8	70.6	71.3	61	132	284	SR 165	Northern City Limit to Overland Av	14,990	35	0.0%	90.9%	1.0%	8.1%	75.0%	15.0%	10.0%	4	Soft	50	0.5	44
7	67.5	70.3	71.0	58	125	269	SR 165	Overland Avenue to B Street	13,770	35	0.0%	90.9%	1.0%	8.1%	75.0%	15.0%	10.0%	4	Soft	50	0.5	44
8	68.2	71.0	71.7	65	140	301	SR 165	B Street to SR 152	16,320	35	0.0%	90.9%	1.0%	8.1%	75.0%	15.0%	10.0%	4	Soft	50	0.5	44
9	65.7	68.5	69.2	44	95	206	SR 165	SR 152 to Pioneer Road	9,220	35	0.0%	90.9%	1.0%	8.1%	75.0%	15.0%	10.0%	4	Soft	50	0.5	44
10	61.1	63.8	64.5	22	47	100	Overland Avenue	SR 165 to Place Road (Used ST1)	8,170	35	0.0%	95.3%	4.7%	0.0%	75.0%	15.0%	10.0%	2	Soft	50	0.5	20
11	61.3	64.1	64.8	22	48	104	Ward Road	B Street to SR 152 (ST3)	8,550	35	0.0%	98.1%	1.0%	1.0%	75.0%	15.0%	10.0%	4	Soft	50	0.5	44
12	64.5	67.3	68.0	37	79	170	Ward Road	South of SR 152 (ST 7)	2,850	35	0.0%	75.0%	0.0%	25.0%	75.0%	15.0%	10.0%	4	Soft	50	0.5	44
13	61.2	64.0	64.7	22	48	103	B Street	SR 165 to Place Road (ST1)	8,520	35	0.0%	95.3%	4.7%	0.0%	75.0%	15.0%	10.0%	2	Soft	50	0.5	20
14	62.6	65.3	66.0	27	59	126	B Street	Place Road to Ward Road (used ST1)	8,270	40	0.0%	95.3%	4.7%	0.0%	75.0%	15.0%	10.0%	2	Soft	50	0.5	20
15	64.2	67.0	67.7	35	75	162	Pioneer Road	West of SR 165 (use Mercy - ST 6)	7,060	45	0.0%	96.9%	0.0%	3.1%	75.0%	15.0%	10.0%	4	Soft	50	0.5	44

NOISE MONITORING GRAPHS

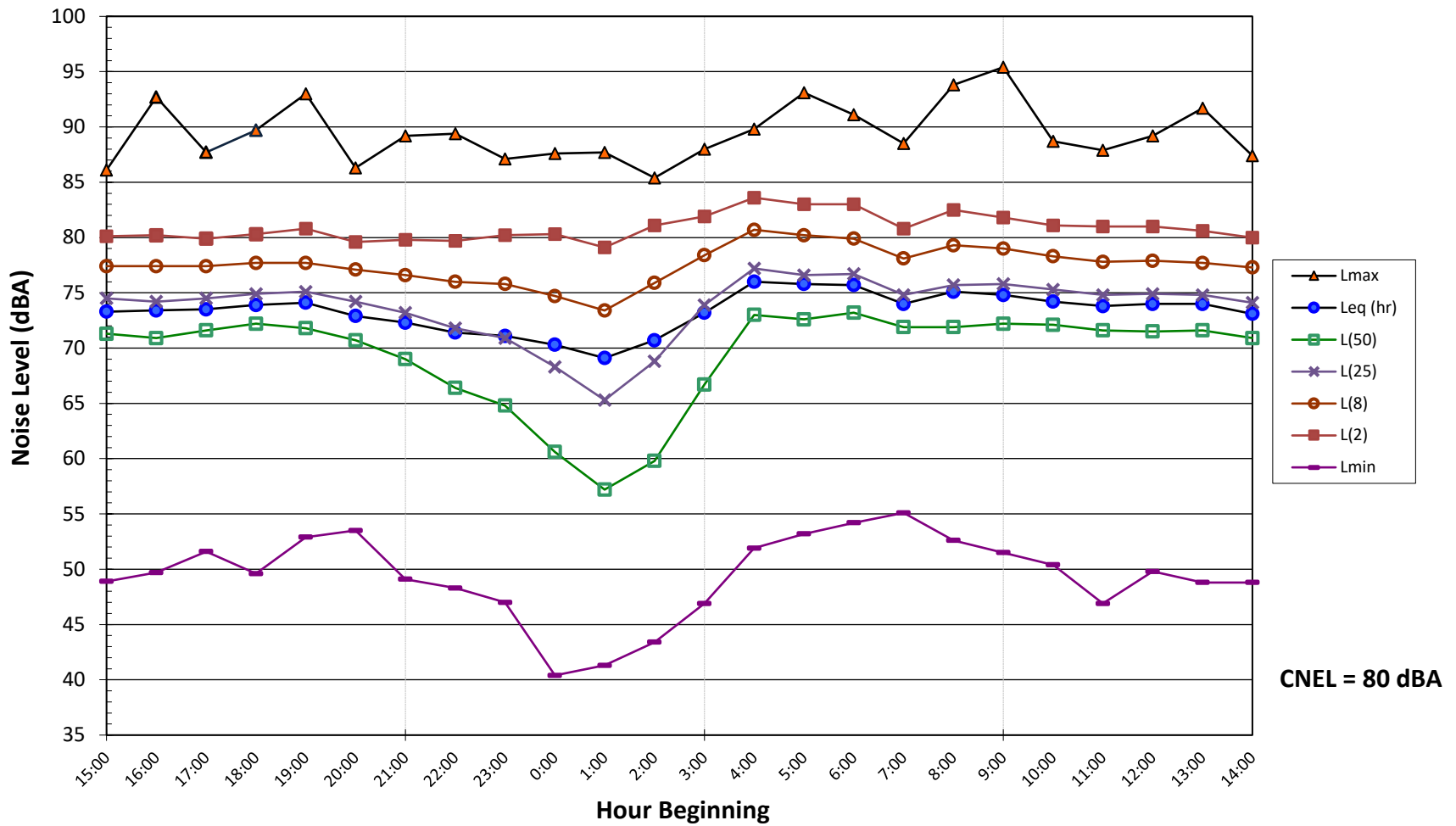
Noise Levels at LT-1
Overland Avenue west of Somerset Avenue, Los Banos, CA
Wednesday, January 19 - Thursday, January 20, 2022



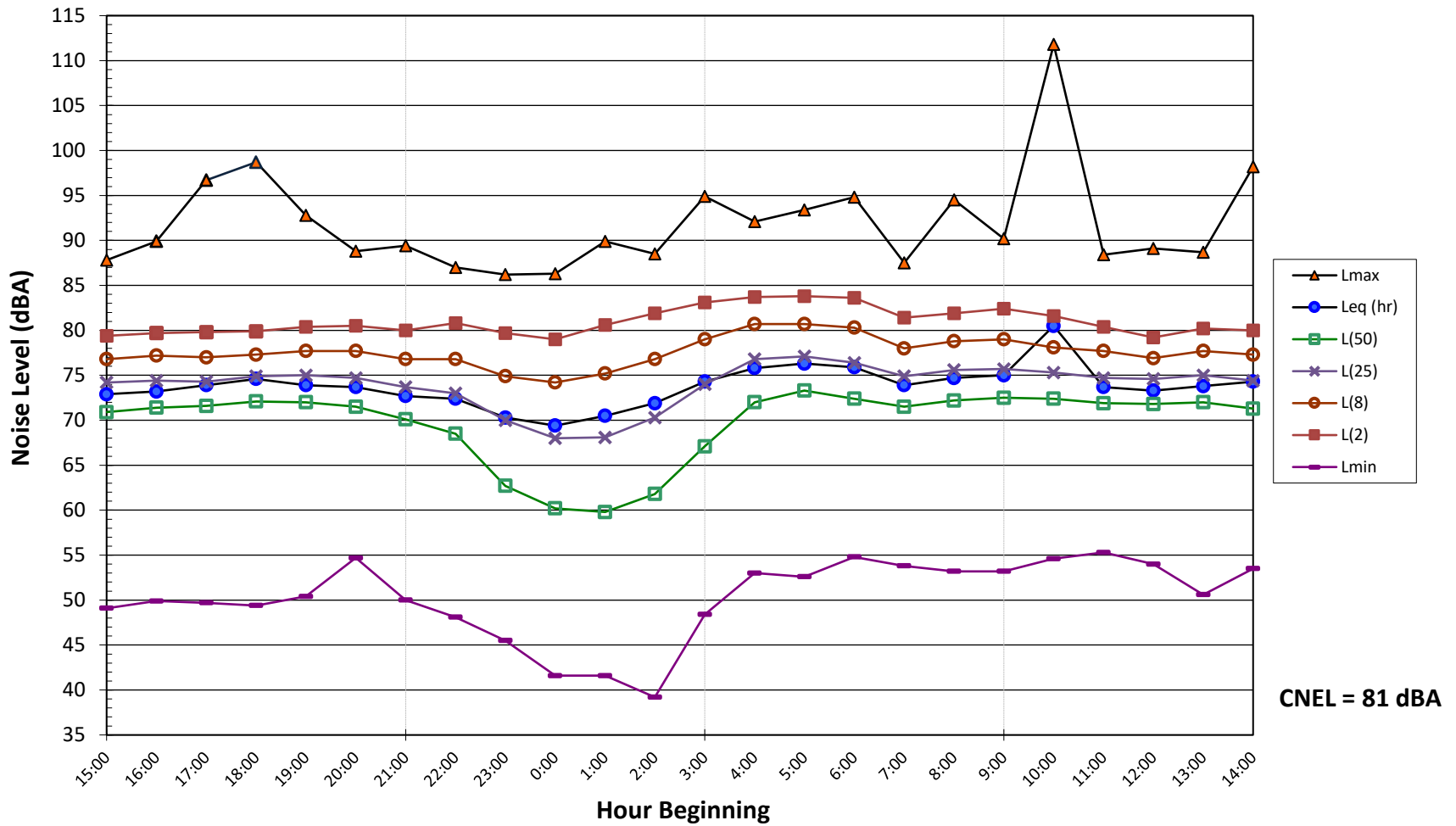
Noise Levels at LT-1
Overland Avenue west of Somerset Avenue, Los Banos, CA
Thursday, January 20 - Friday, January 21, 2022



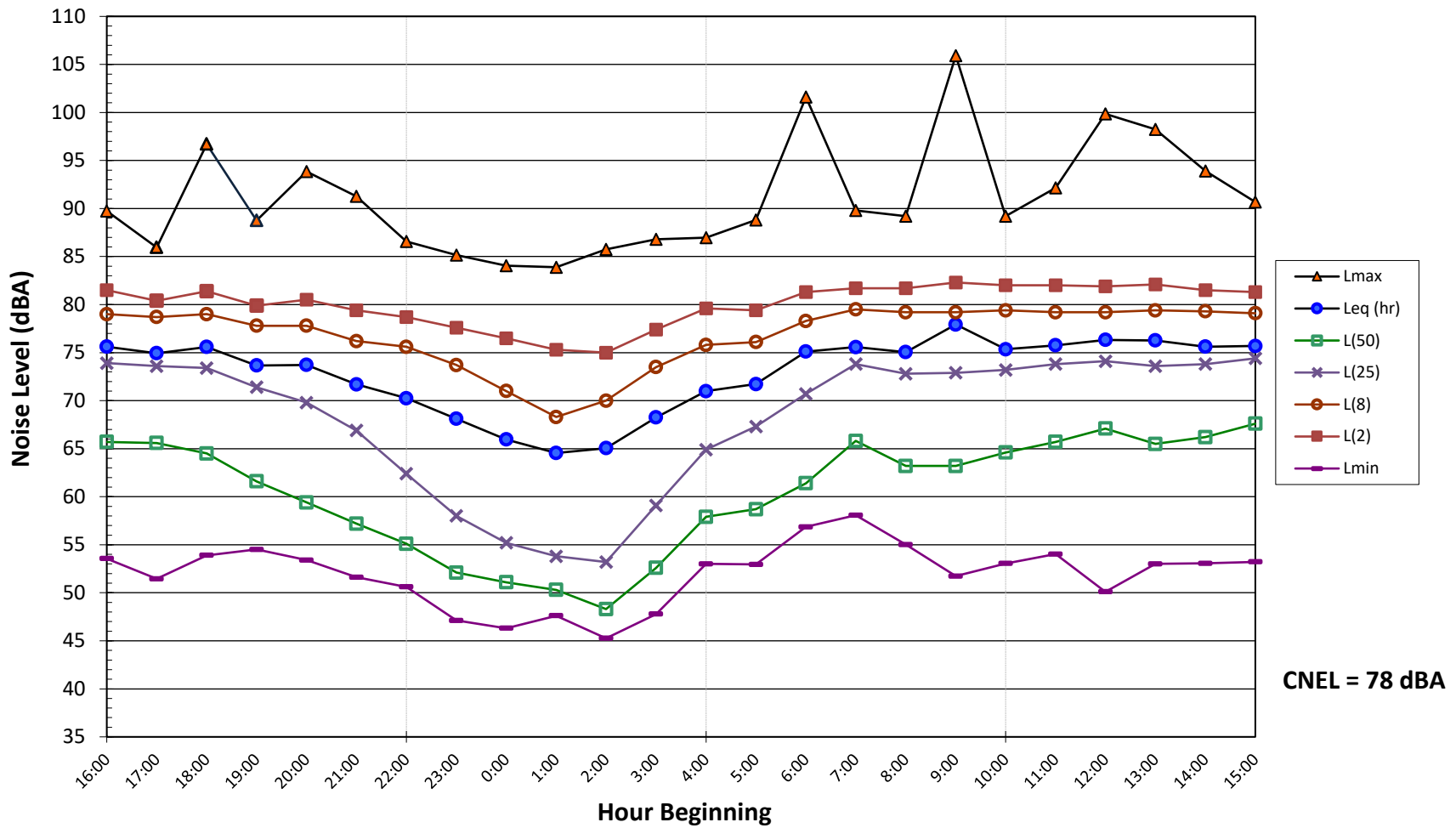
Noise Levels at LT-2
Pacheco Boulevard west of 7th Street, Los Banos, CA
Wednesday, January 19 - Thursday, January 20, 2022



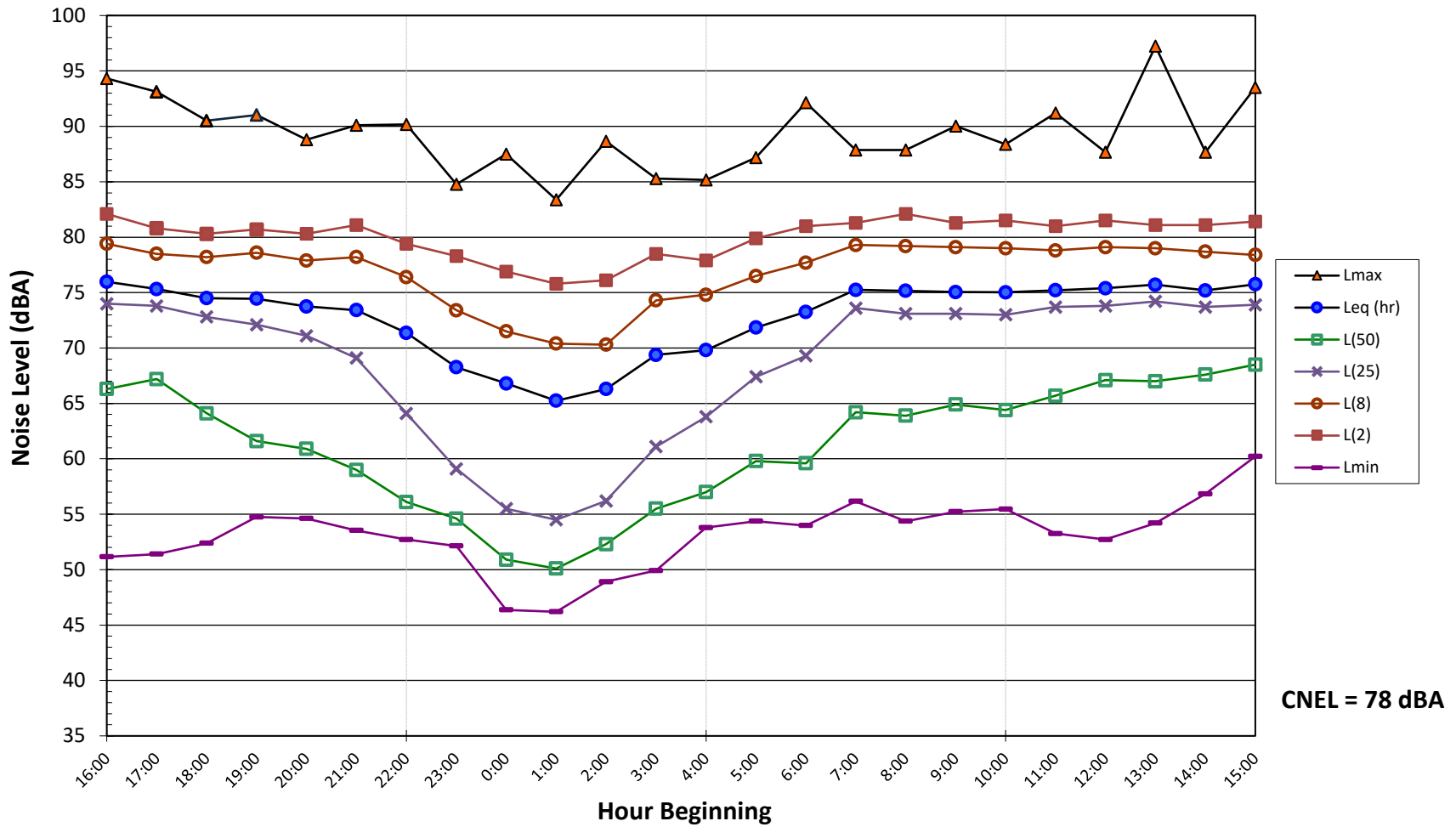
Noise Levels at LT-2
Pacheco Boulevard west of 7th Street, Los Banos, CA
Thursday, January 20 - Friday, January 21, 2022



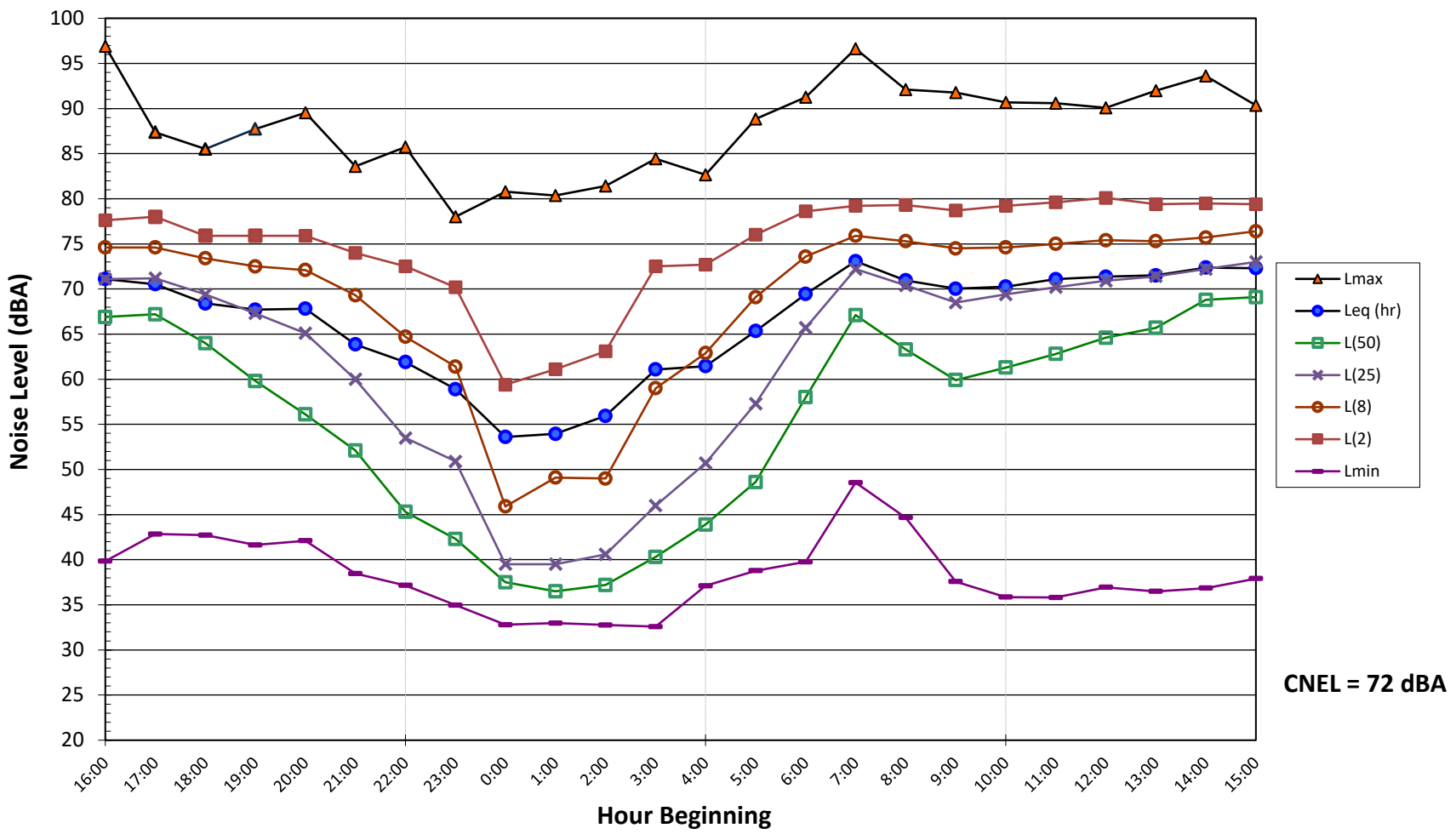
Noise Levels at LT-3
Mercy Springs Rd south of Canal Farm Lane, Los Banos, CA
Wednesday, January 19 - Thursday, January 20, 2022



Noise Levels at LT-3
Mercy Springs Rd south of Canal Farm Lane, Los Banos, CA
Thursday, January 20 - Friday, January 21, 2022



Noise Levels at LT-4
Pioneer Road Road west of Black Hills Avenue, Los Banos, CA
Wednesday, January 19 - Thursday, January 20, 2022



Noise Levels at LT-4
Pioneer Road Road west of Black Hills Avenue, Los Banos, CA
Thursday, January 20 - Friday, January 21, 2022

