

City of Shasta Lake
Public Works Department

Downtown Parking Lot
(4305 Shasta Dam Blvd)
Bid No. 2022-09

DRAWING INDEX

Sheet No.	Description
1	Title Sheet
2	General Project Notes
3	Demolition Plan
4	Site Layout Plan
5	Grading & Drainage Plan
6	Construction Details
7	Landscape Plan
8	Irrigation Plan
9	Landscape & Irrigation Details

ENGINEER:

William Bond
William Bond - City Engineer
RCE No. 69476

XX/XX/XX
Date

APPROVED:

William Bond - City Engineer
RCE No. 69476

Date

Legend

(N) = New (E)=Existing

— — — — —	Approx. Road Centerline	⊗	(E) Water Valve
— W — — — —	(E) Water Main	⊕	(E) Fire Hydrant
— □ — — — —	(E) Water Service & Meter	●	(E) Sanitary Sewer
— SD — — — —	(E) Storm Drain	⊞	(E) Drainage Inlet
— OHU — — — —	(E) Overhead Utility	⊞	(E) Telephone/Power Pole
— X — — — —	(E) Fence	⊞	(E) Pole w/Guy
— SS — — — —	(E) Sanitary Sewer Main	⊞	(E) Sign
⊙	(E) Sanitary Sewer Manhole		

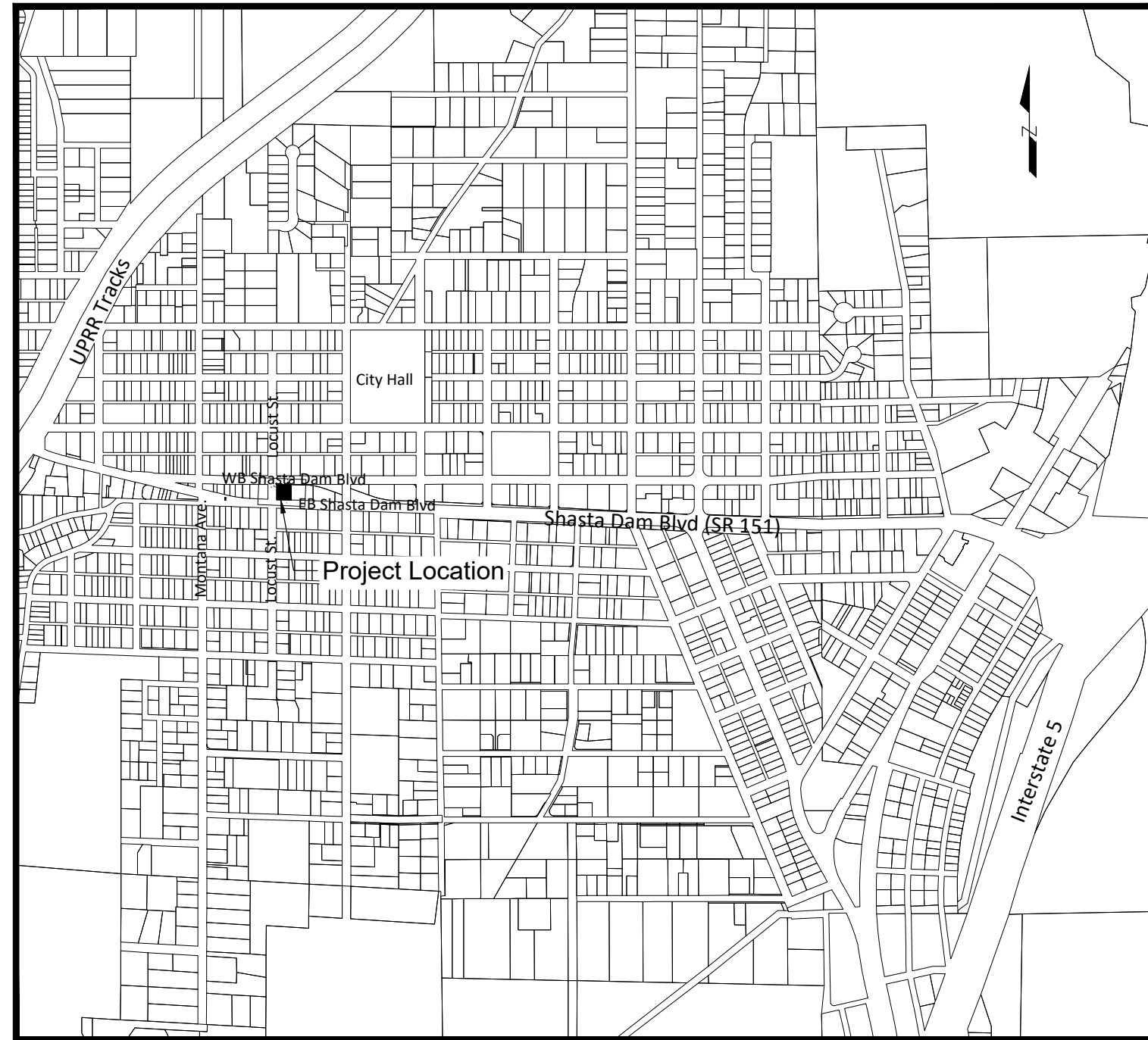
Abbreviations & Acronyms*

CL	Centerline
COSL	City of Shasta Lake
COSLCS	City of Shasta Lake Construction Standards
(E)	Existing
EG	Existing Grade
(N)	New

*Refer to Caltrans Standard Plans for Abbreviations & Acronyms not shown above.



Know what's below.
Call before you dig.
Contractor shall call
Underground Service Alert at
811 two working days prior
to excavation



VICINITY MAP

No Scale

CONTROL POINTS

POINT #	ELEVATION	NORTHING	EASTING	DESCRIPTION
100	799.45	2131566.44	6459434.99	Mag Nail
101	799.30	2131464.26	6459455.02	Mag Nail
102	801.37	2131477.85	6459372.32	Mag Nail

DATUM NOTE
HORIZONTAL DATUM: NAD83, CALIFORNIA STATE PLANE COORDINATE SYSTEM ZONE 1 AS ADJUSTED TO NGS PID AE9983.
VERTICAL DATUM: NAVD88 AS ADJUSTED TO NGS PID AE9983. ELEVATION = 676.70 FEET.

DO NOT COPY

These Plans may not be reproduced unless they are original copies signed in ink by the Engineer. The Engineer preparing these Plans will not be responsible or liable for unauthorized changes or uses of these Plans. All changes to Plans must be in writing and must be approved by the Engineer.

HALF SIZE PRINT
ACTUAL SCALE IS TWICE
WHAT IS SHOWN

A-XXXX

2022-09_LocustParkingLot.dwg

City of Shasta Lake Public Works Department
4477 Main Street, Shasta Lake, CA 96019
(530) 275-7400 ph (530) 275-7462 fax

CITY OF SHASTA LAKE
Public Works Department

Downtown Parking Lot
BID NO. 2022-09

Title Sheet

Scale: None
Date: XX/XX/20XX
Sheet 1 of X

Revisions

By: App.

Designed By: WSB
Drawn By: WSB
Checked By: SN
Approved: [Signature]

City Engineer
RCE # 69476

REGISTERED PROFESSIONAL ENGINEER
WILLIAM S. BOND
No. 69476
Exp. 5/30/22
STATE OF CALIF.

General Project Notes:

1. This project generally consists of the creation of a new parking lot with improvements including existing pavement removal, subgrade preparation, aggregate base, asphalt paving, concrete curb, gutter, sidewalk, flatwork, striping and landscaping per the plans and specifications and the City of Shasta Lake Construction Standards. Areas of work is at an existing parking lot at 4305 Locust Street in Shasta Lake.
2. It is the responsibility of the Contractor to thoroughly examine the job sites, the Contract Documents, and these Plans prior to submitting his bid. No additional payment shall be made by the City for any expense the Contractor may incur as a result of his failure to adequately acquaint himself with the extent of the work to be done, the general site conditions, or the requirements of the Plans, Contract Documents, General Provisions, Technical Specifications, and referenced specifications (AWWA, CAL-OSHA, etc).
3. The Contractor shall contact Underground Service Alert (USA) at (800) 227-2600 at least forty-eight (48) hours, but not less than two (2) working days, PRIOR to any demolition or excavation and request field markings of all underground utilities.
4. The City of Shasta Lake does not guarantee the completeness or accuracy of the existing underground utilities shown on these Plans. The Contractor is solely responsible for field verifying any potential utility conflicts between existing underground utilities and the work shown on these Plans. This includes both potential utility conflicts shown on these Plans and potential utility conflicts not shown on these Plans but either located, found, or marked in the field. Where potential conflicts are found, the Contractor shall take whatever measures are needed (including preliminary potholing of the utilities at the potential conflict location) prior to work in the area to allow time for the responsible agency to correct the conflict. No additional payment shall be made by the City for any expense the Contractor may incur as a result of his failure to adequately explore, in the opinion of the Engineer, potential utility conflicts.
5. Extreme caution shall be exercised by the Contractor when working on or near survey monuments and property corners. MONUMENTS AND CORNERS SHALL NOT BE DISTURBED! If the Contractor does disturb a survey monument or property corner, he shall notify the Engineer immediately, and shall pay all costs associated with resetting the monument or corner to its correct location. Under no circumstances shall personnel other than a licensed Surveyor in the State of California modify existing monuments.
6. Several items of work shown on these Plans (notably valve cluster replacements) must be completed in a single day. The Contractor shall take this requirement into account when preparing his bid and his work plan to ensure that sufficient personnel and equipment are onsite and available to allow the work to be completed as required.
7. If the Contractor wishes to use water from the City of Shasta Lake water distribution system, the Contractor shall request that the City install a hydrant meter, backflow device, and control valve on the fire hydrant designated as the water source. Refer to the Contract Documents for additional information and costs.
8. When any material is to be disposed of outside the project work area, the Contractor shall obtain both a written agreement between the property owner and the Contractor and a copy of the permit that allows material disposal at the subject site. The agreement shall grant the Contractor permission to use the private property as a disposal site, and shall absolve the City of all responsibility for consequences of such usage. The permit copy shall be obtained from the property owner, the Shasta County Building Department, the City of Shasta Lake Building Department, or other regulatory agency as appropriate. Both the agreement and permit shall be filed with the Engineer PRIOR to the use of the property, and the Contractor shall obtain permission from the Engineer to dispose of the material at the proposed location designated in the agreement and on the permit before any material is disposed of on said property.
9. The Contractor shall not use the public right-of-way for long term staging or material storage. During the work day, the Contractor may use the work area for storage of project materials and equipment that will be used that day; however, at the end of the day, the work site shall be cleaned up to the satisfaction of the Engineer. No public or private staging area has been identified for this contract. No use of private land shall used for staging without written approval from property owner.
10. All grades and alignments shown on the Plans shall be subject to adjustment in the field by the Engineer.
11. This is a Public Works prevailing wage project.

HALF SIZE PRINT
ACTUAL SCALE IS TWICE
WHAT IS SHOWN

DO NOT COPY

These Plans may not be reproduced unless they are original copies signed in ink by the Engineer. The Engineer preparing these Plans will not be responsible or liable for unauthorized changes or uses of these Plans. All changes to the Plans must be in writing and must be approved by the Engineer.



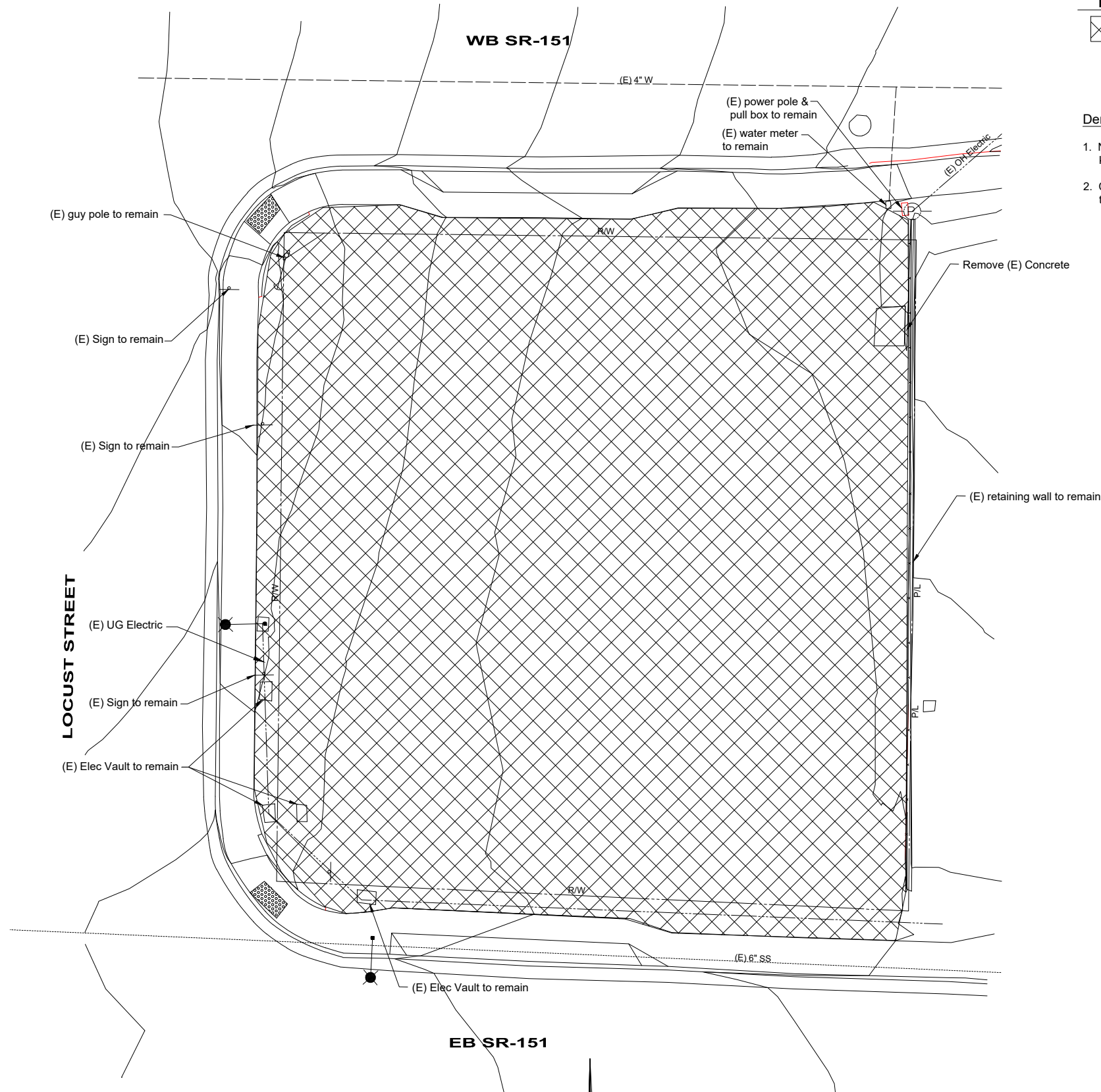
Know what's below.
Call before you dig.

Contractor shall call
Underground Service Alert at
811 two working days prior
to excavation


A-XXXX

2022-09_LocustParkingLot.dwg

Designed By: _____		WSB WSB SN	No. _____	Date _____	Revisions	By: _____
Drawn By: _____						
Checked By: _____						
Approved: _____		City Engineer REC # 68418				
CITY OF SHASTA LAKE Public Works Department 4477 Main Street, Shasta Lake, CA 96019 (530) 275-7400 ph (530) 275-7462 fax						
Downtown Parking Lot BID NO. 2021-05 General Project Notes						
Scale: None						
Date: XX/XX/20XX						
Sheet 1 of X						



Demolition Legend

 Remove Asphalt Concrete (2-4" thick)

Demolition Notes:

1. Not all utilities are shown this plan. Please refer to other sheets for location of existing known utilities.
2. Concrete and other items may be in the demolition limits shall be removed at no cost to the City. Contractor to notify Engineer of such items.

DO NOT COPY

These Plans may not be reproduced unless they are original copies signed in ink by the Engineer. The Engineer preparing these Plans will not be responsible or liable for unauthorized changes or uses of these Plans. All changes to the Plans must be in writing and must be approved by the Engineer.

Demolition Plan

SCALE: 1" = 10'



HALF SIZE PRINT
ACTUAL SCALE IS TWICE
WHAT IS SHOWN

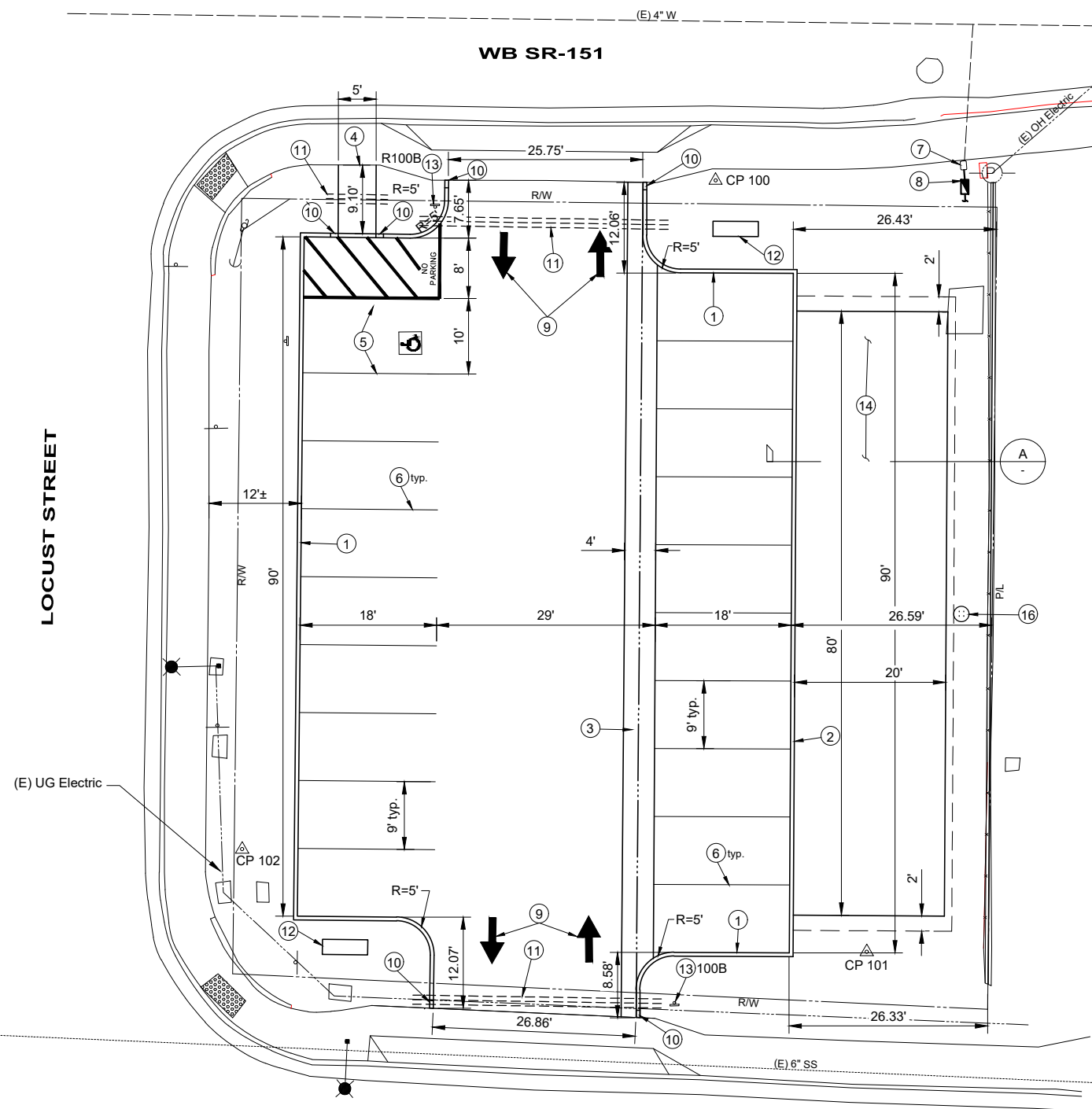


Know what's below.
Call before you dig.
Contractor shall call
Underground Service Alert at
811 two working days prior
to excavation

A-XXXX

2022-09_LocustParkingLot.dwg

Designed By: WSB	Checked By: SN	Approved:	No.	Date	Revisions	By	App.
							
<p>CITY OF SHASTA LAKE Public Works Department 4477 Main Street, Shasta Lake, CA 96019 (530) 275-7400 ph (530) 275-7462 fax</p>							
<p>Downtown Parking Lot BID NO. 2022-09 Demolition Plan</p>							
<p>Scale: None</p>							
<p>Date: XX/XX/20XX</p>							
<p>Sheet 1 of X</p>							

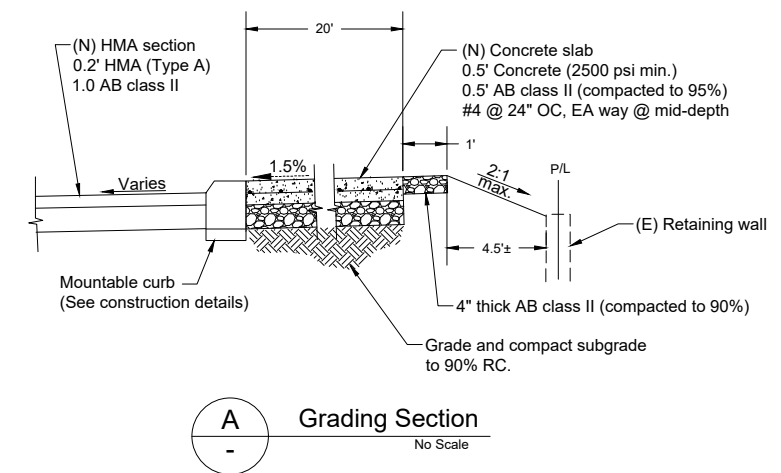


Site Layout Notes:

1. 6" curb transition to 0" shall be paid as 6" curb.
2. Paving section shall be 0.20' of HMA over 1.00' of class 2 aggregate base.
3. Electrical work to be performed by City. Contractor shall allow CoSL staff to perform trenching and electrical work. Engineer to coordinate with contractor.
4. R100B sign shall be mounted at 42" from FG to bottom of sign.

Layout Construction Notes

- 1 6" Curb per COSLCS page 134.00
- 2 Mountable curb, see detail 1, sheet 6.
- 3 4" wide valley gutter per COSLCS 125.50
- 4 Sidewalk (width per plan) per COSLCS 131.00
- 5 Accessible parking stall & loading area per Caltrans standard detail A90A & the California Building Code Title 24 regulations
- 6 4" wide white thermoplastic stripe
- 7 Place new water meter vault to finish grade per COSLCS 400.00
- 8 New 1" RPP & Enclosure per COSLCS 431.10 & 432.25, see irrigation plan for continuation of landscape irrigation.
- 9 Thermoplastic white pavement markings, see detail 2, sheet 6.
- 10 End curb treatment, see detail 3, sheet 6.
- 11 3 each, 4" sch. 40 PVC capped sleeves extended 3' behind curb, per COSLCS 761.00
- 12 Monument sign, see detail 4, sheet 6.
- 13 Sign per COSLCS 152.01
- 14 80' x 20' concrete slab, see grading section, this sheet.
- 15 Concrete wheelstop, see detail 5, sheet 6.
- 16 Concrete street light base per COSLCS SR012. Wire & Light std to be installed by others.



HALF SIZE PRINT
ACTUAL SCALE IS TWICE
WHAT IS SHOWN

EB SR-151
Site Layout Plan
SCALE: 1" = 10'

DO NOT COPY

These Plans may not be reproduced unless they are original copies signed in ink by the Engineer. The Engineer preparing these Plans will not be responsible or liable for unauthorized changes or uses of these Plans. All changes to the Plans must be in writing and must be approved by the Engineer.



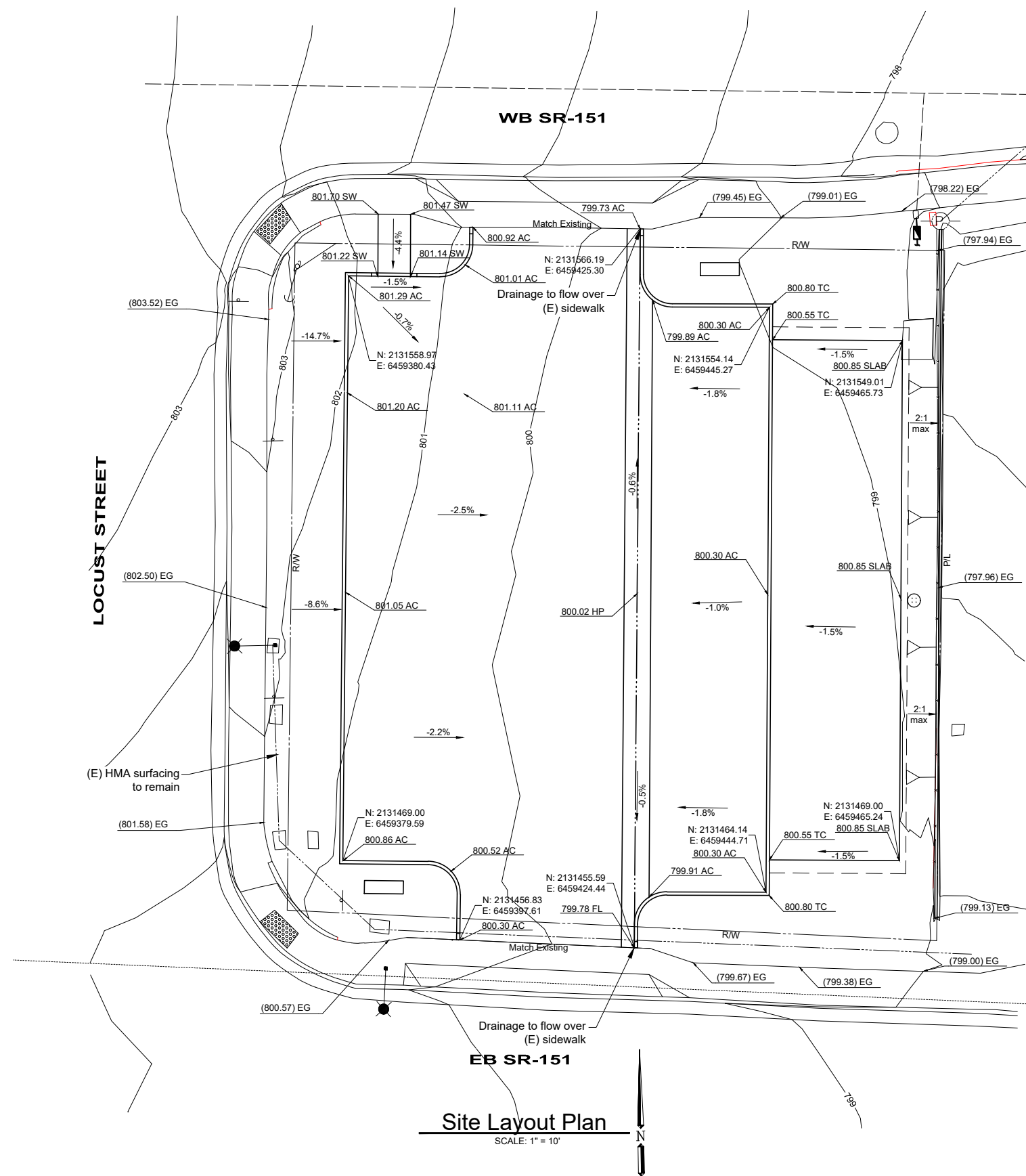
Know what's below.
Call before you dig.

Contractor shall call
Underground Service Alert at
811 two working days prior
to excavation

A-XXXX

2022-09_LocustParkingLot.dwg

Designed By: WSB	Checked By: SN	Approved: _____	City Engineer: _____	No. _____	Date _____	Revisions _____	By: _____
CITY OF SHASTA LAKE Public Works Department 4477 Main Street, Shasta Lake, CA 96019 (530) 275-7400 ph (530) 275-7462 fax							
CITY OF SHASTA LAKE 							
Downtown Parking Lot BID NO. 2022-09 Site Layout Plan							
Scale:	None						
Date:	XX/XX/20XX						
Sheet	1 of X						



Grading Plan Legend

- (E) Contour
- Top of slope
- 5:1 slope or steeper, noted on plans
- Flowline
- Slope & direction
- Proposed elevation tag
- Existing elevation tag

HALF SIZE PRINT
ACTUAL SCALE IS TWICE
WHAT IS SHOWN

DO NOT COPY

These Plans may not be reproduced unless they are original copies signed in ink by the Engineer. The Engineer preparing these Plans will not be responsible or liable for unauthorized changes or uses of these Plans. All changes to the Plans must be in writing and must be approved by the Engineer.



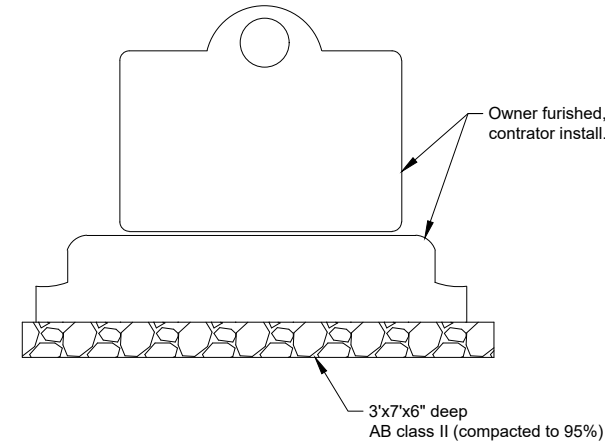
Know what's below.
Call before you dig.

Contractor shall call
Underground Service Alert at
811 two working days prior
to excavation

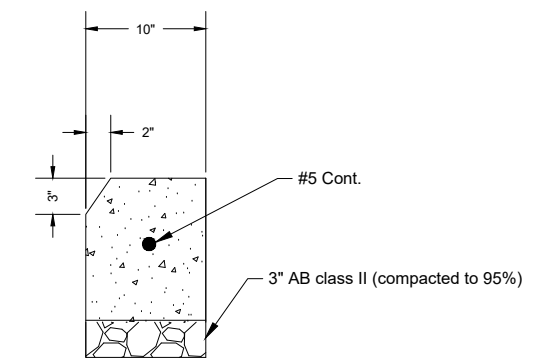
A-XXXX

2022-09_LocustParkingLot.dwg

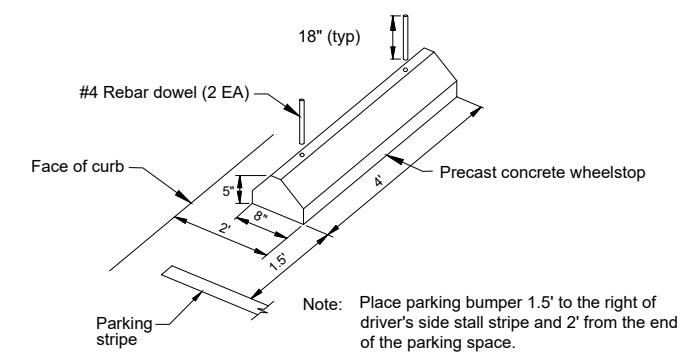
Designed By: WSB	Checked By: SN	Approved:	No.	Date	Revisions	By	App.
<p>CITY OF SHASTA LAKE Public Works Department 4477 Main Street, Shasta Lake, CA 96019 (530) 275-7400 ph (530) 275-7462 fax</p>							
<p>Downtown Parking Lot BID NO. 2022-09 Grading & Drainage Plan</p>							
Scale:	None						
Date:	XX/XX/20XX						
Sheet	1 of X						



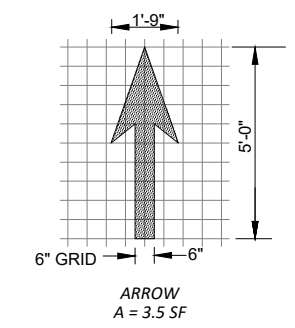
4
6 **MONUMENT SIGN**
No Scale



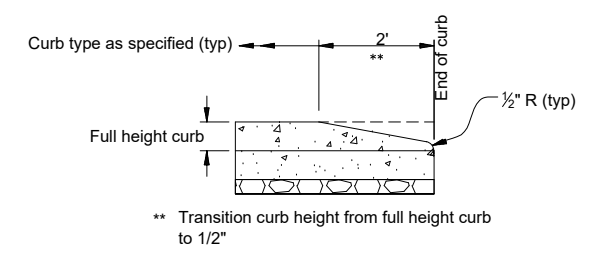
1
6 **MOUNTABLE CURB**
No Scale



5
6 **Concrete Wheelstop**
No Scale



2
6 **ARROW MARKING**
No Scale



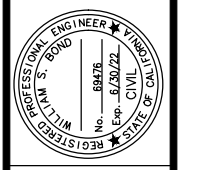
3
6 **END CURB TREATMENT**
No Scale

HALF SIZE PRINT
ACTUAL SCALE IS TWICE
WHAT IS SHOWN

DO NOT COPY

These Plans may not be reproduced unless they are original copies signed in ink by the Engineer. The Engineer preparing these Plans will not be responsible or liable for unauthorized changes or uses of these Plans. All changes to the Plans must be in writing and must be approved by the Engineer.

Designed By:	WSB	Revisions	
Drawn By:	WSB	Date	
Checked By:	SN	No.	
Approved:		By	App.
City Engineer	RCE # 68418		



CITY OF SHASTA LAKE
Public Works Department
4477 Main Street, Shasta Lake, CA 96019
(530) 275-7400 ph (530) 275-7462 fax



Downtown Parking Lot
BID NO. 2022-09
Construction Details

Scale:	None
Date:	XX/XX/20XX
Sheet	1 of X