

Appendix B Lighting System Plan

Appendices

This page intentionally left blank.

Del Norte High School Baseball Softball LED

San Diego, CA

Lighting System

Pole / Fixture Summary						
Pole ID	Pole Height	Mtg Height	Fixture Qty	Luminaire Type	Load	Circuit
A1-A2	80'	80'	4	TLC-LED-1500	5.72 kW	A
		20'	1	TLC-BT-575	0.58 kW	A
		65'	1	FUTURE	0.40 kW	C
A3-A4	70'	70'	3	TLC-LED-900	2.67 kW	B
		20'	1	TLC-BT-575	0.58 kW	B
		65'	1	FUTURE	0.40 kW	C
B1-B2	90'	90'	3	TLC-LED-1500	4.29 kW	A
		90'	4	TLC-LED-900	3.56 kW	A
		20'	1	TLC-BT-575	0.58 kW	A
B3	70'	80'	2	TLC-LED-1200	2.34 kW	A
		70'	1	TLC-LED-1200	1.17 kW	B
		70'	1	TLC-LED-600	0.58 kW	B
B4	70'	70'	3	TLC-LED-900	2.67 kW	B
		20'	1	TLC-BT-575	0.58 kW	B
		60'	1	TLC-LED-900	0.89 kW	B
C1-C2	70'	70'	1	TLC-LED-1500	1.43 kW	A
		70'	2	TLC-LED-900	1.78 kW	A
		16'	1	TLC-BT-575	0.58 kW	A
C3-C4	60'	60'	3	TLC-LED-900	2.67 kW	B
		16'	1	TLC-BT-575	0.58 kW	B
		70'	2	TLC-LED-1500	2.86 kW	A
D1-D2	70'	70'	1	TLC-LED-900	0.89 kW	A
		16'	1	TLC-BT-575	0.58 kW	A
		16'	1	TLC-BT-575	0.58 kW	A
14			80		77.00 kW	

Circuit Summary			
Circuit	Description	Load	Fixture Qty
A	Baseball	50.34 kW	46
B	Softball	25.06 kW	30
C	Egress	1.6 kW	4

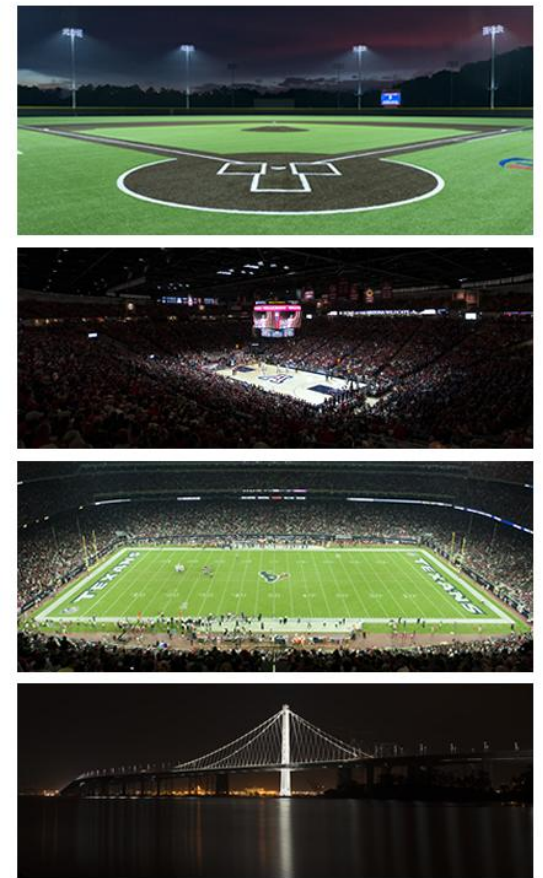
Fixture Type Summary							
Type	Source	Wattage	Lumens	L90	L80	L70	Quantity
TLC-LED-600	LED 5700K - 75 CRI	580W	65,600	>120,000	>120,000	>120,000	1
TLC-LED-1500	LED 5700K - 75 CRI	1430W	160,000	>120,000	>120,000	>120,000	20
TLC-LED-900	LED 5700K - 75 CRI	890W	89,600	>120,000	>120,000	>120,000	35
TLC-LED-1200	LED 5700K - 75 CRI	1170W	136,000	>120,000	>120,000	>120,000	6
TLC-BT-575	LED 5700K - 75 CRI	575W	52,000	>120,000	>120,000	>120,000	14

Light Level Summary

Calculation Grid Summary								
Grid Name	Calculation Metric	Illumination					Circuits	Fixture Qty
		Ave	Min	Max	Max/Min	Ave/Min		
BB LF Bull Pen	Horizontal	41	23	56	2.50	1.78	A	46
BB RF Bull Pen	Horizontal	41.7	23	56	2.39	1.81	A	46
Baseball (Infield)	Horizontal Illuminance	52.6	38	60	1.57	1.38	A	46
Baseball (Outfield)	Horizontal Illuminance	32.1	23	50	2.20	1.40	A	46
Far Sidewalk Spill	Horizontal	0	0	0	0.00		A,B,C,D,E	80
Far Sidewalk Spill	Max Candela (by Fixture)	61.7	0.01	473	33055.44	6165.75	A,B,C,D,E	80
Far Sidewalk Spill	Max Vertical Illuminance Metric	0	0	0.01	0.00		A,B,C,D,E	80
Near Sidewalk Spill	Horizontal	0.12	0	2.88	0.00		A,B,C,D,E	80
Near Sidewalk Spill	Max Candela (by Fixture)	1754	0	33336	0.00		A,B,C,D,E	80
Near Sidewalk Spill	Max Vertical Illuminance Metric	0.16	0	3.06	0.00		A,B,C,D,E	80
Road Spill	Horizontal	0	0	0.04	0.00		A,B,C,D,E	80

ENGINEERED DESIGN By: H.Sabers · File #210683E · 08-Apr-22

From Hometown to Professional



We Make It Happen.

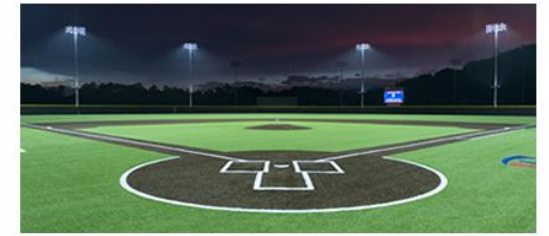
Not to be reproduced in whole or part without the written consent of Musco Sports Lighting, LLC. ©1981, 2022 Musco Sports Lighting, LLC.

Del Norte High School Baseball Softball LED

San Diego, CA

Calculation Grid Summary								
Grid Name	Calculation Metric	Illumination					Circuits	Fixture Qty
		Ave	Min	Max	Max/Min	Ave/Min		
Road Spill	Max Candela (by Fixture)	151	0	1222	0.00		A,B,C,D,E	80
Road Spill	Max Vertical Illuminance Metric	0.01	0	0.07	0.00		A,B,C,D,E	80
SB LF Bull Pen	Horizontal	41.5	22	55	2.47	1.88	B	30
SB RF Bull Pen	Horizontal	42.1	26	55	2.16	1.62	B	30
Softball (Infield)	Horizontal Illuminance	50.6	37	58	1.58	1.37	B	30
Softball (Outfield)	Horizontal Illuminance	35	21	48	2.27	1.67	B	30
Spill 0 Grid	Horizontal	1.49	0	32	131771.50		A,B,C,D,E	80

From Hometown to Professional



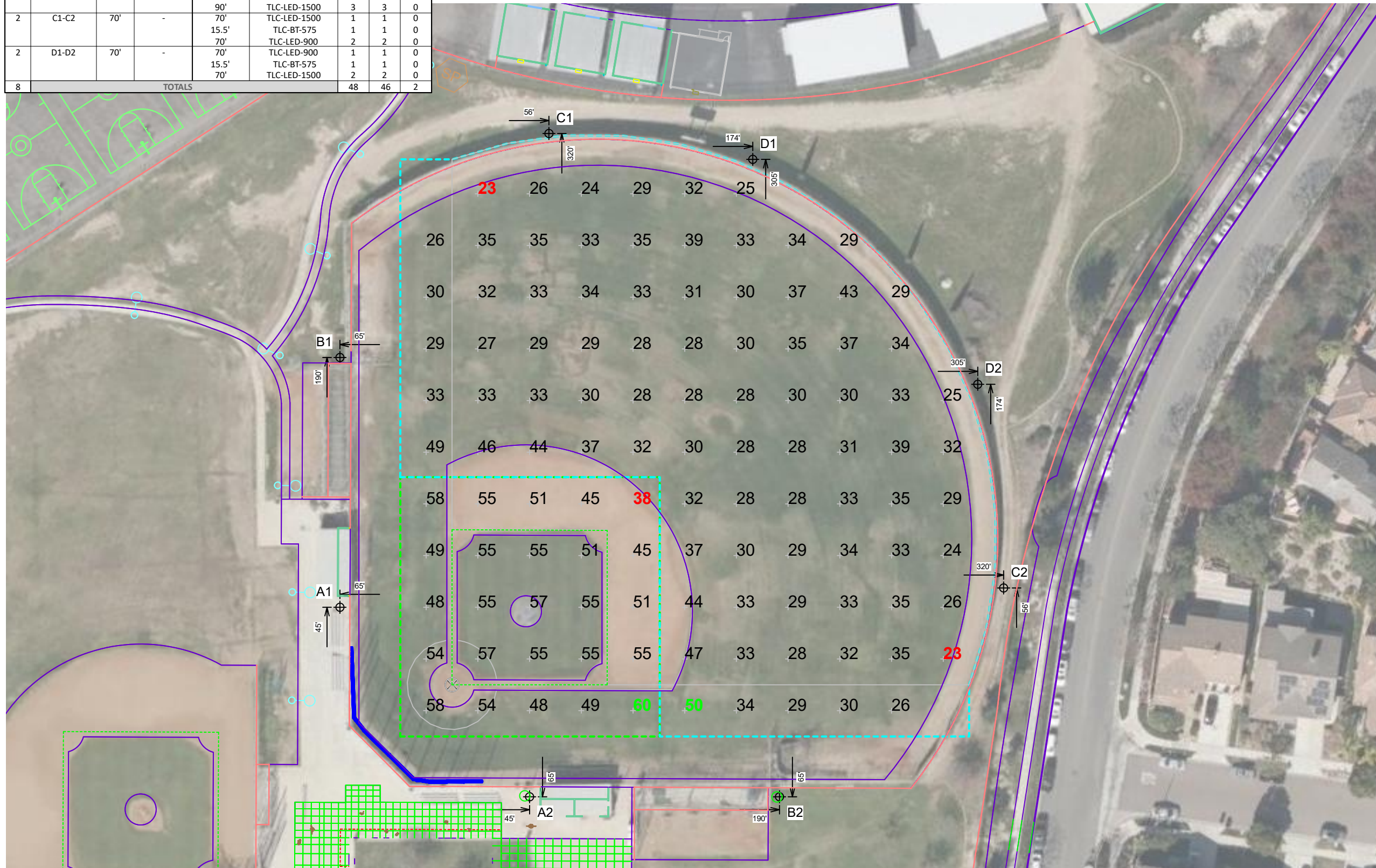
We Make It Happen.

Not to be reproduced in whole or part without the written consent of Musco Sports Lighting, LLC. ©1981, 2022 Musco Sports Lighting, LLC.

EQUIPMENT LIST FOR AREAS SHOWN									
Pole				Luminaires					
QTY	LOCATION	SIZE	GRADE ELEVATION	MOUNTING HEIGHT	LUMINAIRE TYPE	QTY / POLE	THIS GRID	OTHER GRIDS	
2	A1-A2	80'	-	20'	TLC-BT-575	1	1	0	
				65'	TLC-LED-400	1	0	1	
				80'	TLC-LED-1500	4	4	0	
2	B1-B2	90'	-	90'	TLC-LED-900	4	4	0	
				20'	TLC-BT-575	1	1	0	
				80'	TLC-LED-1200	2	2	0	
				90'	TLC-LED-1500	3	3	0	
2	C1-C2	70'	-	70'	TLC-LED-1500	1	1	0	
				15.5'	TLC-BT-575	1	1	0	
				70'	TLC-LED-900	2	2	0	
2	D1-D2	70'	-	70'	TLC-LED-900	1	1	0	
				15.5'	TLC-BT-575	1	1	0	
				70'	TLC-LED-1500	2	2	0	
8	TOTALS					48	46	2	

GRID SUMMARY	
Name:	Baseball
Size:	305'/352'/300' - basepath 90'
Spacing:	30.0' x 30.0'
Height:	3.0' above grade

ILLUMINATION SUMMARY		
MAINTAINED HORIZONTAL FOOTCANDLES		
	Infield	Outfield
Guaranteed Average:	50	30
Scan Average:	52.62	32.12
Maximum:	60	50
Minimum:	38	23
Avg / Min:	1.38	1.42
Guaranteed Max / Min:	2	2.5
Max / Min:	1.57	2.20
UG (adjacent pts):	1.20	1.53
CU:	0.67	
No. of Points:	25	86
LUMINAIRE INFORMATION		
Applied Circuits:	A	
No. of Luminaires:	46	
Total Load:	50.34 kW	

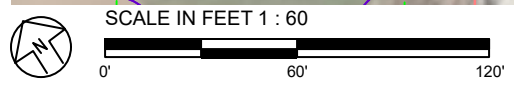


Guaranteed Performance: The ILLUMINATION described above is guaranteed per your Musco Warranty document and includes a 0.95 dirt depreciation factor.

Field Measurements: Individual field measurements may vary from computer-calculated predictions and should be taken in accordance with IESNA RP-6-15.

Electrical System Requirements: Refer to Amperage Draw Chart and/or the "Musco Control System Summary" for electrical sizing.

Installation Requirements: Results assume ± 3% nominal voltage at line side of the driver and structures located within 3 feet (1m) of design locations.



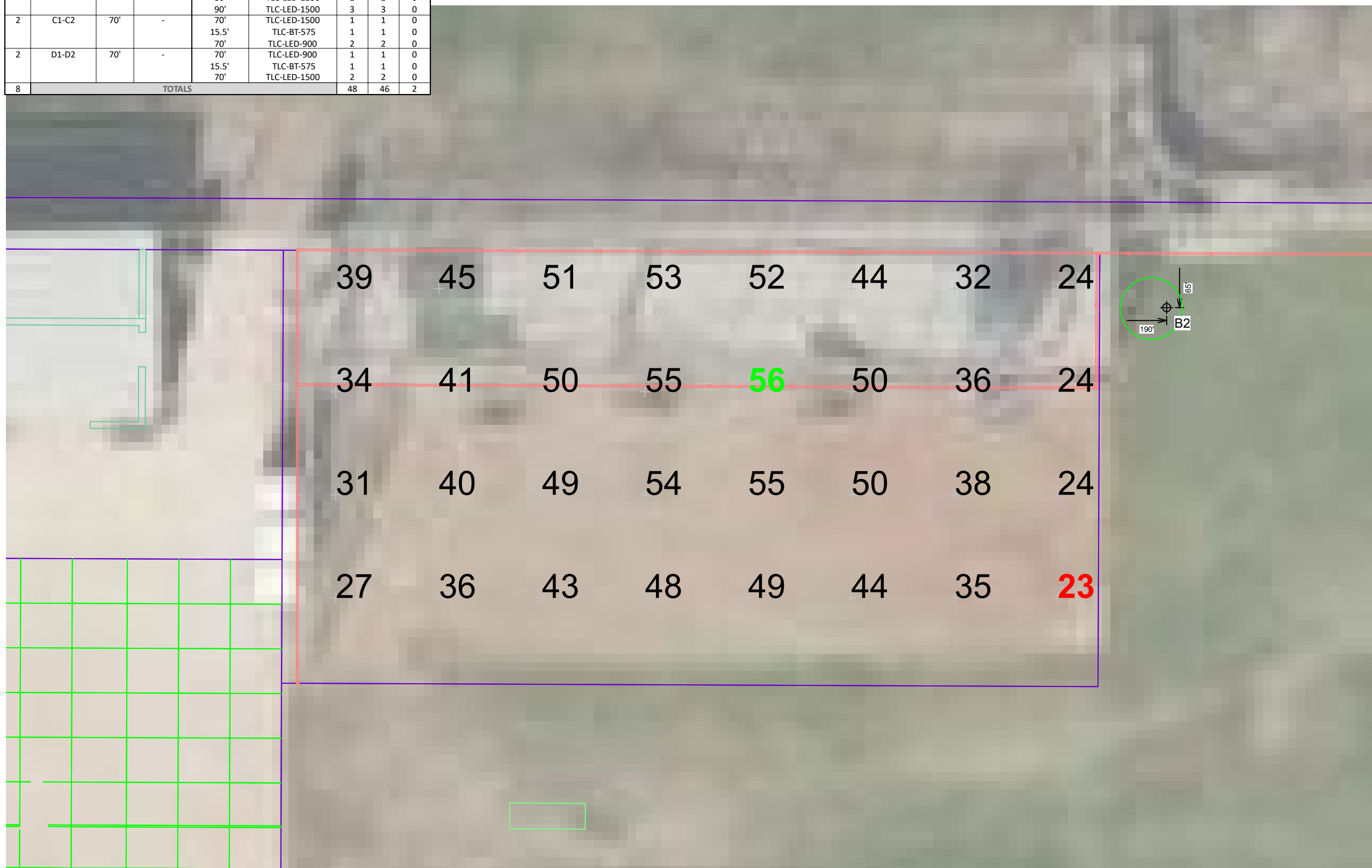
Pole location(s) Ⓢ dimensions are relative to 0,0 reference point(s) ⊗



EQUIPMENT LIST FOR AREAS SHOWN									
Pole				Luminaires					
QTY	LOCATION	SIZE	GRADE ELEVATION	MOUNTING HEIGHT	LUMINAIRE TYPE	QTY / POLE	THIS GRID	OTHER GRIDS	
2	A1-A2	80'	-	20'	TLC-BT-575	1	1	0	
				65'	TLC-LED-400	1	0	1	
				80'	TLC-LED-1500	4	4	0	
2	B1-B2	90'	-	90'	TLC-LED-900	4	4	0	
				20'	TLC-BT-575	1	1	0	
				80'	TLC-LED-1200	2	2	0	
				90'	TLC-LED-1500	3	3	0	
2	C1-C2	70'	-	70'	TLC-LED-1500	1	1	0	
				15.5'	TLC-BT-575	1	1	0	
				70'	TLC-LED-900	2	2	0	
2	D1-D2	70'	-	70'	TLC-LED-900	1	1	0	
				15.5'	TLC-BT-575	1	1	0	
				70'	TLC-LED-1500	2	2	0	
8	TOTALS					48	46	2	

GRID SUMMARY	
Name:	BB RF Bull Pen
Size:	305'/352'/300' - basepath 90'
Spacing:	10.0' x 10.0'
Height:	3.0' above grade

ILLUMINATION SUMMARY	
MAINTAINED HORIZONTAL FOOTCANDLES	
	Entire Grid
Scan Average:	41.65
Maximum:	56
Minimum:	23
Avg / Min:	1.77
Max / Min:	2.39
UG (adjacent pts):	1.55
CU:	0.02
No. of Points:	32
LUMINAIRE INFORMATION	
Applied Circuits:	A
No. of Luminaires:	46
Total Load:	50.34 kW

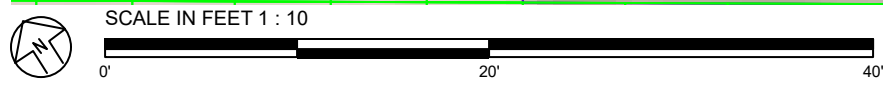


Guaranteed Performance: The ILLUMINATION described above is guaranteed per your Musco Warranty document and includes a 0.95 dirt depreciation factor.

Field Measurements: Individual field measurements may vary from computer-calculated predictions and should be taken in accordance with IESNA RP-6-15.

Electrical System Requirements: Refer to Amperage Draw Chart and/or the "Musco Control System Summary" for electrical sizing.

Installation Requirements: Results assume ± 3% nominal voltage at line side of the driver and structures located within 3 feet (1m) of design locations.



Pole location(s) ⊕ dimensions are relative to 0,0 reference point(s) ⊗



EQUIPMENT LIST FOR AREAS SHOWN							
Pole				Luminaires			
QTY	LOCATION	SIZE	GRADE ELEVATION	MOUNTING HEIGHT	LUMINAIRE TYPE	QTY / POLE	THIS GRID OTHER GRIDS
2	A1-A2	80'	-	20'	TLC-BT-575	1	1 0
				65'	TLC-LED-400	1	0 1
				80'	TLC-LED-1500	4	4 0
2	B1-B2	90'	-	90'	TLC-LED-900	4	4 0
				20'	TLC-BT-575	1	1 0
				80'	TLC-LED-1200	2	2 0
				90'	TLC-LED-1500	3	3 0
2	C1-C2	70'	-	70'	TLC-LED-1500	1	1 0
				15.5'	TLC-BT-575	1	1 0
				70'	TLC-LED-900	2	2 0
2	D1-D2	70'	-	70'	TLC-LED-900	1	1 0
				15.5'	TLC-BT-575	1	1 0
				70'	TLC-LED-1500	2	2 0
8	TOTALS					48	46 2

GRID SUMMARY	
Name:	BB LF Bull Pen
Size:	305'/352'/300' - basepath 90'
Spacing:	10.0' x 10.0'
Height:	3.0' above grade

ILLUMINATION SUMMARY	
MAINTAINED HORIZONTAL FOOTCANDLES	
	Entire Grid
Scan Average:	40.99
Maximum:	56
Minimum:	23
Avg / Min:	1.82
Max / Min:	2.50
UG (adjacent pts):	1.48
CU:	0.02
No. of Points:	32
LUMINAIRE INFORMATION	
Applied Circuits:	A
No. of Luminaires:	46
Total Load:	50.34 kW

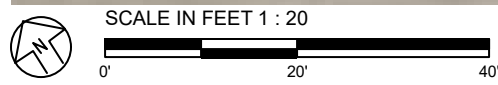


Guaranteed Performance: The ILLUMINATION described above is guaranteed per your Musco Warranty document and includes a 0.95 dirt depreciation factor.

Field Measurements: Individual field measurements may vary from computer-calculated predictions and should be taken in accordance with IESNA RP-6-15.

Electrical System Requirements: Refer to Amperage Draw Chart and/or the "Musco Control System Summary" for electrical sizing.

Installation Requirements: Results assume ± 3% nominal voltage at line side of the driver and structures located within 3 feet (1m) of design locations.



Pole location(s) ⊕ dimensions are relative to 0,0 reference point(s) ⊗



We Make It Happen.

EQUIPMENT LIST FOR AREAS SHOWN									
Pole				Luminaires					
QTY	LOCATION	SIZE	GRADE ELEVATION	MOUNTING HEIGHT	LUMINAIRE TYPE	QTY / POLE	THIS GRID	OTHER GRIDS	
2	A3-A4	70'	-	20'	TLC-BT-575	1	1	0	
				65'	TLC-LED-400	1	0	1	
				70'	TLC-LED-900	3	3	0	
1	B3	70'	-	70'	TLC-LED-900	3	3	0	
				70'	TLC-LED-1200	1	1	0	
				20'	TLC-BT-575	1	1	0	
				60'	TLC-LED-900	1	1	0	
				70'	TLC-LED-900	1	1	0	
				70'	TLC-LED-600	1	1	0	
1	B4	70'	-	70'	TLC-LED-900	4	4	0	
				20'	TLC-BT-575	1	1	0	
				60'	TLC-LED-900	1	1	0	
				70'	TLC-LED-1200	1	1	0	
2	C3-C4	60'	-	15.5'	TLC-BT-575	1	1	0	
				60'	TLC-LED-900	3	3	0	
6	TOTALS					32	30	2	

GRID SUMMARY	
Name:	Softball
Size:	200'/200'/200' - basepath 60'
Spacing:	20.0' x 20.0'
Height:	3.0' above grade

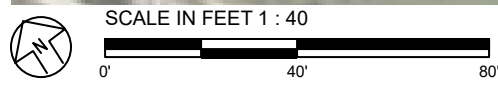
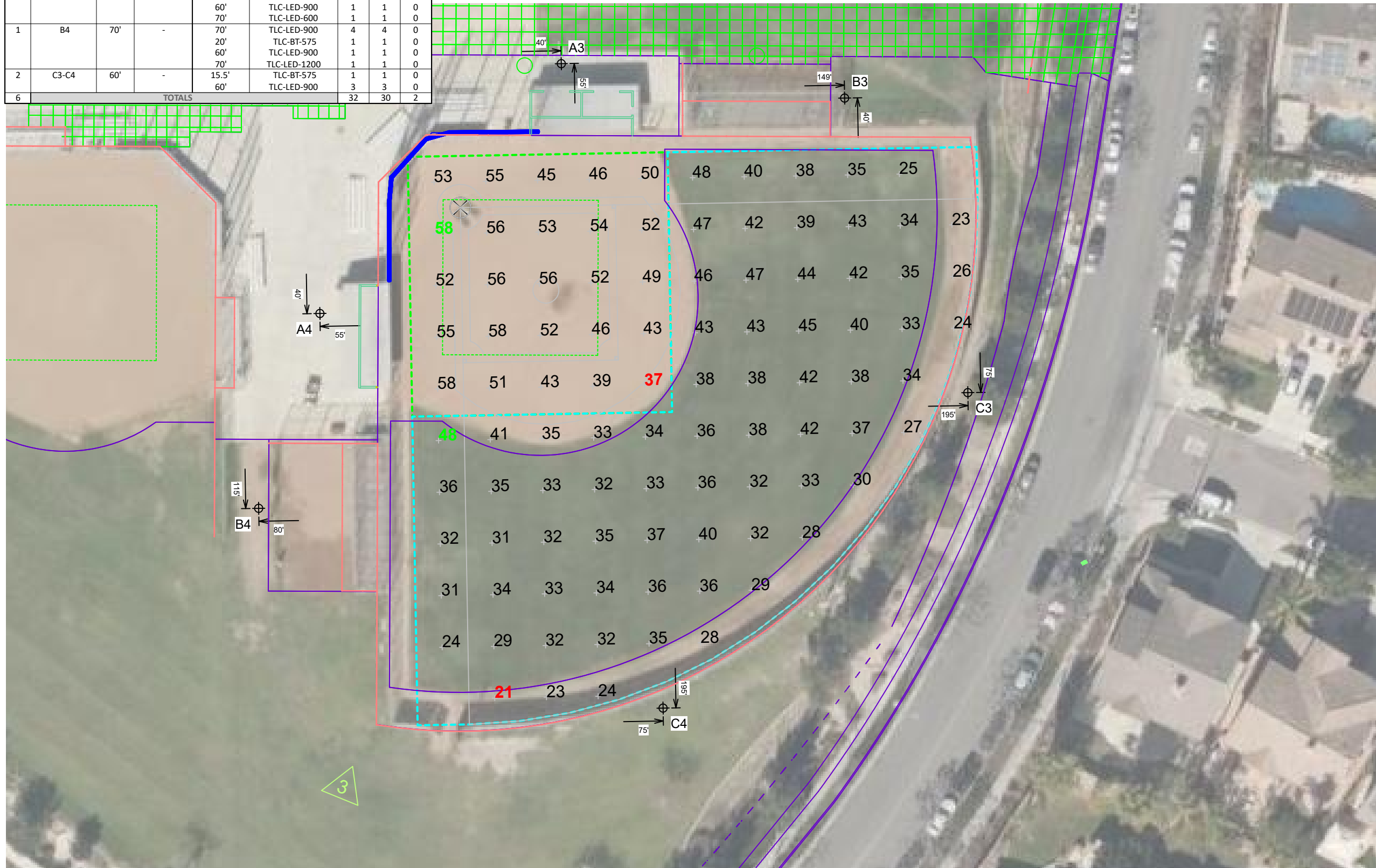
ILLUMINATION SUMMARY		
MAINTAINED HORIZONTAL FOOTCANDLES		
	Infield	Outfield
Guaranteed Average:	50	30
Scan Average:	50.56	35.03
Maximum:	58	48
Minimum:	37	21
Avg / Min:	1.38	1.66
Guaranteed Max / Min:	2	2.5
Max / Min:	1.58	2.27
UG (adjacent pts):	1.22	1.47
CU:	0.58	
No. of Points:	25	71
LUMINAIRE INFORMATION		
Applied Circuits:	B	
No. of Luminaires:	30	
Total Load:	25.06 kW	

Guaranteed Performance: The ILLUMINATION described above is guaranteed per your Musco Warranty document and includes a 0.95 dirt depreciation factor.

Field Measurements: Individual field measurements may vary from computer-calculated predictions and should be taken in accordance with IESNA RP-6-15.

Electrical System Requirements: Refer to Amperage Draw Chart and/or the "Musco Control System Summary" for electrical sizing.

Installation Requirements: Results assume ± 3% nominal voltage at line side of the driver and structures located within 3 feet (1m) of design locations.



Pole location(s) Ⓢ dimensions are relative to 0,0 reference point(s) ⊗



EQUIPMENT LIST FOR AREAS SHOWN							
Pole				Luminaires			
QTY	LOCATION	SIZE	GRADE ELEVATION	MOUNTING HEIGHT	LUMINAIRE TYPE	QTY / POLE	THIS GRID
2	A3-A4	70'	-	20'	TLC-BT-575	1	1
				65'	TLC-LED-400	1	0
				70'	TLC-LED-900	3	3
1	B3	70'	-	70'	TLC-LED-900	3	3
				70'	TLC-LED-1200	1	1
				20'	TLC-BT-575	1	1
				60'	TLC-LED-900	1	1
				70'	TLC-LED-600	1	1
				70'	TLC-LED-900	4	4
1	B4	70'	-	20'	TLC-BT-575	1	1
				60'	TLC-LED-900	1	1
				70'	TLC-LED-1200	1	1
				70'	TLC-LED-900	1	1
2	C3-C4	60'	-	15.5'	TLC-BT-575	1	1
				60'	TLC-LED-900	3	3
6	TOTALS					32	30

GRID SUMMARY	
Name:	SB LF Bull Pen
Size:	200'/200'/200' - basepath 60'
Spacing:	10.0' x 10.0'
Height:	3.0' above grade

ILLUMINATION SUMMARY	
MAINTAINED HORIZONTAL FOOTCANDLES	
Entire Grid	
Scan Average:	41.45
Maximum:	55
Minimum:	22
Avg / Min:	1.85
Max / Min:	2.47
UG (adjacent pts):	1.38
CU:	0.03
No. of Points:	18
LUMINAIRE INFORMATION	
Applied Circuits:	B
No. of Luminaires:	30
Total Load:	25.06 kW

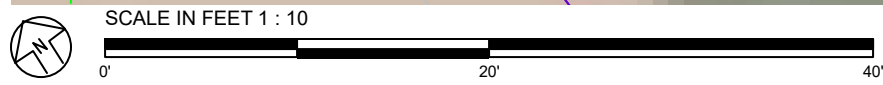


Guaranteed Performance: The ILLUMINATION described above is guaranteed per your Musco Warranty document and includes a 0.95 dirt depreciation factor.

Field Measurements: Individual field measurements may vary from computer-calculated predictions and should be taken in accordance with IESNA RP-6-15.

Electrical System Requirements: Refer to Amperage Draw Chart and/or the "Musco Control System Summary" for electrical sizing.

Installation Requirements: Results assume ± 3% nominal voltage at line side of the driver and structures located within 3 feet (1m) of design locations.



Pole location(s) ⊕ dimensions are relative to 0,0 reference point(s) ⊗



We Make It Happen.

EQUIPMENT LIST FOR AREAS SHOWN							
Pole				Luminaires			
QTY	LOCATION	SIZE	GRADE ELEVATION	MOUNTING HEIGHT	LUMINAIRE TYPE	QTY / POLE	THIS GRID
2	A3-A4	70'	-	20'	TLC-BT-575	1	1
				65'	TLC-LED-400	1	0
				70'	TLC-LED-900	3	3
1	B3	70'	-	70'	TLC-LED-900	3	3
				70'	TLC-LED-1200	1	1
				20'	TLC-BT-575	1	1
				60'	TLC-LED-900	1	1
				70'	TLC-LED-600	1	1
				70'	TLC-LED-900	4	4
1	B4	70'	-	20'	TLC-BT-575	1	1
				60'	TLC-LED-900	1	1
				70'	TLC-LED-1200	1	1
				70'	TLC-LED-900	1	1
2	C3-C4	60'	-	15.5'	TLC-BT-575	1	1
				60'	TLC-LED-900	3	3
6	TOTALS					32	30

GRID SUMMARY	
Name:	SB RF Bull Pen
Size:	200'/200'/200' - basepath 60'
Spacing:	10.0' x 10.0'
Height:	3.0' above grade

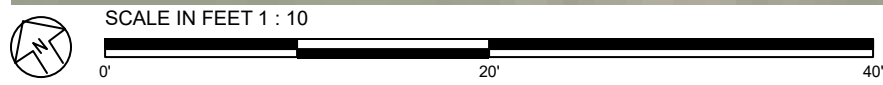
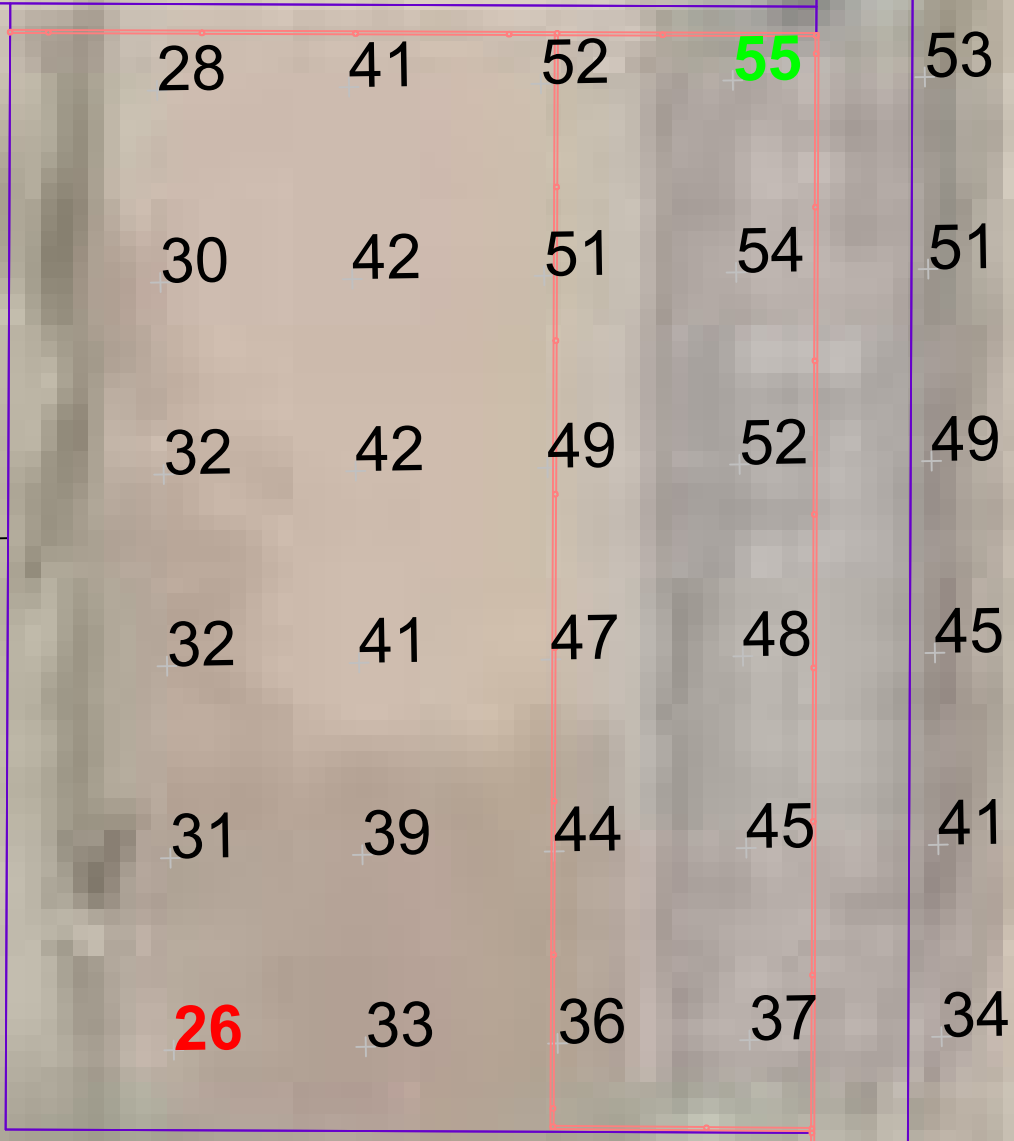
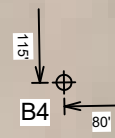
ILLUMINATION SUMMARY	
MAINTAINED HORIZONTAL FOOTCANDLES	
Entire Grid	
Scan Average:	42.06
Maximum:	55
Minimum:	26
Avg / Min:	1.64
Max / Min:	2.16
UG (adjacent pts):	1.47
CU:	0.05
No. of Points:	30
LUMINAIRE INFORMATION	
Applied Circuits:	B
No. of Luminaires:	30
Total Load:	25.06 kW

Guaranteed Performance: The ILLUMINATION described above is guaranteed per your Musco Warranty document and includes a 0.95 dirt depreciation factor.

Field Measurements: Individual field measurements may vary from computer-calculated predictions and should be taken in accordance with IESNA RP-6-15.

Electrical System Requirements: Refer to Amperage Draw Chart and/or the "Musco Control System Summary" for electrical sizing.

Installation Requirements: Results assume ± 3% nominal voltage at line side of the driver and structures located within 3 feet (1m) of design locations.



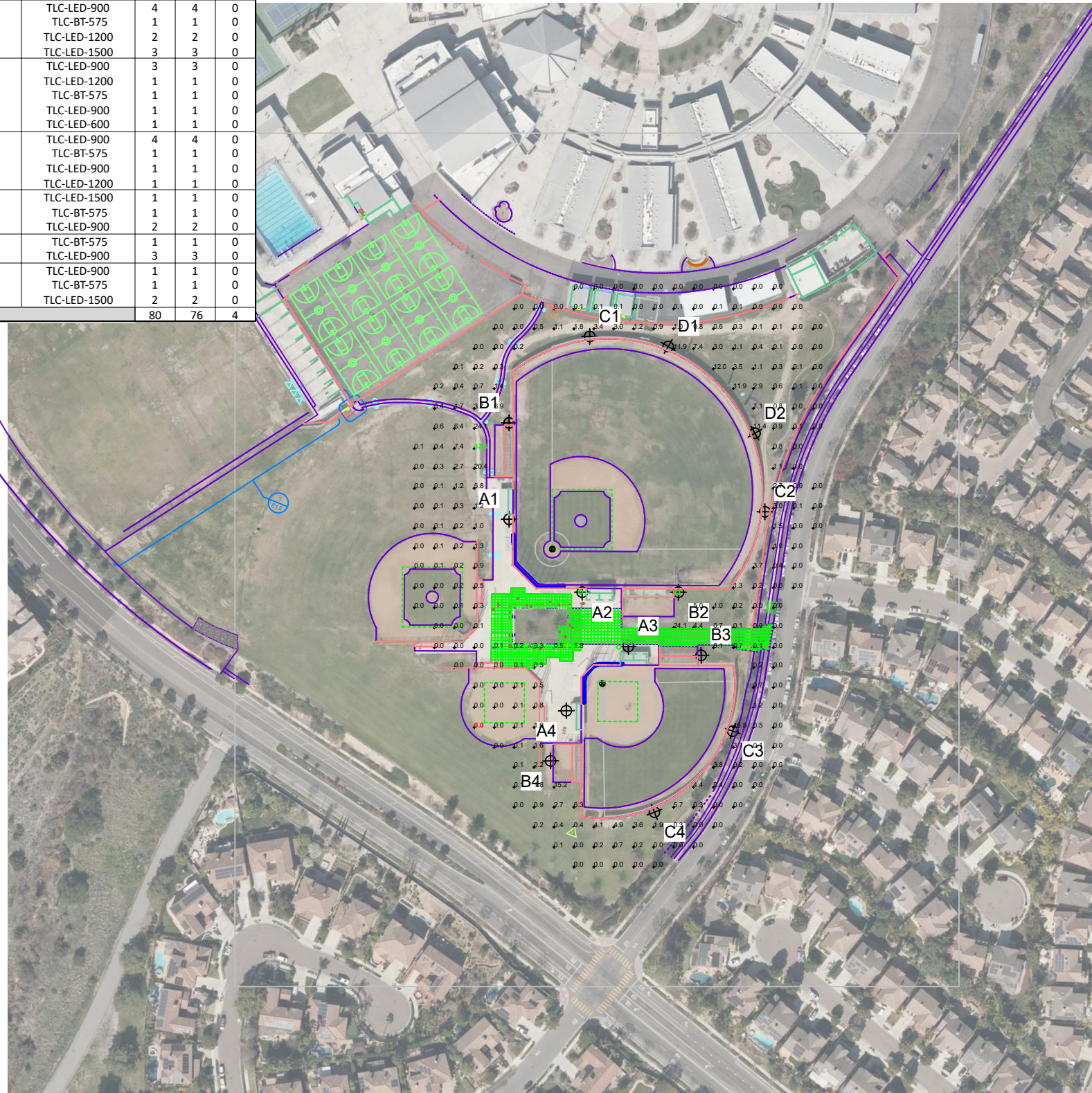
Pole location(s) ⊕ dimensions are relative to 0,0 reference point(s) ⊗



We Make It Happen.

EQUIPMENT LIST FOR AREAS SHOWN

Pole		Luminaires							
QTY	LOCATION	SIZE	GRADE ELEVATION	MOUNTING HEIGHT	LUMINAIRE TYPE	QTY / POLE	THIS GRID	OTHER GRIDS	
2	A1-A2	80'	-	20'	TLC-BT-575	1	1	0	
				65'	TLC-LED-400	1	0	1	
				80'	TLC-LED-1500	4	4	0	
2	A3-A4	70'	-	20'	TLC-BT-575	1	1	0	
				65'	TLC-LED-400	1	0	1	
				70'	TLC-LED-900	3	3	0	
2	B1-B2	90'	-	90'	TLC-LED-900	4	4	0	
				20'	TLC-BT-575	1	1	0	
				80'	TLC-LED-1200	2	2	0	
				90'	TLC-LED-1500	3	3	0	
1	B3	70'	-	70'	TLC-LED-900	3	3	0	
				70'	TLC-LED-1200	1	1	0	
				20'	TLC-BT-575	1	1	0	
				60'	TLC-LED-900	1	1	0	
				70'	TLC-LED-600	1	1	0	
1	B4	70'	-	70'	TLC-LED-900	4	4	0	
				20'	TLC-BT-575	1	1	0	
				60'	TLC-LED-900	1	1	0	
				70'	TLC-LED-1200	1	1	0	
2	C1-C2	70'	-	70'	TLC-LED-1500	1	1	0	
				15.5'	TLC-BT-575	1	1	0	
2	C3-C4	60'	-	15.5'	TLC-BT-575	1	1	0	
				60'	TLC-LED-900	3	3	0	
2	D1-D2	70'	-	70'	TLC-LED-900	1	1	0	
				15.5'	TLC-BT-575	1	1	0	
				70'	TLC-LED-1500	2	2	0	
14	TOTALS						80	76	4



Del Norte High School Baseball Softball LED San Diego, CA

GRID SUMMARY	
Name:	Spill 0 Grid
Spacing:	30.0' x 30.0'
Height:	3.0' above grade

ILLUMINATION SUMMARY	
MAINTAINED HORIZONTAL FOOTCANDLES	
Entire Grid	
Scan Average:	1.49
Maximum:	32
Minimum:	0
Avg / Min:	6042.26
Max / Min:	131771.45
UG (adjacent pts):	119.45
CU:	0.03
No. of Points:	247
LUMINAIRE INFORMATION	
Applied Circuits:	A, B, C, D, E
No. of Luminaires:	76
Total Load:	75.4 kW

Guaranteed Performance: The ILLUMINATION described above is guaranteed per your Musco Warranty document and includes a 0.95 dirt depreciation factor.

Field Measurements: Individual field measurements may vary from computer-calculated predictions and should be taken in accordance with IESNA RP-6-15.

Electrical System Requirements: Refer to Amperage Draw Chart and/or the "Musco Control System Summary" for electrical sizing.

Installation Requirements: Results assume ± 3% nominal voltage at line side of the driver and structures located within 3 feet (1m) of design locations.



SCALE IN FEET 1 : 200



ENGINEERED DESIGN By: H.Sabers · File #210683E · 08-Apr-22

Pole location(s) ⊕ dimensions are relative to 0,0 reference point(s) ⊗

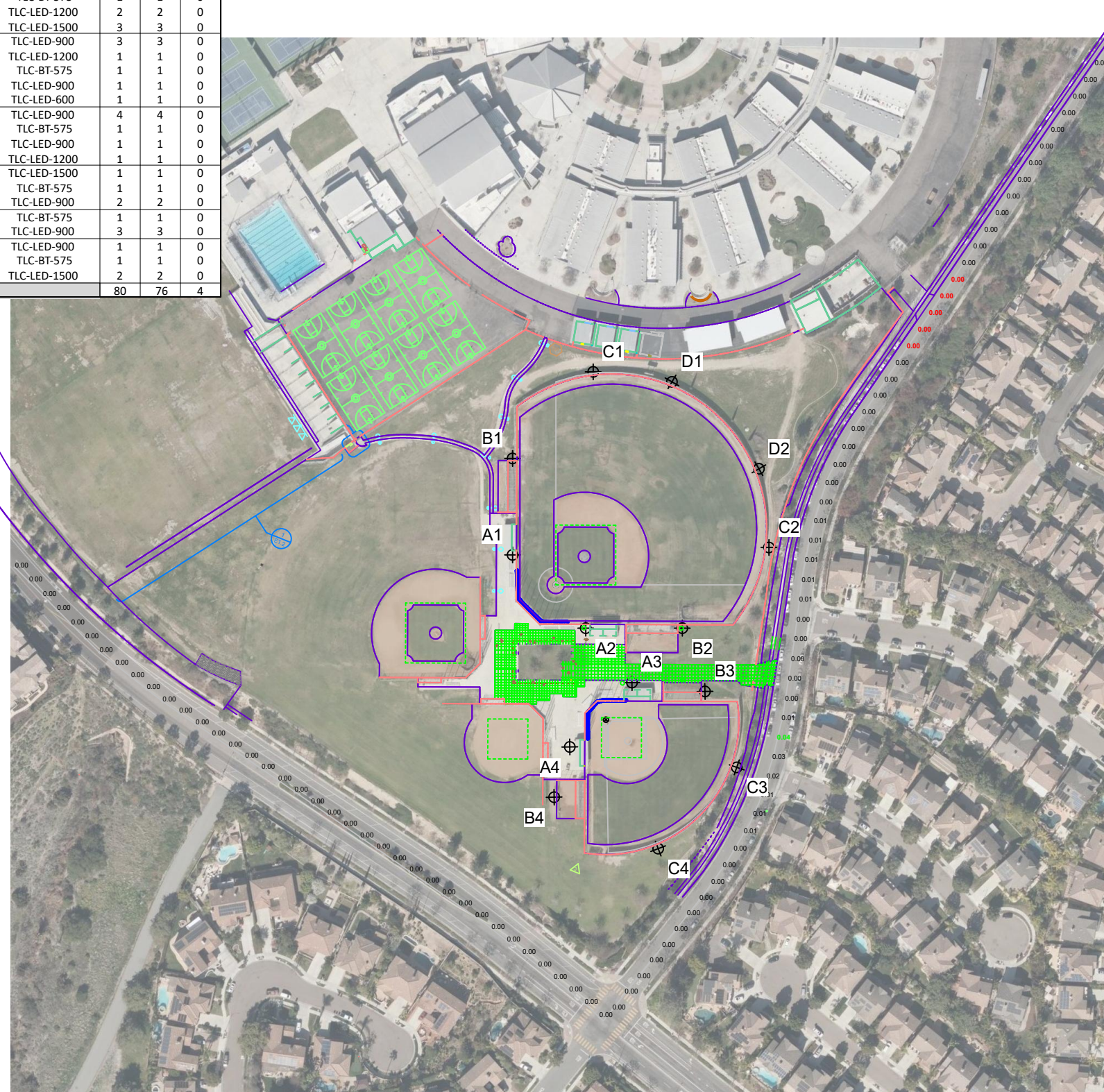


We Make It Happen.

Not to be reproduced in whole or part without the written consent of Musco Sports Lighting, LLC. ©1981, 2022 Musco Sports Lighting, LLC.

ILLUMINATION SUMMARY

EQUIPMENT LIST FOR AREAS SHOWN									
Pole			Luminaires						
QTY	LOCATION	SIZE	GRADE ELEVATION	MOUNTING HEIGHT	LUMINAIRE TYPE	QTY / POLE	THIS GRID	OTHER GRIDS	
2	A1-A2	80'	-	20'	TLC-BT-575	1	1	0	
				65'	TLC-LED-400	1	0	1	
				80'	TLC-LED-1500	4	4	0	
2	A3-A4	70'	-	20'	TLC-BT-575	1	1	0	
				65'	TLC-LED-400	1	0	1	
				70'	TLC-LED-900	3	3	0	
2	B1-B2	90'	-	90'	TLC-LED-900	4	4	0	
				20'	TLC-BT-575	1	1	0	
				80'	TLC-LED-1200	2	2	0	
				90'	TLC-LED-1500	3	3	0	
1	B3	70'	-	70'	TLC-LED-900	3	3	0	
				70'	TLC-LED-1200	1	1	0	
				20'	TLC-BT-575	1	1	0	
				60'	TLC-LED-900	1	1	0	
				70'	TLC-LED-600	1	1	0	
1	B4	70'	-	70'	TLC-LED-900	4	4	0	
				20'	TLC-BT-575	1	1	0	
				60'	TLC-LED-900	1	1	0	
				70'	TLC-LED-1200	1	1	0	
2	C1-C2	70'	-	70'	TLC-LED-1500	1	1	0	
				15.5'	TLC-BT-575	1	1	0	
				70'	TLC-LED-900	2	2	0	
2	C3-C4	60'	-	15.5'	TLC-BT-575	1	1	0	
				60'	TLC-LED-900	3	3	0	
				70'	TLC-LED-900	1	1	0	
2	D1-D2	70'	-	70'	TLC-LED-900	1	1	0	
				15.5'	TLC-BT-575	1	1	0	
				70'	TLC-LED-1500	2	2	0	
14	TOTALS					80	76	4	



GRID SUMMARY	
Name:	Road Spill
Spacing:	30.0'
Height:	3.0' above grade

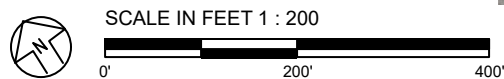
ILLUMINATION SUMMARY	
HORIZONTAL FOOTCANDLES	
Scan Average:	Entire Grid 0.0022
Maximum:	0.04
Minimum:	0.00
No. of Points:	93
LUMINAIRE INFORMATION	
Applied Circuits:	A, B, C, D, E
No. of Luminaires:	76
Total Load:	75.4 kW

Guaranteed Performance: The ILLUMINATION described above is guaranteed per your Musco Warranty document.

Field Measurements: Individual field measurements may vary from computer-calculated predictions and should be taken in accordance with IESNA RP-6-15.

Electrical System Requirements: Refer to Amperage Draw Chart and/or the "Musco Control System Summary" for electrical sizing.

Installation Requirements: Results assume ± 3% nominal voltage at line side of the driver and structures located within 3 feet (1m) of design locations.



Pole location(s) ⊕ dimensions are relative to 0,0 reference point(s) ⊗

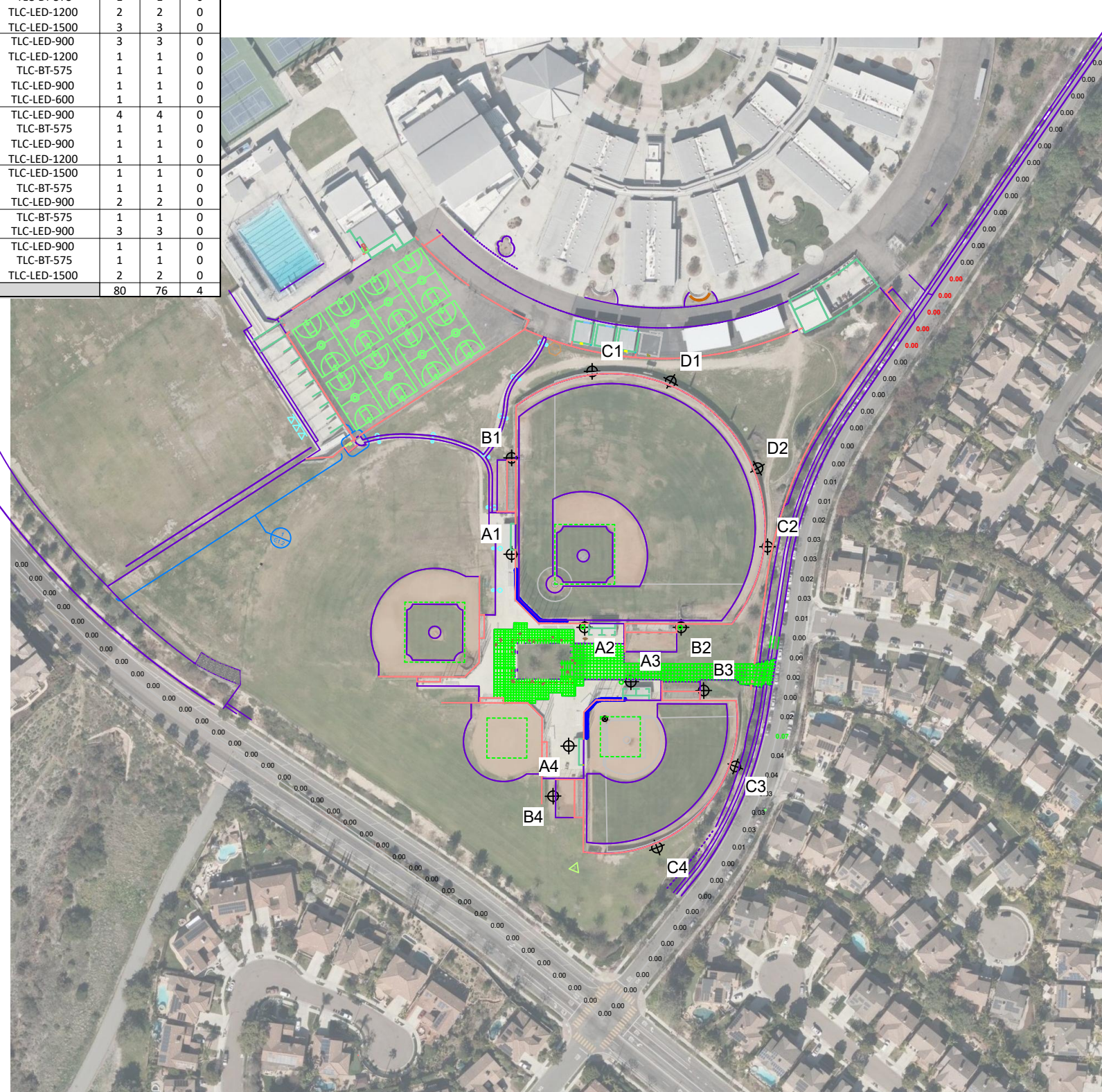


We Make It Happen.

Not to be reproduced in whole or part without the written consent of Musco Sports Lighting, LLC. ©1981, 2022 Musco Sports Lighting, LLC.

EQUIPMENT LIST FOR AREAS SHOWN

Pole		Luminaires							
QTY	LOCATION	SIZE	GRADE ELEVATION	MOUNTING HEIGHT	LUMINAIRE TYPE	QTY / POLE	THIS GRID	OTHER GRIDS	
2	A1-A2	80'	-	20'	TLC-BT-575	1	1	0	
				65'	TLC-LED-400	1	0	1	
				80'	TLC-LED-1500	4	4	0	
2	A3-A4	70'	-	20'	TLC-BT-575	1	1	0	
				65'	TLC-LED-400	1	0	1	
				70'	TLC-LED-900	3	3	0	
2	B1-B2	90'	-	90'	TLC-LED-900	4	4	0	
				20'	TLC-BT-575	1	1	0	
				80'	TLC-LED-1200	2	2	0	
				90'	TLC-LED-1500	3	3	0	
1	B3	70'	-	70'	TLC-LED-900	3	3	0	
				70'	TLC-LED-1200	1	1	0	
				20'	TLC-BT-575	1	1	0	
				60'	TLC-LED-900	1	1	0	
				70'	TLC-LED-600	1	1	0	
1	B4	70'	-	70'	TLC-LED-900	4	4	0	
				20'	TLC-BT-575	1	1	0	
				60'	TLC-LED-900	1	1	0	
				70'	TLC-LED-1200	1	1	0	
2	C1-C2	70'	-	70'	TLC-LED-1500	1	1	0	
				15.5'	TLC-BT-575	1	1	0	
				70'	TLC-LED-900	2	2	0	
2	C3-C4	60'	-	15.5'	TLC-BT-575	1	1	0	
				60'	TLC-LED-900	3	3	0	
				70'	TLC-LED-900	1	1	0	
2	D1-D2	70'	-	70'	TLC-LED-900	1	1	0	
				15.5'	TLC-BT-575	1	1	0	
				70'	TLC-LED-1500	2	2	0	
14	TOTALS						80	76	4



**Del Norte High School Baseball Softball LED
San Diego, CA**

GRID SUMMARY	
Name:	Road Spill
Spacing:	30.0'
Height:	3.0' above grade

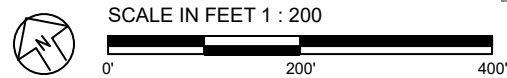
ILLUMINATION SUMMARY	
MAX VERTICAL FOOTCANDLES	
Scan Average:	Entire Grid 0.0051
Maximum:	0.07
Minimum:	0.00
No. of Points:	93
LUMINAIRE INFORMATION	
Applied Circuits:	A, B, C, D, E
No. of Luminaires:	76
Total Load:	75.4 kW

Guaranteed Performance: The ILLUMINATION described above is guaranteed per your Musco Warranty document.

Field Measurements: Individual field measurements may vary from computer-calculated predictions and should be taken in accordance with IESNA RP-6-15.

Electrical System Requirements: Refer to Amperage Draw Chart and/or the "Musco Control System Summary" for electrical sizing.

Installation Requirements: Results assume ± 3% nominal voltage at line side of the driver and structures located within 3 feet (1m) of design locations.



ENGINEERED DESIGN By: H.Sabers · File #210683E · 08-Apr-22

Pole location(s) ⊕ dimensions are relative to 0,0 reference point(s) ⊗

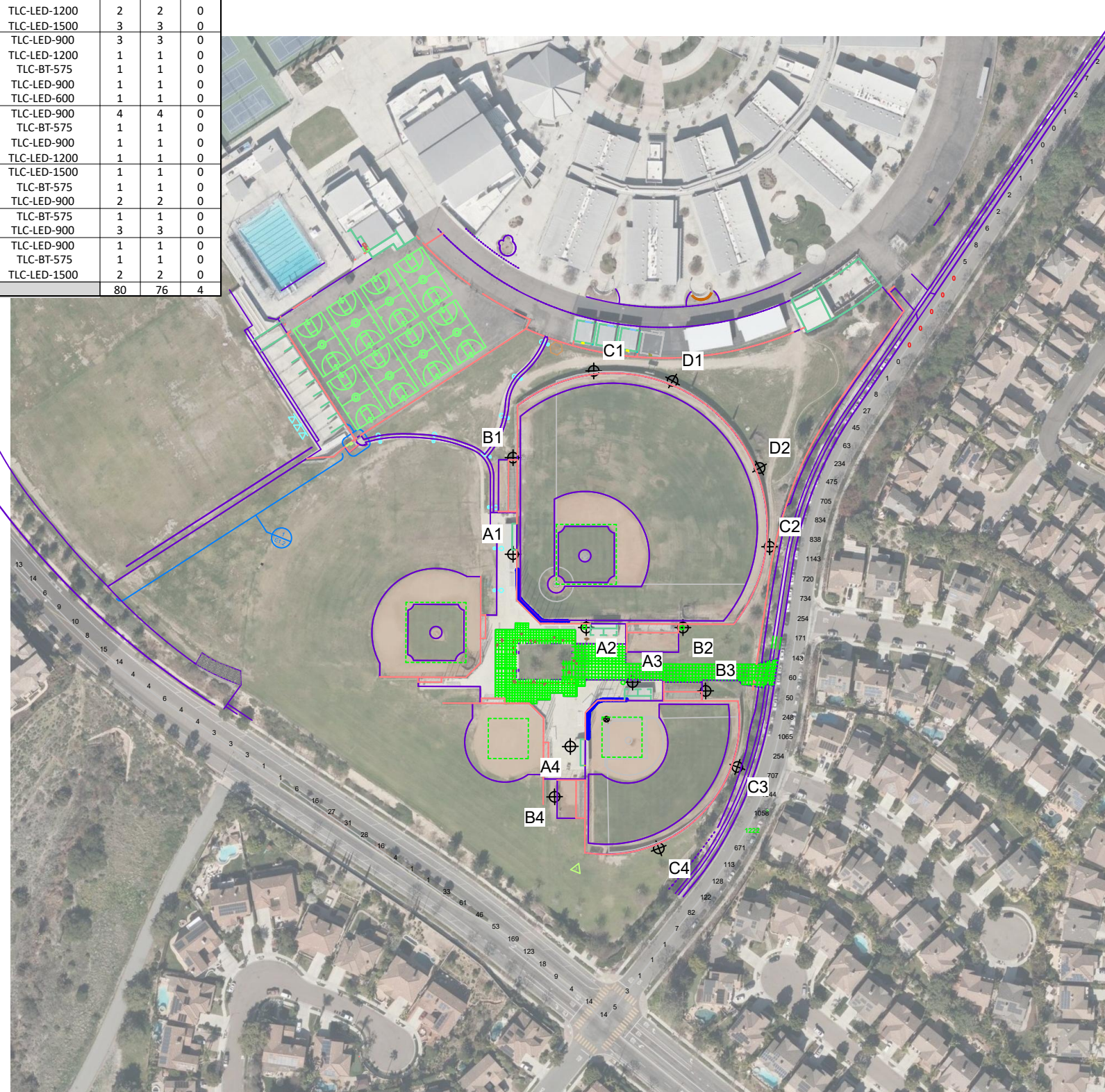


We Make It Happen.

Not to be reproduced in whole or part without the written consent of Musco Sports Lighting, LLC. ©1981, 2022 Musco Sports Lighting, LLC.

ILLUMINATION SUMMARY

EQUIPMENT LIST FOR AREAS SHOWN									
Pole			Luminaires						
QTY	LOCATION	SIZE	GRADE ELEVATION	MOUNTING HEIGHT	LUMINAIRE TYPE	QTY / POLE	THIS GRID	OTHER GRIDS	
2	A1-A2	80'	-	20'	TLC-BT-575	1	1	0	
				65'	TLC-LED-400	1	0	1	
				80'	TLC-LED-1500	4	4	0	
2	A3-A4	70'	-	20'	TLC-BT-575	1	1	0	
				65'	TLC-LED-400	1	0	1	
				70'	TLC-LED-900	3	3	0	
2	B1-B2	90'	-	90'	TLC-LED-900	4	4	0	
				20'	TLC-BT-575	1	1	0	
				80'	TLC-LED-1200	2	2	0	
				90'	TLC-LED-1500	3	3	0	
1	B3	70'	-	70'	TLC-LED-900	3	3	0	
				70'	TLC-LED-1200	1	1	0	
				20'	TLC-BT-575	1	1	0	
				60'	TLC-LED-900	1	1	0	
				70'	TLC-LED-600	1	1	0	
1	B4	70'	-	70'	TLC-LED-900	4	4	0	
				20'	TLC-BT-575	1	1	0	
				60'	TLC-LED-900	1	1	0	
				70'	TLC-LED-1200	1	1	0	
2	C1-C2	70'	-	70'	TLC-LED-1500	1	1	0	
				15.5'	TLC-BT-575	1	1	0	
				70'	TLC-LED-900	2	2	0	
2	C3-C4	60'	-	15.5'	TLC-BT-575	1	1	0	
				60'	TLC-LED-900	3	3	0	
				70'	TLC-LED-900	1	1	0	
2	D1-D2	70'	-	70'	TLC-LED-900	1	1	0	
				15.5'	TLC-BT-575	1	1	0	
				70'	TLC-LED-1500	2	2	0	
14	TOTALS					80	76	4	



GRID SUMMARY	
Name:	Road Spill
Spacing:	30.0'
Height:	3.0' above grade

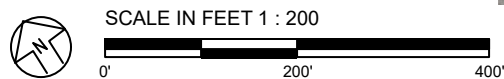
ILLUMINATION SUMMARY	
CANDELA (PER FIXTURE)	
Scan Average:	Entire Grid 151.3077
Maximum:	1221.96
Minimum:	0.00
No. of Points:	93
LUMINAIRE INFORMATION	
Applied Circuits:	A, B, C, D, E
No. of Luminaires:	76
Total Load:	75.4 kW

Guaranteed Performance: The ILLUMINATION described above is guaranteed per your Musco Warranty document.

Field Measurements: Individual field measurements may vary from computer-calculated predictions and should be taken in accordance with IESNA RP-6-15.

Electrical System Requirements: Refer to Amperage Draw Chart and/or the "Musco Control System Summary" for electrical sizing.

Installation Requirements: Results assume ± 3% nominal voltage at line side of the driver and structures located within 3 feet (1m) of design locations.



Pole location(s) ⊕ dimensions are relative to 0,0 reference point(s) ⊗



We Make It Happen.

Not to be reproduced in whole or part without the written consent of Musco Sports Lighting, LLC. ©1981, 2022 Musco Sports Lighting, LLC.

EQUIPMENT LIST FOR AREAS SHOWN

Pole		Luminaires							
QTY	LOCATION	SIZE	GRADE ELEVATION	MOUNTING HEIGHT	LUMINAIRE TYPE	QTY / POLE	THIS GRID	OTHER GRIDS	
2	A1-A2	80'	-	20'	TLC-BT-575	1	1	0	
				65'	TLC-LED-400	1	0	1	
				80'	TLC-LED-1500	4	4	0	
2	A3-A4	70'	-	20'	TLC-BT-575	1	1	0	
				65'	TLC-LED-400	1	0	1	
				70'	TLC-LED-900	3	3	0	
2	B1-B2	90'	-	90'	TLC-LED-900	4	4	0	
				20'	TLC-BT-575	1	1	0	
				80'	TLC-LED-1200	2	2	0	
				90'	TLC-LED-1500	3	3	0	
1	B3	70'	-	70'	TLC-LED-900	3	3	0	
				70'	TLC-LED-1200	1	1	0	
				20'	TLC-BT-575	1	1	0	
				60'	TLC-LED-900	1	1	0	
1	B4	70'	-	70'	TLC-LED-900	4	4	0	
				20'	TLC-BT-575	1	1	0	
				60'	TLC-LED-900	1	1	0	
				70'	TLC-LED-1200	1	1	0	
2	C1-C2	70'	-	70'	TLC-LED-1500	1	1	0	
				15.5'	TLC-BT-575	1	1	0	
				70'	TLC-LED-900	2	2	0	
2	C3-C4	60'	-	15.5'	TLC-BT-575	1	1	0	
				60'	TLC-LED-900	3	3	0	
				70'	TLC-LED-900	1	1	0	
2	D1-D2	70'	-	70'	TLC-LED-900	1	1	0	
				15.5'	TLC-BT-575	1	1	0	
				70'	TLC-LED-1500	2	2	0	
14	TOTALS						80	76	4



**Del Norte High School Baseball Softball LED
San Diego, CA**

GRID SUMMARY	
Name:	Far Sidewalk Spill
Spacing:	30.0'
Height:	3.0' above grade

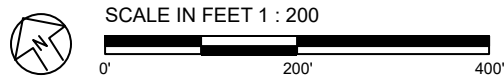
ILLUMINATION SUMMARY	
HORIZONTAL FOOTCANDLES	
Scan Average:	Entire Grid 0.0003
Maximum:	0.00
Minimum:	0.00
No. of Points:	67
LUMINAIRE INFORMATION	
Applied Circuits:	A, B, C, D, E
No. of Luminaires:	76
Total Load:	75.4 kW

Guaranteed Performance: The ILLUMINATION described above is guaranteed per your Musco Warranty document.

Field Measurements: Individual field measurements may vary from computer-calculated predictions and should be taken in accordance with IESNA RP-6-15.

Electrical System Requirements: Refer to Amperage Draw Chart and/or the "Musco Control System Summary" for electrical sizing.

Installation Requirements: Results assume ± 3% nominal voltage at line side of the driver and structures located within 3 feet (1m) of design locations.



ENGINEERED DESIGN By: H.Sabers · File #210683E · 08-Apr-22

Pole location(s) ⊕ dimensions are relative to 0,0 reference point(s) ⊗

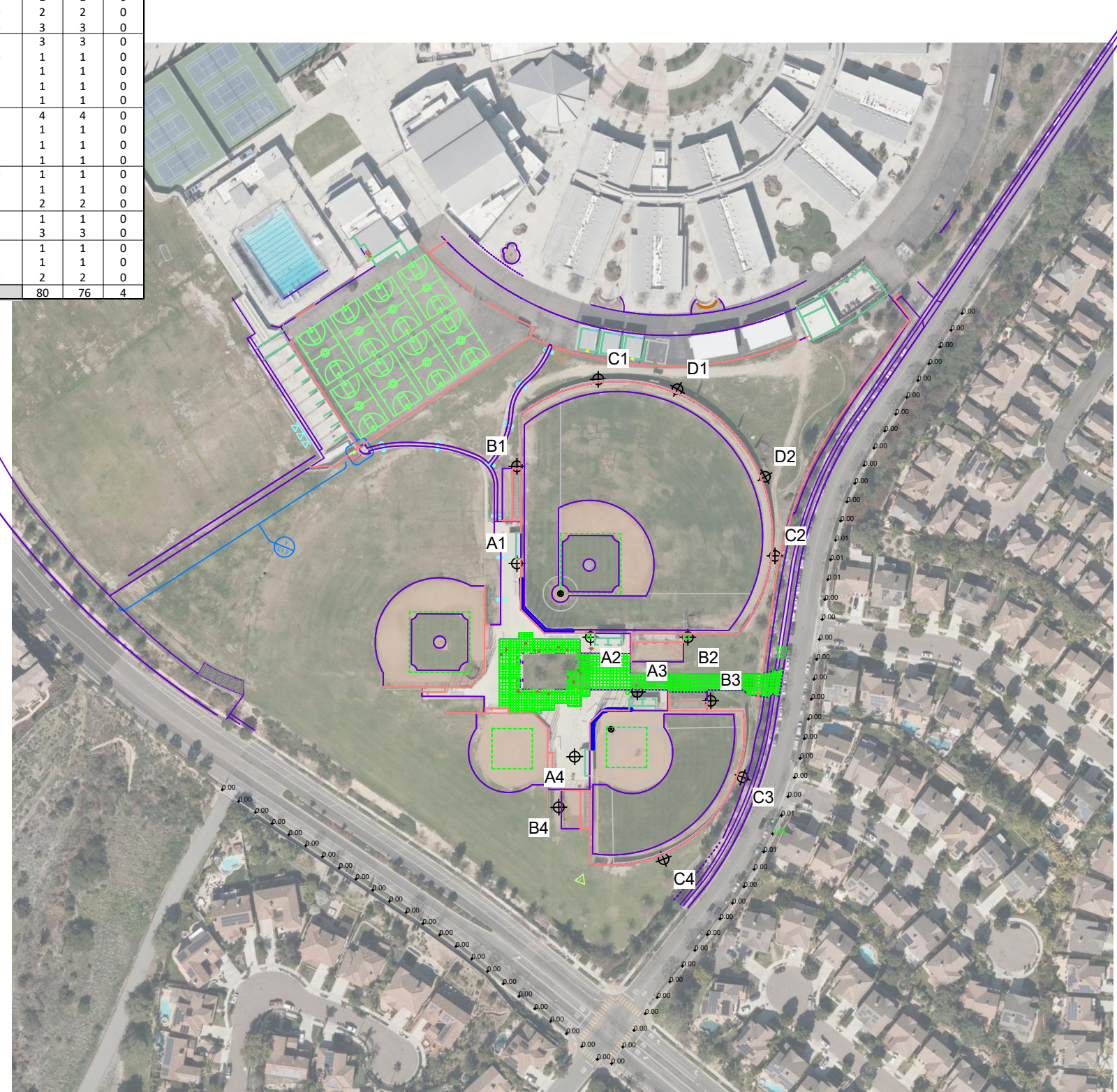


We Make It Happen.

Not to be reproduced in whole or part without the written consent of Musco Sports Lighting, LLC. ©1981, 2022 Musco Sports Lighting, LLC.

ILLUMINATION SUMMARY

EQUIPMENT LIST FOR AREAS SHOWN								
Pole			Luminaires					
QTY	LOCATION	SIZE	GRADE ELEVATION	MOUNTING HEIGHT	LUMINAIRE TYPE	QTY / POLE	THIS GRID	OTHER GRIDS
2	A1-A2	80'	-	20'	TLC-BT-575	1	1	0
				65'	TLC-LED-400	1	0	1
				80'	TLC-LED-1500	4	4	0
2	A3-A4	70'	-	20'	TLC-BT-575	1	1	0
				65'	TLC-LED-400	1	0	1
				70'	TLC-LED-900	3	3	0
2	B1-B2	90'	-	90'	TLC-LED-900	4	4	0
				20'	TLC-BT-575	1	1	0
				80'	TLC-LED-1200	2	2	0
				90'	TLC-LED-1500	3	3	0
1	B3	70'	-	70'	TLC-LED-900	3	3	0
				70'	TLC-LED-1200	1	1	0
				20'	TLC-BT-575	1	1	0
				60'	TLC-LED-900	1	1	0
1	B4	70'	-	70'	TLC-LED-900	4	4	0
				20'	TLC-BT-575	1	1	0
				60'	TLC-LED-900	1	1	0
				70'	TLC-LED-1200	1	1	0
2	C1-C2	70'	-	70'	TLC-LED-1500	1	1	0
				15.5'	TLC-BT-575	1	1	0
				70'	TLC-LED-900	2	2	0
2	C3-C4	60'	-	15.5'	TLC-BT-575	1	1	0
				60'	TLC-LED-900	3	3	0
				70'	TLC-LED-900	1	1	0
2	D1-D2	70'	-	70'	TLC-LED-900	1	1	0
				15.5'	TLC-BT-575	1	1	0
				70'	TLC-LED-1500	2	2	0
14	TOTALS					80	76	4



GRID SUMMARY	
Name:	Far Sidewalk Spill
Spacing:	30.0'
Height:	3.0' above grade

ILLUMINATION SUMMARY	
MAX VERTICAL FOOTCANDLES	
Scan Average:	Entire Grid 0.0011
Maximum:	0.01
Minimum:	0.00
No. of Points:	67
LUMINAIRE INFORMATION	
Applied Circuits:	A, B, C, D, E
No. of Luminaires:	76
Total Load:	75.4 kW

Guaranteed Performance: The ILLUMINATION described above is guaranteed per your Musco Warranty document.

Field Measurements: Individual field measurements may vary from computer-calculated predictions and should be taken in accordance with IESNA RP-6-15.

Electrical System Requirements: Refer to Amperage Draw Chart and/or the "Musco Control System Summary" for electrical sizing.

Installation Requirements: Results assume ± 3% nominal voltage at line side of the driver and structures located within 3 feet (1m) of design locations.



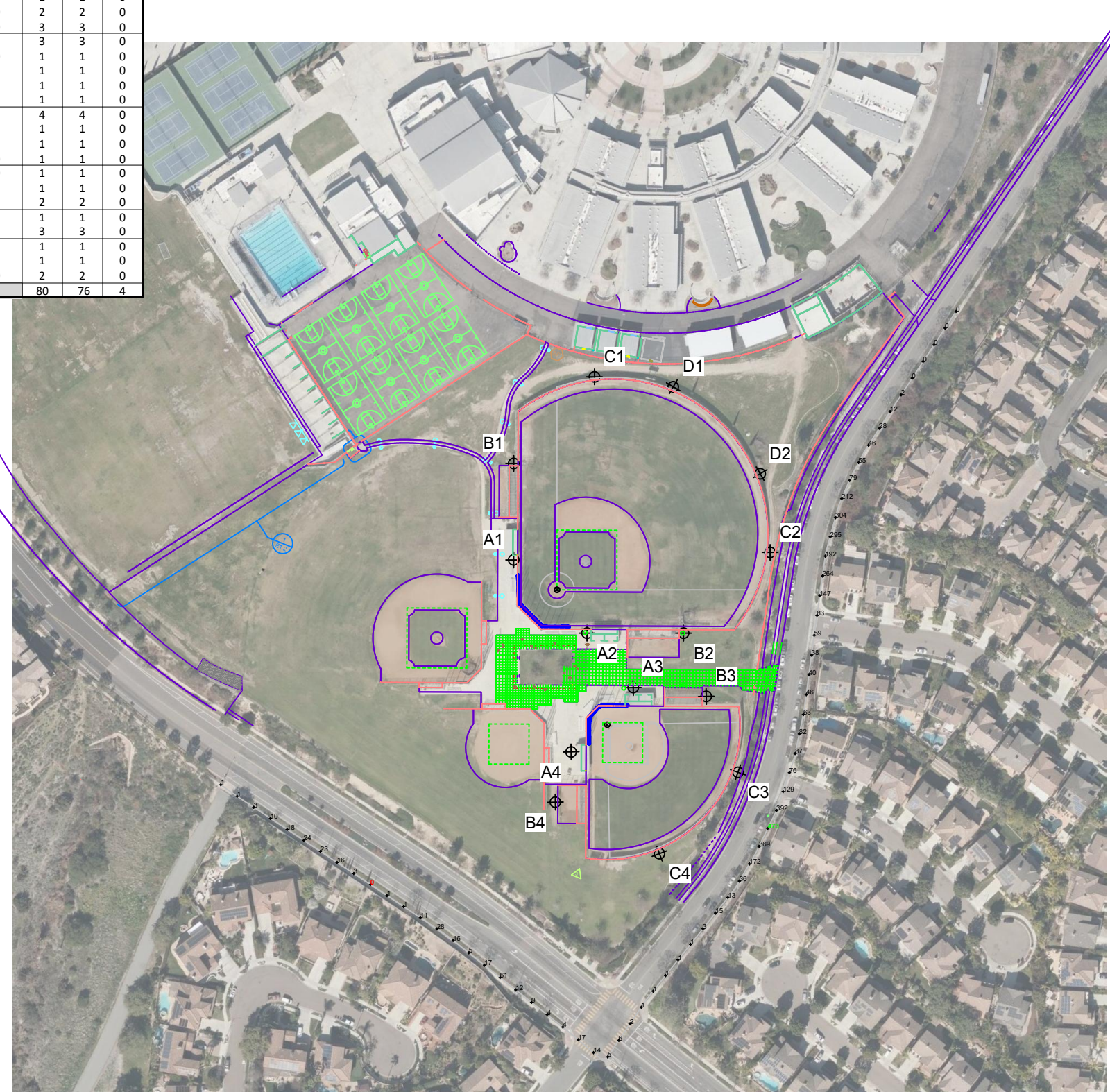
ENGINEERED DESIGN By: H.Sabers · File #210683E · 08-Apr-22

Pole location(s) ⊕ dimensions are relative to 0,0 reference point(s) ⊗



Not to be reproduced in whole or part without the written consent of Musco Sports Lighting, LLC. ©1981, 2022 Musco Sports Lighting, LLC.

EQUIPMENT LIST FOR AREAS SHOWN									
Pole			Luminaires						
QTY	LOCATION	SIZE	GRADE ELEVATION	MOUNTING HEIGHT	LUMINAIRE TYPE	QTY / POLE	THIS GRID	OTHER GRIDS	
2	A1-A2	80'	-	20'	TLC-BT-575	1	1	0	
				65'	TLC-LED-400	1	0	1	
				80'	TLC-LED-1500	4	4	0	
2	A3-A4	70'	-	20'	TLC-BT-575	1	1	0	
				65'	TLC-LED-400	1	0	1	
				70'	TLC-LED-900	3	3	0	
2	B1-B2	90'	-	90'	TLC-LED-900	4	4	0	
				20'	TLC-BT-575	1	1	0	
				80'	TLC-LED-1200	2	2	0	
				90'	TLC-LED-1500	3	3	0	
1	B3	70'	-	70'	TLC-LED-900	3	3	0	
				70'	TLC-LED-1200	1	1	0	
				20'	TLC-BT-575	1	1	0	
				60'	TLC-LED-900	1	1	0	
				70'	TLC-LED-600	1	1	0	
1	B4	70'	-	70'	TLC-LED-900	4	4	0	
				20'	TLC-BT-575	1	1	0	
				60'	TLC-LED-900	1	1	0	
				70'	TLC-LED-1200	1	1	0	
2	C1-C2	70'	-	70'	TLC-LED-1500	1	1	0	
				15.5'	TLC-BT-575	1	1	0	
				70'	TLC-LED-900	2	2	0	
2	C3-C4	60'	-	15.5'	TLC-BT-575	1	1	0	
				60'	TLC-LED-900	3	3	0	
				70'	TLC-LED-900	1	1	0	
2	D1-D2	70'	-	70'	TLC-LED-900	1	1	0	
				15.5'	TLC-BT-575	1	1	0	
				70'	TLC-LED-1500	2	2	0	
14	TOTALS					80	76	4	



GRID SUMMARY	
Name:	Far Sidewalk Spill
Spacing:	30.0'
Height:	3.0' above grade

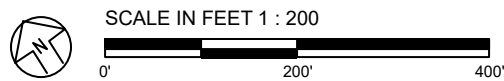
ILLUMINATION SUMMARY	
CANDELA (PER FIXTURE)	
Scan Average:	Entire Grid 61.6575
Maximum:	473.42
Minimum:	0.01
No. of Points:	67
LUMINAIRE INFORMATION	
Applied Circuits:	A, B, C, D, E
No. of Luminaires:	76
Total Load:	75.4 kW

Guaranteed Performance: The ILLUMINATION described above is guaranteed per your Musco Warranty document.

Field Measurements: Individual field measurements may vary from computer-calculated predictions and should be taken in accordance with IESNA RP-6-15.

Electrical System Requirements: Refer to Amperage Draw Chart and/or the "Musco Control System Summary" for electrical sizing.

Installation Requirements: Results assume ± 3% nominal voltage at line side of the driver and structures located within 3 feet (1m) of design locations.



ENGINEERED DESIGN By: H.Sabers · File #210683E · 08-Apr-22

Pole location(s) ⊕ dimensions are relative to 0,0 reference point(s) ⊗

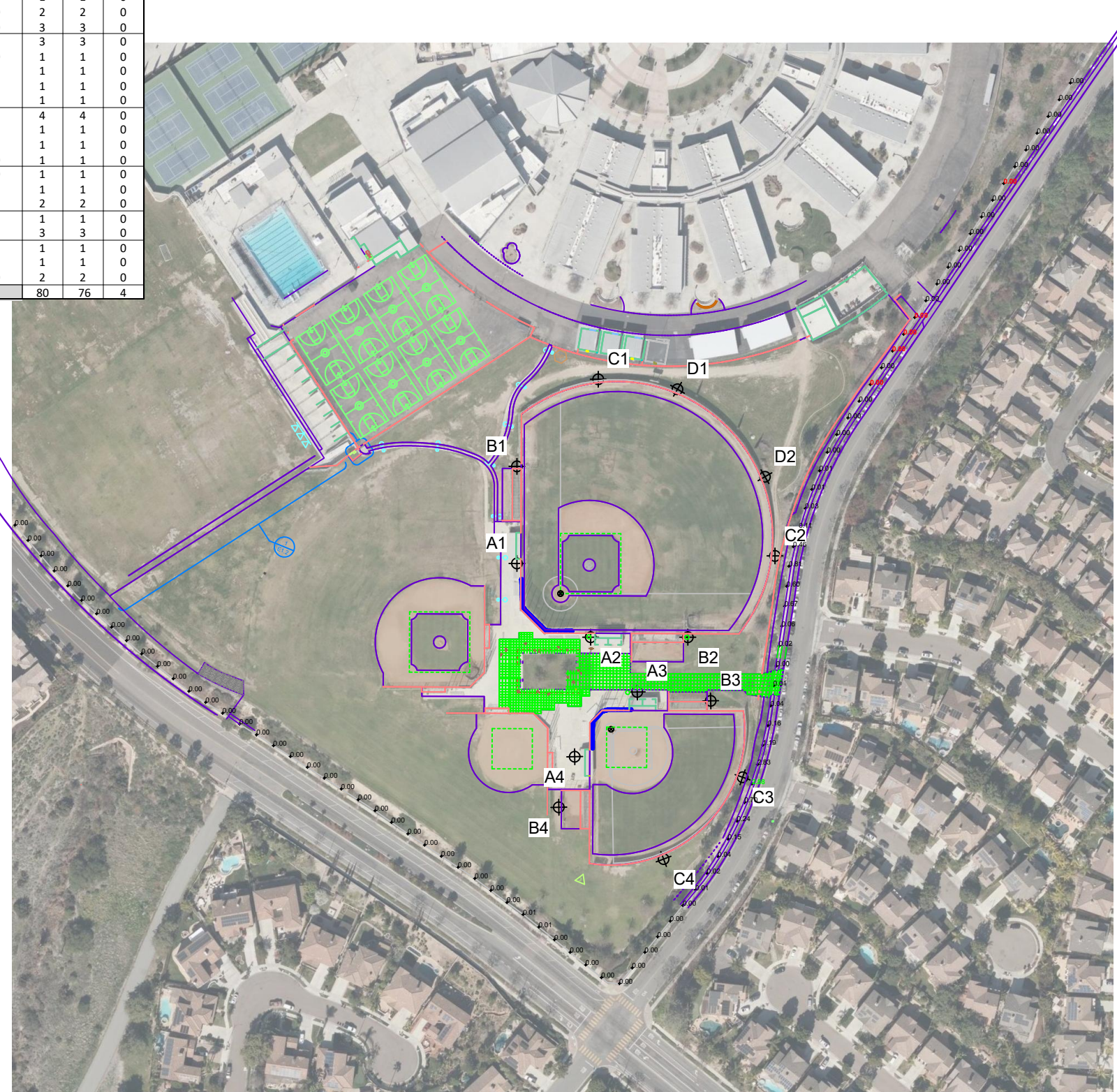


We Make It Happen.

Not to be reproduced in whole or part without the written consent of Musco Sports Lighting, LLC. ©1981, 2022 Musco Sports Lighting, LLC.

ILLUMINATION SUMMARY

EQUIPMENT LIST FOR AREAS SHOWN								
Pole			Luminaires					
QTY	LOCATION	SIZE	GRADE ELEVATION	MOUNTING HEIGHT	LUMINAIRE TYPE	QTY / POLE	THIS GRID	OTHER GRIDS
2	A1-A2	80'	-	20'	TLC-BT-575	1	1	0
				65'	TLC-LED-400	1	0	1
				80'	TLC-LED-1500	4	4	0
2	A3-A4	70'	-	20'	TLC-BT-575	1	1	0
				65'	TLC-LED-400	1	0	1
				70'	TLC-LED-900	3	3	0
2	B1-B2	90'	-	90'	TLC-LED-900	4	4	0
				20'	TLC-BT-575	1	1	0
				80'	TLC-LED-1200	2	2	0
				90'	TLC-LED-1500	3	3	0
1	B3	70'	-	70'	TLC-LED-900	3	3	0
				70'	TLC-LED-1200	1	1	0
				20'	TLC-BT-575	1	1	0
				60'	TLC-LED-900	1	1	0
				70'	TLC-LED-600	1	1	0
1	B4	70'	-	70'	TLC-LED-900	4	4	0
				20'	TLC-BT-575	1	1	0
				60'	TLC-LED-900	1	1	0
				70'	TLC-LED-1200	1	1	0
2	C1-C2	70'	-	70'	TLC-LED-1500	1	1	0
				15.5'	TLC-BT-575	1	1	0
2	C3-C4	60'	-	15.5'	TLC-BT-575	1	1	0
				60'	TLC-LED-900	3	3	0
2	D1-D2	70'	-	70'	TLC-LED-900	1	1	0
				15.5'	TLC-BT-575	1	1	0
				70'	TLC-LED-1500	2	2	0
14	TOTALS					80	76	4



GRID SUMMARY	
Name:	Near Sidewalk Spill
Spacing:	30.0'
Height:	3.0' above grade

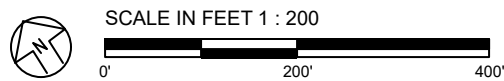
ILLUMINATION SUMMARY	
HORIZONTAL FOOTCANDLES	
Scan Average:	Entire Grid 0.1231
Maximum:	2.88
Minimum:	0.00
No. of Points:	90
LUMINAIRE INFORMATION	
Applied Circuits:	A, B, C, D, E
No. of Luminaires:	76
Total Load:	75.4 kW

Guaranteed Performance: The ILLUMINATION described above is guaranteed per your Musco Warranty document.

Field Measurements: Individual field measurements may vary from computer-calculated predictions and should be taken in accordance with IESNA RP-6-15.

Electrical System Requirements: Refer to Amperage Draw Chart and/or the "Musco Control System Summary" for electrical sizing.

Installation Requirements: Results assume ± 3% nominal voltage at line side of the driver and structures located within 3 feet (1m) of design locations.

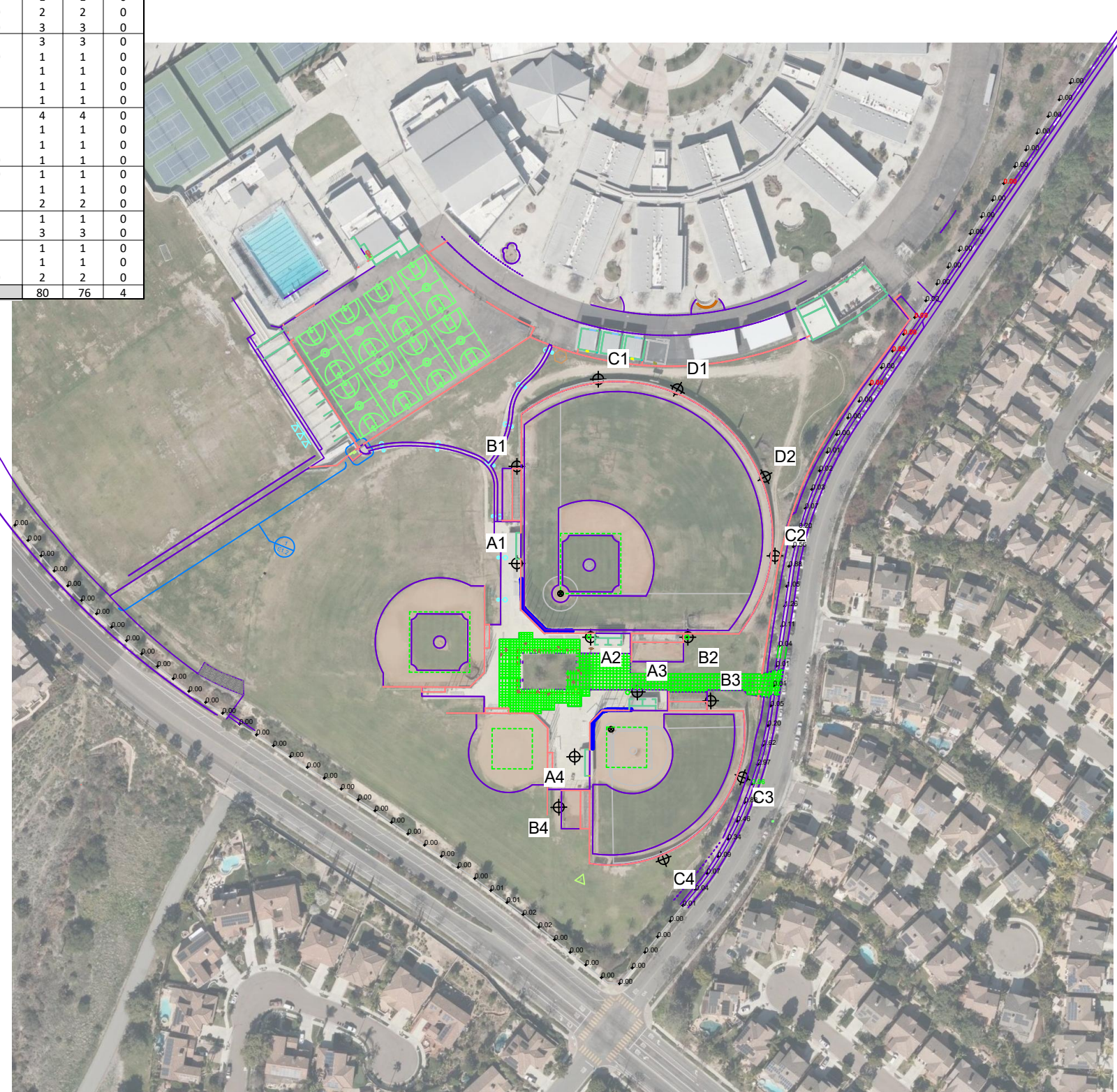


Pole location(s) ⊕ dimensions are relative to 0,0 reference point(s) ⊗



We Make It Happen.

EQUIPMENT LIST FOR AREAS SHOWN								
Pole			Luminaires					
QTY	LOCATION	SIZE	GRADE ELEVATION	MOUNTING HEIGHT	LUMINAIRE TYPE	QTY / POLE	THIS GRID	OTHER GRIDS
2	A1-A2	80'	-	20'	TLC-BT-575	1	1	0
				65'	TLC-LED-400	1	0	1
				80'	TLC-LED-1500	4	4	0
2	A3-A4	70'	-	20'	TLC-BT-575	1	1	0
				65'	TLC-LED-400	1	0	1
				70'	TLC-LED-900	3	3	0
2	B1-B2	90'	-	90'	TLC-LED-900	4	4	0
				20'	TLC-BT-575	1	1	0
				80'	TLC-LED-1200	2	2	0
				90'	TLC-LED-1500	3	3	0
1	B3	70'	-	70'	TLC-LED-900	3	3	0
				70'	TLC-LED-1200	1	1	0
				20'	TLC-BT-575	1	1	0
				60'	TLC-LED-900	1	1	0
				70'	TLC-LED-600	1	1	0
1	B4	70'	-	70'	TLC-LED-900	4	4	0
				20'	TLC-BT-575	1	1	0
				60'	TLC-LED-900	1	1	0
				70'	TLC-LED-1200	1	1	0
2	C1-C2	70'	-	70'	TLC-LED-1500	1	1	0
				15.5'	TLC-BT-575	1	1	0
2	C3-C4	60'	-	15.5'	TLC-BT-575	1	1	0
				60'	TLC-LED-900	3	3	0
2	D1-D2	70'	-	70'	TLC-LED-900	1	1	0
				15.5'	TLC-BT-575	1	1	0
				70'	TLC-LED-1500	2	2	0
14	TOTALS					80	76	4



GRID SUMMARY	
Name:	Near Sidewalk Spill
Spacing:	30.0'
Height:	3.0' above grade

ILLUMINATION SUMMARY	
MAX VERTICAL FOOTCANDLES	
Scan Average:	Entire Grid 0.1568
Maximum:	3.06
Minimum:	0.00
No. of Points:	90
LUMINAIRE INFORMATION	
Applied Circuits:	A, B, C, D, E
No. of Luminaires:	76
Total Load:	75.4 kW

Guaranteed Performance: The ILLUMINATION described above is guaranteed per your Musco Warranty document.

Field Measurements: Individual field measurements may vary from computer-calculated predictions and should be taken in accordance with IESNA RP-6-15.

Electrical System Requirements: Refer to Amperage Draw Chart and/or the "Musco Control System Summary" for electrical sizing.

Installation Requirements: Results assume ± 3% nominal voltage at line side of the driver and structures located within 3 feet (1m) of design locations.



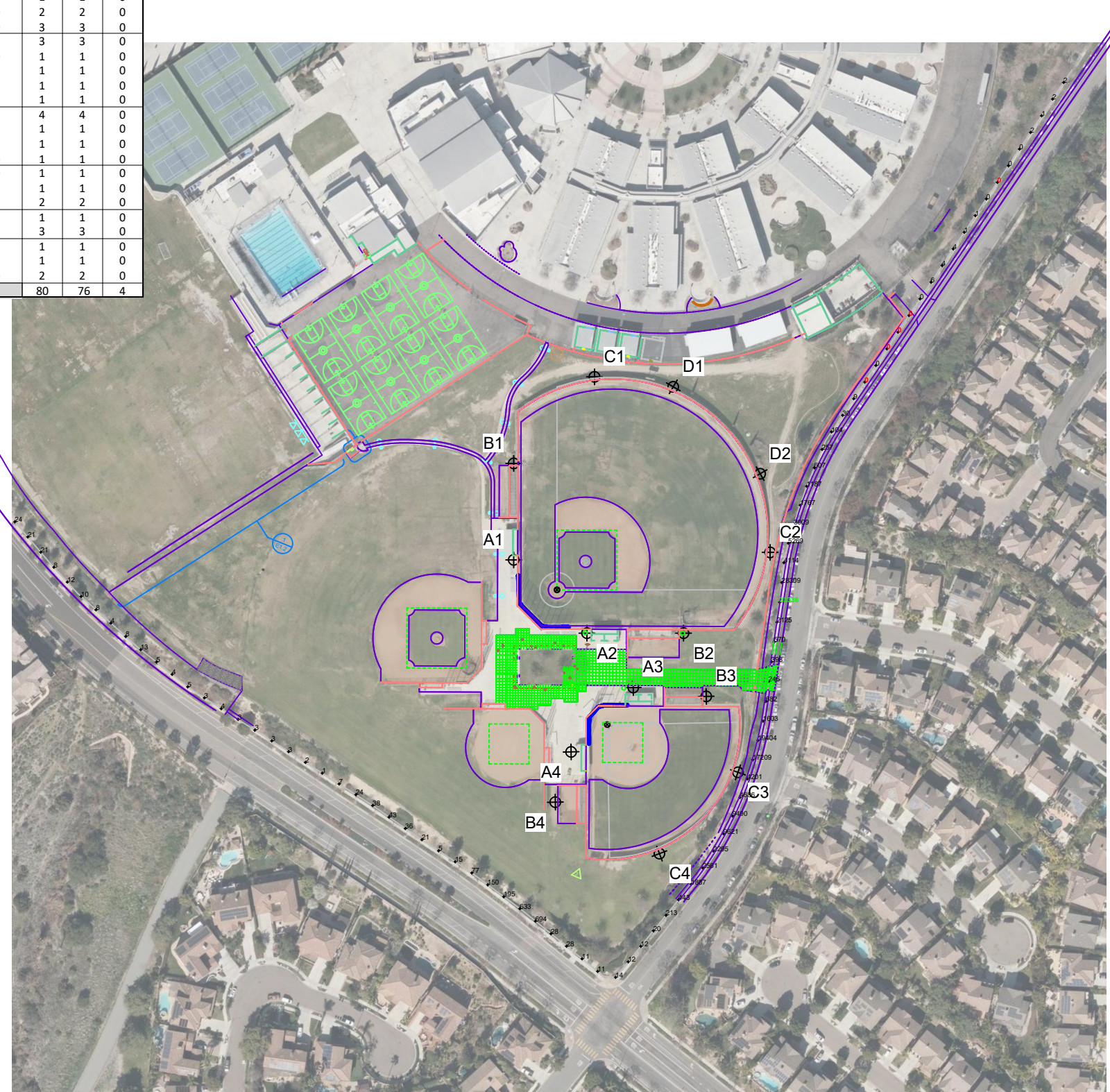
ENGINEERED DESIGN By: H.Sabers · File #210683E · 08-Apr-22

Pole location(s) ⊕ dimensions are relative to 0,0 reference point(s) ⊗



Not to be reproduced in whole or part without the written consent of Musco Sports Lighting, LLC. ©1981, 2022 Musco Sports Lighting, LLC.

EQUIPMENT LIST FOR AREAS SHOWN								
Pole			Luminaires					
QTY	LOCATION	SIZE	GRADE ELEVATION	MOUNTING HEIGHT	LUMINAIRE TYPE	QTY / POLE	THIS GRID	OTHER GRIDS
2	A1-A2	80'	-	20'	TLC-BT-575	1	1	0
				65'	TLC-LED-400	1	0	1
				80'	TLC-LED-1500	4	4	0
2	A3-A4	70'	-	20'	TLC-BT-575	1	1	0
				65'	TLC-LED-400	1	0	1
				70'	TLC-LED-900	3	3	0
2	B1-B2	90'	-	90'	TLC-LED-900	4	4	0
				20'	TLC-BT-575	1	1	0
				80'	TLC-LED-1200	2	2	0
				90'	TLC-LED-1500	3	3	0
1	B3	70'	-	70'	TLC-LED-900	3	3	0
				70'	TLC-LED-1200	1	1	0
				20'	TLC-BT-575	1	1	0
				60'	TLC-LED-900	1	1	0
				70'	TLC-LED-600	1	1	0
1	B4	70'	-	70'	TLC-LED-900	4	4	0
				20'	TLC-BT-575	1	1	0
				60'	TLC-LED-900	1	1	0
				70'	TLC-LED-1200	1	1	0
2	C1-C2	70'	-	70'	TLC-LED-1500	1	1	0
				15.5'	TLC-BT-575	1	1	0
2	C3-C4	60'	-	15.5'	TLC-BT-575	1	1	0
				60'	TLC-LED-900	3	3	0
2	D1-D2	70'	-	70'	TLC-LED-900	1	1	0
				15.5'	TLC-BT-575	1	1	0
				70'	TLC-LED-1500	2	2	0
14	TOTALS					80	76	4



GRID SUMMARY	
Name:	Near Sidewalk Spill
Spacing:	30.0'
Height:	3.0' above grade

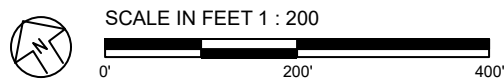
ILLUMINATION SUMMARY	
CANDELA (PER FIXTURE)	
Scan Average:	Entire Grid 1754.3784
Maximum:	33335.95
Minimum:	0.00
No. of Points:	90
LUMINAIRE INFORMATION	
Applied Circuits:	A, B, C, D, E
No. of Luminaires:	76
Total Load:	75.4 kW

Guaranteed Performance: The ILLUMINATION described above is guaranteed per your Musco Warranty document.

Field Measurements: Individual field measurements may vary from computer-calculated predictions and should be taken in accordance with IESNA RP-6-15.

Electrical System Requirements: Refer to Amperage Draw Chart and/or the "Musco Control System Summary" for electrical sizing.

Installation Requirements: Results assume ± 3% nominal voltage at line side of the driver and structures located within 3 feet (1m) of design locations.



ENGINEERED DESIGN By: H.Sabers · File #210683E · 08-Apr-22

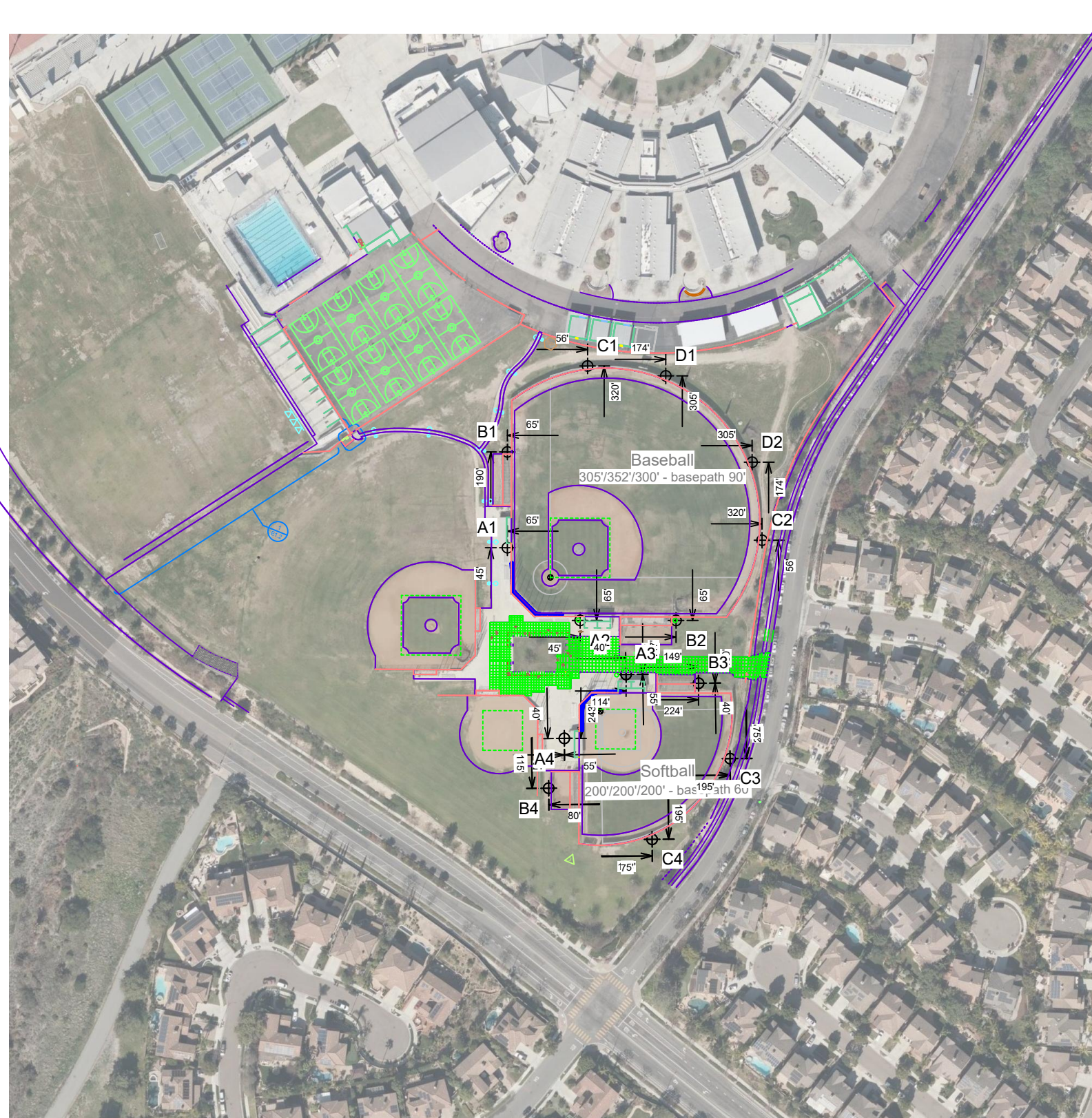
Pole location(s) ⊕ dimensions are relative to 0,0 reference point(s) ⊗



We Make It Happen.

Not to be reproduced in whole or part without the written consent of Musco Sports Lighting, LLC. ©1981, 2022 Musco Sports Lighting, LLC.

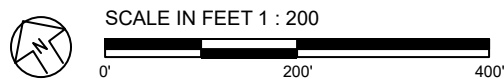
ILLUMINATION SUMMARY



EQUIPMENT LAYOUT	
INCLUDES:	
· Baseball	
· Softball	
Electrical System Requirements: Refer to Amperage Draw Chart and/or the "Musco Control System Summary" for electrical sizing.	
Installation Requirements: Results assume ± 3% nominal voltage at line side of the driver and structures located within 3 feet (1m) of design locations.	

EQUIPMENT LIST FOR AREAS SHOWN						
QTY	LOCATION	Pole		Luminaires		
		SIZE	GRADE ELEVATION	MOUNTING HEIGHT	LUMINAIRE TYPE	QTY / POLE
2	A1-A2	80'	-	20'	TLC-BT-575	1
				65'	TLC-LED-400	1
				80'	TLC-LED-1500	4
2	A3-A4	70'	-	20'	TLC-BT-575	1
				65'	TLC-LED-400	1
				70'	TLC-LED-900	3
2	B1-B2	90'	-	90'	TLC-LED-900	4
				20'	TLC-BT-575	1
				80'	TLC-LED-1200	2
				90'	TLC-LED-1500	3
1	B3	70'	-	70'	TLC-LED-900	3
				70'	TLC-LED-1200	1
				20'	TLC-BT-575	1
				60'	TLC-LED-900	1
				70'	TLC-LED-600	1
1	B4	70'	-	70'	TLC-LED-900	4
				20'	TLC-BT-575	1
				60'	TLC-LED-900	1
				70'	TLC-LED-1200	1
2	C1-C2	70'	-	70'	TLC-LED-1500	1
				15.5'	TLC-BT-575	1
2	C3-C4	60'	-	70'	TLC-LED-900	2
				15.5'	TLC-BT-575	1
2	D1-D2	70'	-	70'	TLC-LED-900	3
				15.5'	TLC-BT-575	1
				70'	TLC-LED-1500	2
14	TOTALS					80

SINGLE LUMINAIRE AMPERAGE DRAW CHART						
Ballast Specifications (.90 min power factor)	Line Amperage Per Luminaire (max draw)					
	208 (60)	220 (60)	240 (60)	277 (60)	347 (60)	480 (60)
Single Phase Voltage	208 (60)	220 (60)	240 (60)	277 (60)	347 (60)	480 (60)
TLC-LED-600	3.4	3.2	3.0	2.6	2.0	1.9
TLC-LED-1500	8.5	8.1	7.4	6.4	5.1	4.7
TLC-LED-900	5.3	5.0	4.6	4.0	3.2	2.9
TLC-LED-1200	7.0	6.6	6.1	5.2	4.2	4.0
TLC-BT-575	3.4	3.2	2.9	2.5	2.0	1.8
TLC-LED-400	2.3	2.2	2.0	1.7	1.4	1.3



Pole location(s) ⊕ dimensions are relative to 0,0 reference point(s) ⊗



We Make It Happen.

Not to be reproduced in whole or part without the written consent of Musco Sports Lighting, LLC. ©1981, 2022 Musco Sports Lighting, LLC.