

Appendix C

Arborist Report and Tree Mitigation Memorandum



Updated Arborist Report

**681 East Trimble Road and adjacent vacant lot
San Jose, CA 95131**

**PREPARED FOR
The Hanover Company
156 Diablo Road, Suite 220
Danville, CA 94526**

**PREPARED BY:
HortScience | Bartlett Consulting
325 Ray Street
Pleasanton, CA 94566**

October 29, 2021

Arborist Report
681 East Trimble Road and adjacent vacant lot
San Jose, CA 95131

Table of Contents

	Page
Executive Summary	1
Introduction and Overview	2
Tree Assessment Methods	2
Description of Trees	3
Suitability for Preservation	7
General Tree Preservation Guidelines	8

List of Tables

Table 1. Tree condition and frequency of occurrence, Site #1	3
Table 1. Tree condition and frequency of occurrence, Site #2	7
Table 3. Tree suitability for preservation, Site #1	10
Table 4. Tree suitability for preservation, Site #2	10

Exhibits

Tree Assessment Forms

Tree Assessment Maps

Tree Disposition and Mitigation Forms

**Arborist Report
681 East Trimble Road and adjacent vacant lot
San Jose, CA 95131**

Executive Summary

The Hanover Company is in due diligence on a project involving the development of the subject properties in San Jose, CA. The 681 East Trimble Road site consisted of a farm with orchards, sheds, barns, dirt access roads, and a vacant house. The vacant lot was west of 681 East Trimble Road and contained volunteer vegetation and a row of screening vegetation along its western perimeter. HortScience | Bartlett Consulting, divisions of The F.A. Bartlett Tree Expert Company, was asked to prepare an **Arborist Report** for the proposed project as part of the submittals to the City of San Jose.

A total of 709 trees were assessed between the two properties. Of these trees, 381 were considered protected Ordinance Sized Trees.

681 East Trimble Road Property – Trees were evaluated on February 24, 2021 and March 2, 2021. Three hundred and ninety (390) trees representing 35 species, including two trees located on the vacant lot with crowns overhanging the property were evaluated. (Table 1). Descriptions of each tree are found in the ***Tree Assessment Forms*** and approximate locations are plotted on ***Tree Assessment Map 1*** (see Exhibits).

Adjacent vacant lot – Trees were evaluated on August 26, 2021 and September 7, 2021. Three hundred and nineteen (319) trees representing 24 species, including 125 off-site trees (located at 2670 Seely Avenue, San Jose) with crowns overhanging the property were evaluated. (Table 2). Descriptions of each tree are found in the ***Tree Assessment Forms*** and approximate locations are plotted on ***Tree Assessment Map 2*** (see Exhibits).

Protected Status

The City of San Jose defines protected Ordinance Sized Trees as “any live or dead woody perennial plant...having a main stem or trunk 38 inches or more in circumference (12 inches diameter) at a height measured 54 inches above natural grade slope” (SJMC 13.32.20.I. Updated February 2018). For multi-stem trees, the sum of all stem measurements equals the diameter of the tree for ordinance and mitigation purposes.

Two hundred and thirty-eight (238) trees at 681 East Trimble Road were Ordinance Sized Trees.

One hundred and forty-three (143) trees at the adjacent vacant lot were Ordinance Sized Trees.

Between the two parcels, 381 trees met this criterion.

Ordinance Sized Trees are identified on the ***Tree Assessment Forms***.

Disposition Recommendations

Based on my review of the plans, I recommend the removal of all 584 on-site trees due to the intensity of proposed remedial grading and development throughout the whole site, which the trees are unlikely to tolerate the impacts of.

The greatest opportunity for preservation lies with the 125 off-site trees located at 2670 Seely Avenue, San Jose, which have crowns overhanging the work area.

Introduction and Overview

The Hanover Company is in due diligence on a project involving the development of the subject properties in San Jose, CA. The 681 East Trimble Road site consisted of a farm with orchards, sheds, barns, dirt access roads, and a vacant house. The vacant lot was west of 681 East Trimble Road and contained volunteer vegetation and a row of screening vegetation along its western perimeter. HortScience | Bartlett Consulting, divisions of The F.A. Bartlett Tree Expert Company, was asked to prepare an **Arborist Report** for the proposed project as part of the submittals to the City of San Jose.

This report provides the following information:

1. Assessment of the health, structural condition, and suitability for preservation of the trees located within and adjacent to the proposed project area based on a visual inspection from the ground.
2. Preliminary recommendations for tree preservation and removal based on development plans provided by the client.
3. Tree preservation guidelines during the design, construction, and maintenance phases of construction.
4. **Tree Assessment Forms** and **Tree Assessment Maps** with descriptions of individual trees and their approximate locations.

Tree Assessment Methods

Trees were assessed on February 24, 2021 and March 2, 2021 at 681 East Trimble Road. Then, trees were assessed on August 26, 2021 and September 7, 2021 at the adjacent vacant parcel.

The assessment included all trees at least 6' in height within and with crown overhanging the proposed work areas. The assessment procedure consisted of the following steps:

1. Identifying the tree species;
2. Tagging each tree with a numerically coded metal tag and recording its location on a map. Off-site trees were not tagged and were assessed from the subject properties.
3. Measuring the trunk diameter of each tree 6 feet in height and taller at a point 54" above grade;
4. Evaluating health and structure based on a visual inspection from the ground:
 - Good (4-5)** A healthy tree that may have a slight decline in vigor, small amount of twig dieback, and minor structural defects that could be corrected.
 - Fair (3)** Tree with moderate vigor, moderate twig and small branch dieback, thinning of crown, poor leaf color, and moderate structural defects that might be mitigated with regular care.
 - Poor (1-2)** Tree in decline, epicormic growth, extensive dieback of medium to large branches, and significant structural defects that cannot be abated.
5. Rating the suitability for preservation as "high", "moderate", or "low". Suitability for preservation considers the health, age and structural condition of the tree, and its potential to remain an asset to the site for years to come.
 - High** Trees with good health and structural stability that have the potential for longevity at the site.
 - Moderate** Trees with somewhat declining health and/or structural defects that can be abated with treatment. The tree will require more intense management and monitoring, and may have shorter life span than those in 'high' category.
 - Low** Tree in poor health or with significant structural defects that cannot be mitigated. Tree is expected to continue to decline, regardless of

treatment. The species or individual may have characteristics that are undesirable for landscapes and generally are unsuited for use areas.

Description of Trees at 681 East Trimble, Site #1

Three hundred and ninety (390) trees representing 35 species were evaluated at the 681 East Trimble site, including two off-site trees on the adjacent lot with crowns overhanging. (Table 1). Trees were numbered #1-391. Most of the trees were planted in orchards. Other trees appeared to be volunteers. Descriptions of each tree are found in the **Tree Assessment Forms** and approximate locations are plotted on **Tree Assessment Map 1** (see Exhibits).

**Table 1. Condition ratings and frequency of occurrence of trees
681 East Trimble Road, San Jose, Site #1**

Common Name	Scientific Name	Condition			Total
		Poor (1-2)	Fair (3)	Good (4-5)	
Tree of heaven	<i>Ailanthus altissima</i>	1	21	1	23
Butterfly bush	<i>Buddleia davidii</i>	-	1	-	1
Pecan	<i>Carya illinoensis</i>	1	-	-	1
Chestnut	<i>Castanea dentata</i>	4	13	-	17
Deodar cedar	<i>Cedrus deodara</i>	1	-	-	1
European hackberry	<i>Celtis australis</i>	-	1	1	2
Lemon	<i>Citrus limon</i>	1	-	-	1
Tangerine	<i>Citrus reticulata</i>	-	1	-	1
Orange	<i>Citrus sinensis</i>	1	4	1	6
Cabbage palm	<i>Cordyline australis</i>	-	1	-	1
Persimmon	<i>Diospyros kaki</i>	32	75	-	107
Loquat	<i>Eriobotrya japonica</i>	-	2	-	2
Fig	<i>Ficus carica</i>	3	7	2	12
Evergreen ash	<i>Fraxinus uhdei</i>	-	1	-	1
California black walnut	<i>Juglans hindsii</i>	11	11	2	24
Glossy privet	<i>Ligustrum lucidum</i>	13	25	2	40
Apple	<i>Malus domestica</i>	1	7	-	8
Bottlebrush	<i>Melaleuca citrina</i>	1	-	-	1
Bamboo	<i>Bambusa spp</i>	-	1	-	1
Banana	<i>Musa spp.</i>	1	-	-	1
Heavenly bamboo	<i>Nandina domestica</i>	-	1	-	1
Olive	<i>Olea europaea</i>	-	-	1	1
Avocado	<i>Persea americana</i>	2	9	3	14
Chinese pistache	<i>Pistacia chinensis</i>	1	-	-	1
Cherry	<i>Prunus avium</i>	11	5	2	18
Purpleleaf plum	<i>Prunus cerasifera</i>	-	2	-	2

Plum	<i>Prunus domestica</i>	6	2	1	9
Almond	<i>Prunus dulcis</i>	12	7	-	19
Pomegranate	<i>Punica granatum</i>	1	1	-	2
Pear	<i>Pyrus communis</i>	15	4	-	19
Coast live oak	<i>Quercus agrifolia</i>	4	14	22	40
Holly oak	<i>Quercus ilex</i>	1	3	-	4
Italian buckthorn	<i>Rhamnus alaternus</i>	-	-	3	3
Siberian elm	<i>Ulmus pumila</i>	3	-	-	3
Mexican fan palm	<i>Washingtonia robusta</i>	-	3	-	3

Total		127	222	41	390
--------------	--	------------	------------	-----------	------------

Persimmon was the most commonly occurring species on-site. One hundred and seven (107) persimmons were growing in an orchard on the southern half of the property (Photo 1). Tree conditions ranged from poor (32 trees) to fair (75 trees). The trees had been pruned for fruit production, resulting in vase shaped crowns, re-sprouting from heading cuts, and multiple stems or codominant stems arising from the same points along each tree's trunk. Many of the trees also had mechanically damaged trunks and lower branches, likely from farm equipment.



Photo 1 – One hundred and seven (107) persimmon orchards trees were growing onsite.

Forty (40) glossy privets were also assessed. Tree conditions ranged from poor (13 trees) to good (two trees), with 25 trees in fair condition. The privets were unmaintained and appeared to be volunteers. Many had shrubby, overgrown forms and multiple stems that arose from the ground (Photo 2).



Photo 2 – Background: The larger coast live oaks had vigorous, spreading crowns.
 Foreground: Many privets had shrubby, overgrown forms.

Thirty-nine (39) coast live oaks were growing onsite. Coast live oak #51 was growing off-site with an overhanging crown. Overall, tree conditions ranged from poor (four trees) to good (22 trees) with 14 trees in fair condition. The coast live oaks were amongst the largest trees onsite. For example, coast live oak #337 had trunk diameters of 20, 18, 17, 16, and 6 inches. The larger, established coast live oaks had vigorous, spreading crowns that often suppressed the trees growing in the understory (Photo 2). Many small coast live oaks appeared to be volunteers.



Photo 3 – Nineteen (19) almond orchard trees were also included in the assessment.

Twenty-four (24) California black walnuts also grew onsite. Tree conditions ranged from poor (11 trees) to good (two trees) with 11 trees in fair condition. Trunk diameters and stage of development varied widely from 1 inch (young) to 24 inches (mature). The largest walnut was #358 with trunk diameters of 24, 18, and 16 inches. It grew in front of the existing house and had a spreading crown.

Nineteen (19) almond orchard trees were also included in the assessment (Photo 3). Tree conditions ranged from poor (12 trees) to fair (7 trees). Most of the trees exhibited signs of trunk and/or crown decay.

Twenty-three (23) trees of heaven were growing throughout the site. Tree conditions ranged from poor (one tree) to good (one tree) with 21 trees in fair condition. Most appeared to be volunteers with shrubby, vigorous, and unmaintained growth (Photo 4).

Seventeen (17) chestnut trees were growing onsite. Tree conditions ranged from poor (four trees) to fair (13 trees). Trunk diameters and stage of development varied from 2 inches (young) to 18 inches (mature). Most chestnuts were multi-stemmed. Chestnut #312, located near a utility pole, was in poor condition due to the presence of decay in its trunk and in old pruning wounds. Most of the chestnuts lined the main dirt access path on the southern half property.

The remaining 28 tree species represented approximately 30% of the inventory (120 trees). The most noteworthy of these included:

- Deodar cedar #350 was one of the largest trees assessed (36 inches in trunk diameter) with heavy partial failures in its crown. The tree was also topped and consequently, in poor condition.
- Fourteen (14) avocado trees were planted in an orchard. Tree conditions ranged from poor (two trees) to good (three trees) with nine trees in fair condition. Many had vigorous, spreading crowns with codominant structure. The smaller avocado trees were suppressed beneath the canopy of the large trees and consequently, had leggy forms with high crowns.

- Eighteen (18) cherry trees, 19 almond trees, nine plum trees, eight apple trees, 12 fig trees, and 19 pear trees were growing all around the property. Some had been planted in the orchard fields and were pruned for fruit production. Some of the pruning cuts were decayed. The remaining trees, however, were unmaintained and growing on the northern half of the property.
- Bamboo #82 was a large, overgrown clump with approximately 50 one inch stems.



Photo 4 – Most of the trees of heaven appeared to be volunteers with shrubby, vigorous, and unmaintained growth.

Description of Trees at the adjacent vacant lot, Site #2

Three hundred and nineteen (319) trees representing 24 species, including 122 off-site trees (located at 2670 Seely Avenue, San Jose) with crowns overhanging the property were evaluated. (Table 2). Trees were numbered #401-500 and 1164-1382. Descriptions of each tree are found in the **Tree Assessment Forms** and approximate locations are plotted on **Tree Assessment Map 2** (see Exhibits).

Table 2. Condition ratings and frequency of occurrence of trees Adjacent vacant lot, San Jose, Site #2

Common Name	Scientific Name	Condition			Total
		Poor (1-2)	Fair (3)	Good (4-5)	
Tree of heaven	<i>Ailanthus altissima</i>	-	-	1	1
Red ironbark	<i>Eucalyptus sideroxylon</i>	-	-	7	7
Raywood ash	<i>Fraxinus angustifolia</i> 'Raywood'	6	7	5	18

Arizona ash	<i>Fraxinus velutina</i>	6	2	3	11
California black walnut	<i>Juglans hindsii</i>	3	2	7	12
Glossy privet	<i>Ligustrum lucidum</i>	11	1	1	13
Oleander	<i>Nerium oleander</i>	2	1	48	51
Escallonia	<i>Escallonia spp.</i>	1	6	9	16
Olive	<i>Olea europaea</i>	4	4	4	12
Chinese pistache	<i>Pistacia chinensis</i>	-	-	3	3
Carolina cherry laurel	<i>Prunus caroliniana</i>	-	-	1	1
Purpleleaf plum	<i>Prunus cerasifera</i>	-	1	-	1
Almond	<i>Prunus dulcis</i>	5	-	-	5
Pear	<i>Pyrus communis</i>	35	1	1	37
Coast live oak	<i>Quercus agrifolia</i>	9	24	57	90
Canyon live oak	<i>Quercus chrysolepis</i>	-	-	1	1
Holly oak	<i>Quercus ilex</i>	-	1	7	8
Southern live oak	<i>Quercus virginiana</i>	-	1	1	2
Italian buckthorn	<i>Rhamnus alaternus</i>	3	11	2	16
Elderberry	<i>Sambucus sp.</i>	6	1	1	8
Brazilian pepper	<i>Schinus terebinthifolius</i>	-	-	1	1
Coast redwood	<i>Sequoia sempervirens</i>	-	-	1	1
California bay	<i>Umbellularia californica</i>	1	-	2	3
Mexican fan palm	<i>Washingtonia robusta</i>	-	-	1	1
Total		92	63	164	319

Many of the trees growing at the vacant lot were either volunteers (Photo 5), old dying orchard trees, or growing off-site as screening for the property at 2670 Seely Avenue, San Jose (Photo 6).

The City of San Jose defines Ordinance Sized Trees as "any live or dead woody perennial plant...having a main stem or trunk 38 inches or more in circumference (12" in diameter) at a height measured 54" above natural grade slope" (SJMC



Photo 5 – Many of the trees at the vacant lot were growing as volunteers- they were not intentionally planted nor were they being maintained.

13.32.20.I. Updated February 2018). For multi-stem trees, the sum of all stem measurements equals the diameter of the tree for ordinance and mitigation purposes. Between the two parcels, 381 trees met this criterion. Ordinance Sized Trees are identified on the **Tree Assessment Forms**.

Suitability for Preservation

Before evaluating the impacts that will occur during development, it is important to consider the quality of the tree resource itself, and the potential for individual trees to function well over an extended length of time. Trees that are preserved on development sites must be carefully selected to make sure that they may survive development impacts, adapt to a new environment and perform well in the landscape.



Photo 6 – Many trees near the vacant lot were growing along the western perimeter of the property. Most were off-site. These shrubby trees provided screening between the lot and the adjacent property.

Our goal is to identify trees that have the potential for long-term health, structural stability and longevity. For trees growing in open fields, away from areas where people and property are present, structural defects and/or poor health presents a low risk of damage or injury if they fail. However, we must be concerned about safety in use areas. Therefore, where development encroaches into existing plantings, we must consider their structural stability as well as their potential to grow and thrive in a new environment. Where development will not occur, the normal life cycles of decline, structural failure and death should be allowed to continue.

Evaluation of suitability for preservation considers several factors:

- **Tree health**
Healthy, vigorous trees are better able to tolerate impacts such as root injury, demolition of existing structures, changes in soil grade and moisture, and soil compaction than are non-vigorous trees. An example of such a tree is coast live oak #52.
- **Structural integrity**
Trees with significant amounts of wood decay and other structural defects that cannot be corrected are likely to fail. Such trees should not be preserved in areas where damage to people or property is likely. For example, pear #229 had past branch failures present in its crown, indicating future failures are possible.
- **Species response**
There is a wide variation in the response of individual species to construction impacts and changes in the environment. For example, coast live oak has relatively good tolerance of construction impacts while California black oak has poor tolerance.
- **Tree age and longevity**
Old trees, while having significant emotional and aesthetic appeal, have limited physiological capacity to adjust to an altered environment. Young trees are better able to generate new tissue and respond to change.
- **Species invasiveness**

Species that spread across a site and displace desired vegetation are not always appropriate for retention. This is particularly true when indigenous species are displaced. The California Invasive Plant Inventory Database <http://www.cal-ipc.org/plants/inventory/> lists species identified as being invasive. San Jose is part of the Central West Floristic Province. Mexican fan palm, Brazilian pepper, tree of heaven are listed as having moderate invasiveness potential. Glossy privet, plum, and olive are listed as having limited invasiveness potential. Limited potential is defined as: "These species are invasive but their ecological impacts are minor on a statewide level or there was not enough information to justify a higher score. Their reproductive biology and other attributes result in low to moderate rates of invasiveness. Ecological amplitude and distribution are generally limited, but these species may be locally persistent and problematic."

Each tree was rated for suitability for preservation based upon its age, health, structural condition and ability to safely coexist within a development environment (see **Tree Assessment** exhibit). Table provides a summary of the suitability for preservation for each tree.

We consider trees with high suitability for preservation to be the best candidates for preservation. We do not recommend retention of trees with low suitability for preservation in areas where people or property will be present. Retention of trees with moderate suitability for preservation depends upon the intensity of proposed site changes.

**Table 3. Tree suitability for preservation
681 East Trimble Road, San Jose**

High	These are trees with good health and structural stability that have the potential for longevity at the site. Thirty-nine (39) trees had high suitability.
Moderate	Trees in this category have fair health and/or structural defects that may be abated with treatment. Trees in this category require more intense management and monitoring, and may have shorter life-spans than those in the "high" category. One hundred and eighty-one (181) trees had moderate suitability.
Low	Trees in this category are in poor health or have significant defects in structure that cannot be abated with treatment. These trees can be expected to decline regardless of management. The species or individual tree may possess either characteristics that are undesirable in landscape settings or be unsuited for use areas. One hundred and seventy (170) trees had low suitability.

**Table 4. Tree suitability for preservation
Adjacent vacant lot, San Jose**

High	These are trees with good health and structural stability that have the potential for longevity at the site. Fifty-three (53) trees had high suitability.
Moderate	Trees in this category have fair health and/or structural defects that may be abated with treatment. Trees in this category require more intense management and monitoring, and may have shorter life-spans than those in the “high” category. One hundred and sixty-seven (167) trees had moderate suitability.
Low	Trees in this category are in poor health or have significant defects in structure that cannot be abated with treatment. These trees can be expected to decline regardless of management. The species or individual tree may possess either characteristics that are undesirable in landscape settings or be unsuited for use areas. Ninety-nine (99) trees had low suitability.

Preliminary Evaluation of Impacts and Recommendations

Appropriate tree retention requires a practical match between the location and intensity of construction activities and the quality and health of trees. The **Tree Assessment Forms** were the reference point for tree condition and suitability for preservation. Potential impacts from construction were evaluated using the Conceptual Site Plan (dated 8/19/2021) created by KTG Architecture and Planning.

The plan depicted the complete re-development of the site. All existing structures will be demolished and the site will be graded and paved. The construction of buildings, parking lots, paved walking paths, and landscaping are also planned. My evaluation of impacts is preliminary because the plans were conceptual in nature- they did not include surveyed tree trunk and canopy locations, nor did they include detail about utilities, grading, bioretention areas, landscaping, etc. that may also impact trees.

Based on my review of the plans, I recommend the removal of all 584 on-site trees due to the intensity of proposed grading, paving, and development, which the trees are unlikely to tolerate the impacts of.

The greatest opportunity for preservation lies with the 125 off-site trees located at 2670 Seely Avenue, San Jose. I recommend exploring the potential to preserve these trees and limit the proximity and intensity of development planned near them. These trees have crowns and likely also roots extending into the work area.

Disposition recommendations for each tree may be found in the **Tree Disposition Forms** Exhibit.

Impacts to trees to be retained can be minimized by following the **Preliminary Tree Preservation Guidelines**.

Tree Mitigation Requirements

The City of San Jose requires mitigation of trees removed on development sites. The species and exact number of trees to be planted on the site will be determined in consultation with the City Arborist and the Department of Planning, Building, and Code Enforcement. The City of San Jose requires the replacement of removed trees as follows:

**Table 5. City of San Jose Mitigation Requirements
 Trimble Properties, San Jose, CA**

Diameter of Tree to be Removed	Type of Tree to be Removed			Minimum Size of Each Replacement Tree
	Native	Non-Native	Orchard	
12 inches or greater	5:1	4:1	3:1	15-gallon container
6 - 11 inches	3:1	2:1	None	15-gallon container
less than 6 inches	1:1	1:1	None	15-gallon container

x:x = tree replacement to tree loss ratio

Note: Trees greater than 12" diameter shall not be removed unless a Tree Removal Permit, or equivalent, has been approved for the removal of such trees.

**Table 6. Types of trees to be removed by type and diameter
 Trimble Properties, San Jose, CA**

Diameter of Tree to be Removed	Type of Tree to be Removed		
	Native	Non-Native	Orchard
12 inches or greater (Ordinance Size)	52	40	169
6 - 11 inches	35	42	97
less than 6 inches	42	47	60

**Table 7. Replacement of trees being removed
 Trimble Properties, San Jose, CA**

Diameter of Tree to be Removed	Type of Tree to be Removed			Minimum Size of Each Replacement Tree
	Native	Non-Native	Orchard	
12 inches or greater	260	160	507	15-gallon container
6 - 11 inches	105	84	0	15-gallon container
less than 6 inches	42	47	0	15-gallon container

Based on my evaluation of the plans and the standard replacement ratios for the City of San Jose, I calculated 1,205 15-gallon trees as the replacement requirement for all trees recommended for removal (Table 7).

Alternative Mitigation Measures

In the event the project site does not have sufficient area to accommodate the required tree mitigation, one or more of the following measures may be implemented, to the satisfaction of the City's Environmental Principal Planner, at the development permit stage:

- The size of a 15-gallon replacement tree can be increased to 24" box and count as two replacement trees.
- An alternative site(s) will be identified for additional tree planting. Alternative sites may include local parks or schools or installation of trees on adjacent properties for screening.

A donation of \$775 per mitigation tree to Our City Forest or San Jose Beautiful for in-lieu off-site tree planting in the community. These funds will be used for tree planting and maintenance of planted trees for approximately three years.

Preliminary Tree Preservation Guidelines

The goal of tree preservation is not merely tree survival during development but maintenance of tree health and beauty for many years. Trees retained on sites that are either subject to extensive injury during construction or are inadequately maintained become a liability rather than an asset. The response of individual trees will depend on the amount of excavation and grading, the care with which demolition is undertaken, and the construction methods.

The following recommendations will help reduce impacts to trees from development and maintain and improve their health and vitality through the clearing, grading and construction phases.

Design recommendations

1. Any plan affecting trees should be reviewed by the Consulting Arborist with regard to tree impacts. These include, but are not limited to, improvement plans, utility and drainage plans, grading plans, landscape and irrigation plans and demolition plans.
2. **Tree Preservation Guidelines** prepared by the Consulting Arborist should be included on all plans.
3. No underground services including utilities, sub-drains, water or sewer shall be placed in the **TREE PROTECTION ZONE**. To minimize impacts to trees, locate underground services to provide as much room as possible from trees identified for preservation.
4. Any herbicides placed under paving materials must be safe for use around trees and labeled for that use.
5. Irrigation systems must be designed to avoid trenching within the **TREE PROTECTION ZONE**.
6. A **TREE PROTECTION ZONE** must be established for trees to be preserved, in which no disturbance is permitted. No grading, excavation, construction or storage of materials shall occur within that zone without the prior approval of and under direct supervision by the Consulting Arborist.
7. Do not apply lime to soil for stabilization within 25' of trees to be preserved. Lime is toxic to tree roots.

Pre-construction treatments and recommendations

1. The demolition contractor and construction superintendent shall meet with the Consulting Arborist before beginning work to discuss work procedures and tree protection.

2. Where fencing is not an option, such as with street trees, in the minimum wrap the trunks of those trees adjacent to proposed demolition and construction work to a height of 8' with straw wattle and orange snow fencing to provide a visual cue and protection from incidental contact.
3. Any grading within the **TREE PROTECTION ZONE** specified in the above table shall be performed by hand and under direct supervision of the Consulting Arborist.
4. Prune trees to be preserved to provide adequate clearance and correct any existing defects in structure. Any pruning of off-site trees must be performed with the property owner's permission. All pruning shall be done by Certified Arborist or Certified Tree Worker in accordance with the Best Management Practices for Pruning (International Society of Arboriculture, 2002) and adhere to the most recent editions of the American National Standard for Tree Care Operations (Z133.1) and Pruning (A300).
5. All tree work shall comply with the Migratory Bird Treaty Act as well as California Fish and Wildlife code 3503-3513 to not disturb nesting birds. To the extent feasible tree pruning and removal should be scheduled outside of the breeding season. Breeding bird surveys should be conducted prior to tree work. Qualified biologists should be involved in establishing work buffers for active nests.

Recommendations for tree protection during construction

1. Prior to beginning work, the contractors working in the vicinity of trees to be preserved are required to meet with the Consulting Arborist at the site to review all work procedures, access routes, storage areas and tree protection measures.
2. No grading, construction, demolition or other work shall occur within the **TREE PROTECTION ZONE**. Any modifications must be approved and monitored by the Consulting Arborist.
3. Any excavation within the **TREE PROTECTION ZONE** or other work that is expected to encounter tree roots should be approved and monitored by the Consulting Arborist. Roots shall be cut by manually digging a trench and cutting exposed roots with a sharp saw. The Consulting Arborist will identify where root pruning is required and monitor all root pruning activities.
4. All underground utilities, drain lines or irrigation lines shall be routed outside the **TREE PROTECTION ZONE**. If lines must traverse through the protection area, they shall be tunneled or bored under the tree as directed by the Consulting Arborist.
5. If injury should occur to any tree during construction, it should be evaluated as soon as possible by the Consulting Arborist so that appropriate treatments can be applied.
6. No excess soil, chemicals, debris, equipment or other materials shall be dumped or stored within the **TREE PROTECTION ZONE**.
7. Any additional tree pruning needed for clearance during construction must be performed by a Certified Arborist and not by construction personnel.

Maintenance of impacted trees

Trees preserved onsite may experience a physical environment different from that pre-development. As a result, tree health and structural stability should be monitored. Occasional pruning, fertilization, mulch, pest management, replanting and irrigation may be required.

HortScience | Bartlett Consulting



Jillian M. Keller
ISA Certified Arborist Utility Specialist WE-12057A
ISA Tree Risk Assessment Qualified
Wildlife Trained Arborist

(925) 519-6185
jkeller@bartlett.com



Exhibits

Tree Assessment Forms

Tree Assessment Maps

Tree Disposition and Mitigation Forms



Tree Assessment

681 East Trimble
San Jose, CA
March 2021

Tree No.	Species	Trunk Diameter (in.)	Ordinance Tree?	Condition 1=poor 5=excellent	Suitability for Preservation	Comments
1	Mexican fan palm	14	Yes	3	Moderate	Black speckling on fronds; lower fronds still attached; 10' of brown trunk.
2	Purpleleaf plum	4	No	3	Moderate	Good upright form; re-sprouting at base.
3	Purpleleaf plum	4	No	3	Moderate	Good upright form; slightly suppressed.
4	Butterfly bush	3,3,3,2,2,2,2,2	Yes	3	Moderate	Multiple attachments arise at base; spreading crown with good vigor.
5	Cherry	5,4,4,4,3,3,3,2	Yes	3	Moderate	Spreading crown; multiple attachments arise at 1'.
6	Pear	4,3	No	3	Moderate	Fruit tree headed back; low branching; adjacent to utility pole.
7	Pear	2,2,1,1	No	2	Low	Orchard tree; topped and headed back with re-sprouting stems and decay.
8	Pear	1,1	No	2	Low	Orchard tree; topped and headed back with re-sprouting stems and decay.
9	Pear	4	No	2	Low	Orchard tree; topped and headed back with resprouting wounds and decay.
10	Glossy privet	5,4,4,3,3,3	Yes	3	Low	Vigorous upright low branching volunteer; multiple attachments arise at base.
11	Glossy privet	3,2,2,1,1,1,1	No	3	Low	Vigorous upright low branching volunteer; multiple attachments arise at base.
12	Pear	4,4,3,3,2	Yes	1	Low	Upright spreading low branching form.
13	California black walnut	1,1,1,1,1,1,1,1,1	No	1	Low	All but dead.
14	Glossy privet	4,3,3,3,3,3,2,2	Yes	3	Low	Multiple attachments arise at base; upright vigorous growth.
15	Coast live oak	1	No	3	Moderate	Slightly suppressed upright volunteer; vigorous growth.
16	California black walnut	3,2,2	No	1	Low	Dead.
17	Coast live oak	3	No	3	Moderate	Slightly suppressed upright volunteer; vigorous growth.
18	Chestnut	8,7,7	Yes	3	Moderate	Multiple attachments arise at base; spreading form; adjacent to utility pole.
19	Glossy privet	1,1,1,1,1	No	3	Low	Upright leggy volunteer in dense thicket; multiple attachments arise at base.
20	Glossy privet	1	No	3	Moderate	In dense thicket; upright leggy form.
21	Cherry	4	No	1	Low	Dead.
22	Chestnut	12,10,7	Yes	3	Moderate	Multiple fused attachments arise at base; upright form.
23	Chestnut	3,3,2	No	3	Moderate	Multiple attachments arise at base; spreading vigorous form.
24	Coast live oak	4,2,2,2	No	4	High	Vigorous volunteer with upright form and a slight lean.
25	Pear	6,6,3,3,3,2,2	Yes	1	Low	All but dead; decay at base.
26	Coast live oak	6,4	No	4	High	Vigorous volunteer; slightly one sided crown; codominant at 1'.
27	Cherry	2,1,1,1	No	1	Low	Dead.
28	Chestnut	7,6,5,4,4,4,3,3	Yes	3	Moderate	Multiple attachments arise at 1'; spreading crown; decay in stem attachments; poor structure.
29	Coast live oak	12,10,8,8	Yes	4	High	Spreading crown with vigorous growth; minor interior dieback; multiple attachments arise at 4'.
30	Pear	12,10,6	Yes	2	Low	Spreading form with moderate dieback; decay and wounding on trunk.
31	Coast live oak	2	No	2	Low	Shrubby form with moderate dieback.
32	Pear	3,3,2,2,2,2	Yes	1	Low	All but dead; base and trunk split down the middle.
33	Glossy privet	3,2,2,2	No	3	Low	Suppressed volunteer near base of fruit tree; multiple attachments arise from the ground.
34	Pear	4,4,4,3,3,2,2	Yes	1	Low	Dead.
35	Pear	3,2,2,2	No	1	Low	Dead.
36	Apple	7,4,4,4,3,3	Yes	3	Moderate	Spreading crown with vigorous growth; partial failure at base and lower trunk leans.
37	Coast live oak	25,5	Yes	4	High	Codominant at 3'; dense spreading crown; low branching.
38	Cherry	3,2,2,2,2	No	2	Low	Shrubby volunteer; dead main stem.
39	Coast live oak	1	No	2	Moderate	Suppressed leggy volunteer with a lean.
40	Chestnut	6,6,6,5,5,5,4	Yes	1	Low	All but dead; spreading form with multiple attachments arising at base.
41	Coast live oak	8	No	4	High	In dense thicket; upright form and vigorous crown.
42	Coast live oak	6	No	4	High	In dense thicket; high crown; vigorous top.

43	California black walnut	1	No	3	Moderate	Good young fruit tree volunteer with upright form.
44	Coast live oak	1,1	No	3	Moderate	Shrubby volunteer; multiple attachments at base.
45	Coast live oak	1	No	3	Moderate	Leggy volunteer.
46	Chestnut	7,6,4,3,3,3	Yes	3	Moderate	Spreading crown; multiple attachments arise at base.
47	Coast live oak	10	No	4	High	Dense spreading crown; at property line.
48	California black walnut	3,2	No	3	Moderate	Good young tree with upright form; codominant at 3'.
49	California black walnut	3	No	3	Moderate	Good young tree with upright form.
50	California black walnut	6,6,5,5,5,4	Yes	2	Low	Trunk and base partially spilt down the middle.
51	Coast live oak	16,14,14,12	Yes	4	High	Offsite; fence tagged; overhangs property; vigorous spreading crown.
52	Coast live oak	6,2	No	4	High	Good young tree with upright dense growth.
53	Coast live oak	4,3,2,2	No	4	High	Good young tree with upright growth.
54	Coast live oak	2,2	No	4	High	Good young tree with upright growth.
55	California black walnut	12,12,12,12	Yes	2	Low	Spreading low branching crown with signs of past failures.
56	Glossy privet	1,1,1,1,1	No	3	Low	Vigorous volunteer with upright form.
57	Tree of heaven	4,3	No	3	Low	Leggy volunteer; surrounded by farm equipment.
58	Tree of heaven	4	No	3	Low	Leggy volunteer.
59	Tree of heaven	5	No	3	Low	Leggy volunteer; codominant at 10'.
60	Tree of heaven	8,6	Yes	3	Low	Leggy volunteer; codominant at base.
61	Tree of heaven	2	No	3	Low	Leggy volunteer overhanging property; offsite; fence tagged.
62	Coast live oak	1	No	3	Moderate	Leggy volunteer with shrubby growth.
63	Almond	5,4,4,3,3,3,3,2,2	Yes	2	Low	Leans with one sided crown, multiple attachments arise at 2'.
64	Glossy privet	2,2,2,1,1,1,1	No	4	Moderate	Dense vigorous growth with multiple attachments at base.
65	Coast live oak	12,10	Yes	4	High	One sided crown; minor dieback; dense crown with upright form.
66	Tree of heaven	18	Yes	3	Low	Large spreading volunteer; multiple attachments arise at 5'.
67	Tree of heaven	4,4,4,4,3,3	Yes	3	Low	Leggy volunteer; multiple stems arise from the ground.
68	Tree of heaven	3,3	No	3	Low	Leggy volunteer; multiple stems arise from the ground.
69	California black walnut	7,6,6,6,5	Yes	1	Low	Dead standing; multiple attachments arise at base.
70	California black walnut	6,5,4	Yes	3	Moderate	Good young fruit tree with codominant, spreading form.
71	Coast live oak	1	No	4	Moderate	Good young tree growing between farm equipment; good upright form.
72	Cherry	1,1	No	3	Moderate	Good young fruit tree with upright form.
73	Cherry	4,3	No	3	Moderate	Good young fruit tree with spreading form; low branching; multistem.
74	Cherry	1,1,1	No	3	Moderate	Good young fruit tree with spreading form; multistem.
75	Glossy privet	1,1,1,1,1,1,1,1,1,1	No	4	Low	Vigorous, dense upright form; volunteer.
76	Coast live oak	18,16,12,8,8,4	Yes	3	High	Vigorous, spreading dense crown; internal decay; 18" stem split and failed; multiple attachments arise at the same point.
77	Glossy privet	4,2,1,1,1	No	3	Low	Vigorous; leggy volunteer.
78	Glossy privet	2,2,2,1,1	No	3	Low	Vigorous; leggy volunteer.
79	Chestnut	14,8,4,2	Yes	3	Moderate	Large; overgrown; unmaintained; engulfed in vines.
80	Chestnut	20	Yes	2	Low	Large upright tree; past failures; deadwood in crown; decay in crown.
81	Avocado	16,14	Yes	3	Moderate	Adjacent to building; vigorous upper crown.
82	Bamboo	~50 1" stems	Yes	3	Low	Large overgrown bamboo clump.
83	Coast live oak	23	Yes	3	Moderate	Adjacent to shed; codominant at 6'; vigorous growth and large crown extending over shed.
84	Glossy privet	6	No	3	Low	In between shed and barn; vigorous growth; inaccessible; tagged on tree #85
85	Glossy privet	16	Yes	3	Low	In between shed and barn; vigorous growth.
86	Pomegranate	8,4,3,3	Yes	2	Low	Overgrown and unmaintained; poor structure and surrounded by dense vegetation; decay in trunk.
87	Almond	3,3,3,2,2,2	Yes	2	Low	Orchard tree; multiple attachments arise at the same point: decayed pruning wounds and trunk.
88	Glossy privet	1,1,1,1,1,1,1,1	No	3	Low	Large, overgrown vigorous clump.
89	Glossy privet	8,7,6,4,3,3,2,2	Yes	3	Low	Large overgrown, vigorous clump.
90	Glossy privet	1,1,1,1,1,1,1,1	No	2	Low	Upright leggy thin volunteer adjacent to dead orchard tree.
91	Almond	6,5,5,4,4,4	Yes	2	Low	Orchard tree; multiple attachments arise at the same point; trunk and crown decay; one sided crown.

92	Almond	6,4,4,4	Yes	2	Low	Orchard tree; multiple attachments arise at the same point.; trunk and crown decay; unmaintained and overgrown.
93	Almond	6,5,5,4,4,4,	Yes	2	Low	Orchard tree; multiple attachments arise at the same point.; trunk and crown decay.
94	Glossy privet	2,2,2,1	No	2	Low	Upright leggy thin volunteer adjacent to declining orchard tree.
95	Almond	12,2,2	Yes	2	Low	Orchard tree; multiple attachments arise at the same point; trunk and crown decay.
96	Almond	6,5,4	Yes	2	Low	Orchard tree; basal wound; decay where multiple attachments arise at the same point; decaying branch wounds and stems.
97	Almond	6,5,5,4,4	Yes	3	Moderate	Orchard tree; basal wound; decay where multiple attachments arise at the same point.
98	Glossy privet	1,1,1,1,1,1	No	2	Low	Thin leggy upright volunteer adjacent to declining orchard tree.
99	Almond	6,5,5,4,4,4	Yes	2	Low	Internal and crown decay; orchard tree; spreading crown.
100	Glossy privet	3,3,2,2,1	No	2	Low	Leggy upright thin volunteer adjacent to declining orchard tree.
101	Persimmon	8,8,7	Yes	3	Moderate	Orchard tree; basal wound; pruned with re-sprouting heading cuts for fruit production; multiple stems arise from the same point.
102	Persimmon	7,7,4	Yes	3	Moderate	Orchard tree; basal wound; pruned with re-sprouting heading cuts for fruit production; multiple stems arise from the same point.
103	Persimmon	8,6	Yes	3	Moderate	Orchard tree; basal wound; pruned with re-sprouting heading cuts for fruit production; multiple stems arise from the same point.
104	Persimmon	7,7,4	Yes	3	Moderate	Orchard tree; basal wound; pruned with re-sprouting heading cuts for fruit production; multiple stems arise from the same point.
105	Persimmon	8,6	Yes	3	Moderate	Orchard tree; basal wound; pruned with re-sprouting heading cuts for fruit; codominant form.
106	Persimmon	8,7,4	Yes	3	Moderate	Orchard tree; pruned with re-sprouting heading cuts for fruit; multiple stems arise from the same point.
107	Persimmon	10,4	Yes	3	Moderate	Orchard tree; basal wound; pruned with re-sprouting heading cuts for fruit production; multiple stems arise from the same point.
108	Persimmon	10	No	3	Moderate	Orchard tree; basal wound; pruned with re-sprouting heading cuts; codominant form.
109	Persimmon	7,3,3	Yes	3	Moderate	Orchard tree; basal wound; pruned with re-sprouting heading cuts; codominant form.
110	Persimmon	8,5	Yes	3	Moderate	Orchard tree; basal wound; pruned with re-sprouting heading cuts; codominant form.
111	Persimmon	9,1	No	2	Low	Orchard tree; signs of internal decay; pruned with re-sprouting heading cuts; codominant form.
112	Persimmon	8,1,1	No	2	Low	Orchard tree; signs of internal decay; pruned with re-sprouting heading cuts; multiple stems arise from the same point.
113	Persimmon	9,3,1	Yes	3	Moderate	Orchard tree; basal wound; pruned with re-sprouting heading cuts; multiple stems arise from the same point.
114	Persimmon	8,4,4,4,4	Yes	2	Low	Orchard tree; basal wound and internal decay; pruned with re-sprouting heading cuts; multiple stems arise from the same point.
115	Persimmon	6,6,5,3	Yes	3	Moderate	Orchard tree; spreading form; pruned with re-sprouting heading cuts; multiple stems arise from the same point.
116	Persimmon	8,5,5	Yes	2	Low	Orchard tree; pruned with re-sprouting heading cuts; multiple stems arise from the same point; internal decay.
117	Persimmon	7,6,5,2	Yes	2	Low	Orchard tree; pruned with re-sprouting heading cuts; multiple stems arise from the same point; decayed stub cuts.
118	Persimmon	7,6,4,3	Yes	3	Moderate	Orchard tree; spreading form; pruned with re-sprouting heading cuts; multiple stems arise from the same point.
119	Persimmon	8,6	Yes	3	Moderate	Orchard tree; basal wound; spreading form; pruned with re-sprouting heading cuts; multiple stems arise from the same point.
120	Persimmon	8,7,5	Yes	2	Low	Orchard tree; basal wound and internal decay; spreading form; pruned with re-sprouting heading cuts; multiple stems arise from the same point.
121	Persimmon	8,2,2	Yes	3	Moderate	Orchard tree; internal decay; spreading form; pruned with re-sprouting heading cuts; multiple stems arise from the same point.
122	Persimmon	7,5,3,3	Yes	2	Low	Orchard tree; basal and branch wounds; internal decay; spreading form; pruned with re-sprouting heading cuts; multiple stems arise from the same point.

123	Persimmon	6,4,2	No	2	Low	Orchard tree; basal wound; internal decay; spreading form; pruned with re-sprouting heading cuts; multiple stems arise from the same point; trunk lean.
124	Persimmon	8,6	Yes	3	Moderate	Orchard tree; basal wound; internal decay; spreading form; pruned with re-sprouting heading cuts; multiple stems arise from the same point.
125	Persimmon	6,6,5,3	Yes	3	Moderate	Orchard tree; basal wound; internal decay; spreading form; pruned with re-sprouting heading cuts; multiple stems arise from the same point.
126	Persimmon	7,6,4	Yes	3	Moderate	Orchard tree; spreading form; pruned with re-sprouting heading cuts; multiple stems arise from the same point.
127	Persimmon	8,5,4,2	Yes	3	Moderate	Orchard tree; spreading form; pruned with re-sprouting heading cuts; multiple stems arise from the same point.
128	Persimmon	7,4	No	3	Moderate	Orchard tree; spreading form; pruned with re-sprouting heading cuts; codominant form.
129	Persimmon	8,3,2	Yes	3	Moderate	Orchard tree; basal wound; spreading form; pruned with re-sprouting heading cuts; codominant form.
130	Persimmon	8,7	Yes	3	Moderate	Orchard tree; trunk wounds; spreading form; pruned with re-sprouting heading cuts; codominant form.
131	Persimmon	5,5,4,2	Yes	3	Moderate	Orchard tree; trunk wounds; spreading form; pruned with re-sprouting heading cuts; codominant form.
132	Persimmon	9	No	3	Moderate	Orchard tree; internal decay and trunk wounds; spreading form; pruned with re-sprouting heading cuts; codominant form.
133	Persimmon	8,6,3,3,3	Yes	3	Moderate	Orchard tree; internal decay and trunk wounds; spreading form; pruned with re-sprouting heading cuts; codominant form.
134	Persimmon	6,5,5,3	Yes	2	Low	Orchard tree; internal decay and basal wound; spreading form; pruned with re-sprouting heading cuts; multiple stems arise from the same point; trunk leans.
135	Persimmon	7,6,5,3,3	Yes	3	Moderate	Orchard tree; spreading form; pruned with re-sprouting heading cuts; multiple stems arise from the same point.
136	Persimmon	7,4,2	Yes	3	Moderate	Orchard tree; spreading form; pruned with re-sprouting heading cuts; multiple stems arise from the same point.
137	Persimmon	7,6	Yes	3	Moderate	Orchard tree; spreading form; pruned with re-sprouting heading cuts; codominant form.
138	Persimmon	7,5	Yes	2	Low	Orchard tree; large basal wound; internal decay spreading form; pruned with re-sprouting heading cuts; codominant form.
139	Persimmon	6,6,3,1	Yes	3	Moderate	Orchard tree; internal decay around stub cuts; spreading form; pruned with re-sprouting heading cuts; codominant form.
140	Persimmon	9	No	3	Moderate	Orchard tree; decay around stub cuts; spreading form; pruned with re-sprouting heading cuts; codominant form.
141	Persimmon	7,5,1	Yes	2	Low	Orchard tree; basal wound; internal decay; spreading form; pruned with re-sprouting heading cuts; codominant form.
142	Persimmon	8,3,2	Yes	2	Low	Orchard tree; basal wound; internal decay; spreading form; pruned with re-sprouting heading cuts; codominant form; narrow attachments.
143	Persimmon	8,5	Yes	3	Moderate	Orchard tree; basal wound; internal decay; spreading form; pruned with re-sprouting heading cuts; codominant form.
144	Persimmon	7,7,5,3	Yes	3	Moderate	Orchard tree; basal wound; internal decay; spreading form; pruned with re-sprouting heading cuts; codominant form.
145	Persimmon	7,5,4,3	Yes	3	Moderate	Orchard tree; internal decay; spreading form; pruned with re-sprouting heading cuts; multiple attachments arise at the same point..
146	Persimmon	7,6,3	Yes	3	Moderate	Orchard tree; internal decay at base with wounds; spreading form; pruned with re-sprouting heading cuts; multiple attachments arise at the same point..
147	Persimmon	6,6,4	Yes	3	Moderate	Orchard tree; internal decay; trunk wounds; spreading form; pruned with re-sprouting heading cuts; multiple attachments arise at the same point..
148	Persimmon	9,4,4	Yes	3	Moderate	Orchard tree; internal decay; trunk wounds; spreading form; pruned with re-sprouting heading cuts; multiple attachments arise at the same point..
149	Persimmon	6,6,3	Yes	3	Moderate	Orchard tree; mechanical damage on trunk; spreading form; pruned with re-sprouting heading cuts; multiple attachments arise at the same point..
150	Persimmon	7,6,2	Yes	3	Moderate	Orchard tree; mechanical damage on trunk; spreading form; pruned with re-sprouting heading cuts; codominant form.
151	Persimmon	8,2,2	Yes	3	Moderate	Orchard tree; spreading form; pruned with re-sprouting heading cuts; multiple attachments arise at the same point..
152	Persimmon	8,1	No	3	Moderate	Orchard tree; basal wound; spreading form; pruned with re-sprouting heading cuts; multiple attachments arise at the same point..
153	Persimmon	5,5	No	3	Moderate	Orchard tree; decaying stems; spreading form; pruned with re-sprouting heading cuts; codominant form.

154	Persimmon	7,5,5	Yes	3	Moderate	Orchard tree; decaying stems; spreading form; pruned with re-sprouting heading cuts; multiple attachments arise at the same point..
155	Persimmon	7,5,2,2	Yes	3	Moderate	Orchard tree; decaying stems and trunk wounds; spreading form; pruned with re-sprouting heading cuts; multiple attachments arise at the same point..
156	Persimmon	8,7,6,4	Yes	3	Moderate	Orchard tree; decaying stems and trunk wounds; spreading form; pruned with re-sprouting heading cuts; multiple attachments arise at the same point..
157	Persimmon	8	No	3	Moderate	Orchard tree; decaying stems and trunk wounds; spreading form; pruned with re-sprouting heading cuts; trunk leans; codominant form.
158	Persimmon	7,6,6,4,3	Yes	3	Moderate	Orchard tree; decaying stems and trunk wounds; spreading form; pruned with re-sprouting heading cuts; trunk leans; multiple attachments arise at the same point..
159	Persimmon	7,7,3	Yes	2	Low	Orchard tree; decaying stems and trunk wounds; spreading form; pruned with re-sprouting heading cuts; trunk leans; multiple attachments arise at the same point..
160	Persimmon	8,5,2,2	Yes	3	Moderate	Orchard tree; decaying stems and trunk wounds; spreading form; pruned with re-sprouting heading cuts; multiple attachments arise at the same point..
161	Persimmon	7,6,1	Yes	2	Low	Orchard tree; decaying stems and trunk wounds; spreading form; pruned with re-sprouting heading cuts; multiple attachments arise at the same point..
162	Persimmon	9,4	Yes	2	Low	Orchard tree; decaying stems and trunk wounds; spreading form; pruned with re-sprouting heading cuts; multiple attachments arise at the same point..
163	Persimmon	8,4,3	Yes	2	Low	Orchard tree; decaying stems and trunk wounds; spreading form; pruned with re-sprouting heading cuts; codominant form.
164	Persimmon	7,4,3	Yes	3	Moderate	Orchard tree; decaying stems; trunk wound; spreading form; pruned with re-sprouting heading cuts; multiple attachments arise at the same point..
165	Persimmon	7,6,6,4	Yes	3	Moderate	Orchard tree; decaying stems; trunk wound; spreading form; pruned with re-sprouting heading cuts; multiple attachments arise at the same point..
166	Persimmon	7,6,4,2	Yes	3	Moderate	Orchard tree; decaying stems; trunk wound; spreading form; pruned with re-sprouting heading cuts; multiple attachments arise at the same point..
167	Persimmon	7,6,1	Yes	3	Moderate	Orchard tree; decaying stems; trunk wound; spreading form; pruned with re-sprouting heading cuts; codominant form.
168	Persimmon	6,5,4	Yes	2	Low	Orchard tree; decaying stems; large trunk wound; spreading form; pruned with re-sprouting heading cuts; codominant form.
169	Persimmon	7,6,5	Yes	2	Low	Orchard tree; decaying stems; trunk wounds; spreading form; pruned with re-sprouting heading cuts; multiple attachments arise at the same point.
170	Persimmon	6,2,2	No	3	Moderate	Orchard tree; decaying stems; trunk wounds; spreading form; pruned with re-sprouting heading cuts; multiple attachments arise at the same point.
171	Persimmon	6,3,2	No	2	Low	Orchard tree; decaying stems; large trunk wounds; spreading form; pruned with re-sprouting heading cuts; codominant form.
172	Persimmon	6,6	Yes	2	Low	Orchard tree; decaying stems; large trunk wounds; spreading form; pruned with re-sprouting heading cuts; codominant form.
173	Persimmon	6,6	Yes	3	Moderate	Orchard tree; decaying stems; trunk wounds; spreading form; pruned with re-sprouting heading cuts; multiple attachments arise at the same point.
174	Persimmon	8	No	3	Moderate	Orchard tree; decaying stems; trunk wounds; spreading form; pruned with re-sprouting heading cuts; multiple attachments arise at the same point.
175	Persimmon	7,4,4,4	Yes	3	Moderate	Orchard tree; decaying stems; trunk wounds; spreading form; pruned with re-sprouting heading cuts; multiple attachments arise at the same point.
176	Persimmon	6,6	Yes	3	Moderate	Orchard tree; decaying stems; trunk wounds; spreading form; pruned with re-sprouting heading cuts; multiple attachments arise at the same point.
177	Persimmon	7,5,3	Yes	3	Moderate	Orchard tree; decaying stems; trunk wounds; spreading form; pruned with re-sprouting heading cuts; multiple attachments arise at the same point.
178	Persimmon	6,5,2	Yes	2	Low	Orchard tree; decaying trunk; trunk wounds; spreading form; pruned with re-sprouting heading cuts; codominant form.
179	Persimmon	7,2,2	No	2	Low	Orchard tree; decaying trunk; trunk wounds; spreading form; pruned with re-sprouting heading cuts; multiple attachments arise at the same point.

180	Persimmon	8	No	3	Moderate	Orchard tree; basal wound; trunk wounds; spreading form; pruned with re-sprouting heading cuts; codominant form.
181	Persimmon	8,3	No	3	Moderate	Orchard tree; basal wound; trunk wounds; spreading form; pruned with re-sprouting heading cuts; codominant form.
182	Persimmon	7,7	Yes	3	Moderate	Orchard tree; trunk wounds; spreading form; pruned with re-sprouting heading cuts; codominant form.
183	Persimmon	6,6,4,4	Yes	2	Low	Orchard tree; basal wound; spreading form; pruned with re-sprouting heading cuts; codominant form; leans.
184	Persimmon	5,4,4	Yes	3	Moderate	Orchard tree; trunk wounds; internal decay; spreading form; pruned with re-sprouting heading cuts; multiple attachments arise at the same point.
185	Persimmon	7,5,3,3	Yes	3	Moderate	Orchard tree; trunk wounds; internal decay; spreading form; pruned with re-sprouting heading cuts; multiple attachments arise at the same point.
186	Persimmon	6,6,4,4,3	Yes	3	Moderate	Orchard tree; trunk wounds; internal decay; spreading form; pruned with re-sprouting heading cuts; multiple attachments arise at the same point.
187	Persimmon	6,6,5,4	Yes	3	Moderate	Orchard tree; trunk wounds; internal decay; spreading form; pruned with re-sprouting heading cuts; multiple attachments arise at the same point.
188	Persimmon	6,4,2	No	3	Moderate	Orchard tree; trunk wounds; internal decay; spreading form; pruned with re-sprouting heading cuts; codominant form.
189	Persimmon	6,4,4	Yes	2	Low	Orchard tree; large trunk wounds; internal decay; spreading form; pruned with re-sprouting heading cuts; multiple attachments arise at the same point.
190	Persimmon	7	No	3	Moderate	Orchard tree; trunk wounds; internal decay; spreading form; pruned with re-sprouting heading cuts; multiple attachments arise at the same point.
191	Persimmon	6,4	No	3	Moderate	Orchard tree; trunk wounds; internal decay; spreading form; pruned with re-sprouting heading cuts; multiple attachments arise at the same point.
192	Persimmon	6,5,2	Yes	3	Moderate	Orchard tree; trunk wounds; internal decay; spreading form; pruned with re-sprouting heading cuts; multiple attachments arise at the same point.
193	Persimmon	7,6,5	Yes	2	Low	Orchard tree; large basal wound; internal decay; spreading form; pruned with re-sprouting heading cuts; multiple attachments arise at the same point.
194	Persimmon	7,4,3	Yes	2	Low	Orchard tree; extensive internal decay; spreading form; pruned with re-sprouting heading cuts; multiple attachments arise at the same point.
195	Persimmon	7,4,3	Yes	2	Low	Orchard tree; trunk and basal wounds; spreading form; pruned with re-sprouting heading cuts; codominant form.
196	Persimmon	5,5,3	Yes	3	Moderate	Orchard tree; trunk wounds; spreading form; pruned with re-sprouting heading cuts; codominant form.
197	Persimmon	8,3,2,2	Yes	3	Moderate	Orchard tree; trunk and basal wounds; spreading form; pruned with re-sprouting heading cuts; multiple attachments arise at the same point.
198	Persimmon	6,5,3,2	Yes	3	Moderate	Orchard tree; internal decay; trunk and basal wounds; spreading form; pruned with re-sprouting heading cuts; codominant form.
199	Persimmon	7,4,3	Yes	3	Moderate	Orchard tree; internal decay; trunk and basal wounds; spreading form; pruned with re-sprouting heading cuts; multiple attachments arise at the same point.
200	Persimmon	4,3,3,3,3	Yes	2	Low	Orchard tree; extensive internal decay; trunk and basal wounds; poor structure; spreading form; pruned with re-sprouting heading cuts; multiple attachments arise at the same point.
201	Persimmon	7,5,5,4,3	Yes	3	Moderate	Orchard tree; internal decay; trunk wounds; spreading form; pruned with re-sprouting heading cuts; multiple attachments arise at the same point with fused stems.
202	Persimmon	8,6,6,6,5	Yes	2	Low	Orchard tree; internal decay; trunk wounds; spreading form; pruned with re-sprouting heading cuts; multiple attachments arise at the same point with fused stems; overgrown with poor structure.
203	Persimmon	11,9,8	Yes	3	Moderate	Orchard tree; internal decay; trunk wounds; spreading form; pruned with re-sprouting heading cuts; codominant form.
204	Persimmon	6,4,4,4,3,3	Yes	2	Low	Orchard tree; internal decay; trunk wounds; spreading form; pruned with re-sprouting heading cuts; multiple attachments arise at the same point with fused stems; overgrown with poor structure.
205	Plum	1,1,1,1,1,1	No	4	High	Good young orchard tree.
206	Pear	3,3,2,2,2	Yes	3	Moderate	Multiple attachments arise at base; vigorous, upright and compact crown.

207	Plum	2,2,2,1,1,1	No	3	Moderate	Multiple attachments arise at base; shrubby and unmaintained; dieback.
208	Almond	5,3,2,2	Yes	3	Moderate	Multiple attachments arise at base; shrubby and unmaintained; dieback and internal decay.
209	Persimmon	9,2	No	3	Moderate	Orchard tree; internal decay; trunk wounds; spreading form; pruned with re-sprouting heading cuts; good form.
210	Cherry	4,4,4,3,2	Yes	4	High	Orchard tree with vigorous growth and spreading form; codominant form.
211	Pear	4,4,3,3,3,2,2	Yes	3	Moderate	Orchard tree with spreading form and vigorous growth; unmaintained and shrubby.
212	Cherry	3,3,3,2,2,2	Yes	4	High	Orchard tree with vigorous growth and spreading form; multiple attachments arise at the same point with included bark.
213	Pear	4,4,4,3,2,2,2	Yes	2	Low	Orchard tree; fused at base with Glossy privet; severe trunk wounding.
214	Glossy privet	3,3,3,3,2,2	Yes	3	Low	Orchard tree; fused at base with pear; upright form with vigorous growth.
215	Pear	4,4,4,4,3,3,3,2	Yes	3	Moderate	Multiple attachments arise at the base; vigorous upright crown.
216	Avocado	7,4,3	Yes	4	High	Multiple attachments arise at the base; vigorous spreading crown; slight lean; orchard tree.
217	Avocado	6,6,4,4	Yes	4	High	Codominant form; vigorous spreading crown; orchard tree.
218	Avocado	7	No	3	Moderate	Codominant form; trunk wound, slightly suppressed; vigorous spreading crown; orchard tree.
219	Avocado	7,5,4	Yes	3	Moderate	Codominant form; trunk wound, slightly suppressed; leans; spreading crown; orchard tree; trunk wound.
220	Avocado	7	No	3	Moderate	Codominant form with narrow attachment, trunk wound; vigorous spreading crown; orchard tree; stem failure at base.
221	Pear	3,2	No	2	Low	Orchard tree; severely damaged base and stems; one-sided crown.
222	Banana	3,3,3	No	2	Low	Clump of 3 banana trees engulfed in large blackberry vine mass; inaccessible.
223	Pear	4,4,3	No	2	Low	Overgrown orchard tree engulfed in large blackberry vine mass; inaccessible and base not visible.
224	Pear	5	No	2	Low	Unmaintained orchard tree engulfed in large raspberry vine mass; inaccessible and base not visible.
225	Loquat	6,5,4,3,3	Yes	3	Moderate	Orchard tree with multiple attachments that arise at the base; vigorous spreading crown; decay at base.
226	Glossy privet	1,1,1,1,1	No	3	Low	Vigorous upright and compact volunteer.
227	Pecan	18	Yes	2	Low	Orchard tree with poor structure and signs of internal decay and past failures.
228	Avocado	1	No	3	Moderate	Good young tree with leggy form.
229	Pear	7,5,4,3,3	Yes	2	Low	Dieback and past failures; internal decay; upright form with multiple attachments that arise at the same point.
230	California black walnut	15	Yes	2	Low	Adjacent to and embedded in shed, upright spreading form; codominant form.
231	Siberian elm	12,12,8	Yes	2	Low	Significant dieback; past failures; spreading dense overgrown crown with epicormic growth.
232	Siberian elm	13,8,8,6,6,6	Yes	2	Low	Significant dieback; past failures; spreading overgrown dense crown with epicormic growth.
233	European hackberry	33	Yes	4	High	Large spreading crown; overhangs property line; multiple attachments arise at 4' with fused stems; minor crown dieback.
234	Persimmon	9,5,3,3,3	Yes	1	Low	All but dead, extensive internal decay.
235	Fig	3,3,3,3	Yes	2	Low	Past failures and re-sprouting, extensive internal decay.
236	Persimmon	8,7	Yes	2	Low	Engulfed in blackberry vine; unmaintained and overgrown; multiple attachments arise at the same point; spreading crown.
237	Cherry	11,9,9,6	Yes	1	Low	Topped with extensive internal decay; one sided crown.
238	Cherry	6,4,1,1,1	Yes	1	Low	Headed back with extensive internal decay and dieback.
239	Cherry	4,3,3,3,2,2,2	Yes	1	Low	Headed with extensive internal decay and dieback.
240	Cherry	11	No	2	Low	Leans and is engulfed in ivy; large spreading crown.
241	Siberian elm	4,3,2	No	1	Low	All but dead; upright codominant form.
242	Orange	4,3,3,3,2,2,2	Yes	2	Low	Suppressed in dense thicket of mixed vegetation; engulfed in vines.
243	Coast live oak	6	No	3	Moderate	Suppressed in dense thicket of mixed vegetation; engulfed in vines; leans; one sided crown.
244	Cherry	4	No	2	Low	Suppressed in dense thicket of mixed vegetation; engulfed in vines; leans.
245	Holly oak	8,6,5,5,5,3,3	Yes	3	Moderate	Suppressed in dense thicket of mixed vegetation; engulfed in vines; leans.
246	Holly oak	8,5,3,3	Yes	1	Low	All but dead; extensive internal decay.

247	Cherry	4,4,4,4,3	Yes	3	Moderate	Past stem failures; decay in trunk and branches; spreading crown; multiple attachments arise at base.
248	California black walnut	3	No	2	Low	Re-sprouting root stock; vigorous; leans.
249	Chinese pistache	9	No	2	Low	Adjacent to house; leans away from house with one sided crown; codominant form.
250	Avocado	2	No	2	Low	Adjacent to house; leggy form with dieback.
251	Plum	8	No	2	Low	Adjacent to house; leans away from house with one sided crown; codominant form; internal decay
252	Orange	4,4,4,3,3,3,2	Yes	4	High	Multiple attachments arise at base; vigorous upright crown; minor dieback.
253	Plum	3,2,2,2	No	2	Low	Multiple attachments arise at base; headed back with decaying wounds; crown dieback; adjacent to house.
254	Plum	2,1	No	1	Low	All but dead adjacent to house; multiple attachments arise at base.
255	Avocado	5,4	No	4	High	Upright vigorous form adjacent to house; codominant form.
256	Heavenly bamboo	1,1,1,1,1,1,1,1,1,1,1,1,1	Yes	3	Moderate	Shrubby; adjacent to house; overgrown with dieback; multiple attachments arise at base.
257	Tangerine	1,1,1	No	3	Moderate	Adjacent to house; slightly thin and suppressed; codominant form.
258	Orange	1,1,1	No	3	Moderate	Adjacent to house; slightly thin and suppressed; multiple attachments arise at base.
259	Glossy privet	8,7	Yes	3	Low	Upright vigorous growth; lower trunk engulfed in ivy; past failures; codominant form.
260	Orange	9,6,4,4,3	Yes	3	Moderate	Adjacent to house; slightly thin and suppressed; multiple attachments arise at base; engulfed in ivy.
261	Pomegranate	7,7,5,4,3	Yes	3	Low	Partial failures at base; spreading crown; lower trunk engulfed in ivy; decay in base and stems; vigorous.
262	Lemon	2	No	2	Low	Trunk bowed over; engulfed in ivy.
263	Cabbage palm	10,8,8,6,6,4,4,4,4,3,3,3	Yes	3	Moderate	Dense clump surrounded by other vegetation; vigorous.
264	Avocado	1	No	2	Low	Leggy suppressed form.
265	Avocado	2,2,2	No	3	Moderate	Leggy suppressed form adjacent to building; low live crown.
266	California black walnut	21,20	Yes	3	Moderate	Over mature tree with large fused stems arising at 3'; hollow trunk with internal decay; past failures and decay in crown.
267	California black walnut	18	Yes	3	Moderate	Lower trunk engulfed in ivy; large spreading crown; multiple attachments arise at base.
268	Glossy privet	7,6,6	Yes	3	Low	Lower trunk engulfed in ivy; low live crown; vigorous growth at top of crown; multiple attachments arise at base.
269	Glossy privet	8,7,6,2	Yes	1	Low	All but dead.
270	Glossy privet	9	No	3	Low	Engulfed in ivy; low live crown; vigorous upper crown.
271	Fig	6,6	Yes	3	Low	Engulfed in ivy; low live crown ratio; codominant form.
272	Fig	8,6,3,2	Yes	3	Moderate	Good upright form; some decay in crown.
273	Fig	12	Yes	2	Low	Previously topped at 8'; past failures and internal decay at topping point.
274	Avocado	6,1	No	3	Moderate	Vigorous growth; leggy form adjacent to house.
275	Avocado	12,9	Yes	3	Moderate	Vigorous growth; leggy form adjacent to house; codominant at 4'.
276	Fig	8,7,4	Yes	3	Moderate	Adjacent to shed; vigorous growth with upright form.
277	Almond	10	No	3	Moderate	Adjacent to shed; vigorous growth with upright form; decayed pruning wound.
278	Chestnut	15,8	Yes	3	Moderate	Codominant at 1'; large spreading crown; vigorous growth.
279	Cherry	8,6,3	Yes	2	Low	Multiple attachments arise at base; partial failure at base; basal wound.
280	Glossy privet	10,10	Yes	3	Moderate	Dieback in lower crown; shrubby and overgrown.
281	Glossy privet	1,1	No	2	Low	Suppressed with leggy form.
282	Chestnut	2,2	No	2	Low	Multiple attachments arise at base; unmaintained shrubby form.
283	Chestnut	20	Yes	3	Moderate	Trunk bows and corrects; many past failures with deadwood in crown; codominant form.
284	Chestnut	12,9,8,6	Yes	3	Moderate	Multiple attachments arise at base; dense overgrown lower trunk; suppressed and leans.
285	Glossy privet	1,1,1,1,1,1,1,1,1,1,1,1	Yes	2	Low	Clump of Glossy privets established around dead orchard tree; multiple attachments arise at ground level shrubby; thin crown.
286	Glossy privet	3,3,2,2,2,2,1,1,1,1,1,1	Yes	3	Low	Clump of Glossy privets established around dead orchard tree; multiple attachments arise at ground level; shrubby vigorous growth.
287	Plum	6,6,4,3,2	Yes	2	Low	Decayed and declining orchard tree adjacent to Glossy privet.
288	Chestnut	6,5,4,2,2	Yes	3	Moderate	Orchard tree; upright form; codominant form at base; vigorous growth; one stem is dead.
289	Almond	6,6,4,4,3,3	Yes	1	Low	All but dead; engulfed in ivy.

290	Almond	6,6,4	Yes	2	Low	Extensive decay in trunks and stems; adjacent to Glossy privet.
291	Glossy privet	3,3,3,3,2,2,1	Yes	2	Low	Thin upright volunteer adjacent to orchard tree.
292	Glossy privet	2,2,1	No	2	Low	Thin upright volunteer adjacent to orchard tree.
293	Glossy privet	7,6,3,3,3,3,3,3,3,3,2,2,2,2,2,2,2,2	Yes	2	Low	Thin upright volunteer adjacent to orchard tree.
294	Glossy privet	2,2,2,2,1,1,1,1,1,1	Yes	2	Low	Thin upright leggy volunteer adjacent to orchard tree.
295	Glossy privet	4,3,3,2,2,2,2,2,1,1,1,1,1,1,1,1	Yes	2	Low	Thin upright leggy volunteer adjacent to orchard tree; dense clump.
296	Glossy privet	3,3,3,2,2,2,2,2,1,1,1,1,1,1	Yes	2	Low	Thin upright leggy volunteer adjacent to dead orchard tree; dense clump.
297	Avocado	1,1,1,1,1	No	3	Low	Vigorous, shrubby re-sprouting stems arising from cut stump.
298	Almond	7,6,6,6,5,5,4,4,4,2,2,2	Yes	3	Moderate	Partial failure at base; dense crown; low branching; vigorous; splitting crack in southern stem.
299	Almond	4,3,3	No	2	Low	Orchard tree; basal wound; internal and crown decay; codominant form.
300	Almond	1,1,1,1,1,1,1,1,1	No	2	Low	Orchard tree; basal wound; internal and branch decay; re-sprouting pruning cuts; codominant form.
301	Chestnut	18,12,8	Yes	3	Moderate	Along dirt road, codominant at 3'; spreading crown; resprouting.
302	Fig	1	No	3	Moderate	Good young fruit tree in field.
303	Fig	1	No	3	Moderate	Good young fruit tree in field; multiple attachments arise at base; vigorous.
304	Orange	1,1,1,1,1	No	3	Moderate	Good young fruit tree in field; multiple attachments arise at 1'; vigorous.
305	Fig	2,2,2	No	3	Moderate	Good young fruit tree in field; multiple attachments arise at 3'; vigorous.
306	Chestnut	14,12,10,10,8,7,6	Yes	3	Moderate	Spreading form; headed back; poor structure.
307	Apple	6,5,4,4	Yes	2	Low	Trunk wound on road side; multiple attachments arise at 3'; spreading crown with decayed pruning wounds.
308	Pear	3,2,2	No	2	Low	All but dead; topped; many re-sprouting stems.
309	Apple	2,2,2,2	No	3	Moderate	Good young fruit tree with spreading crown.
310	Apple	2,2,1,1,1	No	3	Moderate	Good young fruit tree with spreading crown.
311	Apple	1,1,1	No	3	Moderate	Good young fruit tree with vase shaped crown.
312	Chestnut	18	Yes	2	Low	Decay in trunk and pruning wounds; spreading form; adjacent to utility pole; poor structure.
313	Fig	8,6,4,3,3,2	Yes	2	Low	Multiple attachments arise at base; adjacent to shed; spreading crown.
314	Coast live oak	3,1	No	3	Moderate	Multiple attachments arise from the ground; leggy upright form.
315	Coast live oak	8,7,7,6,5,2,2	Yes	3	Low	Large spreading form; multiple attachments arise base; minor interior dieback; volunteer.
316	California black walnut	12,11	Yes	3	Moderate	Adjacent to shed; multiple attachments arise at 4'.
317	Glossy privet	3,2,1,1	No	3	Low	Tagged on #316; inaccessible and engulfed in blackberry vine.
318	Coast live oak	7,5,4	Yes	4	High	Upright dense form; vigorous; low branching.
319	California black walnut	6,5	No	4	High	Codominant at 1'; spreading low branching form; vigorous.
320	Coast live oak	11	No	4	High	Spreading vigorous form; multiple attachments arise at base.
321	Fig	4	No	4	High	Good upright form; vigorous; long lateral branches.
322	Fig	9	No	4	High	Good upright form; vigorous; long lateral branches.
323	Italian buckthorn	6,4,3	No	4	High	Vigorous shrubby form; dense low branching.
324	Italian buckthorn	10,8	Yes	4	High	Inaccessible; debris in front of tree tagged; upright form overhangs shed; multiple attachments arise at 5'.
325	Italian buckthorn	6,4,3,3,2,2,2	Yes	4	High	Vigorous shrubby form; dense low branching.
326	Olive	6,4,3,3,3,2,2	Yes	4	High	Vigorous shrubby form; dense low branching.
327	Mexican fan palm	30	Yes	3	Moderate	35' of brown trunk; live frond browning and speckling.
328	Tree of heaven	2	No	3	Moderate	Good upright form; slightly suppressed.
329	Holly oak	4,3,2	No	3	Moderate	Slightly one sided and suppressed; vigorous shrubby growth.
330	Coast live oak	13,11	Yes	4	High	Large spreading crown; codominant at 4'.
331	Coast live oak	16,12	Yes	3	Moderate	Suppressed and leans; high thin crown.
333	Coast live oak	3	No	3	Moderate	Suppressed and leans; high thin crown.
334	Coast live oak	12,12,10,10,8,8	Yes	4	High	Stand-alone spreading vigorous tree; low branching.
335	Coast live oak	10,8,4	Yes	4	High	Multiple attachments arise at 4'; spreading vigorous crown; low branching.
336	Coast live oak	4	No	4	High	Slightly suppressed; upright form; slight trunk lean.

337	Coast live oak	20,18,17,16,6	Yes	4	High	Multiple attachments arise at buried base; spreading vigorous crown.
338	Tree of heaven	14	Yes	2	Low	Large spreading crown; trunk engulfed in ivy; low branching.
339	Coast live oak	4,3,3	No	4	High	At property edge; vigorous shrubby form; growing through fence.
340	Tree of heaven	1	No	4	High	Good young tree volunteer, upright form.
341	Coast live oak	18	Yes	4	High	Low branching; dense spreading crown; multiple attachments arise at 6'.
342	California black walnut	12,6,4,4,4	Yes	1	Low	Engulfed in ivy; all but dead; multiple attachments arise at base.
343	California black walnut	3,2,2,2,1,1,1,1,1	Yes	3	Moderate	Multiple attachments arise at base; half of crown leans and is suppressed; volunteer.
344	Tree of heaven	5,1	No	3	Moderate	Good upright form; codominant at base.
345	Tree of heaven	4,3	No	3	Moderate	Good upright form; codominant at 3.5'.
346	Tree of heaven	3	No	3	Moderate	Good upright form.
347	Tree of heaven	4	No	3	Moderate	Good upright form; low branching.
348	Tree of heaven	1	No	3	Moderate	Inaccessible below bee hive; good upright form.
349	Cherry	6	No	2	Low	Dead.
350	Deodar cedar	36	Yes	2	Low	Large spreading crown; low branching; previously topped; heavy partial failures in crown.
351	Cherry	7,7,7,6,6,6,4,4,4,3,3,3,2	Yes	2	Low	Dense and overgrown with sprouting; multiple attachments arise at base; previous failures with decay.
352	Plum	4,3,3,2,2,2,1	Yes	2	Low	Growing around farm equipment; multiple attachments arise at 1'; dense overgrown shrubby form.
353	Plum	1,1,1,1,1,1	No	3	Moderate	Multiple attachments arise at base; spreading crown; many stems.
354	California black walnut	12,8,8,6,6,6,4,3,2,2,1	Yes	2	Low	Overgrown spreading low branching crown; moderate dieback; embedded in wooden fence.
355	Orange	7,6,4	Yes	3	Moderate	Decay in trunk; spreading crown; multiple attachments arise at 3'.
356	California black walnut	17	Yes	3	Moderate	Large spreading crown over shed; multiple attachments arise at 8'; moderate dieback.
357	Coast live oak	14	Yes	1	Low	Dead and adjacent to house.
358	California black walnut	24,18,16	Yes	3	Moderate	In front yard of house; spreading crown; codominant at 4'.
359	Chestnut	12	Yes	3	Moderate	In front yard of house; spreading crown; multiple attachments arise at 10'; one sided slightly suppressed crown; minor dieback.
360	Evergreen ash	18,18,16,14,12	Yes	3	Moderate	In front yard of house; spreading crown; multiple attachments arise at 3'; large spreading crown; minor dieback.
361	Glossy privet	6,6,4,4,3,2,2,2	Yes	3	Low	Dense and overgrown; multiple attachments arise at base; upright form.
362	Bottlebrush	6,6,6,4,4,4,3,3	Yes	2	Low	Dense and overgrown; multiple attachments arise at base; leans significantly south; moderate dieback.
363	Coast live oak	4,4,3	No	2	Low	Base of tree sweeps up from below car; dense vigorous shrubby growth.
364	Almond	3,3,3,3,3	Yes	3	Moderate	In field surround by debris; multiple attachments arise from the ground; upright form.
365	Almond	3,3,3,2,2,2,2	Yes	3	Moderate	In field surround by debris; multiple attachments arise from stump at 1'; upright stems.
366	Holly oak	8,1,1,1	No	3	Low	Dense shrubby growth; multiple attachments arise at base; topped.
367	Tree of heaven	1,1,1,1,1,1,1,1,1	No	3	Low	Multiple attachments arise at base; upright leggy stems.
368	Glossy privet	4,4,4,3,3,3,3,2,2,2,2	Yes	3	Low	Large dense upright crown; low branching; multiple attachments arise at base; minor dieback.
369	Apple	4	No	3	Moderate	Suppressed and leans; good branching structure.
370	Apple	4	No	3	Moderate	Suppressed and leans; good branching structure.
371	European hackberry	12,12,12,6	Yes	3	Moderate	Large spreading crown; multiple attachments arise at base; minor dieback.
372	Plum	1,1,1,1,1	No	2	Low	Growing from below tank; shrubby upright growth.
373	Apple	5	No	3	Moderate	Good upright form; long lateral branches.
374	Almond	1,1,1,1,1	No	3	Moderate	Multiple attachments arise at base; shrubby form.
375	Coast live oak	2,1	No	3	Moderate	Shrubby volunteer with trunk between irrigation pipes.
376	Tree of heaven	4,3,3,3,3,2	Yes	3	Low	Volunteer; many leggy stems arise from the ground.
377	Glossy privet	4,3,3,3,3,2	Yes	3	Low	Volunteer; many leggy stems arise from the ground; vigorous.
378	Glossy privet	1,1,1,1,1	No	3	Low	Volunteer; many leggy stems arise from the ground; vigorous.
379	Tree of heaven	14,10,10,10,8,8,7,2	Yes	3	Low	Volunteer; many leggy stems arise from the ground; vigorous and spreading crown.
380	Tree of heaven	8,6,6,6,4,4,3	Yes	3	Low	Volunteer; many leggy stems arise from the ground; vigorous.
381	Tree of heaven	10,10,8,8,8,6,6,5,4	Yes	3	Low	Volunteer; many leggy stems arise from the ground; vigorous.
382	Tree of heaven	3,2,2,2	No	3	Low	Volunteer; many leggy stems arise from the ground; vigorous.

383	Tree of heaven	6,4,4,4,3,3,3	Yes	3	Moderate	Multiple attachments arise at base; low branching and spreading crown; good vigor.
384	Coast live oak	3	No	3	Moderate	Suppressed and leans slightly; leggy form.
385	California black walnut	18,17	Yes	2	Low	At edge of property; topped beneath overhead lines with decay; codominant at 3'; spreading crown.
386	California black walnut	4	No	4	High	Good young tree; codominant at 4'.
387	California black walnut	11,11,8,8,6	Yes	2	Low	Decay in base and trunk; multiple attachments arise at 1'; spreading crown.
388	California black walnut	12,12,10,10	Yes	3	Moderate	Multiple attachments arise at base; spreading crown adjacent to utility pole.
389	Mexican fan palm	14	Yes	3	Moderate	8' of brown trunk; vigorous growth.
390	Fig	10,9	Yes	3	Moderate	In field; stems cross and are fused; past heading cuts; resprouting.
391	Loquat	2,2,1	No	3	Moderate	Multiple attachments arise at 3'; rounded crown; trunk damage.

Tree Assessment

Vacant lot adjacent to 681 East Trimble Road
San Jose, CA
September 2021



Tree No.	Species	Trunk Diameter (in.)	Ordinance-Sized Tree?	Condition 1=poor 5=excellent	Suitability for Preservation	Comments
401	Mexican fan palm	17	Yes	4	Low	Vigorous unmaintained volunteer growing 1' from power pole.
402	Glossy privet	4,3,2,2	No	3	Moderate	Off-site and overhanging; part of screening hedge along northern property line; dense; shrubby; multistem.
403	Oleander	4,4,4,3,3,3	Yes	4	Moderate	Off-site and overhanging; part of screening hedge along northern property line; dense; shrubby; multistem; vigorous.
404	Oleander	4,4,3,3,3,3,3	Yes	4	Moderate	Off-site and overhanging; part of screening hedge along northern property line; dense; shrubby; multistem; vigorous.
405	Oleander	4,4,4,3,3,3	Yes	4	Moderate	Off-site and overhanging; part of screening hedge along northern property line; dense; shrubby; multistem; vigorous.
406	Holly oak	10,8	Yes	4	High	Part of screening hedge along northern property line; dense; shrubby; multiple stems arise at 1; vigorous; one sided crown; low branching.
407	Olive	6	No	4	Moderate	Off-site and overhanging; part of screening hedge along northern property line; dense; shrubby; vigorous.
408	Oleander	4,4,4,3,3,3	Yes	4	Moderate	Off-site and overhanging; part of screening hedge along northern property line; dense; shrubby; multistem; vigorous.
409	Oleander	3,3,3,3,3,3	Yes	4	Moderate	Off-site and overhanging; part of screening hedge along northern property line; dense; shrubby; multistem; vigorous.
410	Oleander	4,3,3,3,3,3	Yes	4	Moderate	Off-site and overhanging; part of screening hedge along northern property line; dense; shrubby; multistem; vigorous.
411	Oleander	3,3,3,3,3,3	Yes	4	Moderate	Off-site and overhanging; part of screening hedge along northern property line; dense; shrubby; multistem; vigorous.
412	Oleander	4,3,3,3,3,3	Yes	4	Moderate	Off-site and overhanging; part of screening hedge along northern property line; dense; shrubby; multistem; vigorous.
413	Oleander	3,3,3,3,3,3	Yes	4	Moderate	Off-site and overhanging; part of screening hedge along northern property line; dense; shrubby; multistem; vigorous.
414	Oleander	3,2,2,2,2,2	Yes	4	Moderate	Off-site and overhanging; part of screening hedge along northern property line; dense; shrubby; multistem; vigorous.
415	Oleander	3,3,2,2,2,2,2	Yes	4	Moderate	Off-site and overhanging; part of screening hedge along northern property line; dense; shrubby; multistem; vigorous.

Tree Assessment

Vacant lot adjacent to 681 East Trimble Road
San Jose, CA
September 2021



Tree No.	Species	Trunk Diameter (in.)	Ordinance-Sized Tree?	Condition 1=poor 5=excellent	Suitability for Preservation	Comments
416	Raywood ash	9	No	2	Low	Off-site and overhanging; part of screening hedge along northern property line; all but dead; severe dieback.
417	Oleander	3,2,2	No	4	Moderate	Off-site and overhanging; part of screening hedge along northern property line; dense; shrubby; multistem; vigorous.
418	Oleander	3,3,2,2	No	4	Moderate	Off-site and overhanging; part of screening hedge along northern property line; dense; shrubby; multistem; vigorous.
419	Holly oak	4	No	4	High	Off-site and overhanging; part of screening hedge along northern property line; dense crown; vigorous.
420	Oleander	2,1,1,1,1,1	No	4	Moderate	Off-site and overhanging; part of screening hedge along northern property line; dense; shrubby; multistem; vigorous.
421	Oleander	3,1,1,1,1,1	No	4	Moderate	Off-site and overhanging; part of screening hedge along northern property line; dense; shrubby; multistem; vigorous.
422	Oleander	4,3,2,2,2,2	Yes	4	Moderate	Off-site and overhanging; part of screening hedge along northern property line; dense; shrubby; multistem; vigorous.
423	Oleander	4,3,2,2,2,2	Yes	4	Moderate	Off-site and overhanging; part of screening hedge along northern property line; dense; shrubby; multistem; vigorous.
424	Southern live oak	3,3	No	3	Moderate	Off-site and overhanging; part of screening hedge along northern property line; dense; shrubby; multistem; vigorous; growing through fence.
425	Raywood ash	14	Yes	No Value	No Value	Off-site; stump.
426	Oleander	4,3,2,2,2,2	Yes	4	Moderate	Off-site and overhanging; part of screening hedge along northern property line; dense; shrubby; multistem; vigorous.
427	Oleander	3,2,2,2,2,2	Yes	4	Moderate	Off-site and overhanging; part of screening hedge along northern property line; dense; shrubby; multistem; vigorous.
428	Oleander	4,4,3,3,2,2	Yes	4	Moderate	Off-site and overhanging; part of screening hedge along northern property line; dense; shrubby; multistem; vigorous.
429	Oleander	3,2,2,2,2,2	Yes	4	Moderate	Off-site and overhanging; part of screening hedge along northern property line; dense; shrubby; multistem; vigorous.
430	Oleander	2,1,1,1,1,1	Yes	4	Moderate	Off-site and overhanging; part of screening hedge along northern property line; dense; shrubby; multistem; vigorous.

Tree Assessment

Vacant lot adjacent to 681 East Trimble Road
San Jose, CA
September 2021



Tree No.	Species	Trunk Diameter (in.)	Ordinance-Sized Tree?	Condition 1=poor 5=excellent	Suitability for Preservation	Comments
431	Oleander	3,3,2,2,1,1	Yes	4	Moderate	Off-site and overhanging; part of screening hedge along northern property line; dense; shrubby; multistem; vigorous.
432	Italian buckthorn	3,3,2,2,1,1	Yes	3	Moderate	On-site; part of screening hedge along northern property line; dense; shrubby; multistem.
433	Raywood ash	16	Yes	3	Moderate	Off-site and overhanging; part of screening hedge along northern property line; dense crown; moderate dieback.
434	Oleander	3,2,2,1,1,1	No	4	Moderate	Off-site and overhanging; part of screening hedge along northern property line; dense; shrubby; multistem; vigorous.
435	Raywood ash	13	Yes	2	Low	Off-site and overhanging; part of screening hedge along northern property line; severe dieback.
436	Oleander	4,4,3,3,2,2	Yes	4	Moderate	Off-site and overhanging; part of screening hedge along northern property line; dense; shrubby; multistem; vigorous.
437	Oleander	5,4,4,3,3,2	Yes	4	Moderate	Off-site and overhanging; part of screening hedge along northern property line; dense; shrubby; multistem; vigorous.
438	Italian buckthorn	5,4,3	Yes	3	Moderate	Off-site; part of screening hedge along northern property line; dense; shrubby; moderate dieback in upper crown; multistem.
439	Italian buckthorn	3	No	3	Moderate	Off-site; part of screening hedge along northern property line; dense; shrubby; moderate dieback in upper crown.
440	California black walnut	4	No	No Value	No Value	Off-site; part of screening hedge along northern property line; dead.
441	Italian buckthorn	5	No	3	Moderate	Off-site; part of screening hedge along northern property line; dense; shrubby.
442	Elderberry	8,7,6,5	Yes	4	Moderate	Off-site and overhanging; part of screening hedge along northern property line; dense; shrubby; multistem; vigorous.
443	Coast live oak	20,11	Yes	4	High	On-site along fence line; dense vigorous crown with minor twig dieback; multiple attachments arise at 4'; low branching; spreading crown.
444	Oleander	4,3,2,2,2,3	Yes	4	Moderate	Off-site and overhanging; part of screening hedge along northern property line; dense; shrubby; multistem; vigorous.

Tree Assessment

Vacant lot adjacent to 681 East Trimble Road
 San Jose, CA
 September 2021



Tree No.	Species	Trunk Diameter (in.)	Ordinance-Sized Tree?	Condition 1=poor 5=excellent	Suitability for Preservation	Comments
445	Oleander	3,2,2,2,2,2	Yes	4	Moderate	Off-site and overhanging; part of screening hedge along northern property line; dense; shrubby; multistem; vigorous.
446	Oleander	3,2,2,2,2,2	Yes	4	Moderate	Off-site and overhanging; part of screening hedge along northern property line; dense; shrubby; multistem; vigorous.
447	Oleander	3,3,2,2,2,2	Yes	4	Moderate	Off-site and overhanging; part of screening hedge along northern property line; dense; shrubby; multistem; vigorous.
448	Oleander	4,3,2,2,2,2	Yes	4	Moderate	Off-site and overhanging; part of screening hedge along northern property line; dense; shrubby; multistem; vigorous.
449	Oleander	1,1,1,1,1,1	No	4	Moderate	Off-site and overhanging; part of screening hedge along northern property line; dense; shrubby; multistem; vigorous.
450	Italian buckthorn	4	No	3	Moderate	Off-site and overhanging; part of screening hedge along northern property line; dense; shrubby.
451	Italian buckthorn	4,3,3,2,2	Yes	3	Moderate	Off-site and overhanging; part of screening hedge along northern property line; dense; shrubby; multistem.
452	Oleander	3,3,2,2,1,1	Yes	4	Moderate	Off-site and overhanging; part of screening hedge along northern property line; dense; shrubby; multistem; vigorous.
453	Italian buckthorn	3	No	3	Moderate	On-site; part of screening hedge along northern property line; dense; shrubby; minor dieback.
454	Oleander	4,3,3,3,2,2	Yes	4	Moderate	Off-site and overhanging; part of screening hedge along northern property line; dense; shrubby; multistem; vigorous.
455	Coast live oak	4	No	4	Moderate	Off-site and overhanging; part of screening hedge along northern property line; dense; shrubby.
456	Italian buckthorn	3,1	No	3	Moderate	On-site; part of screening hedge along northern property line; dense; shrubby; minor dieback.
457	Oleander	4,3,3,2,2,1	Yes	3	Moderate	Off-site; part of screening hedge along northern property line; dense; shrubby; vigorous.
458	Arizona ash	14,12,8,6	Yes	4	Moderate	Off-site and overhanging; part of screening hedge along northern property line; dense; shrubby; multistem; vigorous.
459	Oleander	3,3,3,3,3,3	Yes	4	Moderate	Off-site; part of screening hedge along northern property line; dense; shrubby; minor dieback.

Tree Assessment

Vacant lot adjacent to 681 East Trimble Road
San Jose, CA
September 2021



Tree No.	Species	Trunk Diameter (in.)	Ordinance-Sized Tree?	Condition 1=poor 5=excellent	Suitability for Preservation	Comments
460	Oleander	3,3,3,2,2,2	Yes	4	Moderate	Off-site; part of screening hedge along northern property line; dense; shrubby; vigorous.
461	Oleander	2,1,1,1,1,1	No	4	Moderate	Off-site; part of screening hedge along northern property line; dense; shrubby; vigorous.
462	Italian buckthorn	4,4,3,3	No	3	Moderate	Off-site; part of screening hedge along northern property line; dense; shrubby.
463	Arizona ash	5,5,4	Yes	3	Moderate	Off-site; part of screening hedge along northern property line; dense; shrubby; vigorous.
464	Italian buckthorn	2,1	No	3	Moderate	On-site; part of screening hedge along northern property line; dense; shrubby.
465	Oleander	3,3,3,2,2,2	Yes	4	Moderate	Off-site; part of screening hedge along northern property line; dense; shrubby; vigorous.
466	Italian buckthorn	6,4,3	Yes	2	Low	On-site; part of screening hedge along northern property line; dense; shrubby; severe dieback.
467	Italian buckthorn	3,3,3,3,2,2	Yes	2	Low	Off-site; part of screening hedge along northern property line; dense; shrubby; severe dieback.
468	Oleander	2,2,2,1,1,1	No	4	Moderate	Off-site; part of screening hedge along northern property line; dense; shrubby; vigorous; multistem.
469	Oleander	3,3,3,2,2,2	Yes	4	Moderate	Off-site; part of screening hedge along northern property line; dense; shrubby; vigorous; multistem.
470	Coast redwood	9	No	4	High	Offsite and overhanging; typical form and structure; vigorous.
471	Coast live oak	2,2	No	4	Moderate	Offsite and overhanging; typical form and structure; vigorous; volunteer.
472	Raywood ash	16	Yes	3	Moderate	Offsite and overhanging; typical form and structure; minor dieback.
473	Oleander	2,1,1,1,1,1	No	4	Moderate	Off-site; part of screening hedge along northern property line; dense; shrubby; vigorous; multistem.
474	Oleander	3,2,2,1,1,1,1	No	2	Low	Off-site; part of screening hedge along northern property line; shrubby; thin crown with dieback; multistem.
475	Italian buckthorn	5	No	No Value	No Value	Off-site and dead.

Tree Assessment

Vacant lot adjacent to 681 East Trimble Road
San Jose, CA
September 2021



Tree No.	Species	Trunk Diameter (in.)	Ordinance-Sized Tree?	Condition 1=poor 5=excellent	Suitability for Preservation	Comments
476	Oleander	2,2,2,1,1,1	No	2	Low	Off-site; part of screening hedge along northern property line; thin crown with dieback; shrubby; multistem.
477	Glossy privet	5,4,4,3	Yes	2	Low	On-site; trunk engulfed in ivy; thin crown with dieback.
478	Holly oak	6,4	No	4	High	On-site; shrubby; multistem; vigorous.
479	Raywood ash	3	No	4	High	On property line; shrubby vigorous volunteer.
480	Holly oak	5	No	4	High	On-site; shrubby; vigorous.
481	Italian buckthorn	4	No	4	Moderate	Off-site; part of screening hedge along northern property line; dense; shrubby; vigorous.
482	Oleander	1,1,1,1,1,1	No	4	Moderate	Off-site; part of screening hedge along northern property line; dense; shrubby; vigorous.
483	Southern live oak	6	No	4	Moderate	Off-site; part of screening hedge along northern property line; dense; shrubby; vigorous.
484	Oleander	4,4,3,3,2,2	Yes	4	Moderate	Off-site; part of screening hedge along northern property line; dense; shrubby; vigorous.
485	Oleander	3,3,3,2,2,2	Yes	4	Moderate	Off-site; part of screening hedge along northern property line; dense; shrubby; vigorous.
486	Oleander	4,1,1,1,1,1	No	4	Moderate	Off-site; part of screening hedge along northern property line; dense; shrubby; vigorous.
487	Brazilian pepper	3,3,2,2,1,1	Yes	4	Moderate	Off-site; part of screening hedge along northern property line; dense; shrubby; vigorous.
488	Italian buckthorn	4,4,3,3,2,2	No	3	Moderate	Off-site; part of screening hedge along northern property line; dense; shrubby; vigorous; minor dieback.
489	Oleander	3,2,2,2,2,2,1	Yes	4	Moderate	Off-site; part of screening hedge along northern property line; dense; shrubby; vigorous.
490	Purpleleaf plum	6	No	3	Moderate	Off-site; part of screening hedge along northern property line; vigorous crown.
491	Oleander	2,1,1,1,1,1	No	4	Moderate	Off-site; part of screening hedge along northern property line; dense; shrubby; vigorous.
492	Oleander	2,1,1,1,1,1	No	4	Moderate	Off-site; part of screening hedge along northern property line; dense; shrubby; vigorous.

Tree Assessment

Vacant lot adjacent to 681 East Trimble Road
San Jose, CA
September 2021



Tree No.	Species	Trunk Diameter (in.)	Ordinance-Sized Tree?	Condition 1=poor 5=excellent	Suitability for Preservation	Comments
493	Escallonia	1,1,1,1,1,1	No	4	Moderate	Off-site; part of screening hedge along northern property line; dense; shrubby; vigorous; engulfed in blackberry vine.
494	Coast live oak	2	No	3	Moderate	Off-site; part of screening hedge along northern property line; thin crown; suppressed; leggy.
495	Coast live oak	2,1,1	No	3	Moderate	Off-site; part of screening hedge along northern property line; shrubby; vigorous; multistem.
496	Raywood ash	12	Yes	2	Low	Off-site; part of screening hedge along northern property line; moderate dieback.
497	Escallonia	1,1,1,1,1,1	No	4	Moderate	Off-site; part of screening hedge along northern property line; dense; shrubby; vigorous.
498	Glossy privet	3,2,2,1	No	4	Moderate	Off-site; trunk embedded in fence; part of screening hedge along northern property line; dense; shrubby; vigorous.
499	Raywood ash	2	No	4	Moderate	On-site; part of screening hedge along northern property line; upright form; vigorous.
500	Coast live oak	2	No	4	Moderate	Off-site; part of screening hedge along northern property line; upright form; vigorous; growing through fence.
1164	California black walnut	1	No	4	Moderate	Volunteer along property line; vigorous; leans.
1165	California black walnut	3,3,2,2,1,1	Yes	4	Moderate	Volunteer in middle of field; vigorous and shrubby.
1166	California black walnut	4,4,4,4,2,2	Yes	4	Moderate	Volunteer in middle of field; vigorous and shrubby.
1167	California black walnut	5,5,5,4,4,4	Yes	4	Moderate	Volunteer in middle of field; vigorous and shrubby.
1168	Coast live oak	5	No	2	Low	Engulfed in poison oak and inaccessible; no tag.
1169	Elderberry	14,8,6	Yes	2	Low	Shrubby; in dense thicket clump of vegetation ; suppressed with dieback.
1170	Elderberry	9,8,8,8,8,7,7,6	Yes	2	Low	Shrubby; in dense thicket clump of vegetation; spreading crown; multiple attachments arise at base.
1171	Glossy privet	4,4,3,3,2,2	Yes	No Value	No Value	Dead; multiple attachments arise at base.

Tree Assessment

Vacant lot adjacent to 681 East Trimble Road
San Jose, CA
September 2021



Tree No.	Species	Trunk Diameter (in.)	Ordinance-Sized Tree?	Condition 1=poor 5=excellent	Suitability for Preservation	Comments
1172	Coast live oak	3,2,1	No	3	Moderate	Volunteer suppressed by adjacent tree; shrubby.
1173	Raywood ash	6,3	No	5	Moderate	Volunteer; upright form; vigorous crown.
1174	Coast live oak	5,4,4	Yes	4	Moderate	Volunteer; upright form; vigorous crown; multiple attachments arise at base.
1175	Chinese pistache	3	No	4	Moderate	Volunteer; shrubby spreading form; vigorous crown.
1176	Glossy privet	3,2,1	No	No Value	No Value	Dead.
1177	Elderberry	6,5,5,4,4,3	Yes	2	Low	Multiple attachments arise at base; spreading shrubby form; thin crown with dieback.
1178	Glossy privet	4,3,3,2,2	Yes	No Value	No Value	Dead.
1179	Pear	3,2,1,1,1	No	No Value	No Value	Dead.
1180	Pear	3,2,2,1,1,1	No	No Value	No Value	Dead.
1181	Pear	3,3,3,2,2,2	Yes	No Value	No Value	Dead.
1182	Coast live oak	12	Yes	5	High	Vigorous dense crown; upright form; volunteer.
1183	Pear	4,3,2,2,2,2	Yes	2	Low	Orchard tree; moderate dieback.
1184	Pear	2,2,2,2,2,2	Yes	No Value	No Value	Dead.
1185	Coast live oak	9	No	5	High	Vigorous dense crown; upright form; volunteer.
1186	Pear	3,2,2,1	No	No Value	No Value	Dead.
1187	Coast live oak	9	No	4	High	Vigorous dense crown; upright form; volunteer; healed 5' long wound on trunk.
1188	Pear	2,2,2,1,1,1	No	No Value	No Value	Dead.
1189	Olive	1,1,1,1,1,1	No	No Value	No Value	Dead.
1190	Pear	4,3	No	1	Low	All but dead.
1191	Pear	4,3	No	2	Low	Orchard tree; significant dieback.

Tree Assessment

Vacant lot adjacent to 681 East Trimble Road
San Jose, CA
September 2021



Tree No.	Species	Trunk Diameter (in.)	Ordinance-Sized Tree?	Condition 1=poor 5=excellent	Suitability for Preservation	Comments
1192	Pear	4,3,3,3,3	Yes	2	Low	Orchard tree; significant dieback.
1193	Coast live oak	6,5,4,3,3	Yes	4	High	Vigorous dense crown; shrubby form; volunteer.
1194	Coast live oak	4,4,3,3,2	Yes	4	High	Vigorous dense crown; shrubby form; volunteer.
1195	Coast live oak	16	Yes	4	High	Vigorous dense crown; shrubby form; volunteer.
1196	Pear	3,2	No	No Value	No Value	Dead.
1197	Coast live oak	6	No	4	High	Vigorous dense crown; upright form; volunteer; multiple attachments arise at 4'.
1198	Coast live oak	3	No	4	High	Vigorous dense crown; upright form; volunteer.
1199	Pear	3	No	No Value	No Value	Dead.
1200	Coast live oak	11	No	3	Moderate	Previously topped; vigorous upright crown.
1201	Coast live oak	13	Yes	3	Moderate	Previously topped; vigorous upright crown.
1202	Coast live oak	13	Yes	3	Moderate	Previously topped; vigorous upright crown; wounds along trunk and branches.
1203	Pear	3,3,2,2,2	Yes	No Value	No Value	Dead.
1204	Olive	1,1,1,1,1,1	No	2	Low	Significant dieback and low vigor; multistem and shrubby.
1205	Coast live oak	11	No	3	Moderate	Vigorous dense upright crown; previously topped.
1206	California black walnut	6,4,4,4	Yes	3	Moderate	Volunteer; spreading crown; vigorous growth.
1207	Pear	3,2,2,2	No	No Value	No Value	Dead.
1208	California black walnut	3,2,2,2	No	3	Moderate	Upright volunteer with damage along trunk.
1209	Coast live oak	4,3,3	No	4	High	Vigorous dense upright crown; multiple attachments arise at base.
1210	Pear	4,3,3,3,2,2	Yes	No Value	No Value	Dead.
1211	Pear	6,2,2,2,2,2	Yes	No Value	No Value	Dead.
1212	Coast live oak	6,5,3,3	Yes	4	High	On-site; vigorous upright crown.

Tree Assessment

Vacant lot adjacent to 681 East Trimble Road
San Jose, CA
September 2021



Tree No.	Species	Trunk Diameter (in.)	Ordinance-Sized Tree?	Condition 1=poor 5=excellent	Suitability for Preservation	Comments
1213	Arizona ash	3	No	2	Low	On-site; suppressed with leggy form.
1214	Arizona ash	8,7,7,6,6	Yes	3	Moderate	Off-site with overhang; thin crown with some dieback.
1215	Coast live oak	5	No	3	Moderate	On-site; high crown; slightly suppressed; upright leggy form.
1216	Coast live oak	16	Yes	2	Low	On-site; spreading crown with moderate dieback and decayed/dead branches; previously topped.
1217	Pear	2,1,1	No	No Value	No Value	Dead.
1218	Coast live oak	2,1,1	No	3	Moderate	Previously topped; upright form with a slightly thin crown.
1219	Raywood ash	3	No	3	Moderate	Thin crown; suppressed; upright form.
1220	Pear	5,4,4,3,3,2,2	Yes	No Value	No Value	Dead.
1221	Coast live oak	10	No	3	Moderate	Previously topped; dense vigorous upright crown.
1222	Pear	4,3,1,1,1	No	1	Low	All but dead.
1223	Pear	4,3,2,2,2	Yes	No Value	No Value	Dead.
1224	Pear	4,4,3,3,3	Yes	No Value	No Value	Dead.
1225	Coast live oak	16	Yes	5	High	Upright form; codominant at 12'; spreading vigorous crown.
1226	Pear	4,4,3,3,2,2	Yes	1	Low	All but dead.
1227	Raywood ash	9	No	4	Moderate	On-site; upright crown and good form and vigor.
1228	Pear	5,4,3,3,3	Yes	1	Low	All but dead.
1229	Pear	4,2,2	No	1	Low	All but dead.
1230	Pear	4,2,2	No	1	Low	Dead.
1231	Almond	4	No	No Value	No Value	Dead.
1232	Almond	1,1,1,1	No	1	Low	Significant dieback.
1233	Glossy privet	2,2,1,1,1	No	1	Low	Moderate dieback; shrubby volunteer.
1234	Coast live oak	5	No	4	High	Shrubby vigorous volunteer.
1235	Holly oak	1,1	No	4	High	Shrubby vigorous volunteer.
1236	Coast live oak	11	No	4	High	Vigorous upright volunteer; codominant at 7'.

Tree Assessment

Vacant lot adjacent to 681 East Trimble Road
San Jose, CA
September 2021



Tree No.	Species	Trunk Diameter (in.)	Ordinance-Sized Tree?	Condition 1=poor 5=excellent	Suitability for Preservation	Comments
1237	Glossy privet	3,3,2,1,1	No	1	Low	All but dead.
1238	Coast live oak	4,4,4,3,3,3	Yes	4	High	Shrubby vigorous volunteer.
1239	Coast live oak	1	No	3	Moderate	Shrubby vigorous volunteer; limited growing space; slightly suppressed.
1240	Coast live oak	12	Yes	4	High	Upright vigorous volunteer; low branching.
1241	Coast live oak	12	Yes	4	High	Previously topped; dense vigorous crown.
1242	Coast live oak	7	No	3	Moderate	Volunteer; slightly suppressed; shrubby.
1243	Pear	4,3,3,3	Yes	1	Low	All but dead.
1244	Pear	4,3,3,3,2	Yes	1	Low	All but dead.
1245	Coast live oak	4,4,4,3,3,2	Yes	4	High	Upright; vigorous crown; low branching.
1246	Pear	1,1,1	No	3	Moderate	Upright form; multiple attachments arise at base; good vigor; thin crown.
1247	Olive	2,2,1,1,1	No	3	Moderate	Shrubby; multistem; minor dieback; unmaintained.
1248	Coast live oak	2,1,1	No	4	High	Upright; vigorous crown; good young tree.
1249	Elderberry	5,3,2,2,2	Yes	2	Low	Thin crown with dieback; spreading shrubby crown.
1250	Tree of heaven	7,6,6,5	Yes	4	Moderate	Multiple attachments arise at base; vigorous spreading crown.
1251	Coast live oak	5,4	No	3	Moderate	Suppressed volunteer with a lean; vigorous crown.
1252	Pear	3,3,3,2	No	2	Low	Suppressed with high crown.
1253	Olive	4,2,1,1,1,1,1	No	3	Moderate	Shrubby multistem volunteer; spreading crown.
1254	Coast live oak	9,4,4	Yes	3	Moderate	Suppressed and leans; multiple attachments arise at 2'; upright form; vigorous crown.
1255	Almond	5,3,2	No	No Value	No Value	Dead.
1256	Almond	3,3,2,2,2	Yes	No Value	No Value	Dead.
1257	Holly oak	1,1,1,1	No	4	Moderate	Multistem shrubby volunteer.

Tree Assessment

Vacant lot adjacent to 681 East Trimble Road
San Jose, CA
September 2021



Tree No.	Species	Trunk Diameter (in.)	Ordinance-Sized Tree?	Condition 1=poor 5=excellent	Suitability for Preservation	Comments
1258	Glossy privet	5,4	No	No Value	No Value	Dead.
1259	Coast live oak	10	No	4	High	Vigorous upright crown; codominant at 6'.
1260	Olive	1,1,1,1	No	4	Moderate	Multistem and shrubby; vigorous growth.
1261	Pear	4,2,2,2,1,1	Yes	2	Low	Shrubby with moderate dieback.
1262	Coast live oak	7,6,4,4,3	Yes	2	Low	Shrubby; multiple attachments arise at base; vigorous crown.
1263	Coast live oak	5,3	No	4	High	Upright form; vigorous crown; slightly one sided.
1264	Pear	3,3,3,2,2,2	Yes	1	Low	All but dead.
1265	Pear	4,3,3,2,2	Yes	1	Low	All but dead.
1266	Coast live oak	1,1	No	4	Moderate	good young tree; limited growing space.
1267	Coast live oak	2,1,1	No	4	Moderate	good young tree; limited growing space.
1268	Coast live oak	20,13,12	Yes	4	High	Large vigorous specimen; spreading crown; multiple attachments arise at 2'.
1269	Coast live oak	6	No	4	Moderate	Good young tree; limited growing space.
1270	Coast live oak	3	No	4	Moderate	Good young tree; limited growing space.
1271	Coast live oak	3	No	4	Moderate	Good young tree; limited growing space.
1272	Raywood ash	3	No	3	Moderate	High crown; lanky form.
1273	Coast live oak	1,1	No	4	Moderate	Good young tree; limited growing space.
1274	Coast live oak	2	No	4	Moderate	Good young tree; limited growing space.
1275	Pear	2,1,1,1	No	1	Low	All but dead.
1276	Glossy privet	2,1	No	1	Low	All but dead.
1277	Coast live oak	2,1,1,1,1	No	4	Moderate	Good young tree; limited growing space.
1278	Coast live oak	6	No	4	High	Good young tree; shrubby form.
1279	Carolina cherry laurel	1,1,1,1,1,1	No	4	Moderate	Good young tree; shrubby form.
1280	Olive	4,3,2,2,1,1	Yes	4	Moderate	Shrubby; vigorous crown.

Tree Assessment

Vacant lot adjacent to 681 East Trimble Road
San Jose, CA
September 2021



Tree No.	Species	Trunk Diameter (in.)	Ordinance-Sized Tree?	Condition 1=poor 5=excellent	Suitability for Preservation	Comments
1281	Coast live oak	5,5	No	4	Moderate	Shrubby; vigorous crown; limited growing space.
1282	Olive	4,2,1,1,1	No	4	Moderate	Shrubby; vigorous crown.
1283	Olive	3,1,1,1,1,1	No	2	Low	Significant dieback; shrubby.
1284	Canyon live oak	1,1,1,1,1,1	No	4	Moderate	Shrubby vigorous volunteer.
1285	Chinese pistache	1,1,1	No	4	Low	Shrubby vigorous volunteer.
1286	Olive	4,3,3,3,3,3	Yes	3	Low	Leans and suppressed; vigorous crown.
1287	Olive	3,3,2,2,2	Yes	3	Moderate	Shrubby and one sided; vigorous crown.
1288	Glossy privet	4,4,3,3,2,2	Yes	No Value	No Value	Dead.
1289	Pear	8	No	1	Low	All but dead.
1290	Coast live oak	7	No	4	High	Upright and vigorous crown.
1291	Coast live oak	9,9	Yes	3	Moderate	Upright and vigorous crown; codominant at base; crossing stems.
1292	Holly oak	1,1,1,1,1,1	No	4	Moderate	good young tree; limited growing space.
1293	Coast live oak	1,1,1	No	4	Moderate	good young tree; limited growing space.
1294	Coast live oak	8,7	Yes	4	Moderate	Vigorous upright crown.
1295	Coast live oak	9,8,3,3	Yes	4	Moderate	Vigorous upright crown; multiple attachments arise at base.
1296	Pear	6	No	1	Low	All but dead.
1297	Holly oak	7,5	Yes	3	Moderate	Upright form; thin crown; minor dieback.
1298	Arizona ash	1	No	4	Low	good young tree; base 6" from fence.
1299	Arizona ash	3	No	4	Low	good young tree; base 6" from fence.
1300	Coast live oak	4,3,3,2,2	Yes	4	High	Vigorous upright crown; multiple attachments arise at base.
1301	Coast live oak	16	Yes	5	High	Vigorous crown; low branching; codominant at 6'.

Tree Assessment

Vacant lot adjacent to 681 East Trimble Road
San Jose, CA
September 2021



Tree No.	Species	Trunk Diameter (in.)	Ordinance-Sized Tree?	Condition 1=poor 5=excellent	Suitability for Preservation	Comments
1302	California bay	1,1,1,1,1,1	No	4	Moderate	Upright form; multiple attachments arise at base; vines growing up crown; vigorous; stump sprouts.
1303	California bay	3,2,2,2,1,1,1	Yes	2	Low	Upright form; multiple attachments arise at base; vines growing up crown; moderate dieback; stump sprouts.
1304	California black walnut	3	No	4	Moderate	Spreading upright form; volunteer; low branching; vigorous.
1305	Coast live oak	13,12	Yes	4	High	Slightly thin crown with minor twig dieback; low branching; codominant at 3'.
1306	Almond	6,5,5,4,4,4,4	Yes	1	Low	All but dead; failed at base; spreading crown.
1307	Coast live oak	2,2,1,1	No	3	Moderate	Upright thin crown; minor twig dieback; multiple attachments arise at base; 1" dead stem.
1308	Elderberry	4,4,4,3,3,2,2,1,1	Yes	3	Moderate	Multiple attachments arise at base; all but dead; thin crown with severe dieback.
1309	Elderberry	2,1,1,1,1	No	No Value	No Value	Dead.
1310	Coast live oak	3,3,3	No	3	Moderate	Multiple attachments arise at base; leggy volunteer; upright form; suppressed.
1311	Coast live oak	11,10	Yes	3	Moderate	Codominant at 1.5'; one sided crown; minor dieback; previously topped at 15'; fire damaged trunk.
1312	Coast live oak	12	Yes	2	Low	Codominant at 5.5'; one sided crown; minor dieback; previously topped at 17'; fire damaged trunk.
1313	Coast live oak	7,6	Yes	3	Moderate	Codominant at 1'; minor twig dieback; upright form.
1314	Olive	3	No	2	Low	Shrubby; unmaintained; moderate dieback; volunteer.
1315	Pear	3,2,2,2,1,1,1	Yes	No Value	No Value	Dead.
1316	Coast live oak	6,5,4	Yes	3	Moderate	Multiple attachments arise at 1'; previously topped at 15'; shrubby and unmaintained; twig dieback.
1317	Coast live oak	8	No	4	Moderate	Previously topped at 12'; shrubby and unmaintained; vigorous crown.
1318	California bay	1,1,1,1,1,1	No	4	Moderate	Shrubby volunteer; multiple attachments arise at base; vigorous growth.

Tree Assessment

Vacant lot adjacent to 681 East Trimble Road
San Jose, CA
September 2021



Tree No.	Species	Trunk Diameter (in.)	Ordinance-Sized Tree?	Condition 1=poor 5=excellent	Suitability for Preservation	Comments
1319	Coast live oak	16	Yes	3	Moderate	One sided crown; codominant at 7'; slightly thin crown with dieback.
1320	Coast live oak	8,6,6,5,4	Yes	4	High	At edge of property; spreading vigorous crown; codominant at 2' and 4'.
1321	Coast live oak	7,5,4	Yes	3	Moderate	At edge of property; spreading vigorous crown; codominant at 2'; low branching; fused and crossing stems.
1322	Coast live oak	4	No	4	High	Good young tree; volunteer; upright form; slight lean from suppression.
1323	California black walnut	2	No	No Value	No Value	Dead.
1324	Coast live oak	1	No	4	High	Good young tree; volunteer; upright form; slight lean from suppression.
1325	Coast live oak	1,1	No	4	High	Good young tree; volunteer; upright form; slight lean from suppression; codominant at 2'.
1326	Coast live oak	2	No	4	High	Good young tree; volunteer; upright form; slight lean from suppression.
1327	Coast live oak	1	No	4	High	Good young tree; volunteer; upright form; slight lean from suppression.
1328	Coast live oak	1,1	No	4	High	Good young tree; volunteer; upright form; slight lean from suppression.
1329	Coast live oak	9,5	Yes	3	Moderate	Suppressed crown; previously topped at 4'; vigorous crown.
1330	Coast live oak	12	Yes	4	High	Low branching; vigorous crown; minor twig dieback; upright form.
1331	California black walnut	5,3	No	1	Low	All but dead; severe dieback.
1332	Red ironbark	23	Yes	4	Moderate	Off-site; vigorous upright form; overhangs property by about 20'.
1333	Chinese pistache	1,1	No	4	Low	Bushy volunteer at edge of property.
1334	Red ironbark	18	Yes	4	Moderate	Off-site; vigorous upright form; overhangs property by about 20'.

Tree Assessment

Vacant lot adjacent to 681 East Trimble Road
San Jose, CA
September 2021



Tree No.	Species	Trunk Diameter (in.)	Ordinance-Sized Tree?	Condition 1=poor 5=excellent	Suitability for Preservation	Comments
1335	Red ironbark	10	No	4	Moderate	Off-site; vigorous upright form; overhangs property by about 5'.
1336	Red ironbark	26	Yes	4	Moderate	Off-site; vigorous upright form; overhangs property by about 25'.
1337	Red ironbark	15	Yes	4	Moderate	Off-site; vigorous upright form; overhangs property by about 15'.
1338	Red ironbark	23	Yes	4	Moderate	Off-site; vigorous upright form; overhangs property by about 15'.
1339	Red ironbark	27	Yes	4	Moderate	Off-site; vigorous upright form; overhangs property by about 15'.
1340	Pear	2,1	No	4	Moderate	Stump sprouts; upright form; good vigor.
1341	Glossy privet	4,2,1,1,1	No	No Value	No Value	Dead; tall and leggy.
1342	Glossy privet	5,2,2	No	No Value	No Value	Dead; tall and leggy.
1343	Coast live oak	10	No	4	High	Low branching; vigorous crown; minor twig dieback; upright form.
1344	Coast live oak	4	No	2	Low	Suppressed with one sided crown and a bowed trunk; upright leggy form.
1345	Coast live oak	9,7	Yes	4	High	Low branching; vigorous crown; minor twig dieback; upright form; codominant at 4.5'.
1346	Elderberry	10,8,6,6,5,4	Yes	No Value	No Value	Dead and fire damaged; spreading crown.
1347	California black walnut	1	No	4	Moderate	Upright volunteer; vigorous.
1348	California black walnut	1	No	4	Moderate	Upright volunteer; vigorous.
1349	Coast live oak	1	No	2	Low	Off-site and growing through fence; suppressed.
1350	Escallonia	1,1,1,1,1,1	No	4	High	Off-site and growing through fence; shrubby and vigorous; screens adjacent property.
1351	Raywood ash	15	Yes	3	Moderate	Off-site and overhanging by 8'; poor structure.
1352	Raywood ash	15	Yes	3	Moderate	Off-site and overhanging by 10; fair vigor.

Tree Assessment

Vacant lot adjacent to 681 East Trimble Road
San Jose, CA
September 2021



Tree No.	Species	Trunk Diameter (in.)	Ordinance-Sized Tree?	Condition 1=poor 5=excellent	Suitability for Preservation	Comments
1353	Escallonia	1,1,1,1,1,1	No	4	High	Off-site and growing through fence; shrubby and vigorous; screens adjacent property.
1354	Escallonia	1,1,1,1,1,1	No	4	High	Off-site and growing through fence; shrubby and vigorous; screens adjacent property.
1355	Escallonia	1,1,1,1,1,1	No	2	Low	Off-site and growing through fence; shrubby with poor vigor; screens adjacent property.
1356	Coast live oak	2	No	2	Low	Off-site and growing through fence; suppressed.
1357	Raywood ash	4,3,3	No	4	High	Off-site and overhanging by 5'; good vigor.
1358	Coast live oak	5	No	4	Low	Off-site and growing through fence; leans; good vigor.
1359	Italian buckthorn	2,1,1,1,1	No	4	Low	Off-site and growing through fence; leans; good vigor.
1360	Raywood ash	14	Yes	2	Low	Off-site and overhanging by 1-2'; poor structure.
1361	Escallonia	1,1,1,1,1,1	No	4	High	Off-site and growing through fence; shrubby with good vigor; screens adjacent property.
1362	Coast live oak	1	No	4	High	Volunteer; good young tree.
1363	Coast live oak	2,1	No	4	Moderate	Volunteer; good young tree; growing through fence; off-site.
1364	Escallonia	3,3,2,2,2,1	Yes	4	High	Off-site and growing through fence; shrubby with good vigor; screens adjacent property.
1365	Escallonia	1,1,1,1,1,1	No	4	High	Off-site and growing through fence; shrubby with good vigor; screens adjacent property.
1366	Raywood ash	1,1	No	2	Low	On-site; leggy form; suppressed.
1367	Escallonia	3,3,2,2,1,1	Yes	4	High	Off-site and growing through fence; shrubby with good vigor; screens adjacent property.
1368	Arizona ash	3,3,2,2,1,1	Yes	2	Low	On-site; leggy form; suppressed.
1369	Arizona ash	2	No	2	Low	On-site; leggy form; suppressed; leans.
1370	Escallonia	3,3,2,2,1,1	Yes	3	Moderate	Off-site and growing through fence; shrubby with moderate vigor; screens adjacent property.
1371	Arizona ash	17	Yes	2	Low	Off-site; 15' of overhang; poor vigor.
1372	Coast live oak	2	No	3	Low	Off-site; growing through fence; suppressed and leans.

Tree Assessment

Vacant lot adjacent to 681 East Trimble Road
 San Jose, CA
 September 2021



Tree No.	Species	Trunk Diameter (in.)	Ordinance-Sized Tree?	Condition 1=poor 5=excellent	Suitability for Preservation	Comments
1373	Escallonia	2,2,2,1,1,1	No	3	Moderate	Off-site and growing through fence; shrubby with good vigor; screens adjacent property.
1374	Arizona ash	7,7,5,5,4,4,4	Yes	2	Low	Off-site; 15' of overhang; poor vigor.
1375	Arizona ash	7,7,5,5,4,4,4	Yes	2	Low	Off-site; 15' of overhang; poor vigor.
1376	Escallonia	1,1,1,1,1,1	No	3	Moderate	Off-site and growing through fence; shrubby with <input type="checkbox"/> moderate vigor; screens adjacent property.
1377	Escallonia	1,1,1,1,1,1	No	3	Moderate	Off-site and growing through fence; shrubby with <input type="checkbox"/> moderate vigor; screens adjacent property.
1378	Raywood ash	10	No	3	Moderate	Off-site with 1-2' of overhang; poor vigor; screens adjacent property.
1379	Escallonia	1,1,1,1,1,1	No	3	Moderate	Off-site and growing through fence; shrubby with <input type="checkbox"/> moderate vigor; screens adjacent property.
1380	Escallonia	1,1,1,1,1,1	No	3	Moderate	Off-site and growing through fence; shrubby with <input type="checkbox"/> moderate vigor; screens adjacent property.
1381	Coast live oak	3	No	2	Moderate	Off-site with 1-2' of overhang; suppressed and leggy.
1382	Coast live oak	3	No	2	Moderate	Off-site with 1-2' of overhang; suppressed and leggy.

Tree Assessment Plan

681 E. Trimble Road
San Jose, CA

Prepared for:
Hanover Company
Danville, CA

February 2021

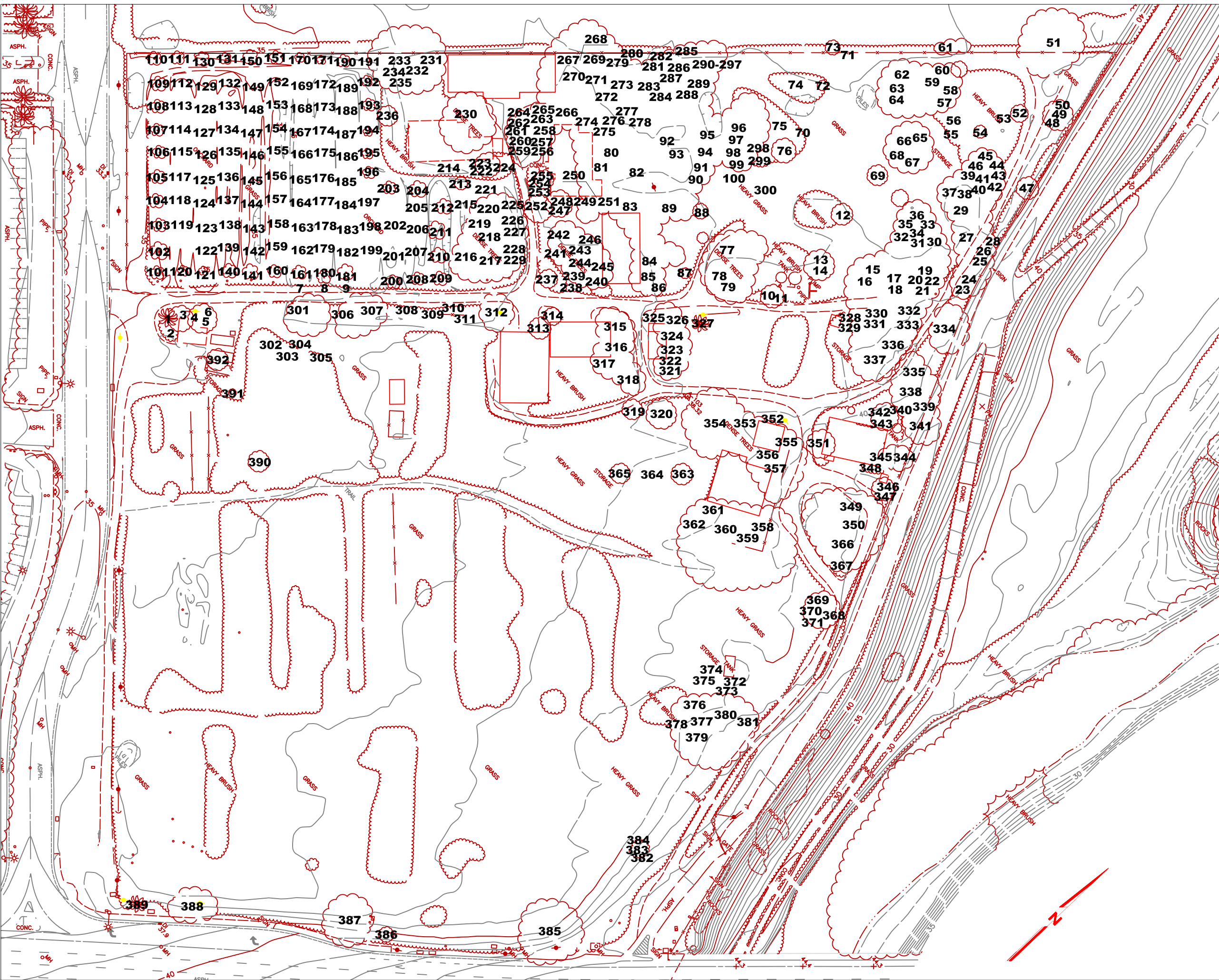
No Scale

Notes:
Base map provided by:
Ruth & Going, Inc.
Santa Clara, CA

Numbered tree locations are approximate.



325 Ray Street
Pleasanton, CA 94566
Phone 925.484.0211
Fax 925.484.0596
www.hortscience.com



Tree Assessment Map

Vacant lot on Seely Ave.
San Jose, CA

Prepared for:
Hanover Company
156 Diablo Road, Suite 220
Danville, CA 94526

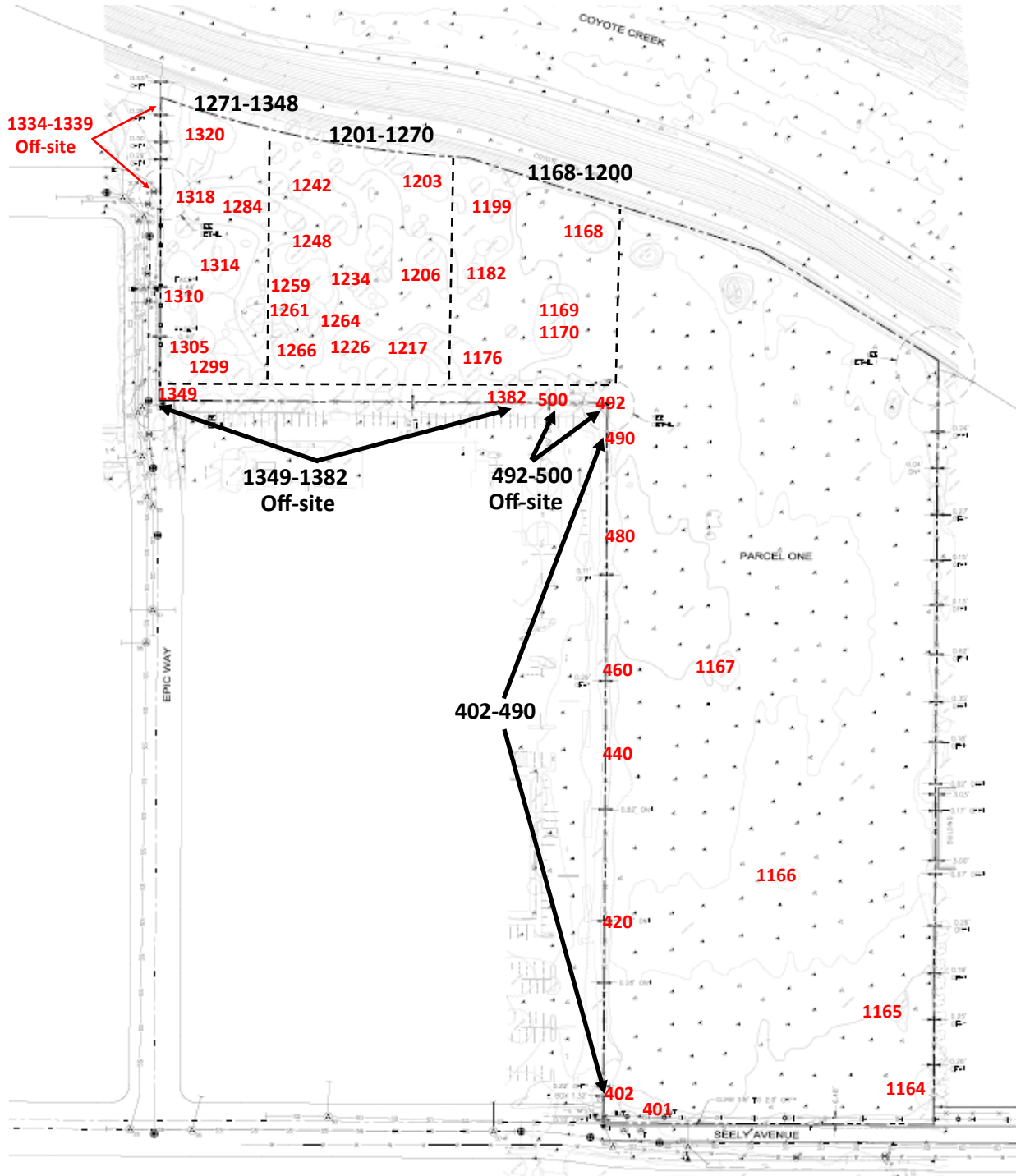
October 2021

No Scale

Notes:

Base map provided by:
HMH

Numbered tree locations are approximate



325 Ray Street
Pleasanton, California 94566
Phone 925.484.0211
Fax 925.484.0596

Tree Disposition

681 East Trimble and adjacent vacant lot
San Jose, CA
October 2021

Tree No.	Species	Rounded Trunk Diameter (in.)	Ordinance Tree?	Disposition	Disposition Comments
1	Mexican fan palm	14	Yes	Remove	Located on-site in development area
2	Purpleleaf plum	4	No	Remove	Located on-site in development area
3	Purpleleaf plum	4	No	Remove	Located on-site in development area
4	Butterfly bush	3,3,3	Yes	Remove	Located on-site in development area
5	Cherry	5,4,4	Yes	Remove	Located on-site in development area
6	Pear	4,3	No	Remove	Located on-site in development area
7	Pear	2,2,1	No	Remove	Located on-site in development area
8	Pear	1,1	No	Remove	Located on-site in development area
9	Pear	4	No	Remove	Located on-site in development area
10	Glossy privet	5,4,4	Yes	Remove	Located on-site in development area
11	Glossy privet	3,2,2	No	Remove	Located on-site in development area
12	Pear	4,4,3	Yes	Remove	Located on-site in development area
13	California black walnut	1,1,1	No	Remove	Located on-site in development area
14	Glossy privet	4,3,3	Yes	Remove	Located on-site in development area
15	Coast live oak	1	No	Remove	Located on-site in development area
16	California black walnut	3,2,2	No	Remove	Located on-site in development area
17	Coast live oak	3	No	Remove	Located on-site in development area
18	Chestnut	8,7,7	Yes	Remove	Located on-site in development area
19	Glossy privet	1,1,1	No	Remove	Located on-site in development area
20	Glossy privet	1	No	Remove	Located on-site in development area
21	Cherry	4	No	Remove	Located on-site in development area
22	Chestnut	12,10,7	Yes	Remove	Located on-site in development area
23	Chestnut	3,3,2	No	Remove	Located on-site in development area
24	Coast live oak	4,2,2	No	Remove	Located on-site in development area
25	Pear	6,6,3	Yes	Remove	Located on-site in development area
26	Coast live oak	6,4	No	Remove	Located on-site in development area
27	Cherry	2,1,1	No	Remove	Located on-site in development area
28	Chestnut	7,6,5	Yes	Remove	Located on-site in development area
29	Coast live oak	12,10,8	Yes	Remove	Located on-site in development area
30	Pear	12,10,6	Yes	Remove	Located on-site in development area
31	Coast live oak	2	No	Remove	Located on-site in development area
32	Pear	3,3,2	Yes	Remove	Located on-site in development area
33	Glossy privet	3,2,2	No	Remove	Located on-site in development area
34	Pear	4,4,4	Yes	Remove	Located on-site in development area
35	Pear	3,2,2	No	Remove	Located on-site in development area
36	Apple	7,4,4	Yes	Remove	Located on-site in development area
37	Coast live oak	25,5	Yes	Remove	Located on-site in development area
38	Cherry	3,2,2	No	Remove	Located on-site in development area
39	Coast live oak	1	No	Remove	Located on-site in development area
40	Chestnut	6,6,6	Yes	Remove	Located on-site in development area
41	Coast live oak	8	No	Remove	Located on-site in development area
42	Coast live oak	6	No	Remove	Located on-site in development area
43	California black walnut	1	No	Remove	Located on-site in development area
44	Coast live oak	1,1	No	Remove	Located on-site in development area
45	Coast live oak	1	No	Remove	Located on-site in development area
46	Chestnut	7,6,4	Yes	Remove	Located on-site in development area
47	Coast live oak	10	No	Remove	Located on-site in development area
48	California black walnut	3,2	No	Remove	Located on-site in development area
49	California black walnut	3	No	Remove	Located on-site in development area
50	California black walnut	6,6,5	Yes	Remove	Located on-site in development area
51	Coast live oak	16,14,14	Yes	Remove	Located on-site in development area
52	Coast live oak	6,2	No	Remove	Located on-site in development area
53	Coast live oak	4,3,2	No	Remove	Located on-site in development area
54	Coast live oak	2,2	No	Remove	Located on-site in development area
55	California black walnut	12,12,12	Yes	Remove	Located on-site in development area
56	Glossy privet	1,1,1	No	Remove	Located on-site in development area
57	Tree of heaven	4,3	No	Remove	Located on-site in development area
58	Tree of heaven	4	No	Remove	Located on-site in development area
59	Tree of heaven	5	No	Remove	Located on-site in development area
60	Tree of heaven	8,6	Yes	Remove	Located on-site in development area
61	Tree of heaven	2	No	Remove	Located on-site in development area
62	Coast live oak	1	No	Remove	Located on-site in development area
63	Almond	5,4,4	Yes	Remove	Located on-site in development area
64	Glossy privet	2,2,2	No	Remove	Located on-site in development area
65	Coast live oak	12,10	Yes	Remove	Located on-site in development area
66	Tree of heaven	18	Yes	Remove	Located on-site in development area
67	Tree of heaven	4,4,4	Yes	Remove	Located on-site in development area
68	Tree of heaven	3,3	No	Remove	Located on-site in development area
69	California black walnut	7,6,6	Yes	Remove	Located on-site in development area
70	California black walnut	6,5,4	Yes	Remove	Located on-site in development area

71	Coast live oak	1	No	Remove	Located on-site in development area
72	Cherry	1,1	No	Remove	Located on-site in development area
73	Cherry	4,3	No	Remove	Located on-site in development area
74	Cherry	1,1,1	No	Remove	Located on-site in development area
75	Glossy privet	1,1,1	No	Remove	Located on-site in development area
76	Coast live oak	18,16,12	Yes	Remove	Located on-site in development area
77	Glossy privet	4,2,1	No	Remove	Located on-site in development area
78	Glossy privet	2,2,2	No	Remove	Located on-site in development area
79	Chestnut	14,8,4	Yes	Remove	Located on-site in development area
80	Chestnut	20	Yes	Remove	Located on-site in development area
81	Avocado	16,14	Yes	Remove	Located on-site in development area
82	Bamboo	1,1,1	Yes	Remove	Located on-site in development area
83	Coast live oak	23	Yes	Remove	Located on-site in development area
84	Glossy privet	6	No	Remove	Located on-site in development area
85	Glossy privet	16	Yes	Remove	Located on-site in development area
86	Pomegranate	8,4,3	Yes	Remove	Located on-site in development area
87	Almond	3,3,3	Yes	Remove	Located on-site in development area
88	Glossy privet	1,1,1	No	Remove	Located on-site in development area
89	Glossy privet	8,7,6	Yes	Remove	Located on-site in development area
90	Glossy privet	1,1,1	No	Remove	Located on-site in development area
91	Almond	6,5,5	Yes	Remove	Located on-site in development area
92	Almond	6,4,4	Yes	Remove	Located on-site in development area
93	Almond	6,5,5	Yes	Remove	Located on-site in development area
94	Glossy privet	2,2,2	No	Remove	Located on-site in development area
95	Almond	12,2,2	Yes	Remove	Located on-site in development area
96	Almond	6,5,4	Yes	Remove	Located on-site in development area
97	Almond	6,5,5	Yes	Remove	Located on-site in development area
98	Glossy privet	1,1,1	No	Remove	Located on-site in development area
99	Almond	6,5,5	Yes	Remove	Located on-site in development area
100	Glossy privet	3,3,2	No	Remove	Located on-site in development area
101	Persimmon	8,8,7	Yes	Remove	Located on-site in development area
102	Persimmon	7,7,4	Yes	Remove	Located on-site in development area
103	Persimmon	8,6	Yes	Remove	Located on-site in development area
104	Persimmon	7,7,4	Yes	Remove	Located on-site in development area
105	Persimmon	8,6	Yes	Remove	Located on-site in development area
106	Persimmon	8,7,4	Yes	Remove	Located on-site in development area
107	Persimmon	10,4	Yes	Remove	Located on-site in development area
108	Persimmon	10	No	Remove	Located on-site in development area
109	Persimmon	7,3,3	Yes	Remove	Located on-site in development area
110	Persimmon	8,5	Yes	Remove	Located on-site in development area
111	Persimmon	9,1	No	Remove	Located on-site in development area
112	Persimmon	8,1,1	No	Remove	Located on-site in development area
113	Persimmon	9,3,1	Yes	Remove	Located on-site in development area
114	Persimmon	8,4,4	Yes	Remove	Located on-site in development area
115	Persimmon	6,6,5	Yes	Remove	Located on-site in development area
116	Persimmon	8,5,5	Yes	Remove	Located on-site in development area
117	Persimmon	7,6,5	Yes	Remove	Located on-site in development area
118	Persimmon	7,6,4	Yes	Remove	Located on-site in development area
119	Persimmon	8,6	Yes	Remove	Located on-site in development area
120	Persimmon	8,7,5	Yes	Remove	Located on-site in development area
121	Persimmon	8,2,2	Yes	Remove	Located on-site in development area
122	Persimmon	7,5,3	Yes	Remove	Located on-site in development area
123	Persimmon	6,4,2	No	Remove	Located on-site in development area
124	Persimmon	8,6	Yes	Remove	Located on-site in development area
125	Persimmon	6,6,5	Yes	Remove	Located on-site in development area
126	Persimmon	7,6,4	Yes	Remove	Located on-site in development area
127	Persimmon	8,5,4	Yes	Remove	Located on-site in development area
128	Persimmon	7,4	No	Remove	Located on-site in development area
129	Persimmon	8,3,2	Yes	Remove	Located on-site in development area
130	Persimmon	8,7	Yes	Remove	Located on-site in development area
131	Persimmon	5,5,4	Yes	Remove	Located on-site in development area
132	Persimmon	9	No	Remove	Located on-site in development area
133	Persimmon	8,6,3	Yes	Remove	Located on-site in development area
134	Persimmon	6,5,5	Yes	Remove	Located on-site in development area
135	Persimmon	7,6,5	Yes	Remove	Located on-site in development area
136	Persimmon	7,4,2	Yes	Remove	Located on-site in development area
137	Persimmon	7,6	Yes	Remove	Located on-site in development area
138	Persimmon	7,5	Yes	Remove	Located on-site in development area
139	Persimmon	6,6,3	Yes	Remove	Located on-site in development area
140	Persimmon	9	No	Remove	Located on-site in development area
141	Persimmon	7,5,1	Yes	Remove	Located on-site in development area
142	Persimmon	8,3,2	Yes	Remove	Located on-site in development area
143	Persimmon	8,5	Yes	Remove	Located on-site in development area
144	Persimmon	7,7,5	Yes	Remove	Located on-site in development area
145	Persimmon	7,5,4	Yes	Remove	Located on-site in development area
146	Persimmon	7,6,3	Yes	Remove	Located on-site in development area
147	Persimmon	6,6,4	Yes	Remove	Located on-site in development area
148	Persimmon	9,4,4	Yes	Remove	Located on-site in development area
149	Persimmon	6,6,3	Yes	Remove	Located on-site in development area
150	Persimmon	7,6,2	Yes	Remove	Located on-site in development area
151	Persimmon	8,2,2	Yes	Remove	Located on-site in development area
152	Persimmon	8,1	No	Remove	Located on-site in development area
153	Persimmon	5,5	No	Remove	Located on-site in development area
154	Persimmon	7,5,5	Yes	Remove	Located on-site in development area
155	Persimmon	7,5,2	Yes	Remove	Located on-site in development area
156	Persimmon	8,7,6	Yes	Remove	Located on-site in development area
157	Persimmon	8	No	Remove	Located on-site in development area
158	Persimmon	7,6,6	Yes	Remove	Located on-site in development area

159	Persimmon	7,7,3	Yes	Remove	Located on-site in development area
160	Persimmon	8,5,2	Yes	Remove	Located on-site in development area
161	Persimmon	7,6,1	Yes	Remove	Located on-site in development area
162	Persimmon	9,4	Yes	Remove	Located on-site in development area
163	Persimmon	8,4,3	Yes	Remove	Located on-site in development area
164	Persimmon	7,4,3	Yes	Remove	Located on-site in development area
165	Persimmon	7,6,6	Yes	Remove	Located on-site in development area
166	Persimmon	7,6,4	Yes	Remove	Located on-site in development area
167	Persimmon	7,6,1	Yes	Remove	Located on-site in development area
168	Persimmon	6,5,4	Yes	Remove	Located on-site in development area
169	Persimmon	7,6,5	Yes	Remove	Located on-site in development area
170	Persimmon	6,2,2	No	Remove	Located on-site in development area
171	Persimmon	6,3,2	No	Remove	Located on-site in development area
172	Persimmon	6,6	Yes	Remove	Located on-site in development area
173	Persimmon	6,6	Yes	Remove	Located on-site in development area
174	Persimmon	8	No	Remove	Located on-site in development area
175	Persimmon	7,4,4	Yes	Remove	Located on-site in development area
176	Persimmon	6,6	Yes	Remove	Located on-site in development area
177	Persimmon	7,5,3	Yes	Remove	Located on-site in development area
178	Persimmon	6,5,2	Yes	Remove	Located on-site in development area
179	Persimmon	7,2,2	No	Remove	Located on-site in development area
180	Persimmon	8	No	Remove	Located on-site in development area
181	Persimmon	8,3	No	Remove	Located on-site in development area
182	Persimmon	7,7	Yes	Remove	Located on-site in development area
183	Persimmon	6,6,4	Yes	Remove	Located on-site in development area
184	Persimmon	5,4,4	Yes	Remove	Located on-site in development area
185	Persimmon	7,5,3	Yes	Remove	Located on-site in development area
186	Persimmon	6,6,4	Yes	Remove	Located on-site in development area
187	Persimmon	6,6,5	Yes	Remove	Located on-site in development area
188	Persimmon	6,4,2	No	Remove	Located on-site in development area
189	Persimmon	6,4,4	Yes	Remove	Located on-site in development area
190	Persimmon	7	No	Remove	Located on-site in development area
191	Persimmon	6,4	No	Remove	Located on-site in development area
192	Persimmon	6,5,2	Yes	Remove	Located on-site in development area
193	Persimmon	7,6,5	Yes	Remove	Located on-site in development area
194	Persimmon	7,4,3	Yes	Remove	Located on-site in development area
195	Persimmon	7,4,3	Yes	Remove	Located on-site in development area
196	Persimmon	5,5,3	Yes	Remove	Located on-site in development area
197	Persimmon	8,3,2	Yes	Remove	Located on-site in development area
198	Persimmon	6,5,3	Yes	Remove	Located on-site in development area
199	Persimmon	7,4,3	Yes	Remove	Located on-site in development area
200	Persimmon	4,3,3	Yes	Remove	Located on-site in development area
201	Persimmon	7,5,5	Yes	Remove	Located on-site in development area
202	Persimmon	8,6,6	Yes	Remove	Located on-site in development area
203	Persimmon	11,9,8	Yes	Remove	Located on-site in development area
204	Persimmon	6,4,4	Yes	Remove	Located on-site in development area
205	Plum	1,1,1	No	Remove	Located on-site in development area
206	Pear	3,3,2	Yes	Remove	Located on-site in development area
207	Plum	2,2,2	No	Remove	Located on-site in development area
208	Almond	5,3,2	Yes	Remove	Located on-site in development area
209	Persimmon	9,2	No	Remove	Located on-site in development area
210	Cherry	4,4,4	Yes	Remove	Located on-site in development area
211	Pear	4,4,3	Yes	Remove	Located on-site in development area
212	Cherry	3,3,3	Yes	Remove	Located on-site in development area
213	Pear	4,4,4	Yes	Remove	Located on-site in development area
214	Glossy privet	3,3,3	Yes	Remove	Located on-site in development area
215	Pear	4,4,4	Yes	Remove	Located on-site in development area
216	Avocado	7,4,3	Yes	Remove	Located on-site in development area
217	Avocado	6,6,4	Yes	Remove	Located on-site in development area
218	Avocado	7	No	Remove	Located on-site in development area
219	Avocado	7,5,4	Yes	Remove	Located on-site in development area
220	Avocado	7	No	Remove	Located on-site in development area
221	Pear	3,2	No	Remove	Located on-site in development area
222	Banana	3,3,3	No	Remove	Located on-site in development area
223	Pear	4,4,3	No	Remove	Located on-site in development area
224	Pear	5	No	Remove	Located on-site in development area
225	Loquat	6,5,4	Yes	Remove	Located on-site in development area
226	Glossy privet	1,1,1	No	Remove	Located on-site in development area
227	Pecan	18	Yes	Remove	Located on-site in development area
228	Avocado	1	No	Remove	Located on-site in development area
229	Pear	7,5,4	Yes	Remove	Located on-site in development area
230	California black walnut	15	Yes	Remove	Located on-site in development area
231	Siberian elm	12,12,8	Yes	Remove	Located on-site in development area
232	Siberian elm	13,8,8	Yes	Remove	Located on-site in development area
233	European hackberry	33	Yes	Remove	Located on-site in development area
234	Persimmon	9,5,3	Yes	Remove	Located on-site in development area
235	Fig	3,3,3	Yes	Remove	Located on-site in development area
236	Persimmon	8,7	Yes	Remove	Located on-site in development area
237	Cherry	11,9,9	Yes	Remove	Located on-site in development area
238	Cherry	6,4,1	Yes	Remove	Located on-site in development area
239	Cherry	4,3,3	Yes	Remove	Located on-site in development area
240	Cherry	11	No	Remove	Located on-site in development area
241	Siberian elm	4,3,2	No	Remove	Located on-site in development area
242	Orange	4,3,3	Yes	Remove	Located on-site in development area
243	Coast live oak	6	No	Remove	Located on-site in development area
244	Cherry	4	No	Remove	Located on-site in development area

245	Holly oak	8,6,5	Yes	Remove	Located on-site in development area
246	Holly oak	8,5,3	Yes	Remove	Located on-site in development area
247	Cherry	4,4,4	Yes	Remove	Located on-site in development area
248	California black walnut	3	No	Remove	Located on-site in development area
249	Chinese pistache	9	No	Remove	Located on-site in development area
250	Avocado	2	No	Remove	Located on-site in development area
251	Plum	8	No	Remove	Located on-site in development area
252	Orange	4,4,4	Yes	Remove	Located on-site in development area
253	Plum	3,2,2	No	Remove	Located on-site in development area
254	Plum	2,1	No	Remove	Located on-site in development area
255	Avocado	5,4	No	Remove	Located on-site in development area
256	Heavenly bamboo	1,1,1	Yes	Remove	Located on-site in development area
257	Tangerine	1,1,1	No	Remove	Located on-site in development area
258	Orange	1,1,1	No	Remove	Located on-site in development area
259	Glossy privet	8,7	Yes	Remove	Located on-site in development area
260	Orange	9,6,4	Yes	Remove	Located on-site in development area
261	Pomegranate	7,7,5	Yes	Remove	Located on-site in development area
262	Lemon	2	No	Remove	Located on-site in development area
263	Cabbage palm	10,8,8	Yes	Remove	Located on-site in development area
264	Avocado	1	No	Remove	Located on-site in development area
265	Avocado	2,2,2	No	Remove	Located on-site in development area
266	California black walnut	21,20	Yes	Remove	Located on-site in development area
267	California black walnut	18	Yes	Remove	Located on-site in development area
268	Glossy privet	7,6,6	Yes	Remove	Located on-site in development area
269	Glossy privet	8,7,6	Yes	Remove	Located on-site in development area
270	Glossy privet	9	No	Remove	Located on-site in development area
271	Fig	6,6	Yes	Remove	Located on-site in development area
272	Fig	8,6,3	Yes	Remove	Located on-site in development area
273	Fig	12	Yes	Remove	Located on-site in development area
274	Avocado	6,1	No	Remove	Located on-site in development area
275	Avocado	12,9	Yes	Remove	Located on-site in development area
276	Fig	8,7,4	Yes	Remove	Located on-site in development area
277	Almond	10	No	Remove	Located on-site in development area
278	Chestnut	15,8	Yes	Remove	Located on-site in development area
279	Cherry	8,6,3	Yes	Remove	Located on-site in development area
280	Glossy privet	10,10	Yes	Remove	Located on-site in development area
281	Glossy privet	1,1	No	Remove	Located on-site in development area
282	Chestnut	2,2	No	Remove	Located on-site in development area
283	Chestnut	20	Yes	Remove	Located on-site in development area
284	Chestnut	12,9,8	Yes	Remove	Located on-site in development area
285	Glossy privet	1,1,1	Yes	Remove	Located on-site in development area
286	Glossy privet	3,3,2	Yes	Remove	Located on-site in development area
287	Plum	6,6,4	Yes	Remove	Located on-site in development area
288	Chestnut	6,5,4	Yes	Remove	Located on-site in development area
289	Almond	6,6,4	Yes	Remove	Located on-site in development area
290	Almond	6,6,4	Yes	Remove	Located on-site in development area
291	Glossy privet	3,3,3	Yes	Remove	Located on-site in development area
292	Glossy privet	2,2,1	No	Remove	Located on-site in development area
293	Glossy privet	7,6,3	Yes	Remove	Located on-site in development area
294	Glossy privet	2,2,2	Yes	Remove	Located on-site in development area
295	Glossy privet	4,3,3	Yes	Remove	Located on-site in development area
296	Glossy privet	3,3,3	Yes	Remove	Located on-site in development area
297	Avocado	1,1,1	No	Remove	Located on-site in development area
298	Almond	7,6,6	Yes	Remove	Located on-site in development area
299	Almond	4,3,3	No	Remove	Located on-site in development area
300	Almond	1,1,1	No	Remove	Located on-site in development area
301	Chestnut	18,12,8	Yes	Remove	Located on-site in development area
302	Fig	1	No	Remove	Located on-site in development area
303	Fig	1	No	Remove	Located on-site in development area
304	Orange	1,1,1	No	Remove	Located on-site in development area
305	Fig	2,2,2	No	Remove	Located on-site in development area
306	Chestnut	14,12,10	Yes	Remove	Located on-site in development area
307	Apple	6,5,4	Yes	Remove	Located on-site in development area
308	Pear	3,2,2	No	Remove	Located on-site in development area
309	Apple	2,2,2	No	Remove	Located on-site in development area
310	Apple	2,2,1	No	Remove	Located on-site in development area
311	Apple	1,1,1	No	Remove	Located on-site in development area
312	Chestnut	18	Yes	Remove	Located on-site in development area
313	Fig	8,6,4	Yes	Remove	Located on-site in development area
314	Coast live oak	3,1	No	Remove	Located on-site in development area
315	Coast live oak	8,7,7	Yes	Remove	Located on-site in development area
316	California black walnut	12,11	Yes	Remove	Located on-site in development area
317	Glossy privet	3,2,1	No	Remove	Located on-site in development area
318	Coast live oak	7,5,4	Yes	Remove	Located on-site in development area
319	California black walnut	6,5	No	Remove	Located on-site in development area
320	Coast live oak	11	No	Remove	Located on-site in development area
321	Fig	4	No	Remove	Located on-site in development area
322	Fig	9	No	Remove	Located on-site in development area
323	Italian buckthorn	6,4,3	No	Remove	Located on-site in development area
324	Italian buckthorn	10,8	Yes	Remove	Located on-site in development area
325	Italian buckthorn	6,4,3	Yes	Remove	Located on-site in development area
326	Olive	6,4,3	Yes	Remove	Located on-site in development area
327	Mexican fan palm	30	Yes	Remove	Located on-site in development area

328	Tree of heaven	2	No	Remove	Located on-site in development area
329	Holly oak	4,3,2	No	Remove	Located on-site in development area
330	Coast live oak	13,11	Yes	Remove	Located on-site in development area
331	Coast live oak	16,12	Yes	Remove	Located on-site in development area
333	Coast live oak	3	No	Remove	Located on-site in development area
334	Coast live oak	12,12,10	Yes	Remove	Located on-site in development area
335	Coast live oak	10,8,4	Yes	Remove	Located on-site in development area
336	Coast live oak	4	No	Remove	Located on-site in development area
337	Coast live oak	20,18,17	Yes	Remove	Located on-site in development area
338	Tree of heaven	14	Yes	Remove	Located on-site in development area
339	Coast live oak	4,3,3	No	Remove	Located on-site in development area
340	Tree of heaven	1	No	Remove	Located on-site in development area
341	Coast live oak	18	Yes	Remove	Located on-site in development area
342	California black walnut	12,6,4	Yes	Remove	Located on-site in development area
343	California black walnut	3,2,2	Yes	Remove	Located on-site in development area
344	Tree of heaven	5,1	No	Remove	Located on-site in development area
345	Tree of heaven	4,3	No	Remove	Located on-site in development area
346	Tree of heaven	3	No	Remove	Located on-site in development area
347	Tree of heaven	4	No	Remove	Located on-site in development area
348	Tree of heaven	1	No	Remove	Located on-site in development area
349	Cherry	6	No	Remove	Located on-site in development area
350	Deodar cedar	36	Yes	Remove	Located on-site in development area
351	Cherry	7,7,7	Yes	Remove	Located on-site in development area
352	Plum	4,3,3	Yes	Remove	Located on-site in development area
353	Plum	1,1,1	No	Remove	Located on-site in development area
354	California black walnut	12,8,8	Yes	Remove	Located on-site in development area
355	Orange	7,6,4	Yes	Remove	Located on-site in development area
356	California black walnut	17	Yes	Remove	Located on-site in development area
357	Coast live oak	14	Yes	Remove	Located on-site in development area
358	California black walnut	24,18,16	Yes	Remove	Located on-site in development area
359	Chestnut	12	Yes	Remove	Located on-site in development area
360	Evergreen ash	18,18,16	Yes	Remove	Located on-site in development area
361	Glossy privet	6,6,4	Yes	Remove	Located on-site in development area
362	Bottlebrush	6,6,6	Yes	Remove	Located on-site in development area
363	Coast live oak	4,4,3	No	Remove	Located on-site in development area
364	Almond	3,3,3	Yes	Remove	Located on-site in development area
365	Almond	3,3,3	Yes	Remove	Located on-site in development area
366	Holly oak	8,1,1	No	Remove	Located on-site in development area
367	Tree of heaven	1,1,1	No	Remove	Located on-site in development area
368	Glossy privet	4,4,4	Yes	Remove	Located on-site in development area
369	Apple	4	No	Remove	Located on-site in development area
370	Apple	4	No	Remove	Located on-site in development area
371	European hackberry	12,12,12	Yes	Remove	Located on-site in development area
372	Plum	1,1,1	No	Remove	Located on-site in development area
373	Apple	5	No	Remove	Located on-site in development area
374	Almond	1,1,1	No	Remove	Located on-site in development area
375	Coast live oak	2,1	No	Remove	Located on-site in development area
376	Tree of heaven	4,3,3	Yes	Remove	Located on-site in development area
377	Glossy privet	4,3,3	Yes	Remove	Located on-site in development area
378	Glossy privet	1,1,1	No	Remove	Located on-site in development area
379	Tree of heaven	14,10,10	Yes	Remove	Located on-site in development area
380	Tree of heaven	8,6,6	Yes	Remove	Located on-site in development area
381	Tree of heaven	10,10,8	Yes	Remove	Located on-site in development area
382	Tree of heaven	3,2,2	No	Remove	Located on-site in development area
383	Tree of heaven	6,4,4	Yes	Remove	Located on-site in development area
384	Coast live oak	3	No	Remove	Located on-site in development area
385	California black walnut	18,17	Yes	Remove	Located on-site in development area
386	California black walnut	4	No	Remove	Located on-site in development area
387	California black walnut	11,11,8	Yes	Remove	Located on-site in development area
388	California black walnut	12,12,10	Yes	Remove	Located on-site in development area
389	Mexican fan palm	14	Yes	Remove	Located on-site in development area
390	Fig	10,9	Yes	Remove	Located on-site in development area
391	Loquat	2,2,1	No	Remove	Located on-site in development area
401	Mexican fan palm	17	Yes	Remove	Located on-site in development area
402	Glossy privet	4,3,2	No	Preserve	Located off-site outside development area
403	Oleander	4,4,4	Yes	Preserve	Located off-site outside development area
404	Oleander	4,4,3	Yes	Preserve	Located off-site outside development area
405	Oleander	4,4,4	Yes	Preserve	Located off-site outside development area
406	Holly oak	10,8	Yes	Remove	Located on-site in development area
407	Olive	6	No	Preserve	Located off-site outside development area
408	Oleander	4,4,4	Yes	Preserve	Located off-site outside development area

409	Oleander	3,3,3	Yes	Preserve	Located off-site outside development area
410	Oleander	4,3,3	Yes	Preserve	Located off-site outside development area
411	Oleander	3,3,3	Yes	Preserve	Located off-site outside development area
412	Oleander	4,3,3	Yes	Preserve	Located off-site outside development area
413	Oleander	3,3,3	Yes	Preserve	Located off-site outside development area
414	Oleander	3,2,2	Yes	Preserve	Located off-site outside development area
415	Oleander	3,3,2	Yes	Preserve	Located off-site outside development area
416	Raywood ash	9	No	Preserve	Located off-site outside development area
417	Oleander	3,2,2	No	Preserve	Located off-site outside development area
418	Oleander	3,3,2	No	Preserve	Located off-site outside development area
419	Holly oak	4	No	Preserve	Located off-site outside development area
420	Oleander	2,1,1	No	Preserve	Located off-site outside development area
421	Oleander	3,1,1	No	Preserve	Located off-site outside development area
422	Oleander	4,3,2	Yes	Preserve	Located off-site outside development area
423	Oleander	4,3,2	Yes	Preserve	Located off-site outside development area
424	Southern live oak	3,3	No	Preserve	Located off-site outside development area
425	Raywood ash	14	Yes	Preserve	Located off-site outside development area
426	Oleander	4,3,2	Yes	Preserve	Located off-site outside development area
427	Oleander	3,2,2	Yes	Preserve	Located off-site outside development area
428	Oleander	4,4,3	Yes	Preserve	Located off-site outside development area
429	Oleander	3,2,2	Yes	Preserve	Located off-site outside development area
430	Oleander	2,1,1	Yes	Preserve	Located off-site outside development area
431	Oleander	3,3,2	Yes	Preserve	Located off-site outside development area
432	Italian buckthorn	3,3,2	Yes	Remove	Located on-site in development area
433	Raywood ash	16	Yes	Preserve	Located off-site outside development area
434	Oleander	3,2,2	No	Preserve	Located off-site outside development area
435	Raywood ash	13	Yes	Preserve	Located off-site outside development area
436	Oleander	4,4,3	Yes	Preserve	Located off-site outside development area
437	Oleander	5,4,4	Yes	Preserve	Located off-site outside development area
438	Italian buckthorn	5,4,3	Yes	Preserve	Located off-site outside development area
439	Italian buckthorn	3	No	Preserve	Located off-site outside development area
440	California black walnut	4	No	Preserve	Located off-site outside development area
441	Italian buckthorn	5	No	Preserve	Located off-site outside development area
442	Elderberry	8,7,6	Yes	Preserve	Located off-site outside development area
443	Coast live oak	20,11	Yes	Remove	Located on-site in development area
444	Oleander	4,3,2	Yes	Preserve	Located off-site outside development area
445	Oleander	3,2,2	Yes	Preserve	Located off-site outside development area
446	Oleander	3,2,2	Yes	Preserve	Located off-site outside development area
447	Oleander	3,3,2	Yes	Preserve	Located off-site outside development area
448	Oleander	4,3,2	Yes	Preserve	Located off-site outside development area
449	Oleander	1,1,1	No	Preserve	Located off-site outside development area
450	Italian buckthorn	4	No	Preserve	Located off-site outside development area
451	Italian buckthorn	4,3,3	Yes	Preserve	Located off-site outside development area
452	Oleander	3,3,2	Yes	Preserve	Located off-site outside development area
453	Italian buckthorn	3	No	Remove	Located on-site in development area

454	Oleander	4,3,3	Yes	Preserve	Located off-site outside development area
455	Coast live oak	4	No	Preserve	Located off-site outside development area
456	Italian buckthorn	3,1	No	Remove	Located on-site in development area
457	Oleander	4,3,3	Yes	Preserve	Located off-site outside development area
458	Arizona ash	14,12,8	Yes	Preserve	Located off-site outside development area
459	Oleander	3,3,3	Yes	Preserve	Located off-site outside development area
460	Oleander	3,3,3	Yes	Preserve	Located off-site outside development area
461	Oleander	2,1,1	No	Preserve	Located off-site outside development area
462	Italian buckthorn	4,4,3	No	Preserve	Located off-site outside development area
463	Arizona ash	5,5,4	Yes	Preserve	Located off-site outside development area
464	Italian buckthorn	2,1	No	Remove	Located on-site in development area
465	Oleander	3,3,3	Yes	Preserve	Located off-site outside development area
466	Italian buckthorn	6,4,3	Yes	Remove	Located on-site in development area
467	Italian buckthorn	3,3,3	Yes	Preserve	Located off-site outside development area
468	Oleander	2,2,2	No	Preserve	Located off-site outside development area
469	Oleander	3,3,3	Yes	Preserve	Located off-site outside development area
470	Coast redwood	9	No	Preserve	Located off-site outside development area
471	Coast live oak	2,2	No	Preserve	Located off-site outside development area
472	Raywood ash	16	Yes	Preserve	Located off-site outside development area
473	Oleander	2,1,1	No	Preserve	Located off-site outside development area
474	Oleander	3,2,2	No	Preserve	Located off-site outside development area
475	Italian buckthorn	5	No	Preserve	Located off-site outside development area
476	Oleander	2,2,2	No	Preserve	Located off-site outside development area
477	Glossy privet	5,4,4	Yes	Remove	Located on-site in development area
478	Holly oak	6,4	No	Remove	Located on-site in development area
479	Raywood ash	3	No	Remove	Located on-site in development area
480	Holly oak	5	No	Remove	Located on-site in development area
481	Italian buckthorn	4	No	Preserve	Located off-site outside development area
482	Oleander	1,1,1	No	Preserve	Located off-site outside development area
483	Southern live oak	6	No	Preserve	Located off-site outside development area
484	Oleander	4,4,3	Yes	Preserve	Located off-site outside development area
485	Oleander	3,3,3	Yes	Preserve	Located off-site outside development area
486	Oleander	4,1,1	No	Preserve	Located off-site outside development area
487	Brazilian pepper	3,3,2	Yes	Preserve	Located off-site outside development area
488	Italian buckthorn	4,4,3	No	Preserve	Located off-site outside development area
489	Oleander	3,2,2	Yes	Preserve	Located off-site outside development area
490	Purpleleaf plum	6	No	Preserve	Located off-site outside development area
491	Oleander	2,1,1	No	Preserve	Located off-site outside development area
492	Oleander	2,1,1	No	Preserve	Located off-site outside development area
493	Escallonia	1,1,1	No	Preserve	Located off-site outside development area
494	Coast live oak	2	No	Preserve	Located off-site outside development area
495	Coast live oak	2,1,1	No	Preserve	Located off-site outside development area
496	Raywood ash	12	Yes	Preserve	Located off-site outside development area
497	Escallonia	1,1,1	No	Preserve	Located off-site outside development area
498	Glossy privet	3,2,2	No	Preserve	Located off-site outside development area
499	Raywood ash	2	No	Remove	Located on-site in development area
500	Coast live oak	2	No	Preserve	Located off-site outside development area
1164	California black walnut	1	No	Remove	Located on-site in development area

1165	California black walnut	3,3,2	Yes	Remove	Located on-site in development area
1166	California black walnut	4,4,4	Yes	Remove	Located on-site in development area
1167	California black walnut	5,5,5	Yes	Remove	Located on-site in development area
1168	Coast live oak	5	No	Remove	Located on-site in development area
1169	Elderberry	14,8,6	Yes	Remove	Located on-site in development area
1170	Elderberry	9,8,8	Yes	Remove	Located on-site in development area
1171	Glossy privet	4,4,3	Yes	Remove	Located on-site in development area
1172	Coast live oak	3,2,1	No	Remove	Located on-site in development area
1173	Raywood ash	6,3	No	Remove	Located on-site in development area
1174	Coast live oak	5,4,4	Yes	Remove	Located on-site in development area
1175	Chinese pistache	3	No	Remove	Located on-site in development area
1176	Glossy privet	3,2,1	No	Remove	Located on-site in development area
1177	Elderberry	6,5,5	Yes	Remove	Located on-site in development area
1178	Glossy privet	4,3,3	Yes	Remove	Located on-site in development area
1179	Pear	3,2,1	No	Remove	Located on-site in development area
1180	Pear	3,2,2	No	Remove	Located on-site in development area
1181	Pear	3,3,3	Yes	Remove	Located on-site in development area
1182	Coast live oak	12	Yes	Remove	Located on-site in development area
1183	Pear	4,3,2	Yes	Remove	Located on-site in development area
1184	Pear	2,2	Yes	Remove	Located on-site in development area
1185	Coast live oak	9	No	Remove	Located on-site in development area
1186	Pear	3,2,2	No	Remove	Located on-site in development area
1187	Coast live oak	9	No	Remove	Located on-site in development area
1188	Pear	2,2,2	No	Remove	Located on-site in development area
1189	Olive	1,1,1	No	Remove	Located on-site in development area
1190	Pear	4,3	No	Remove	Located on-site in development area
1191	Pear	4,3	No	Remove	Located on-site in development area
1192	Pear	4,3,3	Yes	Remove	Located on-site in development area
1193	Coast live oak	6,5,4	Yes	Remove	Located on-site in development area
1194	Coast live oak	4,4,3	Yes	Remove	Located on-site in development area
1195	Coast live oak	16	Yes	Remove	Located on-site in development area
1196	Pear	3,2	No	Remove	Located on-site in development area
1197	Coast live oak	6	No	Remove	Located on-site in development area
1198	Coast live oak	3	No	Remove	Located on-site in development area
1199	Pear	3	No	Remove	Located on-site in development area
1200	Coast live oak	11	No	Remove	Located on-site in development area
1201	Coast live oak	13	Yes	Remove	Located on-site in development area
1202	Coast live oak	13	Yes	Remove	Located on-site in development area
1203	Pear	3,3,2	Yes	Remove	Located on-site in development area
1204	Olive	1,1,1	No	Remove	Located on-site in development area
1205	Coast live oak	11	No	Remove	Located on-site in development area
1206	California black walnut	6,4,4	Yes	Remove	Located on-site in development area
1207	Pear	3,2,2	No	Remove	Located on-site in development area
1208	California black walnut	3,2,2	No	Remove	Located on-site in development area
1209	Coast live oak	4,3,3	No	Remove	Located on-site in development area
1210	Pear	4,3,3	Yes	Remove	Located on-site in development area
1211	Pear	6,2,2	Yes	Remove	Located on-site in development area
1212	Coast live oak	6,5,3	Yes	Remove	Located on-site in development area
1213	Arizona ash	3	No	Remove	Located on-site in development area
1214	Arizona ash	8,7,7	Yes	Preserve	Located off-site outside development area
1215	Coast live oak	5	No	Remove	Located on-site in development area
1216	Coast live oak	16	Yes	Remove	Located on-site in development area
1217	Pear	2,1,1	No	Remove	Located on-site in development area
1218	Coast live oak	2,1,1	No	Remove	Located on-site in development area
1219	Raywood ash	3	No	Remove	Located on-site in development area
1220	Pear	5,4,4	Yes	Remove	Located on-site in development area
1221	Coast live oak	10	No	Remove	Located on-site in development area
1222	Pear	4,3,1	No	Remove	Located on-site in development area
1223	Pear	4,3,2	Yes	Remove	Located on-site in development area
1224	Pear	4,4,3	Yes	Remove	Located on-site in development area
1225	Coast live oak	16	Yes	Remove	Located on-site in development area
1226	Pear	4,4,3	Yes	Remove	Located on-site in development area
1227	Raywood ash	9	No	Remove	Located on-site in development area
1228	Pear	5,4,3	Yes	Remove	Located on-site in development area
1229	Pear	4,2,2	No	Remove	Located on-site in development area
1230	Pear	4,2,2	No	Remove	Located on-site in development area
1231	Almond	4	No	Remove	Located on-site in development area
1232	Almond	1,1,1	No	Remove	Located on-site in development area
1233	Glossy privet	2,2,1	No	Remove	Located on-site in development area
1234	Coast live oak	5	No	Remove	Located on-site in development area
1235	Holly oak	1,1	No	Remove	Located on-site in development area
1236	Coast live oak	11	No	Remove	Located on-site in development area
1237	Glossy privet	3,3,2	No	Remove	Located on-site in development area
1238	Coast live oak	4,4,4	Yes	Remove	Located on-site in development area
1239	Coast live oak	1	No	Remove	Located on-site in development area
1240	Coast live oak	12	Yes	Remove	Located on-site in development area
1241	Coast live oak	12	Yes	Remove	Located on-site in development area
1242	Coast live oak	7	No	Remove	Located on-site in development area
1243	Pear	4,3,3	Yes	Remove	Located on-site in development area
1244	Pear	4,3,3	Yes	Remove	Located on-site in development area
1245	Coast live oak	4,4,4	Yes	Remove	Located on-site in development area
1246	Pear	1,1,1	No	Remove	Located on-site in development area

1247	Olive	2,2,1	No	Remove	Located on-site in development area
1248	Coast live oak	2,1,1	No	Remove	Located on-site in development area
1249	Elderberry	5,3,2	Yes	Remove	Located on-site in development area
1250	Tree of heaven	7,6,6	Yes	Remove	Located on-site in development area
1251	Coast live oak	5,4	No	Remove	Located on-site in development area
1252	Pear	3,3,3	No	Remove	Located on-site in development area
1253	Olive	4,2,1	No	Remove	Located on-site in development area
1254	Coast live oak	9,4,4	Yes	Remove	Located on-site in development area
1255	Almond	5,3,2	No	Remove	Located on-site in development area
1256	Almond	3,3,2	Yes	Remove	Located on-site in development area
1257	Holly oak	1,1,1	No	Remove	Located on-site in development area
1258	Glossy privet	5,4	No	Remove	Located on-site in development area
1259	Coast live oak	10	No	Remove	Located on-site in development area
1260	Olive	1,1,1	No	Remove	Located on-site in development area
1261	Pear	4,2,2	Yes	Remove	Located on-site in development area
1262	Coast live oak	7,6,4	Yes	Remove	Located on-site in development area
1263	Coast live oak	5,3	No	Remove	Located on-site in development area
1264	Pear	3,3,3	Yes	Remove	Located on-site in development area
1265	Pear	4,3,3	Yes	Remove	Located on-site in development area
1266	Coast live oak	1,1	No	Remove	Located on-site in development area
1267	Coast live oak	2,1,1	No	Remove	Located on-site in development area
1268	Coast live oak	20,13,12	Yes	Remove	Located on-site in development area
1269	Coast live oak	6	No	Remove	Located on-site in development area
1270	Coast live oak	3	No	Remove	Located on-site in development area
1271	Coast live oak	3	No	Remove	Located on-site in development area
1272	Raywood ash	3	No	Remove	Located on-site in development area
1273	Coast live oak	1,1	No	Remove	Located on-site in development area
1274	Coast live oak	2	No	Remove	Located on-site in development area
1275	Pear	2,1,1	No	Remove	Located on-site in development area
1276	Glossy privet	2,1	No	Remove	Located on-site in development area
1277	Coast live oak	2,1,1	No	Remove	Located on-site in development area
1278	Coast live oak	6	No	Remove	Located on-site in development area
1279	Carolina cherry laurel	1,1,1	No	Remove	Located on-site in development area
1280	Olive	4,3,2	Yes	Remove	Located on-site in development area
1281	Coast live oak	5,5	No	Remove	Located on-site in development area
1282	Olive	4,2,1	No	Remove	Located on-site in development area
1283	Olive	3,1,1	No	Remove	Located on-site in development area
1284	Canyon live oak	1,1,1	No	Remove	Located on-site in development area
1285	Chinese pistache	1,1,1	No	Remove	Located on-site in development area
1286	Olive	4,3,3	Yes	Remove	Located on-site in development area
1287	Olive	3,3,2	Yes	Remove	Located on-site in development area
1288	Glossy privet	4,4,3	Yes	Remove	Located on-site in development area
1289	Pear	8	No	Remove	Located on-site in development area
1290	Coast live oak	7	No	Remove	Located on-site in development area
1291	Coast live oak	9,9	Yes	Remove	Located on-site in development area
1292	Holly oak	1,1,1	No	Remove	Located on-site in development area
1293	Coast live oak	1,1,1	No	Remove	Located on-site in development area
1294	Coast live oak	8,7	Yes	Remove	Located on-site in development area
1295	Coast live oak	9,8,3	Yes	Remove	Located on-site in development area
1296	Pear	6	No	Remove	Located on-site in development area
1297	Holly oak	7,5	Yes	Remove	Located on-site in development area
1298	Arizona ash	1	No	Remove	Located on-site in development area
1299	Arizona ash	3	No	Remove	Located on-site in development area
1300	Coast live oak	4,3,3	Yes	Remove	Located on-site in development area
1301	Coast live oak	16	Yes	Remove	Located on-site in development area
1302	California bay	1,1,1	No	Remove	Located on-site in development area
1303	California bay	3,2,2	Yes	Remove	Located on-site in development area
1304	California black walnut	3	No	Remove	Located on-site in development area
1305	Coast live oak	13,12	Yes	Remove	Located on-site in development area
1306	Almond	6,5,5	Yes	Remove	Located on-site in development area
1307	Coast live oak	2,2,1	No	Remove	Located on-site in development area
1308	Elderberry	4,4,4	Yes	Remove	Located on-site in development area
1309	Elderberry	2,1,1	No	Remove	Located on-site in development area
1310	Coast live oak	3,3,3	No	Remove	Located on-site in development area
1311	Coast live oak	11,10	Yes	Remove	Located on-site in development area
1312	Coast live oak	12	Yes	Remove	Located on-site in development area
1313	Coast live oak	7,6	Yes	Remove	Located on-site in development area
1314	Olive	3	No	Remove	Located on-site in development area
1315	Pear	3,2,2	Yes	Remove	Located on-site in development area
1316	Coast live oak	6,5,4	Yes	Remove	Located on-site in development area
1317	Coast live oak	8	No	Remove	Located on-site in development area
1318	California bay	1,1,1	No	Remove	Located on-site in development area
1319	Coast live oak	16	Yes	Remove	Located on-site in development area
1320	Coast live oak	8,6,6	Yes	Remove	Located on-site in development area
1321	Coast live oak	7,5,4	Yes	Remove	Located on-site in development area
1322	Coast live oak	4	No	Remove	Located on-site in development area
1323	California black walnut	2	No	Remove	Located on-site in development area
1324	Coast live oak	1	No	Remove	Located on-site in development area
1325	Coast live oak	1,1	No	Remove	Located on-site in development area
1326	Coast live oak	2	No	Remove	Located on-site in development area
1327	Coast live oak	1	No	Remove	Located on-site in development area
1328	Coast live oak	1,1	No	Remove	Located on-site in development area
1329	Coast live oak	9,5	Yes	Remove	Located on-site in development area
1330	Coast live oak	12	Yes	Remove	Located on-site in development area

1331	California black walnut	5,3	No	Remove	Located on-site in development area
1332	Red ironbark	23	Yes	Preserve	Located off-site outside development area
1333	Chinese pistache	1,1	No	Remove	Located on-site in development area
1334	Red ironbark	18	Yes	Preserve	Located off-site outside development area
1335	Red ironbark	10	No	Preserve	Located off-site outside development area
1336	Red ironbark	26	Yes	Preserve	Located off-site outside development area
1337	Red ironbark	15	Yes	Preserve	Located off-site outside development area
1338	Red ironbark	23	Yes	Preserve	Located off-site outside development area
1339	Red ironbark	27	Yes	Preserve	Located off-site outside development area
1340	Pear	2,1	No	Remove	Located on-site in development area
1341	Glossy privet	4,2,1	No	Remove	Located on-site in development area
1342	Glossy privet	5,2,2	No	Remove	Located on-site in development area
1343	Coast live oak	10	No	Remove	Located on-site in development area
1344	Coast live oak	4	No	Remove	Located on-site in development area
1345	Coast live oak	9,7	Yes	Remove	Located on-site in development area
1346	Elderberry	10,8,6	Yes	Remove	Located on-site in development area
1347	California black walnut	1	No	Remove	Located on-site in development area
1348	California black walnut	1	No	Remove	Located on-site in development area
1349	Coast live oak	1	No	Preserve	Located off-site outside development area
1350	Escallonia	1,1,1	No	Preserve	Located off-site outside development area
1351	Raywood ash	15	Yes	Preserve	Located off-site outside development area
1352	Raywood ash	15	Yes	Preserve	Located off-site outside development area
1353	Escallonia	1,1,1	No	Preserve	Located off-site outside development area
1354	Escallonia	1,1,1	No	Preserve	Located off-site outside development area
1355	Escallonia	1,1,1	No	Preserve	Located off-site outside development area
1356	Coast live oak	2	No	Preserve	Located off-site outside development area
1357	Raywood ash	4,3,3	No	Preserve	Located off-site outside development area
1358	Coast live oak	5	No	Preserve	Located off-site outside development area
1359	Italian buckthorn	2,1,1	No	Preserve	Located off-site outside development area
1360	Raywood ash	14	Yes	Preserve	Located off-site outside development area
1361	Escallonia	1,1,1	No	Preserve	Located off-site outside development area
1362	Coast live oak	1	No	Remove	Located on-site in development area
1363	Coast live oak	2,1	No	Preserve	Located off-site outside development area
1364	Escallonia	3,3,2	Yes	Preserve	Located off-site outside development area
1365	Escallonia	1,1,1	No	Preserve	Located off-site outside development area
1366	Raywood ash	1,1	No	Remove	Located on-site in development area
1367	Escallonia	3,3,2	Yes	Preserve	Located off-site outside development area
1368	Arizona ash	3,3,2	Yes	Remove	Located on-site in development area
1369	Arizona ash	2	No	Remove	Located on-site in development area
1370	Escallonia	3,3,2	Yes	Preserve	Located off-site outside development area
1371	Arizona ash	17	Yes	Preserve	Located off-site outside development area
1372	Coast live oak	2	No	Preserve	Located off-site outside development area
1373	Escallonia	2,2,2	No	Preserve	Located off-site outside development area
1374	Arizona ash	7,7,5	Yes	Preserve	Located off-site outside development area
1375	Arizona ash	7,7,5	Yes	Preserve	Located off-site outside development area
1376	Escallonia	1,1,1	No	Preserve	Located off-site outside development area
1377	Escallonia	1,1,1	No	Preserve	Located off-site outside development area
1378	Raywood ash	10	No	Preserve	Located off-site outside development area
1379	Escallonia	1,1,1	No	Preserve	Located off-site outside development area
1380	Escallonia	1,1,1	No	Preserve	Located off-site outside development area

1381	Coast live oak	3	No	Preserve	Located off-site outside development area
1382	Coast live oak	3	No	Preserve	Located off-site outside development area

San Jose Replacement Calculations

681 East Trimble and adjacent vacant lot
San Jose, CA
October 2021

Tree No.	Species	Trunk Diameter (in.)	Circumference	Ordinance Size?	Disposition	Provenance	Replacement Trees
1	Mexican fan palm	14	44	Yes	Remove	Non-native	4
2	Purpleleaf plum	4	13	No	Remove	Non-native	1
3	Purpleleaf plum	4	13	No	Remove	Non-native	1
4	Butterfly bush	3,3,3	28	No	Remove	Non-native	2
5	Cherry	5,4,4	41	Yes	Remove	Orchard	3
6	Pear	4,3	22	No	Remove	Orchard	0
7	Pear	2,2,1	16	No	Remove	Orchard	0
8	Pear	1,1	6	No	Remove	Orchard	0
9	Pear	4	13	No	Remove	Orchard	0
10	Glossy privet	5,4,4	41	Yes	Remove	Non-native	4
11	Glossy privet	3,2,2	22	No	Remove	Non-native	2
12	Pear	4,4,3	35	No	Remove	Orchard	0
13	California black walnut	1,1,1	9	No	Remove	Orchard	0
14	Glossy privet	4,3,3	31	No	Remove	Non-native	2
15	Coast live oak	1	3	No	Remove	Native	1
16	California black walnut	3,2,2	22	No	Remove	Orchard	0
17	Coast live oak	3	9	No	Remove	Native	1
18	Chestnut	8,7,7	69	Yes	Remove	Orchard	3
19	Glossy privet	1,1,1	9	No	Remove	Non-native	1
20	Glossy privet	1	3	No	Remove	Non-native	1
21	Cherry	4	13	No	Remove	Orchard	0
22	Chestnut	12,10,7	91	Yes	Remove	Orchard	3
23	Chestnut	3,3,2	25	No	Remove	Orchard	0
24	Coast live oak	4,2,2	25	No	Remove	Native	3
25	Pear	6,6,3	47	Yes	Remove	Orchard	3
26	Coast live oak	6,4	31	No	Remove	Native	3
27	Cherry	2,1,1	13	No	Remove	Orchard	0
28	Chestnut	7,6,5	57	Yes	Remove	Orchard	3
29	Coast live oak	12,10,8	94	Yes	Remove	Native	5
30	Pear	12,10,6	88	Yes	Remove	Orchard	3
31	Coast live oak	2	6	No	Remove	Native	1
32	Pear	3,3,2	25	No	Remove	Orchard	0
33	Glossy privet	3,2,2	22	No	Remove	Non-native	2
34	Pear	4,4,4	38	No	Remove	Orchard	3
35	Pear	3,2,2	22	No	Remove	Orchard	0
36	Apple	7,4,4	47	Yes	Remove	Orchard	3
37	Coast live oak	25,5	94	Yes	Remove	Native	5
38	Cherry	3,2,2	22	No	Remove	Orchard	0
39	Coast live oak	1	3	No	Remove	Native	1
40	Chestnut	6,6,6	57	Yes	Remove	Orchard	3
41	Coast live oak	8	25	No	Remove	Native	3
42	Coast live oak	6	19	No	Remove	Native	3
43	California black walnut	1	3	No	Remove	Orchard	0
44	Coast live oak	1,1	6	No	Remove	Native	1
45	Coast live oak	1	3	No	Remove	Native	1
46	Chestnut	7,6,4	53	Yes	Remove	Orchard	3
47	Coast live oak	10	31	No	Remove	Native	3
48	California black walnut	3,2	16	No	Remove	Orchard	0
49	California black walnut	3	9	No	Remove	Orchard	0
50	California black walnut	6,6,5	53	Yes	Remove	Orchard	3
51	Coast live oak	16,14,14	138	Yes	Remove	Native	5
52	Coast live oak	6,2	25	No	Remove	Native	3
53	Coast live oak	4,3,2	28	No	Remove	Native	3
54	Coast live oak	2,2	13	No	Remove	Native	1
55	California black walnut	12,12,12	113	Yes	Remove	Orchard	3
56	Glossy privet	1,1,1	9	No	Remove	Non-native	1
57	Tree of heaven	4,3	22	No	Remove	Non-native	2
58	Tree of heaven	4	13	No	Remove	Non-native	1
59	Tree of heaven	5	16	No	Remove	Non-native	1
60	Tree of heaven	8,6	44	Yes	Remove	Non-native	4
61	Tree of heaven	2	6	No	Remove	Non-native	1
62	Coast live oak	1	3	No	Remove	Native	1
63	Almond	5,4,4	41	Yes	Remove	Orchard	3
64	Glossy privet	2,2,2	19	No	Remove	Non-native	2
65	Coast live oak	12,10	69	Yes	Remove	Native	5
66	Tree of heaven	18	57	Yes	Remove	Non-native	4
67	Tree of heaven	4,4,4	38	No	Remove	Non-native	4
68	Tree of heaven	3,3	19	No	Remove	Non-native	2
69	California black walnut	7,6,6	60	Yes	Remove	Orchard	3
70	California black walnut	6,5,4	47	Yes	Remove	Orchard	3
71	Coast live oak	1	3	No	Remove	Native	1
72	Cherry	1,1	6	No	Remove	Orchard	0
73	Cherry	4,3	22	No	Remove	Orchard	0
74	Cherry	1,1,1	9	No	Remove	Orchard	0
75	Glossy privet	1,1,1	9	No	Remove	Non-native	1
76	Coast live oak	18,16,12	144	Yes	Remove	Native	5
77	Glossy privet	4,2,1	22	No	Remove	Non-native	2
78	Glossy privet	2,2,2	19	No	Remove	Non-native	2
79	Chestnut	14,8,4	82	Yes	Remove	Orchard	3
80	Chestnut	20	63	Yes	Remove	Orchard	3
81	Avocado	16,14	94	Yes	Remove	Orchard	3
82	Bamboo	1,1,1	9	No	Remove	Non-native	1
83	Coast live oak	23	72	Yes	Remove	Native	5
84	Glossy privet	6	19	No	Remove	Non-native	2
85	Glossy privet	16	50	Yes	Remove	Non-native	4
86	Pomegranate	8,4,3	47	Yes	Remove	Orchard	3
87	Almond	3,3,3	28	No	Remove	Orchard	0
88	Glossy privet	1,1,1	9	No	Remove	Non-native	1
89	Glossy privet	8,7,6	66	Yes	Remove	Non-native	4
90	Glossy privet	1,1,1	9	No	Remove	Non-native	1
91	Almond	6,5,5	50	Yes	Remove	Orchard	3
92	Almond	6,4,4	44	Yes	Remove	Orchard	3
93	Almond	6,5,5	50	Yes	Remove	Orchard	3
94	Glossy privet	2,2,2	19	No	Remove	Non-native	2
95	Almond	12,2,2	50	Yes	Remove	Orchard	3

		City Replacement ratios			
Diameter	Circumference	Native	Non-native	Orchard	
12+	>37.6	5	4	3	
6<>12	18.8<>37.6	3	2	0	
<6	<18.8	1	1	0	
		Native	Non-native	Orchard	Total
12+	>37.6	52	40	169	261
6<>12	18.8<>37.6	35	42	97	174
<6	<18.8	42	47	60	149
Total		129	129	326	584
		Native	Non-native	Orchard	Total
12+	>37.6	260	160	507	927
6<>12	18.8<>37.6	105	84	0	189
<6	<18.8	42	47	0	89
Total		407	291	507	1205

96	Almond	6,5,4	47	Yes	Remove	Orchard	3
97	Almond	6,5,5	50	Yes	Remove	Orchard	3
98	Glossy privet	1,1,1	9	No	Remove	Non-native	1
99	Almond	6,5,5	50	Yes	Remove	Orchard	3
100	Glossy privet	3,3,2	25	No	Remove	Non-native	2
101	Persimmon	8,8,7	72	Yes	Remove	Orchard	3
102	Persimmon	7,7,4	57	Yes	Remove	Orchard	3
103	Persimmon	8,6	44	Yes	Remove	Orchard	3
104	Persimmon	7,7,4	57	Yes	Remove	Orchard	3
105	Persimmon	8,6	44	Yes	Remove	Orchard	3
106	Persimmon	8,7,4	60	Yes	Remove	Orchard	3
107	Persimmon	10,4	44	Yes	Remove	Orchard	3
108	Persimmon	10	31	No	Remove	Orchard	0
109	Persimmon	7,3,3	41	Yes	Remove	Orchard	3
110	Persimmon	8,5	41	Yes	Remove	Orchard	3
111	Persimmon	9,1	31	No	Remove	Orchard	0
112	Persimmon	8,1,1	31	No	Remove	Orchard	0
113	Persimmon	9,3,1	41	Yes	Remove	Orchard	3
114	Persimmon	8,4,4	50	Yes	Remove	Orchard	3
115	Persimmon	6,6,5	53	Yes	Remove	Orchard	3
116	Persimmon	8,5,5	57	Yes	Remove	Orchard	3
117	Persimmon	7,6,5	57	Yes	Remove	Orchard	3
118	Persimmon	7,6,4	53	Yes	Remove	Orchard	3
119	Persimmon	8,6	44	Yes	Remove	Orchard	3
120	Persimmon	8,7,5	63	Yes	Remove	Orchard	3
121	Persimmon	8,2,2	38	No	Remove	Orchard	3
122	Persimmon	7,5,3	47	Yes	Remove	Orchard	3
123	Persimmon	6,4,2	38	No	Remove	Orchard	3
124	Persimmon	8,6	44	Yes	Remove	Orchard	3
125	Persimmon	6,6,5	53	Yes	Remove	Orchard	3
126	Persimmon	7,6,4	53	Yes	Remove	Orchard	3
127	Persimmon	8,5,4	53	Yes	Remove	Orchard	3
128	Persimmon	7,4	35	No	Remove	Orchard	0
129	Persimmon	8,3,2	41	Yes	Remove	Orchard	3
130	Persimmon	8,7	47	Yes	Remove	Orchard	3
131	Persimmon	5,5,4	44	Yes	Remove	Orchard	3
132	Persimmon	9	28	No	Remove	Orchard	0
133	Persimmon	8,6,3	53	Yes	Remove	Orchard	3
134	Persimmon	6,5,5	50	Yes	Remove	Orchard	3
135	Persimmon	7,6,5	57	Yes	Remove	Orchard	3
136	Persimmon	7,4,2	41	Yes	Remove	Orchard	3
137	Persimmon	7,6	41	Yes	Remove	Orchard	3
138	Persimmon	7,5	38	No	Remove	Orchard	3
139	Persimmon	6,6,3	47	Yes	Remove	Orchard	3
140	Persimmon	9	28	No	Remove	Orchard	0
141	Persimmon	7,5,1	41	Yes	Remove	Orchard	3
142	Persimmon	8,3,2	41	Yes	Remove	Orchard	3
143	Persimmon	8,5	41	Yes	Remove	Orchard	3
144	Persimmon	7,7,5	60	Yes	Remove	Orchard	3
145	Persimmon	7,5,4	50	Yes	Remove	Orchard	3
146	Persimmon	7,6,3	50	Yes	Remove	Orchard	3
147	Persimmon	6,6,4	50	Yes	Remove	Orchard	3
148	Persimmon	9,4,4	53	Yes	Remove	Orchard	3
149	Persimmon	6,6,3	47	Yes	Remove	Orchard	3
150	Persimmon	7,6,2	47	Yes	Remove	Orchard	3
151	Persimmon	8,2,2	38	No	Remove	Orchard	3
152	Persimmon	8,1	28	No	Remove	Orchard	0
153	Persimmon	5,5	31	No	Remove	Orchard	0
154	Persimmon	7,5,5	53	Yes	Remove	Orchard	3
155	Persimmon	7,5,2	44	Yes	Remove	Orchard	3
156	Persimmon	8,7,6	66	Yes	Remove	Orchard	3
157	Persimmon	8	25	No	Remove	Orchard	0
158	Persimmon	7,6,6	60	Yes	Remove	Orchard	3
159	Persimmon	7,7,3	53	Yes	Remove	Orchard	3
160	Persimmon	8,5,2	47	Yes	Remove	Orchard	3
161	Persimmon	7,6,1	44	Yes	Remove	Orchard	3
162	Persimmon	9,4	41	Yes	Remove	Orchard	3
163	Persimmon	8,4,3	47	Yes	Remove	Orchard	3
164	Persimmon	7,4,3	44	Yes	Remove	Orchard	3
165	Persimmon	7,6,6	60	Yes	Remove	Orchard	3
166	Persimmon	7,6,4	53	Yes	Remove	Orchard	3
167	Persimmon	7,6,1	44	Yes	Remove	Orchard	3
168	Persimmon	6,5,4	47	Yes	Remove	Orchard	3
169	Persimmon	7,6,5	57	Yes	Remove	Orchard	3
170	Persimmon	6,2,2	31	No	Remove	Orchard	0
171	Persimmon	6,3,2	35	No	Remove	Orchard	0
172	Persimmon	6,6	38	No	Remove	Orchard	3
173	Persimmon	6,6	38	No	Remove	Orchard	3
174	Persimmon	8	25	No	Remove	Orchard	0
175	Persimmon	7,4,4	47	Yes	Remove	Orchard	3
176	Persimmon	6,6	38	No	Remove	Orchard	3
177	Persimmon	7,5,3	47	Yes	Remove	Orchard	3
178	Persimmon	6,5,2	41	Yes	Remove	Orchard	3
179	Persimmon	7,2,2	35	No	Remove	Orchard	0
180	Persimmon	8	25	No	Remove	Orchard	0
181	Persimmon	8,3	35	No	Remove	Orchard	0
182	Persimmon	7,7	44	Yes	Remove	Orchard	3
183	Persimmon	6,6,4	50	Yes	Remove	Orchard	3
184	Persimmon	5,4,4	41	Yes	Remove	Orchard	3
185	Persimmon	7,5,3	47	Yes	Remove	Orchard	3
186	Persimmon	6,6,4	50	Yes	Remove	Orchard	3
187	Persimmon	6,6,5	53	Yes	Remove	Orchard	3
188	Persimmon	6,4,2	38	No	Remove	Orchard	3
189	Persimmon	6,4,4	44	Yes	Remove	Orchard	3
190	Persimmon	7	22	No	Remove	Orchard	0
191	Persimmon	6,4	31	No	Remove	Orchard	0
192	Persimmon	6,5,2	41	Yes	Remove	Orchard	3
193	Persimmon	7,6,5	57	Yes	Remove	Orchard	3
194	Persimmon	7,4,3	44	Yes	Remove	Orchard	3
195	Persimmon	7,4,3	44	Yes	Remove	Orchard	3
196	Persimmon	5,5,3	41	Yes	Remove	Orchard	3
197	Persimmon	8,3,2	41	Yes	Remove	Orchard	3
198	Persimmon	6,5,3	44	Yes	Remove	Orchard	3
199	Persimmon	7,4,3	44	Yes	Remove	Orchard	3
200	Persimmon	4,3,3	31	No	Remove	Orchard	0

201	Persimmon	7,5,5	53	Yes	Remove	Orchard	3
202	Persimmon	8,6,6	63	Yes	Remove	Orchard	3
203	Persimmon	11,9,8	88	Yes	Remove	Orchard	3
204	Persimmon	6,4,4	44	Yes	Remove	Orchard	3
205	Plum	1,1,1	9	No	Remove	Orchard	0
206	Pear	3,3,2	25	No	Remove	Orchard	0
207	Plum	2,2,2	19	No	Remove	Orchard	0
208	Almond	5,3,2	31	No	Remove	Orchard	0
209	Persimmon	9,2	35	No	Remove	Orchard	0
210	Cherry	4,4,4	38	No	Remove	Orchard	3
211	Pear	4,4,3	35	No	Remove	Orchard	0
212	Cherry	3,3,3	28	No	Remove	Orchard	0
213	Pear	4,4,4	38	No	Remove	Orchard	3
214	Glossy privet	3,3,3	28	No	Remove	Non-native	2
215	Pear	4,4,4	38	No	Remove	Orchard	3
216	Avocado	7,4,3	44	Yes	Remove	Orchard	3
217	Avocado	6,6,4	50	Yes	Remove	Orchard	3
218	Avocado	7	22	No	Remove	Orchard	0
219	Avocado	7,5,4	50	Yes	Remove	Orchard	3
220	Avocado	7	22	No	Remove	Orchard	0
221	Pear	3,2	16	No	Remove	Orchard	0
222	Banana	3,3,3	28	No	Remove	Orchard	0
223	Pear	4,4,3	35	No	Remove	Orchard	0
224	Pear	5	16	No	Remove	Orchard	0
225	Loquat	6,5,4	47	Yes	Remove	Orchard	3
226	Glossy privet	1,1,1	9	No	Remove	Non-native	1
227	Pecan	18	57	Yes	Remove	Orchard	3
228	Avocado	1	3	No	Remove	Orchard	0
229	Pear	7,5,4	50	Yes	Remove	Orchard	3
230	California black walnut	15	47	Yes	Remove	Orchard	3
231	Siberian elm	12,12,8	100	Yes	Remove	Non-native	4
232	Siberian elm	13,8,8	91	Yes	Remove	Non-native	4
233	European hackberry	33	104	Yes	Remove	Non-native	4
234	Persimmon	9,5,3	53	Yes	Remove	Orchard	3
235	Fig	3,3,3	28	No	Remove	Orchard	0
236	Persimmon	8,7	47	Yes	Remove	Orchard	3
237	Cherry	11,9,9	91	Yes	Remove	Orchard	3
238	Cherry	6,4,1	35	No	Remove	Orchard	0
239	Cherry	4,3,3	31	No	Remove	Orchard	0
240	Cherry	11	35	No	Remove	Orchard	0
241	Siberian elm	4,3,2	28	No	Remove	Non-native	2
242	Orange	4,3,3	31	No	Remove	Orchard	0
243	Coast live oak	6	19	No	Remove	Native	3
244	Cherry	4	13	No	Remove	Orchard	0
245	Holly oak	8,6,5	60	Yes	Remove	Non-native	4
246	Holly oak	8,5,3	50	Yes	Remove	Non-native	4
247	Cherry	4,4,4	38	No	Remove	Orchard	3
248	California black walnut	3	9	No	Remove	Orchard	0
249	Chinese pistache	9	28	No	Remove	Non-native	2
250	Avocado	2	6	No	Remove	Orchard	0
251	Plum	8	25	No	Remove	Orchard	0
252	Orange	4,4,4	38	No	Remove	Orchard	3
253	Plum	3,2,2	22	No	Remove	Orchard	0
254	Plum	2,1	9	No	Remove	Orchard	0
255	Avocado	5,4	28	No	Remove	Orchard	0
256	Heavenly bamboo	1,1,1	9	No	Remove	Non-native	1
257	Tangerine	1,1,1	9	No	Remove	Orchard	0
258	Orange	1,1,1	9	No	Remove	Orchard	0
259	Glossy privet	8,7	47	Yes	Remove	Non-native	4
260	Orange	9,6,4	60	Yes	Remove	Orchard	3
261	Pomegranate	7,7,5	60	Yes	Remove	Orchard	3
262	Lemon	2	6	No	Remove	Orchard	0
263	Cabbage palm	10,8,8	82	Yes	Remove	Non-native	4
264	Avocado	1	3	No	Remove	Orchard	0
265	Avocado	2,2,2	19	No	Remove	Orchard	0
266	California black walnut	21,20	129	Yes	Remove	Orchard	3
267	California black walnut	18	57	Yes	Remove	Orchard	3
268	Glossy privet	7,6,6	60	Yes	Remove	Non-native	4
269	Glossy privet	8,7,6	66	Yes	Remove	Non-native	4
270	Glossy privet	9	28	No	Remove	Non-native	2
271	Fig	6,6	38	No	Remove	Orchard	3
272	Fig	8,6,3	53	Yes	Remove	Orchard	3
273	Fig	12	38	No	Remove	Orchard	3
274	Avocado	6,1	22	No	Remove	Orchard	0
275	Avocado	12,9	66	Yes	Remove	Orchard	3
276	Fig	8,7,4	60	Yes	Remove	Orchard	3
277	Almond	10	31	No	Remove	Orchard	0
278	Chestnut	15,8	72	Yes	Remove	Orchard	3
279	Cherry	8,6,3	53	Yes	Remove	Orchard	3
280	Glossy privet	10,10	63	Yes	Remove	Non-native	4
281	Glossy privet	1,1	6	No	Remove	Non-native	1
282	Chestnut	2,2	13	No	Remove	Orchard	0
283	Chestnut	20	63	Yes	Remove	Orchard	3
284	Chestnut	12,9,8	91	Yes	Remove	Orchard	3
285	Glossy privet	1,1,1	9	No	Remove	Non-native	1
286	Glossy privet	3,3,2	25	No	Remove	Non-native	2
287	Plum	6,6,4	50	Yes	Remove	Orchard	3
288	Chestnut	6,5,4	47	Yes	Remove	Orchard	3
289	Almond	6,6,4	50	Yes	Remove	Orchard	3
290	Almond	6,6,4	50	Yes	Remove	Orchard	3
291	Glossy privet	3,3,3	28	No	Remove	Non-native	2
292	Glossy privet	2,2,1	16	No	Remove	Non-native	1
293	Glossy privet	7,6,3	50	Yes	Remove	Non-native	4
294	Glossy privet	2,2,2	19	No	Remove	Non-native	2
295	Glossy privet	4,3,3	31	No	Remove	Non-native	2
296	Glossy privet	3,3,3	28	No	Remove	Non-native	2
297	Avocado	1,1,1	9	No	Remove	Orchard	0
298	Almond	7,6,6	60	Yes	Remove	Orchard	3
299	Almond	4,3,3	31	No	Remove	Orchard	0
300	Almond	1,1,1	9	No	Remove	Orchard	0
301	Chestnut	18,12,8	119	Yes	Remove	Orchard	3
302	Fig	1	3	No	Remove	Orchard	0
303	Fig	1	3	No	Remove	Orchard	0
304	Orange	1,1,1	9	No	Remove	Orchard	0
305	Fig	2,2,2	19	No	Remove	Orchard	0

306	Chestnut	14,12,10	113	Yes	Remove	Orchard	3
307	Apple	6,5,4	47	Yes	Remove	Orchard	3
308	Pear	3,2,2	22	No	Remove	Orchard	0
309	Apple	2,2,2	19	No	Remove	Orchard	0
310	Apple	2,2,1	16	No	Remove	Orchard	0
311	Apple	1,1,1	9	No	Remove	Orchard	0
312	Chestnut	18	57	Yes	Remove	Orchard	3
313	Fig	8,6,4	57	Yes	Remove	Orchard	3
314	Coast live oak	3,1	13	No	Remove	Native	1
315	Coast live oak	8,7,7	69	Yes	Remove	Native	5
316	California black walnut	12,11	72	Yes	Remove	Orchard	3
317	Glossy privet	3,2,1	19	No	Remove	Non-native	2
318	Coast live oak	7,5,4	50	Yes	Remove	Native	5
319	California black walnut	6,5	35	No	Remove	Orchard	0
320	Coast live oak	11	35	No	Remove	Native	3
321	Fig	4	13	No	Remove	Orchard	0
322	Fig	9	28	No	Remove	Orchard	0
323	Italian buckthorn	6,4,3	41	Yes	Remove	Non-native	4
324	Italian buckthorn	10,8	57	Yes	Remove	Non-native	4
325	Italian buckthorn	6,4,3	41	Yes	Remove	Non-native	4
326	Olive	6,4,3	41	Yes	Remove	Orchard	3
327	Mexican fan palm	30	94	Yes	Remove	Non-native	4
328	Tree of heaven	2	6	No	Remove	Non-native	1
329	Holly oak	4,3,2	28	No	Remove	Non-native	2
330	Coast live oak	13,11	75	Yes	Remove	Native	5
331	Coast live oak	16,12	88	Yes	Remove	Native	5
333	Coast live oak	3	9	No	Remove	Native	1
334	Coast live oak	12,12,10	107	Yes	Remove	Native	5
335	Coast live oak	10,8,4	69	Yes	Remove	Native	5
336	Coast live oak	4	13	No	Remove	Native	1
337	Coast live oak	20,18,17	173	Yes	Remove	Native	5
338	Tree of heaven	14	44	Yes	Remove	Non-native	4
339	Coast live oak	4,3,3	31	No	Remove	Native	3
340	Tree of heaven	1	3	No	Remove	Non-native	1
341	Coast live oak	18	57	Yes	Remove	Native	5
342	California black walnut	12,6,4	69	Yes	Remove	Orchard	3
343	California black walnut	3,2,2	22	No	Remove	Orchard	0
344	Tree of heaven	5,1	19	No	Remove	Non-native	2
345	Tree of heaven	4,3	22	No	Remove	Non-native	2
346	Tree of heaven	3	9	No	Remove	Non-native	1
347	Tree of heaven	4	13	No	Remove	Non-native	1
348	Tree of heaven	1	3	No	Remove	Non-native	1
349	Cherry	6	19	No	Remove	Orchard	0
350	Deodar cedar	36	113	Yes	Remove	Non-native	4
351	Cherry	7,7,7	66	Yes	Remove	Orchard	3
352	Plum	4,3,3	31	No	Remove	Orchard	0
353	Plum	1,1,1	9	No	Remove	Orchard	0
354	California black walnut	12,8,8	88	Yes	Remove	Orchard	3
355	Orange	7,6,4	53	Yes	Remove	Orchard	3
356	California black walnut	17	53	Yes	Remove	Orchard	3
357	Coast live oak	14	44	Yes	Remove	Native	5
358	California black walnut	24,18,16	182	Yes	Remove	Orchard	3
359	Chestnut	12	38	No	Remove	Orchard	3
360	Evergreen ash	18,18,16	163	Yes	Remove	Non-native	4
361	Glossy privet	6,6,4	50	Yes	Remove	Non-native	4
362	Bottlebrush	6,6,6	57	Yes	Remove	Non-native	4
363	Coast live oak	4,4,3	35	No	Remove	Native	3
364	Almond	3,3,3	28	No	Remove	Orchard	0
365	Almond	3,3,3	28	No	Remove	Orchard	0
366	Holly oak	8,1,1	31	No	Remove	Non-native	2
367	Tree of heaven	1,1,1	9	No	Remove	Non-native	1
368	Glossy privet	4,4,4	38	No	Remove	Non-native	4
369	Apple	4	13	No	Remove	Orchard	0
370	Apple	4	13	No	Remove	Orchard	0
371	European hackberry	12,12,12	113	Yes	Remove	Non-native	4
372	Plum	1,1,1	9	No	Remove	Orchard	0
373	Apple	5	16	No	Remove	Orchard	0
374	Almond	1,1,1	9	No	Remove	Orchard	0
375	Coast live oak	2,1	9	No	Remove	Native	1
376	Tree of heaven	4,3,3	31	No	Remove	Non-native	2
377	Glossy privet	4,3,3	31	No	Remove	Non-native	2
378	Glossy privet	1,1,1	9	No	Remove	Non-native	1
379	Tree of heaven	14,10,10	107	Yes	Remove	Non-native	4
380	Tree of heaven	8,6,6	63	Yes	Remove	Non-native	4
381	Tree of heaven	10,10,8	88	Yes	Remove	Non-native	4
382	Tree of heaven	3,2,2	22	No	Remove	Non-native	2
383	Tree of heaven	6,4,4	44	Yes	Remove	Non-native	4
384	Coast live oak	3	9	No	Remove	Native	1
385	California black walnut	18,17	110	Yes	Remove	Orchard	3
386	California black walnut	4	13	No	Remove	Orchard	0
387	California black walnut	11,11,8	94	Yes	Remove	Orchard	3
388	California black walnut	12,12,10	107	Yes	Remove	Orchard	3
389	Mexican fan palm	14	44	Yes	Remove	Non-native	4
390	Fig	10,9	60	Yes	Remove	Orchard	3
391	Loquat	2,2,1	16	No	Remove	Orchard	0
401	Mexican fan palm	17	53	Yes	Remove	Non-native	4
406	Holly oak	10,8	57	Yes	Remove	Non-native	4
432	Italian buckthorn	3,3,2	25	No	Remove	Non-native	2
443	Coast live oak	20,11	97	Yes	Remove	Native	5
453	Italian buckthorn	3	9	No	Remove	Non-native	1
456	Italian buckthorn	3,1	13	No	Remove	Non-native	1
464	Italian buckthorn	2,1	9	No	Remove	Non-native	1
466	Italian buckthorn	6,4,3	41	Yes	Remove	Non-native	4
477	Glossy privet	5,4,4	41	Yes	Remove	Non-native	4
478	Holly oak	6,4	31	No	Remove	Non-native	2
479	Raywood ash	3	9	No	Remove	Non-native	1
480	Holly oak	5	16	No	Remove	Non-native	1
499	Raywood ash	2	6	No	Remove	Non-native	1
1164	California black walnut	1	3	No	Remove	Orchard	0
1165	California black walnut	3,3,2	25	No	Remove	Orchard	0
1166	California black walnut	4,4,4	38	No	Remove	Orchard	3
1167	California black walnut	5,5,5	47	Yes	Remove	Orchard	3
1168	Coast live oak	5	16	No	Remove	Native	1
1169	Elderberry	14,8,6	88	Yes	Remove	Native	5
1170	Elderberry	9,8,8	79	Yes	Remove	Native	5

1171	Glossy privet	4,4,3	35	No	Remove	Non-native	2
1172	Coast live oak	3,2,1	19	No	Remove	Native	3
1173	Raywood ash	6,3	28	No	Remove	Non-native	2
1174	Coast live oak	5,4,4	41	Yes	Remove	Native	5
1175	Chinese pistache	3	9	No	Remove	Non-native	1
1176	Glossy privet	3,2,1	19	No	Remove	Non-native	2
1177	Elderberry	6,5,5	50	Yes	Remove	Native	5
1178	Glossy privet	4,3,3	31	No	Remove	Non-native	2
1179	Pear	3,2,1	19	No	Remove	Orchard	0
1180	Pear	3,2,2	22	No	Remove	Orchard	0
1181	Pear	3,3,3	28	No	Remove	Orchard	0
1182	Coast live oak	12	38	Yes	Remove	Native	5
1183	Pear	4,3,2	28	No	Remove	Orchard	0
1184	Pear	2,2	13	No	Remove	Orchard	0
1185	Coast live oak	9	28	No	Remove	Native	3
1186	Pear	3,2,2	22	No	Remove	Orchard	0
1187	Coast live oak	9	28	No	Remove	Native	3
1188	Pear	2,2,2	19	No	Remove	Orchard	0
1189	Olive	1,1,1	9	No	Remove	Orchard	0
1190	Pear	4,3	22	No	Remove	Orchard	0
1191	Pear	4,3	22	No	Remove	Orchard	0
1192	Pear	4,3,3	31	No	Remove	Orchard	0
1193	Coast live oak	6,5,4	47	Yes	Remove	Native	5
1194	Coast live oak	4,4,3	35	No	Remove	Native	3
1195	Coast live oak	16	50	Yes	Remove	Native	5
1196	Pear	3,2	16	No	Remove	Orchard	0
1197	Coast live oak	6	19	No	Remove	Native	3
1198	Coast live oak	3	9	No	Remove	Native	1
1199	Pear	3	9	No	Remove	Orchard	0
1200	Coast live oak	11	35	No	Remove	Native	3
1201	Coast live oak	13	41	Yes	Remove	Native	5
1202	Coast live oak	13	41	Yes	Remove	Native	5
1203	Pear	3,3,2	25	No	Remove	Orchard	0
1204	Olive	1,1,1	9	No	Remove	Orchard	0
1205	Coast live oak	11	35	No	Remove	Native	3
1206	California black walnut	6,4,4	44	Yes	Remove	Orchard	3
1207	Pear	3,2,2	22	No	Remove	Orchard	0
1208	California black walnut	3,2,2	22	No	Remove	Orchard	0
1209	Coast live oak	4,3,3	31	No	Remove	Native	3
1210	Pear	4,3,3	31	No	Remove	Orchard	0
1211	Pear	6,2,2	31	No	Remove	Orchard	0
1212	Coast live oak	6,5,3	44	Yes	Remove	Native	5
1213	Arizona ash	3	9	No	Remove	Non-native	1
1215	Coast live oak	5	16	No	Remove	Native	1
1216	Coast live oak	16	50	Yes	Remove	Native	5
1217	Pear	2,1,1	13	No	Remove	Orchard	0
1218	Coast live oak	2,1,1	13	No	Remove	Native	1
1219	Raywood ash	3	9	No	Remove	Non-native	1
1220	Pear	5,4,4	41	Yes	Remove	Orchard	3
1221	Coast live oak	10	31	No	Remove	Native	3
1222	Pear	4,3,1	25	No	Remove	Orchard	0
1223	Pear	4,3,2	28	No	Remove	Orchard	0
1224	Pear	4,4,3	35	No	Remove	Orchard	0
1225	Coast live oak	16	50	Yes	Remove	Native	5
1226	Pear	4,4,3	35	No	Remove	Orchard	0
1227	Raywood ash	9	28	No	Remove	Non-native	2
1228	Pear	5,4,3	38	No	Remove	Orchard	3
1229	Pear	4,2,2	25	No	Remove	Orchard	0
1230	Pear	4,2,2	25	No	Remove	Orchard	0
1231	Almond	4	13	No	Remove	Orchard	0
1232	Almond	1,1,1	9	No	Remove	Orchard	0
1233	Glossy privet	2,2,1	16	No	Remove	Non-native	1
1234	Coast live oak	5	16	No	Remove	Native	1
1235	Holly oak	1,1	6	No	Remove	Non-native	1
1236	Coast live oak	11	35	No	Remove	Native	3
1237	Glossy privet	3,3,2	25	No	Remove	Non-native	2
1238	Coast live oak	4,4,4	38	Yes	Remove	Native	5
1239	Coast live oak	1	3	No	Remove	Native	1
1240	Coast live oak	12	38	Yes	Remove	Native	5
1241	Coast live oak	12	38	Yes	Remove	Native	5
1242	Coast live oak	7	22	No	Remove	Native	3
1243	Pear	4,3,3	31	No	Remove	Orchard	0
1244	Pear	4,3,3	31	No	Remove	Orchard	0
1245	Coast live oak	4,4,4	38	Yes	Remove	Native	5
1246	Pear	1,1,1	9	No	Remove	Orchard	0
1247	Olive	2,2,1	16	No	Remove	Orchard	0
1248	Coast live oak	2,1,1	13	No	Remove	Native	1
1249	Elderberry	5,3,2	31	No	Remove	Native	3
1250	Tree of heaven	7,6,6	60	Yes	Remove	Non-native	4
1251	Coast live oak	5,4	28	No	Remove	Native	3
1252	Pear	3,3,3	28	No	Remove	Orchard	0
1253	Olive	4,2,1	22	No	Remove	Orchard	0
1254	Coast live oak	9,4,4	53	Yes	Remove	Native	5
1255	Almond	5,3,2	31	No	Remove	Orchard	0
1256	Almond	3,3,2	25	No	Remove	Orchard	0
1257	Holly oak	1,1,1	9	No	Remove	Non-native	1
1258	Glossy privet	5,4	28	No	Remove	Non-native	2
1259	Coast live oak	10	31	No	Remove	Native	3
1260	Olive	1,1,1	9	No	Remove	Orchard	0
1261	Pear	4,2,2	25	No	Remove	Orchard	0
1262	Coast live oak	7,6,4	53	Yes	Remove	Native	5
1263	Coast live oak	5,3	25	No	Remove	Native	3
1264	Pear	3,3,3	28	No	Remove	Orchard	0
1265	Pear	4,3,3	31	No	Remove	Orchard	0
1266	Coast live oak	1,1	6	No	Remove	Native	1
1267	Coast live oak	2,1,1	13	No	Remove	Native	1
1268	Coast live oak	20,13,12	141	Yes	Remove	Native	5
1269	Coast live oak	6	19	No	Remove	Native	3
1270	Coast live oak	3	9	No	Remove	Native	1
1271	Coast live oak	3	9	No	Remove	Native	1
1272	Raywood ash	3	9	No	Remove	Non-native	1
1273	Coast live oak	1,1	6	No	Remove	Native	1
1274	Coast live oak	2	6	No	Remove	Native	1
1275	Pear	2,1,1	13	No	Remove	Orchard	0
1276	Glossy privet	2,1	9	No	Remove	Non-native	1

1277	Coast live oak	2,1,1	13	No	Remove	Native	1
1278	Coast live oak	6	19	No	Remove	Native	3
1279	Carolina cherry laurel	1,1,1	9	No	Remove	Non-native	1
1280	Olive	4,3,2	28	No	Remove	Orchard	0
1281	Coast live oak	5,5	31	No	Remove	Native	3
1282	Olive	4,2,1	22	No	Remove	Orchard	0
1283	Olive	3,1,1	16	No	Remove	Orchard	0
1284	Canyon live oak	1,1,1	9	No	Remove	Native	1
1285	Chinese pistache	1,1,1	9	No	Remove	Non-native	1
1286	Olive	4,3,3	31	No	Remove	Orchard	0
1287	Olive	3,3,2	25	No	Remove	Orchard	0
1288	Glossy privet	4,4,3	35	No	Remove	Non-native	2
1289	Pear	8	25	No	Remove	Orchard	0
1290	Coast live oak	7	22	No	Remove	Native	3
1291	Coast live oak	9,9	57	Yes	Remove	Native	5
1292	Holly oak	1,1,1	9	No	Remove	Non-native	1
1293	Coast live oak	1,1,1	9	No	Remove	Native	1
1294	Coast live oak	8,7	47	Yes	Remove	Native	5
1295	Coast live oak	9,8,3	63	Yes	Remove	Native	5
1296	Pear	6	19	No	Remove	Orchard	0
1297	Holly oak	7,5	38	No	Remove	Non-native	4
1298	Arizona ash	1	3	No	Remove	Non-native	1
1299	Arizona ash	3	9	No	Remove	Non-native	1
1300	Coast live oak	4,3,3	31	No	Remove	Native	3
1301	Coast live oak	16	50	Yes	Remove	Native	5
1302	California bay	1,1,1	9	No	Remove	Native	1
1303	California bay	3,2,2	22	No	Remove	Native	3
1304	California black walnut	3	9	No	Remove	Orchard	0
1305	Coast live oak	13,12	79	Yes	Remove	Native	5
1306	Almond	6,5,5	50	Yes	Remove	Orchard	3
1307	Coast live oak	2,2,1	16	No	Remove	Native	1
1308	Elderberry	4,4,4	38	Yes	Remove	Native	5
1309	Elderberry	2,1,1	13	No	Remove	Native	1
1310	Coast live oak	3,3,3	28	No	Remove	Native	3
1311	Coast live oak	11,10	66	Yes	Remove	Native	5
1312	Coast live oak	12	38	Yes	Remove	Native	5
1313	Coast live oak	7,6	41	Yes	Remove	Native	5
1314	Olive	3	9	No	Remove	Orchard	0
1315	Pear	3,2,2	22	No	Remove	Orchard	0
1316	Coast live oak	6,5,4	47	Yes	Remove	Native	5
1317	Coast live oak	8	25	No	Remove	Native	3
1318	California bay	1,1,1	9	No	Remove	Native	1
1319	Coast live oak	16	50	Yes	Remove	Native	5
1320	Coast live oak	8,6,6	63	Yes	Remove	Native	5
1321	Coast live oak	7,5,4	50	Yes	Remove	Native	5
1322	Coast live oak	4	13	No	Remove	Native	1
1323	California black walnut	2	6	No	Remove	Orchard	0
1324	Coast live oak	1	3	No	Remove	Native	1
1325	Coast live oak	1,1	6	No	Remove	Native	1
1326	Coast live oak	2	6	No	Remove	Native	1
1327	Coast live oak	1	3	No	Remove	Native	1
1328	Coast live oak	1,1	6	No	Remove	Native	1
1329	Coast live oak	9,5	44	Yes	Remove	Native	5
1330	Coast live oak	12	38	Yes	Remove	Native	5
1331	California black walnut	5,3	25	No	Remove	Orchard	0
1333	Chinese pistache	1,1	6	No	Remove	Non-native	1
1340	Pear	2,1	9	No	Remove	Orchard	0
1341	Glossy privet	4,2,1	22	No	Remove	Non-native	2
1342	Glossy privet	5,2,2	28	No	Remove	Non-native	2
1343	Coast live oak	10	31	No	Remove	Native	3
1344	Coast live oak	4	13	No	Remove	Native	1
1345	Coast live oak	9,7	50	Yes	Remove	Native	5
1346	Elderberry	10,8,6	75	Yes	Remove	Native	5
1347	California black walnut	1	3	No	Remove	Orchard	0
1348	California black walnut	1	3	No	Remove	Orchard	0
1362	Coast live oak	1	3	No	Remove	Native	1
1366	Raywood ash	1,1	6	No	Remove	Non-native	1
1368	Arizona ash	3,3,2	25	No	Remove	Non-native	2
1369	Arizona ash	2	6	No	Remove	Non-native	1

Total 1205

November 14, 2022

Mr. Scott Youdall
The Hanover Company
156 Diablo Road, Suite 220
Danville, CA 94526



Subject: Mitigation for orchard trees
681 E. Trimble Road

Dear Mr. Youdall:

The Hanover Company is developing the subject property located in San Jose, CA. In October 2021, HortScience | Bartlett Consulting prepared a Preliminary Arborist Report for the project and has also provided ongoing consulting. The 2021 inventory for the Trimble Road site encompassed 584 trees, of which 326 were categorized as orchard species. Due to the high number of orchard trees with low branches on the subject site, the development team inquired about the best method to fairly appraise existing orchard trees. This letter responds to that request.

Tree Assessment Procedure

Municipal Code Chapter 13.32.020 (Tree Removal Controls) defines a tree as:

"Tree" means any live or dead woody perennial plant characterized by having a main stem or trunk which measures thirty-eight (38) inches or more in circumference at a height of fifty-four (54) inches above natural grade slope. For purposes of this Chapter, a multi-trunk tree shall be considered a single tree and measurement of that tree shall include the sum of the circumference of the trunks of that tree at a height of fifty-four inches above natural grade slope. "Tree" shall include the plural of that term.

Note: 38 inches circumference is approximately 12 inches in diameter.

Note that the size of individual stems of trees with multiple trunks are added together. As a result, a single-stem tree with a circumference of 38 inches and a tree with three stems of 13-, 13-, and 12-inches circumference are equivalent for permitting and mitigation purposes. Put another way, a tree with a diameter of 12 inches is equivalent to one with three stems of 4 inches. When inventorying trees in the field, we are required to assess any plant that is tree-like and over 6 feet in height, even if the trunk diameter has a circumference of only 3 inches (diameter = approximately 1 inch). This approach has been our standard practice in recent years within San Jose.

San Jose requires mitigation for removed trees based on the size of trees to be removed and whether they are native, non-native or orchard species. For each tree of a certain size, a number of 15 gal. trees is required as replacement. The mitigation requirements are:

Trunk Size (inches)		Category		
Diameter	Circumference	Native	Non-native	Orchard
>12	>37	5	4	3
6 to >12	19 to 37	3	2	0
<6	<19	1	1	0

Of the 326 orchard trees assessed in 2021, 157 were less than 38 inches in cumulative circumference and no mitigation is required. One hundred sixty-nine (169) orchard trees were 38 inches or greater. The required mitigation is 3 trees for every 1 tree removed, a total of 507 15 gal. trees.

An Alternative to Summing Trunk Size for Multi-stem Trees

In contrast to the City's methodology, the *Guide for Plant Appraisal* (10th edition. 2018. International Society of Arboriculture) uses trunk area for multiple stem trees rather than sum of diameter or circumference. Trunk area is used both in the reproduction and functional replacement cost methods.

A tree with a diameter of 12-inches has a circumference of 38-inches and a trunk cross-sectional area of 113 square inches. Persimmon #121, for example, had three trunks measuring 8, 2, and 2 inches, totaling 12 inches in diameter, with a summed circumference of 38 inches, which requires replacement at a 3:1 ratio. The 8-inch stem is clearly the main trunk while the two 2-inch "trunks" are low branches that attach below the measuring point of 54 inches (Photo 1). The summed cross-sectional area of the three "trunks", however, is only 57 square inches, which is equivalent to a single-stem tree with a circumference of 27-inches (8.5 inches diameter). This is approximately 50% of the cross-sectional area of a single-stem tree with a circumference of 38-inches, well below the size threshold requiring mitigation.



Photo 1. Persimmon #121. The 8 inches stem (red arrow) is clearly the main trunk while the two 2-inch stems (white arrows) are low branches.

Using sum of the cross-sectional trunk area to calculate mitigation rather the sum of stem circumference would be consistent with the 10th edition of the *Guide for Plant Appraisal*. Were trunk area employed in this manner, the number of orchard trees requiring mitigation would be reduced from 169 to 35 (Table 1, following page).

If this change in methodology were implemented, the 681 E. Trimble Road project would still be responsible for 803 mitigation trees across the site vs. the 1,205 mitigation trees calculated when sum of circumference is used for multi-stem orchard trees

In summary, the City of San Jose bases mitigation for trees with multiple stems on the sum of the circumference/diameter of individual stems. The industry standard approach would sum the cross-sectional area of individual trunks. In my view, the alternative approach not only represents the best common practice, but provides a more accurate assessment of tree size, and hence required mitigation.

Table 1. Comparison of mitigation requirement based on circumference and trunk area (orchard trees only). E. Trimble Road. San Jose CA.

CIRCUMFERENCE		TRUNK AREA	
Circumference in inches	Qualifying trees	Trunk area in square inches	Qualifying trees
37+ inches	169	113+ sq. inches	35
19<>36 inches	89	28 – 113 sq. inches	173
<19 inches	68	<28 sq. inches	118
Total	326	Total	326
	Replacement trees		Replacement trees
38+ inches	507	113+ sq. inches	105
19<>37 inches	0	28 – 113 sq. inches	0
<19 inches	0	<28 sq. inches	0
Total	507	Total	105

Please contact me with any questions. I look forward to hearing from you.

HortScience | Bartlett Consulting

Darya Barar, Managing Consulting Urban Forester and Arborist
Registered Consulting Arborist #693
ISA Certified Arborist No. WE-6757A
ISA Tree Risk Assessment Qualified and Tree Appraisal Qualified