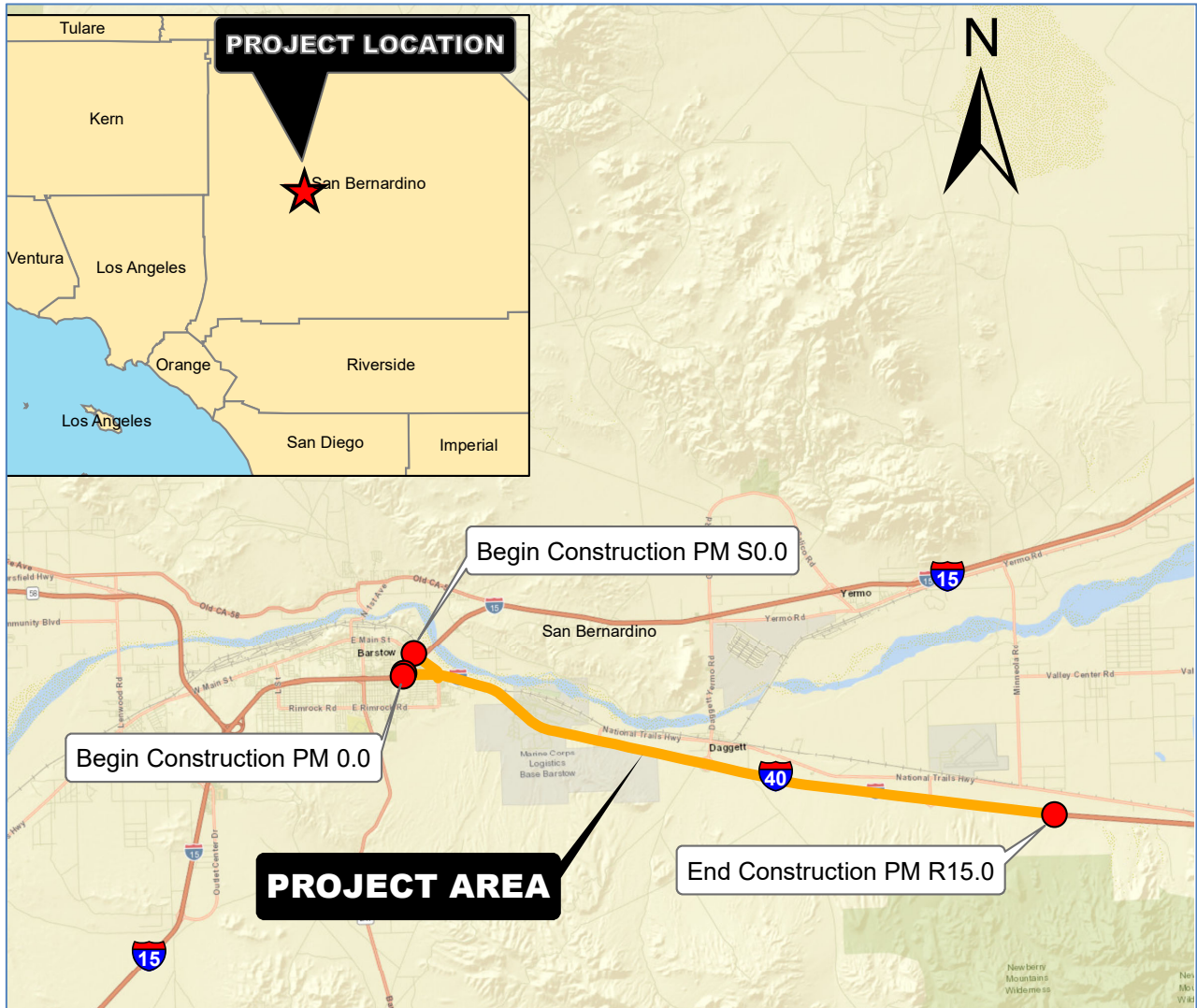




PUBLIC NOTICE

Notice of Intent to Adopt a Mitigated Negative Declaration

Minor Pavement Rehabilitation (CAPM) On 1-40 Between Interstate 15/Interstate 40 Separation and 0.4 Miles East of Lava Wash Bridge



<p>WHAT'S BEING PLANNED</p>	<p>The California Department of Transportation (Caltrans) is proposing to rehabilitate the existing roadway under a Minor Pavement Rehabilitation Capital Preventive Maintenance (CAPM) project to extend pavement service life with minimal maintenance expenditures 5 – 10 years, and improve ride quality along Interstate Route 40 (I-40) from the Interstate Route 15 (I-15)/I-40 Separation to 0.4 miles east of Lava Wash Bridge (PM 0.0/R15.0) and the spur along Main Street (PM S0.0/S0.8), in and near Barstow and Daggett, in San Bernardino County. The scope of work consists of milling and overlaying the existing pavement, digging out localized failures, rehabilitating sign panels and lighting, replacing rock slope protection, upgrading curb ramps in compliance with the Americans with Disabilities Act (ADA), and upgrading highway appurtenances to improve roadside safety. The project is located in the County of San Bernardino and in the city of Barstow.</p>
<p>WHY THIS AD?</p>	<p>Caltrans has studied the effects this project may have on the environment. Our studies show it will not significantly affect the quality of the environment. The report that explains why is called an <i>Initial Study (with Proposed Mitigated Negative Declaration)</i>. This notice is to tell you of the preparation of the <i>Initial Study (with Proposed Mitigated Negative Declaration)</i> and of its availability for you to read, and to also offer the opportunity to request a public hearing or to provide comments, and the intent to adopt this Mitigated Negative Declaration.</p>
<p>WHAT'S AVAILABLE?</p>	<p>Copies of the <i>Initial Study (with Proposed Mitigated Negative Declaration)</i>, including associated maps, and other project information are available by request via email (gabrielle.duff@dot.ca.gov) or via phone (909)501-5142.</p>
<p>WHERE YOU COME IN</p>	<p>Do you have any comments about processing the project with an <i>Initial Study with Proposed Mitigated Negative Declaration</i>? Do you disagree with the findings of our study as set forth in the <i>Initial Study with Proposed Mitigated Negative Declaration</i>? Would you care to make any other comments on the project? We'd like to hear what you think. Please submit your comments via email or in writing, no later than April 1st, 2022 to:</p> <p>California Department of Transportation ATTN: Gabrielle Duff, Senior Environmental Planner 464 W. 4th Street, MS 827 San Bernardino, CA 92401-1400; or via email to gabrielle.duff@dot.ca.gov Please use "Minor Pavement Rehabilitation on I-40" in the subject line of the email.</p> <p>The date we will begin accepting comments is March 1st, 2022. If there are no major comments, Caltrans will proceed with the project's design.</p>
<p>CONTACT</p>	<p>For more information about this project please contact the Caltrans District 8 Office of Public Affairs at (909) 383-4631. For individuals with sensory disabilities, this document can be made available in Braille, in large print, on audiocassette, or on computer disk. To obtain a copy in one of these alternate formats, call or write to Gabrielle Duff, Senior Environmental Planner, 464 W. 4th Street, MS 827, San Bernardino, California 92401-1400; or use the California Relay Service 1-800-735-2929 (TTY to Voice), 1-800-735-2922 (Voice to TTY), 1-800-854-7784 (From or to Speech to Speech), or dial 711.</p> <p>EA 08-1J720 (PN 0818000099)</p>