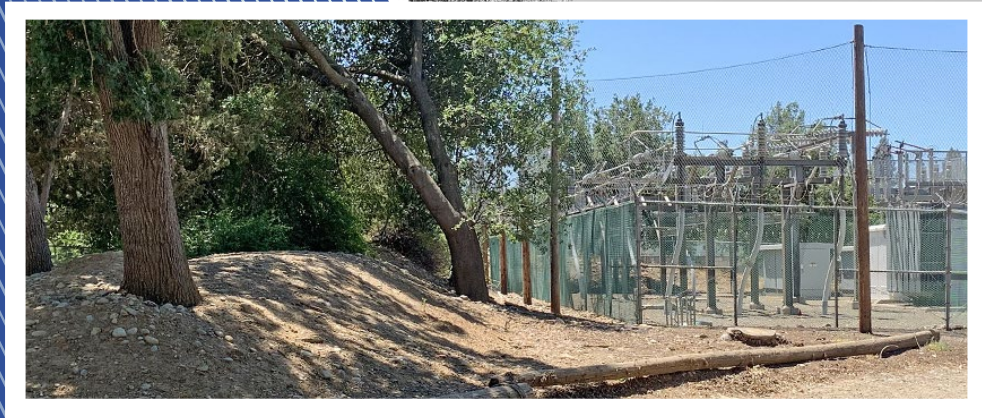


Appendix E

Arborist Report

Arborist Report for the
**SMUD Cordova Park Underground
Cable Replacement Project**



Prepared for:



April 2022

Arborist Report for the

SMUD Cordova Park Underground Cable Replacement Project



Prepared for:

SMUD
6201 S Street, Mail Stop B209
Sacramento, CA 95817

Contact:

Rob Ferrera
Environmental Management Specialist
916.769.8241
Rob.Ferrera@smud.org

Prepared by:

Ascent Environmental, Inc.
455 Capitol Mall, Suite 300
Sacramento, CA 95814

Contact:

Joshua Boldt
ISA Certified Arborist (ISA# WE-7069A)
916.444.7301

TABLE OF CONTENTS

Section	Page
1 INTRODUCTION.....	1
1.1 Project Description.....	1
2 REGULATORY SETTING.....	4
2.1 City of Rancho Cordova Municipal Code.....	4
3 SURVEY METHODS.....	4
4 RESULTS.....	5
4.1 Protection measures.....	15

Attachments

A Tree Data

Figures

Figure 1	Regional Location.....	2
Figure 2	Project Alignment.....	3
Figure 3a	Tree Location (1 of 9).....	6
Figure 3b	Tree Location (2 of 9).....	7
Figure 3c	Tree Location (3 of 9).....	8
Figure 3d	Tree Location (4 of 9).....	9
Figure 3e	Tree Location (5 of 9).....	10
Figure 3f	Tree Location (6 of 9).....	11
Figure 3g	Tree Location (7 of 9).....	12
Figure 3h	Tree Location (8 of 9).....	13
Figure 3i	Tree Location (9 of 9).....	14

Tables

Table 1	Summary of Trees in the Survey Area.....	5
---------	------------------------------------------	---

LIST OF ABBREVIATIONS

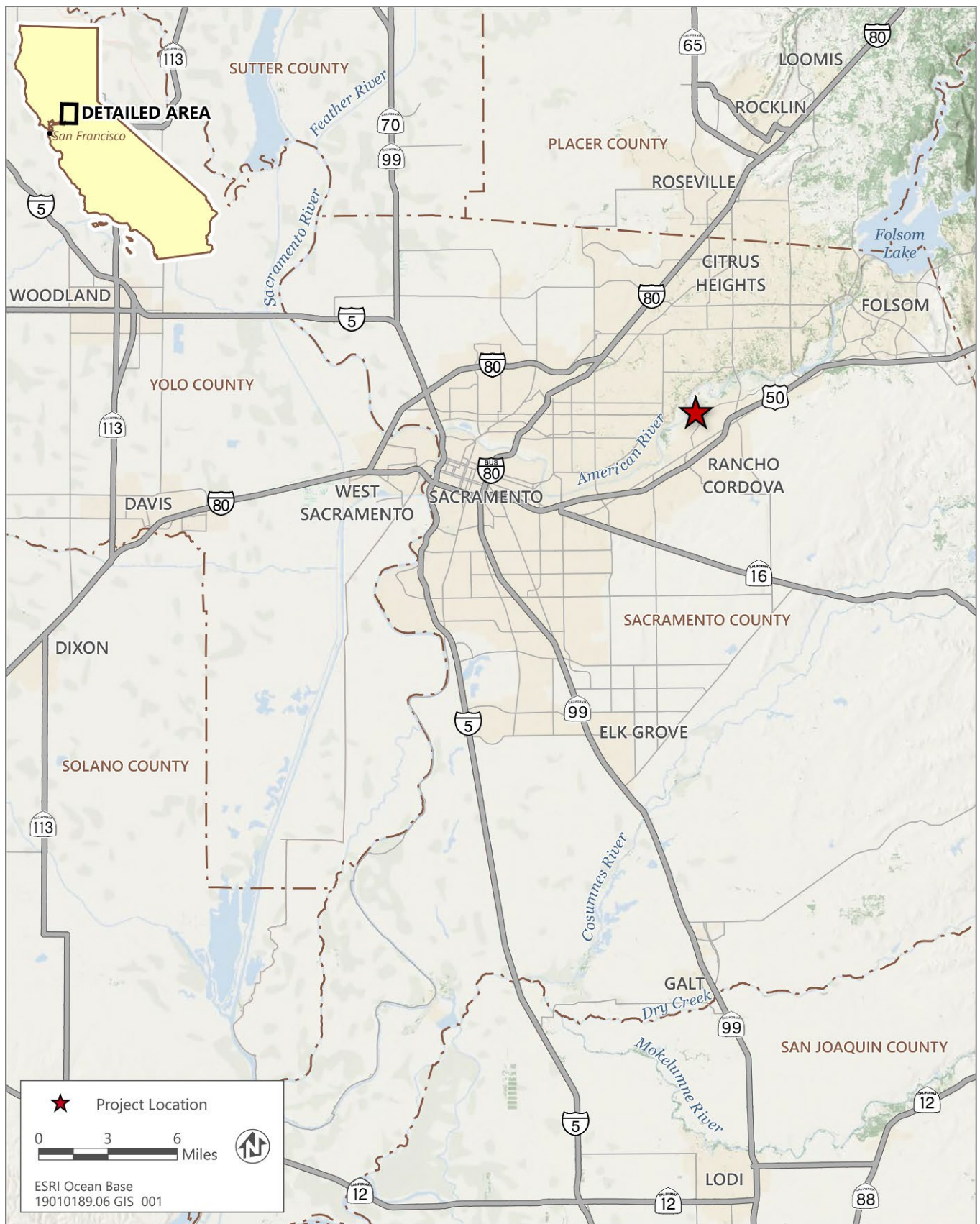
project	Cordova Park Underground Cable Replacement Project
SMUD	Sacramento Municipal Utility District
TPZ	Tree Protection Zone

1 INTRODUCTION

This report was prepared to document the results of an arborist survey conducted for the proposed Sacramento Municipal Utility District (SMUD) Cordova Park Underground Cable Replacement Project (project). Ascent Environmental was contracted by SMUD to perform a tree survey and prepare an arborist report for the survey area.

1.1 PROJECT DESCRIPTION

SMUD replaces aging electrical infrastructure as part of its routine maintenance and upgrade protocols. Accordingly, SMUD proposes to install approximately 0.6 miles of 12 kilovolt (kV) underground cable, approximately 2.12 miles of 69kV underground cable and up to 13 new utility vaults in the City of Rancho Cordova, near the location of existing 12kV and 69kV underground cables that are approaching the end of their operational lives (see Figure 1). The proposed 69kV alignment begins on the northwest side of Coloma Road, approximately 200 feet southeast of Sierra Madre Court. The 69kV alignment heads northwest from Coloma Road, crossing through the property of Mills Middle School and Cordova High School, until it connects to SMUD's Cordova Park Substation located near the intersection of Ambassador Drive and Trails Court. From the substation, the 69kV alignment heads northeast along the backs of homes facing Ambassador Drive until it reaches Rossmoor Drive. At Rossmoor Drive, the alignment turns and heads north towards the American River. The 69kV alignment stays along Rossmoor Drive until its termination near the American River, when the alignment connects to existing riser poles located between the terminus of Rossmoor Drive and the American River. The existing 12kV and 69kV lines that run through the American River Parkway would be abandoned in place, and new conduit containing the new lines would be installed in separate trenches within the alignments described above. The proposed 12kV and 69kV alignments are highly disturbed due to vehicle traffic, including areas of pavement and dirt. There are residences adjacent to portions of the proposed 12kV and 69kV alignments. Along Ambassador Drive, the 12kV circuit would be installed beneath existing roadways, sidewalks, or curbs and gutters. Along Rossmoor Drive, the 69kV circuit would be installed beneath existing pavement or within an existing fuel break adjacent to the pavement. Installation of the new conduit and manholes would be done via open trenching. Figure 2 shows the project alignments.



Source: adapted by Ascent Environmental in 2022

Figure 1 Regional Location



Source: adapted by Ascent Environmental in 2022

Figure 2 Project Alignment

2 REGULATORY SETTING

2.1 CITY OF RANCHO CORDOVA MUNICIPAL CODE

2.1.1 Chapter 19.04

Chapter 19.04 of the City of Rancho Cordova Municipal Code (Protection of Public Trees) establishes regulations pertaining to the planting, maintenance, protection, and preservation of all public trees growing on public property. A public tree is defined as a tree or shrub whose trunk is planted in a street, planting easement, public premises, public sidewalk, median, traffic island, or any other right-of-way owned or controlled by the city through an easement, license, fee title, or other permissive grant of use and maintained by the city. A public tree permit shall be required before any person shall plant, transplant, move, separate, trim, prune, cut above or below the ground, disrupt, alter, or do surgery upon any public tree.

2.1.2 Chapter 19.12

Chapter 19.12 of the City of Rancho Cordova Municipal Code (Preservation and Protection of Private Trees) establishes regulations for the protection, removal, and preservation of landmark trees and protected trees within the city. A landmark tree is defined as any trees designated by council through resolution as a vital and historical part of the city's landscape such that the trees need to be designated as landmarks for protection and preservation.

Protected trees are defined as:

1. Native oak – *Quercus lobata*, valley oak; *Quercus wislizenii*, interior live oak; *Quercus douglasii*, blue oak; or *Quercus morehus*, oracle oak – having a trunk diameter of at least six inches or greater; or
2. Any tree species other than a native oak having a trunk diameter of at least 12 inches or greater on nonresidential property; or
3. Any tree species other than a native oak having a trunk diameter of at least 24 inches or greater on residential property; or
4. Any tree planted as a requirement tree for site development, tree permit condition, landscape plan removal replacement, or other designated condition by the public works director or planning director.
5. "Protected tree" does not include any trees for sale within the city sold by a nursery.

Section 19.12.040 states that "no person shall trench, grade or fill within the dripline of any protected tree, or damage, kill or remove any protected tree, or perform a major trimming of any protected tree without an approved tree permit. It shall be the responsibility of the owner or lessee/tenant of the property on which the protected tree is located and the person performing tree work to have the approved tree permit and/or a copy of the conditions of permit approval at the work site."

3 SURVEY METHODS

The tree survey was conducted by International Society of Arboriculture Certified Arborist Joshua Boldt (Certification # WE-7069A) on January 26, February 2, and February 3, 2022. Trees were surveyed according to standard professional practices. Survey methods consisted of identifying, measuring, assessing, and tagging all accessible trees within the survey area. Trees were tagged with aluminum tags with identification numbers where possible. Trees five inches or less in diameter, tree in poor health, and trees that are located on private properties or were otherwise inaccessible were not tagged. All tree location data was collected with a Global Positioning System. Information collected included the species of the tree, diameter at standard height (measured at 4.5 feet from the base of the tree), the general

condition of the tree and its components (root collar, trunk, limbs, and foliage), the general structural health of the tree, and its overall vigor ("Condition"). The "Condition" of the tree is defined as follows:

Excellent: Tree is without any visible deficiencies. Tree is in excellent health and is structurally sound, with little evidence of dieback and good overall annual growth. The tree shows no sign of disease, decay, or mistletoe infestation. The tree has a balanced branching structure.

Good: Tree has no major deficiencies but may have minor defects such as minor dieback or overcrowding. Tree is in good health and is structurally sound. Minor defects are not detrimental to overall health of tree.

Fair: Tree has no major deficiencies but many minor defects. Tree is in average health and may have some structural deficiencies such as decay and numerous dead limbs. Overall health and integrity of the tree is not adversely affected at present, but the tree may have limited growth, and unbalanced or asymmetrical form. Deficiencies may be detrimental to long-term health of tree.

Poor: Tree has major deficiencies that are detrimental to health of tree, including major decay in the trunk or main limbs, extensive dieback, sparse foliage, extreme overcrowding, and unbalanced or asymmetrical form.

Trees may be ascribed a condition that falls between the described major categories (i.e. "Good to Fair"). These trees have elements of both categories.

4 RESULTS

The results of the data collected during the tree survey are presented in Figures 3a through 3i, Table 1, and Attachment A. Information provided in Table 1 includes a summary of the native and non-native tree species observed in the survey area. Figures 3a through 3i present all the trees identified and mapped during the field survey.

Table 1 Summary of Trees in the Survey Area

Tree Species	Number of Trees
Native Trees	
<i>Quercus lobata</i> valley oak	214
<i>Quercus wislizeni</i> interior live oak	98
<i>Quercus agrifolia</i> coast live oak	20
<i>Fraxinus latifolia</i> Oregon ash	16
<i>Populus fremontii</i> ssp. <i>fremontii</i> Fremont cottonwood	6
Non-Native Trees	
<i>Prunus</i> sp.	23
<i>Juniperus</i> sp. Juniper	2
<i>Ligustrum lucidum</i> glossy privet	1
<i>Robinia pseudoacacia</i> black locust	1
Unknown ornamental ¹	13

¹ Due to the timing of the tree survey (January and February), deciduous ornamental trees were not bearing leaves which made identification of some tree species difficult.



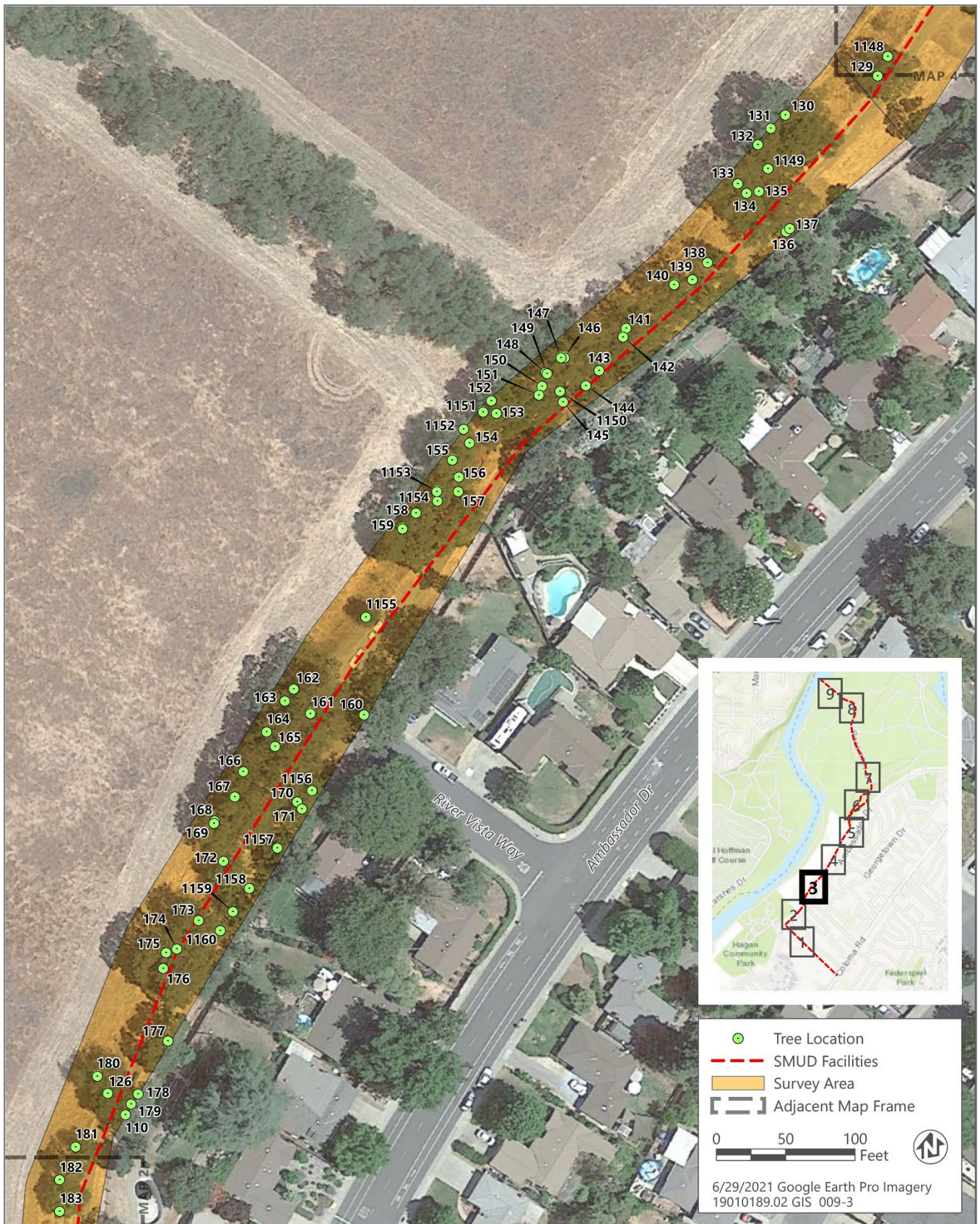
Source: Data received from SMUD in 2021

Figure 3a Tree Location (1 of 9)



Source: Data received from SMUD in 2021

Figure 3b Tree Location (2 of 9)



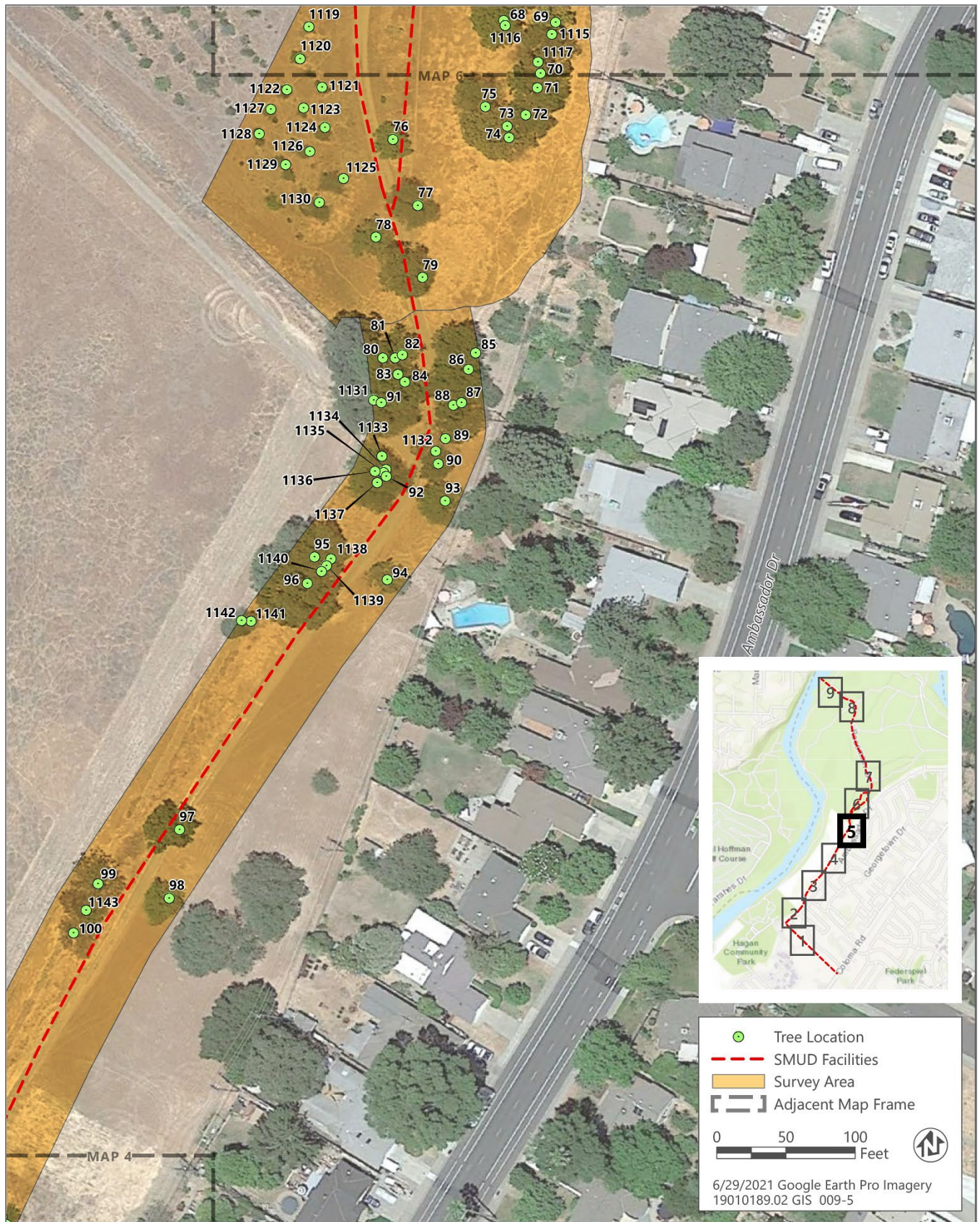
Source: Data received from SMUD in 2021

Figure 3c Tree Location (3 of 9)



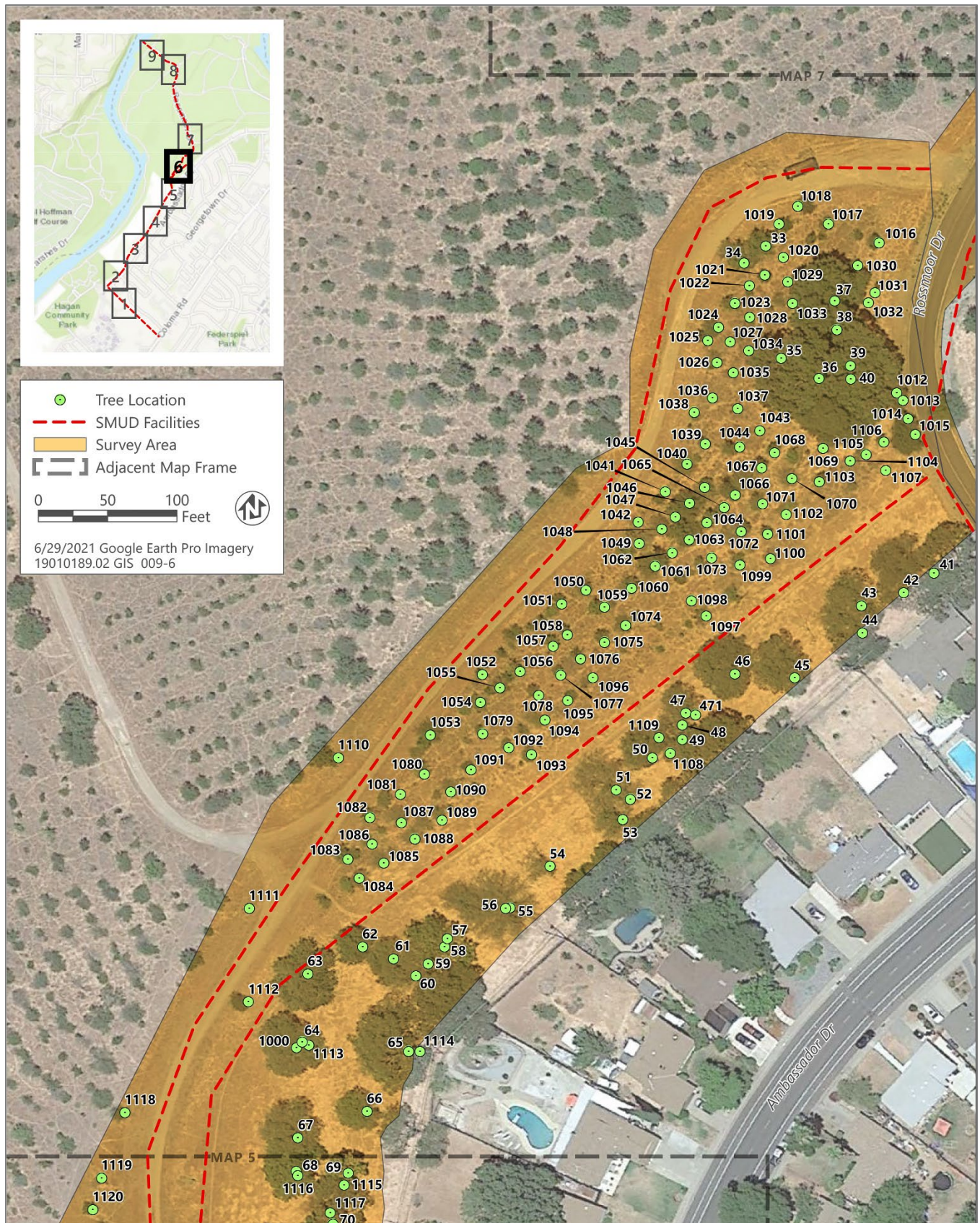
Source: Data received from SMUD in 2021

Figure 3d Tree Location (4 of 9)



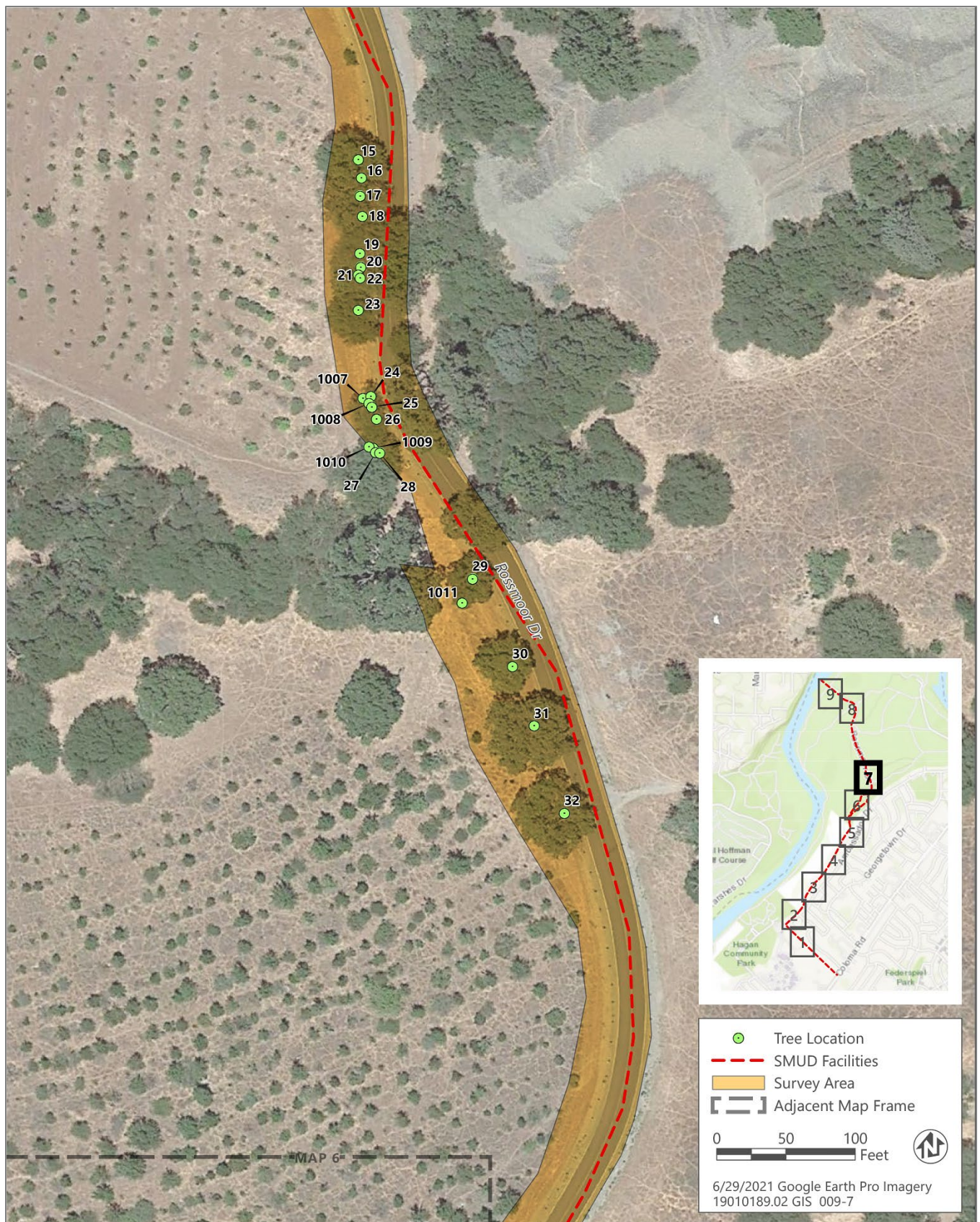
Source: Data received from SMUD in 2021

Figure 3e Tree Location (5 of 9)



Source: Data received from SMUD in 2021

Figure 3f Tree Location (6 of 9)



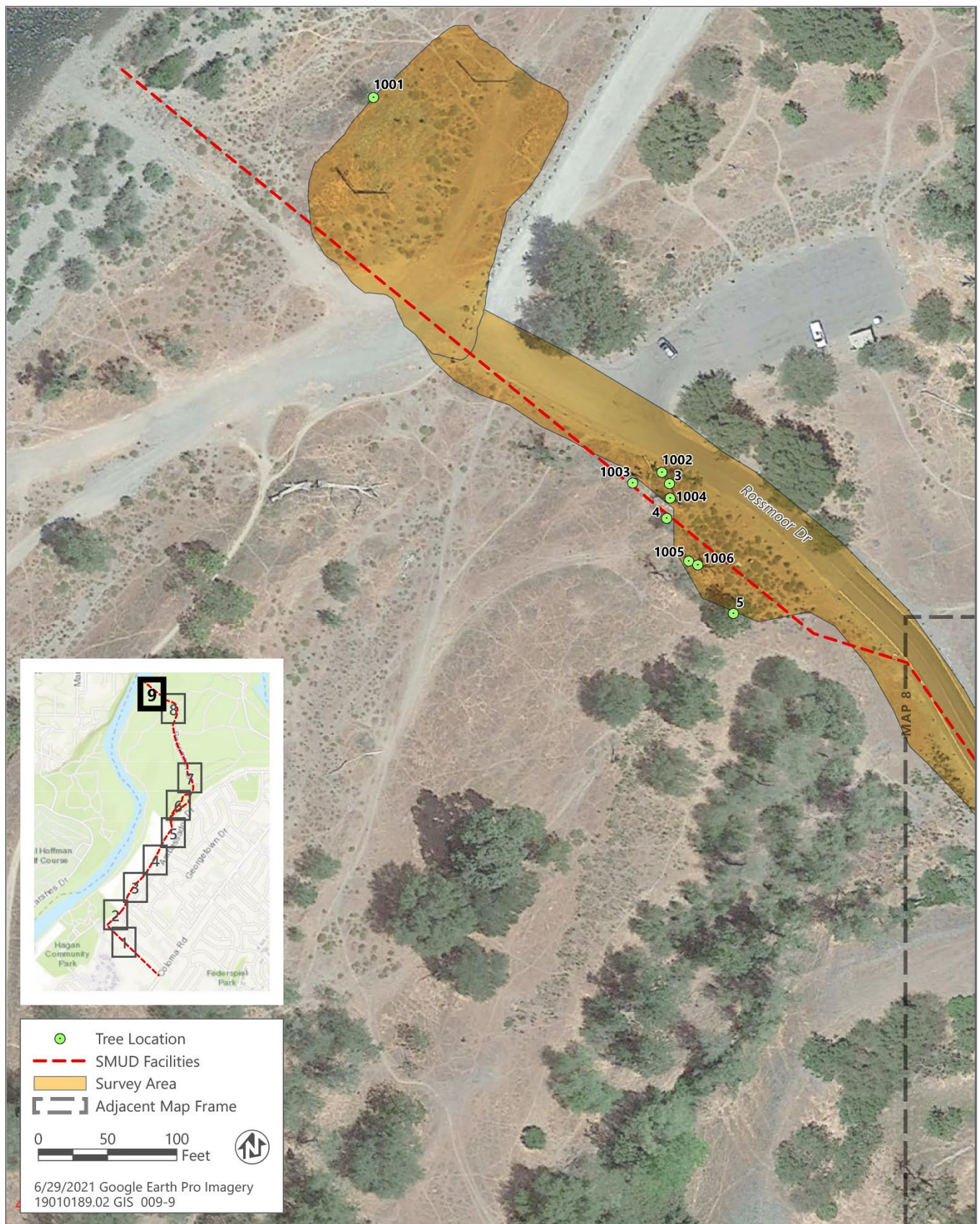
Source: Data received from SMUD in 2021

Figure 3g Tree Location (7 of 9)



Source: Data received from SMUD in 2021

Figure 3h Tree Location (8 of 9)



Source: Data received from SMUD in 2021

Figure 3i Tree Location (9 of 9)

4.1 PROTECTION MEASURES

4.1.1 Tree Preservation Guidelines

For those trees that will be preserved on site during project construction, the following guidelines are recommended to ensure the long-term survival and stability of the trees.

- ▶ **Educate Workers:** Educate all workers on site about tree protection guidelines and requirements prior to construction.
- ▶ **Establish a Tree Protection Zone:** Establish a tree protection zone (TPZ) around any tree or group of trees designated for retention. The TPZ should at minimum be equal to 1.5 times the radius of the dripline. The TPZ may be adjusted on a case-by-case basis after consultation with a Certified Arborist.
- ▶ **Install Fencing and Signage:** Install fencing around the TPZ of all trees or groups of trees designated for retention. The fencing should remain in place for the duration of construction activities. Post appropriate signage to help convey the importance of the TPZ to workers.
- ▶ **Prohibit Construction Activities within the TPZ:** Prohibit construction-related activities, including grading, trenching, construction, demolition, or other work, within the TPZ. No heavy equipment or machinery should be operated within the TPZ. No construction materials, equipment, machinery, or other supplies should be stored within the TPZ. Vehicle and foot traffic should not be permitted within the TPZ. No wires or signs should be attached to any trees designated for retention.
- ▶ **Prune Selected Trees:** Prune selected trees to provide necessary clearance during construction and to remove any defective limbs or other tree parts that may pose a failure risk. All pruning should be completed by a Certified Arborist or Tree Worker and adhere to the Tree Pruning Guidelines of the International Society of Arboriculture.
- ▶ **Monitor Trees and TPZs:** Monitor the integrity of the TPZs and the health of the trees designated for retention regularly throughout the construction process. A Certified Arborist should monitor the health and condition of the protected trees and, if necessary, recommend additional mitigations and appropriate actions. This could include the monitoring of trees adjacent to project facilities to determine if construction activities (including the removal of nearby trees) would affect protected trees in the future.
- ▶ **Treat Impacted Trees:** Provide supplemental irrigation and other care, such as mulch and fertilizer, as deemed necessary by a Certified Arborist, to any trees impacted by construction. Treatment of any injuries should be performed by a Certified Arborist.

This page intentionally left blank.

Attachment A

Tree Data

Table A **Arborist Survey Data**

Tree ID ¹	Species	DSH ² (inches)	Total DSH	Condition ³	Protected Tree ⁴
3	<i>Populus fremontii</i> ssp. <i>fremontii</i> Fremont cottonwood	14	14	Poor	Yes
4	<i>Populus fremontii</i> ssp. <i>fremontii</i> Fremont cottonwood	8	8	Poor	No
5	<i>Fraxinus latifolia</i> Oregon ash	4,5,5,6,8,11	39	Fair	Yes
6	<i>Fraxinus latifolia</i> Oregon ash	6,7,7,12	32	Good/Fair	Yes
7	<i>Quercus wislizeni</i> interior live oak	7,7	14	Good	Yes
8	<i>Quercus wislizeni</i> interior live oak	6,6,9	21	Fair	Yes
9	<i>Fraxinus latifolia</i> Oregon ash	6,8	14	Poor	Yes
10	<i>Fraxinus latifolia</i> Oregon ash	7,8	15	Fair	Yes
11	<i>Quercus wislizeni</i> interior live oak	6	6	Good/Fair	Yes
12	<i>Quercus lobata</i> valley oak	38	38	Good	Yes
13	<i>Quercus wislizeni</i> interior live oak	12,13,14,14	53	Good	Yes
14	<i>Quercus lobata</i> valley oak	50	50	Good	Yes
15	<i>Quercus wislizeni</i> interior live oak	16	16	Good	Yes
16	<i>Quercus lobata</i> valley oak	17	17	Good	Yes
17	<i>Quercus lobata</i> valley oak	17	17	Good	Yes
18	<i>Quercus lobata</i> valley oak	7,12,14	33	Good/Fair	Yes
19	<i>Quercus wislizeni</i> interior live oak	3,7,8	18	Fair	Yes
20	<i>Quercus wislizeni</i> interior live oak	10	10	Good/Fair	Yes
21	<i>Quercus wislizeni</i> interior live oak	8,9	17	Fair	Yes
22	<i>Quercus lobata</i> valley oak	13	13	Good	Yes
23	<i>Quercus wislizeni</i> interior live oak	20	20	Good	Yes
24	<i>Quercus lobata</i> valley oak	6	6	Fair	Yes
25	<i>Quercus wislizeni</i> interior live oak	12	12	Good	Yes

Tree ID ¹	Species	DSH ² (inches)	Total DSH	Condition ³	Protected Tree ⁴
26	<i>Quercus wislizeni</i> interior live oak	11	11	Good	Yes
27	<i>Quercus lobata</i> valley oak	8	8	Fair	Yes
28	<i>Quercus wislizeni</i> interior live oak	10	10	Good/Fair	Yes
29	<i>Quercus lobata</i> valley oak	8,15	23	Good/Fair	Yes
30	<i>Quercus lobata</i> valley oak	19	19	Good/Fair	Yes
31	<i>Quercus lobata</i> valley oak	26	26	Good	Yes
32	<i>Quercus lobata</i> valley oak	24	24	Good	Yes
33	<i>Quercus lobata</i> valley oak	7	7	Good/Fair	Yes
34	<i>Quercus lobata</i> valley oak	4,5,5,7	21	Fair	Yes
35	<i>Quercus lobata</i> valley oak	12	12	Fair	Yes
36	<i>Quercus lobata</i> valley oak	28	28	Good	Yes
37	<i>Quercus lobata</i> valley oak	17	17	Good/Fair	Yes
38	<i>Quercus lobata</i> valley oak	16	16	Good/Fair	Yes
39	<i>Quercus lobata</i> valley oak	40	40	Good/Fair	Yes
40	<i>Quercus lobata</i> valley oak	14,17,17	48	Fair	Yes
41	<i>Quercus lobata</i> valley oak	21	21	Good	Yes
42	<i>Quercus lobata</i> valley oak	7	7	Fair	Yes
43	<i>Quercus lobata</i> valley oak	20	20	Good	Yes
44	<i>Quercus lobata</i> valley oak	14	14	Good	Yes
45	<i>Quercus lobata</i> valley oak	20	20	Good	Yes
46	<i>Quercus lobata</i> valley oak	27	27	Good/Fair	Yes
47	<i>Quercus lobata</i> valley oak	7,11	18	Good/Fair	Yes
48	<i>Quercus lobata</i> valley oak	12	12	Fair	Yes
49	<i>Quercus lobata</i> valley oak	13	13	Good/Fair	Yes
50	<i>Quercus lobata</i> valley oak	15	15	Fair	Yes

Tree ID ¹	Species	DSH ² (inches)	Total DSH	Condition ³	Protected Tree ⁴
51	<i>Quercus lobata</i> valley oak	25	25	Fair/Poor	Yes
52	<i>Quercus lobata</i> valley oak	14	14	Good/Fair	Yes
53	<i>Quercus lobata</i> valley oak	5,7,10,10	32	Fair	Yes
54	<i>Quercus lobata</i> valley oak	9	9	Fair	Yes
55	<i>Quercus lobata</i> valley oak	23	23	Good	Yes
56	<i>Quercus wislizeni</i> interior live oak	15	15	Fair	Yes
57	<i>Fraxinus latifolia</i> Oregon ash	12	12	Good/Fair	Yes
58	<i>Fraxinus latifolia</i> Oregon ash	13	13	Fair	Yes
59	<i>Quercus lobata</i> valley oak	9	9	Fair	Yes
60	<i>Quercus lobata</i> valley oak	13,14	27	Good/Fair	Yes
61	<i>Quercus lobata</i> valley oak	4,6,7,8,14	39	Fair	Yes
62	<i>Quercus lobata</i> valley oak	14	14	Good	Yes
63	<i>Quercus lobata</i> valley oak	23	23	Good	Yes
64	<i>Quercus lobata</i> valley oak	22	22	Good	Yes
65	<i>Quercus lobata</i> valley oak	40	40	Good/Fair	Yes
66	<i>Quercus lobata</i> valley oak	9,9	18	Fair	Yes
67	<i>Quercus lobata</i> valley oak	22	22	Good	Yes
68	<i>Fraxinus latifolia</i> Oregon ash	6,9,12,14,15	56	Good/Fair	Yes
69	<i>Fraxinus latifolia</i> Oregon ash	11	11	Fair	No
70	<i>Robinia pseudoacacia</i> black locust	9,11	20	Fair/Poor	Yes
71	<i>Fraxinus latifolia</i> Oregon ash	10,13	23	Fair	Yes
72	<i>Fraxinus latifolia</i> Oregon ash	4,5,5,5,6,7	32	Fair	Yes
73	<i>Fraxinus latifolia</i> Oregon ash	5,6,7,7,7,8,8,8,9,9,10,10,11	105	Fair	Yes
74	<i>Quercus lobata</i> valley oak	8	8	Fair	Yes
75	<i>Quercus lobata</i> valley oak	13,7,8	28	Fair	Yes

Tree ID ¹	Species	DSH ² (inches)	Total DSH	Condition ³	Protected Tree ⁴
76	<i>Prunus</i> sp.	7,9,9,10	35	Fair/Poor	Yes
77	<i>Quercus lobata</i> valley oak	18	18	Good	Yes
78	<i>Prunus</i> sp.	6,7,7,7,7,10,11	62	Poor	Yes
79	<i>Quercus lobata</i> valley oak	19	19	Good/Fair	Yes
80	<i>Quercus lobata</i> valley oak	34	34	Good/Fair	Yes
81	<i>Quercus lobata</i> valley oak	13	13	Good/Fair	Yes
82	<i>Quercus lobata</i> valley oak	11	11	Fair	Yes
83	<i>Quercus lobata</i> valley oak	6,8	14	Fair	Yes
84	<i>Quercus lobata</i> valley oak	14	14	Good/Fair	Yes
85	<i>Quercus lobata</i> valley oak	13	13	Good/Fair	Yes
86	<i>Quercus lobata</i> valley oak	4,5,8,8	25	Fair/Poor	Yes
87	<i>Quercus wislizeni</i> interior live oak	8,13,14	35	Good/Fair	Yes
88	<i>Fraxinus latifolia</i> Oregon ash	8,9	17	Fair	Yes
89	<i>Quercus lobata</i> valley oak	10,12	22	Fair	Yes
90	<i>Prunus</i> sp.	5,8	13	Fair	Yes
91	<i>Quercus wislizeni</i> interior live oak	27	27	Good	Yes
92	<i>Quercus wislizeni</i> interior live oak	5,7,9,9,10	40	Good/Fair	Yes
93	<i>Prunus</i> sp.	4,5,5,6,6,7,8,8	49	Fair	Yes
94	<i>Prunus</i> sp.	4,8,8,8	28	Poor	Yes
95	<i>Quercus lobata</i> valley oak	11,12,12,14	49	Good/Fair	Yes
96	<i>Quercus lobata</i> valley oak	10,15,17	42	Good/Fair	Yes
97	<i>Fraxinus latifolia</i> Oregon ash	9,11,12	32	Good	Yes
98	<i>Prunus</i> sp.	4,5,8,10,11	38	Fair/Poor	Yes
99	<i>Fraxinus latifolia</i> Oregon ash	22	22	Poor	Yes
100	<i>Fraxinus latifolia</i> Oregon ash	10,11	21	Good/Fair	Yes
101	<i>Quercus lobata</i> valley oak	23	23	Fair	Yes
102	<i>Quercus wislizeni</i> interior live oak	15	15	Good	Yes
103	<i>Quercus lobata</i>	14	14	Fair	Yes

Tree ID ¹	Species	DSH ² (inches)	Total DSH	Condition ³	Protected Tree ⁴
	valley oak				
104	<i>Quercus lobata</i> valley oak	6,7,11	24	Fair	Yes
105	<i>Quercus wislizeni</i> interior live oak	17	17	Good/Fair	Yes
106	<i>Quercus wislizeni</i> interior live oak	7	7	Good/Fair	Yes
107	<i>Quercus lobata</i> valley oak	4,8	12	Good/Fair	Yes
108	<i>Prunus</i> sp.	7,9	16	Fair	Yes
109	<i>Quercus lobata</i> valley oak	10,13,24	47	Good/Fair	Yes
110	<i>Quercus wislizeni</i> interior live oak	12,14	26	Fair	Yes
111	<i>Quercus lobata</i> valley oak	26	26	Fair/Poor	Yes
112	<i>Quercus wislizeni</i> interior live oak	13,14	27	Fair	Yes
113	<i>Quercus wislizeni</i> interior live oak	4,6	10	Fair	Yes
114	<i>Quercus lobata</i> valley oak	5,7	12	Fair	Yes
115	<i>Quercus lobata</i> valley oak	25	25	Good	Yes
116	<i>Quercus lobata</i> valley oak	15	15	Good	Yes
117	<i>Quercus lobata</i> valley oak	16,20	36	Good/Fair	Yes
118	<i>Quercus lobata</i> valley oak	19,21	40	Good/Fair	Yes
119	<i>Quercus lobata</i> valley oak	18	18	Good	Yes
120	<i>Quercus lobata</i> valley oak	21	21	Good	Yes
121	<i>Quercus lobata</i> valley oak	21	21	Good/Fair	Yes
122	<i>Quercus lobata</i> valley oak	25	25	Good	Yes
123	<i>Quercus wislizeni</i> interior live oak	26	26	Good	Yes
124	<i>Quercus lobata</i> valley oak	28	28	Good/Fair	Yes
125	<i>Quercus wislizeni</i> interior live oak	17,21	38	Good/Fair	Yes
126	<i>Quercus wislizeni</i> interior live oak	8,14	22	Fair	Yes
127	<i>Prunus</i> sp.	6,6,8,8	28	Fair/Poor	Yes
128	<i>Quercus lobata</i> valley oak	15,22	37	Fair/Poor	Yes

Tree ID ¹	Species	DSH ² (inches)	Total DSH	Condition ³	Protected Tree ⁴
129	<i>Quercus lobata</i> valley oak	7,20	27	Good/Fair	Yes
130	<i>Quercus wislizeni</i> interior live oak	12,16	28	Fair	Yes
131	<i>Quercus lobata</i> valley oak	8,22,23	53	Good/Fair	Yes
132	<i>Quercus wislizeni</i> interior live oak	12	12	Fair	Yes
133	<i>Quercus lobata</i> valley oak	9,10,17	36	Fair	Yes
134	<i>Quercus lobata</i> valley oak	9,11,13	33	Fair	Yes
135	<i>Quercus lobata</i> valley oak	18	18	Good/Fair	Yes
136	Unknown ornamental ⁵	7	7	Good	No
137	<i>Quercus lobata</i> valley oak	10,11	21	Fair	Yes
138	<i>Quercus lobata</i> valley oak	9	9	Fair	Yes
139	<i>Quercus lobata</i> valley oak	6,8,9,10	33	Good/Fair	Yes
140	<i>Quercus lobata</i> valley oak	7,10,10,13	40	Good/Fair	Yes
141	<i>Quercus lobata</i> valley oak	20,21	41	Good	Yes
142	<i>Quercus wislizeni</i> interior live oak	11,14	25	Fair	Yes
143	<i>Quercus lobata</i> valley oak	10,13	23	Fair	Yes
144	<i>Quercus lobata</i> valley oak	3,5,7,8	23	Fair	Yes
145	<i>Quercus lobata</i> valley oak	12,15	27	Good/Fair	Yes
146	<i>Quercus lobata</i> valley oak	24	24	Good	Yes
147	<i>Quercus lobata</i> valley oak	14	14	Good/Fair	Yes
148	<i>Quercus lobata</i> valley oak	28	28	Good/Fair	Yes
149	<i>Quercus lobata</i> valley oak	12	12	Fair	Yes
150	<i>Quercus lobata</i> valley oak	13,16	29	Fair	Yes
151	<i>Quercus lobata</i> valley oak	13,21	34	Fair	Yes
152	<i>Quercus lobata</i> valley oak	16	16	Good/Fair	Yes
153	<i>Quercus lobata</i> valley oak	8	8	Fair	Yes

Tree ID ¹	Species	DSH ² (inches)	Total DSH	Condition ³	Protected Tree ⁴
154	<i>Quercus lobata</i> valley oak	7	7	Good	Yes
155	<i>Quercus wislizeni</i> interior live oak	19	19	Good/Fair	Yes
156	<i>Quercus agrifolia</i> coast live oak	13	13	Good	Yes
157	<i>Quercus wislizeni</i> interior live oak	11,13	24	Fair	Yes
158	<i>Quercus lobata</i> valley oak	17,22,29	68	Good/Fair	Yes
159	<i>Quercus wislizeni</i> interior live oak	16	16	Good/Fair	Yes
160	<i>Quercus lobata</i> valley oak	17	17	Good	Yes
161	<i>Quercus lobata</i> valley oak	18	18	Good	Yes
162	<i>Quercus lobata</i> valley oak	15,31	46	Good/Fair	Yes
163	<i>Quercus lobata</i> valley oak	12,15,17	44	Fair	Yes
164	<i>Quercus lobata</i> valley oak	16	16	Good	Yes
165	<i>Quercus lobata</i> valley oak	7,15	22	Good/Fair	Yes
166	<i>Quercus lobata</i> valley oak	8,12,13,16	49	Fair	Yes
167	<i>Quercus lobata</i> valley oak	18	18	Good/Fair	Yes
168	<i>Quercus lobata</i> valley oak	15	15	Good	Yes
169	<i>Quercus lobata</i> valley oak	19	19	Good/Fair	Yes
170	<i>Quercus wislizeni</i> interior live oak	4,5,7	16	Fair	Yes
171	<i>Quercus lobata</i> valley oak	4,5,8	17	Fair	Yes
172	<i>Prunus</i> sp.	4,5,8,9	26	Fair	Yes
173	<i>Quercus wislizeni</i> interior live oak	6,11	17	Good/Fair	Yes
174	<i>Quercus wislizeni</i> interior live oak	4,7	11	Fair	Yes
175	<i>Quercus lobata</i> valley oak	11	11	Good/Fair	Yes
176	<i>Quercus lobata</i> valley oak	22,25	47	Good/Fair	Yes
177	<i>Quercus lobata</i> valley oak	20	20	Good/Fair	Yes
178	<i>Quercus lobata</i> valley oak	11	11	Good/Fair	Yes

Tree ID ¹	Species	DSH ² (inches)	Total DSH	Condition ³	Protected Tree ⁴
179	<i>Quercus lobata</i> valley oak	7	7	Fair	Yes
180	<i>Quercus wislizeni</i> interior live oak	7,13	20	Good/Fair	Yes
181	<i>Quercus lobata</i> valley oak	9	9	Fair	Yes
182	<i>Quercus lobata</i> valley oak	14	14	Fair	Yes
183	Unknown ornamental ⁵	12,14	26	Fair	Yes
184	<i>Quercus lobata</i> valley oak	26	26	Fair	Yes
185	<i>Quercus lobata</i> valley oak	8,12	20	Fair	Yes
186	<i>Prunus</i> sp.	10,13	23	Poor	Yes
187	<i>Quercus lobata</i> valley oak	15	15	Fair	Yes
188	<i>Quercus agrifolia</i> coast live oak	14	14	Good	Yes
189	<i>Quercus lobata</i> valley oak	13	13	Good/Fair	Yes
190	<i>Quercus agrifolia</i> coast live oak	9	9	Good	No
191	<i>Quercus agrifolia</i> coast live oak	7	7	Good	No
192	<i>Quercus agrifolia</i> coast live oak	17,23	40	Good	Yes
193	Unknown ornamental ⁵	20	20	Fair	Yes
194	<i>Quercus lobata</i> valley oak	25	25	Good/Fair	Yes
195	<i>Quercus agrifolia</i> coast live oak	18	18	Good	Yes
196	<i>Quercus agrifolia</i> coast live oak	6,7	13	Fair	Yes
197	<i>Quercus lobata</i> valley oak	9	9	Fair	Yes
198	<i>Quercus lobata</i> valley oak	10	10	Good/Fair	Yes
199	<i>Quercus lobata</i> valley oak	8	8	Good/Fair	Yes
200	<i>Quercus lobata</i> valley oak	24	24	Good	Yes
201	<i>Quercus lobata</i> valley oak	8	8	Fair/Poor	Yes
202	<i>Quercus lobata</i> valley oak	15,17	32	Good/Fair	Yes
203	<i>Quercus agrifolia</i> coast live oak	9	9	Good/Fair	No
204	<i>Quercus lobata</i> valley oak	8	8	Good	Yes

Tree ID ¹	Species	DSH ² (inches)	Total DSH	Condition ³	Protected Tree ⁴
205	<i>Quercus lobata</i> valley oak	25	25	Good	Yes
206	<i>Quercus lobata</i> valley oak	22	22	Fair	Yes
207	<i>Quercus lobata</i> valley oak	19	19	Fair	Yes
208	<i>Quercus agrifolia</i> coast live oak	26	26	Fair	Yes
209	<i>Quercus agrifolia</i> coast live oak	14,18	32	Good/Fair	Yes
210	<i>Juniperus</i> sp. Juniper	17	17	Fair/Poor	Yes
211	<i>Quercus agrifolia</i> coast live oak	12	12	Good	Yes
212	<i>Quercus agrifolia</i> coast live oak	11	11	Good/Fair	No
213	<i>Quercus agrifolia</i> coast live oak	14	14	Good	Yes
214	<i>Quercus agrifolia</i> coast live oak	11	11	Good	No
215	<i>Quercus lobata</i> valley oak	9	9	Good	Yes
471	<i>Quercus lobata</i> valley oak	10	10	Good	Yes
1000	<i>Quercus wislizeni</i> interior live oak	2	2	Good	No
1001	<i>Quercus wislizeni</i> interior live oak	3,4	7	Good	No
1002	<i>Populus fremontii</i> ssp. <i>fremontii</i> Fremont cottonwood	14	14	Dead	No
1003	<i>Populus fremontii</i> ssp. <i>fremontii</i> Fremont cottonwood	21	21	Dead	No
1004	<i>Populus fremontii</i> ssp. <i>fremontii</i> Fremont cottonwood	12,14,14	40	Dead	No
1005	<i>Quercus wislizeni</i> interior live oak	1	1	Good	No
1006	<i>Populus fremontii</i> ssp. <i>fremontii</i> Fremont cottonwood	17	17	Dead	No
1007	<i>Quercus lobata</i> valley oak	7	7	Dead	No
1008	<i>Quercus lobata</i> valley oak	3	3	Fair	No
1009	<i>Quercus lobata</i> valley oak	3	3	Fair/Poor	No
1010	<i>Quercus wislizeni</i> interior live oak	2	2	Good	No

Tree ID ¹	Species	DSH ² (inches)	Total DSH	Condition ³	Protected Tree ⁴
1011	<i>Quercus wislizeni</i> interior live oak	2,2	4	Good	No
1012	<i>Quercus wislizeni</i> interior live oak	3,4	7	Good	Yes
1013	<i>Quercus wislizeni</i> interior live oak	2,3	5	Good	No
1014	<i>Quercus wislizeni</i> interior live oak	1,1,3,3	8	Good	Yes
1015	<i>Quercus wislizeni</i> interior live oak	6,9	15	Good	Yes
1016	<i>Quercus lobata</i> valley oak	2	2	Good	No
1017	<i>Quercus lobata</i> valley oak	2	2	Good	No
1018	<i>Quercus wislizeni</i> interior live oak	3,4	7	Good	Yes
1019	<i>Quercus lobata</i> valley oak	4	4	Fair	No
1020	<i>Quercus lobata</i> valley oak	1	1	Good	No
1021	<i>Quercus wislizeni</i> interior live oak	2	2	Good	No
1022	<i>Quercus wislizeni</i> interior live oak	1	1	Good	No
1023	<i>Quercus lobata</i> valley oak	2	2	Good	No
1024	<i>Quercus wislizeni</i> interior live oak	2	2	Good	No
1025	<i>Quercus lobata</i> valley oak	1	1	Good	No
1026	<i>Quercus lobata</i> valley oak	2	2	Good	No
1027	<i>Quercus wislizeni</i> interior live oak	2	2	Good	No
1028	<i>Quercus wislizeni</i> interior live oak	1	1	Good	No
1029	<i>Quercus wislizeni</i> interior live oak	1	1	Good/Fair	No
1030	<i>Quercus wislizeni</i> interior live oak	1	1	Good	No
1031	<i>Quercus wislizeni</i> interior live oak	1	1	Good	No
1032	<i>Quercus wislizeni</i> interior live oak	1	1	Good	No
1033	<i>Quercus wislizeni</i> interior live oak	1	1	Good	No
1034	<i>Quercus wislizeni</i> interior live oak	2	2	Good	No
1035	<i>Quercus lobata</i> valley oak	1	1	Good/Fair	No

Tree ID ¹	Species	DSH ² (inches)	Total DSH	Condition ³	Protected Tree ⁴
1036	<i>Quercus lobata</i> valley oak	1	1	Good/Fair	No
1037	<i>Quercus wislizeni</i> interior live oak	3	3	Good	No
1038	<i>Quercus lobata</i> valley oak	1	1	Good	No
1039	<i>Quercus lobata</i> valley oak	2	2	Good	No
1040	<i>Quercus wislizeni</i> interior live oak	3	3	Good	No
1041	<i>Quercus lobata</i> valley oak	2	2	Good	No
1042	<i>Quercus wislizeni</i> interior live oak	2	2	Good	No
1043	<i>Quercus lobata</i> valley oak	1	1	Good/Fair	No
1044	<i>Quercus lobata</i> valley oak	1	1	Good/Fair	No
1045	<i>Quercus wislizeni</i> interior live oak	3	3	Good	No
1046	<i>Quercus wislizeni</i> interior live oak	3	3	Good	No
1047	<i>Quercus lobata</i> valley oak	2	2	Good	No
1048	<i>Quercus lobata</i> valley oak	2	2	Good	No
1049	<i>Quercus lobata</i> valley oak	2	2	Good	No
1050	<i>Quercus wislizeni</i> interior live oak	2	2	Good	No
1051	<i>Quercus lobata</i> valley oak	1	1	Good	No
1052	<i>Quercus lobata</i> valley oak	2	2	Good	No
1053	<i>Quercus lobata</i> valley oak	3	3	Good	No
1054	<i>Quercus lobata</i> valley oak	2	2	Good	No
1055	<i>Quercus wislizeni</i> interior live oak	2	2	Good	No
1056	<i>Quercus lobata</i> valley oak	2	2	Good	No
1057	<i>Quercus lobata</i> valley oak	2	2	Good/Fair	No
1058	<i>Quercus lobata</i> valley oak	2	2	Good	No
1059	<i>Quercus lobata</i> valley oak	2	2	Good	No
1060	<i>Quercus lobata</i> valley oak	2	2	Good	No

Tree ID ¹	Species	DSH ² (inches)	Total DSH	Condition ³	Protected Tree ⁴
1061	<i>Quercus wislizeni</i> interior live oak	2	2	Good	No
1062	<i>Quercus lobata</i> valley oak	2	2	Good	No
1063	<i>Quercus lobata</i> valley oak	5	5	Good	No
1064	<i>Quercus lobata</i> valley oak	2	2	Good	No
1065	<i>Quercus lobata</i> valley oak	1	1	Fair	No
1066	<i>Quercus lobata</i> valley oak	6	6	Good	Yes
1067	<i>Quercus lobata</i> valley oak	3	3	Good	No
1068	<i>Quercus lobata</i> valley oak	3	3	Good	No
1069	<i>Quercus wislizeni</i> interior live oak	4	4	Good	No
1070	<i>Quercus wislizeni</i> interior live oak	3	3	Good	No
1071	<i>Quercus lobata</i> valley oak	2	2	Good	No
1072	<i>Quercus wislizeni</i> interior live oak	3	3	Good	No
1073	<i>Quercus lobata</i> valley oak	2	2	Good	No
1074	<i>Quercus wislizeni</i> interior live oak	2	2	Good	No
1075	<i>Quercus lobata</i> valley oak	1	1	Good	No
1076	<i>Quercus lobata</i> valley oak	1	1	Good/Fair	No
1077	<i>Quercus lobata</i> valley oak	1	1	Good/Fair	No
1078	<i>Quercus lobata</i> valley oak	2	2	Good	No
1079	<i>Quercus lobata</i> valley oak	3	3	Good	No
1080	<i>Quercus lobata</i> valley oak	3	3	Good	No
1081	<i>Quercus lobata</i> valley oak	3	3	Good	No
1082	<i>Quercus lobata</i> valley oak	2	2	Good/Fair	No
1083	<i>Quercus lobata</i> valley oak	3	3	Good	No
1084	<i>Quercus wislizeni</i> interior live oak	3	3	Good	No
1085	<i>Quercus wislizeni</i> interior live oak	2	2	Good	No

Tree ID ¹	Species	DSH ² (inches)	Total DSH	Condition ³	Protected Tree ⁴
1086	<i>Quercus wislizeni</i> interior live oak	2	2	Good	No
1087	<i>Quercus lobata</i> valley oak	3	3	Good	No
1088	<i>Quercus lobata</i> valley oak	3	3	Good	No
1089	<i>Quercus lobata</i> valley oak	2	2	Good/Fair	No
1090	<i>Quercus wislizeni</i> interior live oak	4	4	Good	No
1091	<i>Quercus lobata</i> valley oak	1	1	Good/Fair	No
1092	<i>Quercus lobata</i> valley oak	2	2	Good	No
1093	<i>Quercus lobata</i> valley oak	3	3	Good	No
1094	<i>Quercus wislizeni</i> interior live oak	3	3	Good	No
1095	<i>Quercus lobata</i> valley oak	1	1	Good/Fair	No
1096	<i>Quercus lobata</i> valley oak	1	1	Fair	No
1097	<i>Quercus wislizeni</i> interior live oak	4	4	Good	No
1098	<i>Quercus wislizeni</i> interior live oak	2	2	Good	No
1099	<i>Quercus lobata</i> valley oak	3	3	Good	No
1100	<i>Quercus wislizeni</i> interior live oak	3	3	Good	No
1101	<i>Quercus lobata</i> valley oak	3	3	Good	No
1102	<i>Quercus lobata</i> valley oak	1	1	Fair	No
1103	<i>Quercus lobata</i> valley oak	2	2	Good/Fair	No
1104	<i>Quercus wislizeni</i> interior live oak	4	4	Good	No
1105	<i>Quercus lobata</i> valley oak	3	3	Good	No
1106	<i>Quercus lobata</i> valley oak	2	2	Good/Fair	No
1107	<i>Quercus lobata</i> valley oak	1	1	Fair	No
1108	<i>Quercus lobata</i> valley oak	2	2	Fair	No
1109	<i>Quercus wislizeni</i> interior live oak	8	8	Good	Yes
1110	<i>Quercus lobata</i>	4	4	Good	No

Tree ID ¹	Species	DSH ² (inches)	Total DSH	Condition ³	Protected Tree ⁴
1111	<i>Quercus wislizeni</i> interior live oak	4	4	Good	No
1112	<i>Quercus wislizeni</i> interior live oak	3,3,3,4	13	Good	Yes
1113	<i>Prunus</i> sp.	10	10	Dead	No
1114	<i>Quercus wislizeni</i> interior live oak	5	5	Fair	No
1115	<i>Fraxinus latifolia</i> Oregon ash	5,6,6,8,10,11	46	Dead	No
1116	<i>Quercus lobata</i> valley oak	3	3	Fair	No
1117	<i>Prunus</i> sp.	6,9	15	Dead	No
1118	<i>Quercus lobata</i> valley oak	2	2	Good/Fair	No
1119	<i>Quercus lobata</i> valley oak	3	3	Good	No
1120	<i>Quercus wislizeni</i> interior live oak	3	3	Good	No
1121	<i>Quercus lobata</i> valley oak	1	1	Good/Fair	No
1122	<i>Quercus wislizeni</i> interior live oak	2	2	Good	No
1123	<i>Quercus lobata</i> valley oak	1	1	Good/Fair	No
1124	<i>Quercus wislizeni</i> interior live oak	3	3	Good	No
1125	<i>Quercus wislizeni</i> interior live oak	4	4	Good	No
1126	<i>Quercus lobata</i> valley oak	3	3	Good	No
1127	<i>Quercus wislizeni</i> interior live oak	3	3	Good	No
1128	<i>Quercus wislizeni</i> interior live oak	2	2	Fair	No
1129	<i>Quercus lobata</i> valley oak	2	2	Good	No
1130	<i>Quercus wislizeni</i> interior live oak	4	4	Good	No
1131	<i>Prunus</i> sp.	4,5,5,5	19	Poor	Yes
1132	<i>Quercus lobata</i> valley oak	5	5	Fair	No
1133	<i>Prunus</i> sp.	4,4,5	13	Poor	Yes
1134	<i>Prunus</i> sp.	4,6,6	16	Poor	Yes
1135	<i>Prunus</i> sp.	3,4,4,6,6	23	Poor	Yes
1136	<i>Prunus</i> sp.	5,5,6	16	Poor	Yes
1137	<i>Prunus</i> sp.	5,7,7,9	28	Poor	Yes
1138	<i>Prunus</i> sp.	3,3,5	11	Poor	No
1139	<i>Prunus</i> sp.	4,5	9	Poor	No
1140	<i>Prunus</i> sp.	4	4	Poor	No

Tree ID ¹	Species	DSH ² (inches)	Total DSH	Condition ³	Protected Tree ⁴
1141	<i>Quercus lobata</i> valley oak	3,4,4,4,5	20	Fair	Yes
1142	<i>Quercus wislizeni</i> interior live oak	5	5	Good/Fair	No
1143	<i>Prunus</i> sp.	5,5,6	16	Poor	Yes
1144	<i>Quercus wislizeni</i> interior live oak	6	6	Fair	Yes
1145	<i>Quercus lobata</i> valley oak	6	6	Fair/Poor	Yes
1146	<i>Quercus wislizeni</i> interior live oak	2	2	Fair	No
1147	<i>Prunus</i> sp.	4	4	Fair/Poor	No
1148	<i>Quercus wislizeni</i> interior live oak	2,2,3,3	10	Good	Yes
1149	<i>Quercus wislizeni</i> interior live oak	3	3	Fair	No
1150	<i>Quercus wislizeni</i> interior live oak	4,5	9	Good	Yes
1151	<i>Quercus lobata</i> valley oak	4	4	Fair	No
1152	<i>Quercus wislizeni</i> interior live oak	3	3	Fair	No
1153	<i>Quercus lobata</i> valley oak	3	3	Fair	No
1154	<i>Quercus lobata</i> valley oak	2	2	Fair	No
1155	<i>Quercus wislizeni</i> interior live oak	3,5,5	13	Good	Yes
1156	<i>Quercus lobata</i> valley oak	2,4,4	10	Fair	Yes
1157	<i>Quercus wislizeni</i> interior live oak	2,3,3,5	13	Fair	Yes
1158	<i>Quercus lobata</i> valley oak	8	8	Fair	Yes
1159	<i>Quercus wislizeni</i> interior live oak	7	7	Fair	Yes
1160	<i>Quercus lobata</i> valley oak	6	6	Good/Fair	Yes
1161	<i>Quercus agrifolia</i> coast live oak	5	5	Fair	No
1162	<i>Quercus agrifolia</i> coast live oak	4,5	9	Fair	No
1163	<i>Quercus lobata</i> valley oak	5	5	Fair	No
1164	<i>Ligustrum lucidum</i> glossy privet	1,3,4,4	12	Fair	Yes
1165	<i>Juniperus</i> sp. Juniper	4,4,4	12	Fair	Yes
1166	<i>Quercus agrifolia</i>	1	1	Poor	No

Tree ID ¹	Species	DSH ² (inches)	Total DSH	Condition ³	Protected Tree ⁴
	coast live oak				
1167	<i>Quercus agrifolia</i> coast live oak	2	2	Fair/Poor	No
1168	<i>Quercus agrifolia</i> coast live oak	2,4	6	Good	No
1169	<i>Quercus agrifolia</i> coast live oak	2	2	Good	No
1170	Unknown ornamental ⁵	14	14	Good/Fair	Yes
1171	Unknown ornamental ⁵	12	12	Good	Yes
1172	Unknown ornamental ⁵	15	15	Good	Yes
1173	Unknown ornamental ⁵	12	12	Good	Yes
1174	Unknown ornamental ⁵	14	14	Good/Fair	Yes
1175	Unknown ornamental ⁵	16	16	Good/Fair	Yes
1176	Unknown ornamental ⁵	22	22	Good/Fair	Yes
1177	Unknown ornamental ⁵	26	26	Fair/Poor	Yes

¹ Tree IDs 100-129 were not tagged with a metal ID tag during the survey due to inaccessibility.

² DSH (diameter at standard height): the diameter of a tree measured at 4.5 feet above ground level. Trees with multiple trunks and DSH measurements are separated by a comma.

³ General health of the tree including root collar, trunk, limbs, foliage, structure, and general vigor.

⁴ Tree protected under Chapter 19.12 (Preservation and Protection of Trees) of the Rancho Cordova Code of Ordinances.

⁵ Due to the timing of the tree survey (January and February), deciduous ornamental trees were not bearing leaves which made identification of some tree species difficult.