



*NOISE RECEPTOR & MONITORING LOCATION MAP
18618 Oxnard Street Project
Imagery via Google*

1. Oxnard Street, near Project

Noise Report

Summary

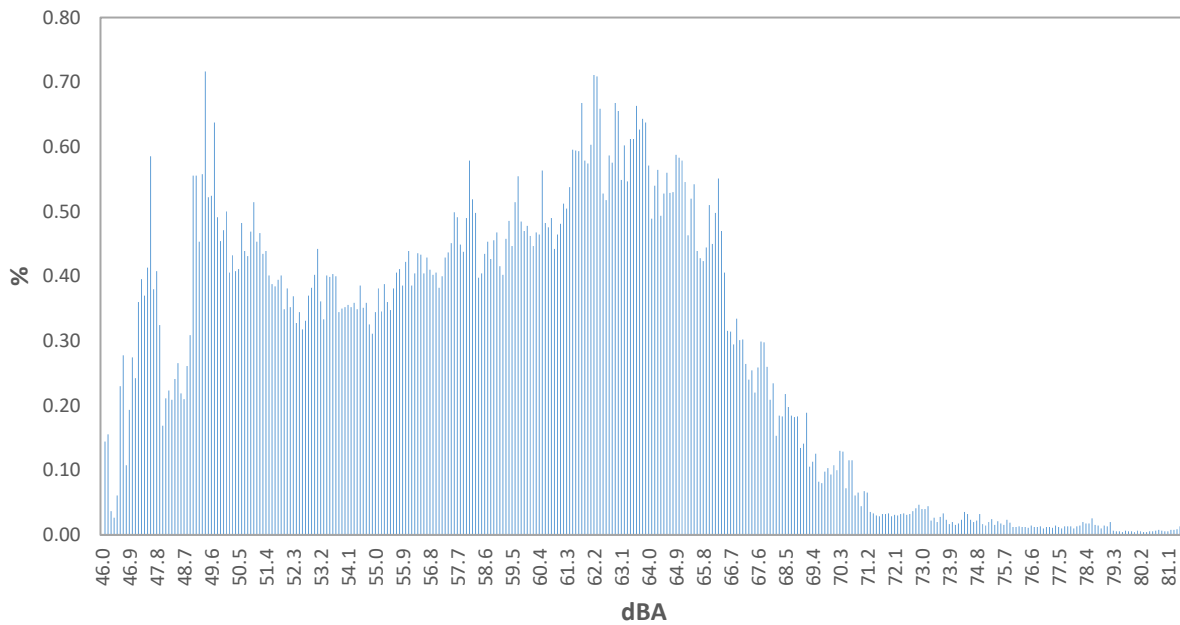
Date: Friday, July 30, 2021
Start Time: 12:12pm
End Time: 12:27pm
File Name: 831_Data.035
Device Model: Larson Davis Model 831
Weighting: A
Response: Slow

Results

<u>Description</u>	<u>Value</u>	<u>Description</u>	<u>Value</u>
L _{eq}	63.7dB	L ₁₀	66.6dB
L _{max}	81.7dB	L ₅₀	59.1dB
L _{min}	46.1dB	L ₉₀	49.4dB

LAS > 65.0 dBA (Exceedance Count/Duration): 61, 218.4s
LAS > 85.0 dBA (Exceedance Count/Duration): 0, 0s

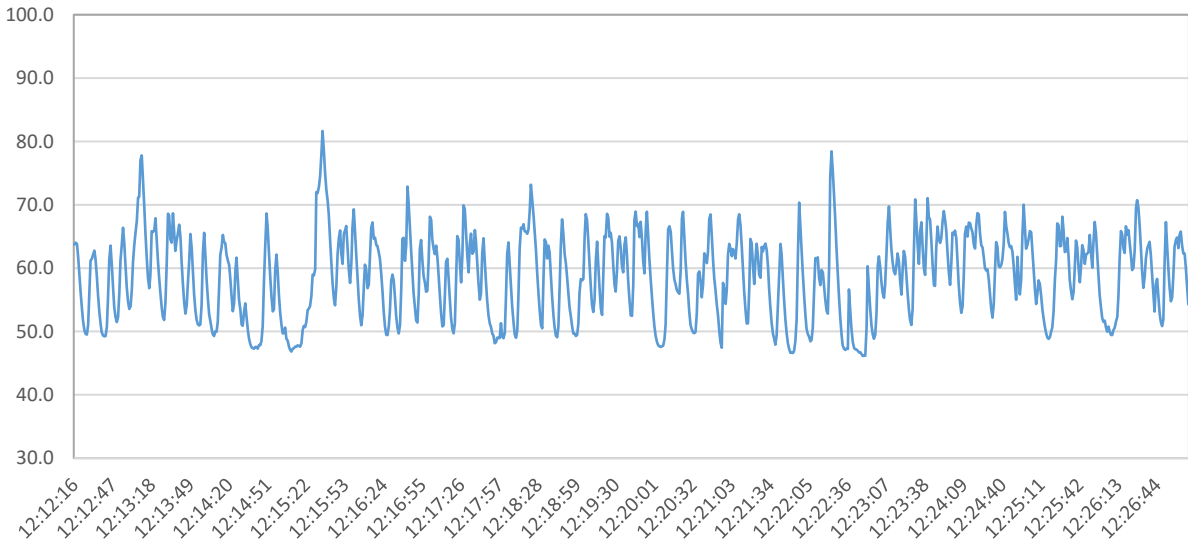
Statistics Chart



Statistics Table

dB	0.0	0.1	0.2	0.3	0.4	0.5	0.6	0.7	0.8	0.9	%
46.0	0.00	0.14	0.16	0.04	0.03	0.06	0.23	0.28	0.11	0.19	1.2
47.0	0.27	0.24	0.36	0.40	0.37	0.41	0.59	0.38	0.41	0.32	3.8
48.0	0.17	0.21	0.22	0.21	0.24	0.27	0.22	0.21	0.26	0.31	2.32
49.0	0.56	0.56	0.45	0.56	0.72	0.52	0.52	0.64	0.49	0.45	5.47
50.0	0.47	0.50	0.41	0.43	0.41	0.41	0.48	0.44	0.43	0.47	4.45
51.0	0.51	0.45	0.47	0.43	0.44	0.40	0.39	0.38	0.39	0.40	4.28
52.0	0.35	0.38	0.35	0.37	0.33	0.34	0.32	0.33	0.37	0.38	3.52
53.0	0.40	0.44	0.36	0.33	0.40	0.40	0.40	0.40	0.34	0.35	3.84
54.0	0.35	0.36	0.35	0.36	0.35	0.39	0.35	0.36	0.33	0.31	3.50
55.0	0.34	0.38	0.35	0.39	0.36	0.35	0.38	0.41	0.41	0.39	3.75
56.0	0.42	0.44	0.39	0.40	0.44	0.43	0.40	0.43	0.41	0.40	4.17
57.0	0.41	0.38	0.40	0.43	0.44	0.45	0.50	0.49	0.45	0.44	4.38
58.0	0.49	0.58	0.52	0.50	0.40	0.40	0.43	0.45	0.43	0.46	4.66
59.0	0.47	0.42	0.40	0.46	0.49	0.45	0.51	0.55	0.48	0.47	4.70
60.0	0.48	0.46	0.45	0.47	0.46	0.56	0.48	0.48	0.49	0.44	4.77
61.0	0.46	0.48	0.51	0.50	0.54	0.60	0.59	0.59	0.67	0.58	5.53
62.0	0.57	0.60	0.71	0.71	0.66	0.53	0.52	0.59	0.58	0.67	6.13
63.0	0.66	0.55	0.60	0.55	0.61	0.61	0.66	0.63	0.64	0.64	6.15
64.0	0.57	0.49	0.54	0.56	0.49	0.53	0.56	0.53	0.53	0.59	5.39
65.0	0.58	0.58	0.55	0.46	0.52	0.54	0.44	0.43	0.42	0.44	4.97
66.0	0.51	0.45	0.50	0.55	0.47	0.41	0.32	0.31	0.29	0.33	4.14
67.0	0.30	0.30	0.26	0.24	0.25	0.22	0.26	0.30	0.30	0.26	2.70
68.0	0.21	0.23	0.15	0.18	0.18	0.22	0.20	0.18	0.18	0.18	1.93
69.0	0.13	0.14	0.19	0.11	0.11	0.13	0.08	0.08	0.10	0.10	1.17
70.0	0.09	0.11	0.10	0.13	0.13	0.07	0.12	0.12	0.06	0.07	0.99
71.0	0.04	0.07	0.07	0.04	0.03	0.03	0.03	0.03	0.03	0.03	0.40
72.0	0.03	0.03	0.03	0.03	0.03	0.03	0.03	0.04	0.04	0.05	0.34
73.0	0.04	0.04	0.04	0.02	0.03	0.02	0.03	0.03	0.02	0.02	0.29
74.0	0.02	0.02	0.02	0.02	0.04	0.03	0.02	0.02	0.02	0.03	0.24
75.0	0.02	0.01	0.02	0.02	0.02	0.02	0.02	0.02	0.02	0.02	0.19
76.0	0.01	0.01	0.01	0.01	0.01	0.01	0.01	0.01	0.01	0.01	0.13
77.0	0.01	0.01	0.01	0.01	0.01	0.01	0.01	0.01	0.01	0.01	0.12
78.0	0.01	0.01	0.01	0.02	0.02	0.02	0.03	0.02	0.01	0.01	0.16
79.0	0.01	0.01	0.02	0.01	0.01	0.01	0.00	0.01	0.01	0.01	0.09
80.0	0.00	0.01	0.01	0.00	0.00	0.01	0.01	0.01	0.01	0.01	0.06
81.0	0.01	0.01	0.01	0.01	0.01	0.01	0.02	0.02	0.00	0.00	0.09

Logged Data Chart



Summary

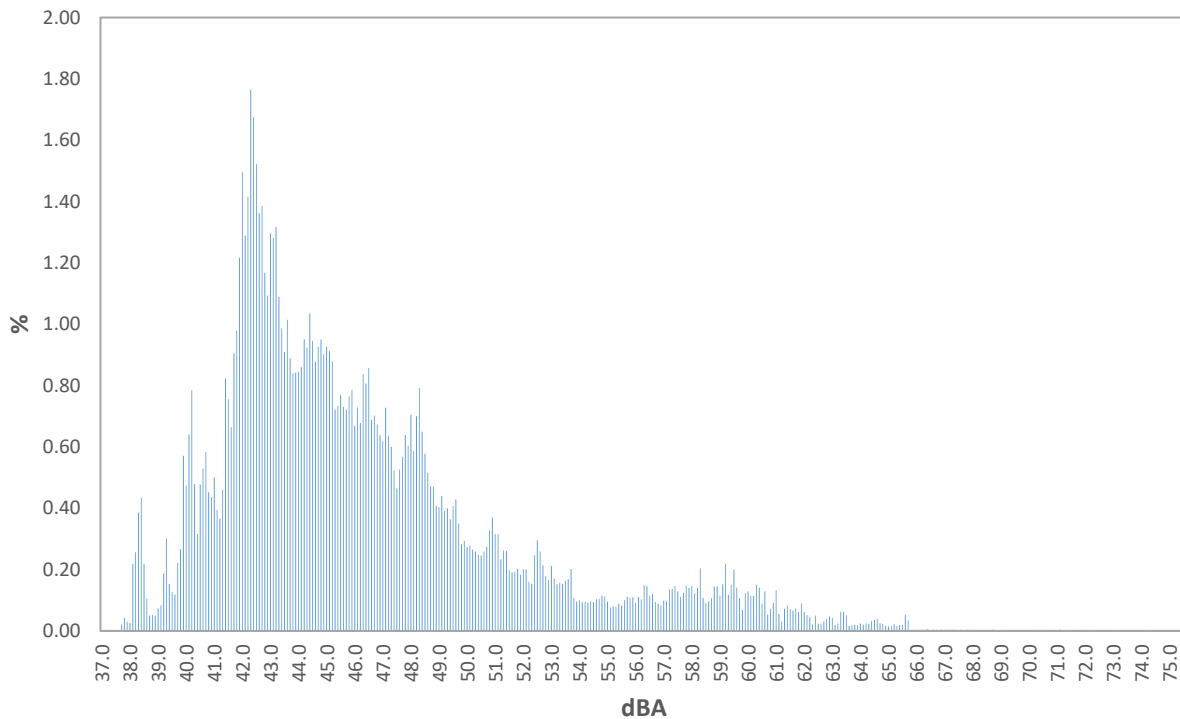
Date: Friday, July 30, 2021
Start Time: 12:30pm
End Time: 12:45pm
File Name: 831_Data.036
Device Model: Larson Davis Model 831
Weighting: A
Response: Slow

Results

Description	Value	Description	Value
L _{eq}	52.4dB	L ₁₀	54.3dB
L _{max}	75.6dB	L ₅₀	44.9dB
L _{min}	37.7dB	L ₉₀	41.1dB

LAS > 65.0 dBA (Exceedance Count/Duration): 2, 5.9s
LAS > 85.0 dBA (Exceedance Count/Duration): 0, 0s

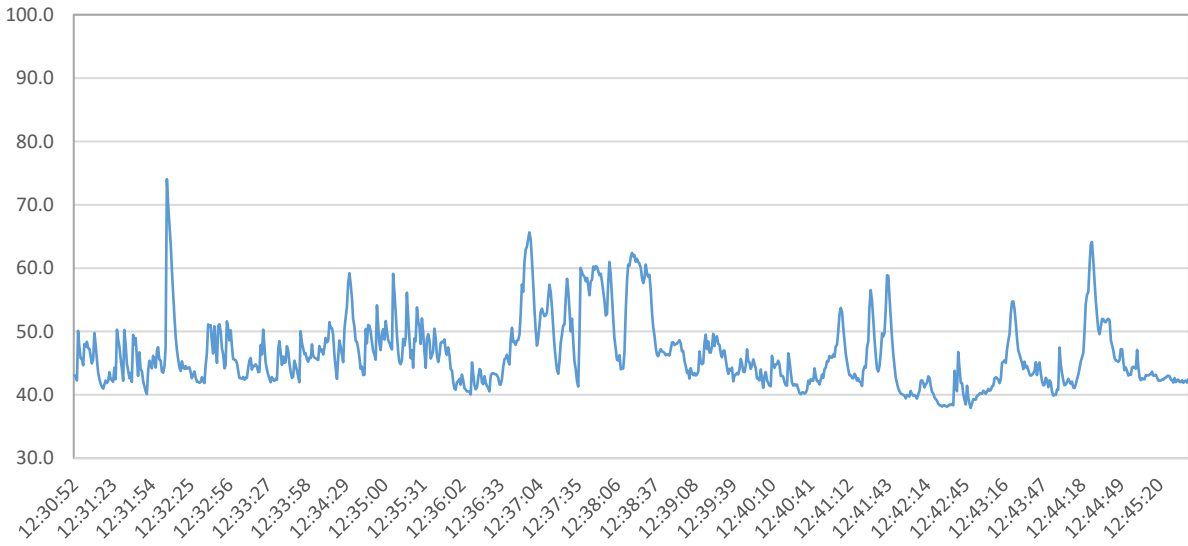
Statistics Chart



Statistics Table

dB	0.0	0.1	0.2	0.3	0.4	0.5	0.6	0.7	0.8	0.9	%
37.0	0.00	0.00	0.00	0.00	0.00	0.00	0.00	0.02	0.04	0.03	0.1
38.0	0.03	0.22	0.26	0.39	0.43	0.22	0.11	0.05	0.05	0.05	1.8
39.0	0.07	0.08	0.19	0.30	0.15	0.13	0.12	0.22	0.27	0.57	2.10
40.0	0.47	0.64	0.78	0.48	0.32	0.48	0.53	0.58	0.45	0.44	5.17
41.0	0.50	0.39	0.37	0.46	0.82	0.76	0.66	0.91	0.98	1.22	7.07
42.0	1.50	1.29	1.42	1.76	1.68	1.52	1.36	1.39	1.17	1.09	14.17
43.0	1.30	1.28	1.32	1.09	0.99	0.91	1.01	0.89	0.84	0.84	10.47
44.0	0.84	0.86	0.95	0.92	1.04	0.95	0.88	0.93	0.95	0.90	9.22
45.0	0.93	0.91	0.88	0.72	0.73	0.77	0.73	0.72	0.76	0.79	7.94
46.0	0.67	0.73	0.68	0.84	0.81	0.86	0.69	0.70	0.67	0.64	7.28
47.0	0.62	0.73	0.64	0.60	0.52	0.46	0.53	0.57	0.64	0.60	5.91
48.0	0.70	0.59	0.70	0.79	0.65	0.58	0.52	0.47	0.47	0.41	5.88
49.0	0.40	0.44	0.39	0.40	0.36	0.41	0.43	0.35	0.28	0.29	3.76
50.0	0.27	0.28	0.27	0.26	0.25	0.25	0.26	0.27	0.33	0.37	2.80
51.0	0.32	0.32	0.23	0.26	0.26	0.20	0.19	0.19	0.20	0.18	2.35
52.0	0.20	0.20	0.16	0.15	0.25	0.30	0.26	0.21	0.18	0.17	2.08
53.0	0.21	0.17	0.15	0.16	0.15	0.16	0.17	0.20	0.11	0.10	1.58
54.0	0.10	0.09	0.09	0.09	0.10	0.09	0.10	0.10	0.11	0.11	1.01
55.0	0.10	0.08	0.08	0.08	0.09	0.08	0.10	0.11	0.11	0.11	0.93
56.0	0.09	0.11	0.10	0.15	0.15	0.12	0.12	0.09	0.09	0.08	1.10
57.0	0.10	0.10	0.14	0.14	0.15	0.13	0.11	0.12	0.15	0.14	1.27
58.0	0.15	0.12	0.14	0.20	0.11	0.09	0.10	0.11	0.14	0.15	1.30
59.0	0.12	0.15	0.22	0.12	0.15	0.20	0.14	0.11	0.07	0.12	1.39
60.0	0.13	0.11	0.11	0.15	0.14	0.09	0.13	0.05	0.07	0.09	1.08
61.0	0.13	0.06	0.03	0.07	0.08	0.07	0.07	0.07	0.06	0.09	0.74
62.0	0.06	0.05	0.04	0.02	0.05	0.02	0.02	0.03	0.04	0.05	0.39
63.0	0.04	0.02	0.02	0.06	0.06	0.05	0.02	0.02	0.02	0.02	0.34
64.0	0.02	0.02	0.02	0.02	0.03	0.04	0.04	0.03	0.02	0.02	0.26
65.0	0.01	0.02	0.02	0.02	0.02	0.02	0.05	0.03	0.00	0.00	0.20
66.0	0.00	0.00	0.00	0.00	0.01	0.00	0.00	0.00	0.00	0.00	0.04
67.0	0.00	0.00	0.00	0.00	0.00	0.00	0.00	0.00	0.00	0.00	0.04
68.0	0.00	0.00	0.00	0.00	0.00	0.00	0.00	0.00	0.00	0.00	0.03
69.0	0.00	0.00	0.00	0.00	0.00	0.00	0.00	0.00	0.00	0.00	0.03
70.0	0.00	0.00	0.00	0.00	0.00	0.00	0.00	0.00	0.00	0.00	0.03
71.0	0.00	0.00	0.00	0.00	0.00	0.00	0.00	0.00	0.00	0.00	0.03
72.0	0.00	0.00	0.00	0.00	0.00	0.00	0.00	0.00	0.00	0.00	0.03
73.0	0.00	0.00	0.00	0.00	0.00	0.00	0.00	0.00	0.00	0.00	0.03
74.0	0.00	0.00	0.00	0.00	0.00	0.00	0.00	0.00	0.00	0.00	0.03
75.0	0.00	0.00	0.00	0.00	0.00	0.00	0.01	0.00	0.00	0.00	0.02

Logged Data Chart



Construction Noise Impact Analysis

noah tanski environmental consulting

Tarzana Terrace: DEMOLITION

Ambient Noise Level:	52.4 dBA Leq
Distance:	n/a feet

Unmitigated

Equipment Noise Levels

Equipment	Daily Work Area - Noise Level at Receptor	Usage %	Adjusted Noise Level
Front-end Loader	68.1	0.4	64.1
Front-end Loader	68.1	0.4	64.1
-	0	1	0.0
-	0	1	0.0
-	0	1	0.0
Combined dBA Leq:			67.1

Unmitigated Construction Noise Impact

Combined Equipment Noise Level	67.1 dBA Leq
Total Shielding	0 dBA
Ground Factor	0
Distance (n/a per calculations)	50 ft
Unmitigated Construction Noise Level	67.1 dBA Leq
Ambient Noise Level	52.4 dBA
New Noise Level	67.3 dBA Leq
Unmitigated Noise Increase	14.9 dBA

Mitigated

Equipment Noise Levels

Equipment	Daily Work Area - Noise Level at Receptor	Usage %	Adjusted Noise Level
Front-end Loader	68.1	0.4	64.1
Front-end Loader	68.1	0.4	64.1
-	0	1	0.0
-	0	1	0.0
-	0	1	0.0
Combined dBA Leq:			67.1

Mitigated Construction Noise Impact

Combined Equipment Noise Level	67.1 dBA Leq
Total Shielding (sound barrier)	15 dBA
Ground Factor	0
Distance (n/a per calculations)	50 ft
Mitigated Construction Noise Level	52.1 dBA Leq
Ambient Noise Level	52.4 dBA
New Noise Level	55.3 dBA Leq
Mitigated Noise Increase	2.9 dBA

Construction Noise Impact Analysis

noah tanski environmental consulting

Tarzana Treatment Center, Inc.: DEMOLITION

Ambient Noise Level:	63.7 dBA Leq
Distance:	n/a feet

Unmitigated

Equipment Noise Levels

Equipment	Daily Work Area - Noise Level at Receptor	Usage %	Adjusted Noise Level
Front-end Loader	66.1	0.4	62.1
Front-end Loader	66.1	0.4	62.1
-	0	1	0.0
-	0	1	0.0
-	0	1	0.0
Combined dBA Leq:			65.1

Unmitigated Construction Noise Impact

Combined Equipment Noise Level	65.1 dBA Leq
Total Shielding	0 dBA
Ground Factor	0
Distance (n/a per calculations)	50 ft
Unmitigated Construction Noise Level	65.1 dBA Leq
Ambient Noise Level	63.7 dBA
New Noise Level	67.5 dBA Leq
Unmitigated Noise Increase	3.8 dBA

Mitigated

Equipment Noise Levels

Equipment	Daily Work Area - Noise Level at Receptor	Usage %	Adjusted Noise Level
Front-end Loader	66.1	0.4	62.1
Front-end Loader	66.1	0.4	62.1
-	0	1	0.0
-	0	1	0.0
-	0	1	0.0
Combined dBA Leq:			65.1

Mitigated Construction Noise Impact

Combined Equipment Noise Level	65.1 dBA Leq
Total Shielding (sound barrier)	15 dBA
Ground Factor	0
Distance (n/a per calculations)	50 ft
Mitigated Construction Noise Level	50.1 dBA Leq
Ambient Noise Level	63.7 dBA
New Noise Level	63.9 dBA Leq
Mitigated Noise Increase	0.2 dBA

Construction Noise Impact Analysis

noah tanski environmental consulting

Tarzana Terrace: GRADING

Ambient Noise Level:	52.4 dBA Leq
Distance:	n/a feet

Unmitigated

Equipment Noise Levels

Equipment	Daily Work Area - Noise Level at Receptor	Usage %	Adjusted Noise Level
Bulldozer	75.7	0.4	71.7
-	0	1	0.0
-	0	1	0.0
-	0	1	0.0
-	0	1	0.0
Combined dBA Leq:			71.7

Unmitigated Construction Noise Impact

Combined Equipment Noise Level	71.7 dBA Leq
Total Shielding	0 dBA
Ground Factor	0
Distance (n/a per calculations)	50 ft
Unmitigated Construction Noise Level	71.7 dBA Leq
Ambient Noise Level	52.4 dBA
New Noise Level	71.8 dBA Leq
Unmitigated Noise Increase	19.4 dBA

Mitigated

Equipment Noise Levels

Equipment	Daily Work Area - Noise Level at Receptor	Usage %	Adjusted Noise Level
Bulldozer	75.7	0.2	68.7
-	0	1	0.0
-	0	1	0.0
-	0	1	0.0
-	0	1	0.0
Combined dBA Leq:			68.7

Mitigated Construction Noise Impact

Combined Equipment Noise Level	68.7 dBA Leq
Total Shielding (sound barrier)	15 dBA
Ground Factor	0
Distance (n/a per calculations)	50 ft
Mitigated Construction Noise Level	53.7 dBA Leq
Ambient Noise Level	52.4 dBA
New Noise Level	56.1 dBA Leq
Mitigated Noise Increase	3.7 dBA

Construction Noise Impact Analysis

noah tanski environmental consulting

Tarzana Treatment Center, Inc.: GRADING

Ambient Noise Level:	63.7 dBA Leq
Distance:	n/a feet

Unmitigated

Equipment Noise Levels

Equipment	Daily Work Area - Noise Level at Receptor	Usage %	Adjusted Noise Level
Bulldozer	73.7	0.4	69.7
-	0	1	0.0
-	0	1	0.0
-	0	1	0.0
-	0	1	0.0
Combined dBA Leq:			69.7

Unmitigated Construction Noise Impact

Combined Equipment Noise Level	69.7 dBA Leq
Total Shielding	0 dBA
Ground Factor	0
Distance (n/a per calculations)	50 ft
Unmitigated Construction Noise Level	69.7 dBA Leq
Ambient Noise Level	63.7 dBA
New Noise Level	70.7 dBA Leq
Unmitigated Noise Increase	7.0 dBA

Mitigated

Equipment Noise Levels

Equipment	Daily Work Area - Noise Level at Receptor	Usage %	Adjusted Noise Level
Bulldozer	73.7	0.2	66.7
-	0	1	0.0
-	0	1	0.0
-	0	1	0.0
-	0	1	0.0
Combined dBA Leq:			66.7

Mitigated Construction Noise Impact

Combined Equipment Noise Level	66.7 dBA Leq
Total Shielding (sound barrier)	15 dBA
Ground Factor	0
Distance (n/a per calculations)	50 ft
Mitigated Construction Noise Level	51.7 dBA Leq
Ambient Noise Level	63.7 dBA
New Noise Level	64.0 dBA Leq
Mitigated Noise Increase	0.3 dBA

Vibration Impact Analysis

noah tanski environmental consulting

Construction Vibration - PPV

Equipment:	Vibratory Roller
Equipment PPV (in/sec):	0.21
Reference Distance (ft):	25
"n" value	1.1

Unmitigated

Receptor	Distance (ft)	Vibration Level (in/sec PPV)
Tarzana Treatment Center	20	0.268
Tarzana Terrace	25	0.210
	-	-
	-	-