



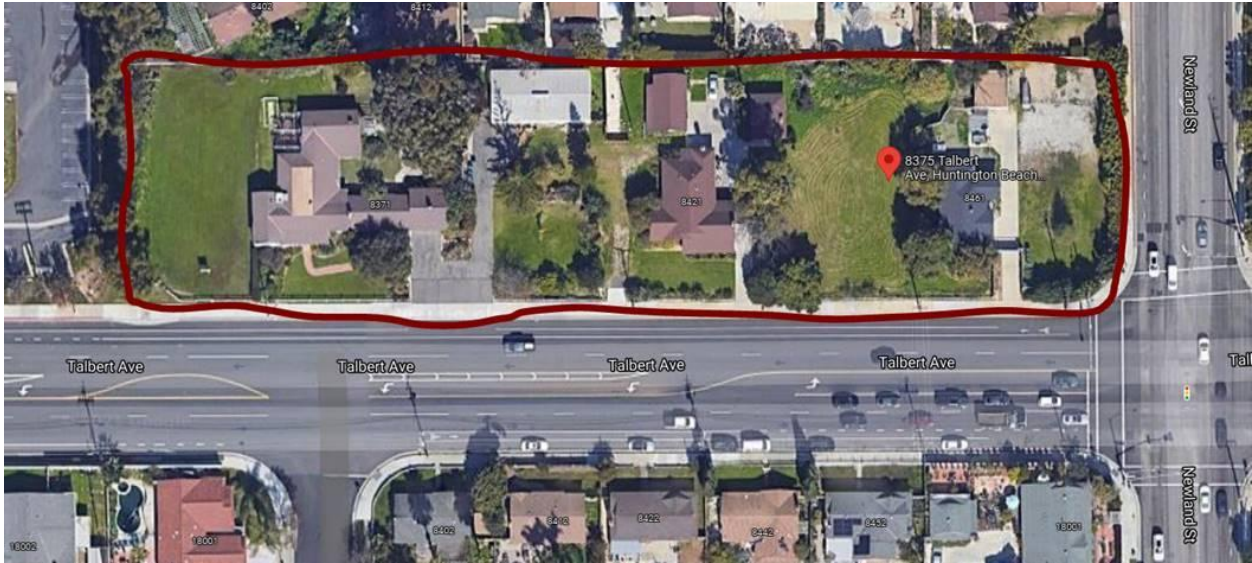
**SAGECREST**  
PLANNING + ENVIRONMENTAL

**Olson Townhomes - Planning Application No. 2021-0084**

## Appendix C-1

Tree Inventory and Tree Assessment For Huntington Beach -  
Talbert & Newland, November 2021

**TREE INVENTORY AND TREE ASSESSMENT FOR  
HUNTINGTON BEACH-TALBERT & NEWLAND  
PROJECT #92951712  
HUNTINGTON BEACH, CALIFORNIA**



**11/8/2021**

**By**

**Dane S. Shota**

**Dane S. Shota & Associates  
Arborist and Nursery Services  
B.S. Ornamental Horticulture**

**California Polytechnic University, Pomona, California**

**Certified Arborist #WE 3436A, Certified Water Auditor # MWDOC-1321**

**"Qualified Water Efficient Landscaper"**

**16835 Algonquin Street # 172, Huntington Beach, CA 92649-3825**

**Office (714) 377-1181, Cell (714) 653-4627**

**[Arbordane@yahoo.com](mailto:Arbordane@yahoo.com)**

**For**

**OLSON URBAN HOUSING , LLC**

**The Olson Company**

**3010 Old Ranch Parkway, Suite 100**

**Seal Beach, CA 90740-2751**

# TABLE OF CONTENTS

<b>OBJECTIVE</b>	<b>3</b>
<b>RECOMMENDATIONS</b>	<b>3</b>
<b>LIMITATIONS</b>	<b>3</b>
<b>COMMENTS</b>	<b>4</b>
<b>TREE INVENTORY MAP</b>	<b>12</b>
<b>TREE INVENTORY</b>	<b>13</b>
<b>GPS COODINATES</b>	<b>14</b>
<b>CONSULTED ON JOBS-ARBORIST FLYER</b>	<b>15</b>

## OBJECTIVE:

I am to assess the trees at the site of 8375 Talbert Ave of trees ten-inch diameter or larger.

## RECOMMENDATIONS:

- Any work is to be done by the latest ANSI specifications (American National Society Standard Institute).
- Dig Alert to be notified on any digging to be done such as removing tree trunks below ground.

## LIMITATIONS:

These recommendations do not constitute a complete risk assessment or warranty against continued decline or failure.

COMMENTS:



From 8375 Talbert Avenue looking towards the South East the intersection of Newland and Talbert can be seen.





Trees #1-12 on the Westside of the property from left to right.





Tree #13, Olive, *Olea europaea*





Trees #14-16.





Tree #17



Trees #18 and #19





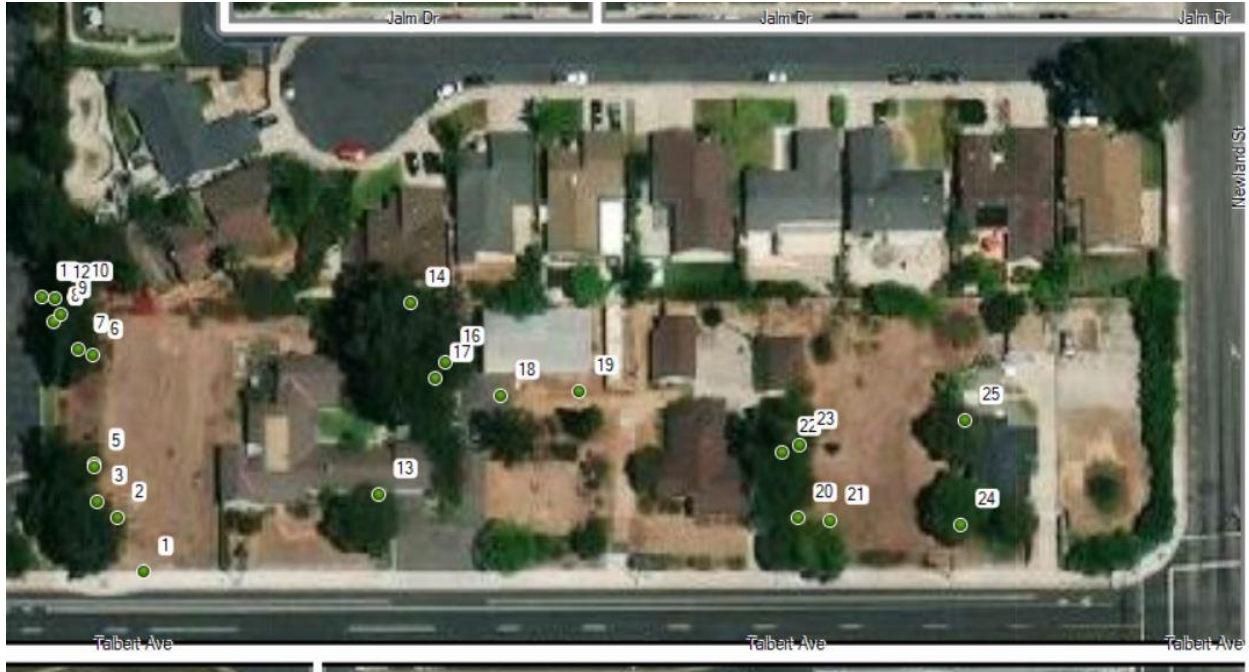
Tree #20-23





Tree #25 on the left and #24 on the right.

# TREE INVENTORY MAP





## TREE INVENTORY AND ASSESSMENTS:

Tree #	Common Name	Botanical Name	Height ' X Width ' X Diameter " at 4.5 feet (dbh)	Condition Rating	Structure Rating	Suitability for Preservation	Comments	Disposition Take out=0 / Keep=1
1	Eucalyptus	<i>Eucalyptus sp.</i>	25x15x8,12,10	3	3	Yes		1
2	Eucalyptus	<i>Eucalyptus sp.</i>	30x20x22	3	3	Yes		1
3	Eucalyptus	<i>Eucalyptus sp.</i>	40x25x31	3	3	Yes		1
4	Eucalyptus	<i>Eucalyptus sp.</i>	40x20x18	3	3	Yes		1
5	Eucalyptus	<i>Eucalyptus sp.</i>	30x15x18	3	3	Yes		1
6	Eucalyptus	<i>Eucalyptus sp.</i>	25x15x15	3	3	Yes		1
7	Eucalyptus	<i>Eucalyptus sp.</i>	30x20x20	3	3	Yes		1
8	Eucalyptus	<i>Eucalyptus sp.</i>	20x15x19	3	3	Yes		1
9	Eucalyptus	<i>Eucalyptus sp.</i>	25x15x13	3	3	Yes		1
10	Eucalyptus	<i>Eucalyptus sp.</i>	20x10x11	3	3	Yes		1
11	Eucalyptus	<i>Eucalyptus sp.</i>	12x0x18	0	0	No	Dead	0
12	Eucalyptus	<i>Eucalyptus sp.</i>	25x15x15	3	3	Yes		1
13	Olive	<i>Olea europea</i>	25x30x12,14,13,13	4	4	Yes		1
14	Eucalyptus	<i>Eucalyptus sp.</i>	60x45x24	3	3	Yes	Codominant trunks	1
15	Eucalyptus	<i>Eucalyptus sp.</i>	55x40x20	3	2	No	Trunk structure issues	0
16	Eucalyptus	<i>Eucalyptus sp.</i>	60x50x25	3	3	Yes		1
17	Eucalyptus	<i>Eucalyptus sp.</i>	15x25x16	3	3	Yes		1
18	Norfolk Island Pine	<i>Araucaria heterophylla</i>	65x15x14	4	4	Yes	Roots covered with debris	1
19	Norfolk Island Pine	<i>Araucaria heterophylla</i>	55x15x14	4	4	Yes	Roots covered with debris	1
20	Stone Pine	<i>Pinus pinea</i>	17x25x12,9,8	4	4	Yes		1
21	Pine	<i>Pinus sp.</i>	20x30x18	3	3	Yes		1
22	California Black Walnut	<i>Juglans hindsii</i>	25x30x16	3	3	Yes		1
23	Eucalyptus	<i>Eucalyptus sp.</i>	55x40x24	3	3	Yes		1
24	Pine	<i>Pinus sp.</i>	30x25x16	3	3	Yes		1
25	Weeping Bottlebrush	<i>Callistemon viminalis</i>	30x30x15	3	3	Yes		1

23 Keep and 2 Take out

Tree inventory consists of the condition and structure rating from 0-5.

5 No problem

4 No apparent problems

3 Minor problems

2 Major problems

0 or 1 Extreme problem(s).

Factors are roots, trunk, scaffold branches, smaller branches and twigs, foliage and/or buds.

There are 23 trees Suitable for preservation and 2 are not suitable for preservation.



## GPS COODINATES

ID	lat	lon
1	33.70137	-117.982
2	33.70178	-117.983
3	33.70182	-117.983
4	33.70178	-117.983
5	33.70149	-117.982
6	33.70177	-117.982
7	34.82213	-117.983
8	33.70169	-117.982
9	33.70166	-117.982
10	33.70163	-117.982
11	33.70164	-117.982
12	33.70145	-117.982
13	33.70145	-117.981
14	33.70145	-117.981
15	33.70155	-117.981
16	33.70156	-117.981
17	33.70144	-117.981
18	33.7016	-117.981
19	33.70148	-117.982
20	33.70153	-117.983
21	33.70153	-117.983
22	33.7017	-117.983
23	33.7017	-117.983
24	33.70175	-117.983
25	33.70176	-117.983

**Specializing in establishing trees, Soil Science, monitoring soil moisture, troubleshooting, and tree appraisals/inventories.**

**DANE S. SHOTA CERTIFIED ARBORIST HAS CONSULTED ON:**

ARMAGEDDON – A TOUCHTONE RELEASE

BERTH 93 – PORT OF LOS ANGELES

BOEING – LONG BEACH

CABRILLO BEACH - SAN PEDRO

DALE VS. L.A. CITY

DEFENSE FUEL REGION WEST- REMEDIATION OF MTBE IN SAN PEDRO

ECHO PARK LAKE – LOS ANGELES

HUNTINGTON BEACH – PYTOREMEDIATION

GORDON GIBSON CONSTRUCTION-SANTA MONICA

GUASTI WINERY - ONTARIO

L.A. CITY HALL

L.A. CITY VS. L.A. COUNTY

LITTLE CO. OF MARY HOSPITAL - TORRANCE

LOYOLA MARYMOUNT COLLEGE – WESTCHESTER

LOEWS BEACH HOTEL – SANTA MONICA

NORWALK TANK FARM-REMEDICATION OF MTBE & 1,2 DCA TOXICITY

PALOS VERDES HOA

PASADENA TOURNAMENT OF ROSES CORPORATE BUILDING – PASADENA

PEGASUS SCHOOL – HUNTINGTON BEACH

PORT'S O' CALL- SAN PEDRO

RONALD REAGAN FEDERAL BUILDING – SANTA ANA

SAMS CLUB- FOUNTAIN VALLEY

ST. REGIS MONARCH BAY-DANA POINT

STUART LITTLE-THE MOVIE

THE WATERFRONT BEACH RESORT- A HILTON HOTEL HUNTINGTON BEACH

TOYOTA TRUCK BED DIVISION – DOWNEY

TRI-POINTE HOMES

WALT DISNEY CONCERT HALL – LA

WAYFARERS CHAPEL – PALOS VERDES

WESTFIELD SHOPPING CENTER – CANOGA PARK

Dane S. Shota & Associates, Nursery and Arborist Services, Certified Arborist #WE 3436  
Bachelor of Science in Ornamental Horticulture, California Polytechnic University, Pomona  
16835 Algonquin Street # 172, Huntington Beach, CA 92649-3825, Huntington Beach, CA 92649-3825  
Office (714) 377-1181, ARBORDANE@YAHOO.COM