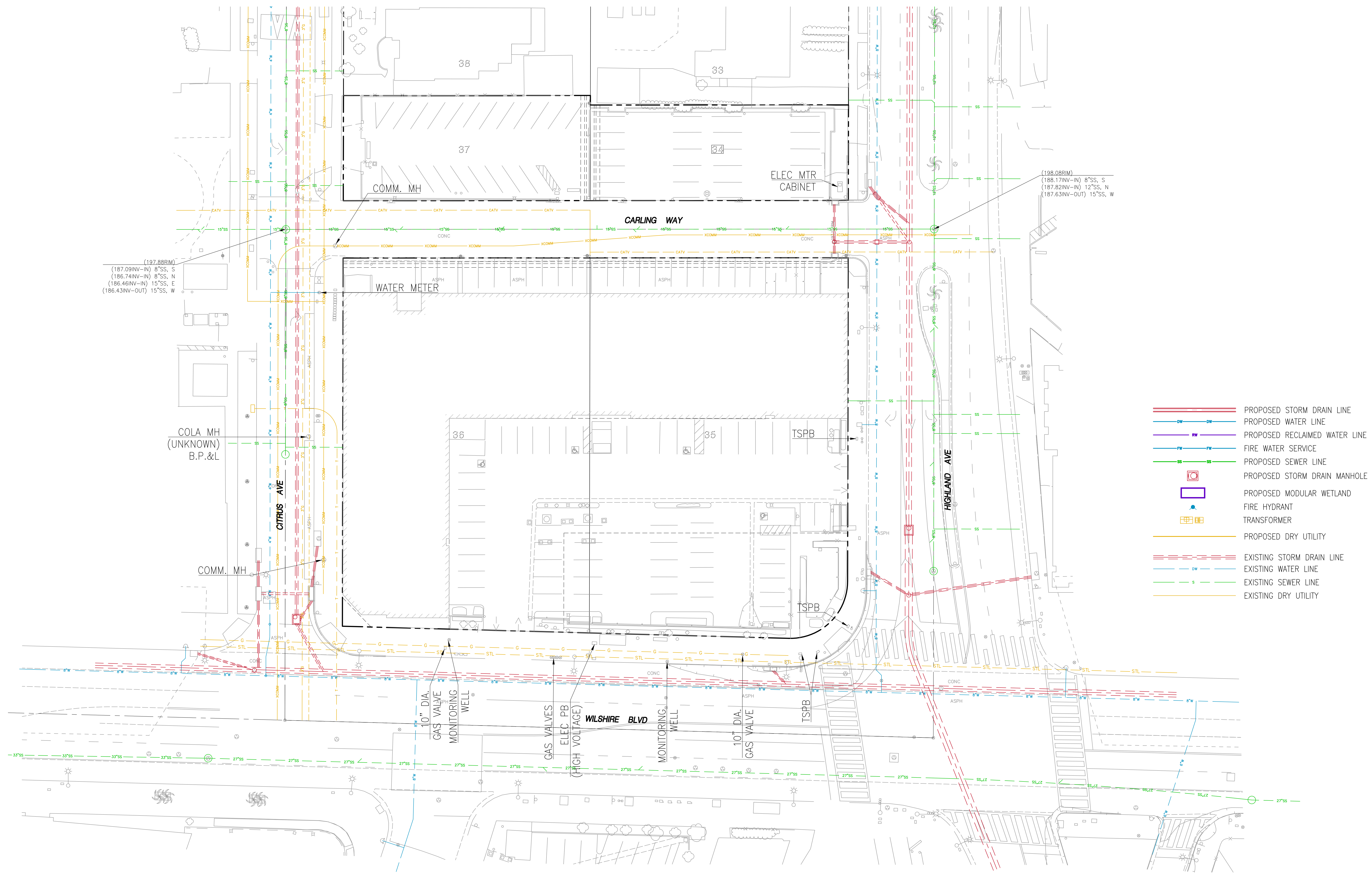


**APPENDIX I**

---

**Utilities Composite**



(197.88RIM)  
 (187.09INV-IN) 8"SS, S  
 (186.74INV-IN) 8"SS, N  
 (186.46INV-IN) 15"SS, E  
 (186.43INV-OUT) 15"SS, W

(188.08RIM)  
 (188.17INV-IN) 8"SS, S  
 (187.82INV-IN) 12"SS, N  
 (187.63INV-OUT) 15"SS, W

- PROPOSED STORM DRAIN LINE
- PROPOSED WATER LINE
- PROPOSED RECLAIMED WATER LINE
- FIRE WATER SERVICE
- PROPOSED SEWER LINE
- PROPOSED STORM DRAIN MANHOLE
- PROPOSED MODULAR WETLAND
- FIRE HYDRANT
- TRANSFORMER
- PROPOSED DRY UTILITY
- EXISTING STORM DRAIN LINE
- EXISTING WATER LINE
- EXISTING SEWER LINE
- EXISTING DRY UTILITY

# COMPOSITE UTILITY EXHIBIT

## WILSHIRE / HIGHLAND

JANUARY 6, 2021

