

Notice of Exemption

Appendix E

To: Office of Planning and Research
P.O. Box 3044, Room 113
Sacramento, CA 95812-3044
County Clerk
County of: Riverside
2724 Gateway Drive
Riverside, CA 92507

From: (Public Agency): City of La Quinta
78495 Calle Tampico
La Quinta, CA 92253
(Address)

Project Title: Talus Electric Utility Extension

Project Applicant: Robert Green Company

Project Location - Specific:

Extensions to occur within the rights-of-way of Avenue 52, Jefferson Street and SilverRock Way.

Project Location - City: La Quinta Project Location - County: Riverside

Description of Nature, Purpose and Beneficiaries of Project:

The project will install of 22,7785± linear feet of conduit as well as switch pads & equipment vaults in existing roadways from an existing substation on Avenue 52, westerly on Avenue 52 to SilverRock Way, and southerly to the Coachella Canal (Avenue 53 extended) and to SilverRock Way (see attached desc. & plans).

Name of Public Agency Approving Project: City of La Quinta

Name of Person or Agency Carrying Out Project: Robert Green Company

Exempt Status: (check one):

- Ministerial (Sec. 21080(b)(1); 15268);
Declared Emergency (Sec. 21080(b)(3); 15269(a));
Emergency Project (Sec. 21080(b)(4); 15269(b)(c));
[X] Categorical Exemption. State type and section number: Class I 15301 (Existing Facilities) & Class 3, 15303 (New Construction)
Statutory Exemptions. State code number:

Reasons why project is exempt:

The project occurs in existing streets, and involves the installation of conduit to extend power lines and associated equipment underground within streets already existing and disturbed by previous development. The equipment vaults will be installed in existing rights of way that are fully improved.

Lead Agency Contact Person: Nicole Sauviat Criste Area Code/Telephone/Extension: 760-341-4800

If filed by applicant:

- 1. Attach certified document of exemption finding.
2. Has a Notice of Exemption been filed by the public agency approving the project? [ ] Yes [X] No

Signature: Nicole Sauviat Criste Date: 3/28/22 Title: Consulting Planner

[X] Signed by Lead Agency [ ] Signed by Applicant

Authority cited: Sections 21083 and 21110, Public Resources Code.
Reference: Sections 21108, 21152, and 21152.1, Public Resources Code.

Date Received for filing at OPR:

## Talus Resort & Residences

### Imperial Irrigation District (IID) Conduit and Infrastructure Narrative Work Description

**Avenue 52, Jefferson Street, SilverRock Way; La Quinta, CA 92253**

**Service Notification: 4024055; Service Order: 60109947**

**Disclaimer:** All conduit lengths and equipment locations are approximations based on the finalized conduit layout from IID dated 10/01/2020. All utilities to be installed in existing public utility easements and/or new public utility easements following installation.

#### Summary

To provide electrical service to the Talus project, the Imperial irrigation District requires improvements be made to the existing electrical distribution system serving the area; this includes the extension of new underground circuits from an existing IID substation on Avenue 52 and Jefferson Street in La Quinta. IID will also make improvements to the Jefferson Substation which involves substation transformer switching relay adjustments within the substation. IID is to install the new underground distribution circuits to run west from Avenue 52 toward Jefferson Street for approximately 1,300' and extend south on Avenue 52 along the western side of Jefferson Street for approximately 2,450'. At Jefferson Street and the CVWD canal distribution extends underground and circuits west towards SilverRock Way for approximately 1,320'. At Jefferson Street and SilverRock distribution extends underground and circuits run west toward Avenue 52 for approximately 7,110'. At the intersection SilverRock Way and Ahmanson Lane, distribution extends underground and circuits south on the eastern side of Ahmanson Lane for approximately 1,515'.

#### Avenue 52 to SilverRock Way

East of the intersection of SilverRock Way and Avenue 52, a large switch pad [UN1200605S] is to be located on the south side of Avenue 52. **670' of 6 – 6" conduit** runs westward down Avenue 52 and then south along SilverRock Way to the next switch pad [UN1240793S] beside the SilverRock entry monument.

#### SilverRock Way to Jefferson

The next **730' of 6 – 6" conduit** down the east side of SilverRock Way culminates at a switch pad [UN1240794S]. UN1240794S connects to a medium vault equipment enclosure [UN1241642H] with **40' of 2 – 5" conduit** along SilverRock Way; there is **10' of 1 – 4" conduit** stubbed out at the equipment enclosure for future development. UN1240794S also connects to another switch pad [UN1240795S] along SilverRock Way with **475' of 6 – 6" conduit**. UN1240795S connects to two other large switch pads—one adjacent to Ahmanson Lane and another that continues beside and ultimately crosses the street to run on the south side of SilverRock Way. The next switch pad [UN1240796S] adjacent SilverRock Way (now south of the street and in a future parkway) is connected with **470' of 6 – 6" conduit**. There is one stubout this segment—a **210' length of 2 – 6" conduit** along with a **210' length of 2 – 5" conduit**; the stubout is to serve future development. UN1240796S has 90' of 3 – 6" conduit that stubs out and transverses SilverRock Way (culminates north of SilverRock Way) for future development. It connects to the next switch pad [UN1240797S] with **465' of 6 – 6" conduit**. There is one stubout in this segment— a **190' length of 2 – 6" conduit** along with a **190' length of 2 – 5" conduit**; the stubout is to serve the Conference Center. UN1240797S connects to the next switch pad [UN1240798S] on SilverRock Way with **570' of 6 – 6" conduit**. There is one stubout in this segment— a **250' length of 2 – 6" conduit** along with a **250' length of 2 – 5" conduit**; the stubout is to serve the Lifestyle Hotel. UN1240798S connects to the next equipment enclosure [UN1241643H] with **775' of 6 – 6" conduit**. Three stubouts stem from UN1240798S: a **20' length of 2 – 6" conduit** for future development, a **205' length of 2 – 6" conduit** along with a **205' length of 2 – 5" conduit** to serve the Golf Clubhouse and additional Lifestyle Residential Bungalows, and a **90' length of 3 – 6" conduit** that transverses SilverRock Way (culminates north of SilverRock Way) for future development. One stubout stems from UN1241643H: a **10' length of 1 – 4" conduit** for future development. **40' of 2 – 5" conduit** connects the equipment enclosure to the next switch pad [UN1240799S]. Following the conduit adjacent to SilverRock Way, **500' of 6 – 6" conduit** connects UN1240799S to the next switch pad [UN1240800S]. **270' of 2 – 6" conduit** is stubbed out here along with **20' of 2 – 5" conduit** for

future development. Additionally, **40' of 2 – 5" conduit** connects the switch pad to an equipment enclosure [UN1241644H]. There are two stubouts from the equipment enclosure: **10' of 1 – 4" conduit** for future development and **210' of 2 – 5" conduit** along with **270' of 2 – 6" conduit** to serve the Lifestyle Residences. UN1240800S also connects to the next switch pad [UN1240801S] with **625' of 6 – 6" conduit**. UN1240801S has two stubouts: **90' of 3 – 6" conduit** transverse SilverRock Way (culminates north of SilverRock Way) and **20' of 3 – 6" conduit** follows along the line the switch pads (south of SilverRock Way); both stubouts are to serve future development. **515' of 6 – 6" conduit** connects UN1240801S to the next switch pad [UN1240802S]. UN1240802S also has two stubouts: **90' of 3 – 6" conduit** cross SilverRock Way (culminates north of SilverRock Way) and **20' of 3 – 6" conduit** follows along the line the switch pads (south of SilverRock Way); both stubouts are to serve future development. UN1240802S connects to the next switch pad [UN1240803S] with **625' of 6 – 6" conduit**. There are two stubouts from the switch pad: **90' of 3 – 6" conduit** which transverse SilverRock Way (culminates north of SilverRock Way) and **245' of 2 – 5" conduit** along with **245' of 2 – 6" conduit**; both stubouts are to serve future development. UN1240803S connects two other switch pads—both along Jefferson Street.

#### **Jefferson Street to Avenue 52 (Jefferson Substation) and back down Jefferson Street**

The first [UN1059205V] is located on the east side of Jefferson Street and is connected with **980' of 4 – 6" conduit**. The other [UN1241492V] is west of Jefferson Street and is connected with **710' of 6 – 6" conduit**. **245' of 6 – 6" conduit** stubout from this switch pad toward and across SilverRock Way. Travelling north along the west side of Jefferson, **810' of 6 – 6" conduit** are used to connect to the next switch pad [UN1241491V]. Two conduit lines continue north—one turns west to run adjacent to the canal and the other continues along Jefferson. Continuing along Jefferson, **530' of 6 – 6" conduit** connect to the next switch pad [UN1241730V]; there is **60' of 2 – 5"** stubbed out here for future development. UN1241730V connects to the next switch pad [UN1241442V] with **185' of 6 – 6" conduit**. **680' of 6 – 6" conduit** connect UN1241442V to the following switch pad [UN1241441V]. The line then diagonally crosses Avenue 52 to the next switch pad [UN1241440S] with **555' of 6 – 6" conduit**. Moving east along Avenue 52, **490' of 8 – 6" conduit** connect UN1241440S to the next switch pad [UN1241439S]; **200' of 6 – 6" conduit** stubout here—just east of the Jefferson Substation for future development. Moving westward along Avenue 52, the first switch pad [UN1240810S] had two stub outs: **245' of 6 – 6"** to connect to the substation and **20' of 2 – 5"** for future development. This switch pad connects to the next [UN1240809S] with **520' of 8 – 6" conduit**. UN1240809S connects to UN1241440S with **60' of 3 – 6" conduit**. UN1240809S also connects to the next switch pad [UN1240808V] diagonally across the roundabout with **555' of 6 – 6" conduit**. Moving south along Jefferson Street, UN1240808V connects to the following switch pad [UN1240807S] with **710' of 6 – 6" conduit**. UN1240807S connects to UN1241442V with **60' of 3 – 6" conduit**.

#### **Jefferson Street to Canal**

UN1240807S also connects to the next switch pad [UN1240806S] north of the canal with **425' of 6 – 6" conduit**. UN1240806S has **60' of 2 - 5"** conduit stubbed out in addition to **545' of 2 – 6" conduit** continuing its way south down Jefferson Street. UN1240806S follows the canal westward to the next switch pad [UN1240805S] with **615' of 6 – 6" conduit**. UN1240805S has **60' of 2 – 5" conduit** stubbed out for future development, and it continues along the canal to connect to the next switch pad [UN1240804S] with **705' of 6 – 6" conduit**. UN1240804S has **60' of 2 – 5" conduit** stubbed out for future development, connects north along SilverRock Way to switch pad UN1240799S with **440' of 3 – 6" conduit**, and connects south along SilverRock Way to switch pad UN1240800S **405' of 3 – 6" conduit**.

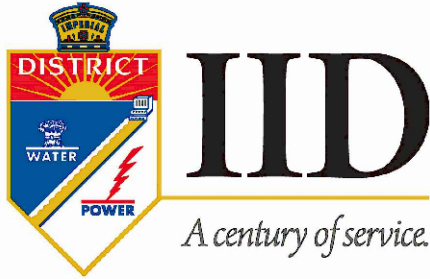
#### **Ahmanson Lane**

Backtracking to the line of connection along Ahmanson Lane: switch pad UN1240795S connects to the northernmost switch pad adjacent to Ahmanson Lane [UN1241578S] with **480' of 3 – 6" conduit**. This connects to the next switch pad [UN1241579S] with **480' of 3 – 6" conduit**. UN1241579S also has **250' of 2 – 5" conduit** stubbed out to serve Luxury Residences and it continues south to the next switch pad [UN1241580S] with **720' of 3 – 6" conduit**. UN1241580S has a stubout of **10 of 2 – 5" conduit** to serve the Luxury Hotel.

**End of Narrative**

Talus: IID Final Conduit Layout Inventory

Item	Quantity	Unit	Location	sheet no. on IID plans
8 - 6" conduit	520	LF		
6 - 6" conduit	14535	LF		
4 - 6" conduit	980	LF		
3 - 6" conduit	2970	LF		
2 - 6" conduit	1975	LF		
2 - 5" conduit	1945	LF		
1 - 4" conduit	30	LF		
large switch pad - UN1200605S	1	EA	west of Avenue 52 substation	2
large switch pad - UN1240793	1	EA	SilverRock Way (east of street); beside entry monument	2
large switch pad - UN1240794S	1	EA	SilverRock Way (east of street); before park entrance	2
medium vault equipment enclosure - UN1241642H	1	EA	SilverRock Way (east of street); before park entrance	2
large switch pad - UN1240795S	1	EA	SilverRock Way (south of street); adjacent to luxury hotel parking	2
large switch pad - UN1240796S	1	EA	SilverRock Way (south of street); to serve conference center	2
large switch pad - UN1240797S	1	EA	SilverRock Way (south of street); to serve lifestyle hotel	3
large switch pad - UN1240798S	1	EA	SilverRock Way (south of street); to serve golf clubhouse and lifestyle bungalows	3
medium vault equipment enclosure - UN1241643H	1	EA	SilverRock Way (south of street); adjacent to lifestyle hotel	3
large switch pad - UN1240799S	1	EA	SilverRock Way (south of street); adjacent to lifestyle bungalows	3
large switch pad - UN1240800S	1	EA	SilverRock Way (west of street); adjacent to lifestyle residences	3
medium vault equipment enclosure - UN1241644H	1	EA	SilverRock Way (west of street); to serve lifestyle residences	3
large switch pad - UN1240801S	1	EA	SilverRock Way (west of street); adjacent to lifestyle residences	4
large switch pad - UN1240802S	1	EA	SilverRock Way (south of street)	4
large switch pad - UN1240803S	1	EA	SilverRock Way (south of street)	4
large switch pad - UN1059205V	1	EA	Jefferson Street (east of street)	4
large switch pad - UN1241492V	1	EA	Jefferson Street (west of street)	4
large switch pad - UN1241491V	1	EA	Jefferson Street (west of street)	4
large switch pad - UN1241730V	1	EA	Jefferson Street (west of street)	5
large switch pad - UN1241442V	1	EA	Jefferson Street (west of street)	5
large switch pad - UN1241441V	1	EA	Jefferson Street (west of street)	5
large switch pad - UN1241440S	1	EA	Avenue 52 (north of street); near NE corner of Jefferson / Avenue 52 intersection	5
large switch pad - UN1241439S	1	EA	Avenue 52 (north of street); west of Jefferson substation	5
large switch pad - UN1240810S	1	EA	Avenue 52 (north of street); west of Jefferson substation	5
large switch pad - UN1240809S	1	EA	Avenue 52 (north of street); near NE corner of Jefferson / Avenue 52 intersection	5
large switch pad - UN1240808V	1	EA	Jefferson Street (west of street)	5
large switch pad - UN1240807S	1	EA	Jefferson Street (west of street)	5
large switch pad - UN1240806S	1	EA	Jefferson Street (west of street); north of canal	5
large switch pad - UN1240805S	1	EA	north of canal	5
large switch pad - UN1240804S	1	EA	SilverRock Way (east of street); north of canal	3
large switch pad - UN1241578S	1	EA	Ahmanson Lane (north of street); adjacent to luxury hotel parking	2
large switch pad - UN1241579S	1	EA	Ahmanson Lane (east of street); to serve luxury residences	6
large switch pad - UN1241580S	1	EA	Ahmanson Lane (east of street); to serve luxury hotel	6



- CUSTOMER
- DISTRIBUTION SUPERVISOR
- DISTRIBUTION
- PROJECT MANAGER
- INSPECTOR
- \_\_\_\_\_
- \_\_\_\_\_
- \_\_\_\_\_

**PROJECT SITE**



**LA QUINTA  
LOCATION MAP**

NOT TO SCALE



## CONTRACTOR NOTES

THIS WORK REQUIRES IID UNDERGROUND INSPECTION.  
 FOR THE UNDERGROUND INSPECTION PROCESS, SEE  
 DETAIL PAGES 7 THRU 11 FROM THE DEVELOPER  
 ENERGY PLANNING GUIDE. ALL EQUIPMENT OR MATERIAL  
 INSTALLED, COVERED, OR ENCLOSED BY THE  
 CONTRACTOR PRIOR TO IID INSPECTION SHALL BE  
 REMOVED OR UNCOVERED FOR INSPECTION, AND  
 REINSTALLED, AT NO EXPENSE TO IID. IID WILL NOT  
 ACCEPT OR ENERGIZE FACILITIES THAT FAIL TO MEET  
 THE REQUIREMENTS OUTLINED IN THE PROCESS.

### DETAIL PAGES

DETAIL PAGES REFER TO THE DEVELOPER ENERGY  
 PLANNING GUIDE (D.E.P.G.) REV. 4.8 2018,  
 IT CAN BE OBTAINED ON THE IID WEBSITE  
[WWW.IID.COM/ENERGY/NEW-CONSTRUCTION](http://WWW.IID.COM/ENERGY/NEW-CONSTRUCTION)



### CAUTION: ENERGIZED STRUCTURES & CABLE

DO NOT PERFORM ANY TYPE OF WORK ON OR AROUND  
 ENERGIZED STRUCTURES. A QUALIFIED IID ELECTRICAL  
 WORKER MUST BE PRESENT AT JOB SITE BEFORE ANY  
 CONDUIT OR ANY TYPE OF WORK IS PERFORMED.  
 PLEASE CONTACT IID INSPECTION DESK AT  
 LA QUINTA @:(760) 398-5828 ; IMPERIAL @:(760) 482-3300.  
 INSPECTION SCHEDULES ARE SUBJECT TO A MINIMUM  
 48 HOUR ADVANCE NOTICE AND ARE BY APPOINTMENT  
 ONLY.

PROJECT NOTES:  
 79179 AHMANSON LN  
 LA QUINTA, CA 92253

CUSTOMER CONTACT: JOHN GAMLIN  
 PHONE NUMBER: 760-238-2443

PROJECT MANAGER: TRAVIS MASTON  
 DISTRIBUTION ESTIMATOR: STEVEN SALADO

SERVICE NOTIFICATION: 60109947  
 SERVICE ORDER: 4024055

SHEET 1 OF 5

### UNDERGROUND SERVICE ALERT

1-800-422-4133  
 CALL USA/SC

FOR UNDERGROUND LOCATING  
 2 WORKING DAYS BEFORE YOU DIG



IMPERIAL IRRIGATION DISTRICT  
 IMPERIAL, CA  
 IMPERIAL VALLEY ENERGY PROJECT

U.G. DISTRIBUTION  
 SILVERROCK DEVELOPMENT  
 LA QUINTA

FILE NAME: 4024055

REV.#	PG#	DATE	BY	DESCRIPTION

APPROVED: JLG	DATE: 10/1/2020
CHECKED BY:	
DESIGN'D: SRS	DATE: 9/30/2020





- CONDUIT NOTES:**
- ▲ INSTALL 1-4" CND SCH 40 PVC PER SHOWN LENGTH. (REFER TO SHEETS 10-11,104-105, 107-110, 112-115 OF THE D.E.P.G. REV. 4.8 2018)
  - ▲ INSTALL 2-5" CND SCH 40 PVC PER SHOWN LENGTH. (REFER TO SHEETS 10-11,104-105, 107-110, 112-115 OF THE D.E.P.G. REV. 4.8 2018)
  - ▲ INSTALL 2-5" CND SCH 40 PVC PER SHOWN LENGTH. (REFER TO SHEETS 10-11,104-105, 107-110, 112-115 OF THE D.E.P.G. REV. 4.8 2018)
  - ▲ INSTALL 6-6" CND SCH 40 PVC PER SHOWN LENGTH. (REFER TO SHEETS 10-11,104-105, 107-110, 112-115 OF THE D.E.P.G. REV. 4.8 2018)
  - ▲ INSTALL 2-6" CND SCH 40 PVC PER SHOWN LENGTH. (REFER TO SHEETS 10-11,104-105, 107-110, 112-115 OF THE D.E.P.G. REV. 4.8 2018)
  - ▲ INSTALL 2-6" CND SCH 40 PVC PER SHOWN LENGTH. (REFER TO SHEETS 10-11,104-105, 107-110, 112-115 OF THE D.E.P.G. REV. 4.8 2018)
  - ▲ INSTALL 6-6" CND SCH 40 PVC PER SHOWN LENGTH. (REFER TO SHEETS 10-11,104-105, 107-110, 112-115 OF THE D.E.P.G. REV. 4.8 2018)

CURVE DATA TABLE		
#	RADIUS	LENGTH
(R1)	25.0'	90° 39.26'
(R2)	25.0'	45° 19.63'

- TRENCH DETAILS**
- E 5-8 PRI DUCT CONC. ENCASED REFER TO SHEETS 108 & 115 OF THE D.E.P.G. REV. 4.8 2018
  - F 10-12 PRI DUCT CONC. ENCASED REFER TO SHEETS 108 & 115 OF THE D.E.P.G. REV. 4.8 2018
  - G COMPACTION BACK FILL MULTI PRI DUCT REFER TO SHEETS 108 & 115 OF THE D.E.P.G. REV. 4.8 2018

**TRENCHING NOTES:**  
 TYPICAL CONTRACTOR SHALL INSTALL 2" LINE GUARD TAPE (RED)  
 "CAUTION: BURIED ELECTRICAL LINE BELOW."  
 (REFER TO SHEET 115 OF THE D.E.P.G. REV. 4.8 2018)

- STRUCTURE DETAILS:**
- ▴ STUB OUT MARKER DETAIL REFER TO SHEETS 117 & 118 OF THE D.E.P.G. REV. 4.8 2018
  - ▣ LARGE SWITCH PAD REFER TO SHEETS 179-180, 206-207 OF THE D.E.P.G. REV. 4.8 2018
  - ▢ SUBSTRUCTURE MEDIUM VAULT EQUIPMENT ENCLOSURE REFER TO SHEETS 171-172 OF THE D.E.P.G. REV. 4.8 2018

**PRIVATE ELECTRICAL SYSTEM NOTES:**

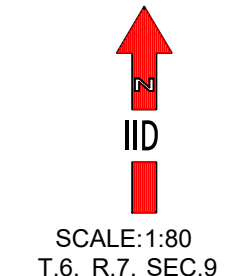
— E — HIGH VOLTAGE PRIVATE ELECTRICAL SYSTEM. NOT UNDER IID CONTROL.

Please be advised that the Private Primary and Secondary Electrical System is noted on this plan per location provided by the Customer/Developer. It is owned and maintained by the City of La Quinta who has requested that the system remain in place, which is metered at the SilverRock Way entrance from the south side of Ave 52. The system will be appropriately labeled as a private system and energization of the IID system within the SilverRock project will not occur until such labeling is complete to IID's satisfaction.

Also be advised that IID does not have detailed maps or locations of any of the subsurface structures of the private system. The Customer/Developer is responsible to verify exact locations of the private system prior to any subsurface work.

Also be advised that any excavation in regards to the existing private system, the IID conduit system or the eventual cabled and energized IID system will be accomplished within the Dig Alert guidelines and with IID oversight. This is especially critical in areas where both systems exist in close proximity to each other.

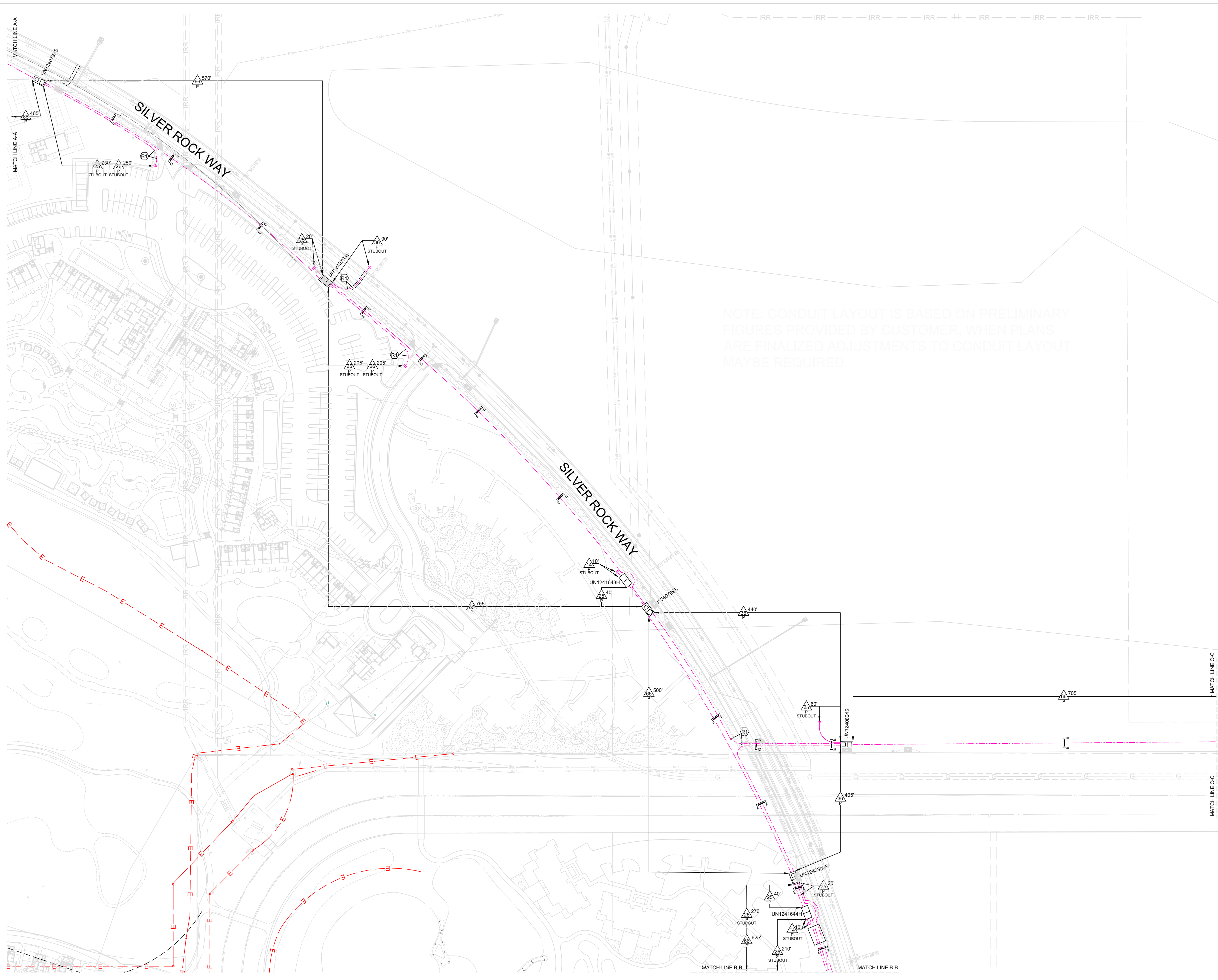
JLG 10/1/2020



SCALE: 1:80  
 T.6, R.7, SEC.9

SILVERROCK DEV. CO. LLC  
 CONDUIT LAYOUT





- CONDUIT NOTES:**
- ▲ INSTALL 1-4" CND SCH 40 PVC PER SHOWN LENGTH. (REFER TO SHEETS 10-11,104-105, 107-110, 112-115 OF THE D.E.P.G. REV. 4.8 2018) STUBOUT
  - ▲ INSTALL 2-5" CND SCH 40 PVC PER SHOWN LENGTH. (REFER TO SHEETS 10-11,104-105, 107-110, 112-115 OF THE D.E.P.G. REV. 4.8 2018) STUBOUT
  - ▲ INSTALL 3-6" CND SCH 40 PVC PER SHOWN LENGTH. (REFER TO SHEETS 10-11,104-105, 107-110, 112-115 OF THE D.E.P.G. REV. 4.8 2018) STUBOUT
  - ▲ INSTALL 2-5" CND SCH 40 PVC PER SHOWN LENGTH. (REFER TO SHEETS 10-11,104-105, 107-110, 112-115 OF THE D.E.P.G. REV. 4.8 2018) STUBOUT
  - ▲ INSTALL 6-6" CND SCH 40 PVC PER SHOWN LENGTH. (REFER TO SHEETS 10-11,104-105, 107-110, 112-115 OF THE D.E.P.G. REV. 4.8 2018) STUBOUT
  - ▲ INSTALL 2-6" CND SCH 40 PVC PER SHOWN LENGTH. (REFER TO SHEETS 10-11,104-105, 107-110, 112-115 OF THE D.E.P.G. REV. 4.8 2018) STUBOUT
  - ▲ INSTALL 3-6" CND SCH 40 PVC PER SHOWN LENGTH. (REFER TO SHEETS 10-11,104-105, 107-110, 112-115 OF THE D.E.P.G. REV. 4.8 2018) STUBOUT
  - ▲ INSTALL 6-6" CND SCH 40 PVC PER SHOWN LENGTH. (REFER TO SHEETS 10-11,104-105, 107-110, 112-115 OF THE D.E.P.G. REV. 4.8 2018) STUBOUT

CURVE DATA TABLE		
#	RADIUS	LENGTH
41	25.0'	38.26'
42	25.0'	19.63'

- TRENCH DETAILS:**
- E 5-9 PRI. DUCT CONC. ENCASED REFER TO SHEETS 109 & 115 OF THE D.E.P.G. REV. 4.8 2018
  - F 10-12 PRI. DUCT CONC. ENCASED REFER TO SHEETS 109 & 115 OF THE D.E.P.G. REV. 4.8 2018
  - G COMPACTION BACK FILL MULTI PRI. DUCT REFER TO SHEETS 109 & 115 OF THE D.E.P.G. REV. 4.8 2018

- TRENCHING NOTES:**
- TYPICAL CONTRACTOR SHALL INSTALL 2" LINE GUARD TAPE (RED)
  - "CAUTION: BURIED ELECTRIC LINE BELOW."
  - (REFER TO SHEET 115 OF THE D.E.P.G. REV. 4.8 2018)

- STRUCTURE DETAILS:**
- ↑ STUB OUT MARKER DETAIL REFER TO SHEETS 117 & 118 OF THE D.E.P.G. REV. 4.8 2018
  - LARGE SWITCH PAD REFER TO SHEETS 179-180, 206-207 OF THE D.E.P.G. REV. 4.8 2018
  - SUBSTRUCTURE MEDIUM VAULT EQUIPMENT ENCLOSURE REFER TO SHEETS 171-172 OF THE D.E.P.G. REV. 4.8 2018

**PRIVATE ELECTRICAL SYSTEM NOTES:**

— E — HIGH VOLTAGE PRIVATE ELECTRICAL SYSTEM. NOT UNDER IID CONTROL.

Please be advised that the Private Primary and Secondary Electrical System is noted on this plan per location provided by the Customer/Developer. It is owned and maintained by the City of La Quinta who has requested that the system remain in place, which is metered at the SilverRock Way entrance on the south side of Ave 52. The system will be appropriately labeled as a private system and energization of the IID system within the SilverRock project will not occur until such labeling is complete to IID's satisfaction.

Also be advised that IID does not have detailed maps or locations of any of the subsurface structures of the private system. The Customer/Developer is responsible to verify exact locations of the private system prior to any subsurface work.

Also be advised that any excavation in regards to the existing private system, the IID conduit system or the eventual cabled and energized IID system will be accomplished within the Dig Alert guidelines and with IID oversight. This is especially critical in areas where both systems exist in close proximity to each other.

JLG 10/1/2020

SCALE: 1:100  
T.6, R.7, SEC.9

SILVERROCK DEV. CO. LLC  
CONDUIT LAYOUT



- CONDUIT NOTES:**
- ▲ INSTALL 2-5" CND SCH.40 PVC PER SHOWN LENGTH.  
(REFER TO SHEETS 10-11,104-105, 107-110, 112-115 OF THE D.E.P.G. REV. 4.8 2018)
  - ▲ INSTALL 2-5" CND SCH.40 PVC PER SHOWN LENGTH.  
(REFER TO SHEETS 10-11,104-105, 107-110, 112-115 OF THE D.E.P.G. REV. 4.8 2018)
  - ▲ INSTALL 6-6" CND SCH.40 PVC PER SHOWN LENGTH.  
(REFER TO SHEETS 10-11,104-105, 107-110, 112-115 OF THE D.E.P.G. REV. 4.8 2018)
  - ▲ INSTALL 4-6" CND SCH.40 PVC PER SHOWN LENGTH.  
(REFER TO SHEETS 10-11,104-105, 107-110, 112-115 OF THE D.E.P.G. REV. 4.8 2018)
  - ▲ INSTALL 2-6" CND SCH.40 PVC PER SHOWN LENGTH.  
(REFER TO SHEETS 10-11,104-105, 107-110, 112-115 OF THE D.E.P.G. REV. 4.8 2018)
  - ▲ INSTALL 3-6" CND SCH.40 PVC PER SHOWN LENGTH.  
(REFER TO SHEETS 10-11,104-105, 107-110, 112-115 OF THE D.E.P.G. REV. 4.8 2018)

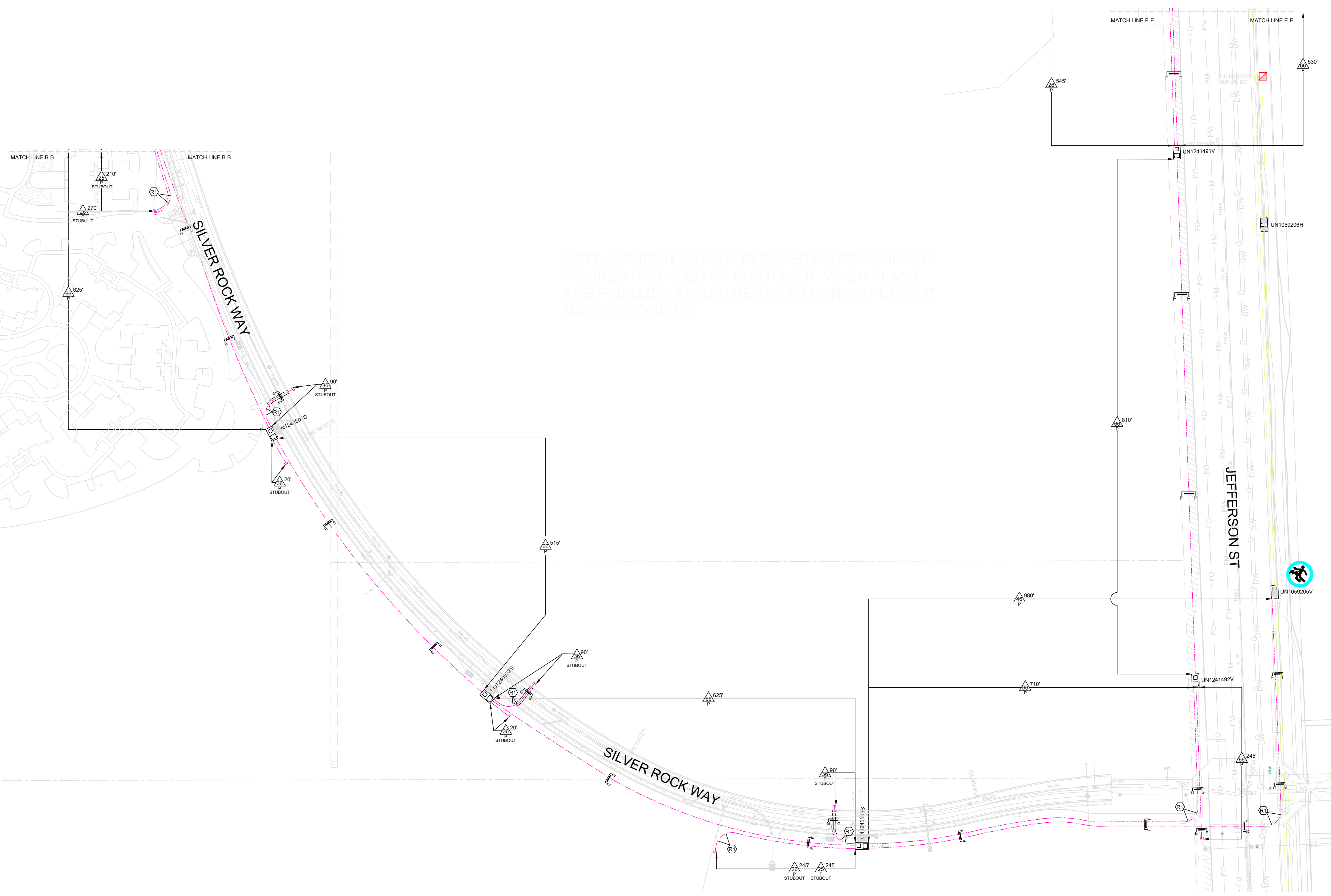
CURVE DATA TABLE		
#	RADIUS	LENGTH
(R)	25.0'	90° 39.26"

- TRENCH DETAILS**
- E 5-9 PRL DUCT CONC. ENCASED  
REFER TO SHEETS 108 & 115 OF THE D.E.P.G. REV. 4.8 2018
  - F 10-12 PRL DUCT CONC. ENCASED  
REFER TO SHEETS 108 & 115 OF THE D.E.P.G. REV. 4.8 2018
  - G COMPACTION BACK FILL MULTI PRL DUCT  
REFER TO SHEETS 108 & 115 OF THE D.E.P.G. REV. 4.8 2018

**TRENCHING NOTES:**  
TYPICAL: CONTRACTOR SHALL INSTALL  
2" LINE GUARD TAPE (RED)  
"CAUTION: BURIED ELECTRIC LINE BELOW."  
(REFER TO SHEET 115 OF THE D.E.P.G. REV. 4.8 2018)

- STRUCTURE DETAILS:**
- T STUB OUT MARKER DETAIL  
REFER TO SHEETS 117 & 118 OF THE D.E.P.G. REV. 4.8 2018
  - LARGE SWITCH PAD  
REFER TO SHEETS 179-180, 206-207 OF THE D.E.P.G. REV. 4.8 2018

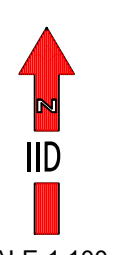
NOTE: CONDUIT LAYOUT IS BASED ON PRELIMINARY FIGURES PROVIDED BY CUSTOMER. WHEN PLANS ARE FINALIZED ADJUSTMENTS TO CONDUIT LAYOUT MAYBE REQUIRED.



JLG 10/1/2020

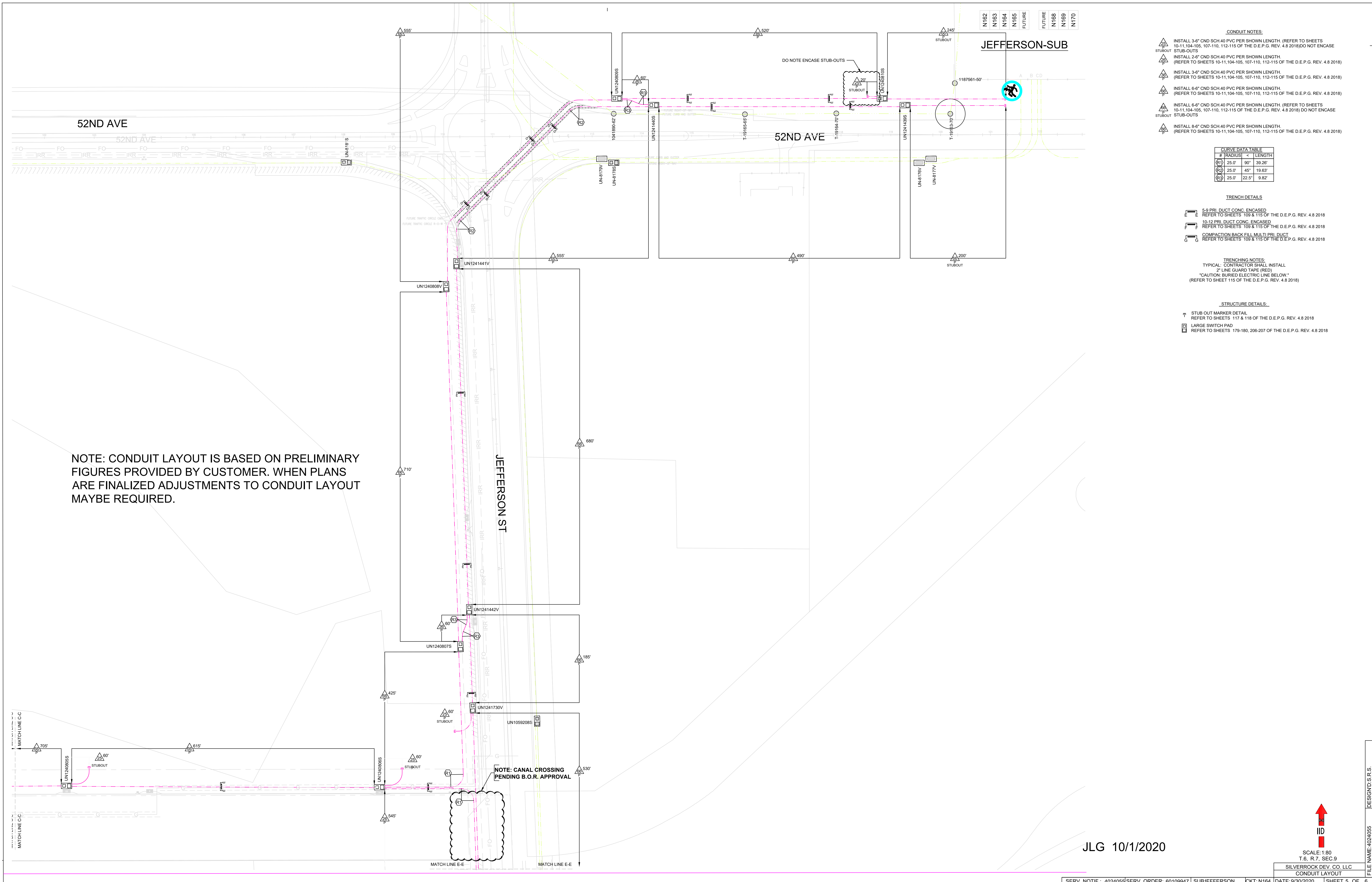
SCALE: 1:100  
T.6, R.7, SEC.9

SILVERROCK DEV. CO. LLC  
CONDUIT LAYOUT



DESIGN: S.R.S.  
FILE NAME: 4024055





NOTE: CONDUIT LAYOUT IS BASED ON PRELIMINARY FIGURES PROVIDED BY CUSTOMER. WHEN PLANS ARE FINALIZED ADJUSTMENTS TO CONDUIT LAYOUT MAYBE REQUIRED.

NOTE: CANAL CROSSING PENDING B.O.R. APPROVAL

N162  
N163  
N164  
N165  
FUTURE  
FUTURE  
N168  
N169  
N170

- CONDUIT NOTES:**
- ▲ INSTALL 3-6" CND SCH 40 PVC PER SHOWN LENGTH. (REFER TO SHEETS 10-11, 104-105, 107-110, 112-115 OF THE D.E.P.G. REV. 4.8 2018) DO NOT ENCASE STUB-OUTS
  - ▲ INSTALL 2-4" CND SCH 40 PVC PER SHOWN LENGTH. (REFER TO SHEETS 10-11, 104-105, 107-110, 112-115 OF THE D.E.P.G. REV. 4.8 2018)
  - ▲ INSTALL 3-6" CND SCH 40 PVC PER SHOWN LENGTH. (REFER TO SHEETS 10-11, 104-105, 107-110, 112-115 OF THE D.E.P.G. REV. 4.8 2018)
  - ▲ INSTALL 6-8" CND SCH 40 PVC PER SHOWN LENGTH. (REFER TO SHEETS 10-11, 104-105, 107-110, 112-115 OF THE D.E.P.G. REV. 4.8 2018)
  - ▲ INSTALL 6-8" CND SCH 40 PVC PER SHOWN LENGTH. (REFER TO SHEETS 10-11, 104-105, 107-110, 112-115 OF THE D.E.P.G. REV. 4.8 2018) DO NOT ENCASE STUB-OUTS
  - ▲ INSTALL 8-6" CND SCH 40 PVC PER SHOWN LENGTH. (REFER TO SHEETS 10-11, 104-105, 107-110, 112-115 OF THE D.E.P.G. REV. 4.8 2018)

**CURVE DATA TABLE**

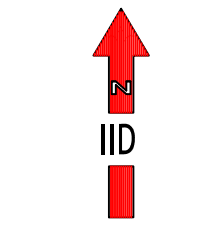
#	RADIUS	<	LENGTH
(1)	25.0'	90°	39.26'
(2)	25.0'	45°	19.63'
(3)	25.0'	22.5°	9.82'

- TRENCH DETAILS**
- E 5-9 PRL DUCT CONC. ENCASED REFER TO SHEETS 109 & 115 OF THE D.E.P.G. REV. 4.8 2018
  - F 10-12 PRL DUCT CONC. ENCASED REFER TO SHEETS 109 & 115 OF THE D.E.P.G. REV. 4.8 2018
  - G COMPACTION BACK FILL MULTI PRL DUCT REFER TO SHEETS 109 & 115 OF THE D.E.P.G. REV. 4.8 2018

**TRENCHING NOTES:**  
TYPICAL: CONTRACTOR SHALL INSTALL 2" LINE GUARD TAPE (RED)  
"CAUTION: BURIED ELECTRIC LINE BELOW"  
(REFER TO SHEET 115 OF THE D.E.P.G. REV. 4.8 2018)

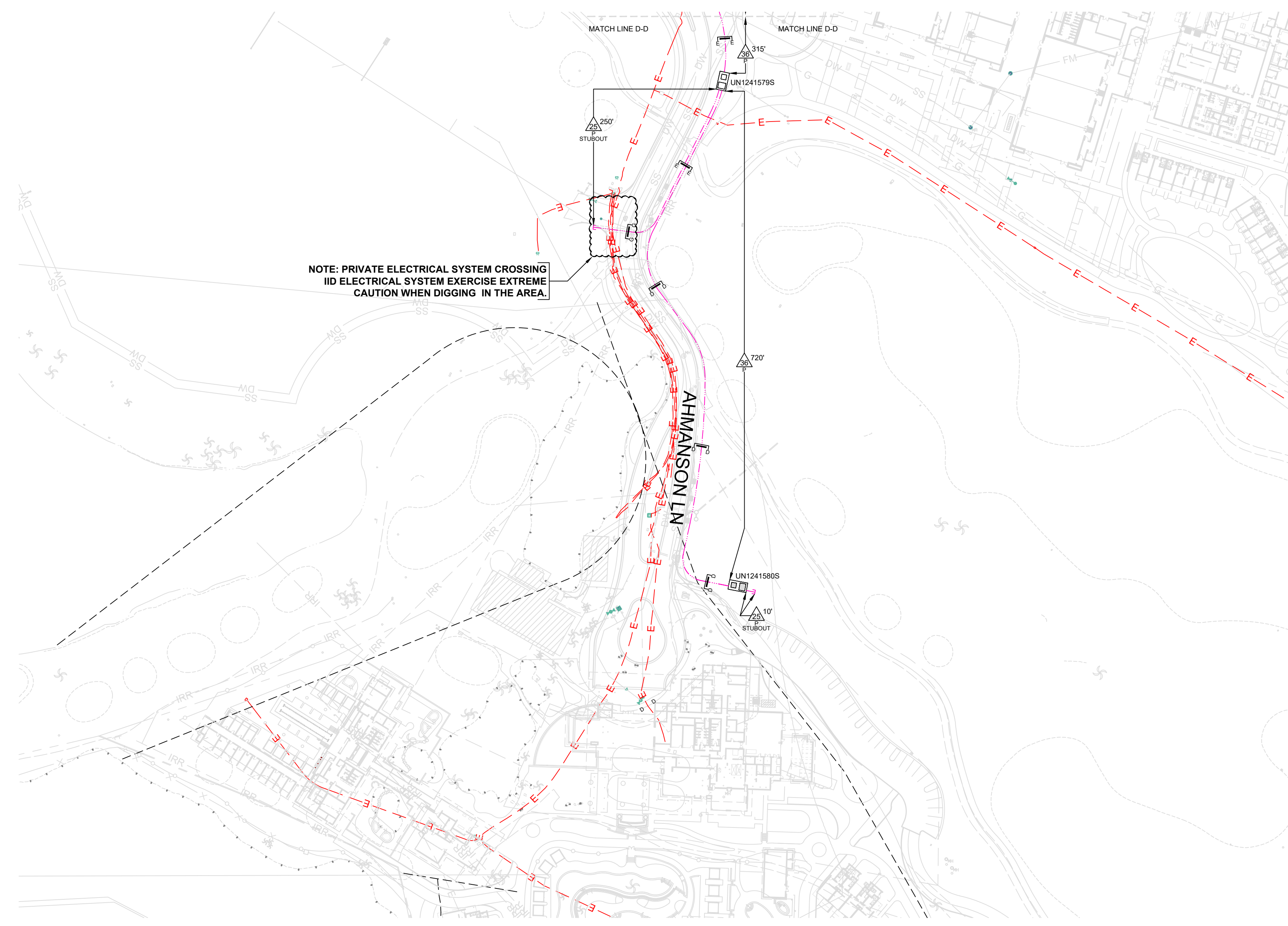
- STRUCTURE DETAILS:**
- ▬ STUB OUT MARKER DETAIL REFER TO SHEETS 117 & 118 OF THE D.E.P.G. REV. 4.8 2018
  - ▬ LARGE SWITCH PAD REFER TO SHEETS 179-180, 206-207 OF THE D.E.P.G. REV. 4.8 2018

JLG 10/1/2020



SCALE: 1:80  
T.6, R.7, SEC.9  
SILVERROCK DEV. CO. LLC  
CONDUIT LAYOUT





NOTE: PRIVATE ELECTRICAL SYSTEM CROSSING IID ELECTRICAL SYSTEM EXERCISE EXTREME CAUTION WHEN DIGGING IN THE AREA.

**CONDUIT NOTES:**  
 ▴ INSTALL 2-5" CND SCH 40 PVC PER SHOWN LENGTH. (REFER TO SHEETS 10-11,104-105, 107-110, 112-115 OF THE D.E.P.G. REV. 4.8 2018)  
 ▴ STUBOUT  
 ▴ INSTALL 3-6" CND SCH 40 PVC PER SHOWN LENGTH. (REFER TO SHEETS 10-11,104-105, 107-110, 112-115 OF THE D.E.P.G. REV. 4.8 2018)

CURVE DATA TABLE		
#	RADIUS	LENGTH
(R1)	25.0'	90° 39.26'
(R2)	25.0'	45° 19.63'

**TRENCH DETAILS**  
 D 2-4 PRI DUCT CONC. ENCASED REFER TO SHEETS 109 & 115 OF THE D.E.P.G. REV. 4.8 2018  
 E 6-9 PRI DUCT CONC. ENCASED REFER TO SHEETS 109 & 115 OF THE D.E.P.G. REV. 4.8 2018  
 G REFER TO SHEETS 109 & 115 OF THE D.E.P.G. REV. 4.8 2018

**TRENCHING NOTES:**  
 TYPICAL: CONTRACTOR SHALL INSTALL 2" LINE GUARD TAPE (RED)  
 \*CAUTION: BURIED ELECTRIC LINE BELOW.\* (REFER TO SHEET 115 OF THE D.E.P.G. REV. 4.8 2018)

**STRUCTURE DETAILS:**  
 T STUB OUT MARKER DETAIL REFER TO SHEETS 117 & 118 OF THE D.E.P.G. REV. 4.8 2018  
 S LARGE SWITCH PAD REFER TO SHEETS 179-180, 206-207 OF THE D.E.P.G. REV. 4.8 2018

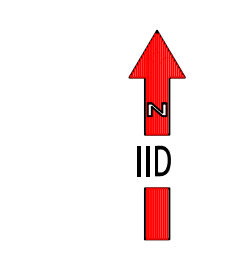
**PRIVATE ELECTRICAL SYSTEM NOTES:**  
 — E — HIGH VOLTAGE PRIVATE ELECTRICAL SYSTEM. NOT UNDER IID CONTROL.

Please be advised that the Private Primary and Secondary Electrical System is noted on this plan per location provided by the Customer/Developer. It is owned and maintained by the City of La Quinta who has requested that the system remain in place, which is metered at the SilverRock Way entrance from the south side of Ave 52. The system will be appropriately labeled as a private system and energization of the IID system within the SilverRock project will not occur until such labeling is complete to IID's satisfaction.

Also be advised that IID does not have detailed maps or locations of any of the subsurface structures of the private system. The Customer/Developer is responsible to verify exact locations of the private system prior to any subsurface work.

Also be advised that any excavation in regards to the existing private system, the IID conduit system or the eventual cabled and energized IID system will be accomplished within the Dig Alert guidelines and with IID oversight. This is especially critical in areas where both systems exist in close proximity to each other.

JLG 10/1/2020



SCALE: 1:80  
 T.6, R.7, SEC.9

SILVERROCK DEV. CO. LLC  
 CONDUIT LAYOUT