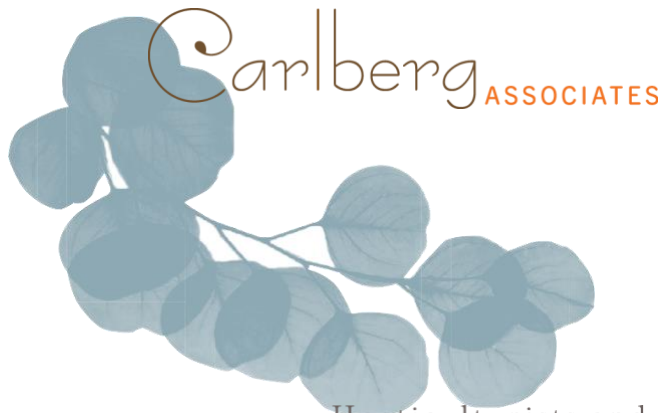


Appendix IS-3

Protected Tree Report



Horticulturists and
Registered Consulting
ARBORISTS

**CITY OF LOS ANGELES PROTECTED TREE REPORT
THE J. PAUL GETTY MUSEUM
1200 GETTY CENTER DRIVE
LOS ANGELES, CALIFORNIA 90049**

SUBMITTED TO:

**DAVID F. THOMPSON
SENIOR LAND USE PROJECT MANAGER
LATHAM & WATKINS LLP
355 SOUTH GRAND AVENUE, SUITE 100
LOS ANGELES, CALIFORNIA 90071-1560**

PREPARED BY:

**CY CARLBERG
ASCA REGISTERED CONSULTING ARBORIST #405
ISA CERTIFIED ARBORIST #WE 0575A
ISA QUALIFIED TREE RISK ASSESSOR
CAUFC CERTIFIED URBAN FORESTER #013**

Santa Monica Office
828 Fifth Street, Suite 3
Santa Monica, California 90403
Office: 310.451.4804

Sierra Madre Office
80 West Sierra Madre Boulevard, #241
Sierra Madre, California 91024
Office: 626.428.5072



MARCH 18, 2019

www.cycarlberg.com

CITY OF LOS ANGELES PROTECTED TREE REPORT
J. PAUL GETTY MUSEUM, 1200 GETTY CENTER DRIVE, LOS ANGELES

TABLE OF CONTENTS

COVER LETTER 1

TABLE 1 – TREE INVENTORY 2

EXHIBIT A – AERIAL IMAGE OF PROPOSED PARKING LOTS 3

EXHIBIT B – ACREAGE EXHIBIT 4

EXHIBIT C – TREE PHOTOGRAPHS 5

RESUME 8



March 18, 2019

David F. Thompson
Senior Land Use Project Manager
Latham & Watkins LLP
355 South Grand Avenue, Suite 100
Los Angeles, California 90071-1560

Re: J. Paul Getty Museum, Los Angeles, California – Protected Tree Report

Dear Mr. Thompson,

This report addresses our office's site visit of March 12, 2019 to the vacant sites located to the north of the Getty Museum in Los Angeles, California. Caltrans has recently deeded portions of these properties to the Getty, who is seeking public benefit and subdivision map approvals in order to develop two parking lots on the vacant and previously graded sites (see the aerial image on page 3). These lots were previously graded to facilitate staging for the I-405 expansion. Carlberg was retained to visit portions of the property proposed for development and determine if any trees considered protected by the City of Los Angeles Tree Preservation Ordinance No. 177.044 or significant set forth by the guidelines set forth by the City's Planning Department were present.

Grading for the parking lots will be minimal, will generally follow the flat grades, and will not encroach up or down existing slopes. Although there are no trees on the parking lots sites, there are seven protected trees located upslope of proposed parking lot 'A', the southernmost site. Existing concrete culvert systems on north lot 'B' as well as parking lot boundaries protect trees adjacent to this lot from injury or loss. Given the size of the site, sufficient setback areas can be provided within south lot 'A' to protect the seen identified trees in this area from damage or loss, the boundaries of which need to be developed. Carlberg is coordinating with the engineer to develop a design that sufficiently protects these from grading and construction. When this plan is complete, Carlberg will prepare a Tree Protection Plan showing the location of protective construction fencing. The following table sets forth the data for the upslope trees on lot 'A'. Photographs beginning on page 5 illustrate the parking lot locations as they pertain to the offsite trees.

Please feel welcome to contact me at our Santa Monica office if you have any immediate questions or concerns.

Respectfully submitted,

Cy Carlberg, Registered Consulting Arborist
Principal, Carlberg Associates



Santa Monica Office
828 Fifth Street, Suite 3
Santa Monica, California 90403
Office: 310.451.4804

Sierra Madre Office
80 West Sierra Madre Boulevard, #241
Sierra Madre, California 91024
Office: 626.428.5072

www.cycarlberg.com

TABLE 1 – TREE INVENTORY
TABLE 1 – INVENTORY OF PRIVATE PROPERTY TREES

Tree #	Common Name	Botanical Name	Dbh(s)* at 4.5 feet (inches)	Health Grade	Structure Grade	Protected Tree Y/N	Comments
1	Southern California black walnut	<i>Juglans californica</i> var. <i>californica</i>	~16	Very good	Very good	Yes	Tree is located ~20-25' upslope from construction.
2	Southern California black walnut	<i>Juglans californica</i> var. <i>californica</i>	~6, 8, 12, 14	Very good	Very good	Yes	Tree is located ~20-25' upslope from construction.
3	Southern California black walnut	<i>Juglans californica</i> var. <i>californica</i>	~12	Very good	Very good	Yes	Tree is located ~20-25' upslope from construction.
4	Scrub oak	<i>Quercus</i> spp.	~6, 6, 6	Very good	Very good	Yes	Tree is located ~25' upslope from construction.
5	Southern California black walnut	<i>Juglans californica</i> var. <i>californica</i>	~8, 8, 9, 10	Very good	Very good	Yes	Tree is located ~35' upslope from construction.
6	Southern California black walnut	<i>Juglans californica</i> var. <i>californica</i>	~7, 12, 16	Very good	Very good	Yes	Tree is located ~30' upslope from construction.
7	Southern California black walnut	<i>Juglans californica</i> var. <i>californica</i>	~9	Very good	Very good	Yes	Tree is located ~30' upslope from construction.

* **Dbh** – diameter at breast height. A forestry term describing a tree trunk's diameter measured at 4.5 feet above grade. Often used as a representation of tree size.



EXHIBIT A – AERIAL IMAGE THE TWO PROPOSED PARKING LOTS
(SOURCE: KPFF Engineers)



EXHIBIT B – ACERAGE EXHIBIT OF THE TWO PROPOSED PARKING LOTS
(SOURCE: KPFF Engineers)

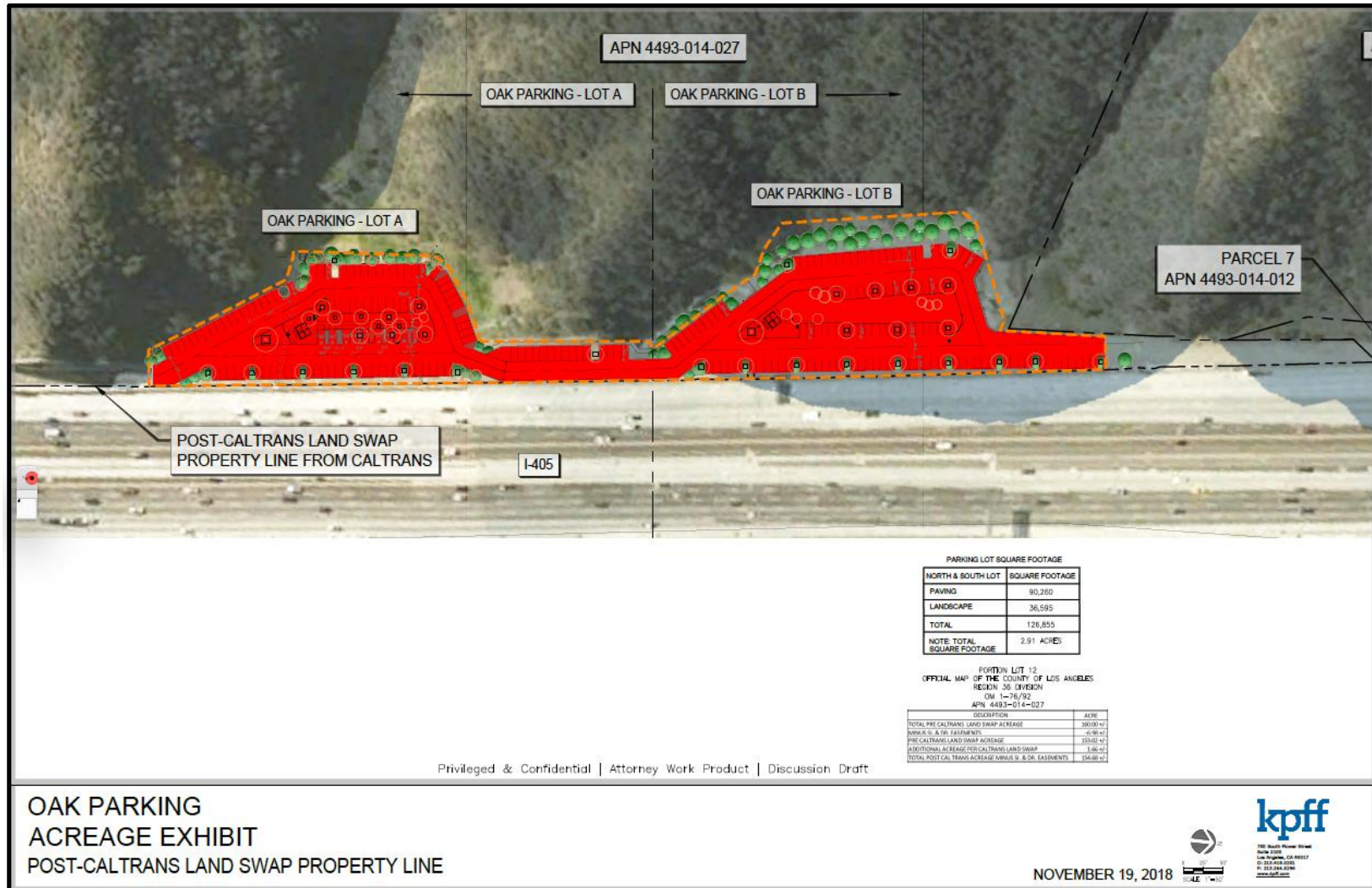
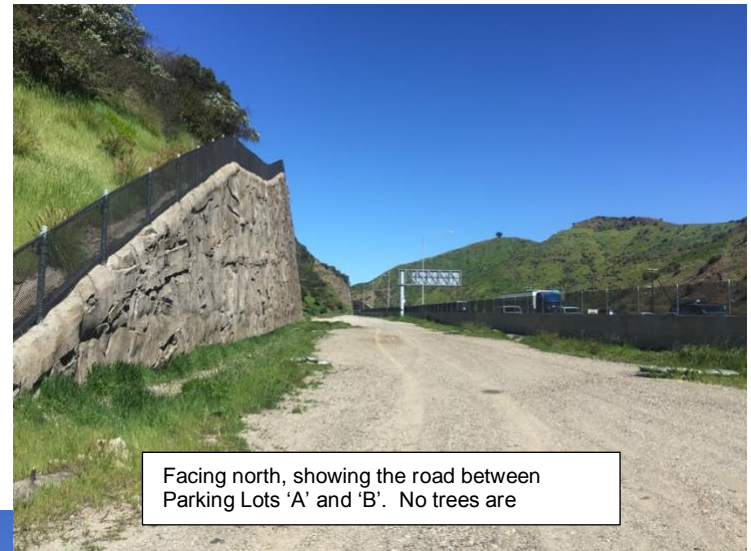


EXHIBIT C- CAPTIONED PHOTOGRAPHS



Facing north, showing the general area where Parking Lot 'A' will be developed.



Facing north, showing the road between Parking Lots 'A' and 'B'. No trees are



Facing south, showing the general area where Parking Lot 'B' will be developed.





Facing north, showing the north edge of Parking Lot 'B'. The limits of the lot he area where the parking lot will generally follow the line illustrated by the wattle (arrow).



Facing northwest. This photo illustrates that Parking Lot 'B' will not impact the trees on the slope; construction will only occur on the flat grades.

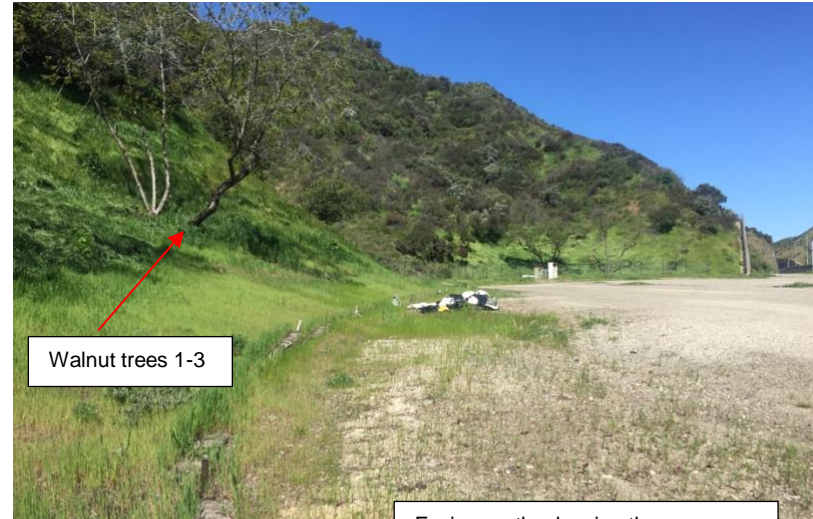




Walnut trees 1-3

Oak tree no. 4

Facing southeast from Parking Lot 'A'. Construction will remain on the flat grade and not encroach into the slope where the trees are located.



Walnut trees 1-3

Facing north, showing the area where the parking lot will be



Walnut tree 5

Walnut tree 6

Walnut tree 7

Facing north, showing the area where the parking lot will be developed.

**CY CARLBERG
CARLBERG ASSOCIATES**

828 Fifth Street, Suite 3 • Santa Monica • California • 90403
cy@cycarlberg.com • o: 310.451.4804 • www.cycarlberg.com

- Education B.S., Landscape Architecture, California State Polytechnic University, Pomona, 1985
Graduate, Arboricultural Consulting Academy, American Society of Consulting Arborists, Chicago, Illinois, February 2002
Graduate, Municipal Forestry Institute, Lied, Nebraska, 2012
- Experience Consulting Arborist, Carlberg Associates, 1998-present
Manager of Grounds Services, California Institute of Technology, Pasadena, 1992-1998
Director of Grounds, Scripps College, Claremont, 1988-1992
- Certificates Certified Arborist (#WE-0575A), International Society of Arboriculture, 1990
Registered Consulting Arborist (#405), American Society of Consulting Arborists, 2002
Certified Urban Forester (#013), California Urban Forests Council, 2004
Qualified Tree Risk Assessor, International Society of Arboriculture, 2011

AREAS OF EXPERTISE

Ms. Carlberg is experienced in the following areas of tree management and preservation:

- Tree health, pest and disease identification, and risk assessment
- Master Planning
- Historic landscape assessments, preservation plans, reports
- Tree inventories and reports to satisfy jurisdictional requirements
- Expert Testimony
- Post-fire assessment, valuation, and mitigation for trees and native plant communities
- Value assessments for native and non-native trees
- Guidelines for oak preservation
- Selection of appropriate tree species
- Planting, pruning, and maintenance specifications
- Tree and landscape resource mapping – GPS, GIS, and AutoCAD
- Planning Commission, City Council, and community meetings representation

PREVIOUS CONSULTING EXPERIENCE

Ms. Carlberg has overseen residential and commercial construction projects to prevent damage to protected and specimen trees. She has thirty-five years of experience in arboriculture and horticulture and has performed tree health evaluation, value and risk assessment, and expert testimony for private clients, government agencies, cities, school districts, and colleges. Representative clients include:

- | | |
|---|--|
| The Huntington Library and Botanical Gardens | The City of Claremont |
| The Los Angeles Zoo and Botanical Gardens | The City of Beverly Hills |
| The Rose Bowl and Brookside Golf Course, Pasadena | The City of Pasadena |
| Walt Disney Concert Hall and Gardens | The City of Los Angeles |
| The Art Center College of Design, Pasadena | The City of Santa Monica |
| Pepperdine University | Santa Monica/Malibu Unified School District |
| Loyola Marymount University | San Diego Gas & Electric |
| The Claremont Colleges (Pomona, Scripps, CMC, Harvey Mudd, | Los Angeles Department of Water and Power |
| Claremont Graduate University, Pitzer, Claremont University Center) | Rancho Santa Ana Botanic Garden, Claremont |
| Quinn, Emanuel, Urquhart and Sullivan (attorneys at law) | Latham & Watkins, LLP (attorneys at law) |
| Getty Trust – Eames House | Architectural Resources Group |
| Historic Resources Group | AHBE Landscape Architects |
| Mia Lehrer + Associates | Moule and Polyzoides, Architects and Urbanists |

AFFILIATIONS

Ms. Carlberg serves with the following national, state, and community professional organizations:

- California Urban Forests Council, Board Member, 1995-2006
- Street Tree Seminar, Past President, 2000-present
- American Society of Consulting Arborists Academy, Faculty Member, 2003-2005; 2014
- American Society of Consulting Arborists, Board of Directors, 2013-2015
- Member, Los Angeles Oak Woodland Habitat Conservation Strategic Alliance, 2010-present

