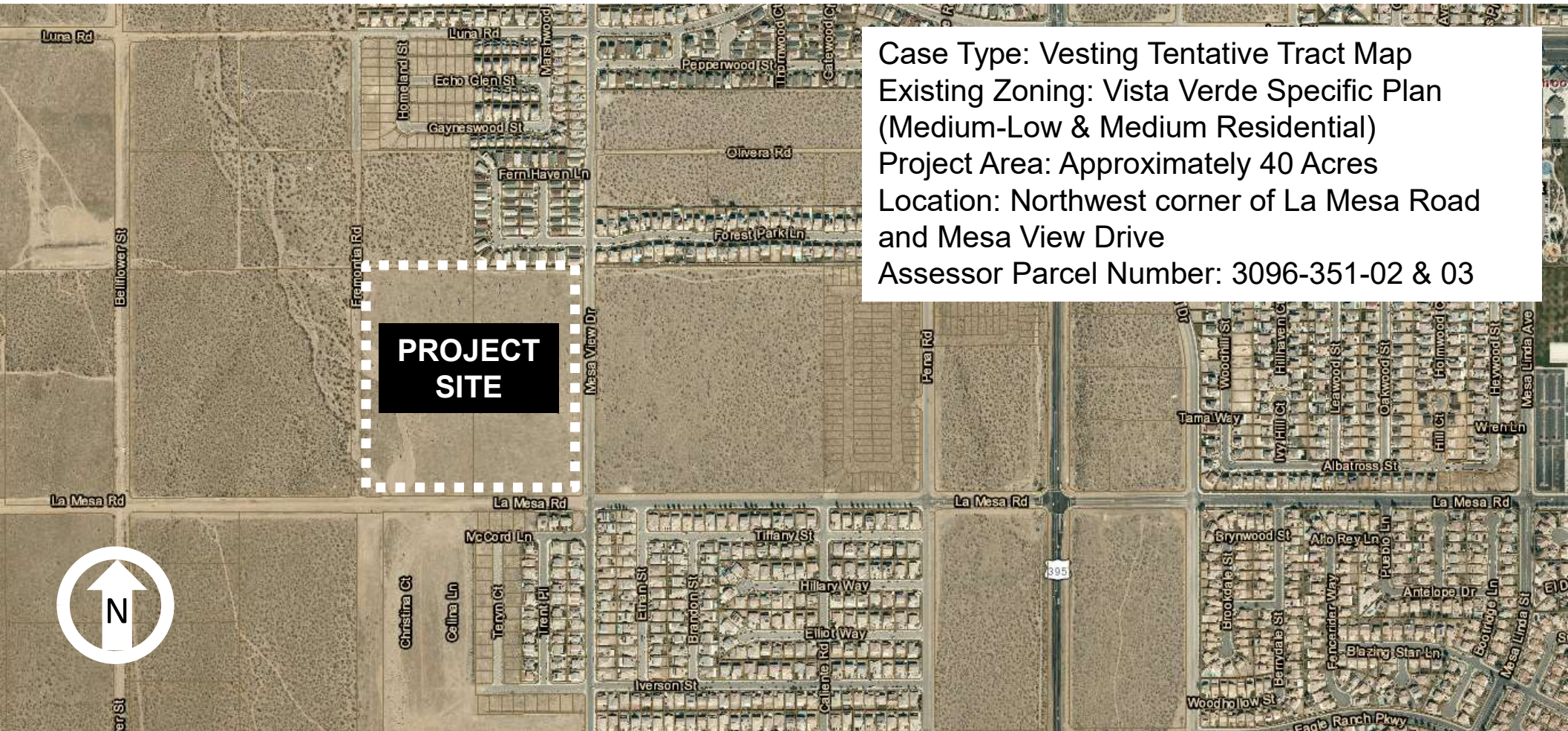


# CASE: PLAN21-00040



Case Type: Vesting Tentative Tract Map  
Existing Zoning: Vista Verde Specific Plan  
(Medium-Low & Medium Residential)  
Project Area: Approximately 40 Acres  
Location: Northwest corner of La Mesa Road  
and Mesa View Drive  
Assessor Parcel Number: 3096-351-02 & 03