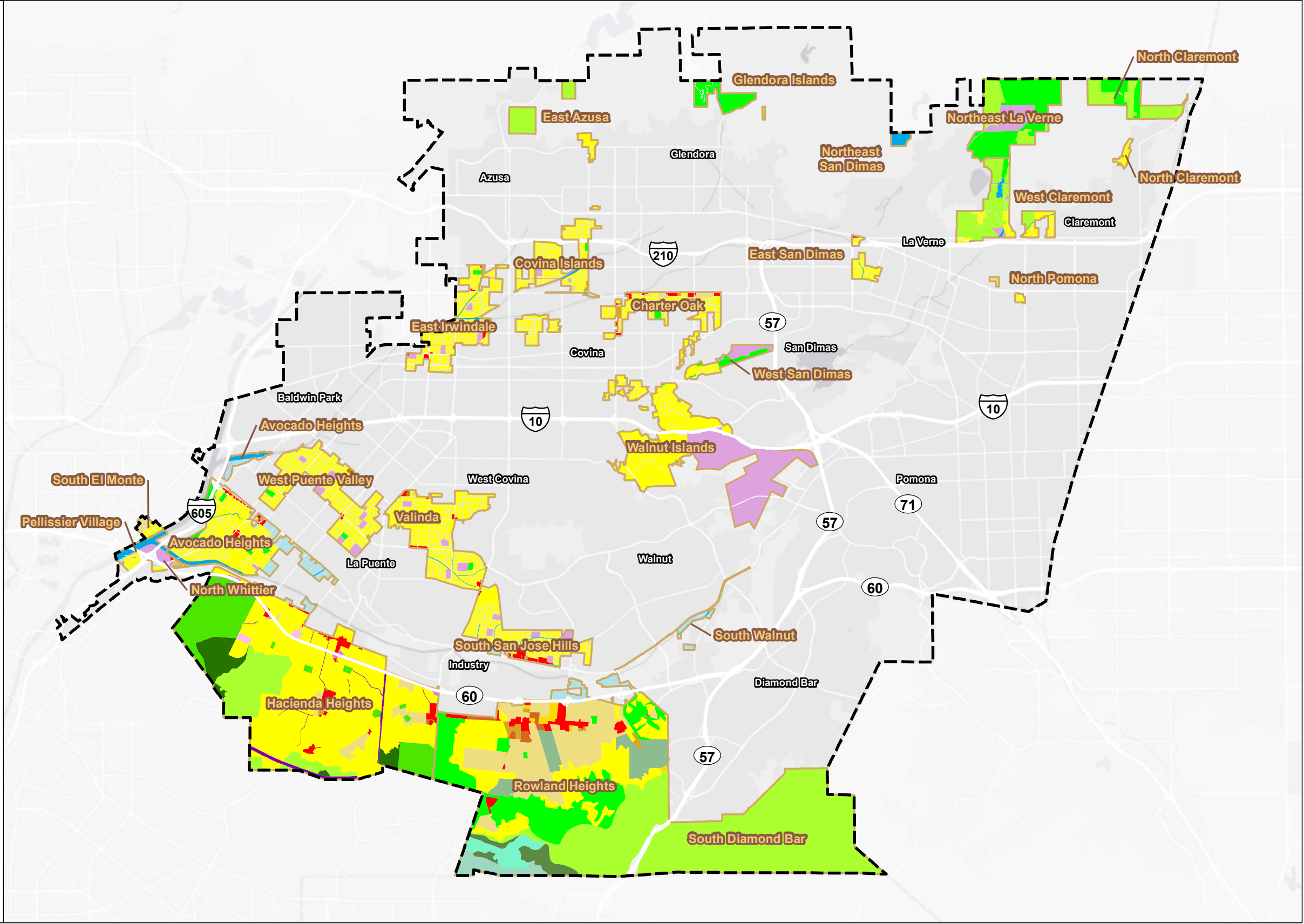


- Planning Area
- Unincorporated Area
- General Plan Land Use**
- RL1 - Rural Land 1
- RL2 - Rural Land 2
- RL10 - Rural Land 10
- RL20 - Rural Land 20
- H2 - Residential 2
- H5 - Residential 5
- H9 - Residential 9
- H18 - Residential 18
- H30 - Residential 30
- H50 - Residential 50
- CG - General Commercial
- IL - Light Industrial
- OS-C - Conservation
- OS-PR - Parks and Recreation
- P - Public and Semi-Public
- W - Water
- Rowland Heights Community Plan**
- N1 - Non-Urban 1 (0.2 du/ac)
- N2 - Non-Urban 2 (0.3 to 1.0 du/ac)
- U1 - Urban 1 (1.1 to 3.2 du/ac)
- U2 - Urban 2 (3.3 to 6.0 du/ac)
- U3 - Urban 3 (6.1 to 12.0 du/ac)
- U4 - Urban 4 (12.1 to 22.0 du/ac)
- U5 - Urban 5 (22.1 to 35.0 du/ac)
- C - Commercial
- I - Industrial
- O - Open Space
- TOS - Transitional Open Space (N1)
- TOS - Transitional Open Space (N2)
- TOS - Transitional Open Space (U1)
- Hacienda Heights Community Plan**
- RL10 - Rural Lands 10 (1du/10ac)
- RL2 - Rural Lands 2 (1du/2ac)
- H2 - Residential 2 (0-2 du/ac)
- H5 - Residential 5 (0-5 du/ac)
- H9 - Residential 9 (0-9 du/ac)
- H18 - Residential 18 (9-18 du/ac)
- H30 - Residential 30 (18-30 du/ac)
- H50 - Residential 50 (30-50 du/ac)
- CG - General Commercial
- P-CS - Public and Semi-Public Community Serving
- P-UF - Public and Semi-Public Utilities and Facilities
- P-TF - Public and Semi-Public - Transportation Facilities
- IL - Light Industrial
- OS-PR - Open Space Parks and Recreation
- OS-C - Open Space Conservation

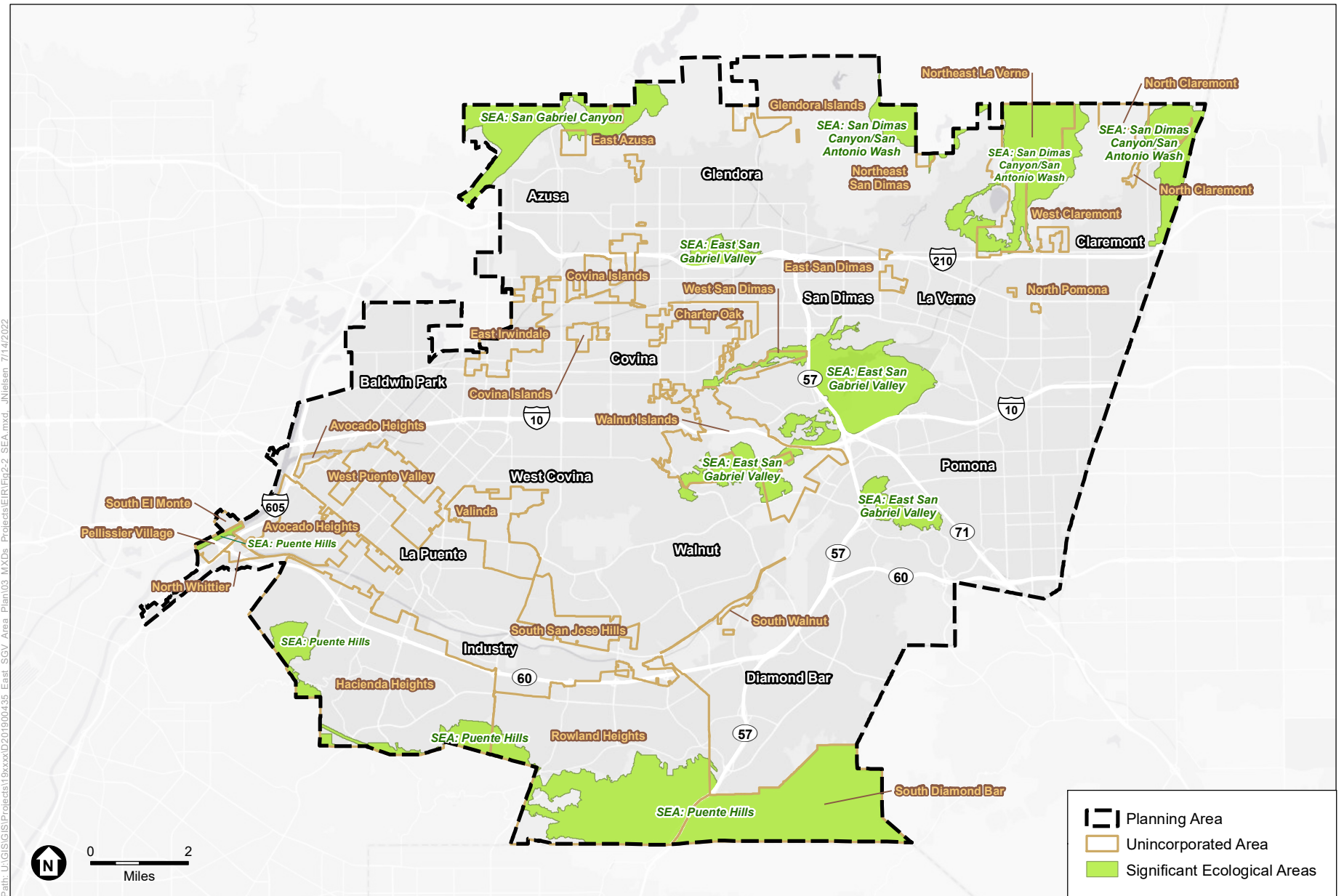


SOURCE: ESRI; Los Angeles County GIS; ESA, 2021.

East San Gabriel Valley Area Plan



Figure 2-1
General Plan Land Uses

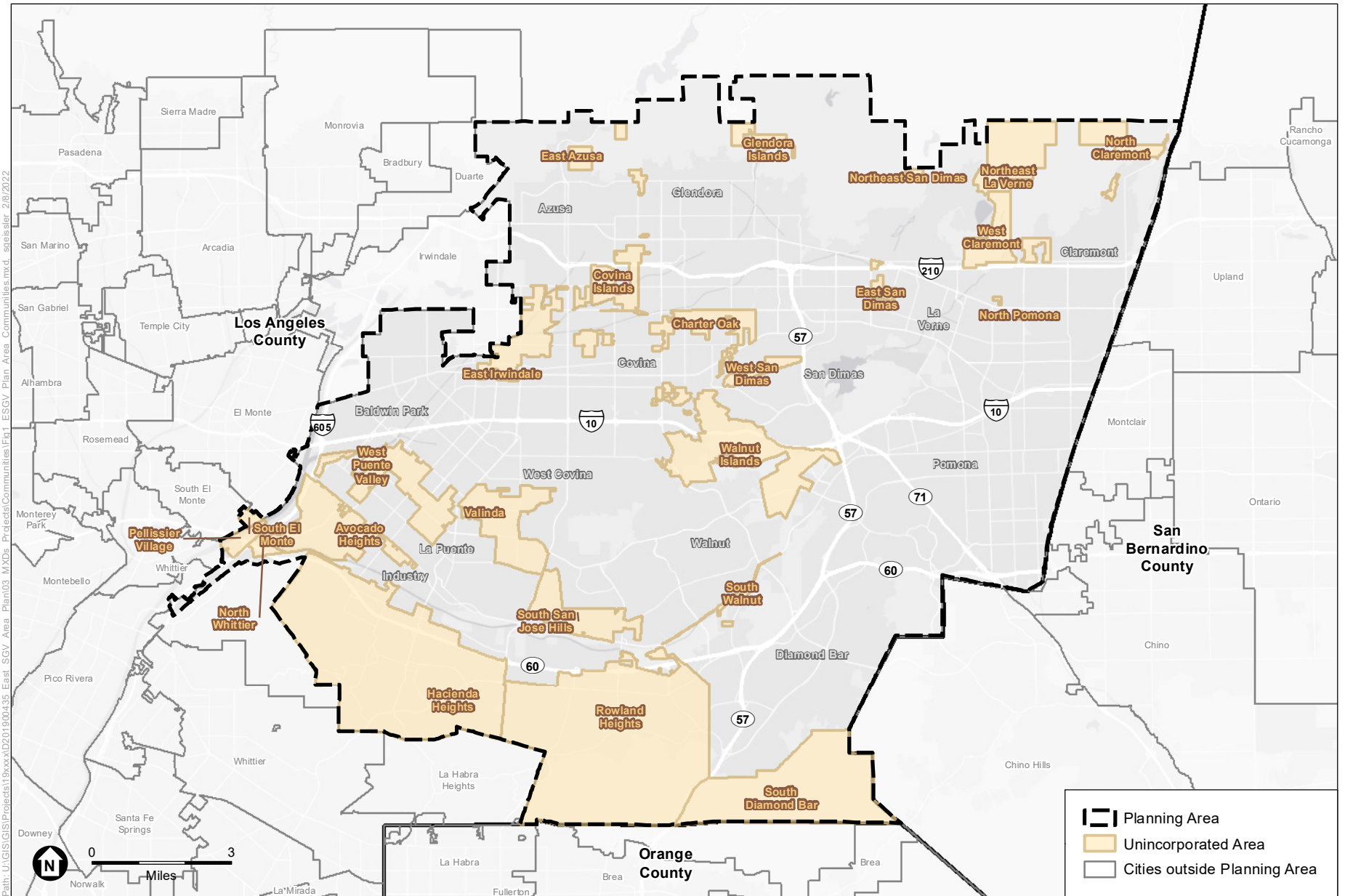


SOURCE: ESRI; Los Angeles County GIS; ESA, 2022.

East San Gabriel Valley Area Plan

Figure 2-2
Significant Ecological Areas



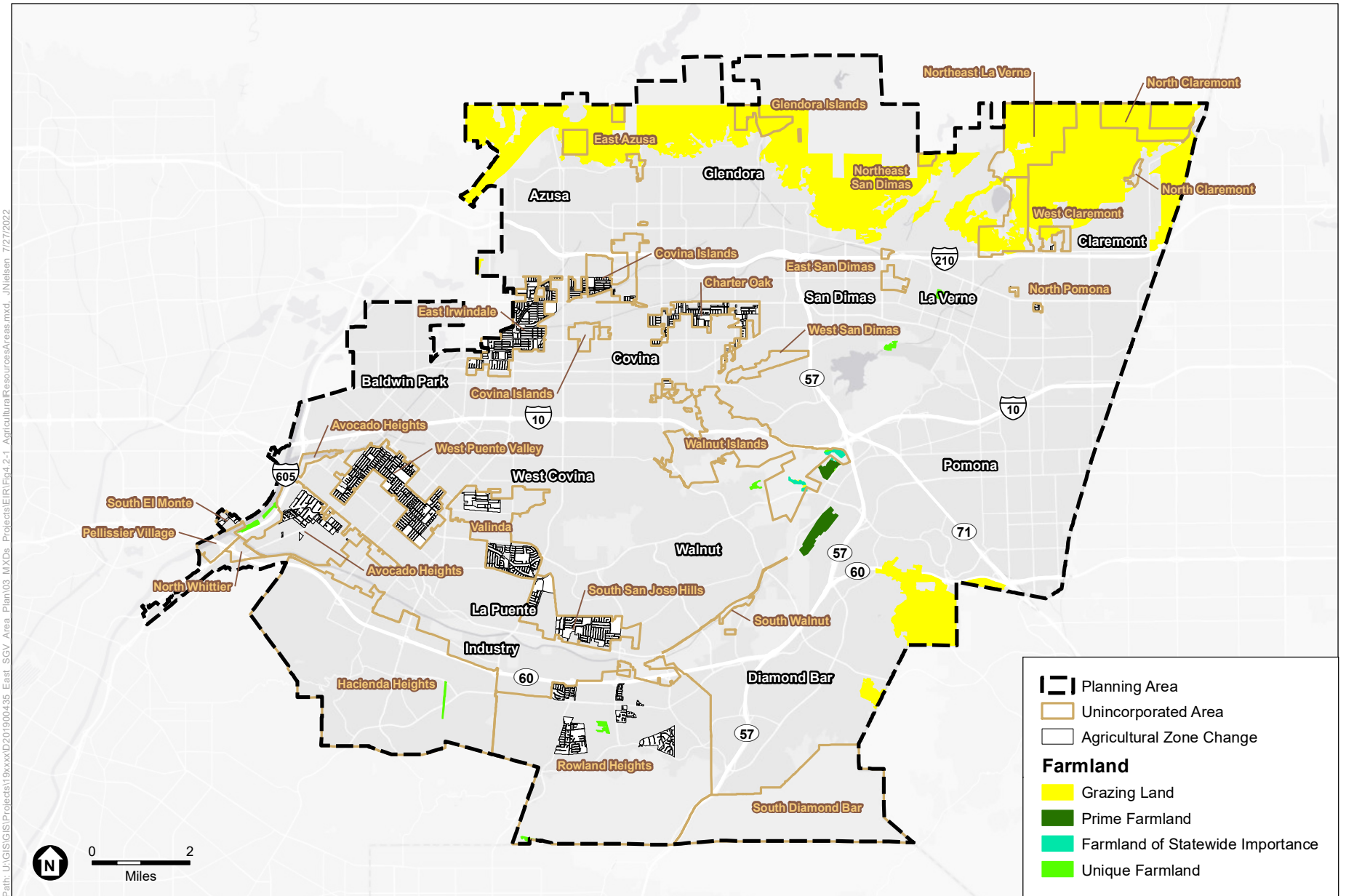


SOURCE: ESRI; Los Angeles County GIS; ESA, 2022

East San Gabriel Valley Area Plan

Figure 3-1
ESGVAP Communities



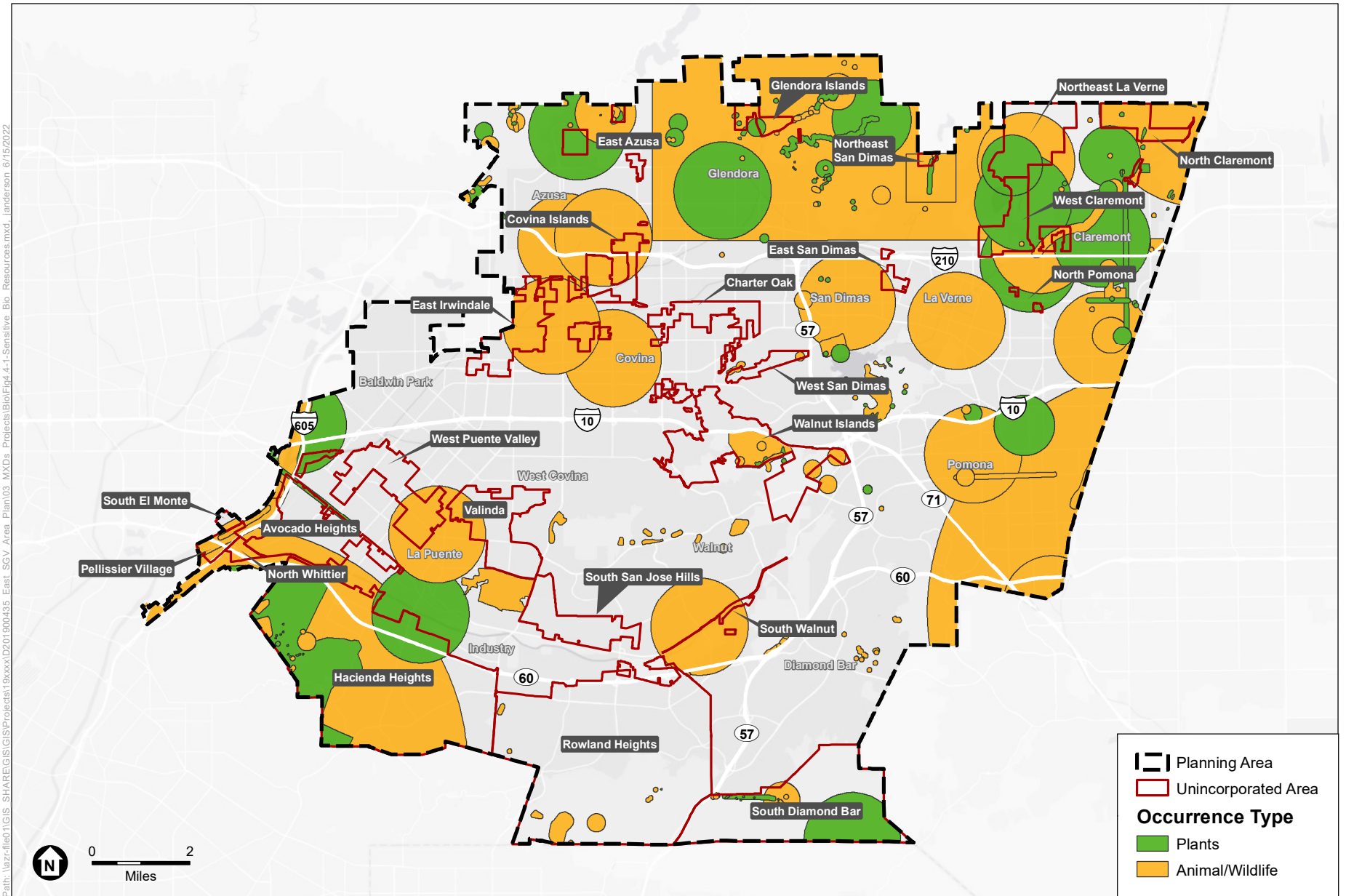


SOURCE: ESRI; Los Angeles County GIS; FMMP, 2018; ESA, 2022.

East San Gabriel Valley Area Plan

Figure 4.2-1
Agricultural Resource Areas





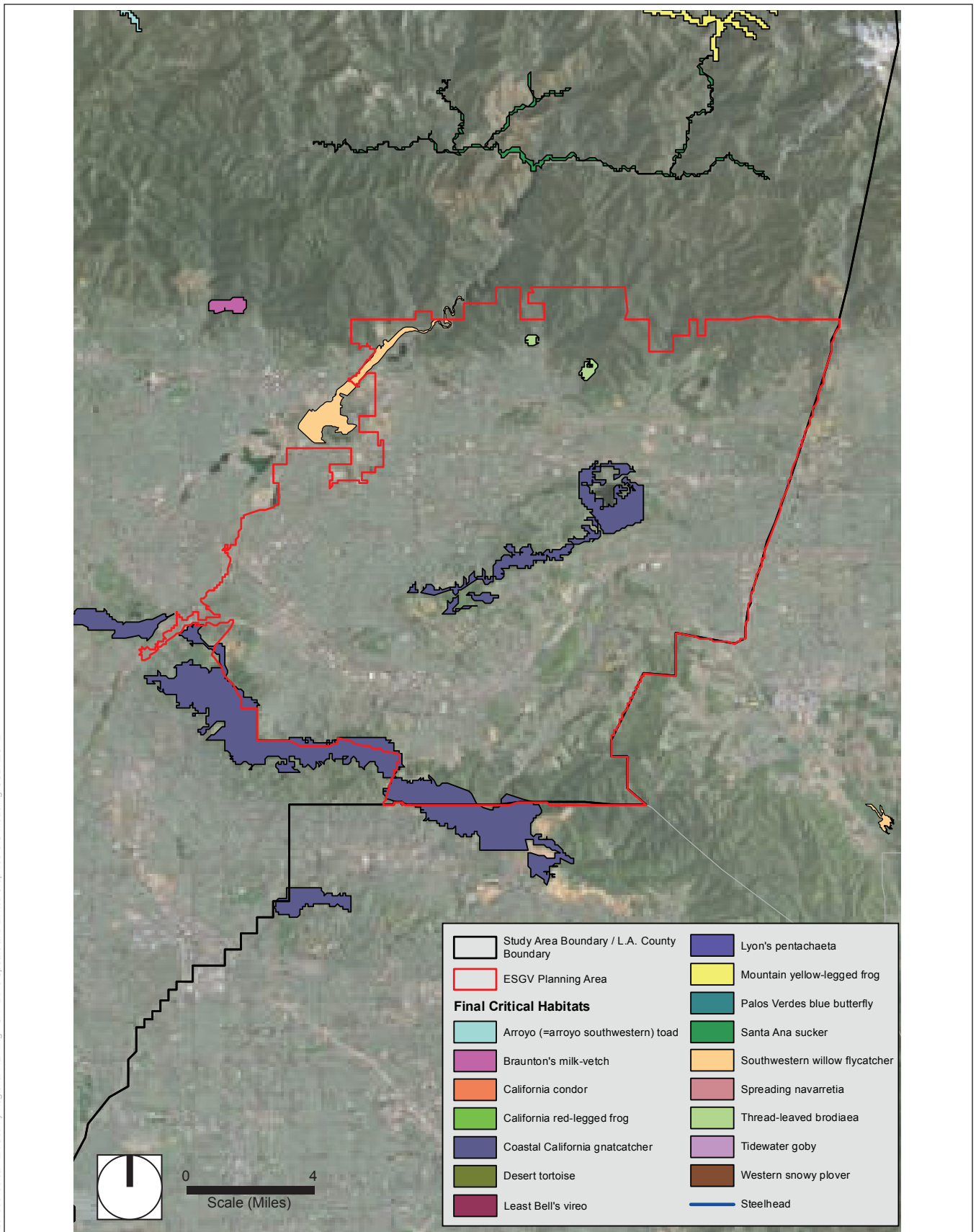
SOURCE: ESRI; Los Angeles County GIS; CNDDb, 2021; ESA, 2022.

East San Gabriel Valley Area Plan

Figure 4.4-1
Sensitive Biological Resources



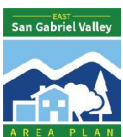
D:201900495.02 - LA County Regional Planning - CAP 2045 Update and EIR/05 Graphics-GIS-Modeling-USE AZURE

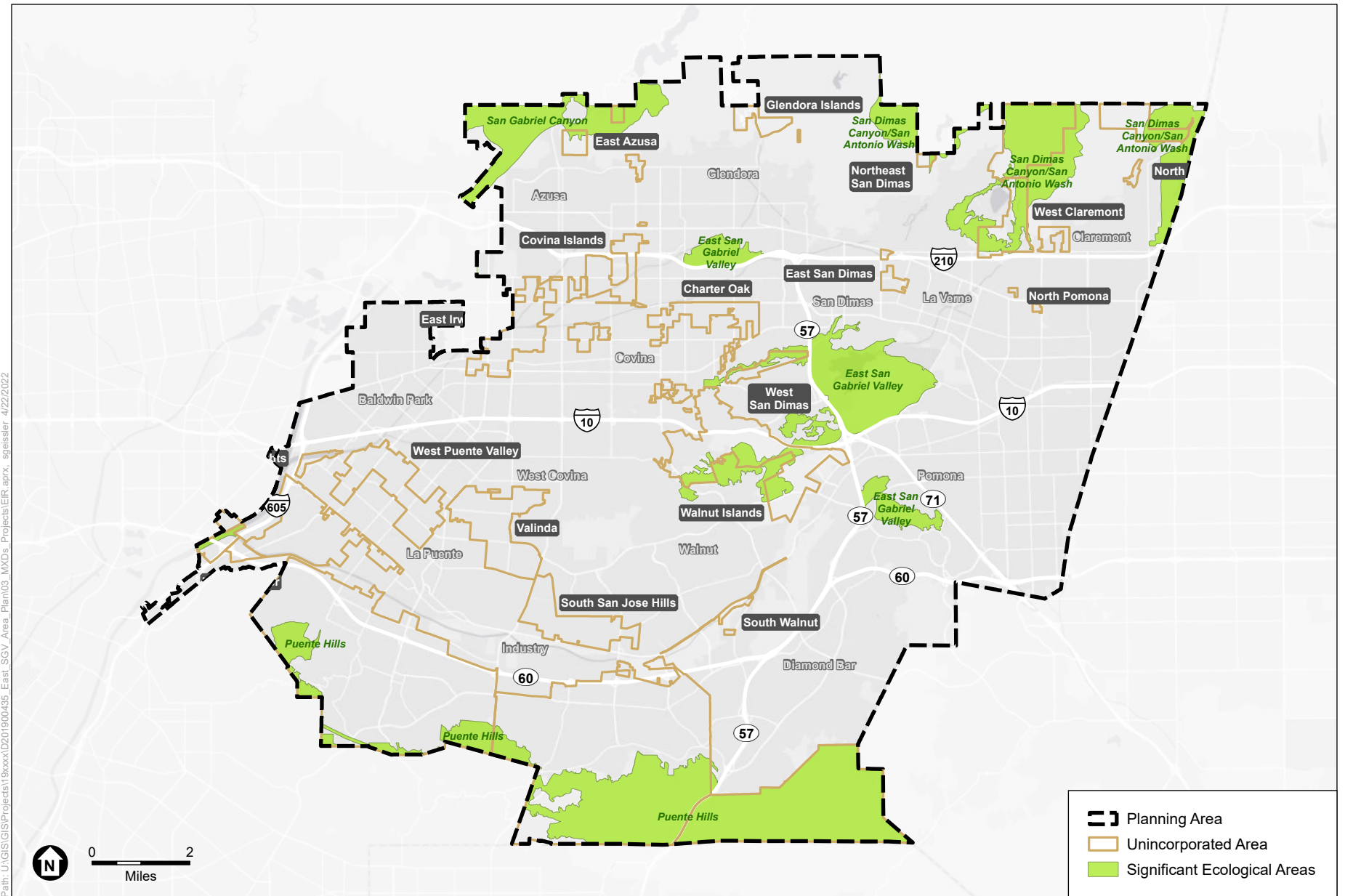


SOURCE: Los Angeles County General Plan, 2014

East San Gabriel Valley Area Plan

Figure 4.4-2
Designated Critical Habitats



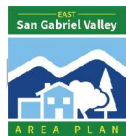


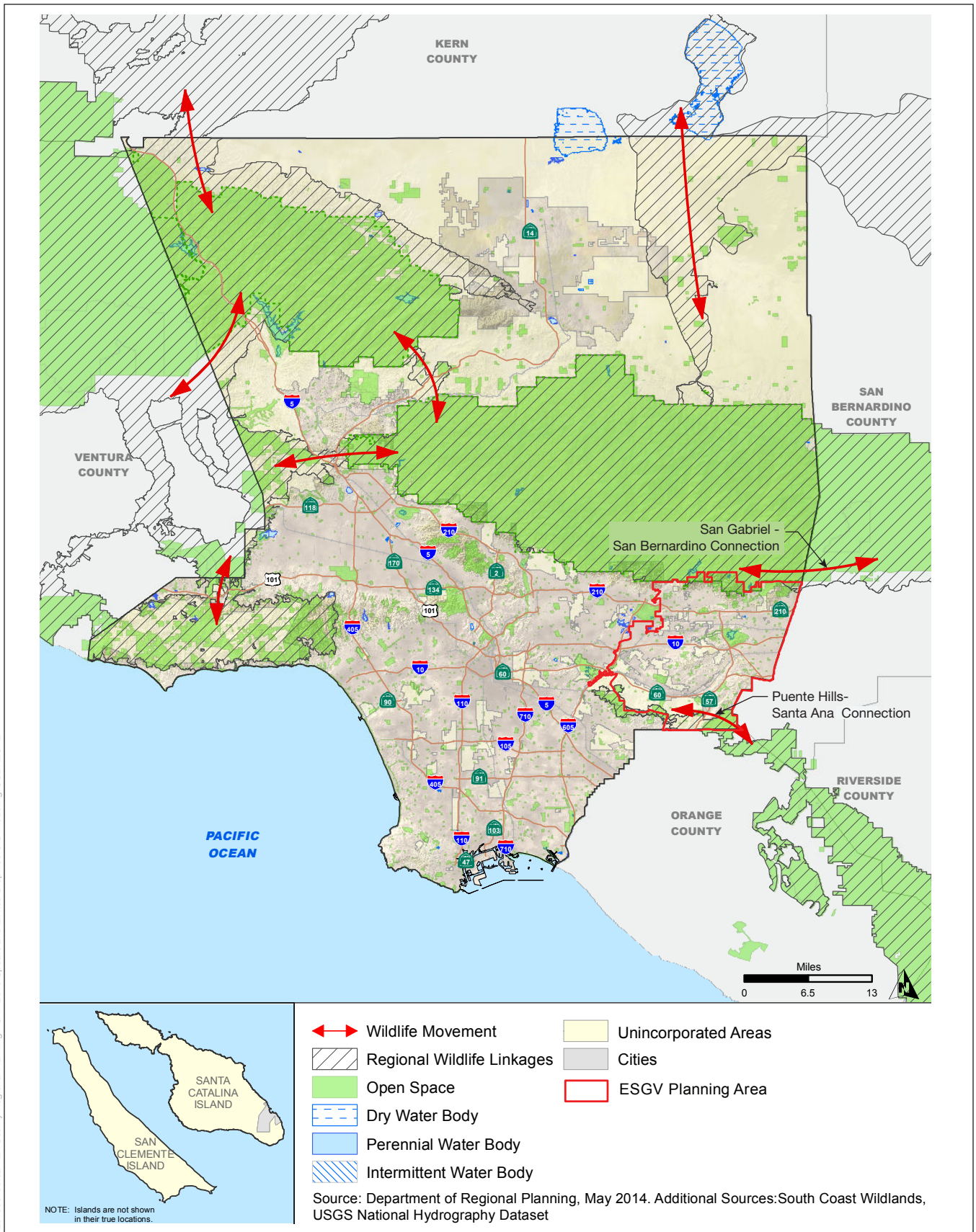
Path: U:\GIS\GIS\Projects\19xxxx\1201900435_East_SGV_Area_Plan\03_MXD\Projects\EAIR.aprx_sgrs\slr_4/22/2022

SOURCE: ESRI; Los Angeles County GIS; ESA, 2022

East San Gabriel Valley Area Plan

Figure 4.4-3
Significant Ecological Areas





SOURCE: Los Angeles County General Plan, 2014

East San Gabriel Valley Area Plan

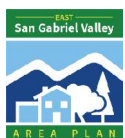
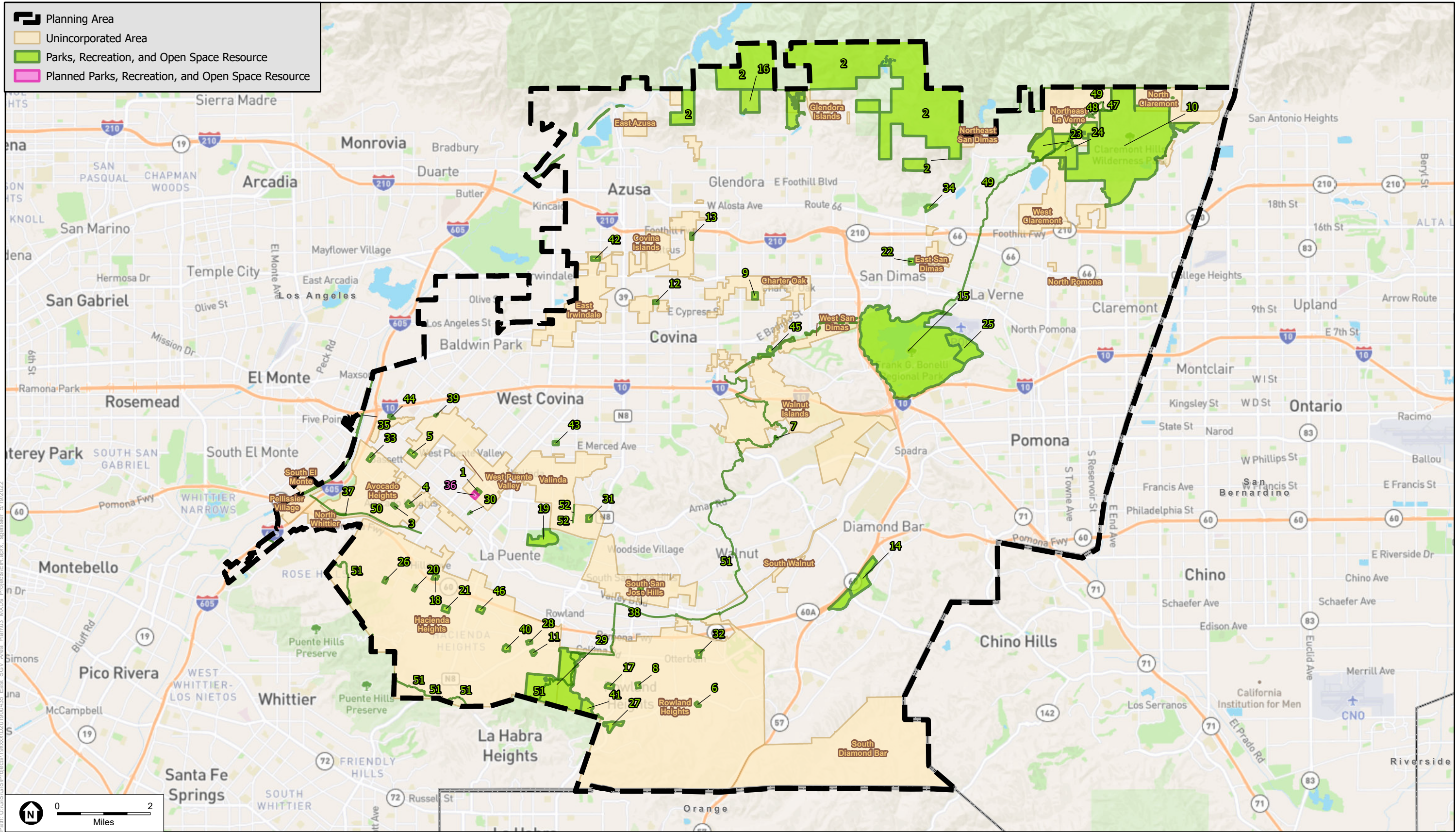


Figure 4.4-4
Regional Habitat Linkages



Path: U:\GIS\Projects\19xxxx\1900045_East_SGV_Area_Plan\03_MXD\Projects\ER.aprx_splines\5192022

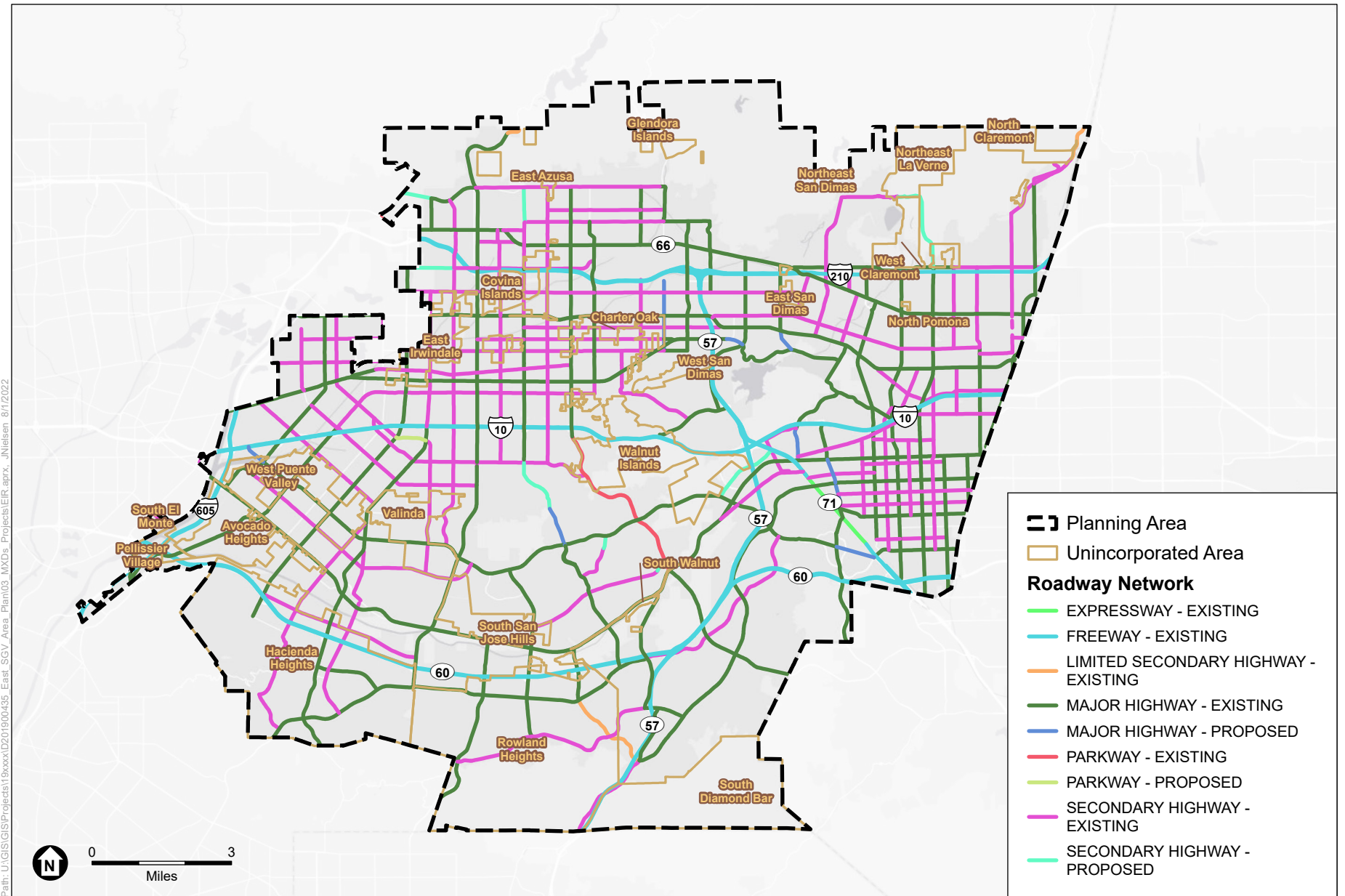
SOURCE: LADPR, June 2021; ESA, 2022

East San Gabriel Valley Area Plan

Figure 4.14-1

Parks, Recreation, and Open Space Resources



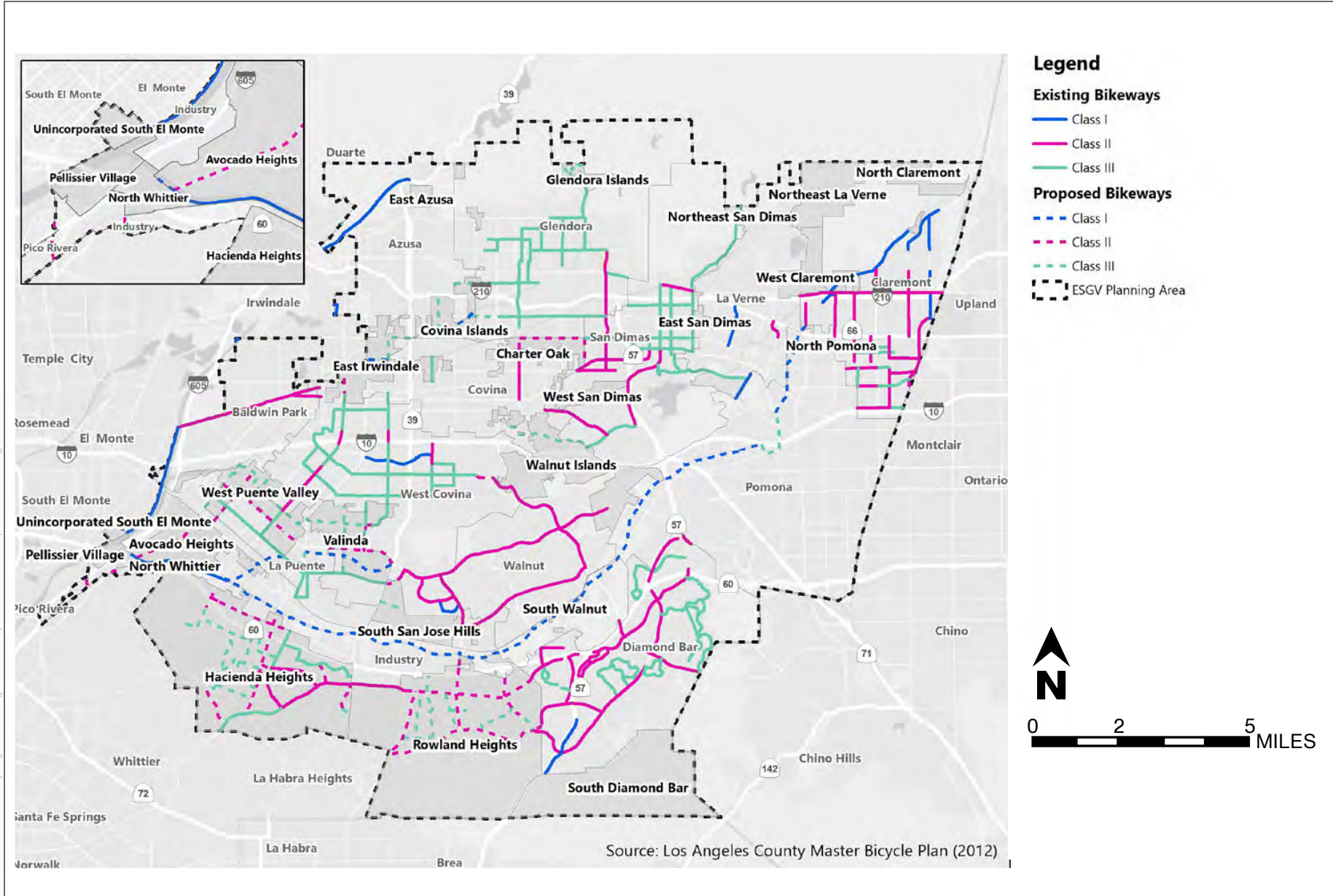


SOURCE: ESRI; Los Angeles County GIS (Highway Plan Policy Map); ESA, 2022

East San Gabriel Valley Area Plan

Figure 4.15-1
Existing and Proposed Roadway Network



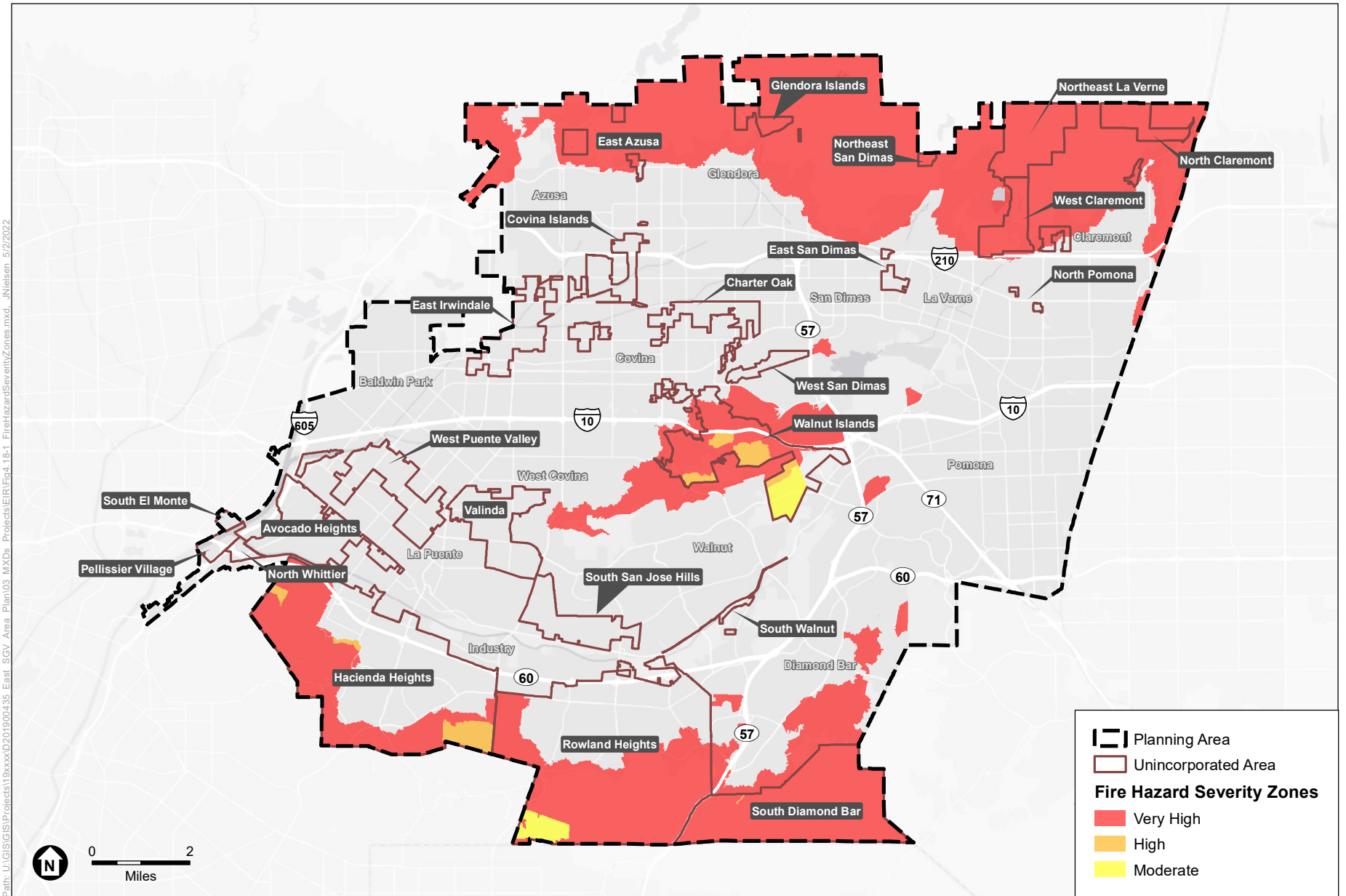


SOURCE: Draft Mobility Action Plan 2022

East San Gabriel Valley Area Plan

Figure 4.15-3
Existing and Proposed Bikeways





SOURCE: ESRI; Los Angeles County GIS; ESA, 2022.

East San Gabriel Valley Area Plan

Figure 4.18-1
Fire Hazard Severity Zones

