

APPENDIX D

PHASE I CULTURAL RESOURCES ASSESSMENT

PHASE I CULTURAL RESOURCES ASSESSMENT

CADO Project

City of Menifee, Riverside County, California



BCRCONSULTING LLC



July 21, 2022

PHASE I CULTURAL RESOURCES ASSESSMENT

CADO Project

City of Menifee, Riverside County, California

Prepared on behalf of:

Kari Cano
Kimley-Horn
3880 Lemon Street, Suite 420
Riverside, California 92501

Prepared for:

The City of Menifee
29844 Haun Road
Menifee, California 92586

Prepared by:

David Brunzell, M.A., RPA
Principal Investigator
BCR Consulting LLC
Claremont, California 91711

Project No. KIM2207

Sites Recorded: None

Keywords: Intensive Survey of Approximately 36.8 Acres

USGS Quadrangle: 7.5-minute *Romoland* (1979), California

Section 17 of Township 5 South, Range 3 West, San Bernardino Base and Meridian



BCRCONSULTING LLC

July 21, 2022

MANAGEMENT SUMMARY

BCR Consulting LLC (BCR Consulting) is under contract to Kimley-Horn to conduct a Cultural Resources Assessment of the CADO Project (the project) located in the City of Menifee (City), Riverside County, California. Tasks completed for the scope of work include a cultural resources records search, an intensive-level pedestrian cultural resources survey, completion of this technical report, a Sacred Lands File search with the Native American Heritage Commission, Tribal Scoping, and a Paleontological Overview. These tasks were performed in fulfillment of California Environmental Quality Act (CEQA) requirements. The Eastern Information Center (EIC) at the University of California, Riverside conducted the cultural resources records search. The records search revealed that 24 cultural resource studies have taken place resulting in the recording of three cultural resources within the research radius. Of these studies one assessed the project site for cultural resources. This study was updated twice resulting in no cultural resources identified within the project boundaries.

During the field survey, BCR Consulting personnel did not identify any cultural resources (including historic-period architectural resources, prehistoric archaeological resources, or historic-period archaeological resources) within the project site boundaries, despite relatively high surface visibility. The project site has been subject to severe disturbances associated with mechanical clearing, discing, and construction, development, and use of the modern rural residential complex. These factors confer low sensitivity for significant buried resources within the project site boundaries. However, while the current study has not indicated sensitivity for unknown cultural resources within the project boundaries, ground disturbing activities always have the potential to reveal buried deposits not observed on the surface. Prior to the initiation of ground-disturbing activities, field personnel should be alerted to the possibility of buried prehistoric or historic cultural deposits. In the event that field personnel encounter buried cultural materials, work in the immediate vicinity of the find should cease and a qualified archaeologist should be retained to assess the significance of the find. The qualified archaeologist would have the authority to stop or divert construction excavation as necessary. If the qualified archaeologist finds that any cultural resources present meet eligibility requirements for listing on the California Register or the National Register, plans for the treatment, evaluation, and mitigation of impacts to the find will need to be developed. Prehistoric or historic cultural materials that may be encountered during ground-disturbing activities include:

- prehistoric flaked-stone artifacts and debitage (waste material), consisting of obsidian, basalt, and or cryptocrystalline silicates;
- groundstone artifacts, including mortars, pestles, and grinding slabs;
- dark, greasy soil that may be associated with charcoal, ash, bone, shell, flaked stone, groundstone, and fire affected rocks;
- human remains;
- historic-period artifacts such as glass bottles and fragments, cans, nails, ceramic and pottery fragments, and other metal objects;
- historic-period structural or building foundations, walkways, cisterns, pipes, privies, and other structural elements.

Findings were negative during the Sacred Lands File search with the NAHC. The City will initiate Assembly Bill (AB) 52 Native American Consultation for the project. Since the City will initiate and carry out the required Native American Consultation, the results of the consultation are not provided in this report. However, this report may be used during the consultation process, and BCR Consulting staff is available to answer questions and address concerns as necessary. BCR Consulting sent notifications to local tribes listed by the NAHC to discern whether tribes were aware of resources within the project site boundaries. Representatives from Pechanga Band of Indians and Soboba Band of Luiseno Indians accompanied BCR Consulting archaeologists during the pedestrian field survey. The results of tribal correspondence is provided in Appendix A.

According to CEQA Guidelines, projects subject to CEQA must determine whether the project would “directly or indirectly destroy a unique paleontological resource”. The Paleontological Overview provided in Appendix B has recommended that:

The geologic units underlying the project area are mapped as middle to early Pleistocene alluvial gravel, silt, sand, and clay, and as Cretaceous grandiorite and tonalite (Morton, Bovard, and Morton 2003). While the grandiorite and tonalite units are considered to be of low paleontological value, the Pleistocene alluvial units are considered highly paleontologically sensitive. Western Science Center does not have localities within the project area or within a 1 mile radius, but does have numerous localities in similarly mapped Pleistocene units in the City of Menifée.

Any fossils recovered from the Menifée Industrial Warehouse Project would be scientifically significant. Excavation activity associated with development of the project area would impact the paleontologically sensitive Pleistocene units and it is the recommendation of the Western Science Center that a paleontological resource mitigation program be put in place to monitor, salvage, and curate any recovered fossils associated with the current study area.

If human remains are encountered during the undertaking, State Health and Safety Code Section 7050.5 states that no further disturbance shall occur until the County Coroner has made a determination of origin and disposition pursuant to Public Resources Code Section 5097.98. The County Coroner must be notified of the find immediately. If the remains are determined to be prehistoric, the Coroner will notify the Native American Heritage Commission (NAHC), which will determine and notify a Most Likely Descendant (MLD). With the permission of the landowner or his/her authorized representative, the MLD may inspect the site of the discovery. The MLD shall complete the inspection within 48 hours of notification by the NAHC.

TABLE OF CONTENTS

MANAGEMENT SUMMARY	ii
INTRODUCTION.....	1
REGULATORY SETTING	1
PERSONNEL	4
NATURAL SETTING	5
GEOLOGY	5
HYDROLOGY	5
VEGETATION	5
CULTURAL SETTING	6
PREHISTORIC CONTEXT	6
ETHNOGRAPHY.....	7
HISTORY	8
METHODS	11
RESEARCH	11
FIELD SURVEY	11
RESULTS	11
RESEARCH	11
FIELD SURVEY	12
RECOMMENDATIONS	13
CERTIFICATION.....	14
REFERENCES.....	15

APPENDICES

- A: NAHC SACRED LANDS FILE SEARCH AND TRIBAL SCOPING
CORRESPONDENCE
- B: PALEONTOLOGICAL OVERVIEW
- C: PHOTOGRAPHS
- D: RECORDS SEARCH BIBLIOGRAPHY

FIGURES

1: Project Location Site.....	2
-------------------------------	---

TABLES

A: Cultural Resource Studies	12
B: Cultural Resources Summary	12

INTRODUCTION

BCR Consulting LLC (BCR Consulting) is under contract to Kimley-Horn to conduct a Cultural Resources Assessment of the CADO Project (the project) located in the City of Menifee (City), Riverside County, California. The project site comprises approximately 36.8 acres located in Section 17 of Township 5 South, Range 3 West, San Bernardino Baseline and Meridian, in the City of Menifee. The project site is depicted on the United States Geological Survey (USGS) *Romoland, California* (1979) 7.5-minute topographic quadrangle (Figure 1).

Regulatory Setting

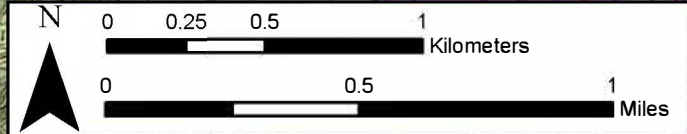
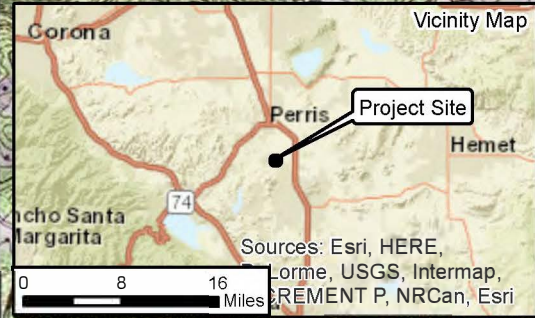
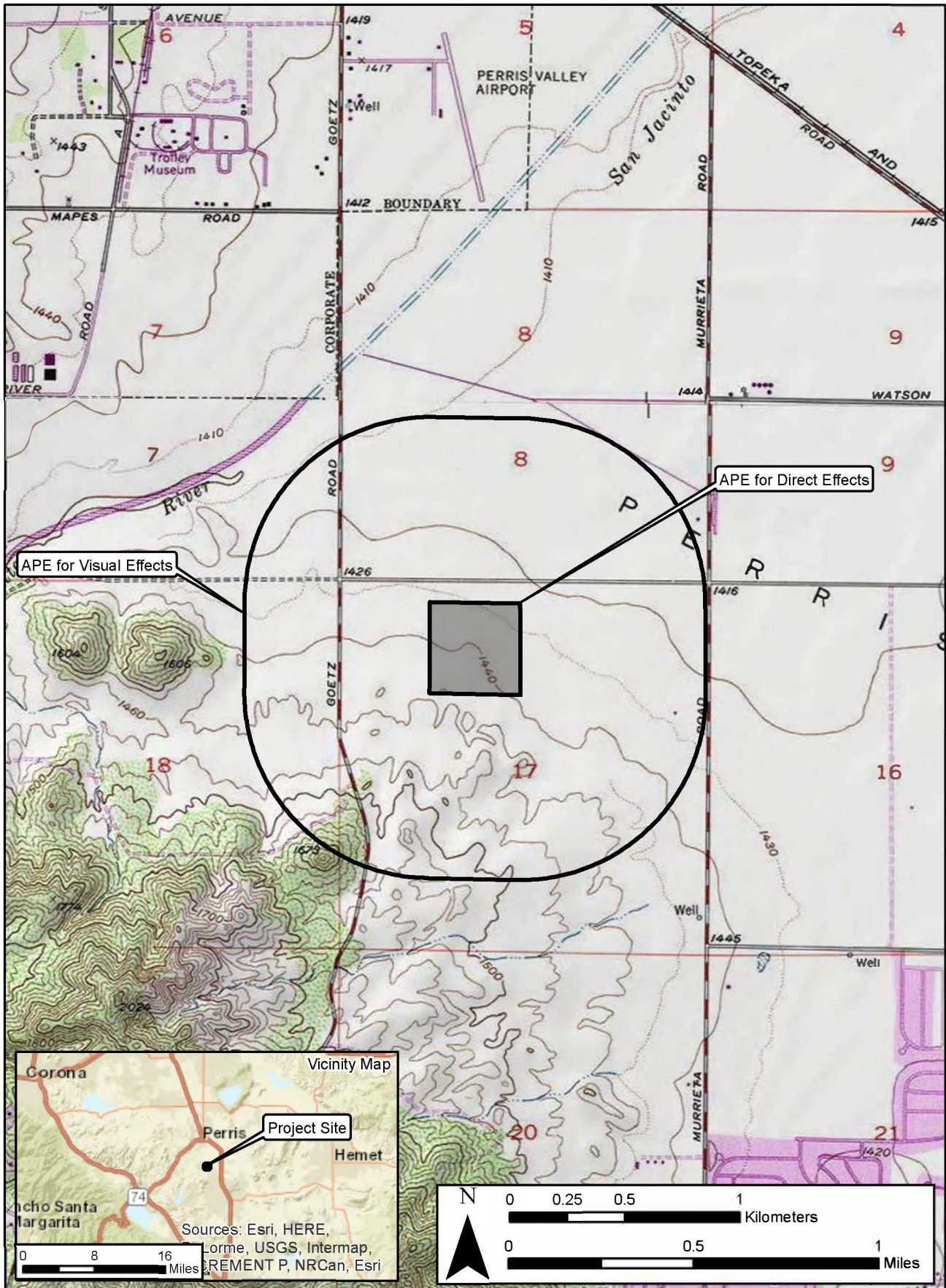
The California Environmental Quality Act. CEQA applies to all discretionary projects undertaken or subject to approval by the state's public agencies (California Code of Regulations 14(3), § 15002(i)). Under CEQA, "A project with an effect that may cause a substantial adverse change in the significance of a historical resource is a project that may have a significant effect on the environment" (Cal. Code Regs. tit. 14(3), § 15064.5(b)). State CEQA Guidelines section 15064.5(a) defines a "historical resource" as a resource that meets one or more of the following criteria:

- Listed in, or eligible for listing in, the California Register of Historical Resources (California Register)
- Listed in a local register of historical resources (as defined at Cal. Public Res. Code § 5020.1(k))
- Identified as significant in a historical resource survey meeting the requirements of § 5024.1(g) of the Cal. Public Res. Code
- Determined to be a historical resource by a project's lead agency (Cal. Code Regs. tit. 14(3), § 15064.5(a))

A historical resource consists of "Any object, building, structure, site, area, place, record, or manuscript which a lead agency determines to be historically significant or significant in the architectural, engineering, scientific, economic, agricultural, educational, social, political, military, or cultural annals of California...Generally, a resource shall be considered by the lead agency to be 'historically significant' if the resource meets the criteria for listing in the California Register of Historical Resources" (Cal. Code Regs. tit. 14(3), § 15064.5(a)(3)).

The significance of a historical resource is impaired when a project demolishes or materially alters in an adverse manner those physical characteristics of a historical resource that convey its historical significance and that justify its eligibility for the California Register. If an impact on a historical or archaeological resource is significant, CEQA requires feasible measures to minimize the impact (State CEQA Guidelines § 15126.4 (a)(1)). Mitigation of significant impacts must lessen or eliminate the physical impact that the project will have on the resource.

Section 5024.1 of the Cal. Public Res. Code established the California Register. Generally, a resource is considered by the lead agency to be "historically significant" if the resource meets the criteria for listing in the California Register (Cal. Code Regs. tit. 14(3),



§ 15064.5(a)(3)). The eligibility criteria for the California Register are similar to those of the National Register of Historic Places (National Register), and a resource that meets one of more of the eligibility criteria of the National Register will be eligible for the California Register.

The California Register program encourages public recognition and protection of resources of architectural, historical, archaeological, and cultural significance, identifies historical resources for state and local planning purposes, determines eligibility for state historic preservation grant funding and affords certain protections under CEQA. Criteria for Designation:

1. Associated with events that have made a significant contribution to the broad patterns of local or regional history or the cultural heritage of California or the United States.
2. Associated with the lives of persons important to local, California or national history.
3. Embodies the distinctive characteristics of a type, period, region or method of construction or represents the work of a master or possesses high artistic values.
4. Has yielded, or has the potential to yield, information important to the prehistory or history of the local area, California or the nation.

In addition to meeting one or more of the above criteria, the California Register requires that sufficient time has passed since a resource's period of significance to "obtain a scholarly perspective on the events or individuals associated with the resources." (CCR 4852 [d][2]). Fifty years is normally considered sufficient time for a potential historical resource, and in order that the evaluation remain valid for a minimum of five years after the date of this report, all resources older than 45 years (i.e. resources from the "historic-period") will be evaluated for California Register listing eligibility, or CEQA significance. The California Register also requires that a resource possess integrity. This is defined as the ability for the resource to convey its significance through seven aspects: location, setting, design, materials, workmanship, feeling, and association.

Assembly Bill 52. California Assembly Bill 52 was approved on September 25, 2014. As stated in Section 11 of AB 52, the act applies only to projects that have a notice of preparation or a notice of negative declaration or mitigated negative declaration filed on or after July 1, 2015.

AB 52 establishes "tribal cultural resources" (TCRs) as a new category of resources under CEQA. As defined under Public Resources Code Section 21074, TCRs are "sites, features, places, cultural landscapes, sacred places, and objects with cultural value to a California Native American Tribe" that are either: (1) included or determined to be eligible for inclusion in the California Register; included in a local register of historical resources as defined in Public Resources Code Section 5020.1(k); or (2) determined by the lead agency to be significant pursuant to the criteria for inclusion in the CRHR set forth in Public Resources Code Section 5024.1(c), if supported by substantial evidence and taking into account the significance of the resource to a California Native American tribe. A "historical resource" as defined in Public Resources Code Section 21084.1, a "unique archaeological resource" as

defined in Public Resources Code Section 21083.2(g), or a “nonunique archaeological resource” as defined in Public Resources Code Section 21083.2(h) may also be TCRs.

AB 52 further establishes a new consultation process with California Native American tribes for proposed projects in geographic areas that are traditionally and culturally affiliated with that tribe. Per Public Resources Code Section 21073, “California Native American tribe” includes federally and non-federally recognized tribes on the NAHC contact list. Subject to certain prerequisites, AB 52 requires, among other things, that a lead agency consult with the geographically affiliated tribe before the release of an environmental review document for a proposed project regarding project alternatives, recommended mitigation measures, or potential significant effects, if the tribe so requests in writing. If the tribe and the lead agency agree upon mitigation measures during their consultation, these mitigation measures must be recommended for inclusion in the environmental document (Public Resources Code Sections 21080.3.1, 21080.3.2, 21082.3, 21084.2, and 21084.3). Since the City will initiate and carry out the required AB52 Native American Consultation, the results of the consultation are not provided in this report. However, this report may be used during the consultation process, and BCR Consulting staff is available to answer questions and address comments as necessary. BCR Consulting sent letters to local Tribes listed by the NAHC to discern whether tribes were aware of resources within the project site boundaries. The results of this correspondence is provided in Appendix A.

Paleontological Resources. CEQA provides guidance relative to significant impacts on paleontological resources, indicating that a project would have a significant impact on paleontological resources if it disturbs or destroys a unique paleontological resource or site, or unique geologic feature. Section 5097.5 of the California Public Resources Code specifies that any unauthorized removal of paleontological remains is a misdemeanor. Further, California Penal Code Section 622.5 sets the penalties for damage or removal of paleontological resources. CEQA documentation prepared for projects would be required to analyze paleontological resources as a condition of the CEQA process to disclose potential impacts. Please note that as of January 2018 paleontological resources are considered in the geological rather than cultural category. Therefore, paleontological resources are not summarized in the body of this report. A paleontological overview completed by professional paleontologists from the Western Science Center is provided as Appendix B.

Personnel

David Brunzell, M.A., RPA, acted as Principal Investigator and compiled the technical report. BCR Consulting Archaeological Crew Chief Nicholas Shepetuk, B.A., and BCR Consulting Archaeological Field Technician Fabian Martinez conducted the field survey with Pechanga Band of Indians Representative John Jackson, and Soboba Band of Luiseno Indians Representative William Swanson observing. Eastern Information Center (EIC) staff completed the records search. The Native American Heritage Commission completed the Sacred Lands File search. The Western Science Center completed the paleontological overview.

NATURAL SETTING

Geology

The project site is situated in the Perris Valley, which occupies a portion of California's Peninsular Range geologic province that encompasses western Riverside County. Crystalline rocks in the area include gabbro and granodiorite of the southern California batholith. These resistant rocks weather to form dark or light colored, boulder-covered conical buttes and hills. They are granitic and have intruded and metamorphosed to locally form gneissic and schistose rocks (Rogers 1965). The crystalline rocks in the area are covered by Older Pleistocene alluvium (Kennedy 1977) that, in turn, is covered by a thin horizon of Holocene soils and recent stream sediments in channels (Morton 2003; Rogers 1965). Pedogenic carbonate (caliche or hardpan) is a depositional product associated with the Holocene soils and invades the Pleistocene sediments. The southern tip of the Northern Peninsular Range has a number of igneous rocks utilized by Native Americans for food (particularly seed) processing (see Brunzell 2007). These include granodiorites, quartz monzonites, and breccias, which are found locally. Metamorphosed sedimentary rocks, such as metamorphosed quartzite, are also found near the project site. Olivine basalt and andesite containing phenocrysts have also been locally utilized for the prehistoric manufacture of chipped stone tools (ibid.).

Hydrology

The region is characterized by a semi-arid climate, with dry, hot summers, and moderate winters. Rainfall ranges from 12 to 16 inches annually (Beck and Haase 1974). Precipitation usually occurs in the form of winter rain, with occasional monsoonal showers in late summer. The nearest water source is the San Jacinto River (now channelized) which flows from northeast to southwest approximately 0.5 miles to the northwest of the project site. Elevation of the project site ranges from approximately 1,430 to 1,450 feet above mean sea level (AMSL). As such, it is characterized as lower Sonoran Life Zone, represented in cismontane valleys and low-mountain slopes (Jaeger and Smith 1971).

Vegetation

Coastal sage scrub plant community dominates the local vegetation. Signature plant species within the Coastal Sage Scrub Habitat includes black sage (*Salvia mellifera*), California brittlebush (*Encelia californica*), California buckwheat (*Eriogonum fasciculatum*), California sagebrush (*Artemisia californica*), deerweed (*Lotus scoparius*), golden yarrow (*Eriophyllum confertiflorum*), laurel sumac (*Malosma laurina*), lemonadeberry (*Rhus integrifolia*), poison oak (*Toxicodendron diversilobum*), purple sage (*Salvia leucophylla*), sticky monkeyflower (*Mimulus aurantiacus*), sugar bush (*Rhus ovate*), toyon (*Heteromeles arbutifolia*), white sage (*Salvia apiana*), coastal century plant (*Agave shawii*), coastal cholla (*Opuntia prolifera*), Laguna Beach liveforever (*Dudleya stolonifera*), many-stemmed liveforever (*Dudleya multicaulis*), our Lord's candle (*Yucca whipplei*), prickly pear cactus (*Opuntia* spp.) (Williams et al. 2008:118-119). Signature animal species within Coastal Sage Scrub habitat include the kangaroo rat (*Dipodomys* spp.), California horned lizard (*Phrynosoma coronatum frontale*), orange throated whiptail (*Cnemidophorus hyperthrus*), San Diego horned lizard (*Phrynosoma coronatum blainvillii*), brown-headed cowbird (*Molothrus ater*), California gnatcatcher (*Polioptila californica californica*), California quail (*Callipepla californica*), and

San Diego cactus wren (*Campylorhynchus brunneicapillus sandiegensis*) (Williams et al. 2008:118-120).

For details on prehistoric (particularly Luiseño) local use of plant and animal species, see Lightfoot and Parrish (2009), Bean and Shipek (1978:552), and Oxendine (1983:19-29). Sparkman (1908) and Bean and Saubel (1972) have listed the harvesting and processing methods and seasons for edible plants that grow in the above described communities and others).

CULTURAL SETTING

Prehistoric Context

Two primary regional syntheses are commonly utilized in the archaeological literature for southern California. The first was advanced by Wallace in 1955, and defines four cultural horizons, each with characteristic local variations: Early Man Horizon, Milling Stone, Intermediate, and Late Prehistoric. Employing a more ecological approach, Warren (1986) defined five periods in southern California prehistory: Lake Mojave, Pinto, Gypsum, Saratoga Springs, and Protohistoric. Warren viewed cultural continuity and change in terms of various significant environmental shifts, defining the cultural ecological approach for archaeological research of the California deserts and coast. Many changes in settlement patterns and subsistence focus are viewed as cultural adaptations to a changing environment, beginning with the gradual environmental warming in the late Pleistocene, the desiccation of the desert lakes during the early Holocene, the short return to pluvial conditions during the middle Holocene, and the general warming and drying trend, with periodic reversals, that continue to this day (Warren 1986).

Paleoindian (12,000 to 10,000 BP) and Lake Mojave (10,000 to 7000 BP) Periods. Climatic warming characterizes the transition from the Paleoindian Period to the Lake Mojave Period. This transition also marks the end of Pleistocene Epoch and ushers in the Holocene. The Paleoindian Period has been loosely defined by isolated fluted (such as Clovis) projectile points, dated by their association with similar artifacts discovered in-situ in the Great Plains (Sutton 1996:227-228). Some fluted bifaces have been associated with fossil remains of Rancholabrean mammals approximately dated to ca. 13,300-10,800 BP near China Lake in the northern Mojave Desert. The Lake Mojave Period has been associated with cultural adaptations to moist conditions, and resource allocation pointing to more lacustrine environments than previously (Bedwell 1973). Artifacts that characterize this period include stemmed points, flake and core scrapers, choppers, hammerstones, and crescents (Warren and Crabtree 1986:184). Projectile points associated with the period include the Silver Lake and Lake Mojave styles. Lake Mojave sites commonly occur on shorelines of Pleistocene lakes and streams where geological surfaces of that epoch have been identified (Basgall and Hall 1994:69).

Pinto Period (7000 to 4000 BP). The Pinto Period has been largely characterized by desiccation of the southern California region. As formerly rich lacustrine environments began to disappear, the artifact record reveals more sporadic occupation of the drier regions, indicating occupants' recession into the cooler fringes (Warren 1986). Pinto Period sites are rare and are characterized by surface manifestations that usually lack significant in-

situ remains. Artifacts from this era include Pinto projectile points and a flake industry similar to the Lake Mojave tool complex (Warren 1986), though use of Pinto projectile points as an index artifact for the era has been disputed (see Schroth 1994). Milling stones have also occasionally been associated with sites of this period (Warren 1986).

Gypsum Period. (4000 to 1500 BP). A temporary return to moister conditions during the Gypsum Period is postulated to have encouraged technological diversification afforded by the abundance of resources available (Warren 1986:419-420; Warren and Crabtree 1986:189). Lacustrine environments reappear and begin to be exploited during this era (Shutler 1961, 1968). Concurrently a more diverse artifact assemblage reflects intensified reliance on plant resources. The new artifacts include milling stones, mortars, pestles, and a proliferation of Humboldt Concave Base, Gypsum Cave, Elko Eared, and Elko Corner-notched dart points (Warren 1986; Warren and Crabtree 1986). Other artifacts include leaf-shaped projectile points, rectangular-based knives, drills, large scraper planes, choppers, hammerstones, shaft straighteners, incised stone pendants, and drilled slate tubes. The bow and arrow appears around 1500 BP, evidenced by the presence of a smaller type of projectile point, the Rose Spring point (Rogers 1939; Schroeder 1953, 1961; Shutler 1961; Yohe 1992).

Saratoga Springs Period (1500 to 800 BP). During the Saratoga Springs Period regional cultural diversifications of Gypsum Period developments are evident. Influences from Patayan/Yuman assemblages are apparent in the southern inland areas, and include buff and brown wares often associated with Cottonwood and Desert Side-notched projectile points (Warren 1986:423). Obsidian becomes more commonly used throughout southern California and characteristic artifacts of the period include milling stones, mortars, pestles, ceramics, and ornamental and ritual objects. More structured settlement patterns are evidenced by large villages, and three types of identifiable archaeological sites (major habitation, temporary camps, and processing stations) emerge (McGuire and Hall 1988). Diversity of resource exploitation continues to expand, indicating a much more generalized, somewhat less mobile subsistence strategy.

Shoshonean Period (800 BP to Contact). The Shoshonean period is the first to benefit from contact-era ethnography and is subject to its inherent biases. Interviews of living informants allowed anthropologists to match artifact assemblages and particular traditions with linguistic groups, and plot them geographically (see Kroeber 1925; Gifford 1918; Strong 1929). During the Shoshonean Period continued diversification of site assemblages, and reduced Anasazi influence both coincide with the expansion of Numic (Uto-Aztecan language family) speakers across the Great Basin, Takic (Uto-Aztecan language family) speakers into southern California, and the Hopi across the Southwest (Sutton 1996). Hunting and gathering continued to diversify, and the diagnostic arrow points include desert side-notch and cottonwood triangular. Ceramics continue to proliferate, though are more common in southeastern Riverside County during this period (Warren and Crabtree 1986). Trade routes have become well established between coastal and inland groups.

Ethnography

The Project site is situated within the traditional boundaries of the Luiseño (Bean and Shippek 1978; Kroeber 1925), and is peripheral to the Cahuilla area. Each of these groups belongs

to the Cupan group of the Takic subfamily of languages (Bean and Shipek 1978:550). Like other Native American groups in southern California, they practiced semi-nomadic hunter-gatherer subsistence strategies and commonly exploited seasonably available plant and animal resources. Spanish missionaries were the first outsiders to encounter these groups during the late 18th century.

Luiseño. Typically, the native culture groups in southern California are named after nearby Spanish missions, and such is the case for this population. For instance, the term “Luiseño” is applied to the natives inhabiting the region within the “ecclesiastical jurisdiction of Mission San Luis Rey ...[and who shared] an ancestral relationship which is evident in their cosmogony, and oral tradition, common language, and reciprocal relationship in ceremonies” (Oxendine 1983:8). The first written accounts of the Luiseño are attributed to the mission fathers; later documentation was produced by Sparkman (1908), Oxendine (1983) and others. Prior to Spanish occupation of California, the territory of the Luiseño extended along the coast from Agua Hedionda Creek to the south, Aliso Creek to the northwest, and the Elsinore Valley and Palomar Mountain to the east. These territorial boundaries were somewhat fluid and changed through time. They encompassed an extremely diverse environment that included coastal beaches, lagoons and marshes, inland river valleys and foothills, and mountain groves of oaks and evergreens (Bean and Shipek 1978:551).

Cahuilla. The Cahuilla are generally divided into three groups: Desert Cahuilla, Mountain Cahuilla, and Western (or Pass) Cahuilla (Kroeber 1925; Bean and Smith 1978). The term Western Cahuilla is preferred over Pass Cahuilla because this group is not confined to the San Geronimo Pass area. The distinctions are believed to be primarily geographic, although linguistic and cultural differences may have existed to varying degrees (Strong 1929). Cahuilla territory lies within the geographic center of Southern California and the Cocopa-Maricopa Trail, a major prehistoric trade route, ran through it. The first written accounts of the Cahuilla are attributed to mission fathers; later documentation was by Strong (1929), Bright (1998), and others.

History

In southern California, the historic era is generally divided into three periods: the Spanish or Mission Period (1769 to 1821), the Mexican or Rancho Period (1821 to 1848), and the American Period (1848 to present).

Spanish Period. The Spanish period (1769-1821) is represented by exploration of the region; establishment of the San Diego Presidio and missions at San Gabriel and San Luis Rey; and the introduction of livestock, agricultural goods, and European architecture and construction techniques. Spanish influence continued to some extent after 1821 due to the continued implementation of the mission system.

Mexican Period. The Mexican period (1821-1848) began with Mexican independence from Spain and continued until the end of the Mexican-American War (Cleland 1951). The Secularization Act of 1834 resulted in the transfer, through land grants (called ranchos) of large mission tracts to politically prominent individuals. Sixteen ranchos were granted in Riverside County. At that time, cattle ranching was a more substantial business than

agricultural activities, and trade in hides and tallow increased during the early portion of this period. Until the Gold Rush of 1849, livestock and horticulture dominated California's economy (Beattie and Beattie 1974).

American Period. The American Period, 1848–Present, began with the Treaty of Guadalupe Hidalgo. In 1850, California was accepted into the Union of the United States primarily due to the population increase created by the Gold Rush of 1849. The cattle industry reached its greatest prosperity during the first years of the American Period. Mexican Period land grants had created large pastoral estates in California, and demand for beef during the Gold Rush led to a cattle boom that lasted from 1849–1855. However, beginning about 1855, the demand for beef began to decline due to imports of sheep from New Mexico and cattle from the Mississippi and Missouri Valleys. When the beef market collapsed, many California ranchers lost their ranchos through foreclosure. A series of disastrous floods in 1861–1862, followed by a significant drought diminished the economic impact of local ranching. This decline combined with ubiquitous agricultural and real estate developments of the late 19th century, set the stage for diversified economic pursuits of the 20th century (Beattie and Beattie 1974; Cleland 1951).

Economic and ethnic diversification and growth have resulted in California's most visible 20th century hallmarks. Prior to World War II agriculture, oil, tourism, railroad, and film industries all flourished, and while the great the Great Depression of the 1930s slowed (and in many cases stopped) growth, these all remained important throughout the century. The wartime economy helped alleviate many causes of the Great Depression, and the subsequent years saw further diversification in which the aerospace and electronics industries emerged. During World War II, many people had relocated to California in support of the military industrial complex, and a large number remained post-war in search of employment and to start families. The subsequent population boom coincided with the greatest economic growth in the history of the state, and accompanied large-scale land subdivision, construction of bedroom communities, and development of a comprehensive freeway system and a state system of higher education (Lavender 1972). These factors have all helped reshape California's landscape, economy, and material culture.

Menifee. In 1880, Kentucky-born gold miner Luther Menifee Wilson discovered a substantial gold and quartz deposit eight miles south of Perris in what was then northern San Diego County, along present-day Murrieta Road. The discovery became widely known as the Menifee Quartz Lode, and it attracted many people to settle in the relatively barren region. The Menifee Mining District developed around the lode and subsequently included half a dozen mines. Wilson sold the mine to the Allen Gold Mining Company in 1889. A small, sparsely populated settlement associated with the mine became known as Menifee. By 1893, Menifee was made up of scattered farmsteads, a one-room schoolhouse, a general store that doubled as a post office, and a blacksmith shop. That same year, Menifee was also seriously considered to become the county seat of the newly formed Riverside County, receiving 459 votes among county delegates.

A nearby 3,000-acre property was purchased by Charles Cooper and investors from the Los Angeles Farmers and Merchants Bank in 1891, which for several years thereafter was used as a game hunting reserve named Quail Valley. Mining activity soon died down in the area

as it proved to be unprofitable and grain farming became the predominant industry. Menifee remained highly rural in character through the remainder of the nineteenth century and first decades of the twentieth century, with a few local families owning vast acreages for ranches and dry farming. In the 1920s the Quail Valley property was sold to investors who developed the Lake Elsinore Lodge, an enclave of recreational and residential facilities that included a club house, tennis courts, equestrian stables, a restaurant, a small store, and a gas station. In the 1947, this resort community would be renamed the Quail Valley Country Club. The greater community developed slowly. Electricity became widely available in 1946 in the Menifee area, and telephone service arrived in 1958. Occupancy remained so low that residents had to petition municipal authorities for such luxuries, as Menifee's small population didn't initially qualify for service (The Californian 1992; Martin and Bouris 2006:7; Sullivan 2004).

A catalyst for urban development arrived in the early 1960s, when Del Webb, a contractor and developer from Arizona, planned for a retirement residential community in the Menifee area called Sun City. After initially purchasing 14,000 acres of former ranch and farm lands for the development, Sun City was built on 1,200 acres with the remainder eventually being sold to future developers. The Sun City community was built as a four square-mile enclave complete with residences, retail stores, two golf courses, and two recreation centers. Soon after its completion and occupancy, it became its own Census Designated Place, separate from the unincorporated community of Menifee. Quail Valley, whose country club amenities were largely abandoned by the 1970s, was repurposed as a residential community adjacent to Menifee with many new residences and its own schools.

Local development picked up more steam in the 1980s and 1990s. In 1989, a real estate development firm, the Lusk Company, constructed a nearly 2,000-acre residential community around a 45-acre artificial lake and golf course called Menifee Lakes. The development, which also featured country club facilities, drew more middle-class families to settle in the Menifee area. Accompanying the development of Menifee Lakes was the construction of new parks, schools, and commercial areas. The establishment of the Menifee Valley Campus of Mt. San Jacinto College in 1990 further bolstered commercial activity and residency in the area. By 2005, the formerly rural farming settlement of Menifee had been transformed into a suburban bedroom community of more than 27,000 people.

As the local population grew, a movement for cityhood gained traction and the annexation of Sun City, Quail Valley, Romoland (a nearby ranching community developed in 1924), and other smaller communities on the peripheries of Menifee was contemplated. In June 2008, Menifee's residents voted with the local Chamber of Commerce to incorporate as Riverside County's twenty-sixth city. By October, the city was formally established and the surrounding communities had been incorporated into Menifee's city limits, bringing its total area to exceed fifty square miles and 70,000 residents. Today, the population has increased to approximately 102,527 residents (The California 1989; City of Menifee 2020; Los Angeles Times 1989; Love 2012; Martin and Bouris 2006:7; Menifee Buzz 2014; Sullivan 2004; U.S. Census Bureau 2020).

METHODS

This work was completed pursuant to the California Environmental Quality Act (CEQA), Public Resources Code (PRC) Chapter 2.6, Section 21083.2, and California Code of Regulations (CCR) Title 14, Chapter 3, Article 5, Section 15064.5. The pedestrian cultural resources survey is intended to locate and document previously recorded or new cultural resources, including archaeological sites, features, isolates, and historic-period buildings, that exceed 45 years in age within defined project boundaries. The project site was examined using 10 to 15 meter transect intervals.

The study is intended to determine whether cultural resources are located within the given project boundaries, whether any cultural resources are significant pursuant to the above-referenced regulations and standards, and to develop specific mitigation measures that will address potential impacts to existing or potential resources. Tasks pursued to achieve that end include:

- Sacred Lands File search through the Native American Heritage Commission, and communications with recommended tribes and individuals;
- Cultural resources records search through the Eastern Information Center (EIC) to review any previous studies conducted and the resulting cultural resources recorded within one half-mile of the project site boundaries;
- Systematic pedestrian survey of the entire proposed project site.

Research

Records Search. Prior to fieldwork, a records search request was submitted to the EIC. The records search included a review of all prerecorded historic-period and prehistoric cultural resources, as well as a review of known cultural resources surveys and excavation reports generated from projects located within one half-mile of the project site. In addition, a review was conducted of the National Register of Historic Places (National Register), the California Register of Historical Resources (California Register), and documents and inventories from the California Office of Historic Preservation (OHP) including the lists of California Historical Landmarks, California Points of Historical Interest, Listing of National Register Properties, and the Inventory of Historic Structures.

Field Survey

An intensive-level cultural resources field survey of the project site was conducted on July 11, 2022. The survey was conducted by walking parallel transects spaced approximately 10-15 meters apart across 100 percent of the accessible project site. Digital photographs were taken at various points within the project boundaries and all soil exposures were carefully examined for evidence of cultural resources.

RESULTS

Research

Records Search. A cultural resource records search was conducted by the EIC at the University of California, Riverside. The records search revealed that 24 cultural resource studies have taken place resulting in the recording of three cultural resources within the

research radius. Of these studies one assessed the project site for cultural resources. This study was updated twice resulting in no cultural resources previously identified within the project boundaries. Tables A and B summarize the disposition of previous studies and cultural resources within one half-mile of the project site. A comprehensive records search bibliography is provided as Appendix D.

Table A. Cultural Resource Studies Summary

USGS 7.5-Minute Quad	Previous Studies
<i>Romoland, California (1979)</i>	RI-527, 592, 759, 760, 802, 933, 1237, 2468, 2805, 3189, 4404, 4903, 4974, 5241, 6018, 6470*, 6581**, 6582**, 6888, 8101, 8176, 9093, 9247, 10387

*Previously assessed project site for cultural resources

**Updated previous assessment of project site in 2006 and 2005, respectively

Table B. Cultural Resources Summary

Primary No.	Period	Approximate Distance from Project Site/Description
P-33-1078	Prehistoric	0.25 Mile SE/Bedrock Milling Feature
P-33-15354	Historic	0.25 Mile S/Historic-Period Water Conveyance

Additional Land Use Research. A review of aerial photos and assessor documents indicate that the majority of the project site has never been cultivated or developed. It contains a rural residential complex consisting of two modern residences and three ancillary buildings in the northeast corner that was developed between 2002 and 2018 (United States Department of Agriculture 1966, 1967, 1985, 2002, 2016, 2018).

Predictive Modeling. Cultural resources recorded in this portion of Riverside County indicate that historic agricultural and residential developments are locally common. Additionally, prehistoric use of bedrock for milling stations and lithic scatters and fire affected rock have also been identified in the general area. These resources are commonly associated with vegetal (particularly seed) processing, chipped stone tool manufacture, trade, and cooking. As a result the field survey emphasized careful inspection for artifacts and features associated with historic agricultural and residential use, and of suitable rock outcrops and soil exposures for the presence of related features and artifacts.

Field Survey

During the field survey, BCR Consulting archaeologists carefully inspected the project site for evidence of cultural resources, using the methods described above. Representatives from Pechanga Band of Indians and Soboba Band of Luiseno Indians accompanied BCR Consulting archaeologists during the pedestrian field survey. Ground visibility averaged approximately 70 percent within the project site boundaries. Sediment included yellowish-brown, dry, semi-compact, sandy silt with minimal gravel content. Several boulders have been pushed into a pile in the southeast corner of the project site. These were carefully checked for prehistoric grinding slicks, which were not present. The project site has been subject to mechanical clearing and discing for weed abatement. It contains a rural residential complex consisting of two modern residences and three modern ancillary buildings in the northeast corner. This complex is not historic in age (i.e. 45 or more years old) and as such does not warrant further consideration. No cultural materials (including

historic-period or prehistoric archaeological resources or historic-period built environment resources) were identified within the project site.

RECOMMENDATIONS

BCR Consulting conducted a Cultural Resources Assessment of the proposed CADO project, pursuant to CEQA. During the field survey, BCR Consulting personnel did not identify any cultural resources (including architectural historical resources, prehistoric archaeological resources, or historic archaeological resources) within the project site. The project site has been subject to severe disturbances associated with mechanical clearing, discing, and construction and development and use of the modern rural residential complex. These factors confer low sensitivity for significant buried resources within the project site. However, while the current study has not indicated sensitivity for unknown cultural resources within the project boundaries, ground disturbing activities always have the potential to reveal buried deposits not observed on the surface. Prior to the initiation of ground-disturbing activities, field personnel should be alerted to the possibility of buried prehistoric or historic cultural deposits. In the event that field personnel encounter buried cultural materials, work in the immediate vicinity of the find should cease and a qualified archaeologist should be retained to assess the significance of the find. The qualified archaeologist would have the authority to stop or divert construction excavation as necessary. If the qualified archaeologist finds that any cultural resources present meet eligibility requirements for listing on the California Register or the National Register, plans for the treatment, evaluation, and mitigation of impacts to the find will need to be developed. Prehistoric or historic cultural materials that may be encountered during ground-disturbing activities include:

- prehistoric flaked-stone artifacts and debitage (waste material), consisting of obsidian, basalt, and or cryptocrystalline silicates;
- groundstone artifacts, including mortars, pestles, and grinding slabs;
- dark, greasy soil that may be associated with charcoal, ash, bone, shell, flaked stone, groundstone, and fire affected rocks;
- human remains;
- historic-period artifacts such as glass bottles and fragments, cans, nails, ceramic and pottery fragments, and other metal objects;
- historic-period structural or building foundations, walkways, cisterns, pipes, privies, and other structural elements.

Findings were negative during the Sacred Lands File search with the NAHC. The City will initiate Assembly Bill (AB) 52 Native American Consultation for the project. Since the City will initiate and carry out the required Native American Consultation, the results of the consultation are not provided in this report. However, this report may be used during the consultation process, and BCR Consulting staff is available to answer questions and address concerns as necessary. BCR Consulting sent notifications to local tribes listed by the NAHC to discern whether tribes were aware of resources within the project site boundaries. Representatives from Pechanga Band of Indians and Soboba Band of Luiseno Indians accompanied BCR Consulting archaeologists during the pedestrian field survey. The results of tribal correspondence is provided in Appendix A.

According to CEQA Guidelines, projects subject to CEQA must determine whether the project would “directly or indirectly destroy a unique paleontological resource”. The Paleontological Overview provided in Appendix B has recommended that:


The geologic units underlying the project area are mapped as middle to early Pleistocene alluvial gravel, silt, sand, and clay, and as Cretaceous grandiorite and tonalite (Morton, Bovard, and Morton 2003). While the grandiorite and tonalite units are considered to be of low paleontological value, the Pleistocene alluvial units are considered highly paleontologically sensitive. Western Science Center does not have localities within the project area or within a 1 mile radius, but does have numerous localities in similarly mapped Pleistocene units in the City of Menifee.

Any fossils recovered from the Menifee Industrial Warehouse Project would be scientifically significant. Excavation activity associated with development of the project area would impact the paleontologically sensitive Pleistocene units and it is the recommendation of the Western Science Center that a paleontological resource mitigation program be put in place to monitor, salvage, and curate any recovered fossils associated with the current study area.

If human remains are encountered during the undertaking, State Health and Safety Code Section 7050.5 states that no further disturbance shall occur until the County Coroner has made a determination of origin and disposition pursuant to Public Resources Code Section 5097.98. The County Coroner must be notified of the find immediately. If the remains are determined to be prehistoric, the Coroner will notify the Native American Heritage Commission (NAHC), which will determine and notify a Most Likely Descendant (MLD). With the permission of the landowner or his/her authorized representative, the MLD may inspect the site of the discovery. The MLD shall complete the inspection within 48 hours of notification by the NAHC.

CERTIFICATION

I hereby certify that the statements furnished above and in the attached exhibits present the data and information required for this archaeological report, and that the facts, statements, and information presented are true and correct to the best of my knowledge and belief.

Date: July 21, 2022	
	David Brunzell
Authorized Signature	Printed Name
County Registration Number: 154	

REFERENCES

- Basgall, Mark E., and M.C. Hall
1994 Perspectives on the Early Holocene Archaeological Record of the Mojave Desert. In *Kelso Conference Papers 1987-1992*, edited by G.D. Everson and J.S. Schneider, pp. 63-81. California State University, Bakersfield, Museum of Anthropology, Occasional Papers in Anthropology 4.
- Bean, Lowell John, and Charles R. Smith
1978 Cahuilla. In *California* (pp. 566-570), edited by R.F. Heizer. Handbook of North American Indians, Vol. 8, W.C. Sturtevant, general editor, Smithsonian Institution, Washington, D.C.
- Bean, Lowell John, and Florence C. Shipek
1978 Luiseño in *California* (pp. 550-563), edited by R.F. Heizer. Handbook of North American Indians, Vol. 8, W.C. Sturtevant, general editor, Smithsonian Institution, Washington, D.C.
- Bean, Lowell John and Katherine Siva Saubel
1972 *Temalpakh*. Malki Museum Press. Banning, California.
- Beattie, George W., and Helen P. Beattie
1974 *Heritage of the Valley: San Bernardino's First Century*. Biobooks: Oakland.
- Beck, Warren A., and Ynez D. Haase
1974 *Historical Atlas of California*. Oklahoma City: University of Oklahoma Press.
- Bedwell, S.F.
1973 *Fort Rock Basin: Prehistory and Environment*. University of Oregon Books, Eugene.
- Bright, William
1998 *California Place Names, The Origin and Etymology of Current Geographical Names*. University of California Press, Berkeley, California.
- The Californian [Temecula, California]
1989 "First dwellers moved in at 'new town' of Meniffee." Online newspaper archive
- City of Meniffee
2020 "History, History of Meniffee Roads." Electronic Document. Accessed 11/30/20.
<https://cityofmeniffee.us/85/History>.
- Cleland, Robert Glass
1951 *The Cattle on a Thousand Hills—Southern California, 1850-80*. San Marino, California: Huntington Library.
- Gifford, Edward W.
1918 Clans and Moieties in Southern California. *University of California Publications in American Archaeology and Anthropology* 14(22)155-219.

- Jaeger, Edmund C., and Arthur C. Smith
1971 *Introduction to the Natural History of Southern California*. California Natural History Guides: 13. Los Angeles: University of California Press.
- Kennedy, M.P.
1977 Regency and Character of Faulting Along the Elsinore Fault Zone in Southern Riverside County, California. CDMA Special Report 131.
- Kroeber, Alfred L.
1925 *Handbook of the Indians of California*. Bureau of American Ethnology Bulletin No. 78. Washington D.C.: Smithsonian Institution. New York: Dover Publications.
- Lavender, David
1972 *California: Land of New Beginnings*. Harper and Row. New York.
- Lightfoot, Kent G. and Otis Parrish
2009 *California Indians and Their Environment*. University of California, Berkeley and Los Angeles.
- Los Angeles Times [Los Angeles, California]
1989 "Menifee Lakes Country Club considered a top attraction." Online newspaper archive (Newspaper.com). Accessed 12/1/20.
- Love, Carl
2012 "Preserving memories of Menifee's past." *Press-Enterprise*. Electronic Document. Accessed 11/30/20. <https://www.pe.com/2012/01/07/preserving-memories-of-menifee8217s-past/>.
- Martin, Elinor and Betty Bouris
2006 *Images of America: Menifee Valley*. Arcadia Publishing: Charleston.
- McGuire, K.R., and M.C. Hall
1988 *The Archaeology of Tiefert Basin, Fort Irwin, San Bernardino County, California*. Report Prepared by Far Western Anthropological Research Group, Inc., Davis, California, for the U.S. Army Corps of Engineers, Los Angeles District.
- Menifee Buzz
2014 "Menifee has a history." Electronic Document. Accessed 11/30/20. <http://www.menifeebuzz.com/news/item/1035-menifee-has-a-history>.
- Morton, Douglas M.
2003 *Geologic Map of the Romoland 7.5' Quadrangle, Riverside County, California*. United States Geological Survey. Reston, Virginia.
- Oxendine, Joan
1983 *The Luiseño Village During the Late Prehistoric Era*. Unpublished PhD Dissertation, Department of Anthropology, University of California, Riverside.

Riverside County Assessor

2022 *Riverside County Assessor-County Clerk-Recorder*. Electronic Database. Accessed 7/18/2022. <https://ca-riverside-acr.publicaccessnow.com/Search.aspx?s=384130028&pg=1&g=-1&moduleId=478>

Rogers, M.J.

1939 *Early Lithic Industries of the Lower Basin of the Colorado River and Adjacent Desert Areas*. San Diego Museum Papers No. 3.

Rogers, T.H.

1965 Geologic Map of California, Santa Ana Sheet, CDMG, Scale 1:250,000.

Schroeder, Albert H.

1953 A Few Sites in Moapa Valley, Nevada. *The Masterkey* 27(1):18-24, (2):62-68

1961 *The Archaeological Excavations at Willow Beach, AZ, 1950*. Utah Anthro. Papers 50.

Schroth, Adella Beverly

1994 *The Pinto Point Controversy in the Western United States*. Unpublished PhD Dissertation, University of California, Riverside.

Shutler, Richard, Jr.

1961 *Lost City, Pueblo Grande de Nevada*. Nev. State Museum Anthropological Papers 5.

1968 The Great Basin Archaic. In *Prehistory in the Western United States. Contributions in Anthropology* 1(3):24-26. Edited by C. Irwin-Williams, Eastern New Mexico University.

Sparkman, Philip S.

1908 The Culture of the Luiseño Indians. *University of California Publications in American Archaeology and Ethnology* 8(4). University of California, Berkeley.

Strong, William Duncan

1929 Aboriginal Society in Southern California. *University of California Publications in American Archaeology and Ethnology* 26(1):1-358.

Sullivan, Susan

2004 "Slow pace, fast growth in Menifee." *Los Angeles Times*. Electronic Document. Accessed 11/30/20. <https://www.latimes.com/archives/la-xpm-2004-may-30-re-guide30-story.html>.

Sutton, Mark Q.

1996 The Current Status of Archaeological Research in the Mojave Desert. *Journal of California and Great Basin Anthropology* 18(2):221-257.

U.S. Census Bureau

2020 *Quick Facts Menifee City, California*. Electronic Document: <https://www.census.gov/quickfacts/menifeecitycalifornia>. Accessed 11/20/22.

United States Department of Agriculture

1966 Aerial Photographs of Riverside County. Electronic Document: historicaerials.com. Accessed multiple dates.

1967 Aerial Photographs of Riverside County. Electronic Document: historicaerials.com. Accessed multiple dates.

1985 Aerial Photographs of Riverside County. Electronic Document: historicaerials.com. Accessed multiple dates.

2002 Aerial Photographs of Riverside County. Electronic Document: historicaerials.com. Accessed multiple dates.

2016 Aerial Photographs of Riverside County. Electronic Document: historicaerials.com. Accessed multiple dates.

2018 Aerial Photographs of Riverside County. Electronic Document: historicaerials.com. Accessed multiple dates.

U.S. Geological Survey

1979 *Romoland, California* 7.5-minute topographic quadrangle map

Wallace, William J.

1955 Prehistoric Cultural Development in the Southern California Deserts. *American Antiquity* 28(2):172-180.

Warren, Claude N.

1986 The Desert Region. In *California Archaeology*, by M. Moratto with contributions by D.A. Fredrickson, C. Raven, and C.N. Warren, pp. 339–430. Academic Press, Orlando, Florida.

Warren, Claude N., and R.H. Crabtree

1986 The Prehistory of the Southwestern Great Basin. In *Handbook of the North American Indians, Vol. 11, Great Basin*, edited by W.L. d'Azevedo, pp.183-193. W.C. Sturtevant, General Editor. Smithsonian Institution, Washington D.C.

Williams, Patricia, Leah Messinger, Sarah Johnson

2008 *Habitats Alive! An Ecological Guide to California's Diverse Habitats*. California Institute for Biodiversity, Claremont, California.

Yohe, Robert M., II

1992 *A Reevaluation of Western Great Basin Cultural Chronology and Evidence for the Timing of the Introduction of the Bow and Arrow to Eastern California Based on New Excavations at the Rose Spring Site (CA-INY-372)*. Unpublished PhD Dissertation, University of California, Riverside.

APPENDIX A

**NATIVE AMERICAN HERITAGE COMMISSION SACRED LANDS FILE SEARCH AND
TRIBAL SCOPING CORRESPONDENCE**

NATIVE AMERICAN HERITAGE COMMISSION

May 27, 2022

David Brunzell
BCR Consulting, LLC

Via Email to: bcrllc2008@gmail.com

Re: Menifee Industrial Warehouse (KIM2207) Project, Riverside County

Dear Mr. Brunzell:

A record search of the Native American Heritage Commission (NAHC) Sacred Lands File (SLF) was completed for the information you have submitted for the above referenced project. The results were negative. However, the absence of specific site information in the SLF does not indicate the absence of cultural resources in any project area. Other sources of cultural resources should also be contacted for information regarding known and recorded sites.

Attached is a list of Native American tribes who may also have knowledge of cultural resources in the project area. This list should provide a starting place in locating areas of potential adverse impact within the proposed project area. I suggest you contact all of those indicated; if they cannot supply information, they might recommend others with specific knowledge. By contacting all those listed, your organization will be better able to respond to claims of failure to consult with the appropriate tribe. If a response has not been received within two weeks of notification, the Commission requests that you follow-up with a telephone call or email to ensure that the project information has been received.

If you receive notification of change of addresses and phone numbers from tribes, please notify me. With your assistance, we can assure that our lists contain current information.

If you have any questions or need additional information, please contact me at my email address: Cody.Campagne@nahc.ca.gov.

Sincerely,

Cody Campagne

Cody Campagne
Cultural Resources Analyst

Attachment



CHAIRPERSON
Laura Miranda
Luiseño

VICE CHAIRPERSON
Reginald Pagaling
Chumash

PARLIAMENTARIAN
Russell Attebery
Karuk

SECRETARY
Sara Dutschke
Miwok

COMMISSIONER
William Hungary
Paiute/White Mountain
Apache

COMMISSIONER
Isaac Bojorquez
Ohlone-Costanoan

COMMISSIONER
Buffy McQuillen
Yokayo Pomo, Yuki,
Nomlaki

COMMISSIONER
Wayne Nelson
Luiseño

COMMISSIONER
Stanley Rodriguez
Kumeyaay

EXECUTIVE SECRETARY
Raymond C. Hitchcock
Miwok/Nisenan

NAHC HEADQUARTERS
1550 Harbor Boulevard
Suite 100
West Sacramento,
California 95691
(916) 373-3710
nahc@nahc.ca.gov
NAHC.ca.gov

**Native American Heritage Commission
Native American Contact List
Riverside County
5/27/2022**

**Agua Caliente Band of Cahuilla
Indians**

Jeff Grubbe, Chairperson
5401 Dinah Shore Drive
Palm Springs, CA, 92264
Phone: (760) 699 - 6800
Fax: (760) 699-6919
Cahuilla

**Los Coyotes Band of Cahuilla
and Cupeño Indians**

Ray Chapparosa, Chairperson
P.O. Box 189
Warner Springs, CA, 92086-0189
Phone: (760) 782 - 0711
Fax: (760) 782-0712
Cahuilla

**Agua Caliente Band of Cahuilla
Indians**

Patricia Garcia-Plotkin, Director
5401 Dinah Shore Drive
Palm Springs, CA, 92264
Phone: (760) 699 - 6907
Fax: (760) 699-6924
ACBCI-THPO@aguacaliente.net
Cahuilla

**Morongo Band of Mission
Indians**

Ann Brierty, THPO
12700 Pumarra Road
Banning, CA, 92220
Phone: (951) 755 - 5259
Fax: (951) 572-6004
abrierty@morongo-nsn.gov
Cahuilla
Serrano

**Augustine Band of Cahuilla
Mission Indians**

Amanda Vance, Chairperson
P.O. Box 846
Coachella, CA, 92236
Phone: (760) 398 - 4722
Fax: (760) 369-7161
hhaines@augustinetribe.com
Cahuilla

**Morongo Band of Mission
Indians**

Robert Martin, Chairperson
12700 Pumarra Road
Banning, CA, 92220
Phone: (951) 755 - 5110
Fax: (951) 755-5177
abrierty@morongo-nsn.gov
Cahuilla
Serrano

**Cabazon Band of Mission
Indians**

Doug Welmas, Chairperson
84-245 Indio Springs Parkway
Indio, CA, 92203
Phone: (760) 342 - 2593
Fax: (760) 347-7880
jstapp@cabazonindians-nsn.gov
Cahuilla

Pala Band of Mission Indians

Shasta Gaughen, Tribal Historic
Preservation Officer
PMB 50, 35008 Pala Temecula
Rd.
Pala, CA, 92059
Phone: (760) 891 - 3515
Fax: (760) 742-3189
sgaughen@palatribe.com
Cupeno
Luiseno

Cahuilla Band of Indians

Daniel Salgado, Chairperson
52701 U.S. Highway 371
Anza, CA, 92539
Phone: (951) 763 - 5549
Fax: (951) 763-2808
Chairman@cahuilla.net
Cahuilla

Pechanga Band of Indians

Paul Macarro, Cultural Resources
Coordinator
P.O. Box 1477
Temecula, CA, 92593
Phone: (951) 770 - 6306
Fax: (951) 506-9491
pmacarro@pechanga-nsn.gov
Luiseno

This list is current only as of the date of this document. Distribution of this list does not relieve any person of statutory responsibility as defined in Section 7050.5 of the Health and Safety Code, Section 5097.94 of the Public Resource Section 5097.98 of the Public Resources Code.

This list is only applicable for contacting local Native Americans with regard to cultural resources assessment for the proposed Menifee Industrial Warehouse (KIM2207) Project, Riverside County.

**Native American Heritage Commission
Native American Contact List
Riverside County
5/27/2022**

Pechanga Band of Indians

Mark Macarro, Chairperson
P.O. Box 1477 Luiseno
Temecula, CA, 92593
Phone: (951) 770 - 6000
Fax: (951) 695-1778
epreston@pechanga-nsn.gov

Rincon Band of Luiseno Indians

Bo Mazzetti, Chairperson
One Government Center Lane Luiseno
Valley Center, CA, 92082
Phone: (760) 749 - 1051
Fax: (760) 749-5144
bomazzetti@aol.com

***Quechan Tribe of the Fort Yuma
Reservation***

Jill McCormick, Historic
Preservation Officer
P.O. Box 1899 Quechan
Yuma, AZ, 85366
Phone: (760) 572 - 2423
historicpreservation@quechantrib
e.com

***Santa Rosa Band of Cahuilla
Indians***

Lovina Redner, Tribal Chair
P.O. Box 391820 Cahuilla
Anza, CA, 92539
Phone: (951) 659 - 2700
Fax: (951) 659-2228
lsaul@santarosa-nsn.gov

***Quechan Tribe of the Fort Yuma
Reservation***

Manfred Scott, Acting Chairman
Kw'ts'an Cultural Committee
P.O. Box 1899 Quechan
Yuma, AZ, 85366
Phone: (928) 750 - 2516
scottmanfred@yahoo.com

***Soboba Band of Luiseno
Indians***

Joseph Ontiveros, Cultural
Resource Department
P.O. BOX 487 Cahuilla
San Jacinto, CA, 92581 Luiseno
Phone: (951) 663 - 5279
Fax: (951) 654-4198
jontiveros@soboba-nsn.gov

Ramona Band of Cahuilla

Joseph Hamilton, Chairperson
P.O. Box 391670 Cahuilla
Anza, CA, 92539
Phone: (951) 763 - 4105
Fax: (951) 763-4325
admin@ramona-nsn.gov

***Soboba Band of Luiseno
Indians***

Isaiah Vivanco, Chairperson
P. O. Box 487 Cahuilla
San Jacinto, CA, 92581 Luiseno
Phone: (951) 654 - 5544
Fax: (951) 654-4198
ivivanco@soboba-nsn.gov

Ramona Band of Cahuilla

John Gomez, Environmental
Coordinator
P. O. Box 391670 Cahuilla
Anza, CA, 92539
Phone: (951) 763 - 4105
Fax: (951) 763-4325
jgomez@ramona-nsn.gov

***Torres-Martinez Desert Cahuilla
Indians***

Cultural Committee,
P.O. Box 1160 Cahuilla
Thermal, CA, 92274
Phone: (760) 397 - 0300
Fax: (760) 397-8146
Cultural-
Committee@torresmartinez-
nsn.gov

Rincon Band of Luiseno Indians

Cheryl Madrigal, Tribal Historic
Preservation Officer
One Government Center Lane Luiseno
Valley Center, CA, 92082
Phone: (760) 297 - 2635
crd@rincon-nsn.gov

This list is current only as of the date of this document. Distribution of this list does not relieve any person of statutory responsibility as defined in Section 7050.5 of the Health and Safety Code, Section 5097.94 of the Public Resource Section 5097.98 of the Public Resources Code.

This list is only applicable for contacting local Native Americans with regard to cultural resources assessment for the proposed Menifee Industrial Warehouse (KIM2207) Project, Riverside County.

Tribal Scoping Request for CADO Menifee Industrial Warehouse Project

From: David Brunzell (david.brunzell@yahoo.com)

To: david.brunzell@yahoo.com

Date: Monday, June 6, 2022 at 05:15 PM PDT

Dear Tribal Representatives,

This is an invitation to comment on a proposed development project at locations with which you have Tribal cultural affiliation. The purpose of the Tribal Scoping is to ensure the protection of Native American cultural resources on which the proposed project may have an impact. In the Tribal Scoping process, early communication is encouraged in order to provide for full and reasonable public input from Native American Groups and Individuals, as consulting parties, on potential effect of the development project, and to avoid costly delays. Further, we understand that much of the content of the correspondence will be confidential and will include, but not be limited to, the relationship of proposed project details to Native American Cultural Historic Properties, such as burial sites, known or unknown, architectural features and artifacts, ceremonial sites, sacred shrines, and cultural landscapes.

The proposed project is located in Section 17 of Township 5 South, Range 3 West, San Bernardino Baseline and Meridian. The property is depicted on the Romoland, (1979), California 7.5-minute USGS topographic quadrangle (see attached map and aerial photo) in the City of Menifee. The project will consist of construction of a 700,037 square foot warehouse/ industrial building on a 36.8-acre site. There will be two points of access on Byers Road and two points of access on Wheat Street.

If you know of any cultural resources in the vicinity that may be of religious and/or cultural significance to your community or if you would like more information, please contact me at 909-525-7078 or david.brunzell@yahoo.com. Correspondence can also be sent to BCR Consulting LLC, Attn: David Brunzell, 505 West 8th Street, Claremont, California 91711. I request a response by July 10, 2022. If you require more time, please let me know. Please note that this request is for information purposes only and is not intended as government consultation. Thank you for your involvement in this process.

Sincerely,

David Brunzell
Principal Investigator/Archaeologist

BCR Consulting LLC

U.S. Small Business Administration (SBA) Member

505 West 8th Street
Claremont, California 91711
909-525-7078

www.bcrconsulting.net



KIM2207_Fig1.pdf
1.2MB



CADO Project Aerial Photo.pdf
349.8kB



TRIBAL HISTORIC PRESERVATION OFFICE
PALA BAND OF MISSION INDIANS
PMB 50, 35008 Pala Temecula Road | Pala, CA 92059
Phone 760-891-3510 | www.palatribe.com

July 20, 2022

David Brunzell
BCR Consulting LLC
505 West 8th Street
Claremont, CA 91711

Re: Menifee Industrial Warehouse Project

Dear David Brunzell:

The Pala Band of Mission Indians Tribal Historic Preservation Office has received your notification of the project referenced above. This letter constitutes our response on behalf of Robert Smith, Tribal Chairman.

We have consulted our maps and determined that the project as described is not within the boundaries of the recognized Pala Indian Reservation. The project is also beyond the boundaries of the territory that the tribe considers its Traditional Use Area (TUA). Therefore, we have no objection to the continuation of project activities as currently planned and we defer to the wishes of Tribes in closer proximity to the project area.

We appreciate involvement with your initiative and look forward to working with you on future efforts. If you have questions or need additional information, please do not hesitate to contact Alexis Wallick by telephone at 760-891-3537 or by e-mail at awallick@palatribe.com.

Sincerely,

A handwritten signature in black ink that reads "Shasta C. Gaughen". The signature is written in a cursive, flowing style.

Shasta C. Gaughen, PhD
Tribal Historic Preservation Officer
Pala Band of Mission Indians

ATTENTION: THE PALA TRIBAL HISTORIC PRESERVATION OFFICE IS RESPONSIBLE FOR ALL REQUESTS FOR CONSULTATION. PLEASE ADDRESS CORRESPONDENCE TO **SHASTA C. GAUGHEN** AT THE ABOVE ADDRESS. IT IS NOT NECESSARY TO ALSO SEND NOTICES TO PALA TRIBAL CHAIRMAN ROBERT SMITH.



PECHANGA CULTURAL RESOURCES
Temecula Band of Luiseño Mission Indians

Post Office, Box 2183 • Temecula, CA 92593
Telephone (951) 770-6300 • Fax (951) 506-9491

June 17, 2022

VIA E-Mail and USPS

David Brunzell
Principal Investigator/Archaeologist
BCR Consulting LLC
505 West 8th Street
Claremont, CA. 91511
909-525-7078

RE: Request for Information for Capstone Industrial PLN 21-0370 (CADO) Menifee Industrial Project, City of Menifee, Riverside County, California.

Dear Mr. Brunzell,

The Pechanga Band of Indians ("the Tribe") appreciates your request for information regarding the above referenced Project. After reviewing the provided maps and our internal documents, we have determined that the Project area is not within Reservation land's, although it is located in the heart of Our Ancestral Territory. At this time, we are interested in participating in this Project based upon our 'Ayékwish/Traditional Knowledge of the area, its location surrounded by three Traditional Cultural Properties, the Project's .62 of-a-mile proximity to the San Jacinto River (which runs near several Ancestral Village complexes), and this Project is 3.60 miles away from Pechanga Reservation Trust Land's in the Meadowbrook-area. Further, because of this project's proximity to multiple known Ancestral-remains and through extensive previously recorded sites within this Project's vicinity the Tribe therefore, is interested in participating in this Project. The Pechanga Tribe believes that the possibility of recovering subsurface resources during ground-disturbing activities for this Project is extremely high.

The Tribe is dedicated to providing comprehensive cultural information to you and your firm for inclusion in the archaeological study as well as to the Lead Agency for CEQA review. At this time, the Tribe requests the following so we may continue the consultation process and to provide adequate and appropriate recommendations for the Project:

- 1) Notification once the Project begins the entitlement process, if it has not already;
- 2) Copies of all applicable archaeological reports, site records, proposed grading plans and environmental documents (EA/IS/MND/EIR, etc);
- 3) Government-to-government consultation with the Lead Agency; and
- 4) The Tribe believes that monitoring by a Riverside County qualified archaeologist and a professional Pechanga Tribal Monitor may be required during earthmoving

Chairperson:
Neal Ibanez

Vice Chairperson:
Bridgett Barcello

Committee Members:
Darlene Miranda
Richard B. Searce, III
Robert Villalobos
Shevon Torres
Juan Rodriguez

Director:
Gary DuBois

Coordinator:
Paul Macarro

Cultural Analyst:
Tuba Ebru Ozdil

Planning Specialist:
Molly Escobar


activities. Therefore, the Tribe reserves its right to make additional comments and recommendations once the environmental documents have been received and fully reviewed.

- 5) In the event that subsurface cultural resources are identified, the Tribe requests consultation with the Project proponent and Lead Agency regarding the treatment and disposition of all artifacts.

As a Sovereign governmental entity, the Tribe is entitled to appropriate and adequate government-to-government consultation regarding the proposed Project. We would like you and your client to know that the Tribe does not consider initial inquiry letters from project consultants to constitute appropriate government-to-government consultation, but rather tools to obtain further information about the Project area. Therefore, the Tribe reserves its rights to participate in the formal environmental review process, including government-to-government consultation with the Lead Agency, and requests to be included in all correspondence regarding this Project.

Please note that we are interested in participating in surveys within Luiseño Ancestral territory. Prior to conducting any surveys, please contact the Cultural Department to schedule specifics. If you have any additional questions or comments, please contact me at pmacarro@pechanga-nsn.gov or 951-770-6306.

Sincerely,



Paul E. Macarro
Cultural Coordinator
Pechanga Reservation

*Pechanga Cultural Resources • Temecula Band of Luiseño Mission Indians
Post Office Box 2183 • Temecula, CA 92592*

Sacred Is The Duty Trusted Unto Our Care And With Honor We Rise To The Need

Re: Pechanga Tribe Scoping Response to Capstone Industrial PLN 21-0370 (CADO)
Menifee Industrial Project

From: David Brunzell (david.brunzell@yahoo.com)

To: pmacarro@pechanga-nsn.gov

Cc: eozdil@pechanga-nsn.gov; mearp@pechanga-nsn.gov; jochoa@pechanga-nsn.gov

Date: Thursday, June 23, 2022 at 01:57 PM PDT

Hi Mr. Macarro,

Thanks for sending. We don't have records search or field survey results yet. Please let me know if you would like to send Pechanga monitors along on the survey and we'll accommodate that. Our report will go to the City and tribal scoping responses (including your letter) will be appended. I expect the report to make it's way to you during AB52 consultation with the City. Please let me know if you would like us to send the report to you as well.

Thanks,

David Brunzell
Principal Investigator/Archaeologist

BCR Consulting LLC

U.S. Small Business Administration (SBA) Member

505 West 8th Street

Claremont, California 91711

909-525-7078

www.bcrconsulting.net

On Tuesday, June 21, 2022 at 04:58:50 PM PDT, Paul Macarro <pmacarro@pechanga-nsn.gov> wrote:

Míiyu/Hello Mr. Brunzell,

We appreciate your outreach and the opportunity to respond to your Scoping Notice. Have an excellent week.

Lóoviqap/Thanks,

Paul E. Macarro

Cultural Coordinator

Pechanga Reservation

951-770-6306

RE: Tribal Scoping Request for CADO Menifee Industrial Warehouse Project

From: Quechan Historic Preservation Officer (historicpreservation@quechantribe.com)

To: david.brunzell@yahoo.com

Date: Tuesday, June 7, 2022 at 07:34 AM PDT

This email is to inform you that we have no comments on this project. We defer to the more local Tribes and support their decisions on the projects.

From: David Brunzell [mailto:david.brunzell@yahoo.com]
Sent: Monday, June 06, 2022 5:15 PM
To: David Brunzell
Subject: Tribal Scoping Request for CADO Menifee Industrial Warehouse Project

Dear Tribal Representatives,

This is an invitation to comment on a proposed development project at locations with which you have Tribal cultural affiliation. The purpose of the Tribal Scoping is to ensure the protection of Native American cultural resources on which the proposed project may have an impact. In the Tribal Scoping process, early communication is encouraged in order to provide for full and reasonable public input from Native American Groups and Individuals, as consulting parties, on potential effect of the development project, and to avoid costly delays. Further, we understand that much of the content of the correspondence will be confidential and will include, but not be limited to, the relationship of proposed project details to Native American Cultural Historic Properties, such as burial sites, known or unknown, architectural features and artifacts, ceremonial sites, sacred shrines, and cultural landscapes.

The proposed project is located in Section 17 of Township 5 South, Range 3 West, San Bernardino Baseline and Meridian. The property is depicted on the Romoland, (1979), California 7.5-minute USGS topographic quadrangle (see attached map and aerial photo) in the City of Menifee. The project will consist of construction of a 700,037 square foot warehouse/ industrial building on a 36.8-acre site. There will be two points of access on Byers Road and two points of access on Wheat Street.

If you know of any cultural resources in the vicinity that may be of religious and/or cultural significance to your community or if you would like more information, please contact me at 909-525-7078 or david.brunzell@yahoo.com. Correspondence can also be sent to BCR Consulting LLC, Attn: David Brunzell, 505 West 8th Street, Claremont, California 91711. I request a response by July 10, 2022. If you require more time, please let me know. Please note that this request is for information purposes only and is not intended as government consultation. Thank you for your involvement in this process.

Sincerely,

David Brunzell
Principal Investigator/Archaeologist

BCR Consulting LLC
U.S. Small Business Administration (SBA) Member

505 West 8th Street

Claremont, California 91711

909-525-7078

www.bcrconsulting.net



Virus-free. www.avast.com

Rincon Band of Luiseño Indians

CULTURAL RESOURCES DEPARTMENT

One Government Center Lane | Valley Center | CA 92082
(760) 749-1092 | Fax: (760) 749-8901 | rincon-nsn.gov



July 18, 2022

Sent via email: david.brunzell@yahoo.com

Mr. David Brunzell
BCR Consulting, LLC
505 West 8th Street
Claremont, CA 91711

Re: Your Information Request for Native American cultural resources on or near CADO Menifee Industrial Warehouse Project, City of Menifee, California

Dear Mr. Brunzell,

This letter is written on behalf of the Rincon Band of Luiseño Indians (“Rincon Band” or “Tribe”), a federally recognized Indian tribe and sovereign government in response to your request for information pertaining to cultural and tribal cultural resources on the above referenced project. The identified location is within the Traditional Use Area of the Luiseño people. As such, the Rincon Band is traditionally and culturally affiliated to the project area.

After review of the provided documents and our internal information, the Rincon Band has no information on specific Tribal Cultural Resources (TCRs) or Traditional Cultural Properties (TCPs) within or surrounding the project area to share. However, this does not mean that none exist. The proposed project is in a culturally-sensitive area and the Tribe believes that the potential exists for cultural resources to be identified during further research and survey work. We recommend working closely with the Pechanga Band of Luiseño Indians as they may have pertinent information to provide. Please forward a final copy of the cultural resources study upon completion to the Rincon Band.

If you have additional questions or concerns, please do not hesitate to contact our office at your convenience at (760) 749 1092 ext. 323 or via electronic mail at cmadrigal@rincon-nsn.gov. Thank you for the opportunity to protect our cultural assets.

Sincerely,

A handwritten signature in blue ink, appearing to read "Cheryl Madrigal", is written over a light blue horizontal line.

Cheryl Madrigal
Tribal Historic Preservation Officer
Cultural Resources Manager

APPENDIX B
PALEONTOLOGICAL OVERVIEW



April 22nd, 2022

BCR Consulting, LLC
Joseph Orozco
505 W. 8th St.
Claremont, CA 91711

Dear Mr. Orozco,

This letter presents the results of a record search conducted for the Menifee Industrial Warehouse Project located in the City of Menifee, Riverside County, California. The project site is located north of Corsica Lane, south of Kuffel Road, east of Wheat Street, and west of Byers Road in the Township 5 South, Range 3 West, Section 17 on the *Romoland, CA* USGS 7.5 minute quadrangle.

The geologic units underlying the project area are mapped as middle to early Pleistocene alluvial gravel, silt, sand, and clay, and as Cretaceous grandiorite and tonalite (Morton, Bovard, and Morton 2003). While the grandiorite and tonalite units are considered to be of low paleontological value, the Pleistocene alluvial units are considered highly paleontologically sensitive. Western Science Center does not have localities within the project area or within a 1 mile radius, but does have numerous localities in similarly mapped Pleistocene units in the City of Menifee.

Any fossils recovered from the Menifee Industrial Warehouse Project would be scientifically significant. Excavation activity associated with development of the project area would impact the paleontologically sensitive Pleistocene units and it is the recommendation of the Western Science Center that a paleontological resource mitigation program be put in place to monitor, salvage, and curate any recovered fossils associated with the current study area.

If you have any questions, or would like further information, please feel free to contact me at bstoneburg@westerncentermuseum.org.

Sincerely,

A handwritten signature in black ink, appearing to read 'Brittney Stoneburg', written in a cursive style.

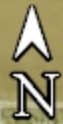
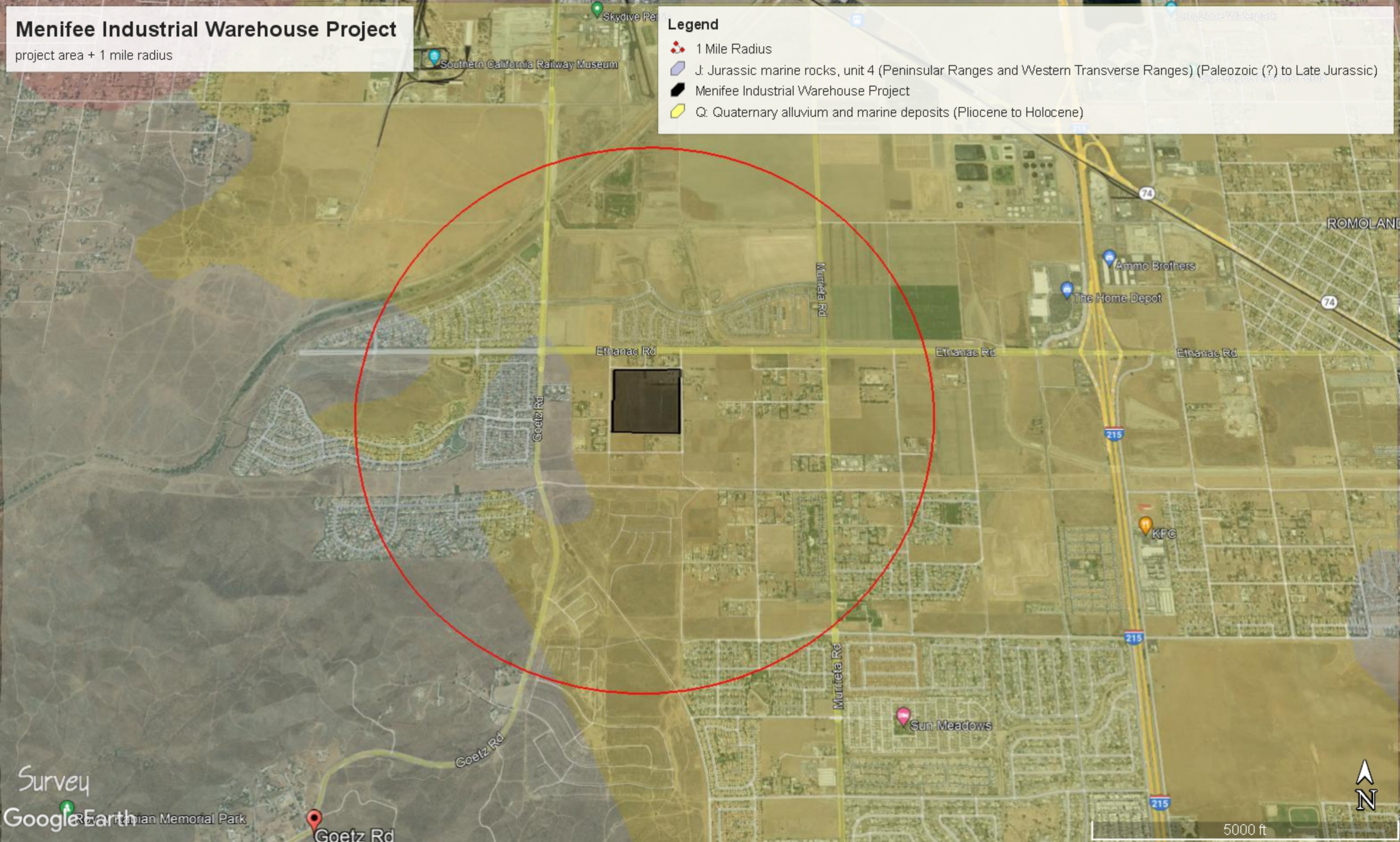
Brittney Elizabeth Stoneburg
Collections Technician

Menifee Industrial Warehouse Project

project area + 1 mile radius

Legend

- 1 Mile Radius
- J. Jurassic marine rocks, unit 4 (Peninsular Ranges and Western Transverse Ranges) (Paleozoic (?) to Late Jurassic)
- Menifee Industrial Warehouse Project
- Q. Quaternary alluvium and marine deposits (Pliocene to Holocene)



APPENDIX C
PHOTOGRAPHS



Photo 1: Overview



Photo 2: Overview

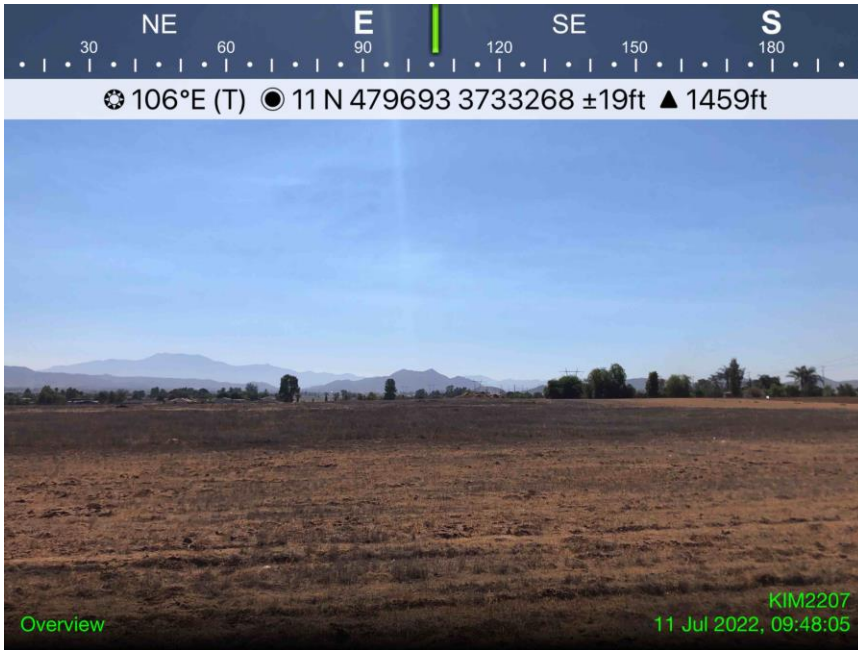


Photo 3: Overview



Photo 4: Overview



Photo 5: Modern Rural Residential Complex in NE Corner



Photo 6: Modern Rural Residential Complex in NE Corner

APPENDIX D
RECORDS SEARCH BIBLIOGRAPHY

Report List

Report No.	Other IDs	Year	Author(s)	Title	Affiliation	Resources
RI-00527	NADB-R - 1080566; Submitter - 401; Voided - MF-0458	1979	James P. Barker	Environmental Impact Evaluation: An Archaeological Assessment of Tentative Parcel 13405, South of Perris, Riverside County, California	Archaeological Research Unit, U.C. Riverside	
RI-00592	NADB-R - 1080634; Submitter - 476; Voided - MF-0518	1979	Ken Daly	Environmental Impact Evaluation: An Archaeological Assessment of Tentative Parcel 14619, Western Riverside County, California	Archaeological Research Unit, U.C. Riverside	
RI-00759	NADB-R - 1080811; Other - 776; Voided - MF-0681	1980	Stephen Bouscaren	Cultural Resources Assessment Parcel Map 15131, Riverside County	San Bernardino County Museum Association, Redlands, CA	
RI-00760	NADB-R - 1080812; Voided - MF-0682	1980	Stephen Bouscaren	Cultural Resources Assessment Parcel Map No. 15080 Riverside County	San Bernardino County Museum Association, Redlands, CA	
RI-00802	NADB-R - 1080854; Voided - MF-0723	1980	Larry L. Bowles and Jean A. Salpas	An Archaeological Assessment of Parcel 16265	Archaeological Consultant	
RI-00933	NADB-R - 1080985; Submitter - 527; Voided - MF-0847	1980	James D. Swenson	An Archaeological Assessment of Tentative Parcel 15656, Sun City Area of Riverside County, California	Archaeological Research Unit, U.C. Riverside	
RI-01237	NADB-R - 1081398; Voided - MF-1231	1980	Robert J. Wlodarski and John M. Foster	Cultural Resource Overview for The Devers Substation to Serrano Substation Transmission Route Alternatives Corridor Right-of-Way	Greenwood and Associates, Pacific Palisades, CA	33-001836, 33-001837
RI-02468	NADB-R - 1082961; Voided - MF-2700	1989	ROMANO, MELINDA	AN ARCHAEOLOGICAL ASSESSMENT OF APPROXIMATELY 160 ACRES OF LAND, PROPOSED BY THE GARY COOK CORPORATION, LOCATED SOUTH OF THE CITY OF PERRIS, RIVERSIDE COUNTY, CALIFORNIA	HATHEWAY AND MCKENNA	
RI-02805	NADB-R - 1083412; Voided - MF-3006	1990	DROVER, CHRISTOPHER E.	AN ARCHAEOLOGICAL ASSESSMENT OF TENTATIVE TRACT 25316 RIVERSIDE COUNTY, CALIFORNIA	AUTHOR	
RI-03189	NADB-R - 1083751; Other - 89-90; Voided - MF-3408	1990	PEAK AND ASSOCIATES and Brian F. Mooney Associates	CULTURAL RESOURCES ASSESSMENT OF AT&T'S PROPOSED SAN BERNARDINO TO SAN DIEGO FIBER OPTIC CABLE, SAN BERNARDINO, RIVERSIDE AND SAN DIEGO COUNTIES, CALIFORNIA	PEAK AND ASSOCIATES & BRIAN F. MOONEY ASSOCIATES	

Report List

Report No.	Other IDs	Year	Author(s)	Title	Affiliation	Resources
RI-06470	NADB-R - 1087835; Submitter - CONTRACT #1659	2005	TANG, BAI, MICHAEL HOGAN, CASEY TIBBET, and DANIEL BALLESTER	HISTORICAL/ARCHAEOLOGICAL RESOURCES SURVEY REPORT, THE EAGLE CREST PROJECT, TENTATIVE TRACT MAP 34037, NEAR THE CITY OF PERRIS, RIVERSIDE COUNTY, CA	CRM TECH	
RI-06581	NADB-R - 1087948; Submitter - CRM TECH Contract #1891	2006	Michael Hogan	Letter Report: Addendum to Historical/Archaeological Resources Survey Report, The Eagle Crest Project, Tentative Tract Map 34037, Near the City of Perris, Riverside County, California	CRM TECH	
RI-06582	NADB-R - 1087949; Submitter - CRM TECH Contract #1659	2005	Michael Hogan	Letter Report: Addendum to Historical/Archaeological Resources Survey Report, The Eagle Crest Project, Tentative Tract Map 34037, Near the City of Perris, Riverside County, California	CRM TECH	

Report List

Report No.	Other IDs	Year	Author(s)	Title	Affiliation	Resources
RI-04404	NADB-R - 1085736; Voided - MF-4913	2000	JONES AND STOKES ASSOCIATES, INC.	FINAL CULTURAL RESOURCES INVENTORY REPORT FOR THE WILLIAMS COMMUNICATIONS, INC., FIBER OPTIC CABLE SYSTEM INSTALLATION PROJECT, RIVERSIDE TO SAN DIEGO, CALIFORNIA VOL I-IV.	JONES AND STOKES ASSOCIATES, INC.	33-000816, 33-000817, 33-000862, 33-001845, 33-002970, 33-003081, 33-003839, 33-004202, 33-004624, 33-004744, 33-004768, 33-007587, 33-007601, 33-008105, 33-008172, 33-009772, 33-009773, 33-009774, 33-009775, 33-009776
RI-04903	NADB-R - 1086265; Submitter - JED-04-521	2004	HOOVER, ANNA M. and KRISTIE R. BLEVINS	AN ARCHAEOLOGICAL SURVEY REPORT, TRACT 32228 (APN 330-23-005) AND APN 330-240-006, 39.5-ACRE PROPERTY, SUN CITY, COUNTY OF RIVERSIDE, CALIFORNIA	L&L ENVIRONMENTAL, INC.	
RI-04974	NADB-R - 1086336; Submitter - EMWD-05-644.ARS	2005	HOOVER, ANNA M and WILLIAM R. GILLEAN	A PHASE IA RCHAEOLOGICAL SURVEY REPORT FOR THE PHASE II PERRIS DESALTER TRANSMISSION PIPELINE PROJECT, NEAR PERRIS, RIVERSIDE COUNTY, CALIFORNIA.	L&L ENVIRONMENTAL, INC.	
RI-05241	NADB-R - 1086604	2004	DICE, MICHAEL, and MARNIE VIANNA	AN ARCHAEOLOGICAL SURVEY AND PALEONTOLOGICAL RECORDS SEARCH ON APN #330-210-003, -008 AND #300-210-004, -005, NORTH SUN CITY, COUNTY OF RIVERSIDE, CA	MICHAEL BRANDMAN ASSOCIATES	
RI-06018	NADB-R - 1087381; Submitter - 1104	2003	Bai Tang, Michael Hogan, Mariam Dahdul, and Daniel Ballester	Historical/Archaeological Resources Survey Report: Menifee Valley North Drainage Facilities Project, In and Near the Communities of Romoland and Homeland, Riverside County, California	CRM TECH	
RI-06888	Submitter - 06-63	2006	Lerch, Michael K. and Gray, Marlesa A.	Cultural Resources Assessment of the Valley-lvyglen Transmission Line Project, Riverside County, California	Statistical Research, Inc.	33-015346, 33-015347, 33-015348, 33-015349, 33-015350, 33-015351, 33-015352, 33-015353, 33-015354, 33-015355, 33-015356, 33-015357, 33-015358, 33-015359, 33-015360, 33-015361, 33-015362, 33-015363, 33-015364, 33-015365, 33-015375, 33-015376, 33-015377, 33-015378, 33-015379, 33-015380, 33-015416, 33-015417, 33-015418, 33-015419, 33-015420, 33-015422, 33-015423, 33-015424, 33-015425, 33-015427
RI-08101	Submitter - 1364	2006	McCormick, Steven and Sherri Gust	Archaeological and Paleotolglcal Resources Assessment Report For The Green Valley Project, Perris, California	Cogstone Resource Management Inc.	33-007705

Report List

Report No.	Other IDs	Year	Author(s)	Title	Affiliation	Resources
RI-08176		2009	Thomas T. Taylor	Destruction of Archaeological Site CA-RIV-1078 Illegal Trespass on SCE Fee-Owned Valley-Serrano 500KV T/L ROW	Biological & Archaeological Resources Corporate Environment, Health & Safety Division, SCE	33-001078
RI-09093		2014	Michael Hotgan	Addendum to Phase I Cultural Resources Assessment: Tentative Tract Map No. 36658 (Off-site Improvements) City of Menifee, Riverside County, California CRM TECH Contract No. 2802	CRM TECH	
RI-09247		2014	B. Tom Tang	Second Addendum to Phase I Cultural Resources Assessment Tentative Tract Map No. 36658 (Off-site Improvements) City of Menifee, Riverside County, California CRM TECH Contract No. 2867A	CRM TECH	
RI-10387		2018	BRIAN F SMITH	CULTURAL RESOURCES MONITORING REPORT FOR THE GREEN VALLEY RANCH PROJECT, TRACT 36989, CITY OF PERRIS, RIVERSIDE COUNTY, CALIFORNIA	BRIAN F SMITH AND ASSOCIATES, INC	

Resource List

Primary No.	Trinomial	Other IDs	Type	Age	Attribute codes	Recorded by	Reports
P-33-001078	CA-RIV-001078		Site	Prehistoric	AP04	1979 (McCarthy, D.F, n/a); 1985 (Bouscaren, Stephen J., ARU); 2006 (Bholat, S., D. Glieberman, J. Jones, Statistical Research, Inc.); 2009 (Ahmet, Koral, Sothern California Edison); 2012 (Daniel Ballester, CRM TECH)	RI-00534, RI-00535, RI-01949, RI-08176
P-33-015354	CA-RIV-008110	Other - SRI-102H	Structure, Site	Historic	AH06	2006 (Goodman, John and Nick Reseburg, Statistical Research, Inc.)	RI-06888