



November 19, 2021

MJM INVESTMENT COMPANY

Contact: Michael J. Asheghian
12300 Wilshire Blvd., #410
Los Angeles, CA 90025

SUBJECT: Habitat Assessment for MJM’s Victorville Connection Project Site Located on the Northwest Corner of the Intersection of Bear Valley Road and 2nd Avenue in the City of Victorville, San Bernardino County, California

Introduction

This report contains the findings of ELMT Consulting’s (ELMT) habitat assessment for MJM’s Victorville Connection Project (project site or site) located on the northwest corner of the intersection of Bear Valley Road and 2nd Avenue in the City of Victorville, San Bernardino County, California. The habitat assessment was conducted by biologist Thomas J. McGill, Ph.D. to document baseline conditions and assess the potential for special-status¹ plant and wildlife species to occur within the project site that could pose a constraint to implementation of the proposed project. Special attention was given to the suitability of the project site to support western Joshua tree (*Yucca brevifolia*) and other special-status plant and wildlife species identified by the California Department of Fish and Wildlife’s (CDFW) California Natural Diversity Database (CNDDDB), and other electronic databases as potentially occurring in the general vicinity of the project. Additionally, the report also addresses resources protected under the Migratory Bird Treaty Act (MBTA) and California Fish and Game Code (FGC), federal Clean Water Act (CWA) regulated by the United States Army Corps of Engineers (Corps) and Regional Water Quality Control Board (Regional Board) respectively, and Section 1602 of the FGC administered by CDFW.

Project Location

The project site is located north of Bear Valley Road between 2nd and 3rd Streets in the City of Victorville, California. The site is depicted on the Hesperia quadrangle of the United States Geological Survey’s (USGS) 7.5-minute map series in Section 33 of Township 5 North and Range 4 West. Specifically, the project site is bordered by Bear Valley Road along its southern boundary, 2nd Avenue along its eastern boundary, 3rd Avenue along its western boundary, just south of Jasmine Street. Refer to Exhibits 1-3 in Attachment A.

Project Description

The project proposes a mixed-use development on an approximately 36-acre site. Refer to Attachment B, *Site Plan*.

¹ As used in this report, “special-status” refers to plant and wildlife species that are federally and State listed, proposed, or candidates; plant species that have been designated with a California Native Plant Society Rare Plant Rank; wildlife species that are designated by the CDFW as fully protected, species of special concern, or watch list species; and specially protected natural vegetation communities as designated by the CDFW.

Methodology

A literature review and records search were conducted to determine which special-status biological resources have the potential to occur on or within the general vicinity of the project site. In addition to the literature review, a general habitat assessment or field investigation of the project site was conducted to document existing conditions and assess the potential for special-status biological resources to occur within the project site.

Literature Review

Prior to conducting the field investigation, a literature review and records search was conducted for special-status biological resources potentially occurring on or within the vicinity of the project site. Previously recorded occurrences of special-status plant and wildlife species and their proximity to the project site were determined through a query of the CDFW's QuickView Tool in the Biogeographic Information and Observation System (BIOS), CNDDDB Rarefind 5, the California Native Plant Society's (CNPS) Electronic Inventory of Rare and Endangered Vascular Plants of California, Calflora Database, compendia of special-status species published by CDFW, and the United States Fish and Wildlife Service (USFWS) species listings.

All available reports, survey results, and literature detailing the biological resources previously observed on or within the vicinity of the project site were reviewed to understand existing site conditions and note the extent of any disturbances that have occurred within the project site that would otherwise limit the distribution of special-status biological resources. Standard field guides and texts were reviewed for specific habitat requirements of special-status and non-special-status biological resources, as well as the following resources:

- Google Earth Pro historic aerial imagery (1985-2020);
- United States Department of Agriculture (USDA) Natural Resource Conservation Service (NRCS), Soil Survey²;
- USFWS Critical Habitat designations for Threatened and Endangered Species; and
- USFWS Endangered Species Profiles.

The literature review provided a baseline from which to inventory the biological resources potentially occurring within the project site. The CNDDDB database was used, in conjunction with ArcGIS software, to locate the nearest recorded occurrences of special-status species and determine the distance from the project site.

Habitat Assessment/Field Investigation

Following the literature review, biologist Thomas J. McGill, Ph.D. inventoried and evaluated the condition of the habitat within a 200-foot buffer around the project site, where applicable, on September 22, 2021. Plant communities and land cover types identified on aerial photographs during the literature review were verified by walking meandering transects throughout the project site. In addition, aerial photography was

2 A soil series is defined as a group of soils with similar profiles developed from similar parent materials under comparable climatic and vegetation conditions. These profiles include major horizons with similar thickness, arrangement, and other important characteristics, which may promote favorable conditions for certain biological resources.

reviewed prior to the site investigation to locate potential natural corridors and linkages that may support the movement of wildlife through the area. These areas identified on aerial photography were then walked during the field investigation.

Soil Series Assessment

On-site and adjoining soils were researched prior to the field investigation using the USDA NRCS Soil Survey for San Bernardino County, California. In addition, a review of the local geological conditions and historical aerial photographs was conducted to assess the ecological changes that the project site has undergone.

Plant Communities

Plant communities were mapped using 7.5-minute USGS topographic base maps and aerial photography. The plant communities were classified in accordance with Sawyer, Keeler-Wolf and Evens (2009), delineated on an aerial photograph, and then digitized into GIS Arcview. The Arcview application was used to compute the area of each plant community and/or land cover type in acres.

Plants

Common plant species observed during the field investigation were identified by visual characteristics and morphology in the field and recorded in a field notebook. Unusual and less-familiar plants were photographed in the field and identified in the laboratory using taxonomic guides. Taxonomic nomenclature used in this study follows the 2012 Jepson Manual (Hickman 2012). In this report, scientific names are provided immediately following common names of plant species (first reference only).

Wildlife

Wildlife species detected during the field investigation by sight, calls, tracks, scat, or other sign were recorded during surveys in a field notebook. Field guides used to assist with identification of wildlife species during the survey included The Sibley Field Guide to the Birds of Western North America (Sibley 2003), A Field Guide to Western Reptiles and Amphibians (Stebbins 2003), and A Field Guide to Mammals of North America (Reid 2006). Although common names of wildlife species are well standardized, scientific names are provided immediately following common names in this report (first reference only).

Jurisdictional Drainages and Wetlands

Aerial photography was reviewed prior to conducting a field investigation in order to locate and inspect any potential natural drainage features, ponded areas, or water bodies that may fall under the jurisdiction of the United States Army Corps of Engineers (Corps), Regional Water Quality Control Board (Regional Board), or CDFW. In general, surface drainage features indicated as blue-line streams on USGS maps that are observed or expected to exhibit evidence of flow are considered potential riparian/riverine habitat and are also subject to state and federal regulatory jurisdiction. In addition, ELMT reviewed jurisdictional waters information through examining historical aerial photographs to gain an understanding of the impact of land-use on natural drainage patterns in the area. The USFWS National Wetland Inventory (NWI) and Environmental Protection Agency (EPA) Water Program “My Waters” data layers were also reviewed to determine whether any hydrologic features and wetland areas have been documented on or within the

vicinity of the project site.

Existing Site Conditions

The proposed project site is a partially developed lot in the City of Victorville, on the northwest corner of Bear Valley Road and 2nd Avenue. The site was cleared nearly 15 years ago for a residential development with infrastructure installed and lots and streets rough graded. Commercial businesses occur to the east and south, residential developments to the north and west, and partial undeveloped land to the east and west. Non-native and early successional native plant species have begun to revegetate portions of the site.

Topography and Soils

The project site is relatively flat at an approximate elevation of 3,040 feet above mean sea level. Based on the NRCS USDA Web Soil Survey, the project site is historically underlain by Bryman loamy fine sand (5 to 9 percent slopes). Soils on-site have been compacted by anthropogenic disturbances associated with the rough grading of the site for development.

Vegetation

The project site supports one (1) land cover type that would be classified as disturbed (see Exhibit 4, *Vegetation*, in Attachment A). No natural communities of special concern were observed on or adjacent to the project site. See Attachment C, *Site Photographs*, for representative site photographs.

Due to heavy anthropogenic disturbances (i.e., grading, installation of roads and infrastructure), this land cover type no longer supports natural vegetation communities, only scattered, remanent plant from the previous creosote bush scrub plant community. Plant species observed growing in disturbed areas of the project site included creosote bush (*Larrea tridentata*), rabbitbush (*Ericamerica nauseous*), Anderson thornbush (*Lycium andersonii*), California buckwheat (*Eriogonum fasciculatum*), match weed (*Gutierrez sarothrae*) and non-native grasses (*Schismus barbatus* and *Bromus tectorum*).

Wildlife

Plant communities provide foraging habitat, nesting/denning sites, and shelter from adverse weather or predation. This section provides a discussion of those wildlife species that were observed or are expected to occur within the project site. The discussion is to be used a general reference and is limited by the season, time of day, and weather conditions in which the field investigation was conducted. Wildlife detections were based on calls, songs, scat, tracks, burrows, and direct observation. The project site provides limited habitat for wildlife species except those adapted to a high degree of anthropogenic disturbances and development.

Fish

No fish or hydrogeomorphic features (e.g., creeks, ponds, lakes, reservoirs) with frequent sources of water that would support populations of fish were observed on or within the vicinity of the project site. Therefore, no fish are expected to occur and are presumed absent from the project site.

Amphibians

No amphibians or hydrogeomorphic features (e.g., creeks, ponds, lakes, reservoirs) with frequent sources of water that would support populations of amphibians were observed on or within the vicinity of the project site. Therefore, no amphibians are expected to occur and are presumed absent from the project site.

Reptiles

The survey area provides suitable foraging and cover habitat for local reptile species adapted to conditions within the Mojave Desert. The only reptilian species observed was western side-blotched lizard (*Uta stansburiana elegans*). Common reptilian species that could be expected to occur include Great Basin fence lizard (*Sceloporus occidentalis longipes*), yellow-backed spiny lizard (*Sceloporus uniformis*), Great basin gopher snake (*Pituophis catenifer deserticola*), red racer (*Coluber flagellum piceus*), and southwestern speckled rattlesnake (*Crotalus mitchellii pyrrhus*).

Birds

The project site and surrounding area provide marginal foraging and nesting habitat for a variety of bird species adapted to a high degree of anthropogenic disturbance. Bird species detected during the field investigation include house finch (*Haemorhous mexicanus*), common raven (*Corvus corax*), mourning dove (*Zenaidura macroura*), and white-crowned sparrow (*Zonotrichia leucophrys*).

Mammals

The project site provides marginal foraging and cover habitat for a mammalian species adapted to a high degree of anthropogenic disturbance. The only mammalian species observed during the field investigation was California ground squirrel (*Otospermophilus beecheyi*). Common mammalian species that could be potentially occur include coyote (*Canis latrans*), jackrabbit (*Lepus californicus*), and desert cottontails (*Sylvilagus auduboni*).

Nesting Birds

No active nests or birds displaying nesting behavior were observed during the field investigation, which was conducted during nesting season. The project site and surrounding area provide marginal foraging and nesting habitat for year-round and seasonal avian residents, as well as migrating songbirds that could occur in the area. In addition, the project site has the potential to provide suitable nesting opportunities for birds that nest on the open ground and those acclimated to routine disturbances (e.g. killdeer (*Charadrius vociferus*)).

Nesting birds are protected pursuant to the Migratory Bird Treaty Act (MBTA) and California Fish and Game Code (Sections 3503, 3503.5, 3511, and 3513 prohibit the take, possession, or destruction of birds, their nests or eggs). If construction occurs between February 1st and August 31st, a pre-construction clearance survey for nesting birds should be conducted within three (3) days of the start of any vegetation removal or ground disturbing activities to ensure that no nesting birds will be disturbed during construction.

Migratory Corridors and Linkages

Habitat linkages provide connections between larger habitat areas that are separated by development.

Wildlife corridors are similar to linkages but provide specific opportunities for animals to disperse or migrate between areas. A corridor can be defined as a linear landscape feature of sufficient width to allow animal movement between two comparatively undisturbed habitat fragments. Adequate cover is essential for a corridor to function as a wildlife movement area. It is possible for a habitat corridor to be adequate for one species yet still inadequate for others. Wildlife corridors are features that allow for the dispersal, seasonal migration, breeding, and foraging of a variety of wildlife species. Additionally, open space can provide a buffer against both human disturbance and natural fluctuations in resources.

The proposed project will be confined to an existing disturbed area and is surrounded by development on the north, south, east and west sides. The previous construction efforts have removed the natural plant community from the site. There are no known wildlife corridors within the immediate vicinity of the project area. In addition, there are no riparian corridors, creeks, or useful patches of steppingstone habitat (natural areas). Implementation of the proposed project is not expected to impact wildlife movement opportunities.

Jurisdictional Areas

There are three key agencies that regulate activities within inland streams, wetlands, and riparian areas in California. The Corps Regulatory Branch regulates discharge of dredge or fill materials into “waters of the United States” pursuant to Section 404 of the Clean Water Act (CWA) and Section 10 of the Rivers and Harbors Act. Of the State agencies, the CDFW regulates alterations to streambed and bank under Fish and Wildlife Code Sections 1600 et seq., and the Regional Board regulates discharges into surface waters pursuant to Section 401 of the CWA and the California Porter-Cologne Water Quality Control Act.

No jurisdictional drainage and/or wetland features were observed on the project site during the field investigation. Further no blueline streams, have been recorded on the project site. Therefore, development of the project will not result in impacts to Corps, Regional Board, or CDFW jurisdiction and regulatory approvals will not be required.

Special-Status Biological Resources

The CNDDDB Rarefind 5 and the CNPS Electronic Inventory of Rare and Endangered Vascular Plants of California were queried for reported locations of special-status plant and wildlife species as well as special-status natural plant communities in the Hesperia USGS 7.5-minute quadrangle. Only one quadrangle was queried since the project site is surrounded by existing development and does not connect with any natural areas or native plant communities in the region. The habitat assessment evaluated the conditions of the habitat(s) within the boundaries of the project site to determine if the existing plant communities, at the time of the survey, have the potential to provide suitable habitat(s) for special-status plant and wildlife species.

The literature search identified seven (7) special-status plant species and fourteen (14) special-status wildlife species as having the potential to occur within the Hesperia 7.5-minute quadrangle. No special-status plant communities have been recorded in the Hesperia 7.5-minute quadrangle. Special-status plant and wildlife species were evaluated for their potential to occur within the project site based on habitat requirements, availability and quality of suitable habitat, and known distributions. Species determined to have the potential to occur within the general vicinity of the project site is presented in Attachment D: *Potentially Occurring Special-Status Biological Resources*.

Special-Status Plants

According to the CNDDDB and CNPS, seven (7) special-status plant species have been recorded in the Hesperia quadrangle (refer to Attachment D). No special-status plant species were observed on-site during the field investigation. The entirety of the project site has been subject to anthropogenic disturbances from previous land uses and grading activities, and surrounding development. These disturbances have reduced, if not eliminated, the suitability of the habitat to support special-status plant species known to occur in the general vicinity of the project site. Based on habitat requirements for specific special-status plant species and the availability and quality of habitats needed by each species, it was determined that the project site does not provide suitable habitat for any of the special-status plant species known to occur in the area and are presumed to be absent from the project site. No focused surveys are recommended.

Special-Status Wildlife

According to the CNDDDB, fourteen (14) special-status wildlife species have been reported in the Hesperia quadrangle (refer to Attachment D). No special-status wildlife species were observed on-site during the field investigation, including desert tortoise (*Gopherus agassizii*), burrowing owl (*Athene cunicularia*) or Mohave ground squirrel (*Xerospermophilus mohavensis*). Further, the proposed project site does not have provide suitable habitat for any of the aforementioned species. Based on habitat requirements for specific species and the availability and quality of on-site habitats, it was determined that the proposed project has a low potential to support Cooper's hawk (*Accipiter cooperii*). All remaining special-status wildlife species are presumed to be absent from the project site due to a lack of quality habitat and surrounding development.

Cooper's hawk is no state or federally listed as threatened or endangered. In order to ensure impacts to Cooper's hawk do not occur from implementation of the proposed project, a pre-construction nesting bird clearance survey shall be conducted prior to ground disturbance. With implementation of the pre-construction nesting bird clearance survey, impacts to special-status avian species will be less than significant and no mitigation will be required.

Critical Habitats

Under the federal Endangered Species Act, "Critical Habitat" is designated at the time of listing of a species or within one year of listing. Critical Habitat refers to specific areas within the geographical range of a species at the time it is listed that include the physical or biological features that are essential to the survival and eventual recovery of that species. Maintenance of these physical and biological features requires special management considerations or protection, regardless of whether individuals or the species are present or not. All federal agencies are required to consult with the USFWS regarding activities they authorize, fund, or permit which may affect a federally listed species or its designated Critical Habitat. The purpose of the consultation is to ensure that projects will not jeopardize the continued existence of the listed species or adversely modify or destroy its designated Critical Habitat. The designation of Critical Habitat does not affect private landowners, unless a project they are proposing is on federal lands, uses federal funds, or requires federal authorization or permits (e.g., funding from the Federal Highways Administration or a Clean Water Act Permit from the United States Army Corps of Engineers). If there is a federal nexus, then the federal agency that is responsible for providing the funding or permit would consult with the USFWS.

The project site is not located within federally designated Critical Habitat. Further, the nearest Critical Habitat designations are located approximately 8.5 miles to the south for arroyo toad (*Anaxyrus californicus*) and 2.5 miles to the southwest for southwestern willow flycatcher (*Empidonax traillii extimus*) (refer to Exhibit 5, *Critical Habitat*, in Attachment A). Therefore, no impacts to federally designated Critical Habitat will occur from implementation of the proposed project.

Conclusion

Based literature review and field survey, and existing site conditions discussed in this report, implementation of the project will have no significant impacts on federally or State listed species known to occur in the general vicinity of the project site. Additionally, the project will have no effect on designated Critical Habitat or regional wildlife corridors/linkage because none exists within the area. No jurisdictional drainage and/or wetland features were observed on the project site during the field investigation. No further surveys are recommended. With completion of the recommendations provided below, no impacts to year-round, seasonal, or special-status avian residents or special-status species will occur from implementation of the proposed project.

Recommendations

Migratory Bird Treaty Act and Fish and Game Code

Nesting birds are protected pursuant to the Migratory Bird Treaty Act (MBTA) and California Fish and Game Code (Sections 3503, 3503.5, 3511, and 3513 prohibit the take, possession, or destruction of birds, their nests or eggs). In order to protect migratory bird species, a nesting bird clearance survey should be conducted prior to any ground disturbance or vegetation removal activities that may disrupt the birds during the nesting season.

If construction occurs between February 1st and August 31st, a pre-construction clearance survey for nesting birds should be conducted within three (3) days of the start of any vegetation removal or ground disturbing activities to ensure that no nesting birds will be disturbed during construction. The biologist conducting the clearance survey should document a negative survey with a brief letter report indicating that no impacts to active avian nests will occur. If an active avian nest is discovered during the pre-construction clearance survey, construction activities should stay outside of a no-disturbance buffer. The size of the no-disturbance buffer will be determined by the wildlife biologist and will depend on the level of noise and/or surrounding anthropogenic disturbances, line of sight between the nest and the construction activity, type and duration of construction activity, ambient noise, species habituation, and topographical barriers. These factors will be evaluated on a case-by-case basis when developing buffer distances. Limits of construction to avoid an active nest will be established in the field with flagging, fencing, or other appropriate barriers; and construction personnel will be instructed on the sensitivity of nest areas. A biological monitor should be present to delineate the boundaries of the buffer area and to monitor the active nest to ensure that nesting behavior is not adversely affected by the construction activity. Once the young have fledged and left the nest, or the nest otherwise becomes inactive under natural conditions, construction activities within the buffer area can occur.

Please do not hesitate to contact Tom McGill at (951) 285-6014 or tmcgill@elmtconsulting.com or Travis McGill at (909) 816-1646 or travismcgill@elmtconsulting.com should you have any questions this report.

Sincerely,



Thomas J. McGill, Ph.D.
Managing Director



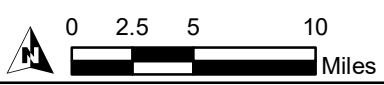
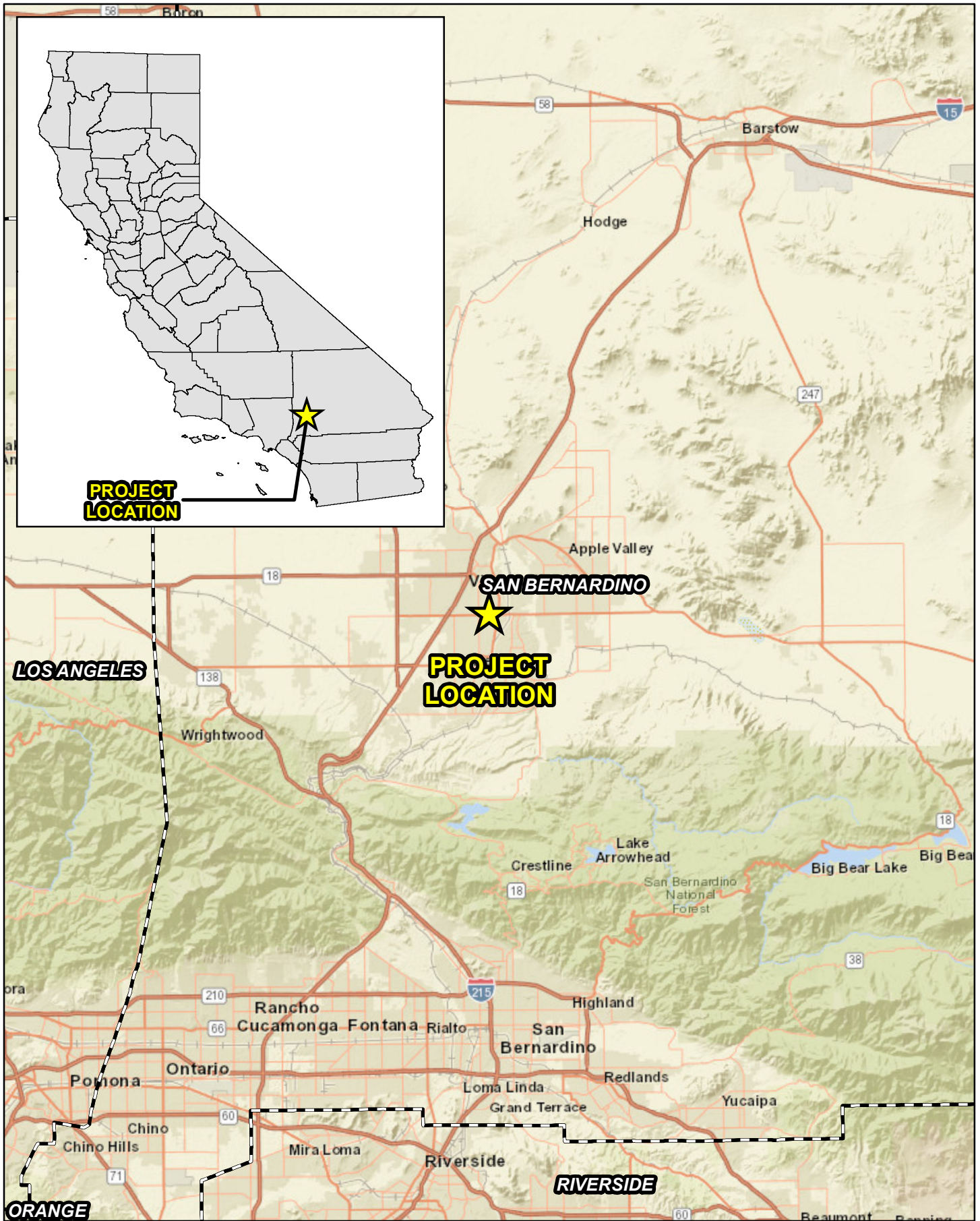
Travis J. McGill
Director

Attachments:

- A. *Project Exhibits*
- B. *Site Plan*
- C. *Site Photographs*
- D. *Potentially Occurring Special-Status Biological Resources*
- E. *Regulations*

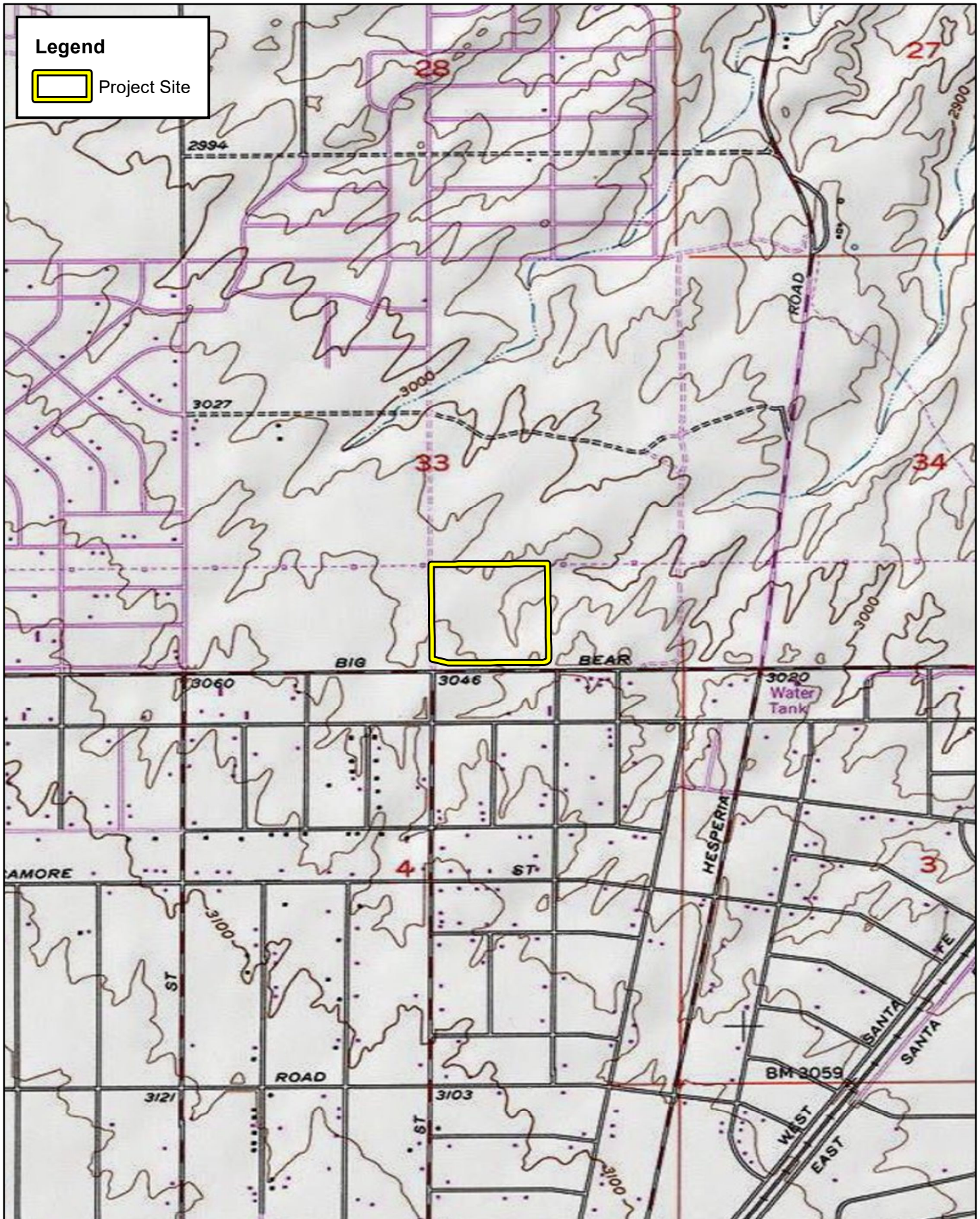
Attachment A

Project Exhibits

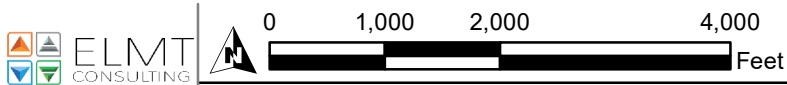


Source: World Street Map, San Bernardino County

VICTORVILLE CONNECTION
HABITAT ASSESSMENT
Regional Vicinity



VICTORVILLE CONNECTION
 HABITAT ASSESSMENT
Site Vicinity

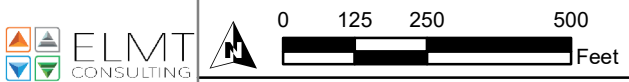


Source: USA Topographic Map, San Bernardino County



Legend

 Project Site



Source: ESRI Aerial Imagery, San Bernardino County

VICTORVILLE CONNECTION
HABITAT ASSESSMENT

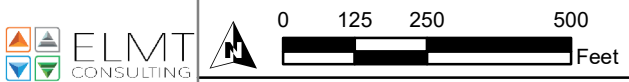
Project Site

Exhibit 3



Legend

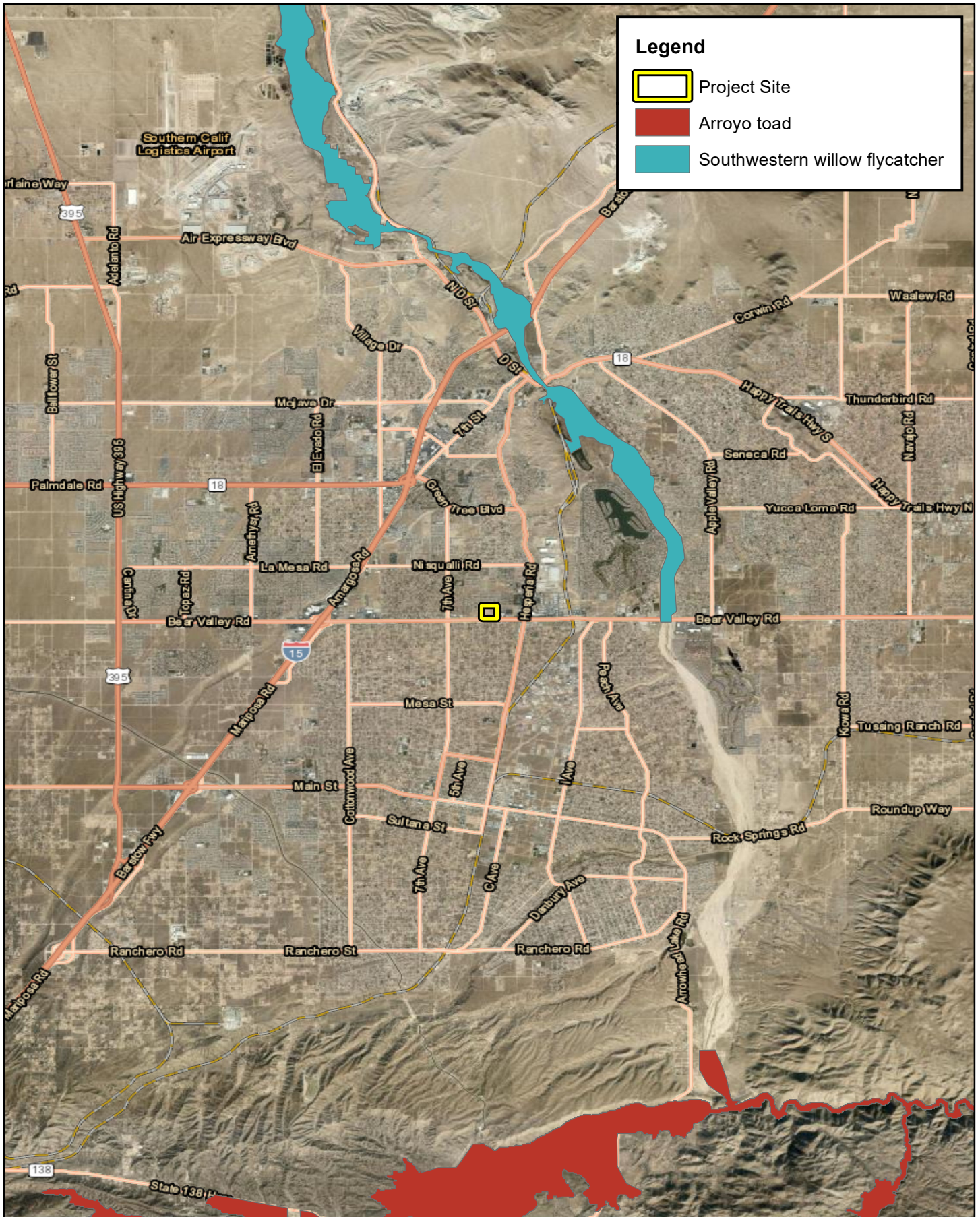
- Project Site
- Disturbed



Source: ESRI Aerial Imagery, San Bernardino County

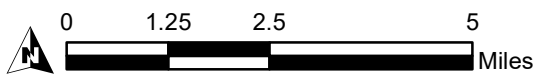
VICTORVILLE CONNECTION
HABITAT ASSESSMENT

Vegetation



Legend

- Project Site
- Arroyo toad
- Southwestern willow flycatcher



Source: ESRI Aerial Imagery, USFWS Critical Habitat, San Bernardino County

VICTORVILLE CONNECTION
HABITAT ASSESSMENT
Critical Habitat

Attachment B

Site Plan

- 1 PRIMARY ENTRY
 - SPECIMEN TREES
 - TEXTURED PAVING
 - VIEW TO RECREATION CENTER
- 2 SATELLITE RECREATION AREAS
 - BBQ'S
 - OUTDOOR SEATING
 - SHADE STRUCTURES
- 3 PRIMARY RECREATION AREA
 - COMMUNITY BUILDING
 - POOL
 - SPA
 - CABANAS
- 4 BBQ'S AREAS
- 5 TOT LOT
- 6 PEDESTRIAN CONNECTION TO RETAIL
- 7 TRAFFIC SIGNAL
- 8 CONTROLLED ACCESS GATE.
- 9 MONUMENT SIGN
- 10 MEDITATION GARDEN
- 11 GATHERING PLAZA



RETAIL SUMMARY

PARCEL A (GAS STATION) = ± 2.1 AC.
 RETAIL = ± 3,500 S.F.
 PARKING PROVIDED = ± 38 SPACES

PARCEL B (McDonald) = ± 1.2 AC.
 FAST FOOD = ± 4,400 S.F.
 PARKING REQ. = 44 SPACES
 PARKING PROVIDED = ± 43 SPACES

PARCEL C1 (RETAIL) = ± 2.9 AC
 PADS W/ DRIVE THRU = ± 12,700 S.F.

PAD E = 6,200 SF
 1,800 SF DRIVE-THRU (See delineated area)
 4,400 SF SHOPS
 PAD F = 3,500 SF
 1,800 SF DRIVE-THRU (See delineated area)
 1,700 SF SHOPS
 PAD H = 3,000 SF
 3,000 SF DRIVE-THRU (See delineated area)

PARKING PROVIDED
 RATIO = 10/1000
 REQUIRED = 127
 DRIVE THRU PAD PROVIDED = ± 117 SPACES

PARCEL C2 (RETAIL/ OFFICE) = ± 5.89 AC
 MAJOR 1 = ± 42,000 S.F.
 PADS AND SHOPS = ± 14,100 S.F.
 TOTAL = ± 56,100 S.F.
 PARKING PROVIDED = 275
 RATIO = 4.9/1000

PARCEL C3 (RETAIL/ OFFICE) = ± 1.6 AC
 BLDG J RETAIL/OFFICE/MEDICAL = ± 6,800 S.F.
 BLDG K RETAIL/OFFICE/MEDICAL = ± 3,080 S.F.
 TOTAL = ± 10,080 S.F.
 PARKING PROVIDED = ± 61 SPACES
 OVERALL PARKING RATIO = 6.01/1000

PARCEL D (RESIDENTIAL) = ± 18.67 AC
 DWELLING UNITS = 376 UNITS
 GROSS AREA = 483,736 SF
 PARKING REQ'D. = 750
 PARKING PROVIDED = 760

PARCEL E = ± 3.3 AC
 STORAGE / = ± 137,183 GROSS SF.
 OFFICE W/ STORAGE = 10,000 SF.
 OFFICE PARKING RATIO = 4/1000
 PARKING REQUIRED = 40 SPACES
 PARKING PROVIDED = ±45 SPACES

NOTE:
 (2) TWO UNITS WILL BECOME MAINTENANCE ROOMS

Attachment C

Site Photographs



Photograph 1: Looking southwest across the project site from the northeast corner. Note the layout of roads and the installation of infrastructure that has been in place for approximately 15 years. Commercial business along Bear Valley Road can be seen at the top left of the photo.



Photograph 2: Looking west along the northern boundary. Residential housing can be seen at the west boundary, top center of the photo, and along the northern boundary, top right of the photo.



Photograph 3: Looking west from the center of the eastern boundary. Residential housing along the west boundary can be seen at the top of the photo. Infrastructure is present in the foreground.



Photograph 4: Looking south across the eastern portion of the site. The Desert Valley Hospital and Medical Center can be seen at the top left of the photo.

Attachment D

Potentially Occurring Special-Status Biological Resources

Table D-1: Potentially Occurring Special-Status Biological Resources

Scientific Name Common Name	Status	Habitat Description	Observed On-site	Potential to Occur
SPECIAL-STATUS WILDLIFE SPECIES				
<i>Accipiter cooperii</i> Cooper's hawk	Fed: None CA: WL	Generally found in forested areas up to 3,000 feet in elevation, especially near edges and rivers. Prefers hardwood stands and mature forests, but can be found in urban and suburban areas where there are tall trees for nesting. Common in open areas during nesting season.	No	Low The project site provides limited foraging habitat, but no nesting opportunities are present. This species is adapted to urban environments and occurs commonly.
<i>Antrozous pallidus</i> pallid bat	Fed: None CA: SSC	Locally common species of low elevation in California. Occurs in grasslands, shrublands, woodlands, and forests from sea level up through mixed conifer forests. Most common in open, dry habitats with rocky areas for roosting.	No	Presumed Absent There is no suitable habitat present within or adjacent to the project site.
<i>Asio otus</i> long-eared owl	Fed: None CA: SSC	Hunts mostly at night over grasslands and other open habitats. Nesting occurs in dense trees such as oaks and willows where it occupies stick nests of other species, particularly raptors or corvids.	No	Presumed Absent There is no suitable habitat present within or adjacent to the project site.
<i>Athene cunicularia</i> burrowing owl	Fed: None CA: SSC	Prefers habitat with short, sparse vegetation with few shrubs and well-drained soils in grassland, shrub steppe, and desert habitats. Primarily a grassland species, but it persists and even thrives in some landscapes highly altered by human activity. Occurs in open, annual or perennial grasslands, deserts, and scrublands characterized by low-growing vegetation. The overriding characteristics of suitable habitat appear to be burrows for roosting and nesting and relatively short vegetation with only sparse shrubs and taller vegetation.	No	Presumed Absent There is no suitable habitat present within or adjacent to the project site.
<i>Calypte costae</i> Costa's hummingbird	Fed: None CA: None	Desert and semi-desert, arid brushy foothills and chaparral. A desert hummingbird that breeds in the Sonoran and Mojave Deserts. Departs desert heat moving into chaparral, scrub, and woodland habitats.	No	Presumed Absent There is no suitable habitat present within or adjacent to the project site.
<i>Empidonax traillii</i> willow flycatcher	Fed: None CA: END	A rare to locally uncommon, summer resident in wet meadow and montane riparian habitats (2,000 to 8,000 ft) in the Sierra Nevada and Cascade Range. Most often occurs in broad, open river valleys or large mountain meadows with lush growth of shrubby willows.	No	Presumed Absent There is no suitable habitat present within or adjacent to the project site.
<i>Lanius ludovicianus</i> loggerhead shrike	Fed: None CA: SSC	Prefers open habitats with bare ground, scattered shrubs, and areas with low or sparse herbaceous cover including open-canopied valley foothill hardwood, riparian, pinyon-juniper, desert riparian, creosote bush scrub, and Joshua tree woodland. Requires suitable perches including trees, posts, fences, utility lines, or other perches.	No	Presumed Absent There is no suitable habitat present within or adjacent to the project site.

Scientific Name Common Name	Status	Habitat Description	Observed On-site	Potential to Occur
<i>Phrynosoma blainvillii</i> coast horned lizard	Fed: None CA: SSC	Occurs in a wide variety of vegetation types including coastal sage scrub, annual grassland, chaparral, oak woodland, riparian woodland and coniferous forest. In inland areas, this species is restricted to areas with pockets of open microhabitat, created by disturbance (i.e. fire, floods, roads, grazing, fire breaks). The key elements of such habitats are loose, fine soils with a high sand fraction; an abundance of native ants or other insects; and open areas with limited overstory for basking and low, but relatively dense shrubs for refuge.	No	Presumed Absent There is no suitable habitat present within or adjacent to the project site.
<i>Setophaga petechia</i> yellow warbler	Fed: None CA: SSC	Nests over all of California except the Central Valley, the Mojave Desert region, and high altitudes and the eastern side of the Sierra Nevada. Winters along the Colorado River and in parts of Imperial and Riverside Counties. Nests in riparian areas dominated by willows, cottonwoods, sycamores, or alders or in mature chaparral. May also use oaks, conifers, and urban areas near stream courses.	No	Presumed Absent There is no suitable habitat present within or adjacent to the project site.
<i>Siphateles bicolor mohavensis</i> Mojave tui chub	Fed: END CA: END; FP	Historically occurred throughout the Mojave River drainage. Only surviving natural populations occurs in Soda Spring at the Desert Studies Center near the town of Baker, Lark Seep on the China Lake Naval Weapons Center, Camp Cady, and at the Lewis Center for Educational Research in Apple Valley.	No	Presumed Absent There is no suitable habitat present within or adjacent to the project site.
<i>Taxidea taxus</i> American badger	Fed: None CA: SSC	Primarily occupy grasslands, parklands, farms, tallgrass and shortgrass prairies, meadows, shrub-steppe communities and other treeless areas with sandy loam soils where it can dig more easily for its prey. Occasionally found in open chaparral (with less than 50% plant cover) and riparian zones.	No	Presumed Absent There is no suitable habitat present within or adjacent to the project site.
<i>Toxostoma lecontei</i> Le Conte's thrasher	Fed: None CA: SSC	An uncommon to rare, local resident in southern California deserts from southern Mono Co. south to the Mexican border, and in western and southern San Joaquin Valley. Occurs primarily in open desert wash, desert scrub, alkali desert scrub, and desert succulent shrub habitats; also occurs in Joshua tree habitat with scattered shrubs.	No	Presumed Absent There is no suitable habitat present within or adjacent to the project site.
<i>Vireo vicinior</i> gray vireo	Fed: None CA: SSC	A common factor to the habitat type is shrub cover that forms a continuous zone of twig growth from one to five feet above the ground. Shrubbery may either be closed as in chaparral, or partly open, as in the understory of pinyon-juniper woodland.	No	Presumed Absent There is no suitable habitat present within or adjacent to the project site.
<i>Xerospermophilus mohavensis</i> Mohave ground squirrel	Fed: None CA: THR	Restricted to the Mojave Desert in open desert scrub, alkali desert scrub, annual grassland, and Joshua tree woodland. Prefers sandy to gravelly soils and tends to avoid rocky areas. Occurs sympatrically with the white-tailed antelope squirrel.	No	Presumed Absent There is no suitable habitat present within or adjacent to the project site.

SPECIAL-STATUS PLANT SPECIES				
<i>Canbya candida</i> white pygmy-poppy	Fed: None CA: None CNPS: 4.2	Occurs on gravelly, sandy, granitic soils in Joshua tree woodland, Mojavean desert scrub, and pinyon and juniper woodland. Found at elevations ranging from 2,297 to 5,249 feet above mean sea level (msl). Blooming period is from March to June.	No	Presumed Absent There is no suitable habitat present within or adjacent to the project site.
<i>Castilleja plagiotoma</i> Mojave paintbrush	Fed: None CA: None CNPS: 4.3	Grows within Great Basin scrub (alluvial), Joshua tree woodland, lower montane coniferous forest, and pinyon and juniper woodland habitats. Found at elevations ranging from 984 to 8,202 feet. Blooming period is from April to June.	No	Presumed Absent There is no suitable habitat present within or adjacent to the project site.
<i>Chorizanthe spinosa</i> Mojave spineflower	Fed: None CA: None CNPS: 4.2	Grows in alkaline or non-alkaline soils in chenopod scrub, Joshua tree woodland, Mojavean desert scrub, and playas. Found at elevations ranging from 20 to 4,265 feet. Blooming period is from March to July.	No	Presumed Absent There is no suitable habitat present within or adjacent to the project site.
<i>Eremothera boothii ssp. boothii</i> Booth's evening-primrose	Fed: None CA: None CNPS: 2B.3	Occurs in desert washes, open plains, and scrubland. Found at elevations ranging from 814 to 2,402 feet above msl. Blooming period is from June to August.	No	Presumed Absent There is no suitable habitat present within or adjacent to the project site.
<i>Johnstonella costata</i> ribbed cryptantha	Fed: None CA: None CNPS: 4.3	Occurs in sandy soils within desert dunes and Mojavean and Sonoran desert scrub. Found at elevations ranging from -197 to 1,640 feet. Blooming period is from February to May.	No	Presumed Absent There is no suitable habitat present within or adjacent to the project site.
<i>Opuntia basilaris var. brachyclada</i> short-joint beavertail	Fed: None CA: None CNPS: 1B.2	Habitats include chaparral, Joshua tree woodland, Mojavean desert scrub, pinyon and juniper woodlands. Found at elevations ranging from 1,394 to 5,906 feet. Blooming period is from April to August.	No	Presumed Absent There is no suitable habitat present within or adjacent to the project site.
<i>Yucca brevifolia</i> western Joshua tree	Fed: None CA: CE CNPS: N/A	Occurs in a variety of arid habitats within the Mojave Desert. Found at elevations ranging from 1,600 to 6,600 feet. Blooming period is from March to June.	No	Absent No Joshua Trees were observed onsite.

U.S. Fish and Wildlife Service (Fed) - Federal
 END – Federal Endangered
 THR – Federal Threatened
 DL - Delisted

California Department of Fish and Wildlife (CA) - California
 END – California Endangered
 THR – California Threatened
 CTHR – California Candidate Threatened
 DL - Delisted
 FP – California Fully Protected
 SSC – California Species of Special Concern
 WL – California Watch List
 CE – Candidate Endangered

California Native Plant Society (CNPS) - California Rare Plant Rank
 1B Plants Rare, Threatened, or Endangered in California and Elsewhere
 2B Plants Rare, Threatened, or Endangered in California, but More Common Elsewhere
 4 Plants of Limited Distribution – A Watch List

Threat Ranks
 0.2- Moderately threatened in California
 0.3- Not very threatened in California

Attachment E

Regulations

Special status species are native species that have been afforded special legal or management protection because of concern for their continued existence. There are several categories of protection at both federal and state levels, depending on the magnitude of threat to continued existence and existing knowledge of population levels.

Federal Regulations

Endangered Species Act of 1973

Federally listed threatened and endangered species and their habitats are protected under provisions of the Federal Endangered Species Act (ESA). Section 9 of the ESA prohibits “take” of threatened or endangered species. “Take” under the ESA is defined as to “harass, harm, pursue, hunt, shoot, wound, kill, trap, capture, or collect, or to attempt to engage in any of the specifically enumerated conduct.” The presence of any federally threatened or endangered species that are in a project area generally imposes severe constraints on development, particularly if development would result in “take” of the species or its habitat. Under the regulations of the ESA, the United States Fish and Wildlife Service (USFWS) may authorize “take” when it is incidental to, but not the purpose of, an otherwise lawful act.

Critical Habitat is designated for the survival and recovery of species listed as threatened or endangered under the ESA. Critical Habitat includes those areas occupied by the species, in which are found physical and biological features that are essential to the conservation of an ESA listed species and which may require special management considerations or protection. Critical Habitat may also include unoccupied habitat if it is determined that the unoccupied habitat is essential for the conservation of the species.

Whenever federal agencies authorize, fund, or carry out actions that may adversely modify or destroy Critical Habitat, they must consult with USFWS under Section 7 of the ESA. The designation of Critical Habitat does not affect private landowners, unless a project they are proposing uses federal funds, or requires federal authorization or permits (e.g., funding from the Federal Highway Administration or a permit from the U.S. Army Corps of Engineers (Corps)).

If USFWS determines that Critical Habitat will be adversely modified or destroyed from a proposed action, the USFWS will develop reasonable and prudent alternatives in cooperation with the federal institution to ensure the purpose of the proposed action can be achieved without loss of Critical Habitat. If the action is not likely to adversely modify or destroy Critical Habitat, USFWS will include a statement in its biological opinion concerning any incidental take that may be authorized and specify terms and conditions to ensure the agency is in compliance with the opinion.

Migratory Bird Treaty Act

The Migratory Bird Treaty Act (MBTA) (16 U.S. Government Code [USC] 703) makes it unlawful to pursue, capture, kill, possess, or attempt to do the same to any migratory bird or part, nest, or egg of any such bird listed in wildlife protection treaties between the United States, Great Britain, Mexico, Japan, and the countries of the former Soviet Union, and authorizes the U.S. Secretary of the Interior to protect and regulate the taking of migratory birds. It establishes seasons and bag limits for hunted species and protects migratory birds, their occupied nests, and their eggs (16 USC 703; 50 CFR 10, 21).

The MBTA covers the taking of any nests or eggs of migratory birds, except as allowed by permit pursuant to 50 CFR, Part 21. Disturbances causing nest abandonment and/or loss of reproductive effort (i.e., killing or abandonment of eggs or young) may also be considered “take.” This regulation seeks to protect migratory birds and active nests.

In 1972, the MBTA was amended to include protection for migratory birds of prey (e.g., raptors). Six families of raptors occurring in North America were included in the amendment: Accipitridae (kites, hawks, and eagles); Cathartidae (New World vultures); Falconidae (falcons and caracaras); Pandionidae (ospreys); Strigidae (typical owls); and Tytonidae (barn owls). The provisions of the 1972 amendment to the MBTA protects all species and subspecies of the families listed above. The MBTA protects over 800 species including geese, ducks, shorebirds, raptors, songbirds and many relatively common species.

State Regulations

California Environmental Quality Act (CEQA)

The California Environmental Quality Act (CEQA) provides for the protection of the environment within the State of California by establishing State policy to prevent significant, avoidable damage to the environment through the use of alternatives or mitigation measures for projects. It applies to actions directly undertaken, financed, or permitted by State lead agencies. If a project is determined to be subject to CEQA, the lead agency will be required to conduct an Initial Study (IS); if the IS determines that the project may have significant impacts on the environment, the lead agency will subsequently be required to write an Environmental Impact Report (EIR). A finding of non-significant effects will require either a Negative Declaration or a Mitigated Negative Declaration instead of an EIR. Section 15380 of the CEQA Guidelines independently defines “endangered” and “rare” species separately from the definitions of the California Endangered Species Act (CESA). Under CEQA, “endangered” species of plants or animals are defined as those whose survival and reproduction in the wild are in immediate jeopardy, while “rare” species are defined as those who are in such low numbers that they could become endangered if their environment worsens.

California Endangered Species Act (CESA)

In addition to federal laws, the state of California implements the CESA which is enforced by CDFW. The CESA program maintains a separate listing of species beyond the FESA, although the provisions of each act are similar.

State-listed threatened and endangered species are protected under provisions of the CESA. Activities that may result in “take” of individuals (defined in CESA as; “hunt, pursue, catch, capture, or kill, or attempt to hunt, pursue, catch, capture, or kill”) are regulated by CDFW. Habitat degradation or modification is not included in the definition of “take” under CESA. Nonetheless, CDFW has interpreted “take” to include the destruction of nesting, denning, or foraging habitat necessary to maintain a viable breeding population of protected species.

The State of California considers an endangered species as one whose prospects of survival and reproduction are in immediate jeopardy. A threatened species is considered as one present in such small numbers throughout its range that it is likely to become an endangered species in the near future in the

absence of special protection or management. A rare species is one that is considered present in such small numbers throughout its range that it may become endangered if its present environment worsens. State threatened and endangered species are fully protected against take, as defined above.

The CDFW has also produced a species of special concern list to serve as a species watch list. Species on this list are either of limited distribution or their habitats have been reduced substantially, such that a threat to their populations may be imminent. Species of special concern may receive special attention during environmental review, but they do not have formal statutory protection. At the federal level, USFWS also uses the label species of concern, as an informal term that refers to species which might be in need of concentrated conservation actions. As the Species of Concern designated by USFWS do not receive formal legal protection, the use of the term does not necessarily ensure that the species will be proposed for listing as a threatened or endangered species.

Fish and Game Code

Fish and Game Code Sections 3503, 3503.5, 3511, and 3513 are applicable to natural resource management. For example, Section 3503 of the Code makes it unlawful to destroy any birds' nest or any birds' eggs that are protected under the MBTA. Further, any birds in the orders Falconiformes or Strigiformes (Birds of Prey, such as hawks, eagles, and owls) are protected under Section 3503.5 of the Fish and Game Code which makes it unlawful to take, possess, or destroy their nest or eggs. A consultation with CDFW may be required prior to the removal of any bird of prey nest that may occur on a project site. Section 3511 of the Fish and Game Code lists fully protected bird species, where the CDFW is unable to authorize the issuance of permits or licenses to take these species. Pertinent species that are State fully protected by the State include golden eagle (*Aquila chrysaetos*) and white-tailed kite (*Elanus leucurus*). Section 3513 of the Fish and Game Code makes it unlawful to take or possess any migratory nongame bird as designated in the MBTA or any part of such migratory nongame bird except as provided by rules and regulations adopted by the Secretary of the Interior under provisions of the MBTA.

Native Plant Protection Act

Sections 1900–1913 of the Fish and Game Code were developed to preserve, protect, and enhance Rare and Endangered plants in the state of California. The act requires all state agencies to use their authority to carry out programs to conserve Endangered and Rare native plants. Provisions of the Native Plant Protection Act prohibit the taking of listed plants from the wild and require notification of the CDFW at least ten days in advance of any change in land use which would adversely impact listed plants. This allows the CDFW to salvage listed plant species that would otherwise be destroyed.

California Native Plant Society Rare and Endangered Plant Species

Vascular plants listed as rare or endangered by the CNPS, but which have no designated status under FESA or CESA are defined as follows:

California Rare Plant Rank

- 1A- Plants Presumed Extirpated in California and either Rare or Extinct Elsewhere
- 1B- Plants Rare, Threatened, or Endangered in California and Elsewhere

- 2A- Plants Presumed Extirpated in California, But More Common Elsewhere
- 2B- Plants Rare, Threatened, or Endangered in California, But More Common Elsewhere
- 3- Plants about Which More Information is Needed - A Review List
- 4- Plants of Limited Distribution - A Watch List

Threat Ranks

- .1- Seriously threatened in California (over 80% of occurrences threatened / high degree and immediacy of threat)
- .2- Moderately threatened in California (20-80% occurrences threatened / moderate degree and immediacy of threat)
- .3- Not very threatened in California (<20% of occurrences threatened / low degree and immediacy of threat or no current threats known).

Local Regulations

San Bernardino County Development Code

Section 88.01.060 of the County of San Bernardino Development Code provides regulations for the removal or harvesting of specified desert native plants in order to preserve and protect the plants and to provide for the conservation and wise use of desert resources. The provisions are intended to coincide with the Desert Native Plants Act (Food and Agricultural Code Section 8001 et seq.) and the State Department of Food and Agriculture to implement and enforce the Act.

Pursuant to Section 88.01.060 of the Development Code, the following desert native plants or any part of them, except the fruit, shall not be removed except under a Tree or Plant Removal Permit:

- 1) The following desert native plants with stems two inches or greater in diameter or six feet or greater in height:
 - (A) *Dalea spinosa* (smoke tree)
 - (B) All species of the genus *Prosopis* (mesquites)
- 2) All species of the family *Agavaceae* (century plants, nolinias, yuccas)
- 3) Creosote Rings, 10 feet or greater in diameter
- 4) All Joshua trees
- 5) Any part of any of the following species, whether living or dead:
 - (A) *Olneya tesota* (desert ironwood)
 - (B) All species of the genus *Prosopis* (mesquites)
 - (C) All species of the genus *Cercidium* (palos verdes)

There are three key agencies that regulate activities within inland streams, wetlands, and riparian areas in California. The Corps Regulatory Branch regulates activities pursuant to Section 404 of the Federal Clean Water Act (CWA) and Section 10 of the Rivers and Harbors Act. Of the State agencies, the CDFG regulates activities under the Fish and Game Code Section 1600-1616, and the Regional Board regulates activities pursuant to Section 401 of the CWA and the California Porter-Cologne Water Quality Control Act.

Federal Regulations

Section 404 of the Clean Water Act

Since 1972, the Corps and U.S. Environmental Protection Agency (EPA) have jointly regulated the filling of “waters of the U.S.,” including wetlands, pursuant to Section 404 of the Clean Water Act (CWA). The Corps has regulatory authority over the discharge of dredged or fill material into the waters of the United States under Section 404 of the CWA. The Corps and EPA define “fill material” to include any “material placed in waters of the United States where the material has the effect of: (i) replacing any portion of a water of the United States with dry land; or (ii) changing the bottom elevation of any portion of the waters of the United States.” Examples include, but are not limited to, sand, rock, clay, construction debris, wood chips, and “materials used to create any structure or infrastructure in the waters of the United States.” In order to further define the scope of waters protected under the CWA, the Corps and EPA published the Clean Water Rule on June 29, 2015. Pursuant to the Clean Water Rule, the term “waters of the United States” is defined as follows:

- (i) All waters which are currently used, or were used in the past, or may be susceptible to use in interstate or foreign commerce, including all waters which are subject to the ebb and flow of the tide.
- (ii) All interstate waters, including interstate wetlands¹.
- (iii) The territorial seas.
- (iv) All impoundments of waters otherwise defined as waters of the United States under the definition.
- (v) All tributaries² of waters identified in paragraphs (i) through (iii) mentioned above.
- (vi) All waters adjacent³ to a water identified in paragraphs (i) through (v) mentioned above, including wetlands, ponds, lakes, oxbows, impoundments, and similar waters.

¹ The term *wetlands* means those areas that are inundated or saturated by surface or groundwater at a frequency and duration sufficient to support, and that under normal circumstances do support, a prevalence of vegetation typically adapted for life in saturated soil conditions.

² The terms *tributary* and *tributaries* each mean a water that contributes flow, either directly or through another water (including an impoundment identified in paragraph (iv) mentioned above), to a water identified in paragraphs (i) through (iii) mentioned above, that is characterized by the presence of the physical indicators of a bed and banks and an ordinary high water mark.

³ The term *adjacent* means bordering, contiguous, or neighboring a water identified in paragraphs (i) through (v) mentioned above, including waters separated by constructed dikes or barriers, natural river berms, beach dunes, and the like.

- (vii) All prairie potholes, Carolina bays and Delmarva bays, Pocosins, western vernal pools, Texas coastal prairie wetlands, where they are determined, on a case-specific basis, to have a significant nexus to a water identified in paragraphs (i) through (iii) mentioned above.
- (viii) All waters located within the 100-year floodplain of a water identified in paragraphs (i) through (iii) mentioned above and all waters located within 4,000 feet of the high tide line or ordinary high water mark of a water identified in paragraphs (i) through (v) mentioned above, where they are determined on a case-specific basis to have a significant nexus to a waters identified in paragraphs (i) through (iii) mentioned above.

The following features are not defined as “waters of the United States” even when they meet the terms of paragraphs (iv) through (viii) mentioned above:

- (i) Waste treatment systems, including treatment ponds or lagoons designed to meet the requirements of the Clean Water Act.
- (ii) Prior converted cropland.
- (iii) The following ditches:
 - (A) Ditches with ephemeral flow that are not a relocated tributary or excavated in a tributary.
 - (B) Ditches with intermittent flow that are not a relocated tributary, excavated in a tributary, or drain wetlands.
 - (C) Ditches that do not flow, either directly or through another water, into a water of the United States as identified in paragraphs (i) through (iii) of the previous section.
- (iv) The following features:
 - (A) Artificially irrigated areas that would revert to dry land should application of water to that area cease;
 - (B) Artificial, constructed lakes and ponds created in dry land such as farm and stock watering ponds, irrigation ponds, settling basins, fields flooded for rice growing, log cleaning ponds, or cooling ponds;
 - (C) Artificial reflecting pools or swimming pools created in dry land;
 - (D) Small ornamental waters created in dry land;
 - (E) Water-filled depressions created in dry land incidental to mining or construction activity, including pits excavated for obtaining fill, sand, or gravel that fill with water;
 - (F) Erosional features, including gullies, rills, and other ephemeral features that do not meet the definition of a tributary, non-wetland swales, and lawfully constructed grassed waterways; and
 - (G) Puddles.
- (v) Groundwater, including groundwater drained through subsurface drainage systems.
- (vi) Stormwater control features constructed to convey, treat, or store stormwater that are created in dry land.

- (vii) Wastewater recycling structures constructed in dry land; detention and retention basins built for wastewater recycling; groundwater recharge basins; percolation ponds built for wastewater recycling; and water distributary structures built for wastewater recycling.

Section 401 of the Clean Water Act

Pursuant to Section 401 of the CWA, any applicant for a federal license or permit to conduct any activity which may result in any discharge to waters of the United States must provide certification from the State or Indian tribe in which the discharge originates. This certification provides for the protection of the physical, chemical, and biological integrity of waters, addresses impacts to water quality that may result from issuance of federal permits, and helps insure that federal actions will not violate water quality standards of the State or Indian tribe. In California, there are nine Regional Water Quality Control Boards (Regional Board) that issue or deny certification for discharges to waters of the United States and waters of the State, including wetlands, within their geographical jurisdiction. The State Water Resources Control Board assumed this responsibility when a project has the potential to result in the discharge to waters within multiple Regional Boards.

State Regulations

Fish and Game Code

Fish and Game Code Sections 1600 et. seq. establishes a fee-based process to ensure that projects conducted in and around lakes, rivers, or streams do not adversely impact fish and wildlife resources, or, when adverse impacts cannot be avoided, ensures that adequate mitigation and/or compensation is provided.

Fish and Game Code Section 1602 requires any person, state, or local governmental agency or public utility to notify the CDFW before beginning any activity that will do one or more of the following:

- (1) substantially obstruct or divert the natural flow of a river, stream, or lake;
- (2) substantially change or use any material from the bed, channel, or bank of a river, stream, or lake;
- or
- (3) deposit or dispose of debris, waste, or other material containing crumbled, flaked, or ground pavement where it can pass into a river, stream, or lake.

Fish and Game Code Section 1602 applies to all perennial, intermittent, and ephemeral rivers, streams, and lakes in the State. CDFW's regulatory authority extends to include riparian habitat (including wetlands) supported by a river, stream, or lake regardless of the presence or absence of hydric soils and saturated soil conditions. Generally, the CDFW takes jurisdiction to the top of bank of the stream or to the outer limit of the adjacent riparian vegetation (outer drip line), whichever is greater. Notification is generally required for any project that will take place in or in the vicinity of a river, stream, lake, or their tributaries. This includes rivers or streams that flow at least periodically or permanently through a bed or channel with banks that support fish or other aquatic life and watercourses having a surface or subsurface flow that support or have supported riparian vegetation. A Section 1602 Streambed Alteration Agreement would be required if impacts to identified CDFW jurisdictional areas occur.

Porter Cologne Act

The California *Porter-Cologne Water Quality Control Act* gives the State very broad authority to regulate waters of the State, which are defined as any surface water or groundwater, including saline waters. The Porter-Cologne Act has become an important tool in the post SWANCC and Rapanos regulatory environment, with respect to the state’s authority over isolated and insignificant waters. Generally, any person proposing to discharge waste into a water body that could affect its water quality must file a Report of Waste Discharge in the event that there is no Section 404/401 nexus. Although “waste” is partially defined as any waste substance associated with human habitation, the Regional Board also interprets this to include fill discharged into water bodies.