



**Notice to Intent to Adopt a Mitigated Negative Declaration
for the
Well 30 (District Project No.C195054)
City of Jurupa Valley**

LEAD AGENCY: Jurupa Community Services District

NOTICE IS HEREBY GIVEN that the Jurupa Community Services District (hereinafter "JCSD") has completed an Initial Study for the Well 30 (District Project No. C195054) (hereinafter "Project"), in accordance with the California Environmental Quality Act (CEQA) and will act as the Lead Agency. The Initial Study is a preliminary analysis prepared by JCSD, as Lead Agency, to inform the JCSD Board of Directors, affected agencies, and the public of potential environmental impacts associated with the implementation of the proposed Project. Based on the analysis in the Initial Study, it has been determined that all Project-related environmental impacts will be reduced to a level that is less than significant with the incorporation of mitigation measures. Accordingly, a Mitigated Negative Declaration will meet the requirements of CEQA.

PROJECT LOCATION: The proposed Well 30 site is an approximately 0.96-acre vacant parcel (APN 156-310-063) located south and east of the approximately 0.11-acre Well 19 site (APN 156-332-021). Collectively these two parcels are referred to as the "Project Site." The Project Site is located in the City of Jurupa Valley, Riverside County. (See **Figure 1 – Project Location.**)

PROJECT DESCRIPTION: The proposed Project consists of the destruction of the JCSD's Well 19 and site acquisition, design, drilling, construction, and operation of a new community groundwater well identified as Well 30 (District Project No. C195054).

Well 30 is proposed to be approximately 20 inches in diameter and drilled to a depth of approximately 850 feet below ground surface. Well 30 would be equipped with a 400 to 600 horse power (HP) electric motor. The well head and approximately 200 linear feet of above ground piping (including valves) would be constructed on top of a concrete pad. Site improvements also include an approximately 340 square foot (SF) electrical building to house the electronics to operate the well; SCADA antenna, standby backup diesel generators installed on a concrete pad in a waterproof enclosure; a Southern California Edison (SCE) meter and transformer, both installed on concrete pads; an approximately 890 SF chemical building, driveway access to the site from Etiwanda Avenue, and approximately 160 linear feet (LF) of water pipeline from the well head to JCSD's existing water pipeline in Philadelphia Avenue. The Project also includes approximately 165 linear feet of PVC piping (identified on Plate 1 as "PUMP TO WASTE") from the well head to existing storm drain facilities in Philadelphia Avenue. (Refer to **Plate 1 – Preliminary Site Layout.**) This pipeline will be used during the initial start-up of Well 30 and during periodic equipment tests conducted as part of maintenance inspections when "blow-off" water is released. The released blow-off water will be conveyed via this pipeline to the existing storm drain system in Philadelphia Avenue. The Project will also include on-site drainage facilities to convey site runoff into the existing storm drain system. Operation of Well 30 will entail regular maintenance of the equipment and grounds of the well site. It is anticipated that JCSD personnel will visit the Well 30 site on a daily basis, which is the same frequency personnel are currently visiting Well 19.

Although operation of Well 30 will increase potable water pumping capacity within JCSD's service area by 1,300 gpm, this increase will service buildout in JCSD's service area that is already planned for in the Jurupa Valley General Plan (JVGP) and Eastvale General Plan (EGP) and studied in the JVGP Environmental Impact Report (EIR) and the EGP EIR. Implementation of the proposed Project would not result in any development not previously studied in these EIRs, thus the analysis in the Well 30 Initial Study tiered from the JVGP EIR and EGP EIR to analyze the Project's reasonably foreseeable indirect impacts.

The chemical storage building will store salt in a brine tank. The chemical storage building will also include an on-site chlorine generator, which will use the salt to produce sodium hypochlorite (also known as chlorine) at a 0.8 percent solution. Once produced the chlorine will be introduced into the pumped groundwater prior to the water entering JCSD's potable water system. The chemical storage building include 110 percent secondary containment so that in the event of an accidental release of chlorine, it will be totally contained within the chemical storage building until cleaned up by JCSD personnel. The chemical storage building will be locked when JCSD personnel are not on site.

For security purposes, the Well 30 site will be enclosed with either a chain link fence or a solid wall. Access to the site will be via a locked gate from Philadelphia Avenue.

As part of the construction of Well 30, an approximately 18-inch diameter pilot bore hole will be drilled to the expected final depth of the well. Following drilling of bore hole, the larger diameter well will be drilled. As part of the design of the electrical and chemical building, two shallow geotechnical borings will be made. These borings will be filled.

Construction of Well 30 is estimated to take approximately 17 months and destruction of Well 19 is estimated to take approximately one month; for a total construction/destruction period of approximately 18 months.

Destruction and abandonment of Well 19 would entail the removal of all above ground buildings and piping on the Well 19 site and deconstruction of Well 19. Destruction of Well 19 would serve the dual purpose of protecting the groundwater supply and eliminating potential physical hazards. The process for destroying a well entails cleaning the well to remove undesirable materials, including obstructions to filling and sealing the well. All debris, oil from oil-lubricated pumps, and pollutants and contaminants that could interfere with well destruction would be removed and disposed in accordance with applicable regulations. The Well 19 casing may be perforated or removed in whole or in part prior to filling Well 19 with suitable impervious sealing material. (DWR Part III.) Destruction of Well 19 is estimated to take approximately one month.

CORTESE LIST NOTICE: Pursuant to Public Resources Code § 21092.6(a), the Project site is not included on a list of hazardous materials sites compiled pursuant to Government Code § 65962.5 (California Department of Toxic Substances Control List of various hazardous sites).

DOCUMENT AVAILABILITY: Copies of the Initial Study and the proposed Mitigated Negative Declaration (IS/MND) are available for public review at the JCSD's office located at 11201 Harrel Street, Jurupa Valley, California 91752. The IS/MND is also available on JCSD's website at <https://www.jcsd.us/>. All documents referenced in the Initial Study are available for public review at those locations identified in the Initial Study.

PROJECT CONTRACT: Questions or request for electronic copies of the Initial Study and Mitigated Negative Declaration should be directed to Ashish Marwah or Keith Backus at the address provided above, by phone at (951) 685-7434, or by e-mail at Amarwah@jcsd.us or KBackus@jcsd.us.

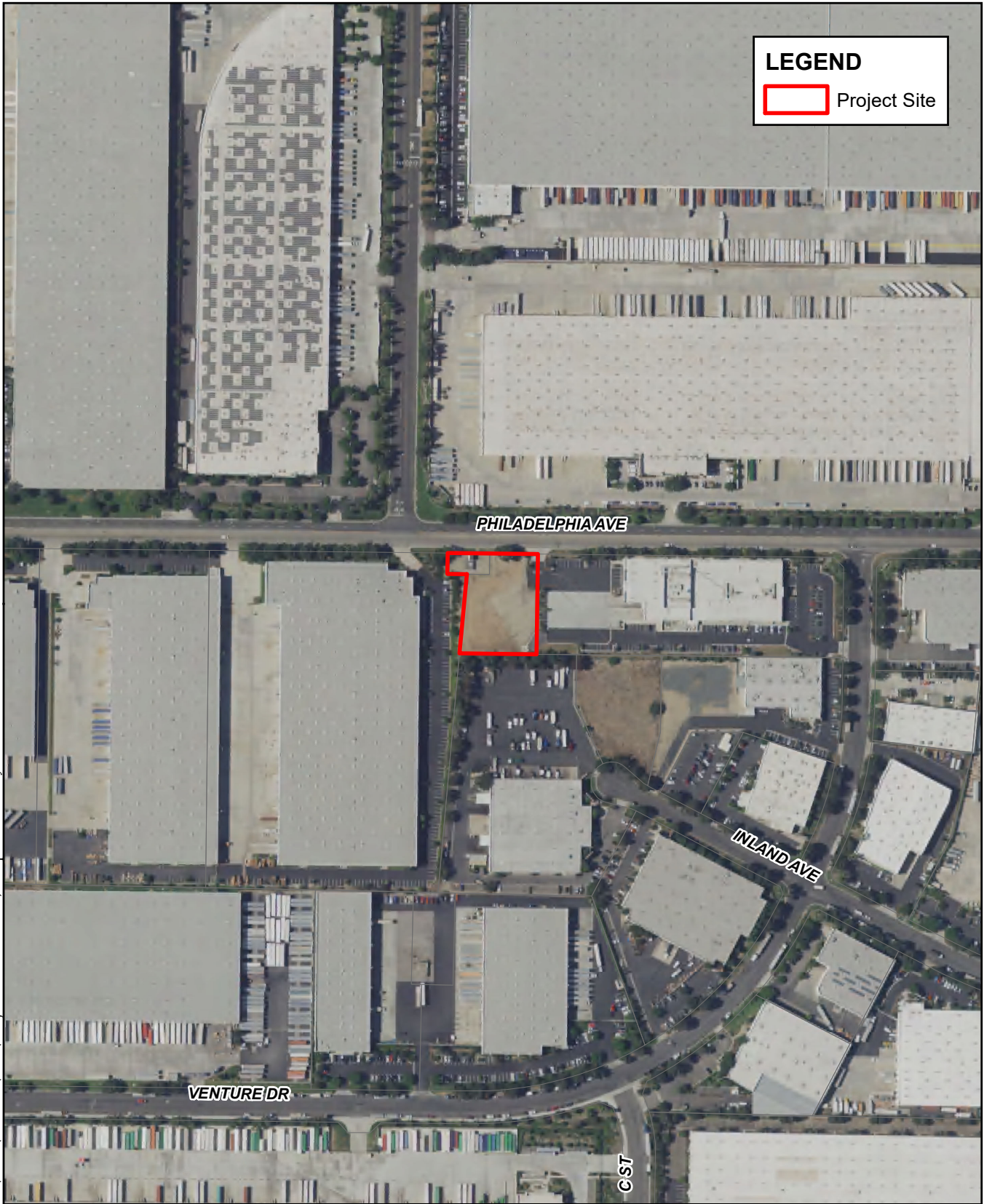
COMMENTS: In accordance with Section 15072(a) of the State CEQA Guidelines, this Public Notice is to officially notify the general public, public agencies, and landowners that a 30-day public review period will begin on **June 6, 2022**. Any comments on the proposed Initial Study and Mitigated Negative Declaration or requests for information should be sent to:

Jurupa Community Services District
Attn: Ashish Marwah, Assistant Engineer (amarwah@jcsd.us)
Keith Backus, Engineer Services Supervisor (KBackus@jcsd.us)
11201 Harrel Street
Jurupa Valley, CA 91752

Written comments must be received at the above address or via email by **5 pm on July 6, 2022**. Any written comments received will be forwarded to the District's Board of Directors and will be considered before the Mitigated Negative Declaration is approved for adoption.

PUBLIC MEETING: A public hearing of JCSD's Board of Directors to take action on the Initial Study and Mitigated Negative Declaration will be held at **6:00 p.m. on September 26, 2022** at the District's Boardroom located at 11201 Harrel Street, Jurupa Valley, CA 91752.

H:\2021\21-0027\GIS\Project Location.mxd; Map created 21 Jun 2021



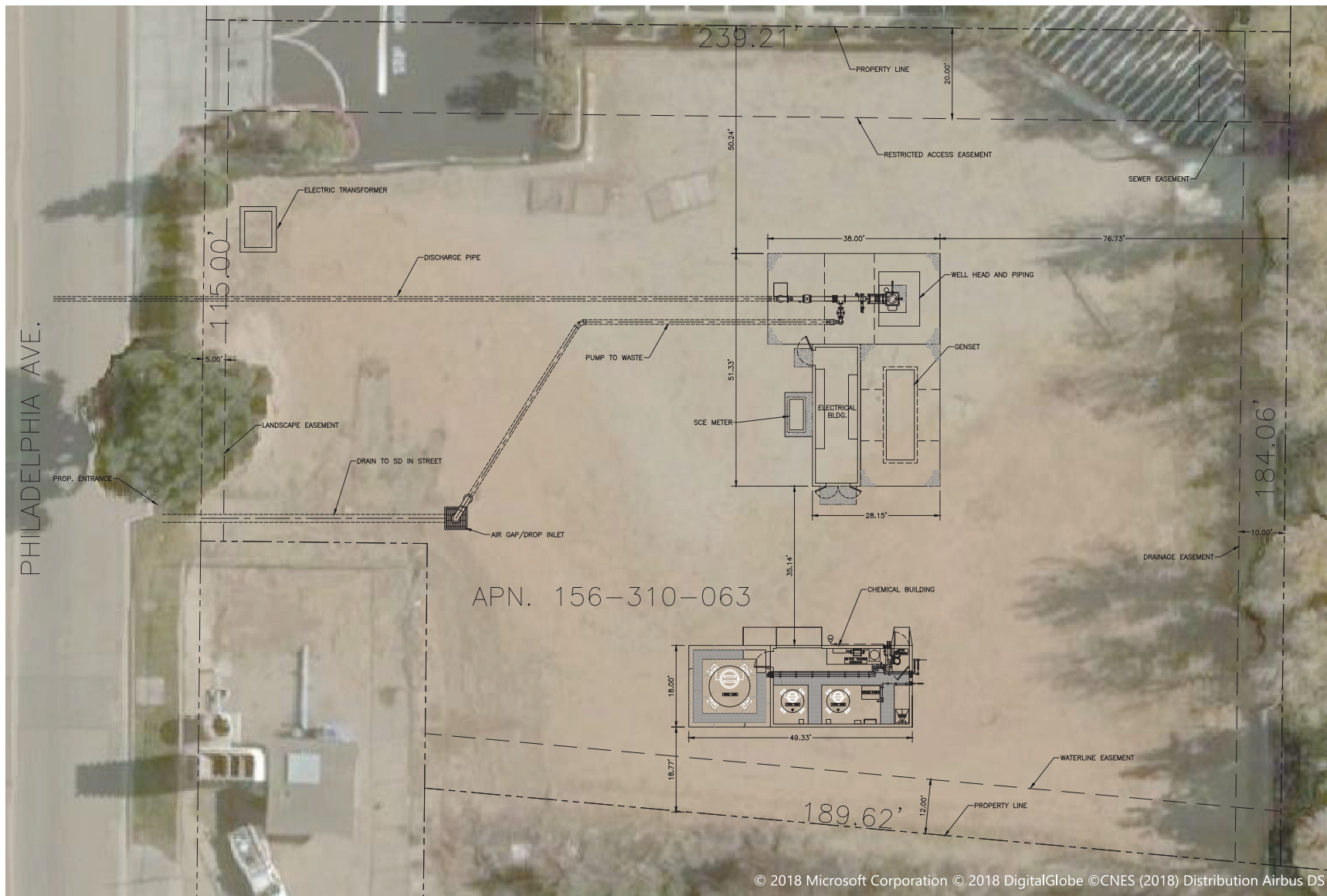
Sources: Riverside Co. GIS, 2021 (streets) and 2016 (imagery).

Figure 1 - Project Location

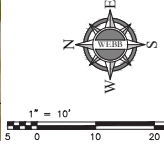
Well 30



0 250 500 750
 |-----|-----|-----|
 Feet



© 2018 Microsoft Corporation © 2018 DigitalGlobe ©CNES (2018) Distribution Airbus DS

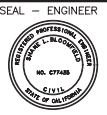


FOR REVIEW ONLY



NOTE:
 WORK CONTAINED WITHIN THESE PLANS SHALL NOT COMMENCE UNTIL AN ENCROACHMENT PERMIT AND/OR A GRADING PERMIT HAS BEEN ISSUED.
 THE PRIVATE ENGINEER SIGNING THESE PLANS IS RESPONSIBLE FOR ASSURING THE ACCURACY AND ACCEPTABILITY OF THE DESIGN HEREON. IN THE EVENT OF DISCREPANCIES ARISING AFTER JCSD APPROVAL OR DURING CONSTRUCTION, THE PRIVATE ENGINEER SHALL BE RESPONSIBLE FOR DETERMINING AN ACCEPTABLE SOLUTION AND REVISING THE PLANS FOR APPROVAL BY JCSD.

DATE	BY	MARK	REVISIONS	APPR. DATE



ALBERT A. WEBB ASSOCIATES
 ENGINEERING CONSULTANTS
 3788 McCRAY STREET
 RIVERSIDE, CA 92506
 PH. (951) 686-1070
 FAX (951) 788-1256

PREPARED UNDER THE SUPERVISION OF: XX
 DESIGNED BY: XX CHECKED BY: XX
 R.C.E. NO.: XX
 DATE: XX

BENCHMARK: N/A
 SCALE: HORIZ. SCALE: 1" = 10' VERT. SCALE: N/A
 FOR: XX
 W.O.: XX
 COUNTY FILE NO.: XX

JURUPA COMMUNITY SERVICES DISTRICT
 RIVERSIDE COUNTY, CALIFORNIA
 WELL NO. 19 IMPROVEMENT
 PRELIMINARY SITE LAYOUT

SHEET NO. 1
 OF 1 SHEETS

Figure 2 - Preliminary Site Layout
 Well 30