

Appendices

Appendix A

Aesthetics

Appendix A.1

Transit Priority Project Justification/
Transit Map and Schedule

Sportsmen's Lodge

Consistency with SB 375's Transit Priority Project Criteria

In 2008, the State of California adopted Senate Bill 375 (SB 375), which requires the State's 18 metropolitan planning organizations, including the Southern California Association of Governments (SCAG), to incorporate a "Sustainable Communities Strategy" (SCS) into their respective Regional Transportation Plans to achieve their region's greenhouse gas (GHG) emission reduction targets set by the California Air Resources Board (CARB). Correspondingly, SB 375 provides various CEQA streamlining provisions to qualifying transit priority projects (TPPs) that are consistent with an adopted applicable SCS; one such CEQA streamlining tool is the Sustainable Communities Environmental Assessment (SCEA).

A qualifying TPP in the SCAG region must be located within one-half mile of a Major Transit Stop or a High-Quality Transit Corridor included in a Regional Transportation Plan (see Public Resources Code §21155(a) and (b)). As defined by Public Resources Code §21155(b), a High-Quality Transit Corridor is a corridor with fixed route bus service with service intervals no longer than 15 minutes during peak commute hours. In its latest adopted 2020–2045 RTP/SCS, SCAG defines the morning peak hours as 6 A.M. to 9 A.M., and the afternoon peak hours as 3 P.M. to 7 P.M. The peak frequency is calculated by dividing 420 minutes (the combined 7-hour morning and afternoon peak periods converted to minutes) by the total peak bus trips, and the average frequency must be 15 minutes or less to qualify.

The Project Site fronts Ventura Boulevard, which is served by multiple bus lines, including the Metro 240 line, which stops at Ventura Boulevard and Coldwater Canyon Avenue, and which provides an average service frequency of 12 minutes during peak hours (see attached Metro bus schedule). Accordingly, Ventura Boulevard meets the statutory definition of a High-Quality Transit Corridor.

Appendix A.2

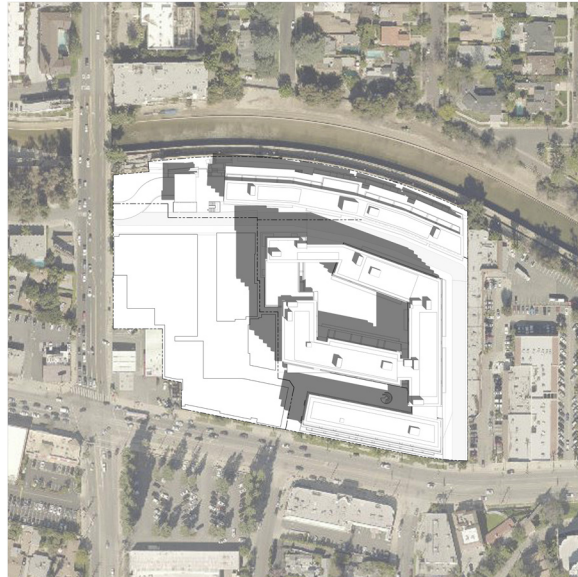
Shade/Shadow Diagrams

SPORTSMEN'S LODGE MIXED-USE SHADOW STUDIES

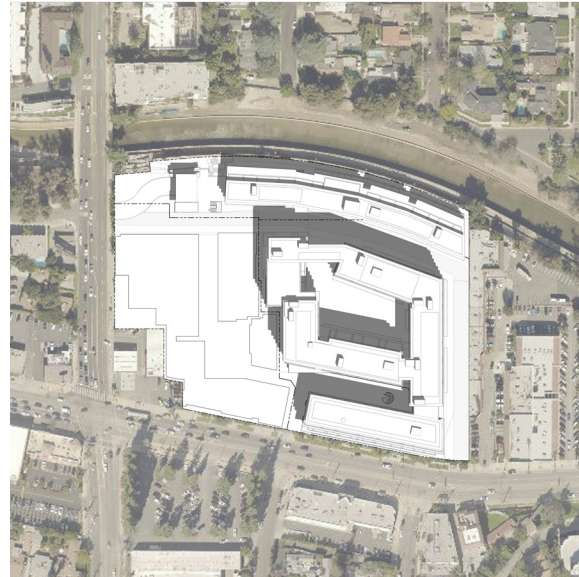
VERNAL EQUINOX SHADOW STUDY - MARCH 20TH



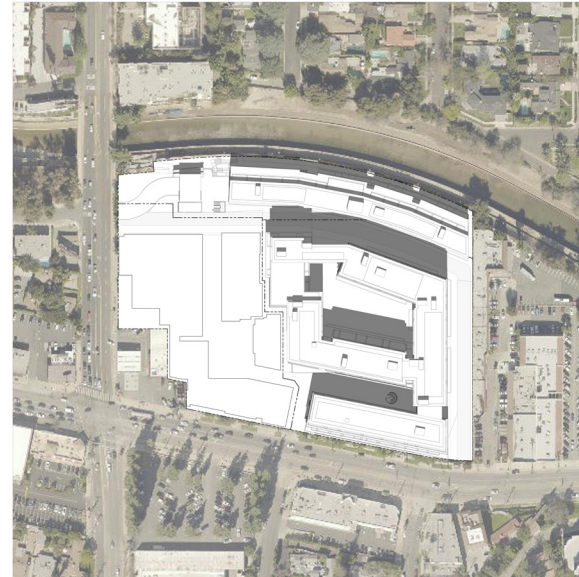
9:00 AM



10:00 AM



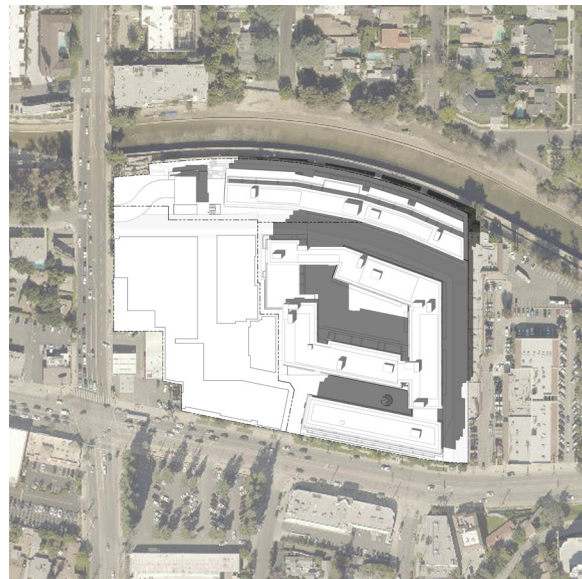
11:00 AM



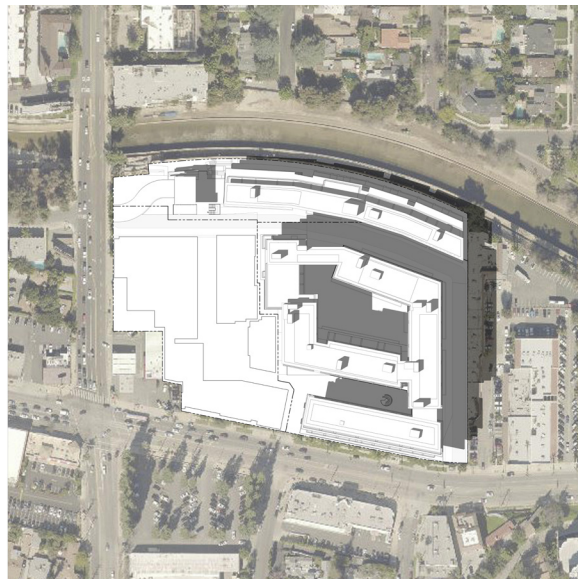
12:00 PM



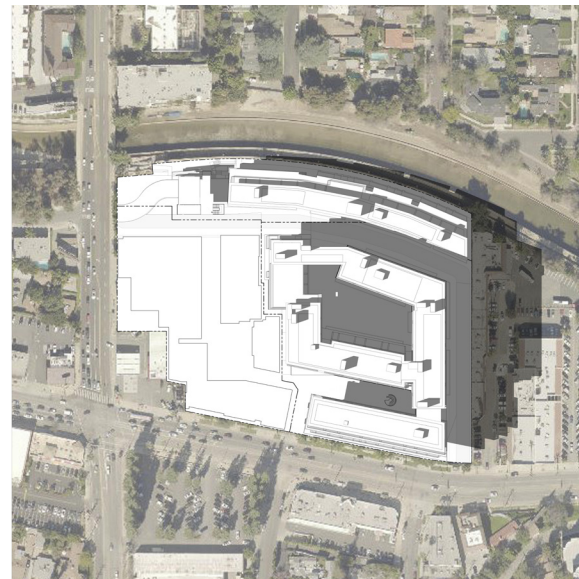
1:00 PM



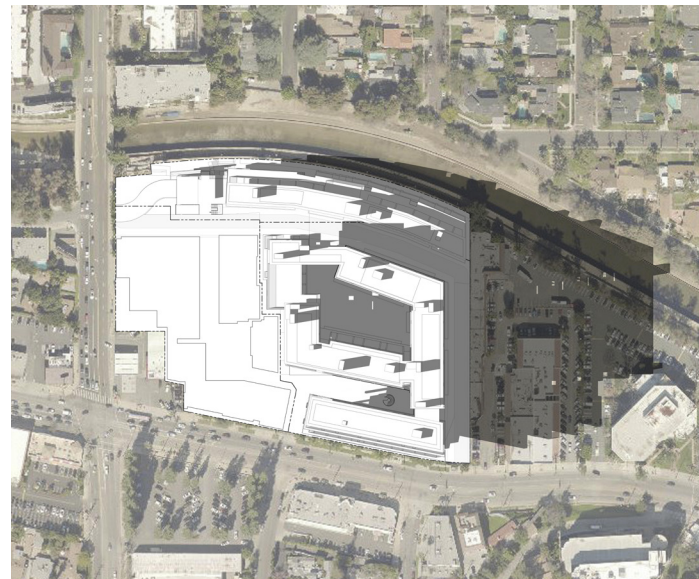
2:00 PM




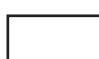
3:00 PM



4:00 PM



5:00 PM

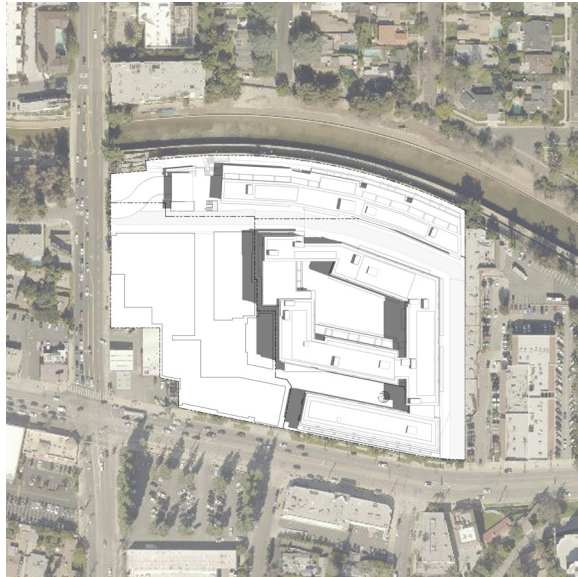
 SHADOW OF PROPOSED PROJECT
 PROJECT FOOTPRINT



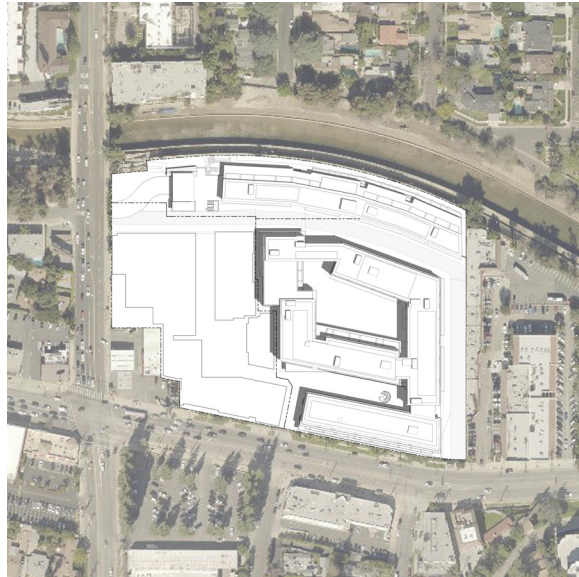
SUMMER SOLSTICE SHADOW STUDY - JUNE 20TH



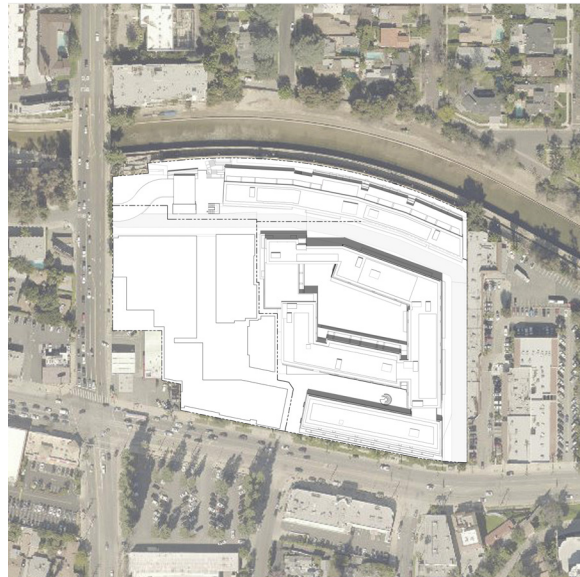
9:00 AM



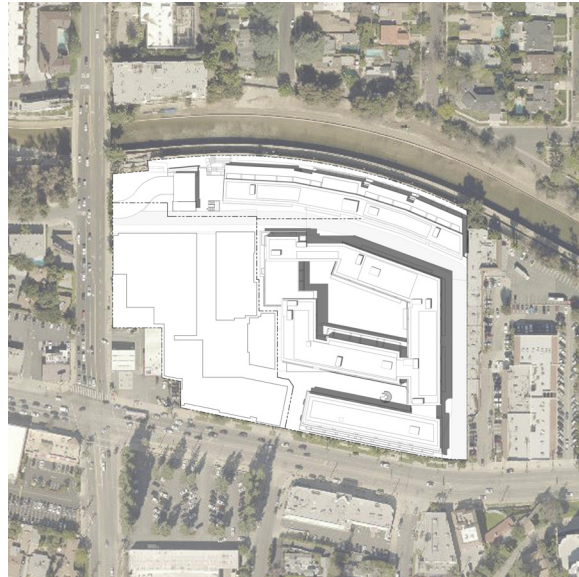
10:00 AM



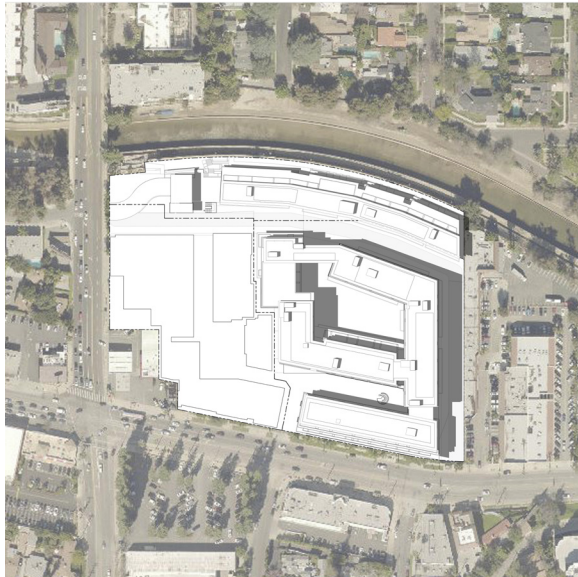
11:00 AM



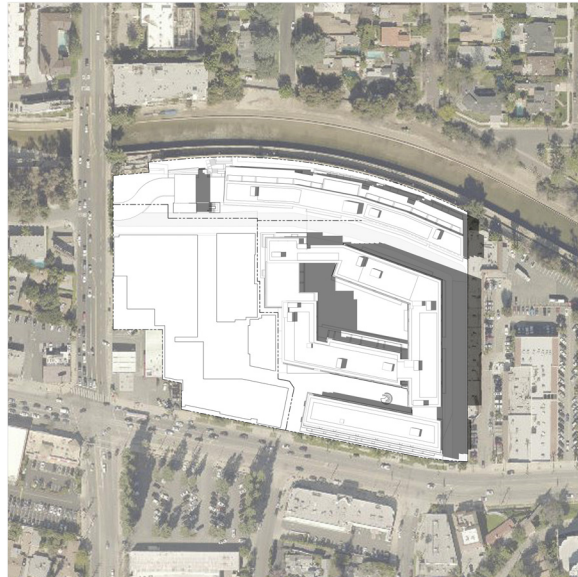
12:00 PM



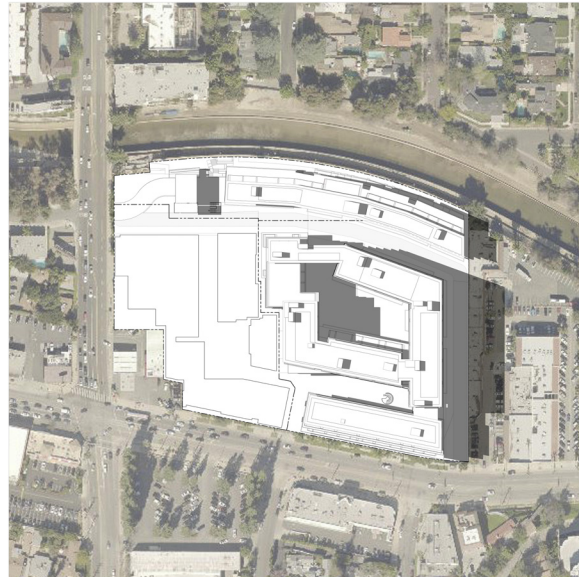
1:00 PM



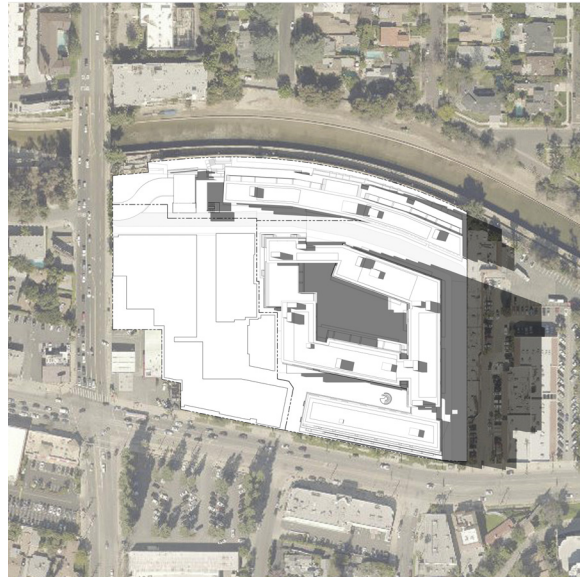
2:00 PM





3:00 PM

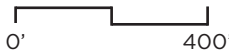


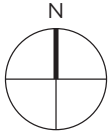
4:00 PM



5:00 PM

 SHADOW OF PROPOSED PROJECT
 PROJECT FOOTPRINT

 0' 400'

 N

AUTUMNAL EQUINOX SHADOW STUDY - SEPTEMBER 22ND



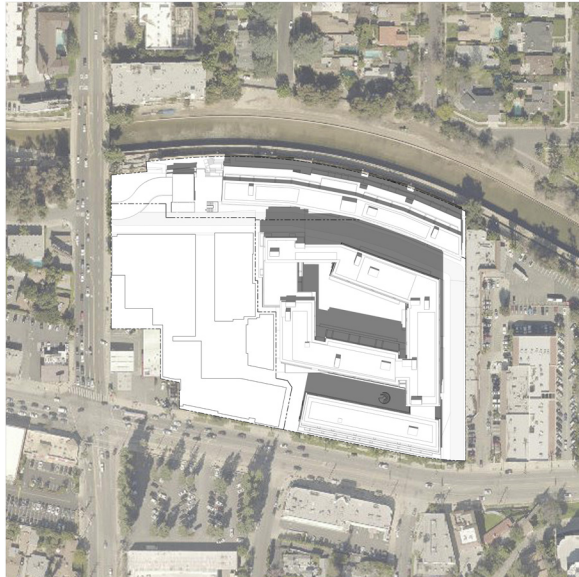
9:00 AM



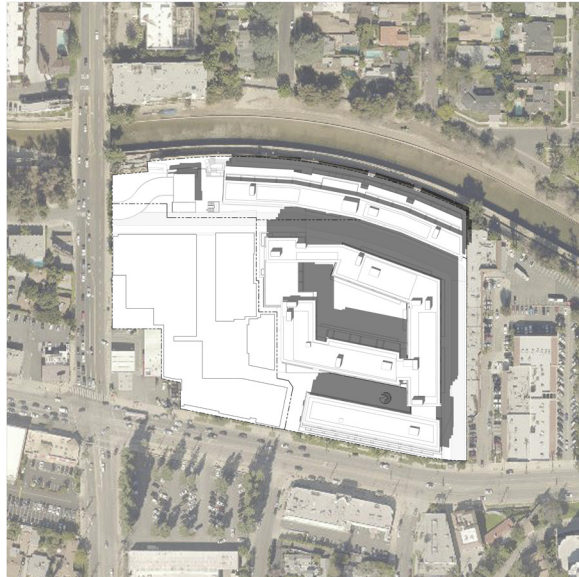
10:00 AM



11:00 AM



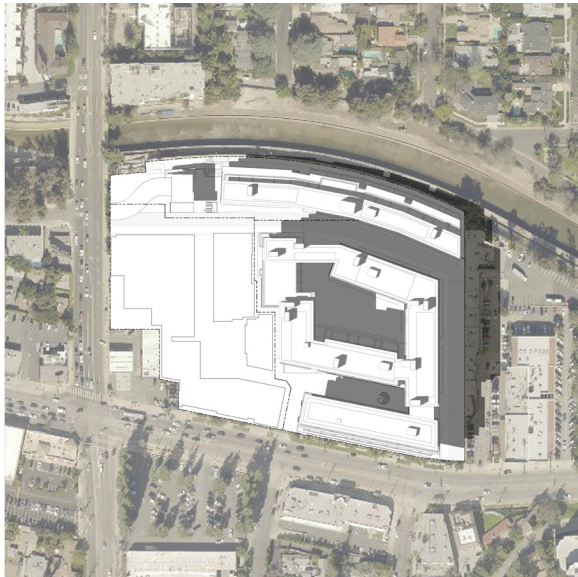
12:00 PM



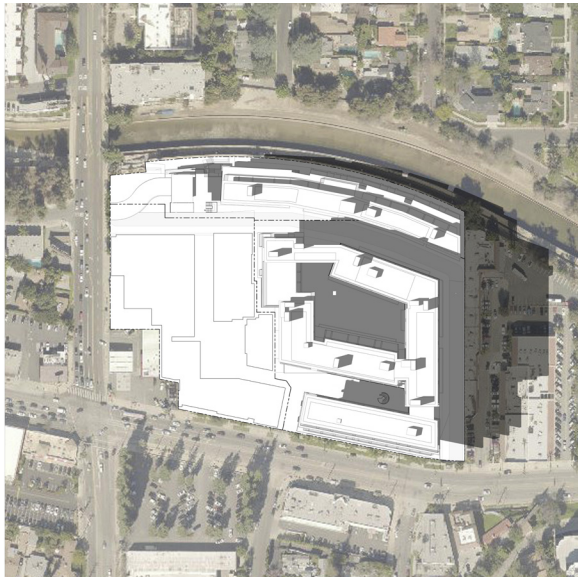
1:00 PM



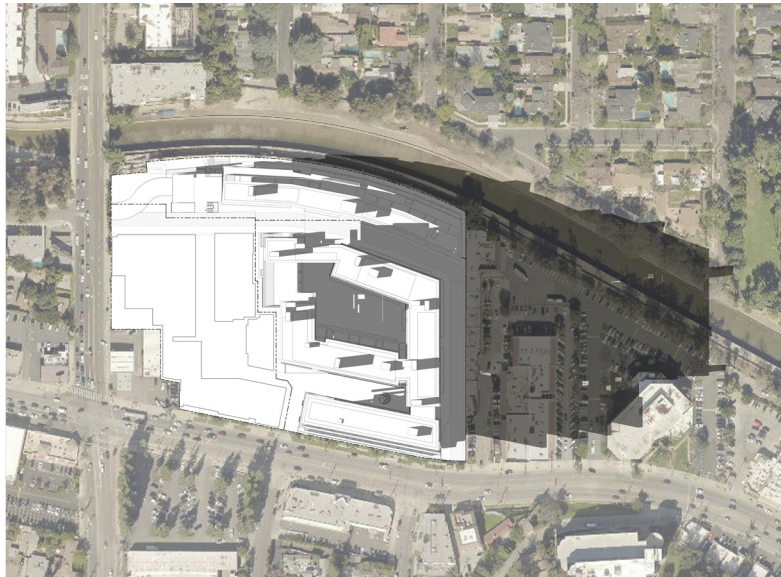
2:00 PM




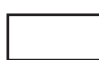
3:00 PM



4:00 PM



5:00 PM

 SHADOW OF PROPOSED PROJECT
 PROJECT FOOTPRINT

0' 400'



WINTER SOLSTICE SHADOW STUDY - DECEMBER 21ST



9:00 AM



10:00 AM



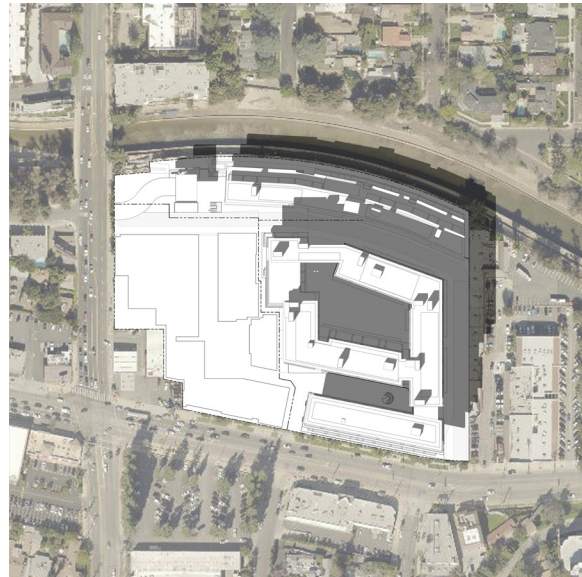
11:00 AM



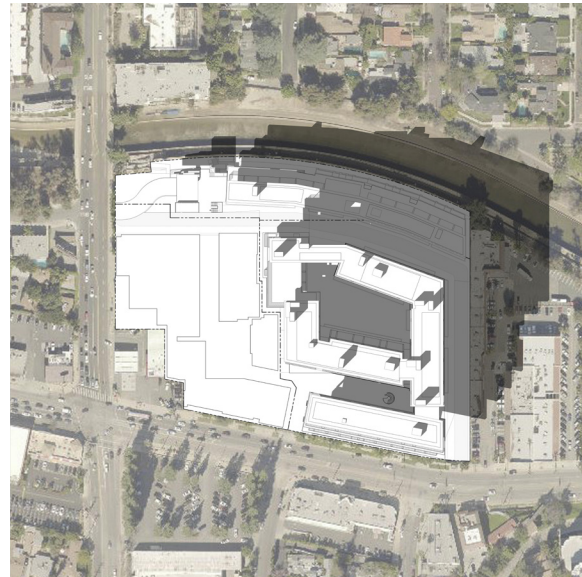
12:00 PM




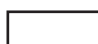
1:00 PM



2:00 PM



3:00 PM

 SHADOW OF PROPOSED PROJECT
 PROJECT FOOTPRINT

