

Appendix E

Archaeological Resources
Report Form

Lusk on Lusk Multi-Story Lab/ Office Development Project

Archaeological Resources Report Form

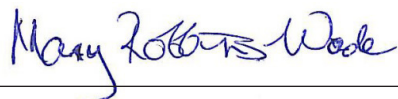
October 2022 | 08166.00002.001

Submitted to:

City of San Diego
Development Services Department
1222 First Avenue
San Diego, CA 92101

Prepared for:

Longfellow Real Estate Partners
11772 Sorrento Valley Road
San Diego, CA 92121



Mary Robbins-Wade
Cultural Resources Group Manager

Prepared by:

HELIX Environmental Planning, Inc.
7578 El Cajon Boulevard
La Mesa, CA 91942

This page intentionally left blank

TABLE OF CONTENTS

<u>Section</u>	<u>Page</u>
I. PROJECT DESCRIPTION AND LOCATION.....	1
II. SETTING.....	1
III. AREA OF POTENTIAL EFFECT (APE)	4
IV. STUDY METHODS	4
V. RESULTS OF STUDY	5
VI. RECOMMENDATIONS	6
VII. SOURCES CONSULTED DATE	7
VIII. CERTIFICATION.....	7
IX. ATTACHMENTS.....	8
X. CONFIDENTIAL APPENDICES (BOUND SEPARATELY)	8

LIST OF ATTACHMENTS

- A National Archaeological Database Information
- B Bibliography
- C Maps/Figures
 - Figure 1: Regional Location
 - Figure 2: USGS Topography
 - Figure 3: Aerial Photograph
- D Table of Previous Investigations Conducted within One Mile of the Project Area
- E Table of Previously Recorded Cultural Resources within One Mile of the Project Area
- F Site Photographs

CONFIDENTIAL APPENDICES (BOUND SEPARATELY)

- A Records Search Results
- B Native American Correspondence

This page intentionally left blank

I. PROJECT DESCRIPTION AND LOCATION

This report documents the cultural resources study for the Lusk on Lusk Multi-Story Lab/Office Development Project (project). The project includes four parcels, approximately 15.07 acres in total, located within the Mira Mesa Community Plan area of the City of San Diego (City), south of Los Peñasquitos Lagoon and east of Interstate (I-)5 (Figure 1, *Regional Location*). The project area is located within Section 4 of Township 15 South, Range 2 West, on the Del Mar U.S. Geological Survey (USGS) topographic quadrangle (Figure 2, *USGS Topography*). The proposed project parcels are situated south and west of Lusk Boulevard, south of the intersection of Lusk Boulevard and Pacific Center Boulevard, within Assessor's Parcel Numbers (APNs) 341-033-01-00 to -04-00 (Figure 3, *Aerial Photograph*).

The project proposes to redevelop the existing 15.07-acre property into multi-story, lab and office buildings as part of an interconnected science campus. The project proposes the construction of approximately 1,283,190 square feet (SF) of research and development (R&D) use, 30,000 SF of tenant-serving amenity space (such as gym facilities, bike facilities, large conference hall, public art, information and welcoming hub, coffee shop, and restaurant) and 1,060,406 SF of parking structures. The project site is currently occupied by 278,491 SF of office and light industrial uses split among six (6) buildings. All existing buildings will be removed as a part of the project. Access to the site is currently provided by existing driveways along Lusk Road. Grading is estimated to be a total export quantity of 175,000 CY.

This report details the methods and results of the cultural resources study for the project, which included a records search, a Sacred Lands File search, tribal outreach, a review of historic maps and aerial photographs, and a field survey with a Kumeyaay Native American monitor.

II. SETTING

Natural Environment (Past and Present)

The project area is located within the coastal plain of western San Diego County, where the climate is characterized as semi-arid steppe, with warm, dry summers and cool, moist winters (Hall 2007; Pryde 2004). This coastal plain lies along the westernmost area of the Peninsular Ranges geomorphic province of southern California. The project area is situated just south of Los Peñasquitos Canyon, approximately 2.95 miles from the Pacific Ocean to the west, with the Soledad Valley/Peñasquitos Lagoon approximately 3.2 miles to the northwest. Development in the project vicinity is characterized by a mixture of residential, commercial, and research and development facilities, as well as areas of open space/wildlands. The elevation of the project area ranges from approximately 298 to 351 feet above mean sea level (AMSL).

Geologically, the project area is underlain predominantly by the Scripps formation, dating to the middle Eocene (Kennedy and Tan 2008). The soils mapped for the project area consist almost entirely of Altamont clay, deep, well drained soils formed from material weathered from fine-grained sandstone and shale (Natural Resources Conservation Service 2022). A small amount of the project site contains soils from the Huerhuero series, a moderately well drained loam that has a clay subsoil and supports a vegetation of mostly tarweed, wild oats, star-thistle, red brome, Russian-thistle, and annual grasses and forbs (Bowman 1975: 54).

According to Bowman (1973:35), natural vegetation for the Altamont soil series is mainly chamise, black sage, sumac, and annual grasses and forbs. Various drainages in the vicinity, including Peñasquitos Creek, would have made fresh water easily accessible to native populations living in the area.

Prehistorically, the natural vegetation in the project area and vicinity likely consisted mostly of Diegan coastal sage scrub and southern mixed chaparral vegetation, possibly with areas of grassland intermittent in the scrub areas, and riparian and fresh water and salt marsh communities present along nearby slough and creek areas. The Diegan coastal sage scrub community would likely have covered most of the relatively level terrace areas, while southern mixed chaparral vegetation would have been present on the slopes of the ravines and canyons extending down from the terrace areas (Beauchamp 1986; Munz 1974).

Prehistorically, plants of the Diegan coastal sage scrub community likely included California sagebrush (*Artemisia californica*), white sage (*Salvia apiana*), flat-top buckwheat (*Eriogonum fasciculatum*), broom baccharis (*Baccharis sarothroides*), wild onion (*Allium haematochiton*), laurel sumac (*Malosma laurina*), San Diego sunflower (*Bahiopsis laciniata*), golden-yarrow (*Eriophyllum confertiflorum*), sawtooth goldenbush (*Hazardia squarrosa*), yucca (*Yucca schidigera*, *Hesperoyucca whipplei*), prickly pear cactus (*Opuntia* sp.), and scrub oak (*Quercus dumosa*). This community would likely have covered most of the mesa and canyons in the area, interspersed with areas of native grasslands (*Stipa*, *Elymus*, *Poa*, *Muhlenbergia*). In addition to some of the plants in the scrub community, plants characteristic of the southern mixed chaparral include toyon (*Heteromeles arbutifolia*), chamise (*Adenostoma* spp.), mission manzanita (*Xylococcus bicolor*), wart stemmed ceanothus (*Ceanothus verrucosus*), and mariposa lilies (*Calochortus* sp.). Prior to historic and modern activities, adjacent major drainages such as Peñasquitos Creek, likely contained extensive stands of riparian communities, with plants such as western sycamore (*Platanus racemosa*), Fremont cottonwood (*Populus fremontii*), coast live oak (*Quercus agrifolia*), and willow (*Salix* sp.) (Beauchamp 1986; Lightner 2006; Munz 1974). Plant species naturally occurring in the project area and vicinity are known to have been used by native populations for food, medicine, tools, ceremonial, and other uses, while many of the animal species living within these communities (such as deer, small mammals, and birds) would have been used by native inhabitants as well (Christenson 1990; Hedges and Beresford 1986; Luomala 1978).

Major wildlife species found in this environment prehistorically were coyote (*Canis latrans*); mule deer (*Odocoileus hemionus*); grizzly bear (*Ursus arctos*); mountain lion (*Puma concolor*); desert cottontail (*Sylvilagus audubonii*); jackrabbit (*Lepus californicus*); and various rodents, the most notable of which are the valley pocket gopher (*Thomomys bottae*), California ground squirrel (*Ostospermophilus beecheyi*), and dusky footed woodrat (*Neotoma fuscipes*) (Head 1972). Desert cottontails, jackrabbits, and rodents were very important to the prehistoric diet; deer were somewhat less significant for food, but were an important source of leather, bone, and antler (Christenson 1990; Luomala 1978).

Ethnohistory

Based on ethnographic data, two linguistically distinct populations, the Hokan-based Yuman-speaking peoples (Kumeyaay) and the Takic-speaking peoples (Luiseño), inhabited the San Diego County area. The name Luiseño derives from Mission San Luis Rey de Francia and has been used to refer to the Indigenous people associated with that mission, while the Kumeyaay people are also known as Ipai, Tipai, or Diegueño (named for Mission San Diego de Alcalá). Agua Hedionda Creek, extending east from the coast and located north of the project, has often been described as the division between the territories of the

Luiseño and the Kumeyaay people (Bean and Shipek 1978; Luomala 1978; White 1963), but Kroeber (1925) has the boundary farther south and encompassing the Escondido area.

The project area, in the southern area of the county, is in the traditional territory of the Kumeyaay people, whose population in San Diego in the late 1700s was estimated to be 20,000. The Kumeyaay lived in semi-sedentary, politically autonomous villages or rancherías. Most rancherías were the seat of a clan, although it is thought that, aboriginally, some clans had more than one ranchería and some rancherías contained more than one clan, often depending on the season within the year (Luomala 1978). Each village was comprised of many households, and groups of villages were part of a larger social system, referred to as a consanguineal kin group (cimuL) (Carrico 1998). Campsites and villages were chosen based on proximity to water, boulder outcrops, environmental protection, and availability of plants and animals (Luomala 1978). Consequently, many of the Kumeyaay villages or rancherías were located in river valleys and along the shoreline of coastal estuaries (Bean and Shipek 1978; Carrico 1998; Kroeber 1925).

Several major Kumeyaay villages were ethnographically documented along the southern coastal area. In closest proximity to project area was the village of Ystagua, located approximately 0.76 mile to the southwest, along Soledad Valley (Carrico and Taylor 1983). The village was still occupied at the time of early European contact as documented by the Spaniards who visited it in 1769 (Carrico 1977). Also, archaeological evidence indicates that this village location was occupied repeatedly over a period of several thousand years. Another nearby ethnographic village, also documented by the Spaniards in 1769, was the village of Jamo (Rinconada), located approximately 6.17 miles to the southwest of the project area, at the mouth of the Rose Canyon drainage on Mission Bay (Carrico 1977; Winterrowd and Cardenas 1987).

History

While Juan Rodriguez Cabrillo visited San Diego briefly in 1542, the beginning of the historic period in the San Diego area is generally given as 1769. In the mid-eighteenth century, Spain had escalated its involvement in California from exploration to colonization (Weber 1992) and in that year, a Spanish expedition headed by Gaspar de Portolá and Junípero Serra established the Royal Presidio of San Diego. Portolá then traveled north from San Diego seeking suitable locations to establish military presidios and religious missions in order to extend the Spanish Empire into Alta California.

Initially, both a mission and a military presidio were located on Presidio Hill overlooking the San Diego River. A small pueblo, now known as Old Town San Diego, developed below the presidio. The Mission San Diego de Alcalá was constructed in its current location five years later. The missions and presidios stood, literally and figuratively, as symbols of Spanish colonialism, importing new systems of labor, demographics, settlement, and economies to the area. Cattle ranching, animal husbandry, and agriculture were the main pursuits of the missions.

Although Mexico gained its independence from Spain in 1821, Spanish patterns of culture and influence remained for a time. The missions continued to operate as they had in the past, and laws governing the distribution of land were also retained in the 1820s. Following secularization of the missions in 1834, large ranchos were granted to prominent and well-connected individuals, ushering in the Rancho Era, with the society making a transition from one dominated by the church and the military to a more

civilian population, with people living on ranchos or in pueblos. With the numerous new ranchos in private hands, cattle ranching expanded and prevailed over agricultural activities.

American governance began in 1848, when Mexico signed the Treaty of Guadalupe Hidalgo, ceding California to the United States at the conclusion of the Mexican–American War. A great influx of settlers to California and the San Diego region occurred during the American Period, resulting from several factors, including the discovery of gold in the state in 1848, the end of the Civil War, the availability of free land through passage of the Homestead Act, and later, the importance of San Diego County as an agricultural area supported by roads, irrigation systems, and connecting railways. The increase in American and European populations quickly overwhelmed many of the Spanish and Mexican cultural traditions, and greatly increased the rate of population decline among Native American communities.

The project area is located within the Sorrento Valley neighborhood of the Mira Mesa community, so named for its similarity to the landscape of Sorrento, Italy (Sorrento Valley Town Council n.d.). In the early 1880s, work for the California Southern Railway connection to the Atlantic & Pacific Railway was underway. Chinese laborers camped at Temecula and Sorrento and worked long days to produce deep cuts through the hillsides (Middlebrook 1964). Following the completion of the railroad, many Chinese workers stayed on as section hands for track maintenance.

In 1887, a land sale advertised one-acre parcels within the area for \$100 and 50-foot home sites at \$50 each (Showley n.d.) The area remained relatively unchanged through the 1960s, when the development of the area and construction of the Interstate 805 began (Faigin 2021; Sorrento Valley Town Council n.d.). Over the following decades, the area transformed into the technology, life science, and pharmaceutical hub it is today.

III. AREA OF POTENTIAL EFFECT (APE)

The Area of Potential Effect (APE) for the project is established as the four parcels (APNs 341-033-01-00, 341-033-02-00, 341-033-03-00, and 341-033-04-00) located at 6370, 6440, 6450, 6540, 6640, and 6650 Lusk Boulevard, as shown in Figure 3. The total acreage of the APE for the project is approximately 15.07 acres.

IV. STUDY METHODS

Archival Research

HELIX obtained a records search from the South Coastal Information Center (SCIC) on May 26, 2022. The records search encompassed the proposed project area and a one-mile radius. The records search included the identification of previously recorded cultural resources, locations and citations for previous cultural resources studies, and a review of resources listed in the National Register of Historic Places (NRHP), California Register of Historical Resources (CRHR), California Historical Landmarks, California Points of Historic Interest, and City of San Diego Historical Resources Register. Record search maps are included as Confidential Appendix A, bound separately. Tables summarizing the records search results are provided as Attachments D and E.

Historical maps and aerial photographs were reviewed to assess the potential for historical structural resources and historical archaeological resources, including the 1903 and 1930 USGS La Jolla (1:62,500); 1943 USGS Del Mar (1:31,680); and 1953, 1967, 1975, and 1994 USGS Del Mar (1:24,000) topographic maps; as well as aerial photographs from 1953, 1964, 1978, 1983, 1984, 1989, and 2000 (NETR Online 2022).

Native American Contact Program

HELIX contacted the Native American Heritage Commission (NAHC) on May 25, 2022, to request a search of its Sacred Lands File. A response was received on June 23, 2022, and letters were sent on June 28, 2022, to the tribal contacts provided by the NAHC. Native American correspondence is included as Confidential Appendix B.

Field Survey

The project area was surveyed for cultural resources on May 27, 2022, by HELIX archaeologist James Turner and Kumeyaay Native American monitor Annette Osuna of Red Tail Environmental. As shown in Figure 3, the project APE consists of six structures and the associated parking lots, as well as grass and landscaped grounds. Therefore, standard parallel transects were not employed; the APE was walked and visibly inspected wherever there was open ground. The western half of the APE is approximately 20 feet lower than the eastern half, due to the APE's location on a slope.

V. RESULTS OF STUDY

Background Research

The SCIC has record of 153 previous cultural resource studies that have been performed within one mile of the project APE. Of these, eight were noted by the SCIC as overlapping with the current project site. These studies include a cultural resources study for a large planning area; several studies for the same project, including the project's draft environmental impact report; an evaluation for a telecom project; and a development permit.

The records search identified 46 previously recorded cultural resources within the one-mile search radius, none of which were recorded within the project APE. The prehistoric resources within the search radius consist of artifact scatters, shell middens, habitation sites, the village of Ystagua, and isolated artifacts. The historic resources include the remains of adobe structures, fencing, a historic orchard, and the Atchison, Topeka and Santa Fe (AT&SF) Railroad. Three multicomponent resources were also recorded and consist of structural remains with artifact scatters.

No structures are visible in the project area on the 1903 or 1930 La Jolla (1:62,500) topographic maps, though the Southern California Railroad is recorded to the west. The 1953 Del Mar (1:24,000) topographic map depicts the Coast Highway 101 west of the project—this highway would later become North Torrey Pines Road. The Southern California Railroad was also relabeled as the Atchison, Topeka, and Santa Fe Railway in the 1953 map. The subsequent 1967 and 1975 Del Mar topographic maps depict a trail or light-use road running near the project APE. This road is not present on the 1994 Del Mar topographic map; instead, a paved road and several structures are visible in the vicinity of the project area. The structure located at 6540 Lusk Blvd is recorded on this map.

Aerial photographs from 1953 and 1964 show the undeveloped nature of the project vicinity (NETR Online 2022). By the time the 1978 aerial was taken, some development is present in the region, including Interstates 5 and 805, though nothing is visible within the APE. The construction of modern-day Lusk Boulevard, as well as some buildings in the area, have started in the 1983 photograph, and the APE appears to have been mass graded by the time of the 1984 aerial photograph (NETR Online 2022). The 1989 aerial shows the completion of the buildings within the APE, as well as some of the structures within the vicinity. The lots to the north of the APE were graded sometime prior to the time the photograph was taken; these structures are completed in the 2000 aerial photograph.

Native American Contact Program

The NAHC indicated in a response dated June 23, 2022, that the search of their Sacred Lands File was completed for the project with negative results. A list of tribal contacts from whom additional information can be solicited was provided with the NAHC's response; letters were sent to these contacts on June 28, 2022. To date, no responses have been received. If responses are received, they will be forwarded to City staff. Native American correspondence is included as Confidential Appendix B.

Field Survey

Due to the developed nature of the project site, most of the ground surface within the APE was inaccessible or otherwise unviewable due to buildings, paved driveways and parking areas, and landscaped berms (Site Photographs; Attachment F). What ground surface was visible was located along the southern edge of the parking lots and consisted of tan sandy clay. This area was thoroughly checked for cultural resources, and none were observed.

Evaluation

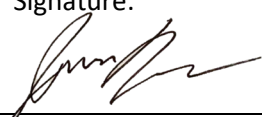

HELIX obtained an archaeological records search, requested a review of the NAHC's Sacred Lands File, and conducted outreach by letter to the tribal contacts provided by the NAHC. No resources were previously recorded within the project APE, and no cultural resources were observed during the field survey. Additionally, the Sacred Lands File review was negative, and no responses were received to the tribal outreach letters sent by HELIX. The project area was mass graded by the mid-1980s and appears to have been graded to below potentially cultural levels. Based on this, the project is expected to have no effect on archaeological resources. Potential effects to tribal cultural resources, if any, would be assessed by City staff in consultation with consulting tribes during AB 52 consultation.

VI. RECOMMENDATIONS

The project area was mass graded by the mid-1980s and appears to have been graded to below potentially cultural levels. No cultural resources have been identified within the project area. Based on this, the project would have no effect on archaeological resources, and no further measures are recommended.

Although there is also no evidence to suggest the presence of human remains, in the unlikely event that human remains are encountered during ground-disturbing activities, all work shall cease, and the County Medical Examiner shall be contacted, per the California Public Resources Code. Should the remains be identified as Native American, the NAHC shall be contacted within 48 hours to provide a most-likely descendant to determine appropriate actions.

VII. SOURCES CONSULTED	DATE
National Register of Historic Places	Month and Year: May 2022
California Register of Historical Resources	Month and Year: May 2022
City of San Diego Historical Resources Register	Month and Year: May 2022
Archaeological/Historical Site Records: South Coastal Information Center	Month and Year: May 2022
Other Sources Consulted: California Historical Landmarks (May 2022)	

VIII. CERTIFICATION	
Preparer: James Turner, M.A., RPA	Title: Staff Archaeologist
Signature: 	Date: 10/19/2022
Preparer: Mary Robbins-Wade, M.A., RPA	Title: Cultural Resources Group Manager
Signature: 	Date: 10/19/2022

IX. ATTACHMENTS

- A National Archaeological Database Information
- B Bibliography
- C Maps/Figures
 - Regional Location
 - USGS Topography
 - Aerial Photograph
- D Table of Previous Investigations Conducted within One Mile of the Project Area
- E Table of Previously Recorded Cultural Resources within One Mile of the Project
- F Site Photographs

X. CONFIDENTIAL APPENDICES (BOUND SEPARATELY)

- A Records Search Results
- B Native American Correspondence

Attachment A

National Archaeological Database
Information

NATIONAL ARCHAEOLOGICAL DATA BASE INFORMATION

Authors: Mary Robbins-Wade, M.A., RPA and James Turner, M.A., RPA

Consulting Firm: HELIX Environmental Planning, Inc., 7578 El Cajon Boulevard,
La Mesa, CA 91942, (619) 462-1515

Report Date: October 2022

Report Title: Archaeological Resources Report Form, Lusk on Lusk Multi-Story Lab/Office
Development Project

Prepared for: Longfellow Real Estate Partners

Contract number: HELIX Project No. 08166.00002.001

USGS quadrangle: Del Mar (7.5' series)

Acreage: Approximately 15.07 acres

Keywords: Archaeological survey; City of San Diego; Mira Mesa Community Plan area;
Township 15 South, Range 2 West; Lusk Boulevard; no archaeological
resources observed

Attachment B

Bibliography

Attachment B - Bibliography

Bean, Lowell J., and Florence Shipek

- 1978 Luiseño. In *California*, edited by Robert F. Heizer, pp. 550–563. Handbook of North American Indians, Vol. 8, William C. Sturtevant, general editor. Smithsonian Institution, Washington, D.C.

Beauchamp, R. Mitchell

- 1986 *A Flora of San Diego County, California*. Sweetwater River Press, National City.

Bowman, Roy H.

- 1973 *Soil Survey: San Diego Area*. United States Department of Agriculture. Beltsville, Maryland.

Carrico, Richard L.

- 1977a Portolá's 1769 Expedition and Coastal Native Villages of San Diego County. *The Journal of California Anthropology* 4(1): 30–41.

- 1998 Ethnohistoric Period. In *Prehistoric and Historic Archaeology of Metropolitan San Diego: A Historic Properties Background Study*. Draft document prepared by ASM Affiliates for Metropolitan Wastewater Public Works, San Diego, California.

Carrico, Richard L., and Clifford V. F. Taylor

- 1983 *Excavation of a Portion of Ystagua: A Coastal Valley Ipai Settlement*. Report on file at the South Coastal Information Center, San Diego State University.

Christenson, Lynne E.

- 1990 *The Late Prehistoric Yuman People of San Diego County, California: Their Settlement and Subsistence System*. Ph.D. dissertation, Department of Anthropology, Arizona State University, Tempe. University Microfilms, Ann Arbor.

Faigin, Daniel P.

- 2021 Interstate 805. *California Highways*. Electronic resource, available at <https://www.cahighways.org/ROUTE805.html>, accessed May 26, 2022.

Hall, Clarence A., Jr.

- 2007 *Introduction to the Geology of Southern California and its Native Plants*. University of California Press, Berkeley.

Head, Winfield S.

- 1972 *The California Chaparral: An Elfin Forest*. Naturegraph Publishers, Healdsburg, California.

Hedges, Ken, and Christina Beresford

- 1986 *Santa Ysabel Ethnobotany*. San Diego Museum of Man Ethnic Technology Notes No. 20.

City of San Diego
ARCHAEOLOGICAL RESOURCE REPORT FORM
Lusk on Lusk Multi-Story Lab/Office Development Project

Kennedy, Michael P., and Siang S. Tan

- 2008 *Geologic Map of the San Diego 30 x 60-Minute Quadrangle, California*. Digital preparation by: Kelly R. Bovard, Anne G. Garcia, Diane Burns and Carlos I. Gutierrez. California Department of Conservation, California Geological Survey.

Kroeber, A.L.

- 1925 *Handbook of California Indians. Bureau of American Ethnology Bulletin 78*. Republished in 1970 by the California Book Company, Berkeley, CA and the Filmer Brothers Press, Taylor & Taylor, San Francisco, CA.

Lightner, James

- 2006 *San Diego Native Plants*. San Diego Flora, San Diego.

Luomala, Katherine

- 1978 Tipai-Ipai. In *California*, edited by Robert F. Heizer, pp. 592-609. *Handbook of North American Indians*, vol. 8. William C. Sturtevant, general editor. Smithsonian Institution, Washington, D.C.

Middlebrook, R. P.

- 1964 The Chinese at Sorrento. *The Journal of San Diego History* (10)1.

Munz, Philip A.

- 1974 *A Flora of Southern California*. University of California Press, Berkeley.

Natural Resources Conservation Service

- 2022 Web Soil Survey. Electronic document available at <http://websoilsurvey.sc.egov.usda.gov/App/HomePage.htm>, accessed on May 25, 2022.

NETR Online

- 2022 *Historic Aerials*. Nationwide Environmental Title Research, LLC. Electronic document available at: <http://www.historicaerials.com>, accessed May 26, 2022.

Pryde, Philip R.

- 2004 *San Diego: An Introduction to the Region*. Sunbelt Publications; 4th edition.

Showley, Roger

- n.d. Sorrento Mesa and Valley: From railroad roots to a superconductor future. *The San Diego Union Tribune*. Electronic Resource, available at <https://www.sandiegouniontribune.com/almanac/san-diego-north/sd-me-almanac18-sorrento-mesa-sorrento-valley-20180622-story.html>, accessed May 26, 2022.

Sorrento Valley Town Council

- n.d. Sorrento Valley History, 1800's – 2021. Electronic document, available at http://www.sorrentovalleytc.com/uploads/2/3/4/9/23490566/sorrento_valley_brief_history_version_sent_to_mm_cpu_wo_comments.pdf, accessed May 26, 2022.

City of San Diego
ARCHAEOLOGICAL RESOURCE REPORT FORM
Lusk on Lusk Multi-Story Lab/Office Development Project

Weber, David

1992 *The Spanish Frontier in North America*. Yale University Press.

White, Raymond C.

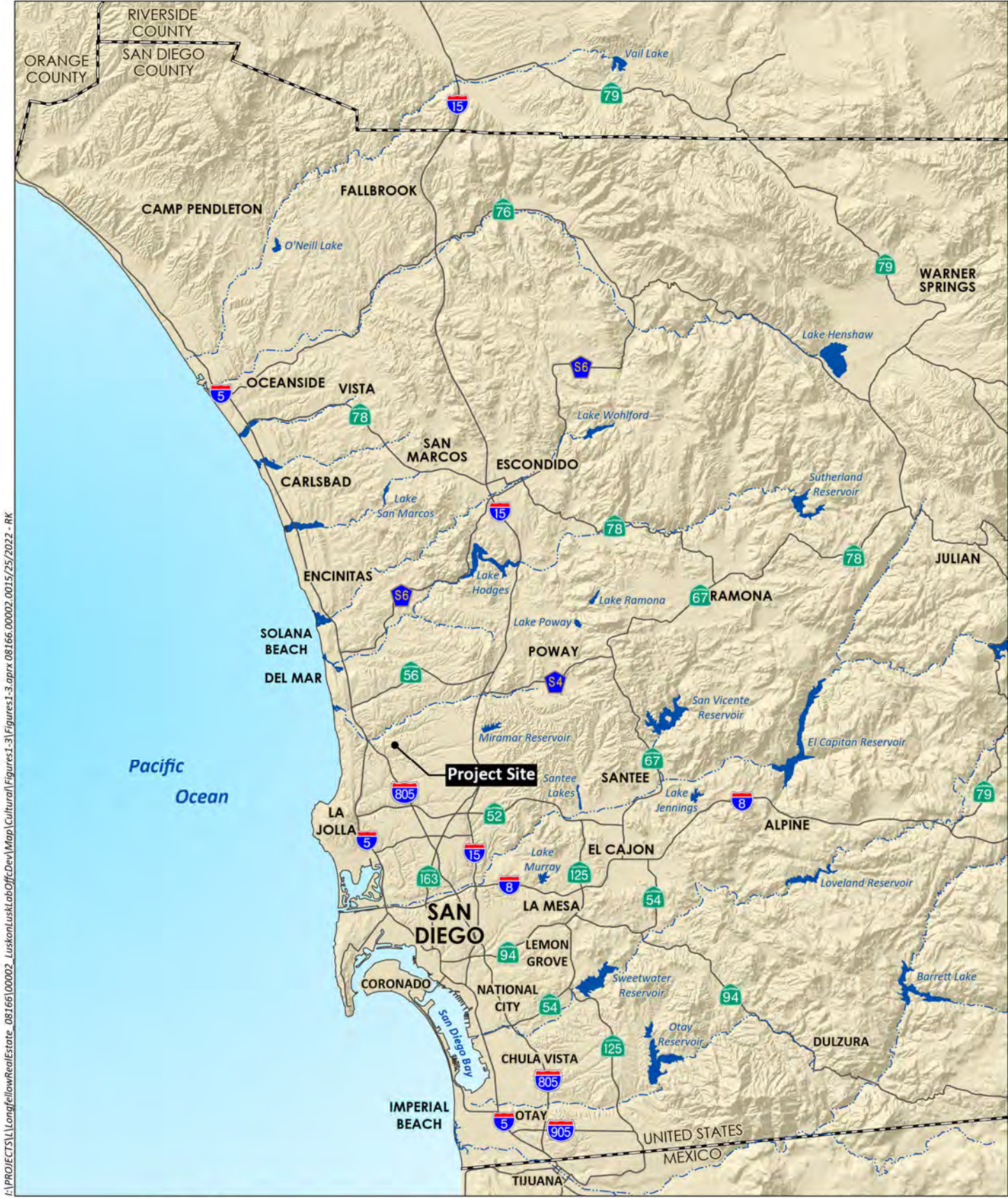
1963 Luiseño Social Organization. *University of California Publications in American Archaeology and Ethnology* 48(2):91-194.

Winterrowd, Cathy L., and D. Seán Cárdenas

1987 *An Archaeological Indexing of a Portion of the Village of La Rinconada de Jamo SDI-5017 (SDM-W-150)*. Report prepared by RBR Associates, Inc., San Diego. Report on file at the South Coastal Information Center, San Diego State University.

Attachment C

Maps/Figures



F:\PROJECTS\Long\YellowRealEstate_08166\00002_LuskonLuskLab\OffDev\Map\Cultural\Figures.1-3.aprx 08166.00002.0015/25/2022 - RK

Source: Base Map Layers (SanGIS, 2016)



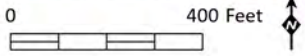
I:\PROJECTS\Long\RealEstate_08166\00002_LuskOnLuskLab\Dev\Map\Cultural\Figures-3\Figures-3.aprx 08166.00002.0015/25/2022 - RK

Source: Del Mar 7.5' Quad (USGS)



F:\PROJECTS\Longfellow\RealEstate_08156100002_LuskonLuskLab\OffDev\Map\Cultural\Figures.1-3\Figures.1-3.aprx 08156.00002.0015/25/2022 - RK

Project Site



Source: Aerial (SanGIS, 2019)

Attachment D

Table of Previous Investigations
Conducted within One Mile of the
Project Area

Report List

Report No.	Other IDs	Year	Author(s)	Title	Affiliation	Resources
SD-00012	; Voided - MSA 09	1979	MULTI SYSTEMS ASSOCIATES, INC	SORRENTO VALLEY INDUSTRIAL PARK UNIT 8	MULTI SYSTEMS ASSOCIATES, INC	37-005826
SD-00057	NADB-R - 1120057; Voided - ADAMS 03	1979	Adams, Therese E. and Charles S. Bull	A Report of the Mira Mesa Boulevard Cultural Resource Survey.	RECON	
SD-00069	NADB-R - 1120069; Voided - APPLE 06	1980	Apple, Stephen A. and Keith R. Olmo	Cultural Resources of Sorrento Corporate Park	MSA, Inc.	
SD-00210	NADB-R - 1120210; Voided - CARDENAS05	1985	Cardenas, Sean D. and Mary Robbins Wade	Cultural Resource Inventory and Significance Assessment: Eastgate Industrial Center.	RBR & Associates	37-010249, 37-010250, 37-010251
SD-00279	NADB-R - 1120279; Voided - CARRICO58	1978	Carrico, Richard	Archaeological Study of the Proposed Wong Sorrento Industrial Buildings San Diego	Westec Services, Inc.	37-001010, 37-001064, 37-001087, 37-001106, 37-004513, 37-004609
SD-00283	NADB-R - 1120283; Voided - CARRICO65	1978	Carrico, Richard	Archaeological Study of the Roselle Street/Shell Oil Project.	WESTEC Services, Inc.	37-001010, 37-001064, 37-001087, 37-001106, 37-004513, 37-004609, 37-004647, 37-005193
SD-00292	NADB-R - 1120292; Voided - CARRICO48	1977	Carrico, Richard	Archaeological Study of the Sorrento Valley Road Pipeline Project.	WESTEC Services, Inc.	37-001010, 37-001064, 37-001087, 37-001106
SD-00328	NADB-R - 1120328; Voided - CARRICO80	1975	Carrico, Richard L.	Rimbach Property Archaeology Report	WESTEC Services, Inc.	
SD-00344	NADB-R - 1120344; Voided - CARRICO104	1979	Carrico, Richard and Richard Eckhardt	Archaeological Study of the Proposed Gaines Sorrento Industrial Park San Diego, California.	WESTEC Services, Inc.	37-001010, 37-001064, 37-001106, 37-004513, 37-004609, 37-004647, 37-005193, 37-005443
SD-00419	NADB-R - 1120419; Voided - CARRICO136	1982	Carrico, Richard	Appendix E Archaeological and Historical Survey Report Sorreto Hills Community Plan.	WESTEC Services, Inc.	37-000962
SD-00425	NADB-R - 1120425; Voided - CARRICO127	1980	Carrico, Richard L. and Keith D. Rhodes	Archaeological Survey of the Ridge.	WESTEC Services, Inc.	37-001010, 37-001064, 37-001087, 37-001106, 37-004513, 37-004609, 37-004647, 37-005161, 37-005193, 37-005194, 37-005195, 37-005196, 37-005197, 37-005198, 37-005201, 37-005202, 37-005607, 37-005611, 37-005613, 37-005826, 37-006946, 37-006947, 37-006948, 37-006949, 37-006950, 37-006952, 37-006953, 37-007439, 37-007440
SD-00511	NADB-R - 1120511; Other - 11101-148800; Voided - CUPPLES 52	1974	Cupples, Sue Ann	An Archaeological Survey Report of Project: 11-SD-80515 P.M. 28.3-28.9 130.4-36.3	Dr. Paul H. Ezell	37-000197, 37-000531, 37-000613, 37-000962, 37-000976, 37-001010

Report List

Report No.	Other IDs	Year	Author(s)	Title	Affiliation	Resources
SD-00648	NADB-R - 1120648; Voided - CARRICO24	1977	Carrico, Richard	Archaeological Study of the Norwich-Kaiser-Dentt Industrial Lot	Westec Services, Inc.	37-001010, 37-001087, 37-001106, 37-004513, 37-004609, 37-004647, 37-005193, 37-005201
SD-00680	NADB-R - 1120680; Voided - HECTOR 20	1986	Hector, Susan and Sue Wade	Excavation of a Portion of SDi-4513 The Rimbach Site City of San Diego, California.	RECON	37-004513, 37-004609
SD-00682	NADB-R - 1120682; Voided - HECTOR 18	1986	Hector, Susan	Archaeological Investigations at SDM-W-1440/SDi-5198 a Special Use Site on Mira Mesa San Diego, California.	RECON	37-005198
SD-00683	NADB-R - 1120683; Voided - HECTOR 17	1984	Hector, Susan	Regional Archaeology Papers Number 1:Excavation and Analysis of the Historic and Prehistoric Components of Archaeological Site SDM-W-1439A.	RECON	37-005197
SD-00750	NADB-R - 1120750; Voided - CARRICO129	1980	Carrico, Richard L. and Clifford V. F. Taylor	Phase I Test Excavations of Portions of SDi-5443 Situated on Hallmark Circuits, Inc. Property ***REPORT MISSING***	WESTEC Services, Inc.	37-005443
SD-00809	NADB-R - 1120809; Voided - LAYLANDE14	1985	Laylander, Don	Archaeological Survey Report for Proposed Widening and Ramp Construction Route I-5/Carmel Valley Road San Diego County.	Caltrans	37-001010, 37-001103, 37-004615, 37-004647, 37-008121
SD-00852	NADB-R - 1120852; Voided - KYLE 13	1989	Kyle, Carolyn, Dennis Gallegos, and Richard Carrilo	Village of Ystagua (Rimbach SDi-4513) Testing, Significance, and Management	ERC Environmental and Energy Services, Co.	37-004513, 37-004609, 37-005443
SD-00958	NADB-R - 1120958; Voided - GALLEGO 57	1988	Kyle, Carolyn, Dennis Gallegos, and Richard Carrico	Cultural Resource Survey and Test for the Allred-Collins Industrial Park	WESTEC Services, Inc.	37-008647, 37-010971
SD-01119	NADB-R - 1121119; Voided - HECTOR 16	1985	Hector, Susan M.	Excavations at SDi-4609 A Portion of the Village of Ystagua Sorrento Valley, California.	RECON	37-004609
SD-01180	NADB-R - 1121180; Voided - HECTOR 77	1987	Hector, Susan	Archaeological Monitoring on Sorrento Valley Road.	RECON	37-004513
SD-01251	NADB-R - 1121251; Voided - JOHNSON 13	1980	Johnson, Melissa J.	Archaeological Survey Report for Proposed Mitigation Parcel Easements City of San Diego SD 015, R12.0/14.8 SD163, 10.4/11.8 (11825 11206 048191).	CALTRANS	
SD-01341	NADB-R - 1121341; Voided - POLAN 20	1981	Polan, H. Keith	Parcel "D": An Archaeological Assessment.	Heritage Environmental Services	
SD-01397	NADB-R - 1121397; Voided - EIDSSNESS05	1979	Eidsness, Janet, Douglas Flower, Darcy Ike, and Linda Roth	Archaeological Investigation of the Sorrento Valley Road Pipeline Project Limited Linear Test, City of San Diego SDM-W-654	Flower, Ike, and Roth Archaeological Consultants	
SD-01535	NADB-R - 1121535; Voided - SUTTON 6	1978	Sutton, Mark Q. and Paul G. Chace	An Archaeological Survey of the Rancho Sorrento Property, City of San Diego	Paul G. Chace and Associates	

Report List

Report No.	Other IDs	Year	Author(s)	Title	Affiliation	Resources
SD-01625	NADB-R - 1121625; Voided - WESTEC 3	1977	WESTEC Services, Inc.	Cultural Resources of the West Mira Mesa Planning Area	WESTEC Services, Inc.	
SD-01666	NADB-R - 1121666; Voided - WADE 12A	1986	Wade, Sue A.	Gonzales Canyon Sewer Line	RECON	
SD-01794	NADB-R - 1121794; Voided - SCHAEFER02	1987	Schaefer, Jerry and Michael C. Elling	An Assessment of Cultural Resources in Los Penasquitos Canyon Reserve San Diego, California	Consulting Archaeologists	37-000392, 37-000414, 37-000415, 37-000531, 37-001087, 37-001106, 37-005028, 37-005031, 37-005032, 37-005033, 37-005034, 37-005035, 37-005161, 37-005198, 37-005201, 37-005202, 37-005219, 37-005220, 37-005221, 37-005378, 37-005385, 37-005387, 37-005826, 37-008098, 37-008099, 37-008100, 37-008101, 37-008102, 37-008103, 37-008104, 37-008105, 37-008106, 37-008107, 37-008108, 37-008109, 37-008110, 37-008111, 37-008112, 37-008113, 37-008115, 37-008116, 37-008117, 37-008118, 37-008119, 37-008120, 37-008121, 37-008123, 37-008124, 37-008125, 37-008396, 37-008970, 37-008971, 37-009241, 37-009869
SD-01795	NADB-R - 1121795; Voided - RECON 84	1981	RECON-Regional Environmental Consultants	Archaeological and Biological Survey Reports for the San Andres Project County of San Diego	RECON	
SD-01851	NADB-R - 1121851; Voided - HECTOR 62	1989	Hector, Susan	Cultural Resources Survey of the San Diego Commuter Rail Project	RECON	
SD-01852	NADB-R - 1121852; Voided - HECTOR 61	1989	Hector, Susan and McMillian Davis	Cultural Resources Survey of the Lusk-Lopez Ridge Property San Diego, California	RECON	
SD-02059	NADB-R - 1122059; Voided - CITYSD 07	1980	City of San Diego	Draft Environmental Impact Report Sorrento Corporate Park	City of San Diego	
SD-02068	NADB-R - 1122068; Voided - CITYSD13	1982	City of San Diego	Sorrento II & III Land Development Permit	City of San Diego	
SD-02316	NADB-R - 1122316; Voided - SMITHB 203	1991	SMITH, BRIAN F.	THE RESULTS OF ARCHAEOLOGICAL STUDY FOR THE SDG&E PENASQUITOS-GENESSEE 69 KV TRANSMISSION LINE PROJECT, CITY OF SAN DIEGO	BRIAN F. SMITH AND ASSOCIATES	

Report List

Report No.	Other IDs	Year	Author(s)	Title	Affiliation	Resources
SD-02580	NADB-R - 1122580; Voided - GALLEGO133	1993	GALLEGOS, DENNIS and IVAN STRUDWICK	SURVEY AND TEST REPORT FOR THE RANCHO PENASQUITOS PIPELINE (P5E11) COUNTY WATER AUTHORITY COUNTY SAN DIEGO	GALLEGOS AND ASOCIATES	37-000149, 37-004839, 37-004841, 37-005104, 37-005106, 37-005378, 37-006672, 37-011982, 37-011983, 37-012661, 37-012664, 37-012667, 37-012668, 37-012674, 37-012688
SD-02697	NADB-R - 1122697; Voided - GROSS 27	1990	GROSS, TIMOTHY and MARY ROBBINS-WADE	CULTURAL RESOURCE SURVEY AND ASSESSMENT FOR THE SORRENTO VALLEY ROAD REALIGNMENT AND UTILITY IMPROVEMENTS, SAN DIEGO, CALIFORNIA	AFFINIS	37-000197, 37-001103, 37-004647
SD-02770	NADB-R - 1122770; Other - 92041068; Voided - CITYSD 48	1993	CITY OF SAN DIEGO	SORRENTO HILLS COMMUNITY PLAN AMENDMENT/TORRY RESERVE HEIGHTS/SORRENTO HILLS PHASE 11, UNIT 4. SAN DIEGO COUNTY, CALIFORNIA	CITY OF SAN DIEGO	37-000531, 37-008117, 37-010685
SD-02839	NADB-R - 1122839; Other - 2117A; Voided - COLLETT03	1989	COLLETT, RUSSELL O. and SUE A. WADE	CULTURAL RESOURCES SURVEY OF THE EL CAMINO MEMORIAL PARK PROPERTY	RECON	
SD-02890	NADB-R - 1122890; Other - 2117A; Voided - WADE 54	1993	WADE, SUE A. and RUSSELL COLLETT	CULTURAL RESOURCE SURVEY OF THE EL CAMINO MEMORIAL PARK PROPERTY IN SAN DIEGO, CALIFORNIA.	RECON	
SD-03045	NADB-R - 1123045; Voided - LOHSTRO01	2004	LOHSTROH, STEPHANIE	HISTORICAL RESOURCES SURVEY AND REPORT FOR THE LOS PENASQUITOS NORTH WETLAND CREATION PROJECT - REVISED	ASM AFFILIATES	
SD-03237	NADB-R - 1123237; Other - 93101080; Voided - CITYSD 101	1994	MONSERRATE, LAWRENCE C.	PENASQUITOS RELIEF TRUCK SEWER CITY COUNCIL APPROVAL	CITY OF SAN DIEGO	37-008124, 37-013492
SD-03248	NADB-R - 1123248; Other - R-1782Z; Voided - CHEEVER50	1996	CHEEVER, DAYLE	CULTURAL RESOURCE SURVEY AND SIGNIFICANCE ASSESSMENT FOR A PORTION OF CA-SDI-12405H, CARMEL VALLEY PRECISE PLAN AREA	RECON	37-012405
SD-03304	NADB-R - 1123304; Voided - CHEEVER52	1993	CHEEVER, DAYLE	CULTURAL RESOURCE SURVEY OF THE TORREY RESERVE TERRACE PROJECT AND INCLUDES THE MITIGATION MONITORING AND REPORTING PROGRAM	RECON	37-001106, 37-005826, 37-008116, 37-008117
SD-03349	NADB-R - 1123349; Voided - CITYSD 91	1998	CITY OF SAN DIEGO	PROPOSED MITIGATED NEGATIVE DECLARATION FOR EASTGATE ACRES: VESTING TENTATIVE PARCEL MAP/REZONE/PLANNED INDUSTRIAL DEVELOPMENT PERMIT/RESOURCE PROTECTION ORDINANCE	CITY OF SAN DIEGO	

Report List

Report No.	Other IDs	Year	Author(s)	Title	Affiliation	Resources
SD-03350	NADB-R - 1123350; Voided - KIRKISH03	1997	KIRKISH, ALEX N. and BRIAN F. SMITH	ARCHAEOLOGICAL SURVEY OF THE EASTGATE ACRES PROJECT	BRIAN F. SMITH ASSOCIATES	
SD-03518	NADB-R - 1123518; Voided - PIERSON11	1999	PIERSON, LARRY J and TODD BAKER	AN ARCHAEOLOGICAL SURVEY OF THE CUSHMAN PROJECT, NORTHWEST END OF TOWNE CENTER DRIVE, SAN DIEGO, CALIFORNIA	BRIAN F SMITH AND ASSOCIATES	
SD-03589	NADB-R - 1123589; Other - LDR NO. 99- 0578; Voided - HARRISN 01	1999	HARRIS, NINA M., TRACY STROPES, and DENNIS R. GALLEGOS	CULTURAL RESOURCE MONITORING REPORT FOR THE VILLAGE OF YSTAGUA WATER MAIN BREAK CITY OF SAN DIEGO, CALIFORNIA	CITY OF SAN DIEGO, WATER DEPARTMENT	
SD-03674	NADB-R - 1123674; Voided - PIGNIOLO54	1999	PIGNIOLO, ANDREW R. and MICHAEL BAKSH	CULTURAL RESOURCES INVENTORY OF THE LOS PENASQUITOS CANYON REVEGETATION PROJECT, CITY OF SAN DIEGO, CALIFORNIA	CITY OF SAN DIEGO, ENGINEERING AND CAPITAL PROJECTS	
SD-03683	NADB-R - 1123683; Other - AFFINIS JOB NO. 1417; Voided - ALTER40	1999	ALTER, RUTH	RESULTS OF THE HISTORIC BUILDING ASSESSMENT FOR 1128 OLIVER AVENUE, SAN DIEGO, CALIFORNIA	RANDALL DORRIS	
SD-03720	NADB-R - 1123720; Voided - SCHROTH17	1996	SCHROTH, ADELLA B, DENNIS R. GALLEGOS, PETI MCHENRY, and NINA HARRIS	HISTORICAL/ARCHAEOLOGICAL SURVEY REPORT FOR THE WATER REPURIFICATION PIPELINE AND ADVANCED WATER TREATMENT FACILITY, CITY OF SAN DIEGO, CALIFORNIA	TETRA TECH, INC	
SD-03787	NADB-R - 1123787; Voided - PIERSON21	2000	PIERSON, LARRY J	AN ARCHAEOLOGICAL SURVEY OF THE VISTA SORRENTO PARKWAY PROJECT, SAN DIEGO, CALIFORNIA	CITY OF SAN DIEGO PLANNING AND DEVELOPMENT REVIEW DEPARTMENT	
SD-03896	NADB-R - 1123896; Voided - DUKE04	2000	CURT DUKE	CULTURAL RESOURCE ASSESSMENT FOR PACIFIC BELL WIRELESS FACILITY SD 392-03, COUNTY OF SAN DIEGO, CALIFORNIA	CURT DUKE, LSA ASSOCIATES, INC.	37-005198
SD-04074	NADB-R - 1124074; Voided - PIERSON30	1999	PIERSON, LARRY and R. TODD BAKER	AN ARCHAEOLOGICAL SURVEY OF THE CUSHMAN PROJECT, NORTHWEST END OF TOWNE CENTRE DRIVE, SAN DIEGO, CA, 92121	BRIAN F. SMITH AND ASSOCIATES	
SD-04297	NADB-R - 1124297; Voided - ECKHARDT14	1978	ECKHARDT, LESLEY C.	ARCHAEOLOGICAL/ HISTORICAL SURVEY OF THE AERO WORLD THEME PARK	WESTEC SERVICES, INC	37-005161, 37-005195, 37-005196, 37-005198

Report List

Report No.	Other IDs	Year	Author(s)	Title	Affiliation	Resources
SD-04345	NADB-R - 1124345; Voided - MORIARTY10	1977	MORIARTY, ROBERT JAMES III	ARCHAEOLOGICAL SURVEY OF MIRA MESA INDUSTRIAL PARK SOLEDAD CANYON AREA CITY OF SAN DIEGO, CA	JAMES ROBERT MORIARTY III	
SD-04398	NADB-R - 1124398; Voided - KYLE101	1995	KYLE, CAROLYN	NORTH TORREY PINES BRIDGE OVER LOS PENASQUITOS CREEK	GALLEGOS AND ASSOCIATES	
SD-04414	NADB-R - 1124414; Voided - ASM22	1979	ASM, INC.	ARCHAEOLOGY SURVEY AND REPORT SVIP#8 COUNTY OF SAN DIEGO (VIA SORRENTO VALLEY INDUSTRIAL PARK #8)	ASM, INC.	37-005826
SD-04480	NADB-R - 1124480; Voided - ROSEN48	1987	ROSEN, MARTIN	2ND SUPPLEMENTAL HISTORIC PROPERTY SURVEY - 11-SD-5, P.M. R29.51	ROSEN, M.	37-000197, 37-001103, 37-004513, 37-004615, 37-004627, 37-004629, 37-008121, 37-010143, 37-010144
SD-04490	NADB-R - 1124490; Voided - HIX1	1995	HIX, ANN B. and CITY OF SAN DIEGO	PUBLIC NOTICE OF DRAFT ENVIRONMENTAL IMPACT REPORT FOR TORREY RESERVE TERRACES	CITY OF SAN DIEGO	
SD-04697	NADB-R - 1124697; Voided - SHEPARD01	2000	SHEPARD, RICHARD S. and ROGER D. MASON	CULTURAL RESOURCES RECORDS SEARCH & SURVEY REPORT FOR THE SUNSET POINTE PROPERTY LAS PENASQUITOS AREA, SAN DIEGO COUNTY, CALIFORNIA	CHAMBERS GROUP INC.	
SD-04715	NADB-R - 1124715; Voided - CITYSD167	1992	CITY OF SAN DIEGO	APPENDICES TO THE DRAFT ENVIRONMENTAL IMPACT REPORT FOR THE LOS PENASQUITOS CANYON PRESERVE MASTER PLAN	CITY OF SAN DIEGO	37-000392, 37-000414, 37-000415, 37-000531, 37-001087, 37-001106, 37-005028, 37-005031, 37-005032, 37-005034, 37-005035, 37-005161, 37-005198, 37-005201, 37-005202, 37-005219, 37-005220, 37-005221, 37-005378, 37-005385, 37-005387, 37-005826, 37-008098, 37-008099, 37-008100, 37-008101, 37-008102, 37-008103, 37-008104, 37-008105, 37-008106, 37-008107, 37-008108, 37-008109, 37-008110, 37-008111, 37-008112, 37-008113, 37-008115, 37-008116, 37-008117, 37-008118, 37-008119, 37-008120, 37-008121, 37-008123, 37-008124, 37-008125, 37-008396, 37-008970, 37-008971, 37-009241, 37-009869
SD-04819	NADB-R - 1124819; Voided - CARRICO225	1999	CARRICO, RICHARD	HISTORICAL OVERVIEW TO LAND USE AND DEVELOPMENT WITHIN THE CAMP ELLIOTT AREA	MOONEY AND ASSOCIATES	

Report List

Report No.	Other IDs	Year	Author(s)	Title	Affiliation	Resources
SD-04911	NADB-R - 1124911; Voided - LAYLAND35	1985	Laylander, Don	Archaeological Survey Report for Proposed Widening & Ramp Construction Route I-5/ Carmel Valley Road San Diego County	Don Laylander	37-000197, 37-000531, 37-001010, 37-001103, 37-004605, 37-004614, 37-004615, 37-004627, 37-004629, 37-004647, 37-008121
SD-05040	NADB-R - 1125040; Voided - CALTRANS27	1985	Caltrans	Historic Property Survey 11-SD-5 R30.0-R34.1	Dept. of Transportation	
SD-05234	NADB-R - 1125234; Voided - KIRKISH12	1997	KIRKISH, ALEX and Brian F. Smith	An Archaeological Survey of the Eastgate Acres project (LDR No. 96-7756)	Alex Kirkish	
SD-05296	NADB-R - 1125296; Voided - HECTOR103	1985	HECTOR, SUSAN	EXCAVATIONS AT SDI-4609 A PORTION OF THE VILLAGE OF YSTAGUA SORRENTO VALLEY, CALIFORNIA	SUSAN HECTOR	37-004609
SD-05297	NADB-R - 1125297; Voided - CARRICO232	1988	CARRICO, RICHARD	DATA RECOVERY PROGRAM FOR A PORTION OF PUMP STATION 64 FORCE MAIN IMPROVEMENT WITHIN THE SOUTHWESTERN PORTION OF SDI-4609, THE VILLAGE OF YSTAGUA, SORRENTO VALLEY, DRAFT FINAL REPORT	WESTEC SERVICES	37-001010, 37-001064, 37-004513, 37-004609, 37-005443
SD-05298	NADB-R - 1125298; Voided - CARRICO233		CARRICO, RICHARD and CLIFFORD V. F. TAYLOR	PHASE I TEST EXCAVATIONS OF PORTIONS OF SDI-5443 SITUATED ON HALLMARK CIRCUITS, INC. PROPERTY	WESTEC SERVICES	37-005443
SD-05299	NADB-R - 1125299; Voided - WESTEC70	1975	WESTEC	RIMBACH PROPERTY ARCHAEOLOGY REPORT	WESTEC	
SD-05300	NADB-R - 1125300; Voided - CARRICO234	1983	CARRICO, RICHARD and CLIFFORD V. F. TAYLOR	EXCAVATION OF A PORTION OF YSTAGUA: A COASTAL VALLEY IPAI SETTLEMENT	RICHARD CARRICO	37-004609
SD-05320	NADB-R - 1125320; Voided - PIGNIOLO97	2001	PIGNIOLO, ANDREW and STEPHANIE MURRAY	Letter Report: Los Penasquitos Canyon Revegetation Monitoring Report	Tierra Environmental Services	
SD-05569	NADB-R - 1125569; Other - GTI 130; Voided - DUKE 148	2002	DUKE, CURT	AT&T WIRELESS SERVICES FACILITY NO. 10005 A-01	LSA ASSOC., INC.	37-010687
SD-05701	NADB-R - 1125701; Voided - WINTERROW3	1995	WINTERROWD, CATHY	Proposed Mitigated Negative Declaration: Sunset Creek Condominiums	Winterrowd, Cathy	
SD-05865	NADB-R - 1125865; Voided - BULL 67	1978	BULL, CHARLES S.	LETTER REPORT: ARCHAEOLOGICAL RESOURCES ON A PARCEL ON ROSELLE STREET, SORRENTO VALLEY	CHAS. BULL	37-004609

Report List

Report No.	Other IDs	Year	Author(s)	Title	Affiliation	Resources
SD-06040	NADB-R - 1126040; Voided - WADE80	2001	Wade, Sue	3880 Quarter Mile Drive: Archaeological Information	Heritage Resources	
SD-06198	NADB-R - 1126198; Voided - LAYLAND 44	1986	LAYLANDER, DON	FIRST SUPPLEMENTAL HISTORIC PROPERTY SURVEY 11-SD-5 P.M.R30.0-R34.5 11222-030100	CALIFORNIA DEPARTMENT OF TRANSPORTATION	
SD-06405	NADB-R - 1126405; Voided - CITYSD 433	1995	CITY OF SAN DIEGO	DEIR FOR CORPORATE RESEARCH PARK	CITY OF SAN DIEGO	
SD-06646	NADB-R - 1126646; Voided - HECTOR 109	1982	HECTOR, SUSAN	ARCHAEOLOGICAL SURVEY OF PARCEL 340-081-8 SORRENTO VALLEY, SAN DIEGO	SUSAN HECTOR	
SD-07312	NADB-R - 1127312; Voided - LAYLAND 46	1988	LAYLANDER, DON	RESULTS OF A DATA RECOVERY PROGRAM FOR CORRAL CANYON PREHISTOIRC ARCHAEOLOGICAL DISTRICT, SAN DIEGO COUNTY, CALIFORNIA	DON LAYLANDER	37-009445, 37-009446, 37-009447, 37-009451, 37-009452, 37-009453, 37-009454, 37-009741, 37-009742, 37-009743, 37-009744, 37-009745, 37-009746, 37-009747, 37-009748, 37-009749, 37-009750, 37-009751, 37-009755, 37-009756, 37-009757, 37-009768, 37-009771, 37-010885, 37-010890
SD-07378	NADB-R - 1127378; Voided - SMITH 392	1998	SMITH, BRIAN F.	AN ARCHAEOLOGICAL SURVEY OF THE VISTA SORRENTO PARKWAY PROJECT	BRIAN F. SMITH & ASSOC.	
SD-07419	NADB-R - 1127419; Voided - CITYSD 802	2002	CITY OF SAN DIEGO	PUBLIC NOTICE OF A PROPOSED MITIGATED NEGATIVE DECLARATION OLSEN INDUSTRIAL LOT	CITY OF SAN DIEGO	
SD-07420	NADB-R - 1127420; Voided - SMITH 402	2000	SMITH, BRIAN F.	AN ARCHAEOLOGICAL SURVEY FO THE OLSEN INDUSTRIAL LOT PROJECT, 9905 OLSEN DRIVE, SAN DIEGO, CALIFORNIA	BRIAN F. SMITH & ASSOC.	37-010249
SD-07469	NADB-R - 1127469; Voided - DUKE 98	2002	DUKE, CURT	CULTURAL RESOURCE ASSESSMENT AT&T WIRELESS SERVICES FACILITY NO. 10090A SAN DIEGO COUNTY, CALIFORNIA	LSA ASSOC.	
SD-07584	NADB-R - 1127584; Voided - HARPER 01	2000	HARPER, CHRISTOPHER and ROMAN BECK	PHASE I CULTURAL RESOURCES SURVEY AND ASSESSMENT: MIRA SORRENTO PLACE (CONNECTOR ROAD) BETWEEN SCRANTON ROAD AND VISTA SORRENTO PARKWAY SAN DIEGO, CALIFORNIA	URS CORP.	
SD-07656	NADB-R - 1127656; Voided - OLMO 03	1979	KEITH OLMO	ARCHAEOLOGICAL SURVEY AND REPORT: SORRENTO CORPORATE PARK	MSA, INC	

Report List

Report No.	Other IDs	Year	Author(s)	Title	Affiliation	Resources
SD-07681	NADB-R - 1127681; Voided - SMITH 425	2000	BRIAN F. SMITH	ADDENDUM TO AN ARCHAEOLOGICAL SURVEY OF THE TOWNE CENTRE CORPORATE PLAZA; OFF-SITE SEWER PROJECT	BRIAN F. SMITH AND ASSOCIATES	
SD-07702	NADB-R - 1127702; Voided - SMITH 416	2000	BRIAN F. SMITH	AN ARCHAEOLOGICAL SURVEY OF THE OLSON INDUSTRIAL LOT PROJECT	BRIAN F. SMITH AND ASSOCIATES	37-010249
SD-07733	NADB-R - 1127733; Voided - WESTEC 33	1982	WESTEC	SORRENTO HILLS COMMUNITY PLAN DRAFT EIR	WESTEC	37-000962, 37-001076
SD-07855	NADB-R - 1127855; Other - PBM 031; Voided - DUKE 179	2001	DUKE, CURT	CULTURAL RESOURCE ASSESSMENT CINGULAR WIRELESS FACILITY NO. SD 653-01 SAN DIEGO, CA	LSA ASSOC.	
SD-08149	NADB-R - 1128149; Voided - DUKE231	2003	DUKE, CURT	CULTURAL RESOURCE ASSESSMENT CINGULAR WIRELESS FACILITY NO. SD 962-01 CITY AND COUNTY OF SAN DIEGO, CALIFORNIA	CSA ASSOCIATES, INC.	
SD-08267	NADB-R - 1128267; Voided - CITYSD 985	2002	CITY OF SAN DIEGO	PUBLIC NOTICE OF A PROPOSED MITIGATED NEGATIVE DECLARATION FOR OLSON INDUSTRIAL LOT	DEVLEOPMENT SERVICES DEPARTMENT	
SD-08353	NADB-R - 1128353; Voided - CITYSD1013	2003	CITY OF SAN DIEGO	PUBLIC NOTICE OF A PROPOSED MITIGATED NEGATIVE DECLARATION FOR EL CUERVO NORTE OFFSITE MITIGATION & ACCESS ROAD	CITY OF SAN DIEGO	
SD-08405	NADB-R - 1128405; Voided - SHEPARD05	2000	Shepard, Richard S.	Cultural Resources Records Search and Survey Report for the Sunset Pointe Property, Los Penasquitos Area, San Diego County, California	Chambers Group Inc.	
SD-08535	NADB-R - 1128535; Voided - FINK121	1983	FINK, GARY	THE CULTURAL RESOURCES OF LOS PENASQUITOS REGIONAL PARK, SAN DIEGO, CALIFORNIA	COUNTY OF SAN DIEGO DEPT. OF PUBLIC WORKS	37-001087, 37-005032, 37-005034, 37-005201, 37-005202, 37-008098, 37-008099, 37-008100, 37-008101, 37-008102, 37-008103, 37-008104, 37-008105, 37-008106, 37-008107, 37-008108, 37-008109, 37-008110, 37-008111, 37-008112, 37-008113, 37-008114, 37-008115, 37-008116, 37-008117, 37-008118, 37-008119, 37-008120, 37-008121, 37-008122, 37-008123, 37-008124, 37-008125

Report List

Report No.	Other IDs	Year	Author(s)	Title	Affiliation	Resources
SD-08852	NADB-R - 1128852; Other - CONTRACT NO. RR-272024; Voided - WADE129	1990	WADE, SUE A., STEPHEN R. VAN WORMER, and DAYLE M. CHEEVER	HISTORIC PROPERTIES INVENTORY FOR NORTH CITY WATER RECLAMATION FACILITIES CLEAN WATER PROGRAM FOR GREATER SAN DIEGO, SAN DIEGO, CALIFORNIA	RECON	37-000045, 37-000046, 37-002723, 37-004513, 37-004609, 37-005017, 37-005204, 37-005443, 37-008803, 37-010437, 37-010438, 37-010531, 37-011750, 37-011751, 37-011752, 37-011753, 37-011754, 37-011783, 37-011784, 37-011785
SD-08957	NADB-R - 1128957; Voided - MOONEY43	1993	BRIAN F. MOONEY ASSOCIATES	DRAFT: HISTORIC PROPERTIES BACKGROUND STUDY FOR THE CITY OF SAN DIEGO CLEAN WATER PROGRAM	BRIAN F. MOONEY ASSOCIATES	
SD-09099	NADB-R - 1129099; Voided - KYLE263	2001	KYLE, CAROLYN	CULTURAL RESOURCE SURVEY FOR THE BIOSTRUCT RESEARCH AND DEVELOPMENT PROJECT; CITY OF SAN DIEGO, CALIFORNIA	KYLE CONSTRUCTING	
SD-09156	NADB-R - 1129156; Voided - MCGINNIS28	2004	MCGINNIS, PATRICK and MICHAEL BAKSH	CULTURAL RESOURCES SURVEY OF THE POS PENASQUITOS WATERSHED SEDIMENTATION BASIN PROJECT, CITY OF SAN DIEGO, CALIFORNIA	TIERRA ENVIRONMENTAL SERVICES	
SD-09342	NADB-R - 1129342; Other - 58- 00161049.01; Voided - HARPER02	2002	HARPER, CHRISTOPHER and ROMAN F. BECK	PHASE I CULTURAL RESOURCES SURVEY AND ASSESSMENT: SORRENTO- MIRIMAR CURVE REALIGNMENT AND SECOND MAIN TRACK PROJECT PROJECT SAN DIEGO COUNTY, CALIFORNIA	URS CORPORATION	37-005204, 37-005606, 37-010438
SD-09516	NADB-R - 1129516; Voided - CATERINO01	2005	Caterino, David	The Cemeteries and Gravestones of San Diego County: An Archaeological Study	David Caterino	
SD-09634	NADB-R - 1129634; Voided - KYLE 289	2001	Kyle, Carolyn	Cultural Resource Assessment/Evaluation for Cingular Wireless Site SD392-04, San Diego, California	Kyle Consulting	
SD-09649	NADB-R - 1129649; Voided - KYLE 304	2001	Kyle, Carolyn	Cultural Resource Assessment/Evaluation for Cingular Wireless Site SD519-01, San Diego, California	Kyle Consulting	
SD-09898	NADB-R - 1129898; Voided - PIGNIOL183	2005	Andrew Pignoli	Archaeological Testing and Evaluation at CA- SDI-2723 (SDM-W-265) for the Proposed Carroll Canyon Road Extension Project, City of San Diego, California (EA11-955976 L, Project Number 16138)	Tierra Environmental Services	37-002723
SD-10139	NADB-R - 1130139; Other - 0303-462; Voided - CASER 72	2006	Case, Robert and K. Ross Way	Cultural resources monitoring report for the Olson Industrial Park Project (LDR No. 40- 0495), University Area, San Diego, California	Mooney Jones and Stokes	

Report List

Report No.	Other IDs	Year	Author(s)	Title	Affiliation	Resources
SD-10885	NADB-R - 1130885; Voided - MATTING01	2007	MATTINGLY, SCOTT A.	ARCHAEOLOGICAL AND GEOSPATIAL INVESTIGATIONS OF FIRE-ALTERED ROCK FEATURES AT TORREY PINES STATE RESERVE, SAN DIEGO, CALIFORNIA	SCOTT A. MATTINGLY	37-009595
SD-10923	NADB-R - 1130923; Voided - HISTORI154		TANNER, DON and MARTY STOTT	A STUDY OF THE SANTA MARIA DE LOS PENASQUITOS RANCHO		
SD-11287	NADB-R - 1131287; Voided - HISTORI262		VARIOUS	SORRENTO VALLEY SITE, 10415 SORRENTO VALLEY ROAD, SAN DIEGO, CALIFORNIA		
SD-11640	NADB-R - 1131640; Voided - HARRISN17	2006	HARRIS, NINA	RESULTS OF A CULTURAL RESOURCES RECORDS SEARCH AND SURVEY FOR THE NANCY RIDGE BUSINESS PARK PROJECT, CITY OF SAN DIEGO, CALIFORNIA	HARRIS ARCHAEOLOGICAL CONSULTANTS	
SD-11761	NADB-R - 1131761; Voided - DOMINICI67	2007	DOMINICI, DEB	HISTORIC PROPERTY SURVEY REPORT, I-5 NORTH COAST WIDENING PROJECT	CALTRANS	
SD-11803	NADB-R - 1131803; Voided - DOMINICI68	2008	DOMINICI, DEB	HISTORIC PROPERTY SURVEY REPORT FOR INTERSTATE 805 NORTH CORRIDOR PROJECT	CALTRANS	
SD-11824	NADB-R - 1131824; Voided - FERRISR07	1980	FERRIS, ROBERT D.	RUIZ-ALVARADO ADOBE RANCH HOUSE - A FEASIBILITY STUDY FOR THE PRESERVATION, RESTORATION, AND/OR RECONSTRUCTION	ROBERT D. FERRIS	
SD-11825	NADB-R - 1131825; Voided - ROSENMI124	2008	ROSEN, MARTIN D.	HISTORIC PROPERTY SURVEY REPORT FOR THE I-805 DIRECT ACCESS RAMP AND CARROLL CANYON ROAD EXTENSION PROJECT, CITY OF SAN DIEGO, CALIFORNIA	CALTRANS	
SD-11826	NADB-R - 1131826; Other - AFFINIS JOB NO. 2215; Voided - ROBBINS255	2008	ROBBINS-WADE, MARY	ARCHAEOLOGICAL RESOURCES ANALYSIS FOR THE MASTER STORMWATER SYSTEM MAINTENANCE PROGRAM, SAN DIEGO, CALIFORNIA PROJECT. NO. 42891	AFFINIS	
SD-11832	NADB-R - 1131832; Voided - ROBBINS257	2008	ROBBINS-WADE, MARY	LOPEZ CANYON LONG-TERM ACCESS PROJECT CULTURAL RESOURCES SURVEY	AFFINIS	

Report List

Report No.	Other IDs	Year	Author(s)	Title	Affiliation	Resources
SD-12165	NADB-R - 1132165; Voided - ROSENM130	2009	ROSEN, MARTIN	FIRST SUPPLEMENTAL ARCHAEOLOGICAL SURVEY REPORT FOR THE ZAMUDIO BIOLOGICAL MITIGATION PARCEL FOR THE INTERSTATE 805 DIRECT ACCESS RAMP AND CARROLL CANYON ROAD EXTENSION PROJECT CITY OF SAN DIEGO, CALIFORNIA	CALIFORNIA DEPARTMENT OF TRANSPORTATION	
SD-12200	NADB-R - 1132200; Other - Project No. 42891 SCH No. 200101032; Voided - CITYSD1081	2009		DRAFT ENVIRONMENTAL IMPACT REPORT FOR THE MASTER STORM WATER SYSTEM MAINTENANCE PROGRAM (MSWSMP)	CITY OF SAN DIEGO DEVELOPMENT SERVICES DEPARTMENT	
SD-12297	NADB-R - 1132297; Voided - GROSS103	2009	GROSS, G. TIMOTHY	ARCHAEOLOGICAL RESOURCES ON A LOT ON ROSELLE STREET, SAN DIEGO, CALIFORNIA	AFFINIS	37-004609
SD-12422	NADB-R - 1132422; Voided - NIGHAS68	2001	NI GHABHLAIN, SINEAD and DREW PALLETTE	A CULTURAL RESOURCES INVENTORY FOR THE ROUTE REALIGNMENT OF THE PROPOSED PF. NET / AT&T FIBER OPTICS CONDUIT OCEANSIDE TO SAN DIEGO, CALIFORNIA	ASM AFFILIATES, INC.	
SD-12490	NADB-R - 1132490; Voided - WILLISC14	2009	WILLIS, CHAD and JILL GARDNER	FINAL REPORT OF ARCHAEOLOGICAL AND PALEONTOLOGICAL MONITORING FOR THE SDG&E MIRA SORRENTO SUBSTATION PROJECT, SAN DIEGO COUNTY, CALIFORNIA (ETS 7768)	ASM AFFILIATES	
SD-12642	NADB-R - 1132642; Voided - LAYLAD73	2008	LAYLANDER, DON and LINDA AKYUZ	ARCHAEOLOGICAL SURVEY AND EXTENDED PHASE I INVESTIGATIONS FOR THE CALTRANS I-805 NORTH CORRIDOR PROJECT, SAN DIEGO COUNTY, CALIFORNIA	ASM AFFILIATES	37-002723, 37-011762, 37-012418, 37-012424, 37-012425
SD-12822	NADB-R - 1132822; Voided - ROSENM143	2010	ROSEN, MARTIN D.	SECOND SUPPLEMENTAL HISTORIC PROPERTY SURVEY (HPSR-S2) FOR THE INTERSTATE 805 DIRECT ACCESS RAMP (DAR) AND CARROLL CANYON ROAD EXTENSION PROJECT; COMPLETION OF SECTION 106 COMPLIANCE IN ACCORDANCE WITH THE STATEWIDE PROGRAMMATIC AGREEMENT	ROSEN, MARTIN D.	37-002723, 37-004513, 37-010251

Report List

Report No.	Other IDs	Year	Author(s)	Title	Affiliation	Resources
SD-13006	NADB-R - 1133006; Other - SCH. NO. 2004101032 PROJECT NO. 42891; Voided - ROBBINS316	2011		MASTER STORM WATER SYSTEM MAINTENANCE PROGRAM - DRAFT RECIRCULATED PROGRAM ENVIRONMENTAL IMPACT REPORT	CITY OF SAN DIEGO	
SD-13283	NADB-R - 1133283; Voided - RUSTONR01	2011	RUSTON, RACHEL S.	CULTURAL RESOURCES REVIEW AND RECORDS SEARCHES FOR LINE 3010 OPERATIONS & MAINTENANCE POTHOLING AND PHASE I & 2 PIPELINE INTEGRITY/ RETROFIT ACTIVITIES	ASM AFFILIATES	37-000608, 37-000611, 37-000689, 37-005369, 37-014133
SD-13474	NADB-R - 1133474; Voided - NIGHAS71	2010	NI GHABHLAIN, SINEAD, MARK BECKER, DAVE IVERSON, SHERRI ANDREWS, and SCOTT WOLF	CULTURAL AND HISTORICAL INVENTORY AND IMPACTS ASSESSMENT REPORT FOR SAN DIEGO ASSOCIATION OF GOVERNMENTS SORRENTO-TO- MIRAMAR DOUBLE TRACK PROJECT, SAN DIEGO COUNTY, CALIFORNIA	ASM AFFILIATES, INC.	37-004513, 37-004609, 37-005443, 37-010438
SD-13475	NADB-R - 1133475; Voided - NIGHAS72	2010	NI GHABHLAIN, SINEAD	HISTORIC PROPERTY TREATMENT PLAN FOR CA-SDI-4609/SDM-W-654, SORRENTO-TO-MIRAMAR DOUBLE TRACK PROJECT, SAN DIEGO COUNTY, CALIFORNIA	ASM AFFILIATES, INC.	37-004513, 37-004609, 37-005443, 37-010438
SD-13490	NADB-R - 1133490; Voided - LEHMAN01	2011	LEHMAN, JANE	SECTION 106 CONSULTATION FOR LEASED CONSTRUCTION FOR NEW FBI BUILDING, 10000 BLOCK OF VISTA SORRENTO PARKWAY, SAN DIEGO CA	REGIONAL HISTORIC PRESERVATION OFFICER	37-001010, 37-001064, 37-001106, 37-002723, 37-004513, 37-004609, 37-005193, 37-005194, 37-005198, 37-005201, 37-005204, 37-005443, 37-005605, 37-005606, 37-005607, 37-005608, 37-005609, 37-005610, 37-005611, 37-005612, 37-005826, 37-007439, 37-007440, 37-008116, 37-008803, 37-008804, 37-008805, 37-008806, 37-008807, 37-008808, 37-010250, 37-010251, 37-010438
SD-14066	NADB-R - 1134066; Voided - GUNDS03	2012	GUNDERMAN, SHELBY, SARAH STRINGER- BOWSER, and SINEAD NI GHABHLAIN	CULTURAL AND HISTORICAL RESOURCES REPORT FOR THE SORRENTO VALLEY DOUBLE TRACK PROJECT	ASM AFFILIATES, INC.	37-000197, 37-001010, 37-004647, 37-017178

Report List

Report No.	Other IDs	Year	Author(s)	Title	Affiliation	Resources
SD-14088	NADB-R - 1134088; Voided - NIGHAS105	2012	NI GHABHLAIN, SINEAD	TASK ORDER 33, AMENDMENT 5: CULTURAL RESOURCE STUDY FOR THE SORRENTO TO MIRAMAR DOUBLE TRACK- PHASE 1 TASK 2- ENVIRONMENTAL CLEARANCE AND PREMITTING, PINES MAINTENANCE SPUR TRACK CULTURAL RESOURCE TESTING	ASM AFFILIATES, INC.	
SD-14089	NADB-R - 1134089; Voided - NIGHAS106	2012	NI GHABHLAIN, SINEAD, SARAH STRINGER BOWSHER, and SCOTT WOLF	CULTURAL RESOURCE EVALUATION REPORT FOR ALTERNATIVES 1C AND 6, SORRENTO TO MIRAMAR CURVES STRAIGHTENING AND DOUBLE TRACK PROJECT, SAN DIEGO COUNTY, CALIFORNIA	ASM AFFILIATES, INC.	37-005203, 37-005204, 37-005605, 37-005606, 37-010249, 37-010251, 37-014807, 37-030526
SD-14090	NADB-R - 1134090; Voided - NIGHAS107	2010	NI GHABHLAIN, SINEAD, MARK BECKER, DAVE IVERSEN, SHERRI ANDREWS, and SCOTT WOLF	CULTURAL AND HISTORICAL INVENTORY AND EVALUATION REPORT FOR SAN DIEGO ASSOCIATION OF GOVERNMENTS SORRENTO-TO-MIRAMAR DOUBLE TRACK PROJECT, SAN DIEGO COUNTY, CALIFORNIA	ASM AFFILIATES, INC.	37-004513, 37-004609, 37-005443, 37-010438
SD-14091	NADB-R - 1134091; Voided - NIGHAS108	2010	NI GHABHLAIN, SINEAD and SCOTT WOLF	CULTURAL AND HISTORICAL RESOURCE EXISTING CONDITIONS REPORT FOR THE SORRENTO TO MIRAMAR CURVE STRAIGHTENING AND DOUBLE TRACK PROJECT, SAN DIEGO COUNTY, CALIFORNIA	ASM AFFILIATES, INC.	37-005203, 37-005204, 37-005605, 37-010249, 37-014807, 37-030526
SD-14262	NADB-R - 1134262; Voided - WILSONS05	2012	WILSON, STACIE	LETTER REPORT: ETS 22202- CULTURAL RESOURCES MONITING REPORT FOR REPLACEMENT ACTIVITIES FOR POLE Z96769, SORRENTO VALLEY AREA OF SAN DIEGO COUNTY, CALFIORNIA- IO 7011102	AECOM	37-008116, 37-035231
SD-14324	NADB-R - 1134324; Voided - WILSONS42	2013	WILSON, STACIE	LETTER REPORT: ETS 24904- CULTURAL RESOURCES SURVEY FOR POLE Z96767, COMMUNITY OF SORRENTO VALLEY, CITY OF SAN DIEGO, CALIFORNIA- IO 7011102	AECOM	37-001106
SD-14615	NADB-R - 1134615; Voided - CALTRANS90	2007	CALTRANS	INTERSTATE 5 CORRIDOR PROJECT HISTORIC PROPERTY SURVEY REPORT AND SUPPLEMENTALS	CALTRANS	
SD-14616	NADB-R - 1134616; Voided - BANTSM01	2013	BANTILAN-SMITH, MERIS	SECTION 106 CONSULTATION FOR SUNSET POINTE RESIDENTIAL DEVELOPMENT	DEPARTMENT OF THE ARMY	

Report List

Report No.	Other IDs	Year	Author(s)	Title	Affiliation	Resources
SD-15218	NADB-R - 1135218	2013	KRISTIN TENNESEN	ETS #24374, CULTURAL RESOURCES MONITORING FOR THE TL 6905, Z96513 EMERGENCY POLE REPLACEMENT PROJECT, SAN DIEGO COUNTY, CALIFORNIA (HDR #201464)	HDR	
SD-16127	NADB-R - 1136127	2008	Deb Dominici and Don Laylander	2007 CULTURAL RESOURCES TREATMENT PLAN NORTH COAST INTERSTATE 5 CORRIDOR	CALTRANS	
SD-16131	NADB-R - 1136131	2013	Michelle Blake	SIXTH SUPPLEMENTAL HISTORIC PROPERTY SURVEY REPORT (HPSR): REVISED AREA OF POTENTIAL EFFECTS (APE) I-5 NORTH COAST CORRIDOR	Caltrans	
SD-16320	NADB-R - 1136320	2015	GLENNY, WAYNE	LETTER REPORT: ETS 30162 - CULTURAL RESOURCES MONITORING FOR THE REPLACEMENT OF CAPACITOR D152461, CITY OF SAN DIEGO, CALIFORNIA - IO 7011102	AECOM	
SD-16330	NADB-R - 1136330	2015	ROY, JULIE	LETTER REPORT: ETS 30453 - CULTURAL RESOURCES SURVEY FOR POLE BRUSHING PROJECT, VARIOUS LOCATIONS, SAN DIEGO COUNTY, CALIFORNIA - IO 6013464	AECOM	
SD-16775	NADB-R - 1136775; Submitter - 20370	2014	GUNDERMAN CASTELLS, SHELBY, BECKER, MARK, SCHARLOTTA, IAN, QUACH, TONY, and GHABHAIN, SINEAD NI	DATA RECOVERY EXCAVATIONS AT CA-SDI-4609/SDM-W-654, ETHNOHISTORIC VILLAGE OF YSTAGUA, FOR THE SAN DIEGO ASSOCIATION OF GOVERNMENTS SORRENTO-TO-MIRAMAR DOUBLE TRACK PHASE ONE PROJECT, SAN DIEGO, CALIFORNIA	ASM Affiliates	37-004609
SD-16960	NADB-R - 1136960	2016	WHITAKER, JAMES E.	ETS #34110 CULTURAL RESOURCES SURVEY FOR THE TL 13810 CMP REPLACE Z96765, Z96766, Z96767, Z96768, PENASQUITOS PROJECT, SAN DIEGO COUNTY, CALIFORNIA	HDR	37-001106, 37-031095, 37-035231
SD-17233	NADB-R - 1137233; Submitter - BCR Project No. SYN1622	2017	BRUNZELL, DAVID	SAN DIEGO 129 PROJECT, SAN DIEGO COUNTY, CALIFORNIA (BCR CONSULTING PROJECT NO. SYN1622)	BCR Consulting LLC	

Report List

Report No.	Other IDs	Year	Author(s)	Title	Affiliation	Resources
SD-17488	NADB-R - 1137488	2018	FOGLIA, ALBERTO B.	ARCHAEOLOGICAL MONITORING FOR TL6905 VEGETATION TRIMMING AT POLE Z102717, SAN DIEGO, SAN DIEGO COUNTY, CALIFORNIA (SDG&E ETS # 37449, PANGIS PROJECT # 1402.13)	PANGIS, INC.	
SD-17509	NADB-R - 1137509	2018	FOGLIA, ALBERTO B.	ARCHAEOLOGICAL MONITORING FOR TL6905 ANCHOR INSTALLATION AT POLE Z96512, SAN DIEGO, SAN DIEGO COUNTY, CALIFORNIA (SDG&E ETS # 37685, PANGIS PROJECT # 1402.14)	PANGIS	
SD-17586	NADB-R - 1137586	2017	PIGNIOLO, ANDREW	CULTURAL RESOURCE SURVEY OF THE FEDEX GROUND PACKAGE SYSTEM PARKING LOT EXPANSION PROJECT 9905 OLSON DRIVE, CITY OF SAN DIEGO, CALIFORNIA	LAGUNA MOUNTAIN ENVIRONMENTAL, INC.	37-010249
SD-18230	NADB-R - 1138230	2019	WILLHITE, BRENTON E.	ETS 43079 & 43081: CULTURAL RESOURCES SURVEY REPORT FOR THE TIER 2, REPLACE ANCHORS, Z90944, Z90945, Z90946, Z90953, SAN DIEGO	PANGIS, INC.	,
SD-18812	NADB-R - 1138812	2018	COX, NARA	LETTER REPORT: ETS 36316 - ARCHAEOLOGICAL TESTING AND MONITORING RESULTS FOR THE INSTALLATION OF NEW STUB POLE P204017, SORRENTO VALLEY, SAN DIEGO COUNTY, CALIFORNIA - IO 7074265	ICF	37-004609
SD-18838	NADB-R - 1138838	2021	JORDAN, AMY	ARCHAEOLOGICAL MONITORING FOR TCM ACCESS ROADS, ANNUAL REPORT 2020, SAN DIEGO COUNTY, CALIFORNIA (ASM #23005.67)	ASM AFFILIATES	, , 37-039240, 37-039241
SD-19182	NADB-R - 1139182	2018	HECTOR, SUSAN and JOSHUA A. TANSEY	ARCHAEOLOGICAL SURVEY FOR THE SDG&E, TCM, TL 6905, VEG TRIM, Z90432, SAN DIEGO, SAN DIEGO COUNTY, CALIFORNIA (SDG&E ETS #37669)	NWB ENVIRONMENTAL SERVICES, LLC	37-007439
SD-19431	NADB-R - 1139431	2021	ZAMUDIO-GURROLA, SUSAN and NICHOLAS HEARTH	CULTURAL RESOURCES IDENTIFICATION AND EVALUATION REPORT FOR THE AGORA PROJECT, 3911-4075 SORRENTO VALLEY BOULEVARD, CITY OF SAN DIEGO, SAN DIEGO COUNTY, CALIFORNIA	MICHAEL BAKER INTERNATIONAL	37-001064

Attachment E

Table of Previously Recorded Cultural
Resources within One Mile of the
Project Area

City of San Diego
ARCHAEOLOGICAL RESOURCE REPORT FORM
Lusk on Lusk Multi-Story Lab/Office Development Project

TABLE OF PREVIOUSLY RECORDED CULTURAL RESOURCES WITHIN ONE MILE OF THE PROJECT APE

Resource Number (P-37-)	Resource Number (CA-SDI-)	Age and Resource(s) Present	Description	Recorder, Date
001064	1064	Unknown	Unknown	C.B., T.G., n.d.; Palette, 2001
001087	1087	Prehistoric Site	Artifact scatter	Medby, 1960; McCoy, 1977
001106	1106	Prehistoric Site	Artifact scatter	Diamond 1960
002723	2723	Prehistoric Site	Temporary campsite	Unknown, n.d.; Ashkar and Hilton, 1999; Pigniolo 2002; Akyüz and Laylander 2008
004513	4513	Prehistoric Site	Artifact scatter	May, 1975; Palette, 2005
004609	4609	Prehistoric Site	Village site of Ystagua	Krase, 1972; Cheever, 1985; Iversen, 2010; Gunderman Castells, 2014; Droessler and McGinnis, 2018
005161	5161H	Historic Site	Two structures and historic debris	McCoy, 1977; Jacques, 1981
005193	5193/H	Multi-Component Site	Adobe ruins and prehistoric artifact scatter	McCoy, 1977; Olmo, 1979; Burkard and Covert, 2007
005194	5194	Prehistoric Site	Artifact scatter	McCoy, 1977
005195	5195	Prehistoric Site	Artifact scatter	McCoy, 1977
005196	5196	Prehistoric Site	Artifact scatter	McCoy, 1977
005198	5198	Prehistoric Site	Artifact scatter	McCoy, 1977; Thesken, 1981
005201	5201H	Historic Site	Adobe structure	McCoy, 1977
005203	5203	Prehistoric Site	Artifact scatter	McCoy, 1977; Gallegos et al., 1995
005204	5204/H	Multi-Component Site	Adobe structure and prehistoric artifact scatter	McCoy, 1977; Hatley, 1978; Wolf et al, 2012
005443	5443	Prehistoric Site	Shell and flake midden	Taylor, 1977
005605	5605	Prehistoric Site	Artifact scatter	Moriarty, 1977; Bull, 1978
005606	5606	Prehistoric Site	Artifact scatter	Moriarty, 1977; Bull, 1978
005607	5607	Prehistoric Site	Artifact scatter	Moriarty, 1977; Bull, 1978; Gallegos et al., 1995
005608	5608	Prehistoric Site	Artifact scatter	Moriarty, 1977; Bull, 1978; Gallegos et al., 1995; Howard, 2017
005609	5609	Prehistoric Site	Artifact Scatter	Moriarty, 1977; Bull, 1978; Gallegos et al., 1995; Howard, 2017
005610	5610	Prehistoric Isolate	Isolated mano	Moriarty, 1977; Bull, 1978
005611	5611	Prehistoric Isolate	Isolated flake tool	Moriarty, 1977; Bull, 1978; Gallegos, 1995
006946	6946H	Historic Site	Remains of animal housing structures	Adams, 1979
006947	6947H	Historic Site	Remains of gate and fencing	Adams, 1979
006952	6952	Prehistoric Site	Ring of stones with no evidence of burning	Adams, 1979
006953	6953	Prehistoric Site	Ring of stones with no evidence of burning	Adams, 1979

City of San Diego
 ARCHAEOLOGICAL RESOURCE REPORT FORM
 Lusk on Lusk Multi-Story Lab/Office Development Project

TABLE OF PREVIOUSLY RECORDED CULTURAL RESOURCES WITHIN ONE MILE OF THE PROJECT APE

Resource Number (P-37-)	Resource Number (CA-SDI-)	Age and Resource(s) Present	Description	Recorder, Date
007439	7439	Prehistoric Site	Artifact scatter	Olmo, 1979; Bosque and Abelon, 2018
007440	7440	Prehistoric Site	Artifact scatter	Olmo, Connel et al., 2007
008116	8116	Prehistoric Site	Artifact scatter	Fink et al., 1979
008120	8120H	Multi-Component Site	Structure remains and historic artifact scatter, shell midden	Norwood, 1979; Fink and Parkins, 1979; Fink et al., 1979
008396	8396	Prehistoric Site	Artifact scatter	Rhodes, 1980
008804	8804	Prehistoric Site	Artifact scatter	Hedges, 1980; Day and Jacques, 1981
010249	10249	Prehistoric Site	Habitation site with artifact scatter	Robbins-Wade, 1985; Way, 2003
010438	10438	Prehistoric Site	Subsumed by P-37-004609	N/A
024739	16385H	Historic Site	The Atchison, Topeka and Santa Fe (AT&SF) Railroad	Ballester and Woodard, 2002; Stiefel and Gunderman, 2009; McLean, 2010; Shultz and Harper, 2011; Ní Ghabhláin, 2012; Castells, 2013; Castells and Quach, 2014; Castells, 2015; Daly, 2015; Tift and Lennen, 2016; Courtney, 2017; Foglia, 2017
025848	17200	Prehistoric Site	Artifact scatter	Hale, 2004
025849	---	Prehistoric Isolate	Isolated flake	Hale, 2004
029948	---	Prehistoric Isolate	Isolated mano and chopping tool	Polan, 1981
031095	19721	Prehistoric Site	Five hearth features with shell fragments	Farmer and Aguilar, 2009
035231	21768	Prehistoric Site	Shell scatter	Bietz, 2013
037746	---	Historic Isolate	Isolated bottle	Shelmire, 2017
038824	---	Prehistoric Isolate	Isolated flake	Willhite and Bilchak, 2019
038825	---	Prehistoric Isolate	Three isolated flakes	Willhite and Bilchak, 2019
039608	---	Historic Site	Remains of a historic orchard	Roy and Linton, 2021

Attachment F

Site Photographs

Site Photographs



APE from eastern edge, view to the west. 5/27/2022.



Existing structure at 6540 Lusk Blvd, view to the northwest. 5/27/2022.



Central portion of APE, showing elevation differences, view to the southeast. 5/27/2022.



Northern edge of the eastern half of the APE, view east. 5/27/2022.